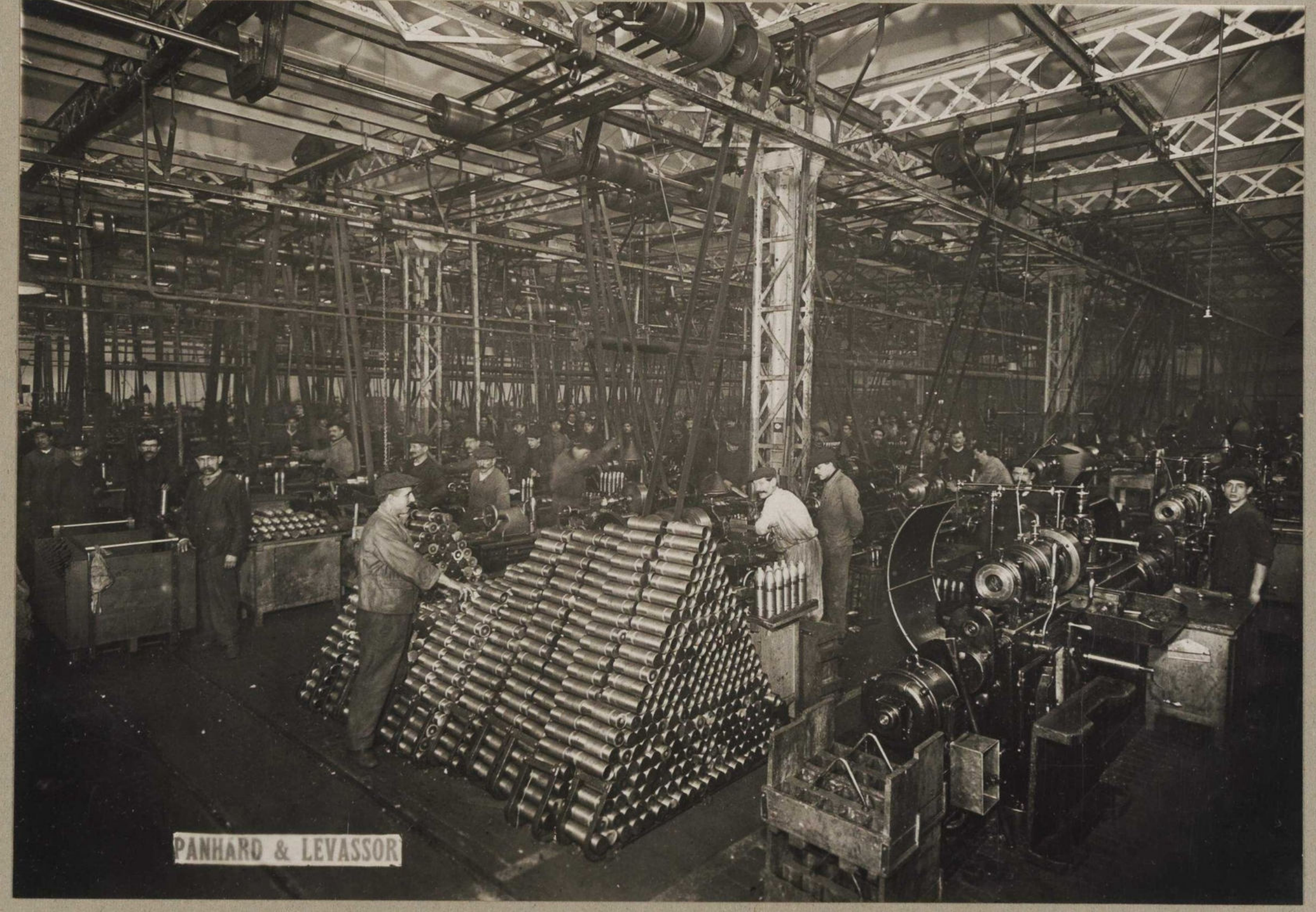




198
67



PANHARD & LEVASSOR



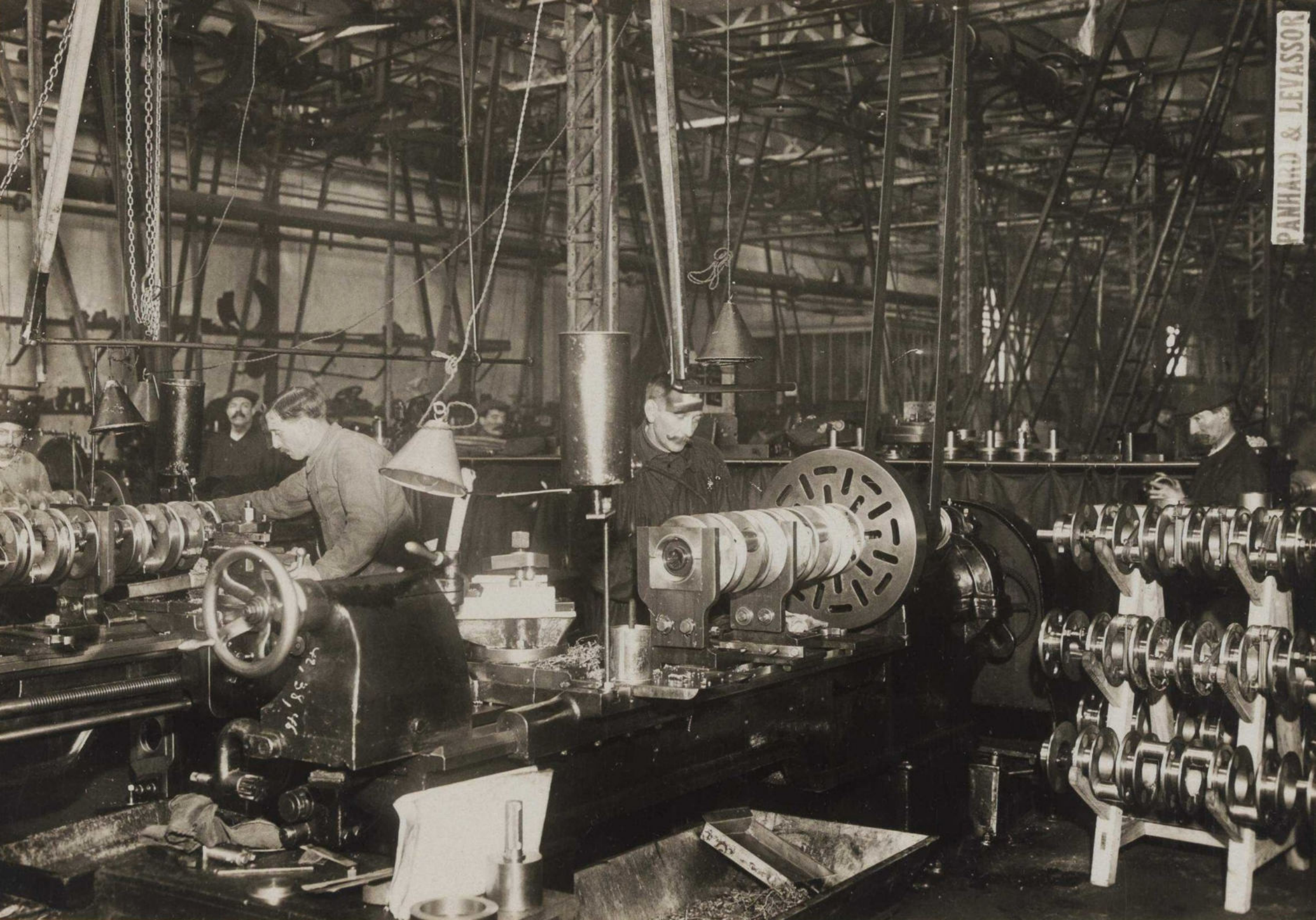
PANHARD & LEVASSOR



PANHARD & LEVASSOR

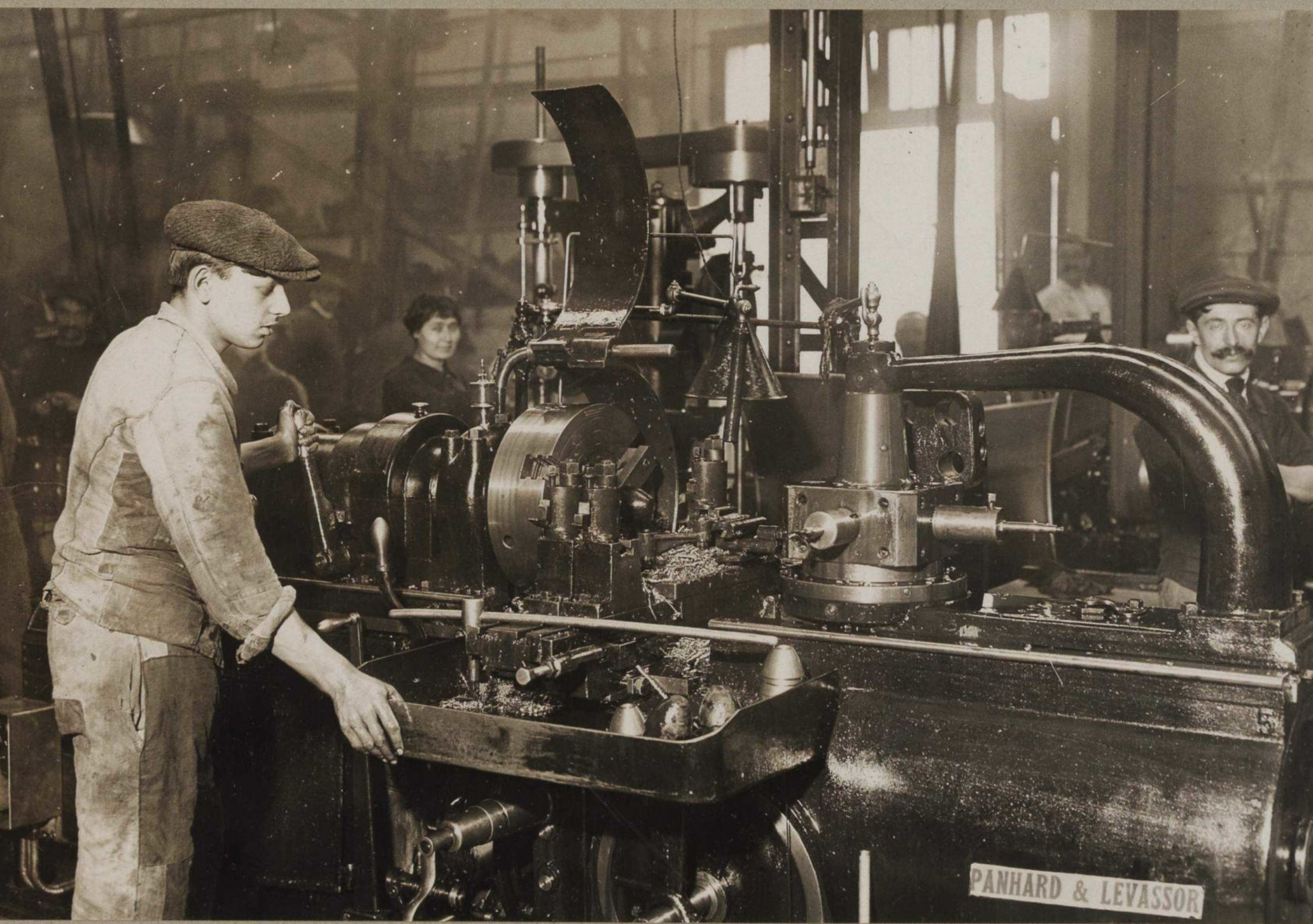


FANHARD & LEVASSOR

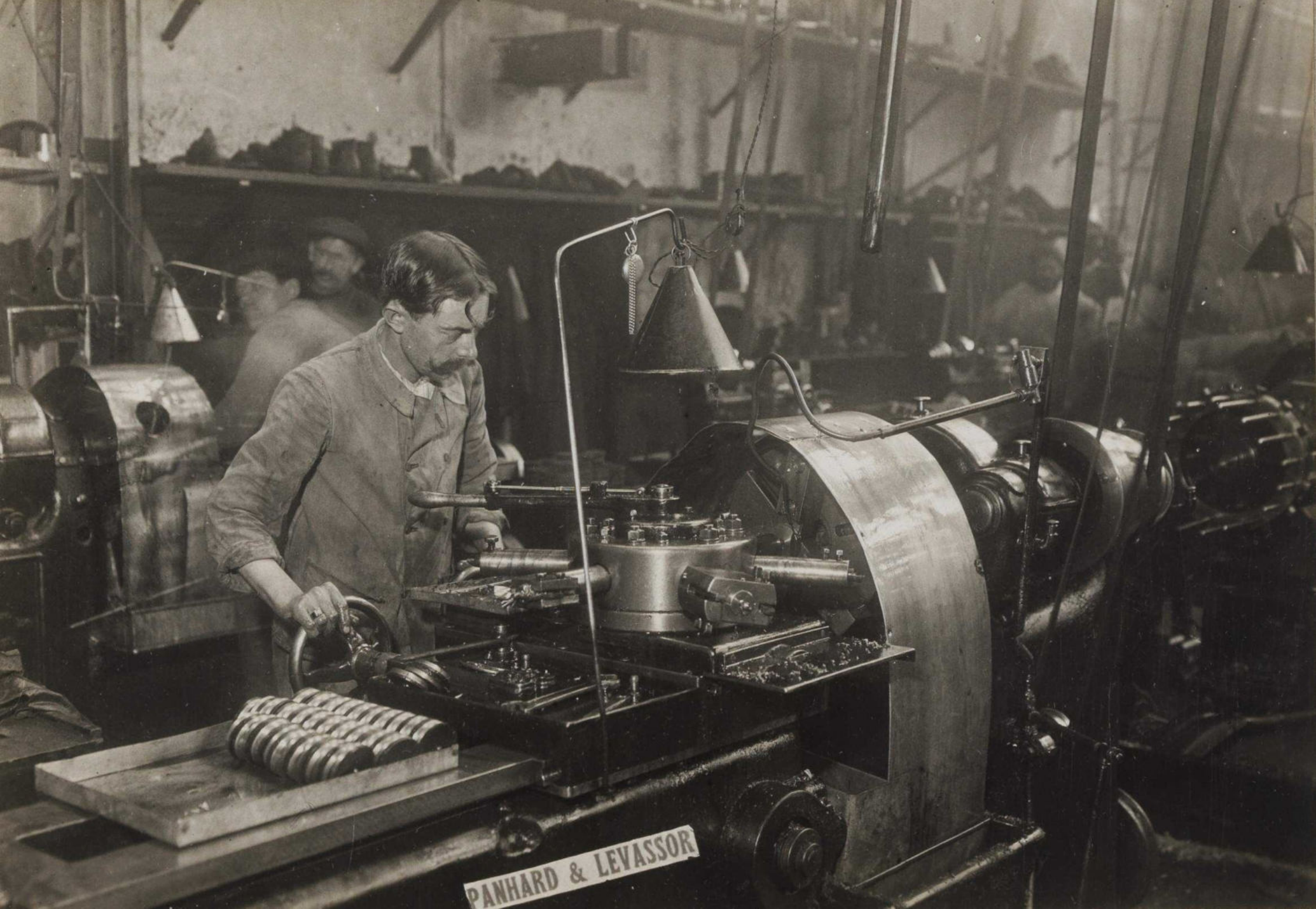


PANHARD & LEVIASSOR

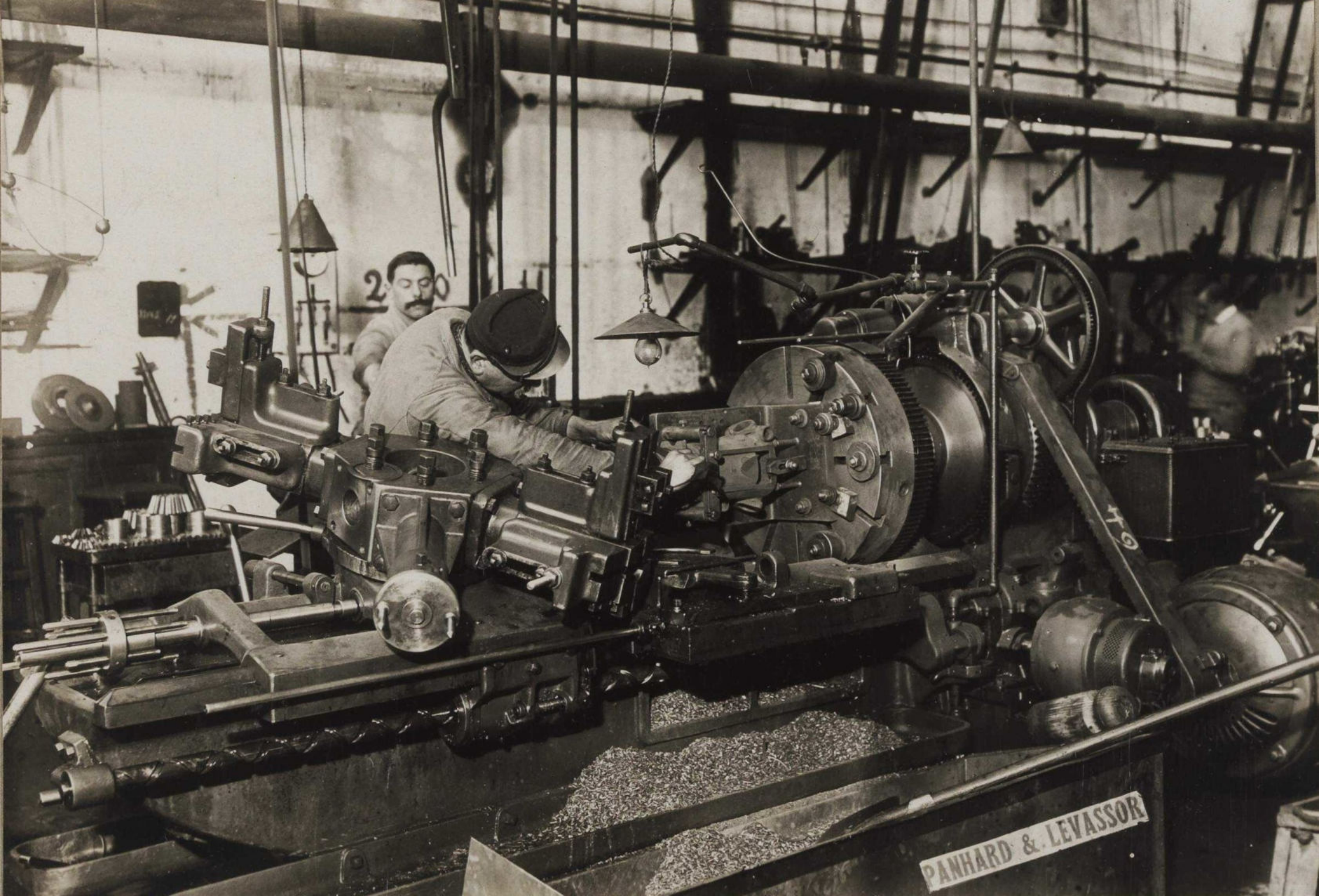
22
185-24



PANHARD & LEVASSOR

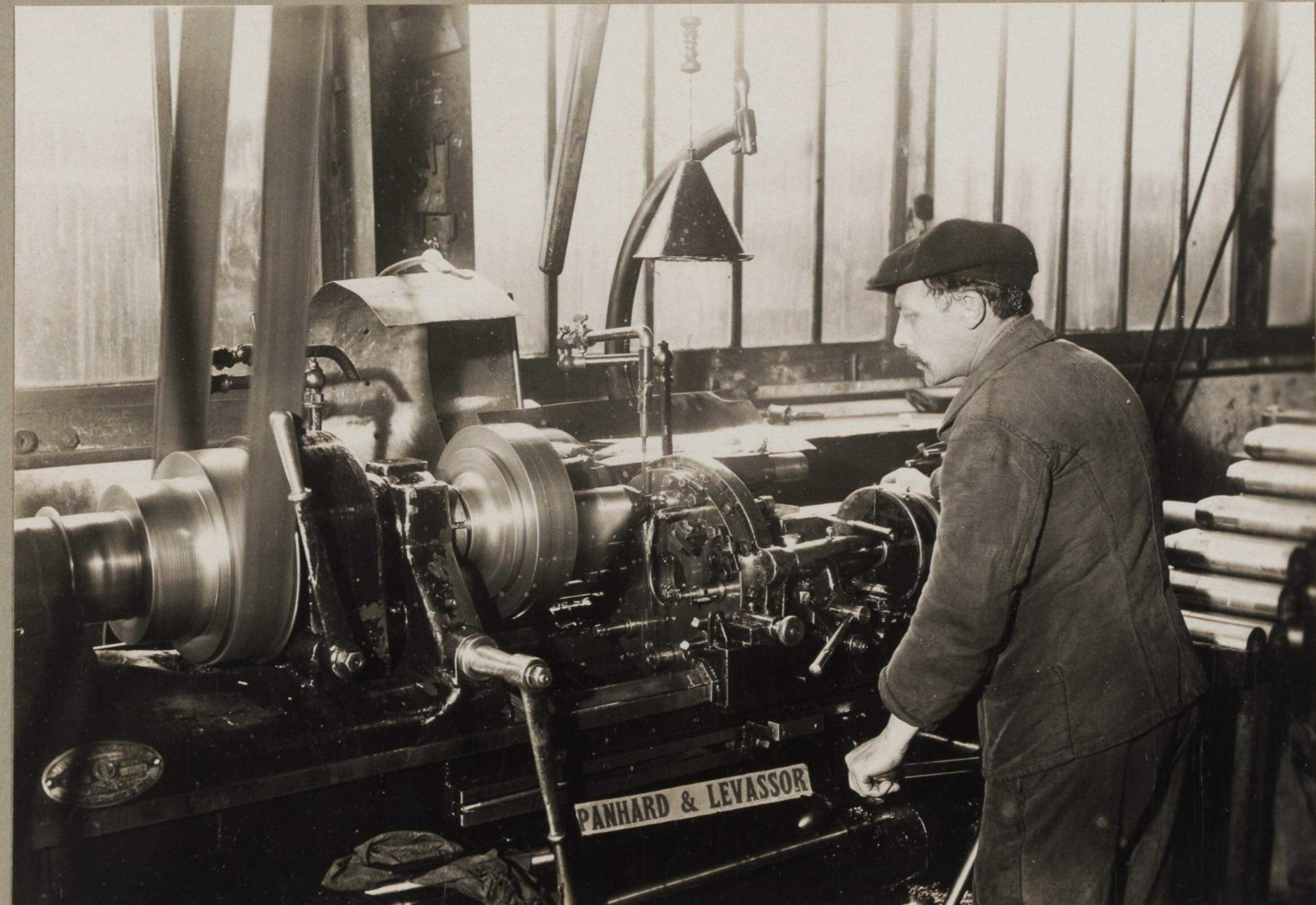


PANHARD & LEVASSOR

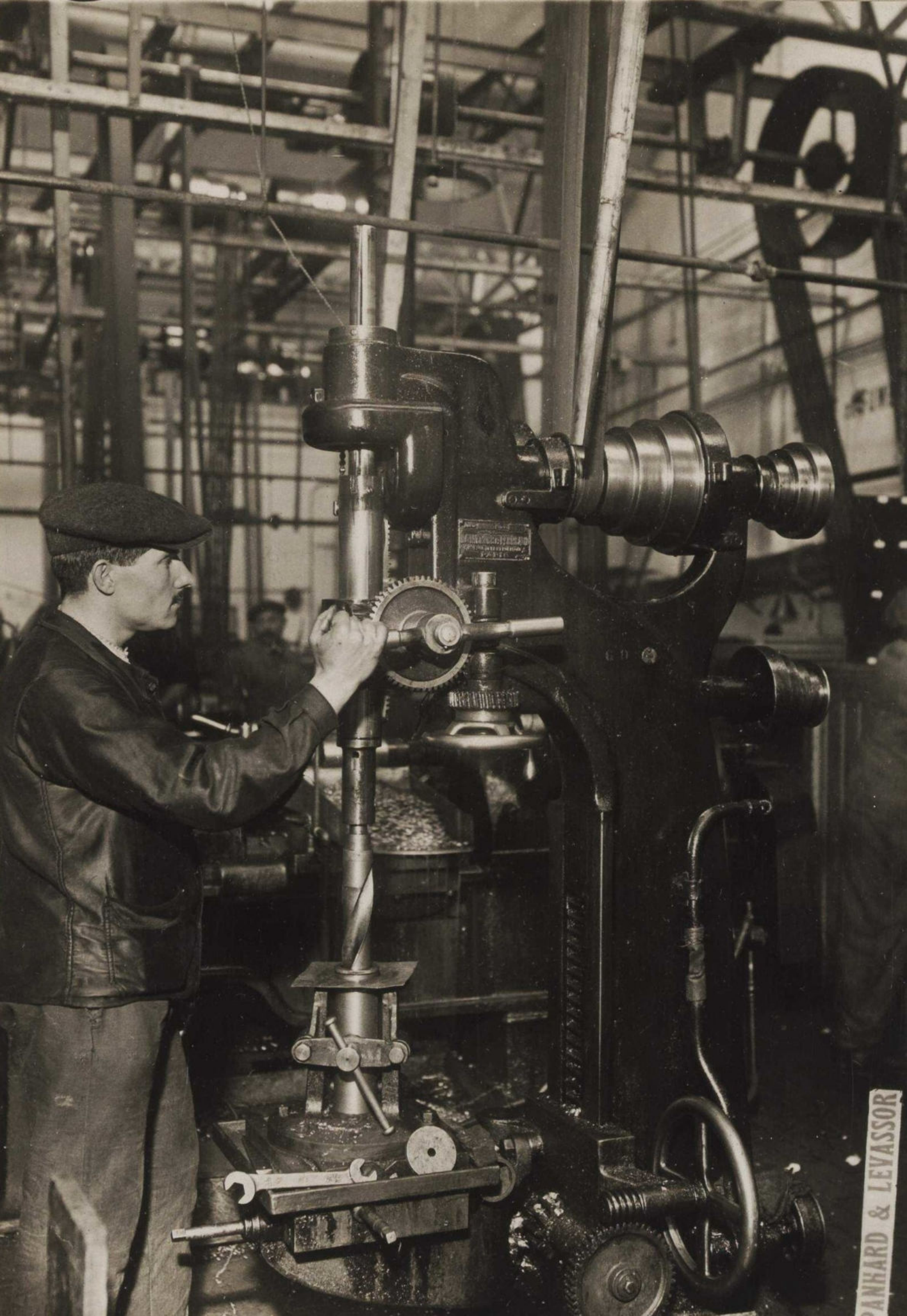


20

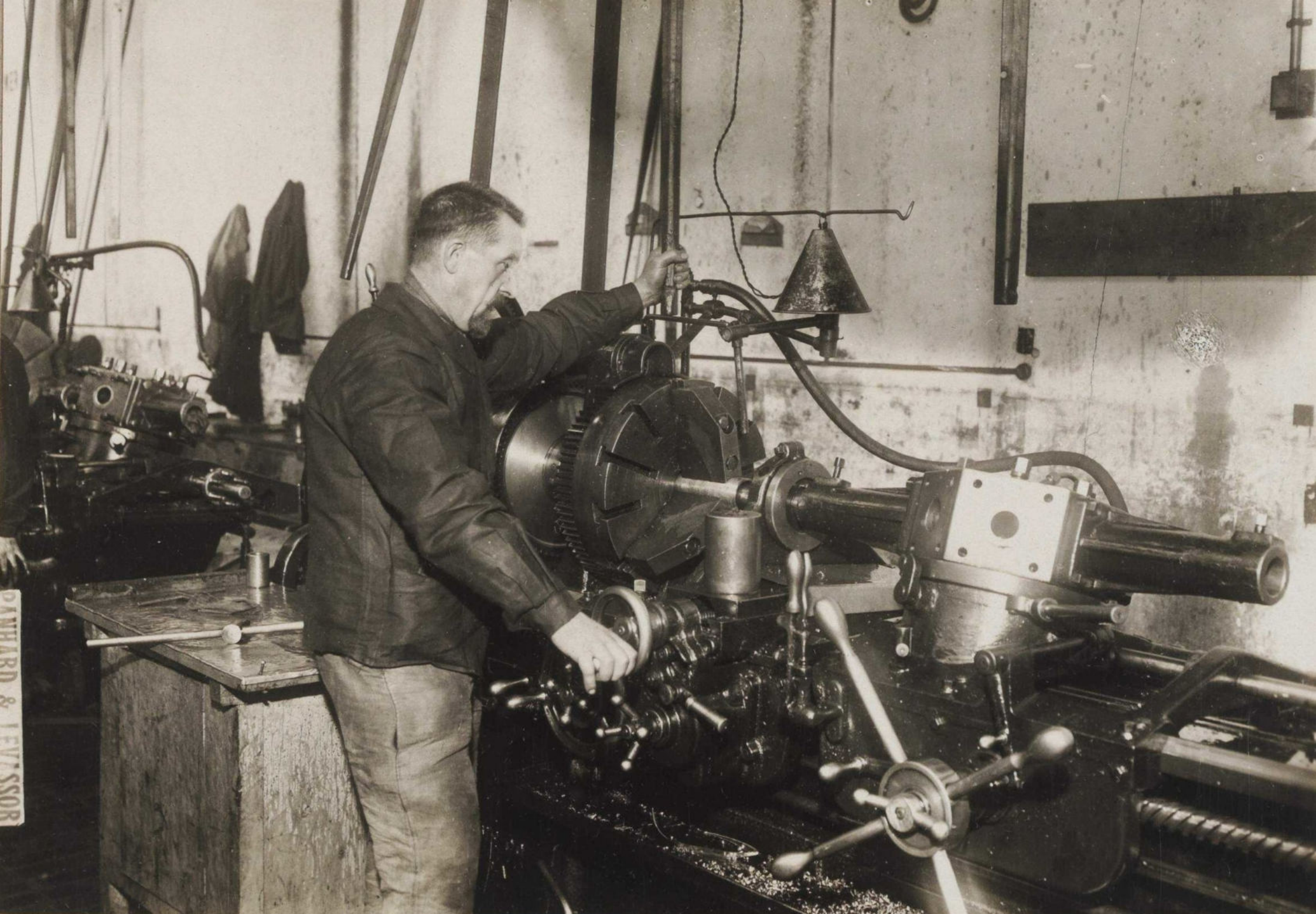
PANHARD & LEVASSOR



PANHARD & LEVASSOR



PANHARD & LEVASSOR



PANHARD & LEVYSSOR



PANHARD & LEVASSOR



SHAW & BASSO



PANHARD & LEVASSOR

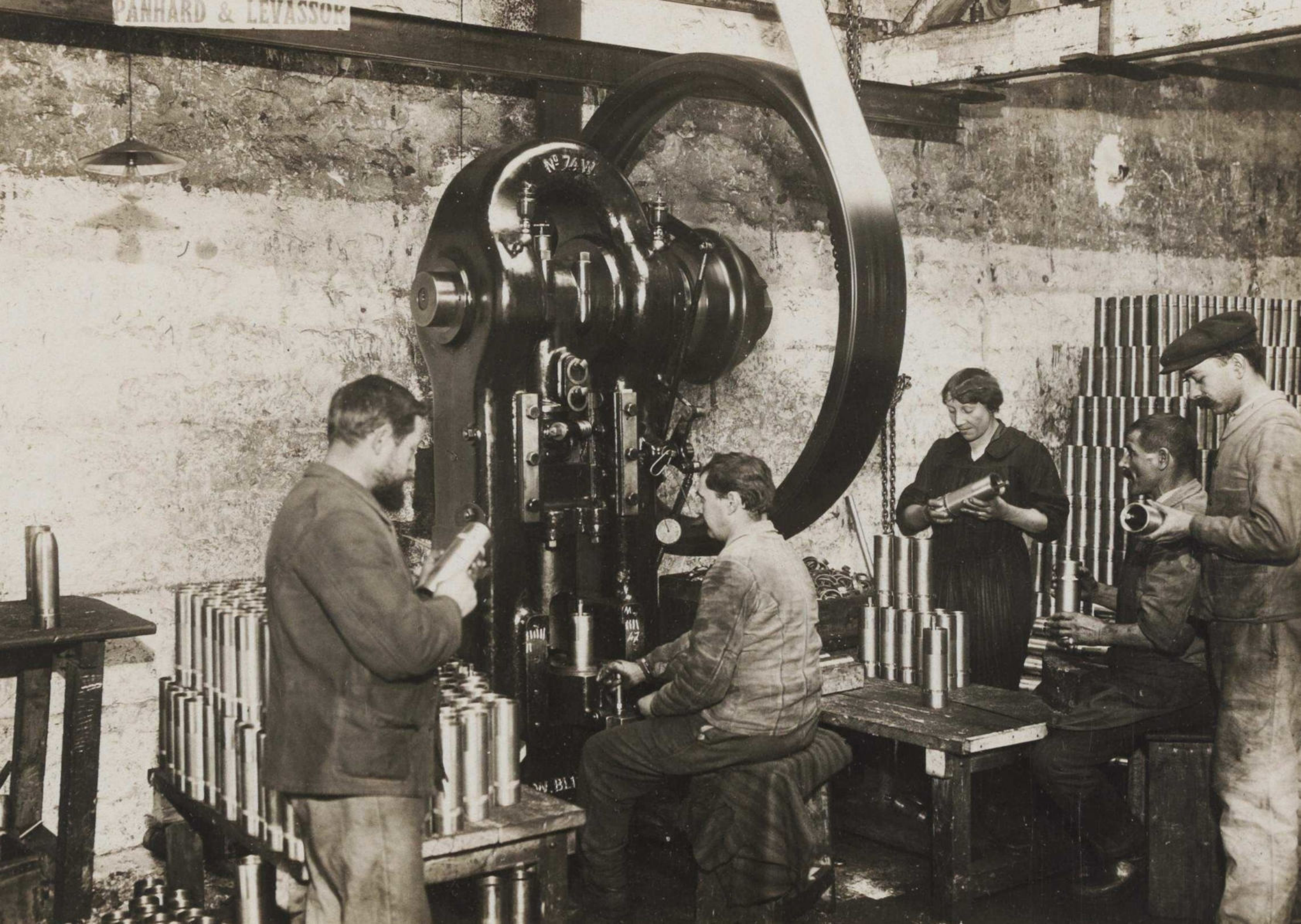


PANHARD & LEVASSOR



PANHARD & LEVASSOR

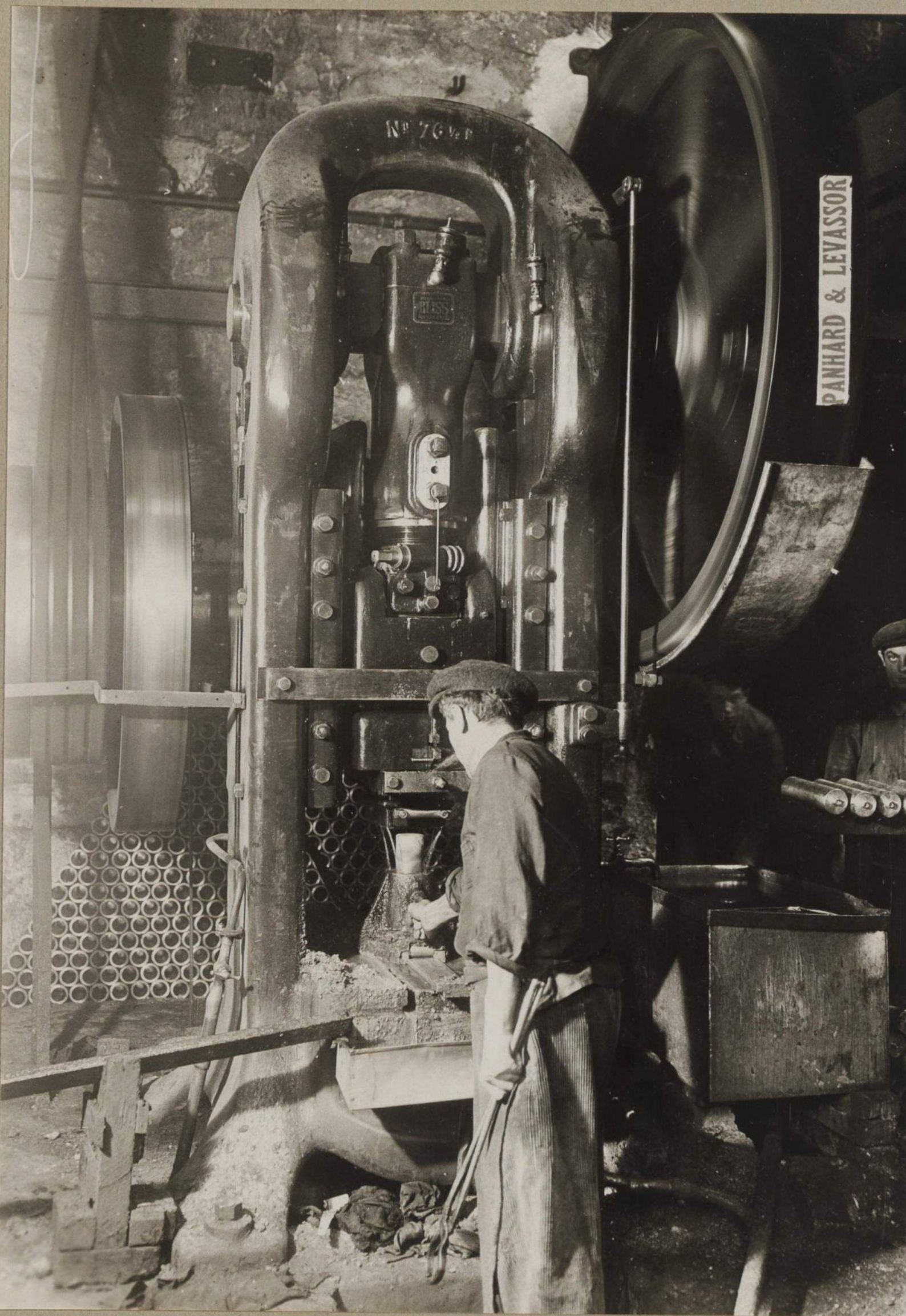
PANHARD & LEVASSOR





V. CHAMPIGNELL - PARIS

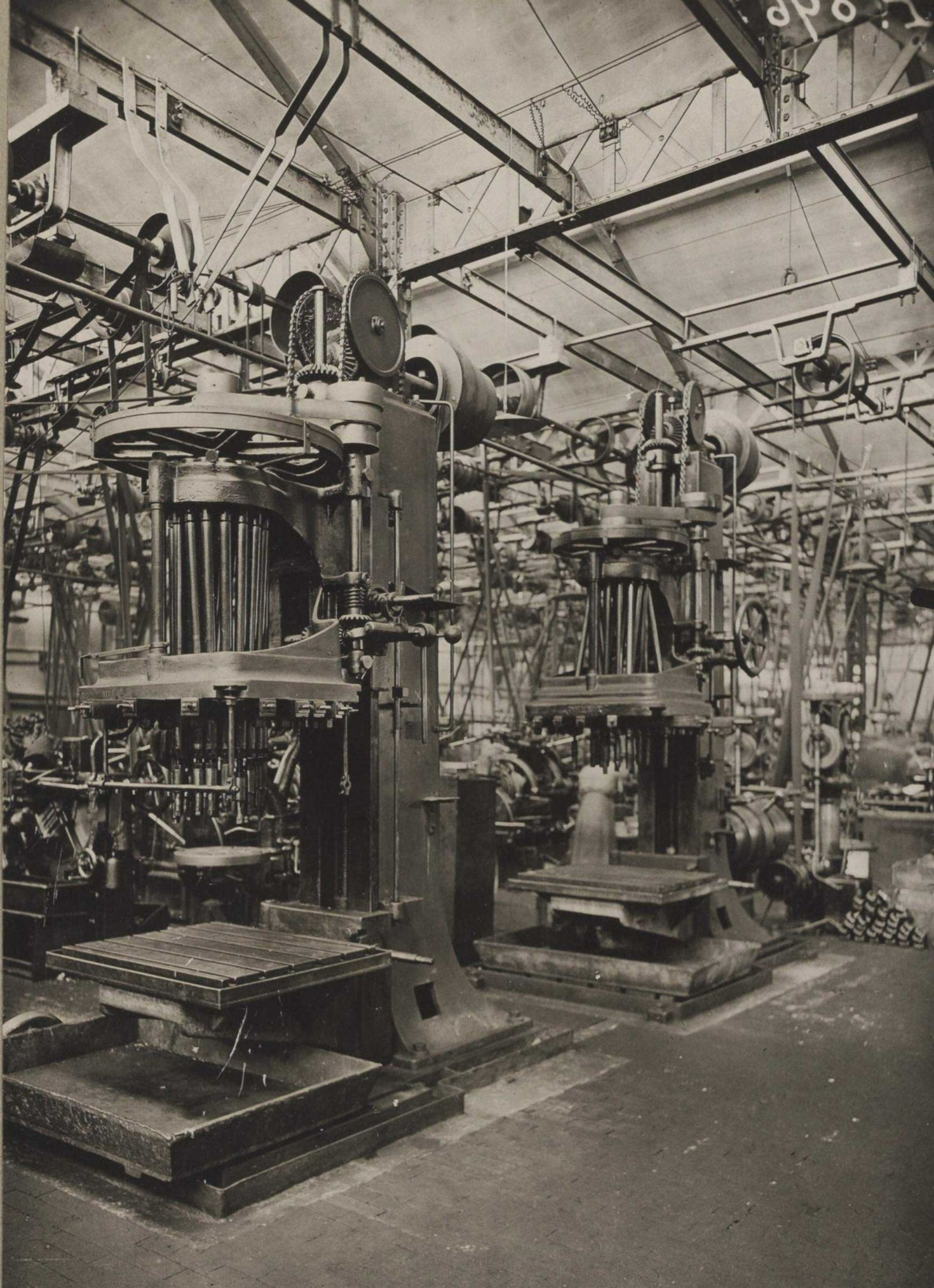
PANHARD & LEVASSOR

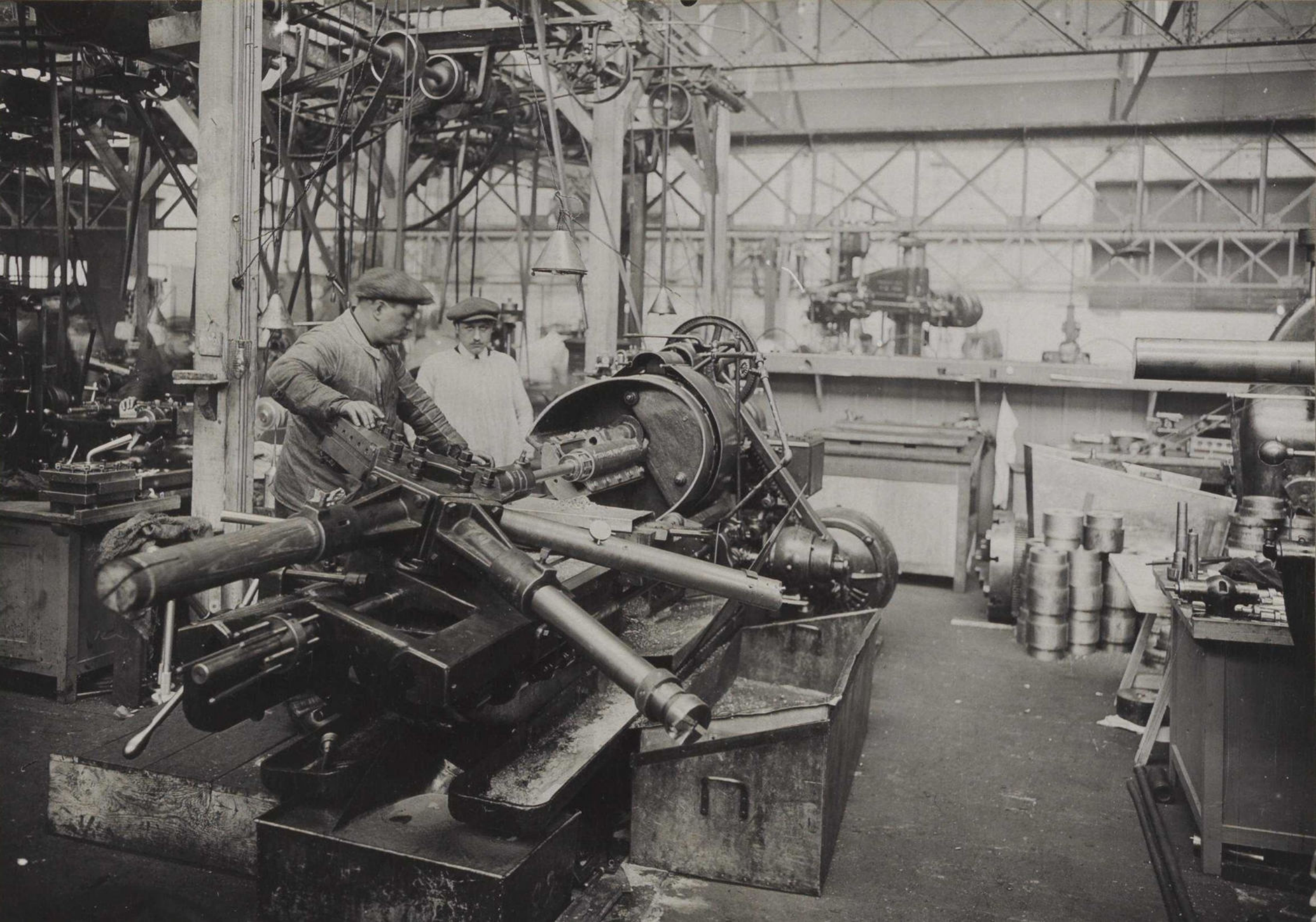


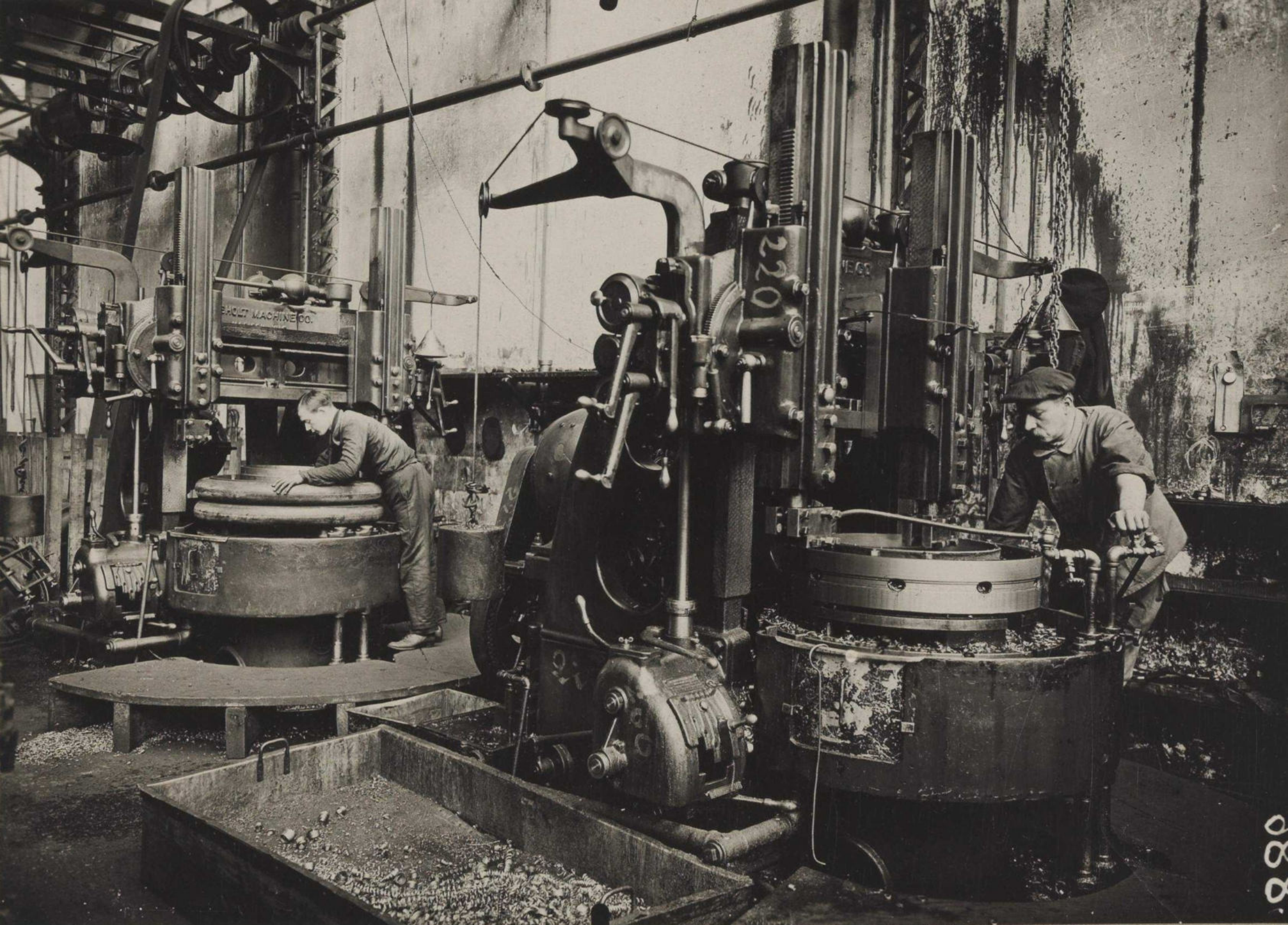
N° 7647

PANHARD & LEVASSOR

P. LEVASSOR



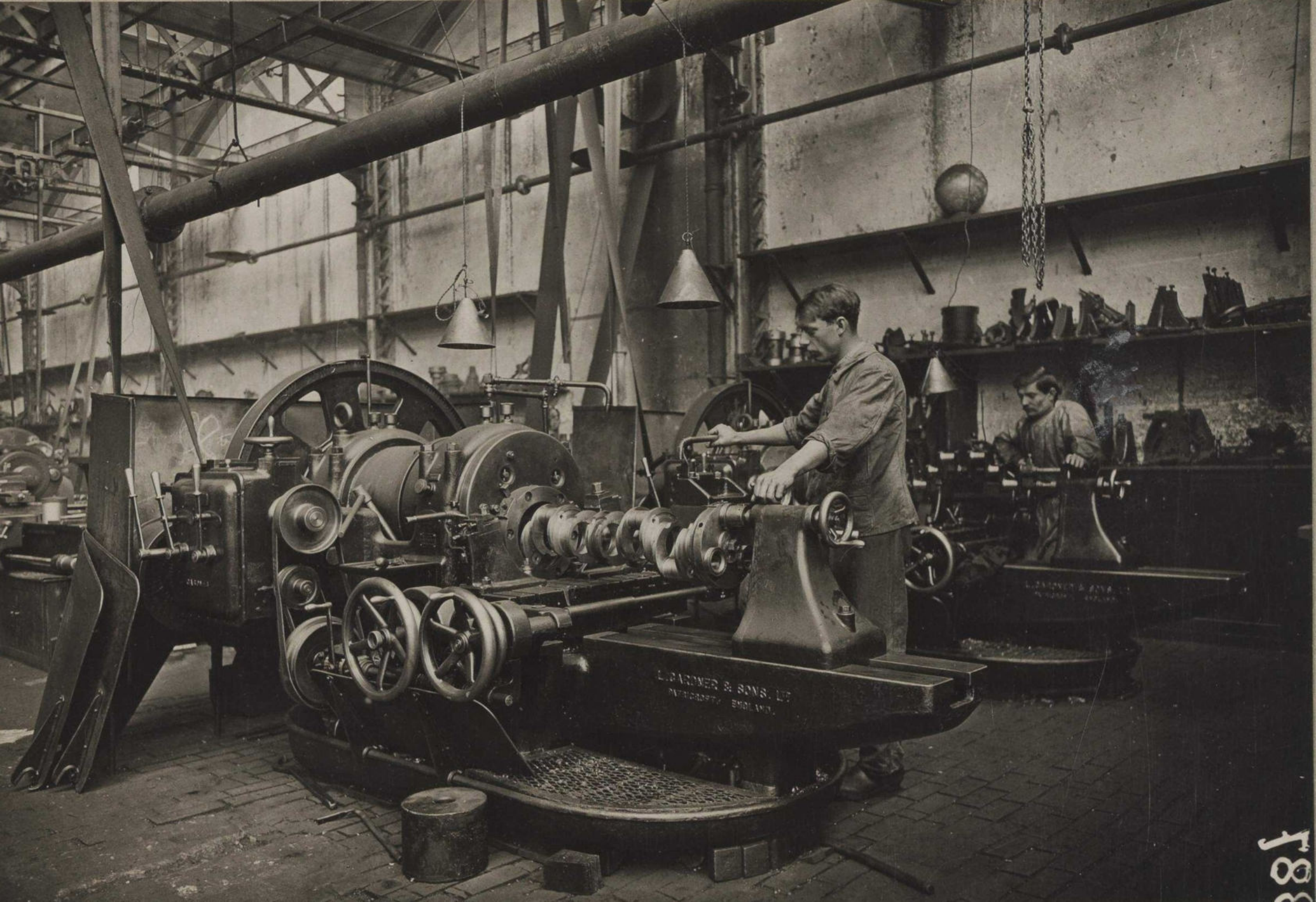


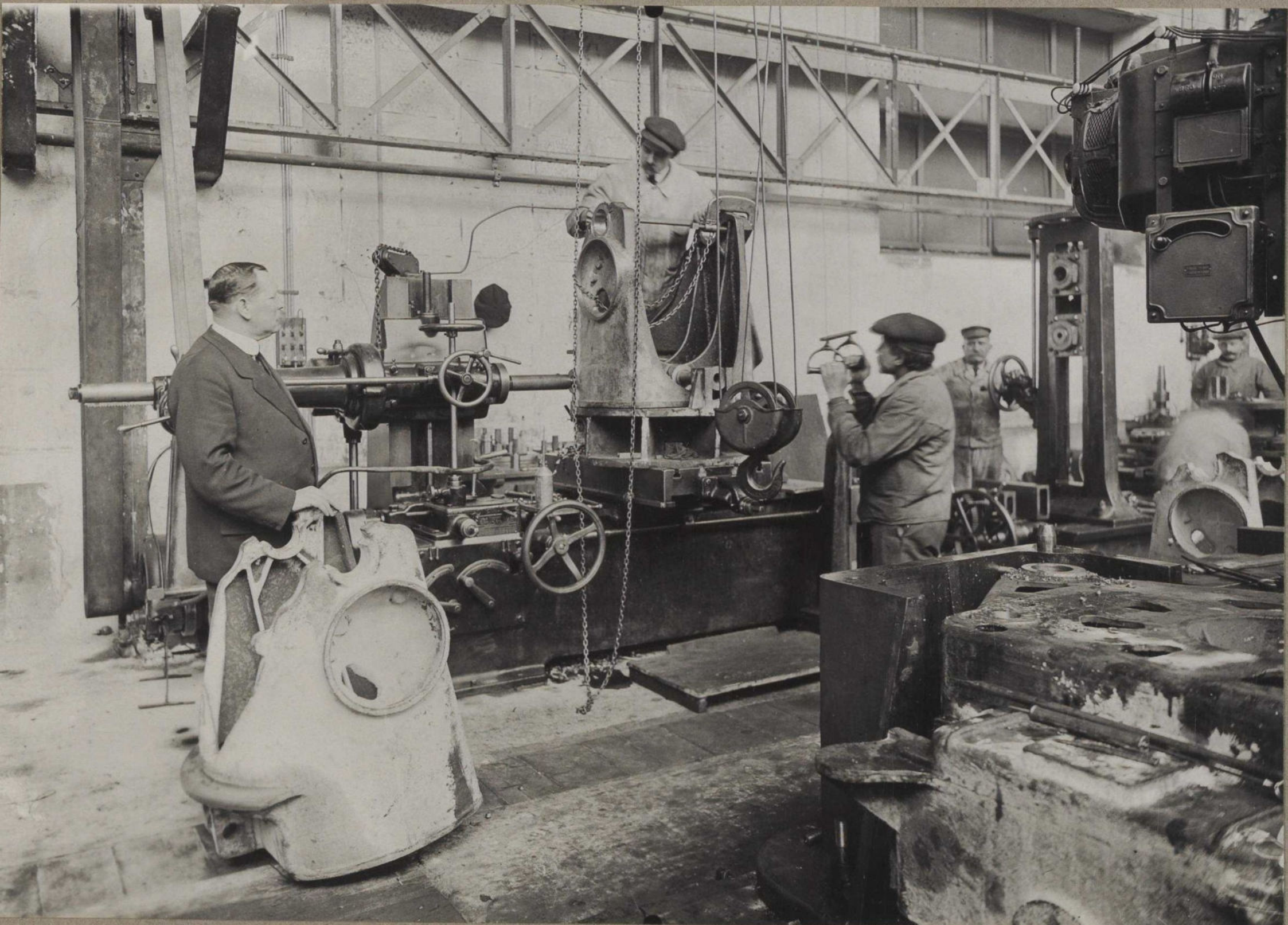


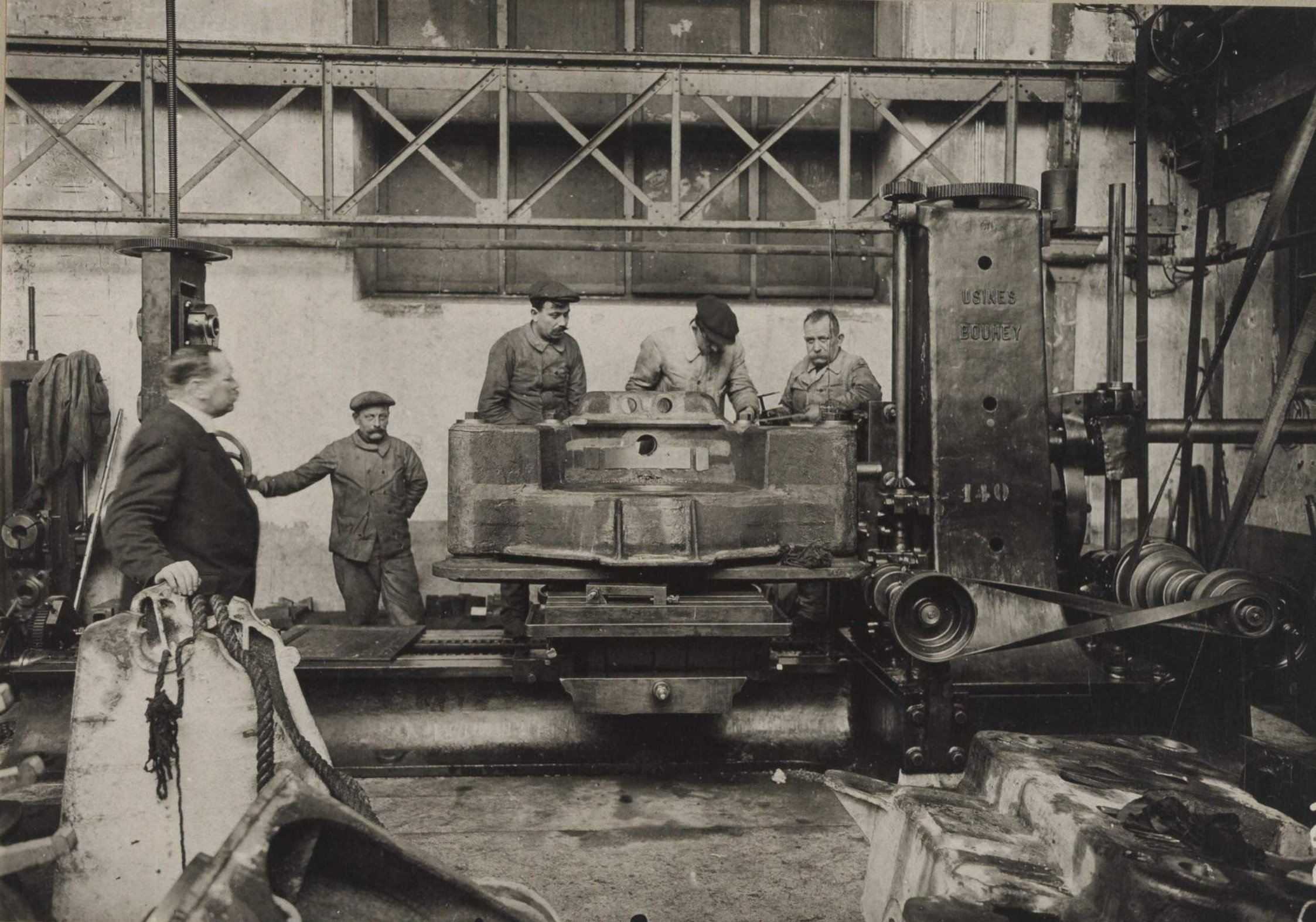
BACHT MACHINE CO.

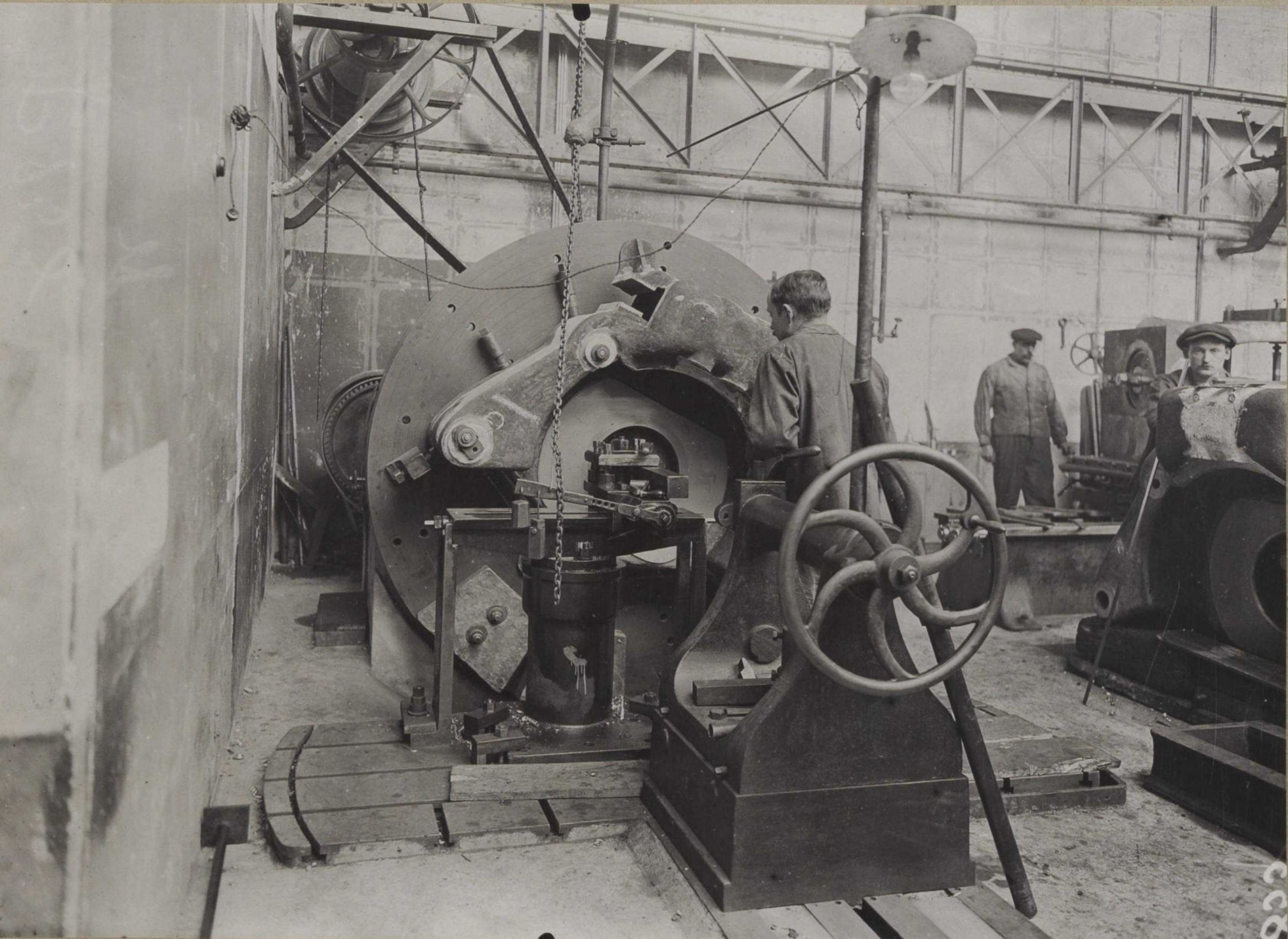
220

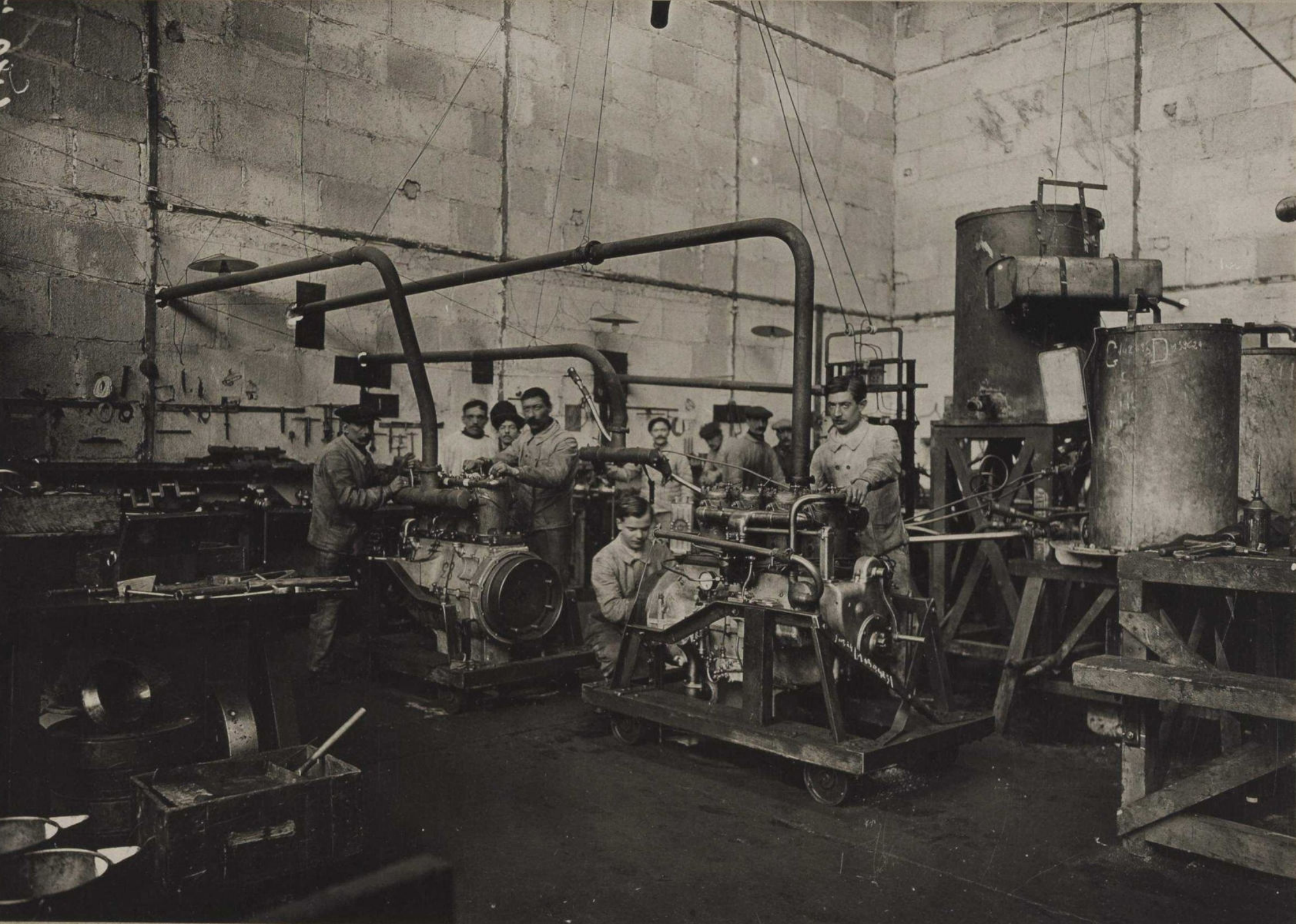
080

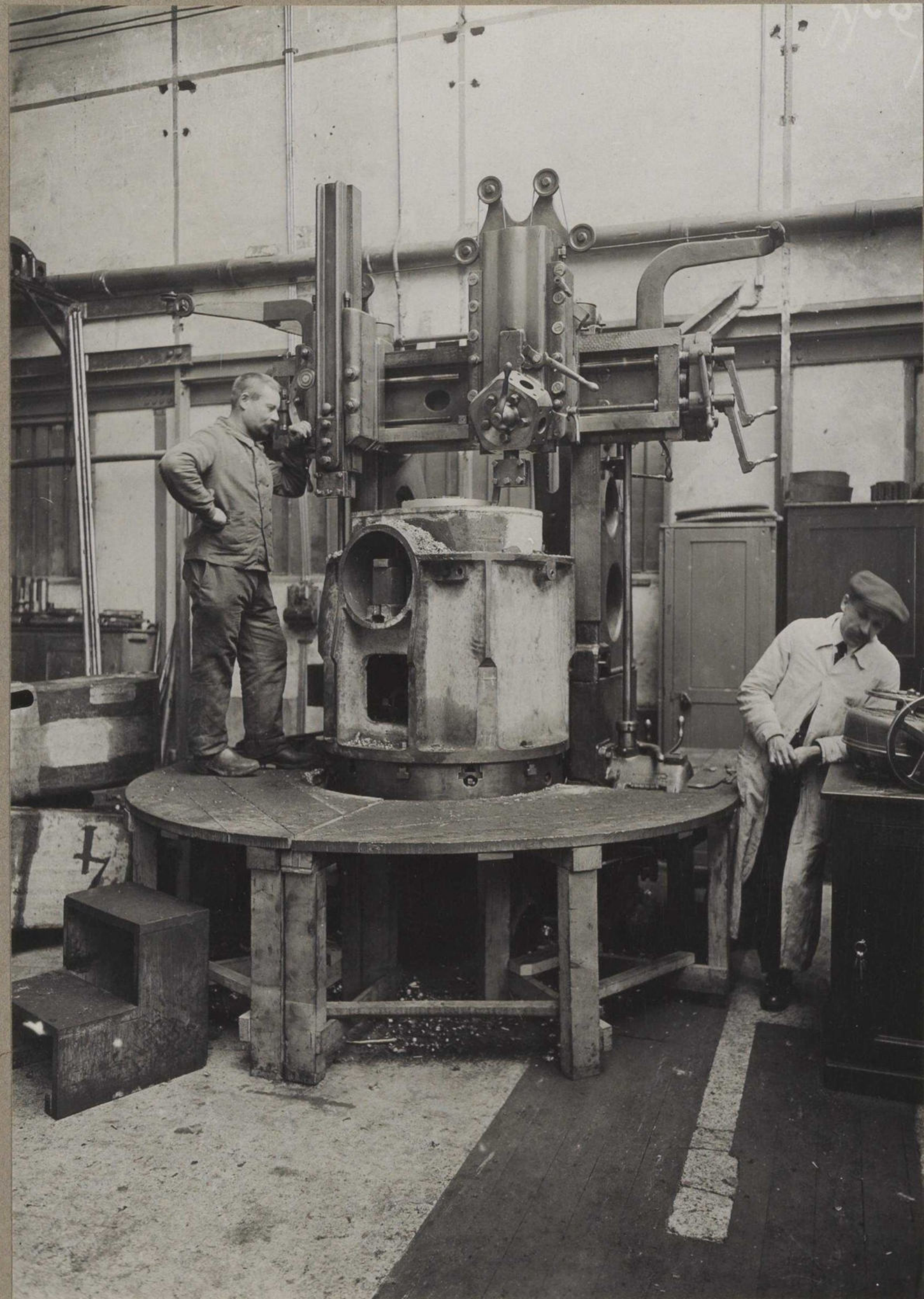


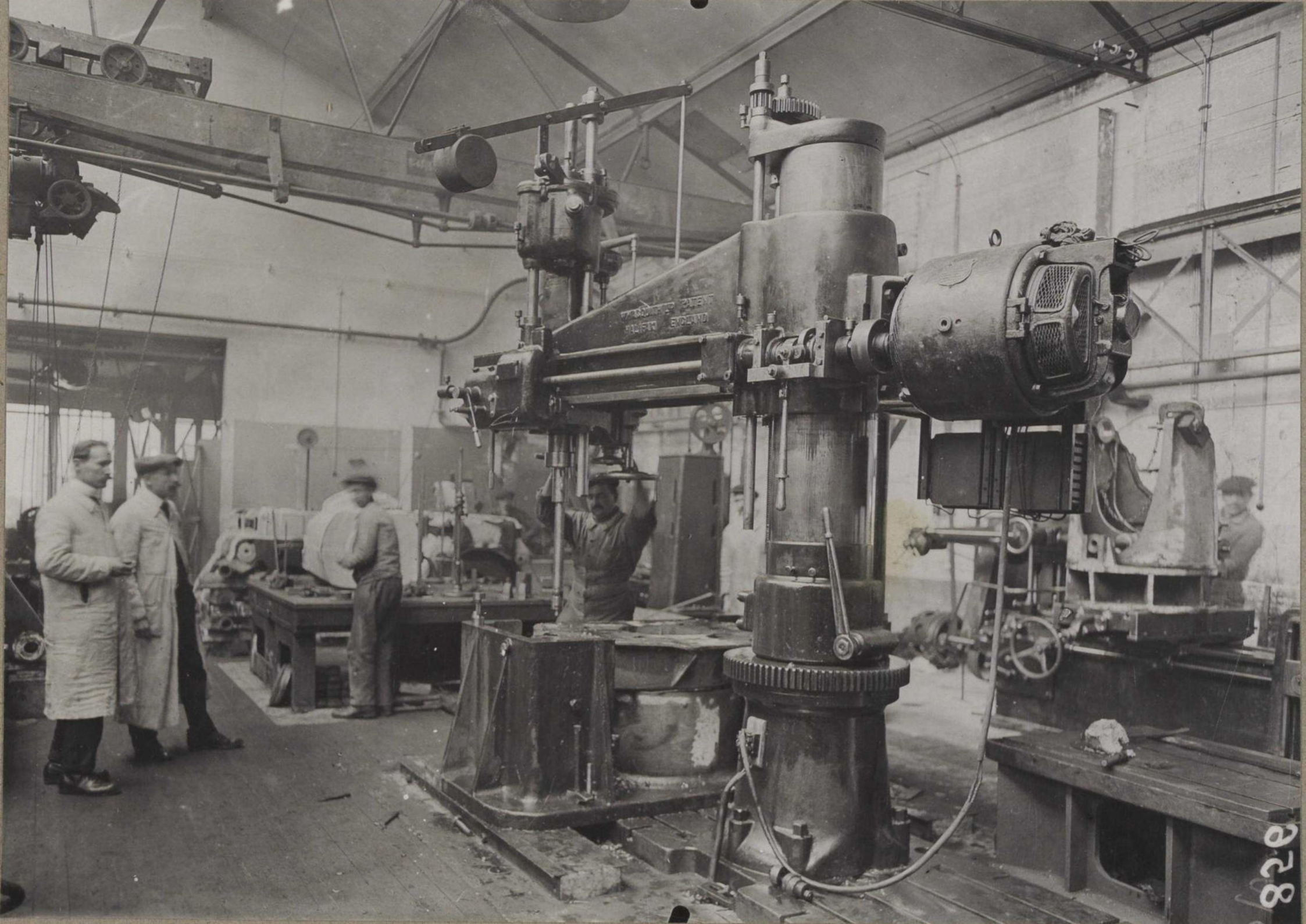




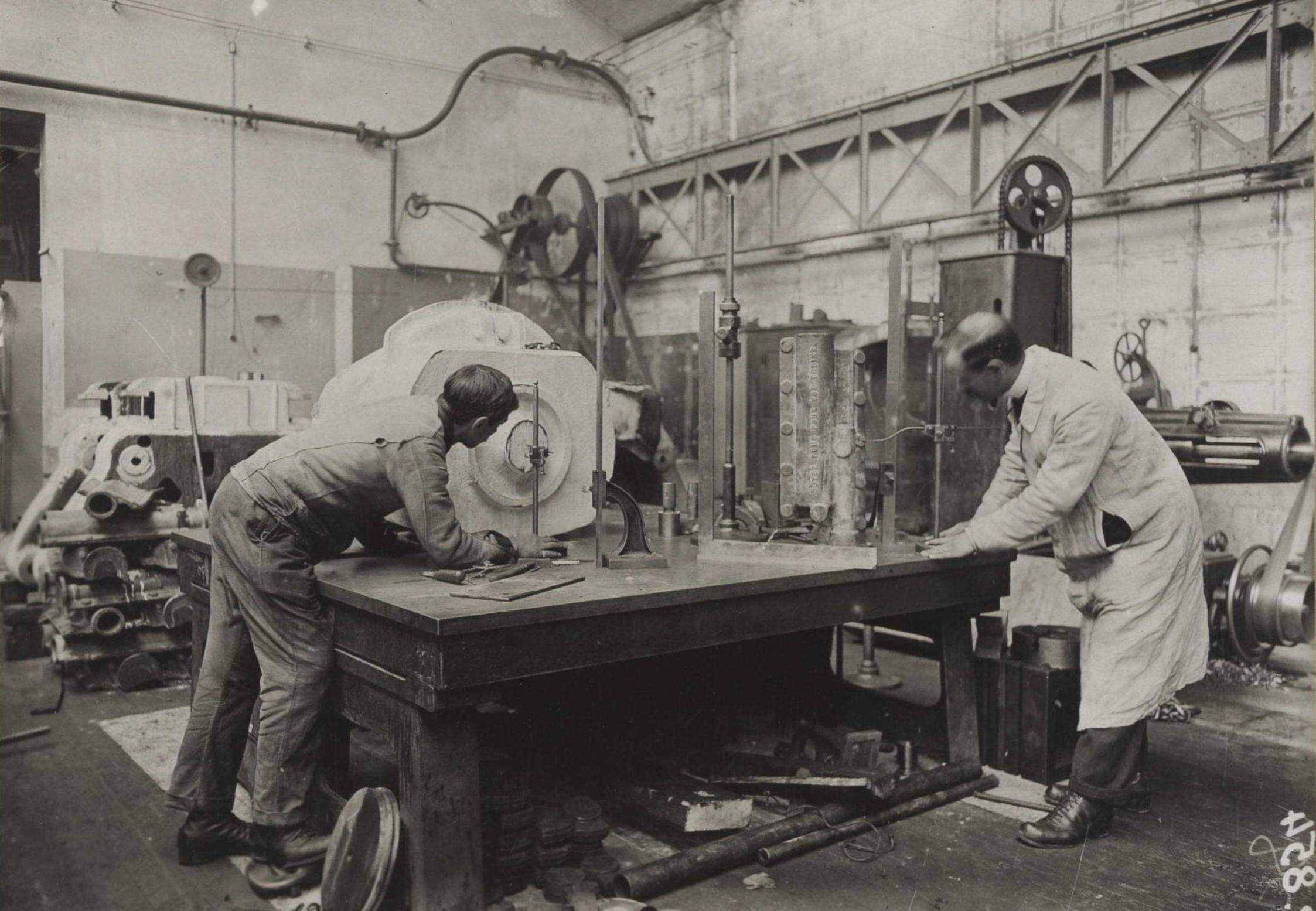












428











ÉTYENNE FORGE
QUAND on a FIN de
21e SERVIR.

BOYÉ

