

Historic, archived document

Do not assume content reflects current scientific knowledge, policies, or practices.

287



CHAMPLAIN
View
GARDENS

1938

DESCRIPTIVE LIST

Gladiolus

ELMER GOVE
BURLINGTON • VERMONT



PREMIER HENRY

A must have



Order Blank

CHAMPLAIN VIEW GARDENS

ELMER E. GOVE
BURLINGTON, VERMONT

Name (Mr., Miss or Mrs.).....Date.....
Please write plainly

Street and No., P. O. Box }
or R. F. D. }.....

Post Office.....County.....

Express Office.....State.....
If different from P. O.

Ship when.....

Anything pertaining to this order, please write on back of Order Blank or separate sheet of paper.

AMOUNT ENCLOSED	
Money Order	\$.....
Check - -	\$.....
Cash - -	\$.....
Stamps - -	\$.....

Quantity	VARIETY	Size	Rate	Amount
1				
2				
3				
4				
5				
6				
7				
8				
9				
10				
11				
12				
13				
14				
15				
16				
17				
18				
			Balance Forward	

In making out order please give price from latest price list. Continue order on other side.

Quantity	VARIETY	Size	Rate		Amount	
	Amount Brought Forward					
19						
20						
21						
22						
23						
24						
25						
26						
27						
28						
29						
30						
31						
32						
33						
34						
35						
36						
37						
38						
39						
40						
41						
42						
43						
44						
45						
46						
47						

FROM

Champlain View Gardens

Burlington, Vermont

GREETINGS

I want to take this opportunity to thank all my customers of last season for the best season's business I have ever had. It surely is appreciated. I have heard from many of these customers and find that on the whole the season was very good. Most everyone had good glads and a generally successful season. Occasionally someone had trouble with thrip or disease but this was rare.

The thrip is being overcome largely and I think can be by anyone who plants clean bulbs and sprays faithfully.

This year I have much the largest stock (about 90 acres) that I have ever had and I can say that I honestly believe the quality of my bulbs this year is the best I have ever had since I have been in business. Last year due to a bad digging season I had some trouble in certain varieties but this year practically everything is bright and clean and should give all my customers fine results.

This year as you will see I am introducing more new varieties than usual but they are good. It will pay any commercial grower of bulbs to get a start with these new kinds. Most of them will become standard varieties in a very few years. Token, though introduced at a low price because of a fair stock to start with, I believe will be one of the finest commercials grown.

Yours for more and better glads.

Elmer Gove.

Apostle of Beauty.

WHAT VARIETIES TO GROW

With the great number of varieties listed in most gladiolus catalogs it is rather bewildering, especially to beginners, to pick out the proper varieties. No one can tell you definitely which ones to select but I am going to give you some general advice here that may help you.

Beginners

If you are not a real fan and do not care to keep the names of the varieties but just want a good garden of nice kinds, buy the unlabelled collections. These are I believe the best unlabelled collections to be had anywhere. They consist largely of varieties listed in my regular list but also contain some others not listed. They are very good value.



"Yours truly in a field of Bleeding Heart bulbstock"

Fans and Advanced Amateurs

If you are fan enough to want to keep the varieties separate, and want to work up a collection of the varieties that suit you the best, no one can tell you which ones to pick out. Tastes differ so largely and growing conditions are so different in various parts of the country that no grower or anyone else can tell you which varieties will do the best for you or which ones you will like the best. So the only way to do is to try out the various kinds which from the description seem to fit your needs the best and try these and then by selecting and discarding you can build up a collection that will suit *you* whether it does anyone else or not. You are the one to please. I will say however that varieties that I have given 3 and 4 stars are the ones I especially recommend though no doubt you would like many of the others, possibly some of them better than the higher starred varieties. But the 3 and 4 starred ones are the ones that I recommend and they are generally considered best.

For Exhibition

If you want to grow for exhibition and get a kick out of growing the best ones you can and beating your neighbor on the show bench select what appears to be the best from those varieties marked "Ex." Those are the real exhibition varieties and the high starred ones are best.

Now however some of the shows are giving prizes in the decorative class so any of those marked "DEC" that appears from the descriptions to be the best will be all right to grow for exhibiting in this class.

Then there is also the "small decorative" class but I do not list many varieties in this class. Nadia is one of the very best and Olive Marie Brown and Ella May and Orange Butterfly. These are all good and are very fine for the garden too but many people are not beauty conscious enough to appreciate these smaller flowers. Too many people think that a glad has to be very large to be beautiful. Some large glads are decidedly not beautiful tho they sell well because of their size.

"I purchased your last year's offer of the No. 1 collection and it is my privilege to state that they were the most beautiful flowers I have had during the past 20 years, also many friends have passed the same remark."

—E. RAU, N. J.

"The varieties you shipped me last year were very beautiful indeed. King Arthur is a magnificent glad. They bloomed beautifully from No. 4. Albatross was the best white on the place. It developed immense flower heads and was admired by every one who saw it. Minuet was a fine variety and did wonderfully well for me. Was never more pleased with bulbs than those which you sent me and your count was very generous to say the least."

—CLARENCE KAY, Penn.

Cut Flower Growers

If you are growing or shipping cut flowers for the large markets like New York you don't need a large number of varieties. Picardy is the most popular pink one now though the growers are coming to appreciate Debonair better and some prefer it to Picardy. Though there are some up-to-date florists the majority of them are many years behind the growers. If they get a variety that they like and that they can make money on they stick to that variety and are hard to educate to other varieties. This is more true in the large cities where the florists buy their supply from the wholesalers.

However if you are supplying the retail florists direct in large or small cities you can get them interested in many more kinds. In some places the florists are more up-to-date than they are inclined to be in New York and are glad to try out some of the newer and better varieties and if you are growing for this direct retail florist trade by all means grow a larger number of varieties and try to get the florists interested because if the florists will handle more varieties I am sure the public will be very glad to buy them. A good share of the public do not know of the many kinds of beautiful gladiolus. Too often the florists have limited the public to just a few of the old kinds. Of course a cut flower grower can pay only a certain price for bulbs if he is to sell the flowers at a profit but he should buy small quantities of the newer kinds and work up a stock from the bulbets or small sizes. Here again the 3 and 4 starred varieties are considered the best but some of the other varieties are well worth trying.

A florist's business is largely funeral work so they prefer mostly the pastel shades and lighter colors though they can use a certain amount of darker colors and should use some kinds like Vagabond Prince that they can decorate their windows or stores with to attract attention.

If you are growing for a roadside stand you can grow many more varieties than you would if you are selling to florists as the general public buying gladiolus for house decoration like a large assortment and will be glad to get dark and odd shades, smokies, dark reds, blues and most anything that is *different*.

Bulb Growers

If you are growing gladiolus for bulb sales grow the varieties which from the descriptions appear to be the ones that are going to be grown for some time. Some varieties pass out of the picture soon while others that are especially recommended will continue to be popular for years. The varieties for which there is the greatest demand are the ones that become commercial varieties—that is that are grown for cut flowers for the florists. The odd colors do not take so well as they are used mostly for the home garden and for amateurs. *If you are a beginner* do not make the mistake of many beginners and buy too many varieties. If you have only a limited amount of money to put into glads it is better to put it into a larger quantity of a few good ones than to spread it over too many kinds. I have seen some beginners in the gladiolus business go broke and pass out of the picture by buying every new thing that came along instead of investing more heavily in just a few of the best kinds until their capital would allow them to expand. I know when a person gets the glad bug that all the descriptions of the new ones look awfully good to them and they want to try them all but I would advise beginners to go slow and not stock up with too many kinds. The most money is in the high priced varieties that are *good*.

"Believe it or not from 100 bulbs of Debonair I cut 85 spikes measuring 66" tall. The flower heads measured 30-40 inches long. This without any irrigation other than Mother Nature. Had my first bouquet of Duna this year. Put a dozen or so in a black vase. Don't think a prettier sight ever grew."

—R. B. STUBBLEFIELD, Ill.

"I am just sending a line to say my medium bulbs certainly made fine blooms this summer."

—MRS. H. E. RICE, Vt.

Varieties of the Future

Recently someone asked me to give him a list of the varieties that I thought would be going the strongest five years from now. This is a pretty hard question as when a variety is first introduced the introducer can't always tell what the public reaction to it will be. All hybridizers who put out new varieties claim wonderful things for them and I think they are honest. But the trouble is that they are just not good judges of glads. One of the best known growers in the country has told me that there are not over ten first class judges of gladiolus in America, and, I suppose to be polite, he named me in this list. The fact is that a lot of growers are not really good judges of their own originations and are not beauty conscious enough to be good judges of glads in general.

I can't give you a list of names of the varieties that are going to be the most popular five years from now but here again the 3 and 4 starred varieties no doubt will be with us for sometime and I think you will be safe in ordering any of those—that is among the newer ones. Some of the older varieties are still 3 and 4 star varieties, and will be good for sometime, for exhibition or the home garden, but when a variety has been on the market for several years and has gotten low in price there is not much money in growing the bulbs and yet the variety as a variety may be as good as many higher priced ones.

TO HELP YOU

in selecting varieties I am giving you my idea of certain points which characterize the leading varieties.

Tallest

Albatross, Bagdad, Lady Winsome, Orange Sovereign, Regent, Shirley Temple.

Earliest

Al Smith, Bernece, Champlain, Colossus, Gladys Clegg, Escort, Excellence, Miss Bloomington, Token.

Most Ideal Stem

Apricot Glow, Beacon, Debonair, Eloise, Maid of Orleans, Miss Bloomington, Regent, Simcoe, Sonatine.

Largest

Aladdin, Bagdad, Colossus, Miss New Zealand, Picardy, Premier Henry, Rewi Fallu, Takina, Wurtembergia.

Longest Flower Head

Albatross, Bagdad, Beacon, Debonair, Golden Goddess, Lady Winsome, Rosex, Shirley Temple, Symphony.

Most Heavily Ruffled

Amulet, Coquette, King Arthur, Mary Elizabeth, New Era, Premier Henry, Shirley Temple, Solveig.

Having Most Open Flowers at a Time

Black Opal, Damaris, Edith Robson, Frank J. McCoy, Gertrude Swenson, Golden Goddess, Lucifer, Pinnacle.

"Have had splendid results from your bulbs producing flowers the envy of all my friends."

—W. S. JONES, N. H.

Heaviest Propagators

Aladdin, Bagdad, Betsy Bobup and Betty Nuthall, Debonair, Picardy, Rapture, Rewi Fallu, Token, Vagabond Prince.

Most Striking

Beacon, Brightside, Colossus, Golden Goddess, Lucifer, Lutex, Mywag, Premier Henry, Regent, Rewi Fallu, Smiling Maestro, Vagabond Prince, Wurtembergia.

Most Beautiful

It is hard to say which is the most beautiful variety as tastes differ so much, but to my mind the following should be in any list of most beautiful glads.

Alayne, Amberglow, Amrita, Amulet, Angelus, Barcarole, Conquest, Coquette, King Lear, Mrs. Langford, Nadia, New Era, Olive Marie Brown, Picardy, Premier Henry, Regent, Reverie, Rewi Fallu, Rima, Sandra, Shirley Temple, Solveig, Token.

A Classic

The following paragraph describing the various stages of gladiolus growing has attracted so much attention and been quoted so many times that I am repeating it again.

“There is a fascination about growing glads that becomes a hobby, then a craze. There are five stages of interest in growing “glads.” First you just grow them as an amateur, same as you would any other flower. Then as your interest in them increases you become a “fan,” then a “bug,” then a “nut,” then finally a “fiend.” When you reach this final stage you are hopeless. You think of “glads” all day, dream of them at night, spend every available minute of your time in the garden, talk of them, visit the shows, read all the catalogs and spend all your money on them. You will look lovingly at the last flower in the fall, will handle over your bulbs in the wintertime and will hardly be able to wait till you can lovingly plant the bulbs in the spring. From then till the first bloom appears is a period of happy anticipation. When finally the spikes of bloom begin to appear you are in heaven.”

DO YOU WANT HELP

in your gladiolus problems? We are always willing to help our customers in any way we can in regard to their gladiolus. We send a four page circular of growing instructions with the bulbs. If you want this before ordering just drop us a card and we will send it to you. If you want to go into the subject deeper would suggest a Gladiolus Book by Rockwell which sells for \$1.35 prepaid. We can take your order for that. Or there is another larger book by McLean-Clark-Fisher which sells for \$3.15 prepaid, but there are only a very few copies of this left so they may be sold out early.

Though as I said above we are always willing to help you out in any way we can please do not ask us for help until you have read this catalog and got my planting instructions as most of the questions are answered in one of these two places. I am giving what information I can about the various varieties in this catalog and giving blooming dates as far as I know them. Blooming dates are not very reliable anyway as they vary so according to location, weather, etc. Please do not ask for quotations on varieties not listed in my catalog. Every year people write in for quotations on varieties that I have not grown for years or have never grown. This wastes both the writer's and my time.

I spend weeks making up my catalog and price list and answer most of the questions here that growers would want to know about. Read the catalog and price list first and then if there is further information you want I will be very glad to help you out if I can.

“I have had most satisfactory results with all bulbs that have come from you so that I no longer try to purchase elsewhere.”

—MRS. F. W. SMITH, Ga.

Culture of Gladiolus

With every order that goes out we send a circular giving all the necessary information about growing them. If you want to go deeper into the matter we have a book on the gladiolus by Rockwell which sells for \$1.35 prepaid, or we give it free with a \$12.00 order if you ask for it and if you haven't had one before.

If your bulbs are received in very cold weather put the package in a cool place for several days without opening it and then open it up and see if the bulbs appear all right. If they appear soft let us know at once as it will indicate that they have been frozen. It is also a good plan to inspect all bulbs occasionally during the winter to see if they are all right. If they have been frozen they may not show it much at first but later would become hard and of course would be worthless. They are best stored in a cool dry place and it is well to open up the bags and if there are a large quantity in a bag it is best to spread them out and give them air as they might become moldy if any quantity is left in the bag.

Though glads are considered about as foolproof as any flower and will generally give a good account of themselves under most any conditions it does pay to give them good soil and plenty of water when they are coming into bloom. The better care you give them the better blooms you will get though do not overdo the fertilizing. They will get along with just an ordinary amount of fertilizer provided they have plenty of water at the proper time and good cultivation. Too much fertilizer is liable to make the flowers soft and to hurt the bulbs.

Disinfecting Bulbs Before Planting

Though most all growers mean to send out bulbs free of thrip, and I think most of us do, whenever thrip come in the summertime the fault is always laid to the bulbs. To be sure in your own mind that they are clean, by all means disinfect them with Rototox, Bichloride of Mercury or some other good disinfectant. Or if the bulbs are received in the winter time naphthalene flakes can be used but I would not advise using naphthalene late in the season after the roots have begun to swell as it will hurt them at that time. If you can keep the bulbs in a temperature between freezing and thirty-seven or eight degrees for two or three months that will kill all thrip eggs. Though your bulbs may be perfectly clean be sure to give them some treatment to convince yourself that they are clean. Then if you do get thrip you may know they come from outside sources and the dealer will not be blamed.

Opportunities for Growers

Glads as a flower are not appreciated by the general public as they should be. There are millions of people in the country who do not know the newer and better varieties. I believe there is a great opportunity for growers to get into some of these newer kinds. Not necessarily the real high priced ones but some that they can afford to raise at a profit and interest the public and florists in these better varieties. Both the public and the florists certainly need lots of educating and I think it will be very profitable for the growers too to try it.

Now with better times coming along there was never a better time to start in than right now. Many of the newer kinds like Debonair, Duna, Bagdad, Beacon, Vagabond Prince and many others will certainly find favor with the public. If the varieties are a little too high to grow for cut flowers the grower can get a few bulbs to grow for samples and to show the public what can be had and then buy small stock or bullets to work up into a larger stock of blooming bulbs. There is money in it for anyone who goes at it right.

Price of Blooms

Growers raising flowers to sell direct to retail florists and for roadside stands sometimes ask about what price they should charge for blooms. I know that many roadside stands sell blooms for 25c a dozen and often this is all the blooms are worth but well grown blooms of the better varieties should be worth from 50c to \$1.00 a dozen. Most retail florists charge from \$1.00 to \$2.00 a dozen but of course they often have to make them up in sprays and designs and have a lot of expenses that the roadside stand does not have. Well grown Picardy or other first class varieties should be worth at least 50c a dozen and if they are extra nice

should be worth \$1.00 of anybody's money. And if the blooms are first class a florist should be willing to pay at least 4c for them. Try to raise them good and cut out the 25c a dozen business.

GUARANTEE

I guarantee to do my utmost to please my customers. I guarantee the bulbs to be free from disease and insects at the time of shipping. If anything goes wrong and the glads do not do well I want to know of it and if it is the fault of the bulbs will either replace them or refund the money and shall at all times be willing to do what I can to make my customers successful in their efforts to grow glads.

However I do not guarantee that the customer will like all varieties. Occasionally some one writes in the fall and complains because certain varieties he didn't care for and would like to exchange them. Of course this cannot be done. Further I do not guarantee that the bulbs



Looking across one of my bulblet fields

harvested will be good as so many things can happen due to bad growing conditions or disease in the soil or for some other reason the bulbs harvested may not be first class so if there are any complaints in regard to the quality of the bulbs it should be made on receipt of them or soon after.

Descriptions in this Catalog

In the descriptions of the various varieties I am trying to be as truthful and accurate as possible and describing the varieties as I see them. At the risk of being misunderstood and of having a lot of people disagree with me I am rating the various varieties by using stars the same as some magazines rate moving pictures. If you do not agree with these ratings please don't write me about it as I know that opinions differ among different people and next year I may change some of these ratings myself. Don't think because a gladiolus is rated only two stars that it isn't good because many of these two and two and a half star varieties are very well liked by many people and might suit you better than some of the higher rated ones.

I am not rating by stars the introductions of this year. Will wait until next year to do that and see how they perform in different parts of the country. Of course we consider all new introductions as rating four stars, and I think most of them will, but time will tell about that.

These ratings are based on all points, growth, propagating qualities etc., as well as beauty and general excellence of flower. I consider a 3 star variety very good. It is only the exceptional variety that gets 4 stars. You will see there are not many of those.

Order Early

The advantages of early ordering are that you will be sure to get what you want. Nearly always late in the season we run short of certain varieties and there are usually certain kinds that it is impossible to obtain from any other grower.

Then again if the orders come in early we can pick them out and have them ready for shipment at anytime you want. We ship all winter long up till the first of July. Always there is a rush during March and April and usually it is

almost impossible to gain much headway on the orders as they come in so fast at that time. If we have the orders earlier we can have them ready for shipment and it will relieve us of a lot of overtime work. And we can give the customer better service and satisfaction also.

Do You Want to Help Us?

You can help us by ordering early so as to avoid the rush, as they say. We are always terribly rushed in the spring months so you will get better service by ordering early and it will also help us.

Another thing when writing about an order of which you have already received an invoice or acknowledgment please give the number of this invoice which you will find at the upper left hand corner. This will save us a lot of time in looking up your order in our files.

Acknowledgment of Orders

We mean to acknowledge all orders sending an invoice within a day or two but sometimes late in the season when we are terribly rushed we occasionally get behind several days. This invoice that you receive on a yellow slip is an acknowledgment and a copy of your order. Read this over carefully to see that it is all right. The receipt of this invoice does not mean that your bulbs are coming before you want them shipped. We can ship at anytime you ask for them.

Size of Orders

As an accommodation we fill all orders of any size but as we lose money on orders of under one dollar we would appreciate it if the customer would make the order at least that amount. We occasionally get orders of less than one dollar, asking for extras also. On dollar orders we just about get out even so do not care for orders under that size.

Canadian Customers

Canadian customers have to secure a permit from the Destructive Insect and Pest Act Advisory Board at Ottawa, Ontario for permit to import bulbs. This doesn't cost anything but there is a duty on bulbs.

Join a Gladiolus Society

and get all the benefits such a membership involves. Join your local or state society and to get even more benefits join a national society.

The society that is going the strongest now and probably one of the very strongest gladiolus societies in existence is the *New England Society*.

This society publishes what I think is the best annual published. Contains around 170 pages and this year contains chapters from gladiolus growers in many different countries of the world. There are also a lot of pictures illustrating some of these articles.

MEMBERSHIPS:

Regular: \$1.00, including a copy of regular edition of "The Gladiolus" 1938.

Participating: \$2.00, including specially bound copy of "The Gladiolus" 1938 and all additional publications issued by the N.E.G.S. or the Gladiolus Institute during 1938.

Sustaining: \$5.00, including 1 copy specially bound edition, 1 copy of regular edition of "The Gladiolus" 1938 and all additional publications of the N.E.G.S. or Gladiolus Institute.

Life: \$25.00, including all publications of the N.E.G.S. and Gladiolus Institute with a specially bound copy of "The Gladiolus" 1938.

Applications should be sent to ALBIN K. PARKER, *Secretary*, NORWOOD, MASS., and remittance should be in New York or Boston funds, cash, United States or International money orders.

"We dug the bulbs that I received from you last season. They all turned out fine and made a nice increase."

—EVERETT ROBINSON, Oregon.

Pure Vermont Maple Syrup

Griddlecakes or Waffles and Syrup. Um! Um!

If you have never eaten the pure unadulterated Vermont Syrup you don't know what you have missed. The black blended concoctions sold throughout the country as Maple Syrup are not to be compared with the real Vermont Syrup any more than Halley is to be compared with Picardy. Then a lot of Vermont Maple products are not of good quality. I am a connoisseur of good syrup and send out only the best grade such as I would eat myself.

Prices are F.O.B. Burlington. A gallon can be sent as far south as Virginia for 35 cents and to the West Coast for \$1.00. The Express companies make a special rate on Maple products. Parcel Post costs much more. A gallon of syrup weighs 13 lbs. packed for shipment.

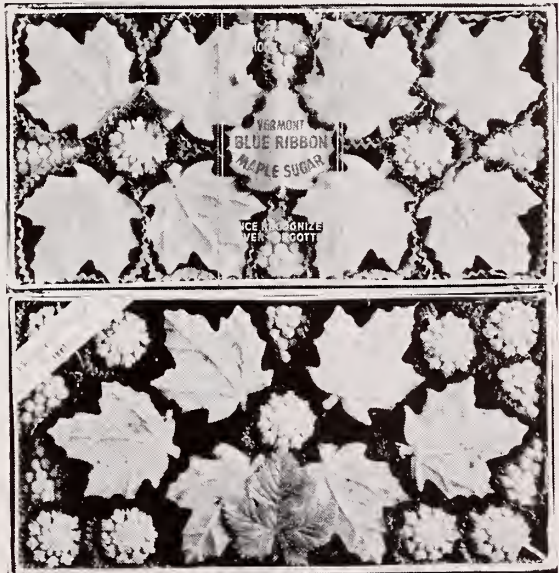
1 GALLON \$2.75 ½ GALLON \$1.50 1 QUART 90 cents
A case of 12 PINTS \$4.50 A case of 12 HALF-PINTS in glass \$2.75
MAPLE SUGAR. 2 oz. cakes 60 cents a lb. 5 lb. pail soft sugar \$2.75.
MAPLE CREAM, a delicious cream that can be spread. 1 lb. tins 65 cents. 5 lb. tins \$2.65.

Pride of Vermont Sugar Butternut Fudge

In addition to the above this year I am listing another brand of maple sugar that is the very finest quality to be obtained. It is put up in beautiful packages like the cut opposite. This is light colored and most delicious flavor and will remain soft for a long time. The two ounce cakes of maple sugar listed above will get hard in a short time.

I am also listing, as you will see by the cut, Maple Butternut Fudge filled with butternut meats. Either one of these two items are more delicious than the finest candy you ever ate. Nothing better is to be had.

Prices are \$1.00 per lb. box F.O.B. Burlington. If shipped with other goods the express will not cost anything extra. If shipped alone it would be cheaper to ship by parcel post. 14 lbs. of maple products can be sent as far south as Virginia and as far as the Mississippi River for 35 cents. \$1.00 will take them to the West Coast.



"The bulbs and bulblets received last spring from you were splendid. Regent bloomed beautifully from bulblets. It looks like a dandy."

—JOHN A. TALLANT, Mich.

"The glads I ordered from you this spring were beautiful and I had blooms from August 1 to October 15. I had two beautiful Jalna I grew from seedlings you sent me."

—MRS. E. M. SCHOONOVER, N.Y.

"You will be interested to hear that we took with our glads the first prize in the Millbrook Garden Club Flower Show this autumn."

—MISS G. L. ROBINSON, Conn.

SIZES OF BULBS



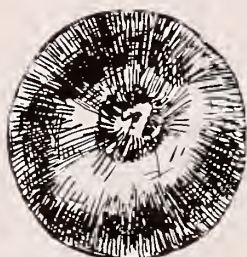
No. 1



No. 2

LARGE

These pictures show the average size of bulbs. No. 1 will often run larger than this but when they are too large because of age they are not considered so good as when a nice plump standard size, not over two years old from bulblets. At this size and age they are considered to be at about their best.



No. 3



No. 4

MEDIUM

Medium bulbs though they may look small to you in the cut will give you very fine bloom. In fact some prefer No. 3 to No. 1 in some varieties. A variety that naturally has a tendency to crook sometimes will give a better bloom and better spike from a medium bulb than from a large one.



No. 5



No. 6

SMALL

Though to a person accustomed to buying bulbs in the chain stores the small size may look too insignificant to produce blooms you will be surprised at the fine blooms they will produce. Occasionally you strike a variety that will not produce 100% bloom from these smallest sizes but in most kinds they will bloom satisfactorily though perhaps three or four weeks later.

In filling orders for bulblets by the package we give assorted sizes of bulblets, mostly medium but in the newer varieties or where they are sold in small quantities we pick out the largest ones to be had though some kinds do not naturally make large bulblets under any conditions. Size has nothing whatever to do about the germinating qualities. Small ones may germinate just as well as large ones.

Packages contain from 35 to 100 bulblets.



Extra Large Bt.



Large Bt.



Medium Bt.



Small Bt.

"I had beautiful flowers from your bulbs this year."

—G. T. GOODE, Missouri.

The "Lady of the Garden" Answers Back

I'm a quiet sort of person, rather diffident and shy,
And I'm prone to shun the usage of the personal pronoun, "I."
Heretofore I've been contented to just fuss around the house,
Catering to the whims and fancies of my own illustrious spouse,
But because I have been pictured by his vitriolic pen
As a grim and fearful warning unto all unmarried men
There's no virtue left in silence. I have made a solemn vow
That I'll tell the world about him. Can I tell 'em? Boy! And how!

I received a false impression on the day when first we met.
I thought him a mental giant, but my judgment was all wet,
And a slightly cuckoo writer with an absent-minded pan
Is the thing, Oh, saints forgive me, that I picked out for a man.
I could stand the midnight silence while he sat for days and days
Groping through his utter vacuum for some neat, high sounding phrase,
But it drove me to distraction, threatened my domestic bliss,
When for weeks he'd ponder should he plant his glads like this or this . . .

I was taught that 'twas in springtime one should put on window screens,
But they stay down in the basement, where my man, in denim jeans,
Is engaged in cracking bulblets. When the screens our house adorn
The long, summer days are waning, and the last, lone fly has gone.
Not until the frosts of winter wrap us with their biting chill
Ever has a welcome storm sash settled on our window sill,
For he's gone completely crazy. Fit, believe me, to be tied,
And he knows no lucid moment 'till his bulbs are stored and dried.

Oft while I was entertaining someone socially elite,
In the goofy guy'd come barging, face begrimed, with muddy feet,
Crying, "Hey! How's this for placement! Boy, oh, Boy! That's Timbuctoo!"
While I'd pray the floor would kindly open up and let me through.
Once when asked to face the ladies of the Literary Guild,
And address them on the subject, "Can Bill Shakespeare's Place Be Filled?"
He arose, and to my horror, in a short time cleared the hall
By a forceful exposition on "The Care of Corms In Fall."

I had always wished to travel, but the farthest from our thatch
That I got, was when he'd drag me down to see his seedling patch.
And if I expressed a longing to set sail for Trinidad,
He would merely yawn and murmur, "What a swell name for a glad."
I am sure that no catastrophe could so disturb his calm
That it would not remind him of his gladiolus farm,
And I'll bet, had the Grim Reaper called him from the haunts of men,
He would have but stirred and muttered, "Well, it's planting time again."
Oh, it drove me to distraction, but at last the worm has turned,
And now I'm finding happiness in what I once had spurned.
So if the household duties now my lesser half confine,
My conscience does not prick me. It is his hard luck—not mine.
Oh, I may be in the garden, "in a blissful, happy trance,"
But that guy is in the kitchen, doing my old song and dance.
And while he is drying Junior it does my heart good to find
That the sprinkler I'm now tending is a wholly different kind.

—BURTON L. SPILLER.

THE PALMER STRAIN

This strain originated by E. F. Palmer of Canada is noteworthy because of the most unusual beauty of form and color which characterizes most of the varieties and also for its vigor and heavy propagating qualities. Picardy, the forerunner of this strain, is recognized by everyone as the leading gladiolus on the market today. This variety is not only very outstanding in itself but is the parent of many fine seedlings that are being raised by growers everywhere. It is changing the whole gladiolus business and raising the standard of the gladiolus in real beauty.

Aside from *Picardy* there are many other varieties in this strain that are infinitely more beautiful than most of the other varieties on the market. This strain is making the gladiolus public beauty conscious. Another grower has objected to me calling this a distinct strain but after seeing the varieties that have been introduced the past two or three years and the present year and the seedlings that are still to be introduced I am more convinced than ever that these varieties do constitute a distinct strain of glads.

Growers from various parts of the world write me that the Palmer varieties are preferred by the public in general and many people can recognize a Palmer variety on sight.

I am exceedingly proud to be the introducer of the *Palmer* varieties as I positively believe that no other strain of glads in existence is equal to them.

I am the sole selling agent of the *Palmer* varieties throughout the world except in Canada and I can sell there. Mr. Palmer does not sell at retail to anyone even in Canada but sells through other dealers, so unless you live in Canada and are a dealer do not waste your time and Mr. Palmer's by writing him for a catalog as he will simply refer the letter to me. If you live in Canada he will refer your letter to a Canadian grower or dealer who handles his bulbs.

1938 Palmer Introductions

I am very proud to be the introducer of the following varieties for this year. They are all of very fine quality and are bound to be headliners for years.

Aladdin (32196) (*Picardy* x *Royal York*.) Large bloomed robust exhibition. Color grenadine to grenadine pink in throat and with moderate light cream blotch. Blooms very large, waved, 8-10 open at once and total of 20 buds on a strong straight spike. A very showy bloom and an exceptionally strong grower. This is a real wonder glad. Fine propagator.

Amulet (32204) (*Picardy* x *Wasaga*.) Decorative. Clear capucine orange, unmarked. Blooms of medium size, heavily ruffled and of unusually heavy texture. 5-6 blooms open at once and 16-18 total on strong, wiry always straight stems. Amulet is most attractive in color and new and distinctive in type. Award of Merit C.G.S. Guelph 1936. Award of Merit, New York 1937 Metropolitan Show for best seedling in the Show in a large field of fine varieties.

Carillon (32281) (*Rosemarie Pfitzer* x *Picardy*.) Decorative. Clear La-France pink with unmarked creamy blotch. Bloom medium large, wide open, roundish in form. Moderately waved. 5-6 open and 16-18 total buds, invariably well placed on uniformly straight spikes. A most dependable performer and most attractive in color and form. Color is somewhat like *Coryphee* but the stems are very tall and straight. Should make a fine commercial.

King Lear (32273) (*Ramasses* x *Picardy*.) Decorative. Large clear deep rhodamine purple self. Blooms large, heavily waved and ruffled. 5-6 blooms out, 18 total on tall, strong, wiry stems. Excellent in color and form and a real addition to its color class. The most beautiful purple I have seen. Usually has a silver line on edge of petals. Very early.

Sari (30151) (*Purple Glory* x *Picardy*.) Decorative. Early beautiful clear purple somewhat lighter than *King Lear*. 5-6 medium large blooms open. A wonderfully beautiful variety that I feel sure will become popular.

The Palmer Strain of Gladiolus

Acadia ★★½ (Dec) (Com) (80) Geranium pink shading lighter toward the center with a blotch of cream yellow with pink lines. 5-6 well arranged blooms open on a medium tall straight spike. This variety does not grow so well from bulblets as some kinds but from bulbs makes a very fine commercial. The cut flower growers like it.

Amberglow ★★★ (Informal Dec) (Com) (70) Clear empire yellow, (Ridgeway), or in common language, amber. A deep very rich unusual and beautiful shade with an attractive form. 6-8 open on a tall spike of 16-18 buds. Medium large. Placement not always perfect but very fine in spite of the occasional misplaced bloom. For sheer beauty the finest yellow I have seen.

"Beacon, Vagabond Prince, Amberglow opened up fine. All three are certainly beautiful. I expect to increase on each one next season." —F. R. CATES, N.C.

Amrita ★★★★★ (Dec) (Com) (85) Shades of capucine buff. Perfectly clear color but sometimes slightly tinged with pink. Buds somewhat darker. Warm yellowish throat. Six or more large wide open waved and ruffled blooms open at a time. Strong straight spikes of 16-18 buds. A very beautiful pastel shade something like Wasaga, of which it is a seedling, but more beautiful. One of the most beautiful spikes of glads I ever saw was a spike of Amrita that Ralph Baerman had at his place in Oregon this past season. It is simply exquisite and will be very popular.

"For the more interesting part of the summer I must say that I had the best glad season ever. Of the 1937 introductions I find that Barcarole and Amrita performed the best for me, also, I am very pleased with the performance of Helena." —WARREN E. McAVOY, Mass.

Angelus ★★★ (Dec) (Com) (85-90) Clear medium salmon pink of an unusual shade with a clear cream blotch. Six or more open. 18 buds. Large wide open and somewhat waved and frilled. Tall straight grower. Very beautiful and a good propagator but last season I sold out so close on it that I am holding the price of bulblets up this year in order to work up a stock.

Apricot Glow ★★ (Dec) (Com) (75-80) Beautiful clear warm apricot prim. grand. Medium size. Tall straight stems. Very fine color. Very useful in hybridizing. One of the parents of Picardy and other fine varieties.

Bagdad ★★★★★ (Ex) (Dec) (90-100) Smoky old rose somewhat darker toward the edge and lighter in the throat. Faint creamy blotch marked with pink but practically a self color. 6-8 or more immense blooms open at a time. Sometimes grows so large that it could be classed in the mammoth class, sometimes reaching seven inches or more across.

Not a commercial color but does sell well at roadside stands or to the public for bouquets. One of the "must haves." The best in its color for exhibition.

"The first bloom to open of Bagdad was 9½ inch across. You can imagine the size of the spike that produced it. The first bloom on the second spike from this bulb was only ¼ inch smaller. Only got 2 large bulbs of Bagdad and they both brought two spikes of wonderful bloom." —MRS. ED. GILBERT, Oregon.

Barcarole ★★★★★ (Dec) (Com) (85) Clear rich live grenadine orange. No markings. 6-7 medium large waved and ruffled blooms of heavy substance open on a medium height spike of 18 buds. A very beautiful orange shade and one of the most beautiful varieties I know of.

Mr. E. Both, the well known hybridizer from Australia, got a bulb of Barcarole for hybridizing purposes. He wrote me that it was the most beautiful variety in the world. Said it was so beautiful that he kept enjoying the beauty of it and forgot all about hybridizing until the spike was half gone by.

"Vagabond Prince, Amberglow and Sandra certainly stand in a class by themselves. Which is the best is hard to say, each being a distinct color. Vagabond Prince is outstanding in the odd shades. Amberglow is without doubt one of, if not the best yellow, and Sandra is as good as Picardy and judging from the way it grew here it should be as popular as Picardy."

—WALTER T. KINGSLEY, Conn.

Beacon ★★★★★ (Ex) (Com) (75-80) Clear bright rose doree scarlet with large clear cream blotch. Unusually tall straight spikes with 8-10 blooms open. Blooms are medium large waved and somewhat ruffled. A very distinctive and unusual color. Beacon won for best 3 spikes in the show at Iowa State Show 1937. Blooms were shipped from my garden by Air Express.

I consider this one of the finest varieties on the market and I am sure that as soon as stock is available and the public see it that it will become one of the most largely grown glads in existence. See color plate on cover.

"Like Beacon very much. It is the best I have in its color."

—J. E. ODOM, Texas.

"I think Beacon is the most beautiful gladiolus that I have ever seen."

—J. G. THOMAS, Louisiana.

"The one bulb of Beacon sent me last season was a knockout. Haven't seen anything since Picardy as promising."

—HOWARD HINMAN, Conn.

Camellia ★★★★★ (Dec) (Com) (85-90) Blush white tinted pink with small vivid orange scarlet blotch on cream ground. 6-7 large well placed blooms open on a tall straight spike of 20 buds. A very beautiful and very vigorous variety and a fine propagator. One of the very best blotched whites.

Champlain ★★★ (Dec) (Com) (62-70) Clear light blue with inconspicuous darker throat markings. Very tall and straight with 6-7 large blooms open. For a blue a very vigorous grower. Will be especially valuable as an early cut flower variety.

Cherokee ★★½ (Dec) (Com) (65-70) Rose doree shading lighter in upper throat. Large blotch of dark rose which blends well with the general color effect. Tall spikes with 5-6 large well placed ruffled blooms open. Not so fast a propagator as some but I am having good reports on it. One of the earliest.

"Royal York was very fine. Cherokee was very good. Vagabond Prince was immense. Champlain is very good for an early blue. Lady Eaton was fine. Rosex and Premier Henry are very fine flowers."

—BEN LINZELL, Wash.

Coquette ★★ (Informal Dec) (Midseason) Very beautiful clear creamy salmon with cream blotch. Medium large. A variety for those who can appreciate beauty and for the artistic minded. It has its faults as it doesn't open many at a time and the stems are inclined to kink a little though not enough to hurt them. Opens well to the tip. Not a commercial flower but one that is really ethereally beautiful.

Coronation ★★½ (Ex) (Com) (80-85) Soft light salmon shading to cream and creamy yellow in throat. 6-8 large well placed blooms open. A beautiful creamy pink. Sometimes this variety does not grow so well from bulblets as we would like and its constitution is not so strong as some varieties have but when well grown is very nice. I get a lot of good reports on it.

"I had wonderful luck with my glads last season and want to tell you that Rosex, Coronation, Wasaga and Debonair were beautiful. Rosex and Coronation didn't do so well the year before but I don't think they could have been beaten this last summer."

—MRS. JOHN DECATOR, N. Y.

"I also want to say that you are correct in saying that Palmer's varieties are about as beautiful as can be gotten. In fact they are tops with me. I have 200 varieties to date."

—JOS. GROBER, Wisc.

Debonair ★★★½ (Ex) (Com) (80-90) LaFrance pink shading to shrimp pink with creamy throat blotch, lightly peppered crimson. A clear light pink but sometimes flakes darker. 6-8 medium large blooms open on a very tall always straight spike and with a flower head that often reaches three feet in length. A joy to cut for cut flowers as the stems are always so tall and absolutely straight.

Though for sheer beauty Picardy is usually better yet the cut flower growers are more and more coming to regard Debonair as a better all around cut flower variety than Picardy. I hear from a lot of growers who say that Debonair does better for them than Picardy does and some are discarding Picardy in favor of Debonair. I would not discard Picardy in favor of anything until I tried out Debonair and others but it is easily possible that Debonair may do better for you in various ways than Picardy does. It is becoming increasingly popular all the time and for the past year or so has been in big demand. Certainly no other variety produces such tall straight spikes with such long flower heads of beautiful pink blooms as does this variety. One trouble with Picardy is that it does sometimes crook from large bulbs if the weather is not right but you can rely upon Debonair always being straight.

"It is needless to say how well I am pleased with my last year's order of your bulbs. I never bought as clean looking stock and never had better flowers. Debonair, Duna, Royal York, Blue Admiral were in my opinion unbeatable. Picardy was fine but I class Debonair far above it for color, quality and placement."

—W. K. GWIN, Pa.

"I still say Debonair beats Picardy."

—H. W. HEATON, Missouri.

Duna ★★★½ (Dec) (Com) (80) Soft light pinky buff shading to pale yellow at base of lip petals. Back of petals a little darker. A beautiful clear distinctive new shade. 5-6 good size blooms open. A very fine florist variety. Its only fault is that it has some misplaced blooms but not enough to hurt it as a commercial flower. I have had reports of as high as ten open blooms all perfectly placed on Duna. Have also had fine reports of it from the southern states. They tell me that it will stand hot dry weather better than most any variety grown. The ladies all fall for this color. It is just the thing for florist use.

"I want to say a word about Duna. I had ordered a dollars worth of some bulb which you did not have so you sent me Duna. When I first opened the order I wasn't very well pleased as the catalog description of Duna did not seem very appealing. But when the first bloom opened I was amazed at the beauty of the flower. I don't think that your description even begins to do justice to this exquisite shade of buff. I combined it with Constancy and the effect to me was one of the most beautiful I have ever seen. Everyone who saw my flowers commented on the beauty of it."

—(Name lost)

"Duna was very fine. I would say that it was up with Picardy under light. The ladies all fall in love with it. The blooms stand up well. I had as high as ten blooms open and all good."

—JOHN R. MARTIN, Mass.

"Bulbs I purchased from you last year certainly gave me a lot of pleasure at blooming time especially Maid of Orleans and Duna."

—GEO. C. NICKLAS, Pa.

"Coronation and Duna are opening up wonderfully well. I have not seen Duna before. Aside from a slight displacement of florets it is a marvel."

—F. M. BARNES, Vt.

"Beacon was very fine here."

"Duna, Rapture, Debonair and Wasaga are all doing their stuff nearly as well as Picardy."

—H. R. HAGER, Iowa.

"The 6 Duna bulbs you sent me for trial were as Mr. Nitchman says, 'breath-taking in loveliness'. Mrs. Langford is going over big here. I had a spike in a vase when a florist wanted it so bad he gave 25c for it. It was the only one I had at that time. It had 10 open. Coronation is another beauty."

—A. M. SHAW, N. C.

"I heartily concur with the report of the splendid qualities of Duna. I have found that it is very superior in hot dry weather."

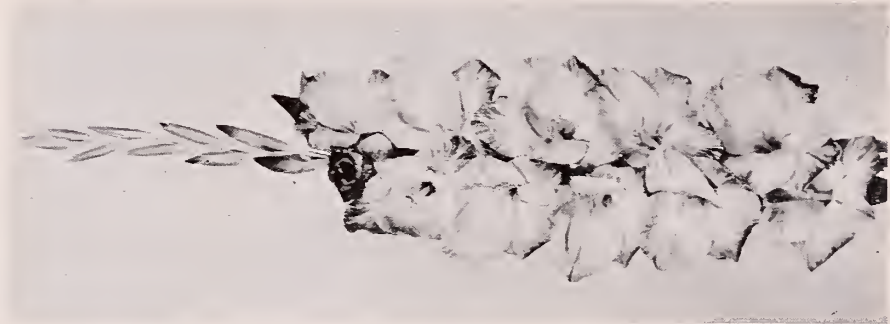
—ROLAND BARKER, Ill.

"We were very much pleased with the glad bulbs bought from you this spring. Even with this extremely dry summer they have done remarkably well."

—MR. AND MRS. W. P. TOWER, Mass.



Golden Goddess



Sahara



Duna



Aladdin

"I wish to comment on the splendid results obtained from the No. 4 Picardy bulbs which I purchased from you last year. The blooms were as large as those from my No. 1 bulbs and every bulb produced a flower which was beautiful. They were all exceptional blooms and I was very proud of them." —B. E. Cox, Va.

Evensong ★★½ (Ex) Large ruffled smoky with creamy blotch. 7-8 large blooms open. Has been called an improved Mother Machree. Has a richer color but usually not quite so many open.

"I want to tell you how wonderful your glads are. They bloomed wonderfully for me in spite of one of the worst droughts we have ever had. Evensong was very beautiful, so tall and straight. I just had one so am ordering more this time. And all the numbered seedlings, in fact all Palmer's glads, are the most wonderful I have ever seen. But I still think Wasaga the most beautiful of all glads. If I could have but one it would surely be Wasaga." —MRS. HARRY DILLEY, Ohio.

Golden Cup ★★★ (Dec) (Com) (80-85) Deep yellow sometimes flaked a darker shade. Blooms large and cup-shaped. 5-6 open. Is becoming increasingly popular all the time. Much earlier and better than Golden Dream. I think you will like it.

Hector ★★½ (Dec) (Com) Early midseason. Salmon scarlet with reddish speckles on cream throat. Lighter in upper throat. 5-6 immense ruffled blooms open at a time. A very fine variety that has been greatly admired both in the garden and at some of the shows. A coming commercial variety. Comes in early and in its season beats anything else in its color. I call it a salmon scarlet but I think the salmon predominates as it would not be called a red.

"Hercules was another one that I thought very beautiful, in fact if the bulbs I have were the only two in existence they could not be purchased at any price. *Hector* was also a very handsome flower and lasted nearly two weeks when cut. Golden Cup and Jonquil were beautiful, also Duna, Coquette, and Wasaga."

—AMELIA M. LAGUE, Van Nuys, Calif.
—CHAS. DOWNS, Mass.

Helena ★★½ (Ex) (Com) Late. Lavender pink with darker lines in the throat and sometimes slightly flaked darker. 8-9 large well placed blooms open on a tall straight spike of 16-20 buds. Strong grower, average propagator and to me one of the very finest cut flower varieties grown. I much prefer this to Minuet and I feel sure that as soon as stock is available that it will become a very popular commercial and exhibition variety.

"The glads particularly the premium ones, Sandra and Helena, have just come into bloom and are surely wonders. So was Beacon and Early Peach."

—G. O. POBIAL, N. J.

"Helena and Sandra were wonderful here, or in other words simply adorable. I surely liked Eloise. It certainly is outstanding. Vagabond Prince is a very unusual shade and very pretty. I intend to grow several of the newer ones next year."

—C. E. HUGHES, Ohio.

"Last fall my order amounted to over \$00. You sent some very fine extras. The finest was Helena which had a very long spike with two side shoots. It took almost a whole month for all buds to finish. Beacon had a long spike too. Miss New Zealand was 7½ inches across. I think it was very fine. Hector looks like a runner-up to Wurtembergia. The whole lot of bulbs did a fine job. I have them all dug now and they are fine."

—LESLIE GOSS, Penn.

Inspiration ★½ (Dec) (80-85) Deep shrimp pink with a cream throat. Blooms are beautifully ruffled. This variety is fine when it comes good but has developed the fault of often having a bud or two missing so leaving a bare spot on the stem. If it weren't for this it would be one of the most popular varieties.

"The bulbs received from you last year resulted in very beautiful flowers, especially large, and were highly appreciated."

—A. R. BRADLEY, Calif.

"Last year I entered Bagdad in the Buffalo Evening News Flower Show and won first prize. They must have been at least 5½ feet high and the blooms on them were wonderful. You might also be interested to know that up to date I have 1500 of your glad bulbs and if I only had more garden space I would like as many more. Your bulbs are all that you say they are and then some. I have fine blooms on the No. 3."

—CARL PLATTER, N. Y.

Jalna ★★★ (Ex) (90) Iridescent salmon and ashes of roses. A very unusual smoky. 10 or more large wide open usually well placed blooms open at a time. Fine exhibition variety. Good propagator. This one always brings forth plenty of Ohs! and Ahs! when shown on the exhibition table. Personally I don't call it beautiful but the public sure does like it.

"You will find enclosed a picture of some more Palmer varieties. Will say they did wonderful for us. The free bulbs, Beacon, Jalna, Cherokee from the smaller bulbs did exceptionally well. Blooms from No. 3 Champlain were admired by all who saw them. Please send your fall list as well as your spring catalog. I will say that in buying glads and dahlias that I have never been treated fairer or squarer nor have I ever bought better stock or received so much quality for the money."

—ROSCOE PLESSINGER, Ohio.

"Your Jalna and Vagabond Prince created a sensation here this summer."

—GEO. W. HUNTER, Mich.

Jonquil ★★★ (Dec) (Com) (65-70) Clear deep yellow. Up to 8 medium size blooms open on a tall straight spike. Medium size but with several open and the deepest clear yellow in existence. It is really very impressive. Will make a fine basket glad.

"Bulbs purchased in 1936 were real good. Jonquil is real fine. Quality of all stock is tops. Many thanks."

—E. B. HENDERSON, Canada.

Lady Eaton ★★½ (Dec) (80-85) Light rose pink with purple penciling on a nearly white throat. 6-7 large wide open blooms with distinctive rolled petals on a tall vigorous plant. This variety has never done so well with me as most of the other Palmer varieties but I get many good reports on it. Well worth trying.

"I want to state first that my gladiolus this season did well even though they were badly neglected. Among the new ones that did very well were Sandra, Lady Eaton and Amberglow.

"I consider Symphony a wonderful commercial variety. Grows very tall and straight, placement perfect."

—C. L. REARICK, Pa.

Maytime ★★½ Sdlg. H6141. (Dec) (Com) Beautiful light creamy salmon with a cream throat. An early and very fine variety that has been very well liked by a lot of the commercial growers. This variety has been known before only under number but so many people have written me that it did so well for them that they couldn't understand why I didn't name it so I am naming it now.

It blooms early and at the time it blooms there is nothing else in my garden so fine for a cut flower. Practically its only fault is that with me at least the flower heads are sometimes not quite so long as we would like but I have never had any complaint from customers in this regard. Be sure to try it. I think you will like it.

"Seedling H6141 (Maytime) which I like very much and as well if not better than Picardy. Am trying a few H6141 in the greenhouse this spring."

—A. TICHENOR, Mich.

"May I say also that the Palmer seedling No. H6141 was a wonderful spike with me and that I can't understand why it isn't introduced under name."

—HAROLD SANBORN, N. H.

"We had a few of your Palmer seedling No. H6141 and I liked it so much. It is much finer to our way of thinking than Sonatine.

—H. R. HAGER, Iowa.

"You will be interested to know that the bulbs you sent us proved very satisfactory and gave us a splendid variety of blooms. We planted them in early January and had blooms in about six weeks."

—W. E. GREENBAUM, Phillippine Islands.

"The ones I got of you were fine and I want to thank you for the extra ones you sent me. I think the Palmer varieties are beautiful. Every one that saw my glads spoke about the tall spikes. They said they never saw any like them."

—MRS. GEO. KERN, N. Y.

Mywag ★★★ (Dec) Midseason. Light though vivid salmon shading to white throat with a large very brilliant scarlet blotch. Immense round florets somewhat ruffled and prominent midribs. One of the showiest and most beautiful varieties grown. Under good conditions can be grown immense in size. If I could have only 25 varieties Mywag would surely be one of them.

"Want to take this opportunity to say my glads did fine this year in spite of bad weather conditions.

"I have 13 of Palmers' varieties and all were outstanding; sold several dollars worth of cut flowers; couldn't supply the demand. Several people want to buy bulbs in the fall, but raising glads is just a hobby with me and there's none for sale. I'm putting in a good word for you.

"Picardy was outstanding and immense. *Mywag* commanded the attention of everyone that saw it, have to have more bulbs of this variety next year to meet the demand.

"Duna was picked up as fast as it bloomed.—It's great.

"Rapture is my glad,—and every one else's.

"Reverie—The people say "OH" isn't that fine.

"Debonair—Takes the people's eye.

"King Arthur is wanted by all, they come back and ask for more of those ruffled lavender ones.

"Mary Elizabeth and Escort are great sellers.

"Jonquil is a cup of gold.

"All the bulbs I buy from you do good; whether weather conditions are ideal or not. You somehow put the "pep" in them.

"I have a roadside stand and people pass up others, just to get to my glads. (Palmer varieties). Several take four dozen at a time for their table decorations in their homes. I've established a good trade and will have to lay in a big stock of bulbs next year.

"Awaiting next years planting season; my one big joy in life, I am ever,"

—EDWARD C. NORDSIEK, PENN.

Picardy ★★★★★ (Ex) (Com) (85-90) Soft shrimp pink without flecking. A blotch of flesh pink shading to shrimp pink at edges. Soft inconspicuous feathering of rose. Usually 7-8 blooms open but has been grown with 10 or 12 blooms up to 6" or more across. The most outstanding, most beautiful, most popular variety in existence. This variety is so widely grown now that there is not need to say much about it as most everyone knows it. No variety ever produced has been so universally popular as this. If you have never grown Picardy you don't know how beautiful a glad can be. Always brings the highest price on the cut flower markets. Very strong vigorous grower and tremendous propagator. This variety more than any other has waked up the florists and made even them beauty conscious.

"The 5000 Picardy I bought from you were planted Jan. 12 and came up about 100% and have the most even growth of any I have ever planted and my plantings have run into the hundreds of thousands." —L. C. SMITH, Florida.

Pirate ★★★ (Dec) (85-90) Beautiful dark rose red. Somewhat lighter in upper throat. Several immense wide open blooms at a time. An unusual shade but one of the finest dark varieties. If you like the dark ones be sure to try Pirate.

"Another one that I think is neglected in the catalog is Pirate. This is one of the most beautiful dark reds I have seen.

"The Palmer varieties received more attention than the others from visitors. The delicate pastel colors seem to appeal to the women especially. Bagdad, Duna Pirate, Rapture, Reverie and Debonair were the most frequently mentioned. I gave a great many people your address.

"I think one outstanding reason for my success is the fine bulbs you put out.

"Yesterday I received my order from you. It came in excellent order.

"I was amazed at the generous value I received in the 50 cent specials. I figure that I received at least double the catalog value of the bulbs.

"I don't see how you can be so generous with the extras on such a small order as mine was. It is certainly pleasant to deal with you."

—NORMAN W. MASON, N. H.

They are very clean and healthy looking when taken from the packages. You certainly must give your glads good care to raise such strong bulbs. I certainly can't credit much of the success I have enjoyed to my efforts for I give them very ordinary culture. Altho I sprayed during the season I did not dip any bulbs yet I found no thrip in any of the plantings."

—N. W. MASON, N. H.

"Old Pirate certainly stepped out this year and proved to be the favorite among the reds. Had some fine spikes with 8 and 10 open."

—ANDREW ENSMINGER, N. Y.

Premier Henry ★★★ (Dec) (85-90) Geranium pink shading scarlet blotch with darker center. Usually 4-5 immense round heavily ruffled blooms on a straight spike of moderate height. Very heavy substance. Blooms often six inches or more across but being round they look larger. Under ordinary field culture Premier Henry does not grow quite so tall as we would like but it is one of the most beautiful varieties in existence. If I could grow only ten varieties Premier Henry would be one of them. Much lower in price this year. Be sure to try it.

"That Vagabond Prince knocked their eye out and Premier Henry is a swell glad."

—B. F. TOWLE, N. Y.

"You may be interested to know that on 4 different spikes Premier Henry produced florets larger than either Takina or Miss New Zealand. This variety proves that a glad can be both large and beautiful. The imported 'giants' certainly lack this latter quality."

—ANDREW ENSMINGER, N. Y.

Rapture ★★★ (Dec) (Com) (75-80) Medium light salmon with diffused creamy yellow blotch. Very tall strong grower and propagator. Blooms are arranged in a more or less staggered single row with 7 or more large blooms open at a time. This variety is one of the best propagators and most vigorous growers I have ever seen. The cut flower growers are buying this variety more heavily every year. This year with the price down to commercial levels it should be in tremendous demand.

"The 25 Rapture you sent me last season were wonderful. Had spikes 5 ft. tall.

"I think Palmer varieties can't be beat."

—MAURICE BUSH, JR., Pa.

"We join in the praise of Picardy. However in spite of its somewhat smaller blooms, Rapture was slightly taller, statlier and of choicer color. And what a treat to harvest the large bulbs and the many bulblets of these two varieties."

—V. H. WINTER, Nebr.

"Rapture gives every indication of being a cut flower of excellence for this section."

—GUILFORD DAHLIA GARDENS, N. C.

"The Rapture was a special that you sent as extra and created more talk than others that have been grown here."

—JOHN PARKS, S. C.

Recado ★★★ (Ex) (85-90) Rosy ash flecked and splashed toward the edge with orange scarlet. Has a diffused darker blotch. Opens 10 large well placed blooms on a long spike. Very vigorous variety. Fine for exhibition and sure to be popular as a garden flower.

"Please find enclosed check of \$2.85 for which please send me one gallon of maple syrup. If your maple syrup is as fine as your gladiolus bulbs I will be more than pleased.

"I had ordered your special collection for \$3.00. I have never seen such blooms raised anywhere as I cut from my yard. For years I have tried to raise gladiolus and was quite discouraged but have found the secret at last. Your bulbs were truly thrip free."

(NAME LOST)

"Must say your bulbs are the finest of any I have purchased so far and I have purchased from a number of different firms in the past." —FRED BRANDT, Fla.

Regent ★★★ (Ex) (Com) (90) Clear glowing scarlet shading some darker in the throat but without a definite blotch. 9-10 large wide-open well arranged blooms open at a time on a very tall straight spike of 22-24 buds. Often grows 5½ feet tall with an ideal stem. Opens well to the tip and is a good shipper. Good propagator. I consider this the best light red variety I have seen and the only one that can displace Dr. Bennett as a commercial variety. I surely expect Regent to displace Dr. Bennett as it is very much superior in every way. The greatest advance in light reds in many years.

This summer I sent my friend, J. D. Long, several spikes of Regent from the tail end of the blooming of some small bulbs. Forgot about sending some good ones when I had them. These were the best I had at the time. Later he writes: "The blooms of Regent were in fine condition twelve days after you shipped them. The spikes were strong and straight, the blooms ideal as to spacing, facing and the way set on the stem—closely so best for shipping and also will not knock off or blow off in the field or in handling as some otherwise fine kinds do. Color splendid—in fact it would require additional observation to discover room for improvement. I believe this variety is going places." —J. D. LONG.

Reverie ★★★ (Dec) (Com) (90) Light safrano pink shading to cream throat giving the general color effect of clear, clean, light pink and cream. Vigorous healthy plant. 6-8 medium large somewhat ruffled well placed blooms open at a time. A variety for the beauty conscious and yet has color and character enough to suit anyone.

"You will note from this order that I am including 25 Reverie. You sent me two last year and must say that they were the most beautiful things I ever saw. The Mogul and Royal York were also fine. A friend gave me one Champlain and I liked it so well that I am ordering 25 from you." —N. V. KOEL, Minn.

"Of the bulbs I bought from you last spring I believe I got the most pleasure from Reverie. It is a beautiful thing and a strong grower.

"Rapture, Reverie, Symphony, Wasaga and Duna all won ribbons in both the Pennsylvania Show and the NGS Show so you may understand why I hold considerable respect for the team of Palmer and Gove."

—DONN J. CARNEY, Ohio.

Rideau ★½ (Dec) (85-90) Attractive smoky salmon. 6-8 blooms open on a medium height spike. Many people like this variety though it is not quite up to the standard of most of the Palmer varieties.

Rosex ★★★ (Ex) (Com) Light rose flecked with salmon orange. Has an inconspicuous rose blotch. The color is somewhat variable sometimes being darker than other times. Under artificial light appears scarlet and is especially fine. 8-10 or more well placed blooms open on a long flower head. A fine variety that is becoming more popular all the time. This year that the price is down nearer commercial levels I am getting inquiries for it in quantity from the cut flower growers. A very fine variety.

Royal York ★★★ (Dec) (80) Deep scarlet with a hint of salmon. 5-6 very large wide open blooms at a time. Very vigorous strong variety. A fine dark red. One of the parents of Aladdin, this year's introduction, and other fine seedlings to be introduced later.

"Royal York was the most wonderful glad I ever grew, nearly 5 feet in height, the blooms five and seven inches.

"Debonair, Hector and Jonquil were fine." —F. H. BECK, Maine.

"Royal York's first performance with me passed inspection 'ace high' according to the opinion of visitors who saw it and they sure did. A very beautiful glad in color, placement and growing habits with plenty of length of spike."

—P. O. RICHARDSON, Mass.

"The bulbs I bought from you last fall produced marvelous blooms and were the finest I ever had."

—W. R. BREWSTER, Fla.

"The bulbs I got from you year before last were grand. Won blue ribbons on both Picardy and Bagdad. They were very, very beautiful."

—MRS. LOUISE BAKER, Pa.

Sahara ★★★ (Ex) (85-90) Light russet with a soft blotch of cream lightly peppered russet with scarlet penciling. 10 medium size well placed blooms open on a tall always straight spike. An unusual color and fine for exhibition. Should be good in warm climates as it will not wilt in the hottest sun.

Sandra ★★★ (Dec) (Com) Light shrimp pink with a small diffused pinkish amber blotch. Quite similar to Picardy in habit and growth. The color is somewhat lighter but is set off by this little amber blotch. A number of people have written me that they consider it the most beautiful glad they have ever seen.

"Of the glads that bloomed I was especially pleased with Rosex, Bit O'Heaven, Star of Bethlehem, Reverie and Sandra and am looking forward to buying them in quantity."

—MRS. J. A. MARTIN, Wash.

"But the highest honors go to Sandra. Such a glad! It may be shy on qualities that go to make a good commercial (I'm not qualified to judge on that score), but for sheer loveliness, pure esthetic beauty, it ranks far ahead of any glad I've ever seen. Your catalog is far too modest for such a classic. You should have described it as a Grecian vestal lamp with a glowing taper in its throat. Every visitor (and there were quite a number) stopped before this variety to admire it. It was the only variety of my 150 that was not adversely criticised by someone. Two professional florists (strangers who were curious to see a 100% clean stand of glads) 'raved over it'. As a propagator it proved quite prolific."

—ANDREW ENSMINGER, N. Y.

Spray of Gold ★★½ (Dec) (Com) (Prim. Grand) (60-70) Beautiful clear deep yellow somewhat ruffled. 4-5 medium large blooms open. A nice basket glad.

"Spray of Gold was one of the finest glads that we ever had in our garden. The color was a rich gold when it was placed in the sun."

—PHILIP G. FARLEY, Mass.

Symphony ★★★ (Dec) (Com) Light rosy pink with clear cream blotch. 6-8 or more blooms open on a tall straight spike. A flower head approaching Debonair in length. Have had very fine reports on this and many inquiries from the cut flower growers.

"Last spring you sent me 25 Symphonies as a prize award from the 1936 AGS Show. I grew these under three different types of growing conditions and found them to be uniform in every respect. This looks to be a fine commercial glad and a really remarkable propagator."

—DONN T. CARNEY, Ohio.

"I have great confidence in your stock as bulbs received from you have always been above criticism.

"The Symphony and Vagabond Prince last year were wonderful."

—GROVE S. RICH, N. Y.

The Mogul ★★★ (Ex) Salmony maroon with darker lines in the throat. 8-10 very large wide open slightly ruffled blooms open at a time. Most of the buds showing color at the same time. Distinctive and showy.

"The Mogul which you sent was very fine and I hope to be able to secure more of this type."

—DAYTON L. JONES, N. Y.

"To me The Mogul was absolutely the finest thing in the garden last year."

—D. L. BRANIGIN, Mich.

"I wish to thank you for the way you have taken care of my orders. They were prompt and the count was more than I expected. Your judgment in substituting was fine and this isn't saying anything for blooms of the best that I have had when planting bulbs received from you."

—L. P. MARSH, La.

"Again the time has come to express my thanks and appreciation for the healthy, clean bulbs and bulblets purchased from you last season. All were satisfactory in every respect. Some more outstanding than others of course. Had blooms from bulblets of Shirley Temple, Angelus, Beacon, Jalna and others. Every bulblet germinated except one.

"Beacon and Bit O'Heaven produced outstanding spikes. Both are grand varieties. Helena is chockful of individuality, charming in every way. The one bulb produced three large ones, two small and quite a few bulblets.

—ANDREW ENSMINGER, N. Y.

Vagabond Prince ★★☆☆ (Ex) Unusual iridescent garnet brown lighter in upper throat and with a small blotch of glowing flame scarlet on lip petal. 8-10 or more well placed medium large blooms open at a time. Rather odd color but very distinctive and beautiful and entirely unlike anything else. A most gorgeous variety. Though not a so-called commercial color it is one that florists should use to attract attention to their windows and one that every amateur will want in his garden. At present it seems to be about the most popular Palmer variety since the introduction of Picardy. A fine grower and good propagator. One of the "must haves."

"I want to tell you of a very pleasant experience I had this morning making my rounds in the trial patch. I found 7 spikes of Vagabond Prince, 1 spike 52" tall and the shortest 48". The 52" one had 16 buds on spike. Bottom floret open 5" in diameter and the color was gorgeous. These were from the 10 bulblets you sent me last spring. Every one grew and the other 3 may bloom a little later. I never saw a bunch of bulblets coming out so near together." —J. A. FORD, Ga.

"I have never seen two more beautiful glads than Alayne and Vagabond Prince." —T. W. GIBSON, Md.

"I had Vagabond Prince bloom from a bulblet last year and its beauty still haunts me." —H. H. KNIGHT, Iowa.

"Vagabond Prince was wonderful."

—MRS. E. S. FOLSOM, Del.

"Vagabond Prince sure is a beauty."

—J. A. CLARK, Pa.

"I particularly liked Vagabond Prince, Bit O'Heaven, Mary Elizabeth and your 1937 Premium bulb, Helena." —MRS. H. I. SACKETT, N. Y.

"Vagabond Prince is a knockout."

H. JAVUREK, N. Y.

"Last spring I bought of you, 10 bulblets of Vagabond Prince, and thanks to your generous count 12 of them germinated and grew and if they keep on doing as well as they have so far may grow into a No. 3 bulb.

"I am more than pleased with everything I bought of you. You can look for another good sized order next year." —A. J. SEEBACH, Minn.

"I simply raved over your Vagabond Prince." —E. BOTH, So. Australia.

Wasaga ★★★ (Dec) (Com) (90-95) Beautiful clear glowing buff with wide open ruffled blooms. A most chaste and exquisite flower. 4-5 good size blooms open at a time. One of the most beautiful varieties in existence and one that every florist should use. Wasaga used in a floral piece gives it distinction and sets it above other floral pieces made of the common varieties of glads. Not only a magnificent variety in itself but a parent of several very fine Palmer seedlings including Amrita, Barcarole and Amulet.

Palmer Seedlings Under Number

BC25084 ★★½ (Dec) (Com) Very nice orange somewhat along the lines of Bit O'Heaven. Not quite so good as Bit O'Heaven but the price is down to commercial levels so that it can be used for cut flower work. The best thing I know of in its color and at the price.

26121 ★★½ (Dec) (Com) Large salmon with cream yellow throat. 5-6 large wide open blooms on a long spike. Fine variety either for commercial use or the home garden.

"The Palmer seedlings BC25084 and 27271 were especially fine and I thank you for making me acquainted with them." —GEO. E. WEBSTER, S. D.

"The glads I showed from your bulbs last year were a revelation in gladiolus beauty even to the florists."

—C. T. WILHELM, Montana.

"My brief experience with your corms show them much above the level of ordinary glads of commerce."

—L. G. VAIR, N. Y.

"The order from you last year was most satisfactory."

—MRS. P. MCDIARMID, Ala.

27271 ★★★ (Dec) (Com) Huge medium red. 5 or more large massive blooms open on a very tall vigorous plant. Have had very fine reports on this.

"Elegant luck with all the glads and not a bit of thrip this year. Not a better one to suit me than 27271. I had this glad beside Wurtembergia this morning. Both are elegant but 27271 is a foot the longest spike.

"In my order of preference they read 27271, Mrs. T. E. Langford, Maid of Orleans, Debonair, Picardy, Duna, Constancy, Champlain, Wurtembergia, Marmora."

—H. W. LEGGETT, N. Y.

"I want to tell you of No. 27271, that beautiful seedling of Palmers. 6 blooms open in full and fully 6½ and 7 inches across. Only have 1 bulb but it is one of the most gorgeous ones I have ever seen."—MRS. DAVID ADAMS, Searsboro, Ia.

27585 ★★½ (Dec) Salmony smoke or mulberry. Up to 8 medium size ruffled blooms open. Very pretty.

28263 ★★½ (Dec) (Com) Very nice medium shade of red. Several large blooms open on a tall straight spike. One grower said it was the best red he had ever seen. Surely is a nice cut flower variety.

30161 ★★½ (Dec) A seedling of and somewhat similar to Roi Albert. Ruffled and more beautiful than Roi Albert but like the latter inclined to have a short flower head. Think you will like it.

"I would like to thank you for the very liberal amount of extras you sent me this spring, especially Reverie and 30161.

"Perhaps you will be interested to know that 30161 took a blue ribbon as a decorative smoky at the August show of the Schenectady Floricultural Society held yesterday. It bloomed just at the opportune time. Also had firsts or seconds with Duna, Wasaga, Rapture and Debonair. Was sorry to have Reverie and Symphony bloom a little too soon. Both are very beautiful."

—B. S. DAVENPORT, N. Y.

30092 ★★½ (Dec) (Com) Rose salmon with cream throat. A sister seedling of Beacon and somewhat like it but the color is more pink and not quite so vivid. Tall straight spike.

1938 PREMIUM BULBS

30112 (PALMER) (Dec) (Com) Midseason. Bright red. Beautiful color with 6-8 well placed blooms on a moderate height stem. A very nice red that I think you will like.

30114 (PALMER) (Dec) (Com) Early. Bright scarlet with white markings in the lip. 5-6 large blooms open at a time on a moderate height spike. The best early red I know of.

The above two varieties not for sale but a bulb of either one given with a \$15.00 cash order this season.

These seedlings are not being named now but at least one of them will be, possibly both, this next season. Anyone suggesting the name that is finally chosen will be given five bulbs free.

"I was surprised to discover that just six Picardy in a vase will make a beautiful showing. However I like Edith Robson just as well if not a little bit better. Sunshine Girl, Duna, Our Selection, Milford and Mammoth White were magnificent."

—M. G. DEARTH, Penn.

"We were very well satisfied with the glads you sent us. Everybody thought they were wonderful."

—J. G. BURKLEY, Md.

"It might also interest you to know that your seedling 30161 which was included in my order last spring as an extra, did fine here and placed second at the State show in the 901 class, Twentieth Division."

—GLENN ALLEN, Iowa.

New 1938 Introductions

Bernece (GRAY) (Dec)(Com) Very early. Deep golden yellow, sometimes flaked orange around the edge. 5 beautifully ruffled 4 inch or larger flowers open at a time. Medium height. Good propagator. A very fine early decorative that should become a popular commercial with the florists who can appreciate beautiful glads.

PRICE \$1.00 EACH FOR ANY SIZE. NO BULBLETS.

Damaris (BEATRICE L. PALMER) (EX) Midseason. Clear purplish red or reddish purple with 9-10 medium size well placed blooms open with most of the 8-10 remaining buds showing color. Sometimes nearly the whole spike open at once. Tall straight stem.

This is a very outstanding variety. Though they are not so large as some they open so many at a time and have so many showing color that it makes a very impressive sight. The color and type are entirely different from King Lear and Sari, other purples that I am introducing this year. Bound to become very popular.

PRICE \$5.00 EACH FOR ANY SIZE BULB. NO BULBLETS.

Lila (JACK) (EX) (Com) (Albatross x Rita Beck) Late midseason. White, somewhat waved. Cream throat with small delicate lavender feathering. This feathering is not magenta but a real lilac or lavender. This spot is just big enough to set the bloom off in nice shape. Blooms are large and with up to 10 open on a tall straight spike having 20-24 buds. Placement is very good. An average propagator. Unlike many whites, Lila is a strong, healthy grower.

This variety is entirely different from other whites and I believe has a place. It was outstanding in my garden this past season.

PRICE \$2.00 EACH FOR LARGE SIZE ONLY. NO SMALL ONES OR BULBLETS.

Lutex (SUTTLE) (EX) Midseason. Clear medium yellow. From medium to tall. Very large. 8-10 open. 15-20 buds. Here is a yellow variety at last that combines large size, many open and good color, something that everyone has been looking for.

By mistake my trial bulbs of this variety were not planted in my trial garden but were put out in the field with standard varieties so that I did not notice it until it was in full bloom. When I first saw it standing up in the field with 10 immense blooms open at a time it fairly took my breath away. I didn't know where I got this seedling but as soon as I found out I didn't waste any time in getting in touch with the originator and buying it from him.

I do not claim this variety is ideal as I have never seen a glad or anything else yet that didn't have its faults. It sometimes crooks a little and sometimes the flower heads are not so long as we would like, but when it comes right as it usually does it is surely a world beater in yellows. It is worth the price to any hybridizer.

About the occasional crooking, this past year another very fine yellow, one of the best on the market that has always been straight before, crooked somewhat with me as did some other very fine varieties.

PRICE \$10.00 EACH FOR ANY SIZE BULBS. NO BULBLETS.

"The bulbs you sent me were fine and gave me splendid spikes of blooms, the envy of many of my friends. Your count was a surprise too."

—MRS. H. D. LEITCH, Canada.



King Lear



Carillon



Star of Bethlehem



Helena

"The glad bulbs I ordered in spring turned out fine. Especially Picardy and Maid of Orleans. And I only had size 3 or 4 bulbs." —MARIE SCHMITZ, Wisc.

"My glads are blooming now and certainly are beautiful."

—MRS. B. F. GUDGE, Ill.

Mauvette (GRAY) (EX) (Com) Midseason. Beautiful clear pinky lavender with a clear cream throat which has a touch of yellow in it, this color extending on to the midribs. Up to 9 well placed blooms open on a spike of 17-20 buds. Blooms medium size or larger but with so many open that it makes a fine spike. To me this is about the most beautiful lavender I have seen. I am sure it will become a very popular variety both for exhibition and as a cut flower and for the home garden.

PRICE \$10.00 EACH FOR ANY SIZE BULB. NO BULBLETS.

Susan (WEBSTER) (Dec) Early. A very pretty smoky sometimes flaked darker smoke around the edge. Red feather on yellow throat. Somewhat ruffled and fluted. Tall straight spike with 6-7 five inch blooms open.

PRICE 50 CENTS EACH FOR ANY SIZE BULB.

Timbuctoo (ZIMMER) (EX) (Com) Midseason. Beautiful deep red, sometimes flaked darker, opening 6-8 with 6 more showing color on a nice long spike of 16-18 buds. Better than medium height. Very healthy.

This is a very beautiful deep red that I believe will be grown years after some of the other fine dark reds on the market are forgotten. I first saw this variety in Mr. Zimmer's exhibit at South Bend two years ago where it was the outstanding seedling in the exhibit. I immediately made arrangements for trial of the variety in my own garden and then bought the stock.

It is a fine forcer in the greenhouse, having had it in my greenhouse last spring over six feet tall with simply magnificent spikes of bloom with 8 open. Of course outdoors it does not grow so tall. Mr. Palmer thinks very much of this variety having used it in his hybridizing operations.

PRICE \$10.00 EACH FOR ANY SIZE BULB. NO BULBLETS.

Token (CROW-PAPPAS) (Dec) (Com) (70) Originally called Miss Claremont. Here is a variety that you are all going to hear a lot more about in years to come as it is an ideal commercial. The color Mr. Pappas calls peach red but to me seems more like a flame salmon with a very beautiful clear deep golden yellow throat. The color value of this variety is very high. It was named Token because of its more or less similar color to the Rose Token. It opens 5-6 4½" well placed blooms on a tall, straight, slender but stiff spike having a total of 16-20 buds.

When I first saw this variety in Mr. Pappas' trial garden I didn't know what it was but immediately recognized it as something outstanding. All the cut flower growers have been looking for a variety that was early but yet as good as the late varieties. Most of the early varieties have not been a very good color but Token is all that anyone could ask for as to color and comes in at least two weeks before Picardy and most of the crop can be cut off before Picardy blooms. There are a lot of good commercial varieties but many of them are more or less similar in color. Token however strikes an entirely new note in color. A color that immediately stands out and will be very popular with everyone.

Mr. Pappas, Sr. has been in the cut flower business in New York for about forty-five years and knows flowers and glads. He says that he will stake his reputation on this being a second Picardy as a moneymaker. Messrs. Pappas originally intended to keep this for their own cut flower business but found that it propagated so fast that they would soon have more than they would need and decided to introduce it. And they have appointed me sole selling agent.

The Pappas Trial Grounds are conducted in the following way. Varieties are rated in the garden and then at the wholesale house in New York and then also by some of the leading retailers in New York. A variety which gets an average

"I ordered your \$3.00 mixture and they are doing fine."

—CHAS. LINCH, N. Y.

"I got bulbs from four states this year and yours are there with the best of them."
—ALFRED SMITH, Mass.

rating of 70 as a commercial from the three places is considered very good. Token rated 85 so you can see that it is something unusual. This is a variety that every cut flower grower in the country will grow sooner or later and the sooner he gets into it the more money he will make on it. If I had gotten hold of this variety earlier I would have sold it for at least \$10.00 a bulb but as long as there is a fair stock of it now we are putting it out at the very low price of 25 cents each or \$2.00 per 10 for large bulbs. No bulblets this year. Growers may not be afraid to stock up with this variety because of the price as the price will be reduced gradually for the next few years.

Don't forget that this is a real honest-to-goodness beautiful and unusual early variety that keeps well and ships well and we believe that it is a very good forcer. We are trying it this winter as a forcer in various places and shall know more about that in the spring but we haven't any doubt at all but that it will be very valuable as a greenhouse forcing variety. Don't fail to try it this year. Next year you will want more.

25 CENTS EACH. 10 FOR \$2.00.

REGULAR LIST

The letters following each variety is the abbreviation of the name of the originator: (K) KUNDERD; (PF) PFITZER; (HORN) HORNBERGER; (D) DIENER; (SAL) SALBACH. I am marking the varieties (Com) COMMERCIAL; (Ex) EXHIBITION; (Dec) DECORATIVE. Where I have put down a variety as commercial I mean that the color is such that the florists can use it. But it is not necessarily a good variety for shipment to large wholesale markets. Such varieties as are real commercial varieties I have noted in the text.

I am giving the blooming dates as near as I can on all the varieties I know but these blooming dates are not necessarily strictly accurate as they vary according to weather, climate, locality, etc. and often with the season. If the blooming dates are not given you may rely upon them being midseason. So please do not write me for any further dates than as given here.

In describing the varieties in this catalog I have given them credit for getting at least fair culture. I have never found any kind of plant that would grow in a concrete road and glads are no exception.

Acadia Palmer strain. See page 13.

Aflame ★★★★★ (HORN) (Ex) (Com) (80-85) Huge begonia rose with 6-8 blooms open. A popular old variety. Good for exhibition, the home garden or local florist use. Not a good shipper.

Aladdin Palmer strain. See page 12.

Alayne ★★½ (KINYON) (Dec) (Com) (Midseason) Beautiful new and distinct shade of light rose. 5-7 medium size blooms open on a medium height straight stem. Petals somewhat ruffled and rolled back. A very beautiful variety for commercial use or for the home garden. No other glad of just this shade. Just the kind of a flower that the florists should use to give distinction to their shops.

"I showed the Alayne to our leading florist and he says there cannot be any question about its commercial future. It is bound to be a florists' favorite."

—F. B. CHASE, N. H.

"The most popular in my garden last year were Coronation, Duna, Edith Robson, Yvonne, Mary Elizabeth and Schwaben Girl."

—WILLARD COFFINBARGER, W. Va.

Gladiolus Price List

WINTER 1938



This List Supersedes All Previous Lists

Do not use an old list. There are many changes in this one.

Where prices have been raised orders will not be accepted at the old price.

Please read pages 2 and 3 before making out order.

Champlain View Gardens

ELMER GOVE

BURLINGTON, VT.

PLEASE READ CAREFULLY

Do not change collections or special sets. The collections are made up as they are for definite reasons and we cannot change them. Any of these collections or specials are very good value.

Do not split quantities as listed. Where a variety is listed at 2 for 15 cents or 4 for 15 cents do not order 1 or 2 at a lower price. There is no profit in any items of less than ten cents and very little at that price. **No single item accepted for less than ten cents.**

EXTRAS ON CASH ORDERS. On cash orders of \$2.00 to \$5.00 you can select 10% extra in bulbs of your own choosing. From \$5.00 to \$25.00 select 15%; \$25.00 to \$50.00 select 20% and above \$50.00 select 25%. **These Discounts do not Apply to Collections, Special Offers or Wholesale prices or New Introductions. See next page.**

TO MAKE OUT YOUR ORDER put everything down on the order blank, just as listed in the price list. Add it up, then figure out any special discounts or add on the extra bulbs of your choosing. It is all very simple but some people seem to have a lot of trouble in making out an order.

On all orders of \$15.00 or more I will put in a bulb of one of the premium bulbs listed on next page, **Palmer Seedling No. 30112 or Palmer Seedling No. 30114.**

On orders of \$30.00 or more I will put in a free bulb of **Sari** listed on next page.

The above discounts and extras are all for cash orders. The earlier the orders are received and the larger they are the more generous we will be with our extras. If you cannot spare all the cash now send 25% and the balance later and we will see that you are satisfied. **But the above extras are only for cash before shipment.**

On cash orders of \$12.00 or more, except collections, I will give a copy of the "Gladiolus Book" by Rockwell if you ask for it and if you have not already had one.

Packages of bulblets run from twenty-five to fifty or more. We give very good value.

You can have 3 bulbs at the 10 rate; 25 at the 100 rate. But no single items for less than 10 cents.

Please do not send us orders of under \$1.00 as we lose money on them. I do usually fill such orders from regular customers as an accommodation but they cost us more than we get for them.

I GUARANTEE SATISFACTION, and I mean just that. If at any time, either after receiving the bulbs or after blooming, you have cause for complaint just write me about it and I will do my utmost to make things right. This is the only basis on which anyone can hope to conduct a business that will be permanently successful.

At these prices all bulbs, except the wholesale offers, are prepaid anywhere in the United States and Canada and all countries in the Postal Union.

SPECIAL QUOTATIONS. Do not ask for special quotations unless you have a large order. We will not consider quoting any special prices on small orders. I publish this price list to give people the prices and do not consider it honest to give one person a lower price than another.

REMEMBER in buying bulbs price is not everything. In fact sometimes the price is a minor item. Consider the quality, count, the reliability of the grower, etc. I always mean to put in enough extra count or over size to make up for any lower price that other good reliable growers might make. **Just leave it to me.**

IF YOU WANT TO PAY TRANSPORTATION and get extra count on your order just mention it and I will send your order collect for postage or express and will see that you are more than satisfied. Just mention whether you want extra count on your order or extras in other kinds and what kinds. If you want bulbs sent by mail it is better to let us send them **C.O.D. for the postage**, then we know the postage is correct and I will give you more than enough bulbs to make it up. People who send stamps or cash for the postage seldom send enough. Besides when the customer sends money for us to pay the postage or express it makes us a lot of extra work and disrupts the whole office routine.

ON FAIR SIZED ORDERS, EXPRESS is safest and best especially in the winter time; I advise express if you are situated so as to get free delivery by the express company.

EXTRAS. It is the practice of most growers to give extras on orders. I always put in some myself. So it would help me if you will mention whether you want extras of the same varieties that you order or in other kinds. And if you have a preference it will help me still more if you can name the varieties in which you want your extras and if you want large, medium or small bulbs or bulblets. Just give us a list of varieties from which to select your extras. We will put in what we think the order rates.

Please give me a list from which to select your extras. Extras are given for orders from the retail list—not from the wholesale tho I usually put in something new to try anyway.

Premium Bulbs Free

SARI. PALMER SEEDLING No. 30151. Clear rhodamine purple. A very beautiful color. Very early. 5-6 open. Medium size. A good one. A bulb of **Sari** given with an order of **\$30.00 or more.**

30114. PALMER SEEDLING. A very early brilliant red with white line on lip. Large size. 5-6 open. The best early red I know of.

30112. PALMER SEEDLING. A sister seedling of the above. A beautiful bright red opening 6-8 fine well placed blooms at a time. A fine variety

With a **\$15.00 order** I will give a bulb of either one of the above seedlings and this fall the one that has the most good reports on it **will be named.** Perhaps both will be named as they both are certainly worthy of names. **If anyone who receives one of the bulbs suggests a name that is finally given it, I will give that person five bulbs of the variety.**

HELENA. If you prefer a bulb of **Helena** to any of the above varieties as extras I will put it in. I consider **Helena** one of the very finest varieties.

WHEN CORRESPONDING ABOUT A PREVIOUS ORDER, PLEASE GIVE ORDER NUMBER. IT SAVES US A LOT OF TIME.

EARLY ORDERING IS URGED. Some items listed in this list will be sold out before Spring. Every year people postpone their orders until some of the things they want are gone. From inquiries that are coming in it looks as if business this year would be the best ever.

PRICE LIST

	PER	LARGE	MEDIUM	SMALL	BULBULETS PER	
ACADIA	1	2-.12	4-.15	10-.15
Geranium pink.						
AFLAME		2-.12	3-.15
Huge begonia rose.	10	.50	.30
ALADDIN		\$10.00 each any size.				
New ruffled salmon.						
ALAYNE	1	.75	.50	.30	6	.25
New beautiful rose.	10	6.00	4.00	2.40	10	.35
ALBATROSS		2-.12	4-.15	10-.15	25	.10
Large pure white.	10	.50	.30	.15
ALCHEMIST		Sold out				
Large early yellow.						
ALLEGRO	1	.60	.40	.25
New light blue.						
ALLEMANIA	1	.50	.30	.20	4	.20
New red.						
AL SMITH		2-.12	4-.15	10-.15	Pa.	.10
Very early pink.	10	.50	.30	.15
AMADOR		2-.14	2-.10	10-.20	Pa.	.15
Large glowing red.	10	.60	.40	.20
AMBERGLOW	1	1.50	1.00	.60	6	.25
New amber yellow.	10	12.00	8.00	5.00	10	.35
AMRITA	1	4.00	3.00	2.00	1	.50
New clear buff.	10	32.00	24.00	16.00	10	4.00
AMULET		\$10 each any size.				
New ruffled buff.						
ANGELUS	1	3.00	2.00	1.25	1	.40
Pure pink. cream blotch.	10	24.00	16.00	10.00	10	2.50
APRICOT GLOW		2-.12	3-.10	10-.15	Pa.	.10
Early Apricot.	10	.50	.25	.15
AVE MARIA		2-.12	4-.15	10-.15	Pa.	.10
Tall medium blue, fine.	10	.50	.30	.15
AWATEA	1	4.00	2.80	1.50	1-40	
Peach pink.						

"My bulblet of Shirley Temple purchased from you last spring did wonders. Made a jumbo sized bulb and 90 bulblets.

"Rewi Fallu did almost as well. Didn't allow them to bloom."

—LADDIE J. MITISKA, Ohio.

	PER	LARGE	MEDIUM	SMALL	BULBETS PER	
BAGDAD		2-.12	4-.15	10-.15	Pa.	.10
Huge smoky old rose.	10	.50	.30	.15
BARCAROLE	1	4.00	3.00	2.00	1	.50
New clear orange.	10	32.00	24.00	16.00	10	4.00
BEACON	1	.65	.40	.25	6	.25
Salmon with large cream blotch.	10	5.00	3.00	2.00	100	3.00
BEAUTIFUL OHIO	1	1.60	1.00	.60	1	.20
New Deep lavender.	10	12.80	8.00	5.00	10	1.60
BELLA DONNA		2-.12	4-.15	10-.15	Pa.	.10
New early light blue.	10	.50	.30	.15
BENEDICT	1	.15	.10	2-.15	Pa.	.15
Rich deep rose.	10	1.20	.80	.60
BEOWULF	1	4.00	2.50	1.00	1-.40	
Late lavender.						
BERNECE		\$1 each any size.				
Early deep yellow.						
BERTY SNOW		2-.12	4-.15	10-.15	Pa.	.10
Exhibition and commercial lavender.	10	.50	.30	.15
BETSY BOB-UP	1	.10	2-.15	2-.10	15	.10
Creamy yellow sport of Betty Nuthall.	10	.80	.60	.40
BETTY HUMPHRIES	1	2.00	1.25
Glorified Betty Nuthall.						
BETTY NUTHALL		2-.12	4-.15	10-.15	Pa.	.10
Salmon, orange throat. Fine commercial.	10	.50	.30	.15
BILL SOWDEN		2-.12	4-.15	10-.15	Pa.	.10
Large deep blood red.	10	.50	.30	.15
BIT O'HEAVEN	1	.40	.25	.15
Exhibition orange.	10	3.20	2.00	1.20
BLACK OPAL	1	4.50	3.50
New exhibition dark red.						
BLEEDING HEART		2-.12	4-.15	10-.15	Pa.	.10
White tinted pink, big red blotch.	10	.50	.30	.15
BLUE ADMIRAL	1	.15	.10	2-.15	12	.15
Tall dark blue. New.	10	1.20	.80	.60	100	.75
BLUE BEAUTY OR BLUE SCHONHEIT	1	1.00	.60	.40	2	.20
New blue.						
BLUE DANUBE		2-.12	4-.15	10-.15	Pa.	.10
Strong growing light blue.	10	.50	.30	.15
BLUE WONDER	1	4.00	2.50
Exhibition blue.						
BLUSHES OF CREAM		2-.12	4-.15	10-.15	Pa.	.10
Cream pink.	10	.50	.30	.15
BRIGHTSIDE		2-.15	2-.10	10-.25	Pa.	.15
Orange and yellow.	10	.60	.35	.25
CAESAR	1	.10	2-.15	2-.10	15	.15
Salmon red with blotch.	10	.80	.60	.40
CAMELLIA	1	4.00	3.00	2.00	1	.50
New tinted.	10	32.00	24.00	16.00	10	4.00
CARDINAL PRINCE		2-.12	4-.15	Pa.	.10
Cardinal red.	10	.50	.30
CARILLON		\$10 each any size.				
New rose, white throat.						
CHAMPLAIN	1	.10	2-.15	2-.10	15	.10
Very early light blue. Healthy. A coming commercial.	10	.80	.60	.40	100	.50
CHAS. DICKENS		2-.12	4-.15	10-.15	Pa.	.10
Best low priced clear purple.	10	.50	.30	.15
CHEROKEE	1	.60	.40	.25	4	.25
Very early large blotched pink.	10	5.00	3.00	2.00	10	.50

"Last year I got your No. 1A collection for my son. It sure was a wonderful collection."
—P. BLEWETT, Pa.

"The big box of glads arrived by express November 20. The prettiest and cleanest bulbs I have ever seen."
—MRS. ROSE HUGHES, Texas.

	PER	LARGE	MEDIUM	SMALL	BULBLETS PER	
CLARION		2-.15	2-.10	3-.10	15	.10
Very early yellow. Good.	10	.60	.40	.25
COLOSSUS	1	3.00	2.00	1.00		1-30
Huge early light pink.						
COM. KOEHL		2-.14	4-.15	10-.15	Pa.	.10
Very large deep blood red.	10	.60	.30	.15
CONQUEST	1	1.50	1.00	.50	1	.15
CONSTANCY		2-.12	4-.15	10-.15	Pa.	.10
Lavender rose.	10	.50	.30	.15
COQUETTE	1	.10	2-.15	2-.10	15	.10
Rose salmon with cream blotch.	10	.80	.60	.40
CORONATION		2-.14	4-.15	10-.15	Pa.	.10
Beautiful salmon, cream throat.	10	.60	.30	.15
DAMARIS		\$5 each any size.				
New purple.						
DEBONAIR		2-.12	4-.15	10-.15	Pa.	.10
LaFrance pink, cream throat. Very tall and straight.	10	.50	.30	.15
DR. DURR		2-.12	4-.15	10-.15	Pa.	.10
Large white, cream throat. Early.	10	.50	.30	.15
DR. F. E. BENNETT		2-.12	4-.15	10-.15	Pa.	.10
Most popular light scarlet.	10	.50	.30	.15
DREAM O'BEAUTY		2-.12	4-.15	10-.15	Pa.	.10
Deep rose.	10	.50	.30	.15
DR. HOEG	1	.20	.15	.10	10	.10
Dark red.	10	1.60	1.20	.80	100	.60
DR. MOODY		2-.12	4-.15	Pa.	.10
Early large lavender.	10	.50	.30
DUNA		2-.12	4-.15	10-.15	Pa.	.10
Beautiful soft light pinky buff.	10	.50	.30	.15
EARLY DAWN		2-.12	4-.15	10-.15	Pa.	.10
New tall early rose.	10	.50	.30	.15
EARLY MELODY		2-.12	4-.15	10-.15	Pa.	.10
Light lavender pink. Strong grower.	10	.50	.30	.15
EARLY PEACH	1	.15	.10	2-.15	15	.10
Early peach red or light rose.	10	1.20	.80	.60	100	.50
EARLY ROSE	1	.15
Early commercial rose.	10	1.00
ECSTASY		2-.12	4-.15	10-.15	Pa.	.10
Deep red, large blotches.	10	.50	.30	.15
EDITH MASON		2-.12	4-.15	10-.15	Pa.	.10
Light pink.	10	.50	.30	.15
EDITH ROBSON		2-.12	4-.15	10-.15	Pa.	.10
Salmon, red blotch. Very tall and strong.	10	.50	.30	.15
ELLA MAY	1	.20
Small pink decorative.	10	1.60
ELOISE	1	.60
Late lavender commercial.	10	4.80
EMILE AUBRUN		2-.12	4-.15
Smoky bronze, large red blotch.	10	.50	.30
ESCORT	1	.15	2-.15	2-.10	15	.10
New early white.	10	1.20	.60	.40	100	.50
EUIDES	1	.50	.30	10	.75
Exhibition white tinted pink.	10	4.00	2.40
EVENSONG		2-.12	4-.15	10-.15	Pa.	.10
Smoky, cream blotch.	10	.50	.30	.15
EXCELLENCE		2-.12	4-.15	10-.15	Pa.	.10
Large very early scarlet.	10	.50	.30	.15

"I purchased from you last summer the No. 3 collections DeLuxe. I was never more pleased with glads before in all my life. They sure were beauties.

"I had been bothered a great deal with thrip other years but last year I sent for Rototox. I used it as a spray during the growing season and must say every bulb was a spike, no thrip visible. It works well on roses, in fact everything in the garden. I find it is the best spray on the market. I have tried many others and most of them were failures."

—EDW. KOLAR, Ill.

	PER	LARGE	MEDIUM	SMALL	BULBETS	
					PER	
FLAMING METEOR	1	.10	2-.15	2-.10	15	.10
Tall light red.	10	.80	.50	.30	100	.50
FRANK J. McCOY	1	.10	2-.15	2-.10	15	.10
Wonderful exhibition pink.	10	.80	.60	.40
FRASCATI	1	2.50	1.75	1.25	1-.25	
Light rose red.						
GATE OF HEAVEN	1	.10	2-.15	2-.10	15	.10
Fine ruffled rich yellow.	10	.80	.60	.40
GERTRUDE SWENSON	1	.35	.25
Exhibition lavender.						
GIANT NYMPH		2-.12	4-.15	Pa.	.10
Good commercial pink.	10	.50	.30
GLADYS CLEGG	1	.25	.15	.10	10	.20
Early salmon with blotch.	10	2.00	1.20	.80
GLORIANA		2-.12	4-.15	Pa.	.10
Golden salmon, yellow throat.	10	.50	.30
GOLDEN BROWN		2-.12	4-.15	10-.15	Pa.	.10
The name describes it. Very distinct.	10	.50	.30	.15
GOLDEN CUP		2-.12	4-.15	10-.15	Pa.	.10
Large clear deep yellow.	10	.50	.30	.15
GOLDEN FLAME	1	.10	2-.15	2-.10	15	.10
Dark salmon, yellow throat.	10	.80	.50	.30
GOLDEN GODDESS	1	.35	.35
Exhibition yellow.	10	3.00	3.00
GREEN LIGHT	175
Pretty greenish white.						
HARVEST MOON	1	1.00
Large yellow.	10	8.00
HECTOR	1	.25	.15	.10	15	.25
Ruffled scarlet with blotch.	10	2.00	1.20	.80	100	1.50
HELENA	1	5.00	3.00	2.00	1	.50
Late exhibition commercial lavender.	10	40.00	24.00	16.00	10	4.00
HELEN WILLS	3-.10	10-.15	Pa.	.10
Cream white.	1025	.15
HERCULES	1	.30	.20	.10	10	.15
Large buff.	10	1.60	1.20	.80	100	1.00
HERITAGE	1	.25	.15	.10	15	.10
Exhibition pink.	10	1.60	1.20	.80
HILLBILLY	1	.10	2-.15	2-.10	15	.10
Rose-doree, purple, yellow, red.	10	.80	.60	.40
HONOR	1	.40	.25	.15	10	.25
New large lavender.	10	3.20	2.00	1.20	100	2.00
INCENSE	1	1.25
The fragrant glad.						
INNOVATION	1	.20	.15	.10	10	.15
The nearest to bronze.	10	1.60	1.20	.80
INSPIRATION		2-.12	4-.15	10-.15	Pa.	.10
Ruffled salmon.	10	.50	.30	.15
IRAK	1	.50	.50
Beautiful clear gray.						
JALNA	1	1.50	1.00	.60	6	.25
Huge smoky and salmon.	10	12.00	8.00	4.80	100	3.00
JONQUIL	1	.25	.15	.10	15	.25
New deepest yellow known.	10	2.00	1.20	.80	100	1.25

"Have been entirely satisfied with bulbs received from you." —ERWIN A. GIBSON, Conn.

"I have your letter on Vagabond Prince. I bought this from you the first year and feel that I got more for that \$10.00 than any I ever spent on one bulb. I'm unable to decide definitely whether this or Picardy is Palmer's finest. Vagabond Prince seems to be more attractive each year. It certainly has color." —JOHN BRAUER, N. Y.

"Uncas did well from the small bulb. We like it very much. The color is grand, looked very promising to us." —H. E. SEALE, Canada.

	PER	LARGE	MEDIUM	SMALL	BULBLETS PER
J. S. BACH	1	.20	.15	.10
Exhibition.	10	1.60	1.20	10-.15
KING ARTHUR		2-.14	4-.15	5-.10	Pa. .15
Very large rosy lavender.	10	.60	.30	.18	100 .25
KING LEAR		\$10 each any size.			
New giant purple.					
LADY EATON	1	.40	.30	.20	10 .25
Large light pink, white throat.	10	3.00	2.40	1.60
LADY WINSOME	1	.20	.15	.10
Very large rosy salmon.	10	1.60	1.20	.80
LA FIESTA	1	.50	.35	25 .50
Fine new orange.	10	3.50	2.40	100 1.50
LA PALOMA		2-.12	4-.15	Pa. .10
Early orange.	10	.50	.30
LAVENDER QUEEN	1	1.00	.75	.50	1-.10
Fine lavender.	10	8.00	6.00	4.00	10-.80
LAVINIA	1	.40	.30	10 .30
Medium rose.	10	3.20	2.40	100 2.00
LEAH ANN	1	1.50	1.25	1.00	2-.25
New brilliant purple.					
LEANDER	1	.10	2-.15	2-.10	Pa. .15
Orange salmon, magenta blotch.	10	.80	.50	.30
LESCHI	1	.25
Dark velvety red.	10	2.00
LILA	1	2.00
New white.					
LONDONDERRY	1	.35	.20	.10	5 .20
Large smoky orange.					
LOTUS		2-.12	4-.15	10-.15	Pa. .10
Cream pink.	10	.50	.30	.15
LOYALTY		2-.12	4-.15	10-.15	Pa. .10
Fine deep yellow.	10	.50	.30	.15
LUCIFER		2-.15	2-.10	3-.10	Pa. .10
Exhibition orange, dark blotch.	10	.60	.40	.25
LUTEX	1	10.00	10.00
New exhibition yellow.					
MAGNA BLANCA		2-.12	4-.15	10-.15	Pa. .10
Very tall white, cream throat.	10	.50	.30	.15
MAID OF ORLEANS		2-.12	4-.15	10-.15	Pa. .10
The coming commercial white.	10	.50	.30	.15
MAJOR EDWARD BOWES	1	1.00	.60	.40	1-.10
Bittersweet pink.					
MAMMOTH WHITE		2-.12	4-.15	10-.15	Pa. .10
Huge white. Very popular.	10	.50	.30	.15
MARGARET BEATON	1	4.00	3.00	2.00	1 .50
New white, small orange scarlet blotch.					
MARGARET FULTON		2-.12	4-.15	10-.15	Pa. .10
Beautiful clear rose salmon.	10	.50	.30	.15
MARGARET PETER		2-.12	4-.15	10-.15	Pa. .10
Early white, red blotch.	10	.50	.30	.15
MARMORA		2-.12	4-.15	Pa. .10
Large gray, purple blotch.	10	.50	.30
MARY ANSTEEN	1	.50	.35	.20	5 .30
Rose salmon, dark blotch. Early.					
MARY ELIZABETH		2-.12	4-.15	10-.15	Pa. .10
Ruffled white, cream throat.	10	.50	.30	.15
MARY FREY	4-.15	10-.15	Pa. .10
Nice early lavender.	1030	.15

"I am more than pleased the way you have treated me as a customer and again may I thank you. It will be one thing to remember whenever I need glad bulbs."

—J. T. ECCLESTON, Ohio.

	PER	LARGE	MEDIUM	SMALL	BULBLETS PER	
MARY ROSE Rose.	1	.25	.15	10.-20	
MAUNGA Large white.	1	.40	.30	.20	4	.25
MAUVE MAGIC Nice mauve shade.	10	2-.12 .50	3-.10 .25	10-.15 .15	Pa.	.10
MAUVETTE New lavender.		\$10 each any size.				
MAX REGER One of the best blues.	1	.25	.15	.10	10	.20
MAYTIME Early light pink.	10	2-.15 .60	2-.10 .40	3-.10 .25	15-.10 100-.50	
MILDRED LOUISE Strawberry pink.	10	2-.12 .50	4-.15 .30	10-.15 .15	Pa.	.10
MILFORD New exhibition light blue.	1 10	.25 2.00	.15 1.00	.10 .70	8 100	.15 1.50
MINUET Very fine lavender.	10	2-.12 .50	4-.15 .30	10-.15 .15	Pa.	.10
MISS ALAMEDA Commercial light pink with small blotch.	10	2-.15 .60	2-.10 .40
MISS BLOOMINGTON Earliest good yellow.	10	2-.12 .50	4-.15 .30	10-.15 .10	Pa.	.10
MISS GREELEY Very like W. H. Phipps but three weeks earlier.	10	2-.12 .50	3-.10 .25	10-.15 .15	Pa.	.10
MISS NEW ZEALAND Immense pink.	1 10	.50 4.00	.35 2.80	.25 2.00	6 100	.30 4.00
MOORISH KING Deep red	1 10	.20 2.00	.15 1.20
MOROCCO Deep red, fine.	10	2-.12 .50	4-.15 .30	10-.15 .15	Pa.	.10
MOTHER MACHREE Smoky lavender tinged salmon.	10	2-.12 .50	4-.15 .30	10-.15 .15	Pa.	.10
MRS. C. P. WORLEY Strong growing salmon.	1	1.00	.60	.35
MRS. E. J. HEATON Salmon, creamy blotch.	1 10	.10 .80	2-.15 .60	2-.10 .40	20 100	.15 .60
MRS. G. WADE Yellow, many open.	1	.25	.15	.10	10	.25
MRS. LEON DOUGLAS Large salmon.	10	2-.12 .50	4-.15 .30	Pa.	.10
MRS. S. A. ERREY Large exhibition orange.	10	2-.12 .50	4-.15 .30	10-.15 .15	Pa.	.15
MRS. T. E. LANGFORD Peaches and cream.	10	2-.15 .60	2-.10 .40	3-.10 .25
MYWAG Wonder blotched salmon.	1 10	1.50 12.00	1.00 8.00	.60 5.00	3 100	.25 7.00
NADIA New salmon and yellow, small decorative.	1	2.00	1.50	1.00	1	.25
NANCY ANN Pale lavender pink, commercial.	1 10	1.00 8.00	.50 4.00	.25 2.00
NETHERLAND PRINCE Giant salmon pink. Good.	10	2-.15 .60	2-.10 .40	3-.10 .25	15 100	.10 .40
NEW ERA New ruffled pink.	1	4.00	3.00	2.00	1	.25
NINTH SYMPHONY Large clear salmon.	1	.5020	10	2.00
NYORA Exhibition salmon, dark blotch.	10	2-.12 .50	4-.15 .30	10-.15 .15	Pa.	.10
ODALISQUE White scarlet blotch.	1 10	.10 .80	2-.15 .60	2-.10 .40	5 100	.15 2.00
OLIVE MARIE BROWN Very pretty small orange.	1	.25	.15

	PER	LARGE	MEDIUM	SMALL	BULBLETS	
					PER	
ORANGE BUTTERFLY		2-.12	4-.15	10-.15	Pa.	.10
Small flowered orange.	10	.50	.30	.15
ORANGE PRINCESS		2-.15	2-.10	3-.10	15	.10
Salmon orange.	10	.60	.40	.25
ORANGE SOVEREIGN	1	.10	2-.15	2-.10	15	.10
Fine orange.	10	.70	.40	.30	100	.50
OUR SELECTION	4-.15	10-.15	Pa.	.10
Exhibition salmon flaked darker.	1030	.15
PARADISE	1	.15	.10	2-.10	15	.10
Large ruffled apricot.	10	1.20	.80	.40	100	.50
PEERLESS PINK	1	.10	2-.15	2-.10	10	.10
Rose pink with darker blotch.	10	.80	.60	.40
PELEGRINA		2-.12	4-.15	10-.15	Pa.	.10
Best deep blue.	10	.50	.30	.15
PFITZER'S TRIUMPH		2-.12	4-.15	10-.15	Pa.	.10
Salmon scarlet.	10	.50	.30	.15
PHYLLIS McQUISTON	1	.10	2-.15	2-.10	25	.10
Beautiful light rose.	10	.80	.50	.30	100	.30
PICARDY		2-.12	4-.15	10-.15	Pa.	.10
Sensational new salmon.	10	.50	.30	.15
PINNACLE		2-.12	4-.15	10-.15	Pa.	.10
Tall exhibition rose pink.	10	.50	.30	.15
PIRATE		2-.12	4-.15	10-.15	Pa.	.10
Fine deep purplish rose red.	10	.50	.30	.15
POLAR ICE		2-.14	2-.10	5-.15	25	.10
Tall straight white, several open. Early.	10	.60	.40	.25
PRAIRIE GOLD	1	.65	.40	.25	1	.10
Tall, dark yellow.	10	5.20	3.20	2.00	10	.70
PREMIER HENRY	1	.15	.10	2-.15	15	.10
Immense ruffled geranium pink.	10	1.20	.80	.50	100	.60
PRIMROSE PRINCESS		2-.12	4-.15	Pa.	.10
Large light yellow.	10	.50	.30
PROF. VAN SLOGTEREN		2-.12	3-.10	10-.15	Pa.	.10
Beautiful soft pink.	10	.50	.25	.15
QUEEN HELEN II		2-.12	3-.10	10-.15	Pa.	.10
Bright pink, yellow blotch.	10	.50	.25	.15
RAPTURE		2-.12	3-.10	10-.15	Pa.	.10
Tall late salmon, creamy blotch.	10	.50	.25	.15
RECADO	1	4.00	3.00	2.00	1	.50
New smoky.	10	32.00	24.00	16.00	10	4.00
RECOVERY	1	.10	2-.15	2-.10	15	.10
Dark rose	10	.80	.60	.40
RED LORY		2-.12	4-.15	10-.15	Pa.	.10
Exhibition red, purplish blotch.	10	.50	.30	.15
RED PHIPPS		2-.12	4-.15	10-.15	Pa.	.10
Light red. Similar to Phipps in growth.	10	.50	.30	.15
REGENT	1	2.00	1.50	1.00	2	.25
Fine new scarlet. Will replace Bennett	10	16.00	12.00	8.00	10	1.00
REVERIE		2-.15	2-.10	3-.10	15	.10
Light pink and cream.	10	.60	.40	.25	100	.50
REWI FALLU	1	3.00	2.00	1.00	1	.25
New giant dark red.	10	24.00	16.00	8.00	5	1.00
RIDEAU		2-.12	4-.15	Pa.	.10
Smoky salmon. Several open.	10	.50	.30
RIMA	1	3.00	2.00	1.00		1-.30
New lavender pink.						
RODERICK DHU	4-.15	10-.15	Pa.	.10
Immense ruffled pink.	1030	.15
ROI SOLEIL		2-.12	4-.15	Pa.	.10
Early yellow.	10	.50	.30

"I may say the bulbs I got from you produced splendid flowers and I have had good many admirers."

—C. G. GIANNOU, Newfoundland.

	PER	LARGE	MEDIUM	SMALL	BULBLETS	
					PER	
ROSAMOND	1	4.00	3.00	2.00	1	.50
New commercial salmon rose.	10	32.00	24.00	16.00	10	4.00
ROSE MARIE PFITZER	1	.10	2-.15
Peaches and Cream.	10	.80	.60
ROSE STANDISH	1	.10	2-.15	2-.10	15	.10
New light rose pink.	10	.80	.60	.40
ROSE WINGS	1	.15	.10	2-.15	15-10	
Velvety rosy carmine.	10	1.20	.80	.60
ROSEX		2-.15	2-.10	3-.10	15	.10
Salmon scarlet shading to rose. 8-10 open.	10	.60	.40	.25	100	.50
ROYAL YORK	1	1.50	1.00	.60	4	.25
Huge, medium dark red.	10	12.00	8.00	4.80	10	.50
RUSTY	1	.15	.10	10	.15
Bronzy color.	10	1.20	.80	100	1.00
SAHARA	1	1.50	1.00	.60	4	.25
New light brown.	10	12.00	8.00	4.80	10	.50
SALBACH'S ORCHID		2-.12	4-.15
Pink orchid shade.	10	.50	.30
SALMON EMPEROR		2-.15	2-.10	3-.10	Pa.	.10
Ruffled salmon orange.	10	.60	.40	.25	100	.30
SANDRA	1	4.00	2.50	1.50	1	.50
Shrimp pink, amber blotch.	10	32.00	20.00	12.00	10	4.00
SARASATE	1	2.50	1.75	1.25	1	.25
Striped red and slate.						
SARI		Premium bulb not for sale.				
New purple.						
SCHUBERT		2-.12	3-.10	10-.15	Pa.	.10
Creamy with scarlet blotches.	10	.50	.25	.15
SHIRLEY TEMPLE	1	3.75	2.00	1.00	1	.50
New huge ruffled cream.	10	30.00	17.00	9.00	10	4.00
SILVER SHEEN	1	.20	.15
Exhibition pink.						
SIMCOE	1	2.00	1.25	.75	1	.25
New purple.						
SMILING MAESTRO	1	.20	.10	2-.15	15	.25
Deep salmon rose, flaked brownish.	10	1.60	1.00	.60	100	1.50
SO BIG	1	1.00	.75	.50	3	.25
Large lavender pink.
SOLVEIG	1	.40	.25	.15	10	.25
Ruffled white, small pink blotch.						
SONATINE	1	.10	2-.10	3-.10	15	.10
Light pink, small red blotches.	10	.80	.40	.25
SOUTHERN CROSS		2-.14	4-.15	5-.10	20	.15
Medium red.	10	.60	.30	.18
SPRAY OF GOLD		2-.12	4-.15	10-.15	Pa.	.10
Early yellow.	10	.50	.30	.15
STAR OF BETHLEHEM	1	.20	.10	2-.10	10	.15
Immense show white.	10	1.60	.80	.40
STUTTGARDIA		2-.12	4-.15	10-.15	Pa.	.10
Large fiery orange red.	10	.50	.30	.15
SULTAN	1	.10	2-.10	3-.10	15	.10
Large velvety rose red.	10	.80	.40	.25
SUNSET CLOUD	1	.10	2-.10	3-.10	15	.10
White shaded pink.	10	.80	.40	.25
SUNSHINE GIRL		2-.12	4-.15	10-.15	Pa.	.10
Salmon, cream throat.	10	.50	.30	.15

"Also inclose two certificates of award won at the Ames gladiolus show. Note one sweepstakes was won with bloom of Hector which grew from a bulblet obtained from you last spring.

"My wife thinks Jalna is one of the most beautiful glads she has seen. I am still fascinated by Vagabond Prince. For me this variety has increased even better than Picardy. I grew seven bulblets in 1936 and harvest approximately 200 bulblets; from these I harvested in 1937 over half a peck of bulbs and bulblets."

—HARRY H. KNIGHT, Iowa.

	PER	LARGE	MEDIUM	SMALL	BULBETS PER		
SUSAN		50 cents each any size.					
New smoky pink.							
SWORD OF MAHOMET		2-.12	4-.15	10-.15	Pa.	.10	
Smoky.	10	.50	.30	.15	
SYMPHONY		2-.15	2-.10	3-.10	15	.10	
Light pink.	10	.60	.40	.25	100	.50	
TAKINA	1	.50	.40	.30	4	.25	
Huge purple.							
TERESA		2-.12	3-.10	10-.15	Pa.	.10	
Exhibition yellowish pink.	10	.50	.25	.15	
THE MOGUL	1	2.00	1.25	.75	2	.25	
Huge salmony maroon.	10	15.00	10.00	5.00	5	.50	
THE MOOR		2-.15	2-.10	3-.10	15	.10	
Deep rose red. Opens 8 at a time.	10	.60	.40	.25	
TIMBUCTOO		\$10 each any size.					
New dark red.							
TIP TOP	1	.15	.10	2-.15	10	.20	
Fine red.	10	1.20	.80	.60	
TOKEN	1	.25	
New early commercial salmon.	10	2.00	
TROUBADOUR		2-.12	4-.15	10-.15	Pa.	.10	
Best clear purple.	10	.50	.30	.15	
TUNIA'S BLUE	1	4.00	2.50	
Very large blue.							
TUNIA'S TRIUMPH	1	8.00	6.00	4.00	1-100		
Huge orange red.							
UNCAS	1	4.00	3.00	2.00	1	.50	
New exhibition orange.							
VAGABOND PRINCE	1	.50	.30	.20	5	.20	
Mahogany brown with flame blotch.	10	4.00	2.40	1.60	100	3.00	
WASAGA		2-.12	4-.15	10-.15	Pa.	.10	
Very beautiful buff.	10	.50	.30	.15	
WINGED VICTORY		2-.12	4-.15	10-.15	Pa.	.10	
Very large pink.	10	.50	.30	.15	
WURTEMBERGIA		2-.12	4-.15	10-.15	Pa.	.10	
Dazzling large light red with cream throat.	10	.50	.30	.15	
YVONNE		2-.12	4-.15	10-.15	Pa.	.10	
Flesh color, pink blotch. Fine.	10	.50	.30	.15	
ZAUBERFLOTE	1	.50	.30	.20	5	.25	
Peach rose with red blotch.		
ZUNI	1	3.00	2.00	1.00	1-30		
New Smoky.							
PALMER SEEDLINGS:							
BC25084		2-.12	4-.15	10-.15	Pa.	.10	
Tall fine orange.	10	.50	.30	.15	
26121		2-.12	4-.15	10-.15	Pa.	.10	
Immense salmon pink, yellow throat.	10	.50	.25	.15	
27271	1	.15	.10	2-.15	10-15		
Early immense red.	10	1.20	.80	.60	100-1.25		
27585		2-.15	2-.10	3-.10	15	.10	
Ruffled Mulberry.	10	.60	.40	.25	
27694		2-.15	2-.10	3-.10	15	.10	
Ruffled rose.	10	.60	.40	.25	
28263	1	.10	2-.15	2-.10	15	.10	
Fine medium red.	10	.80	.60	.40	
30092		2-.15	2-.10	3-.10	15	.10	
Rose salmon, cream throat. Fine cut flower.	10	.60	.40	.25	
30161	1	.15	.10	2-.15	10-15		
Ruffled smoke.	10	1.20	.80	.60	100-1.00		

Wholesale Prices---Not Prepaid

NOT LESS THAN 25 OF ONE SIZE AND VARIETY AT 100 RATE AND 250 AT 1000 RATE. PINT AT QUART RATE.

	Per	No. 1	No. 2	No. 3	No. 4	No. 5	No. 6	BULBETS	
								1000	QUART
ALAYNE.....	100	50.00	40.00	35.00	30.00	25.00	20.00	20.00
ALBATROSS.....	100	3.00	2.60	2.20	1.80	1.50
	1000	25.00	22.00	18.00	15.00	12.50	2.50
ALLEMANIA.....	100	40.00	35.00	30.00	25.00	20.00	15.00	per 100-5.00	
AL SMITH.....	100	3.00	2.50	2.00	1.50	1.25	.90
	1000	20.00	15.00	12.00	9.00	6.00	1.00	3.00
AMADOR.....	100	3.60	3.00	2.60	2.20	2.00	2.50	8.00
	1000	32.00	26.00	24.00	18.00	16.00
AMBERGLOW.....	100	100.00	90.00	80.00	60.00	50.00	40.00	100-3.00	
AMRITA.....	100	200.00	160.00	140.00	120.00	100	30.00
APRICOT GLOW.....	100	1.50	1.20	.80	.60	.40	.30	.30
	1000	12.00	9.00	7.00	5.00	3.00	2.0075
AVE MARIA.....	100	1.60	1.20	1.00	.80
	1000	12.00	10.00	8.00	7.00	1.00	3.00
BAGDAD.....	100	2.00	1.60	1.40	1.20	.90	.75
	1000	18.00	14.00	12.00	10.00	7.00	5.00	.75	2.00
BARCAROLE.....	100	200.00	160.00	140.00	120.00	100-30.00	
BEACON.....	100	40.00	35.00	30.00	24.00	20.00	16.00
	1000	320.00	280.00	240.00	192.00	160.00	128.00	25.00	75.00
BELLA DONNA.....	100	3.00	2.60	2.20	1.80	1.50	1.20
	1000	26.00	22.00	18.00	15.00	12.00	9.00	3.00	10.00
BETSY BOB-UP.....	100	6.00	5.00	4.00	3.00	2.40	2.00
	1000	50.00	40.00	30.00	24.00	20.00	16.00	4.00	12.00
BETTY NUTHALL.....	100	2.00	1.60	1.20	1.00	.80	.70
	1000	16.00	14.00	10.00	8.00	5.00	4.00	.75	1.50
BILL SOWDEN.....	100	3.00	2.40	2.00	1.50	1.20	.80
	1000	24.00	20.00	16.00	12.00	8.00	6.00	1.00	3.00
BIT O'HEAVEN.....	100	20.00	16.00	12.00	10.00
BLEEDING HEART.....	100	3.00	2.40	2.00	1.40	1.00	.80
	1000	20.00	17.00	14.00	10.00	8.00	6.00	1.00	3.00
BLUE ADMIRAL.....	100	6.00	4.00	3.00	2.40	2.00	6.00
BLUE DANUBE.....	100	3.20	2.50	2.00	1.60	1.20	1.00
	1000	24.00	20.00	16.00	12.00	10.00	8.00	1.00	3.00
BLUSHES OF CREAM.....	100	2.00	1.50	1.20	.90	.75	2.50
CAMELLIA.....	100	200.00	160.00	140.00	120.00	100-30.00	
CHAMPLAIN.....	100	5.00	4.50	3.60	2.80	2.40	2.00
	1000	40.00	35.00	28.00	24.00	20.00	3.60	10.00
CLARION.....	100	4.00	3.50	3.00	2.50	2.00	1.50
COM. KOEHL.....	100	3.00	2.60	2.00	1.40
	1000	24.00	20.00	16.00	12.00	1.00	3.00
CONSTANCY.....	100	2.50	2.00	1.60	1.20	1.00	.80
	1000	20.00	16.00	12.00	9.00	7.00	5.00	1.00	2.50
COQUETTE.....	100	5.00	4.50	3.60	2.80	2.40	2.00	4.00
CORONATION.....	100	3.00	2.40	2.00	1.40	1.20	.90
	1000	16.00	12.00	10.00	7.00	1.00	3.00
DEBONAIR.....	100	2.40	2.00	1.60	1.20	1.00	.80
	1000	20.00	16.00	14.00	10.00	8.00	6.00	1.00	3.00
DREAM O'BEAUTY.....	100	2.60	2.20	1.80	1.00
DR. MOODY.....	100	2.00	1.60	1.20
	1000	18.00	14.00	10.00

"I wish to say that my three collections of glads I bought from you last year were simply grand. I don't see how you can put out such a wonderful collection at that price. They were admired by my neighbors. Vagabond Prince is sure a beauty. He won a prize for me at the fair."

—F. W. SMITH, N. Y.

	Per							BULBETS	
		No. 1	No. 2	No. 3	No.4	No. 5	No. 6	1000	QUART
DUNA.....	100	2.20	1.80	1.40	1.00	.80	.70
	1000	18.00	15.00	12.00	9.00	7.00	6.00	1.00	2.00
EARLY DAWN.....	100	2.50	2.00	1.60	1.20	1.00
	1000	20.00	16.00	12.00	9.00	7.00	1.00	2.00
EARLY PEACH.....	100	10.00	9.00	6.00	4.00	3.00	2.00
	1000	80.00	64.00	48.00	32.00	24.00	16.00	4.00	12.00
EDITH MASON.....	100	3.00	2.00	1.50	1.20	.90
	1000	16.00	12.00	9.00	7.00	1.25	3.50
EDITH ROBSON.....	100	2.50	2.00	1.60	1.20	1.00	.80
	1000	20.00	16.00	12.00	9.00	7.00	5.00	1.00	2.50
ELOISE.....	100	40.00
ESCORT.....	100	5.00	4.00	3.00	2.00
	1000	32.00	24.00	16.00	3.00
EVENSONG.....	100	3.50	3.00	2.50	2.00	1.50	1.00
	1000	24.00	20.00	16.00	12.00	8.00	2.00	6.00
EXCELLENCE.....	100	2.50	2.00	1.50	1.20	.90	.80
	1000	20.00	16.00	12.00	9.00	7.00	6.00	1.00	2.00
FRANK J. McCOY.....	100	3.50	3.00	2.00	1.60	1.20	.90
	1000	28.00	22.00	16.00	12.00	8.00	6.00
GATE OF HEAVEN.....	100	4.00
GLORIANA.....	100	2.50	2.0075	1.50
	1000	20.00	16.00
GOLDEN BROWN.....	100	2.00	1.5075	2.00
GOLDEN CUP.....	100	2.20	1.80	1.40	1.00	.80	.70
	1000	18.00	15.00	12.00	9.00	7.00	5.00	1.00	2.50
HECTOR.....	100	15.00	12.00	10.00	8.00	7.00	6.00	10.00
HERCULES.....	100	8.00	6.50	5.00	4.00	3.00	2.50	4.00
HERITAGE.....	100	8.00	6.00	5.00
INNOVATION.....	100	15.00	12.00	10.00	8.00	6.00	5.00	10.00
JALNA.....	100	100.00	90.00	80.00	70.00	60.00	40.00	20.00	50.00
JONQUIL.....	100	15.00	12.00	10.00	8.00	7.00	6.00
	1000	100.00	80.00	70.00	55.00	45.00	15.00	50.00
KING ARTHUR.....	100	4.00	3.20	2.40	2.00	1.60	1.20
	1000	36.00	28.00	22.00	15.00	12.00	10.00	2.00	5.00
LA PALOMA.....	100	2.00	1.60	1.20	1.00	.8075	1.50
LOYALTY.....	100	3.00	2.50	2.00	1.50	1.20	.90
	1000	20.00	18.00	15.00	12.00	9.00	6.00	.75	2.50
LUCIFER.....	100	3.50	3.00	2.50	2.00	1.50	1.20
	1000	30.00	25.00	20.00	16.00	12.00	9.00	2.00	5.00
MAID OF ORLEANS.....	100	3.00	2.50	2.00	1.60	1.20	1.00
	1000	25.00	20.00	16.00	12.00	10.00	8.00	1.60	4.80
MAMMOTH WHITE.....	100	2.80	2.40	1.80	1.60	1.20	1.00
	1000	24.00	20.00	15.00	12.00	9.00	8.00	1.25	3.50
MARGARET FULTON.....	100	2.00	1.60	1.20	1.00	.90	.80
	1000	18.00	14.00	10.00	9.00	8.00	6.00	.75	2.00
MARGARET PETER.....	100	3.00	2.50	2.00	1.50	1.20	.90
	1000	24.00	20.00	16.00	12.00	9.00	7.00	1.50	3.50
MARMORA.....	100	2.20	1.60	1.20
	1000	19.00	14.00	10.00
MARY ELIZABETH.....	100	3.00	2.50	2.00	1.50	1.20
	1000	24.00	20.00	16.00	12.00	10.00	1.50	3.50
MAYTIME.....	100	5.00	4.00	3.50	2.50	2.00
	1000	35.00	27.00	20.00	15.00	2.50	6.00
MILDRED LOUISE.....	100	3.00	2.40	2.00	1.60	1.20	1.00
	1000	25.00	20.00	16.00	12.00	10.00	8.00	2.40	8.00
MILFORD.....	100	18.00	14.00	10.00	9.00	7.00	6.00	8.00
MINUET.....	100	3.00	2.50	2.00	1.60	1.20
	1000	24.00	20.00	15.00	12.00	9.00
MISS BLOOMINGTON.....	100	2.50	2.00	1.50	1.20	.90
	1000	20.00	16.00	12.00	9.00	7.00	1.50	3.50

"Kindly see that I receive a nice assortment of bulbs and if they are good as those I received last spring I will be well satisfied as I must say your bulbs were much better than many other collections I purchased."

—R. H. CONKLIN, N. J.

	Per							BULBULETS	
		No. 1	No. 2	No. 3	No. 4	No. 5	No. 6	1000	QUART
MOROCCO.....	100	3.00	2.50	2.00	1.50	1.20	.90
	1000	20.00	16.00	20.00	9.00	7.00	1.00	3.00
MOTHER MACHREE... 100		2.40	2.00	1.60	1.20	1.00
MRS. ERREY.....	100	3.00	2.60	2.20	1.80
MRS. LANGFORD..... 100		4.50	4.00	3.00	2.50	2.00	1.50
	1000	36.00	32.00	24.00	18.00	15.00	12.00
MYWAG.....	100	100.00	90.00	80.00	70.00	60.00	40.00
NETHERLAND PRINCE. 100		5.00	4.00	3.50	2.50	2.00
	1000	45.00	35.00	27.00	20.00	15.00	2.50	6.00
NYORA.....	100	2.50	2.00	1.50	1.20	.90
	1000	16.00	12.00	9.00	7.00	1.50	3.50
ORANGE BUTTERFLY.. 100		2.50	2.00	1.50	1.20	.90	1.50
ORANGE SOVEREIGN.. 100		3.00	2.50	2.00	1.50	1.20	.90
	1000	24.00	20.00	16.00	12.00	9.00	7.00	1.50	3.50
OUR SELECTION..... 100		1.40	1.20	1.00
	1000	12.00	10.00	8.0075	2.00
PARADISE.....	100	10.00	8.00	6.00	4.00	3.00	2.00	4.00	12.00
PELEGRINA.....	100	2.50	2.00	1.60	1.40	1.20	.90
	1000	20.00	16.00	13.00	10.00	8.00	6.00	1.50	3.00
PHYLLIS McQUISTION. 100		6.00	4.00	3.00	2.00	1.50	1.00	2.00	6.00
PICARDY.....	100	2.20	1.60	1.20	1.00	.70	.50
	1000	18.00	14.00	10.00	8.00	6.00	4.00	.75	1.00
PINNACLE.....	100	2.50	2.00	1.60	1.40	1.20	.90
	1000	20.00	16.00	13.00	10.00	8.00	6.00	1.50	3.00
PIRATE.....	100	1.60	1.20	1.50	3.00
PREMIER HENRY..... 100		10.00	8.00	6.00	5.00	4.00
	1000	80.00	64.00	48.00	40.00	30.00	5.00	15.00
QUEEN HELEN II..... 100		3.20	2.50	2.00	1.60	1.20	1.00
	1000	24.00	20.00	16.00	12.00	10.00	8.00	1.00	3.00
RAPTURE.....	100	2.40	2.00	1.60	1.20	.90	.70
	1000	20.00	16.00	14.00	11.00	8.00	6.00	.75	2.00
RED LORY.....	100	2.40	2.00	1.40	1.20	.90
	1000	16.00	12.00	10.00	7.00	1.50	4.00
RED PHIPPS.....	100	3.00	2.40	2.00	1.40	1.00	.90
	1000	25.00	20.00	16.00	12.00	9.00	7.00	1.60	4.50
REGENT.....	100	125.00	100.00	80.00	70.00	60.00	100-8.00
REVERIE.....	100	6.50	5.50	4.50	3.50	2.50	2.00
	1000	44.00	36.00	28.00	20.00	16.00	5.00	15.00
REWI FALLU.....	100	200.00	160.00	120.00	100.00	80.00	60.00	100-12.00
ROSE STANDISH..... 100		6.50	5.50	4.50	3.50	2.50	2.00
	1000	44.00	36.00	28.00	20.00	16.00	5.00	15.00
ROSEX.....	100	6.50	5.50	4.50	3.50	3.00	2.50
	1000	42.00	35.00	28.00	24.00	20.00	8.00
ROYAL YORK.....	100	100.00	90.00	80.00	70.00	60.00	40.00	100-4.00
SALMON EMPEROR... 100		3.50	2.50	2.00	1.20	.80	1.60	3.00
SANDRA.....	100	200.00	160.00	120.00	100.00	80.00	100-20.00
SHIRLEY TEMPLE..... 100		160.00	136.00	96.00	72.00	100-25.00
SMILING MAESTRO... 100		12.00	9.00	6.00	5.00	4.00	12.00
SO BIG.....	100	60.00	50.00	40.00	30.00	100-6.00
SOLVEIG.....	100	14.00	20.00	15.00	10.00	8.00
SONATINE.....	100	7.00	6.00	5.00	4.00	3.00	2.40
	1000	60.00	50.00	40.00	30.00	24.00	20.00	3.00	10.00
STAR OF BETHLEHEM. 100		12.00	7.00	5.00	4.00	3.00
	1000	100.00	40.00	30.00	24.00	12.00
SULTAN.....	100	4.00	3.00	3.00	2.50	100-.35
	1000	30.00	24.00	20.00	3.00
SUNSET CLOUD..... 100		4.00	3.00	2.50	2.00	100-.35
	1000	30.00	24.00	20.00	15.00	3.00
SWORD OF MAHOMET. 100		2.00	1.50	1.00	.80	2.00
SYMPHONY.....	100	4.00	3.50	3.00	2.50	2.00	1.50
	1000	30.00	26.00	22.00	20.00	16.00	12.00	2.00	6.00

	Per	No. 1	No. 2	No. 3	No. 4	No. 5	No. 6	BULBLETS	
								1000	QUART
THE MOGUL.....	100	100.00	90.00	80.00	60.00	40.00	100-8.00
TOKEN.....	100	15.00	15.00	15.00
VAGABOND PRINCE.....	100	40.00	32.00	24.00	20.00	16.00	12.00
	1000	300.00	250.00	200.00	160.00	128.00	96.00	24.00	75.00
WASAGA.....	100	2.20	1.80	1.40	1.00	.80	.70
	1000	18.00	15.00	12.00	9.00	7.00	6.00	1.00	3.00
WURTEMBERGIA.....	100	3.20	2.40	1.80	1.40	1.20	1.00
	1000	20.00	16.00	12.00	9.00	7.00	1.60	5.00
YVONNE.....	100	2.00	1.60	1.40	1.00	.80
	1000	16.00	12.00	9.00	7.00	5.00	.75	1.50
PALMER SEEDLINGS:									
BC25084.....	100	2.00	1.60	1.20	.90	.70
	1000	16.00	14.00	11.00	8.00	6.00	.75	2.00
26121.....	100	4.00	3.00	2.00	1.50	1.00	2.00
27271.....	100	12.00	10.00	8.00	6.00	4.00	10.00
27585.....	100	4.00	3.00	2.50	2.00	5.00
28263.....	100	7.00	5.50	5.00	4.50	3.50	.60
30092.....	100	2.50	2.00	1.50
	1000	15.00	12.00	2.50
30161.....	100	10.00	8.00	6.00	5.00	4.00	8.00

Special Collections and Sets

ALL COLLECTIONS PREPAID EXCEPT NO. 42-44a. ALL ARE LABELED
EXCEPT THE FIRST FOUR.

No. 1. UNLABELED COLLECTION. 100 assorted large bulbs (1 inch up) in at least 40 varieties in about every shade in gladiolus. I have sold this collection for years and have thousands of very well pleased customers. I positively guarantee there is not a better collection sold by any grower in the country for anywhere near the price. I get many repeat orders every year from well pleased customers. 100 for \$3.00; 50 for \$1.75; 25 for \$1.00 all prepaid. With each 100 bulbs of this collection I will put in free 2 large Vagabond Prince bulbs worth \$1.30. This is a very unusual and beautiful variety. Or if you prefer will put in a \$1.50 bulb of my choosing. Also 5 large Picardy bulbs.

No. 1a. SAME COLLECTION IN MEDIUM SIZE BULBS. 100 bulbs for \$2.00; 50 for \$1.25. With 100 bulbs will give 5 medium Picardy Free and 1 large Vagabond Prince.

No. 2. UNLABELED COLLECTION. 100 assorted as above containing 45 varieties and including many of the newer and higher priced ones. A wonderful collection at a moderate price. 100 for \$5.00; 25 and 50 at the same rate.

No. 3. UNLABELED COLLECTION DE LUXE. 50 or more varieties, many of them being exhibition sorts and worth several times the price asked. Real aristocrats in gladiolus. Nothing better to be had in an unlabeled collection. 100 for \$10.00; 25 and 50 at the same rate.

NONE OF THE ABOVE COLLECTIONS ARE LABELED AS TO VARIETIES. Don't ask us to give you the names of the varieties in the collections as we politely do not do it at these prices. If you want them labeled buy them under name. I guarantee the collections to be the best you can buy for the price.

"Having purchased a hundred dollars worth of gladiolus bulbs from you for a brand new commercial cut flower garden perhaps you would like to know that they sold so well that I took in over \$250.00 from the sale of the blossoms. Had no trouble in getting \$1.00 a dozen for the blooms altho within three miles of my garden there were four other people selling nice blooms at 35c and 50c per dozen. I cut 350 blooms one day and every one was at least 5-3 in. long.

"I shall be ordering more soon as so many people wanted to buy bulbs that my stock of some varieties is depleted. Many thanks to you for your help in selecting the varieties best suited to my purpose. I really can't express on paper how enthusiastic everyone was over the gorgeous blooms.

—E. C. PALMER, Conn.

No. 4. BETTER TIMES COLLECTION. Large bulbs \$3.00. All labeled. A very fine collection for a beginner or anyone else. Splendid varieties in many types and colors ranging from white thru many shades of pink, red, orange, yellow, salmon, smoke, blue and lavender. You can't get started in good named varieties in a less expensive way than in getting this collection or one of the next five.

4 AMADOR	2 ECSTASY	2 MAMMOTH WHITE
4 APRICOT GLOW	2 EDITH ROBSON	2 ORANGE SOVEREIGN
2 BELLA DONNA	2 EMMA	2 OUR SELECTION
3 BETTY NUTHALL	4 EXCELLENCE	2 PURPLE QUEEN
3 BLEEDING HEART	4 GOLDEN BROWN	2 RIDEAU
3 BLUE DANUBE	2 HINEMOA	4 SPRAY OF GOLD
2 BLUSHES OF CREAM	2 KING ARTHUR	4 SUNSHINE GIRL
3 DUNA	2 LOYALTY	3 BC25084, fine orange
2 EARLY DAWN	2 LUCIFER	

No. 5. Same as above in **medium size bulbs for \$2.20.** Wonderful value.

No. 6. \$3.00 LABELED COLLECTION. Another fine assortment of varieties and colors. **Large bulbs.**

2 AFLAME	2 MARGARET FULTON	3 QUEEN HELEN II
2 ALBATROSS	2 MARGARET PETER	3 RAPTURE
5 BAGDAD	2 MARY ELIZABETH	3 SCHUBERT
3 BILL SOWDEN	2 MAUVE MAGIC	2 SONATINE
2 CONSTANCY	4 MISS BLOOMINGTON	2 SULTAN
3 GIANT NYMPH	2 NYORA	3 SYMPHONY
2 GOLDEN BROWN	4 ORANGE BUTTERFLY	5 YVONNE
2 GOLDEN CUP	3 PAUL PFITZER	2 SEEDLING 27694,
2 HEATHFIELD	2 PFITZER'S TRIUMPH	ruffled rose

No. 7. \$2.20 LABELED COLLECTION. Same as above in **medium size.**

No. 8. \$3.00 LABELED COLLECTION. Large bulbs. Another lot all different from the two previous sets.

3 BERTY SNOW	2 MOONDARA	4 SALMON EMPEROR
2 BETSY BOB-UP	4 MOROCCO	3 STUTTGARDIA
3 CLARION	2 MOTHER MACHREE	2 SWORD OF MAHOMET
2 CHAS. DICKENS	2 MRS. LANGFORD	4 TERESA
2 CORONATION	2 NETHERLAND PRINCE	2 TROUBADOUR
2 DR. DURR	3 PELEGRINA	3 WASAGA
3 GLORIANA	3 PINNACLE	2 WINGED VICTORY
3 LOTUS	4 PRIMROSE PRINCESS	3 WURTEMBERGIA
2 MIBLOOM	2 RODERICK DHU	

No. 9 LABELED COLLECTION. \$2.20. Same as above in **medium size.**

The above collections, No. 4, No. 6 and No. 8 are all different. Also of course the corresponding collections No. 5, No. 7 and No. 9. The whole three sets either of the large or medium ones will make a really wonderful collection and will make your garden the envy of your neighborhood.

Will Sell the THREE SETS, No. 4, No. 6 and No. 8 for \$8.50. Or sets No. 5, No. 7 and No. 9 for \$5.85.

With any one set No. 4 to No. 9 ordered and paid for before March 1, I will put in **5 medium Picardy extra.** Or if you order the three sets No. 4, No. 6 and No. 8 I will put in a **large Mywag free** in addition to the 5 medium Picardy. With sets No. 5, No. 7 and No. 9 will give a **medium Vagabond Prince or Beacon.**

No. 10. SUPERIOR LABELED COLLECTION ENTIRELY DIFFERENT FROM THE PREVIOUS ONES, \$1.90. One large bulb each of the following. 2 bulbs each for \$3.50.

AMADOR	GLADYS CLEGG	OLIVE MARIE BROWN
AVE MARIA	GOLDEN FLAME	PHYLLIS McQUISTON
BENEDICT	HERCULES	RECOVERY
BETSY BOB-UP	INNOVATION	ROSE STANDISH
BLUE ADMIRAL	MILFORD	SMILING MAESTRO
CAESAR	ODALISQUE	STAR OF BETHLEHEM

No. 11. LABELED COLLECTION. \$1.35. One medium bulb each of the varieties in No. 10. 2 each for \$2.50.

"Many extras you so kindly sent, of which Champlain was outstanding, and I think it is the best light blue. Pinnacle is a dandy and gave wonderful account of itself and was well liked."

—A. C. HESS, N. J.

No. 12. LABELED PALMER COLLECTION. \$1.15. One large bulb each of the following varieties.

CHAMPLAIN
DEBONAIR
DUNA
EVENSONG
GOLDEN CUP

HECTOR
JONQUIL
PICARDY
PIRATE
PREMIER HENRY

RAPTURE
REVERIE
ROSEX
SYMPHONY
WASAGA

No. 13. LABELED PALMER COLLECTION. 85 cents. 2 medium bulbs each of the varieties in No. 12.

No. 14. LABELED PALMER COLLECTION. \$5.50. One large bulb each of the following varieties.

AMBERGLOW
BEACON

JALNA
MYWAG

ROYAL YORK
VAGABOND PRINCE

No. 15. LABELED PALMER COLLECTION. \$4.00 2 medium bulbs each of the varieties in No. 14.

No. 16. LABELED PALMER COLLECTION. \$5.50. One large bulb each of *Regent*, *Angelus*, *Sahara* and the *Mogul*.

No. 17. LABELED PALMER COLLECTION. \$4.00. One medium bulb each of the varieties in No. 16.

No. 18. LABELED PALMER COLLECTION. \$20.00. One large bulb each of *Amrita*, *Barcarole*, *Camellia*, *Helena*, *Recado* and *Sandra*.

No. 19. LABELED PALMER COLLECTION. \$15.00. One medium bulb each of the varieties in No. 18.

No. 20. PALMER BULBLET COLLECTION. \$3.50. 2 large selected bulblets each of the varieties in No. 18.

No. 21. VAGABOND PRINCE SPECIAL. \$5.00. 5 large, 5 medium, 10 small, 100 bts.

No. 22. VAGABOND PRINCE. \$20.00. 10 large, 10 medium, 50 small, 500 bts.

Collections by Color

No. 23. DARK AND MEDIUM BLUE. 5 medium each *Pelegrina*, *Ave Maria*, *Blue Admiral* for 50 cents.

No. 24. LIGHT BLUE. 5 each medium *Blue Danube*, *Bella Donna*, *Champlain*, 2 *Milford* for 65 cents.

No. 25. DARK RED. 5 each medium *Ecstasy*, *Dr. Hoeg*, *Morocco*, *Pirate* for 60 cents.

No. 26. MEDIUM RED. 5 each medium *Bill Sowden*, *Cardinal Prince*, *Com. Koehl*, *Heathfield* for 50 cents.

No. 27. LIGHT RED or SCARLET. 5 each medium *Excellence*, *Dr. Bennett*, *Red Phipps*, *Wurtembergia* for 50 cents.

No. 28. ORANGE. 5 each medium *La Paloma*, *Leander*, *Orange Butterfly*, *Orange Sovereign*, *BC25084* for 55 cents.

No. 29. YELLOW. 5 each medium *Loyalty*, *Golden Cup*, *Miss Bloomington*, *Spray of Gold* for 50 cents.

No. 30. LAVENDER. 5 each medium *Berty Snow*, *King Arthur*, *Minuet*, *Mauve Magic* for 50 cents.

No. 31. ROSE PINK. 5 each medium *Benedict*, *Constancy*, *Dream O'Beauty*, *Pinnacle* for 65 cents.

No. 32. SALMON PINK. 5 each medium *Betty Nuthall*, *Giant Nymph*, *Margaret Fulton*, *Winged Victory*, *Queen Helen II* for 65 cents.

No. 33. SALMON PINK. 5 each medium *Al Smith*, *Coronation*, *Picardy*, *Rapture*, *Sunshine Girl* for 60 cents.

No. 34. LIGHT PINK. 5 each medium *Betty Coed*, *Debonair*, *H6141*, *Symphony*, *Sonatine* for 65 cents.

No. 35. WHITE. 5 each medium *Dr. Durr*, *Helen Wills*, *Mammoth White*, *Maid of Orleans* for 60 cents.

No. 36. BLOTCHED. 5 each medium *Bleeding Heart*, *Edith Robson*, *Mrs. F. E. Bennett*, *Margaret Peter*, *Nyora* for 60 cents.

No. 37. SMOKY AND ODD SHADES. 5 each medium *Bagdad*, *Golden Brown*, *Evensong*, *Mother Machree*, *October* for 60 cents.

No. 38. CREAM AND BUFF. 5 each medium Blushes of Cream, Duna, Lotus, Wasaga, Yvonne for 60 cents.

No. 39. EARLY VARIETIES. 5 each medium Al Smith, Excellence, Early Dawn. Margaret Peter, Miss Bloomington for 55 cents.

No. 40. EXHIBITION VARIETIES. 5 each large Picardy, Bagdad, Edith Robson, Bleeding Heart, F. J. McCoy, Pinnacle for \$1.30.

No. 41. EXHIBITION VARIETIES. Same as above except medium size for 80 cents.

Growers Collections---Not Prepaid

No. 42. LARGE SIZE. No. 1 and No. 2 assorted, 1000 bulbs for \$14.00. 100 each of any 10 of the following varieties for \$14.00. Not less than 1000 at this price. If you do not want just 100 each of 10 varieties you can have more of certain kinds and less of others but not more than 250 nor less than 50 of any one kind and not less than 7 varieties nor more than 15.

BAGDAD	DEBONAIR	PELEGRINA
BETTY NUTHALL	DUNA	PICARDY
BILL SOWDEN	EXCELLENCE	PINNACLE
BLEEDING HEART	GOLDEN CUP	RAPTURE
CONSTANCY	MARGARET FULTON	YVONNE
	MARGARET PETER	

No. 42a. 500 LARGE SIZE bulbs of above varieties for \$7.50. Not less than 500 at this price. 50 each of any 10 of the above varieties or not more than 125 nor less than 35 of any one kind and not less than 7 kinds nor more than 14.

No. 43. MEDIUM SIZE. No. 3 and No. 4 assorted. 1000 bulbs for \$10.00. The same conditions as to number of varieties and amounts of each variety as in No. 42.

AL SMITH	EDITH ROBSON	PICARDY
BAGDAD	EXCELLENCE	PINNACLE
BETTY NUTHALL	GOLDEN CUP	PRIDE OF WANAKAH
BILL SOWDEN	LA PALOMA	RAPTURE
BLEEDING HEART	LOYALTY	SPRAY OF GOLD
CONSTANCY	MARGARET FULTON	WASAGA
DEBONAIR	MARGARET PETER	YVONNE
DUNA	PELEGRINA	BC25084 ORANGE

No. 43a. MEDIUM SIZE. 500 bulbs for \$5.50. 50 each of any 10 of the varieties in the above offer. And the same conditions as to number of varieties and amounts of each variety as in No. 42a.

No. 44. SMALL BULBS. 100 each of any 10 of the following varieties for \$5.00. The same conditions as to number of varieties and amounts of each variety as in No. 42.

APRICOT GLOW	EDITH ROBSON	PRIDE OF WANAKAH
AVE MARIA	EXCELLENCE	QUEEN HELEN II
BAGDAD	GOLDEN CUP	RAPTURE
BETTY NUTHALL	JANET	SCARLET BEDDER
BILL SOWDEN	LOYALTY	SCHUBERT
BLEEDING HEART	MAMMOTH WHITE	SUNSHINE GIRL
BLUSHES OF CREAM	MARGARET FULTON	WASAGA
CONSTANCY	MISS BLOOMINGTON	YVONNE
DEBONAIR	MRS. F. E. BENNETT	BC25084
DUNA	PICARDY	26121
ECSTASY	PINNACLE	27123 BLUE

No. 44a. SMALL BULBS. 500 bulbs No. 5 and No. 6, largely No. 5, for \$3.00. The same varieties as in No. 44. The same conditions as to number of varieties and the amounts of each variety as in No. 42a. If any of the above varieties are priced at less than \$5.00 per thousand for small bulbs in my regular wholesale list I will put in extra count or larger size. Any of these bulbs in No. 44 and No. 44a should give satisfactory bloom though there may be some small bulbs that may not bloom 100% this year but if they don't they will make fine large-bulbs for next year.

"I saw your exhibit at New York this year and thought it very beautiful. Small wonder that Amulet won the medal for best seedling as it was in my estimation by far the most beautiful glad in the show."
—PAUL SCHIERZ, N. J.

"The Picardys, Mammoth Whites, Wasaga and Duna along with the extras of Beacon and Sandra were the most outstanding of all my glads."
—MONROE TUTTLE, Mich.

50 Cent Specials

No. 45

To get good blooms it is not necessary to plant large bulbs. You can produce very acceptable flowers from small bulbs and often medium size ones will give you very nearly as good bloom as the largest bulbs. By planting all sizes of the same variety at the same time you will have bloom from that variety over a long period as the small bulbs do not bloom so early. Many people like to do this so they can have the blooms of their favorite varieties over a long period.

I am offering these 50 cent specials consisting of very good value in various size bulbs in the list below.

If you want some bulblets in place of part of the bulbs just mention it, otherwise I will put in all bulbs in different sizes.

There are not the same number of bulbs in each variety because some are a little higher priced than others but you will get big value in all of them.

Remember each 50 cent special is only one variety. In past years some customers have thought they were going to get an assortment of all the varieties for 50 cents.

Any five lots for \$2.25. Any ten lots for \$4.00 or any 15 for \$5.75. In addition to this I will put in a bulb or two of something good for you to try out.

Albatross	Golden Brown	Our Selection
Al Smith	Golden Cup	Pelegrina
Amador	Hillbilly	Picardy
Ave Maria	King Arthur	Pinnacle
Bagdad	Lotus	Pirate
Bella Donna	Loyalty	Queen Helen II
Betty Nuthall	Lucifer	Rapture
Bill Snowden	Maid of Orleans	Red Lory
Bleeding Heart	Mammoth White	Reverie
Blue Danube	Margaret Fulton	Rideau
Clarion	Margaret Peter	Roderick Dhu
Constasy	Mary Elizabeth	Rozex
Coquette	Mother Machree	Salmon Emperor
Dream O'Beauty	Mrs. Errey	Schubert
Early Dawn	Mrs. F. E. Bennett	Sonatine
Ecstasy	Mrs. Langford	Winged Victory
Edith Mason	Netherland Prince	Yvonne
Edith Robson	Orange Butterfly	BC25084
Evensong	Orange Princess	H6141
Excellence	Orange Sovereign	30092

Dollar Assortments

No. 46

Here is another lot similar to the previous one but each set of assorted size bulbs of a kind is \$1.00. Any five for \$4.60, any ten for \$8.50, or fifteen for \$12.00.

Just leave it to me to satisfy you on any of these lots of assorted size bulbs in the last two offers. If you want some bulblets and less bulbs just say so and I can fix them up that way.

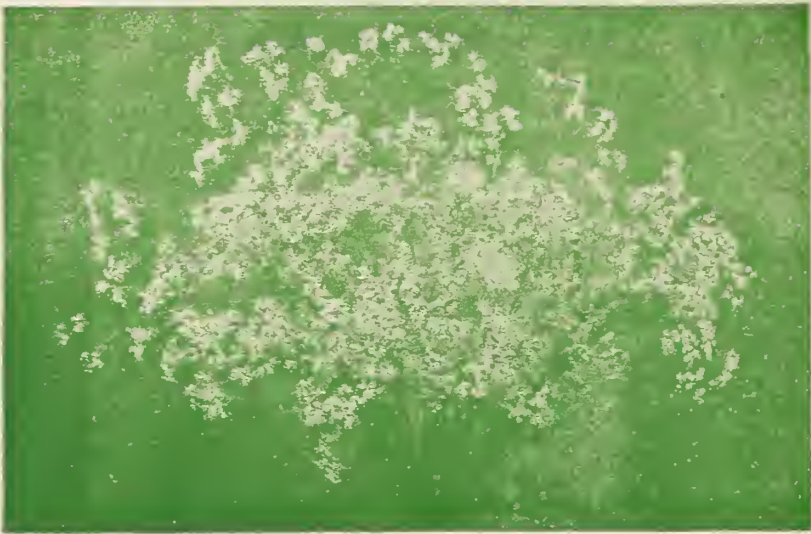
Benedict	Early Peach	Jonquil
Betsy Bob-Up	Gladys Clegg	Leander
Blue Admiral	Golden Flame	Milford
Caesar	Hector	Premier Henry
Champlain	Hercules	Rose Standish
Dr. Hoeg	Innovation	Smiling Maestro

Creve Coeur

(YOUNG) (Dec) (100) This is a new variety that I missed in my catalog. One that I tried out this past season for the first time and found it a very remarkable variety. It is a smoky burnt orange with a large red blotch tipped with yellow. Very strong healthy grower, good propagator, very tall and straight with seven blooms open. It is extremely showy and attractive. One that will attract you from way across the field. I am sure that you are going to like Creve Coeur and will want more later. I like this variety so well that I have bought half the stock.

Prices are as follows:

	No. 1	No. 2	No. 3	No. 4	No. 5	No. 6	Bulblets
Each	.50	.40	.35	.30	.25	.20	.10
10	4.00	3.00	2.50	2.00	1.60	1.25	.60
100	30.00	24.00	20.00	15.00	12.50	10.00	4.00



Euphorbia Corolata (FLOWERING SPURGE)

This is a hardy perennial somewhat similar to double Baby's Breath but blossoms later. Blooms through August and September. Just the thing to go with glads or any other kind of flower. Will grow on most any kind of soil, even on dry sand, but good garden soil will make it very much better.

This is a plant that should be grown in every garden and commercial growers should plant it by the hundred. Absolutely hardy and I am sure you will like it.

In the northern states I would suggest Euphorbia be planted early in the spring. In the south or where it does not freeze hard, fall planting would be perfectly all right.

Though Euphorbia is easy to handle, and there should be no reason for it not doing well, I have had some complaints about the roots not growing. I don't know why this is because if they are planted at once and given a good watering they should all grow. I have had no trouble with them myself. But in as much as I have had some complaints I no longer guarantee the roots. I do give good strong healthy roots and if given half a chance they should grow but if they do not grow I shall not be responsible.

Prices are 4 roots for 60 cents or one dozen for \$1.25 prepaid. **We do not sell less than four as they cannot be shipped with the gladiolus bulbs. We have to make a separate shipment.**

100 roots \$6.00 f.o.b. with 50 at the 100 rate.

Pure Vermont Maple Syrup

Griddlecakes or Waffles and Syrup. Um! Um!

If you have never eaten the pure unadulterated Vermont Syrup you don't know what you have missed. The black blended concoctions sold thruout the country as Maple Syrup are not to be compared with the real Vermont Syrup any more than Halley is to be compared with Picardy. Then a lot of Vermont Maple products are not of good quality. I am a connoisseur of good syrup and send out only the best grade such as I would eat myself.

A gallon of syrup or some sugar would make a fine Christmas present. Send me your addresses and Christmas cards and I will take care of your orders for you.

Prices are F.O.B. Burlington. A gallon can be sent as far south as Virginia for 35 cents and to the West Coast for \$1.00. The Express companies make a special rate on Maple products. Parcel Post costs much more. A gallon of syrup weighs 13 lbs. packed for shipment.

1 Gallon \$2.75

½ Gallon \$1.50

1 Quart 90 cents

A case of 12 Pints \$4.50

A case of 12 Half-pints \$2.75

MAPLE SUGAR. 2 oz. cakes 60 cents a lb. 5 lb. pail soft sugar \$2.50.

MAPLE CREAM, a delicious cream that can be spread. 1 lb. tins 65 cents. 5 lb. tins \$2.65

See page 9 of the Catalog for other Maple Products.

"The last two sets of No. 1 collection I received from you I could not have picked any better myself."
—MRS. E. BURROUGHS, Virginia.

Albatross ★★★ (PF) (EX) (Com) (80-85) Large pure white with 6-8 blooms open on a tall very vigorous plant. Blooms face up in the so-called lily form. This variety is not considered so good as Maid of Orleans but many people still like it.

Alchemist ★★½ (PF) (Dec) Large wide open rich yellow.

Allegro ★★★ (PF) (Dec) Beautiful light lavender blue. To me this is about the prettiest light blue I know of but doesn't propagate quite so fast as I would like.

Allemania ★★ (PF) (EX) Huge scarlet lighter in shade than Commander Koehl and earlier. Good for exhibition.

Al Smith ★★ (K) (Com) (66) Very early tall salmon rose. Medium size flowers. Because of its earliness it is in big demand by the florists.

Amador ★★★ (KINGSLEY) (Dec) (Com) Medium red overspread with a glowing sheen. Does not burn in the sun. 5-8 large beautiful blooms open at a time and becoming more popular every year.

Amberglow Palmer strain. See page 13.

Amrita Palmer strain. See page 13.

Amulet Palmer strain. See page 13.

Angelus Palmer strain. See page 13.

Apricot Glow Palmer strain. See page 13.

Ave Maria ★★★ (PF) (EX) (Com) (75-80) Medium blue with small purplish blotches. Several large well placed blooms open at a time. An old variety but still one of the best for commercial and exhibition uses.

Awatea ★★★ (BURNS) (EX) Peach blossom growing somewhat darker toward the edge. Sulphur yellow throat. Opens up to 10 at a time. Good for exhibition.

Bagdad Palmer strain. See page 13.

Barcarole Palmer strain. See page 13.

Beacon Palmer strain. See page 14.

"Of 125 varieties my favorite is Duna. Lady Winsome is fine in spite of sometimes crooking. Other favorites are Pirate, Reverie, Coronation, Miss Alameda, Gladys Clegg, King Arthur."
—KENNETH W. HOUGHTON, Mass.

"The bulbs you sent me produced wonderful flowers. The finest I saw last summer."
—NELLIE HENDRICKSON, Md.

Beautiful Ohio ★★½ (HULLIBARGER) (Com) (Dec) Very beautiful new shade of rose lavender. Medium size flowers and medium height but a very nice distinct color that should make it useful to florists.

Bella Donna ★★★ (PF) (Dec) (Com.) Early large light blue with darker blotch. 6-8 open at a time. One of the best growers of the blues. I understand that on the Pacific coast the florists prefer this to most any other blue.

Benedict ★★½ (CROW) (Dec) (85) Velvety deep rose with 5-6 medium large round ruffled blooms of heavy substance open at a time. A beautiful deep rose. Not quite so tall as we would like but nice for the home garden.

Beowulf ★★ (NITCHMAN) (Com) (Dec) Late. Tall strong growing light rose lavender. A nice color.

Bernece New introduction. See page 25.

Berty Snow ★★★ (MAIR) (EX) (Com) (75-80) Pinkish lavender often flecked darker. 7-10 large well placed blooms on a long spike. Fine commercial and exhibition variety.

Betsy Bob-Up ★★★★★ (CANINE) (EX) (Com) (100) A sport of Betty Nuthall with all the good qualities of that variety. The color is creamy yellow tinged with pink. The first two years I had this I didn't care so much for it but this past season it has been really fine and I feel sure will become a popular variety. There is a place for it.

Betty Humphries ★★½ (MOIR) (EX) (Com) Late. Glorified Betty Nuthall. Deep salmon pink shading to cream center. Up to 10 large blooms open. Have not seen a bloom of this but it is said to be fine.

Betty Nuthall ★★★★★ (SAL) (EX) (Com) (100) Warm coral pink with pale yellow throat markings and a tinge of orange. General effect is salmon color. 6-8 medium large blooms open on an enormously tall strong stem. A very vigorous variety and heavy propagator. This has been one of the leading cut flower varieties but now that Picardy is down to commercial prices it doesn't sell as well as formerly but there still is a place for it. Too late for the northern tier of states though large bulbs should produce blooms anywhere in the U.S.

Bill Sowden ★★★ (FALLU) (Dec) (Com) Immense massive somewhat ruffled deep blood red flaked darker. 5-6 open. A very beautiful variety of about the same color class as Commander Koehl. Personally I like it better than Koehl and it is a somewhat better grower but does not make so tall a plant. Fine for the home garden and florists should use it more than they do.

Bit o' Heaven ★★★★★ (CROW) (EX) (Com) Flaming orange with yellow throat. Tall straight vigorous plant with 9-12 open on a spike of 20-26 buds. Not large but very distinctive and showy. The best commercial and exhibition clear orange. Have a lot of fine reports on this variety and I am sure it will become one of the most popular orange varieties for any purpose.

"All your Palmer varieties turn out for me in line with Picardy."
—C. H. COFFIN, Arkansas.

"I thought I should write and tell you the wonderful success I had with my glads this year. They were beautiful. I was so thrilled with them and such a lovely variety."
—MRS. I. K. HILLMAN, Utah.

Black Opal ★★★½ (ERREY) (Ex) Beautiful deep red of the same color class as Rewi Fallu. 10 medium size well placed blooms open on very tall straight spikes. A fine variety. Bound to become popular.

Bleeding Heart ★★★ (BROWN) (Ex) (Com) (82) White tinted light pink with large red blotch. Tall straight spike with 8-10 medium large perfectly placed blooms open. Strong grower and propagator. The cut flower growers are just waking up to the value of this variety. I am getting inquiries for it in large quantity now from the commercial men. A fine thing. Said to do well in Florida.

Blue Admiral ★★★ (CHRIST) (Dec) (Com) Dark blue about the same shade as Pelegrina. Not so many open as the latter but a little better color and straighter stem.

Blue Beauty or Blue Schonheit ★★★ (PF) (Ex) Light blue slightly darker toward the edge. Large wide open round flowers. Good strong grower. A nice blue.

Blue Danube ★★★½ (PF) (Ex) (Com) (80-85) Beautiful medium light blue. Tall grower with 6-8 medium large flowers open. Stems do not crook but are inclined to be a little lippy. Considered one of the best commercial blues.

Blue Wonder ★★★ (BOTH) (Ex) Tall strong growing light blue of large size with up to 12 open at a time. Don't know of another blue that opens as many at a time as this.

Blushes of Cream ★★★½ (K) (Dec) (Com) (88) Light creamy pink with canary yellow throat. 5-6 open. Nice delicate color. A good cut flower.

Brightside ★★★ (PRESTGARD) (Dec) (Com) Very early. Canary yellow flushed pure apricot in upper throat with tips of deep orange. Tall straight habit. 4-6 medium size blooms open. A very pretty variety and well liked by the florists. Very decorative and being so very early it is in big demand.

Caesar ★★★ (DEGROOT) (Dec) (Com) Beautiful light red shading darker toward the center. Large round flowers. A very brilliant and pleasing color.

Camellia Palmer strain. See page 14.

Cardinal Prince ★★★½ (K) (Dec) (Com) Clear cardinal red. An old variety still well liked.

Carillon Palmer strain. See page 12.

Champlain Palmer strain. See page 14.

"Bulbs arrived O. K. and I wish to thank you for the extras. Have always been very well satisfied with bulbs received from you. In spite of the extreme drought last year I had beautiful blooms and a fine increase."
—E. J. GITTER, Wis.

"I was very much pleased with bulbs you sent me last spring. A number of people wanted to know where I obtained such beautiful glads. Everyone who saw them were just crazy about them."
—MISS L. A. HORNER, Mich.

Chas. Dickens ★★★½ (PF) (EX) (Com) Early. Purple violet. Tall strong grower with long spike of bloom. This and Troubadour considered the best commercial purples.

Cherokee Palmer strain. See page 14.

Clarion ★★★½ (CROW) (Dec) (Com) (70-80) Tall, early clear deep yellow. Good size blooms well placed and spaced. One of the best early yellows.

Colossus ★★★½ (MITSCH) (Dec) (Com) Very early. Rich light pink with a small red feather on a cream ground. Sometimes flecked darker but usually clear. Sometimes 7-8 inches across. Due to its extreme earliness and the immense blooms I look for this to become one of the best commercial varieties. It bloomed a week ahead of anything else I had on my place this past season. I like this so well that I have bought a share of the stock.

Commander Koehl ★★★ (PF) (EX) (Com) (80-85) Large massive clear blood red. Tall straight spikes. Not just the color that the florists want but a beautiful variety and considered one of the best medium reds. Nice for local use but not a good shipper.

Conquest ★★★½ (MITSCH) (Dec) (Com) Midseason. Light salmon pink with cream throat blotch. 5 or 6 open at a time. A very beautiful refined variety. Can't imagine a glad much more beautiful. Good propagator. I have stocked heavily with this one.

Constancy ★★★ (ARENIUS) (Dec) (Com) Second early. Large rose pink with a small darker throat blotch. 5-6 open. A fine commercial variety that should become very popular. Nothing quite so good in its color class at the time it blooms.

Coquette Palmer strain. See page 14.

Coronation Palmer strain. See page 14.

Damaris New introduction. See page 25.

Debonair Palmer strain. See page 15.

Dr. Durr ★★★ (PF) (Dec) (Com) Early cream white somewhat ruffled. 6-8 open. A good early cut flower variety that comes in about the same time as Polar Ice and preferred by some people to that variety.

Dr. F. E. Bennett ★★★ (D) (EX) (Com) (90-95) Fiery scarlet with white lines in the throat. Has been the standard exhibition and commercial light red for many years.

"Last spring was more than pleased the way you filled my order. The small bulbs received from you all bloomed very nicely and were lovely."
—EDW. CIRCLE, Ohio.

"Was very well pleased with the bulbs last year."

—MRS. FRED JOHNSON, N. Y.

Dream o' Beauty ★★½ (ZIMMER) (EX) (Com) Large rose red. A fine color and tall strong growing plant. Good seller in spite of the fact that the two rows of blooms are often too far apart.

Dr. Hoeg ★★½ (PRESTGARD) (Dec) Glistening dark red. Seems to be becoming more popular all the time.

Dr. Moody ★★½ (KINYON) (EX) (Com) (75-80) Second early. Light lavender with fine penciling of a darker shade. Fine spike with many blooms open. A strong grower. Is preferred to Minuet by many growers in the south.

Duna Palmer strain. See page 15.

Early Dawn ★★★ (BRIGGS) (Dec) (Com) (65-70) Early geranium pink. Several large blooms open on a tall spike. Very vigorous grower. In the garden this is a good variety but when forced in the greenhouse it is very much better. Inside it is really fine. Has tall strong growth and a long spike of large flowers. In my greenhouse last year it was really the best of its color for forcing.

Early Melody ★★½ (ARENIOUS) (Dec) (Com) Second early. Pale lavender pink. 6-8 good size blooms open. Well liked by many people. A good commercial.

Early Peach ★★½ (PRUITT) (Dec) (Com) Peach red or a rose blending to ivory in upper throat. Somewhat ruffled. 6-7 wide open blooms on a spike of 14-18 buds. Very nice variety either for the amateur or cut flower grower.

Early Rose ★★★ (JACK) (Dec) (Com) (70-75) Two shades of rose. This variety comes in early and has been very well received by many commercial growers. Personally I don't care for the color but people who should know their business, cut flower growers and the public too like it. Florists have told me that it goes very well in the store. About 99% of the people like it very much and I believe it is going to make a first class cut flower variety. Is also a good forcer in the greenhouse. Strong grower and fine propagator.

Ecstasy ★★ (K) (Dec) (85) Dark cherry red with blotches on all 6 petals. Not large but very odd and distinct.

Edith Mason ★★★ (VAUGHAN) (EX) (Com) (95-100) Large light pink with white throat and white mid-ribs. Vigorous grower. A very beautiful variety either for exhibition or florist use.

Edith Robson ★★★ (BROWN) (EX) (Com) (80-85) Light salmon rose with reddish blotch. 10-12 large well placed blooms open. Very tall vigorous plant with a huge spike of bloom. This is one of my favorites and a fine variety for exhibition or as a cut flower. A basket of these is something to admire.

"I liked Edith Robson better this year, also Margaret Fulton. Excellence was exceptionally good and Wurtembergia was also fine."

—C. E. and L. HUGHES, Ohio.

Ella May ★★½ (CLARK) (Small Dec.) Light rose with creamy yellow lower petals. 4-5 open. Very pretty and distinctive small decorative that I think you will like if you like this type of flower.

"The bulbs I got from you this spring all did fine. Was much pleased with them."

—F. L. SLATER, Mass.

"I want to take this opportunity to tell you what fine glads I had last year from your bulbs. I have been growing glads for several years, just for my own pleasure, but last year I had the finest ones I had ever had. I recommend your bulbs to any one who wants the finest blooms possible."
—MISS EDNA LEE, N. Y.

Eloise ★★★ (DORRETT) (Ex) (Com) Clear dark lavender or orchid with a few dark lines in the throat. Practically a self color. 8-10 medium large blooms open on an ideal spike of 20 buds. A new variety introduced last year but which has been sold on the San Francisco market for several years. Will make a fine late commercial lavender.

"Eloise made nice bloom for us. Should make a good cut flower."

—JOHN R. CANINE, Calif.

"Eloise is a grand glad."

—PETER HERBORN, Calif.

"I surely like Eloise. It certainly is outstanding." —C. E. HUGHES, Ohio.

Emile Aubrun ★★ (LEMOINE) (Ex) (85-90) Bronzy red often overlaid with slate. Large cherry red blotch. Under good conditions this variety will open up 8-12 blooms at a time but late years the heads seem to be rather stubby. A fine variety for hybridizing.

Escort ★★½ (TOWER) (Com) (65-70) Very early ruffled cream white with cream throat. 8-10 or more medium size well placed blooms open with most of the remaining buds showing color. Very early and so should be a valuable commercial white.

Euides ★★★ (ERREY) (Ex) (Com) Ivory white with pink shadings around the edge. 10 or more perfectly placed blooms open on a tall straight spike. A famous variety that has won many awards in Australia. Is said to stand the hot dry weather better than most varieties. A good propagator and destined to become very popular.

Evensong Palmer strain. See page 17.

Excellence ★★½ (K) (Com) (Dec) (69) Large light red with 4-6 blooms open. The earliest large red and the largest early red I know of. Valuable as a cut flower because of its earliness.

Flaming Meteor ★★½ (MITSCH) (Dec) (Com) Very tall straight variety with a long flower head having 5-6 medium large bright red blooms open at a time. This variety has seemed to catch the popular fancy of both the amateur and the cut flower grower.

Frank J. McCoy ★★★ (BRIGGS) (Ex) (Com) Deep pink of medium large size when well grown. Opens 10-12 at a time on long flower head. This is one of the finest exhibition varieties in existence and becoming popular as a commercial. Sometimes some of the blooms are misplaced but for exhibition purposes this can easily be remedied and it doesn't hurt it much as a commercial. Becoming very popular the last few years.

Frascati ★★ (PF) (Com) Introducer's description: "The ground color is a fine rose red shading to lighter rose with carmine feathers on the lower petals. Very long spike carried on a strong stem with florets of striking form. Healthy grower and an outstanding midseason market variety."

Gate of Heaven ★★★ (PF) (Dec) (Com.) Beautiful ruffled deep yellow with greenish yellow buds. Medium height. Very pretty and becoming more popular every year. Considered one of the real good yellows.

"My sincere thanks for the sample Duna. It's almost too exquisitely beautiful for us humans."
—W. W. DELANO, Wisc.

"Palmer glads have turned out to be the most beautiful as well as the best for commercial users and I am trying to combine the raising of same both as a hobby and as a business proposition."
—C. N. GOLDSBOROUGH, Va.

Gertrude Swenson ★★½ (SWENSON) (Ex) Beautiful shade of mauve with a white blotch on the lower petals and a light mauve feather. Medium size but a long straight spike opening up 12 or more blooms at a time. The upper flowers are practically as large as the lower ones. A famous variety but rather slow propagator.

Giant Nymph ★★½ (COLEMAN) (Ex) (Com) (80-85) Large light salmon rose often flaked. For many years has been one of the best commercial and exhibition varieties.

Gladys Clegg ★★½ (SYMONS) (Dec) (Com) Very early. Warm apricot salmon with large velvety maroon blotch. Holds its color in any weather. Due to its extreme earliness and nice color should be a valuable commercial variety.

Gloriana ★★★ (BETSCHER) (Ex) (Com) (85-90) Golden salmon with clear cream yellow throat. An old variety and still holds its own as a fine commercial and exhibition sort.

Golden Brown ★★ (K) (Dec) (72) Mahogany red shading to brown in the center. Medium size. A new and distinct and pretty color.

Golden Cup Palmer strain. See page 17.

Golden Flame ★★ (KINGLSEY) (Com) (Dec) Dark orange salmon with yellowish lip and mid-ribs. Orange feather. Several blooms of heavy substance on tall straight spikes. Stands the heat and sun well.

Golden Goddess ★★★★★ (SAL) (Ex) (Com) Medium yellow with up to 12 medium size perfectly placed blooms open on a very tall spike. When well grown this is the finest exhibition yellow variety in existence. A very vigorous grower and one that I am sure you will like. The first patented gladiolus. Blooms and seed of this variety can be re-sold but the bulbs cannot be.

Green Light ★★½ (PF) (Dec) Midseason. Milky white with a greenish tinge, slightly ruffled, very pretty.

Harvest Moon ★★½ (JACK) (Ex) (Com) Clear medium yellow shading deeper in throat. 6-9 large (up to 5½ inches) usually well placed blooms open. Very tall, strong, husky grower and good propagator. Long flower head on a straight stem. Looks like a coming commercial variety. One that you should surely try.

Hector Palmer strain. See page 17.

Heiligtum ★★½ (PF) (Dec) White with greenish throat. Large blooms. Strong grower. 6-7 open on long spike.

Helena Palmer strain. See page 17.

"My bulbs have given us such joy and we share that joy with our neighbors. Want bulbs for next spring. Most of mine seem true to descriptions and are very large."
—F. E. HARVEY, Pa.



Rosanond



Regent



New Era



Timbuctoo

"I visited the National Glad Show at Akron last August. The weather was stifling hot. I was hot, and the blooms on exhibition showed that they had too much heat. But when I came to the Palmer Section I forgot about the heat. This display of Palmer's originations gave me a vision of what the gladiolus of the future would be. I am strong for the Palmer varieties not only for their beauty but for their sturdy growth and ability to increase."

—E. S. HARTRUM, Ohio.

Helen Wills★★ (SAL) (Com) Medium size cream white. Fine florist flower.

Hercules★★½ (CROW) (Dec) Orange buds opening up into a beautiful distinctive shade of bronzy orange or deep buff. Tall massive grower with long flower heads. 4 or 5 or more open at a time. Not a commercial flower as it doesn't ship well but fine for the garden or local use.

Heritage★★★ (RISTOW) (Ex) (Com) Rich warm pure pink lighter in the upper throat with white mid-ribs and throat. Long spike of bloom with 10 or more open. In warm weather it is inclined to crook and is not nearly so good as in cool weather when it can be really fine.

Hillbilly★★ (TOWER) (Dec) Rose doree overlaid and striped amaranth purple. Large creamy blotch striped and penciled scarlet red. Opens 4-6 large wide open blooms somewhat ruffled. An odd color.

Honor★★★ (KINYON) (Ex) (Com) (80-85) Clear lavender with dusting of self color on lower petals. Opens 6 large well placed blooms of unusually beautiful clear shade. One you should try.

Incense★★½ (MRS. ANNA MILLER) (Dec) The fragrant glad. Pretty medium size pink that has a very pleasing fragrance. Some people say they cannot get the fragrance of this variety but I can assure you that it has a fragrance and if a person cannot smell it there must be something wrong with that person's olfactory organs.

Innovation★★½ (BATH) (Dec) Bronze. This is the nearest to a bronze that I have seen in any variety. 4 or 5 large blooms open. An unusual and distinctive color. The growth is much healthier and better now than it was when I first grew it.

Inspiration Palmer strain. See page 17.

Irak★★★ (MITSCH) Grey sport of Bagdad. Has the good qualities of Bagdad but a clear grey color unlike any other color I have seen in a glad. I think this will become very popular as stock becomes available.

Jalna Palmer strain. See page 18.

Jonquil Palmer strain. See page 18.

J. S. Bach★★★ (PF) (Ex) (Com) Early. Orange salmon, lighter throat. Up to twelve large well placed blooms open. Fine for exhibition and commercial use and also for hybridizing.

"I purchased two fifty cent collections of Bagdad and some bulblets with which you included one large bulb and I was certainly surprised at the number of blossoms I have had on them. I cut 40 spikes last week and have about a dozen in a bouquet I picked for the house Sunday. Nothing seemed to stop their growth and they are certainly sturdy looking plants. I never dreamed they would produce so many spikes of flowers this year."

—MRS. CLARENCE LYNCH, Kansas.

"The small order I placed with you last fall was entirely satisfactory."

—C. B. HAGGITH, Canada.

"I am sending you this order solely on account of the wonderful success I had with your gladiolus bought of you last season. I have never had such glads."

—T. W. GIBSON, Md.

King Arthur ★★★½ (ARENIUS) (Dec) (Com) Immense ruffled rosy lavender of an unusually distinct form and shade. Usually opens only 4-5 blooms at a time but they are so large, heavily ruffled and beautiful that I consider it one of the finest varieties grown for most any purpose. This is one of the most unique varieties in existence. Price is getting down now to where it can be used as a cut flower. The florists all fall for it as does everyone who sees it. If I could have only ten varieties King Arthur would be one of them. Does not propagate quite so fast as some which may be a good thing. Certainly a variety for everyone to grow either for the home garden or for florist use.

"The most beautiful glads that I have seen came from the two free King Arthur. I think this is one of the outstanding varieties on the market today. Everyone that saw it thought it was wonderful. Coronation and Duna were also very good."

—R. I. WOLCOTT, N. Y.

King Lear Palmer strain. See page 12.

Lady Eaton Palmer strain. See page 18.

Lady Winsome ★★★½ (R. M. PALMER) (Dec) (90-95) Very beautiful luminous rosy salmon with small red throat markings. Very large blooms on a very tall strong growing plant. Many open at a time. However the flower heads are so heavy that sometimes in warm weather they need staking.

La Fiesta ★★★½ (SAL) (Dec)(Com) Vivid new shades of orange and yellow. 6-7 well placed medium size blooms on a very tall plant. A distinctive color and I think will become popular.

La Paloma ★★ (DUSINBERRE) (Dec) (Com) (70-75) Second early. Large bright vivid orange of heavy texture. 4-6 open. A good commercial for local use but not a good shipper.

Lavender Queen ★★★ (ARENIUS) (Ex) (Com) Midseason. Clear violet lavender. 6-8 well placed blooms on a tall, straight spike. Vigorous grower, good propagator. Think you will like it.

Lavinia ★★ (PRESTGARD) (Dec) Early large deep pink of heavy substance. 4-5 well placed somewhat ruffled blooms open. Tall strong grower.

Leah Ann ★★★ (GRAY) (Dec) (Com) Early. Beautiful sparkling purple, nearly a royal purple. 6-9 medium size blooms on a spike of 20 buds. Tall, strong grower. A fine one.

Leander ★★ (ERREY) (Ex) Bright orange salmon with purplish magenta blotch. 8-10 open. A fine variety but should be cut in the bud as like orange shades of many species of flowers it is inclined to fade in the sun.

Leschi ★★ (KAYLOR) (Dec) (85) Rich deep maroon red with nearly black blotch. 7 or 8 large well placed blooms open at a time on a medium height spike.

"I have not purchased any bulbs since the last which I bought from you but from my past experience with your bulbs they have done better than from any other grower and I am again sending you my first order."

—S. L. STOLBA, IOWA.

"Again we are looking forward to another year of "Champlain Garden Glads." Nowhere do I see such glads as come from your gardens, and of course enjoy all the compliments for "my" garden."
—MARION S. BRYANT, Maine.

Lila New introduction. See page 25.

Londonderry ★★½ (CHRIST) (Ex) Giant spike and flower of a bronzy orange overlaid with smoke. Touch of carmine red in the throat. Distinctive and beautiful flower and a very tall plant but inclined a little to crook as the flower heads are so heavy.

Lotus ★★½ (PRESTGARD) (Dec) (Com) Large slightly ruffled cream pink. Can be grown very fine but sometimes a little temperamental.

Loyalty ★★½ (AUSTIN) (Dec) (Com) Late midseason. Medium large clear deep yellow. Several open. Strong grower. One of the standard commercial yellows.

Lucifer ★★★½ (ERREY) (Ex) Bright orange with amaranth crimson blotch. A fine color and extremely showy variety. Long spike with 8 or 10 open. Stems do not crook but because of the heavy flower heads are inclined to bend somewhat. If you like the orange shades be sure to try this one.

Lutex New introduction. See page 25.

Magna Blanca ★★ (SAL) (Dec) Large ivory white with creamy yellow throat. Very tall with beautiful large flowers but often crooks rather badly.

Maid of Orleans ★★★★★ (PF) (Ex) (Com) (90-95) Milky white with cream throat. Tall straight plant with up to 8 large well placed blooms open. Universally considered the best commercial white at commercial prices. For exhibition Star of Bethlehem may be better but Maid of Orleans is a fine allround white for most any purpose. You certainly can't do better at the price than to grow this variety.

Major Edward Bowes ★★★ (STEWART) (Ex) (Com) Bittersweet pink with an overlay of slightly deeper tone. Yellow throat. Very tall and strong with up to twelve open. A large basket of this at the Rochester Show last season was very fine.

Mammoth White ★★½ (PF) (Ex) (Com) Immense pure white with just a hint of cream. 5-6 or more immense blooms open at a time. Fine for exhibition and good commercial for local use but does not ship well and a shy bloomer from bulbs smaller than No. 3.

Margaret Beaton ★★★½ (TWOMEY) (Ex) (Com) Midseason. Ivory white with small orange scarlet blotch in throat. 6 or more beautiful large well placed blooms open on a long spike. Very tall strong grower. A beautiful variety that will surely become popular.

"Strong-lovely bloom. The most beautiful bloom in my garden—very much admired."
—J. T. ROBERTSON, Washington.
(Mr. Robertson grows most of the best new ones.)

"I wish to thank you very sincerely for the generous manner in which you have treated me. I am more than pleased with the size and quality of the stock and shall not hesitate to recommend you to my friends."
—E. J. CHAPMAN, N. Z.

"Last year I sent for your mixed gladiolus bulb collection 100 unnamed for \$2.00. When they arrived I found to my happy surprise twenty more bulbs than ordered. Thank you so much.

"My gladiolus were wonderful, far beyond my expectation and I don't know whether I have ever derived more pleasure from a \$2.00 investment."

—JUSTINA DOERKSEN, Calif.

Margaret Fulton ★★★ (OGRODNICHEK) (Dec) (Com) Early. Clear rich soft dark salmon of a distinct shade. 6-8 perfectly placed medium size blooms open. Flowers are somewhat cup-shaped. One of the best early commercial varieties. One everyone should have.

Margaret Peter ★★★ (ERREY) (Dec) (Com) Very early. White flushed pink with large crimson blotch. 6-8 large blooms open. A fine variety for cut flower use or for the home garden. Because of its earliness should make a valuable florist flower.

Marmora ★★½ (ERREY) (EX) (Com) Early gray sport of Emile Aubrun. 8-10 well placed blooms open. Fine variety for exhibition or the home garden.

Mary Ansteen ★★★ (YOUNG) (Dec) (Com) (80) Deep begonia pink. Upper throat creamy blushed pink. Blotch of soft orange red. Color is not greatly unlike Premier Henry but is not so large and is much earlier. It is really a beautiful color and should be useful as a cut flower variety. Bloom 4-4½" across but being round appears much larger than that. 5 open with several showing color. Medium height. Strong grower and good propagator.

Mary Elizabeth ★★★½ (STEVENS) (EX) (Com) (90-95) Beautifully and heavily ruffled white with golden throat. 7-9 medium size blooms open on a long spike. Vigorous grower. One of the most beautiful whites grown. This is just getting down in price now to where it can be sold in quantity and I predict it will become one of the most popular whites grown. Not so large as some but opens so many at a time that it makes a fine showing and no other white has the beautiful ruffling that Mary Elizabeth has. Be sure to try it.

Mary Frey ★★ (GELSER) (Dec) (Com) (75-80) Medium early lavender pink. 8 or more open. A fine early lavender.

Mary Rose ★★½ (ERREY) (EX) Pink overlaid with old rose in the center and toward the outer edges. Fine exhibition variety and should be popular for the home garden.

Maunga ★★ (BURNS) (Dec) Immense pure white. Has won many awards in Australia and New Zealand.

Mauve Magic ★★ (ARENIS) (EX) A distinct and lively mauve shade. Tall strong grower. 8 open at a time.

Mauvette New introduction. See page 27.

Max Reger ★★★ (PF) (EX) (Com) Light lavender blue with darker throat markings tipped white. 8 open at a time. A fine blue that is becoming more popular all the time. Good commercial.

Maytime Palmer strain. See page 18.

"The flowers I had from you last season were most beautiful and greatly admired by all who saw them."

—M. R. HEWITT, N. J.

"The glads which you sent to me at Avon Park, Florida last fall were a great success and were admired by all neighbors. All five Picardy and the Vagabond Prince bloomed and were wonderful."

—SARAH V. BROWNELL, N. J.

Mildred Louise ★★★ (WENTWORTH) (Dec) (Com) (76) Pure strawberry pink blending to yellow in the throat with faint red pencilings deep in the throat. A variety that seems to be very well liked by many growers.

Milford ★★★½ (RIDES) (EX) (Com) Tall light blue with 7 or more large blooms open. A good propagator and strong grower and considered by many to be the best and clearest light blue. In big demand.

"Beacon, a lovely thing. *Milford*, finest blue I have seen. So Big, very fine."
—A. L. WOOD, England.

Minuet ★★★ (COLEMAN) (EX) (Com) (80-85) Beautiful light pinkish lavender. 5-6 or more well placed blooms open. The lavender by which all other lavenders are judged. Has been the leading standard commercial lavender for many years. Sometimes rather hard to propagate and so the demand always exceeds the supply.

Miss Alameda ★★★ (SAL) (Dec) (Com) Deep safrano pink with carmine tongue and feathering. In common language, a beautiful soft light rose with a small blotch. Very pretty and a good commercial.

Miss Bloomington ★★★ (K) (Dec) (Com) (67) Very early tall light yellow. 6-8 well placed blooms open at a time. One of the very best early yellows to be had. Makes a fine florist variety.

Miss Greeley ★★★½ (BRIGGS) (Dec) (Com) Similar to W. H. Phipps in color but slightly darker and three weeks earlier.

Miss New Zealand ★★★½ (JULYAN) (EX) Apricot salmon suffused with rose. Peach color blotch in throat. One of the new mammoth strain. 8 or more immense blooms open. Can be grown wonderfully fine but the color is not so good as Picardy and the flower head is so heavy that it needs staking. The variety is strictly for exhibition or the home garden.

Moorish King ★★★½ (PF) (EX) Immense rich very deep red on a tall stem. A good color but blooms not always well placed and a slow propagator.

Morocco ★★★½ (PF) (EX) Glistening deep red with a fiery sheen seen on few glads. 6-8 good size well placed blooms open at a time. Bulbs inclined to be small but a medium size bulb of Morocco is equal to a large bulb of other kinds. Probably the best low priced dark red.

Mother Machree ★★★ (STEVENS) (EX) (95-100) Smoky lavender overlaid toward the edge with salmon pink. An odd but very pretty smoky variety that is always popular. Color is best when picked in the bud and opened inside. Tall plant with 8-12 medium size blooms open. One of the best smokies.

"The Gladiolus bulbs I bought from you last spring are the best I ever raised in color and in size. I bought special collection No. 1, they are wonderful, all my neighbors claim they are the best they have seen and not only that but you have given me a good count on this order."

—HARRY JAVUREK, N. Y.

"Expect to order more bulbs from you for next year as mine did so well this year."
—EULA SHOVE, La.

Mrs. C. P. Worley ★★★ (WHITELY) (EX) Salmon red with large cream throat. Very tall strong vigorous plant with 8 blooms on a long flower head open at a time. A distinguished looking variety.

Mrs. E. J. Heaton ★★★¹/₂ (HEATON) (Dec) (Com) Tall salmon with creamy blotch. 6 or 8 blooms open. Stands the heat and dry weather well.

Mrs. G. Wade ★★★ (WHITELY) (EX) (Com) Beautiful ruffled light yellow opening up to 10 at a time. Looks to me like a coming yellow.

Mrs. Leon Douglas ★★★ (D) (EX) (Com) Late midseason. Salmon rose striped with scarlet. An old exhibition variety that is still used somewhat but not nearly so beautiful as some of the modern kinds though very large and showy.

Mrs. S. A. Errey ★★★ (ERREY) (EX) (Com) (85-90) Large orange salmon with orange red blotch. 8 or 10 immense blooms open at a time. Fades some in the sun so should be opened inside. Not quite so strong a constitution as some varieties but stock this year looks fine.

Mrs. T. E. Langford ★★★ (CROW) (EX) (Com) (95-100) Exquisite apple blossom pink with a touch of canary in the throat. Stems always straight with 8-10 medium size somewhat ruffled blooms open. A fine shipper as it always opens up perfectly to the tip. A very beautiful and fine variety. I consider it one of the best cut flower varieties.

Mywag Palmer strain. See page 19.

Nadia ★★★¹/₂ Pronounced Nah-dee-ah. (LEFFINGWELL) (Dec) (Com) Small decorative. Upper petals bright salmon with lower petals deep yellow. 8-10 perfectly placed and spaced blooms on a spike of 17 buds. 3½-4 feet high. Blooms 2½-3¼ inches. Very similar to Orange Butterfly, of which it is a seedling, except in color and in the stem which seldom crooks while Orange Butterfly very often crooks more or less. The most beautiful small decorative that I have seen.

Nancy Ann ★★★ (KINYON) (Dec) (Com) (80-85) Pale lavender pink slightly deeper at edge of petals. Creamy blotch. Six or more well placed slightly ruffled blooms on a long straight spike. I believe this will become a very popular commercial variety. Nice clean growing sort. Nancy Ann won first in its class at Sioux City.

Netherland Prince ★★★ (STEVENS) (EX) (Com) Immense bright salmon. Tall, strong grower with 6-8 large blooms open on a long flower head. Sometimes the flower head is so heavy that the stem bends a little but does not crook. Very showy and popular variety.

New Era ★★★¹/₂ (ELLIS) (EX) (Com) Eosine pink blended with LaFrance pink. Soft cream throat. Heavily ruffled. Tall straight spike. Sometimes the two rows of petals are too far apart but in spite of that I consider it one of the most beautiful varieties ever produced.

"I have bought all of my glads from you and they are fine."

—R. V. ROGERS, N. C.

"Had some wonderful glads this summer all bought from you."

—MRS. G. M. CROCKETT, Maine.

Ninth Symphony ★★★ (PF) (EX) (COM) Clear vivid salmon red with a silky sheen. Opens 5-6 or more large wide open flowers at a time. A fine color and looks like a coming variety.

Nyora ★★½ (ERREY) (EX) Rosy salmon with crimson blotch. 6-8 open. Very showy exhibition variety.

Odalisque ★★½ (ERREY) (EX) (COM) Large creamy white sometimes slightly tinted pink with scarlet blotches. Tall strong grower opening 7 or more beautiful blooms. One of the best blotched whites.

Olive Marie Brown ★★½ (PHELPS) Small decorative. Beautiful small orange. Just the kind of a flower that the florists should use. One of the best small decoratives.

Orange Butterfly ★★½ (SAL) (Prim) (EX) (COM) (75-80) Bright orange of heavy substance. 10-12 well arranged medium size blooms open. A beautiful variety and in big demand. Has a tendency to crook a little but because of that habit it can be arranged more artistically. One of my favorite varieties.

Orange Princess ★★½ (DEGROOT) (Dec) (COM) Beautiful salmon orange with small crimson feather. Somewhat ruffled.

Orange Sovereign ★★★ (STEVES) (EX) (COM) Early light orange. Tall plant with a long flower head and opening 8 or more large blooms at a time. Very pretty and have had a number of fine reports on this variety.

Our Selection ★★ (BALL) (EX) (COM) Salmon red flaked deeper. Cerise blotch bordered cream. Medium height but with a long flower head of well placed blooms opening up ten or more at a time.

Paradise ★★½ (PRUITT) (Dec) (COM) Early apricot with narrow line of scarlet in throat. Nearly a self color. Somewhat ruffled. Six or more large beautiful blooms open on a spike of 16-18 buds. A good propagator. When well grown quite outstanding.

Peerless Pink ★★½ (DEGROOT) (Dec) (COM) Deep salmon pink self color. 5-6 large blooms open.

Pelegrina ★★★ (PF) (EX) (COM) Early. Large dark blue. Six or more well placed blooms open with most of the remaining buds showing color. The stem is not so tall and stiff as Blue Admiral but a fine variety just the same. The most popular dark blue.

Pfizer's Triumph ★★½ (PF) (Dec) (COM) Large salmon scarlet. Has been a very popular variety though rather soft and does not stand the heat and bad weather very well.

Phyllis McQuiston ★★★ (STEWART) (Dec) (COM) Mid-season. Large deep glowing shrimp pink shading lighter in the throat. Tall vigorous plant with five or more large blooms on a long spike. An unusual and beautiful shade of pink. In spite of its occasional poor placement think it will go places.

"The flowers I have had from your bulbs the past few years have certainly raised the standard for glads here."

—MRS. J. M. CONRY, Rockwood, N.C.

"The bulbs are the very best I ever grew, in fact they are the best in this section. No one has them any better. People come from all over to look at my glads."

—L. R. VAN SICKLEN, N. Y.

Picardy Palmer strain. See page 19.

Pinnacle ★★★ (ARENUS) (EX) (Com) Rose pink. Very tall straight spike with a long flower head opening 10–12 medium large blooms at a time. Fine for exhibition and should become a very popular exhibition and commercial variety. Fine propagator.

"I have Pinnacle in blossom now with 11 florets open on a spike and about 7 buds showing color. Pinnacle I think is one of the finest glads I have ever seen."
—MISS HELEN BROWN, Mass.

Pirate Palmer strain. See page 19.

Polar Ice ★★★ (PF) (Dec) (Com) Early. Cream white. Several good size blooms open. Placement not always good. Said to be a good forcer in the greenhouse. Is getting more popular every year.

Prairie Gold ★★½ (CORRINGTON) (Dec) (Com) Deep yellow with fine penciling of carmine giving the impression of a very deep yellow. Four or more good size blooms open. Very tall, strong, vigorous grower.

Premier Henry Palmer strain. See page 20.

Primrose Princess ★★ (SAL) (EX) (Com) (95–100) Medium tall clear primrose yellow with lower petals somewhat darker. Long spike of well placed blooms. One of the best commercial yellows among the older ones.

Prof. Van Slogteren ★★½ (ALKEMADE) (Dec) (Com) Beautiful soft rose color of unusual shade. Think you will like this.

Queen Helen II ★★½ (SAL) (Dec) (Com) Late. Light rose with cream blotch. Carmine feathering in throat. Six large wide open blooms on a long spike. Strong heavy growth.

Rapture Palmer strain. See page 20.

Recado Palmer strain. See page 20.

Recovery ★★½ (BLAKE) (EX) (Com) Tall salmon rose overlaid with red. Not quite so clear color as I would like but seems to be getting popular. Tall plant with a fine exhibition spike of bloom. Good propagator.

Red Lory ★★★ (ERREY) (EX) (95–100) Carmine rose with large purplish red blotches. Ten or more large blooms open at a time. Very popular and gorgeously colored dark red.

"I am very enthusiastic about the lovely bulbs you sent. Some No. 6 bulbs I planted late last summer are full of lovely long spikes."

—MRS. HAYWOOD SMITH, N. C.

*"Our gladiolus were a source of real joy last year.
"Thank you for an excellent product and excellent service."*

—MRS. T. PITRE, Mass.

Red Phipps ★★★ (BRIGGS) (Ex) (Com) Late midseason. Unusual shade of light red. Medium tall plant with long flower heads. This variety is fast gaining precedence over Bennett. Considered one of the best cut flower reds.

Regent Palmer strain. See page 21.

Reverie Palmer strain. See page 21.

Rewi Fallu ★★★½ (FALLU) (Ex) Early. Deep blood red. Immense massive blooms on a tall straight spike. Opens 6-8 or more wonderful blooms at a time with most of the remaining buds showing color.

This is not a commercial color but is one that every amateur will enthuse over as the flowers are so large, massive and beautiful. By all means try Rewi Fallu if you like the deep reds. A real wonder.

"If Rewi Fallu doesn't become the most popular red variety that has ever been brought out then you can put me down for a darned poor guesser."

—F. B. CHASE, N. H.

Rideau Palmer strain. See page 21.

Rima ★★★½ (MITSCH) (Dec) (Com) Lilac pink with cream throat. Up to seven large well placed blooms open on a tall spike. A beautiful variety that should become very popular as a commercial sort and the only one I have seen that I think has a possibility of displacing Minuet.

Roderick Dhu ★★★½ (STEPHEN) (Dec) Immense rose pink with darker blotch. Rather light substance but a beautiful variety and very well liked.

Roi Soleil ★★ (VELTHUYS) (Dec) (Com) Extremely early large light yellow with red lines in throat. Good early cut flower.

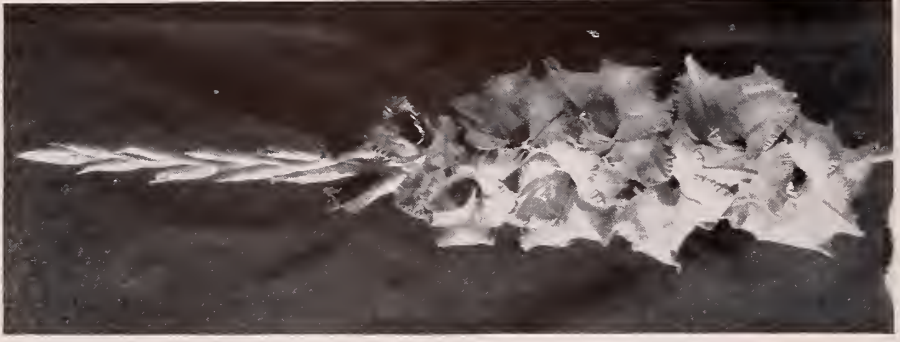
Rosamond ★★★½ (WRIGHT) (Ex) (Com) Rose scarlet with soft darker blotch. 7-9 or more good size well placed blooms open on a spike of 15-18 buds with most of the remaining buds showing color. A fine commercial variety just introduced last year. Very good shipper and keeper. I have seen magnificent spikes of this variety and I believe it is destined to become a very popular commercial.

Rose Marie Pfitzer ★★★ (PF) (Ex) Ruffled white tinted pink. A peaches and cream color. Varies somewhat in color according to growing conditions. Eight or more large blooms open at a time. When well grown a beautiful variety and fine for hybridizing.

Rose Standish ★★★ (KINYON) (Dec) (Com) Beautiful clear light rose pink of a distinctive shade. 5 or 6 wide open blooms of good size on a straight slender spike. Becoming increasingly popular every year. Fine basket gladiolus. Rose Standish won first at Washington Show.

"I was very much surprised and happily pleased to receive such good count and so many worthwhile extras. I have never grown any of the varieties you sent as extras."

—W. E. METCALF, Ind.



Zuni



Edith Robson



Amrita

"Please convey to Mr. Palmer, my congratulations for the excellence of Picardy, it is the outstanding Glad, of my garden, which includes a collection representing nearly a quarter of a century of Gladiolus, and for yourself, I wish to hand you my compliments; if the balance still to bloom are up to the King Arthur now blooming, then you deserve this bouquet.

"I find deep planting, rich soil, potato phosphate and not too close planting, have produced exhibition type Glads for me."

"Our results with your bulbs were superb."

—DAVID B. COOK, N. Y.

Rose Wings ★★★ (CROW) (Dec) (Landscape) (75-80) Medium size decorative. Rosy carmine deepening toward the edges and with a deeper velvety lip. A fine gold line on the edge of the petals. 4-6 blooms open on a straight slender stem of medium height. The foliage is dark green and the stems are tinged with dark rose. A very beautiful variety and I am sure you will like it if you like the medium decorative type.

Rosex Palmer strain. See page 21.

Royal York Palmer strain. See page 21.

Rusty ★★ (KINYON) (EX) (COM) (75-80) Yellow overlaid with hair-lines of scarlet giving the effect of deep orange. Yellow blotch on lower petal. Several large blooms open on long spike. Fine autumn color. Should be popular with the florists and also fine for the home garden.

Sahara Palmer strain. See page 22.

Salbach's Orchid ★★★ (SAL) (Dec) (Com) Might be called a pink Minuet. Similar to it but a little more of a pink shade. Several somewhat ruffled blooms open. A beautiful variety.

Salmon Emperor ★★½ (ROOZEN) (Dec) (Com) Ruffled salmon orange with dark feather. Very pretty. Somewhat similar to Pfitzer's Triumph.

Sandra Palmer strain. See page 22.

Sarasate ★★½ (PF) (EX) Early midseason. Dull madder-red with darker red blotches and stripes. Has a slaty sheen.

Sari Palmer variety. See page 12.

Schubert ★★½ (PF) (Dec) (Com) Creamy yellow with vivid scarlet blotches. Showy and well liked by garden visitors.

Shirley Temple ★★★½ (PRUITT) (EX) (COM) Immense heavily ruffled cream with cream yellow throat. 6-9 well placed large massive blooms on a very long spike. Very tall. In spite of a slight tendency to crook I consider this one of the finest varieties on the market and bound to be popular. Good propagator. This variety has had a lot of well deserved publicity and is bound to sell well for a long time. Every grower should have it.

"I ordered your labeled collection No. 11 in the winter and have never enjoyed any flowers as much as I did these."

—MISS J. C. GLADNEY, Miss.

"The glads which I have had from you before have been fine."

—MRS. W. W. DUNBAR, Mich.

"I would like to take the opportunity to express my sincere appreciation for the fine bulbs I received from you last spring. I had wonderful blooms from the small size bulbs in spite of the fact that we had no rain from June 2nd to August 10 and I had no facilities for watering. Bagdad and Picardy were exceptional and Pelegrina created a sensation around here. It stood up well under intense heat which reached 112 degrees in the shade."
—CARL C. HEISE, Ill.

Silversheen ★★★ (SYMONS) (Ex) (Com) Glowing salmon pink with white tongue on lower petals. Tall, strong grower and a fine exhibition variety.

Simcoe ★★★ (VICKERS) (Dec) (Com) Light purple somewhat flaked darker. 6-7 well placed medium size blooms with as many more showing color on an always straight spike. Fine shipper. One of the best purples.

Smiling Maestro ★★★ (CHRIST) (Ex) (Com) Deep salmon rose flaked darker. 6-8 or more immense blooms open. Very showy and I am sure you will like it.

So Big ★★★ (KINYON) (Ex) (Com) (80-85) Very large deep lavender rose pink with violet feather on lower petals. Six or more open at a time. Can be very fine.

"I saw the glads the last two years at Bay City Glad show and thought So Big was the most beautiful glad of the show."
—ARTHUR BUTTER, Mich.

Solveig ★★★½ (DECORAH) (Dec) Late. Immense heavily ruffled snow white blooms with small cerise blotch. 5-7 open. This variety has been a rather slow propagator but is growing better the last year or two. Can be grown very fine.

Sonatine ★★★½ (PF) (Dec) (Com) (90-95) Light pink often flaked darker. Small diffused red blotch. 4 or 5 very large blooms open on a tall always straight stem. Nice commercial.

Southern Cross ★★ (WHITELY) Clear medium red. Six or more large well placed flowers open at a time.

Spray of Gold Palmer strain. See page 22.

Star of Bethlehem ★★★★★ (PF) (Ex) (Com) Very large cream white with 6-8 well placed blooms open. Can be grown wonderfully fine. Last year a small quantity sent to the New York flower market brought 30c a dozen premium over Maid of Orleans. This variety can be grown probably about as fine as any white variety in existence.

"One of my Star of Bethlehem that I got from you was voted the most outstanding glad in the show and that was only from a medium sized bloom so I do not know what to expect from a large bulb. The ones I had were about five feet tall.

"I must say that I am very much pleased with all that I received from you. I think every one bloomed except one."
—J. K. McCLURE, Canada.

Stuttgardia ★★★½ (PF) (Dec) (75-80) Bright orange red. Strong sturdy grower and a good seller.

Sultan ★★★½ (CROW) (Ex) (Com) Deep rose. 6-8 large ruffled blooms open with several buds showing color. An unusual shade and well liked.

"In regards to the bulbs I got from you last year I cannot state in words my thanks to you for your generosity and the quality of your bulbs and bulblets. They all bloomed gorgeously and I think Duna is my favorite."
—AMOS J. SUTTELLE, Pa.

"Was very well pleased with your bulbs last year. Won several first prizes in the local fall flower show."
—L. E. HARVEY, Mich.

"Thanks for the GRAND collection of glads you sent me last year. One could not compare all the pleasure that I received as a beginner in the same phrase with dollars and cents."
—WM. J. NEVINS, N. Y.

Sunset Cloud ★★½ (STEVES) (Dec) (Com) Early midseason. White overlaid with and shaded light rose pink. Several good size blooms open at a time. Should make a fine commercial.

Sunshine Girl ★★ (STEVENS) (Dec) (82) Clear geranium pink with yellow throat. 7-8 well placed blooms open. Would make a fine commercial if it didn't have a tendency to crook a little.

Susan New introduction. See page 27.

Sword of Mahomet ★★ (ELLIS) (Dec) (92) Large massive smoky brown. 6-8 blooms open. Always popular.

Symphony Palmer strain. See page 22.

Takina ★★★ (BURNS) (Ex) Giant purple. Not a pleasing color but a good exhibition variety. Very good for hybridizing. Always sells well.

Teresa ★★ (CHRIST) (Ex) (Com) Medium size pink with a yellowish tinge and a yellowish throat. Eight or more open. Very pretty.

The Mogul Palmer strain. See page 22.

The Moor ★★ (CROW) (Ex) (80) Eight good size perfectly placed deep rose red blooms open at a time. Slightly ruffled. A nice rose red variety but inclined to have rather short flower heads unless given good culture.

Timbuctoo New introduction. See page 27.

Tip Top ★★★ (PF) (Dec) Bright scarlet with a darker feather. Large flowers on a tall fine spike. If this propagated well it would be one of the most popular reds but sometimes it is difficult to make the bulbets grow.

Token New introduction. See page 27.

Troubadour ★★★½ (PF) (Ex) (Com) (85) Beautiful clear purple. Tall slender stem with six or more blooms open. To my mind the best commercial purple.

Tunia's Blue ★★★ (BOTH) (Ex) Tall, strong grower with up to 7 very large, medium blue blooms open at a time. Probably the best large blue.

"The gladiolus order arrived O.K. and I must say that I am more than pleased with the quality and generosity of the count that you gave me."

—H. W. TRYON, N. Y.

"We received your shipment of bulbs today and must say these are the finest bulbs I have ever received.

"I also wish to thank you very kindly for the extra bulbs."

—W. H. McINTOSH, N. Y.

"My order of bulbs came through in fine shape and thanks very much for the fine extras."

—R. W. HUNTER, S. D.

Tunia's Triumph ★★★ (BOTH) (Ex) (Com) (85-90) Light orange scarlet. Very large. Sometimes over seven inches across. Heavy texture. 7-9 open. Good propagator. Has won many awards in Australia where it is considered one of the very best. Said to be fine for hybridizing.

Uncas ★★★½ (WEBSTER) (Ex) Dark coppery orange with reddish feather tipped yellow in the throat. Eight large perfectly placed somewhat ruffled blooms open. 17-20 buds on a tall, strong growing plant. Does not burn in the hottest sun and opens well to the tip. Should become a fine variety for exhibition or the home garden.

Vagabond Prince Palmer strain. See page 23.

Wasaga Palmer strain. See page 23.

Winged Victory ★★ (BRIGGS) (Dec) Immense light rose. Very broad but not very high. Shaped something like the front view of an airplane.

Wurtembergia ★★★ (PF) (Dec) (Com) Late. Immense fiery scarlet with cream white throat. Grows very tall and always straight. The most brilliant red I know of. Fine either for exhibition or for commercial use or for the home garden. 4-5 immense blooms on a flower head of 16-22 buds.

Yvonne ★★★ (KRELAGE) (Ex) (Com) (78) Blush white or very pale pink with soft cerise blotch in the throat. 6-8 large blooms on a tall, strong growing plant. A very fine variety either as a cut flower or for exhibition.

Zauberflote ★★★ (PF) (Dec) (Com) Peach rose with vivid reddish blotch. Tall, strong growing variety with several large blooms open.

Zuni ★★★½ (MITSCH) (Ex) Very richly colored smoky. A combination of salmon and slate with a slight feather of light orange salmon. Up to ten well placed medium size blooms open on a long flower head. Tall growing variety. Very unusual and bound to become extremely popular with anyone who likes the smokies.

"The bulbs I got from you were the best I ever got and the over count was particularly appreciated."

—MRS. AMOS DAVIS, Ore.

"The glads I got from you last year were wonderful. No one here ever saw anything like them. Many of them grew over six feet tall and the blooms were wonderful. They were the talk of the show in town and at the fairs."

—A. W. TYLER, Maine.

"The gladiolus bulbs we bought from you last year were the best we ever raised and each flower was perfect. They gave us so much pleasure that we want to indulge in another collection."

—DOROTHY JUNGE, N. Y.

"First let me tell you how much I enjoyed the glads that I received from you last year. They exceeded all expectations."

—MRS. T. J. FARR, Tenn.

"I was delighted with the splendid flowers I had from your unlabelled collection last year. Now I want more."

—MILDRED L. EDWARDS, N. Y.

GLADIOLUS SEED

Growing glads from seed is most fascinating. Let me dispel any fears you may have about the seeds not germinating, because they will sprout more easily than bulblets, and under good conditions it is not unusual to harvest bulbs one inch in size and larger. Full directions for planting are on each packet.

This year the price has been reduced and the number of crosses increased, which will enable you to not only purchase more for your money, but have a larger selection from which to choose.

One thing which may not be common knowledge is, that each seed will produce a different flower. For example, if there were 2,000 seeds of cross No. 3729, each one, while it might resemble the parents when it bloomed, would be separate and distinct, one from the other. Your seedlings, therefore, if they are good, can be regarded as your own, and no one else, even though they purchase seed of the same cross, will have a duplicate of yours.

Be sure to order some seed this year and get your share of thrills, when the seedlings bloom.

GROUP A

- | | |
|---|--|
| 3729 Goldlack x Picardy | 3776 Allegro x Blue Beauty |
| 3734 Yellow Seedling (G. Eagle x Clarion)
x Royal Gold | 3779 Maid of Orleans x White Triumphator |
| 3742 Apricot Glow x Rosemarie Pfitzer | 3781 Red Phipps x Sonatine |
| 3758 Apricot Glow x Royal Gold | 3782 Smoky Seedling x Sarasate |
| 3761 Purple Glory x Picardy | 3786 Salbach's Orchid x Picardy |
| 3765 Maid of Orleans x Green Light | 3789 Blue Admiral x Blue Beauty |
| 3769 Miss New Zealand x Rainbow | 3717A Frascati x Margaret Beaton |
| 3771 Apricot Glow x Rainbow | 3745A Milford x Blue Beauty |
| | 3757A Alchemist x Golden Goddess |

Package of 15 seeds for 25c

Package of 35 seeds for 50c

GROUP B

- | | |
|---------------------------------------|---|
| 3708 Alchemist x D. O. X. | 3713A Paul Grampel x Vagabond Prince |
| 3712 Jonkheer Van Tets x White House | 3715A Erica Morini x Pensacola |
| 3714 Joyful x Goldlack | 3720A Mrs. Anna Pfitzer x Golden Goddess |
| 3724 Coryphee x Joyful | 3731A Tunias Triumph x Picardy |
| 3728 Champlain x Jos. Haydn | 3732A Beacon x Tunias Triumph |
| 3730 Mayflower x Joyful | 3736A Kassel x Beacon |
| 3731 Sussex x Goldlack | 3728A Duchess of Kent x Beacon |
| 3732 Schwabengirl x Sussex | 3740A Golden Goddess x Rosemarie Pfitzer |
| 3735 Rosemarie Pfitzer x Sussex | 3742A Pfitzer's Triumph x Red Phipps |
| 3748 Vagabond Prince x Ninth Symphony | 3747A Dark Red Seedling x Duchess of Kent |
| 3749 Sonatine x Picardy | 3750A Rosemarie Pfitzer x Moorish King |
| 3759 Rosemarie Pfitzer x King Arthur | 3751A Purple Glory x Moorish King |
| 3766 Erica Morini x Miss New Zealand | 3752A Moorish King x Picardy |
| 3770 Rainbow x Nadia | 3769A Ice Queen x Snow Princess |
| 3777 Max Reger x Picardy | 3772A Mrs. Anna Pfitzer x Shirley Temple |

Package of 15 seeds for 50 cents.

Package of 35 seeds for \$1.00.

GROUP C

- | | |
|---|--|
| 3719 Snow Princess x Euides | 3706A Meerscham x Picardy |
| 3720 Royal Gold x Green Light | 3711A Rosamond x Paul Grampel |
| 3722 Picardy x Margot Brunings | 3722A Purple Glory x Ramsay MacDonal'd |
| 3740 Jonquil x Green Light | 3723A Zauberflote x Miss Woodstock |
| 3750 D. O. X. x Royal Gold | 3726A Summerwealth x J. S. Bach |
| 3778 Schwabengirl x Vagabond Prince | 3727A Rosemarie Pfitzer x Rosamond |
| 3780 Rosemarie Pfitzer x Blue Admiral | 3728A Sarasate x Sandra |
| 3788 Blue Beauty x Champlain | 3733A Admiral x Tunias Triumph |
| 3791 Nadia x Frostpink Ornatius | 3753A Van Tienhoven x Paul Grampel |
| 3798 Vredenburg x Maid of Orleans | 3762A Purple Beauty x Chas. Dickens |
| 3702A Golden Goddess x Royal Gold | 3766A Shirley Temple x Rosemarie Pfitzer |
| 3703A Rosemarie Pfitzer x Vagabond Prince | 3767A Red Giant x Tunias Triumph |
| 3705A Paradise x Meerscham | 3779A Bit of Heaven x Meerscham |

Package of 15 seeds for \$1.00

Package of 35 seeds for \$2.00

FRAGRANT CROSSES

- | | |
|--------------------------------------|---------------------------------|
| 3721 Incense x J. S. Bach | 3795 Allegro x Mibloom |
| | Prices of above same as Group A |
| 3703 Cherokee x Mibloom | 3715 Mibloom x Incense |
| 3704 Mibloom x J. S. Bach | 3755 Assam x Incense |
| | Prices of above same as Group B |
| 3787 Fragrant Seedling x Incense | 3716A Margaret Beaton x Incense |
| 3714A Brightside x Fragrant Seedling | |
| | Prices of above same as Group C |



Bit o' Heaven



Mrs. Langford



Shirley Temple

"Here I am again. I must say that I have been completely satisfied with the bulbs purchased from you during the last three years, so I cannot let this year go by without adding a few more to my collection.

"The No. 27271 you sent me as an extra sent up two shoots and I had two perfect spikes. I was immensely pleased with it." —C. W. MOORE, New Zealand.

Spray your Glads

By all means disinfect your bulbs before planting with some good disinfectant. Rototox is used successfully by many growers. But as thrip may come in from outside sources it is well to be on the safe side and spray the plants regularly once a week from the time they are a few inches high. For this purpose Rototox seems to be gaining ground all the time. Many people who were nearly discouraged by having thrip every year now are growing them entirely thrip free. We have a great many testimonials from people all over the country. Rototox is not only deadly to thrip but to most other garden pests also.

The time has passed when you can put seeds or bulbs in the ground and just leave them and not expect to do anything but cultivate them. Most everything nowadays has to be sprayed. Roses are probably the most popular flower in existence but few people can grow good roses without spraying them. Why not spray glads also and be sure of beautiful bloom.

If you will send to the Rototox Company, 813 Yale Street, East Williston, New York they will send you free information on their treatment of glads for thrip. I do not sell Rototox myself but you can get it direct for cash from the manufacturers. The prices are as follows prepaid.

Trial oz.....	\$.35	1 Quart.....	\$3.00
8 oz.....	1.00	½ Gallon.....	5.00
1 Pint.....	1.75	1 Gallon.....	10.00
		5 Gallons.....	45.00

Address—Rototox, 813 Yale St., East Williston, N. Y.

If you live in the neighborhood of East Williston it will be much better for you to order the Rototox by mail than to call at the office. The orders are all shipped out the same day the order is received and I think you will get better service by ordering by mail than to disrupt the office routine by calling there personally. Rototox is all prepaid.

FLOYD BRALLIAR, Dean
 NASHVILLE AGRICULTURAL NORMAL INSTITUTE
 MADISON RURAL SANITARIUM
 Operated by
 RURAL EDUCATIONAL ASSOCIATION
 MADISON COLLEGE, TENNESSEE

September 29, 1937.

The Rototox Company
81 Yale Street
E. Williston, N. Y.
Dear Sirs:

It is now time that I should report the results we had with the Rototox you so kindly sent us for experimental purposes.

First, I used it on about ten thousand Gladioli as a means of getting rid of thrip. It proves very successful in this. In fact, I will consider it the equal if not the superior of any other treatment we have ever used for this purpose.

Then we used a strong solution in a campaign against silver fish and cock roaches and found it decidedly effective in both instances.

Next we made a strong solution and used it as a fly and mosquito killer; with excellent results.

We have used it on plant lice of various kinds successfully.

I am expecting to use the remainder of this Rototox as a dip in treating Gladiolus bulbs as soon as they are dug and ready for such treatment.

We thank you for making it possible for us to carry on this experimental work. I have taken occasion to recommend Rototox through my newspaper syndicate and have recommended it perhaps a dozen times before my various garden clubs where I have lectured. I feel that it is necessary for me to keep abreast of the times and know what garden materials are best and then recommend such as prove satisfactory without fear or favor.

Yours very truly,

(Signed) FLOYD BRALLIAR

FB:VN

FRANK A. NEITZ, New York:

"A thousand thanks to you for recommending Rototox. It knocked the thrip out about 90% in the first round."

C. A. FISCHER, 312 Prince George Street, Cumberland, Maryland:

"Sprayed Glads, Mums, Roses, and all other plants with ROTOTOX, 1 oz. to 4 gals. of water every 4 days and obtained 100% control. Soaked bulbs in ROTOTOX before planting for 36 hours. To have good, clean and healthy bulbs and all other plants you must spray them and not be stingy with the spray and regularly. I found ROTOTOX to do all that they say and I consider this to be the best spray I ever used and I have used them all."

JAMES A. COWGILL, 734 Blockstone Ave., Connellsville, Pennsylvania:

"Good results spraying Glads, Dahlias, Asters, Marigolds, Snapdragons and grapes. Had the finest grapes ever. Let me suggest just one thing that I feel will help all others and that is to treat all bulbs before planting. This is the secret of your success or failure. I am satisfied that if used as directed, and the Glad bulbs treated before planting and spray of ROTOTOX used as directed, you can secure control of thrip, but unless the bulbs are absolutely clear of thrip eggs all the spray you can use is useless."

Labels. Everyone who grows bulbs under name will want labels. There are many different kinds on the market but I think the best cheap label is a painted wooden one. Unpainted labels do not seem to be satisfactory as they weather and the writing becomes illegible. It is difficult to get good labels but I think the best way is to buy painted labels such as I list below and then get a small can of cheap varnish and a cheap brush and give them a coat of varnish after the names are all written. This will hold them through the season whereas if they are not varnished sometimes the paint will come off and they have to be written over during the season.

The wired tree labels are the cheapest and these can be wired to any ordinary stake. Personally I like the 12" ones as they can be easily read and are better for my purposes. However where you have only a few bulbs smaller ones are perfectly all right.

WIRED TREE LABELS. 3 1/2 x 5/8 inch copper wired. 50 for 25 cents. 45 cents per 100 and 500 for \$2.00, 1,000 for \$3.50.

GARDEN LABELS

6 x 5/8" Same price as tree labels.

10 x 3/4" 25 for 25 cts, 100 for 90 cts.

8 x 3/4" 25 for 20 cts, 100 for 75 cts.

12 x 1 1/8" 25 for 35 cts, 100 for \$1.25.

LABELS NOT POST PAID

Evermark Pencil 15 cents each.

For those who want a higher class label without regard to price I recommend the one below.

CLEAR-VIEW

(Trade Mark)

DOUBLE STAKE PLANT MARKER

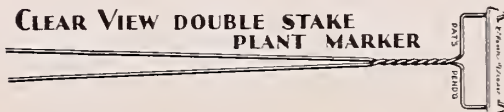
(Protected by pending applications for patents)

Label Always Face-up—Read Without Stooping

This unique marker offers these radical and exclusive new features:

1. Double spring stakes, pushed into ground at an angle, hold it firmly. Cannot turn.

2. Weatherproof pyralin label—3 5/8 x 3/4 inches—is held *face-up*. Easily read without stooping. Name of plant is written on label with ordinary soft pencil, or rainproof pencil. Remains legible indefinitely.



Handsome and practically indestructible. Its thin silhouette improves the appearance of any garden. Length 26 inches.

PRICES \$2.00 PER DOZEN. \$14.00 PER 100.

Bags for Disinfecting.

For your convenience I am offering bags to disinfect your bulbs in. These will last for several soakings and can be kept two years or more.

Prices postpaid

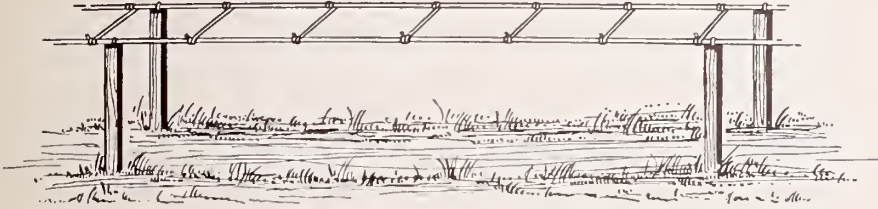
Size A to hold up to about 5 or 6 large bulbs, 2½ cents each.

Size B to hold up to about 25 large bulbs, 3½ cents each.

Size C to hold up to about 1 peck of bulbs, 5 cents each.

Size D to hold up to about 1 bushel of bulbs, 10 cents each.

Horticultural Wire Fencing



Here is a wire support for glads that many growers have liked. This support consists of two parallel strands of wire seven inches apart and has cross wires about every six inches. This wire is simply tacked on to the tops of stakes driven into the ground. You can have them any height you want but for glads about eighteen inches is a good height. This might be too high for some short varieties but should be high enough for most kinds. Of course for very tall growing varieties that are inclined to crook the wooden stake is the best support but where glads are planted fairly shallow so as to get the best increase a wire support of this sort is very useful. It keeps the plants right up straight and there is no danger of them falling over into the row. It can be used many years.

Price for a full roll of 500 feet is \$3.00 f.o.b. Joilet, Illinois. For less than a full roll price is 2 cents per foot f.o.b. Burlington. No orders taken for less than 25 feet.

"Bulbs I got from you last year and other years through Mr. MacPhail were very satisfactory."

—H. V. SMITH, Farnham, Que.

"I like the Duna very much."

—MRS. C. M. SWANGO, Miss.

"This was a very satisfactory collection. Enclosed find check to repeat it and double it."

—MRS. M. S. OLMSTED, Pa.

"A neighbor sent for your unlabeled collection last year and I thought they were the most beautiful gladiolus I ever saw."

—MRS. R. G. WILSON, Pa.

"Was delighted with those ordered last spring."

—C. E. BAYLISS, N. Y.

"I regard your bulbs as the best I have ever seen and from the blooms produced feel sure they are the best obtainable anywhere."

—GORDON SHEPPERD, N. Y.

"The Palmer strain of gladiolus have the world beaten to a finish."

—J. G. THOMAS, La.

"Constancy, Edith Robson, Dr. Bennett and Picardy were very good last year."

—JAMES NABB, Pa.

BOOKS YOU SHOULD HAVE

Below are some books that everyone having a garden should own. I can take your order and have them sent direct from the Publisher.

I can secure for you any book on any garden subject. **SEND FOR COMPLETE CATALOG.** Add 10 cents per book for postage.

Gladiolus. by F. F. Rockwell. Recommended as "the best brief guide on gladiolus growing." It tells how to plant, fertilize, and cultivate; how to grow from seed or bulbets; how to harvest and cure; how to handle for cut flowers; and every other detail needed for success with this popular flower. 45 illustrations, 79 pages. **\$1.25**

Gladiolus Breeding, by J. A. Kemp. A trustworthy guide of 12 pages for the experimenter in the successful breeding of gladiolus. The various operations are described in plain, everyday garden language. **Postpaid, \$.55**

The Home Garden Handbooks, by F. F. Rockwell. A series of pocket-size books, now nine in number. that it is a pleasure for us to recommend because each volume covers its ground so well and concisely. Use them when your seeds or plants arrive; they will show you how to prepare the soil, plant the seed, or transplant. Carry them out to the garden when you cultivate, prune and fertilize, they will save you many steps and help you avoid disappointments. Each volume has from 30 to 70 illustrations and contains about 90 pages. Strong cloth binding, four-color jackets. Price, \$1.25 per volume. The titles now published are:

Rock Gardens
Dahlias
Irises

Gladiolus
Roses
Peonies

Evergreens
Shrubs
Lawns

WAYSIDE MARKETING

The author of "Wayside Marketing," Schuyler Arnold, after several years of observation and much study on the subject, has written a book that is packed with worthwhile suggestions enabling the wayside stand owner to better marshal his opportunities, abilities and equipment.

Every angle of the situation is covered—location, building of the stand, details of measurement, stock to be offered (flowers, fruits and vegetables) and how to grow it, etc.

132 pages, bound in cloth, in an attractive jacket. \$1.00; postpaid, \$1.10.

How to Arrange Flowers, by Dorothy Biddle. A very fine book by a real artist. Explains how to arrange your flowers artistically. **Postpaid, \$1.10**

1001 Garden Questions and Answers, by Alfred C. Hottes. A wonderfully fine book with a wealth of information covering flower, vegetable and fruit garden. Arranged in the form of questions and answers. This is not to be read for literary effect but to secure a quick answer to any definite question. If there is anything you want to know about the garden, what plants do well in certain places and what do not, construction of walks, garden seats, spraying information, judging scales, etc. be sure to get this book. I don't know of a better book for the amateur. 320 pages, fully illustrated. A new edition that has been 50% revised. **Postpaid, \$2.15**

All About Flowering Bulbs, by T. A. Weston. Written especially for the amateur. This book gives all the information a home gardener requires on the culture of flowering bulbs of all seasons planted outdoors as well as those that do well in the house. This is a very fine book and gives a wonderful amount of information on the subject. **Postpaid, \$2.15**

The Book of Bulbs, by F. F. Rockwell. With this complete and practical book you can get the utmost in beauty from every kind of bulbous plant. Clearly written by one who knows; illustrated with 187 beautiful photographs and instructive drawings. Includes tulips, daffodils, hyacinths, lilies, crocuses, glads, dahlias, peonies, irises, begonias, and scores of other beautiful but not-so-well known bulbs. We recommend it as the best and most complete bulb book. 187 illus., 265 pages. **\$2.50**



ALADDIN
A real wonder glad





● BEACON

VAGABOND
PRINCE ➔

CHAMPLAIN VIEW GARDENS

BURLINGTON • VERMONT