



Georgia's State Parks

**DEPARTMENT of STATE PARKS
HISTORICAL SITES and MONUMENTS**

A. N. MOYE

DIRECTOR





INTRODUCTION



The panorama of Georgia's natural scenery is enjoyed and appreciated each year by visitors from near and far. Tourists from all parts of the United States and from foreign countries have discovered that Georgia offers scenic and recreational inducements unexcelled by her sister states.

From lofty mountain peaks to rolling hill country, to cities and towns of great historical wealth and beautifully groomed farmlands, to the mysterious beauty of age-old swamplands, Georgia is truly a paradise for visitors and residents alike. Much of the natural beauty found throughout Georgia is preserved and maintained by the State for public use and enjoyment as is plainly evidenced by the photographic and descriptive material contained in this booklet. Georgia's system of State parks, extending from border to border, north, south, east and west, offers the finest in natural beauty and convenience for the visitors, as well as ease of accessibility the year 'round.

Several State park sites were selected for their historical background; recreational areas were developed and museums were provided to house relics of a glorious past. Many sites were selected for the beauty provided by nature and Georgia's mountain parks offer the scenic splendor of mountain crags, trout streams, dense forests, with beautiful, crystal-clear lakes spotted here and there.

Boating, fishing, swimming and horseback riding are popular diversions and playground equipment, picnic areas and barbecue pits are provided for family enjoyment.

Several parks offer modern, well-equipped vacation cottages which are available to all visitors at a nominal rental fee.

One of these parks, the Indian Springs State Park, is a popular health resort and is recognized as the oldest State park in the nation.

Whenever you plan your vacation, a journey through Georgia with stop-offs at the many State parks will be long remembered.

Whatever you desire—the cool refreshing mountains and lakes of northern Georgia, the rolling hills and valleys of central Georgia or the exciting coastal areas and swamplands of southern Georgia, you will find them and a State park for your comfort and recreation—in the Empire State of the South.

It is our sincere hope that you, the citizens of our fair State as well as visitors, will enjoy the contents of this booklet and that you will plan a visit to Georgia's State Parks.





An Invitation . . .

We are proud of the progress we have made in the development, expansion and improvement of our State parks during the present administration.

These beautiful parks which we operate in all sections of the state are dedicated to public use and we feel they should be operated for the best interests of the masses of our citizens who use them.

Under this policy we not only have improved all the parks in the state to a great extent but also have developed new sites which long have been adaptable for park purposes.

It is gratifying also to note that many of our state parks are of such rare beauty or else possess such historical significance that they draw visitors from all parts of the country.

At this time I should like to commend the State Park Department and its staff for the painstaking efforts made to give Georgia a system of recreation and beauty spots which afford pleasure each year to a large and steadily increasing number of our Georgia citizens.

Let me invite all our people to take advantage of every opportunity to visit our parks and enjoy the pleasures they can provide in recreation, rest and picnic and outing enjoyments.

Sincerely,

Herman E. Talwodge



Parks Director's Message...

It gives me great pleasure to report once again to the people the progress made in Georgia's great park system.

We are proud of the progress that has been made since the beginning of the present administration but the year 1952 has been by far the most outstanding in the history of the Parks Department.

Some of our parks have taken on entirely different appearances. Many of the parks which were formerly day-use areas now have vacation cabins, others are adding fishing lakes, swimming pools, dance pavilions, and other recreational facilities.

Several new parks will open soon to the public affording more accommodations.

Our parks continue to increase in popularity. Your Parks Department is working diligently to improve and increase facilities. We are proud of this fact because the parks belong to you and we want you to enjoy them.

May I extend to you a cordial invitation to visit your state parks.

Sincerely,

A. M. Moseley

WE'RE ON THE JOB

The State Parks Department has intensified its efforts to make Georgia's Parks System one of the finest and best operated in the country. Not being satisfied to rest on past laurels of achievements, our Engineering Department is carrying out the largest major improvement program in its history. Six entirely new State Parks are being developed and some of these already are equal in facilities to many older State Parks. Plans are under way for the development of other new park areas and older State Parks are being improved with additional major facilities.

Our improvement program is moving along rapidly and the progress is readily noticeable to the many spectators who observe our working crews in action. The following schedule is a brief sketch of the work in progress:

RED TOP MOUNTAIN—BARTOW COUNTY

A beautiful bathhouse and fenced in beach area have been completed. A Marine area complete with boat docks, repair garage and concession building has been completed. Also on the finished list is a superintendent's home, water system and sanitary disposal area.

BLACK ROCK MOUNTAIN—RABUN COUNTY

Under construction is a superintendent's residence, water system, picnic area and sanitary facilities. Plans are under way for a lake and vacation cabins.

FORT YARGO—BARROW COUNTY

On the completed list is a superintendent's residence. Ground clearance is in progress and plans are being made for the future construction of a large lake.

UNICOI—WHITE COUNTY

A picturesque fifty acre lake has been completed and under construction is a bathhouse and trading post, group camps and picnic areas. Plans are under way for vacation cabins.

ELIJAH CLARKE MEMORIAL—LINCOLN COUNTY

A contract has been let for bathhouse and concession building, picnic shelters, grills and docks. A water system is being installed.

ACWORTH AREA—COBB COUNTY

Plans are under way for the immediate construction of a bathhouse and other facilities.

INDIAN SPRINGS—BUTTS COUNTY

Nearing completion is a much needed 100-acre lake, also a new water system. The sanitary system is being revamped and enlarged. Plans are being made for the construction of a bathhouse and other facilities.

A. H. STEPHENS—TALIAFERRO COUNTY

A museum building has been constructed that houses relics from the Civil War days and is now open to the public.

CHEHAW—LEE AND DOUGHERTY COUNTIES

New construction includes a superintendent's residence, additional picnic shelters and a pavilion suitable for dancing and skating.

CLOUDLAND CANYON—DADE COUNTY

A new superintendent's residence, water system, parking area, and an additional day-use area is being constructed.

AMICALOLA FALLS—DAWSON COUNTY

Five vacation cabins, a new superintendent's residence and a service area are under construction.

FRANKLIN D. ROOSEVELT—HARRIS COUNTY

Practically all buildings have been renovated.

JEFFERSON DAVIS—IRWIN COUNTY

A caretaker's residence has been constructed and museum refinished.

KOLOMOKI—EARLY COUNTY

Archaeological investigations are being continued and a group camp which will include a small lake is being constructed.

LITTLE OCMULGEE—TELF AIR-WHEELER COUNTIES

Five new cabins are almost completed.

LAURA S. WALKER—WARE-BRANTLEY COUNTIES

Major ground improvements and general park renovation has been completed here.

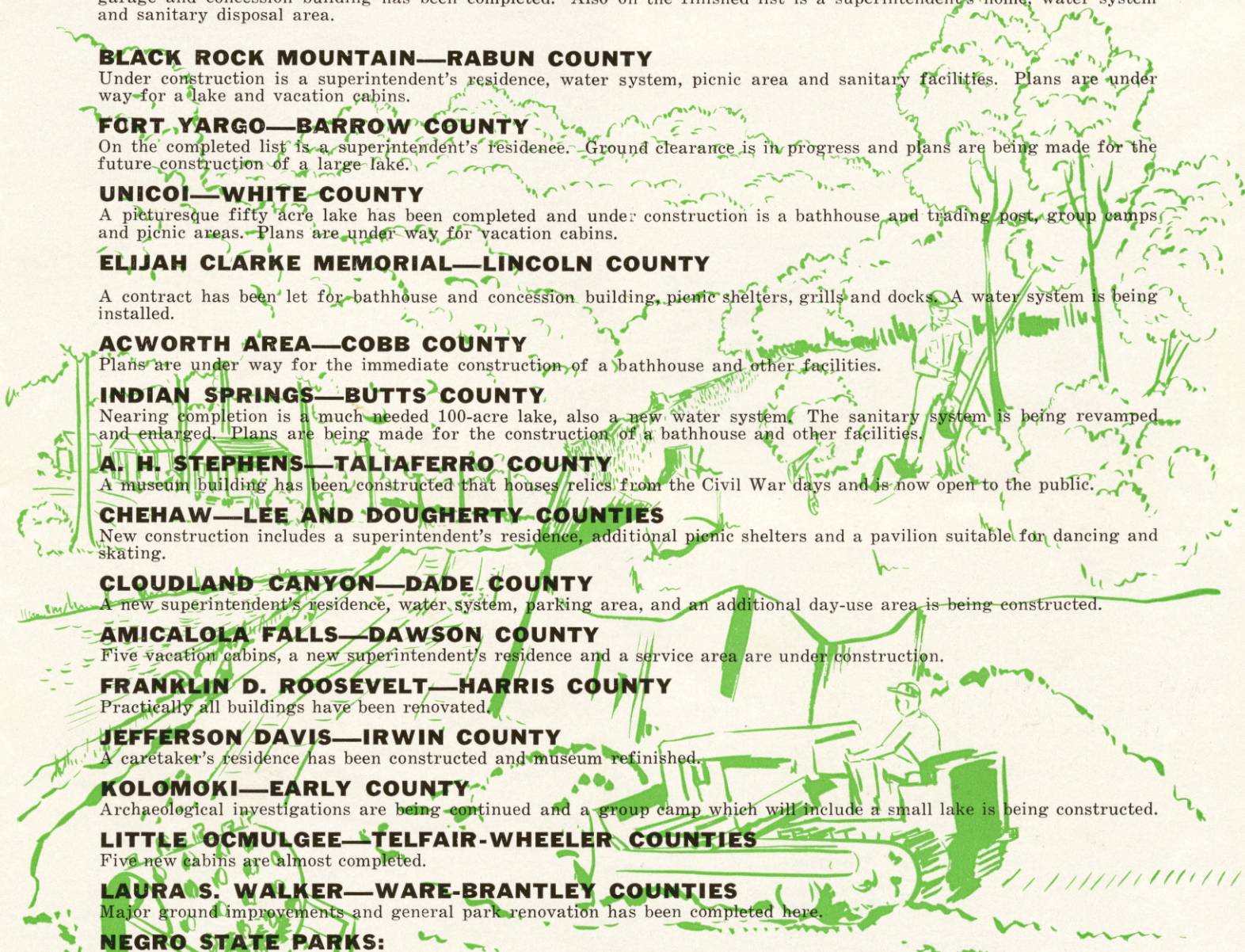
NEGRO STATE PARKS:

GEORGE WASHINGTON CARVER—BARTOW AND CHEROKEE COUNTIES

This is one of the first Negro state parks ever built in Georgia. It is leased to a private individual who operates it under supervision of the parks Department. Recently a bathhouse and concession facilities have been completed. A beach area has been cleared on Allatoona Lake and a section marked off for swimming.

AREA AT GEORGIA VETERANS MEMORIAL

A section of this park is being made into a State Park for Negroes. A water system, sanitary facilities, boat docks, concession stand, picnic areas and a large playground with equipment and athletic field have been completed, ready for use.



CHEHAW *Park*

This six-hundred acre park, named Chehaw after a famous tribe of Indians, is located three miles north of Albany off of Old U. S. Highway 19 on State Highway # 91. This beautiful site contains almost a jungle growth of large trees festooned with Spanish Moss along the winding trails. It is well-equipped with picnic shelters, playground equipment, barbecue pits, concession building and dance pavilion. Although primarily a day-use area, it is one of the most frequented parks in Georgia. Chehaw is open the year round with a resident superintendent in charge at all times.



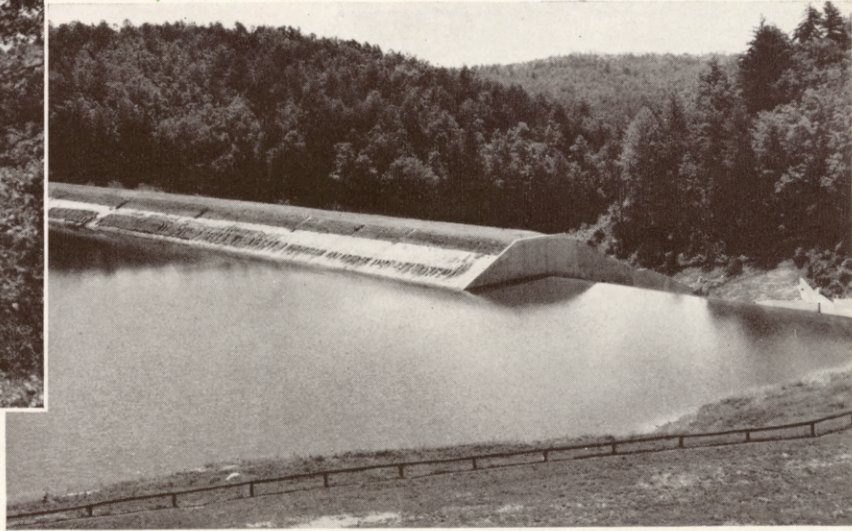
UNICOI *Park*

This park is one of the latest, started in 1949, and just recently was named Unicoi. It is located in Northeast Georgia near the towns of Helen and Robertstown and consists of 1800 acres.

A saucer-shaped green valley at the foot of Tray Mountain has been converted into a beautiful 50-acre lake which will be stocked soon with a variety of fish.

A youth camp, concession stand, beach areas and bathhouse are being constructed at Unicoi. Plans for vacation and overnight cabins are in the process of being completed.

Unicoi promises to be one of our most enchanting mountain state parks offering to the public, in addition to cool breezes, fishing, boating, swimming, picnicking, hiking and an abundance of beautiful mountain scenery.



VOGEL STATE *Park*

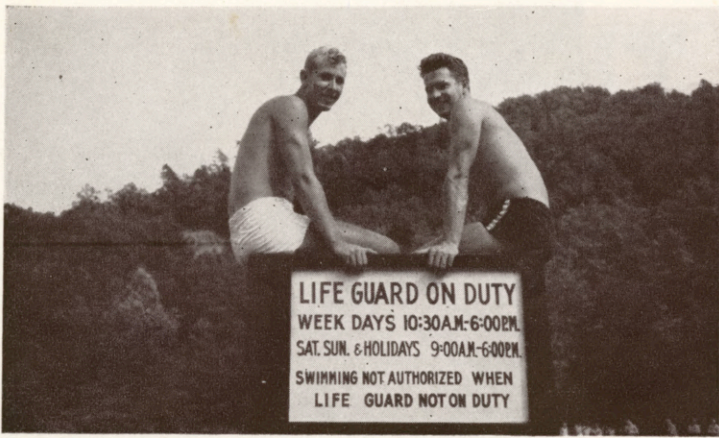
Consisting of 140 acres of some of the most beautiful scenery in Georgia, Vogel State Park is located in the Blue Ridge Mountains of North Georgia and in the heart of the Chattahoochee National Forest. Vast forests surround Vogel Park and through these densely wooded slopes and valleys the park roads and trails lead to inspiring scenes such as beautiful Helton Falls, the panorama from the summit of Blood Mountain and the Magnificent view over Blood Mountain Gorge.

There are twenty-seven cabins of rustic design furnished with necessary modern equipment for housekeeping including kitchens equipped with electric stoves, refrigerators and hot water heaters.

Another attractive feature of Vogel Park is Walasiyi Inn, a picturesque stone Inn that has overnight accommodations for thirty guests and offers excellent meals three times daily at reasonable prices.

One of the feature attractions is Lake Trahlyta which covers forty acres and offers fishing, swimming and boating plus a beautiful beach area, bathhouse and concession building.





ALEXANDER H. STEPHENS *Park*

Alexander H. Stephens Memorial State Park is located in and near Crawfordville. This park is very near the old Georgia Railway between Atlanta and Augusta, is 68 miles from Augusta and 110 miles from Atlanta. This park, as its name implies, was established as a memorial to the vice-president of the Confederacy, Alexander H. Stephens. Principal feature of the park is Liberty Hall, Stephen's old home-place, which has been restored with the original furnishings.

The park also contains a group camp area consisting of 937 acres with facilities sufficient to care for 96 campers plus counselors and other camping staff. This area is available to organized groups of boys or girls.

Still another feature of Alexander H. Stephens is a 238 acre area containing a large lake which provides swimming and boating. In this area also picnicking and hiking are very popular.

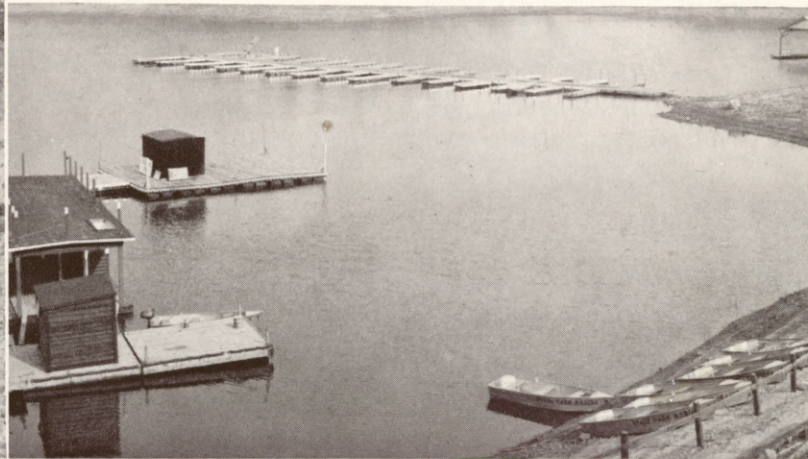


ALEXANDER H. STEPHENS

RED TOP MT. Park

Red Top Mountain State Park consists of 1,457 acres and contains a modern bathhouse and concession building just off a beautiful beach area on the shore of Allatoona Lake. An area has been marked off for swimming and lifeguards are on duty during the season. Across the way is a huge Marine area. This area has floating docks for the big boats and regular docks for smaller boats; a repair garage where boats may be repaired, bought or rented and a concession stand.

This park also has a superintendent's home, picnic areas and is an ideal place for water sports such as swimming, boating and fishing.



GEO. WASHINGTON CARVER Park

George Washington Carver Park is for colored people and consists of 354 acres. It has been leased to a private party but is operated under State supervision.

It has a modern bathhouse and concession facilities. There is a nice large beach area and also a section reserved for swimming with lifeguards on duty during the season. Boats are available for rent and picnic tables are also provided for outings.



HARD LABOR CREEK *Park*

Hard Labor Creek State Park consisting of 5,850 acres is located two miles north of Rutledge off State Highway 12. It contains two group camps; namely: Camp Rutledge and Camp Daniel Morgan with camping facilities to accommodate a total of 200 campers with staffs.

The park has two lakes, one known as Lake Rutledge consisting of 275 acres, and provides fishing and boating. The other known as Lake Brantley, consisting of 45 acres, features swimming and boating. Also near this lake is the picnic area completely equipped.



INDIAN SPRINGS *Park*

Indian Springs State Park is part of the little settlement of Indian Springs located 5 miles from Jackson, Georgia. It presently contains 152 acres, however, this is being increased by several hundred acres.

The development of Indian Springs State Park lies around a famous mineral spring, widely known for its curative powers which the Creek Indians recognized long before the coming of this chapter of American history.

A large stone casino faces the spring house and offers refreshments and relaxation to the visitors. A large picnic area with tables, benches and outdoor fireplaces is near the casino. A 100-acre lake is nearing completion and future development plans include a bathhouse and other facilities. You will also find children's playgrounds, museum building, health bathhouse and the Butts County 4-H Club Camp which serves 4-H club members from various organizations.



GEORGIA VETERANS MEMORIAL *Park*

This park lies ten miles west of Cordele deep in South Georgia. It consists of 1,000 acres and borders on Lake Blackshear, the only inland lake in the State that supports commercial fishermen.

Georgia Veterans Memorial was started in 1946 and is one of the most promising state parks in our system. A Memorial building containing complete restaurant and soda fountain facilities in year round operation. There are seven vacation cabins and two overnight cabins which are completely equipped and available to the public. There are boat docks, boats, picnic areas, playgrounds, and a concession stand on the shore of the lake.

In cooperation with the State Patrol, the VFW and many public spirited citizens, a Safety Patrol School has been completed including swimming pool and pavilion.

Modern Stables and race tracks plus good year round weather have attracted horse owners from the north who are using this park for their winter quarters.





KOLOMOKI MOUNDS

Park

This area contains 1283 acres and is located in the extreme southwestern part of Georgia. Some authorities rate this site as one of the three most important archaeological sites in the eastern United States. The mounds at Kolomoki have excited the curiosity of white men since Early County was laid out in 1818 and since the summer of 1948 archaeological investigations have been carried on under the direction of well-qualified archaeologists. An Indian burial mound has been excavated and sufficient material was found in this mound to justify the setting up of an in-place exhibit which was recently completed and opened to the public.

At Kolomoki you will find also a 75-acre lake suitable for fishing, swimming and boating; also a museum, picnic tables, outdoor grills, a trading post, a group camp and another small lake which is under construction.



JEFF DAVIS *Park*

This park contains approximately 12 acres and lies approximately 105 miles south of Macon. It surrounds and is a memorial to the site where President Jefferson Davis of the Confederate States of America performed the last official duties of his office. Upon this site Davis was captured by federal troops.

The purpose of this park is to commemorate the ideals of the Confederate States as exemplified in the person of its Chief Executive and to perpetuate in the hearts of the people the principles of constitutional government for which the Confederacy fought. This park has a museum which contains many relics of the Civil War period.



FORT MOUNTAIN *Park*



Fort Mountain lies in the extreme northern part of Georgia and within the Appalachian range. It is 25 miles from the Georgia-Tennessee boundary and 55 miles from Chattanooga, Tennessee. This area contains 1954 acres.

Potentially, Fort Mountain has promise of eventually becoming one of the outstanding state parks in the southeast. The park now offers picnicking, hiking, fishing, boating and swimming.

This development is around a steep mountain that rises 2,000 feet above the floor of the valley with views of the surrounding country. The views are unsurpassed in splendor and magnificence.

MAGNOLIA SPRINGS

Park

Magnolia Spring State Park is located on U. S. Highway 25 and State Highway 21 near the town of Millen. This 1100 acre park has long been famous because of Magnolia Spring. From this spring flows an estimated nine million gallons of crystal clear water each day. This water, because of the great depth from which it originates, is almost as cold as ice. It bubbles from the ground and forms a beautiful pool twelve to fifteen feet deep.

This park is especially popular with swimmers during the season because of its excellent facilities for bathing. It is equipped with a casino, bathhouse, beach and concession stand. It also has picnic shelters and two fine fishing lakes.



CLOUDLAND CANYON

Park

This park lies only 11 miles from the Georgia-Tennessee line and 20 miles from Chattanooga, Tennessee. It is near Trenton and 22 miles from Lafayette. It contains approximately 1200 acres. Cloudland Canyon State Park, lying in the beautiful foothills of the Appalachian range, is being developed. A park superintendent's residence is being constructed and additional picnic area is being cleared. The park embraces Sitton's Gulch, long a favorite destination for trips to the North Georgia mountains, being known as the Grand Canyon of the southeast.



CROOKED RIVER

Park

In extreme South Georgia almost to the Florida line, is one of our most popular State parks known as Crooked River. Consisting of 600 acres, it is located 51 miles south of Brunswick off of U. S. 17 near the town of Kingsland.

Crooked River State Park is the only inland park in Georgia where both salt water and fresh water is available. It borders on Crooked River just seven miles from the Atlantic Ocean where you can conveniently fish for salt water trout, flounder, and drum fish.

For the accommodation of the visitors there are ten completely equipped cottages available for rent the year-round. Here also you will find a beautiful swimming pool and bathhouse facilities. Near the pool there is a concession building serving refreshments. Also picnic areas, boats and playground equipment.

Marsh Hen hunting is one of the outstanding features at Crooked River where you will find several hundred acres of marsh providing some of the finest marsh hen hunting on the east coast. The season opens October 1 and closes November 30 and there is a bag limit of 15 per day and possession limit of 30 per day.



LAURA S. WALKER

Park

This park lies 7 miles outside of Waycross and is about 40 miles from the Georgia-Florida line. The great Okefenokee Swamp is only 10 miles distant. Laura S. Walker State Park, containing 160 acres, is located on the Georgia Coastal Flatwood Project. This demonstration project operates on 40,000 acres in Ware and Brantley counties. Forestry, wild-life propagation, soil conservation and other phases of land culture are being practiced on this project. This park provides complete facilities for group camp and day-use activities since it is well equipped with cabins, a clubhouse and a lake for fishing, boating and swimming.



AMICALOLA FALLS *Park*

One of Georgia's top tourist attractions for many years, Amicalola Falls State Park consists of 239 scenic acres and is located in Dawson County almost halfway between Dawsonville and Ellijay. The Falls, with a total drop of 739 feet, are the highest in Georgia and considered one of Georgia's seven natural wonders.

Amicalola has been a day-use area primarily; however, with the completion of five vacation cabins now under construction, the park will be able to accommodate week-end and vacation guests.



FRANKLIN D. ROOSEVELT

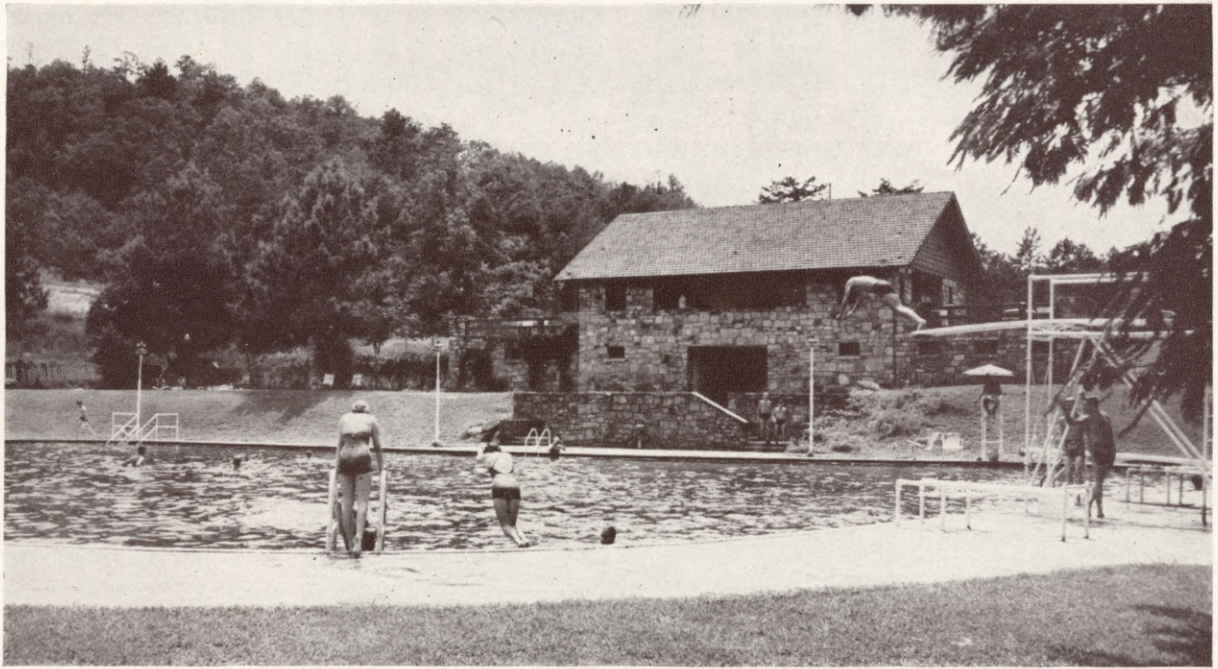
Formerly known as Pine Mountain State Park, Franklin D. Roosevelt named after our late president is located 80 miles southwest of Atlanta and near the towns of Chipley and the now famous Warm Springs. The park consisting of 5,063 acres is reached by U.S. 27.

Park

Outstanding features are its beautiful scenic vistas overlooking Pine Mountain Valley, beautiful stone Inn, vacation cabins, lake area, swimming pool and mountain trails. The swimming pool, as suggested by President Roosevelt, was designated and shaped in the form of a Liberty Bell with the wading pool at the top. The pool with three official, laminated diving boards and water slides, and the bathhouse of natural stone, form one of the most beautiful swimming areas in Georgia. Playground equipment adjoins the pool. Picturesque trails wind down the slope and along the streams. Magnificent ravines are choked with laurel and wild mountain flowers. The crest of the mountain itself offers a panorama of magnificent views and is accessible by a beautiful top along the mountain top from Tip Top to Warm Springs.

Other features includes two lakes, Lake Franklin and Lake Delano, two complete Group Camps, and large picnic areas with picnic shelters and tables.





BLACK ROCK MOUNTAIN

Park



Black Rock Mountain State Park, located north of Clayton, is another state park being developed. It consists of 1,100 acres of beautiful mountain scenery and has excellent potentialities for a recreational park.

A superintendent's residence, picnic area, water system and sanitary facilities are now being constructed. Future plans include a lake, vacation cabins, concession building, etc.

LITTLE OCMULGEE

Park

This park, lying three miles from the famous city of McRae and about 80 miles from Macon, contains 1,395 acres. It offers a large recreational and scenic area typical of the Georgia Piney Woods Section.

Little Ocmulgee State Park lies in the great fork where the Ocmulgee River joins the Oconee River to form the quietly flowing Altamaha. Through the wooded bottomlands of this park flows the Little Ocmulgee which has been impounded to form a large and scenic lake. This lake is used for fishing, boating and swimming. A rustic lodge has been constructed around the lake, also a large bath, spacious picnic facilities, drives through rolling park lands and several miles of trails for hikers.



NANCY HART

Park



Nancy Hart State Park is located near the town of Elberton. A memorial to the brave lady whose name the park bears, it consists of five acres of a 400 acre tract of land granted to her husband, Benjamin Hart.

A replica of her cabin home has been constructed in this area. Nancy Hart is a Revolutionary heroine who killed one British Tory, wounded another and captured four others after they had forced her to prepare a dinner for them. This park as yet is undeveloped.

FT. YARGO

Park



Fort Yargo extends into the incorporated limits of Winder. It is 40 miles northeast of Atlanta and 25 miles west of Athens. This area contains 1413 acres and is presently under development. A superintendent's residence has already been completed and future plans include a large lake. Fort Yargo Park takes its name from the old fort which is remarkably well preserved, having seen service during the Revolutionary War and, very likely, during the War of 1812. However, its exact origin is unknown.

Parks of the Future

Four new park areas have been leased by the State Parks Department on the Clark Hill Reservoir from the Federal Government. They are listed as Mistletoe Veterans Memorial Park Area, consisting of 1773 acres and located in Columbia County; Keg Creek Park Area for Negroes, consisting of approximately 957 acres and located in Columbia County; Bobby Brown Memorial Park located in Elbert County consisting of 632 acres and Elijah Clarke Memorial State Park in Lincoln County consisting of about 95 acres.

All of these park areas except Elijah Clarke are awaiting appropriations. The plans call for fully developed State Parks which will include complete facilities such as, sanitary facilities, water system, picnic areas, boating, swimming and in some cases group camps.

Approximately \$50,000 is being spent on Elijah Clarke Memorial State Park and work is in progress on a Water System, bathhouse and concession facilities, floating docks, picnic areas which include tables, grills, and picnic shelters. Photograph at the left top is Elijah Clarke Park. Center, is the Mistletoe Area and at bottom is the Keg Creek area for Negroes.



Attendance Report for 1952

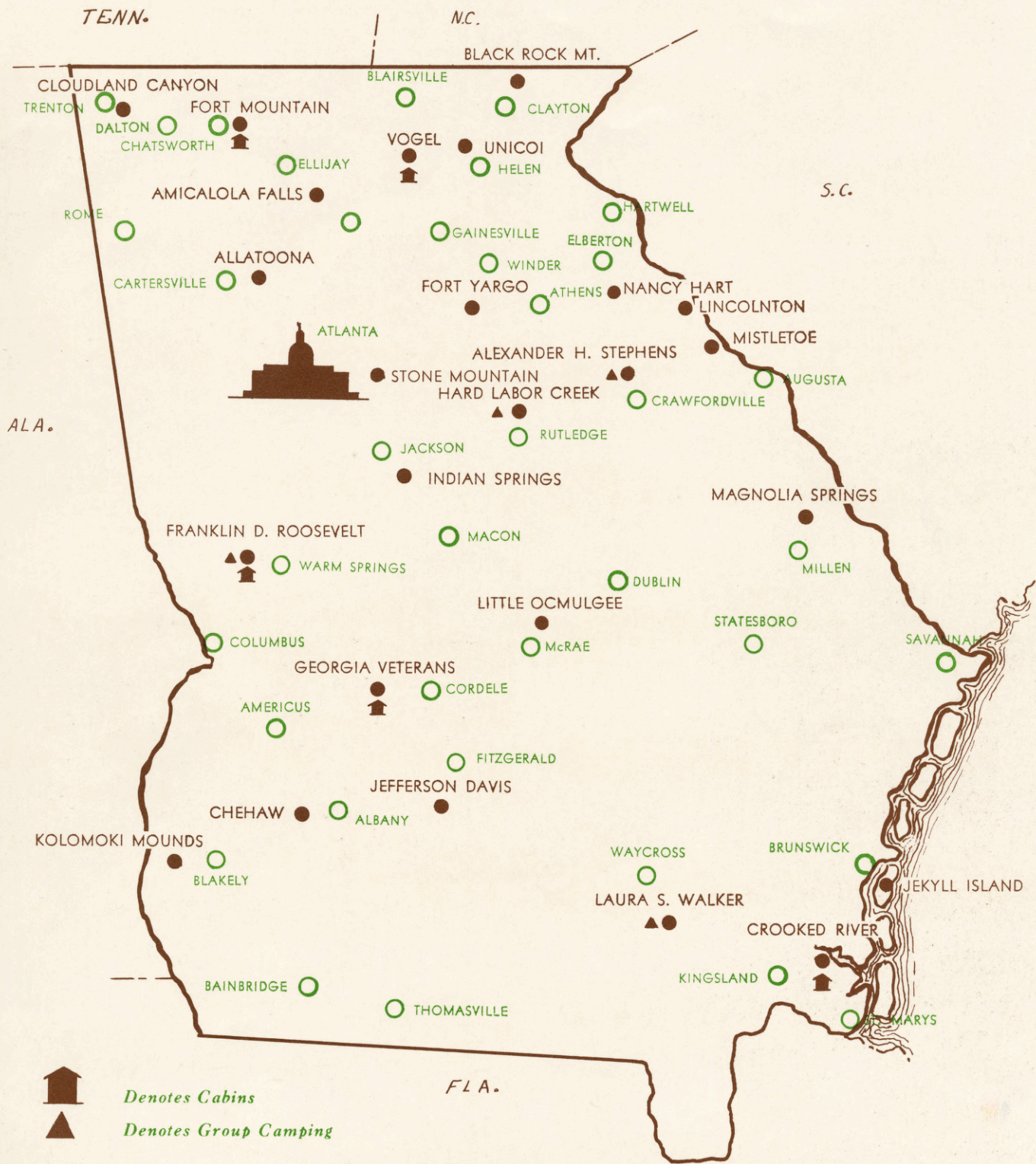
Alexander H. Stephens.....	31,781
Red Top Mountain.....	17,358
Chehaw	18,382
Cloudland Canyon.....	6,330
Crooked River.....	14,855
Fort Mountain.....	13,709
Hard Labor Creek.....	49,207
Indian Springs.....	532,335
Jefferson Davis Memorial.....	16,700
Kolomoki Mounds.....	38,140
Laura S. Walker.....	30,879
Little Ocmulgee.....	37,730
Magnolia Springs.....	21,149
Georgia Veterans Memorial.....	228,997
Franklin D. Roosevelt.....	344,402
Vogel	457,973

TOTAL ATTENDANCE.....1,859,927

(This report does not include park areas that are not operated on a full time scale due to insufficient information.)

GEORGIA STATE PARKS

ADMISSION FREE TO ALL STATE PARKS
 For information, contact
 DEPARTMENT OF STATE PARKS, 418 State Capitol, Atlanta



For Information On:
JEKYLL ISLAND STATE PARK
 Address Jekyll Island Authority 304 Grant Building, Atlanta, Georgia
STONE MOUNTAIN STATE PARK
 Stone Mountain Authority, Address Scott Candler, Chairman,
 Decatur, Georgia

