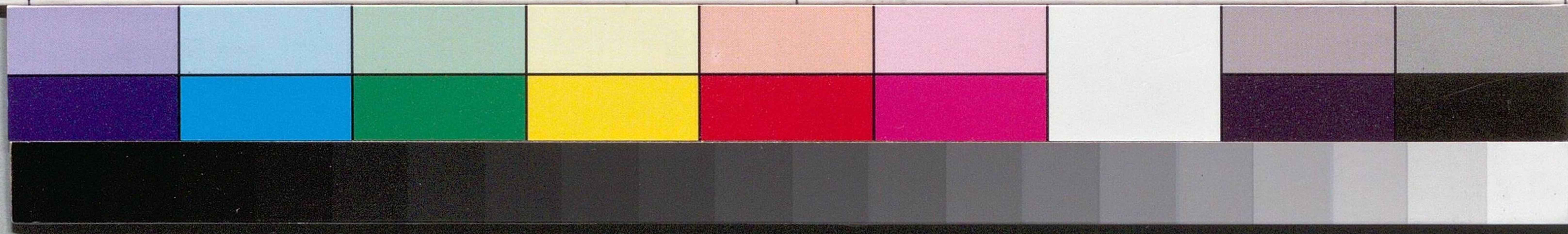
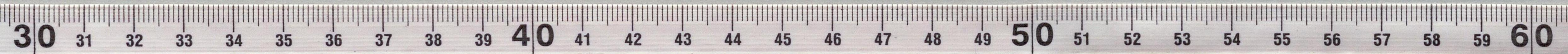
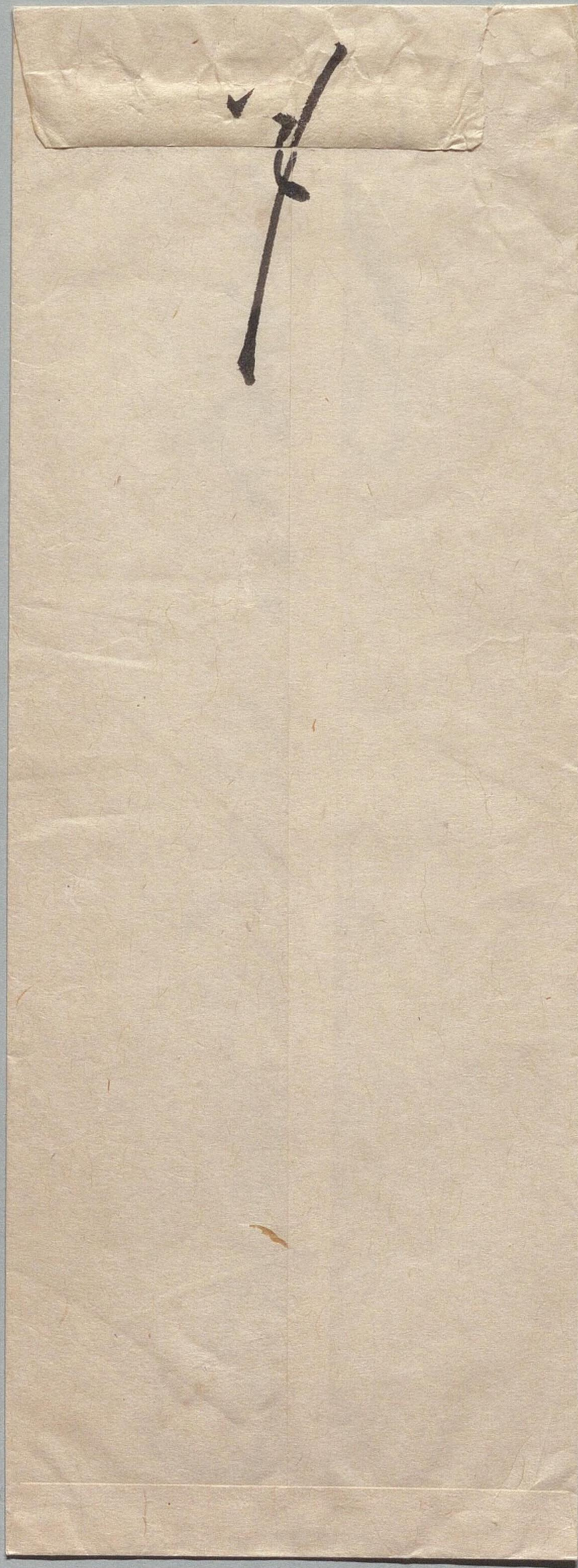


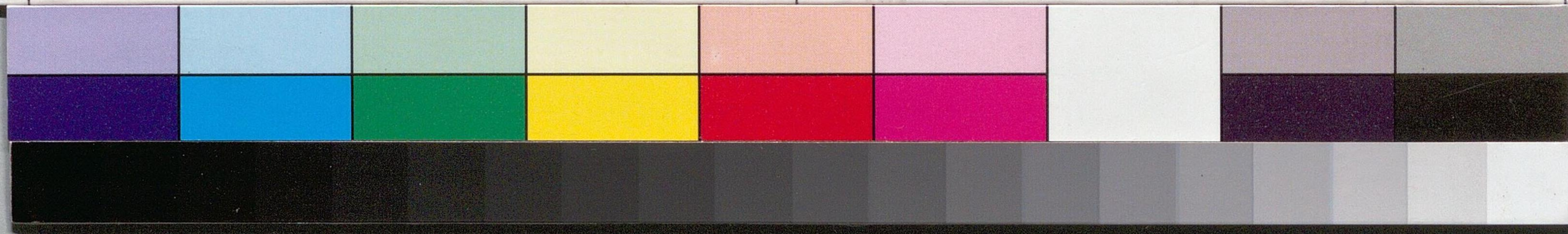
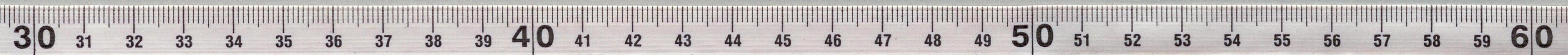
尾崎三良殿柳屋前光





国立国会図書館 尾崎三良関係文書 106-108

Handwritten Japanese text on a vertical strip of aged paper. The characters are written in a cursive style (sōsho). The text is oriented vertically and appears to be a fragment of a larger document.



有啓傳々々々集

餘可致得々々傳

病氣未々々愈々

後々々々々々々々

其世有有傳也

了々々々

柳智前光

尾崎三良殿