

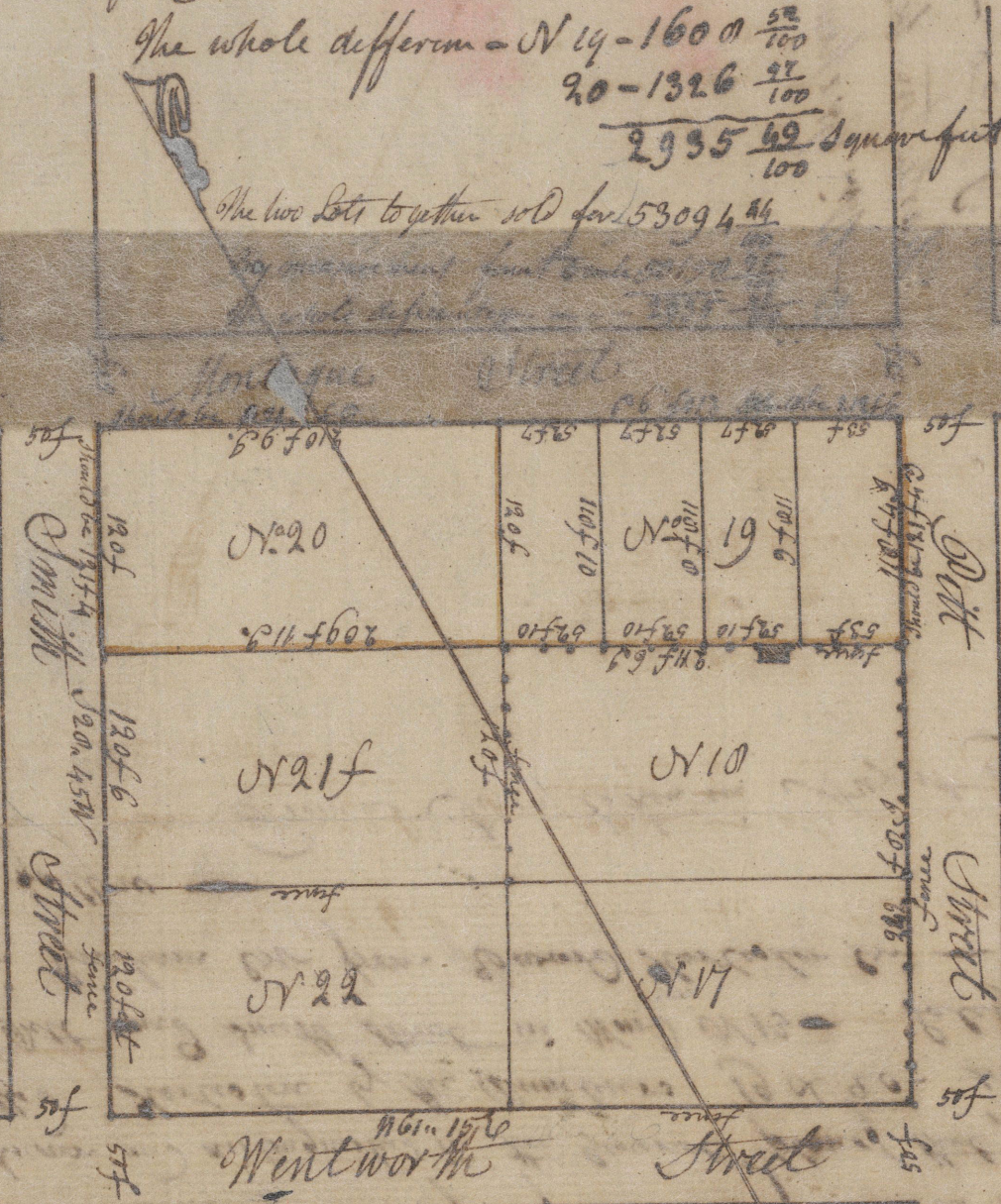
Lot N19 sold for 212 feet 6 in by 121 feet 4 in Containing 26547 $\frac{22}{100}$ sq ft
 Found to measure 210 f 9 in by 110 feet 4 in ----- 24930 $\frac{70}{100}$
 Makura deficiency - 1 f 9 in by 3 f 0 in ----- 1600 $\frac{52}{100}$ sq ft

Lot N20 sold for 212 feet 6 in by 121 f - 4 in Containing 26547 $\frac{22}{100}$
 Found to measure 210 f 9 in by 120 f - 4 in ----- 25220 $\frac{25}{100}$
 Makura deficiency - 9 in ----- 1326 $\frac{97}{100}$

The whole difference - N19 - 1600 $\frac{52}{100}$
 20 - 1326 $\frac{97}{100}$
 ----- 2926 $\frac{49}{100}$ square feet

The two lots together sold for 53094 $\frac{44}{100}$

Scale 100 feet
 per inch



10-216