

PN 1998

.A2 P5











---

---

# STARS OF THE PHOTOPLAY

---

---



*Published by*  
PHOTOPLAY MAGAZINE  
CHICAGO  
*Copyright, Photoplay Publishing Co.—1916*

PN1998  
A2P5

40.80

©Cl.A428063

MAR 13 1916

no. 1.





PATRIOTIC critics have long contended that when the time came for America's complete dramatic expression, this country would produce not only artists of the first order, but its own works for their interpretation. Even the enthusiasts have been distanced: this allegedly commercial people has not only wrought plays and reared people to play them, but has brought toward perfection an entirely new medium of imaginative expression—the first new art-form since the age of Pericles.

The Photoplay—yesterday, the “Motion Picture”—is now one of the Nation's greatest industries, and is the most useful of all arts, for it serves: it recreates, cheers, uplifts and broadens mentally and spiritually countless thousands. Yet even the ultra-connoisseur cannot say that it has not grown elaborate, imaginative and honestly reflective of life.

Herein Photoplay Magazine has endeavored to unfold a pictorial scroll of the New Art. This collection of more than one hundred photographic reproductions does not pretend to contain every worthy photoplay actor or actress, but it is fully representative of the men and women who made and are making this art-industry's interpretations.



## Photoplay Magazine's Popular Players



GERALDINE FARRAR

the foremost American prima donna, star of the Metropolitan opera company and "Carmen" in the Lasky film, was born in Melrose, Mass., in 1883. When seventeen she went to Europe to study, when nineteen made her debut at the Royal Opera in Berlin and when twenty-four returned to America to sing at the Metropolitan Opera House in New York. "Carmen," "Faust," "La Boheme" and "Madame Butterfly" have been exceptionally successful operatic vehicles.

## Photoplay Magazine's Popular Players



BILLIE BURKE

one of the notable recent converts to the tenets of the screen, was born in Washington in 1886 and has gained an international reputation upon the stage. Her last starring vehicle upon the stage was "Jerry" and she was first seen in films in the Ince-Triangle production of "Peggy," a Scotch play wherein she assumes the role of an independent American girl in a very staid community.

Photoplay Magazine's Popular Players



LENORE ULRICH

who, scarcely out of her 'teens, has risen from the ranks to genuine eminence on stage and screen. In two years she played in eighty-six dramatic roles—leading parts in such productions as "The Virginian" and "The Chorus Lady." More recently she was the nineteen-year-old star in Morosco's "The Bird of Paradise." "Kilmeny" is one of her Bosworth screen plays.

## Photoplay Magazine's Popular Players



DAVID WARK GRIFFITH

is the best-known photoplay director in the world, and by very many is considered the supreme artist among the makers of silent drama. His achievements become colossal when his career is viewed as a pioneer's. He not only has evolved the greatest screen plays of our time, but made the photoplay itself (in its present development) possible. Mr. Griffith is a Kentuckian, is of Southern-Scotch ancestry, and was on the legitimate stage for some years of mild success before his real career commenced.

Photoplay Magazine's Popular Players



DOROTHY GISH,

born in Dayton just 17 years ago, played "Little Willie" in "East Lynne" when four years old. Since that time she has blended blue eyes, beauty, talent and versatility until she has freed herself from the title, "Lillian Gish's little sister" and is a confirmed star all by herself. She is appearing under Griffith's direction in Triangle plays, recently in famous "Old Heidelberg."

## Photoplay Magazine's Popular Players



THOMAS H. INCE

never suspected, when playing vaudeville with moderate success, that he would be one of the greatest factors in American drama. But Griffith, Ince and Sennett are Triangle now. His "Battle of Gettysburg," "An Alien," and his early Triangle contributions are real features. He is a screen pioneer, son of a comedian, and a brother of Ralph Ince of Vitagraph. He was born in Newport, R. I., in 1882.



Photoplay Magazine's Popular Players



NORMA TALMADGE

one of the most chic of the screen favorites was born in New Jersey, May 2, 1895. She went directly to Vitagraph from high school in 1910 and continued with them until the summer of 1915; she is now with Triangle. She is five feet three and a brunette. Her part in "The Battle Cry of Peace," where, in a flash of real heroism, she shoots the spy with his own revolver, will long be remembered.

## Photoplay Magazine's Popular Players



MACK SENNETT

director of Keystone comedies, started as an actor with the old Biograph, about the time that D. W. Griffith joined them in a like capacity. The opportunity came to direct a comedy and he scored heavily with his first picture. He was one of the organizers of the Keystone company and has been the most consistent producer of high class film comedies; a dozen noted comedy stars owe their rise to his direction.

## Photoplay Magazine's Popular Players



FRED MACE

a stage comedian who has scored real success in films. He was one of the original Biograph company with Mack Sennett, and Mabel Normand, and upon joining Keystone became its first director to attain real celebrity. Ford Sterling, Mabel Normand, Mack Sennett and Fred Mace are the original Keystone Four; reunited since Fred Mace re-joined the Keystone.

## Photoplay Magazine's Popular Players



MABEL NORMAND

is one of the remarkable young women of filmdom. She was born in Atlanta, Georgia, a little more than twenty years ago and made her screen debut with Vitagraph, going, after a few months, to the old Biograph company. When Keystone was organized she was one of their original company of players and has continued with them ever since, long playing opposite Charles Chaplin.

## Photoplay Magazine's Popular Players



ROSCOE ARBUCKLE

of Keystone films, is on the comedy side of the Triangle programme, and his two hundred and eighty pounds of rollicking good humor are a mighty asset. Was once a college boy and played football; then a musical comedy star and sang tenor; finally films and fortune. Famous in "Fatty and Mabel" pictures with Mabel Normand. He is married to Minta Durfee, his co-star in many plays.

## Photoplay Magazine's Popular Players



DOUGLAS FAIRBANKS

is one of the foremost screen acquisitions of the season and has been seen recently in "Double Trouble" and "The Lamb," both Griffith hits. He is one of the most energetic leading men, and has played in several stage successes, starring in "The Gentleman from Mississippi," and "Hawthorne of the U. S. A." He was born in Denver, is married and has one son.

## Photoplay Magazine's Popular Players



BESSIE BARRISCALE

created the leading parts in "Rose of the Rancho" and "The Bird of Paradise," and was long the most prominent of the younger actresses. In her first screen appearances, "The Cup of Life" and "The Devil," her sincerity and her refined beauty made an immediate impression upon playgoers. One of her recent pictures is "The Golden Claw," an Ince-Triangle production. She is small and has brown eyes and curly hair.

## Photoplay Magazine's Popular Players



WILLIAM S. HART

played Broadway eighteen years in such roles as *Messala* in "Ben Hur," *Cash Hawkins* in "The Squaw Man," and with Charlotte Walker in "The Trail of the Lonesome Pine" before joining the Ince forces. He is being starred by Triangle now and "The Two-Gun Man," "The Disciple," and "Between Men," are late vehicles. He is six feet two; was born in Newburgh, N. Y., Dec. 6, 1876, and is unmarried.



## Photoplay Magazine's Popular Players



HOUSE PETERS

attracted attention with Famous Players "In the Bishop's Carriage," and has followed his success there with leading roles in "The Girl of the Golden West," "The Warrens of Virginia," "The Captive," and "The Unafraid" (Lasky), "Mrs. Wiggs of the Cabbage Patch," "Mignon," and "Salomy Jane" (World), "Between Men" and "The Winged Idol" (Triangle), and Lubin's "Great Divide."

## Photoplay Magazine's Popular Players



LILLIAN GISH

born in Springfield, O., Oct. 14, 1896, made her debut behind the footlights when six years old in "The Little Red Schoolhouse." She was one of that group of players familiar under the direction of D. W. Griffith, and was cast in important roles in "Battle of the Sexes," "Home, Sweet Home," "The Birth of a Nation," and "The Lily and the Rose." A sparkling blonde.

## Photoplay Magazine's Popular Players



ALICE BRADY

the daughter of the redoubtable theatrical manager, William A. Brady, is herself a star of both the screen and stage. She is tense, magnetic, emotional, and furthermore, one of the most beautiful girls in pictures. Her first "legitimate" success was in "The Balkan Princess," about six years ago, and she scored heavily in "The Boss," a World film, opposite Holbrook Blinn.

## Photoplay Magazine's Popular Players



HAROLD LOCKWOOD,

six feet tall, a Brooklyn boy, with fair hair and blue eyes, he is one of the most popular leading men, youthful and winning of manner. Was once on the stage but the public knows him in "Tess of the Storm Country," and "Hearts Adrift," with Mary Pickford; in "Wildflower," and "The Crucible," with Marguerite Clark; and opposite May Allison in American films.

Photoplay Magazine's Popular Players



MARGUERITE CLARK

the star of "The Crucible," "Gretna Green," "The Goose Girl," "Pretty Sister of Jose," "Seven Sisters," "Helené of the North," "Still Waters" and "Prince and Pauper," had played with great success on the stage before beginning film work. In "Baby Mine," "Prunella," "Snow White" and "Wishing Ring" she had won lasting fame. She was born in Cincinnati, Feb. 22, 1887, is five feet two and has brown hair.

## Photoplay Magazine's Popular Players



SPOTTISWOODE AITKEN

is D. W. Griffith's leading character man and will long be remembered as Dr. Cameron in "The Birth of a Nation." He was born in Edinburgh, Scotland, and began his theatrical career at the age of 17. He was of the original cast of "The Dangers of London," and held many other important stage engagements. An excellent cartoonist, a proud father and a great gardener.

Photoplay Magazine's Popular Players



MAE MARSH

though only nineteen, has scored several decided hits—in "The Escape," "Home, Sweet Home" and "Sands o' Dee" but her fame gathering role was Flora Cameron, "your big little sis," in "The Birth of a Nation." She was born in New Mexico but early moved to California, where, in Los Angeles, she began screen work under the direction of D. W. Griffith.

Photoplay Magazine's Popular Players



CECIL B. DE MILLE

was one of the three originators of the Lasky company and has from the beginning had full charge of production. He is a son of the late Henry C. De Mille the famous dramatist and a brother of William C. De Mille. Farrar's "Carmen," "Warrens of Virginia," "The Rose of the Rancho," "The Girl of the Golden West," "The Virginian," and "The Man from Home" were all filmed under his direction.



## Photoplay Magazine's Popular Players



THEODORE ROBERTS

one of the most illustrious of American character actors, was born in San Francisco in 1861. Famous before entering filmland, he has achieved further notable success in Lasky pictures as the sheriff in "The Girl of the Golden West," the Grand Duke in "The Man from Home," secret agent in "The Unafraid," the senator in "The Woman," the lawyer in "The Marriage of Kitty" and in "The Secret Orchard."

Photoplay Magazine's Popular Players



CLEO RIDGELY

the blonde with the gray eyes and subtle smile, was born in New York City in 1892. She was raised on a Wisconsin farm but she left it and played in stock and on the road prior to joining Kalem in 1909 where she was "The Girl Detective." She is now with Lasky and in their plays has done stellar work in "Stolen Goods," "The Fighting Hope," and "The Chorus Lady."

Photoplay Magazine's Popular Players



PEARL WHITE

made her first screen hit as Pauline in Pathe's "Perils of Pauline," and followed that success with "Exploits of Elaine." However, she had played for a number of years on the stage, after leaving her Missouri home to be Little Eva in "Uncle Tom's Cabin." Her birthday is March 4th, and she says her eyes are green to match her light red hair—she's Irish-Italian, five feet five.

## Photoplay Magazine's Popular Players



DUSTIN FARNUM

comes from New England where he was born in 1876. He is a quarter of an inch taller than his six foot brother William, weighs one hundred and eighty, and has brown hair and brown eyes. His success on the stage was great but even greater have been his film achievements in "The Squaw Man," "Cameo Kirby," "The Virginian," "Captain Courtesy," and the "The Iron Strain."

## Photoplay Magazine's Popular Players



WILLIAM FARNUM

a brother of Dustin and Marshall, has black hair and blue eyes, and puts two hundred pounds of genuine "punch" into pictures. Like Dustin he is married and had gained fame upon the stage before becoming a film hero. He leads in "The Spoilers" (Selig), and in "The Plunderer," "Samson," "The Nigger," "Gilded Fool," and "The Bondmen," for Fox, all smashing, human, dramatic productions.

## Photoplay Magazine's Popular Players



ETHEL CLAYTON

joined the Lubin company with several years of experience to her credit, both in stock and opposite noted stars. In company with Joseph Kaufman she has been the creator of a notable series of screen dramas dealing with the problems of husband and wife. "In the Dark," "The Blessed Miracle" and "A Woman Went Forth" are among the most notable.

Photoplay Magazine's Popular Players



RUTH STONEHOUSE

is a daughter of Victor, Colorado, where she was born a trifle over twenty years ago. Before her bright career as a screen favorite she was a dancer and she uses her dancing ability to good advantage in "The Slim Princess." She is small, blonde and brown-eyed, particularly interesting as the Red Cross nurse in "The Crimson Wing," an Essanay war play.

Photoplay Magazine's Popular Players



MARGUERITE COURTOT

petite ray of dramatic sunshine, is a veritable ingenue, having been born at Summit, N. J., August 20, 1897. She is of French ancestry, has never been on the stage and has never appeared with any company except Kalem, which she joined in June of 1912. She long played "opposite" Tom Moore and is featured in "The Ventures of Marguerite."



## Photoplay Magazine's Popular Players



HELEN HOLMES

is the foremost exponent of film melodrama, the "Railroad Girl" who made the "Hazards of Helen," so popular. She is just twenty-two, is five feet four, and has clear brown eyes and brown hair. Without stage experience, she first played with Keystone, then Kalem and Universal and then with Signal Films of Mutual. Her husband is the noted director, J. P. McGowan.

## Photoplay Magazine's Popular Players



FRANCIS XAVIER BUSHMAN

comes from Richmond, Va., where he was born thirty years ago. He was playing in "The Bishop's Carriage," in Philadelphia when he joined Essanay, with whom he continued over four years. Early in 1915 he began appearing with Metro, co-starring with Beverly Bayne who re-joined him. Handsome, virile, athletic, he is one of the screen's most popular idols.

Photoplay Magazine's Popular Players



BEVERLY BAYNE

was born in Minneapolis but has lived in Chicago so long that she calls herself a Chicago girl. Four or five years ago, in the spirit of adventure, she applied to Essanay for an extra part and next day found herself "a regular." Opposite Francis X. Bushman she is known to playgoers in "Dear Old Girl," "Masked Wrestler," "Graustark" and in "Pennington's Choice."

## Photoplay Magazine's Popular Players



MARY PICKFORD

is the beloved interpreter of life for the millions who see her every day, and is still affectionately proclaimed "the Queen of the Movies." That is why her salary with the Famous Players is \$100,000 a year. Her sincere, natural art is to the films what Maude Adams has been to the stage. "Little Mary" was born in Toronto 22 years ago. (Belasco once starred her in children's parts.) Her husband is Owen Moore, a leading screen man.

Photoplay Magazine's Popular Players



OWEN MOORE

is one of the three noted Moore brothers and the husband of Mary Pickford, whom he played opposite in "Cinderella" and "Mistress Nell." With Fritzi Scheff he played in "Pretty Mrs. Smith," with Elsie Janis in "Caprices of Kitty," and with Lois Meredith in "Help Wanted." As the winning young Englishman, he was Dorothy Gish's hero in "Jordan is a Hard Road."

## Photoplay Magazine's Popular Players



JULIA SWAYNE GORDON

one of the handsomest women on the screen today, has been identified with Vitagraph throughout her studio career. A descendant of English, French and Spanish ancestors, she was born in Columbus, Ohio in 1881, played several seasons in stock and toured the south with her own company. "413," "The Sins of the Mothers," and "The Juggernaut," have made her a great favorite of theatregoers.

Photoplay Magazine's Popular Players



ANITA STEWART

began her career as a screen actress and has never been outside the Vitagraph ranks. She was born Feb. 17, 1895 and is a sister-in-law of Ralph Ince, the Vitagraph director. Her success was immediate and has been exceptionally great, especially in plays opposite Earle Williams. "A Million Bid," "Juggernaut," "From Headquarters," "Sins of the Mothers," and "The Goddess" have all added to her fame.

Photoplay Magazine's Popular Players



LILLIAN WALKER

is a feminine confection composed of dimples, golden hair and curves. She was born in Brooklyn and as an artist's model by her beauty attracted attention and she got her opportunity on the stage. All her picture appearances have been Vitagraph productions, and she is best known for her work in "Cinderella's Slippers" and the "Miss Tomboy" series.



Photoplay Magazine's Popular Players



MARY MILES MINTER,

in private life Juliet Shelby, was born in Shreveport, La., April 1, 1902, but even so, she has had eight years of theatrical experience! She was in the original "Littlest Rebel" company with William and Dustin Farnum and has played in a number of pictures; "Emmy of Stork's Nest," and "Barbara Frietchie," among them. She is five feet tall and has blue eyes and golden hair.

Photoplay Magazine's Popular Players



JACK WARREN KERRIGAN

was born in Louisville, Kentucky, July 25, 1889, and played for a number of years on the stage, being featured in "The Road to Yesterday," and "Brown of Harvard." In 1910 he began his film career with Essanay, and then went to American and Universal, being seen in the latter company's "Terence O'Rourke" series, "Samson and Delilah" and "Adventures of Jacques." He is unmarried.

## Photoplay Magazine's Popular Players



EARLE WILLIAMS

leading man with the Vitagraph, is one of California's "native sons," and a nephew of James Paget, one of the most famous actors of the past generation. He entered theatrical work as a boy in New Orleans, and later was heavy with Rose Stahl in "The Chorus Lady" and juvenile in Mary Mannerling's "Glorious Betsy." He joined the Vitagraph company to while summer idleness away, and remained to become an international favorite.

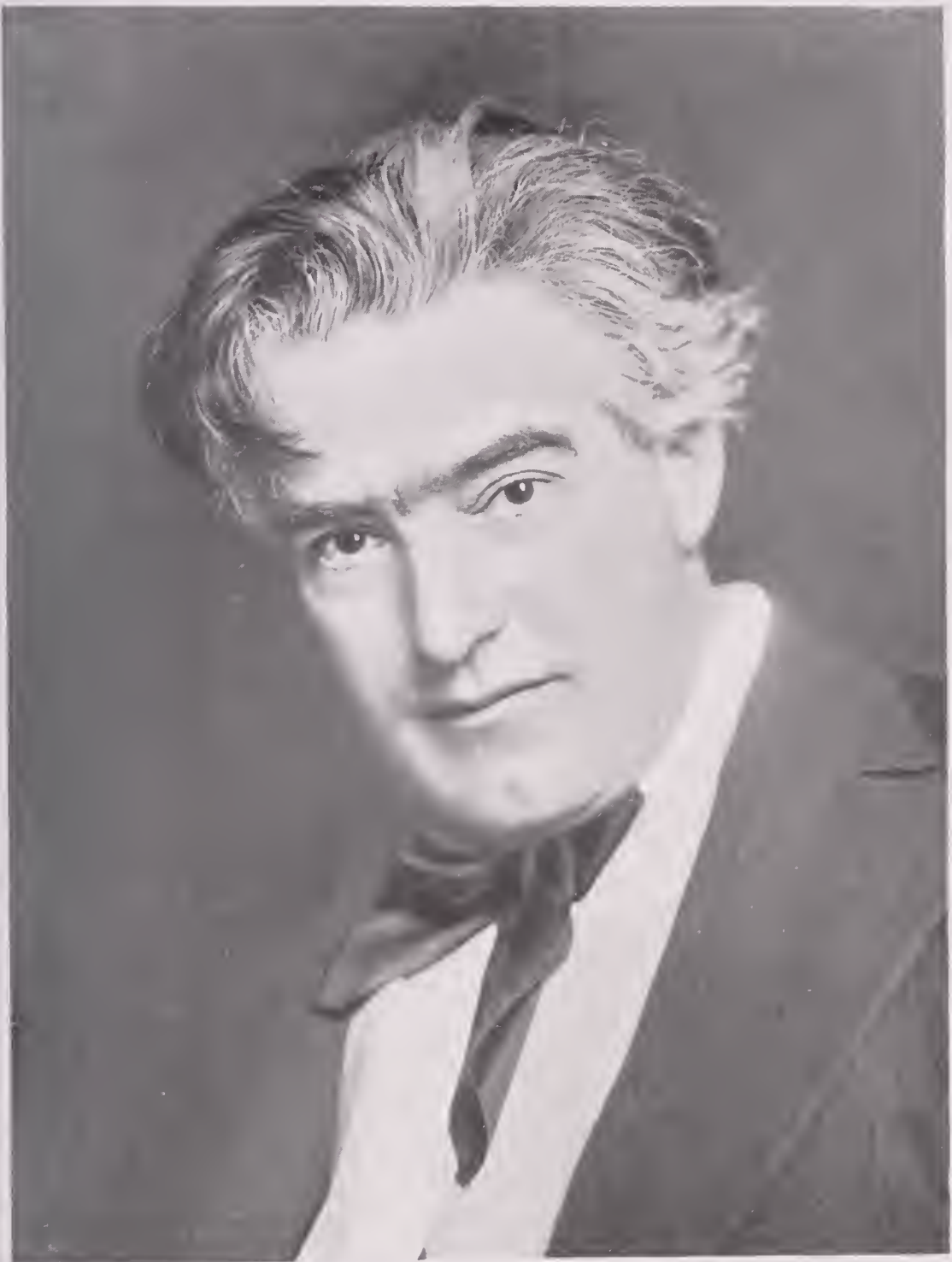
## Photoplay Magazine's Popular Players



HOBART BOSWORTH

left the stage directorship of the Belasco Theatre in Los Angeles in 1909 and took the leading role in the first screen drama filmed in the west, a Selig picture. Years of theatrical work with noted productions had preceded his film debut and his success as actor and director for Selig, Bosworth, Inc. and Universal has been great. Adele Farrington is his wife.

Photoplay Magazine's Popular Players



TYRONE POWER,

one of the towering personalities of the screen, first appeared in films in "Aristocracy," for Famous Players, was long with Selig, and is now with Universal. He took the lead in "The Texas Steer," and very recently in "Sweet Alyssum," opposite Kathlyn Williams. He says in all his stage career he was never so "fussed" as when camera-acting on the sidewalk before a crowd.

## Photoplay Magazine's Popular Players



TOM FORMAN

is best known to playgoers by his work with Edith Taliaferro in "Young Romance" and opposite Ina Claire in "The Wild Goose Chase," both Lasky productions. Before joining the Lasky studios Forman acted, directed, and wrote scenarios for the Lubin and Universal companies. He was born on a Texas ranch 22 years ago and attended Texas State University.

## Photoplay Magazine's Popular Players



INA CLAIRE

who plays so pleasingly in "The Wild Goose Chase" and "The Puppet Crown" films, began her theatrical life in vaudeville and then joined the "Jumping Jupiter" company with Richard Carle. From the "Follies Bergere" she stepped into the title role of "The Quaker Girl" and then played in "The Girl from Utah." Was also Marie-Odelie in the Ziegfeld Follies of 1915. Washington, D. C., claims her.

## Photoplay Magazine's Popular Players



FORREST STANLEY

of Morosco films, has been for four years, leading man at the Burbank, Los Angeles. After securing his engineering degree at Columbia, he decided to give his entire attention to the stage, and played in stock and on Broadway before going to Los Angeles. He leads in "The Wild Olive," and "The Rug Maker's Daughter," and his work adds the real smash to "The Yankee-Girl."



## Photoplay Magazine's Popular Players



ARNOLD DALY

a distinguished American actor, is as well known upon the London stage as in America. He introduced George Bernard Shaw, the Anglo-Celtic satirist, to this country, by bringing over one of the Shavian comedies under his own direction, playing the lead at the same time. He is familiar to theatregoers in the "legitimate" production of "Candida," and the film "Exploits of Elaine."

## Photoplay Magazine's Popular Players



ELLA HALL

is a New Yorker, with all the added life that California lends to genius. She was born March 17, 1897 and has done pictures for six years, starting with Biograph, then Reliance, and then Universal. She is five feet one, a blonde, with blue eyes and golden hair. The public knows her as the little heroine in Bob Leonard's plays.

## Photoplay Magazine's Popular Players



ROBERT LEONARD

was born in Chicago, raised in Denver and before he was twenty was playing with Morosco's Burbank stock company in Los Angeles, continuing there until he joined the western Universal forces. Now he is the biggest, huskiest author-director-actor in the business and for the last two years has been co-starring with Ella Hall. He's twenty-six and his birthday is October 7th.

Photoplay Magazine's Popular Players



NANCE O'NEIL

a tragedienne, to whom the word "distinguished" may justly be applied, has made a remarkable success in a series of tremendous roles during her few months in active photography. Miss O'Neil is a Californian, achieved foot-light fame under the direction of McKee Rankin, and is unmarried. "Nance O'Neil" is a stage name, her own name being Lamson.

## Photoplay Magazine's Popular Players



THEDA BARA

is a Cincinnati girl who has won fame in the portrayal of "vampire" roles. Born in 1890, she attracted attention by her dramatic ability while still attending Walnut Hills high school. The Fox "Carmen," "A Fool There Was," "Kreutzer Sonata," "Two Orphans," "The Clemenceau Case," and "The Devils Daughter," have all increased her dramatic reputation.

Photoplay Magazine's Popular Players



VIOLA DANA

although born as recently as June 28, 1898, has had twelve years stage experience, and has become a great favorite in Edison films. She appeared on the stage in "The Littlest Rebel," and "Poor Little Rich Girl," and her film presentation of the little girl in "The Stoning," and "Gladiola," was very pleasing. A Brooklyn girl with dark brown hair and gray eyes.

## Photoplay Magazine's Popular Players



ANNA LITTLE

is the tanned and stetsoned daughter of California who plays tennis just as well as she rides horses. After considerable stage experience she joined Kay-Bee, and then Universal where she established herself with the public in her work opposite Rawlinson in "The Black Box," and as Calanthe in "Damon and Pythias." She is typically western in Jack Richardson's Mustang plays. Unmarried!

Photoplay Magazine's Popular Players



EDWARD EARLE

was born in Toronto, Canada, in 1884 and made his first public appearance in the Valentine stock company of that city in 1899 at the time Mary Pickford began child parts. During his stage career he played with De Wolf Hopper, Henrietta Crosman and Mary Mannering. He joined Pathe in 1913 but almost immediately went to Edison, with which company he has been ever since.



Photoplay Magazine's Popular Players



RICHARD C. TRAVERS

leading man of Essanay was born at a Hudson Bay Trading Post, is the son of a minister and is said to have held a commission in the British army. That's what got him into the movies. He is all athlete—rides, shoots, swims, skates, drives auto, ice-boat and plays tennis. In one of his films "The Race For Love" he drove Oldfield's Benz 90 miles an hour.

Photoplay Magazine's Popular Players



GRACE CUNARD

began her screen career with Biograph and later played with Lubin and Kay-Bee, but it was with Universal opposite Francis Ford, that she became famous. She was born in Paris, April 8, 1891, but is strictly an American. She is about five feet six and has dark hair. "The Campbells Are Coming," "Lucille Love" and the "Broken Coin" are Cunard-Ford plays.

Photoplay Magazine's Popular Players



FAY TINCHER

was born in Topeka, Kansas, then moved to Chicago where she began her career with the Sho-Gun company. After several years on the stage, she joined Reliance under the direction of D. W. Griffith and played Cleo in "The Battle of the Sexes." Since that time she has played almost entirely in comedy and her striped parasol and striped dress in "Ethel" and "Bill" series are sure smiles any time.

Photoplay Magazine's Popular Players



MABEL TRUNNELLE

is the merry-serious girl whose expressive eyes and face mirror emotions more effectively than a hundred voices. She was educated upon the stage for the five years she has spent in films, mostly before Edison cameras. Miss Trunnelle is a modest, cheerful, winsome young American wife whose husband is Herbert Prior.

Photoplay Magazine's Popular Players



MIRIAM NESBITT

an actress of unusual poise and grace, was born in Chicago, Illinois, and made her dramatic debut in Charles Frohman's production of "The Tree of Knowledge" in 1898. Afterwards she appeared in "The County Chairman," "Peter Pan," and "David Harum." She has been with the Edison company six years and is unmarried. She has brown hair and gray eyes.

## Photoplay Magazine's Popular Players



BLANCHE SWEET

born in Chicago, first appeared in a stage play "Blue Jeans," and on the screen with the old Biograph company under D. W. Griffith's direction. From Biograph she went to Reliance and thence to Lasky. "Judith of Bethulia," "The Escape," "Home, Sweet Home," "The Avenging Conscience," "The Captive," "Stolen Goods," "The Secret Orchard," and "The Case of Becky" are a few of her plays.

## Photoplay Magazine's Popular Players



MARC MACDERMOTT

is a Londoner and began playing in England. Later he toured Australia and finally came to America with Mrs. Patrick Campbell's company. He is a very well known character actor and has appeared in many Edison films. "Eugene Aram" and "Sally Castleton, Southerner," the latter with Miriam Nesbitt and Bessie Learn are two of his well known screen productions.

## Photoplay Magazine's Popular Players



ROSEMARY THEBY

came to New York from her home in St. Louis without the least theatrical experience. She studied in a dramatic school for nearly a year and then began her screen career with the Vitagraph company. She never was on the stage. From Vitagraph to Lubin, thence to Reliance and then to Universal playing opposite Harry Myers. Of French and German descent, a brunette.



## Photoplay Magazine's Popular Players



ARTHUR V. JOHNSON

is one of the most liked of the screen's people. Following fourteen years of "legitimate" experience, he joined the old Biograph company under Griffith's direction and then for four years he was with Lubin as actor and director. He, as the commanding hero, and Lottie Briscoe, as the charming heroine, made a very popular team.

## Photoplay Magazine's Popular Players



THOMAS SANTSCI

is a tall, rugged personality—McNamara of "The Spoilers," who staged that terrific fight with William Farnum. Santschi (his name is Paul W.) was one of the earliest members of the Selig company and has continued to act and direct for them. Stage experience preceded pictures but he became known to the public as the American hunter in "The Adventures of Kathlyn."

## Photoplay Magazine's Popular Players



KATHLYN WILLIAMS

is familiar to the public as the American girl in "The Adventures of Kathlyn," and in "The Spoilers," and "The Ne'er Do Well," all Selig films. Her stage career commenced at the age of eight and she played in "When We Were Twenty-one," "Mrs. Dane's Defense," and "The Man of the Hour." She was born in Butte, Mont., and joined Biograph in 1908, Selig in 1909. Blonde with blue eyes.

## Photoplay Magazine's Popular Players



EDNA PURVIANCE

the sparkling blonde lead opposite Charlie Chaplin in the Essanay films, came from Lovelock, Nevada, to San Francisco to study stenography. With some friends she visited Niles and Chaplin stopped right in the middle of a picture to engage her for his company. Theatregoers were suddenly surprised by a radiant new face on their daily screen and it proved to be Edna.

## Photoplay Magazine's Popular Players



CHARLES CHAPLIN.

Charles Chaplin, Sr., and his wife Lillie Harley, were touring France in vaudeville in 1889, and Charles Chaplin, Jr., was born at a hotel in Fontainebleau on April 16th of that year. He started acting when a child and came to America with "A Night in an English Music Hall," in 1910, touring for three years, until he joined Keystone and later Essanay.

## Photoplay Magazine's Popular Players



FRANCIS FORD

Universal director and leading man was born in Portland, Maine, and served through the Spanish-American war. On his return from Cuba he went on the stage in stock, and was drafted into the moving pictures in the infancy of the business. He is best known for his work opposite Grace Cunard in the Universal serials "Lucille Love" and "The Broken Coin."

Photoplay Magazine's Popular Players



FLORENCE LA BADIE

as Florence Gray was a big factor in the success of "The Million Dollar Mystery." She was born in New York April 27, 1895, entered the "legitimate" in "The Blue Bird," and joined Biograph in 1911 and Thanhouser in 1912. Her father is French, her mother is German. She's five feet five, has light brown hair and blue eyes, and is unmarried.

Photoplay Magazine's Popular Players



MRS. MARY MAURICE

the Vitagraph "mother lady" is a Philadelphian. During her long stage career, she appeared in support of Booth, Barrett, Jefferson, Modjeska and her last engagement was with Robert B. Mantell. She doesn't mind admitting that she is past sixty, but she has the heart of youth and is the best loved of screen mothers. She plays in both "The Goddess" and "The Battle Cry of Peace."



Photoplay Magazine's Popular Players



HENRY B. WALTHALL

born in Shelby County, Ala., in 1880, is a Spanish War veteran. For seven years he played before the footlights and then joined that group of players familiar under the direction of D. W. Griffith. "Home, Sweet Home," "Avenging Conscience," and "Ghosts" are well known, but Walthall's lasting fame rests upon the role of the Little Colonel in "The Birth of a Nation." He is married.

## Photoplay Magazine's Popular Players



HERBERT RAWLINSON

is one of the screen's foremost leading men. Brighton, England, was his birthplace, Nov. 15, 1885, and he received his education in England and France. Six feet tall, with brown hair and blue eyes, he played successful on the stage for seven years. Selig in 1911, Bosworth's "Sea Wolf" in 1913, and Universal 1914, in "Damon and Pythias," "The Black Box," and others.

## Photoplay Magazine's Popular Players



ORMI HAWLEY

talented star, was born in Holyoke, Massachusetts, and lived there until a few years ago when she accepted her first engagement on the stage. After thorough experience in stock she joined the Lubin company at Philadelphia, and was long their leading woman. She has clear, steady gray eyes, a wealth of golden hair and a regular, classic profile.

## Photoplay Magazine's Popular Players



CRANE WILBUR

first appeared in films with the Vitagraph company, and, opposite Pearl White, took the lead in Pathe's "Perils of Pauline." From Pathe he went to Lubin where he was featured in "The Road o' Strife," and thence to the Horsley company. Mr. Wilbur was born in Athens, N. Y., Nov. 17, 1886, and had acquired wide stage experience prior to becoming a screen player.

Photoplay Magazine's Popular Players



ROBERT WARWICK

one of the World Film Corporation's stock company is a popular westerner who began theatrical work in New York and played there for several years. His film career opened with "The Man of the Hour," and since then he has been seen in "Alias Jimmy Valentine," "The Dollar Mark," "The Stolen Voice," and "The Sins of Society," in all of which his work is of a very high order.

## Photoplay Magazine's Popular Players



MIRIAM COOPER

is the elder Cameron sister in "The Birth of a Nation," the proud, dark-eyed daughter of the South to whom defeat is so bitter. She is the sister of the Little Colonel (Walthall) and Flora Cameron (Mae Marsh). She has long been with the Reliance-Majestic studios and is well known in many of their plays, notably "Home, Sweet Home," and "The Story of a Story."

## Photoplay Magazine's Popular Players



**DOROTHY BERNARD**

formerly of Famous Players and then a Fox star, had much stage experience before being picturized. She was for three years leading woman at the Belasco Theatre in Los Angeles, played in stock in Washington and then on Broadway. Biograph was her entrance into films, after which she was with Lubin. "Princess Romanoff," and "Little Gypsy," are two well known films.

## Photoplay Magazine's Popular Players



BESSIE LEARN

ingenue of the Edison company, is 22 years of age, and in the short time that she has been before the camera has made an enviable record for vivacious and appealing comedy. Little Miss Learn has been featured in some of the best comedies of Edison release, and is also a serious player of marked ability.



Photoplay Magazine's Popular Players



CLARA KIMBALL YOUNG

of the World films, is one of the famous Kemble family of English actors, and the wife of James Young, the noted director. She was born in Chicago and played in stock and with road companies prior to joining Vitagraph. She has taken leading roles in numerous successful plays: "Lola," "Hearts in Exile," "My Official Wife," "Trilby," "Heart of the Blue Ridge."

## Photoplay Magazine's Popular Players



WILLIAM RUSSELL

is a man's man: six feet two, a graduate of Fordham and one of the country's cleverest amateur boxers. "Big Bill," his friends call him. Mr. Russell made a reputation on the stage before he joined the pictures. He has been starred in Famous Players productions and has recently won honors as the "heavy" in "The Diamond From The Sky."

## Photoplay Magazine's Popular Players



PAULINE FREDERICK

star of the picture version of Hall Caine's "Eternal City," was born in Boston in 1884, and made her first stage appearance at the Knickerbocker Theatre, New York, in 1902. Her big dramatic successes were "Samson," "Joseph and His Brethren," and "Innocent." Miss Frederick is a recent star in "Sold," "Zaza" and "Bella Donna," three Famous Players' films.

Photoplay Magazine's Popular Players



MARY FULLER

is a synonym for active photography. Her childhood was spent on a farm, but her ambition, sincerity, brown eyes and curly hair soon won her success on the stage and triumphs upon the screen. With Edison she played the title roles in "Who Will Marry Mary," and "Dollie of the Dailies," and now with Universal, she has been playing delightfully opposite Matt Moore.

## Photoplay Magazine's Popular Players



GRACE DARMOND

is one of the youngest leading women in moving pictures. In "The House of a Thousand Candles" and "The Millionaire Baby," both Selig feature plays, she scored distinct personal triumphs. Her first acting experience was as Editha, in "Editha's Burglar," a legitimate play. Miss Darmond was born in Chicago eighteen years ago.

## Photoplay Magazine's Popular Players



CARLYLE BLACKWELL

was born in Troy, Penna., but early (was!) moved to Syracuse, N. Y. His first efforts were in musical comedy, "The Gay White Way," and several others. Later he joined Vitagraph, and then Kalem, where he built up a reputation as one of the most popular of leading men, his own Favorite Players following Kalem. His latest plays have been Lasky productions opposite Blanche Sweet.

Photoplay Magazine's Popular Players



VIOLET MERSEREAU

is about twenty years old and has played on the screen or stage nearly all her life. On the stage she played in "The Clansman" and made her greatest success in "Rebecca of Sunnybrook Farm." She played ingenue leads for Vitagraph, Pathé, and Biograph prior to joining the Universal. She leads in "Peg o' the Wilds" and "The Broken Toy."

## Photoplay Magazine's Popular Players



BEN WILSON

is one of the actor-directors of the Universal, coming to them from Edison where he made a name for himself in a similar capacity, playing the title role in the "Cleek" detective series. He was born in Corning, Iowa and began his theatrical life when fourteen. He played Broadway and in stock for many years before going into film productions.



Photoplay Magazine's Popular Players



VIVIAN RICH

was born on the Atlantic ocean and spent her early years in Philadelphia. Later the family moved to Boston and she completed her education at the Boston Latin High School. From high school she went to the stage and played in musical comedy before joining the American film company. She lives with her mother in Santa Barbara, California.

## Photoplay Magazine's Popular Players



MATT MOORE

was born in Ireland about twenty-seven years ago, but when six years old came with his parents to Toledo. First successful on the stage, playing in stock and on the road for several years, he transferred his talents to the screen and has long played opposite Mary Fuller with Universal. He is the only unmarried one of the three notable Moore brothers.

## Photoplay Magazine's Popular Players



BRYANT WASHBURN

who made a perfect transition from villainy to heroism, after serving the Essanay company in base capacities so long that virtue seemed impossible, is a native of Chicago, is in his fourth year in Essanay pictures, and came to the screen after thorough stage tuition, including roles in George Fawcett's vehicles, appearances with Percy Haswell in Toronto, and a year's starring tour in "The Wolf." Mr. Washburn is under thirty.

Photoplay Magazine's Popular Players



WILLIAM E. SHAY

is a New Yorker. He studied music in Paris and played two years in stock, following which he was with Mrs. Leslie Carter in "Heart of Maryland," "Du Barry," "Camille" and "La Tosca." In 1910 he joined the Imp company and continued with them until very recently. He was the King in "Neptune's Daughter," and Randor, the lead, in "Kreutzer Sonata."

## Photoplay Magazine's Popular Players



BETTY NANSEN

the great Danish emotional actress came to America about a year ago to play in Fox films. For many years she has been a great favorite in European theatres and has received marked distinction for her work. Her film portrayals in "Should a Mother Tell," "A Woman's Resurrection," "Anna Karenina" and "The Celebrated Scandal" are magnificent—intense, powerful, tragic.

Photoplay Magazine's Popular Players



NAOMI CHILDERS

Vitagraph's "Grecian Girl," was greatly in demand as an artist's model, a classic dancer and interpretative reader before she became a screen actress. That was in the days when she still lived in her St. Louis home, before Brooklyn called her to the camera. "The Spirit in the Clay," "Hearts of Women," and "The Crucible of Fate," are three of her better known films.

Photoplay Magazine's Popular Players



JAMES MORRISON

was born in Mattoon, Illinois, Nov. 15, 1888, and after graduating from University attended dramatic school and played for some time in vaudeville and on the road. He then joined Vitagraph and has remained with that company, appearing in "The Seventh Son," "The Christian," "In the Days of Famine," "Mortmain," "For the Honor of the Crew" and "The Battle Cry of Peace."

## Photoplay Magazine's Popular Players



LEAH BAIRD

was born in Chicago in 1887 and made her stage debut in 1907 in "The Mummy and the Humming Bird." and later played in "The Gentleman from Mississippi" company. With both Vitagraph and Universal she has become one of the most popular screen actresses, a tall brunette. She appeared in "Ivanhoe" with King Baggot, and later in "Absinthe." She is married.



## Photoplay Magazine's Popular Players



KING BAGGOT

says the best work of his six screen years with Universal is "Dr. Jekyll and Mr. Hyde" and "Ivanhoe." He has appeared in more than five hundred photoplays and was founder of the Screen Club of New York. King was born in St. Louis of Scotch parents 32 years ago. His early baseball ambitions gave place to a screen-preparatory career on the "legitimate" stage.

## Photoplay Magazine's Popular Players



EDITH STOREY

was born in New York, March 18, 1892, and made her first appearance on the vocal stage at the age of eight, and played with many famous stars in legitimate attractions. Her first appearance on the screen was with the Vitagraph Company of America with whom she is to this day. She lives on Riverside Drive, New York, and is an accomplished athlete.

Photoplay Magazine's Popular Players



ANTONIO MORENO

was born in Madrid, Spain, in 1886, and he played before the footlights in his native country before coming to America. First with Biograph, then Reliance and then Vitagraph he has acquired a large following among theatregoers. "Strongheart," "Good-bye, Summer," "John Rance, Gentleman," and "Song of the Ghetto" are among his better known films. He is very dark and five feet ten in height.

## Photoplay Magazine's Popular Players



VIVIAN MARTIN

ingenue lead of the World films began playing when seven years of age and has had a very bright career. On the stage she played in "Peter Pan," "Spendthrift," "Officer 666," and "Stop Thief," and on the screen in "Little Mademoiselle," "Over Night," "Wishing Ring," "Little Dutch Girl," "Little Miss Brown" and "The Butterfly on the Wheel." She is a Michigan girl, diminutive, blonde and blue eyed.

Photoplay Magazine's Popular Players



MIGNON ANDERSON

was on the stage a little while but hardly long enough to count. Her parents were players and she was born in Baltimore in 1892, joined Thanhouser in 1911 and has been with them ever since. She is very diminutive and a blonde. Playing in Thanhouser films brought about an acquaintance with Morris Foster, also of that company, and last spring she became his wife.

## Photoplay Magazine's Popular Players



MYRTLE STEDMAN

was born in Chicago, March 3, 1890, and played two years in opera and musical comedy, in "Fra Diavolo," "Mikado," "Carmen" and "Bohemian Girl." From Selig, which she joined in 1910, she went to Bosworth in 1913, and then to Morosco. In the "Valley of the Moon," "Hypocrites," "Wild Olive," "Peer Gynt" and "Kilmeny" her work has been especially good. She is five feet seven, a blonde with blue eyes.

Photoplay Magazine's Popular Players



MARGUERITE SNOW

joined Metro after she had long been a Thanhouser star, where she played in "The Million Dollar Mystery" as the Countess Olga. Miss Snow was born in Savannah, Sept. 9, 1891, and after finishing school in Denver, played with "Peter Pan," "Old Heidelberg," and "College Widow" companies. In private life she is Mrs. Jimmie Cruze and her chief delight is little Miss Julie, a coming star.

## Photoplay Magazine's Popular Players



**LOTTIE PICKFORD**

was born in Toronto, Canada, June 9th, 1895. She played for a number of years on the stage and in films, but came prominently before the photoplay public as Esther Stanley in "The Diamond from the Sky." She is five feet three inches tall, has brown eyes and brown hair, and is a sister of Jack and Mary Pickford. She is married to a non-professional.




## INDEX OF PORTRAITS

---

Geraldine Farrar	Viola Dana
Billie Burke	William Farnum
Lenore Ulrich	Ethel Clayton
David Wark Griffith	Ruth Stonehouse
Dorothy Gish	Marguerite Courtot
Thomas H. Ince	Helen Holmes
Norma Talmadge	Francis X. Bushman
Mack Sennett	Beverly Bayne
Fred Mace	Mary Pickford
Mabel Normand	Owen Moore
Roscoe Arbuckle	Julia Swayne Gordon
Douglas Fairbanks	Anita Stewart
Bessie Barriscale	Lillian Walker
William S. Hart	Mary Miles Minter
House Peters	J. Warren Kerrigan
Lillian Gish	Earle Williams
Alice Brady	Hobart Bosworth
Harold Lockwood	Tyrone Power
Marguerite Clark	Tom Forman
Spottiswoode Aitken	Ina Claire
Mae Marsh	Forrest Stanley
Cecil B. De Mille	Arnold Daly
Theodore Roberts	Ella Hall
Cleo Ridgely	Robert Leonard
Pearl White	Nance O'Neil

(Continued on next page)

INDEX OF PORTRAITS (Continued)

Anna Little	Dorothy Bernard
Edward Farle	Bessie Learn
Richard C. Travers	Clara Kimball Young
Grace Cunard	William Russell
Fay Tichner	Pauline Frederick
Mabel Trunnelle	Mary Fuller
Miriam Nesbitt	Grace Darmond
Blanche Sweet	Carlyle Blackwell
Marc MacDermott	Violet Mersereau
Rosemary Theby	Ben Wilson
Arthur V. Johnson	Vivian Rich
Thomas Santschi	Matt Moore
Kathlyn Williams	Bryant Washburn
Edna Purviance	William E. Shay
Charles Chaplin	Betty Nansen
Francis Ford	Naomi Childers
Florence La Badie	James Morrison
Mrs. Mary Maurice	Leah Baird
Henry B. Walthall	King Baggot
Herbert Rawlinson	Edith Storey
Ormi Hawley	Antonio Moreno
Crane Wilbur	Vivian Martin
Robert Warwick 	Mignon Anderson
Miriam Cooper	Myrtle Stedman
Theda Bara	Marguerite Snow
Dustin Farnum	Lottie Pickford











DOBBS BROS.  
LIBRARY BINDING

ST. AUGUSTINE  
FLA.

32084



LIBRARY OF CONGRESS



0 005 406 914 5