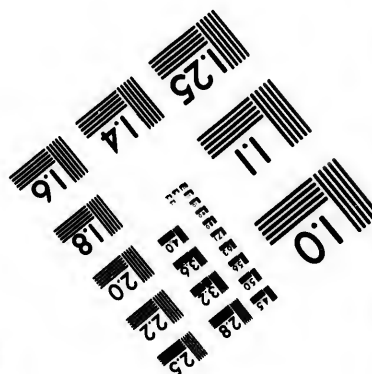
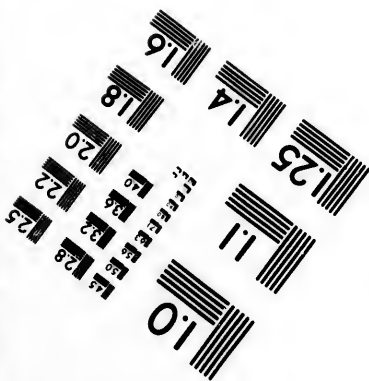
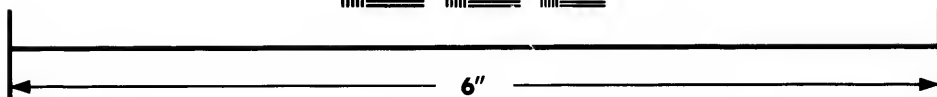
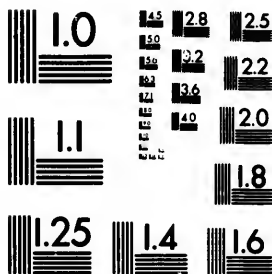


**IMAGE EVALUATION
TEST TARGET (MT-3)**



**Photographic
Sciences
Corporation**

23 WEST MAIN STREET
WEBSTER, N.Y. 14580
(716) 872-4503

1.8
2.0
2.2
2.5
3.2
3.6
4.5
5.4

**CIHM/ICMH
Microfiche
Series.**

**CIHM/ICMH
Collection de
microfiches.**



Canadian Institute for Historical Microreproductions / Institut canadien de microreproductions historiques

1.0
1.8
2.5

© 1982

Technical and Bibliographic Notes/Notes techniques et bibliographiques

The Institute has attempted to obtain the best original copy available for filming. Features of this copy which may be bibliographically unique, which may alter any of the images in the reproduction, or which may significantly change the usual method of filming, are checked below.

L'Institut a microfilmé le meilleur exemplaire qu'il lui a été possible de se procurer. Les détails de cet exemplaire qui sont peut-être uniques du point de vue bibliographique, qui peuvent modifier une image reproduite, ou qui peuvent exiger une modification dans la méthode normale de filmage sont indiqués ci-dessous.

- Coloured covers/
Couverture de couleur
- Covers damaged/
Couverture endommagée
- Covers restored and/or laminated/
Couverture restaurée et/ou pelliculée
- Cover title missing/
Le titre de couverture manque
- Coloured maps/
Cartes géographiques en couleur
- Coloured ink (i.e. other than blue or black)/
Encre de couleur (i.e. autre que bleue ou noire)
- Coloured plates and/or illustrations/
Planches et/ou illustrations en couleur
- Bound with other material/
Relié avec d'autres documents
- Tight binding may cause shadows or distortion along interior margin/
La reliure serrée peut causer de l'ombre ou de la distortion le long de la marge intérieure
- Blank leaves added during restoration may appear within the text. Whenever possible, these have been omitted from filming/
Il se peut que certaines pages blanches ajoutées lors d'une restauration apparaissent dans le texte, mais, lorsque cela était possible, ces pages n'ont pas été filmées.
- Additional comments:/
Commentaires supplémentaires:
- Coloured pages/
Pages de couleur
- Pages damaged/
Pages endommagées
- Pages restored and/or laminated/
Pages restaurées et/ou pelliculées
- Pages discoloured, stained or foxed/
Pages décolorées, tachetées ou piquées
- Pages detached/
Pages détachées
- Showthrough/
Transparence
- Quality of print varies/
Qualité inégale de l'impression
- Includes supplementary material/
Comprend du matériel supplémentaire
- Only edition available/
Seule édition disponible
- Pages wholly or partially obscured by errata slips, tissues, etc., have been refilmed to ensure the best possible image/
Les pages totalement ou partiellement obscurcies par un feuillet d'errata, une pelure, etc., ont été filmées à nouveau de façon à obtenir la meilleure image possible.

This item is filmed at the reduction ratio checked below/
Ce document est filmé au taux de réduction indiqué ci-dessous.

10X	14X	18X	22X	26X	30X
<input type="checkbox"/>	<input type="checkbox"/>	<input checked="" type="checkbox"/>	<input type="checkbox"/>	<input type="checkbox"/>	<input type="checkbox"/>
12X	16X	20X	24X	28X	32X

The copy filmed here has been reproduced thanks to the generosity of:

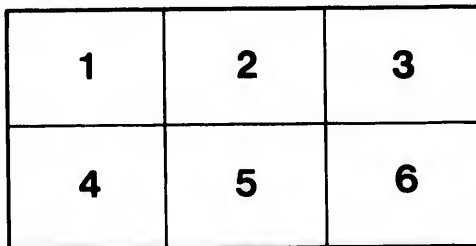
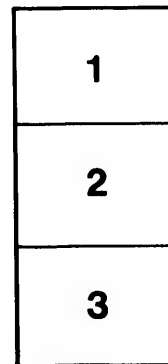
Library of the Public
Archives of Canada

The images appearing here are the best quality possible considering the condition and legibility of the original copy and in keeping with the filming contract specifications.

Original copies in printed paper covers are filmed beginning with the front cover and ending on the last page with a printed or illustrated impression, or the back cover when appropriate. All other original copies are filmed beginning on the first page with a printed or illustrated impression, and ending on the last page with a printed or illustrated impression.

The last recorded frame on each microfiche shall contain the symbol \rightarrow (meaning "CONTINUED"), or the symbol ∇ (meaning "END"), whichever applies.

Maps, plates, charts, etc., may be filmed at different reduction ratios. Those too large to be entirely included in one exposure are filmed beginning in the upper left hand corner, left to right and top to bottom, as many frames as required. The following diagrams illustrate the method:



L'exemplaire filmé fut reproduit grâce à la générosité de:

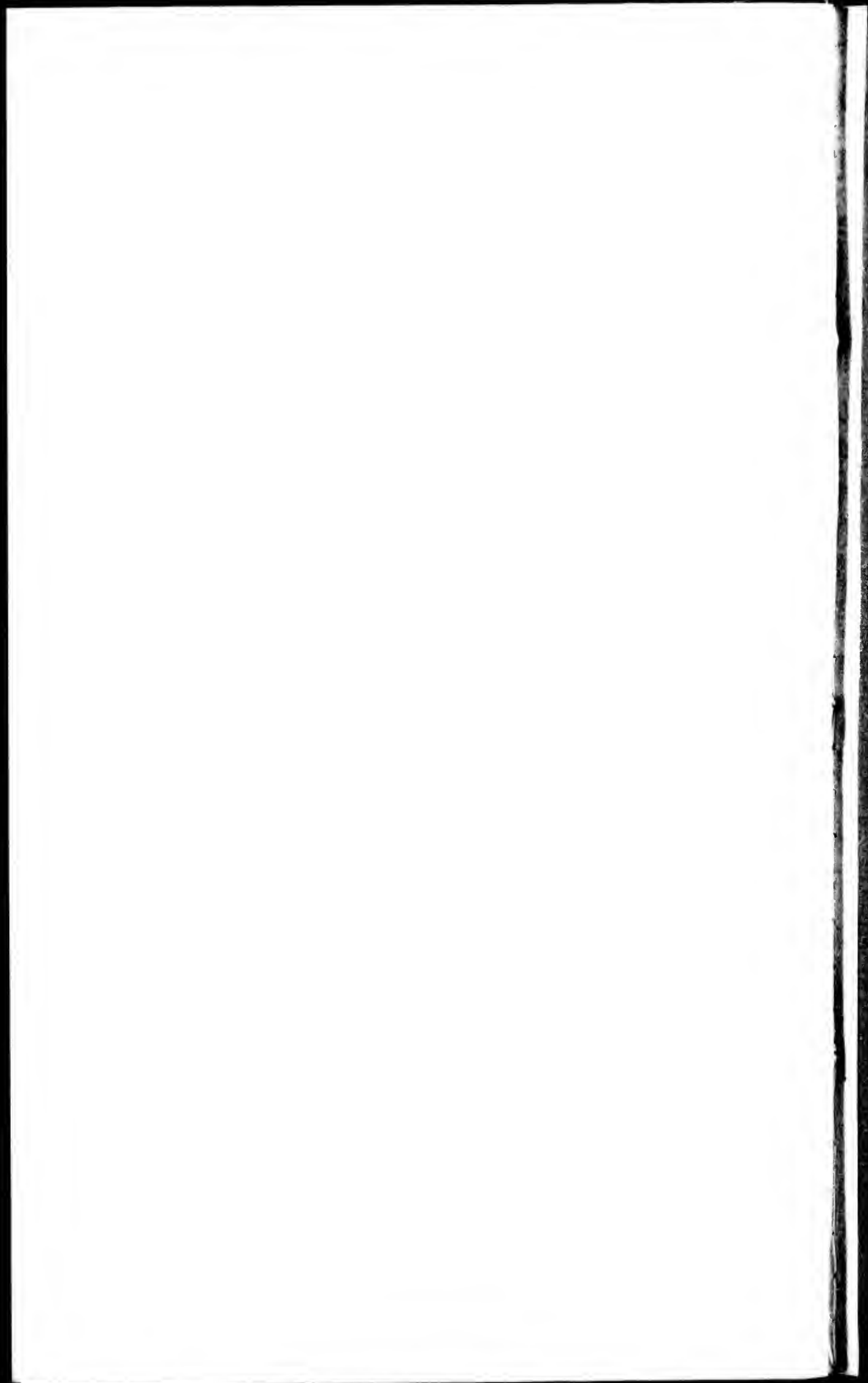
La bibliothèque des Archives
publiques du Canada

Les images suivantes ont été reproduites avec le plus grand soin, compte tenu de la condition et de la netteté de l'exemplaire filmé, et en conformité avec les conditions du contrat de filmage.

Les exemplaires originaux dont la couverture en papier est imprimée sont filmés en commençant par le premier plat et en terminant soit par la dernière page qui comporte une empreinte d'impression ou d'illustration, soit par le second plat, selon le cas. Tous les autres exemplaires originaux sont filmés en commençant par la première page qui comporte une empreinte d'impression ou d'illustration et en terminant par la dernière page qui comporte une telle empreinte.

Un des symboles suivants apparaîtra sur la dernière image de chaque microfiche, selon le cas: le symbole \rightarrow signifie "A SUIVRE", le symbole ∇ signifie "FIN".

Les cartes, planches, tableaux, etc., peuvent être filmés à des taux de réduction différents. Lorsque le document est trop grand pour être reproduit en un seul cliché, il est filmé à partir de l'angle supérieur gauche, de gauche à droite, et de haut en bas, en prenant le nombre d'images nécessaire. Les diagrammes suivants illustrent la méthode.



THE NEWFOUNDLAND
ALMANAC,

FOR THE YEAR OF OUR LORD

1868,

[BEING BISSEXTILE, OR LEAP YEAR, AND THE LATTER PART OF THE
THIRTY-FIRST AND THE BEGINNING OF THE THIRTY-
SECOND YEAR OF THE REIGN OF HER
MAJESTY QUEEN VICTORIA.]

CONTAINING

**Astronomical, Statistical, Commercial, Local
and General Information,**

DERIVED FROM THE MOST AUTHENTIC SOURCES.

—ALSO,—

A Post Office Directory for Newfoundland,

CONTAINING AN ALPHABETICAL LIST OF THE TOWNS, VILLAGES AND
SETTLEMENTS IN THE COLONY, WITH THE POST
TOWNS AND WAY OFFICES:

—AND, ALSO,—

A Business Directory,

*FOR THE TOWNS OF ST. JOHN'S, HARBOR GRACE,
AND CARBONEAR,*

IN WHICH WILL BE FOUND THE NAMES, ADDRESS AND OCCUPATION
OF PERSONS ENGAGED IN THE VARIOUS DEPARTMENTS OF
MERCANTILE AND OTHER BUSINESS PURSUITS.

COMPILED, PRINTED AND PUBLISHED BY

JOSEPH WOODS.

Sold by THOMAS MCCONNAN, 201 Water Street, St. John's.

ST. JOHN'S, NEWFOUNDLAND:

MDCCLXVII.

RARE
AY
420
N149N4
1868

To the Public.

THE Undersigned has much pleasure in laying before the Public the NEWFOUNDLAND ALMANAC FOR THE YEAR OF OUR LORD 1868, and hopes that due consideration will be made for such imperfections or inaccuracies as may be found in its pages. He has spared neither labor nor expense to make it a useful book of reference, and trusts it will be found equal if not superior to its predecessors.

In addition to the information usually embraced in the pages of THE ALMANAC, there is added to the present Number a concise BUSINESS DIRECTORY for the three principal towns of the Colony—St. John's, Harbor Grace, and Carbonear; and as it is intended that the ALMANAC will be extensively circulated out of Newfoundland, by having copies placed on the tables of the principal Exchange Reading Rooms in the leading Cities and Commercial Towns of Great Britain, the United States, and the Dominion of Canada, the information embodied in THE DIRECTORY cannot fail to be useful to all who have an interest in the Trade and Commercial Relations of this Colony.

The Compiler is again indebted to JAMES CAMPBELL, Esq., the worthy and talented Principal of the St. John's Nautical Academy, for the Astronomical Calculations and other Scientific information contained in the introductory and Calendar pages of the present work. To the Heads of Departments, and others, he is also indebted for their kindness in furnishing all necessary information.

The Compiler would express his acknowledgments to the general public for the very favorable manner in which THE ALMANAC has been received hitherto, and he indulges the hope that *that* for 1868 will be equally favored, and command if possible a still larger share of public support. To the advertising patrons of THE ALMANAC the undersigned is indebted for their *substantial* favors, and hopes that the efforts made to give their notices an attractive form will meet with their approval.

JOSEPH WOODS,

St. John's, Nov., 1867.

A
A
A
A
B
B
B
B
Ba
Ba
Be
Bu
Ca
Co
Co
Co
Co
Co
Co
Co
Co
Co
Cha
Cat
Dif
Dep
Dis
Ecl
Exe
Edu
Ecc
Fixe
Fina
Fore
Gov
Gao

Contents.

Advertisements	75
Atlantic Telegraph Company	75
Anglo-American Telegraph Company	78
Abstract from Newfoundland Census of 1857	26
Board of Works Department	27
Boards of Road Commissioners (Outports)	54
Board of Health	52
Banks—Savings' Bank	67
Union Bank of Newfoundland	67
Commercial Bank of Newfoundland	54
Barristers and Attornies Supreme Court	54
Barristers and Attornies, Northern District	82
Benevolent Institutions, Charitable Societies, &c.	85
Business Directory for St. John's, Harbor Grace and Carbonear	9-20
Calendar Pages—Moon's Phases, Sun's Rising and Setting at St. John's every day in the year, Sun's Declination, Equation of Time, High Water at St. John's every Morning and Afternoon, Moon's Rising, Memoranda	25
Colonial Secretary's Office	30
Court Houses and Keepers	30
Commissioners for Erection of Public Wharf (Catalina)	52
Commissioners for Erection of Breakwaters	53
Commissioners of Wrecked Property	53
Commissioners of Poor	53
Commissioners for Reduction of Public Debt	53
Commissioners of Pilots and Rates of Pilotage	51
Commissioners of Affidavits, &c., in S. and C. Courts	59
Colonial and Continental Church Society	67
Chamber of Commerce, (St. John's)	74
Catholic Institute	8
Difference of Time at various places on the Globe as com- pared with St. John's	24
Departmental Officers of the Government	30
District Surgeons	5
Eclipses for the year 1863	23
Executive Council	53
Educational Institutions, Protestant and Roman Catholic	63
Education Boards, &c., &c.	8
Ecclesiastical Department, &c. &c.	26
Fixed and Moveable Festivals, Anniversaries, &c.	63
Financial Secretary's Office	23
Foreign Consuls	29
Governor, Commander-in-Chief and Vice-Admiral of New- foundland	29
Goals and Gaolers	29

House of Assembly	24
Her Majesty's Chief Officers of State	22
Health Wardens (St. John's)	54
Inspectors of Weights and Measures	57
Insurance Companies— Fire, Life, and Marine	79
Judicial Department, comprising Lists of Barristers and Attornies of Supreme Court, Stipendiary Magistrates, Justices of the Peace, &c., &c.	54
Joint Stock Companies, Public Societies, &c.	81
Legislative Council	23
Light Houses and Lights	31
Medical Officer for Sick Seamen (Port of St. John's)	54
Military Establishment	69
Masonic Lodges	74
Newfoundland Wesleyan Academy	58
Newfoundland Church Society	64
Newfoundland Rifle Volunteers	70
Naval Establishment	70
Notaries Public	67
Newspapers published in the Colony	68
New York, Newfoundland and London Telegraph Company	75
Planetary Notice—Solar System	5
Post Office Department, including Postal Routes, Rates of Postage, and Post Office Directory for Newfoundland	34-52
Queen's Printer	67
Royal Family of England	21
Revenue Establishment, &c., &c.	25
Revenue and Expenditure, from 1857 to 1866	77
Return of Vessels Entered and Cleared at each Port in the Colony of Newfoundland for the Year 1866.	77
Surveyor General's Department	26
Superintendent of Mercantile Marine	26
St. John's Hospital	80
St. John's Poor House	30
St. John's Lunatic Asylum	30
Stipendiary Magistrates	56
St. John's Academy	58
St. John's Athenæum	74
St. John's and Newfoundland Bible Society	73
Ships Owned and Registered in Newfoundland	76
Value of Imports and Exports from and to each Country in 1866	76
Table for telling the Weather through all the Lunations of each Year, for ever	7
Treasury Department	26
Table of Customs Duties	71
Table shewing Quantity and Value of Fish Exported from 1841 to 1866	76
Value of Imports and Exports from 1856 to 1866	79
Wesleyan School and Agency Society	59
Wesleyan Academic Literary Institute	74

Eclipses, 1868.

In the Year 1868 there will be no *Eclipse of the MOON*, but of the *SUN* there will be *Two Eclipses*, and also a *Transit of the planet Mercury over the Sun's disc*, but none of these phenomena will be visible in Newfoundland.

The first will be an *Annular Eclipse of the Sun*, February 22-23. The limiting lines of observation from the Earth, are, from 25.20 E. to 94.40 W. Long., and 14.26 S. to 19.26 N. Lat.

The second will be a *total Eclipse of the Sun*, August 17th.—This Eclipse will not be visible either in Europe or America, but will be visible in the Eastern part of the Pacific Ocean, in all Australia, the Indian Ocean, Abyssinia and other parts of Africa, but not visible in New Zealand.

The *Transit of Mercury over the Sun's disc*, November the 5th. Its external contact at Ingress will be at 1h. 54m. A.M., and its Egress at 5h. 32m. A.M. at Newfoundland, and thus must necessarily be invisible. It will be visible from 40.12 E. to 94.46 E. of Greenwich, and on the parallel of Lat. 15.54 S., on this line the Sun will be in the zenith while the Planet is transiting his disc.

Planetary Notice.

The Planets of the Solar System are 29 in number. Of them, 11 are *primary*, and 18 *secondary*, or Moons. Of these Moons, our EARTH has one, *Jupiter* four, *Saturn* seven, and *Uranus* six. Of the primary planets, two are called *inferior*, viz., *Mercury* and *Venus*, because they are nearer the *Sun* than the *Earth*; the others are called *superior*, because farther from the *Sun* than the *Earth*.

<i>Distance from the Sun.</i>	<i>Magnitude—diameters in miles.</i>	<i>Len. of year.</i>
Mercury, 37 millions of miles	3,140	3 months.
Venus, 68 millions of miles	7,700	7½ do.
Earth, 95 millions of miles	7,912	1 year.
Mars, 142 millions of miles	4,200	2 do.
Jupiter, 485 millions of miles	89,000	12 do.
Saturn, 890 millions of miles	79,000	29 do.
Uranus, 1800 millions of miles	35,000	84 do.

This Year Venus will be an Evening Star till the 16th of July, and from that day to the end of the year will be a Morning Star.

About the middle of May, Venus will be at her greatest distance from the Sun, when she will set 3h. 10m. after him, and about the 22nd September she will rise 3h. 4m. before him.

Mars (remarkable for his great brilliancy and deep blood-red colour) will set after the Sun from the first till the seventh of January, but will rise before him for the rest of the year.

Jupiter will set after the Sun, and thus will be an Evening Star till the 13th of March, from this date to the 29th September, he will be a Morning Star, and from this latter date to the end of the year will be an Evening Star.

The Eclipses of Jupiter's Satellites (given in the Greenwich Almanac to the nearest tenth of one second of time) afford the easiest means of knowing the Greenwich time, and thence to determine the longitude of whatever place on the globe, the observer may be situated. No calculation is required, but they cannot be observed at sea, the motion of the Ship rendering it impossible to secure that steadiness of the instruments necessary to observe them.

St. John's.

True Latitude of Church Hill	47.34 North.
Longitude (West of Greenwich)	52.42 West.

NOTE.—The Tide Tables (in the Calendar pages) may be rendered applicable to various other places on the coast, by simply adding or subtracting, as the case may be, the difference between the times of High Water on the Full and Change of the Moon at St John's, and the time of the full tide at any other harbor; for example, to find the time of High Water at any of the principal harbors of Conception Bay, add 45 minutes to the time at which it will be High Water at St. John's; for Placentia Bay, add 2 hours; for St. Peters, 1h. 50m.; for Ferrolle, on the French Shore, 4 hours, &c. —See table LVII. of Norie's Epitome.

A Table

For telling the Weather through all the Lunations of each Year, for ever.

This table is the result of many years' actual observation; the whole being constructed on a due consideration of the attraction of the Sun and Moon, in their several positions respecting the Earth, and will, by simple inspection, show the observer what kind of weather will most probably follow the entrance of the Moon into any of its quarters, and that so near the truth as to be seldom or never found to fail.

MOON.	TIME OF CHANGE.	IN SUMMER.		IN WINTER.
If the New Moon—the first Quarter—the Full Moon—or the last Quarter, happens	Between midnight and 2 in the morning.	Fair.	Hard frost unless the wind be south or west.	
	Between 2 and 4 morning.	Cold with frequent showers.	Snow and stormy.	
	Between 4 and 6 morning.	Rain.	Rain.	
	Between 6 and 8 morning.	Wind and rain.	Stormy.	
	Between 8 and 10 morning.	Changeable.	Cold rain if wind be west.	
	Between 10 and 12 morning.	Frequent showers.	Snow, if east.	
	At 12 o'clock, at noon, and 2 P.M.	Very rainy.	Snow or rain.	
	Between 2 and 4 P.M.	Changeable.	Fair and mild.	
	Between 4 and 6 P.M.	Fair.	Fair.	
	Between 6 and 8 P.M.	Fair if wind N. W.	Fair and frosty if wind N. or N. E.	
Between 8 and 10 P.M.	Rainy if S. or S. W.	Rain or snow, if S. or S. E.		
Between 10 and midnight.	Ditto.	Ditto.		
“	Fair.	Fair and frosty.		

OBSERVATIONS.

1. The nearer the times of the Moon's change, full and last quarter, are to midnight, the fairer will the weather be during the seven days following.
2. The space of this calculation occupies from ten at night till two next morning.
3. The nearer to midday or noon the phases of the moon happen, the more foul or wet weather may be expected during the next seven days.
4. The space of this calculation occupies from ten in the forenoon to two in the afternoon.—These observations refer principally to the summer, though they affect spring and autumn, nearly in the same ratio.
5. The moon's changes—first quarter—full, and last quarter, happening during six of the afternoon hours, i. e., from four to ten, may be followed by fair weather; but this is mostly dependent upon the wind, as is noted in table.

Calendar.

Golden Number	7	Dominical Letters	ED
Epaot	6	Roman Indiction	11
Solar Cycle	1	Julian Period	6581

Fixed and Moveable Festivals, Anniversaries, &c.

Epiphany	January	6	Ascension Day	May	21
Septuagesima Sunday	Feb.	9	Birth of Queen Victoria	"	24
Quinquagesima	"	23	Pentecost	"	31
Ash Wednesday	"	26	Trinity Sunday	June	7
St. David	March	1	Corpus Christi	"	11
First Sunday in Lent	"	1	Accession of Q. Victoria	"	20
St. Patrick	"	17	Proclamation	"	21
Annunciation—Lady Day	"	25	St. John Baptist	"	24
Palm Sunday	April	5	St. Michael	Sept.	29
Good Friday	"	10	Birth Prince of Wales	Nov.	9
Easter Sunday	"	12	First Sunday in Advent	"	29
Low Sunday	"	19	St. Andrew	"	30
St. George	"	23	St. Thomas	Dec.	21
Rogation Sunday	May	17	Christmas Day	"	25

The Year 5629 of the Jewish Era commences on Sept. 17, 1868.

Ramadân (Month of Abstinence observed by the Turks) commences on December 16, 1868.

The Year 1285 of the Mohammedan Era commences on April 24, 1868

A Table

Shewing the difference of Time at various places on the Globe, as compared with St. John's, Newfoundland.

When it is NOON at St. John's it is

	{	18	minutes	past	11	o'clock,	A.M.	at	Charlottetown,	P.E.I.
	{	17	do		11	do			Halifax.	
	{	13	do		11	do			St. John, N.B.	
	{	50	do		10	do			Portland, Me.	
	{	47	do		10	do			Boston, Mass.	
	{	46	do		10	do			Quebec.	
	{	34	do		10	do			New York.	
	{	30	do		10	do			Philadelphia.	
	{	23	do		10	do			Washington	
	{	21	do		7	do			St. Francisco, California.	
	{	14	do		7	do			St. Juan, Vancouver's Island.	
	{	30	do		3	P.M.			Greenwich.	
	{	20	do		4	do			Rome.	
	{	26	do		5	do			Constantinople.	
	{	52	do		5	do			Jerusalem.	
	{	50	do		8	do			Madras, E.I.	
	{	8	do		11	do			Canton.	

January, 1868.

MOON'S PHASES.

FIRST QUARTER 3rd day, 0h, 32m, Morning
 FULL MOON 9th day, 7h, 22m, Evening
 LAST QUARTER 16th day, 1h, 33m, Evening
 NEW MOON 24th day, 3h, 47m, Evening

Day of W.	Day of M.	Sun		G. app. time.		High			Moon's Rising. Memo- randa, &c.
		rises	sets	Sun's Decli- nation.	Equa- of time. add.	Water at St. John's.			
		h.	m.	o	m. s	p.	m.	a. m.	
W	1	7 55	4 13	S 23 3	3 37	11 48	11 28		First Colonial Legis- lature met, 1833.
Th.	2	7 54	4 14	22 58	4 5	0 9			
F	3	7 54	4 15	22 53	4 33	0 52	0 30		
S	4	7 54	4 16	22 47	5 1	1 45	1 15		
Su.	5	7 54	4 17	22 41	5 28	2 55	2 19		Epiphany.
M	6	7 54	4 19	22 34	5 55	4 5	3 29		9—R. Catholic Cathe- dral opened, 1850.
T	7	7 53	4 20	22 27	6 21	5 16	4 42		
W	8	7 53	4 21	22 19	6 47	6 15	5 45		
Th	9	7 53	4 22	22 11	7 12	7 9	6 43		Moon rises 3 minutes past 6, evening.
F	10	7 52	4 24	22 2	7 36	8 0	7 34		Moon rises 34 minutes past 8, evening.
S	11	7 52	4 25	21 53	8 1	8 51	8 26		Moon rises 56 minutes past 10 evening.
St.	12	7 51	4 26	21 44	8 24	9 39	9 16		Moon rises 19 minutes past 1, morning.
M	13	7 51	4 27	21 34	8 47	10 26	10 3		Moon rises 13 minutes past 3, morning.
T	14	7 50	4 29	21 24	9 9	11 12	10 49		Moon rises 7 minutes past 5, morning.
W	15	7 50	4 30	21 13	9 31	12 0	11 37		
Th	16	7 49	4 31	21 2	9 52	0 24			
F	17	7 48	4 33	20 51	10 12	1 13	0 48		
S	18	7 47	4 34	20 39	10 32	2 11	1 41		
Su.	19	7 46	4 36	20 27	10 51	3 23	2 47		3rd Sun. after Epiphy.
M	20	7 45	4 37	20 14	11 9	4 36	3 58		Colonial Building op- ened, 1850.
T	21	7 44	4 38	20 1	11 27	5 44	5 2		
W	22	7 44	4 40	19 48	11 44	6 38	6 2		
Th	23	7 43	4 42	19 34	12 00	7 23	7 1		
F	24	7 42	4 43	19 20	12 15	8 3	7 44		
S	25	7 41	4 45	19 5	12 30	8 38	8 20		
Su.	26	7 40	4 46	18 50	12 43	9 12	8 56		
M	27	7 38	4 48	18 35	12 56	9 42	9 27		
T	28	7 37	4 49	18 20	13 8	10 14	9 59		
W	29	7 36	4 51	18 4	13 19	10 45	10 29		
Th	30	7 35	4 52	17 48	13 30	11 21	11 3		
F	31	7 33	4 54	S 17 31	13 39	11 59	11 39		

MISTS.—A white mist in the evening over a meadow with a river, will be drawn up by the sun next morning, and the day will be bright. Five or six fogs successively drawn up, portend rain.—Where the mist which hangs over low lands, draws towards high hills in the morning, and rolls up to the top, it will be fair; but if the mist hangs upon the hills, and drags along the woods, there will be rain.

March, 1868.

MOON'S PHASES.

FIRST QUARTER.....	2d day,	1h, 18m,	Morning
FULL MOON.....	8th day,	4h, 51m,	Evening
LAST QUARTER.....	15th day,	11h, 53m,	Evening
NEW MOON.....	24th day,	3h, 28m,	Morning
FIRST QUARTER.....	30th day,	8h, 55m,	Morning

Day of W.	Day of M.	Sun rises		Sun sets		G. app. time.		High Water at St. John's.	Moon's Rising, Memo-randa, &c.		
		h.	m.	h.	m.	Sun's Declination.	Equa. of time. add.				
SU.	1	6	45	5	39	S	7 23	12 28	11 52	First Sunday in Lent.	
M	2	6	44	5	41		7 1	12 15	0 36	0 12	J. Wesley died, 1791.
T	3	6	42	5	42		6 38	12 2	1 32	1 2	
W	4	6	40	5	44		6 14	11 49	2 50	2 7	1—St. David.
Th.	5	6	38	5	45		5 51	11 35	4 19	3 35	
F	6	6	36	5	47		5 28	11 21	5 43	5 3	17—St. Patrick.
S	7	6	34	5	48		5 5	11 6	6 43	6 15	
Su.	8	6	32	5	50		4 41	10 51	7 37	7 11	Moon rises 5 minutes
M	9	6	30	6	51		4 18	10 36	8 22	8 0	past 6, evening.
T	10	6	28	5	53		3 54	10 20	9 5	8 45	Moon rises 33 minutes
W	11	6	26	5	54		3 31	10 4	9 47	9 27	past 8, evening.
Th.	12	6	24	5	56		3 7	9 47	10 27	10 7	Moon rises 48 minutes
F	13	6	22	5	57		2 44	9 31	11 6	10 47	past 10, evening.
S	14	6	20	5	58		2 20	9 14	11 42	11 24	Moon rises 50 minutes
Su.	15	6	18	5	59		1 56	8 56	0 3		past 12, evening.
M	16	6	16	6	1		1 33	8 39	0 48	0 24	Moon rises 44 minutes
T	17	6	14	6	3		1 9	8 22	1 41	1 12	past 1, morning.
W	18	6	12	6	4		0 45	8 4	2 56	2 16	Moon rises 6 minutes
Th.	19	6	10	6	6		0 21	7 46	4 20	3 37	past 3, morning.
F	20	6	8	6	7	S	0 2	7 28	5 34	5 0	Moon rises 31 minutes
S	21	6	6	6	8	N	0 26	7 10	6 32	6 5	past 4, morning.
Su.	22	6	4	6	10		0 50	6 52	7 13	6 54	Moon rises 31 minutes
M	23	6	2	6	11		1 13	6 33	7 49	7 32	past 5, morning.
T	24	6	0	6	13		1 37	6 15	8 20	8 5	
W	25	5	58	6	14		2 0	5 57	8 54	8 37	Annunciation — Lady
Th.	26	5	56	6	16		2 24	5 38	9 25	9 9	[Day.
F	27	5	54	6	17		2 47	5 20	9 59	9 41	
S	28	5	52	6	18		3 11	5 2	10 34	10 17	
Su.	29	5	50	6	19		3 34	4 43	11 12	10 53	
M	30	5	48	6	21		3 57	4 25	11 55	11 32	
T	31	5	46	6	23	N	4 21	4 7	0 20		

sign of rain, and probably will be lasting. Two currents of clouds always portend rain, and, in summer, thunder.

DEW.—If the dew lies plentifully on the grass after a fair day, it is a sign of another. If not, and there is no wind, rain must follow. A red evening portends fine weather; but if it spread too far up.

April, 1868.

MOON'S PHASES.

FULL MOON..... 7th day, 3h, 46m, Morning
 LAST QUARTER..... 14th day, 7h, 4m, Evening
 NEW MOON..... 22d day, 4h, 49m, Evening
 FIRST QUARTER..... 29 h day, 2h, 47m, Evening

Day of W.	Day of M.	Sun		G. app. time.		High		Moon's Rising, Memo- randa; &c.
		rises at St. John's.	Sun- sets at St. John's.	Sun's Decli- nation.	Equa. of time.	Water at St. John's.	Water at St. John's.	
		h. m.	h. m.	o	m. s.	p. m.	a. m.	
W	1	5 44	6 24	N 4 44	3 49	1 16	0 46	10- Good Friday.
Th	2	5 42	6 25	5 7	3 31	2 36	1 53	
F	3	5 40	6 27	5 30	3 13	4 8	3 22	
S	4	5 38	6 28	5 53	2 55	5 27	4 51	
Su.	5	5 36	6 30	6 16	2 37	6 27	6 0	Palm Sunday.
M	6	5 34	6 31	6 38	2 20	7 19	6 53	Moon rises 8 minutes past 6, evening.
T	7	5 32	6 32	7 1	2 2	8 1	7 40	Moon rises 30 minutes past 8, evening.
W	8	5 31	6 33	7 23	1 45	8 43	8 23	Moon rises 39 minutes past 10, evening.
Th.	9	5 28	6 35	7 45	1 29	9 21	9 2	Moon rises 27 minutes past 12, evening.
F	10	5 26	6 36	8 8	1 12	10 0	9 41	
S	11	5 24	6 38	8 30	0 56	10 36	10 18	
Su.	12	5 22	6 39	8 52	0 40	11 11	10 54	
M	13	5 20	6 41	9 13	0 24	11 51	11 30	
T	14	5 18	6 42	9 35	0 9	0 13		
W	15	5 16	6 44	9 56	0 6	1 2	12 37	
Th.	16	5 15	6 45	10 18	0 20	2 10	1 34	Moon rises 3 minutes past 3, morning.
F	17	5 13	6 46	10 39	0 34	3 50	2 50	Moon rises 2 minutes past 4, morning.
S	18	5 11	6 48	11 0	0 48	4 46	4 8	Moon rises at 5, morn- ing.
Su.	19	5 9	6 49	11 20	1 1	5 49	5 20	
M	20	5 7	6 50	11 41	1 14	6 35	6 14	
T	21	5 5	6 52	12 1	1 26	7 13	6 55	
W	22	5 4	6 53	12 21	1 38	7 47	7 29	
Th.	23	5 2	6 54	12 41	1 50	8 23	8 4	St. George's
F	24	5 0	6 56	13 1	2 1	8 59	8 40	
S	25	4 58	6 57	13 21	2 11	9 34	9 17	12 - Easter Sunday.
Su.	26	4 56	6 59	13 40	2 21	10 13	9 54	
M	27	4 55	7 0	13 59	2 31	10 55	10 33	13 - Cath. Eman., 1829.
T	28	4 53	7 2	14 18	2 40	11 42	11 18	
W	29	4 51	7 3	14 37	2 49	0 8		19 - Low Sunday.
Th.	30	4 50	7 4	N 14 55	2 57	1 11	0 39	

Equation of time to be added to apparent time to the 14th, and to be subtracted the remainder of the month.

ward from the horizon in the evening, and especially morning, it foretells wind or rain, or both. When the sky, in rainy weather, is tinged with sea green, the rain will increase; if with deep blue, it will be showery.

May, 1868.

MOON'S PHASES.

FULL MOON..... 6th day, 3h, 6m, Evening
 LAST QUARTER 14th day, 1h, 44m, Evening
 NEW MOON..... 22d day, 3h, 5n, Morning
 FIRST QUARTER..... 29th day, 8h, 11m, Evening

Day of W.	Day of M.	Sun		G. app. time.		High		Moon's Rising, Memo- randa, &c.
		rises	Sun sets	Sun's Decli- nation.	Equa of time.	Water at St. John's.		
		at St. John's.	at St. John's.	o	m. s.	p.	m. a. m.	
F	1	4 48	7 6	N 15 13	3 4	2 30	1 48	S.S. Philip and James.
Su	2	4 47	7 7	15 31	3 11	3 53	3 12	
S	3	4 45	7 8	15 49	3 18	5 6	4 32	5—Napol. died, 1821.
M	4	4 43	7 10	16 6	3 24	6 7	5 39	
T	5	4 42	7 11	16 23	3 29	6 56	6 32	Moon rises 11 minutes
W	6	4 40	7 12	16 40	3 34	7 41	7 19	past 6, evening.
Th.	7	4 39	7 14	16 57	3 39	8 21	8 1	Moon rises 23 minutes
F	8	4 38	7 15	17 13	3 42	8 57	8 40	past 8, evening.
S	9	4 36	7 16	17 29	3 45	9 33	9 15	Moon rises 19 minutes
Su.	10	4 35	7 18	17 45	3 48	10 10	9 52	past 10, evening.
M	11	4 33	7 19	18 0	3 50	10 47	10 29	Moon rises 51 minutes
T	12	4 32	7 20	18 15	3 51	11 24	11 5	past 11, evening.
W	13	4 31	7 21	18 30	3 52		11 46	Moon rises 3 minutes
Th.	14	4 29	7 23	18 45	3 52	0 33	0 9	past 1, morning.
F	15	4 28	7 24	18 59	3 52	1 27	0 58	Moon rises 2 minutes
S	16	4 27	7 25	19 13	3 51	2 38	2 1	past 2, morning.
Su.	17	4 26	7 27	19 26	3 50	3 48	3 14	Moon rises 56 minutes
M	18	4 24	7 28	19 40	3 48	4 53	4 21	past 2, morning.
T	19	4 23	7 29	19 52	3 45	5 49	5 22	Moon rises 54 minutes
W	20	4 22	7 30	20 5	3 42	6 32	6 11	past 3, morning.
Th.	21	4 21	7 31	20 17	3 38	7 15	6 54	
F	22	4 20	7 32	20 29	3 33	7 54	7 34	
S	23	4 19	7 33	20 40	3 29	8 35	8 14	
Su.	24	4 18	7 34	20 52	3 23	9 17	8 56	Q. Victoria born, 1819.
M	25	4 17	7 35	21 2	3 17	10 0	9 37	
T	26	4 16	7 36	21 13	3 11	10 46	10 23	17—Rogation Sunday
W	27	4 15	7 38	21 23	3 4	11 36	11 10	20—Fou. stone Catho. Cath. laid, 1811.
Th.	28	4 14	7 40	21 33	2 57	0 3		
F	29	4 13	7 41	21 42	2 49	1 5	0 33	21—Ascension Day.
S	30	4 13	7 41	21 51	2 41	2 19	1 41	
Su.	31	4 12	7 42	N 21 59	2 33	3 29	2 56	Pentecost.

HEAVENLY BODIES.—If there be a haziness in the air which fades the sun's light, and makes the orb appear whitish, or ill defined; or, at night, if the moon and stars grow dim, and a ring encircles the former, rain will follow. If the sun's rays appear like Moses' horns, if white at setting, or shorn of his rays, or goes down into a bank of cloud in the horizon, bad weather is to be expected. If the moon.

June, 1868.

MOON'S PHASES.

FULL MOON..... 5th day, 3h, 24m, Morning
 LAST QUARTER... 13th day, 6h, 43m, Morning
 NEW MOON..... 20th day, 11h, 14m, Morning
 FIRST QUARTER..... 27th day, 2h, 20m, Morning

Day of W.	Day of M.	Sun rises		Sun sets		G. app. time.			High Water at St John's.	Moon's Rising, Memoranda, &c.			
		at St. John's.		Declination.	Equa of time.								
		h.	m.	h.	m.	o	m.	s.	p.	m.	a.	m.	
M	1	4	12	7	43	N 22	8	2	24	4	37	4	2
T	2	4	12	7	44	22	15	2	15	5	39	5	10
W	3	4	11	7	45	22	23	2	5	6	32	6	7
Th	4	4	10	7	45	22	30	1	55	7	19	6	56
F	5	4	10	7	46	22	37	1	45	8	1	7	41
S	6	4	10	7	47	22	43	1	34	8	40	8	21
Su.	7	4	9	7	48	22	49	1	23	9	17	8	58
M	8	4	9	7	48	22	54	1	12	9	51	9	34
T	9	4	9	7	49	22	59	1	1	10	26	10	8
W	10	4	8	7	50	23	4	0	49	11	3	10	44
Th.	11	4	8	7	51	23	8	0	37	11	41	11	22
F	12	4	8	7	51	23	12	0	25	0	2		
S	13	4	7	7	52	23	15	0	12	0	45	0	26
Su.	14	4	7	7	52	23	18	0	0	1	44	1	16
M	15	4	6	7	53	23	21	0	13	2	51	2	16
T	16	4	6	7	53	23	23	0	26	3	56	3	25
W	17	4	6	7	54	23	25	0	39	4	57	4	27
Th.	18	4	5	7	54	23	26	0	52	5	55	5	27
F	19	4	6	7	55	23	7	1	5	6	42	6	18
S	20	4	7	7	55	23	27	1	18	7	32	7	8
Su.	21	4	7	7	55	23	28	1	31	8	18	7	54
M	22	4	8	7	56	23	27	1	44	9	4	8	40
T	23	4	8	7	56	23	27	1	57	9	50	9	27
W	24	4	9	7	56	23	25	2	10	10	38	10	14
Th.	25	4	9	7	56	23	24	2	23	11	31	11	4
F	26	4	10	7	56	23	22	2	35		11	57	
S	27	4	10	7	56	23	20	2	48	0	51	0	24
Su.	28	4	10	7	56	23	17	3	0	1	52	1	21
M	29	4	11	7	56	23	14	3	12	2	59	2	25
T	30	4	11	7	56	N 23	10	3	24	4	4	3	32

Equation of time to be subtracted from apparent time to the 13th and to be added the remainder of the month.

looks pale and dim, we expect rain; if red, wind; and if of a natural colour, with a clear sky, fair weather. If the moon is rainy throughout it will clear at the change, and perhaps the rain return a few days after. If fair throughout, and rain at the change, the fair

July, 1868.

MOON'S PHASES.

FULL MOON..... 4th day, 5h, 9m, Evening
 LAST QUARTER..... 12th day, 9h, 10m, Evening
 NEW MOON..... 19th d y, 6h, 26m, Evening
 FIRST QUARTER..... 26th day, 10h, 21m, Morning

Day of W.	Day of M.	Sun		G. app. time.		High			Moon's Rising, Memo- randa, &c.
		rises	sets	Sun's Declination.	Equa. of time. add.	Water at St. John's.			
		at St. John's.	at St. John's.	o	m s.	p m	a. m.		
W	1	4 12	7 55	N 23 6	3 35	5 9	4 36	Sir R. Peel died, 1850	
Th.	2	4 13	7 55	23 2	3 47	6 9	5 41		
F	3	4 13	7 54	22 57	3 58	6 58	6 34	Moon rises 55 minutes past 6, evening.	
S	4	4 14	7 54	22 52	4 8	7 44	7 22		
Su.	5	4 15	7 54	22 46	4 19	8 23	8 4	Moon rises 30 minutes past 8, evening.	
M	6	4 15	7 53	22 40	4 29	8 59	8 41		
T	7	4 16	7 53	22 34	4 38	9 36	9 18	Moon rises 40 minutes past 9, evening.	
W	8	4 17	7 53	22 27	4 47	10 8	9 52		
Th.	9	4 18	7 52	22 20	4 56	10 41	10 25	Moon rises 35 minutes past 10, evening.	
F	10	4 19	7 51	22 12	5 5	11 18	10 59		
S	11	4 19	7 51	22 4	5 13	11 57	11 36	Moon rises 26 minutes past 11, evening.	
Su.	12	4 21	7 50	21 56	5 20	0 18			
M	13	4 21	7 50	21 47	5 28	1 3	0 39	Moon rises 22 minutes past 12, evening.	
T	14	4 22	7 49	21 38	5 34	1 57	1 28		
W	15	4 23	7 48	21 29	5 41	3 5	2 30	Moon rises 32 minutes past 1, morning.	
Th	16	4 24	7 47	21 19	5 46	4 9	3 38		
F	17	4 25	7 46	21 9	5 52	5 15	4 41	Moon rises 25 minutes past 3, morning.	
S	18	4 26	7 45	20 58	5 56	6 16	5 47		
Su.	19	4 27	7 44	20 48	6 1	7 10	6 43	Moon rises with the Sun.	
M	20	4 28	7 43	20 36	6 4	8 1	7 37		
T	21	4 29	7 42	20 25	6 7	8 53	8 27		
W	22	4 30	7 41	20 13	6 10	9 41	9 18	4—Am. Ind., 1776.	
Th.	23	4 32	7 40	20 1	6 12	10 26	10 3	Prince Wales arrives at St. John's, 1860.	
F	24	4 33	7 39	19 48	6 13	11 15	10 50		
S	25	4 34	7 38	19 35	6 14		11 39		
Su.	26	4 35	7 37	19 22	6 14	0 27	0 3	27—Second Atlantic Cable laid, 1866.	
M	27	4 36	7 36	19 8	6 13	1 19	0 53		
T	28	4 37	7 35	18 54	6 12	2 19	1 47		
W	29	4 38	7 34	18 40	6 11	3 29	2 55	25—St. James.	
Th.	30	4 39	7 32	18 26	6 8	4 39	4 3		
F	31	4 41	7 31	N 18 11	6 5	5 48	5 15	Ig. Loyola died, 1556	

weather will probably return on the fourth or fifth day. If at night the stars appear unusually numerous, and there be little or no wind, easterly wind and rain, or snow, generally soon follow.

WIND.—If the wind veers about, much rain is pretty sure. If in changing it follows the course of the sun, it brings fair weather;

August, 1868.

MOON'S PHASES.

FULL MOON..... 3d day, 8h, 21m, Morning
 LAST QUARTER..... 11th day, 8h, 57m, Morning
 NEW MOON. 18th day, 1h, 41m, Morning
 FIRST QUARTER..... 24th day, 9h, 16m, Evening

Day of W.	Day of M.	Sun rises & sets at St. John's.		G. app. time.		High Water at St. John's.		Moon's Rising, Memoranda, &c.
		h.	m.	Sun's Declination.	Equa of time. add.	h.	m.	
S	1	4	42	7	29	N 17	56	
Su.	2	4	44	7	28	17	41	
M	3	4	45	7	27	17	25	
T	4	4	46	7	25	17	9	
W	5	4	48	7	24	16	53	
Th.	6	4	49	7	22	16	36	
F	7	4	50	7	21	16	19	
S	8	4	51	7	19	16	2	
Su.	9	4	53	7	18	15	45	
M	10	4	54	7	16	15	27	
T	11	4	55	7	15	15	10	
W	12	4	57	7	13	14	52	
Th.	13	4	58	7	11	14	33	
F	14	4	59	7	9	14	15	
S	15	5	1	7	8	13	56	
Su.	16	5	2	7	6	13	37	
M	17	5	3	7	4	13	18	
T	18	5	5	7	3	12	59	
W	19	5	6	7	1	12	39	
Th.	20	5	7	6	59	12	19	
F	21	5	9	6	57	11	59	
S	22	5	10	6	55	11	39	
Su.	23	5	11	6	54	11	19	
M	24	5	13	6	52	10	58	
T	25	5	14	6	50	10	38	
W	26	5	15	6	48	10	17	
Th.	27	5	17	6	46	9	56	
F	28	5	18	6	44	9	34	
S	29	5	19	6	42	9	13	
Su.	30	5	21	6	40	8	52	
M	31	5	22	6	38	N 8	30	

the contrary, foul. Whistling or howling of the wind, a sure sign of rain.

METEORS.—The Aurora Borealis, after warm days, are generally succeeded by cooler air.—Shooting stars are supposed to indicate wind.

September, 1868.

MOONS' PHASES.

FULL MOON 2d day, 0h, 27m, Morning
 LAST QUARTER 9th day, 6h, 33m, Evening
 NEW MOON 16th day, 9h, 49m, Morning
 FIRST QUARTER..... 23rd day, 11h, 51m, Morning

Day of W.	Day of M.	Sun		G. app. time.		High		Moon's Rising, Memo- randu, &c.
		rises at St. John's.	Sun sets at St. John's.	Sun's Decli- nation.	Equa. of time.	Water at St. John's.	Water at St. John's.	
		h. m.	h. m.	o	m. s.	p. m.	a. m.	
T	1	5 23	6 36	N 8 8	0 17	7 45	7 28	Moon rises 44 minutes
W	2	5 25	6 35	7 46	0 36	8 19	8 1	past 6, evening.
Th.	3	5 26	6 33	7 24	0 55	8 49	8 34	Moon rises 36 minutes
F	4	5 27	6 31	7 2	1 15	9 20	9 5	past 7, evening.
S	5	5 29	6 28	6 40	1 35	9 50	9 36	Moon rises 27 minutes
Su.	6	5 30	6 26	6 17	1 55	10 22	10 7	past 8, evening.
M	7	5 31	6 24	5 55	2 15	10 53	10 38	Moon rises 27 minutes
T	8	5 33	6 23	5 32	2 35	11 31	11 11	past 9, evening.
W	9	5 34	6 21	5 10	2 56	11 51	11 51	Moon rises 48 minutes
Th.	10	5 35	6 18	4 47	3 17	0 38	0 14	past 10, evening.
F	11	5 37	6 16	4 24	3 37	1 39	1 6	
S	12	5 38	6 14	4 1	3 58	3 4	2 20	Moon rises 41 minutes
Su.	13	5 39	6 12	3 38	4 19	4 30	3 46	past 0, morning.
M	14	5 41	6 10	3 15	4 40	5 46	5 11	Moon rises 5 minutes
T	15	5 42	6 8	2 52	5 1	6 42	6 16	past 3, morning.
W	16	5 43	6 6	2 29	5 22	7 33	7 9	
Th.	17	5 45	6 4	2 5	5 43	8 18	7 56	2—Atlantic Cable 1865
F	18	5 46	6 2	1 42	6 5	9 3	8 40	grappled and secured.
S	19	5 47	6 0	1 19	6 26	9 45	9 25	
Su.	20	5 49	5 58	0 56	6 47	10 25	10 5	
M	21	5 50	5 56	0 32	7 8	11 5	10 45	Protestant Cathedral
T	22	5 51	5 54	N 0 9	7 28	11 44	11 24	consecrated 1850.
W	23	5 52	5 53	S 0 15	7 49	0 7	0 7	8—Great Eastern ar.
Th.	24	5 54	5 50	0 38	8 10	1 0	0 32	at Heart's Content
F	25	5 56	5 48	1 1	8 30	2 6	1 32	with 1865 Cable.
S	26	5 57	5 46	1 25	8 51	3 29	2 46	
Su.	27	5 58	5 44	1 48	9 11	4 50	4 10	9—Catholic Cathedral
M	28	6 0	5 42	2 12	9 31	5 52	5 24	cons. 1855.
T	29	6 1	5 40	2 35	9 50	6 37	6 16	St. Michael.
W	30	6 2	5 38	S 2 58	10 10	7 16	6 57	

THE MILKY WAY.—That irregular stream of faint, cloudy light, which may be seen on clear, moonless nights by the naked eye, forming a circle entirely round the heavens, is supposed to be the remoter parts of the group of stars in which our sun is enveloped. To a spectator at a distant point in the heavens it may appear as a

October, 1868.

MOON'S PHASES.

FULL MOON	1st day,	4h, 27m, Evening
LAST QUARTER	9th day,	2h, 43m, Morning
NEW MOON	15th day,	7h, 31m, Evening
FIRST QUARTER	23rd day,	6h, 12m, Morning
FULL MOON	31st day,	7h, 34m, Morning

Day of W.	Day of M.	Sun		G. app. time.			High Water at St. John's.		Moon's Rising, Memorandu, &c.	
		rises at St. John's.	Sets at St. John's.	Sun's Declination.	Equa. of time.	o	m	s.		p.
Th.	1	6 4	5 36	S 3	22	10 29	7 49	7 33	Moon rises 4 minutes	
F	2	6 5	5 33	3 45	10 48	8 21	8 4	8 4	past 6, evening	
S	3	6 6	5 31	4 8	11 6	8 53	8 37	8 37	Moon rises at 7, evening.	
Su.	4	6 8	5 29	4 32	11 25	9 22	9 7	9 7	Moon rises 4 minutes	
M	5	6 9	5 27	4 55	11 42	9 56	9 40	9 40	past 8, evening.	
T	6	6 11	5 25	5 18	12 0	10 31	10 12	10 12	Moon rises 36 minutes	
W	7	6 12	5 23	5 41	12 17	11 8	10 49	10 49	past 9, evening.	
Th.	8	6 14	5 22	6 4	12 34	11 53	11 30	11 30	Moon rises 36 minutes	
F	9	6 15	5 20	6 27	12 50	0 20	0 20	0 20	past 11, evening.	
S	10	6 17	5 18	6 49	13 5	1 21	0 49	0 49	Moon rises at 2, morning.	
Su.	11	6 18	5 16	7 12	13 20	2 46	2 0	2 0	ing.	
M	12	6 20	5 14	7 35	13 32	4 16	3 32	3 32	Moon rises 30 minutes	
T	13	6 21	5 12	7 57	13 49	5 30	4 56	4 56	past 4, morning.	
W	14	6 22	5 10	8 19	14 3	6 25	5 58	5 58	1—1st Steamer on River Hudson, 1807	
Th.	15	6 24	5 8	8 42	14 16	7 12	6 50	6 50		
F	16	6 25	5 6	9 4	14 28	7 57	7 35	7 35		
S	17	6 27	5 4	9 26	14 40	8 39	8 18	8 18		
Su.	18	6 28	5 2	9 48	14 51	9 19	9 1	9 1		
M	19	6 30	5 0	10 9	15 2	9 59	9 39	9 39		
T	20	6 31	4 58	10 31	15 12	10 36	10 17	10 17		
W	21	6 33	4 57	10 52	15 21	11 16	10 55	10 55		
Th.	22	6 34	4 55	11 14	15 30	11 59	11 37	11 37	7—1st Tele. Message from Cape Breton, 1856.	
F	23	6 36	4 53	11 35	15 38	0 24				
S	24	6 37	4 51	11 56	15 46	1 21	0 49	0 49		
Su.	25	6 39	4 50	12 16	15 52	2 41	2 0	2 0		
M	26	6 40	4 48	12 37	15 58	4 1	3 22	3 22		
T	27	6 42	4 46	12 57	16 3	5 12	4 37	4 37	11—Steam com. estab. in Con. Bay, 1852.	
W	28	6 43	4 45	13 17	16 8	6 4	5 40	5 40		
Th.	29	6 45	4 43	13 37	16 12	6 41	6 22	6 22		
F	30	6 46	4 41	13 57	16 15	7 16	7 0	7 0		
S	31	6 48	4 40	14 17	16 17	7 50	7 33	7 33	Hallow Eve.	

small annular nebula, or as a thin stratum of starry light, covering but a small space in the sky. In the constellation Argo Navis is a vast nebular cluster, in which from 2,000 to 6,000 stars have been revealed by the telescope, besides large nebulous tracts which no

LA
NE
FI
FU

 Day of W.
Day of M.

 Su.
M
T
W
Th.
F
S
Su.
M
T
W
Th.
F
S
Su.
M
T
W
Th.
F
S
Su.
M
T
W
Th.
F
S
Su.
M

 teles
the
beyo

 Th
in 1

November, 1868.

MOON'S PHASES.

LAST QUARTER 7th day, 10h, 16m, Morning
 NEW MOON 14th day, 7h, 25m, Morning
 FIRST QUARTER 22d day, 3h, 16m, Morning
 FULL MOON 29th day, 9h, 30m, Evening

Day of W.	Day of M.	Sun		(<i>t. app. time.</i>)		High		Moon's Rising, Memo- randa, &c.
		rises at St John's.	sets	Sun Decli- nation.	Equa. of time. add.	Water at St. John's.		
		h. m.	h. m.	o	m. s.	p. m.	a. m.	
SU.	1	6 49	4 38	S 14 36	16 18	8 23	8 7	Moon rises 5 minutes past 6, evening.
M	2	6 51	4 36	14 55	16 19	8 57	8 40	
T	3	6 53	4 35	15 14	16 19	9 34	9 15	Moon rises 31 minutes past 7, evening.
W	4	6 54	4 33	15 32	16 18	10 11	9 51	
Th.	5	6 56	4 32	15 50	16 16	10 53	10 31	Moon rises 28 minutes past 9, evening.
F	6	6 57	4 30	16 8	16 13	11 41	11 15	
S	7	6 59	4 29	16 26	16 10	0 7		Moon rises 48 minutes past 11, evening.
SU.	8	7 0	4 27	16 44	16 5	1 11	0 38	
M	9	7 2	4 26	17 1	16 0	2 35	1 51	Moon rises at 1, morn- ing.
T	10	7 3	4 25	17 18	15 54	3 58	3 17	
W	11	7 5	4 24	17 34	15 47	5 12	4 36	Moon rises 24 minutes past 3, morning.
Th.	12	7 6	4 22	17 51	15 39	6 6	5 40	
F	13	7 8	4 21	18 7	15 30	6 55	6 32	Moon rises 50 minutes past 5, morning.
S	14	7 10	4 20	18 22	15 20	7 38	7 16	
SU.	15	7 11	4 19	18 38	15 10	8 18	7 59	
M	16	7 12	4 18	18 53	14 58	8 59	8 38	1—All Saints.
T	17	7 14	4 16	19 7	14 46	9 36	9 17	3—Free St. Andrew's Church opened, 1850.
W	18	7 15	4 15	19 22	14 33	10 13	9 54	
Th.	19	7 17	4 14	19 36	14 20	10 51	10 32	
F	20	7 18	4 13	19 49	14 5	11 32	11 11	9—Birth Prince Wales
S	21	7 20	4 12	20 2	13 50		11 54	
SU.	22	7 21	4 11	20 15	13 33	0 41	0 17	10—Newfd. and New York Telegraph op- ened, 1856.
M	23	7 23	4 11	20 28	13 17	1 45	1 11	
T	24	7 24	4 10	20 40	12 59	3 0	2 23	
W	25	7 26	4 9	20 52	12 41	4 8	3 34	
Th.	26	7 27	4 8	21 3	12 21	5 9	4 40	29—St. John's Wes- leyan Church open- ed, 1857.
F	27	7 28	4 7	21 14	12 2	6 0	5 35	
S	28	7 30	4 7	21 25	11 41	6 40	6 21	
SU.	29	7 31	4 6	21 35	11 20	7 20	7 0	1st Sunday in Advent.
M	30	7 32	4 6	S 21 45	10 58	8 0	7 40	St. Andrew.

telescope has yet resolved into stars. This nebula is seen through the Milky Way, but is supposed to lie at an immeasurable distance beyond it.

THE UNITED KINGDOM.—The population of the United Kingdom, in 1861, amounted to 29,193,397, and of the entire British Empire,

December, 1868.

MOON'S PHASES.

LAST QUARTER 6th day, 6h, 3m, Evening
 NEW MOON 13th day, 10h, 2m, Evening
 FIRST QUARTER..... 22d day, 0h, 57m, Morning
 FULL MOON..... 29th day, 10h, 17m, Morning

Day of W.	Day of M.	Sun rises at St. John's.		G. app. time.		High Water at St. John's.		Moon's Rising, Memoranda, &c.
		h. m.	h. m.	Equa. of decli- nation.	Equa. of time.	p. m.	a. m.	
T	1	7 33	4 5	S 21 54	10 35	8 37	8 19	Moon rises 18 minutes past 6, evening.
W	2	7 35	4 5	22 3	10 12	9 19	8 58	
Th.	3	7 36	4 4	22 11	9 48	10 0	9 39	Moon rises 27 minutes past 8, evening.
F	4	7 37	4 4	22 20	9 24	10 45	10 23	
S	5	7 38	4 3	22 27	8 59	11 35	11 9	Moon rises 49 minutes past 10, evening.
Sa.	6	7 39	4 3	22 34	8 33	0 3		
M	7	7 40	4 3	22 41	8 7	1 1	0 31	Moon rises 3 minutes past 0, morning.
T	8	7 42	4 3	22 47	7 41	2 11	1 35	
W	9	7 43	4 3	22 53	7 14	3 28	2 50	Moon rises 26 minutes past 2, morning.
Th.	10	7 44	4 3	22 59	6 46	4 41	4 4	
F	11	7 44	4 3	23 4	6 18	5 42	5 14	Moon rises 45 minutes past 4, morning.
S	12	7 45	4 3	23 8	5 50	6 33	6 8	
Sa.	13	7 46	4 3	23 12	5 22	7 20	6 58	
M	14	7 47	4 3	23 16	4 53	8 3	7 42	3—St. Andrew's Kirk opened, 1843.
T	15	7 48	4 3	23 19	4 23	8 44	8 24	
W	16	7 49	4 3	23 21	3 54	9 20	9 3	
Th.	17	7 49	4 4	23 24	3 24	9 57	9 38	
F	18	7 50	4 4	23 25	2 55	10 33	10 14	8—Sons of Tem. or- ganized in Nfld., 1850
S	19	7 51	4 4	23 27	2 25	11 11	10 51	
Sa.	20	7 51	4 4	23 27	1 55	11 51	11 30	
M	21	7 52	4 5	23 28	1 25	0 11		
T	22	7 52	4 6	23 27	0 55	0 56	0 31	
W	23	7 53	4 6	23 27	0 25	1 51	1 22	St. Thomas.
Th.	24	7 53	4 7	23 26	0 5	2 59	2 25	
F	25	7 53	4 7	23 24	0 35	4 4	3 32	CHRISTMAS DAY.
S	26	7 54	4 8	23 22	1 4	5 9	4 37	St. Stephen.
Sa.	27	7 54	4 9	23 19	1 34	6 4	5 39	St. John.
M	28	7 54	4 9	23 16	2 3	6 50	6 27	Innocents' Day.
T	29	7 54	4 10	23 13	2 32	7 36	7 13	Moon rises 2 minutes past 5, evening.
W	30	7 55	4 11	23 9	3 1	8 21	7 58	
Th.	31	7 55	4 12	S 23 5	3 30	9 7	8 45	

Equation of time to be subtracted from apparent time to the 24th, and to be added the remainder of the month.

including Protected States and tributaries, to 224,342,722, covering an area of 4,122,582 square miles.



The Royal Family.

ALEXANDRINA VICTORIA, by the Grace of God, of the United Kingdom of Great Britain and Ireland, Queen, only daughter and heir of the late Prince Edward, Duke of Kent, fourth son of King George III. Her Majesty was born at Kensington Palace, on the 24th May 1819; baptized on the 24th of June 1819; ascended the throne on the demise of her uncle, King William IV., 20th June 1837; proclaimed 21st June 1837; and crowned at Westminster, on the 28th June 1838. Her Majesty was married at St. James's Palace, on the 10th Feb. 1840, to her cousin, his late Royal Highness Francis-Albert-Augustus-Charles-Emmanuel, Duke of Saxe, Prince of Coburg and Gotha, who died at Windsor Castle, on the 14th Dec. 1861. Children:—

Victoria-Adelaide-Mary-Louisa, *Princess Royal*, born 21st Nov. 1840; married 25th Jan. 1858, at the Chapel Royal, to His Royal Highness Prince Frederick-William-Nicholas-Charles of Prussia.

Albert-Edward, *Prince of Wales and Earl of Dublin*, born 9th Nov. 1841; married 10th March 1863, at Windsor, to Princess Alexandra, daughter of Prince Christian, of Denmark.

Alice-Maud-Mary, born 25th April 1843; married 1st July 1862, at Osborne, to His Royal Highness Prince Frederick-William-Louis of Hesse-Darmstadt.

Alfred-Ernest-Albert, born 6th August 1814.

Helena-Augusta-Victoria, born 25th May 1846; married 5th July 1866, to His Royal Highness Prince Christian, of Schleswig Holstein Sonderburg Augustenburg.

Louisa-Caroline Alberta, born 8th March 1848.

Arthur-William-Patrick Albert, born 1st May 1850.

Leopold-George-Duncan-Albert, born 7th April 1853.

Beatrice-Mary-Victoria-Feodore, born 14th April 1857.

Her Majesty's Chief Officers of State.

THE CABINET.

- First Lord of Treasury*—The Earl of Derby, K.G.
Lord High Chancellor—Lord Chelmsford.
Lord President of the Council—Duke of Marlborough;
Lord Privy Seal—Earl of Malmesbury, G.C.B.
Chancellor of the Exchequer—Right Hon. B. Disraeli.
Secretary of State for Home Department—Right Hon. Gathorne Hardy.
Secretary of State for Foreign Affairs—Lord Stanley.
Secretary of State for the Colonies—Duke of Buckingham.
Secretary of State for War—Right Hon. Sir John Packington, G. C. B.
Secretary of State for India—Sir S. H. Northcote.
First Lord of the Admiralty—Right. Hon. H. T. L. Corry.
President of the Board of Trade—Duke of Richmond.
Chancellor of the Duchy of Lancaster—Colonel Wilson Patten.
President of the Poor Law Board—Earl of Devon.
Chief Commissioner of Works—Lord J. Manners.

NOT OF THE CABINET.

- Commander-in-Chief of the Forces*—Duke of Cambridge.
Post Master General—Duke of Montrose.
Under Secretary for Home Department—Sir J. Fergusson.
Under Secretary for Foreign Affairs—Mr. E. Egerton.
Under Secretary for Colonies—Mr. Adderly.
Under Secretary for War—Lord Longford.
Under Secretary for India—Lord Clinton.
Attorney-General—Sir John Holt.
Solicitor-General—Mr. Selwyn.
Judge Advocate General—Right Hon. J. R. Mowbray.

IRELAND.

- Lord Lieutenant*—Marquis of Abercorn.
Chief Secretary—Lord Naas.
Lord Chancellor—Right Hon. F. Blackburn.
Attorney-General—Right Hon. J. E. Walsh.
Solicitor-General—Mr. M. Morris.

SCOTLAND.

- Lord Advocate*—Mr. G. Patton.
Solicitor-General—Mr. S. Gordon.



COLONY OF NEWFOUNDLAND.

Governor, Commander-in-Chief and Vice-Admiral,
 HIS EXCELLENCY ANTHONY MUSGRAVE, ESQUIRE.

Private Secretary,
 CHARLES MESHAM, Esquire, Lieut. Col. St. John's Rifle Volunteers
Colonial Aide-de-Camp,
 EDWARD L. JARVIS, Esquire.

The Executive Council.

The Honorable Laurence O'Brien—*President.*
 The Honorable Frederick B. T. Carter, *Premier.*
 The Honorable Nicholas Stabb.
 The Honorable John Bemister.
 The Honorable Ambrose Shea.
 The Honorable John Kent.
 The Honorable John Hayward.
Clerk of the Council—Hon. John Bemister.

The Legislative Council.

The Honorable Laurence O'Brien, *President.*
 The Honorable Edward Morris.
 The Honorable Nicholas Stabb.
 The Honorable Robert Kent.
 The Honorable James S. Clift.
 The Honorable Richard O'Dwyer.
 The Honorable Edward White.
 The Honorable Peter G. Tèssier.
 The Honorable James Cormack.
 The Honorable James O. Fraser.
 The Honorable John Winter.
 The Honorable Edward D. Shea.
Master-in-Chancery and Clerk—Hon. George H. Emerson, holding by her Majesty's patent, the rank and precedence of an Executive Councillor.
Usher of the Black Rod—William F. Rennie.
Door Keeper—James Walsh.
Assistant Door Keepers and Messengers—James Corcoran and Ambrose Ronayne.

The House of Assembly.

[Elected November, 1865.]

Speaker—WILLIAM VALLANCE WHITEWAY, Esquire.

District of St. John's East—John Kavanagh, Esquire, Hon. John Kent, and Robert John Parsons, Esquire.

District of St. John's West—Thomas Talbot, Henry Renouf, and Peter Erennan, Esquires.

District of Harbor Grace—Hon. John Hayward, and William S. Green, Esquire.

District of Carbonear—John Rorke, Esquire.

District of Harbor Maine—George J. Hogsett and Charles Furey, Esquires.

District of Port de Grave—Robert John Pinsent, jr., Esquire.

District of Bay de Verds—Hon. John Bemister.

District of Trinity—Stephen Rendell, Frederick J. Wyatt, and Robert Alsop, Esquires.

District of Bonavista—John H. Warren, John T. Oakley, and John T. Burton, Esquires.

District of Twillingate and Fogo—Thomas Knight, and William V. Whiteway, Esquires.

District of Ferryland—Thomas Glen, and Michael Kearney, Esquires.

District of Placentia and St. Mary's—Hon. Ambrose Shea, Pierce M. Barron, and Thomas O'Rielley, Esquires.

District of Burin—Edward Evans, Esquire, and Hon. Frederick B. T. Carter.

District of Fortune Bay—Thomas R. Bennett, Esquire.

District of Burgeo and La Poile—Daniel Woodley Prowse, Esq.

Clerk—John Stuart.

Clerk Assistant—Richard Holden.

Solicitor—Thomas J. Kough.

Sergeant at Arms—Hugh J. Furneaux.

Doorkeeper—William Dalton.

Messengers—John Kennedy and Peter Higgins.

Under Doorkeepers—Philip Brown and Peter Doyle.

Fireman—John Higgins.

Librarian—Mrs. Feehan.

Public Officers (Departmental.)

Attorney General—Hon. Frederick B. T. Carter.

Colonial Secretary—Hon. John Bemister.

Receiver General—Hon. John Kent.

Solicitor General—Hon. John Hayward.

Surveyor General—John H. Warren, Esquire.

Financial Secretary—Hon. Edward D. Shea.

Chairman of Board of Works—Robert Alsop, Esquire.

Colonial Secretary's Office.

Colonial Secretary—Hon. John Bemister.

First Clerk—Joseph Crowdy.

Second Clerk—John W. Withers.

Office Keeper and Messenger—James Dunphy.

Revenue Department.

BOARD OF REVENUE.

President—Hon. John Kent, Receiver General; Hon. Laurence O'Brien, Hon. Nicholas Stabb, Hon. R. Kent, Ewen Stabb, Esq., Robert Grieve, Esq.

REVENUE ESTABLISHMENT.

Receiver General—Hon. J. Kent. Assistant Collector—John Canning, Esq. Landing and Tide Surveyor—James S. Hayward. Landing Waiters—Edward L. Moore, Thomas E. Gaden. First Clerk and Warehouse Keeper—William Doughtney. Second Clerk—James Winter. Third Clerk—William Gill. Fourth Clerk and Locker—William Reddin. Lockers—Richard Meagher and David Connors.

Authorised Broker—Henry J. Stabb.

OUTPORT SUB-COLLECTORS.

Fogo, John G. Lucas. Greenspond, William Lang. Trinity, Robert Bayly. Carbonear, John McCarthy. Harbor Grace, Henry T. Moore; Clerk and Landing Waiter, Johnstone F. Burrows. Brigus, John C. Nuttall. Burin, Thomas Winter. Lamaline, Henry Benning. Harbor Breton, Thomas Birkett. Gaultois, Richard Bradshaw. LaPoile, Thomas Read. Twillingate, Joseph J. Pearce. Oderin, Richard McGrath.

PREVENTIVE OFFICERS.

Bonavista and Catalina, John Miffen. Bay Bulls, Martin Williams. Ferryland, Luke Brown. St. Mary's, James Murphy. Little Placentia, Thomas Freeman. Channel (Port-aux-Basque), John Hooper. St. Laurence, Hugh Vavator. English Harbor, (Fortune Bay,) Albert Stirling. Bay Roberts, George W. Hierlihy. Pushthrough, (Fortune Bay,) Henry Camp. Hants Harbor, James L. Mews. Burgeo; Francis A. Parsons. Great Placentia, William G. Bradshaw. Grand Bank and Fortune, (Fortune Bay) Joseph G. Haddock. Trepassay, Henry Pennell.

CUSTOMS DEPARTMENT.

Comptroller of Customs and Registrar of Shipping for Newfoundland and its Dependencies—Hon. J. Kent. Surveyors of Shipping—Edward L. Moore, St. John's. Henry T. Moore, Harbor Grace. Robert Bayly, Trinity. Albert Stirling, English Harbor. David Candow, jr., Cape Bonavista to Salvage. William Lang, Salvage to Cape Freels. Dr. J. G. Haddock, Grand Bank and Fortune.

TREASURY DEPARTMENT.

Receiver General—Hon. J. Kent; Clerk—Geo. F. Hayward.

LABRADOR—*Collection of Duties under Act 26 Vic., Cap 1 and 2.*

Collector, James Winter. (Sub-Collectors appointed by Collector, subject to control of Governor in Council, under Act 26 Vic, Cap. 2, Sec. 10.)

Superintendent of Mercantile Marine—Robert Carter.

Surveyor General's Department.

Surveyor General—John H. Warren, Esq.

Assistant and Draftsman—William M. H. Warren.

Deputy Surveyor—Thomas Byrne.

Chairman — — — —.

DEPUTY SURVEYORS IN OUTPORTS.

Northern District—Benjamin Sweetland, Trinity. Moses Tilley, Random Sound. William Christiari, Old Perlican. Charles E. Thompson, Bonavista South. Robert Strathie, Bonavista West. Robert Oakley, Bonavista North. Thomas Peyton, Twillingate. Robert G. Knight, Green Bay North. G. W. R. Hierihy, Bay Roberts and Harbor Grace. George Carter, Harbor Main. John Hearn, Brigus. — — — —, Carbonear. — — — —, New Perlican.

Southern District—Thomas Mockler, Bay Bulls. Michael Kelly, Ferryland. John English, St. Mary's. Duncan J. Byles, Placentia. James Harney, Burin. Henry Camp and Albert Stirling, Fortune Bay. Josiah J. Blackburn, Grand Bank.

Financial Secretary's Office.

Financial Secretary—Hon. Edward D. Shea.

Clerk—Richard Howley.

Board of Works Department,

Having the management and superintendence of Government House, Colonial Building, Court Houses, Gaols, Custom Houses, Hospitals, Lunatic Asylum, and all other Buildings and Property belonging to the Colony; Light Houses, Buoys, and Beacons erected or to be erected within the Colony and its dependencies; supervision of Commissioners of Roads, Highways, Bridges, &c., &c.

BOARD OF WORKS.

Chairman—Robert Alsop, Esquire; Hon. J. Bemister, John Kavanagh, William Boyd, Thomas S. Dwyer.

Secretary—John Stuart.

Superintendent of Public Works and Buildings—John T. Nevill.

General Inspector of Light-Houses—Robert Oke.

Road Surveyors and Inspectors—Thomas Byrne and John Maher.

OUTPORT BOARDS OF ROAD COMMISSIONERS.

Harbor Grace—Henry T. Moore, Robert Walsh, William Squarey, P. Devereux, and Charles W. Ross.

Brigus to Port de Grave, both places inclusive—James Tarahin, Rev. E. O'Keefe, John Wilcox, Philip Bennett, Thomas Butler, John Bartlett, James N. Leamon, James Wilcox, Thomas Willcocks.

Port de Grave, Northern side of Northern Gut Bridge—Doctor Brown, Thomas Butler, — Kenny, John Butler, (Sand) John M. Maddock, John Andrews, Isaac Richards, Thomas Batten.

Indian Pond, exclusive, to Turk's Gut, inclusive—John Kennedy, jr., (Holyrood) Rev. K. Walsh, Charles Furey, Richard Walsh, (Harbor Main) John M'Gill, (Salmon Cove) James Wade, (Cat's Cove) James Hearn, (Colliers.)

Indian Pond to Topsail, both places inclusive—George Carter, Patrick Daily, John Nugent, John Haddon, William Tilly.

Bay Roberts—W. S. Green, Richard Cormack, Isaac Bartlett, John McStravic, Robert Daw.

Upper Island Cove, Bishop's Cove, and Bryant's Cove—James Crane, Joseph Drover, jr., James Drover, (Island Cove) John Barrett, Israel Gosse, (Bishop's Cove) Thomas Stephenson, (Bryant's Cove.)

Carbonear—John Rorke, John McCarthy, Michael Bolger, Michael Gould, John F. Apsey, Nicholas Nicholle, Benjamin T. Gould, Moses Wilshear.

Bay de Verds (Upper Division) from Fresh Water to Northern Bay, exclusive—Rev. John Waterhouse, Wm. Joice, Wm. Butt, Maurice Walsh, John Tuff, Robert Baggs.

Bay de Verds (Lower Division) from Northern Bay (inclusive) to Grates Cove—John Lewis, Rev. Bernard Duffy, Rev. Oliver Rouse, and Josiah Garland.

Trinity (North Side) to Ragged Harbor—Benjamin Sweetland, Robert Bayly, Alexander W. Bremner, Gilbert H. Cole, Patrick Murphy.

Trinity (South Side) from Grates Cove to Hants Harbor—James L. Mews, John Sheenan, Jabez Tilley, William Meadows, William March.

New Harbor—Charles Newhook, William Miller, Joseph Pretty, Edgar March, — Smith, (Chance Cove.)

Hants Harbor to the Head of the Bay—Rev. George Gardner, Reuben McMaster, Michael Howley, William Sooley, and Elias Warren.

Ragged Harbor to Bird Island—Alexander Bremner, William Ashford, William Walsh, Robert Tilley, John Cameron, John Jeynes, Benjamin Saelgey, James May, John Miles, (Catalina.)

Bonavista—John G. Skelton, James Saint, Peter Ward, John Lawrence, Patrick Kough, William Brown, David Candow.

King's Cove—Rev. William Kirby, Rev. John Cumming, Michael Murphy, David Candow, jr., Stephen Ryan, (Broad Cove) John Coffin, John Brown, jr.

Keels and Tickle Cove—James Eagan, (Keels) Andrew Mallowney, William Penny, John Skiffington.

Salvage—E. Kelligrew, Thomas Oldford, Henry Wills, (Salvage) James Bendon, James Pike, (Flat Island.)

Greenspond—George Skelton, M.D., James L. Noonan, John T. Oakley, William Lang, Michael Curran, William Tough, (Pinchard's Island), and Darius Blandford.

Musgrave Town, Bonavista Bay—Thomas Greening, John Oldford and Thomas Strathie.

Open Hall to Indian Arm, Bonavista Bay—John Prince, James Eagan, jr., Joseph Brown, Frederick Shears, Nicholas Cheevers.

Pool's, Pinchard's, Swain's, Cobler's, Cape and Bennett Islands, Cape Freels, and Middle Bill Cove, (Bonavista Bay North)—Rev. John G. Cragg, Joseph Gill, sr., William Kean, Job Davis, Samuel Winser, Edward Bishop, Thomas F. Parks.

Twillingate—John Peyton, Joseph J. Pearce, Joseph Minty, Samuel Baird, John Mitchell.

Fogo—Hay Findlater, M.D., Richard Power, Thomas Humphrey, John Banks, James Rolls, Bard Island.

Tillon Harbor—Rev. James Brown, William Burke, John Brine, John Dwyer, William Green.

Moreton's Harbor and Tizzard's Harbor—William Osmond, John Forward, (Tizzard's Harbor,) Henry Knight, John Taylor, John Cantwell, (Moreton's Harbor).

Burnt Island, Exploits—Edward Dowton, Thomas, Butt, William Sevin, Andrew Pearce, Josiah Manuel, James Windsor.

Fortune Bay—James Hamilton, Michael Bryan, Michael Byrne, Matthias Glaveen, Patrick Carroll, William Carroll, (Indian Cove) James Lyver, (Waldron's Cove.)

Jarkett's Arm to Head of Green Bay—John Knight, J. Campbell, John Rowseil, John Wills.

Shoe Cove to Nipper's Harbor—James Gray, John Stark, William Noble, John Walshman.

Leading Tickle—James Alcock, Edward Butler, William Rowsell.

Bay Bull's—Martin Williams, Thomas Mockler, and Cornelius Bryan.

Witless Bay to Balecn—Very Rev. Dean Cleary, James Murphy, Michael Driscoll, James Carey, Samuel Driscoll, and Thomas Gatherall.

Renews and Fernews—Rev. W. Forristal, Patrick Leary, William Johnson, Renews; John Connel, Henry O'Neill, Fernews.

Ferryland, Caplin Bay, and Aquaforte—Rev. James Murphy, John White, William Carter, Ferryland; Michael Power, Robert Morey, Caplin Bay; Henry Winsor, Edward Condon, Aquaforte.

Cape Broyle and Brigus—Thomas Carew, Martin Cashin, — Green, Cape Broyle; Nicholas Power, Thomas Badcock, Brigus.

Placentia and St. Mary's—Francis L. Bradshaw, Rev. Edward Condon, Thomas Freeman and Thomas Keites.

Sound Island, (Placentia Bay)—James Hollett, Philip Brown.

St. Mary's—James Murphy, John Walsh, John Whelan, John Grace, James Walsh, Patrick Walsh, James Whelan.

Burin—Francis Berteau, Owen Pine, George Bishop, Michael Gorman, John O'Neil, Thomas Winter.

Lamaline—Robert Bonnell, John Pitman, John Collins, George Cak, George Butt, George H. Evans.

Grand Bank—Edward Evans, Jonathan Snook, George Lake, William Burfit, Dr. J. G. Haddock.

Harbor Breton—Samuel Howe, Clement Mallett, Thomas Birkett, Philip Hubert, James Hardy.

Belloram—Rev. John Marshall, John Cluett, John Grandy, Thos. Rose, John Rowkey.

Garnish—George T. R. Snelgrove, Samuel Banfield, Joseph Grandy, Thomas Grandy, Stephen Grandy.

St. Lawrence—Robert Pike, William Fitzpatrick, Richard Quirk, James Reeves, Rev. J. Kinsella.

English Harbor—T. R. Bennett, — Hall, — Fiander, T. Evans, Albert Stirling, William Burke.

Gaultois—Rev. E. Colley, John Lee, Richard Bradshaw, H. Shephard, Walter T. Gallop.

Rose Blanche and Harbor LeCou—Philip Sorsoliel, John Hanhan, Meshech Parsons, Thomas Ridout, sr., George Thomas.

Burgeo—Rev. John Cunningham, William Anderson, Stephen Vatcher, Walter Ford, George Hunt, M.D., John Jordan.

La Poile—Thomas Read, Philip Clements, William Thomas, Frederic Cox, Philip Grouchy, Rev. G. S. Chamberlain, John Anderson.

Channel (Port-aux-Basque)—Rev. W. W. LeGallais, John Gilman, John Bragg, William Gilman, John G. Brook.

Shore lying between Cape LaHune and Bonne Bay, District of Burgeo and LaPoile—Rev. E. Colley, Abraham G. Skinner, Matthew Lee, Emanuel Symes, James R. Watkins.

GAOLS.

St. John's (Penitentiary)—Keeper, William M'Gill, (Acting); Turnkey, Samuel Shaw; Surgeon, Charles Crowdy, M.D.

Harbor Grace—Gaoler, David Rogers; Surgeon, W. Allan, M.D.

Trinity—Gaoler, Charles Granger.
Ferryland—Gaoler, Francis Geary.
Placentia—Gaoler, Samuel Collins.
Burin—Gaoler, John Murphy.
Bonavista—Gaoler, Michael Fennell.
Twillingate and Fogo—Gaoler, James Rice.
Harbor Breton—Gaoler, John Garvey.
Brigus and Port de Grave—Gaoler, Thomas Butler.
Greenspond—Gaoler, John Bridle.

COURT HOUSES.

St. John's—Keeper, Lionel T. Chancey.
Harbor Grace—Keeper, David Rogers.
Ferryland—Keeper, Francis Geary.

ST. JOHN'S HOSPITAL.

Medical Attendants—Charles Crowdy, M. D., and Charles H. Renouf, M. D.; Matron—Miss Cowan; Keeper—John Prowse.

ST. JOHN'S POOR HOUSE.

Medical Attendants—Charles Crowdy, M. D., and Charles H. Renouf, M. D.; Keeper—John Downey.

LUNATIC ASYLUM (ST. JOHN'S.)

Resident Physician—Henry H. Stabb, M. D.

DISTRICT SURGEONS.

St. John's (Eastern Ward)—William C. Simms, M. D.; Henry Shea, M. D. (*Western Ward*)—Frederick Bunting, M. D., James N. Fraser, M. D.

Conception Bay—William Allan, M. D.

COLONIAL BUILDING AND GROUNDS.

Keeper—Mrs. Born.

COMMISSIONERS FOR ERECTION OF PUBLIC WHARF.

Catalina—William Walsh, James Murphy, John Diamond, John Jeynes.

COMMISSIONERS FOR ERECTION OF BREAKWATERS.

Fortune—George Lake, sr., Elias Major, John Lake, John Spence, sr., Thomas Rogers, sr., John Forsey, sr., and Edward Bennett.

Grand Bank—Robert Forsey, William Buflitt, Henry Hickman, Wilson Lovell, Henry Nicholl, George Tibbo, George Forsey.

Twillingate—John Peyton, John W. Owen, John M. Hurse.

Great Burin—Owen Pine, James Inkpen, and Henry Holt.

LIGHT HOUSES.

Fort Amherst Light at the entrance of St. John's—A Light was first established at this station in 1813; in 1850 a new House, Lantern and Apparatus were erected. The Light burns at an elevation of 114 feet, is produced by a treble argand burner placed in the focus of an annular lens of the fourth order, and in favorable weather can be seen 16 nautical miles. When Cape Spear is enveloped in fog a heavy piece of ordnance is also discharged at this Fort every hour during day light, to assist vessels in making the harbor. It is situated in lat. 47.33.54 N., and long. 52.40.18 W. John Sheppard, Keeper; Austin Oke, Assistant.

Cape Spear Light.—This Light was first exhibited on the 1st September 1835; it is produced by seven argand burners and silvered reflectors burning at an elevation of 264 feet—it revolves, shewing a bright Light, every minute, and in favourable weather can be seen 26 nautical miles. It is situated in 47.31.11 N. lat., and 52.33.59 W. longitude. James Cantwell, Keeper; Dennis Cantwell, Assistant.

Harbor Grace Island Light.—First exhibited on the 21st November, 1836; it is a fixed Light, has fifteen argand burners and reflectors, showing a steady bright light from N. to S. W. and by W. seaward, elevated above the level of the sea 151 feet, and can be seen in fair weather in rounding Cape St. Francis or crossing Conception Bay, on the intervening space between N. and S. W. and by W. 20 nautical miles; on the land side the light is more feeble. It is situated in lat. 47.42.45. N., and long. 53.8.15. Samuel Austin, Keeper; Charles Snow, Assistant.

Cape Bonavista Light.—Situated in lat. 48 41.56 N., long. 53.5.20 W.; is a Revolving Light, showing alternately every 90 seconds a white and red Light. It is produced by sixteen argand burners and reflectors, burns at an elevation above the sea of 150 feet, and in favorable weather can be seen 18 nautical miles. By keeping this Light open with Cape Largent, it will carry you clear of the Flower Rocks; first exhibited 11th September, 1843. Jeremiah White, Keeper; Nicholas White, Assistant.

Cape Pine Light.—This tower is of iron, built by the Imperial Government in 1849-50, and first put in requisition on the 1st January, 1851. It is a fixed White Light, and shews a brisk flash every thirty seconds—has 12 argand burners and reflectors—elevated above the level of the sea 314 feet—situated in lat. 46.37.4 N., and in long. 53.31 45. W. In a favourable state of the atmosphere it can be seen 26 nautical miles. George Hewitt Keeper; Thomas Doran, Assistant.

Harbor Grace Beach Beacon and Light.—First exhibited 11th September 1850; stands on the Point of Beach at the entrance of Harbor Grace. It is a double Light, as a distinction from Harbor Grace Island Light, one being placed above the other, preserving that appearance for six miles, exceeding this distance up to ten miles the two lights appear blended into one. In sailing into Harbour

Grace with a fair or leading wind, bring the Beach Beacon to bear W. or W. by S., and by keeping the Light or building a little on the starboard bow it will carry you clear of the Bar, on which at low water there is not more than 8 feet of water. It is situated in lat. 47.41.28 N., and in long. 53.12.33 W.; elevation above the sea level 40 feet; in clear weather it may be seen at a distance of 11 nautical miles. George Brown, Keeper.

Green Island Light at the entrance of Catalina Harbor, Trinity Bay—Situated in lat. 48.30.16 N., long. 53.2.40 W. This is a fixed white Light, burns at an elevation of 92 feet above high water and in favourable weather will be seen from E.N.E., seaward, to S.W., 15 nautical miles. Vessels bound Northward by keeping this Light open with the North Head of Catalina until Bonavista Light opens with Cape LeJean, will give the Flowers Rocks an ample berth—or when coming from the Northward and bound for Catalina, by giving the N. Head a moderate berth, you will clear the Brandies Rocks by steering for Green Island Light. It was first exhibited in 1857. Henry Roper, Keeper; William Houlahan, Assistant.

Cape Race Light.—Exhibits a Revolving white Light, from sunset to sunrise. The Light will be visible to seaward from N.E. by E. round by the S.E. and S. to W. The Light is elevated 180 feet above the mean water level of the sea, and may be seen in clear weather 19 nautical miles from a ship's deck. The tower is striped red and white vertically. It stands close to the old Beacon, which has been cut down. The Light house is in lat. 46.39.30 N., long. 53.4.30 W., and was first exhibited in 1856. Michael J. Hally, Keeper; George Simms, Assistant.

Dodding Head, Great Burin Island Light.—This Light was put in requisition on the 3rd August, 1858, and is exhibited every night from sunset to sunrise. It is revolving, catoptric of the second order, producing a brilliant white Light every minute, with intermediate flashes at intervals of twenty seconds, burning at an elevation of 430 feet above the level of the sea, and in favorable weather can be seen 29 miles—situated in 47.0.26 North Latitude, 55.8.43 West Longitude. Austin Sheppard, Acting Keeper; John Churchwell, Assistant.

Offer Wadham Island Light.—Was first exhibited on the 4th October, 1858, and is lighted every night from sunset to sunrise. The Light is a steady, fixed lens-light, burning on a circular Brick Tower 100 feet above the level of the sea, and can be seen in a favourable state of the atmosphere 15 nautical miles. Situated in Latitude 49.36.0 North—Longitude 53.45.6 West. Charles Prowse, Keeper; Peter Woods, Assistant.

■ *Baccalieu Island Light*.—This Light is exhibited every night from the going away of daylight in the evening to the return of daylight in the morning. The Light House is situated on the Northern end of the Island—Latitude 48.8 51 North, Longitude 52.47.50 West,—the tower is of brick, the keeper's dwelling a square building detached from the tower, painted white with the roof red.

The light is a catoptric first class Holophotal revolving white

Light, shewing a flash every twenty seconds. It is elevated 443 feet above high water, and can be seen in clear weather 30 nautical miles, and a lesser distance according to the state of the atmosphere. When the Southern end of the Island bears N.N.E., the Light will not be visible when nearer the Island than 8 miles. It was first exhibited in 1858. James Ryan, Keeper; John Ryan, Assistant.

Cape St. Mary's Light.—Was put in requisition on the 20th September, 1860; it is a revolving catoptric Light of the first order, producing alternately every minute a brilliant red and a white Light burning at an elevation of 300 feet above the level of the sea, and will be seen in a favourable state of the atmosphere 26 nautical miles from a vessel's deck; situated in 46.49.30 N. lat., 54.11.34 West long. The tower is of brick, and on each side of which stands the dwellings of the Keeper and Assistant, the sides of which are painted white, roofs red. John Reiley, Keeper; William J. Collins, Assistant.

St. John's.—Two red lights are exhibited every night from sunset until sunrise, intended as leading marks for vessels entering the Narrows. The lower light on the roof of the Custom House—the other 400 yards in the rear, on a white post, within a few yards of the N.E. angle of the Congregational Church, and 180 feet above the level of the sea. These lights will be readily distinguished from other lights in the town; and keeping them in a line bearing N.W. $\frac{1}{4}$ W. will lead in the largest vessel clear of all danger. To serve as leading marks also during the day, the pediment of the Custom House has been painted white; this is to be kept in line with the upper lantern, also painted white. Exhibited 1st September 1863.

Brunet Island Light, Mercer's Head, Fortune Bay.—First exhibited 27th June, 1865. It is a powerful, flashing white Light, and attains its greatest brilliancy every ten seconds. It burns at an elevation of 408 feet above the level of the sea, and in clear weather may be seen at a distance of 35 miles, and be visible in every direction from North round East and South, to W.N.W. Mercer's Head is a bold headland, and situated in long. 55.59.30. W., and lat. 47.16 N. Martin Sparrow, Keeper; James Gaulton, Assistant.

Galantry Head, Island of St. Peter's.—The Fixed Light on Galantry Head, (Island of St. Peter's), since the 10th August, 1862, has been replaced by a Flash Light, with intervals of twenty seconds, and by one red flash after two white flashes; situated in lat. 46.45.30 N., long. 58.27.0 W.; elevation above high water 64 metres. Distance at which the light is visible 18 miles. The Light is hidden at the Northward by the highland of St. Peter's.

Light at the South Entrance St. Peter's.—Since 1st October, 1862, the entrance of the harbor of St. Peter's, called South Channel, has been marked by two small Fixed Lights, one of which is a white Light illuminating three fourths of the horizon, and placed on the Battery—and the other a red Light, on the plain at the North of the town. The white Light has an elevation of 11 metres, and is visible 6 miles. The red Light is elevated 19 metres, visible 3 miles dis-

tance. The line connecting these two lights indicates the Middle Channel.

The position of the red Light has also been so determined that as soon as it is seen on the left of Cape Eagle, vessels coming from Columbiar in beating into the N.E. entrance will have nothing to fear from the shoals of Cape Rouge.

Robert Oke, General Inspector of Light Houses.

Light Dues.—One Shilling per ton on all vessels entering any port or harbor of the Colony, except coasting, sealing, or fishing vessels; but not to be levied more than once in any one year. Sealing and coasting vessels—Sixpence per ton on registered vessels of 40 tons and upwards; Fifteen Shillings per annum on all vessels less than 40 tons.

The 19th of Victoria, Cap 5, Sec. 5, enacts—"That no greater sum than £25 sterling shall be in any year levied for Light Dues on any steamer or vessel entering any port of this Colony; and no Steamer plying between Europe and any port of North America, and entering any port of this Colony as a Port of Call, shall be liable to pay any Light Dues or other port charges except pilotage.

Post Office Department.

Post Master General—John Delaney, Esquire.

Chief Clerk and Accountant—James Healy.

Superintendent Money Order Office—James Healy.

Second Clerk and Assorter—John Freeman.

Third Clerk and Assorter—James Furlong.

Assistants—E. Soloman and George R. Lilly.

Letter Carrier and Messenger—George Gaden.

Office hours, from 9 o'clock, a.m., to 4 p.m., Sundays excepted.

POST MASTERS.

Harbor Grace, Andrew Drysdale; Carbonear, Nicholas Nicholle; Brigus, Sarah Stentaford, (Post Mistress); Trinity, Anne Cross, (Post Mistress); Bonavista, John Lawrence; Greenspond, William Lang; Fogo, James Fitzgerald; Twillingate, Joseph J. Pearce; Bay Bulls, Martin Williams; Ferryland, John Morry; Placentia, Mary Morris, (Post Mistress); Burin, Thomas Winter; Harbor Breton, Thomas Birkett; Burgeo, Francis A. Parsons; Little Placentia, Alexander Burke; New Perlican, Francis Howell; LaPoile, Thomas Reed.

WAY OFFICERS.

Port de Grave, Matthew O'Rielly; Bay Roberts, James Fitzgerald; Blackhead, William Butt; King's Cove, Michael Murphy; Old Perlican, William Christian; Portugal Cove, Mrs. Dooley, (Way Mistress); St. Mary's, James Murphy; Oderin, James Murphy; Paradise, William Ryan; Salmonier, John Hurley; Harbor Maine, Mrs. Brick, (Way Mistress); Hermitage, M. Frances; Catalina, John Jeans; Garnish, George Snelgrove; Bay de Verds,

Elias Picco; Lamaline, James Pitman; Grand Bank, Jonathan Hickman; Fortune, Dr. Haddock; Channel, John Hooper; Holyrood, John Veitch; Topsail, James Moyse; Hant's Harbor, Thomas Smith; Cat's Cove, T. O'Brien; Island Cove, John Crane; Trepassey, E. Devereux; English Harbor, Albert Stirling; New Harbor, C. Newhook; Come-by-Chance, E. Blackadar; Freshwater, — Pritchett.

POSTAL ROUTES.

Summer—Between St. John's and Portugal Cove, every day, except Sunday and Friday, by waggon.

Between Portugal Cove, Brigus, Harbor Grace, and Carbonear, by Steamer, tri-weekly; Bay Roberts, weekly.

Winter—Overland, by waggon, for Carbonear, via Topsail, Kellegrews, Holyrood, Harbor Maine, Brigus, Port-de-Grave, Bay Roberts, Spaniards' Bay, and Harbor Grace, four hours after the arrival of the Steamer from Halifax.

Between Carbonear and Grates Cove (calling at Heart's Content, New Perlican, Hants Harbor, and Old Perlican,) weekly, by messenger.

Between Carbonear and Bay de Verds, weekly, by messenger, calling at intermediate places.

Between New Perlican and Trinity, weekly, by boat.

Between Trinity and Bonavista, and between Trinity and King's Cove, weekly, by messenger.

Between Bonavista and Greenspond, fortnightly, by boat, touching at King's Cove or Tickle Cove.

Between St. John's, Fogo and Twillingate, monthly, by steamer, or on such other days as the Post Master General may appoint; and during winter months, overland via Harbor Grace, Spaniards' Bay, New Harbor, Come-by-Chance, Random, Freshwater, on the Thursday after arrival of Halifax Steamer.

Between St. John's, Bay Bulls, Witless Bay, Toads Cove and Ferryland, weekly, by waggon, during summer months, and fortnightly in winter.

*Between Ferryland, Aquafort, Renew's and Trepassey, fortnightly in summer, and monthly in winter, by messenger.

Between St. John's and Placentia, by waggon, at 4 o'clock, p.m., on the Tuesday after the arrival of Halifax Steamer.

*Between Placentia and St. John's, by waggon, in one hour after the arrival of the Packet Boat from Burin.

*Between Salmonier and St. Mary's, by messenger.

*Between Great and Little Placentia, by messenger.

*Between Little Placentia, LaManche, Sound Island, Harbor Buffet, Red Island, Merasheen and Burgeo, by boat.

*Between Great Placentia and Burin, by boat, touching at Paradise and Oderin.

*Between Burin and Garnish, by messenger.

*Between Burin, Corban, Little and Great St. Lawrence, Laminic, Fortune and Grand Bank, by messenger.

*Between Garnish and Harbor Breton, calling at English Harbor, by boat.

*Between Harbor Breton, Burgeo and LaPoile, by boat.

Besides the above-mentioned routes, intermediate Mails are made up and dispatched by Steamer *Ariel*.

Routes marked thus * are fortnightly during Summer, and monthly during Winter months.

Newspapers posted in this country, when addressed to any place in Nova Scotia, Canada, P. E. Island, Bermuda, the United States or elsewhere, must be prepaid, by Mail, otherwise they cannot be forwarded, except deposited in the Government Agent's Bag as merchandise. Foreign Newspapers re-posted for transmission to out-ports are charged one cent each, prepaid by stamp; unpaid, 2 cents.

All Correspondence addressed to the United States, must be prepaid, or it cannot be forwarded.

INLAND POSTAGE.

For letters—Under $\frac{1}{2}$ oz. 5 cents.

Under 1 oz. 10 cents.

5 cents for every additional $\frac{1}{2}$ oz. prepaid by stamps.

For book packets, pamphlets, magazines and periodicals, not exceeding three pounds in weight, transmitted by post within the Island, are charged five cents for every quarter pound of their weight.

The Pillar Letter Boxes are cleared at 9 a.m. and 2 p.m. for town delivery, every day, (Sundays excepted,) and also, two hours before closing the mail by the Halifax Steamer. Newspapers dropped in the Pillar Letter Boxes will not be delivered.

PARCEL POST.

Parcels closed at the ends and sides may be posted at any Post Office in Newfoundland for conveyance to any other Post Office (not Way Office) in the Island, at a rate of postage subject to the following conditions:—

1.—No letter or letters shall be concealed.

2.—The parcel shall not contain any explosive substance, glass, liquid, or other matter likely to injure the ordinary contents of the mail, under penalty of the forfeiture of the parcel.

3.—The weight of the parcel shall not exceed 3 lbs, nor the size exceed one foot in length or breadth, or six inches in thickness.

4.—Parcels must be prepaid at the following rates:—

If weighing less than 1 lb. 20 cents.

Over 1 lb. and not exceeding 2 lb. 40 cents.

Over 2 lb. and not exceeding 3 lb. 60 cents.

5.—The parcel may be registered on payment of a fee of five cents in addition to the postage.

6.—If the name and address of the sender be written on the parcel, it will, if delivery should fail from any cause, be returned unopened to the sender on payment of an additional rate of 20 cents for the return conveyance.

7.—The parcel should have the words "by Parcel Post," plainly written over the address. It should be well and strongly put up and be legibly addressed to the Post Office address of the intended receiver, including the name of the district in which the Post Office is situated. The following is an example of the mode of address recommended :—

BY PARCEL POST:

To _____
 _____ Post Office
 District of _____
 Sent by _____
 _____ District of _____

PROHIBITORY CLAUSES.

No written communication shall be enclosed in any circular, periodical, pamphlet, book, book parcel, or parcel for the Parcel Post; and no communication shall be written upon any circular, periodical, pamphlet, book, book package, or parcel.

No letter, or any writing, or any marks to serve the purpose of a letter, shall be written upon or enclosed in any newspaper posted to pass as a newspaper.

Books, pamphlets and magazines, for Great Britain, are charged the following rates—the postage in all cases must be prepaid :—

For a packet not exceeding 4 ozs. 6 cents.
 not exceeding 8 ozs. 12 cents.
 over 8 ozs. and not exceeding 1 lb. 24 cents.

And so on, adding 12 cents for every additional 8 ozs., or fraction thereof.

Table of Postage Rates on Letters posted in Newfoundland for the following Countries via England, viz :—

Africa, Ascension, Borneo, Brazil, Buenos Ayres, Belize, (Honduras), Ceylon, China, Costa Rica, Cuba, Cape of Good Hope, Graytown, Guatemala, Hayti, Labuan, Mexico, Montevideo, Natal, New Granada, Panarg, Porto Rico, St. Helena, Surinam, Singapore, 34 cents per $\frac{1}{2}$ oz.

Aden, Austria, Australia, Baden, Bavaria, Belgrade, Bremen, Bourbon, (Isle of.) Brunswick, Egypt, Falkland Islands, Fernando Po, Frankfort, Gambia, Gibraltar, Gold Coast, Hamburg, Hanover, Hesse, Liberia, Lubeck, Malta via Southampton, Mauritius, Mecklenburg, New South Wales, New Zealand, Oldenburg, Prussia, Saxony, Sierra Leone, Sweden, Tasmania, per $\frac{1}{2}$ oz. 22 cents.

Azores, Canary Islands, Italy, Malta via France, Naples, Papal States, Portugal, Sardinia, Sicily, Smyrna, Spain, Switzerland, per $\frac{1}{2}$ oz. 22 cents.

Belgium, France, Algeria, Madeira, Cape de Verds, Holland, per $\frac{1}{4}$ oz. 16 cents.

Bolivia, Chili, Ecuador, Peru, and places on the West Coast of America, per $\frac{1}{2}$ oz. 58 cents.

Lanarca, Seres, Tehesme, Tenedos via England, South America (East and West Coast of) via Bermuda, per $\frac{1}{2}$ oz. 34 cents.

Constantinople, Dardanelles, Galataz, Gallipoli, Moldavia, Mytelene, Rhodes, Samsonn, Salonica, Scutari, Syria, Trebizond, Tulcha, Tunis, Varna, per $\frac{1}{4}$ oz. 20 cents.

Greece, per $\frac{1}{4}$ oz. 32 cents.

Denmark, per $\frac{1}{2}$ oz. 18 cents.

India and the Ionian Islands, per $\frac{1}{2}$ oz. 30 cents.

Helligoland and Norway, 26 cents per $\frac{1}{2}$ oz.

Launberg, per $\frac{1}{2}$ oz. 24 cents.

Papal States via Belgium, 32 cents per $\frac{1}{2}$ oz.

Poland and Russia, per $\frac{1}{2}$ oz. 30 cents.

United Kingdom, 12 cents, single rate.

Table of Rates of Postage on Letters for the British Provinces, United States, and West Indies, viz :—

Canada, New Brunswick, Nova Scotia, (except Halifax), Cape Breton, (except Sydney), 13 cents per $\frac{1}{2}$ oz. ; P. E. Island, Halifax, N. S., Sydney, C.B., United States, West Indies, via Bermuda, 10 cents per $\frac{1}{2}$ oz. posted at St. John's, 13 cents per $\frac{1}{2}$ oz. posted at Outports.

Vancouver's Island, British Columbia, South America, (East and West Coast of) via Bermuda, 34 cents per $\frac{1}{2}$ oz.

Rule of Rating Letters by British Packet.

For the United States, British Provinces and Possessions, to be charged with a single rate of Postage, if not exceeding the weight of $\frac{1}{2}$ an oz. ; double rate if exceeding $\frac{1}{2}$ but not over 1 oz. ; quadruple rate if exceeding 1 but not over 2 ozs. ; and so on charging 2 rates for every oz., or fractional part of an oz., over the first oz.

The United Kingdom and West Indies, under $\frac{1}{2}$ oz. one rate ; under 1 oz. two rates ; under $1\frac{1}{2}$ oz. three rates ; and so on adding one rate for every $\frac{1}{2}$ oz.

Letters posted in Newfoundland for delivery at any place within the Island, are charged 5 cents for every $\frac{1}{2}$ oz., if prepaid, and 10 cents unpaid.

By the Act 28 Vic., Cap. 2, all letters sent from this Colony, and all local letters deposited in any Post Office in the Colony for delivery or transmission within it, shall be prepaid by Stamps, or otherwise such letters shall be chargeable with double postage to the receiver.

Parties desirous of vending Newfoundland postage stamps, will be allowed a commission of five per cent. Stamps, in all cases, to be paid for in advance.

REGISTRATION.

Any Letters found to contain Coin, as well as any having the word "Registered" written upon them, which may be posted in Newfoundland for the United Kingdom, will be forwarded charged with a double registration fee.

MONEY ORDER BRANCH.

James Healy, Superintendent.

Office hours from 9 a.m. to 4 p.m.

Money Orders are now interchanged with the United Kingdom, Nova Scotia, P. E. Island, Canada, and New Brunswick, at the following rates of Commission.

Scale for United Kingdom—Orders up to £2 stg., 1s. stg.; from £2, up to £5, 2s.; from £5 up to £7, 3s.; from £7 up to £10, 4s.

Scale for the Provinces—Orders up to £5, 1s.; from £5 to £10 2s.; from £10 to £15, 3s.; and from £15 to £20, 4s. No single Order can be granted for more than £20. No half-pence to be introduced in the Orders.

SYSTEM.

1—Money Orders are made out in forms supplied for the use of the Money Order Offices.

2—Persons applying for Money Orders are recommended to use printed "Application Forms" printed for that purpose.

3—Place of payment of a Money Order may be changed in accordance with instructions provided therefor.

4—Alteration of payee's name may be effected, by issue of a new Order and payment of commission thereon.

5—Applicants for Money Orders are expected to observe due care in the examination of the same, relative to filling and stamping; defect in Orders, when presented for payment, may cause difficulty and delay, for which the paying office is not to be held accountable.

6—Postmasters should be particularly careful to obtain from the person who presents a Money Order, whether the rightful owner or not, full information as to the Christian name, surname and address, of the party who originally obtained it, unless such party be a firm, when the name of the firm will suffice. *The only exception to this rule is*—When an Order is presented through a Bank, in which case it will suffice that the Order, being properly signed, be also crossed with the Banker's name.

7—As, however, *after once paying a Money Order, by whomsoever presented, the Office will not be liable to any further claim,* the public are strictly cautioned,—

1st—To take all means to prevent the loss of the Money Order.

2nd—To be careful, on taking out an Order, to state correctly the Christian as well as the surname of the person in whose favor it is to be drawn.

3rd—To see that the name of the person taking out the Money Order is correctly known to the person in whose favor it is drawn.

8—Payment of a Money Order must be obtained before the end of the sixth calendar month after that in which it was issued, otherwise a new Order will be necessary, for which a second commission will be charged; and if the Order be not paid before the twelfth calendar month after that in which it was issued, all claims to the money will be lost.

Neglect of the foregoing instructions will risk the loss of the money, besides leading to delay and trouble in obtaining payment.

The Money Order Offices in Newfoundland, at present, are : General Post Office, St. John's; Post Offices at Bay Bulls, Bonavista, Brigus, Burgeo, Burin, Carbonear, Ferryland, Fogo, Greenspond, Harbor Breton, Harbor Grace, Placentia, Trepassey, Trinity, Twillingate.

9—Postmasters should recommend the use of Money Orders for the transmission of money, in preference to such transmission otherwise.

POST OFFICE DIRECTORY FOR NEWFOUNDLAND,

Containing an Alphabetical List of the Towns, Villages and Settlements in the Colony, with the Post Towns and Way Offices.

POST TOWNS—Those marked thus * are Money Order Offices.

<i>Name of Office.</i>	<i>District.</i>	<i>Name of Postmaster.</i>
*Brigus	Port de Grave	Mrs. Stentafor
*Bonavista	Bonavista	John Lawrence
*Burin	Burin	Thomas Winter
*Burgeo	Burgeo and LaPoile	Francis A. Parsons
*Bay Bulls	Ferryland	Martin Williams
*Carbonear	Carbonear	Nicholas Nicholle
*Fogo	Fogo and Twillingate	James Fitzgerald
Ferryland	Ferryland	John Morry
*Greenspond	Bonavista	William Lang
*Harbor Grace	Harbor Grace	Andrew Drysdale
*Harbor Breton	Fortune Bay	Thomas Birkett
Little Placentia	Placentia and St. Mary's	Alexander Burke
*Placentia	Placentia and St. Mary's	Miss Morris
*Twillingate	Fogo and Twillingate	Joseph J. Pearce
*Trinity	Trinity	Anne Cross
New Perlican	Trinity	Francis Howell
LaPoile	Burgeo and LaPoile	Thomas Read

WAY OFFICES.

<i>Name of Office.</i>	<i>District.</i>	<i>Way Office Keeper.</i>
Bay Roberts	Port de Grave	James Fitzgerald
Blackhead	Bay de Verds	William Butt
Bay de Verds	Bay de Verds	Elias Picco
Catalina	Trinity	John Jeans
Cats Cove	Harbor Main	Timothy O'Brien
Channel	Burgeo and LaPoile	John Hooper
Come by Chance	Placentia Bay	A. Blackadar
English Harbor	Fortune Bay	Albert Stirling
Fortune	Burin	Dr. Haddock
Freshwater	Bonavista Bay	— Pritchett
Grand Bank	Burin	Jonathan Hickman
Garnish	Burin	George Snelgrove
Harbor Main	Harbor Main	Mrs. Brick
Hermitage	Fortune Bay	M. Frances
Hants Harbor	Trinity	Thomas Smith
Holyrood	Harbor Main	John Veitch
Island Cove	Harbor Grace	John Craue
King's Cove	Bonavista	Michael Murphy
Lamaline	Burin	James Pitman
La Manche	Placentia and St. Mary's	
New Harbor	Trinity	C. Newhook
Oderin	Placentia and St. Mary's	James Murphy
Old Perlican	Trinity	William Christian
Paradise	Placentia and St. Mary's	John Power
Port de Grave	Port de Grave	Matthew O'Rielly
Portugal Cove	St. John's East	Margaret Dooley
Random	Trinity Bay	J. Tilley
Salmonier	St. Mary's and Placentia	John Hurly
St. Mary's	Placentia and St. Mary's	James Murphy
Topsail	Harbor Main	John Moyse
Trepassey	St. Mary's	Ellen Devereux

ALPHABETICAL LIST OF TOWNS, VILLAGES, AND SETTLEMENTS.

<i>Names of Places.</i>	<i>Districts.</i>	<i>Post Towns.</i>
Adam's Cove	Bay de Verds	Carbonear
Amherst Cove, (Upper)	Bonavista	Trinity
Amherst Cove, (Lower)	do	do
Apsey Cove	Fogo	Fogo
Aquaforte	Ferryland	Ferryland
Admiral's Beach	St. Mary's and Placentia	St. Mary's
Angel's Cove	do do	Placentia
Arnold's Cove	do do	Little Placentia
Amos Cove	do do	Great Placentia
Belle Isle	St. John's East	Portugal Cove
Baline	do	do
Broad Cove	do	do
Blackhead	St. John's West	St. John's
Broad Cove	Harbor Main	Harbor Main
Bacon Cove	do	do
Burnt Head, (Cupids)	Brigus	Brigus
Broad Cove	do	do
Bull Cove	do	do
Blow me Down	do	do
Bareneed	do	do
Brigus	do	do
Bryant's Cove	Harbor Grace	Harbor Grace
Bishop's Cove	do	do
Beachy Cove	do	do
Blow me Down	Bay de Verds	Carbonear
Broad Cove, (No. S.)	do	do
Black Head	do	do
Bay de Verds	do	do
Boney Brook	do	do
Bird Island Cove	Trinity	Trinity
Birchey Cove	do	Bonavista
Barrow Harbor	do	Trinity
Back Harbor	Fogo and Twillingate	Twillingate
Broom Close	Trinity	Trinity
Bloody Bay	do	do
Bonavista	Bonavista	Bonavista
Bragg's Island	do	do
Burnt Island	do	do
Batterton's Island	do	do
Bayly's Cove	do	do
Bermoth Island	do	Greenspond
Bloody Arm	Fogo	Fogo
Heaver Cove	do	do
Bard Islands	do	do
Blackhead Cove	Twillingate	do
Black Island	do	do
Burnt Bay	do	do
Birchy Bay	do	do

<i>Names of Places.</i>	<i>Districts.</i>	<i>Post Towns.</i>
Bet's Cove	Fogo	Fogo
Bay Bulls	Ferryland	Bay Bulls
Burnt Cove	do	do
Balline	do	do
Brigus	do	Ferryland
Biscay Bay	Placentia and St. Mary's	Trepassey
Barisnay	St. Mary's	St. Mary's
Beckford C. Shore	Placentia and St. Mary's	Placentia
Branch	Placentia	do
Bordeaux	do	Little Placentia
Black River	do	do
Barren Island	do	do
Britt's Hole	do	do
Burgeo	do	do
Bona	do	Great Placentia
Burnt Islands	do	do
Bane Harbor	do	do
Beau Bois	do	do
Burin	Burin	Burin
Brunet Island	Fortune Bay	Harbor Breton
Bay de East	do	English Harbor
Bay de North	do	do
Rock Side Cove	Trinity	Trinity
British Harbor	do	do
Black Duck Cove	do	do
Boun's Dear Harbor	do	do
Broad Cove	do	do
Barrow	Fortune Bay	English Harbor
Belloram	do	do
Blue Pine	do	do
Bay L'Argent	do	do
Ball Bay	do	do
Bauburg's Cove	do	do
Boxy	do	Harbor Breton
Blanchett	do	do
Bay de Peau	do	do
Brimball's Head	do	do
Bonne Bay	do	do
Brimball's Store House	La Poile	Burgeo
Burgeo (Upper)	do	do
Burgeo (Lower)	do	do
Brazils	do	La Poile
Baker's Tickle	do	do
Burnt Islands	do	do
Brent's Cove	do	do
Bede Cove	do	do
Bear Cove	do	do
Cape Spear	St. John's East	St. John's
Chamberlain	Harbor Main	do
Chapel's Cove	do	Harbor Main
Cat's Cove	do	Brigus

<i>Names of Places.</i>	<i>Districts.</i>	<i>Post Towns.</i>
Cow Head	Fogo and Twillingate	Twillingate
Colliers	Harbor Main	Brigus
Cupids	Brigus	do
Caplin Cove	do	do
Clark's Beach	do	do
Centre Harbor	Harbor Grace	Harbor Grace
Coosh	do	do
Coley's Point	do	do
Carbonear	Carbonear	Carbonear
Cloun's Cove	Bay de Verds	do
Caplin Cove	do	do
Chapel Arm	Trinity	Harbor Grace
Chance Cove	do	do
Cat Cove	do	do
Cuckhold's Cove	do	Trinity
Catalina	do	do
Careless Harbor	do	do
Castle Cove	do	do
Cotterell's Island	Bonavista	do
Cobbler's Island	do	Bonavista
Cape Island	do	do
Cape Freels	do	do
Cat Harbor	Fogo	Fogo
Can Island	do	do
Cape Fogo	do	do
Change Islands	Twillingate	Twillingate
Caplin Cove	Fogo	Fogo
Caplin Bay	Ferryland	Ferryland
Cape Broyle	do	do
Cape Race	St. Mary's and Placentia	Trepassey
Cape Pine	do do	do
Colinet	do do	St. Mary's
Cape Dog	do do	do
Cuslett	do do	Great Placentia
Clattice Harbor	do do	do
Corbin	Burin	Burin
Conn	Fortune Bay	English Harbor
Cinque Serf	do	do
Corbon	do	do
Con Harbor	do	Harbor Breton
Corbon	do	do
Coomb's Cove	do	do
Connaigre Bay	do	do
Cul de Sac	do	do
Cape La Hlave	do	do
Coppett	do	do
Coiteau	do	do
Channel	Burgeo and La Poile	LaPoile
Dock-port de Grace	Brigus	Brigus
Dock Point	Harbor Grace	Harbor Grace
Daniel's Cove	Trinity	Carbonear

<i>Names of Places.</i>	<i>Districts.</i>	<i>Post Towns.</i>
Dildo Cove	Trinity	Harbor Grace
Deer Island	Bonavista	Bonavista
Dead Man's Bay	Fogo and Twillingate	Fogo
Doting Cove	do do	Greenspond
Dog Bay	do do	Twillingate
Distress	Placentia and St. Mary's	Placentia
Dog Harbor	do do	Little Placentia
Davis's Cove	do do	do
Dureill	Burin	Burin
Dawson's Cove	Fortune Bay	Harbor Breton
Despair Bay	do	do
Doctor's Harbor	do	English Harbor
Dragon Bay	Burgeo and La Poile	Burgeo
Deer Island	do do	do
English Harbor	Trinity	Trinity
Exploits Burnt Island	Fogo and Twillingate	Twillingate
English Harbor	Fortune Bay	Harbor Breton
English Harbor, near } Belloram }	do	do
Eastern Point	Burgeo and La Poile	La Poile
Flat Rock, Torbay	St. John's, East	St. John's
Freshwater	do do	do
Fox Trap	Harbor Main	do Topsail
Freshwater	Bay de Verds	Carbonear
Fox Harbor	Trinity	Trinity
Friday's Cove	do	do
Fool's Island	do	do
Freshwater Bay	Bonavista	do
Flat Island	do	do
Flower Island	do	Bonavista
Fair Island	do	Greenspond
Fogo Har. and Islands	Fogo and Twillingate	Fogo
Fortune Bay	do do	Twillingate
Flurry's Bite	do do	do
Ferryland	Ferryland	Ferryland
Fermeuse	do	do
Fox Harbor	Placentia and St. Mary's	Little Placentia
First Beach & Freshwtr	do do	Great Placentia
Flat Island	Burin	Burin
Fox Cove	do	do
Fortune	do	do
Forn	Fortune Bay	Harbor Breton
Furby's Cove	do	do
Fox Island Harbor	do	do
Francois	Burgeo and La Poile	La Poile
Frenchman's Cove	do do	do
Gullies (Upper)	Harbor Main	Topsail
Gullies (Lower)	do	do
Gasters	do	do
Gullies and Goulds	Brigus	Brigus

<i>Names of Places.</i>	<i>Districts.</i>	<i>Post Towns.</i>
Grate's Cove	Bay de Verds	Carbonear
Green's Harbor	Trinity	do
Goosberry Cove	do	Harbor Grace
Ganny Cove	do	do
Green Bay	do	Trinity
Green Island Cove	do	do
Gooseberry Island	Bonavista	Bonavista
Greenspond and Tickle	do	Greenspond
Grant's Island	do	do
Gander Bay	Fogo and Twillingate	Fogo
Grapes Cove	do do	do
Goulds (Bay Bulls)	St. John's, West	St. John's
Gaskier	St. Mary's and Placentia	St. Mary's
Gull Cove	Placentia and St. Mary's	Placentia
Golden Bay	do do	do
Gooseberry	do do	do
Grandy's Point	do do	do
Gallow's Harbor	do do	Great Placentia
Golds Cove	Burin	Burin
Grand Bank	do	do
Grand Beach	do	do
Garnish	Fortune Bay	do
Grand John	do	Harbor Breton
Grant's Cove	do	do
Great Harbor	do	do
Grole	do	do
Gripe Island	do	do
Gaultois	do	do
Great Jervois	do	do
Grandy's Brook	do	Burgeo
Gana	Burgeo and LaPoile	La Poile
Gull Island	Fogo and Twillingate	Twillingate
Green Harbor	Trinity	Harbor Grace
Horse Cove	Conception Bay	Portugal Cove
Holyrood, Nor. & Sou.	Harbor Main	St. John's
Harbor Main	do	Harbor Main
Hall's Town	Port de Grave	Brigus
Hibb's Hole	do	do
Harbor Grace	Harbor Grace	Harbor Grace
Hants Harbor	Trinity	Carbonear
Heart's Desire	do	Harbor Grace
Heart's Delight	do	do
Heart's Content	do	Carbonear
Heart's Ease	do	Harbor Grace
Hare Bay	Fogo and Twillingate	Fogo
Harbor Island	do do	do
Herring Neck	do do	Twillingate
Hall's Bay	do do	do
Holyrood, Rood-pond	St. Mary's and Placentia	St. Mary's
Harry Cove	do do	do
Harbor Buffett	do do	Little Placentia

<i>Names of Places.</i>	<i>Districts.</i>	<i>Post Towns.</i>
Hay Stack	St. Mary's and Placentia	Little Placentia
Harbor Mille	Fortune Bay	Harbor Breton
Hare Harbor	do	do
Harbor Breton	do	do
Hermitage Cove	do	do
Harry's Cove	do	do
Harbor Gulley	do	do
Hatter's Point	Burgeo and La Poile	Burgeo
Harbor Le Cou	do	La Poile
Hiscock's Point	do	do
Island Cove	Harbor Grace	Harbor Grace
Island Cove, (Lower)	Bay de Verds	Carbonear
Island Cove	Trinity	Harbor Grace
Ireland's Eye	do	do
Indian Arm	Bonavista	Bonavista
Indian Bay	do	do
Indian Islands	Fogo and Twillingate	Fogo
Indian Cove	do do	Twillingate
Isle of Valen	Placentia and St. Mary's	Great Placentia
Isle of Glue	Fortune Bay	English Harbor
Isle de Mort	Burgeo and La Poile	La Poile
Juniper Stump	Port de Grave	Brigus
Juggler's Cove	Harbor Grace	Harbor Grace
Job's Cove	Bay de Verds	Carbonear
Joe Batt's Arm	Fogo and Twillingate	Fogo
Jackson's Arm	do do	do
John's Pond	St. Mary's and Placentia	St. Mary's
Jigging Hole	Trinity	Trinity
Jean de Bay	Burin	Burin
Jack Fountain	Fortune Bay	Harbor Breton
Jessey Harbor	do	do
Kelligrows	Conception Bay	St. John's, Top'l
Kerley's Harbor	Trinity	Trinity
Knight's Cove	do	do
King's Cove	do	King's Cove
Keel's	do	do
King's Cove	Fogo and Twillingate	Fogo
King's Harbor	Burgeo and La Poile	La Poile
Logy Bay	St. John's East	St. John's
Long Pond	Harbor Main	do Topsail
Lance Cove	do	do do
Long Beach	Port de Grave	Brigus
Lower Small Point	Bay de Verds	Carbonear
Low Point	do	do
Lance Cove	Trinity	do
Lower Amherst Cove	Bonavista	Bonavista
Lion's Den	Fogo and Twillingate	Fogo
Loom Bay	do do	Twillingate
Leading Tickles	do do	do
Little Bay Island	do do	do

<i>Names of Places.</i>	<i>Districts.</i>	<i>Post Towns.</i>
Little Island	St. Mary's	St. Mary's
Little Salmonier	do	do
Lear's Cove	Placentia and St. Mary's	Great Placentia
Little Placentia	do do	Little Placentia
La Manche	do do	do
Little Harbor	do do	do
Little Bay	Burin	Burin
Lawn	do	do
Lamaline	do	Lamaline
Longue de Serf	Fortune Bay	Harbor Breton
Lobster Cove	do	do
Lolly Cove	do	English Harbor
Little Bay	do	do
Little Bay	Fogo and Twillingate	Twillingate
Lambell's Passage	Fortune Bay	Harbor Breton
Little River	do	do
Little Bay—La Poile	Burgeo and La Poile	La Poile
La Poile	do do	do
La Plante	do do	do
Maddox Cove	St. John's West	St. John's
Middle Bight	Harbor Main	Topsail
Manuels	do	do
Middle Arm	do	Harbor Main
Middle Cove	St. John's East	St. John's
Mercer's Cove	Harbor Grace	Harbor Grace
Mosquito	Carbonear	Carbonear
Marshall's Folly	Bay de Verds	do
Mulley's Cove	do	do
Muddy Hole	Fogo and Twillingate	Fogo
Merrriott's Harbor	do do	Twillingate
Moreton's Harbor	do do	do
Mause Point	do do	do
Mobile	Ferryland	Bay Bulls
Mosquito Island	St. Mary's and Placentia	St. Mary's
Mall Bay	do do	do
Mother Ixx's	do do	do
Middle House	do do	St. John's
Muzzle Pond	do do	St. Mary's
Marguise	do do	Little Placentia
Muzzel Harbor	do do	do
Merashcen	do do	do
Mahoney's Cove	do do	Great Placentia
Murphy's Cove	do do	do
Mortier Bay	Burin	Burin
Molyers and Barrisway	do	do
Mose Ambrose	Fortune Bay	Harbor Breton
Miller's Passage	do	do
Mosquito	Burgeo and La Poile	Burgeo
Moon's Face	do do	La Poile
Margaree	do do	do
Northern Gut	Port de Grave	Brigus

<i>Names of Places.</i>	<i>Districts.</i>	<i>Post Towns.</i>
New Perlican	Trinity	Carbonear
New Harbor	do	Harbor Grace
New Bonaventure	do	Trinity
Norman's Cove	do	do
New Harbor	do	do
Newell's Island	do	do
Newman's Cove	Bonavista	Bonavista
Noggin Cove	Fogo and Twillingate	Fogo
New Bay	do do	Twillingate
Nimrod	do do	do
Nippers' Harbor	do do	do
North Harbor	St. Mary's and Placentia	St. Mary's
North Harbor	do do	Little Placentia
New Harbor	Fortuno Bay	Harbor Breton
New Harbor	do	Burgeo
Outer Cove	St. John's East	St. John's
Otterbury	Bay de Verds	Carbonear
Ochre Pit Cove	do	do
Old Perlican	Trinity	do
Old Shop	do	Harbor Grace
Old Bonaventure	do	Trinity
Open Hall	Bonavista	do
Oliver's Cove	Placentia and St. Mary's	Placentia
Oderin	do do	do
Old Man's Bay	Burgeo and La Poile	Burgeo
Pass Island	Fortune Bay	Harbor Breton
Pouch Cove	St. John's East	St. John's
Portugal Cove	St. John's East	do Por'l Cove
Petty Harbor	do West	do
Port de Grave	Port de Grave	Brigus
Perry's Cove	Bay de Verds	Carbonear
Plate Cove	Bonavista	Trinity
Pouch Cove	do	Bonavista
Pool's Island	do	do
Pinchard's Island	do	do
Pig Island	do	do
Pond Head	do	Greenspond
Portugal Cove	St. Mary's and Placentia	Trepassey
Point La Haye	do do	St. Mary's
Patrick's Cove	do do	Great Placentia
Point Verd	do do	do
Placentia (Great)	Placentia and St. Mary's	do
Placentia (Little)	do do	Little Placentia
Point Mall	do do	do
Presque	do do	Great Placentia
Paradise (Great)	do do	do
Paradise (Little)	do do	do
Paradise Sound	do do	do
Petit Ford	do do	do
Pickaree	Fortune Bay	Harbor Breton
Petites	Burgeo and La Poile	La Poile

<i>Names of Places.</i>	<i>Districts.</i>	<i>Post Towns.</i>
Quidi Vidi	St. John's East	St. John's
Rip Rap	Port de Grave	Brigus
Red Cliff Cove	Bay de Verds	Carbon ear
Random Sound	Trinity	Trinity
Rider's Harbor	do	do
Russell's Cove	Carbonear	Carbonear
Ragged Harbor	Fogo and Twillingate	Fogo
Ragged Harbor	Trinity	Trinity
Red Cliff Island	Bonavista	do
Round Harbor	Fogo and Twillingate	Fogo
Renews	Ferryland	Ferryland
Rams Islands	Placentia and St. Mary's	Little Placentia
Red Island	do do	do
Ragged Islands	do do	do
Rushoon Harbor	do do	do
Red Harbor	Burin	Burin
Rund's Cove	Trinity	Carbonear
Rock Harbor	Burin	Burin
Rencontre	Fortune Bay	Harbor Breton
Round Cove	do	do
Raymond Island	do	do
Round Harbor	do	do
Richard's Harbor	Burgeo and La Poile	do
Rencontre	do do	do
Rameo	do do	Burgeo
Red Island	do do	do
Rock Harbor, West	do do	do
Rotto	do do	La Poile
Rose Blanche	do do	do
Seal's Cove	Harbor Main	St. John's, Top'l
Salmon Cove	do	Harbor Main
Salmon Cove (S. Gut.)	Port de Grave	Brigus
Ship Cove	do	do
Sandy Cove	do	do
Spaniard's Bay	Harbor Grace	Harbor Grace
Salmon Cove Head	Bay de Verds	Carbonear
Spout Cove	do	do
Scilly's Cove	Trinity	do
Seal Cove	do	do
Shoal Harbor	do	Trinity
Sill Down	do	do
Selby's Cove	do	do
Spaniard's Bay	do	do
Ship Cove	do	do
Salmon Cove	do	do
Spillard's Cove	do	do
Stock's Cove	Bonavista	do
Sandy Cove	do	do
Salvage	do	do
Shoe Cove	do	Bonavista
Swain's Island	do	Trinity

<i>Names of Places.</i>	<i>Districts.</i>	<i>Post Towns.</i>
Ship Island	Bonavista	Trinity
Seldom-come-by	Fogo and Twillingate	Fogo
Shoal Bay	do do	do
Stocking Harbor	do do	do
Snook's Arm	do do	Twillingate
Shoe Cove	do do	do
St. Shot's	Placentia and St. Mary's	Trepassey
St. John's	St. John's	St. John's
Ship Cove	Placentia and St. Mary's	Great Placentia
St. Lawrence (Great)	Burin	Burin
St. Lawrence (Little)	do	do
Spencer's Cove	Placentia and St. Mary's	Little Placentia
Seeveley's Cove	do do	do
Southern Harbor	do do	do
Sandy Harbor	do do	Great Placentia
St. Kyran's	do do	do
South East Bite	do do	do
Spanish Room	Burin	Burin
Sagona Island	Fortune Bay	Harbor Breton
Stones Cove	do	do
St. Jacques	do	do
S. W. Bainsway	do	do
Sam Hitches	do	do
Southern Harbor	do	English Harbor
Swoir Cove	Burgeo and LaPoile	Burgeo
Seal Island Harbor	do do	LaPoile
Topsail	Harbor Main	St. John's, Top 'l
Turk's Gut	Port de Grave	Brigus
Turk's Cove	Trinity	Carbonear
Tickle Harbor	do	Harbor Grace
Trinity	do	Trinity
Trouty	do	do
Thoroughfare	do	do
Tilton Harbor	Fogo and Twillingate	Fogo
Three Arms	do do	do
Twillingate	do do	Twillingate
Tory Town	do do	do
Tizzard's Harbor	do do	do
Tilt Cove	do do	do
Triton Islands	do do	do
Torbay	St. John's East	St. John's
Trepassey	St. Mary's and Placentia	Placentia
Tack's Beach	do do	Little Placentia
Toselo	do do	Great Placentia
The Brook	Fortune Bay	English Harbor
Turnip Cove	do	do
The Reach	do	do
Upper Small Point	Bay de Verds	Carbonear
Upper Amherst Cove	Bonavista	Bonavista
Virgin's Cove	Placentia and St. Mary's	Little Placentia
Vere Island	Bonavista	Bonavista

<i>Names of Places.</i>	<i>Districts.</i>	<i>Post Towns.</i>
Victoria Town	Bonavista	Bonavista
Vitter's Cove	Trinity	Trinity
White Monday Hill	Harbor Grace	Harbor Grace
Western Bay	Bay de Verds	Carbonear
White Point	Trinity	Trinity
Whitless Bay	do	do
Warren's Harbor	Bonavista	Bonavista
West'n Arm Rocky Bay	Fogo and Twillingate	Fogo
Western Head	do do	Twillingate
WildCove(Sel.ComBy)	do do	Fogo
Ward's Harbor	do do	do
Waldron's Cove	do do	do
Witless Bay	Ferryland	Bay Bulls
Woody Island	Placentia and St. Mary's	Little Placentia
Wreck Island	Burgeo and La Poile	Burgeo
Western Point	do do	La Poile

Savings' Bank.

Governors—Five members of the House of Assembly and three members of the Legislative Council, viz :—The Hon. the Speaker, Hon. Attorney General, Hon. Ambrose Shea, Hon. John Bemister, and ———, Esq., of the House of Assembly; the Honbles. Nicholas Stabb, Robert Kent, and James S. Ciift, of the Council.

Directors—Hon. N. Stabb, Hon. F. B. T. Carter, and Hon. Ambrose Shea.

Cashier—Hon. Edward Morris.

The Bank is open every Monday between the hours of 12 and 2 o'clock, for Depositors' business.

BRANCH BANK, HARBOR GRACE.

Cashier and Clerk—Joseph Peters.

Commissioners of Wrecked Property.

Placentia and St. Mary's, George Simms, Jr. District of Burin, George Bishop. Channel, John Hooper. La Poile, Thomas Rea G. Burgeo, Francis Parsons. Placentia, James E. Croucher. St. Mary's, James Murphy. Ferryland, Martin Williams and W. W. Carter. Bay de Verds, John Lewis. Trinity South, James I. Mews. Trinity North, Ronald Bremner. Greenspond, John T. Oakley. Fogo, James Fitzgerald. Twillingate, Thomas Peyton. Fortune Bay, Thomas Birckett. Conception Bay, G. W. R. Hierlihy. St. John's, John B. Bulley. Labiador, Robert H. Ellis. Point May to Garnish, Joseph G. Haddock. Point May to Lawn Point, Henry Benning. Cape Race to St. Peter's River, Henry Pennell. Cape Bonaventure to Salvage, David Candow, Jr.

Commissioners for Reduction of Public Debt.

Hon. Laurence O'Brien, and the Hon. Receiver General.

Poor Commissioners.

Joseph Shea, Esq., M.D., (Stipendiary,) Hon. John Bemister.—
Inspector, John Dunphy.

Commissioners of Pilots.

Chairman—John B. Bulley, Esq.; Hon. Laurence O'Brien, Hon.
Nicholas Stabb, Robert Grieve, Hon. Ambrose Shea.

*Table of Rates of Pilotage of Vessels in and out of the Harbor
of St. John's.*

	Currency.
Vessels under 80 tons new measurement	£2 0 0
Vessels from 80 to 100 tons new measurement	2 10 0
Vessels from 100 to 120 tons new measurement	2 15 0
Vessels from 120 to 160 tons new measurement	3 0 0
Vessels from 160 to 200 tons new measurement	3 5 0
Vessels from 200 to 240 tons new measurement	3 10 0
Vessels from 240 to 280 tons new measurement	3 15 0
Vessels from 280 to 300 tons new measurement	4 0 0
Vessels from 300 to 350 tons new measurement	5 0 0
Vessels from 350 to 400 tons new measurement	6 0 0
Vessels from 400 to 500 tons new measurement	7 0 0
Vessels from 500 to 600 tons new measurement	8 0 0
Vessels from 600 to 700 tons new measurement	9 0 0
Vessels from 700 to 800 tons new measurement	10 0 0
Over that size—for every 100 tons additional	0 10 0
And on no one vessel is the pilotage to exceed	12 0 0

All coasting vessels which may take pilots to pay one half of the above rates of pilotage, in proportion to their tonnage.

The above scale of pilotage, shall be payable on the register tonnage of all such vessels, as ascertained before going out of the harbor.

	Currency.
Her Majesty's Ships under sixth-rate	£3 10 0
Do. do of fourth, fifth, and sixth-rate	6 10 0
Do. do of first, second, and third-rate	8 10 0

All merchant or mail steamers to pay 6d. for each horse power, and on no one ship to exceed twelve pounds currency, to be ascertained either by ship's register, or if necessary, by captain's affidavit.

Board of Health.

Health Officers—Henry Shea, M.D., St. John's. William Allan, M.D., Harbor Grace. Richard Berney, M.D., Carbonear. Francis Moran, M.D., Burin. William Stirling, M.D., Twillingate. Hay Findlater, M.D., Fogo. Robert White, M.D., Trinity.

Health Wardens for Town and District of St. John's—Dr. Shea, Chairman; Robert R. W. Lilly, Secretary; Hon. P. G. Tessier, Hon. James S. Clift, Hon. Robert Kent, and Stephen Rendell, F. J. Wyatt, Robert Grieve, Robert Thorburn, John Bowring, Joseph I. Little, John Casey, J. J. Rogerson, Thomas R. Smith.

Medical Officer to Board of Trade for Sick Seamen, Port of St. John's—William C. Simms, M.D.

Judicial Department.

SUPREME COURT.

Chief Justice—Honorable Hugh W. Hoyles.

Assistant Judges—Honorable Bryan Robinson and George H. Emerson (Acting.)

Attorney General—Honorable Frederick B. T. Carter.

Solicitor General—Honorable John Hayward.

Queen's Counsel—Hon. G. H. Emerson, Hon. Frederick B. T. Carter, Hon. John Hayward, William V. Whiteway, and R. J. Pinsent.

Chief Clerk and Registrar Supreme and Central Circuit Courts—Matthew W. Walbank.

Chief Clerk and Registrar Northern Circuit Court—Lewis W. Emerson.

Chief Clerk and Registrar Southern Circuit Court—Michael J. O'Mara, (Acting.)

Crier of the Supreme Court and Tipstaff—William Howlin.

Barristers and Attorneys of the Supreme Court at St. John's, according to Seniority, exclusive of the Attorney and Solicitor Generals and Queen's Counsel—John S. Stevens, Robert R. W. Lilly, George J. Hogsett, Thomas J. Kough, Matthew W. Walbank, Archibald Emerson, Charles H. Simms, Augustus O. Hayward, Daniel W. Prowse, Joseph I. Little, Michael J. O'Mara, Prescott Emerson, Robert J. Kent, Henry T. B. Wood, Robert J. Parsons, Jr., John Joseph Delaney, James S. Winter.

Barristers and Attorneys, Northern District—Hon. John Hayward, William O. Wood, Harbor Grace; Henry A. Clift, Twillingate.

Attorney at Law—Robert R. Holden.

Students admitted Members of the Law Society—Alexander J. W. McNeily, John H. Boone.

Law Society Benchers—W. V. Whiteway, Treasurer; R. J. Pinsent, jr., Secretary; Hon. Solicitor General, Matthew W. Walbank, Thomas J. Kough.

Sheriffs—Central District, John V. Nugent. Northern District, Garland C. Garden. Southern District, John Stephenson.

Masters-in Chancery—Hon. George H. Emerson, Thomas J. Kough, Robert J. Pinsent, jr., William V. Whiteway, M. W. Walbank.

VICE-ADMIRALTY COURT.

Judge—The Chief Justice for the time being.

Registrar—P. W. Carter.

Marshal—James Bayly.

Surrogates—Robert R. W. Lilly, D. W. Prowse and Henry T. B. Wood, St. John's. Lewis W. Emerson, Harbor Grace.

COURT OF CIVIL AND CRIMINAL JURISDICTION FOR LABRADOR.

Judge—Robert John Pinsent, sen., Esq.

Bailiff—Jonas Purchase.

This Court is held during the Summer months on the Coast of Labrador. The Judge is ex-officio a Magistrate and Coroner.

TERMS OF COURTS.

Central Circuit Court—Spring Term commences 20th April, and to continue three weeks. Autumn Term, 20th October, and to continue three weeks, with power to the presiding Judge to prolong the term from day to day, not exceeding six days in all.

Sessions after Term—The second Monday in February, March, and July, and to continue for a period not exceeding six days.

Supreme Court—Spring Term commences 20th May, to continue three weeks. Autumn Term, 20th November, and to continue three weeks, with power to the Judges to prolong the term from day to day, not exceeding six days in all.

Sessions after Term—The first Monday in February, March, April and July, and to continue for a period not exceeding six days.

Commissioners for Issuing Mesne and Final Process and Subpœnas returnable into the Supreme and Circuit Courts, for taking Affidavits, and Recognizance of Bail in any Suit depending in said Courts.

Central District—Matthew W. Walbank and Henry T. B. Wood, St. John's. Martin Williams, Bay Bulls.

Northern District—Lewis W. Emerson, John Fitzgerald, Harbor Grace. Israel McNeil, Carbonear. John C. Nuttall, John Wilcox, Brigus. John Lewis, Lower Island Cove. George W. R. Hierlihy, Bay Roberts. William Holden, Harbor Maine. James L. Mews, Hants Harbor. William Christian, Old Perlican. Michael Howley, New Perlican. Benjamin Sweetland and Robert Bayly, Trinity. Alexander Bremner, Catalina. John Lawrence, Bonavista. John T. Oakley, William Lang, Greenspond. James Fitzgerald, Fogo. John Peyton, Twillingate. Charles Newhook, New Harbor, Mi-

chael Murphy, King's Cove. John M. Maddock, Port de Grave. John Ryall, Heart's Content. Robert J. Pinsent, sen., Labrador.

Southern District—Luke Brown, Ferryland. Francis L. Bradshaw, Placentia. Thomas E. Collett, Harbor Buffett. John Hooper, Port-aux-Basque. William Pitman, Lamaline. Josiah Blackburn, Grand Bank. Francis A. Parsons, Burgeo. Thomas Read, La Poile. James Murphy, St. Mary's. Thomas Birkett, Harbor Breton. James Moran, Edward Morris and Thomas Winter, Burin. Nelson Bailie, Oderin. Joseph G. Haddock, Fortune, (Fortune Bay).

STIPENDIARY MAGISTRATES.

St. John's—Peter W. Carter and Thomas Bennett.

Concepticn Bay—Joseph Peters, Harbor Grace. Israel McNeil, Carbonear. John Wilcox, Brigus.

Trinity Bay—Benjamin Sweetland, Trinity. James L. Mews, Old Perlican.

Bonavista—David Candow.

Twillingate—John Peyton.

Ferryland—Edmund Hanrahan, Ferryland. Martin Williams, Bay Bulls.

Placentia and St. Mary's—Francis L. Bradshaw, Placentia. James Murphy, St. Mary's.

Burin—James Moran, M.D., Burin. Josiah Blackburn, Grand Bank.

Fortune Bay—Thomas Birkett, Harbor Breton.

LaPoile—Thomas Read.

JUSTICES OF THE PEACE.

For the Island of Newfoundland—The Judges of the Supreme Court, the Members of the Executive Council, and Peter W. Carter, Thomas Bennett, Charles Fox Bennett, Hon. John Kent, Hon. Ambrose Shea, Thomas Glen, Edward Hanrahan, Hon. Edward D. Shea, James J. Rogerson, Henry J. Kerr, Captain Heysham, R.N., and Lieutenant Bellett, R.N.

Central District—Stephen Rendell, Hon. John Winter, Hon. James Cormack, Joseph Peters.

Northern District—Benjamin Sweetland, John Peyton, John T. Oakley, John Tilley, James L. Mews, Robert Ollerhead, Alexander Bremner, John G. Skelton, Thomas Hutchings, John Munn, William H. Ridley, David Candow, William S. Green, John Rorke, James L. Prendergast, John Wilcox, James Keeping, Charles Newhook, Philip Levesconte, James Fitzgerald, Joseph Peters, Lewis W. Emerson, Richard Berney, M.D., Israel McNeil, John Lewis, Reuben Bemister, George Skelton, John McCarthy, Michael Howley, Michael Murphy, James Saint, Peter Ward, James Alcock, William Stirling, Joseph J. Pearce, Nathan Norman, William Lang, William Holden, Richard Cormack, Hay Findlater, John Sheehan, William P. Taylor, Gilbert H. Cole, John W. Owen, George W. R. Hierlihy, James N. Leamon, Edward T. Pike, James L. Noonan, Alexander W. Bremner, George C. Rutherford, Patrick Nowlan, James Tara-

han, John M. Maddock, Benjamin T. H. Gould, Michael Dwyer, William J. S. Donnelly, James Burden, James Winsler, Charles Furey, John Bartlett, Robert Leamon.

Southern District—John L. McKie, Francis L. Bradshaw, Thomas E. Gaden, Josiah Blackburn, James Murphy, Thomas Reed, Thomas Renouf, Edward Evans, Thomas E. Collett, Francis Berteau, Robert H. Dawe, John Walsh, John O'Neill, Owen Pine, Richard Marshall, Luke Brown, Samuel Howe, William F. Gallop, Patrick Furlong, Thomas Winter, Philip Sorsoliel, Martin Williams, John W. English, Thomas Birkett, John Jordan, Richard McGrath, John Hoopcor, Thomas R. Bennett.

St. George's Bay—Horatio H. Forrest, Edwin Alexander.

Labrador—Nathan Norman, Thomas R. Crockwell, Donald A. Smith, William B. Bendall, Sampson Daw, Thomas G. Larmour, George Goodridge.

CLERKS OF THE PEACE.

St. John's—(for Central District)—Robert R. W. Lilly. Harbor Grace—John Fennell. Carbonear—John Mackay. Brigus—John C. Nuttall. Trinity—Robert Bayly. Bonavista—John Lawrence. Twillingate—Aaron A. Pearce. Burin—Edward Morris. Harbour Breton—Samuel Howe.

CORONERS.

St. John's—Joseph Shea, M.D. Harbour Grace—Joseph Peters. Bay de Verds, John Lewis. Trinity, Benjamin Sweetland. Greenspond, Dr. Skelton. Ferryland, John Stephenson. Bay Bulls, Martin Williams. Trinity Bay (South Side), Michael Howley. Bonavista, John Lawrence. Harbor Main, ——. District of Twillingate and Fogo, James Fitzgerald. Harbor Breton, ——. Hermitage Bay, William G. Gallop. Burgeo and La Poile, Dr. Brown.

POLICE.

General Superintendent of Police Constabulary for Newfoundland—Timothy Mitchell. St. John's—Serjeants, James Kenna and John Nicol.

Harbor Grace—High Constable, Luke Fallon.

Carbonear—High Constable, Peter McBaie.

INSPECTORS OF WEIGHTS AND MEASURES.

Thomas S. Dwyer, St. John's. William Meagher, Harbor Grace. Peter McBaie, Carbonear. Nicholas Jeynes, Brigus. John Mifflin, Ragged Harbor to Spiller's Cove inclusive, (District of Trinity.) William Harding, District of Burin. Henry Camp, from Pass Island to Cape Le Hune, District of Burgeo. John Lawrence, Bonavista South. Charles Calpin, Bay Roberts. William D. Cross, North Side of Trinity Bay. John G. Lucas, Fogo. James Lockyer, and James Collis, Trinity. Marmaduke Clow, District of Ferryland. Albert Stirling, District of Fortune Bay. Frederick White, Greenspond.

Educational Institutions.

ST. JOHN'S ACADEMY.

Directors—Church of England Board—Right. Rev. the Lord Bishop, Thomas Bennett, Robert Carter, Hon. the Chief Justice, Hon. Judge Robinson. Head Master—Rev. Joseph F. Phelps; Second Master—Elias Maret.

Roman Catholic Board—Right Rev. Dr. Mullock, Hon. John Kent, Hon. Laurence O'Brien, Hon. Judge Little, Hon. James Cormack. Masters—Rev. M. Walsh, Rev. Dr. Howley, T. Talbot, D. Bennett.

General Protestant Board—Walter Grieve, Thomas McMurdo, John B. Bulley, Hon. James O. Fraser, Hon. P. G. Tessier, William Boyd. Master—Adam Scott.

NEWFOUNDLAND WESLEYAN ACADEMY.

Directors—Rev. John S. Peach, James J. Rogerson, Hon. Nicholas Stabb, Hon. John Bemister, Joseph Woods. Head Master—Alexander Simpson Reid, M.A. Assistant Teacher—Samuel A. Chesley, B.A.

HARBOR GRACE GRAMMAR SCHOOL.

Directors—John Munn, T. Harrison Ridley, Hon. John Hayward, Hugh W. Trapnell, John Ryan, D. Greene, W. J. S. Donnelly. Head Master—John I. Roddick.

CARBONEAR WESLEYAN GRAMMAR SCHOOL.

Master—Josiah Ogden.

COMMERCIAL SCHOOLS.

Carbonear—Commissioners, Rev. W. J. Hoyles, W. Hawker, and John Pearce, Church of England School. Right. Rev. Dr. Dalton, Rev. J. O. Connor, and Richard McCarthy, Roman Catholic School. Rev. J. S. Peach, Israel McNeil, Benjamin T. H. Gould, J. F. Apsey, and William Penny, Wesleyan School.

Brigus—Commissioners, James N. Leamon, John C. Nuttall, Thomas Kelly, Rev. R. H. Taylor, James Tarahan. Teacher, William Greene.

Bay Roberts—Commissioners, the Wesleyan Minister for the time being, William S. Green, Isaac Bartlett, Robert Dawe. Teacher, ———.

Broad Cove—Commissioners, Rev. John Waterhouse, Rev. Thomas Fox, John Lewis, William Butt, jr. Teacher, Joseph Thistle.

Old Perlican—Commissioners, Rev. James A. Duke, Jabez Tilley, Stephen K. March. Teacher, William Christian.

Bonavista—Commissioners, Peter Ward, James Saint, John Lawrence. Teacher, Samuel Rowsell.

King's Cove—Commissioners, Rev. M. Scanlan, Michael Murphy. Teacher, William Hartery.

Ferryland—Commissioners, Rev. James Murphy, Luke Brown. Teacher, Patrick Flannery.

Burin—Episcopal Branch, James Bristow, Teacher; Roman Catholic, Michael O'Donnell, Teacher; Wesleyan, — Bird, Teacher.

Twillingate—Commissioners, Rev. Thomas Boone, Rev. John Goodison, John W. Owens, William Lethbridge, Jonathan Mitchell, J. B. Blandford. Teacher, John E. Duder.

Muddy Hole—Teacher, John Wheeler.

Seldom-come-Bye—Teacher, John Pike.

Bay de Verds—Teacher, Patrick Fox.

Harbor Grace—(River Head)—Teacher, Michael Scully.

Harbor Main—Teacher, Cornelius Kennedy.

Bay Bulls—Teacher, Terrence Morrissey.

St. Mary's—Teacher, Patrick Walsh.

Great Placentia—Teacher, Francis Curtis.

COLONIAL AND CONTINENTAL CHURCH SOCIETY.

[Incorporated 1862—Instituted originally as the Newfoundland School Society, 1823.]

Patron—Her Most Gracious Majesty the Queen. Vice Patrons—His Grace the Archbishop of Canterbury, His Grace the Archbishop of York, His Grace the Archbishop of Armagh. President—the Most Hon. the Marquis of Cholmondeley, and 74 Vice-Presidents, consisting of Peers of the United Kingdom, English and Colonial Bishops, Deans, Colonial Governors, (including the Governor of Newfoundland) Members of Parliament, &c., &c.

Corresponding Committee in Newfoundland—President, Hon. John Winter, M.D.; Vice-President, Hon. Frederick B. T. Carter; Treasurer, E. L. Jarvis; Inspector and Organizing Master, J. W. Marriott; Secretary, James Bayly; Rev. T. M. Wood, R. J. Pin-sent, jr., Hon. J. S. Clift, John Bowring, D. W. Prowse, Theodore Clift, Archibald Emerson. Bankers, Union Bank.

School Teachers—St. John's, (Central School) Mr. Marriott and Robert Lawrence, Boys; Miss Connell, Girls; Training Pupil Teachers of the Society, Misses Saunders and Mullings; Infants' School, Miss Anderson. Belloram, Rev. J. and Mrs. Marshall. Petty Harbor, Mr. and Mrs. Bishop. Portugal Cove, Mr. Ward. Brigus, Misses Mills. Port de Grave, Mr. and Mrs. Maddock and Miss Andrews. Spaniard's Bay, Mr. and Mrs. Earle. Bishop's Cove, Mrs. Burke. Harbor Grace, Mr. and Miss Gardner. Heart's Content, Miss Winter, (temporary). Trinity, Mr. Collis and Miss Lockyer. Bonavista, Mr. and Mrs. Lawrence. Salvage, Mr. and Mrs. Kelligrews. Greenspond, Mr. and Mrs. H. Lind. Swain's Island, Mr. Edward Bishop. Twillingate, Mr. Crosby. Fogo, Mrs. Plomer.

WESLEYAN SCHOOL AND AGENCY SOCIETY.

Committee—Rev. J. S. Peach, Chairman and Treasurer; Rev. J. Dove, Secretary; the Ministers of the Newfoundland District, and John Munn, James J. Rogerson, John Bulley, Joseph Woods, Israel McNeil, James N. Leamon.

Teachers—Pouch Cove, Francis Skeans. Carbonear, Edgar Taylor and Jane Taylor. Cupids, John C. Moors. Port de Grave, John A. Brown. Broad Cove, Joseph Thistle. Old Perlican, William Christian. Catalina, Miss Snelgrove. Flat Island, Joseph N. Parsons. Sound Island, Charles Downs. Green's Harbor, Simeon Read. Glaria, Joseph Troke. Western Point, Henry Garland. Musgrave Town, Gideon Way.

PRESBYTERIAN (ST. ANDREW'S) SCHOOL, ST. JOHN'S.

Committee—John Boyd, Secretary; Gilbert Browning, Alexander McKay, Andrew Thomson. Teacher—Robert Stott, M.A.

BOARDS UNDER EDUCATION ACT.

St. John's—Rev. G. M. Johnson, Rev. John Prince, Rev. Moses Harvey, Rev. Thomas M. Wood, Rev. D. McRae, Rev. R. S. Caswall, M.A., William H. Mare. Hon. James S. Clift, Hon. John Winter, M.D., W. V. Whiteway, James J. Rogerson, and Dr. Crowdy.

Harbor Grace—Rev. Bertram Jones, Rev. John S. Phinney, Rev. Alexander Ross, T. Harrison Ridley, Hon. John Hayward, and Johnstone F. Burrows.

Carbonear—Rev. John S. Peach, Rev. William J. Hoyles, and John Rorke, Edward Pike, James Forward, jr., Israel McNeil, and Benjamin Gould.

Bay Roberts—Rev. W. E. Shears, the Wesleyan Minister for the time being, William S. Green, Isaac Bartlett, Robert Dawe.

Port de Grave—Rev. James C. Harvey, Dr. Brown, J. M. Maddock, John Andrews, Thomas Batten.

Brigus—Rev. W. E. Shenstone, Rev. Robert H. Taylor, and Christopher Norman; James Wilcox, Jonathan Percey, John Bartlett, James N. Leamon, John Smith.

Bay de Verds—Rev. John Waterhouse, Rev. Oliver Rouse, Rev. T. Fox, John Lewis, William Butt, William Lacey.

Trinity Bay North—Rev. Benjamin Smith, and Benjamin Sweetland, Robert Bayly, Alexander Brenner, jr., Gilbert H. Cole, Dr. Robert White.

Trinity Bay West—Rev. George Gardner, and Robert Ollerhead, James Moore, Robert Rockwood, Heart's Centent; Charles Newhook, New Harbor; James Wiseman, Heart's Delight; Reuben Bemister, New Perlican; Elias Warren, Joseph Harnum.

Trinity Bay South—Rev. James A. Duke, Rev. O. Rouse, Rev. John M. Pike, James L. Mews and Jabez Tilley.

Trinity Bay East—Rev. William Netten, Rev. Charles Ladner, and Alexander Bremner, William Norman, John Daymond, Robert Tilley, jr., and Benjamin Snelgrove.

Bonavista Bay North—Rev. W. J. Milner, and John T. Oakley, George Skelton, M.D., James Noonan, Darius Blandford, Charles Edwards.

Bonavista Bay South—Rev. A. E. C. Bayly, Rev. James Dove, and James Saint, John G. Skelton, William Brown, Stephen Abbott, David Candow.

Bonavista Bay West—Rev. W. Kirby, John Shears, Open Hall; and Samuel Coffin, William Hancock, jr., and David Candow, jr.

Fogo—Rev. A. M. Oakley, Rev. George Forsey, and Hay Findlater, Peter Carter, Henry Simons, James Rolls, — Williams, (Bard Island Harbor), Henry Banks.

Twillingate—Rev. Thos. Boone, Rev. John Goodison, and John Peyton, William Lethbridge, Samuel Baird, Rev. Josiah Darrell (Herring Neck), and William Hudder.

Moreton's Harbor—Rev. George Hooper, Rev. Henry L. Cranford, and Josiah Manuel, Exploits; Mark Osmond, Samuel Britt, John Taylor.

Ferryland—Rev. John M. Noel, James Carter, John Morry, Peter Winsler, Daniel H. Winsler, William T. S. Carter.

Placentia —Rev. John Kingwell, James Butler, Thomas E. Collett, George H. Bennett, Thomas Collins, (Oderin), James Hollett, and James Chalmers.

Burin—Rev. Thomas Harris, Rev. William Rozier, Francis Berteau, Owen Pine, Richard Willie, George Goddard, and Wm. Paul.

Lamaline—Rev. A. E. Gabriel, George H. Evans, James Pitman, George Bust, and Thomas Lasky.

Grand Bank—Rev. S. T. Teed, Edward Evans, Josiah Blackburn, James Hickman, Jonathan Snook, Edward Bennett, James Lake.

Fortune Bay—Rev. W. K. White, Rev. E. Colley, Rev. John Marshall, Samuel Howe, Clement Mallett, W. J. Gallop, Thomas R. Bennett.

Burgeo—Rev. John Cunningham, Rev. Edward Colley, George Hunt, M.D., William Scott, Stephen Vatcher.

La Poile—Rev. George S. Chamberlain, Rev. Joseph Pascoe, Thomas Read, William Thomas, Thomas Anderson, Philip Sorsoliel, and Philip Gruchy.

Channel—Rev. W. W. LeGallais, Rev. Isaac Howie, John Gilman, John Pike, William Gillam, John LeBrook, and Edward Genge.

Protestant Inspector of Schools—John Haddon.

ROMAN CATHOLIC SCHOOLS.

St. John's—Orphan Asylum, (Boys). Teachers—Michael O'Donnell, Francis Grace; Industrial Department, Bartholomew Connors.

St. Patrick's, River Head—Teacher—John Dalton.

Harbor Grace—St. Patrick's Free School, (Boys.) Teacher—
— Hamilton.

BOARDS UNDER EDUCATION ACT.

St. John's—Right Rev. John T. Mullock, D.D., Hon. John Kent, Hon. Laurence O'Brien, Richard Howley, Hon. James Cormack, Hon. Robert Kent, and Edward St. John.

Harbor Grace, Carbonear, Bay de Verds, and Trinity South and West—Right Rev. Dr. Dalton, John McCarthy, Patrick Devereux, James L. Prendergast, Michael Bolger, W. J. S. Donnelly, and Thomas Greene.

Brigus—Rev. E. O'Keefe, Patrick Nowlan, and Richard Cormack.

Harbor Maine—Very Rev. Kyran Walsh, V.G., and William Holden, Richard Woodford, Charles Furey, and William Woodford.

Trinity Bay North—Right Rev. Dr. Dalton, Rev. M. Scanlan, and William Hartery, James Connors, Michael Murphy, John Ryan, and John Murphy.

Fogo—Right Rev. Dr. Dalton, Rev. James Brown, and J. Fitzgerald, Miles Burke, (Joe Bat's Arm), William Green, Daniel Bryan (Tilton Harbor).

Ferryland—Rev. James Murphy, Rev. William Forristal, and Henry O'Neil, Philip Jackman, Nicholas Power, Richard Cashin, Gerald Jackman.

Bay Bulls—Rev. P. Cleary, and Martin Williams, Martin Driscoll, Michael Driscoll, J. Blackler, Michael Carey, (Witless Bay) and Thomas Gatherall (Balline).

Great Placentia—Rev. E. Condon, F. L. Bradshaw, Maurice Power, Thomas Rielley, John Sinnott, Francis Mooney, Samuel Collins.

Little Placentia—Rev. Pelagius Nowlan, and Thomas Freeman, Alexander Burke, John Rielley, and Thomas Keits.

Placentia West—Rev. James Walsh, and Thomas Sullivan, Timothy Connors, Daniel Ryan, and Dennis Ryan.

St. Mary's—Rev. John Ryan, Rev. J. Ryan, and J. Walsh, John Grace, William Burke, Michael Fagan, James Murphy, and John Whelan.

Trepassey—Rev. Thomas Hennebury, and James Waddleton, John Tobin, James Devereux, John Neill, jr., and John Hewett.

Burin—Rev. John Cullen, Richard Marshall, John Power, Matthew Marshall, Edward Morris, and William Fitzpatrick

Fortune Bay—Rev. E. Brennan, Rev. John Cullen, and P. Burke, W. Burke, P. Burke, jr., T. Kinshella, and T. Hearne.

Roman Catholic Inspector of Schools—Michael J. Kelly.

Ecclesiastical Department.**CHURCH OF ENGLAND.****DIOCESE OF NEWFOUNDLAND.**

The Right Rev. EDWARD FEILD, D.D., Lord Bishop of Newfoundland.

The Right Rev. JAMES B. KELLY, M.A., Coadjutor Bishop.

DEANERY OF AVALON.

Rural Dean—Rev. T. M. Wood.

Rev. Robert C. Caswall, M.A., Cathedral.

Rev. George M. Johnson, Cathedral.

Rev. T. M. Wood, St. Thomas', St. John's.

Rev. E. Botwood, St. Mary's.

Rev. R. M. Johnson, St. John's Outharbors.

Rev. Benjamin Fleet, Foxtrap.

Rev. George Hutchinson, B.A., Topsail.

Rev. ———, Portugal Cove.

Rev. John M. Noel, Ferryland.

Rev. William Pilot, Quidi Vidi.

Rev. Frederic Cuyler, M.A., ———.

DEANERY OF CONCEPTION BAY.

Rural Dean— ———.

Rev. Bertram Jones, Harbor Grace.

Rev. William J. Hoyles, Carbonear.

Rev. Oliver Rouse, Bay de Verds.

Rev. J. C. Harvey, Port de Grave.

Rev. Robert H. Taylor, Brigus.

Rev. W. C. Shears, Bay Roberts.

Rev. H. M. Skinner, Upper Island Cove.

DEANERY OF TRINITY BAY.

Rural Dean—Rev. Benjamin Smith.

Rev. B. Smith, Trinity.

Rev. Henry Petley, M.A., New Harbor.

Rev. George Gardner, Hearts Content.

Rev. William Netten, Catalina.

DEANERY OF BONAVISTA BAY.

Rural Dean—Rev. A. E. C. Bayly.

Rev. A. E. C. Bayly, Bonavista.

Rev. William Kirby, King's Cove.

Rev. Charles R. West, Salvage.

Rev. William J. Milner, Greenspond.

Rev. John G. Cragg, Pinchard's Island.

DEANERY OF NOTRE DAME BAY.

Rural Dean—Rev. T. Boone.

Rev. Thomas Boone, Twillingate.

Rev. Josiah Darrel, Herring Neck.
 Rev. A. M. Oakley, Fogo.
 Rev. George H. Hooper, Exploits Burnt Island.
 Rev. Robert Temple, White Bay.

DEANERY OF PLACENTIA BAY.

Rural Dean— — —.

Rev. J. Kingwell, Harbor Buffett.
 Rev. W. Rozier, Burin.
 Rev. A. Gabriel, Lamaline.

DEANERY OF FORTUNE BAY.

Rural Dean—Rev. W. K. White.

Rev. W. K. White, Harbor Briton.
 Rev. E. Colley, Hermitage Cove.
 Rev. J. Cunningham, Burgeo.
 Rev. G. S. Chamberlain, La Poile.
 Rev. W. W. LeGallais, Channel.
 Rev. Henry Lind, St. George's Bay.
 Rev. Ulric Rule, Bay of Islands.
 Rev. John Marshall, Belleoram.

LABRADOR.

Rev. Robert Dobie, Forteau.
 Rev. W. Epiphanius Wilson, Battle Harbor.

THEOLOGICAL INSTITUTION.

Visitor—The Lord Bishop.

Principal— — —.

Vice-Principal—Rev. William Pilot.

Students—Theophilus George Netten, John Lockward, Walter Smith, Christopher Meek, John Bishop, Charles Warren, Arthur Winsor.

NEWFOUNDLAND CHURCH SOCIETY.

Patron—His Excellency the Governor.

President—The Right Rev. the Lord Bishop.

Vice-Presidents—Rev. R. Caswall, M. A., the Revds. the Rural Deans.

Treasurer—William H. Mare.

Secretary—Rev. G. M. Johnson.

Committee—John Tunbridge, J. C. Withers, W. V. Whiteway, Q.C., Hon. F. B. T. Carter, Q.C., C. Crowdy, M.D., G. T. Rendell, Hon. the Chief Justice, H. LeMessurier, Hon. John Winter, M.D., J. H. Warren, H. K. Dickinson, Hon. Judge Robinson, T. Bennett, J.P., G. J. Hayward.

CHURCH OF SCOTLAND.

The Rev. DONALD McRAE, St. Andrew's Church, St. John's.

ROMAN CATHOLIC CHURCH.

DIOCESE OF ST. JOHN'S.

The Right Rev. JOHN THOMAS MULLOCK, D.D., Lord Bishop of St. John's.

Very Rev. P. Cleary, Dean.

Very Rev. K. Walsh, Vicar-General.

Very Rev. A. Belanger, Vicar-General.

St. John's Cathedral—Right Rev. J. T. Mullock, D.D., Rev. Jeremiah O'Donnell, Rev. Richard Howley, D.D., Rev. David O'Donnell, Rev. William Borne.

St. Patrick's (River Head)—Rev. John Conway, Rev. J. Scott.

St. John's College—Rev. Michael Walsh, Rev. Thomas McGrath.

Portugal Cove—Rev. Thomas O Connor.

Torbay—Rev. Edward Troy.

Harbor Maine—Very Rev. Kyran Walsh, V.G., Rev. P. O'Donnell.

Witless Bay—Very Rev. Dean Cleary.

Ferryland—Rev. James Murphy.

Fermeuse—Rev. William Forristal.

St. Mary's—Rev. John Ryan, and Rev. J. Ryan, jr.

Trepassey—Rev. T. Hennebury.

Placentia—Rev. E. Condon.

Little Placentia—Rev. Pelagius Nowlan, and Rev. Richard Dunphy.

Oliver's Cove, St. Kyran's—Rev. James Walsh.

Burin—Rev. R. O'Donnell, Rev. M. Berny.

Harbor Breton—Rev. Robert Brennan.

St. Lawrence—Rev. John Kinsella.

Brigus—Rev. E. O. Keefe.

St. George's Bay—Very Rev. Alexander Belanger, V.G.

French Shore—Served annually by Priests from France.

College of St. Bonaventure, St. John's—Rev. M. Walsh, Principal and Professor. Rev. Thomas McGrath, Director; Thomas Talbot, Professor of Classics and Belles Letters; — — —, Professor of Science; D. Bennett, Professor of Music.

Convents in the Diocese of St. John's, 14—St. John's, 4; Brigus, 1; Harbor Main, 1; St. Mary's, 1; Witless Bay, 1; Ferryland, 1; Fermeuse, 1; Burin, 1; Placentia, 1; Torbay, 1; Petty Harbor, 1.

St. Michael's Female Orphanage, Belvedere—Orphans, between 70 and 80.

One House of Mercy, Belvedere, for girls out of place.

St. Clare's Boarding School, under care of Sisters of Mercy Convent.

DIOCESE OF HARBOR GRACE.

The Right Rev. JOHN DALTON, D.D., Lord Bishop of Harbor Grace. Rev. John Walsh, Very Rev. H. Carfagnini, and Rev. E. Francis Walsh.

Bay de Verds—Rev. B. Duffy.

King's Cove—Rev. James Cummins.
 Carbonear—Rev. John O'Connor.
 Fogo—Rev. J. Brown.
 Bonavista—Rev. Matthew Scanlan.
 Convents—Harbor Grace, 1; Carbonear, 1.

CONGREGATIONAL CHURCH.

The Rev. ———, Queen's Road Chapel, St. John's.

WESLEYAN METHODIST CHURCH.

The Rev. JOHN S. PEACH, Chairman of the District.
 The Rev. James Dove, Financial Secretary.
 St. John's—Rev. John Prince, Rev. Charles Comben, Rev. S. Ackman.
 Harbor Grace—Rev. John S. Phinney.
 Carbonear—Rev. John S. Peach, Rev. T. Allen.
 Brigus—Rev. William E. Shenstone.
 Port de Grave—Rev. John Reay.
 Blackhead—Rev. John Waterhouse.
 Island Cove—Rev. Thomas Fox.
 Old Perlican—Rev. James A. Duke.
 Hants Harbor—Rev. John M. Pike.
 Trinity— ———.
 Bonavista—Rev. James Dove.
 Catalina—Rev. Charles Ladner.
 Twillingate—Rev. John Goodison.
 Burin—Rev. Thomas Harris.
 Grand Bank—Rev. S. T. Teed.

MISSIONS OF CONFERENCE.

Labrador—Supplied during Summer by the Rev. T. Allen,
 Petites—Rev. Joseph Pascoe.
 Channel—Rev. ———.
 Exploits—Rev. Henry L. Cranford.
 Fogo—Rev. George Forsey.
 Greenspond—Rev. Isaac Howie.

FREE PRESBYTERIAN CHURCH.

The Rev. MOSES HARVEY, St. John's.
 The Rev. Alexander Ross, Harbor Grace.

LAYMEN LICENSED TO CELEBRATE MARRIAGE.

Charles Harris, Gooseberry Island.
 George Goodridge, Labrador.

Banks.

UNION BANK OF NEWFOUNDLAND.

Directors—Hon. I. O'Brien, Robert Grieve, Robert Alexander, Robert Thorburn, A. W. Harvey.

John W. Smith, Manager. Kandal Greene, Accountant and Teller. Charles S. Pinsent and Alfred G. Smith, Clerks. R. J. Pinsent, Q.C., Standing Counsel and Solicitor.

Discount Days—Mondays and Thursdays, from 12½ o'clock.

Hours of Business—From 10 a.m., to 3 p.m.

COMMERCIAL BANK OF NEWFOUNDLAND.

Directors—Stephen Rendell, Frederick J. Wyatt, James Goodfellow, Edwin Duder, Hon. J. Winter.

Robert Brown, Manager. Henry Cooke, Teller. John W. Hayward, Clerk. William B. Dryer, Clerk and Messenger. Hon. F. B. T. Carter, Q.C., Standing Counsel and Solicitor.

Discount Days—Tuesdays and Fridays, from 12½ to 1½ o'clock.

Hours of Business—From 10 a.m., to 3 p.m.

Chamber of Commerce, St. John's.

Hon. James S. Clift, President; Hon. P. G. Tessier, and Stephen Rendell, Vice-Presidents; J. Goodfellow, Secretary and Treasurer; Robert Grieve, Robert Alexander, Robert Thorburn, John Bowring, Edwin Duder, A. W. Harvey, T. W. Stabb, F. J. Wyatt, W. H. Mare.

Manager of Commercial Rooms—John B. Bulley.

Notaries Public.

St. John's—Hon. George H. Emerson, Robert Prowse, George F. Bown, Hon. Frederick B. T. Carter, Robert R. W. Lilly, Hon. Edward Morris, George J. Hogsett, William H. Mare, Matthew W. Walbank, Thomas J. Kough, William V. Whiteway, Hon. Nicholas Stabb, Matthew H. Warren, Robert J. Pinsent, jr., D. W. Prowse, Richard B. Holden, Samuel G. Archibald, John B. Bulley, Augustus O. Hayward, Henry K. Dickinson.

Harbor Grace—Hon. John Hayward, Andrew Drysdale, Lewis W. Emerson. Carbonear—Israel McNeil. Twillingate—John Peyton. Henry A. Clift. Brigus—William S. Mills. Bay Roberts—George W. R. Hierlihy. Bonin—Francis Bateau. Ferryland—John Stephenson.

Queen's Printer.

John C. Hier Withers, Esquire.

Foreign Consulates.

Portugal—Charles F. Bennett, Consul-General for Newfoundland. Vice-Consul's—Thomas R. Smith, St. John's; John Munn, Harbor Grace; William Junott, Burin; T. Howe, Harbor Breton and Gaultois; Gilbert Humphrey Cole, Trinity; Philip John Gruchy, La Poile; Charles Middleton, Burgeo; George Messervy, Jersey Harbor; James Philip LeGray, Little Harbor.

Spain—Don Hipolito de Uriarte, Consul of Newfoundland. Vice-Consuls—Federico Sevilla, St. John's; T. Harrison Kidley, Harbor Grace. Consular Agents—John Peyton, Twillingate; James L. Noonan, Greenspond; Dr. Hay Findlater, Fogo; Gilbert Humphrey Cole, Trinity; Philip Sorsoiel, Rose Blanche; Philip Hubert, Harbor Breton; Philip J. Gruchy, La Poile; Charles Middleton, Burgeo; William Gallop, Gaultois.

Prussia—Robert Prowse, Consul for St. John's; D. W. Prowse, Consular Agent.

Hamburgh—Robert Prowse, Consul; D. W. Prowse, Consular Agent.

France—J. C. Toussaint, Vice-Consul for Newfoundland.

Denmark—Hon. John Kent, Consul for Newfoundland.

Italy—James Bayly, Consular Agent for Newfoundland.

United States of America—Thomas N. Molloy, Consul for Newfoundland.

Sweden and Norway—Robert H. Prowse, Vice-Consul for Newfoundland.

Newspapers Published in the Colony.

Courier—Published every Wednesday and Saturday morning.

Daily News—Published every morning, Sundays excepted.

Express—Published every Tuesday, Thursday and Saturday morning.

Morning Chronicle—Published every morning, Sundays and Holidays excepted.

Newfoundlander—Published every Tuesday and Friday morning.

Public Ledger—Published every Tuesday and Friday morning.

Patriot—Published every Thursday afternoon.

Royal Gazette—Published every Thursday.

Standard (Harbor Grace)—Published every Wednesday morning.

Times—Published every Wednesday and Saturday morning.

Telegraph—Published every Wednesday morning.

The Temperance Monthly—Published on the 1st of every month.

Weekly Express—Published every Tuesday evening.

Military Establishment.

HEAD QUARTERS, }
St. John's, Newfoundland. }

General Staff—Commanding the Troops—Colonel Fitz William Walker, Royal Canadian Rifles. Fort Adjutant—Lieutenant W. Gillmor, Royal Canadian Rifles. Acting Garrison Chaplains—Rev. T. M. Wood, Church of England; Rev. J. O'Donnell, Roman Catholic; Rev. D. McRae, Presbyterian. Garrison Sergeant-Major and Military Clerk, 3d Class, Philip Molloy.

Royal Engineer Department—Commanding Royal Engineers. Captain W. C. Phillipotts. Clerk of Works, R. Lear. 2nd Class. Clerk (temporary), L. Hanmer. Office Messenger, Pensioner G. Clarke.

Commissariat Department—Assistant Commissary General, H. Moore. Commissariat Issuer, Sergeant Cross, R. C. R. Clerk, (temporary) C. F. Withell. Office Messenger, an Orderly from the Garrison.

Military Store and Barrack Departments—Assistant Superintendent of Stores and Acting Barrack Master, J. Tunbridge. Deputy Assistant Superintendent of Stores, N. Hanmer. Barrack Serjeants, P. O'Connor, J. Devanna. Storehouse-man, F. Scott. Warder, W. Hammond. Wharfinger (Queen's Wharf) W. Francis. Office Messenger, Pensioner A. Devanna.

Royal Artillery, No 1 Battery, 3rd Brigade—Brevet Major H. Stover, Commanding. Captain, H. J. F. Shea. Lieutenants, W. J. Latham, G. W. Hawkins, P. H. Bowen. Assistant Surgeon, A. R. Bartlett, (in medical charge of Troops). District Clerk, G. Scarlett.

Detachment Royal Canadian Rifles—Bt.-Colonel and Major, F. Walker, Commanding. Captains, A. B. Mitchell, J. T. L. Dobham. Lieutenants, W. Gillmor, W. Cavanagh, W. E. Harness. Ensign, A. J. Arnott. Assistant Surgeon, S. Robertson, M.D. Acting Paymaster, W. Cavanagh. Attached-Serjeant, C. Hicks, Army School-Master. Serjeant J. Parker, Army Hospital Corps. F. W. Kilpatrick, Corps of Armourers.

Garrison Library—In the Military Store Yard. Librarian, a non-commissioned Officer of the Garrison.

Posts and Works—St. John's, (North Side)—Forts Townsend and William. Signal Hill—(including Barracks at these posts) Storehouses, Magazines, and Armoury; Queen's, Waldegrave, Chain, Rock and Quidi Vidi Batteries; Military Hospital; Engineer House. Office, Workshops and Yard; Commissariat House, Office, Fuel Yard and Bakery; Military Store Houses, Offices and Yard, Queen's Wharf; Departmental Depôts. South Side,—Fort Amherst and Magazine; Fort Frederic dismantled. Rifle Range at Neagle's Hill.

A Gun is fired from the Queen's Battery as follows:—

At 12 o'clock noon, daily. From the 1st May to the 30th September inclusive, at 9 p.m. From the 1st October to the 30th April inclusive, at 8.30 p.m.

A Fog Gun is fired from Fort Amherst every hour, from Sun rise to Sun set, during foggy weather. Likewise, two Guns for Vessels when in distress at Sea.

When Practice is carried on by the Royal Artillery, a flag is hoisted as a signal at Fort Amherst.

The Block-house, at Signal Hill, is the Station from which all vessels entering the port of St. John's are signalled.

Newfoundland Volunteers.

[Annual vote by the Legislature for the maintenance of the Force—\$1200. Uniforms provided at the expense of the Government.]

Commander-in-Chief—His Excellency A. MUSGRAVE, ESQUIRE, Governor.

Deputy-Adjutant-General—Major Henry Renouf, St. John's Battalion.

ST. JOHN'S BATTALION RIFLES—4 COMPANIES.

(Uniform—Scarlet, blue facings.)

Lieut.-Colonel—Charles Mesham.

Major—Henry Renouf.

Adjutant—Captain Robert Dicks.

No. 1 Company—Captain, Henry J. Stabb. Lieutenant, Charles S. Pinsent. Ensigns, Thomas Brown, and John Roach.

No. 2 Company—Captain, Matthew Walbank. Lieutenant, ——. Ensign, William Thorburn.

No. 3 Company—Captain, Thos. Stabb. Lieutenant, Nicholas Stabb. Ensign, Charles Bowring.

No. 4 Company—Captain, Robert John Parsons, jr. Lieutenant, Henry Dryer. Ensign, ——. ——.

NO. 1 HARBOR GRACE RIFLES.

(Uniform—Blue, red facings.)

Captain—Honble. John Hayward. Lieutenant, Henry T. Moore. Ensign, Robert Munn.

Naval.

Commander-in-Chief on the West India and North American Station—Vice-Admiral ——. ——.

Ale,
App
Bacc
Beef

Bisc
Butt
Chee
Choc
Ciga
Coffe
Coal

Conf
Feat
Fish
Flour
Fruit
"

Lum
Mola
Oatm
Pork
Salt,
Shin
Shoc
Spiri

All c

Gin

Whis

Cord

Suga

"

Tea-

"

Table of Customs Duties,

According to Revenue Act passed 26th April, 1867.

Ale, Porter, Cider, and Perry, the gallon	\$0 08
Apples, the barrel	0 30
Bacon and Hams. Smoked Beef and Sausages, the cwt.	1 00
Beef and Pigs' Heads, Pigs' Feet, and Pigs' Hocks, salted and cured, the barrel of 200 lbs.	0 50
Biscuit or Bread, the cwt.	0 06
Butter, the cwt.	0 70
Cheese, the cwt.	1 25
Chocolate and Cocoa, the lb.	0 02
Cigars, the M.	2 64
Coffee, the lb.	0 02
Coals, imported or brought into the Port of St. John's, the ton	0 25
Confectionary, the cwt.	3 30
Feathers and Feather Beds, the lb.	0 02
Fish—dried, for every cwt. imported	1 32
Flour, the barrel	0 36
Fruit—dried, the lb.	0 02
“ Other descriptions, except Apples, the \$100	5 00
Lumber, the M.	0 60
Molasses, the gallon	0 05
Oatmeal and Indian Meal, the barrel	0 12
Pork, the barrel of 200 lbs.	0 70
Salt, the ton	0 12
Shingles, the M.	0 20
Shooks and Staves—manufactured and dressed, the \$100	11 00
Spirits, viz. :—Brandy or other Spirits, not herein defined or enumerated, and not exceeding the strength of proof by Sykes's Hydrometer, and so in proportion for any greater strength than the strength of proof, the gallon	1 20
All other Spirits, of greater strength than forty-three over proof, shall be deemed to be undefined Spirits, and subject to duty accordingly	
Gin and Rum, not exceeding the strength of proof by Sykes's Hydrometer, and so in proportion for any greater strength than the strength of proof, the gal.	0 60
Whiskey, not exceeding the strength of proof by Sykes's Hydrometer, and so in proportion for any greater strength than the strength of proof, the gallon	0 80
Cordials, Shrub and other Spirits, being sweetened or mixed so that the degree of strength cannot be ascertained as aforesaid, the gallon	0 50
Sugar—Loaf and Refined, the cwt.	3 20
“ Unrefined, the cwt.	1 98
“ Bastard, the cwt.	2 40
Tea—Souchong, Congou and Bohea, the lb.	0 08
“ All other sorts, the lb.	0 10

Tobacco—Manufactured and Leaf, the lb.	\$0 07
“ Stems, the cwt.	0 50
Timber, the ton	0 30
Vinegar, the gallon	0 06
Wines, viz. :—Port, Madeira, Hock, Burgundy, and Champagne, the gallon	1 00
Sherry, 12½ per cent. <i>ad valorem</i> , and, the gallon	0 72
Spanish Red, Sicilian, Figueira Red, Lisbon Common, Manzanilla, Malaga, Cape and Claret, the gallon	0 24
All other Wines, 12½ per cent. <i>ad valorem</i> , and the gal.	0 60
Anchors and Chain Cables, Copper and Composition Metal for Ships, viz: Bar, Bolt and Sheathing Nails; Iron, viz: Bar, Bolt, Sheathing, and Sheet; Wrought Nails; Cordage and Hemp Cables; Oak- um; Canvas; Corks and Corkwood; Fishing Tac- kle; Pitch, Tar, Rosin, Raw Turpentine; Staves undressed; Masts and Spars, Oats, Rice, Indian Corn, Pease, Bran, Medicines, the \$100	5 50
Goods, Wares and Merchandize, not otherwise enumera- ted, described or charged with duty in this Act, and not otherwise exempt, the \$100	11 00
Packages in which Dry Goods are imported, the \$100	11 00

LOCAL DISTILLATION:

Rum, not exceeding the strength of proof by Sykes's Hy- drometer, and so in proportion for any greater strength than the strength of proof, the gallon	0 40
Brandy, Gin, or other spirits, not herein defined or en- umerated, and not exceeding the strength of proof by Sykes's Hydrometer, and so in proportion for any greater strength than the strength of proof, the gallon	0 48

TABLE OF EXEMPTIONS.

Printing Presses, Printing Paper (Royal and Demy), Printing Types and all other Printing Materials
Printed Books, Pamphlets, Maps and Charts
Coin and Bullion, Hemp, Flax, Tow
Fresh Fish, Bait
Barley, Wheat, Eggs
Unmanufactured Wool and raw Cotton
Plants, Trees, Shrubs
Limestones
Specimens illustrative of Natural History
Works of Art—viz., Engravings, Paintings and Statuary, not in- tended for sale
Articles imported for Religious purposes, and not intended for sale
Manures of all kinds
Arms, Clothing and Provisions for Her Majesty's Land and Sea Forces
Passengers' Baggage, Household Furniture, and Working Tools and Implements, used and in the use of persons arriving in the Island

0 07	Refuse Rice, Seeds for Agricultural purposes
0 50	Vegetables of all sorts
0 30	Hides or pieces of Hides, not tanned, curried or dressed
0 06	Animals of all kinds
1 00	Coals (except when imported or brought into St. John's)
0 72	Poultry or Fresh Meats
0 24	Articles of every description imported for the use of the Governor
0 60	Donations of Clothing specially imported for distribution gratuitously by any Charitable Society
	Cotton Yarn
	Pig Iron, Coke
	Bark for Tanning Leather
	Sulphuric Acid when used for the manufacture of Manure
5 50	Materials for Sheathing the bottoms of Vessels, such as Zinc, Copper and Composition-metal, together with Nails, Paper or Felt, which may be used under the same, shall be free and exempt from duty when imported in the Vessel on which they are intended to be used, and entered as Ship's Stores; such Sheathing and Materials to be so used before the Ship again leaves Port, or the same shall be entered for duty in the ordinary way.
1 00	Twines, to be used for manufacturing Nets in this Colony.
1 00	Dye Stuffs
0 40	It shall not be lawful for any Importer of dried Fish to Warehouse the same in any of the Ports of this Colony or its Dependencies, without the payment of the duty hereinbefore imposed; and the provisions of any Act of this Colony with regard to the Warehousing of Goods on the first entry thereof, or to the allowance of Drawbacks upon exportation, shall not in either case apply to or be construed to apply to such fish.
0 48	All Yachts sailing under Warrant of the Lords of the Admiralty, or belonging to the Royal Yacht Club, shall be exempted on view of the said Warrant from payment of all local Duties whatsoever.

St. John's and Newfoundland Auxiliary Bible Society.

His Excellency the Governor, Patron. Hon. Nicholas Stabb, President. Stephen Rendell, William Boyd James N. Fraser, M.D., James Pitts, Hon. John Winter, Vice-Presidents. Robert Brown, Treasurer. Rev. Moses Harvey and John B. Bulley, Secretaries. Committee—Rev. John Prince, Rev. Donald McRae, Rev. S. Ackman, Hon. P. G. Tessier, Hon. J. O. Fraser. Hon. J. Bemister, James Bayly, G. Browning, R. Neyle, James Baird, E. L. Jarvis, John Woods, Robert Grieve, James Howe, J. Goodfellow, T. W. Stabb, Joseph Woods, Jabez N. Finlay, John Baird, D. Watson, J. Seaton.

Masonic.

Hon. James S. Clift, D.P.G. Master.

Henry T. B. Wood, D.P.G. Secretary.

St. John's Lodge, No. 579, R.E.—R. T. Rankin, W.M. Alfred Pike, S.W. Aubin Pearce, J.W. G. Lash, Treasurer. Henry T. B. Wood, Secretary. Moses Monroe, S.D. John Skoock, J.D. C. S. Pinsent and T. Swan, Stewards. F. Lang, I.G. W. Smith, Tyler.

Meetings on the first Friday in every month, at Masonic Hall, British Square.

Avalon Lodge, No. 776, R.E.—J. F. Chisholm, W.M. Alex. Grant, S.W. James Stott, J.W. George Badcock, Treasurer. Geo. H. Hutchings, Secretary. W. E. Hatchett, S.D. Henry Henderson, J.D. Charles Ellis and John Ebsary, Stewards. Charles Lewis, I.G. W. Smith, Tyler.

Meetings on the second Thursday in every month, at Masonic Hall, British Square.

Tasker Lodge, No. 454, R.S.—W. T. Parsons, R.W.M. W. Alexander, Proxy Master, Glasgow. Tho. M'Kenzie, W.S.W. George Dick, W.J.W. John McL. Muir, Treasurer. W. A. Mallett, Secretary. Adam Martin, S.D. George Webber, J.D. Thos. Gillespie and Alex. Smith, Stewards. R. G. Knight, I.G. W. Smith, Tyler.

Regular monthly meetings held on the third Thursday in each month, at the Masonic Hall, British Square, off Prescott Street.

St. John's Athenæum.

Hon. Nicholas Stabb, President. Hon. R. Kent, D. W. Prowse, Vice-Presidents. A. J. W. McNeilly, B.A., Secretary. F. J. Wyatt, E. L. Moore, Curators. Committee—W. Boyd, James Fox, Wm. Pitts, James Baird, James Bryden, James Murray, James S. Winter, A. O. Hayward, Hon. J. O. Fraser. Charles Barnes, Librarian and Superintendent of Rooms.

Catholic Institute.

Right Rev. Dr. Mullock, Patron. Rev. R. Howley, D.D., President. J. J. Little, Vice-President. R. Rafter, Secretary. William Walsh, Treasurer. John Kitchin, Librarian. Council—Michael Stafford, Randal Greene, Philip Cleary, William Doughtney, Charles Kickham, Felix M'Carthy, William Reddin, James Gleeson, Thomas Farrell, T. N. Mooley.

Wesleyan Academic Literary Institute.

Stephen Rendell, President. Hon. J. B. Bismister, First Vice-President; Henry J. B. Woods, Second Vice-President. Alexander S. Reid, A.M., Secretary. John A. Reid, Treasurer. S. A. Chesley, B.A., Librarian. Committee—Rev. J. Prince, John B. Ayre, Thos. C. Geddes.

The Atlantic Telegraph Company.

[Incorporated by Act of Parliament, 1857]

Directors—The Right Hon. James Stuar^t Wortley, Chairman. Sir Curtis M. Lampson, Vice Chairman. G. P. Bidden, C.E., Francis Le Breton, Edward Cropper, Sir Edward Cunard, Bart., Samuel Gurney, M.P., Captain A. T. Hamilton, George Peabody, John Pender, M.P., W. H. Stephenson.

Consulting Scientific Committee—William Fairbairn, F.R.S., Manchester; Captain Douglas Galton, R.E., F.R.S., London; Professor William Thomson, F.R.S., Glasgow; Professor C. Wheatstone, F.R.S., London; Joseph Whitworth, F.R.S., Manchester.

Offices, 12 St. Helen's Place, Bishopgate Street Within, London.

George Seward, Secretary and General Superintendent. Cromwell F. Varley, Electrician. Freshfields and Newman, Solicitors. H. W. Blackburn, Auditor. The Bank of England, and Messrs. Glyn, Mills & Co., Bankers, London.

The Anglo-American Telegraph Company.

(LIMITED.)

[Incorporated under the Companies' Act, 1862, which limits the liability of each Shareholder to the amount of the Shares subscribed by him.]

Capital—£600,000 in 60,000 shares of £10 each.

Under arrangements with the Atlantic Telegraph Company, this Company will be entitled to receive £125,000 per annum out of the earnings from the working of the Atlantic Telegraph Company's lines, and they will also be entitled to receive £25,000 per annum from the New York, Newfoundland and London Telegraph Company, out of the earnings of that Company for through Messages. The agreements between the Companies provide for other contingent advantages.

Directors—George Peabody, Edward Cropper, Cap^t. A. T. Hamilton, Sir Richard Atwood Glass, Sir Daniel Gooch, M.P., Henry Bewley, Francis A. Bevan, J. R. McClean, C.E., Charles E. Stewart.

Barclay, Bevan, Tritton, Twells & Co., 54 Lombard Street, E.C., Bankers. J. C. Deane, Secretary. Brooking & Co., St. John's, Newfoundland, Agents.

New York, Newfoundland and London Telegraph Company.

Directors in New York—Peter Cooper, Moses Taylor, Cyrus W. Field, Marshal O. Roberts, Wilson G. Hunt.

Peter Cooper, President. Cyrus W. Field, Vice President. Moses Taylor, Treasurer. Edward Kavanagh, Secretary. David D. Field, Counsel. Alexander M. McKay, General Superintendent and Local Manager, St. John's.

Total Value

*Of the Imports and Exports of the Colony of Newfoundland,
from and to each Country, in the Year 1866.*

Countries.	Imports therefrom.	Exports thereto.
United Kingdom	\$2,447,722	\$1,523,241
Jersey	102,030	50,519
Canada	541,359	171,915
Nova Scotia	427,648	82,770
New Brunswick	10,770	50
Prince Edward Island	48,002	5,077
British West Indies	115,966	373,725
Malta		10,800
Hamburg	290,339	10,367
Spain	60,989	1,007,610
Portugal	36,639	911,908
Italy		146,001
Sicily	3,216	
United States	1,399,038	426,436
Foreign West Indies	281,073	112,132
Brazil		849,539
St. Peter's	17,058	12,215
Total.....	\$5,774,849	\$5,694,305

Table

*Shewing the Quantity and Value of Fish (dried) exported from
Newfoundland for the Years 1841 to 1866, inclusive.*

Yrs.	Qtls.	Value.	Yrs.	Qtls.	Value.
1841	1,009,725	£605,014	1854	774,118	£517,818
1842	1,007,930	561,950	1855	1,107,388	680,283
1843	936,202	532,194	1856	1,268,334	789,124
1844	852,162	482,480	1857	1,392,322	1,006,129
1845	1,600,333	536,994	1858	1,038,089	765,101
1846	879,005		1859	1,105,793	894,966
1847	837,973	489,910	1860	1,138,544	846,238
1848	920,363	491,924	1861	1,021,720	668,263
1849	1,175,167	588,728	1862	1,074,289	752,002
1850	1,089,182	532,969	1863	811,777	671,275
1851	1,017,674	493,014	1864	849,339	798,610
1852	973,731	463,741	1865	801,349	706,352
1853	922,718	561,100	1866	716,690	791,798

Ships Owned and Registered in Newfoundland.

Number of Vesse's	1,497
Tonnage	83,204

Revenue and Expenditure

Of the Government of Newfoundland, from 1857 to 1866.

	Revenue.			Expenditure.			Revenue.			Expenditure.			
1857	149,324	9	11	116,748	13	0	1862	116,929	17	1	138,058	17	6
1858	141,128	4	3	173,965	8	9	1863	113,034	1	9	115,225	4	6
1859	124,799	2	6	114,599	1	2	1864	125,158	19	0	125,159	6	0
1860	133,608	1	7	120,728	4	2	1865	130,417	10	6	156,454	9	3
1861	90,043	10	7	126,753	5	9	1866	150,289	14	5	139,841	15	0

A Return

Of the total Number, Tonnage, and Crews of Vessels Entered and Cleared at each Port in the Colony of Newfoundland for the Year 1866.

	Countries.			Entered.			Cleared.		
	No.	Tons.	Men	No.	Tons.	Men	No.	Tons.	Men
St. John's	678	110,479	5973	615	102,649	5674			
Twillingate	3	328	23	6	766	46			
Fogo	4	415	31	6	653	44			
Greenspond	9	1,125	71	3	291	20			
Trinity	5	512	45	9	1,053	66			
Catalina	4	602	29	3	404	19			
Carbonear	7	1,199	60	11	1,496	82			
Harbor Grace	178	25,386	1285	114	17,423	910			
Bay Roberts	3	382	24	4	502	33			
Brigus	5	654	36	6	786	47			
Ferryland	1	137	7	2	232	14			
Great Placentia	1	44	5						
Burin	20	1,357	95	13	1,083	70			
St. Lawrence	4	123	18						
Lamaline	26	512	103	3	100	13			
Fortune	1	28	4						
Harbor Briton	38	3,297	222	20	2,023	134			
English Harbor	37	2,547	215	34	2,833	217			
Pushthrough	16	350	61	2	50	9			
Gaultois	11	1,007	75	9	1,098	74			
Burgeo	19	839	82	8	461	44			
LaPoile	52	3,883	274	45	3,706	258			
Channel	39	1,798	164	36	1,633	154			
Total.....	1161	159,004	8902	949	139,242	7928			

Abstract from Newfoundland Census of 1857.

Names of Districts.	Number of Inhabitants.	No. of Males	No. of Females	No. of Various Religious Denominations.						
				Church of England.	Catholics	Wesleyans	Kirk of Scotland.	Free Kirk	Congregationalists.	Other Denominations.
St. John's, East	17352	8757	3595	3493	11867	1303	208	256	225	1
St. John's, West	13124	6701	6423	2162	10033	579	82	169	92	
HarborMaine(ConceptionBay)	5386	2789	2597	1160	4153	71	2			
Port-de-Grave ditto	6489	3349	3140	2726	1637	2112	1	73	13	
Harbor Grace ditto	10067	5285	4782	5490	3390	1112	2			
Carbonear ditto	5233	2675	2558	791	2582	1859		1		
Bay-de-Verds ditto	6221	3274	2947	446	1583	4191		1		
Trinity Bay	10736	5618	5118	6016	1253	3460		4	2	1
Bonavista	8850	4705	4145	5714	2030	1083		9	14	
Twillingate and Fogo	9717	5167	4550	6232	1442	2036		7		
Ferryland	5228	2776	2452	127	5093	8				
Placentia and St. Mary's	8334	4434	3900	966	7156	208	4			
Burin	5529	3005	2524	1356	2354	1810	1		1	7
Fortune Bay	3492	1994	1499	2787	647	30				29
Burgeo and LaPoile	3545	1961	1584	3172	89	282	2			
Totals	119304	62490	56814	42638	55309	20144	302	520	347	44
French Shore	3334	1778	1556	1647	1586					

The Census of the Labrador was cursorily taken by the late Superintendent of Fisheries (James L. Prendergast, Esquire,) in 1856 and 1857, but it is not sufficiently correct or full to form a part of the foregoing returns. The number of permanent residents, as given by that gentleman, from L'Anse Sablon to Sandwich Bay, both inclusive, including Belle Isle, is 1650, of whom 1331 are Protestants and 319 Catholics.

857.

Value of Imports and Exports

From the Years 1856 to 1866.

	Imports.	Exports.		Imports.	Exports.
1857	£1,413,432	£1,651,171	1862	£1,037,082	£1,171,723
1858	1,172,862	1,318,836	1863	1,077,272	1,233,353
1859	1,324,136	1,357,113	1864	1,067,062	1,111,330
1860	1,254,123	1,271,712	1865	1,104,078	1,144,358
1861	1,152,857	1,092,551	1866	1,251,217	1,233,766

Fire, Life and Marine Insurance Companies.

Phoenix Fire Insurance Company of London—Established 1782. Agents for Newfoundland, W. & G. Rendell, St. John's.

Pelican Life Insurance Company of London—Established 1797. Agents for Newfoundland, W. & G. Rendell, St. John's.

Agents for Lloyds.—Brooking & Co., St. John's. Ridley & Sons, Harbor Grace, Philip DeQuetteville & Brothers, Labrador. John P. Frecker, St. Pierre. Francis Berteau, Burin and Mortier.

Standard Life Assurance Company—Registered and Empowered under Act of Parliament. Annual Income, over £650,000. Accumulated and Invested Funds, £3,500,000. St. John's Branch, Hon. L. O'Brien, W. H. Mare, A. W. Harvey, Directors; Agent and Secretary, Frederick J. Wyatt.

Alliance British and Foreign Life and Fire Assurance Company, London. Capital, £5,000,000 sterling. Brooking & Co., Agents for Newfoundland.

The Royal Insurance Company, for Fire, Life and Annuities.—Royal Insurance Buildings, Liverpool; and 29 Lombard Street, London. Capital, £2,000,000 sterling. Job, Brothers & Co., Agents Newfoundland Branch.

Liverpool, London and Globe Fire and Life Insurance Company. Established 1836. Capital, £2,000,000 sterling. Invested Fund, £3,212,344. Income, £1,144,000. Bowring, Brothers, Agents for Newfoundland.

Britannia Life Assurance Office, London—St. John's Branch, D. W. Prowse, Agent.

Queen Insurance Company of Liverpool and London, for Fire and Life. Capital, £2,000,000 sterling. General Agent for Newfoundland, D. W. Prowse. Sub-Agent for Conception Bay, Hon. John Hayward.

International Life Assurance Society, of London. Capital, £500,000 sterling, in addition to about £100,000 currency, of reserved

16
85
1586
1047
1556
1778
3334
French Shore
e Su-
1856
art of
s, us
Bay,
Pro-

profits. Directors—Charles F. Bennett, Ewen Stabb, Hon. Ambrose Shea. Hon. N. Stabb, General Agent for Newfoundland.

Imperial Fire Insurance Company of London—Established 1803. Capital subscribed and invested, £1,600,000. Agents for Newfoundland, J. & W. Stewart.

Star Life Assurance Society, Chief Office, 48, Moorgate Street, London. St. John's—W. C. Simms, M.D., Medical Referee. Agent for Newfoundland, Joseph Woods.

Liverpool Underwriters' Association—Ridley & Sons, Harbour Grace, Agents.

Life Association of Scotland. Local Directors—H. K. Dickinson, Hon. James Cormack, Robert Grieve. Dr. W. C. Simms, Medical Officer. E. L. Jarvis, Secretary and Agent.

The Lancashire Insurance Company, (Fire and Life.)—Capital, £2,000,000 sterling. Agent for St. John's, Newfoundland, E. L. Jarvis.

Western Insurance Company (Marine and Fire) of England.—Agent, E. L. Jarvis.

Northern Assurance Company of London. Established in 1836. Capital, £2,000,000 sterling; accumulated Funds, upwards of £700,000; annual Revenue, over £230,000. Agent for Newfoundland, Augustus O. Hayward.

North British and Mercantile Insurance Company—Established 1809. Incorporated by Royal Charter and Special Acts of Parliament. Agent for Newfoundland, Hon. Ambrose Shea.

Canada Life Assurance Company—Established 1847. Capital, \$1,000,000. Dr. J. N. Fraser, Medical Adviser. Agent at St. John's, Newfoundland, James Bayly.

Commercial Union Assurance Society, 19, Cornhill, London.—Marine Branch,—5, Royal Exchange Avenue. Capital, £2,500,000. Agent, St. John's, Ewen Stabb.

Mutual Life Assurance—Scottish Provident Institution, instituted 1837. Medical Officer, J. N. Fraser, M.D. Agent for Newfoundland, Hon. J. O. Fraser.

Albert Medical & Family Endowment Life Assurance Company, with which is combined the Kent Mutual Assurance Society, London. Established 1838. Bankers, Commercial Bank of Newfoundland.

Mutual Marine Insurance Club of Conception Bay—John Fitzgerald, Secretary and Treasurer.

Mutual Insurance Society of Brigus, Conception Bay—James N. Leamon, Treasurer and Secretary.

Joint Stock Companies, Public Societies, &c.

St. John's Gas Light Company—Directors, Stephen Rendell, President; Hon. R. O'Dwyer, J. Bowring, Vice-Presidents; J. B. Wood, Hon. Laurence O'Brien, David Selater, Robert H. Prowse, W. F. Rennie, Secretary.

Harbor Grace Gas Company—Directors, John Mann, T. H. Ridley, W. J. S. Donnelly, Thomas Higgins, P. Devereux, Robert Walsh, G. C. Rutherford.

General Water Company, St. John's—Incorporated 1859. Directors—Hon. Ambrose Shea, President; Hon. Laurence O'Brien, and Ewen Stabb, (Government Directors). Hon. F. B. T. Carter, Q. C., Solicitor. Pierce M. Barron, Secretary. John T. Nevill, Assessor of Property. Thomas W. Pinsent, Collector of Rates and Assessments. John Martin, Engineer.

Harbor Grace Water Company—Directors, Thomas H. Ridley, President; W. J. S. Donnelly, Treasurer; John Mann, Hon. J. Hayward, Daniel Green, G. C. Rutherford, Nathaniel Davis. C. Watts, Secretary and Collector.

Agricultural Society—His Excellency the Governor, Patron.—Stephen Rendell, President. Hon. Judge Robinson, James J. Rogerson, John H. Warren, John Tanbridge, Vice-Presidents. Joseph Crowley, Treasurer. W. F. Rennie, Secretary.

St. John's Floral and Horticultural Society—President, Thomas Bennett. Vice-Presidents, Hon. R. J. Pinsent, James J. Rogerson. Treasurer and Secretary, J. J. Dearnin.

Harbor Grace Agricultural and Horticultural Society—Henry T. Moore, President. R. Walsh and G. Makinson, Vice Presidents. G. C. Rutherford, Treasurer. Claudius Watts, Secretary.

Newfoundland Fishermen's Society— — —, President.—Pierce Feehan, Vice-President. Thomas Geran, Assistant Vice-President. James McLaughlin, Treasurer. Thomas Jackman, Second Treasurer. Thomas Duff, Third Treasurer. Laurence Barron, Secretary. Thomas Mullins, Assistant Secretary. Physician, Thos. McKen, M.D.

Fishermen's Society, Heart's Content—Rev. G. Gardner, President. James Piercy and James Moore, Vice-Presidents. S. A. Earle, Secretary. R. Rockwood, Assistant Secretary. James H. Moore, Treasurer. J. Hopkins, jr., Assistant Treasurer. John Ryall, Medical Adviser.

Floating Dry Dock Company—S. Rendell, President. L. Tessier, P. Feehan, J. Goodfellow, J. McLaughlin, R. Grieve, John Bowring, Directors.

Vall's Joint Stock Company for Ship Biscuit Baking—S. Rendell, President; J. Bowring, R. Thorburn, E. Duder, A. W. Harvey Directors. William Wheatley, Manager.

St. John's Steamtug Company—Robert Alexander, John Bowring, Thomas H. Walters, James Goodfellow, Robert Grieve, Stephen Rendell, Augustus W. Harvey. T. H. Walters, Manager.

St. John's Phoenix Volunteer Fire Company—Francis Boggin, First Director. William Mullowney, Second Director. Patrick Reardon, Treasurer. Philip Hally, Secretary.

Cathedral Fire Brigade—William McGrath, First Director. Thos. Brine, Second Director. William Row, Treasurer. George Thomas, Secretary.

Harbor Grace Volunteer Fire Company—Michael Hartery, First Director. John Strathie, Second Director. Patrick Walsh, Treasurer. H. J. Fitzgerald, Secretary. S. Braker, Superintendent of Engine. William Tapp, Foreman of Levers.

Manufactories, Mills, &c., St. John's—2 Saw Mills, 1 Bone Mill, 1 Gas Manufactory, 2 Iron Foundries, 2 Distilleries, 1 Brewery, 1 Water Works, 4 Bakeries (by Machinery), 1 Patent Slip, 1 Floating Dock, 1 Oil Manufactory, 1 Fish Manure Manufactory, 1 Tannery, 1 Rope Walk. Brigus—1 Corn Mill. Harbor Grace—1 Corn Mill, 1 Gas Manufactory, 1 Water Works, 1 Patent Slip. Exploits Bay—2 Saw Mills. Middle Arm of Green Bay—1 Saw Mill. Exploits (Burnt Island)—2 Saw Mills. Hall's Bay—2 Saw Mills. Trinity Bay—5 Saw Mills.

Benevolent and Charitable Societies.

Benevolent Irish Society—Founded 1806. The Right Rev. Dr. Mullock, Patron. Hon. L. O'Brien, Vice-Patron. Hon. Edward Morris, President. John Casey, Vice-President. Thomas S. Dwyer, First Assistant. Michael J. O'Mara, Second Assistant. Richard Howley, Treasurer. Henry V. Borne, Secretary. William Doutney, Chairman Orphan Asylum. Michael Rice, Chairman of Charity. John Callahan, Chairman of Review and Correspondence. Michael Berney, Secretary Orphan Asylum School.

Church of England Asylum for Widows and Orphans—His Excellency the Governor, Patron. The Right Rev. Dr. Feild, Visitor and President. The Right Rev. J. B. Kelly, M.A., and Rev. T. M. Wood, Vice-Presidents. The Right Rev. the Visitor and President (*ex officio*), Henry K. Dickinson, Hon. John Winter, M.D., Trustees. Hon. James S. Clift, Treasurer. Rev. G. M. Johnson, Honorary Secretary. Charles Crowdy, M.D., Physician. Committee—Edwin Duder, Philip Hutchins, J. H. Warren, A. W. Harvey, Hon. Judge Robinson, Hon. the Chief Justice, William H. Mare, John Bowring, John Tunbridge.

St. John's Industrial Society—Miss Musgrave, Patroness. Mrs. Jarvis, President. Mrs. Hayward, Treasurer. Mrs. M. Harvey, Secretary. Committee—Mrs. Hoyles, Mrs. McMurdo, Mrs. J. B. Wood, Mrs. McLea, Mrs. LeMessurier, Mrs. Lash, Mrs. Goodfel-

low, Mrs. Goodridge, Mrs. McDonald, Mrs. Holden, Mrs. J. Prowse, Mrs. W. Boyd, Mrs. G. Robinson, Mrs. Walbank, Mrs. Mooney, Mrs. Tunbridge, Miss Arnott, Miss Jarvis, Miss Moore, Miss Whiteford.

Religious Tract and Book Society—Hon. P. G. Tessier, President. R. Brown, Treasurer, J. W. Marriott, Secretary. Committee—Rev. M. Harvey, Rev. D. McRae, Rev. John Prince, J. B. Bulley, S. Rendell, J. Seaton, W. Boyd, J. Bayly, Hon. J. Bemister, A. Goodridge, James Howe, R. Neyle, J. B. Wood, J. J. Rogerson.

St. George's Society—Augustus O. Hayward, President. Robert J. Prowse, and Joseph Crowdy, Vice-Presidents. Henry T. Wood, Treasurer. J. W. Withers, Secretary. Committee of Charity—The above named officers, *ex officio*, and the Rev. T. M. Wood, Rev. G. M. Johnson; Hon. J. S. Clift, Geo. Rendell, John Bowring, H. K. Dickinson, J. C. Withers, C. R. Ayre, G. F. Bown, J. B. Wood.

St. Andrew's Society—Robert Grieve, President. John B. McLea, Vice-President. James Baird, Treasurer. R. Stott, M.A., Secretary. Committee of Charity—Charles Rankin, Robert Blackwood, and Gilbert Browning. Medical Advisers, Drs. McKen and Fraser.

Newfoundland British Society—Samuel Carnell, President. Thomas Withycombe, Vice-President. Henry W. Seymour, Treasurer. William H. Charles, Secretary.

British Society of Conception Bay—George C. Rutherford, President. G. Howell, Vice-President. James Hipplesley, Treasurer.

Society of St. Vincent de Paul—Joseph J. Little, President. James Furlong, Vice-President. Capt. Wm. Coady, Assistant Vice-President. W. Kitchin, Treasurer. William Doutney, Secretary.

Grand Division of Sons of Temperance—Hon. J. Bemister, G.W.P. C. R. Ayre, G.W.A. E. Brace, G.S. James Murray, G.T. John Lang, G.Ch. H. C. B. Woods, G. Con. John N. Carter, G. Sen.

Deputy Grand Worthy Patriarchs in the Outports:—Edward Genge, Port-aux-Basque, Division No. 38. George Robinson, Petites, Division No. 39. John Scott, Grand Bank, Division No. 9. Dr. Robert White, Trinity, Division No. 8. John Wear, Olive Branch Division (Burin) No. 1. J. Paul, Ray of Hope Division (Burin) No. 12. William Harding, Star of the East Division (Burin) No. 7. John Dader, North Star Division, Twillingate, No. 15. Samuel Bind, for Green's Pond Division, No. 14. David Rogers, Harbor Grace Division, No. 16.

Free St. Andrew's Total Abstinence Association—President, Rev. M. Harvey.

Total Abstinence and Benefit Society—James Furlong, President. Robert Smith, Vice-President. John Kavanagh, First Assistant. Stephen Coady, Second Assistant. Philip Holly, First Treasurer.

Theo. O'Donohue, Second Treasurer. Michael J. Ellard, Secretary. John Carroll, Marshall. H. Shea, M.D., Medical Adviser.

Mechanics' Society—John Maher, President. William Kelly, Vice-President. William L. Mallowney, First Assistant. Charles Gamberg, Second Assistant. William McGrath, First Treasurer. John Mockler, Second Treasurer. Richard Hanley, Third Treasurer. John Trelegan, Secretary. Henry Shea, M.D., Physician.

Shipwrights' Benefit Society—Patrick Haliburton, President.—Samuel Walsh, 1st Vice-President. Daniel Condon, 2nd Vice-President. Ed. Knight, Treasurer. Jeremiah Hickey, Secretary.

Dorcas Society, St. John's—Mrs. J. W. Smith, President. Mrs. Bemister, Treasurer. Mrs. McRae, Secretary. Mrs. Rendell, Mrs. J. W. Smith, Mrs. Macpherson, Mrs. Reid, Collectors. Mrs. J. Baird, Mrs. Selater, Mrs. Smith, Mrs. McRae, Dispensers.

Benevolent Irish Society, Conception Bay—Founded in 1814.—The Right Rev. Dr. Dalton, Patron. John Fitzgerald, President. Patrick Devereux, Vice-President. Patrick Walsh, First Assistant. Maurice Connell, Second Assistant. Robert Walsh, Treasurer. James Bolger, Secretary. John Byrne, Chairman of Charity. Richard Walsh, Chairman of Review and Correspondence.

Trinity Benefit Club—Instituted 1838.—Patrick Murphy, President. Dr. White, Vice-President. W. D. Cross, Treasurer. James Collis, Secretary.

Appendix.

The following notifications and appointments have been made since the foregoing sheets went to press.

A. H. Forward, to be a member of the Road Board, at Carbonear, in the place of Moses Wilshear, left the Colony.

Joseph Mills, to be a member of the Road Board from Jacket's Arm to Head of Green Bay.

John Niffen, to be Surveyor of Shipping at Bird Island Cove and Catalina.

Richard Marshall, to be a member of the Road Board at Burin, in the room of Patrick Morris, deceased.

BUSINESS DIRECTORY

FOR THE TOWNS OF ST. JOHN'S, HARBOR GRACE,
AND CARBONEAR,

IN WHICH WILL BE FOUND THE NAMES, ADDRESS AND OCCUPATION
OF PERSONS ENGAGED IN THE VARIOUS DEPARTMENTS OF
MERCANTILE AND OTHER BUSINESS PURSUITS.

ST. JOHN'S.

AYRE & MARSHALL, Importers, General Drapers and Commission Merchants, 237 Water Street.—*See Advertisement.*

ARCHIBALD, E. M. Shipping and Commission Agent and Auctioneer, Market House.—*See Advertisement.*

BROOKING & CO., Merchants, Agents for Lloyds, and Agents for the Alliance Life and Fire Assurance Company of London, Water Street.—*See Advertisement.*

BAIRD BROTHERS, General Drapers, 187 Water Street.—*See Advertisement.*

BAIRD, D. & J., Family Grocery Warehouse, 217 Water Street.
See Advertisement.

Barnes, William & Co., Commission Merchants, 117 Water Street.

Bawn, George F., Notary Public, Commission Merchant and Auctioneer, 1 McBride Street.

Badcock, George, General Importer of British and Foreign Dry Goods, 231 Water Street.

Baine, Johnston & Co, Merchants, Water Street.

Bryden, James, Dry Goods Merchant, 285 Water Street.

BULLEY, WILLIAM, Commission Merchant, 395 Water Street.
—*See Advertisement.*

Bond, John, Merchant, 437 Water Street.

Boyd, J. & W., Commission Merchants, 327 Water Street.

Bennett, C. F. & Co., Merchants, 385 Water Street.

Bowring Brothers, Merchants and Agents for Liverpool and London Fire and Life Insurance Company, Water Street.

Boyd & McDougall, Merchants, 337 Water Street.

BLACKWOOD, A. & R., Hairdressers, Perfumery and Toy Warehouse, 240 Water Street.—*See Advertisement.*

CHAMBERS, T. J., General Grocer, Ships' Stores, and Tea and Coffee Depot, 195 Water Street.—*See Advertisement.*

CHISHOLM, J. F., Bookseller and Stationer, Dealer in Periodicals, &c., 175 Water Street.—*See Advertisement.*

CLIFT, THEODORE, General Commission Merchant and Auctioneer, 87 Water Street.—*See Advertisement.*

Clift, Wood & Co, Commission Merchants and Auctioneers, Clift's Cove, Water Street.

Carnell, Samuel., Carriage and Sleigh Builder, 114 Duckworth Street.

CHISHOLM, C. & D., St. John's Photographic Gallery, 4 Beck's Cove.—*See Advertisement.*

DEARIN, J. J., Wholesale and Retail Dealer in Drugs, Medicines, and Chemicals, 162 Water Street.—*See Advertisement.*

DEARIN, GEORGE H., Wholesale and Retail Dealer in Drugs and Medicines, 177 Water Street.—*See Advertisement.*

Duffy, John, Bookseller and Stationer, 280 Water Street.

Dickinson, Henry K., Broker and Commission Agent, 127 Water Street.

Duder, Edwin, Merchant, 353 Water Street.

EDENS, JOHN A., Wholesale and Retail Provision and Grocery Store, 151 and 153 Water Street.—*See Advertisement.*

EARLE, R. H., Watch-maker and Jeweller, 216 Water Street.—*See Advertisement.*

EVANS & LEMESSURIER, Commission Merchants, Water Street.—*See Advertisement.*

Elmsly and Thomson, General Importers and Grocers, 193 and 195 Water Street.

Fox, James, General Shipping Merchant, Dealer in Fish, Oils, &c., Hunter's Wharf.

Finlay, J. N., General Drapery and Millinery Goods, 275 Water Street.

Fraser, Hon. J. O., Merchant, and Agent for Mutual (Scottish Provident) Life Assurance Institution, 389 Water Street.

GEAR & CO., Wholesale and Retail Stove Manufacturers and Dealers, 169, 201, and 349 Water Street.—*See Advertisement.*

Grieve, W. & Co., Merchants, 179 Water Street.

Graham, James J., Bookseller and Stationer, 282 Water Street.

GLEESON, JAMES, Ironmongery Store and Sporting Depot, 107 Water Street.—*See Advertisement.*

Goodridge, Alan & Sons, Merchants, 325 Water Street.

Goff, Richard, Cabinet Maker, 11 Prescott Street.

Hutchins, Philip, General Importer, 223 and 225 Water Street.

Harvey, Tucker & Co., Commission Merchants, 109 Water Street.

HOGAN, PATRICK, Wholesale and Retail Provision and Grocery store, 197 Water Street.—*See Advertisement.*

HAYWARD, A. O., Agent for Northern Fire and Life Assurance Company, 262 Duckworth Street.—*See Advertisement.*

HENDERSON, D. J., Commission Merchant, 319 Water Street.—*See Advertisement.*

JOB, BROTHERS & CO., Merchants, Agents for Royal Insurance Company, Water Street.—*See Advertisement.*

JARVIS, EDWARD L., Agent for Life Association of Scotland—Lancashire (Fire and Life) Insurance Company, and Western (Marine and Fire) Insurance Company of England—Office, Exchange Building, Duckworth Street.—*See Advertisement.*

JORDAN & SONS, P., Clothiers and General Drapers, 222 Water Street.—*See Advertisement.*

Kent, J. & R., Merchants, 283 Water Street.

Kitchin, William, General Importer, 238 Water Street.

Knight, Samuel, Dealer in Lumber, Hardware, and Groceries, 173 Water Street.

LINDBERG, JOHN, Jeweller and Watchmaker, 171 Water Street.—*See Advertisement.*

Lash, J. & G., Confectioners, 303 Water Street.

MMURDO, T. & CO., Wholesale and Retail Chemists and Druggists, 210 Water Street.—*See Advertisement.*

Macpherson, Peter, Wholesale and Retail Grocery and Provision Dealer, 279 Water Street.

M'GRATH, THOMAS, Carriage Manufacturer, 115 Duckworth Street.—*See Advertisement.*

M'CONNAN, THOMAS, Bookseller and Stationer, 201 Water Street.—*See Advertisement.*

Morison, W. D., Commission Merchant, 301 Water Street:

Molloy, T. N. & Co., Commission Merchants and Auctioneers, 149 Water Street.

Mare, W. H., Broker and Commission Merchant, 183 Water Street.

March, S. & Sons, Merchants, 89 Water Street.

M'Kenney & Dicks, Photographers, 206 Water Street.

M'Bride & Kerr, Merchants, 241 Water Street.

Meehan, Edward, Commission Merchant, Water Street.

Nowlan, Michael, Wholesale and Retail Dealer in Bread Stuffs, Provisions and Groceries, Nos. 95 and 97 Water Street.

NEYLE, RICHARD, Importer of Hardware and Fishing Tackle, 234 Water Street.—*See Advertisement.*

O'Brien, L. & Co., Merchants and General Importers, 101 Water Street.

O'Mara, John (Estate of) Wholesale Groceries and Spirits, 99 Water Street,

O'Dwyer, Richard, Merchant, 291 Water Street.

PUTTS, J. & W., General Commission Merchants, and Auctioneers, 261 Water Street.—*See Advertisement.*

PARSONS, W. T., Watchmaker, Dealer in Clocks, Watches and Jewellery, 158 Water Street.—*See Advertisement.*

Page, F. R., Estate and Land Agent and Auctioneer, 306 Duckworth Street.

Peace, R. & Co., Dealer in Stoves and Tinware, 199 Water Street.

Prowse, R. & Sons, Commission Merchants, 227 Water Street.

PROWSE, D. W., Agent for Queen Fire and Life Insurance Company, 239 Duckworth Street.—*See Advertisement.*

RENDELL, W. & G., Commission Merchants and Estate Agents—Agents for the Phoenix Fire Assurance Company and the Pelican Life Insurance Company, 82 Water Street.—*See Advertisement.*

RANKIN & McMILLAN, Wholesale and Retail Grocers and Provision Dealers, 121, 123, 125 Water Street.—*See Advertisement.*

Rogerson, P. & Son, Merchants, 399 Water Street.

SHEA, HON. AMBROSE, Commission Merchant, Agent for North British and Mercantile Insurance Company—Steam Boat Depôt, where the largest size Ships can be coaled with dispatch.—*See Advertisement.*

Smith, Edward & Co., General Importers, Nos. 127, 135, 137 Water Street.

Seymour, Henry W., Dealer in Groceries and Provisions, 347 Water Street.

Shaw, James, Grocer, 305 Water Street.

Stabb, N. & Sons, Commission Merchants, 113 Water Street.

Stabb, Hon. N., Agent for International Life Assurance Company, 113 Water Street.

Stabb, Ewen, Merchant, 443 Water Street.

STEWART, J. & W., Merchants, and Agents for Imperial Fire Insurance Company, Water Street.—*See Advertisement.*

SCLATER, D. & Co., General Importers and Commission Merchants, 181 Water Street.—*See Advertisement.*

STEER, JOHN, Importer and Wholesale and Retail Dealer in Staple and Fancy Goods, 189 and 191 Water Street.—*See Advertisement.*

Tessier, P. & L., Commission Merchants, 07 Water Street.

Tarehin, John, Wholesale and Retail Dealer in Provisions and Groceries, Water Street.

Thomas, Nathaniel, Hairdresser, dealer in Jewellery and Fancy Goods, 168 Water Street.

WYATT, FREDERICK J., Merchant, Agent for the Standard Life Assurance Company, Water Street.—*See Advertisement.*

Walsh, William P., Wholesale and Retail Dealer in Provisions and Groceries, 145 Water Street.

WOODS, JOHN, Commission Merchant and Auctioneer—Patent Slip—Agent for Gardner's Marine Copper Paint—Dealer in Lumber, 5 Water Street.—*See Advertisement.*

Whiteford, James A., Chronometers, Musical Instruments, Watchmaker, 224 Water Street.

WOOD, J. P., Photographic Artist, 240 Water Street.—*See Advertisement.*

WOODS, JOSEPH, Agent for Star Life Assurance Society, 118 Duckworth Street.—*See Advertisement.*

HARBOR GRACE.

CLIFT, ALEXANDER, General Commission Agent and Auctioneer, 75 Water Street.—*See Advertisement.*

Drysdale, Andrew, Commission Agent and Notary Public, 141 Water Street.

Devereux, Patrick, General Dealer and Auctioneer, 171 Water Street.

Donnelly, W. J. S., General Merchant, 181 Water Street.

Green, Daniel, Merchant, 137 Water Street.

Fitzgerald, John, Agent for Mutual Marine Insurance Club of Conception Bay, Harvey Street.

Godden, Joseph, Watch and Clock Maker, 163 Water Street, West corner of Public Wharf.

HIPPISLEY, JAMES, General Draper, Importer of British and Foreign Manufactured Goods, &c., 165 Water Street, and 2 Public Wharf.—*See Advertisement.*

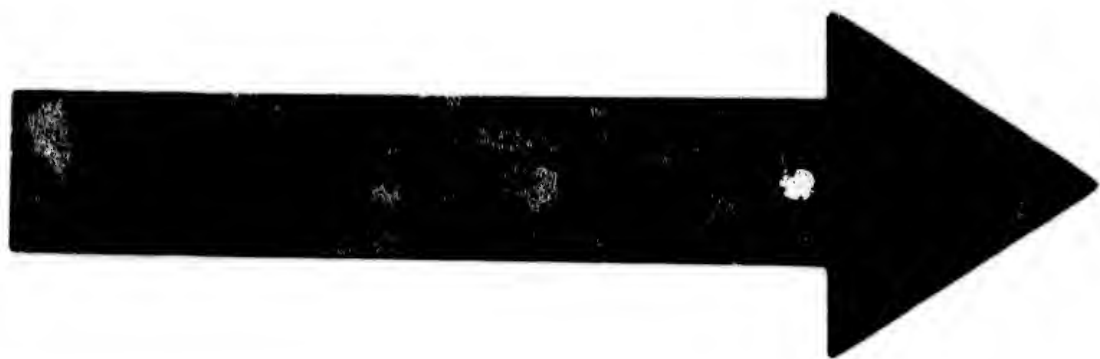
JILLARD BROTHERS, General Importers of British and Foreign Dry Goods, &c., &c., 159 Water Street East corner of Public Wharf.—*See Advertisement.*

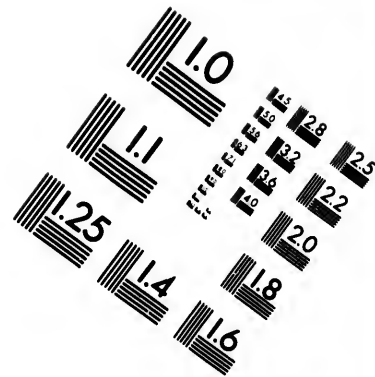
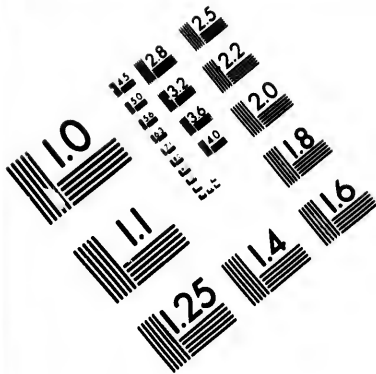
Neyle and Gordon, General Importers, 19 and 20 Water Street.

PUNTON & MUNN, Merchants and General Agents, Water Street.—*See Advertisement.*

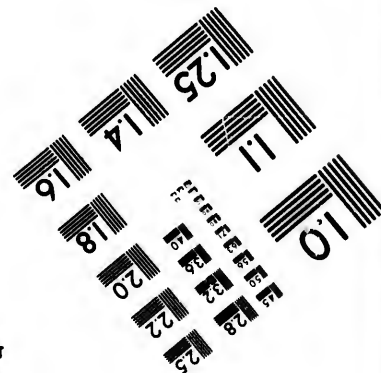
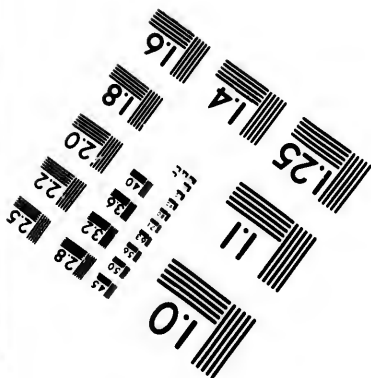
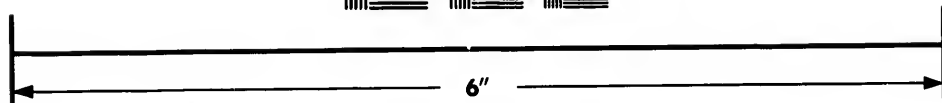
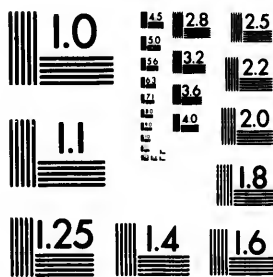
PATTERSON & FOSTER, General Importers and Commission Agents, Water Street.—*See Advertisement.*

Prendergast, James L., Commission Merchant and Auctioneer, Water Street near Victoria.





**IMAGE EVALUATION
TEST TARGET (MT-3)**



**Photographic
Sciences
Corporation**

23 WEST MAIN STREET
WEBSTER, N.Y. 14580
(716) 872-4503



Ridley & Sons, General Merchants, Harbor Grace Beach.

ROSS, C. W. & CO., General Importers and Commission Agents, 115 Water Street.—*See Advertisement.*

RUTHERFORD BROTHERS, General Merchants and Commission Agents, 129 Water Street.—*See Advertisement.*

TRAPNELL, H. W., Lumber Merchant, Commission Agent and General Dealer, Water Street, near Victoria Street.—*See Advertisement.*

TRAPNELL, HENRY, Importer of [China, Glass, Earthenware &c., 110 Water Street.—*See Advertisement.*

CARBONEAR.

Apsey & Co., General Merchants and Commission Agents, Water Street.

Bolger, Michael, General Dealer, Water Street.

Forward, Ambrose, Merchant.

Furlong, Thomas, Dealer in Dry Goods, &c., Water Street.

Fogwill, S. & H., General Dealers, Water Street.

Gould, B. T. H., Commission Agents, Importer and Dealer in British and American Goods, Water Street.

Joyce & Brothers, Dealers in Provisions, &c., Water Street.

M'Carthy, Richard, Commission Agent and General Dealer, Water Street.

Maddock, J. & R., Commission Merchants and General Importers Water Street.

M'Neil, Israel J., Merchant, Water Street.

Nichole, Nicholas, Auctioneer and Commission Merchant, Water Street.

Pike, Stephen B, General Dealer, Water Street.

Rorke, John, Merchant, Water Street.

Tuffin, Richard, Dealer in Dry Goods, &c., Water Street.

STAR Life Assurance Society.

48 Moorgate Street, London, E. C.

FOUNDED, A.D. 1843.

TRUSTEES:—

FREDERICK MILDRED, Esq. | WM. SKINNER, Esq.
GEORGE SMITH, Esq., L.L.D.

DIRECTORS:—

Chairman—William M'Arthur, Esq., Sheriff-Elect of London and Middlesex.

Deputy-Chairman—John Churchill, Esq.

Thomas Bell, Esq.	William Merry, Esq.
A. Bealey, Esq. M.A.	Wm. Mewburn, Esq.
Walter Griffith, Esq.	J. S. Pidgeon, Esq.
Thomas Holmes, Esq.	Joseph Thackray, Esq.
John J. Lidgett, Esq.	Geo. F. Ulling, Esq.
Sir Francis Lycett, Knt., Sheriff of London and Middlesex.	John Vanner, Esq.
	Joseph M. Ware, Esq.

NINE-TENTHS, OR NINETY PER CENT, of the Profits, ascertained every five years, are divided amongst Policy-holders having paid three Annual Premiums; and Policy-holders to the amount of £500 and upwards are entitled to attend and vote at the Annual General Meetings. The Assured, by this arrangement, are made acquainted with the Management, State, and Prospects of the Society every year.

BONUSES.—Four distinct calculations have been made with a view of appropriating the surplus sum or profit arising from the operations of the Society; at the last, made at the beginning of the year 1864, the Actuary reported that, after putting by £302,814 3s. 4d. as a reserve for future contingencies, there was £122,456 11s. 4d. available for division.

ANNUAL REVENUE, &c.—There is now assured a sum of Four Millions, represented by 12,000 Policies; and the annual revenue exceeds £155,000.

ASSETS.—The Assured have the security not only of the Capital Stock, but of a large invested sum, amounting to Three Quarters of a Million, which, with the well-known character of the Directors of the Society, is a substantial guarantee that all claims will be met with readiness and punctuality.

JESSE HOBSON, *Secretary*.

Newfoundland Agency.

Medical Referee—W. C. SIMMS, Esq., M.D.

JOSEPH WOODS, *Agent for Newfoundland.*

