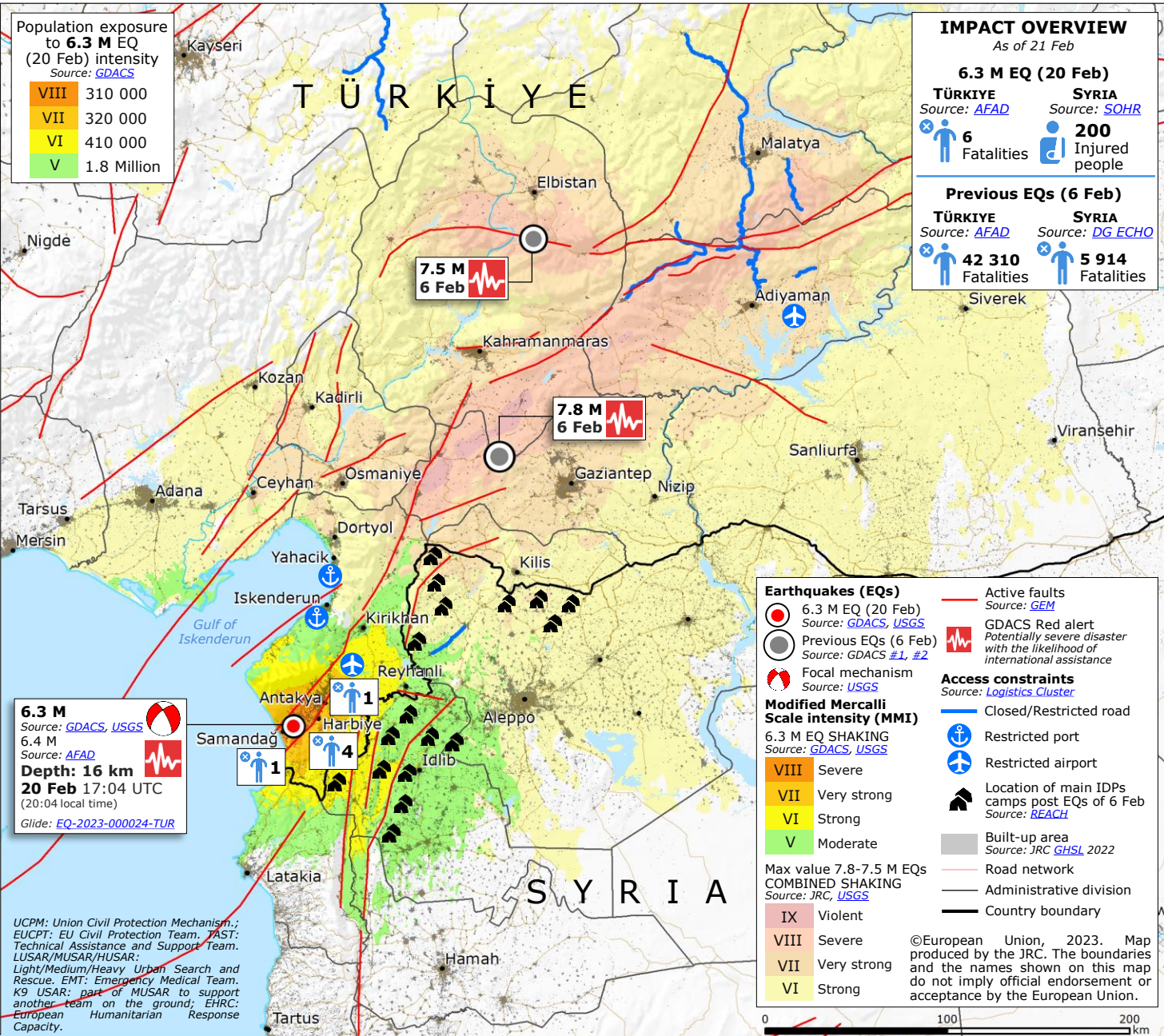
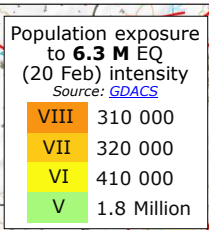
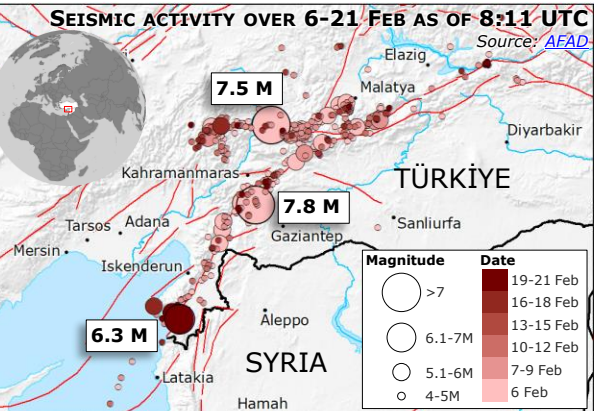


# Türkiye, Syria | Seismic Activity



**IMPACT OVERVIEW**  
As of 21 Feb

**6.3 M EQ (20 Feb)**

TÜRKİYE	SYRIA
Source: AFAD	Source: SOHR
6 Fatalities	200 Injured people

**Previous EQs (6 Feb)**

TÜRKİYE	SYRIA
Source: AFAD	Source: DG ECHO
42 310 Fatalities	5 914 Fatalities

**EU Response**  
as of 20 Feb at 17:00 UTC

**TÜRKİYE**

€ 5.7 million funding

**Response teams offered**

6 (4 ECPP) HUSAR	22 (5 ECPP) MUSAR	1 LUSAR	1 Medical Team
1 EMT 1	4 (3 ECPP) EMT 2	1 EUCPT	2 ERCC Liaison officers
11 experts			

**In-kind assistance**

12 experts	14 170 012 Medical/WASH	62 369 Food items	314 820 Shelter / NFI	2 293 Energy supply
1 Transport aircraft for 14 days	87 Other items			

Copernicus EMS Rapid Mapping activation EMSR648: 64 damage assessment maps produced

**SYRIA**

€ 10 million funding

**In-kind assistance**

19 718 946 Medical / WASH	39 340 Food items	45 973 Shelter/NFI	370 Energy supply
1 ERCC Liaison officer (Based in Beirut)	2 cargo flights	1 EUCPT	2 experts (Based in Beirut)

Copernicus EMS Rapid Mapping activation

**Earthquakes (EQs)**

- 6.3 M EQ (20 Feb) Source: GDACS, USGS
- Previous EQs (6 Feb) Source: GDACS #1, #2
- Focal mechanism Source: USGS

**Modified Mercalli Scale intensity (MMI)**

6.3 M EQ SHAKING Source: GDACS, USGS

VIII	Severe
VII	Very strong
VI	Strong
V	Moderate

Max value 7.8-7.5 M EQs COMBINED SHAKING Source: JRC, USGS

IX	Violent
VIII	Severe
VII	Very strong
VI	Strong

**Legend:**

- Active faults Source: GEM
- GDACS Red alert Potentially severe disaster with the likelihood of international assistance
- Access constraints Source: Logistics Cluster
- Closed/Restricted road
- Restricted port
- Restricted airport
- Location of main IDPs camps post EQs of 6 Feb Source: REACH
- Built-up area Source: JRC GHSL 2022
- Road network
- Administrative division
- Country boundary

©European Union, 2023. Map produced by the JRC. The boundaries and the names shown on this map do not imply official endorsement or acceptance by the European Union.

**6.3 M**  
Source: GDACS, USGS

**6.4 M**  
Source: AFAD

**Depth: 16 km**  
**20 Feb 17:04 UTC**  
(20:04 local time)

Glide: EQ-2023-000024-TUR

UCPM: Union Civil Protection Mechanism.; EUCPT: EU Civil Protection Team. TAST: Technical Assistance and Support Team. LUSAR/MUSAR/HUSAR: Light/Medium/Heavy Urban Search and Rescue. EMT: Emergency Medical Team. K9 USAR: part of MUSAR to support another team on the ground; EHRCC: European Humanitarian Response Capacity.