

LA 262
.B8 A2
1915
Copy 1

EDUCATIONAL SURVEY
OF
BULLOCH COUNTY
GEORGIA

By
M. L. DUGGAN, Rural School Agent

Number 4



Under the Direction of the
DEPARTMENT OF EDUCATION

M. L. BRITAIN
State Superintendent of Schools

1915
Monograph

525-1311

EDUCATIONAL SURVEY
OF
BULLOCH COUNTY
GEORGIA

By
M. L. DUGGAN, Rural School Agent

Number 4



Under the Direction of the
DEPARTMENT OF EDUCATION

M. L. BRITTAIN
State Superintendent of Schools
1915

L. B. ...
S. S. ...
1915

COUNTY SCHOOL ORGANIZATION

Bulloch County, Georgia



County Superintendent of Schools.

Hon. B. R. OlliffStatesboro, Ga.

Canning Clubs' Demonstration Agent.

Miss Polly Ann WoodStatesboro, Ga.

County Board of Education.

Hon. D. B. Franklin, President.....Statesboro, Ga.

Hon. F. M. HendrixPortal, Ga.

Hon. A. M. DealStatesboro, Ga.

Hon. Paul B. LewisBrooklet, Ga.

Hon. J. G. NevilleRegister, Ga.

D. of D.
UNIVERSITY
1915

PREFACE

The appreciation of and co-operation with the work of surveying the rural schools has nowhere been heartier and more cordial than in Bulloch County, and nowhere has there been manifested a readier determination to take advantage of it and build upon it. The enthusiastic and ready help extended by the county superintendent and board of education made possible and pleasant a work which would have otherwise been extremely difficult. The time seemed to be opportune, for the irresistible enthusiasm prevailing throughout the county for better schools needed the intelligent direction that comes from a more accurate and fuller knowledge of existing conditions, lest the cause should suffer from a "zeal not according to knowledge."

Unexpected and gratifying results of the survey came in many instances along with it, sometimes even anticipating it, and there are strong indications that others will surely follow. Indeed, many of our reports of conditions had to be modified before leaving the county on account of having been immediately improved, and before this report can be put into print it will do injustice to others on account of still further improved conditions. The rapid development of the schools of so large a county calls loudly for more and better professional supervision and direction than it is possible for any one man to give, however well qualified or industrious he is.

A FEW OF THE MOST PRESSING NEEDS OF THE BULLOCH COUNTY PUBLIC SCHOOL SYSTEM.

1. County-wide "local taxation" for the business-like support and direction of the schools.

2. A supervisor to assist the superintendent in a closer supervision of the schools. Also, more office room for a permanent display of school work.

3. A better planning of school houses for school purposes. Also, better equipments.

4. Better sanitation. Particularly with reference to the drinking water and the school toilets.

5. Consolidation at some points. One-teacher schools can never reach the highest efficiency. The children deserve the best.

THE AIM.

TO MAKE EVERY SCHOOL IN BULLOCH COUNTY AS GOOD AS THE
BEST SCHOOL IN BULLOCH COUNTY.

AS IS THE SCHOOL SO WILL BE THE COUNTY

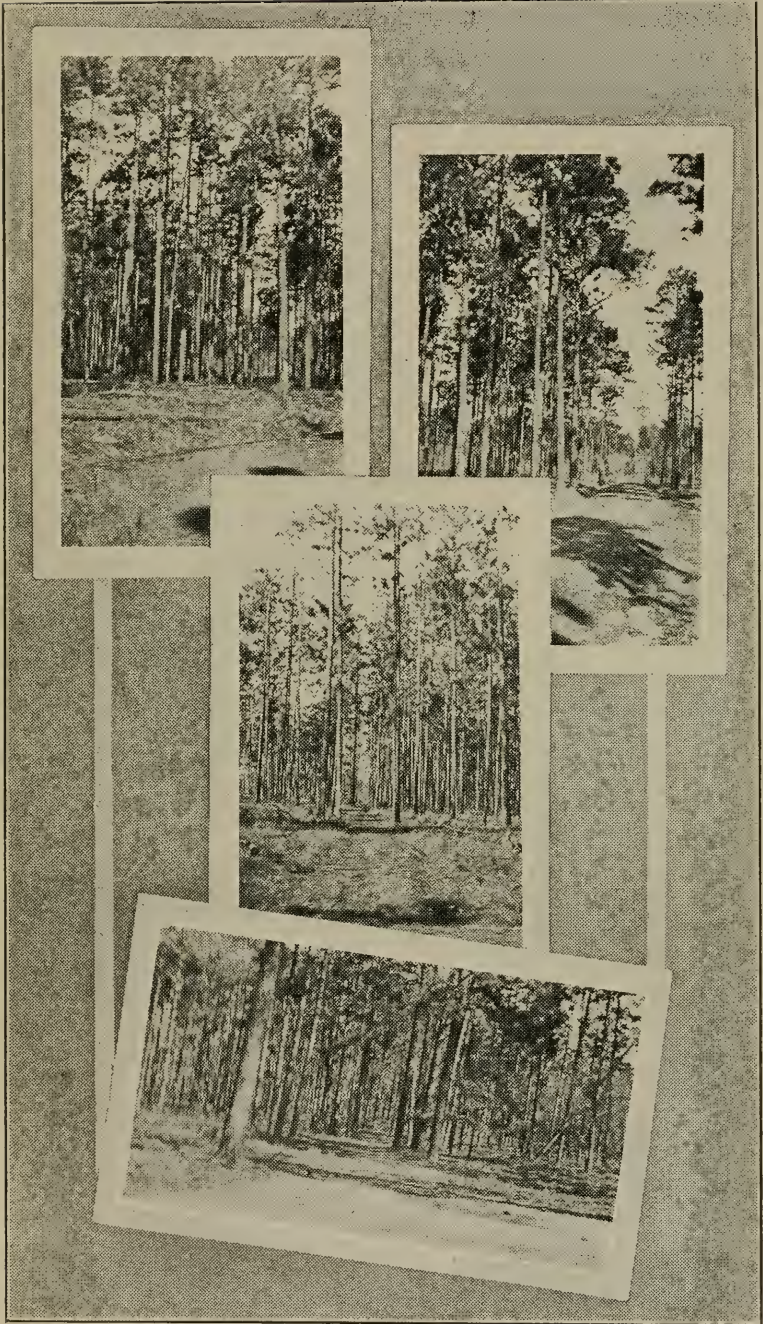
(P. P. Claxton, United States Commissioner of Education.)

“The schoolhouse is the temple which we erect to the god of childhood. The schoolroom is the home of the child during the most important hours of the most important years of its life. The schoolroom, the schoolhouse and the school grounds constitute the best index to the degree of civilization and to the ideals of the community.

Everything about the school should be beautiful, clean and wholesome. The sanitation should be perfect. The place where children go to prepare for life and gain strength for its duties should not be a hotbed for the germs of disease and death. That the time in school may be used to best advantage, the child should be under the most favorable conditions. No one does his best work otherwise.

Since ideals formed in childhood from its environment and the daily associations go with us through life, the cleanliness and beauty of schoolhouses and grounds are more powerful than all other agencies in determining the cleanliness and beauty of private homes and public buildings in the community where the children live as grownup men and women. The repulsive impressions of ugliness, dirt and disease accumulating from day to day drive children from school. The attractiveness of beauty, cleanliness, sweetness and comfort increasing from day to day is more powerful in bringing the child and all its interests to school, and keeping it there, than any attendance laws can ever be.

As are the school and the schoolhouse, so will be the home, the city, the State and the nation. For every community the motto should be: “For our schools—health, comfort and beauty.”



TYPICAL WINTER SCENES OF BULLOCH COUNTY

BULLOCH COUNTY.

Bulloch has well earned the reputation of being one of the largest, richest, most progressive and most resourceful of the southeast Georgia counties. Until the recent cuts from its territory for the formation of three new counties, it was one of the largest in the State, and still covers a very large and rich territory. It has for some years stood in the foremost rank of Georgia counties in the matter of progressive agriculture, yet only about one-third of its land is under cultivation. There still stands untouched large tracts of original south Georgia yellow pine that will ere long be a memory of the past in the State. If every acre of arable land was under cultivation, and all as intelligently tilled as the best now are, Bulloch County could feed the State. However, it would be unfortunate, indeed, if its material resources should be rapidly developed at the expense or neglect of the educational.

“One dollar in the pockets of an educated man is worth more to him than a thousand in the pockets of an ignorant man is worth to him. Ignorance multiplied by a million dollars does not come to as much as intelligence multiplied by thirty cents.”

“The common schools should have the right of way over all other institutions that stand for the public good.”

“Every dollar that the taxpayer takes out of his pockets for the support of the common schools today will put back many dollars into the pockets of his children tomorrow.”

Bulloch County has built many miles of fine public roads, over which I traveled to inspect the ninety-three public schools of the county.

Notwithstanding these good roads, and with the constant use of Superintendent Olliff's automobile, it required seven full weeks' work to complete a hurried personal inspection of each one of these schools. Very little help or supervision was attempted for the limited time and the large number of schools hardly allowed more than a hurried inspection. This experience was convincing proof that no one man, however industrious, could satisfactorily superintend and effectively supervise so large a system of rural schools. Such close and efficient supervision as the needs of Bulloch County schools indicate,

or the teachers and children of Bulloch County deserve, would require at least one supervisor working constantly with and under the direction of the superintendent. And, next to a more liberal and business-like plan of maintenance, this is now probably the most immediate need of the county school system. To limit his work for the schools of the county to the "letter of the law," and merely "visit each school at least once in every sixty days," would occupy all of one man's time. But the interests of the cause and the spirit of the law demand far more than this.

"Rural school systems, especially, need skillful supervision, for here the educational problems of the day are the most difficult, the teachers generally the youngest, both in years and experience, and have the least training for their work. The rural teachers, therefore, need and have a right to the help that comes from the sympathetic oversight of a competent supervisor."

Definite recommendations touching this important matter appear elsewhere herein.

SCHOOL HOUSES AND GROUNDS.

There are good titles to nearly all of the school lots in the county, and generally they are vested in the county board of education. Furthermore, the areas are above the average, generally from two to four acres. They have not generally, as yet, been improved for educational purposes. There are some notable exceptions where the grounds are being beautified and school gardens planned. Very few have given much attention to play grounds, and none to providing play appliances and apparatus.

"A school without a play ground is an educational deformity and a gross injustice to childhood."

Very many good and some expensive school houses have been built, generally by the patrons, aided by appropriations from the board of education. With few exceptions, however, these have not been well planned. Some of the best ones are fine auditoriums, but unsuited for class rooms, neither properly shaped nor sufficiently lighted. This is generally the case in every county in proportion as the units of administration are

increased. It is evidence of commendable zeal and a lamentable lack of knowledge as to school architecture. So in the painting of school houses in this and most counties it is noticeable that due consideration is not generally given to a harmony of colors or their scientific selection with reference to proper lighting of the buildings. There is, however, a decided tendency towards improvement in these matters in the more recent buildings. All are heated by small wood stoves, and no jacketed stove was found anywhere.

(A good bulletin on school architecture can be had from the State Department of Education.)

EQUIPMENT.

In Bulloch County, as elsewhere over the State, there is a lamentable lack of adequate school equipment, and this is a serious hindrance. (See detailed inventories of school equipment at each school as herein given.) Such equipment and teachers' helps as are provided for the most progressive and successful up-to-date schools would greatly facilitate the education of the children and enhance the work of the teachers. Money wisely spent on equipment in any business always proves profitable and makes for true economy.

SANITATION.

Always the health of the children should be the first and foremost concern. The most serious matters of sanitation that demand attention are the drinking water and the school toilets. Practically all of the schools of the county are provided with shallow wells or pumps on the school lots, varying in depth from 20 to 30 feet, but the water standing quite near the top during the wet seasons. At best this is a difficult problem in south Georgia, but nevertheless a serious one. Some of these wells were found in bad, and a few in filthy, condition. Responsible parties should be charged with the duty of constantly looking after them, and at least keeping them cleaned out. Where the lives of the children are involved, it would be well to have the water examined and its purity certified by the State Board of Health.

The absence of toilets for teachers and children is always



POOR SCHOOL CLOSET.

inexcusable, and hardly less so when *only one* is provided. To provide them and neglect to care for them is nearly as bad. No disinfectants are used at any of the schools. Unless more attention is given this matter by the rural schools the work of the hookworm commission in Georgia will soon have to be done over again. Both health and decency demand more attention to this matter.

CONSOLIDATION.

While one of the most important subjects connected with county school administration, this is one of the most difficult. Since it is almost impossible for a one-teacher school with all the common-school grades to be an efficient school, the matter of consolidation deserves serious consideration. There are a

few places in Bulloch County where the consolidation of several schools could be effected without inconvenience and to the very great advantage of all concerned. It would only require the surrendering of a few prejudices, but the greater interests of the children demand it. This is notably true in the neighborhood of the schools at Clito, Ivanhoe, and, perhaps, others.

COURSE OF STUDY.

No school does its best work for the community when its efforts are limited to the prescribed academic course of study. If the efficiency of any school is to be "measured by its reaction upon the interests and activities of the community," then its course of study should be vitalized by these community activities, such as literary clubs, civic-health clubs, debating clubs, school gardens, corn and canning clubs, and the like. Some of the schools of the county are experiencing rich results from one or more of these life-activities introduced into the school life, but others are suffering from the lack of any vitalizing agencies. The corn and canning club work and the several debating clubs are doing excellent work.

SCHOLARSHIP.

Whatever else a school may stand for it is supposed to stand for scholarship. And yet a lack of thoroughness in the fundamentals of scholarship is probably the most noticeable characteristic of the rural schools in this and other counties surveyed. In the majority of schools we have found that the majority of the children of the fifth and sixth grades do not readily enumerate numbers of six figures; cannot add accurately and with reasonable rapidity; cannot read their history lessons understandingly or well; are very slow in finding a word in the dictionary, generally unable to determine its meaning clearly when found, and can rarely determine its pronunciation at all. These serious defects seem to be mainly the results of a lack of training on the part of primary teachers, but partly, perhaps, from irregular attendance. Satisfactory work cannot be done in the intermediate grades because good work has not been done in the primary grades. Children cannot "read to learn" when

they have not "learned to read." The common lack of thoroughness in the fundamentals of scholarship nearly forces one to the conclusion that most of our rural schools should concentrate their time and efforts on the first four grades. Certain it is that the emphasis of attention should be given to these.

The trouble comes largely from the dangerous heresy, too commonly practiced, that "Cousin Sallie's scholarship is good enough for her to teach the little children of the primary grades." Is it right or reasonable to spend so many times more on the finishing years than on the foundation years of a child's education?

We would urge the selection of trained teachers, but where *only* the principal is to be a trained teacher the first grade should be assigned to the principal. This is done in a few places and ought to be in many others.

FINANCIAL.

The county received from the State school fund for 1914, \$30,764.85. This amount is insufficient to maintain long terms or to hold the best teachers. However, it was supplemented by "local taxation" in four districts, by subscriptions in some and tuition in others, and sometimes by "box suppers" and other devices to make up deficiencies, and thereby either the salaries or the length of the terms, or both, were somewhat increased. None of these methods of financing the schools are either satisfactory or permanent, except the method of taxation. The matter of maintenance is fundamental to all other progress in our public school system.

These supplementary amounts are generally uncertain and hard of collection, except where based upon taxation.



ADA BELLE SCHOOL.

Nearest Schools: Union School, three miles northeast; Greiner, five miles southeast.

Teacher: Miss Clara Belle Lee, Ada Belle, Ga.

Trustees: J. V. Brinson, H. V. Franklin, A. J. Bowen.

Organization: School year, six months; one teacher; seven grades; thirty-six pupils; no program posted; no industrial work or clubs.

Grounds: Title, as yet in a corporation in litigation; area,—; condition being improved a little; two closets, average condition.

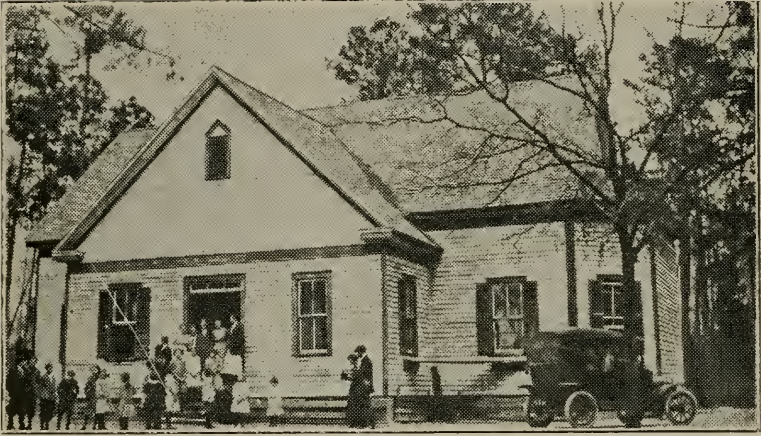
Building: Value, \$800.00; one room with veranda; no cloak rooms; good repair; ceiled; unpainted; well lighted and ventilated; fairly well kept.

Equipment: Good home-made desks; medium blackboards; one U. S. history map; one small organ; no globes, charts, library or other helps.

Water: Well on lot; common dippers.

Community Uses and Help: Used for occasional preaching and Sunday-school services; no organized help.

Maintenance: Two hundred and forty dollars from county funds; \$60.00 from local sources (tuition).



ARCOLA SCHOOL.

Nearest Schools: Stilson, four miles south; Knight, six miles northeast.

Teacher: Miss Hassie Davis. P. O., Arcola, Ga.

Trustees: B. C. McElveen, E. S. Hallman, S. D. Alderman.

Organization: School year, five months; one teacher; eight grades; forty-five pupils; program posted; no industrial work attempted; no clubs (probably organizing).

Grounds: Titles in local trustees; area,—; condition unimproved, but well kept; no gardens; one closet, average condition.

Building: Value, \$1,000.00; two class rooms; cloak rooms; fairly well planned, except for lighting; poorly lighted; well ventilated; ceiled; painted outside only; well kept.

Equipment: Good home-made desks, and a teacher's desk; forty-foot blackboards; no maps; no globes; no charts; no framed pictures; no library or other helps.

Water: Pump on lot; common dippers.

Community Uses and Help: Rarely used by community; no organized help.

Maintenance: \$240.00 from county fund; \$120.00 from local sources (tuition).



ATWOOD SCHOOL.

Nearest Schools: Ada Belle, five miles south; Register, five miles northeast.

Teacher: Miss Elena Rushing, P. O., Statesboro, Ga., R. 5.

Trustees: Julian A. Parrish, John A. Jones, Henry Holland.

Organization: School year, five months; one teacher; seven grades; thirty-five pupils; program posted; twenty-three recitation periods; small school garden, well cared for; no club work or extension work; pupils read understandingly and with animation.

Grounds: Titles, Board of Education; area, two acres; yard fenced; small school garden of flowers and vegetables, cultivated by grades; two closets in good condition.

Building: Value, \$850.00; one room, 24 x 36 x 12, and veranda; no cloak rooms; well lighted (two useless windows on stage); well ventilated; ceiled, but unpainted; well kept.

Equipment: Double patent desks; blackboard very poor; no maps (except soil survey of Bulloch County, not used); no charts, globes, framed pictures, library, or other school helps.

Water: Well on lot; supplied from common dippers.

Community Uses and Help: None.

Maintenance: \$175.00 from county school funds; \$75.00 from local sources (tuition).

ALEXANDER SCHOOL.

Nearest School: Bradwell, three miles west.

Teacher: Miss Maggie Whaley, Blitch, Ga.

Trustees: J. C. Crumley, J. C. White, Walter Akins.

Organization: School year, six months; one teacher; seven grades; thirty-four pupils; program posted; forty recitation periods; no school gardens; canning clubs.

Grounds: Titles, Board of Education; area, three acres; yards well cleaned up; one closet, average condition.

Building: Value, \$500.00; one room, 20 x 30 x 10, and small veranda; no cloak rooms; well lighted; ceiled, but unpainted; well kept.

Equipment: Home-made desks; sixteen-foot blackboard; no maps, charts, globes, or library. Several well-selected framed pictures on walls.

Water: Well on lot; common dippers.

Community Uses and Help: None.

Maintenance: \$240.00 from county school funds; \$120.00 from local sources (local tax).



AARON SCHOOL.

Nearest Schools: Rock Hill, four miles north; Portal, five miles southeast.

Teachers: W. T. Womack; Miss Orian Brown, Ass't., Aaron, Ga.

Trustees: J. R. Gray, J. B. Fields, W. E. Mills, C. B. Aaron, L. R. Lanier.

Organization: School year, six months; two teachers; ten grades; 120 pupils; no program posted; no school gardens; boys' corn club and girls' canning club.

Grounds: Titles, local trustees; area, one-half acre; grounds badly neglected; one closet.

Building: Value, \$2,000.00; three rooms, each 36 x 36 x 11 feet; well lighted; ceiled, but unpainted; not very well kept.

Equipment: Single patent desks; blackboards in very bad condition; no maps, charts, globes, libraries, or other helps.

Water: Well on lot unfit for use. Using well on a nearby lot; common dippers.

Community Uses and Help: None.

Maintenance: \$510.00 from county school funds; \$360.00 from local sources (tuition).



BRANNEN INSTITUTE.

Nearest School: Brooklet, four and one-half miles north.

Teachers: B. H. Ramsey; Miss Katie Howell, Ass't., Brooklet, Georgia.

Trustees: T. H. Waters, W. H. Howell, G. W. Wilson.

Organization: School year, six months; two teachers; seven grades; sixty-three pupils; no program posted; some attention given to small garden; no clubs.

Grounds: Titles, Board of Education; area, two acres; well fenced and well-kept yards; two closets, fair condition.

Building: Value, \$1,300.00; two rooms; fairly well lighted; ceiled, but unpainted inside; painted outside; fairly well kept.

Equipment: Home-made desks; fairly good blackboards; one small map of Ga.; seventy-five volumes library; no globes, charts, framed pictures, or other helps.

Water: Well on lot; use common dippers.

Community Uses and Helps: None.

Maintenance: \$420.00 from county funds; \$240.00 from local sources (tuition).



BROOKLET HIGH SCHOOL.

Nearest School: Brannen Institute, four and one-half miles south.

Teachers: W. D. Mathis, Principal; Miss Lorene Mann; Miss Aquilla Mann; Miss Lula Warnock; Miss Rubie Pledger; Mrs. Felix Parrish.

Trustees: D. L. Alderman, J. N. Wilson, T. C. Waters, Dr. John I. Lane.

Organization: School year, nine months; six teachers; ten grades; 200 pupils; well-graded school; drawing in first four grades; no industrial or club work.

Grounds: Titles, local trustees; area, nine acres; grounds not yet utilized, except as ordinary play grounds; fairly well kept; two closets.

Building: Value, \$9,000.00; brick; six class rooms and auditorium; well planned for light, ventilation, use, etc.; some rooms well kept.

Equipment: Good patent desks; good blackboards; one or two good pictures; no maps; no globes, charts, library, laboratory, or other helps.

Water: Well on lot; individual drinking cups.

Community Uses and Helps: Auditorium occasionally used for lyceums, etc.; no organized help from the community.

Maintenance: \$1,350.00 from county funds; \$1,350.00 from district tax; \$225.00 from incidental fees.



BRANNEN-GROOVER SCHOOL.

Nearest Schools: Statesboro, three and one-half miles west; Sand Hill Ford School, four miles east.

Teachers: Mrs. A. R. Lee; Miss Lessie Mikell, Ass't., P. O., Statesboro, Ga.

Trustees: W. A. Groover, G. L. Mikell, R. T. Olliff, T. C. Waters, J. S. Fail.

Organization: School year, five months; two teachers; seven grades; sixty-two pupils; posted program; fifteen recitations; girls' canning club, industrial work, etc.

Grounds: Titles, Board of Education; area, two acres; beautiful original pine forest, unimproved; no gardens; one closet.

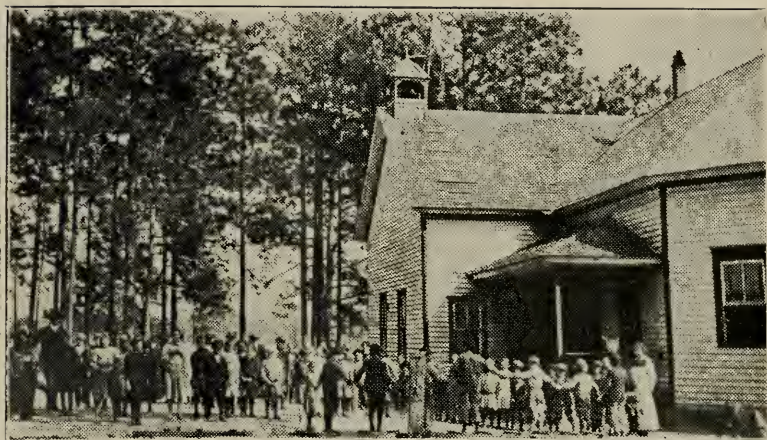
Building: Value, \$500.00; one room, 20 x 34 x 10; ceiled; unpainted; poorly lighted; two teachers in one room, but planning to build; condition, good.

Equipment: Home-made desks; very poor blackboards; one U. S. history map; no globes, charts, library, framed pictures, or other helps; small flags.

Water: Well on lot; common dippers.

Community Uses and Help: None.

Maintenance: \$375.00 from county funds; \$75.00 from local sources (tuition).



BRADWELL SCHOOL.

Nearest School: Portal School two miles south.

Teachers: Miss Jessie Mikell; Miss A. A. Hughes, Ass't., P. O., Statesboro, Ga.

Trustees: J. M. Hendricks, Mallie Denmark, F. M. Hendricks, S. F. Saunders, T. O. Winn.

Organization: School year, six months; two teachers; eight grades; ninety-nine pupils; program posted; twenty recitation periods; drawing; literary and debating clubs; corn and canning clubs.

Grounds: Titles, local trustees; area, three acres; yard well fenced; no gardens; one closet, fair condition; well kept yard.

Building: Value, \$1,200.00; two rooms; cloak rooms; painted; fairly well lighted and ventilated; fairly well kept.

Equipment: Home-made desks; insufficient blackboards; no maps, charts, globes, library, or other helps.

Water: Well on lot.

Community Uses and Helps: Used for regular meetings of Parent-Teacher Association. Well organized, with good, active membership.

Maintenance: \$540.00 from county funds; \$240.00 from local sources (local tax).



BIRD SCHOOL.

Nearest Schools: Enterprise, three miles northwest; Tyson Grove, four miles southeast.

Teachers: Miss G. C. DeLoach; Miss Mamie Woodcock, Ass't., Statesboro, Ga.

Trustees: D. E. Bird, Remer Anderson, W. W. Bland, E. R. Collins, S. J. Riggs.

Organization: School year, six months; two teachers; seven grades; sixty-three pupils; program posted; twenty-five recitations; debating club, corn and canning clubs.

Grounds: Titles in Board of Education; area, three acres; yards well fenced and clean; no gardens; one closet, fair condition.

Building: Value, \$1,400.00; two rooms, well planned, good condition, well kept; well lighted; ceiled; unpainted.

Equipment: Single patent desks, three sizes; good blackboards; good set eight maps in case on rollers; two charts; one globe; forty volumes library; fine selection framed pictures.

Water: Well on lot; individual cups.

Community Uses and Help: Occasional church services; well organized Mothers' Club, active.

Maintenance: \$420.00 from county funds; \$300.00 from local sources (tuition).



BEAVER POND SCHOOL.

Nearest Schools: Clito, two and one-half miles northwest; Eureka, two miles north.

Teacher: S. F. Piercy, P. O., Statesboro, Ga.

Trustees: J. S. Stouse, C. F. Lindsay, I. T. Newsome.

Organization: School year, five months; one teacher; seven grades; forty-three pupils; no program posted; forty-five recitation periods; no clubs or industrial work.

Grounds: Titles in Boards of Education; area, three acres; unimproved; one closet, condition bad; no garden.

Building: Value, \$750.00; one room; no cloak rooms; well lighted; ceiled; unpainted; good condition; well kept.

Equipment: Single patent desks; sixteen-foot fair blackboard; one U. S. history map; no charts, globes, framed pictures, or other helps.

Water: Well on lot; common dippers.

Community Uses and Help: None.

Maintenance: \$200.00 from county funds; \$75.00 from local sources (tuition).



BRAGG SCHOOL.

Nearest School: Sand Hill Ford, three miles.

Teacher: Miss Emmie Williams, Statesboro, Ga., R. —.

Trustees: L. P. Moore, W. A. Waters, G. P. Grooms.

Organization: School year, six months; one teacher; six grades; thirty-five pupils; program posted; thirty recitations; drawing; gardening; canning clubs, etc.

Grounds: Titles in Board of Education; area, two acres; yards well fenced; flower and vegetable gardens; grounds improved and well kept; one closet, fair condition.

Building: Value, \$850.00; one room; two cloak rooms; well lighted; painted; good condition; well kept.

Equipment: Single patent desks; good blackboards; one map of Georgia, in bad condition; Perry pictures of birds, etc.; 150 volumes library; no charts or globes.

Water: Well on lot; drinking fountain.

Community Uses and Help: Used for club meetings, Epworth League, Sunday-school, etc.; a well organized, active Mothers' Club rendering valuable aid to school.

Maintenance: \$240.00 from county funds; \$120.00 from local sources (tuition).



CENTRAL SCHOOL.

Nearest Schools: Tyson's Grove, three miles northeast; Green Grove, four miles south.

Teachers: R. H. Tyson; I. L. Tyson, Ass't., P. O., Statesboro, Ga.

Trustees: Lem Brammen, L. O. Akins, J. M. D. Jones.

Organization: School year, six months; two teachers; seventy-five pupils; seven grades; no program posted; no clubs or industrial work; literary club.

Grounds: Titles in Board of Education; area, two acres; small yard, fenced; grounds unimproved; no gardens; two closets in very bad condition.

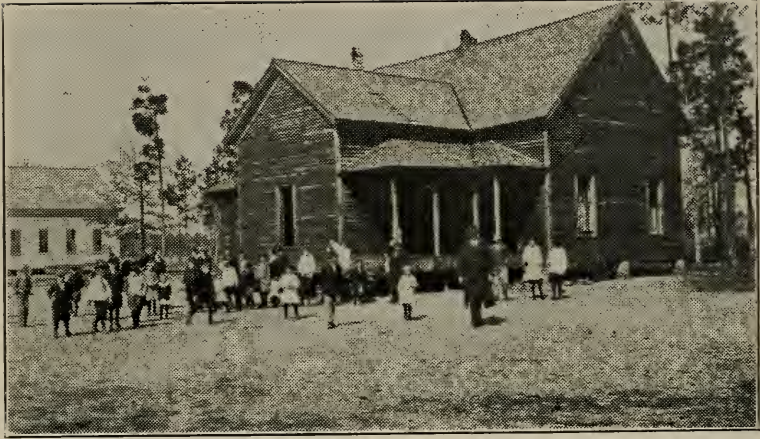
Building: Value, \$1,100.00; two rooms; no cloak rooms; painted; lighting and ventilation insufficient; poorly kept.

Equipment: Single patent desks; poor blackboards; one map; no charts, globes, framed pictures, library, or other helps.

Water: Well on lot; common dippers.

Community Uses and Help: None.

Maintenance: \$325.00 from county funds; \$125.00 from local sources (tuition).



CLITO SCHOOL.

Nearest Schools: Snapp School, three miles east; Eureka, one mile northeast; Beaver Pond two and one-half miles southeast.

Teacher: Miss Jewell Colclough, P. O., Clito, Ga.

Trustees: L. M. Etheredge, H. M. Sellers, J. G. Hart.

Organization: School year, six months; one teacher; six grades; fifty-five pupils; program posted; thirty-three recitations; canning clubs; no industrial work attempted.

Grounds: Titles, Board of Education; area three acres; grounds unimproved; one closet in average condition.

Building: Value, \$750.00; two rooms; ceiled; unpainted; improperly lighted; fair condition; well kept.

Equipment: Single patent desks; good blackboards; no charts, maps, globes, pictures, library, or other helps.

Water: Well on lot: common dippers.

Community Uses and Help: None.

Maintenance: \$240.00 from county funds; \$120.00 from local sources (tuition).



DONALDSON SCHOOL.

Nearest School: Mitchell School, four miles southeast.

Teachers: Miss Zuliene Lane; Mrs. Nora Clanton, Ass't., P. O., Brooklet, Ga.

Trustees: Jno. W. Donaldson, etc.

Organization: School year, five months; seven grades; sixty-seven pupils; two teachers; industrial club for sewing, etc.; canning club; some organized play.

Grounds: Titles in Board of Education; area, one acre; beginning to improve grounds; one closet.

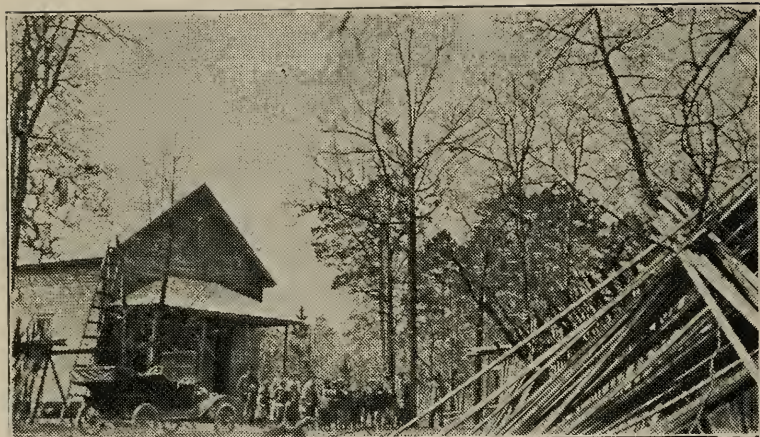
Building: Value, \$700.00; two rooms; no cloak rooms; ceiled; unpainted; lighting and ventilation very poor; condition fair; well kept.

Equipment: Home-made desks; poor blackboards; one U. S. history map; flags; organ; no charts, globes, library, or other helps.

Water: Well on lot; common dippers.

Community Uses and Help: None.

Maintenance: \$420.00 from county funds; \$150.00 from local sources (tuition).



DAUGHTRY SCHOOL.

Nearest Schools: Olliff Bay School, four miles southeast;
Rocky Ford, two miles east.

Teacher: Claud Harmon, P. O., Rocky Ford, Ga.

Trustees: Not yet elected.

Organization: School year, five months; one teacher; six grades; forty pupils; program posted; twenty-three recitations; canning clubs; no industrial work.

Grounds: Titles in Board of Education; area, three acres; grounds not yet improved; one closet.

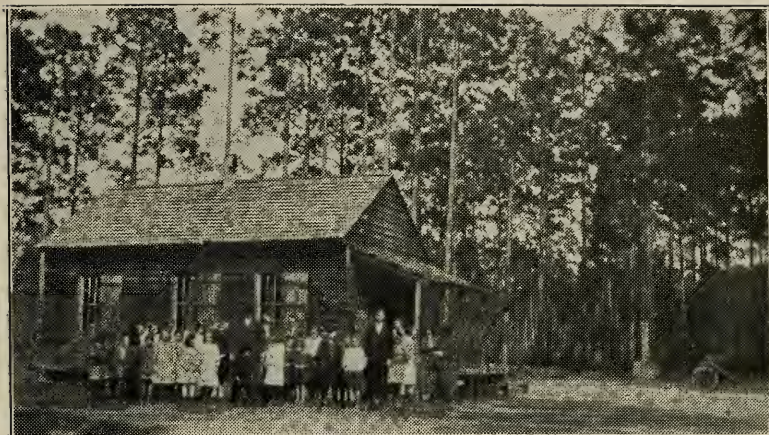
Building: Value, \$600.00; one room, 25 x 40 x 15; no cloak rooms; well ventilated; well lighted; unceiled, unpainted. (New building, unfinished.)

Equipment: Single patent desks; no blackboards; no maps; no charts; no globes; no pictures; no library, or other helps.

Water: Well on lot; common dippers.

Community Uses and Help: None as yet.

Maintenance: \$200.00 from county funds; \$75.00 from local sources (tuition).



ESLA SCHOOL.

Nearest School: Mitchell School, four miles southwest, two miles from line Bryan County.

Teachers: W. F. Wyatt; Miss Carrie Jones, Ass't., P. O., Pembroke, Ga.

Trustees:

Organization: School year, six months; two teachers; seven grades; sixty-four pupils; no program posted; no clubs or industrial work attempted.

Grounds: Uncertain; unimproved; one closet, average condition.

Building: Value, \$250.00; one room; no cloak rooms; unfinished; well kept.

Equipment: Very poor home-made desks; very poor blackboards; no maps, charts, globes, pictures, library, or other helps.

Water: Well in bad condition; common dippers.

Community Uses and Help: None.

Maintenance: \$390.00 from county fund; \$125.00 from local sources (tuition).



EUREKA SCHOOL.

Nearest School: Clito School, one mile west.

Teacher: Miss Annie Anderson, P. O., Statesboro, Ga.

Trustees: W. A. Jones, J. H. Brown, C. B. Miley.

Organization: School year, six months; six grades; forty-one pupils; one teacher; no program posted; about thirty recitations; no clubs or industrial work attempted.

Grounds: Titles in local trustees; area, one acre; entirely unimproved; one closet in average condition.

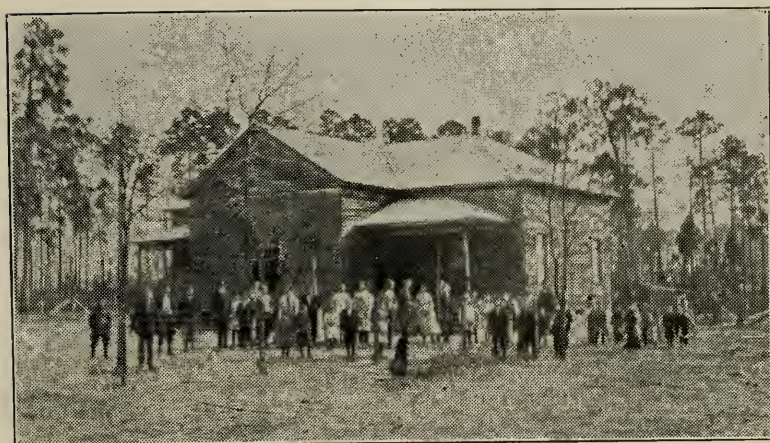
Building: Value, \$750.00; one room, and cloak rooms; partly ceiled; unpainted; sufficiently, but improperly lighted; not well kept.

Equipment: Home-made desks; a little good blackboard; no maps, charts, globes, pictures, library, or other helps.

Water: Nearby well; common dippers.

Community Uses and Help: None.

Maintenance: \$180 from county funds; not from local sources.



ENTERPRISE SCHOOL.

Nearest Schools: Bird School, three miles southeast; Portal, three miles northeast.

Teachers: Miss Selma McElveen; Miss Leta McElveen, Ass't., P. O., Statesboro, Ga.

Trustees: David Smith, E. V. Mincey, I. S. Fordham.

Organization: School year, six months; two teachers; seven grades; forty-nine pupils; program posted; thirty recitations; canning and corn clubs and debating club.

Grounds: Titles in Board of Education; area, two acres; well fenced; yard and other improvements started; no gardens; one closet in average condition.

Building: Value, \$1,000.00; one room, 30 x 60, divided by a curtain; cloak rooms; ceiled; unpainted; poorly lighted; fairly well kept.

Equipment: Single patent desks; good blackboards; one U. S. history map; one globe; Perry pictures; no library; one set Langworthy Food Charts; one soil survey map.

Water: Well on lot; common dippers.

Community Uses and Help: None.

Maintenance: \$270.00 from county funds; \$125.00 from local sources (tuition).



EWELL'S PARK SCHOOL.

Nearest School: Harville's School, three miles southeast.

Teachers: E. A. Johnson; Miss Naomi Harville, Ass't., P. O., Statesboro, Ga.

Trustees: M. M. Anderson, J. S. NeSmith, K. H. Harville, W. A. Waters, D. A. Brannen.

Organization: School year, five months; eight grades; two teachers; sixty-six pupils; corn and canning clubs; literary club, etc.; some industrial work on grounds.

Grounds: Titles in Board of Education; area, two acres; yards well fenced and planted in trees and flowers; small garden in flowers; two closets in fair condition.

Building: Value, \$1,600.00; two rooms and veranda; painted; well lighted and ventilated; well kept.

Equipment: Double home-made desks; forty feet good black-board; one map; one chart; small library; no globes, framed pictures, or other helps.

Water: Well on lot; individual drinking cups at well.

Community Uses and Help: None.

Maintenance: \$365.00 from county funds; \$125.00 from local sources (tuition).



EMMITT SCHOOL.

Nearest Schools: Pleasant Grove, three miles north; Ewell's Park, four miles south.

Teacher: Miss Leona Groover, P. O., Statesboro, Ga.

Trustees: J. J. Groover, J. R. W. B. Bland, J. D. Rimes.

Organization: School year, five months; eight grades; one teacher; thirty-six pupils; program posted; no clubs or industrial work.

Grounds: Titles in Board of Education; area, three acres; beautiful forest; no gardens; two closets, well built, average condition.

Building: Value, \$800.00; one room, 30 x 40, with veranda; no cloak rooms; ceiled; painted; good condition; well kept; poorly and improperly lighted.

Equipment: Double patent desks; good blackboards; one U. S. history map; one chart (bad condition); no globes, pictures, library, or other helps.

Water: Well on lot; common dippers at well.

Community Uses and Help: None.

Maintenance: \$210.00 from county funds.



GREEN GROVE SCHOOL.

Nearest School: Central School, three and one-half miles north.

Teacher: Miss Sallie Neville, P. O., Statesboro, Ga.

Trustees: Willie Brammen, Henry Akins.

Organization: School year, five months; one teacher; six grades; thirty-seven pupils; program posted; thirty-three recitations; no clubs or industrial work.

Grounds: Titles in local trustees; area, two acres; very little improvements on grounds attempted yet; one closet, in average condition.

Building: Value, \$250.00; one room, 20 x 30; no cloak room; well lighted; unceiled; unpainted; unfinished; well kept.

Equipment: Home-made desks; poor blackboards; no maps; no charts; no globes; no pictures; no library, or other helps.

Water: Well on lot; common dippers.

Community Uses and Help: None.

Maintenance: \$210.00 from county funds; \$120.00 from local sources (tuition).



HARVILLE SCHOOL.

Nearest Schools: Ewell's Park, four miles northwest; Martin, five miles southwest.

Teacher: Miss Daisy Everett, P. O., Brooklet, Ga.

Trustees: Not elected.

Organization: School year, six months; one teacher; seven grades; forty-one pupils; program posted; twenty-two recitations; no clubs or industrial work, except drawing (mostly map drawing).

Grounds: Titles in local trustees; area, one acre; yard fenced; well kept; one closet, average condition.

Building: Value, \$750.00; one room; veranda; no cloak rooms; lighting and ventilation good; ceiled; unpainted; well kept.

Equipment: Home-made desks; good blackboards; no maps; no charts, globes, or library; good selection unframed pictures.

Water: Well on lot; common dippers.

Community Uses and Help: None.

Maintenance: \$240.00 from county funds; \$90.00 from local sources (tuition).



HODGES SCHOOL.

Nearest School: Middleground, five miles north.

Teacher: J. J. Zitterower, P. O., Dover, Ga.

Trustees: J. E. Hodges, D. C. Hodges, John Coleman, A. H. Hodges, J. T. Robinson.

Organization: School year, six month; one teacher; seven grades; thirty-five pupils; no clubs or industrial work attempted.

Grounds: Titles, individual; area, —; unimproved; one closet, average condition.

Building: Value, \$150.00; one room, 20 x 30; no cloak rooms; fairly lighted; unceiled; unpainted; unfinished; well kept.

Equipment: Home-made desks; twenty feet good blackboard; no maps, charts, globes, pictures, or library; several cabinets illustrative material.

Water: Well on lot; common dippers.

Community Uses and Help: Regular Sunday-school and occasional church services.

Maintenance: \$240.00 from county funds; \$60.00 from local sources (local tax).



HENDRICKS SCHOOL.

Nearest Schools: Areola, four miles northwest; Holley Grove, four miles west.

Teacher: Miss Kate Wheeler, P. O., Stilson, Ga.

Trustees: W. L. Hendricks, H. F. Hendricks, T. A. Braswell.

Organization: School year, six months; seven grades; thirty-two pupils; one teacher; no clubs or industrial work.

Grounds: Titles in Board of Education; area, three acres; small garden planted in flowers; one closet in average condition.

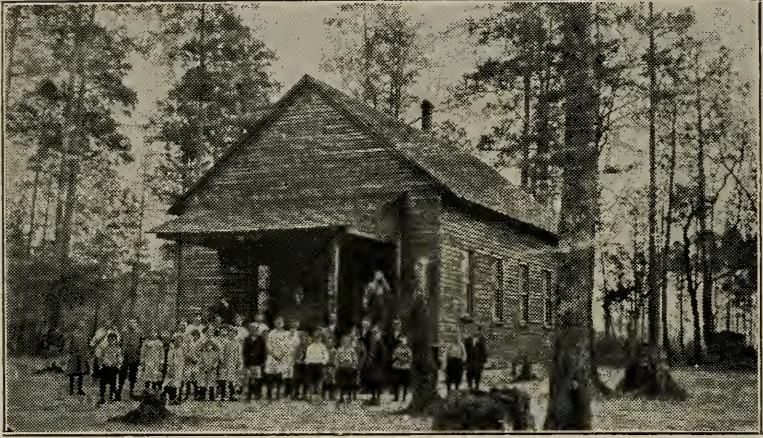
Building: Value, \$750.00; one room; veranda; no cloak rooms; well lighted; unceiled; unpainted; well kept.

Equipment: Single patent desks; thirty feet blackboards; one U. S. history map; no charts, globes, pictures, library, or other helps.

Water: Well with pump on veranda; individual drinking cups.

Community Uses and Help: None. (New school.)

Maintenance: \$240.00 from county funds; \$60.00 from local sources (tuition).



HOLLEY GROVE SCHOOL.

Nearest School: Hendricks School, four miles east.

Teacher: Miss Annie Ola Bryan, P. O., Brooklet, Ga.

Trustees: John Akins, J. L. Hagans, A. L. Cook, J. J. Groover.

Organization: School year, five months; one teacher; seven grades; forty-two pupils; no clubs or industrial work; program posted; thirty-five recitation periods.

Grounds: Titles in Board of Education; area, two acres; unimproved; one closet, average condition.

Building: Value, \$850.00; one room; veranda; no cloak rooms; well lighted; ceiled; unpainted; windows well curtained; well kept.

Equipment: Home-made desks; thirty feet blackboards; no maps; no charts; no library; no framed pictures; one small globe.

Water: Well on lot; common dippers.

Community Uses and Help: None.

Maintenance: \$200.00 from county funds; \$50.00 from local sources (tuition).



IVANHOE SCHOOL.

Nearest Schools: Olney, two miles; Hubert, two miles.
(Prospects for consolidation.)

Teacher: Miss Annie Cone, P. O., Ivanhoe, Ga.

Trustees:

Organization: School year, six months; one teacher; seven grades; thirty-seven pupils; corn and canning clubs.

Grounds: Titles, individual; area,—; unimproved; one closet, average condition.

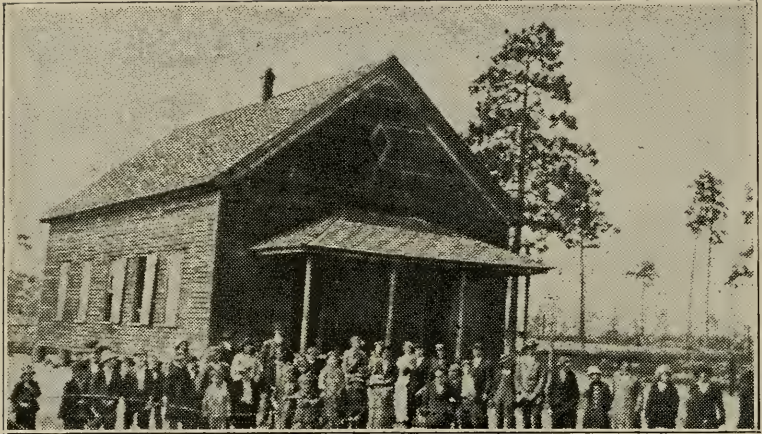
Building: Value, \$650.00; one room; no cloak rooms; well lighted; ceiled; unpainted; fairly well kept; (old building).

Equipment: A few home-made desks and benches; two maps; no charts or globes; some good pictures; magazines provided by teacher for use of pupils.

Water: Pump on lot; common dippers.

Community Uses and Help: None.

Maintenance: \$240.00 from county funds; \$120.00 from local sources (tuition).



INGLESIDE SCHOOL.

Nearest School: Olliff Bay, four miles east.

Teachers: J. L. Lee; Miss Mattie Burke, Ass't., P. O., Portal, Ga.

Trustees: B. R. Burke, R. D. Sills, J. W. Clarke, D. R. Sills, J. E. Saunders.

Organization: School year, 5 months; six grades; sixty-five pupils; two teachers; no program posted; canning club and literary clubs; no industrial work attempted.

Grounds: Titles in Board of Education; area, two acres; unimproved yard, fenced; one closet, average condition.

Building: Value, \$750.00; one room; veranda; no cloak rooms; ceiled; unpainted; poorly lighted; very badly kept.

Equipment: Partly single patent desks, partly long benches; very poor blackboards; no maps; no charts; no globes; no pictures; no library, or other helps.

Water: Well on lot; common dippers.

Community Uses and Help: None.

Maintenance: \$335.00 from county funds; \$90.00 from local sources (tuition).



JIMPS SCHOOL.

Nearest Schools: Sunny Side, four miles north; Register, five miles west.

Teacher: Muncie Koomer, P. O., Jimps, Ga.

Trustees: E. M. Bohler, R. D. Lanier, Brooks Wilson, H. T. Jones, H. N. Wilson.

Organization: School year, five months; eight grades; forty-one pupils; one teacher; program posted; forty-one recitations; no clubs.

Grounds: Titles in Board of Education; area, three acres; yards fenced, otherwise unimproved; one closet, average condition.

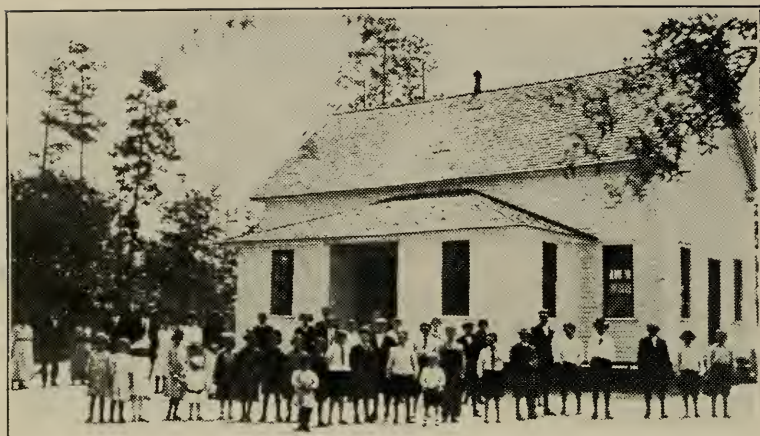
Building: Value, \$800.00; one room; veranda; no cloak rooms; ceiled; painted; well lighted; well kept.

Equipment: Double patent desks; fairly good blackboards; no maps; no charts; no globes; few pictures; small library.

Water: Well on lot; common dippers.

Community Uses and Help: None.

Maintenance: \$200.00 from county funds; \$125.00 from local sources (tuition).



KNIGHT SCHOOL.

Nearest School: Ogeechee, three miles north.

Teacher: C. D. Hollingsworth, P. O., Stilson, Ga.

Trustees: Howell Gigger, Hamp Futch, E. R. Grooms, J. B. Bennetts, N. W. Shumans, Eli Beasley.

Organization: School year, six months; one teacher; seven grades; forty-nine pupils; no program posted; no clubs or industrial work attempted.

Grounds: Titles in Board of Education; area, three acres; yards well improved and well fenced; one closet, average condition.

Building: Value, \$900.00; one room; two cloak rooms; sufficiently lighted; well kept; ceiled; painted.

Equipment: Single patent desks; twenty-five feet fair blackboard; no maps; no charts; no globes; no pictures; no library, or other helps.

Water: Well-cemented pump on lot; common dippers.

Community Uses and Help: None.

Maintenance: \$240.00 from county funds; \$125.00 from local sources (tuition).



MILL CREEK SCHOOL.

Nearest Schools: Middleground School, two and one-half miles north.

Teachers: C. M. Anderson; Miss Eula Brannen, Ass't., P. O., Statesboro, Ga.

Trustees: Thos. W. Woodcock, John W. Skinner, J. I. Dickerson, R. A. Chester.

Organization: School year, six months; two teachers; seven grades; seventy-four pupils; program posted; canning and corn club; no industrial work.

Grounds: Titles in Board of Education; area, four acres; unimproved; one closet in average condition.

Building: Value, \$1,200.00; three rooms; veranda; no cloak rooms; well lighted; ceiled; unpainted.

Equipment: Single and double patent and home-made desks; good blackboards; two maps; no charts, globes, framed pictures, library, or other helps.

Water: Well on lot; water bad; common dippers.

Community Uses and Help: None.

Maintenance: \$420.00 from county funds; \$210.00 from local sources (tuition).



MARTIN SCHOOL.

Nearest School: Spring Hill, three miles south.

Teacher: Miss Ruth Harville, P. O., Statesboro, Ga.

Trustees: J. B. Proctor, E. A. Proctor, M. L. Futch.

Organization: School year, five months; one teacher; six grades; forty-two pupils; no program posted; thirty-five recitations; debating clubs, flower clubs, corn and canning clubs.

Grounds: Titles in Board of Education; area, two acres; yards fenced; school gardens well laid off and planted; one closet, average condition.

Building: Value, \$1,200.00; one room, 30 x 70 x 10 feet; upper story used as Masonic Lodge; no cloak rooms; ceiled; unpainted; poorly lighted; well kept. (Building to be painted soon.)

Equipment: Home-made double desks; good blackboards; U. S. history map; no charts, globes, framed pictures, library or other helps.

Water: Well on lot, apparently neglected; common dippers.

Community Uses and Help: Used as Masonic Lodge; no organized community help.

Maintenance: \$200.00 from county funds; \$50.00 from local sources (tuition).



MITCHELL SCHOOL.

Nearest School: Esla School, four miles northeast, near Bryan County line.

Teacher: J. W. Grooms, P. O., Pembroke, Ga.

Trustees: R. D. Denmark, H. W. Burke, E. W. Parrish.

Organization: School year, six months; one teacher; six grades; thirty-five pupils; no program posted; corn and canning clubs; debating clubs—boys' and girls'.

Grounds: Titles in Board of Education; area, two acres (with use of three acres adjoining); new location and grounds not yet improved; no closets yet built.

Building: Value, \$900.00; one room; veranda; two cloak rooms; well and properly lighted; ceiled; unpainted; (well planned building as to use and architectural beauty).

Equipment: Single patent and double home-made desks; blackboards not yet in place; no maps, charts, framed pictures, globes, library, or other helps.

Water: Well on lot; common dippers.

Community Uses and Help: New school (not yet organized).

Maintenance: \$210.00 from county funds; \$120.00 from local sources (tuition).



MIDDLEGROUND SCHOOL.

Nearest School: Mill Creek School, three miles east.

Teachers: J. H. Metts; Miss Ora Franlin; Miss Nan Edith Outland, P. O., Statesboro, Ga.

Trustees: J. A. Metts, W. C. Akins, D. A. Temples, J. F. Cannon, A. L. Brannen.

Organization: School year, six months; three teachers; nine grades; ninety pupils; program posted; corn and canning clubs; no industrial work attempted.

Grounds: Titles in Board of Education; area, two acres; unimproved and neglected; one closet, **very bad** condition.

Building: Value, \$1,400.00; three rooms; two cloak rooms; ceiled; unpainted inside; painted outside; poorly lighted; poor ventilation; fairly well kept.

Equipment: Single patent and double home-made desks; poor blackboards; no maps; no charts; no framed pictures; no library; one set encyclopedias; no other helps.

Water: Well on lot; common dippers.

Community Uses and Help: Used for farmers' institutes and debates; no organized help.

Maintenance: \$720.00 from county funds; \$270.00 from local sources (local tax).



NEW CASTLE SCHOOL.

Nearest School: Sylvester School, four miles northwest.

Teachers: E. M. Dyal; Miss Laura Anderson, Ass't., P. O., Register, Ga.

Trustees: M. J. Rushing, J. H. Anderson, C. M. Anderson, W. W. Anderson, C. E. Anderson.

Organization: School year, five months; two teachers; eight grades; seventy pupils; no program posted; canning clubs; no industrial work attempted.

Grounds: Titles in Board of Education; area, two acres, neglected; one closet in average condition.

Building: Value, \$1,200.00; two rooms, 20 x 50, each; ceiled; unpainted; very poorly lighted; very badly kept; (badly planned).

Equipment: Home-made desks; fairly good blackboards; no maps, charts, globes, pictures, library, or other helps.

Water: Well on lot; common dippers.

Community Uses and Help: None.

Maintenance: \$425.00 from county funds; \$100.00 from local sources (tuition).



OGGEECHEE SCHOOL.

Nearest School: Knight School, three miles.

Teacher: C. H. Parrish, Stilson, Ga.

Trustees: J. L. Conner, F. F. Lee, A. H. Hill, J. G. Sumner, R. Ziegler.

Organization: School year, six months; one teacher; seven grades; forty-five pupils; no program posted; forty recitations; canning clubs; no industrial work.

Grounds: Titles in Board of Education; area, three acres; with a lake in rear these grounds are capable of very great beauty; no gardens; one closet in average condition.

Building: Value, \$850.00; one room; veranda; no cloak rooms; ceiled; unpainted; well lighted and ventilated; well kept.

Equipment: Single patent desks; good blackboards; no maps; no charts; no globes; no library; no other helps.

Water: Well on lot; common dippers at well.

Community Uses and Help: None.

Maintenance: \$240.00 from county funds; \$120.00 from local sources (tuition).



OLLIFF BAY SCHOOL.

Nearest School: Daughtry School, three miles.

Teacher: R. T. Turner, P. O., Rocky Ford, Ga.

Trustees: Jas. T. Hendricks, Ransom Hendricks, W. W. Beasley, Jas. L. Beasley, J. L. Long.

Organization: School year, six months; one teacher; eight grades; seventy-four pupils; no program posted; canning clubs; no industrial work attempted.

Grounds: Titles in Board of Education; area, two acres; yard fenced; grounds unimproved; one closet.

Building: Value, \$650.00; one room; veranda; no cloak rooms; ceiled; improperly lighted; unpainted; well kept.

Equipment: Home-made desks; very poor blackboards; no maps; no charts; no globes; no framed pictures; no library or other helps.

Water: Well on lot; common dippers.

Community Uses and Help: None.

Maintenance: \$240.00 from county funds; \$60.00 from local sources (tuition).



PAULINE SCHOOL.

Nearest School: Bragg School, three miles west.

Teachers: H. E. Mathis; Miss Elizabeth Andrews, Ass't., P. O., Halcynsdale, Ga.

Trustees: H. A. Edenfield, J. F. Williams, Jesse Williams, Jim Clark, Isaah Bell.

Organization: School year, six months; two teachers; eight grades; ninety-two pupils; program posted; girls' garden club and boys' corn club; no industrial work attempted.

Grounds: Titles in Board of Education; area, four acres; well fenced; new location, and improvements just beginning; two well-built closets, average condition.

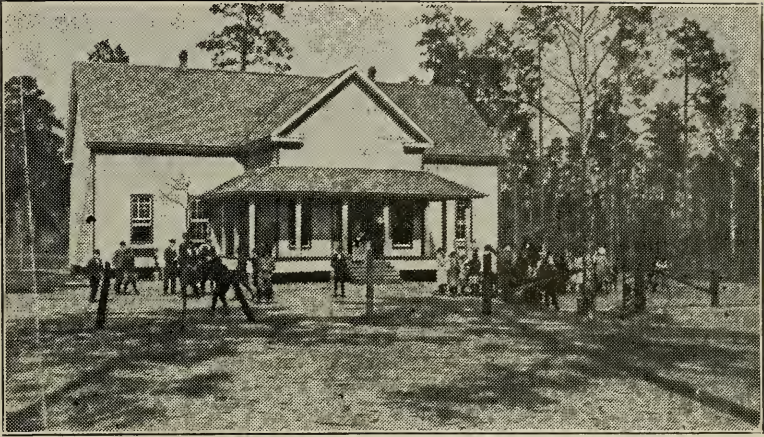
Building: Value, \$2,000.00; two rooms; cloak rooms; veranda; ceiled; painted; well lighted and ventilated; well-planned building; orderly and well kept.

Equipment: Single patent desks; good blackboards; framed pictures; organ; no maps (1 county map); no charts; no globes; no library, or other helps.

Water: Well, with pump, on lot; individual cups.

Community Uses and Help: None organized as yet.

Maintenance: \$450.00 from county funds; \$125.00 from local sources (tuition).



PRETORIA SCHOOL.

Nearest Schools: Brannen Groover School, three miles east;
Anderson School, three miles southwest.

Teachers: Miss Polly Wood; Miss Myrtle Anderson, Ass't., P.
O., Statesboro, Ga.

Trustees: W. W. Mikell, K. W. Waters, M. W. Rushing.

Organization: School year, six months; two teachers; seven
grades; sixty-five pupils; literary club; debating club;
corn and canning clubs; singing.

Grounds: Titles in Board of Education; area, three acres; no
gardens; one closet, average condition; yards well
fenced.

Building: Value, \$1,300.00; two rooms; two cloak rooms; ceiled;
painted; well lighted; well kept.

Equipment: Patent desks in three sizes; good blackboards; no
charts, globes, or framed pictures; library, eighty-five
volumes.

Water: Well on lot; individual cups.

Community Uses and Help: None.

Maintenance: \$420.00 from county funds; \$150.00 from local
sources (tuition).



PLEASANT GROVE SCHOOL.

Nearest School: Emmitt School, three miles south.

Teacher: T. H. Zitterower, P. O., Statesboro, Ga.

Trustees: J. M. Phillips, J. J. Martin, J. M. Rushing, M. A. Martin, W. H. Anderson.

Organization: School year, six months; one teacher; seven grades; forty pupils; industrial work in well-planned school garden; clubs.

Grounds: Titles in Board of Education; area, one acre; well fenced yard; gardens well laid off; grounds well kept.

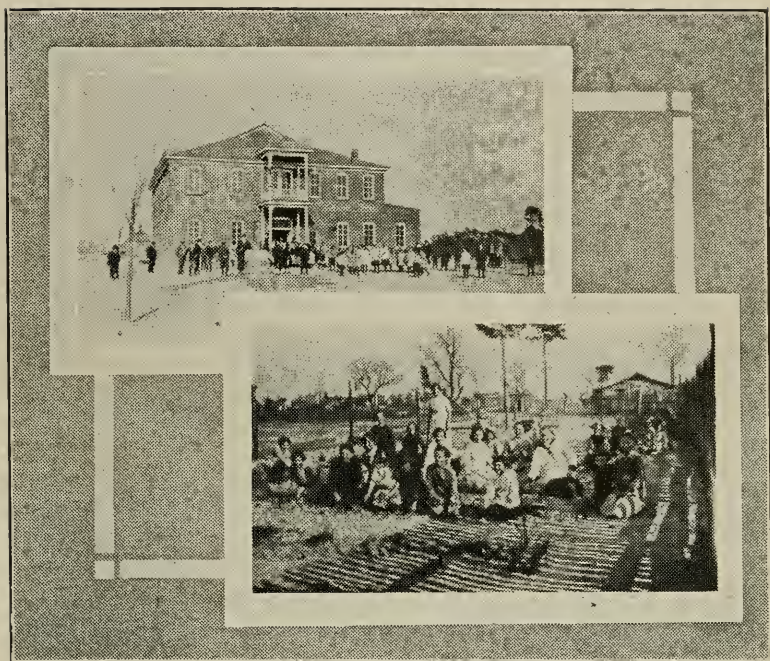
Building: Value, \$750.00; one room; veranda; no cloak rooms; ceiled; painted; well lighted; well kept.

Equipment: Home-made desks; good blackboards; no maps, charts, globes, pictures, library, or other helps.

Water: Well on lot; common dippers.

Community Uses and Help: None.

Maintenance: \$240.00 from county funds; \$120.00 from local sources (tuition).



PORTAL HIGH SCHOOL.

Nearest School: Bradwell School, two miles.

Teachers: J. H. St. Clair; Miss Lucile Harmon, P. O., Portal, Ga.

Trustees: J. C. Parrish, E. Daughtry, M. C. Hulsey, W. W. Parrish.

Organization: School year, eight months; two teachers; nine grades; ninety-three pupils; canning clubs.

Grounds: Titles in local trustees; area, three acres; well located school gardens fenced and planted in flowers, etc.; two closets; ample play grounds, unimproved; well kept.

Building: Value, \$5,000.00; brick; four class rooms and auditorium; cloak rooms; plastered and painted; well lighted and ventilated; well planned; well kept.

Equipment: Single patent desks, four sizes; good blackboards; no maps, globes, framed pictures (one), or other helps. Small reference library.

Water: Well on lot; common dippers.

Community Uses and Help: Occasionally used as community auditorium; no organized help.

Maintenance: \$510.00 from county funds; \$300.00 from local sources (tuition).



PURVIS SCHOOL.

Nearest School: Eight miles to nearest school in Bulloch County, near line of Bryan County.

Teacher: Miss Mary Gabbett, P. O., Ellabelle, Ga.

Trustees: G. W. Scott, Linton Neal.

Organization: School year, six months; one teacher; six grades; forty-six pupils; no program posted; twenty-nine recitations; no industrial work attempted.

Grounds: Titles —; area,—; entirely unimproved; badly kept; one closet, condition bad.

Building: Value, \$600.00; one room, 20 x 40 feet; no cloak rooms; ceiled; unpainted; poorly lighted; badly kept.

Equipment: Double home-made desks; very poor blackboards; no maps, charts, globes, pictures, library, other helps.

Water: Well on lot; condition very bad; common dippers.

Community Uses and Help: None.

Maintenance: \$240.00 from county funds; \$60.00 from local sources (tuition).



RIMES SCHOOL.

Nearest Schools: Jimps School, four miles north; Emmit School, four miles east.

Teacher: Miss Kate McCorkle, Jimps, Ga.

Trustees: J. M. Miller, J. L. Hahans, E. S. Gilman, J. B. Kennedy.

Organization: School year, six months; one teacher; six grades; thirty-seven pupils; program posted; forty-six recitations; no industrial work.

Grounds: Titles in Board of Education; area, four acres; new location, not yet improved; one closet, average condition.

Building: Value, \$750.00; new; one room; veranda; no cloak rooms; insufficiently lighted; ceiled; painted; fairly well kept.

Equipment: Home-made desks; poor blackboards; no maps; no charts; no globes; no library, or other helps.

Water: Well on lot; covered cooler; common dippers.

Community Uses and Help: None.

Maintenance: \$210.00 from county funds; \$90.00 from local sources (tuition). (Note: Building burned since inspection.)



ROCK HILL SCHOOL.

Nearest School: Aaron, four miles south.

Teacher: Mrs. Mamie Sykes, Aaron, Ga.

Trustees: None.

Organization: School year, five months; one teacher; five grades; forty-seven pupils; program posted; no industrial work.

Grounds: Title in local trustees; area, three acres; unimproved, but well cleaned up; no closets.

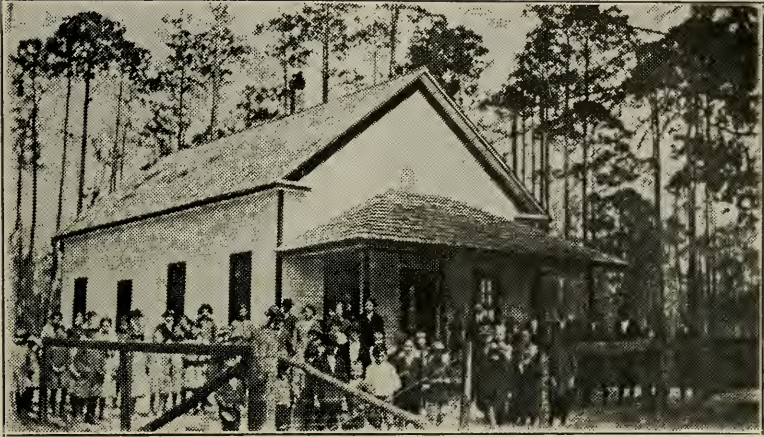
Building: Value, \$900; two rooms, 30 x 30 x 12, each; no cloak rooms; ceiled; unpainted; improperly lighted; well kept.

Equipment: Home-made desks; no blackboards; no maps; no globes; no charts; no library, or other helps.

Water: Well on lot; common dippers at well.

Community Uses and Help: None.

Maintenance: \$150.00 from county funds.



REEDY BRANCH SCHOOL.

Nearest School: Martin School, two and one-half miles south-east.

Teachers: J. A. Hodges; E. S. Jones, Ass't., P. O., Groveland, Georgia.

Trustees: B. D. Hodges, J. G. Neville, G. A. Lewis, F. M. Ne-Smith.

Organization: School year, five months; two teachers; seven grades; seventy-four pupils; no industrial work.

Grounds: Titles in Board of Education; area, one acre; small yard fenced; no gardens; two closets, well built and painted.

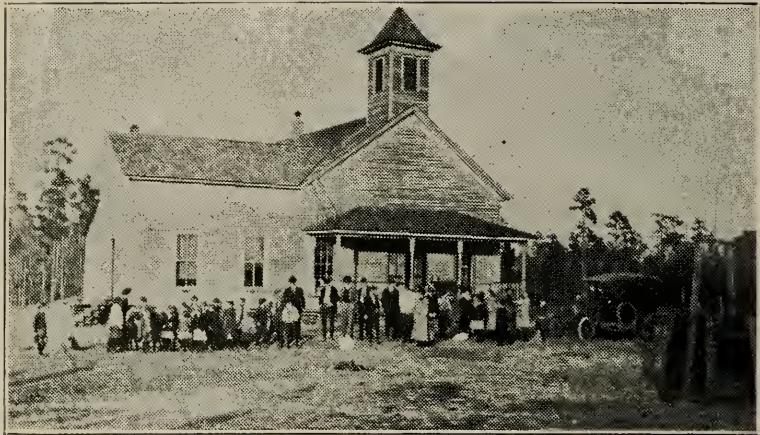
Building: Value, \$800.00; one room, 30 x 40 x 10 feet, divided by a curtain; veranda; no cloak rooms; ceiled; painted; well lighted; well kept.

Equipment: Single patent and double home-made desks; good blackboards; two maps; dictionary; organ; one chart; no globes, library, or other helps.

Water: Well on lot in good condition; individual cups.

Community Uses and Help: Used for singing meetings, etc.; no organized help.

Maintenance: \$325.00 from county funds; \$75.00 from local sources (tuition).



REGISTER SCHOOL.

Nearest School: Union, four miles south.

Teachers: Miss Jewell McDaniell; Miss Beulah McDekle.

Trustees: J. S. Riggs, D. M. Rogers, John L. Johnson, Jno. E. Collins, Hardy Collins.

Organization: School year, six months; two teachers; eight grades; eighty-five pupils; program posted; no industrial work; debating clubs.

Grounds: Titles, Board of Education; area, one-half acre; grounds neglected; two closets.

Building: Value, \$1,200.00; two rooms; no cloak rooms; painted outside; ceiled; unpainted, inside; fairly well lighted; fairly well kept.

Equipment: Home-made desks; new blackboards; no maps; no charts; no globes; no pictures; fifty volumes library.

Water: Well on lot (unsafe); common dippers.

Community Uses and Help: None.

Maintenance: \$420.00 from county funds; \$190.00 from local sources (tuition).



SAVANNAH ROADS SCHOOL.

Nearest School: Ivanhoe, two miles.

Teacher: M. W. Rhiner, Stilson, Ga.

Trustees: C. H. Warnock, R. L. Graham, Homer White.

Organization: School year, six months; one teacher; seven grades; thirty-two pupils; program posted; twenty-three recitations; no industrial work; canning club.

Grounds: Titles in a corporation; area, two acres; unimproved; one closet, condition bad.

Building: Value, \$750.00; one room, 24 x 36 x 12 feet; veranda: no cloak rooms; painted, outside; ceiled, unpainted, inside; well lighted; well kept.

Equipment: Single and double patent desks; ten feet blackboard; one map of Ga.; one picture George Washington and one of Governor Slaton; no charts, globes, library or other helps.

Water: Well on lot; common dippers.

Community Uses and Help: None.

Maintenance: \$225.00 from county funds; \$60.00 from local sources (tuition).



STILSON SCHOOL.

Nearest School: Knight School, four miles north.

Teachers: S. E. Groover; Miss Essie McElveen, Ass't., P. O., Stilson, Georgia.

Trustees: J. E. Brannen, Aaron McElveen, W. J. Brannen, A. J. Proctor, G. M. Lee.

Organization: School year, six months; two teachers; eight grades; fifty-four pupils; program posted; no industrial work or clubs.

Grounds: Titles in local trustees; area, one acre; unimproved; no gardens; two closets, condition average.

Building: Value, \$1,350.00; two story, three rooms; no cloak rooms; badly planned for class-room purposes; fairly well lighted and ventilated; ceiled; painted outside only; fairly well kept.

Equipment: Double patent desks; eighty feet blackboards; small organ (not in use); one picture R. E. Lee; no charts, globes, maps, or other helps. Fifty volumes library. Insufficiently heated.

Water: Well nearby; common dippers.

Community Uses and Help: None.

Maintenance: \$360 from county funds; \$180.00 from local sources (tuition).



SPRING HILL SCHOOL.

Nearest School: Martin School, three miles north.

Teacher: S. L. Coffee, P. O., Groveland, Ga.

Trustees: None.

Organization: School year, six months; one teacher; six grades; thirty-five pupils; program posted; twenty-eight recitations; no industrial work or clubs.

Grounds: Titles,—; area,—; entirely unimproved; one closet, average condition.

Building: Value, \$450.00; one room, with veranda; no cloak rooms; unceiled; unpainted; fairly well lighted; badly kept.

Equipment: Home-made desks; twenty feet good blackboards; no maps, charts, globes, pictures, library, or other helps.

Water: Well on lot; common dippers.

Community Uses and Help: None.

Maintenance: \$240.00 from county funds; \$50.00 from local sources (tuition).



SMITH-ALLEN-DEAL SCHOOL.

Nearest Schools: Tyson's Grove, four miles west; Statesboro, three miles.

Teachers: Miss Ruth Proctor; Miss Mildred Wood, Ass't., P. O., Statesboro, Georgia.

Trustees: Jacob Smith, John Deal, L. W. Deal, L. E. Allen, Charley Allen.

Organization: School year, six months; two teachers; seven grades; seventy pupils; program posted; twenty-one recitations; canning and corn clubs, and literary clubs; drawing and hand work.

Grounds: Titles in Board of Education; area, three acres; well fenced; planted in trees and flowers; park seats over yards; small gardens; well-kept premises; two closets, good condition.

Building: Value, \$2,000.00; one room, 65 x 70 x 16 feet; separated into two rooms by a thin curtain; fine for auditorium, but very poorly planned for class-room purposes; cloak rooms; lighting fair; ventilation good; well kept.

Equipment: Single patent desks; fairly good blackboards; one map of Ga., and one of county; excellent selection of well-framed pictures; good charts; sand tables, and other illustrative materials; library loaned by the teachers.

Water: Well on lot in good condition; covered cooler, and individual drinking cups.

Community Uses and Help: Occasionally used; organized club.

Maintenance: \$480.00 from county fund; \$210.00 from local sources (tuition).



SYLVESTER SCHOOL.

Nearest Schools: New Castle School, three miles south; Union School, three and one-half miles southeast.

Teacher: L. D. Rushing, P. O., Register, Ga., R. F. D.

Trustees: J. G. Neville, W. H. Rushing, L. J. Anderson, J. R. Rimes, Dr. Geo. P. Strange.

Organization: School year, five months; one teacher; eight grades; forty-five pupils; program posted; no industrial work or clubs; probably canning club forming.

Grounds: Titles in Board of Education; area, two acres; yard well fenced; well kept; one closet, average condition; no gardens.

Building: Value, \$1,000.00; one room; veranda; no cloak rooms; well planned; well lighted and ventilated; painted (good colors); not well kept.

Equipment: Good double home-made desks; twenty feet good blackboard; one U. S. history map and one Ga. map; no charts; no globes; no library, or other helps. A few framed pictures, not well selected.

Water: Well on lot; common dippers.

Community Uses and Help: None.

Maintenance: \$200.00 from county funds; \$185.00 from local sources (tuition).



SAND HILL FORD SCHOOL.

Nearest Schools: Snap School, four miles; Bragg School, four miles.

Teacher: Miss Ophelia Strickland, Statesboro, Ga.

Trustees: D. M. Jones, J. H. Newsome, Jim Hart.

Organization: School year, six months; one teacher; six grades; forty-three pupils; program posted; thirty recitations; no clubs or industrial work, except school gardens.

Grounds: Titles in Board of Education; area, two acres; yard well fenced; well kept; small gardens; planning improvements further; two closets, average condition.

Building: Value, \$800.00; one room; veranda; no cloak rooms; partly ceiled; painted outside, only; well kept; well lighted.

Equipment: Good home-made desks; poor blackboards; one U. S. history map; no charts, globes, library, or other helps. Several good pictures.

Water: Pump on lot: common dippers.

Community Uses and Help: None.

Maintenance: \$330.00 from county funds; \$120.00 from local sources (tuition).



SUNNY SIDE SCHOOL.

Nearest School: Statesboro, two miles north.

Teacher: Miss Lola Chance, Statesboro, Ga.

Trustees: F. E. Fields, W. B. Roach, George Bird.

Organization: School year, six months; one teacher; seven grades; forty-six pupils; program posted; forty-two recitations; no industrial work or clubs.

Grounds: Titles in Board of Education; area, two acres; unimproved; not well kept; no gardens; one closet, average condition.

Building: Value, \$750.00; one room; veranda; no cloak rooms; sufficiently, but improperly, lighted; painted; well kept.

Equipment: Single patent desks; good blackboards; a few framed pictures; no charts, globes, maps, library, or other helps.

Water: Well on lot; common dippers.

Community Uses and Help: None.

Maintenance: \$240.00 from county funds; \$60.00 from local sources (tuition).



SNAP SCHOOL.

Nearest Schools: Eureka, two miles north; Clito, five miles northeast.

Teachers: Miss Erle Wood; Miss Franklin, Ass't., P. O., Statesboro, Georgia.

Trustees: B. S. Mooney, H. L. Metts, H. B. Franklin.

Organization: School year, six months; two teachers; eight grades; forty-six pupils; program posted; forty recitations, each; some school gardening; corn and canning clubs; active debating clubs.

Grounds: Titles in —; area, three acres; well fenced, and well kept; flowers in beds, etc.; two closets, average condition.

Building: Value, \$1,300.00; two story (upper room used by Odd Fellows); one school room; unceiled (planning to ceil); painted outside, only; improperly lighted, and poorly planned for school purposes; well kept.

Equipment: Good home-made desks; poor blackboards; no maps; no charts; no globes; no library, pictures, or other helps; planning for library.

Water: Well on lot; common dippers.

Community Uses and Help: Used by Odd Fellows regularly, and occasionally by community; no organized help.

Maintenance: \$265.00 from county funds; \$180.00 from local sources (tuition).



TYSON'S GROVE SCHOOL.

Nearest School: Smith-Allen-Deal School, four miles east.

Teachers: Preston Edwards; Miss Gladys Bird, Ass't., P. O., Statesboro, Ga.

Trustees: Joshua Smith, S. A. Prosser, J. H. Brannen.

Organization: School year, six months; two teachers; seven grades; seventy-eight pupils; program posted; canning clubs; literary clubs; drawing in primary grades; good illustrative materials.

Grounds: Titles in Board of Education; area, two acres; unimproved; one closet, average condition.

Building: Value, \$1,000.00; one room, divided by curtain; good auditorium, but poorly planned for class rooms; veranda; no cloak rooms; ceiled; painted; fairly well lighted; well kept.

Equipment: Good home-made desks; good blackboards; good pictures; no maps; no charts; no globes; organ; thirty volumes library.

Water: Well on lot; common dippers.

Community Uses and Help: None, except occasional.

Maintenance: \$400.00 from county funds; \$175.00 from local sources (tuition).



UNION SCHOOL.

Nearest School: Register, five miles north.

Teacher: J. N. Holloway, P. O., Register, Ga.

Trustees: S. L. Neville, H. J. Aikin, Morgan Anderson, H. L. Aiken, J. G. Williams.

Organization: School year, six months; one teacher; eight grades; forty-four pupils; no program posted; forty recitations; no industrial work or clubs.

Grounds: Titles in local trustees; area, two acres; unimproved; not well kept; one closet, average condition.

Building: Value, \$1,000.00; one room; veranda; no cloak rooms; fairly lighted; ceiled; painted; not well kept.

Equipment: Double patent desks; fair blackboards; no maps; no charts; no globes; no pictures; no library, or other helps.

Water: Well on lot; pump; common dippers.

Community Uses and Help: None.

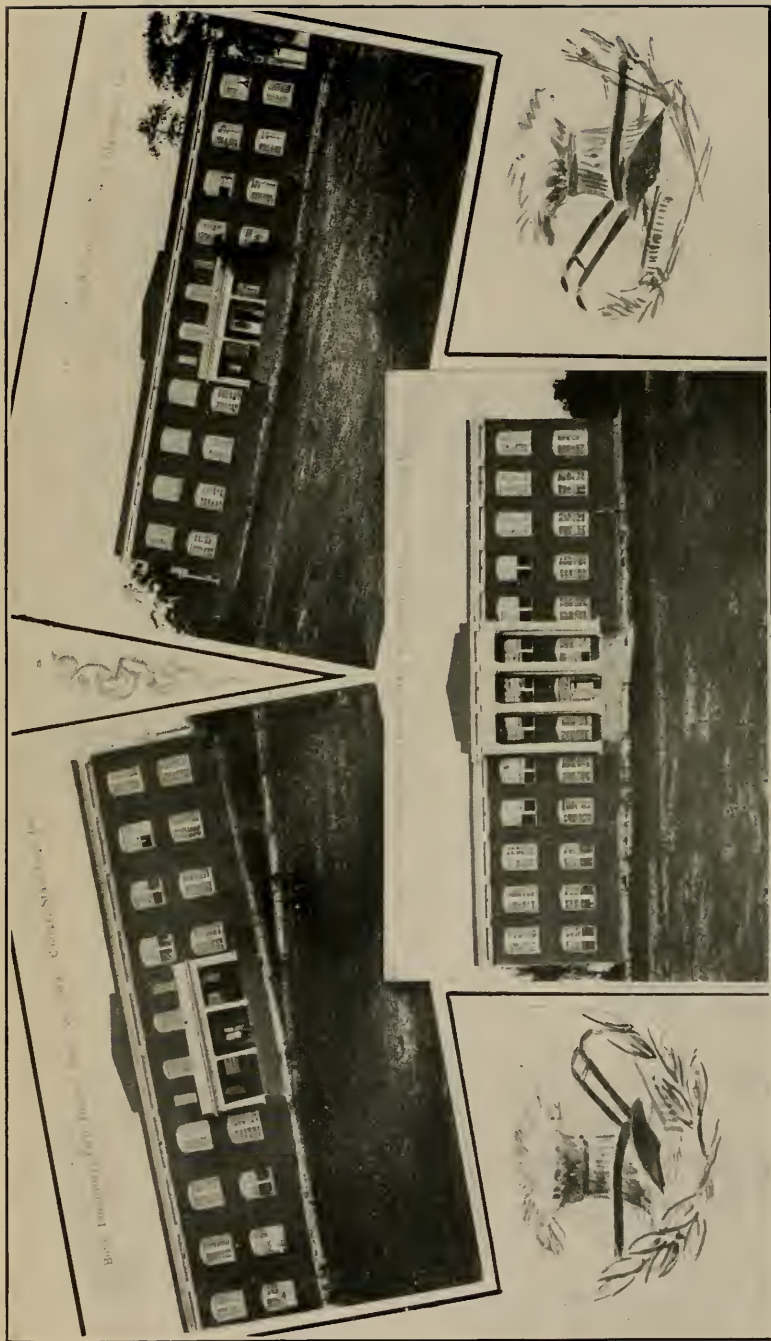
Maintenance: \$240.00 from county funds; \$150.00 from local sources (tuition).

STATESBORO HIGH SCHOOL.

(Three Year High School, Group 111, Partially Accredited.)

Superintendent, Prof. H. D. Meyer; seventeen teachers; 521 pupils; ten acres in school lot; \$20,000.00 buildings; well equipped, except as to laboratories; sanitary water supply; sanitary toilets; no outstanding bonds or other indebtedness; a well-organized active Parent-Teachers' Association of sixty-five members.

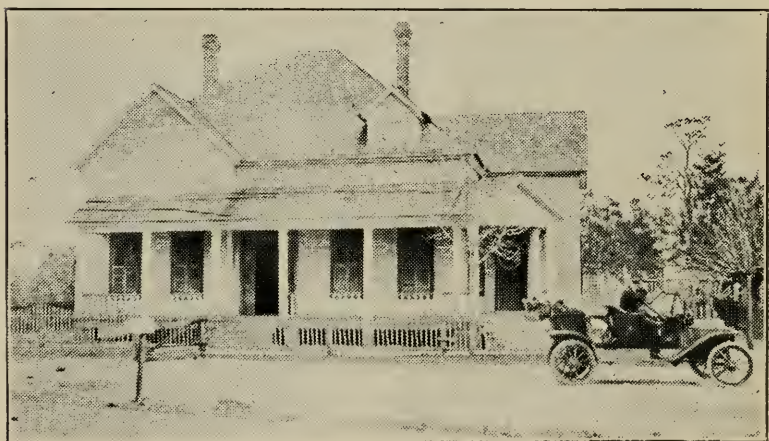
This institution did not come within the limits of the survey, and the above is given as information.



FIRST DISTRICT AGRICULTURAL HIGH SCHOOL.

Prof. F. M. Rowan, Superintendent, Statesboro, Ga.

(This institution did not come within the survey of the county but above is given as information.)



THE NEGRO SCHOOLS.

While making this survey there was a week's institute conducted for the negro teachers under the general direction of Special Supervisor Godard, in which we rendered some assistance. The institute was well attended, and the entire week devoted to industrial features.

It has been thought by some that much of the money and effort devoted to negro education has been a waste, and some of it worse than waste. The grain of truth in such opinion probably comes from the lack of proper supervision and direction. The administration in Bulloch County appears to be giving serious concern to the *proper direction and supervision* of the negro schools. The helper secured through the Jeanes Fund has enabled this to be done more effectively. An attempt has been made to stimulate a sentiment among the negro schools for better sanitary conditions, and gratifying evidence of this was apparent in the cleanliness of many of their school houses. The negro school, as a rule, is closely related, physically and otherwise, to the local church and lodge. All of the negro schools of the county were visited and inspected. The academic work is nearly alike in them all, and about as it averages elsewhere.

NO EQUIPMENT.

Beyond the fact that an effort is being made to put the emphasis upon sanitation, and to introduce certain forms of light industrial work into the negro schools, there is nothing particularly deserving notice. The schools were photographed, and the pictures will serve to show their general physical condition.



1, Love School; 2, Statesboro School; 3, Smith and Brannen School; 4, Clito School; 5, Free Chapel School; 6, Eureka School.



1



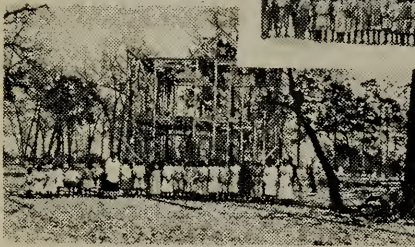
2



3



4



5



6

1, Pretoria School; 2, Robt. Brannen School; 3, Portal School; 4, Red Hill School; 5, New Hope School; 6, Spring Hill School.



1



2



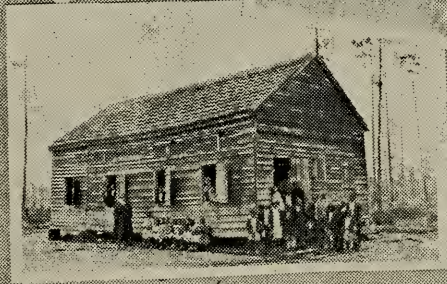
3



4

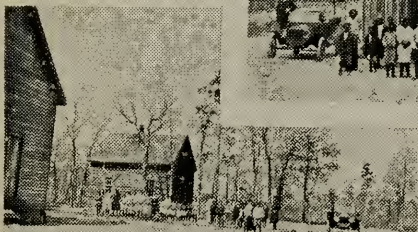


5



6

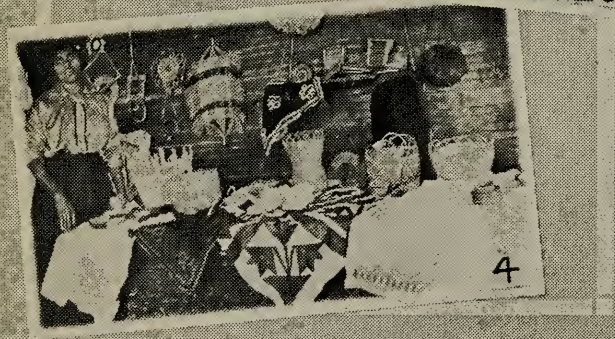
1, Sand Ridge School; 2, Handshaw School; 3, Arcola School; 4, New Arcola School; 5, Bethel School; 6, Little Bethel School.



1, Mt. Zion School; 2, Watersville School; 3, Miller Grove School; 4, Whitesville School; 5, Lee's Grove School; 6, St. Marys School.



1, Register School; 2,; 3, Fields School; 4, Aaron School; 5, Johnson Grove School; 6, Ada Belle School.



1, Riggs School; 2, Inside View of Riggs School; 3, Negro Teachers' Institute; 4, Industrial Work, Bulloch County.



0 019 877 504 6

