

DRAWING BOOK

E. R. COLE, BOOKSELLER AND STATIONER, SYDNEY.

F. H. DuBoulay

1880

Worms in leaf-mines made by
Hyalinodes flavipes
(Hyalinodes)

61.	62.
	
+ <i>Stigmoderma</i> <i>haemata</i> Hope.	<i>Stigmoderma</i> <i>sanguinipes</i> Hope.
Drawn from a single specimen in the Adelaide Museum (determined by the Rev. Blackburn), by J. G. O. Leppner + abdomen red underneath 26. 8. 89.	



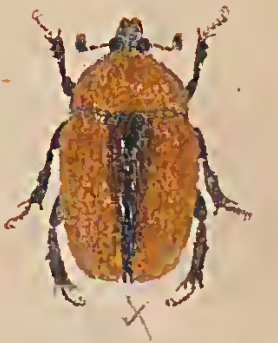
Dilochroa
(Schizorrhina) *Bakewelli* White
N.S.W. & Victoria.



Dilochroa
(Schiz) *Atripennis* Macleay
Queensland



TRICHAULAX = *Marginipennis*
Queensland



Schiz *Impar* Macleay
Queensland
TAPINOSHEMA IMPAR.



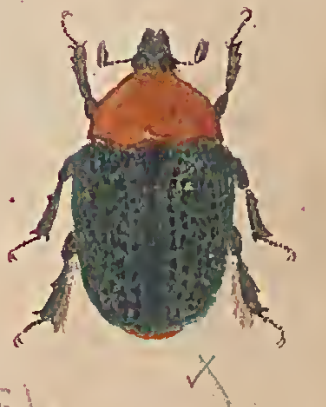
CHONDROPYGA = *Gulosa* Farnow
Victoria



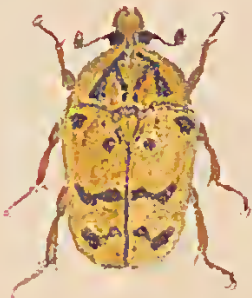
PHAEOPHARIS = *Browni* Lieby
Queensland



Nortoni White
Schiz *Tricophyga* Thompson
Queensland



Dysectoda
Schiz *Digglesi* Farnow
Queensland



EUPYECILA *Inscripta* Farnow
W. Australia



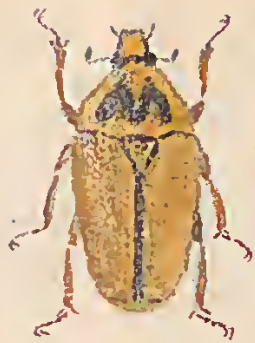
LYRAPHORA *Palmata* Schoum.
N.S. Wales.



CHLOROBAFTA *Besti* Westw.
Victoria



EUPYECILA *Australis* Farnow
N.S. Wales



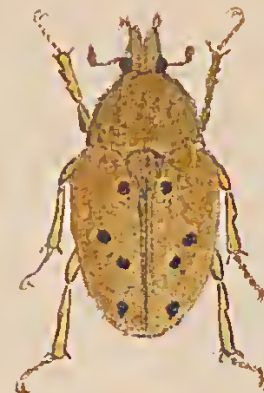
ABLACOPUS Trapezifera, *Thoms.*
Queensland



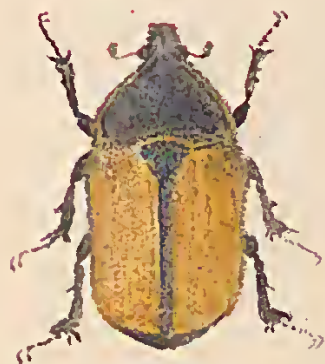
DIAPHONIA Nigriceps, *Blanch.*
West. Australia



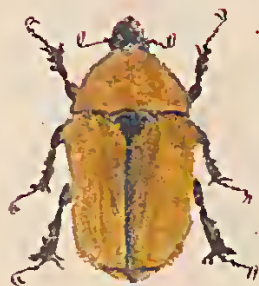
PLATEDELOSIS Bassii, *White.*
Queensland



Schiz. Atropunctata, *Kireby.*
Queensland



DIAPHONIA Parryi, *Yanson.*
South. Australia



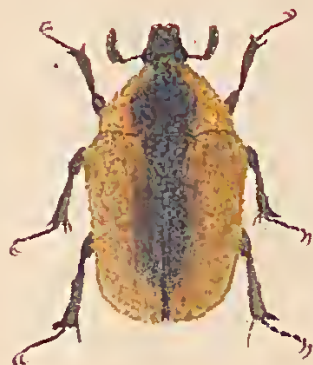
MELOBASTES Xanthopyga, *Genm.*
South. Australia



DILOCHROSIS Castanea, *Yanson.*
West. Australia



MICROPECILA Cincta, *Donov.*
N. S. Wales



DIAPHONIA Dorsalis, *Donov.*
N. S. Wales + Vic



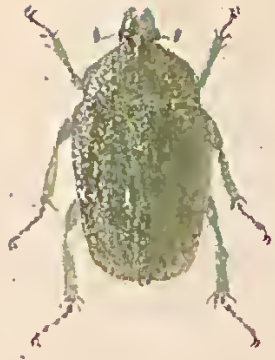
CHLOROBAPTA Frontalis, *Donov.*
Victoria
W. A.



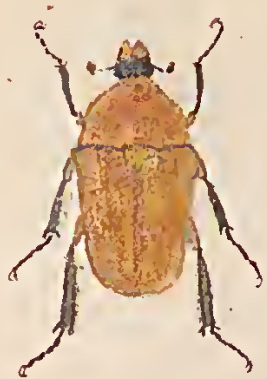
POLYSTIGMA Punctata, *Donov.*
N. S. Wales



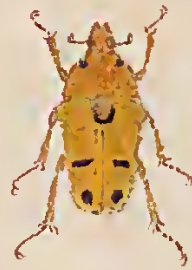
CAMILLA Decorticata, *Mey.*
Queensland



HEMIPHARIS *insularis*
North Australia



PECILOCEPHALA *succinea*; Hope.
West-Australia



NEORRHINA *Ochracea*, Westw.
Queensland



Schizura *Polehra*, Mely.
Queensland



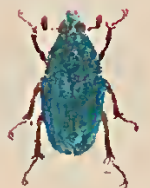
CHONDROPYGA *Hirticeps*, Macleay.
Queensland



CACOECHROA *Variabilis*, Mely.
N. S. Wales



Cet^{ae} *Viridicuprea*
Queensland



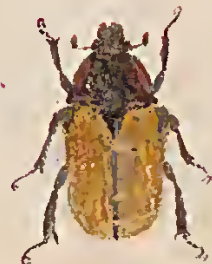
Cet^{ae} *Fulgens*, Mely.
Queensland



CETONIA *Tibialis*
Mely.



PLATEDELOSIS *Velutina*, Mely.
North Queensland



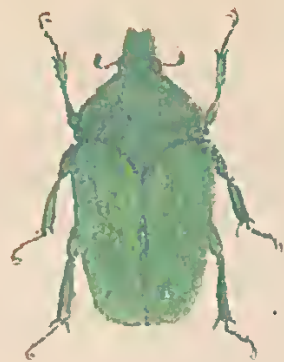
CACOECHROA *Symnopleura* Fischer.
N. S. Wales



LYRAPHORA *Stratiota*, Blanch.
Queensland



Lomaptera Duboulayi, Thoms.
Queensland



L^e. Yorkiana, Janson.
Cape York



L^e Cinnamomea, Raffs.
Queensland



L^e Pulchripes
Cardwell, Thoms



MICROPECILA.
Breweri.
Janson



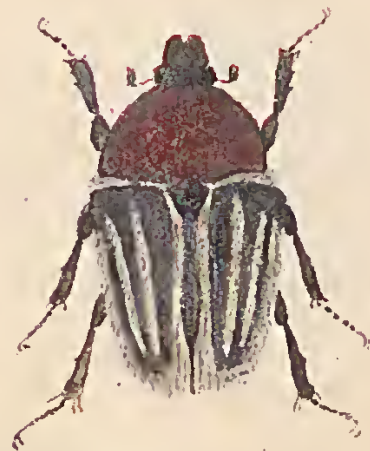
LYRAPHORA Ocellata, Mely.
Queensland



Schiz^a Nigrans, Mely.
Queensland



CLITHRIA Evenemis, Burm. METALLESTHES Rugosa, Schaum.
Victoria West Australia



TRICHAULAX Alma ♂.
N.S. Wales



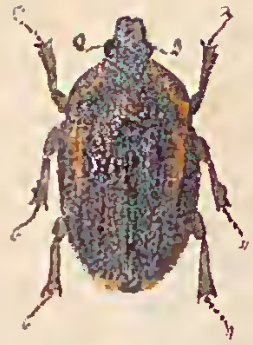
T. Carinata (Gronov).
Victoria
var of philipoi.



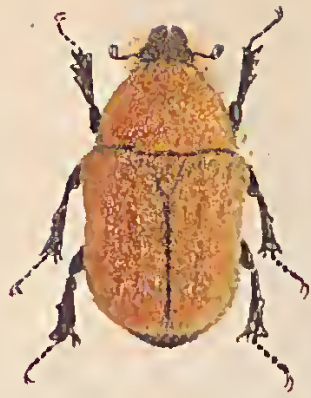
T. ALMA. ♀
Cape York



T. Phillipi, Schreib.
Victoria



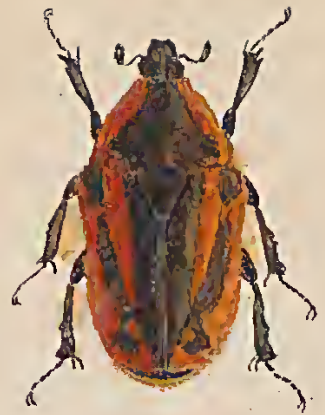
LYRAPHORA *Deyrollei*, Thoms.
South Australia



West Australia



Queensland



Queensland



21.
Lyraphora assimilis, Mely.
Bower. Queensland



West Australia



METALLESTHES *metalliseus*, White
West Australia



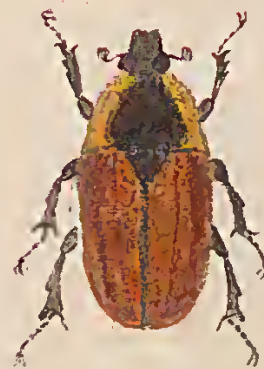
Cape York



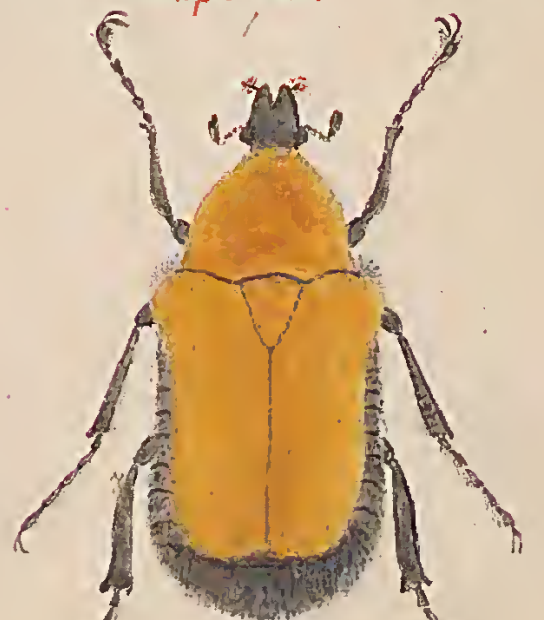
HEMICHNOODES *Mnizechi* ♀
Esperance Bay. W.A. Jarrold.



Coopers Creek W.A.



CHONDROPYGA *notabilis*, White.
Queensland

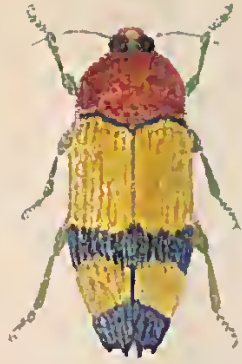


H. *Mnizechi*, ♂
Jarrold.

1880



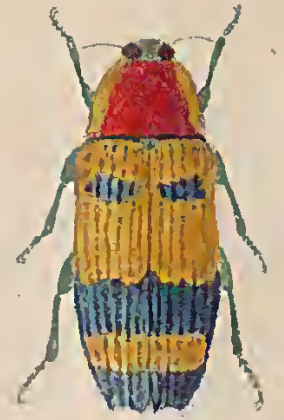
Aprosiectus Duivenbodei
North Australia



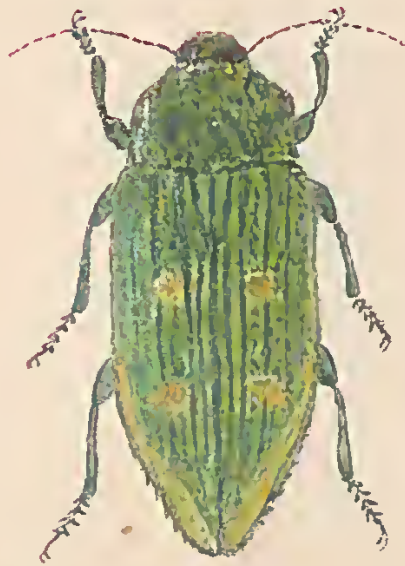
Stigmodon Sternoceroides Germ.
Symple Queensland



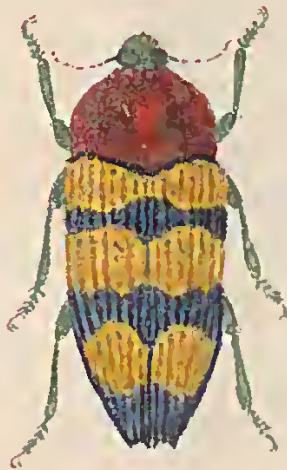
Metaxamorphia Greyi
New South Wales & Queensland



Stigmodon Duboulayi Saund.
West Australia



Chalchicomula Ajax Saund.
Queensland



Stigmodon Spencei Lapet. Gray.
N.S.W.



Stigmodon Chevrolati Germ.
W Australia



Stigmodon Murrayi, Germ and Hare.
W Australia



Stigmodon Martini Saund.
N. W. Australia



Stigmodon Bifasciata, Saund.
W. Australia



Stigmodon Saundersii, C.O. Waterh.
Clarence River, N.S.W.



Stigmodon Flavicollis, Saund.
S. Australia



Stig^d Cyanura, Hope, 1846.
W^t Australia
♂ conspicillata, White 1843.
(later must stand)



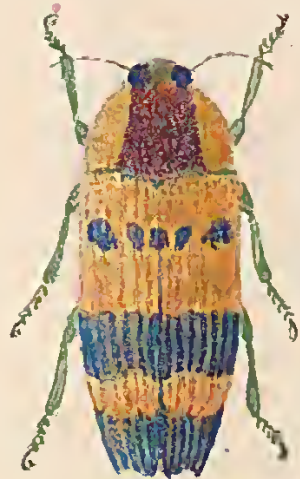
Stig^d Westwoodi Saund.
W^t Australia



Stig^d Grandis, Donos.
N. S. Wales



Rockhampton



Stig^d Macfarlandi
Cape York



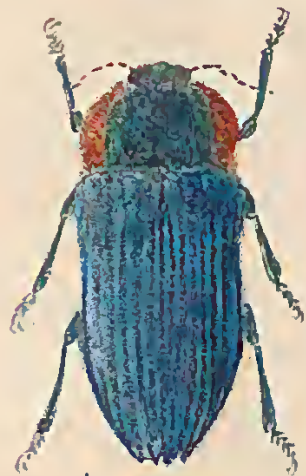
Stig^d Fortnumi
Victoria & New South Wales



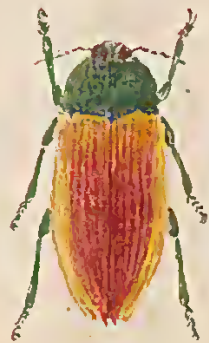
Brisbane



Stig^d Viticollis Massey,
Vic^t N.S.W. & Queensland



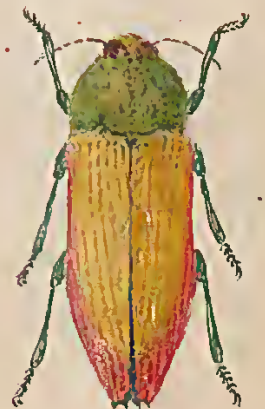
N. S. Wales



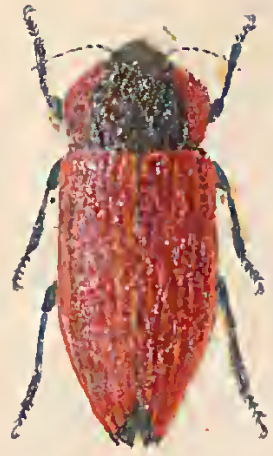
Queensland



Queensland



Stig^d Exicicollis
Queensland



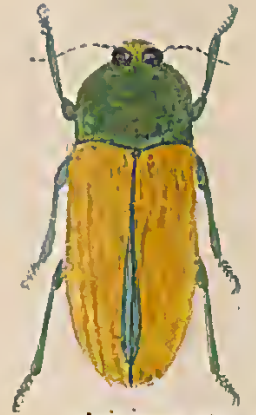
Stig^d Sanguinipennis Lap et Gory.
Victoria



Stig^d Congener, Saund.
South Australia



Stig^d Similis, Saund.
Queensland



Spinipennis Gory.
Stig^d Spinipennis
Queensland



Stig^d Menaleas, Thoms.
Victoria



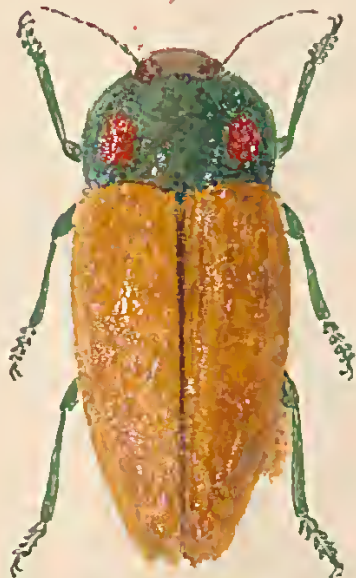
Stig^d Affinis, Saund.
N. S. Wales
(*limbata*, of Lap et Gory.)



Stig^d Cruentata, Kirby.
Victoria



Stig^d Lessoni Lap et Gory.
Queensland
(*acutithorax* of Thoms.)



Calodema Regalis Lap et Gory.
Queensland



Chal^z Salamandra = Vittata
Queensland Thoms.

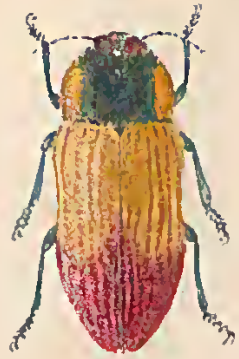


Victoria

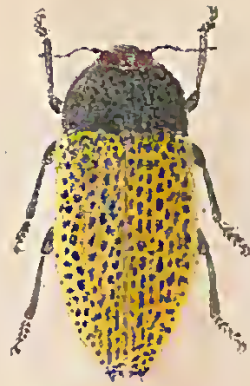


Stig^d Goryi Lap et Gory.
New South Wales

1870



Queensland



Stig^d Jacquinoti Boid.
N.S. Wales



Stig^d Mitchelli Hope.
Victoria + N.S.W.



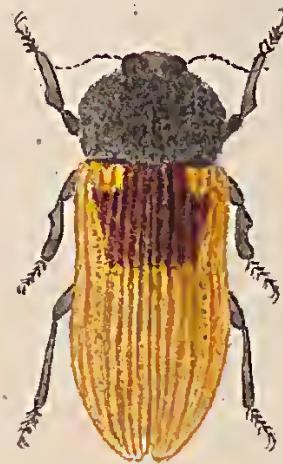
Stig^d Sanguinosa Hope.
West Australia



Victoria



Victoria



South Australia



CHRYSOBOTHIS Abrata Lapetgory.
West Australia



Stig^d YARELLI Lapetgory.
West Australia



Cyria Imperialis Donov.
Victoria

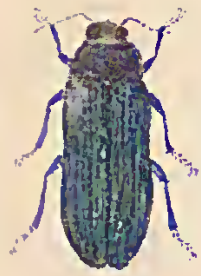


Diodoxus Scalaris Lapetgory.
Victoria



Chal^s Superba. Summ 1872
Queensland Lata
Waltw 1884.

1970



Victoria



Stig^d Semicincta Lap & Gory.
N. S. Wales



Stig^d Erythromelas Boisd.
West Australia



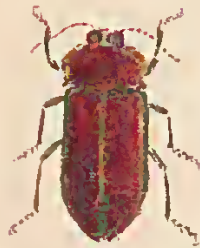
West Australia



Stig^d Simulata Lap & Gory.
West Australia



West Australia



Coris
Queensland



South Australia



Stig^d Deyrollei Thoms.
N. S. Wales
at Victoria. some are red
white yellow some
HMG.



South Australia



Victoria



South Australia



Polycesta Manstersi Muls.
N. S. Wales & Q.



S. Thomsonsii Saund.
N. S. Wales & Victoria.



West Australia



Stig^d Klugii Lap & Gory.
N. S. Wales



N. S. Wales



Stig^d Aurantiopicta
N. S. Wales & Queensland



Victoria & S. Australia



Stig^d rufipennis Kirby.
South Australia

This is a pale sp.
rare. creocipennis Lap & Gory



Stig^d Andersoni Lap & Gory.
N. S. Wales



Stig^d Cruenta Lap & Gory.
New South Wales



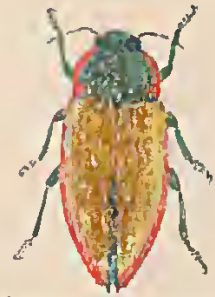
Stig^d Argutula ♂
Victoria
widerly ♂ of
semisuturalis Saund.
(have fallen many
times)



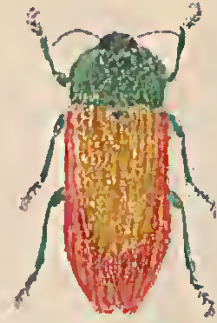
Stig^d Marginicollis Saund.
N. S. Wales



Queensland



Stig. Viridesignata
Queensland



Stig. Sanguineocincta Saund.
Queensland



Queensland



Queensland



Stig. Frenchii Birtm
Albury N.S.W.



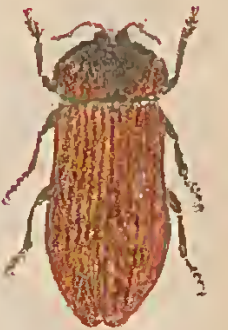
Rock. Queensland



W. Queensland



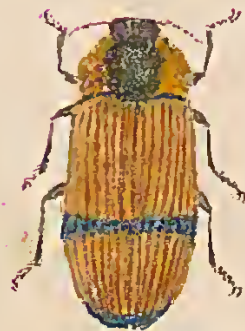
Calodema Plebejus
W. Queensland



IV Australia



Queensland



S. PICTIPES, Birtm
W. Australia



W. Australia.



W. Australia

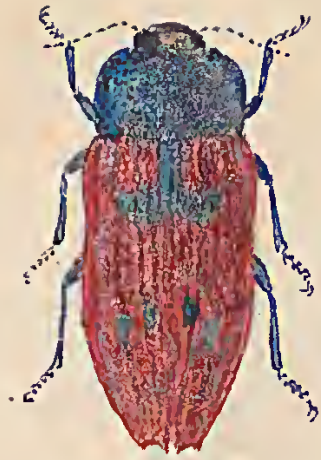


W. Australia





Stig^d Thoracica Saund.
N.S. Wales



Stig^d Bonvolatzi ^{Uloiri, Saund.}
W. Australia



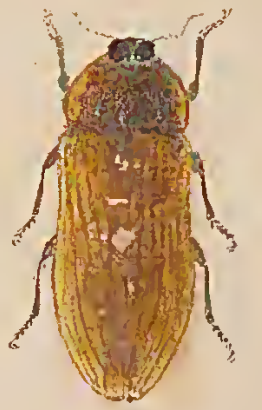
This is the ♀ of
Stig^d Signaticollis ^{Stroze}
W. Australia 1846.
CONSPICILLATA, White.
1843.



Stig^d Chalcodera ^{Thoms.}
W. Australia



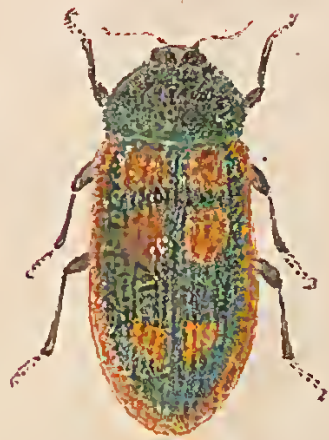
Stig^d Mnizechi Saund
W. Australia



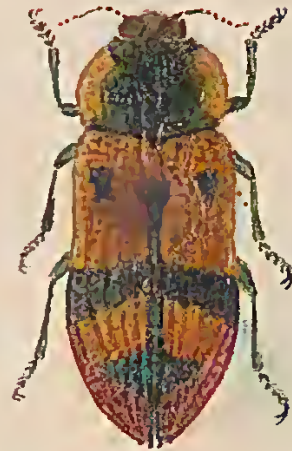
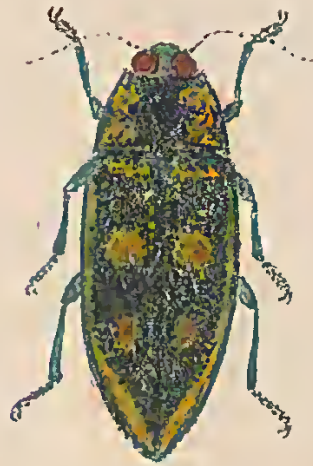
Stig^d Bruckii ^{Thoms.}
W. Australia



Stig Reichei ^{Lapetqony.}
W. Australia
(funerea of White)



Stig^d Cancellata ^{Donos.}
W. Australia
Chal Quadrisingnata
Queensland Saund.



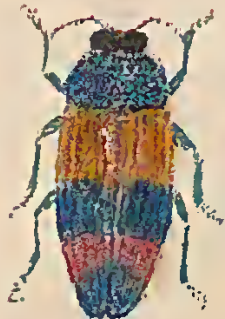
Stig Variabilis ^{Donos.}
N. S. Wales
(above has. det. S. Ross)
Stig^d Rugosipennis ^{Thomp.}
W. Australia



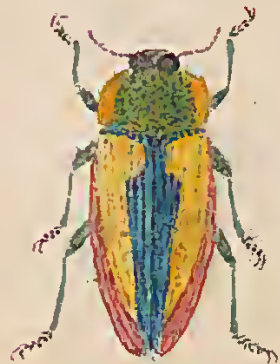
W. Australia



Calodema
N.E. Australia



Stig^d alternans
Queensland



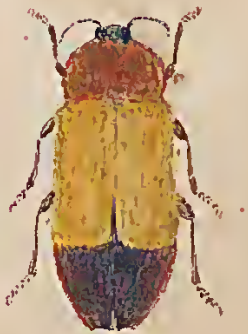
Stig^d Limbata ^{Donos.}
N. S. Wales



Victoria

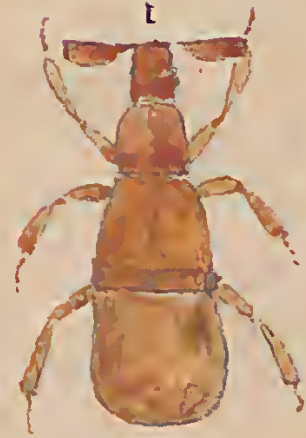


Chal^d Superba
W. Australia

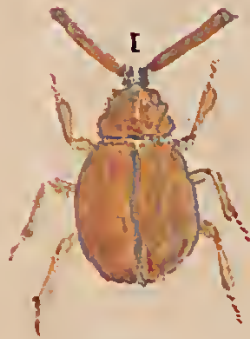
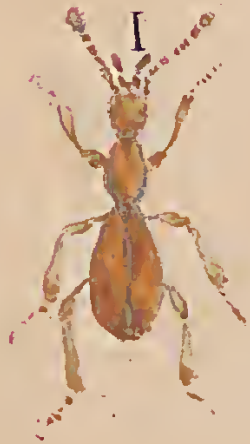


Stig^d Pascoei Saund
Victoria





Artibeus DuRoi



1887
1888
1889
1890
1891
1892
1893
1894
1895
1896
1897
1898
1899
1900

W. W. B. 1897

1897