

Historic, Archive Document

Do not assume content reflects current scientific knowledge, policies, or practices.

62.73

Disco

TRADE MARK REG. U.S. PAT. OFF.

1932
TWENTY-FIFTH
ANNUAL

LIBRARY
RECEIVED
★ FEB 23 1932 ★
U. S. Department of Agriculture.



DAKOTA IMPROVED SEED COMPANY

BREEDERS AND GROWERS OF PEDIGREED
FARM AND GARDEN SEEDS

MITCHELL, SOUTH DAKOTA

Vegetable Seed Trials

FEB 18 1932



Disco Special Yellow Dent

Grow What You Eat, Eat What You Grow, Can What You Can't

Disco Northern Grown Vegetable Seeds

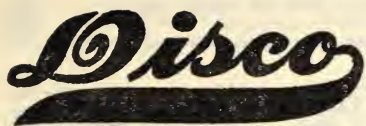
The vegetable seeds we offer represent the very finest types procurable and have been selected with greatest care. We offer only those seeds whose merits and adaptability to our Northern climate we have proven in our own trials and table tests. We supply simple cultural instructions with every order and our Service Bureau is at your disposal, always pleased to assist you to solve your problems.



VEGETABLES VITAMINES VITALITY

10% Extra Value Given on Early Orders for Vegetable and Flower Seeds

For the purpose of encouraging early ordering, we will allow a discount of 10% on all orders for Vegetables and Flower Seeds only received before March 1st. With each dollar's worth of Vegetable or Flower Seeds ordered during January and February, we will include entirely free an extra 10c worth. Select whatever you want and add it to your order. Order early and get the discount. This discount does not apply to Field Seeds which are net cash.



A Good Name Well Known
For 25 years has signified the best in seeds.
Grow Well Because They Are Well Grown.

To insure prompt attention address all orders to the firm, not to individuals. -:- -:- Use order sheet at end of catalog.

Special Price Sheet

quantities. All seeds are sold on the basis of the Disco Guarantee, printed on page 1 of the 1932 catalog. We recommend early ordering. If no Agent at your station, add sufficient to prepay freight or express. If you remit too much, surplus will be promptly refunded. If required by parcel post, your Postmaster will tell you in what zone from Mitchell you are located so that you may include correct postage with your remittance.

Should prices have changed when your order is received, if lower, we will refund balance, if higher, we will either reduce your order to the amount remitted, or ship C. O. D. for the balance, as you prefer.

Current Prices, January 1, 1932, F. O. B. Mitchell, So. Dak. No Cartage Charge.

OUR BRANDS

DISCO BRAND. Seed to qualify for this Brand must represent the cream of the crop, free from noxious weeds and of exceptionally high purity and germination.

EMERALD BRAND. Good quality seed fully equal to much of the so called number one seed.

SUNSHINE BRAND. Good general purpose seed, free from harmful or noxious weeds and of good germination.

ALL OUR ALFALFAS ARE SHIPPED OUT IN SEALED BAGS AND ORIGIN SUPPORTED BY U. S. VERIFIED ORIGIN CERTIFICATE. LOOK FOR THIS SEAL AND CERTIFICATE WHICH INSURES GENUINENESS

ALFALFA—60 lbs. per bushel	100 Lbs.	50 Lbs.	25 Lbs.	1 Lb.	Per Bu.
Grimm, Sunshine Brand, Grower's Affidavit.....	\$19.00	\$10.50	\$5.75	\$0.24	\$11.40
Grimm, Emerald Brand, Grower's Affidavit.....	19.50	10.75	5.85	.24½	11.70
Grimm, Disco Brand, Grower's Affidavit.....	20.00	11.00	6.00	.25	12.00
Grimm, No. 19A Disco Brand	22.00	12.00	6.50	.27	13.20
Baltic, Disco Brand	22.00	12.00	6.50	.27	13.20
Baltic, No. 11C, Disco Brand	25.00	13.50	7.25	.30	15.00
Cossack, Sunshine Brand, Grower's Affidavit.....	21.00	11.50	6.25	.26	12.60
Cossack, Emerald Brand, Grower's Affidavit.....	22.00	12.00	6.50	.27	13.20
Cossack, Disco Brand, Grower's Affidavit.....	24.00	13.00	7.00	.29	14.40

NO CHARGE FOR BAGS

The genuineness of the above Alfalfa is based on a thorough investigation of the pedigree and inspection of the growing crops by our own representatives.

Grimm, Official Sealed and Certified White Tag.....	25.00	13.50	7.25	.30	15.00
Grimm, Official Sealed and Certified Blue Tag.....	27.00	14.50	7.75	.32	16.20
Cossack, Official Sealed and Certified Blue Tag.....	28.00	15.00	8.00	.33	16.80

The genuineness of the above is attested to by the S. D. Crop Improvement Association or the Wyoming Department of Agriculture under whose supervision the fields are inspected and the seed graded, tagged and sealed.

Registered Disco No. 28, Alfalfa.....	22.00	12.00	6.50	.27	13.20
Dakota No. 12, Sunshine Brand.....	17.00	9.50	5.25	.22	10.20
Dakota No. 12, Emerald Brand.....	18.00	10.00	5.50	.23	10.80
Dakota No. 12, Disco Brand.....	19.00	10.50	5.75	.24	11.40
Black Hills Common, Disco Brand.....	17.00	9.50	5.25	.22	10.20
Ladak					

LOWEST PRICES IN YEARS

Prices on application.

Alfalfa Screenings for sowing with small grains as fertilizer, see page 4.

When comparing prices don't forget quality, if in doubt, don't hesitate to send for sample and if you give us a memo of your requirements we will not only send you samples, but will quote you special freight paid prices and we are confident that if you judge quality with price, your order will come to us.

DAKOTA GROWN SEED CORN—Shelled and Graded—56 pounds per bushel

	10 bu. or more per bu.	5 bu. or more per bu.	1 Bu.
Yellow Dent Varieties—			
Disco Special	\$1.60	\$1.70	\$1.80
Golden King	1.60	1.70	1.80
Fulton Yellow Dent	1.50	1.60	1.70
Golden Jewel	1.60	1.60	1.70
Minnesota No. 13	1.50	1.60	1.70
Wimples	1.50	1.60	1.70
White Dent—			
Disco 90-Day	1.60	1.70	1.80
Silver King	1.60	1.70	1.80
Northwestern Red Dent	1.60	1.70	1.80
Flints—			
Gehu	1.60	1.70	1.80
White	1.75	1.85	1.95
Rainbow	2.00	2.10	2.20
Squaw	2.25	2.35	2.45
Evergreen Sweet Fodder (46 lbs.).....	3.00	3.10	3.20
Butts and Tips for Silo.....	1.00	1.10	1.20

A GOOD YEAR TO CHANGE SEED CORN

Semesan Jr. Dust Disinfectant for Seed Corn—Page 32 for Prices.

DAKOTA IMPROVED SEED CO., MITCHELL, S. D.

(Read the Other Side)

**SPECIAL PRICE LIST FOR EARLY ORDERS—Subject to Prior Sale and Market Change.
Read Other Side Before Ordering.**

Current Prices, January 1, 1932, F. O. B. Mitchell, So. Dak. No Cartage Charges.

CLOVERS—60 lbs. per bushel.

	100 Lbs.	50 Lbs.	25 Lbs.	1 Lb.	Per Bu.
Sweet Biennial, Hulled and Scarified					
White Blossom, Sunshine Brand	\$ 6.00	\$ 3.25	\$ 1.75	\$.07½	\$ 3.60
White Blossom, Emerald Brand	6.50	3.50	1.85	.08	3.90
White Blossom, Disco Brand	7.00	3.75	2.00	.08½	4.20
Yellow Blossom, Disco Brand	7.00	3.75	2.00	.08½	4.20
Grundy County, Sunshine Brand	6.00	3.25	1.75	.07½	3.60
Grundy County, Emerald Brand	6.50	3.50	1.85	.08	3.90
Grundy County, Disco Brand	7.00	3.75	2.00	.08½	4.20
Hubam—Annual, Emerald Brand	10.00	5.25	2.75	.14	6.00
Hubam—Annual, Disco Brand	12.00	6.50	3.50	.16	7.20
Medium Red, Disco Brand	18.00	10.00	5.50	.23	10.80
Mammoth Red, Disco Brand	19.00	10.50	5.75	.24	11.40
Alsike or Swedish, Disco Brand	16.50	9.25	5.15	.21½	9.90
White or Dutch, Emerald Brand	48.00	25.00	13.00	.50	28.80
White or Dutch, Disco Brand	50.00	26.00	13.50	.55	30.00

**ALFALFA AND
ALL CLOVERS
LOW IN PRICE**

INNOCULATING CULTURE—See page 5

DISCO SELECTED MILLETS—50 lbs. per bushel

	100 Lbs.	50 Lbs.	25 Lbs.
Common, Disco Brand	\$ 3.00	\$ 1.75	\$ 1.00
Siberian, Disco Brand	3.00	1.75	1.00
Golden or Liberty (German), Disco Brand	3.50	2.00	1.10
Hog or Broom Corn, Disco Brand	2.75	1.60	.95
Proso, Disco Brand	2.75	1.60	.95
Early Fortune, Disco Brand	2.50	1.50	.85
Japanese (36 lbs. per bushel)—Billion Dollar Grass, Disco Brand	3.50	2.00	1.10

DISCO SELECTED GRASS SEEDS

	100 Lbs.	50 Lbs.	25 Lbs.
Timothy, Disco Brand	6.50	3.50	1.85
Awnless Brome, Disco Brand	16.00	8.50	4.50
Meadow Fescue or English Blue	12.00	6.50	3.50
Red Top (Solid Seed), Disco Brand	15.00	8.00	4.25
Kentucky Blue, Emerald Brand	18.00	10.00	5.50
Kentucky Blue, Disco Brand	20.00	11.00	6.00
Perennial Rye Grass, Disco Brand	10.00	5.25	2.75
Orchard Grass or Cocksfoot, Disco Brand	15.00	8.00	4.25
Reed Canary Grass, Disco Brand	65.00	33.50	17.25

**BAGS ARE
FREE**

DISCO SELECTED MIXTURES

	Prices on application.
Disco Permanent Pasture Mixtures	
Timothy and Alsike, Mixed	8.50 4.50 2.35
Timothy and Red Clover, Mixed	8.50 4.50 2.35

DISCO FORAGE SOILING CROPS

	100 Lbs.	50 Lbs.	25 Lbs.
Rape, Dwarf Essex, No. 1 Seed, Disco Brand	6.50	3.50	1.85
Sunflower, Russian Giant, Disco Brand	5.00	2.75	1.50
Early Amber Podder Cane, Disco Brand	2.75	1.50	.85
Amber Sorghum Cane, Disco Brand	3.75	2.10	1.15
Sudan Grass, Disco Brand	4.00	2.25	1.25
Feterita, Disco Brand	3.50	2.00	1.10
Kaffir Corn, Disco Brand	3.00	1.75	1.00

**CHEAPER THAN
EVER**

DISCO SELECTED SEED GRAINS, ETC.

Beans—				
Great Northern, Disco Brand	7.00	3.75	2.00	
Navy, Disco Brand	7.00	3.75	2.00	
Soy or Soja Beans, all strictly northern grown				
Manchu, Disco Brand	2.00	1.25	.75	
Illini, Disco Brand	2.25	1.35	.80	
Buckwheat—				
Japanese, Disco Brand		Prices on application.		
Silver Hull, Disco Brand		Prices on application.		
Field Peas—				
Canada Field, Disco Brand	5.50	2.85	1.50	
Speltz—				
Spring or Emmer, Disco Brand	1.50	.85	.50	

BARLEY—

	10 bu. or more per bu.	5 bu. or more per bu.	1 Bu.
Velvet, Disco Brand	\$.75	\$0.80	\$0.85
Glabron	.75	.80	.85

FLAX—56 lbs. per bushel

N. D. Wilt Resistant No. 114, Disco Brand	Prices on application.
Buda, N. D. 119, Disco Brand	Prices on application.
Bison	Prices on application.

SPRING WHEAT—

Marquis, Disco Brand	Prices on application.
Minidum Durum, Disco Brand	Prices on application.
Ceres, Disco Brand	Prices on application.

Complete Alphabetical List on page 32.

DAKOTA IMPROVED SEED CO., MITCHELL, S. D.

(Read the Other Side)

Mitchell, S. D.



Emmetsburg, Ia.

Bank References

Central Republic Bank,
Chicago, Ill.
First National Bank,
Chicago, Ill.
First National Bank,
Minneapolis, Minn.

*This Sign Has Stood for the Best in
Seeds For a Quarter of a Century*

Bank References

Mitchell National Bank,
Mitchell, S. D.
The Central Savings
Bank and Trust Co.,
Emmetsburg, Iowa.

1907 — 1932

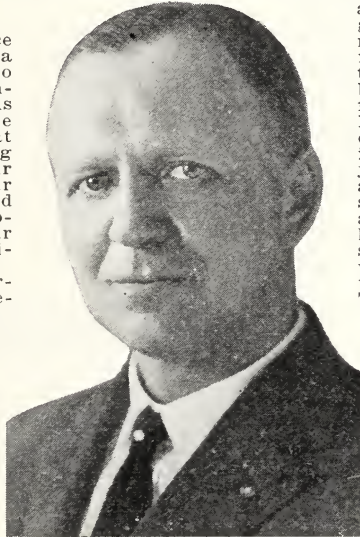
Stop Buying Bargain Seeds

Mitchell, S. Dak.
January 1, 1932.

Twenty-five years service dedicated to agriculture—a quarter of a century devoted to the improvement and the insured reliability of the seeds we offer to our innumerable farmer friends in this great Northwest of ours. Working for you and with you,—our plant, our experience and our resources are willingly placed at your disposal. Your problems are our problems, your interests and ours are identical—ever think of that?

We are emerging from perhaps the greatest period of depression ever experienced by farmers in our time. What with drought, market collapse and a multitude of set backs we sometimes wonder just what can happen next—but, "you can't keep a good man down."

Why not start 1932 right. You are looking forward to a season of bumper crops, so again we say—Why not start 1932 right. We have headed this letter "Stop buying bargain seeds," no need to explain that. We all know bargains can be costly. We all know bargains in seeds invariably means adulteration, inert impurities



Richard Burn, President

and weeds. Weeds are not a gift of nature—they are a serious menace to successful agriculture. Make up your mind this year to sow only the very best seed procurable. The difference in initial cost is so little, and that is where we come in to help you. We wish it were possible that we could just drop in on you some night and as the old timers used to say "we could forget tradin' and just talk" but that is hardly possible. However, should you be around Mitchell, why not call in at DISCO. We will be real glad to see you. Theodore Roosevelt once said, "There's a mighty human side to business when you really get acquainted with the men in it." So let's get acquainted.

We sincerely hope the New Year may be the turning point in the fortunes of you men out there on the farms. We want you to feel that. On our part we will do our utmost to give you that little extra service, better grades of seeds and at prices just as low as it is possible to make them.

Yours very truly,
DAKOTA IMPROVED
SEED COMPANY,
RICHARD BURN, President.

The *Disco* Guarantee

The DAKOTA IMPROVED SEED COMPANY guarantees the seed it sells to be as represented as to quality and germination. All our seeds are tested and nothing that does not reach a high standard is distributed. In spite of this, we stand ready to replace or refund the money paid for any seeds sent out by us which upon arrival are not entirely satisfactory. We do not insure a crop from seeds purchased, either as to description, productiveness or any other matter, because of the many factors which influence a crop and which are entirely beyond our control, and acceptance of the seed will be interpreted as an acceptance of these conditions by the buyer. All sales are, therefore, based on this understanding, and it is further understood that in no case shall the liability of the company exceed the price paid for seed.



HARDY ALFALFA

"There is more money in Alfalfa and Corn for livestock than in any single or combination of crops in the world." Prof. W. A. Wheeler, U. S. Department of Agriculture.

Crop Insurance

THE TIME TO THINK ABOUT ALFALFA is before you plant. No one can tell by merely looking at seed whether it is suitable for our climate or not or whether it is one of the hardy varieties. More than half the failures are caused by sowing seed not suited to the locality. Hardy Alfalfa grown in the Black Hills of South Dakota, Wyoming, Montana or Nebraska under dry land conditions will withstand the rigors of any climate. The use of seed grown where temperatures range from 30 degrees below zero to 115 degrees above, is surely the best crop insurance one can buy.

WE ARE PIONEERS in the movement to sell seeds of "Known Origin." Our stock records and all our purchases are inspected and supervised by the United States Department of Agriculture, consequently every bag of Disco Alfalfa carries with it a Verified Origin Certificate. The Verified Origin tag is distinctive from address tags or any others, being printed in Red and Blue on a White ground, with Red, White and Blue bars across one side.



VERIFIED-ORIGIN SEED CERTIFICATE ISSUED BY AUTHORITY OF THE United States Department of Agriculture

This certifies that the origin (where grown) of this lot of seed has been verified by a Federal Seed Inspector, as indicated below, and that this covers ORIGIN ONLY—NOT VARIETY, QUALITY, PURITY, or GERMINATION.

Kind of Seed.....Lot No.....
Where grown.....

DAKOTA IMPROVED SEED CO.
Mitchell, South Dakota

THIS IS YOUR PROTECTION. Do not accept Alfalfa which does not carry with it the Verified Origin Tag. Do not be misled by cheaper substitutes or that "something just as good." Disco tags cover that section which produces the hardiest Alfalfa seed in the United States. As a further safeguard for your protection and our own, every bag of genuine Disco Alfalfa will be sealed by us. The seal bearing the famous "Disco Brand," our registered trade-mark.

STATE SEALED AND CERTIFIED SEED. This seed of established certified origin is produced by the most successful and dependable growers of Alfalfa. The entire process being under state supervision from planting time until harvest when the seed saved is sealed. Cleaning operations are then checked and supervised by Crop Improvement Association inspectors; finally the seed is graded (either Blue, White or Yellow Tag, as the case may be), tagged, and sealed by the association, in 2½ bushel (150 lbs.) or in 1 bushel (60 lbs.) lots. The South Dakota Crop Improvement Association has an inspector resident in Mitchell, consequently we are able to make shipment of any number of pounds, the inspector being available to open and re-seal the bags containing any quantity desired. In buying State Sealed Seed be careful to examine the seals and tags. All Alfalfa carrying Blue Tags is not necessarily State Sealed. Don't be misled.

Don't gamble your entire year's earnings for a few cents per pound seed. Keep away from the Seed Bootleggers. Avoid back fence trading. Play safe, use Disco Brands. This is real Crop Insurance.



Dakota Improved



Seed Company



Disco**HARDY ALFALFA**

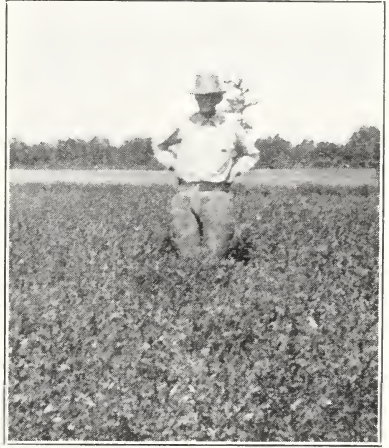
Alfalfa may be grown in practically every state in the Union. Progressive farmers everywhere appreciate the wonderful possibilities of this great legume. As a hay it is unequaled as dry feed, almost a balanced ration. For pasture, all stock thrive upon it, wonderful for dairy cows, hogs do well on it even as a sole feed. Horses and sheep rapidly improve upon such pasture. As a soil builder it stands out alone, increasing the productivity of the soil beyond conception, adding that most valuable element Nitrogen for the benefit of subsequent crops.

Alfalfa is not difficult to grow. The essentials are: Firstly and mainly the suitability and reliability of the seed, this is absolutely necessary. Seed unadapted for your climate is simply a waste of money. A deep, fertile, well drained soil, rich in lime and reasonably free from weeds. Young Alfalfa plants require soil to be in excellent tilth at planting time, seed bed fine on top but thoroughly settled.

Study your conditions and try it. Write for our free booklet, "Growing Alfalfa Successfully." Don't start experimenting with Alfalfa, we've done that for you. Tell us all about any difficulties you may have encountered. Nothing pleases us better than to be of any help. Letters from our farmer friends form the most interesting part of our mail.

We have all cause to remember the devastating drought we experienced in South Dakota during the summer of 1930, this to be followed in 1931 by even more intensive and prolonged heat makes one wonder how on earth any plant life could survive, and yet our Hardy Alfalfa stood up well.

The adjoining photograph, taken on the farm of one of our customers in August, 1931, proves beyond all possible doubt the vitality and marvelous drought resisting qualities of Disco Alfalfa, which have become famous all over the world.

**REAL MONEY MAKERS**

Varieties that have Stood the Test

GRIMM. The history of the Grimm Alfalfa is a very pretty story.

Some sixty years ago Wendelin Grimm and his wife were immigrants in this country from Germany. In their fatherland Mr. Grimm had been growing Alfalfa and realized the vast importance of the crop. When they started out in their search for a new home they carried with them some twenty pounds of the famous Alfalfa seed. This they planted at their new home in Carver County, Minnesota.

There were not a few mishaps and difficulties met with, but Mr. Grimm, being a very thorough and careful man, succeeded in mastering these difficulties. He found the soil condition different from his former home, as well as different weather conditions.

These conditions had a great deal to do with the increased amount of difficulties he encountered when trying to establish his Alfalfa field. It was nip and tuck for several years, but after about eight or nine years he succeeded in getting his first real seed crop.

A few years later some of the common type of Alfalfa had worked its way into Minnesota, only to be entirely killed out three years out of five. By this time Mr. Grimm had his field of Alfalfa well established so the severe Winters and hot, dry Summers had no effect on it. This showed up the real worth of the hardy Grimm type.

DISCO BALTIC. A comparatively new variety of hardy Alfalfa, very similar to Grimm, and rapidly being established in the esteem of all growers.

In describing the Baltic Alfalfa, the authorities of the U. S. Department of Agriculture, Bulletin No. 757, have this to say: "While the Baltic differs slightly from the Grimm in some minor details, the two are so similar that it is seldom possible to distinguish one from the other. This variety is recommended for sections where the ordinary strains suffer considerable loss through Winter-killing. This includes practically the same territory to which the Grimm is adapted, that is, the New England States, the greater part of New York, Michigan, Wisconsin and Minnesota; the northern Great Plains States and the northern part of Pennsylvania, New Jersey, Ohio, Indiana, Illinois and Iowa. The quantity of Baltic seed produced in the United States is rather limited and precautions are necessary in purchasing it."

The Dakota Improved Seed Co. are the promoters and breeders of the Baltic Alfalfa. Therefore, when you place your order with them for this variety of Alfalfa, you can rest assured you will get the original **Disco-Baltic** Alfalfa seed.

Certificate guaranteeing genuineness of variety and pedigree of any alfalfa sold by us given on request with order

**Dakota Improved****Seed Company**

Disco HARDY ALFALFA

The Most Profitable Crop on the Farm At the Lowest Prices in Years

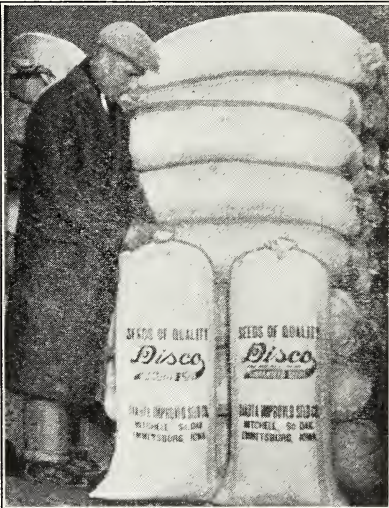
Facts emphasized by Dr. D. W. Robertson at a recent inspection concerning the Hardy Grimm, Cossack and Baltic varieties at the Colorado Agricultural College Experiment Station farm at Fort Collins, Colo.

1. They resisted winter killing to a much greater extent than common Alfalfa.
2. Hardy varieties yielded one ton more per acre than common Alfalfa during the first year's test.
3. They also resisted injury by late spring frosts to a much greater extent than common Alfalfa. Such frosts seriously reduce the tonnage of the first cutting.

All Disco Hardy Alfalfas are Grown in the Black Hills of South Dakota, Wyoming and Nebraska

Under Dry Land Conditions

You Can't Afford to Take Any Risk Play Safe!



Disco Registered Grimm and Cossack Alfalfas being officially sealed by the South Dakota Crop Improvement Association Inspector.

COSSACK. We believe Cossack is a hardy variety, and suited to the northern sections, not any harder than Baltic or Grimm, but there may be districts where it would excel. We consistently refused to recommend it to our customers while it was being sold at what we considered exorbitant prices, but now that seed is becoming more plentiful, and consequently more moderate in price, we have provided ourselves with some excellent seed, guaranteed to be the true variety, and we recommend a trial.

DISCO GRIMM 19A. The **DISCO 19A** is a special selection from the Grimm that excels its parent plant in many ways.

From the hundreds of individual trials carried on in our Alfalfa nursery there were selected plants which stood out distinctly as being heavy seeders, erect and strong in habit of growth, and producing many leafy branches. Plants with a large productive crown, underlaid with a strong and spreading or branch root system. By special selection of this type of plant we have developed a worth while pedigreed stock of **DISCO 19A**, an Alfalfa strain with a known parentage.

This pedigreed selection from the famous Grimm Alfalfa has probably been tested at more experiment stations in a greater number of states and over a wider area than any other strictly pedigreed Alfalfa tracing back to any individual plant selection.

From a large percentage of these trials we have had full reports on **DISCO 19A**, and other Alfalfas with which it has been tested. So far the reports received place **DISCO 19A** among the leaders for hardiness or production of hay or seed.

The demand for this extra hardy and prolific strain of Alfalfa is rapidly increasing. We have a limited stock of seed from this excellent pedigreed strain. It is going to move rapidly. Get your order in early for what you need.

DISCO BALTIC No. 11C from the Baltic has proven itself to be the hardiest of the hardy. This strain is a revelation in perfect and hardy Alfalfa. It is drought resistant to a marked degree. Recovers quickly after cutting. An exceptionally large and free stooling plant yielding an abundance of leafy hay. For seed production it has a record of its own. On one acre where **DISCO BALTIC 11C** was seeded in rows three feet apart it produced two hundred an eighty-six pounds of seed.

Certificate guaranteeing genuineness of variety and pedigree of any alfalfa sold by us given on request with order



Dakota Improved



Seed Company



Disco HARDY ALFALFA

Alfalfa Is Our Specialty

REGISTERED DISCO No. 28. This has proved the most universally popular and useful of our Registered Stocks. The testimonials we have received regarding it have been very satisfactory indeed. It has resisted winter-killing in the northern sections, where freezing and thawing are prevalent, and in other sections, where the water level is somewhat high, it has continued to grow where the common tap-root type has completely disappeared. It has, also, owing to its bushy habit of growth, yielded a heavier crop of hay than the common variety.

DAKOTA No. 12. A native of the Black Hills district, giving excellent results to many of our customers.

BLACK HILLS COMMON—Grown in the Black Hills of Wyoming at an altitude of 4,000 feet and upwards, or Northern Nebraska under dry land conditions. On new land. Seed of exceptionally high purity. We cannot recommend Northwestern too highly. **Low prices this year make seed of this quality a "real buy."**

LADAK—A recent introduction from mountains of Northern India. Claimed to be somewhat harder than older varieties where the rainfall is limited and just as hardy under favorable moisture conditions. First cutting of Ladak is usually heavier than that of the older strains, but recovers rather slowly after cutting so that second crop is likely to fall below that of other varieties. Ladak hay, in some cases at least, seems to be of a finer quality and the plant has also shown evidence of being capable of producing heavier crops of seed.



DROUGHT DEFIED!—An actual photograph of one of our customers bailing one of his Alfalfa cuttings in 1931. **Disco Drought Resisting Alfalfa.**

Inoculate

ALL LEGUMES

Alfalfa, All Clovers, Soy Beans, Cow Peas, Vetch, Peas, Beans, Peanuts with

All Legume Germs Are Perishable

To Protect Your NITRAGIN Cans Stamped With Expiration Date



Legume Germs Die Rapidly When Dried

Authorities Recommend Inoculating With Water

THE ORIGINAL LEGUME INOCULATOR

Guaranteed Fresh Each Year—Leads in High Germ Count

For profitable results, Agricultural Colleges advise inoculation for all legume seed, because it pays well in producing larger quality yields. NITRAGIN inoculated legumes draw their nitrogen from the air—not the soil—with billions of fresh, efficient nitrogen-gathering germs. It's fresh each year—it's DATED, and leads in High Legume Germ Count. Quality inoculation is the cheapest legume crop insurance known.

Mixing Nitragin with Seed

Legume Germs die rapidly when dried. NITRAGIN, containing between 30%—40% moisture, will readily stick to the seed without adding water, and give inoculation. However, for best results, the preferred practice, recommended by The Nitragin Company and Agricultural Authorities is to use water when mixing legume culture with seed.

NITRAGIN PRICES

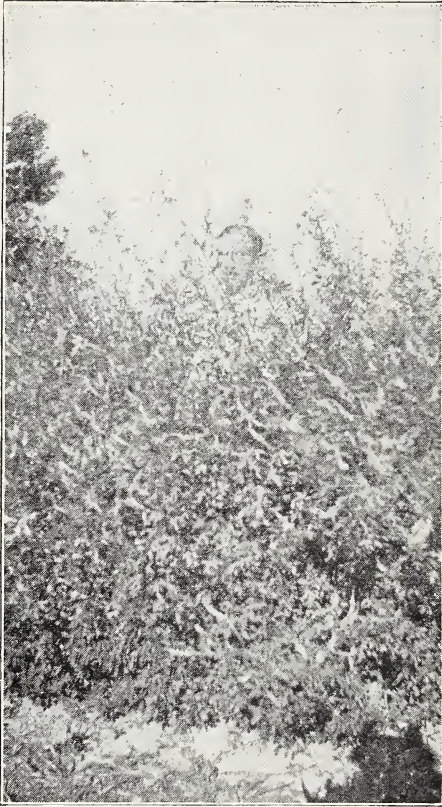
Alfalfa, All Clovers		Peas, Vetch, Beans, Austrian Winter Peas		Soy Beans and Cow Peas	
Size	Price	Size	Price	Size	Price
1/4 bu.....	\$.40	1/2 bu.....	\$.40	1 bu.....	\$.40
1/2 bu.....	.60	1 bu.....	.60	2 bu.....	.70
1 bu.....	1.00	*1 1/4 bu....	.90	5 bu.....	1.50
5 bu.....	4.75	3 1/2 bu....	1.80	10 bu.....	2.50
<i>When ordering always specify kind of seed</i>		5 bu.....	2.50	<i>When ordering always specify kind of seed</i>	
		*Also called "100 lb. size."			

Garden Nitragin—Garden Size—Peas, Beans, Sweet Peas

Inoculates from 1 ounce to 8 lbs. seed. Price \$25
IMPORTANT: When ordering NITRAGIN, always be sure to state kind of legume seed you wish to inoculate.
Nitragin Has Served the American Farmer Since 1898



Disco Sweet Clover



Sweet Clover

Selected—Recleaned—Scarified Tested

Sweet Clover Puts Into the Ground What
Other Crops Take Out

THE CHEAPEST MEANS OF BUILDING
UP YOUR FARM TODAY

100 Lbs. Nitrogen Free!

"Sweet Clover plowed down about a year after seeding will add approximately 100 lbs. Nitrogen per acre."—Extension Service, Iowa State College, April, 1931.

100 lbs. Nitrogen, valued at about \$9.00, is something to think about when considering yields.

Sweet Clover gives quick returns. Pasture it heavy the same year as you sow—almost impossible to kill it out. No need to wait two years to get the benefits; you might try sowing it in spring; pasture it or use it as hay crop in fall. Plow it under next spring before planting corn. That's quick! but the results are amazing—increases yields of corn 20 to 25 bushels per acre.

Make your acres more valuable, reduce the feeding costs of livestock. Try this wonder crop this year.

This Means More Money FOR YOU

WHITE BLOSSOM (*Mellilotus alba*)—This is by far the most popular biennial variety. Under ideal conditions, it will sometimes make a growth of 48 inches the first year, its usual growth being 18 to 30 inches. It stores up a tremendous quantity of reserve food in its deep tap root, which enables the plant to make a rapid and vigorous growth early the following spring, and will, if permitted, make a growth of from 5 to 10 feet. In growing for hay we recommend cutting when it is 2 to 2½ feet high. Set the sickle bar of the mower as high as possible as the new growth comes from the stem instead of the crown, as in Alfalfa.

YELLOW BLOSSOM (*Mellilotus officinalis*)—This variety is a biennial also, growing a hay crop the first year, flowers, bears seed and dies at the end of the second year. Stems are finer, inclined to be less "woody" and have a larger proportion of leaves and fine branches, which naturally makes it a better pasture and some farmers prefer it as a hay crop, although it makes less tonnage per acre than the White Blossom variety.

GRUNDY COUNTY, EARLY WHITE, DWARF WHITE, CRYSTAL WHITE—Under these various titles, a dwarf growing type of the biennial white variety has been distributed during the past few years. It is earlier, grows to a medium height, does not require clipping, matures its seed earlier and more uniform; is consequently easier handled. The seed we offer can be traced directly to the original stock produced in Grundy County, Illinois, and as the seed is very similar in appearance to the common variety, this is the only way you can be sure of getting the genuine article.

HUBAM—Annual White Blossom. Where it is considered desirable to have the crop make its growth, flower, form seed and die in one year, Hubam has advantages. It certainly has a strong appeal to the honey producer, greatly increasing the available bee pasture.

Off Grade Alfalfas and Clovers

Alfalfa and Sweet Clover are our specialties in the legume family. We reclean and ship a great many carloads in a season. In view of this, we naturally have, from time to time, lots of both Alfalfa and Sweet Clover which are not quite good enough for our regular Brands, some are off color, some contain a little pigeon grass, and some a trace of Gumbo. We can give you snaps in these lots. Write us telling how much you want and your requirements, and we will mail you samples and our best prices.



Dakota Improved



Seed Company



Disco CLOVERS

Highest Grade, Thoroughly Recleaned

OUR CUSTOMERS DEMAND THE BEST—AND GET IT

WE ARE PROUD OF OUR CLOVERS. OUR LOCATION, OUR EXPERIENCE AND FACILITIES ACTUALLY SAVES YOU MONEY AND GIVES YOU BETTER SEED.

MEDIUM RED CLOVER—Regarded as the most valuable of the Clover family; a dependable all-round variety. Not only does it produce a heavy weight per acre, but richness of the roots in nitrogen gathering bacteria means added fertility to the soil.

MAMMOTH RED CLOVER—Coarser and stronger growing than the Medium Red. Well adapted for hay, if cut early, but is mostly used as pasture and for fertilizing.

ALSIKE OR SWEDISH CLOVER—Produces the finest quality of Clover hay; unusually hardy, and well adapted for pasture. Thrives best on low and moist lands and is particularly well adapted for mixing with Timothy, as it will grow under similar conditions and can be cured well if grown in this manner.

WHITE OR DUTCH CLOVER—A dwarf, close growing variety, in demand for lawns.

RATE OF SEEDING CLOVER. Sow 10 to 15 pounds of Medium Red Mammoth and Sweet Clovers and 8 to 12 pounds of Alsike and White Clover to the acre. On soils that have never grown these Clovers we advocate the use of Nitragin for inoculating the seed.



Disco Selected Grass Seed



A W N L E S S BROME GRASS (Bromus inermis)

—A native of Russia. Specially adapted to a cold climate. Its value to farmers cannot be overestimated in dry regions, being one of the deepest rooting grasses in cultivation, thoroughly permanent and growing with wonderful rapidity, producing heavy crops. Once established it becomes impervious to severe Spring or Fall frosts. Growth starting very early in Spring before native

grasses show signs of life and remains green well into November. The quality of the hay is excellent; fully equal to that of Timothy in palatability and nutritive qualities. Chemical analysis shows it to be rich in flesh forming ingredients. Awnless Brome supplies a long felt want of early Spring and late Fall pastures. Sow broadcast at rate of 20 to 25 lbs. per acre.

REED CANARY GRASS fills a definite need for a high yielding nutritious hay and pasture crop on low lying, poorly drained areas, which have been bringing practically no returns. Specially adapted to wet mineral lands, subject to overflow along river banks. When high lands become dry in July and August this grass on the lowlands furnishes large amounts of pasturage. Lengthen your grazing season—convert valueless mucky lands to profitable pastures. Broadcast 6 pounds, drill 3 pounds per acre.

TIMOTHY (Phleum pratense)—One of the

most useful and valuable grasses; of wonderful nutritious value and unusually productive; the seeds being very small and produced in great abundance, makes it the most economical of grasses; extremely hardy; seldom winter-kills and stands heat and cold equally well. Sow 10 to 12 pounds to the acre.

MEADOW FESCUE or ENGLISH BLUE GRASS (Festuca pratensis)—A very useful grass for permanent pasture; makes excellent hay. Sow 15 pounds to the acre.

RED TOP, SOLID SEED (Agrostis vulgaris)—Also known as *Herd's Grass*, grows most luxuriantly on moist, rich soils; very robust; produces strong, thick roots and makes a firm sod; very desirable for pasture purposes. Will succeed well on alkali land where other grasses fail. Sow 10 to 12 pounds of solid seed per acre.

KENTUCKY BLUE GRASS (Poa pratensis)—Also known as "*June Grass*." Produces an excellent pasture of beautiful verdant green and is particularly adapted for seeding on a pasture field surrounding the home where a good sod of pleasing appearance is desirable. Sow from 30 to 40 pounds per acre.

ORCHARD GRASS OR COCKSFOOT (Dactylis glomerata)—A very useful grass either sown alone or combined with other grasses for permanent pasture. One of the earliest grasses in the Spring; is unusually productive.

DISCO PERMANENT PASTURE MIXTURES—a. For high and dry land. b. For good rich land, neither too wet nor too dry. Blends of the most desirable grasses in proper proportions with the object of insuring not only abundant pasture but maintaining same for the longest possible time. Seed 20 pounds per acre.

TIMOTHY AND ALSIKE MIXED—The mixture we offer of these two desirable grasses is blended in such proportions as years of experience have shown to give the most desirable combination.

TIMOTHY AND MEDIUM RED CLOVER MIXED—This also makes a very useful mixture for temporary meadow, and gives a heavy crop of excellent hay of high feeding value.



Dakota Improved



Seed Company



Disco Pedigreed Seed Corn

Dakota Grown, Early, Hardy, Well Matured

Located as we are in the best Seed Corn growing district of South Dakota, with our own spacious and up-to-date drying racks and bins and latest type of shelling and grading machinery, giving personal attention to our growing stocks, we are ideally situated to give Seed Corn Service. Our stocks being grown under rigorous climatic conditions, yet rarely being affected by frost, enables us to offer varieties of Seed Corn well adapted to South Dakota, North Dakota, Montana, Minnesota, Northern Nebraska, Northern Iowa, Northern Illinois, Wyoming, Wisconsin, Michigan, the Northeastern States and Canada. Like all our seed, Corn is sold on our absolute money-back guarantee. Early frosts last Fall coupled with high moisture content seriously affected the germination of seed corn which was not amply safeguarded. We guarantee a germination of 90% or better and allow you 15 days in which to test.

HAVE A LOOK AT THIS PICTURE



SEE EVERY EAR
HUNG SEPA-
RATELY IN THE
WIRE FRAMES.

NOT HASTILY
KILN DRIED,
BUT AS NATURE
INTENDED BY A
MILD CONTIN-
UOUS CURRENT
OF FRESH
WARM AIR.

PHOTOGRAPH
SHOWS ONE OF
OUR DRYING
ROOMS.

**4,000 Bushels Seed Corn
Bred Right
Selected Right
Cared for Right**

*Only the best is good
enough for DISCO
IT'S GOOD ISN'T IT?*

Our policy has always been conservative in regard to the variety of Corn to plant. We believe it is wiser to stick to a pedigreed stock of a variety that you can depend upon to ripen and "make corn" rather than take a long chance on some later ripening, heavier yielding sort and be caught. We recognize that there are some years that you "get by," but if the average of a period of years is taken we are convinced that by following our advice you will be ahead.

DISCO SPECIAL—Yellow Dent. The very best 90-day Yellow Dent at present on the market. Year by year it enhances its popularity, and the number of its users is extended so that it is grown with marked success and satisfaction all over the Northwest. It was developed by us more particularly because of its hardy nature, while at the same time it gives a good ear with a very high shelling percentage. The ears will average $8\frac{1}{2}$ inches in length, with a girth of 9 inches, with from sixteen to eighteen rows well carried out at butt and tip. The color is a rich yellow and the grain is unusually deep, of smooth, handsome appearance, cob very small. The ears are well formed, uniform in size and of moderately strong shank. It has a very leafy growth and attains a height of from $7\frac{1}{2}$ to 8 feet, and usually yielding from 40 to 60 bushels per acre. **Disco Special** is also well adapted for drilling in for use for ensilage or fodder. We strongly recommend this. In a test plot at Howard, S. D., Disco Special yielded 54.1 bushels per acre.



Dakota Improved



Seed Company



Disco Pedigreed Seed Corn

Dakota Grown, Early, Hardy, Well Matured

MORE CORN OR MORE COBS—WHICH?

Secure a Change of Seed Corn This Year at a Moderate Cost



GOLDEN KING—Yellow Dent—Described by the raiser as "The Wonder Corn of Northern Iowa. Since 1923 this Corn has consistently outyielded all other varieties entered in competitive yield tests.

The average ear is 8 to 9 inches long, has 16 rows, kernels blocky and full at tips with medium smooth dent.

The cob is small, woody and free from moisture. Shanks small, medium size and height and stand well under normal conditions. Easy to husk. Matures in about 100 days. Average shelling percentage 85% or over. In the yield test at Canton, South Dakota, this variety yielded 66.8 bushels per acre. Our stock was grown right here at Mitchell from seed obtained direct from the raiser and grower.

FULTON YELLOW DENT—A variety well adapted to an area of South Dakota somewhat farther North than that occupied by Wimple's Yellow Dent. Selected and named at Fulton in Hanson county, it has become widely established in the central counties and as far North as Spink county.

Typical ears are about 8 inches in length by 5 to 6½ inches in circumference. The ears taper characteristically more rapidly towards the tops. Cobs deep red. Fourteen to sixteen rows of kernels, medium rough and with considerable depth.

Golden King

NORTHWESTERN RED DENT—Has now been on the market for 35 years and is still gaining in popularity. For the Northwestern States and Canada, we believe it is unequalled. It is really a hybrid type, being a cross between an early Yellow Dent and a flint variety. Many instances are on record where this Corn has matured in 80 days, but even where it is grown for the silo it will mature Corn sufficient to greatly increase its value for silage purposes. Usually grows from 6 to 7 feet. The ears are well formed, averaging eight inches in length with 14 rows of kernels. Particularly well adapted for hogging off, and if Rape is sown between rows at the last cultivation it gives splendid returns.

GOLDEN JEWEL—Claimed to be the greatest prize winning Yellow Dent Corn ever introduced. It is especially adapted to South Dakota, Iowa and Wisconsin, producing a handsome compact ear 8 to 10 inches long, with 16 to 20 rows of deep square shoulder kernels, rough and compact on a small cob.

It matures in 95 to 100 days. It is of stalky growth, very leafy and vigorous, about 7 feet high. 90 bushels per acre have not been uncommon with the Golden Jewel.

WIMPLES YELLOW DENT—100 to 110 days. Very popular in many districts where it seems to excel all others and we recommend it where other varieties already tried have not been entirely satisfactory. It belongs to the early type of Yellow Dent, especially adapted for the Northwest. The size of the ear is surprising, averaging from 9 to 9½ inches in length and from 6 to 6½ inches in girth, containing from 16 to 18 rows. One of the best short season varieties. Good drought resister.

MINNESOTA 13 YELLOW DENT—As its name implies, this variety was originally introduced by the Minnesota Agricultural College, St. Paul, Minnesota. It matures in 90 days, grows from six to eight feet high. The ears carry from 14 to 16 rows of kernels and average seven to nine inches long, six to seven inches in circumference. Kernels are fairly dark yellow, of medium depth. Cob is red. Minnesota 13 is used by many of our customers for hogging off, for which purpose it is well adapted. Is very popular as a general purpose variety in Minnesota, and is also well adapted for northern half of South Dakota, northern half of Wisconsin, and is useful in many parts of Montana and North Dakota.



Dakota Improved



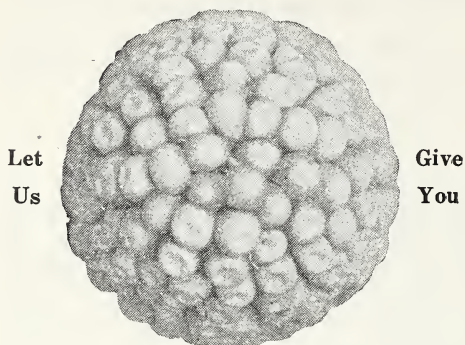
Seed Company



Disco Pedigreed Seed Corn

Get a copy of our Booklet "Corn Culture in the Northwest"

FREE WITH ORDERS ON REQUEST



Let
Us

Give
You

A Good Tip

DISCO 90-DAY WHITE DENT—Rapidly becoming the most popular white variety on the market, is unusually early ripening, and a heavy yielder. Admirably adapted to northern sections of the country. The stalks grow to an average height of about eight feet and ears shoot out about three and one-half feet from the ground. We believe this to be the very best white dent on the market, and aside from its value for production of Corn it is especially valuable for silage purposes.

SILVER KING WHITE DENT—A very early white dent corn maturing but a few days later than our 90 Day White, but produces a larger ear and deeper kernel. Recommended for Southern South Dakota, Southern Minnesota, Michigan, Wisconsin and the Eastern States. Produces 16 rows of deep-grained kernels. Ears well filled, medium size, about 8 or 9 inches long. Does well in either wet or dry weather.

FLINT VARIETIES

The flint type of Corn is very popular in the Northern States and Canada, or in fact anywhere earliness is demanded or where the crop is used for ensilage or fodder. The varieties we offer are early, hardy types.

GEHU YELLOW FLINT—This excellent variety of early flint corn has not, so far, been appreciated by corn growers as it ought to be. In a year like this its value can hardly be estimated. Think of it, matured corn can be picked in seventy days from date of planting and with favorable weather you could put the hogs into it in sixty days from planting time. It is not a heavy yielder, but it is not by any means a freak. Its feeding qualities are of the highest. It is very leafy, producing an enormous amount of fodder with the minimum of stalk. It is wonderfully drought, hail and frost resistant. Gehu produces a lemon yellow colored ear, mostly twelve rowed, from 7 to 8 inches long. If your corn crop was short and you are likely to need feed before you can expect to pick corn from your regular crop, then by all means put in an acreage of Gehu. It will give you early feed that will be of great value to you.

Insist on obtaining definite particulars as to variety, origin, purity, germination with purchases. Reliable seedsmen are always pleased to give them. **Don't be misled by vague newspaper advertisements.** You will court disaster. Remember, "the sweetness of low price never equals the bitterness of low quality."

RAINBOW FLINT—An unusually early variety, the kernels being all colors of the rainbow. Very popular for late planting. Ears are much larger than Gehu, some over 12 inches long, and it is a corn of good quality and yields well.

SQUAW—Raised originally by the Indians, hence its name, of true Flint type, various colors, very early. Excellent for hogging down.

WHITE FLINT—Pearly white, the ears have 8 to 10 rows and are 8 to 12 inches long. Stalk grows 4 to 6 feet high. Ears borne from 8 to 20 inches from the ground. A useful variety for hogging down.

SWEET CORN FODDER—One of the best fodder crops that is generally overlooked by the dairymen and growers of livestock. It is claimed by dairy farmers that the sweet corn fodder will increase production greatly and keep the animals in the best of condition. It is so sweet and palatable that the cattle eat both stalks and leaves. For best results plant thicker than ordinary field corn or drill in rows allowing about ten inches apart for each plant.

CORN FOR SILO AND SHOCK

Have you tried butts and tips for forage purposes? The butts and tips which we take off our regular stocks of pedigreed corn, after being properly hung and cured, make an excellent planting for silo and fodder purposes when drilled in. They yield quite as heavily as graded corn but of course at only a fraction of the cost. We heartily recommend these to our customers, but as there is always quite a run on the limited quantities we suggest early ordering.

SEMESAN JR.

The Dust Treatment for
Seed Corn



Cheap—Simple—Effective
4 oz. Tin, 50c; 1 lb. Tin, \$1.75
5 lb. Tin, \$8.00; 25 lb. Pail,
\$31.25

100 lb. Drum, \$120.00
300 lb. Drum, \$345.00

NOT PREPAID



Dakota Improved



Seed Company



Disco Forage and Soiling Crops

At Slashed Prices

Sudan Grass

GOOD PASTURE IN 30 DAYS—REMAINS GREEN WHEN OTHER PASTURES FAIL— It will produce at least two cuttings of fine stemmed nutritious hay the same year. Will yield from three to five tons per acre. Readily eaten by all kinds of stock. One of the best summer pastures for dairy cattle. (57 head of Holstein, Guernsey and Jersey cows in the dairy herd of Glover and Capps, Liberty, Missouri increased fifty gallons per day in their milk flow after having been turned on a field of five weeks old Sudan Grass.)

RATE OF SEEDING

Broadcast 20 to 25 pounds and if drilled 15 to 20 pounds to the acre. Do not sow too early, it will not stand frost. Leave it until after corn planting and you will be better off.

We recommend your asking for Farmers Bulletin 1126 or Bureau of Plant Industry Circular No. 125, U. S. Department of Agriculture, Washington, D. C.

Canes

EARLY AMBER FODDER—This earliest of all fodder cane is becoming more in demand every year. Whereas we formerly handled a few thousand pounds, we now move carlots. It is particularly adapted to the Northwest, and succeeds unusually well. Sow broadcast at the rate of 40 to 60 pounds per acre.

AMBER SORGHUM—The earliest, richest, and best Sorghum Cane grown in the Northwest for making syrup. Drill in rows 3½ feet apart at the rate of five to eight pounds per acre.

Feterita

Another Sorghum Family grain introduced by the U. S. Department of Agriculture, from Africa. It is a quite popular high yielding grain crop relished by all live stock, and especially recommended for poultry. It is very drought resisting, early and immune from the attacks of insect pests. Grown for grain, sows in rows 3½ feet apart, 5 to 8 pounds per acre and cultivate. Grown for fodder broadcast 25 pounds per acre.

Kaffir Corn

Makes excellent fodder, either green or cured. Stalks grow 4 to 5 feet high, are very leafy and relished by all live stock. Grown for seed, yields 35 to 50 bushels per acre. Grown for grain sow in rows 3 feet apart, 5 to 8 pounds to the acre. Grown for fodder broadcast 25 pounds to the acre.

Buckwheat

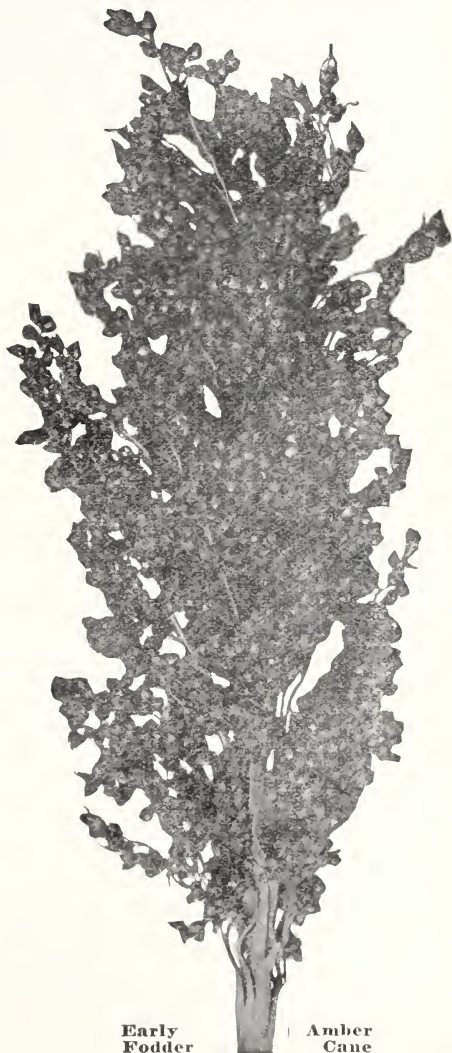
An excellent catch-crop, develops very rapidly, useful either for hay or if allowed to mature gives an excellent grain crop for poultry feeding and household use.

JAPANESE—The best variety for the Northwest. Produces its seeds earlier, resists drought and is very dependable.

SILVER HULL—While not so early as Japanese, is preferred by millers, as it makes whiter, better and more nutritious flour. A nice variety where bees are kept. Broadcast 40 pounds per acre.

Sunflower

RUSSIAN GIANT—The value of this plant has been demonstrated with unusual emphasis during the past few years and it is now being used extensively as far north as Edmonton in the Canadian West. Used in the silo either alone or in conjunction with corn. It provides excellent feed and gives a heavier weight per acre in the North than can usually be obtained by planting of corn. Aside from its value in the silo, for poultry feeding, it is second to none. Dry stalks make excellent kindling. Plant at the rate of 10 pounds per acre.



Early
Fodder

Amber
Cane



Dakota Improved



Seed Company



Disco Forage and Soiling Crops

RAPE DWARF ESSEX



THE IDEAL CATCH CROP

QUICK GROWTH—HEAVY YIELDS—CHEAP SEEDING

There is probably no fodder crop giving greater returns on account of its remarkable feeding value. Rape pasture is available in six weeks after sowing, providing an abundance of green feed from early summer till frost and later. Sown as a special hog pasture, seeding two or three small plots, alternating stock from one plot to another, fresh pasture is always available. After being grazed it will grow up again—but do not graze too closely.

Rape may be sown almost at any time. It may be sown with Spring grain to provide fall pasture after the grain is cut, or it may be sown just before the last cultivation of corn and so increase the yield of feed per acre. It may be used alone, with fall Rye, or any small grain. The cost of seeding is so low and so small a quantity is required we do not see how any farmer can afford to raise hogs or sheep without Rape. Whether sown alone or with grain, **Rape is about the finest investment in Agriculture.**

Rate of seeding, when sown alone from 5 to 6 pounds are recommended. With small grain or in drills 3 to 4 pounds.

Field Peas

One of the best annual legume crops for the Northwest as the cool temperature at night just seems to suit them and they make their best growth under such conditions. If sown with oats they make excellent feed and are more easily harvested and if necessary can be separated in cleaning.

CANADIAN FIELD—Grow to a height of four feet and will yield from 30 to 40 bushels per acre.

Field Beans

Grow these for winter use. All our seed is Dakota grown, perfectly acclimated and will grow quickly and mature rapidly.

GREAT NORTHERN—Originally grown by the Indians, very hardy and early; much improved by selection, and we consider them the best quality White Bean in cultivation.

SMALL WHITE NAVY—Local grown so that their earliness is assured. Skin very thin and Bean of excellent flavor.

Soy or Soja Beans

Soy Beans are no longer an experiment. As a soiling crop for cows, no crop surpasses them for producing a high grade milk. In 1930 "W. B. Haire, Bulla Springs, Texas, obtained an increase of 25 quarts of milk daily from 17 cows when he began feeding soy bean hay and at the same time reduced his feed costs 10c per head per day."

In 1931 Wheat and Soy Beans grown on four and one-half acres of land netted H. H. Atkins of Wake County, N. C., a profit of \$246.50.

Hogs make extraordinary rapid growth when turned into a patch of soy beans. You will be surprised to see how all stock love this threshed hay and how they thrive on it. We recommend planting Soy Beans with corn, especially if you intend to use your corn in the silo, or you may use the wonderful crop for hogging off or stalk pasture.

Planted with corn, 4 to 6 pounds per acre. Sown broadcast at the rate of 60 pounds per acre, or drilled alone 30 to 40 pounds per acre.

MANCHU—This variety was imported from Northern Manchuria and has proven to be quite an acquisition for use in the Northern States, both for seed and forage. The plants are stout and very erect, a heavy yielder, and it matures in about 110 days.

ILLINI—A new variety of Soy Beans developed at the State Experiment Station, Illinois. Yields a little better than most other varieties and maturing about seven days earlier than Manchu. We recommend the sowing of Illini as a trial but maintaining Manchu as a main crop.



Dakota Improved



Seed Company



Disco Millets



German Millet

**You can make no mistake
in planting Millet for a
hay crop**

**Quick growing—prolific
Smotherers weeds
May be sown late
Great drought resister
Thrives in real hot weather
Wonderful feeding value
Surest quick growing Catch Crop**

**When the opportunity arises use
MILLET. It costs so little
this year.**

JAPANESE—Justly called Billion Dollar Grass. Will grow from 6 to 9 feet high. Stands up remarkably well and yields enormous crops, over twenty tons per acre being easily obtained. The forage is tender, highly relished and in nutritive value appears to be about equal to the best Corn Fodder.

COMMON—Grows an exceptionally sweet and palatable hay. Will thrive on almost any soil; attains a height of from 4 to 5 feet and is unusually drought resistant, producing a fair crop on even poor soil. Sow broadcast 30 pounds per acre.

SIBERIAN—A very fine variety of Millet, also hailing from Russia. Unusually early, extremely hardy and withstands drought. The plant shows a remarkable stooling habit, as many as 30 to 40 stalks frequently grown from one seed. Use 30 to 45 pounds to the acre.

GOLDEN, LIBERTY or GERMAN—Under favorable conditions the Golden Millet will undoubtedly produce the heaviest yield of hay per acre. It grows very densely and is an excellent cleaning crop. Sow 30 pounds to the acre.

HOG or BROOM CORN—Can be used as hay or as a cleaning crop just the same as other Millets. It, however, yields an unusually heavy crop of seeds—from 60 to 70 bushels to the acre, and experiments at our Experiment Stations have shown that it is an excellent substitute for wheat. The seed will mature and be ready for cutting as a rule two months after date of seeding. For hay purposes use from 30 to 40 pounds and for seed from 8 to 12 pounds per acre.

PROSO—A large seeded white-grain variety. Very valuable for feeding stock and poultry. Makes a splendid catch crop and may be sown later, where other crops have failed or been drowned out. Quantity to sow: Same as hog millet.

EARLY FORTUNE—Of the same type as Hog or Broom Corn with the exception that the color of the seed is red, whereas the Hog or Broom corn variety is white. A good yielder, the seed being very valuable for either poultry or hog feeding, and it also yields a heavy weight of fodder. Quantity to sow: Same as hog millet.

Disco Improved Seed Grains

Ceres Wheat A wonderful new Wheat. Considered the best of any new varieties and the heaviest yielder in the Northwest. It is a bearded, hard, red spring wheat, stiff of straw and early. Over an average of four years grown in comparison with other varieties has exceeded all yields by 5 to 7 bushels per acre. Altogether Ceres is probably the best of Spring Wheats, particularly suited to Northwest and farmers interested in new and more profitable crops ought not fail to sow it. "Last year a 20 acre field of Ceres Wheat on the farm of Dan Connolly of Oliver County, North Dakota, yielded 600 bushels or 30 bushels per acre of 59 pound No. 1 dark Northern Wheat."



Market
Your Grain
Through
Live Stock
But Buy Seed
You Can Rely
Upon

PRICE NO
OBSTACLE THIS
YEAR

Marquis Wheat has been claimed the most satisfactory hard red Spring Wheat known. Eminently suited to the Northwest. Slender beardless heads. Kernels short and plump, dark red in color. It does not lodge, nor shatter easily. Extremely early. Practically immune to drought or early frosts.

Mindum Durum Wheat Developed by Minnesota Experiment Station. Highly rust resistant. Straw stands up well. Well filled heads, with large amber colored kernels. Hardy, early and heavy yielder.

Speltz or Emmer Thrives under most adverse conditions, being extremely drought and rust resistant. Feeding value superior to oats and only slightly less than corn.

Velvet Barley Will eventually replace most other varieties. Straw stiff, excellent yielder, disease resistant, easily handled.

Flax (N. D. Wilt-Resistant No. 114) Developed by North Dakota Experiment Station. Is both rust and wilt resistant. Highly popular in Dakotas and Northwest.

Buda (N. D. No. 119) A later development by North Dakota Experiment Station. Is considered more rust and wilt resistant than any other variety. Has the highest yield of a period of five years at Morris and Crookston Experiment Stations. Specially recommended for South Dakota and Montana.

Sugar Beets

742. **KLEIN WANZLEBEN**—It is not suitable for stock, but roots used in making sugar, and we recommend same for home use. Oz., 10c; ¼ lb., 15c; ½ lb., 25c; 1 lb., 45c, postpaid.

Sugar Beet or Half Sugar Mangel

740. **GIANT GREEN TOP WHITE**—A heavy cropper, much relished by stock. Easily harvested. Flesh tender and sweet, very solid and of fine texture. Oz., 10c; ¼ lb., 15c; ½ lb., 25c; 1 lb., 45c; postpaid.

741. **GIANT GREEN TOP ROSE**—Grows unusually large. Exceptional feeding value. Ideal for dairy stock. Oz., 10c; ¼ lb., 15c; ½ lb., 25c; 1 lb., 45c; postpaid.

Field Carrots

751. **LONG RED SURREY**—Although it is outyielded by the white carrot, the orange are most in favor for eating purposes. It is a long, heavy yielder, with thick crown, and very little core. It is smooth, sweet, tender, crisp, and mellow. Pkt., 5c; oz., 10c; ¼ lb., 25c; ½ lb., 40c; 1 lb., 75c, postpaid.

Ceresan A dust disinfectant for Wheat, Oats, Barley, other Cereals and Cotton. 1 lb. tin, 75c; 5 lb. tin, \$3.00; 25 lb. pail, \$12.50; 100 lb. drum, \$49.00; 300 lb. drum, \$144.00. Prices not postpaid.

Mangel Wurtzel

730. **GIANT YELLOW INTERMEDIATE or GATEPOST**—Grows to a great size, mostly above the ground, good quality and a heavy cropper. Oz., 10c; ¼ lb., 20c; ½ lb., 35c; 1 lb., 60c, postpaid.

732. **SELECT MAMMOTH or GIANT LONG RED**—The heaviest cropper in cultivation, and a very good feeding variety. Oz., 10c; ¼ lb. 20c; ½ lb. 35c; 1 lb., 60c, postpaid.

Purple Top Swede or Rutabagas

700. **MONARCH**—An early, heavy-cropper, oval shaped Rutabaga of fine quality. Best for early use. Pkt., 5c; oz., 10c; ¼ lb. 30c; ½ lb., 50c; 1 lb., 90c; 5 lbs., \$2.75, postpaid.

703. **BANGHOLM**—Hardy, round-shaped Swede, excellent cropper; good keeper. Pkt., 5c; oz., 10c; ¼ lb. 30c; ½ lb., 50c; 1 lb., 90c; 5 lbs., \$2.75, postpaid.



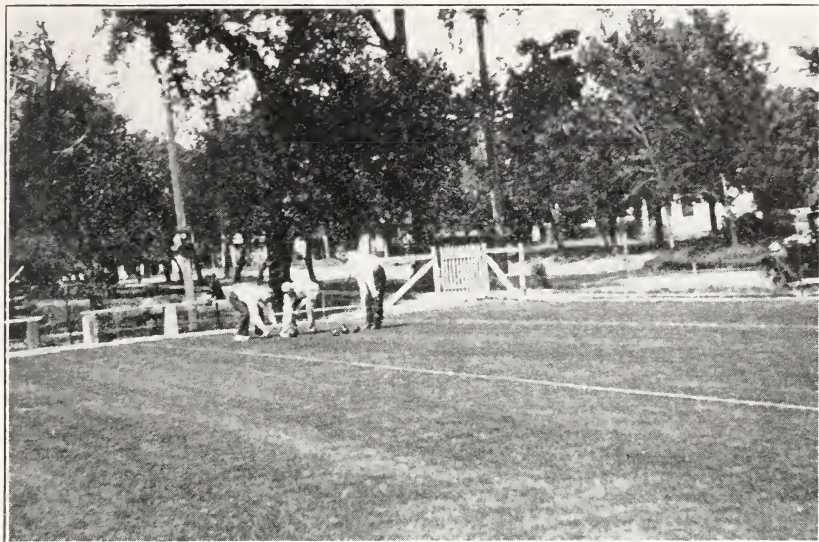
Dakota Improved



Seed Company



DISCO LAWN GRASS



Mitchell Lawn Bowling Club Green

This lawn was laid down just one year ago. Has stood up to the severe wear and tear of continuous playing all through the fierce heat and drying winds of summer 1931. Come over and see for yourself—talk it over with us—there is no secret about it. We will be delighted to help you build a lawn you will be proud of. It's easy—common sense, a little care and Disco Special Creeping Bent Grass Mixture. Not the usual "By guss—by gosh!"

HAVE YOUR SOIL PROPERLY PREPARED—FERTILIZE BEFORE SOWING

DISCO CREEPING BENT GRASS MIXTURE—This is composed of Agrostis varieties only. A mixture of those marvelous Bent Grasses which have revolutionized lawn making. Will produce a much finer textured turf than ordinary mixtures. The creeping character of these grasses causes them to "mat" and produce the soft luxuriant feel of an expensive rug. Require good soil, adequately fertilized, sunlight, moisture and average care. Sow at the rate of one pound per 250 square feet or 175 pounds per acre. **½ lb. 40c; 1 lb. 75c. Post or express paid.** Special quotations for larger quantities.

DISCO EVERGREEN MIXTURE—Long experience in the preparation of Lawn Mixtures has resulted in this now famous blend. Disco Evergreen represents the very finest scientific combination of dwarf and close growing grasses, producing a soft velvety turf in remarkably short time. Made up entirely from our own exclusive formula, blended in proportions we know to be just right for our rigorous climatic conditions. **½ lb. 20c; 1 lb. 35c; 3 lbs. \$1.00; 5 lbs. \$1.60.** Special prices for larger quantities.

GENUINE SEASIDE CREEPING BENT—Has many outstanding qualifications which favors it above all other varieties. Forms sod very quickly, spreads rapidly. Fine leaved, bright green color is especially well maintained during hot weather. Sow at the rate of one pound per 250 square feet.

Prices on application.

SPECIAL GRASSES FOR GROWING UNDER TREES OR IN SHADY PLACES

POA NEMORALIS—One of the very few grasses which thrives in comparatively dense shade.

POA TRIVIALIS—A desirable ingredient in partially shaded lawns. Resistant to drought.

Prices on application.

The Ideal Plant Food

For Lawns
Gardens
Flowers



5-lb. Cannister, perforated top.....	\$.50
25-lb. Bag	1.75
50-lb. Bag	3.00
100-lb. Bag	5.00

F. O. B. Warehouse

Disco Northern Grown Vegetable Seeds

The vegetable seeds we offer represent the very finest types procurable and have been selected with greatest care. We offer only those seeds whose merits and adaptability to our Northern climate we have proven in our own trials and table tests. We supply simple cultural instructions with every order and our Service Bureau is at your disposal, always pleased to assist you to solve your problems.

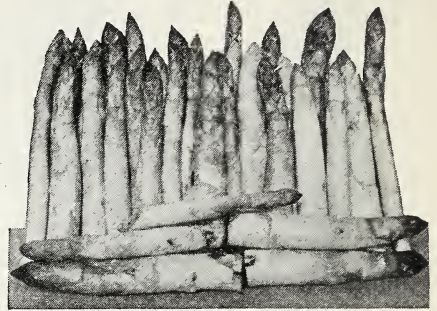
Disco Asparagus

One of the earliest and most delicious Spring vegetables. Should be grown in every garden.

12 MARTHA WASHINGTON—An entirely new rust-resistant Asparagus introduced by the United States Department of Agriculture, which we believe will soon be grown to the exclusion of all other sorts. A very heavy yielding variety, of dark green color with long, thick, heavy stalks closely folded at the tips. Pkt., 5c; oz., 10c; ¼ lb., 30c; lb., 90c, postpaid.

11 ROOTS—PALMETTO, large, strong roots. 12, 35c; 25, 50c; 50, 90c; 100, \$1.75, postpaid.

MARTHA WASHINGTON, extra large strong roots. 12, 45c; 25, 70c; 50, \$1.25; 100, \$2.25, postpaid.



Martha Washington

Disco Beans—Dwarf Bush Varieties

To insure hardiness, our Beans are grown as far North as possible, consistent with perfect development and proper maturity. We are not offering a lengthy list of varieties which usually only causes confusion. Our selection consists of what from long experience we believe to be the very best.

20 GOLDEN WAXPOD IMP.—The most popular wax variety and one of the best. Very early and a heavy cropper, the pale yellow pods sometimes growing eight inches long. Flesh brittle, stringless and of good quality. Pkt., 5c; ½ lb., 20c; lb., 30c; 3 lbs., 80c; 5 lbs., \$1.25, postpaid.

21 DISCO KIDNEY WAXPOD—Resembles the old favorite Wardwell's but more robust and prolific. Pods eight inches long stringless, fibreless, very fleshy and brittle; attractive clear yellow color. Pkt., 5c; ½ lb., 20c; lb., 30c; 3 lbs., 80c; 5 lbs., \$1.25, postpaid.

22 PENCIL POD BLACK WAX—The finest of the dwarf black seeded wax varieties. Exceptionally early and productive. Pods seven inches long, round, straight and crease-backed, perfectly stringless, fleshy and brittle. Pkt., 5c; ½ lb., 20c; lb., 30c; 3 lbs., 80c; 5 lbs., \$1.25, postpaid.

23 DAVIS WHITE KIDNEY WAX—Early, productive and attractive, pods large and flat, 7 inches long, very uniform and straight, color clear bright yellow. Seed white, kidney-shaped. Pkt., 5c; ½ lb., 20c; lb., 30c; 3 lbs., 80c; 5 lbs., \$1.25, postpaid.

31 DISCO STRINGLESS GREENPOD—Very early, hardy, vigorous and productive. Large pods, stout, round, tender and brittle; dark green in color. Perfectly stringless. Finest quality. Pkt., 5c; ½ lb., 20c; lb., 30c; 3 lbs., 80c; 5 lbs., \$1.25, postpaid.

32 BOUNTIFUL STRINGLESS—Excellent early variety. Strong growing, erect and very prolific. The light green, long, straight broad pods are very uniform in size and shape. Tender and free from strings. Pkt., 5c; ½ lb., 20c; lb., 30c; 3 lbs., 80c; 5 lbs., \$1.25, postpaid.

Lima Beans

52 NEW WONDER BUSH LIMA—A very fine mid-season variety, unusually dwarf. Beans are very broad and are as large as many of the pole varieties. Pkt., 10c; ½ lb., 25c; lb., 40c; 3 lbs., \$1.00; 5 lbs., \$1.60, postpaid.



Bountiful Stringless

Pole or Climbing Varieties

42 KENTUCKY WONDER or OLD HOME-STEAD—Very early and productive, pods will grow to 8 or 9 inches long; are very slender, curved, and of the tender quality. Pkt., 5c; ½ lb., 20c; lb., 35c; 3 lbs., 90c; 5 lbs., \$1.30, postpaid.

43 KENTUCKY WONDER WAX—One of earliest pole wax varieties. Pods 9 inches long, fleshy and brittle; color light yellow. Pkt., 5c; ½ lb., 20c; lb., 35c; 3 lbs., 90c; 5 lbs., \$1.30, postpaid.



Dakota Improved



Seed Company



Disco Beets (Table)

71 DETROIT DARK RED—One of the very best sorts for home or market garden and for canning or pickling. Roots uniformly smooth, medium size, and beautifully globe shaped; skin blood-red, flesh dark red, zoned with a lighter shade; quality tender and sweet. Pkt., 5c; oz., 10c; ¼ lb., 30c; ½ lb., 55c; 1 lb., 90c, postpaid.

73 EARLY BLOOD TURNIP—Improved early thick top shaped, smooth with carmine red flesh zoned with lighter shade. The leaves are green, tinged red. Pkt., 5c; oz., 10c; ¼ lb., 30c; ½ lb., 55c; 1 lb., 90c, postpaid.

Disco Cabbage

The selection of varieties we offer will enable you to have a supply all the year round.

110 DISCO ALPHA—The earliest variety. Should be sown for first crop. Ten days earlier than Jersey Wakefield, the heads are small, heart-shaped and very solid. May be planted very close as it produces very few outer leaves. Pkt., 5c; oz., 30c; ¼ lb., 80c; ½ lb., \$2.50, postpaid.

111 EARLY JERSEY WAKEFIELD—Early, pale glaucous green, with blunt conical heads of good size. The most widely known and popular variety. Pkt., 5c; oz., 30c; ¼ lb., 80c; ½ lb., \$2.50, postpaid.

112 EARLY WINNIGSTADT—Early main crop, firm, compact, short conical head, rather leafy, leaves undulated at the edge. One of the best for either early or late use. Pkt., 5c; oz., 30c; ¼ lb., 80c; ½ lb., \$2.50, postpaid.

113 COPENHAGEN MARKET—Short-stemmed, growth compact, outer leaves small, tightly folded over a solid, flattish, ball-shaped head with fine veins and small core, averaging about ten pounds in weight. Can be planted closely together and will yield a greater crop per acre than any other Cabbage. Our stock is true to type and matures with great uniformity. Pkt., 10c; oz., 35c; ¼ lb., 80c; ½ lb., \$2.80, postpaid.

115 PREMIUM FLAT DUTCH—Large heads flattened on the top, very full and firm, long stem. Will stand more frost than most varieties, and may be left later in the ground. Pkt., 5c; oz., 30c; ¼ lb., 80c; ½ lb., \$2.50, postpaid.

116 DANISH BALLHEAD—A very distinct short-stemmed Cabbage, with round, very hard and solid heads, a late variety, popularly grown for keeping through the Winter. Pkt., 10c; oz., 30c; ¼ lb., 90c; ½ lb., \$3.00, postpaid.

118 GOLDEN ACRE—One of the most valuable introductions in recent years. This splendid extra early Cabbage is of the Copenhagen Market type, but is ready for market a week to ten days earlier than that variety. It is one of the most uniform growing Cabbages we have ever seen; every plant and head a duplicate of the other. The heads are perfectly solid, as round as a ball and with few outer leaves. The plant is dwarf but vigorous, with a very short stem and may be set more closely than most varieties. This, we believe to be the best early Cabbage for both private and market gardeners of the round or ballhead type. Pkt., 10c; 1 oz., 60c; ¼ lb., \$1.25; 1 lb., \$4.00, postpaid.

130 RED DUTCH DWARF—Earliest of the red varieties, and the best for pickling. Pkt., 5c; oz., 35c; ¼ lb., \$1.00; 1 lb., \$3.50, postpaid.

140 SAVOY DWARF GREEN CURLED—Sometimes called "Honeycomb Cabbage." Hearts quite green and very solid; will stand twenty degrees of frost and remains a long time on the ground fit for use. Pkt., 5c; oz., 35c; ¼ lb., \$1.00; 1 lb., \$3.50, postpaid.

150 CHINESE (Pe Tsai)—Celery Cabbage, resembles Cos Lettuce, but has a decided Cabbage flavor. Pkt., 5c; oz., 30c; ¼ lb., 90c; ½ lb., \$2.50, postpaid.

CABBAGE PLANTS

Charleston Wakefield, Flat Dutch, Copenhagen Market, Glory of Enkhuisen and Succession.

Minimum Package is 25 Plants,
25 plants, 35c; 100 plants, \$1.25,
postpaid.

Disco Carrots

Our Carrots will please you; they are well grown, saved from the finest selected roots. Our selection is quite comprehensive, suited to every soil and condition.

160 CHANTENAY—Excellent medium early half long stump-rooted variety, about 6 to 8 inches long, very thick, smooth and of a deep orange-red color. This variety and Oxheart are really most popular sorts. Pkt., 5c; oz., 10c; ¼ lb., 30c; ½ lb., 50c; 1 lb., 95c, postpaid.

161 DANVERS HALF LONG—Pale color, half-long semi-stump rooted. Short top. Very sweet and tender quality flesh. Pkt., 5c; oz., 15c; ¼ lb., 35c; ½ lb., 60c; 1 lb., \$1.00, postpaid.

162 EARLY SCARLET HORN—Roots three inches long; color orange red, inclined to be blunt rooted, splendid for first early or market use. Forces well in frames. Pkt., 10c; oz., 20c; 4 oz., 40c; ½ lb., 60c; 1 lb., \$1.00, postpaid.

163 OXHEART or GUERANDE—Very short and thick, four and one-half to five inches long; easily harvested; color light bright orange; flesh very delicate and sweet; early. Pkt., 5c; oz., 10c; ¼ lb., 30c; ½ lb., 50c; 1 lb., 95c, postpaid.

164 ST. VALERY LONG RED—Roots ten to twelve inches long, smooth, bright red, broad at the neck and tapering to a point; flesh thick, sweet and tender, suitable for field culture, does best in light, deep, rich soil. Good Winter keeper. Pkt., 5c; oz., 15c; ¼ lb., 35c; ½ lb., 60c; 1 lb., \$1.10, postpaid.



Oxheart Carrots



Dakota Improved



Seed Company



Disco Cauliflower

Cauliflowers are really as easily grown as Cabbage, and ought to find a place in every garden. The selection we offer will enable you to have a supply all through the season.

170 ALL SEASONS, EXTRA IMPROVED—We gave the name "All Seasons" to this variety as it very aptly describes its characteristic. By sowing at intervals, splendid heads of Cauliflower may be available throughout the whole season. The quality is excellent and we cannot too strongly recommend it. Pkt., 10c; ¼ oz., 65c; oz., \$1.85, postpaid.

171 EARLY SNOWBALL EXTRA SELECTED—One of the best for the Northwest; early and superb quality. Our strain has been carefully selected and we know it will please you. Pkt., 10c; ¼ oz., 65c; oz., \$1.85, postpaid.

CAULIFLOWER PLANTS
Minimum package is 25 plants.
25 plants, 45c; 100 plants, \$1.50, postpaid.

Disco Celery

180 GIANT PASCAL—This is a green leaved variety developed from the Golden Yellow Self Blanching and we recommend it as being of the very best quality for fall and early winter use for the home garden and market. It blanches to a beautiful yellowish white color, is very solid and crisp, and of a fine nutty flavor. Pkt., 5c; ½ oz., 15c; oz., 25c; ¼ lb., 75c; lb. \$2.25, postpaid.

181 GOLDEN SELF-BLANCHING—A French variety introduced in 1883. Undoubtedly the finest early Celery. Pkt., 5c; ½ oz., 40c; oz., 60c; ¼ lb., \$1.75; lb., \$5.25 postpaid

182 WHITE PLUME IMPROVED—Distinguished by the silvery white color of its inner leaves. A very early handsome variety, easily blanched. Pkt., 10c; ½ oz., 25c; oz., 45c; ¼ lb., \$1.40; lb., \$4.75, postpaid.

183 EASY BLANCHING—Resembling Golden Self-Blanching, but the leaves are green and the stalks blanch white instead of yellow. Pkt., 10c; ½ oz., 25c; oz., 45c; ¼ lb., \$1.40; lb., \$4.75, postpaid.

190 CELERIAC or TURNIP-ROOTED CELERY—Develops, instead of the usual stalks, a broad, coarse root, which it much esteemed as a vegetable for flavoring soups. Pkt., 5c; ½ oz., 15c; oz., 20c; ¼ lb., 65c; lb., \$2.00, postpaid.



Golden Yellow Self
Blanching

Disco Swiss Chard

80 LUCULLUS—The cut-and-come again Spinach. If its merits, usefulness and easy cultivation were even half appreciated, it would find a place in every garden. Produces abundance of greens which can be used all Summer. Pkt., 10c; oz., 15c; ¼ lb., 30c; ½ lb., 45c; lb., 80c, postpaid.

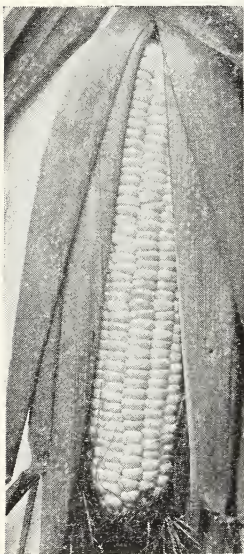
Disco Sweet Corn

221 GOLDEN BANTAM—Early; golden yellow in color, of highest quality. Ears six to seven inches long. Our stock has been most carefully selected. Pkt., 5c; ½ lb., 15c; lb., 25c; 3 lbs., 70c; 5 lbs., \$1.15, postpaid. By express, 10 lbs., \$1.85.

222 DISCO FIRST AND BEST—One of the earliest maturing varieties; beautiful white color. For such an early variety produces a wonderfully large ear. Beautiful quality. Pkt., 5c; ½ lb., 15c; lb., 25c; 3 lbs., 70c; 5 lbs., \$1.15, postpaid. By express, 10 lbs., \$1.85.

223 EARLY MAMMOTH WHITE CORN—The earliest and best of all extra early sweet corn. Ears ten to twelve-rowed; seven to eight inches long; very sweet, tender and white. If you have not tried this, do so, it will certainly please you. Pkt., 5c; ½ lb., 15c; lb., 25c; 3 lbs., 70c; 5 lbs., \$1.15, postpaid. By express, 10 lbs., \$1.85.

224 WHIPPLE'S EARLY YELLOW—This variety selected and introduced by the celebrated corn raiser, Mr. Whipple. Yellow variety, somewhat similar to Golden Bantam or Buttercup, but is earlier than either of these varieties; is equal in quality and the ears are much larger than Golden Bantam. Destined to become very popular; suitable for both market or home use. Pkt., 5c; ½ lb., 15c; lb., 25c; 3 lbs., 70c; 5 lbs., \$1.15, postpaid. By express, 10 lbs., \$1.85.



Golden Bantam



Dakota Improved



Seed Company



Disco Sweet Corn (Continued)

235 SUNSHINE—A new variety developed by Prof. Yeager of North Dakota. The nearest approach in quality to Golden Bantam being ten days earlier and producing larger ears. We heartily recommend it for both home gardens and truck gardens. **Pkt., 5c; ½ lb., 20c; lb., 30c; 3 lbs., 80c; 5 lbs., \$1.20, postpaid. By express, 10 lbs., \$1.80.**

Second Early Varieties

226—HOWLING MOB—It is said that this variety received its name because of the fact that when the original grower brought ears into the market to sell, so popular had they become that the crowds who came to his stand represented literally a howling mob. Ears are from nine to ten inches long, sixteen-rowed, of a beautiful white color, and of excellent quality; a good sort for general use both for the home garden and also for the market grower. **Pkt., 5c; ½ lb., 20c; lb., 30c; 3 lbs., 80c; 5 lbs., \$1.20, postpaid. By express, 10 lbs., \$2.00.**

231 BANTAM EVERGREEN—A cross between Golden Bantam and Stowell's Evergreen. The ears grow about eight inches long, twelve to fourteen-rowed, matures with Howling Mob; the kernels are broad and deep, of a rich golden yellow color. **Pkt., 10c; ½ lb., 25c; lb., 40c; 3 lbs., \$1.10; 5 lbs., \$1.60, postpaid. By express, 10 lbs., \$2.50.**

Main Crop Varieties

227 BLACK MEXICAN—This famous old variety, which will be remembered because of its unusual sweetness and delicate flavor, has been much improved by selection, and the stock we now offer is sufficiently early and hardy to be grown with perfect success anywhere in the United States.

This corn when ready for the table is a beautiful clear white, but when the grain is ripe it is a peculiar black or bluish black. We recommend this as the most desirable main crop variety. **Pkt., 10c; ½ lb., 30c; lb., 40c; 3 lbs., \$1.00; 5 lbs., \$1.50, postpaid. By express 10 lbs., \$2.50.**

229 STOWELL'S EVERGREEN—The best known Sweet Corn. Ears 8 to 9 inches long, 16 to 18-rowed, with a very deep, sweet grain. Our strain is unusually good. **Pkt., 5c; ½ lb., 15c; lb., 25c; 3 lbs., 65c; 5 lbs., 95c, postpaid. By express, 10 lbs., \$1.50.**

Popcorn

Why not give the children a patch of ground to grow Pop Corn? It will keep them busy and interested all summer and give them lots of fine fun in the winter evenings.

230 WHITE RICE—The leading market variety, matures early, a good yielder and excellent quality. **Pkt., 5c; ½ lb., 15c; lb., 25c; 3 lbs., 65c; 5 lbs., 95c, postpaid. By express, 10 lbs., \$1.50.**

232 T. N. T.—A new variety—produces the largest sized ears and pops larger kernels of any variety. Cannot be equaled for popping and large volume of bulk. Heavy yielder. Fine flavor. Crisp and tender. **Pkt., 5c; ½ lb., 15c; 1 lb., 25c; 3 lbs., 65c; 5 lbs., 95c, postpaid. By express, 10 lbs., \$1.50.**

233 JAPANESE WHITE HULLESS—If you have not tried this wonderful new Pop Corn you certainly ought to. The ears are about two or three inches long, the kernels on an average ear will usually produce twice as much Pop Corn as on the average large size White Rice ear, and with practically no waste as the kernels pop practically to the last kernel. Our seed is South Dakota grown, it can therefore be depended on to mature. Splendid flavor and a great cropper. **Pkt., 5c; ½ lb., 15c; lb., 25c; 3 lbs., 65c; 5 lbs., 95c postpaid. By express, 10 lbs., \$1.50.**

CORN FOR POPPING—Lb., 10c; 10 lbs., 70c, not prepaid.



Country Gentleman

228 COUNTRY GENTLEMAN—In this standard variety the acme of perfection and quality is obtained. The ears are from 8 to 9 inches long; the cob is small, white in color and densely covered with long, white, slender grains. The formation is peculiar inasmuch as the grains are not formed on the cob in regular row formation, but are closely packed together without any apparent order. A heavy cropper and owing to its unusually heavy husk, it is protected in such a manner that it retains its tenderness and keeps in the "milk stage" for an unusually long time. **Pkt., 5c; ½ lb., 15c; lb., 25c; 3 lbs., 65c; 5 lbs., 95c, postpaid. By express, 10 lbs., \$1.50.**



Dakota Improved



Seed Company



Disco Cucumbers

Fresh Cucumbers gathered from your own patch are just as different as chalk is to cheese from those half-wilted fruits which you buy in the store. **Moral**—Grow your own.



White Spine

239 EARLIEST OF ALL (White Spine)—Is medium in length, smooth and very symmetrical, dark green color. For long distance shipping. Size $7\frac{1}{2} \times 2\frac{1}{2}$ inches. Edible in 55 days. Pkt., 5c; oz., 10c; $\frac{1}{4}$ lb., 30c; $\frac{1}{2}$ lb., 55c; lb., 90c, postpaid.

240 EXTRA EARLY RUSSIAN (Black Spine)—The smallest Cucumber we grow, extremely early and amazingly productive. For small uniform pickles. Edible in 50 days. Pkt., 5c; oz., 20c; $\frac{1}{4}$ lb., 40c; $\frac{1}{2}$ lb., 60c; lb., 95c, postpaid.

241 EARLY FORTUNE (White Spine)—In our opinion the best long distance shipping Cucumber. Pkt., 5c; oz., 10c; $\frac{1}{4}$ lb., 30c; $\frac{1}{2}$ lb., 55c; lb., 90c, postpaid.

Disco Egg Plant



251 NEW YORK IMPROVED PURPLE—The plant grows to a large size; of a spreading nature and absolutely spineless. For main crop, we heartily recommend this excellent variety. Pkt., 10c; oz., 50c; $\frac{1}{4}$ lb., \$1.50; lb., \$4.75, postpaid.

242 CHICAGO PICKLING (Black Spine)—The most popular of the small, early pickle varieties. It is enormously productive and very disease resistant. Edible in 58 days. Pkt., 5c; oz., 10c; $\frac{1}{4}$ lb., 30c; $\frac{1}{2}$ lb., 55c; lb., 90c, postpaid.

243 COOL AND CRISP (White Spine)—Nearly white when fully mature. While not a popular variety, it is early, prolific and desirable. Edible in 55 days. Pkt., 5c; oz., 10c; $\frac{1}{4}$ lb., 35c; $\frac{1}{2}$ lb., 60c; lb., \$1.00, postpaid.

244 EXTRA LONG WHITE SPINE—Somewhat similar to the Davis Perfect, except it is longer and larger. Edible in 60 days. Pkt., 10c; oz., 25c; $\frac{1}{4}$ lb., 50c; $\frac{1}{2}$ lb., 75c; lb., \$1.25, postpaid.

245 JAPANESE CLIMBING—(Black Spine)—A distinct variety used for its climbing qualities to cover trellises and fences. Edible in 58 days. Pkt., 10c; oz., 20c; $\frac{1}{4}$ lb., 45c; $\frac{1}{2}$ lb., 80c; lb., \$1.35, postpaid.

247 LONG GREEN IMPROVED (Black Spine)—The standard Cucumber for either slicing or pickling, the Long Green enjoys about twice the popularity use that does any other. It is extremely prolific, medium late, and for hardiness and disease resistance is the best variety. The ends taper somewhat and it is slightly warted. For general use for all purposes there is no superior to Long Green. The small pickles are well shaped, while in the slicing stage, the fruits are very attractive. It is sometimes called "London Long

Green." Size 13×3 inches. Edible in 62 days. Weight $3\frac{1}{2}$ pounds. Pkt., 5c; oz., 15c; $\frac{1}{4}$ lb., 35c; $\frac{1}{2}$ lb., 65c; lb., 95c, postpaid.

Disco Kale or Borecole

260 DWARF GREEN CURLED SCOTCH—Grows 1 to $1\frac{1}{2}$ feet high, spreading growth, leaves intensely curled. Pkt., 5c; oz., 15c; $\frac{1}{4}$ lb., 35c; lb., 95c, postpaid.

Kohl-Rabi Turnip Rooted Cabbage

Bulbs grows above ground; are stripped and cooked like turnips, but are much sweeter and finer flavor.

270 EARLY WHITE VIENNA—Best for garden cultivation, early, dwarf top, fine quality. For field variety, see Field Roots, page 19. Pkt., 5c; oz., 20c; $\frac{1}{4}$ lb., 60c; lb., \$1.75, postpaid.

Leek

Splendid for soups, the mainstay of Scotch broth.

290 LARGE AMERICAN FLAG—The most popular variety with gardeners everywhere; of strong growing habit, very broad leaved. If earthed up, blanches beautifully, forming excellent long white plants which are a delight to the cook. Pkt., 5c; oz., 20c; $\frac{1}{4}$ lb., 65c; lb., \$2.00, postpaid.



Disco Lettuce

Try a new variety of Lettuce this year—It may surprise you

In hot weather Lettuce is always welcome on the table and nothing beats a few fresh heads pulled from your own garden.

301 BIG BOSTON—Very popular for outside culture as well as cold frame forcing. Heads large and compact; leaves broad, almost smooth; color light green, slightly tinged with reddish brown; heart greenish white, tinged yellow; of good quality. **Pkt., 5c; oz., 15c; ¼ lb., 35c; ½ lb., 65c; lb., \$1.00, postpaid.**

302 CALIFORNIA CREAM BUTTER—Plant compact, heads large, globular and very firm; leaves broad, crumpled and very thick; color dark, glossy green, freely spotted deep brown; the heads blanch a beautiful creamy yellow; quality the best. **Pkt., 10c; oz., 20c; ¼ lb., 50c; ½ lb., 95c; lb., \$1.45, postpaid.**

303 GRAND RAPIDS—The favorite loose-leaved forcing Lettuce; does well in the Northwest for early planting outdoors. Leaves short, spatulate in shape, excessively crumpled, and the border heavily fringed; color very light green, with no trace of brown. A most handsome and attractive Lettuce. **Pkt., 5c; oz., 10c; ¼ lb., 30c; ½ lb., 55c; lb., 90c, postpaid.**

304 MAY KING—A handsome, extremely early compact heading variety; leaves light yellowish green, tinged reddish brown, while the heart blanches a rich golden yellow. **Pkt., 5c; oz., 15c; ¼ lb., 45c; ½ lb., 80c; 1 lb., \$1.35, postpaid.**

305 TENNIS BALL—A very reliable, adaptable, sure-heading sort; heads globular, firm and well blanched; leaves broad and much crumpled; color light green and never spotted brown; finest quality; very suitable for late sowing. **Pkt., 5c; oz., 20c; ¼ lb., 45c; ½ lb., 70c; lb., \$1.20, postpaid.**

306 WAY-A-HEAD—A very early, handsome, sure-heading variety; the outer leaves are light green and crumpled; the inner head blanches a rich buttery yellow; of superior quality. **Pkt., 5c; oz., 20c; ¼ lb., 45c; ½ lb., 70c; lb., \$1.20, postpaid.**



Big Boston

307 PARIS WHITE COS—Smooth, long, narrow, upright leaves and blanches nicely when tied up; color dark green; quality fine; self-folding. **Pkt., 10c; oz., 20c; ¼ lb., 40c; ½ lb., 70c; lb., \$1.30.**

308 BLACK-SEEDED SIMPSON—One of the best and most popular large, early, loose-heading varieties, succeeding everywhere, and always reliable. Leaves very broad and crumpled. Color light yellowish green. **Pkt., 5c; oz., 10c; ¼ lb., 30c; ½ lb., 55c; lb., 90c, postpaid.**

309 PRIZEHEAD—A crisp and tender loose-leaved, non-heading variety, deservedly popular. Color, medium green, shading to brown. **Pkt., 5c; oz., 10c; ¼ lb., 30c; ½ lb., 55c; lb., 90c, postpaid.**

Disco Muskmelons

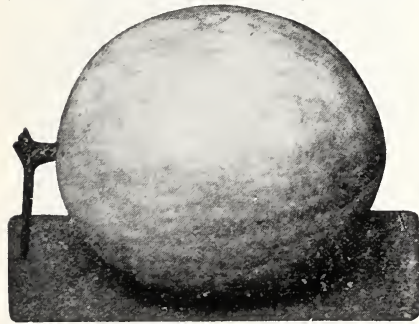
We pride ourselves that our strains of Muskmelon are the very finest possible. The selection we offer contains the very best of the Early Medium and Main Crop varieties.

318 HALES BEST—A remarkably early shipping melon, oval in shape, 8 inches long by 4½ inches in diameter with heavy netting and fairly distinct ribbing. Flesh exceptionally thick and deep salmon in color. A most promising variety. **Pkt., 5c; oz., 15c; ¼ lb., 40c; ½ lb., 75c; lb., \$1.20, postpaid.**

319 EMERALD GEM—A choice variety, the fruits being deep emerald green in color; globular or slightly flattened shape; distinctly ribbed and lightly netted; the flesh being unusually thick, sweet and of a deep, rich salmon color; the seed cavity being very small. An excellent variety for home use and for the local market, but we do not recommend it as a shipping variety. **Pkt., 5c; oz., 15c; ¼ lb., 40c; ½ lb., 75c; lb., \$1.20, postpaid.**

320 EXTRA EARLY KNIGHT—An extremely early medium-sized melon; the fruits being oblong, distinctly ribbed and closely netted; the flesh being fairly thick and very sweet; the color medium green blending to light pink. One of the best melons for Northwest and an excellent shipper. **Pkt., 5c; oz., 15c; ¼ lb., 40c; ½ lb., 75c; lb., \$1.20, postpaid.**

321 HONEY DEW—Green fleshed; rapidly gaining in popularity and bids fair to become one of the most generally grown sorts. The fruits are large, oval shape, generally about 10 inches long and 8 inches in diameter; surface is smooth and hard without ribbing or netting; creamy white in color; the flesh being a light emerald green, very thick and ripening right to the rind. The quality of this melon leaves nothing to be desired. It keeps well and is an excellent shipping sort. **Pkt., 5c; oz., 15c; ¼ lb., 40c; ½ lb., 75c; lb., \$1.20, postpaid.**



Honey Dew

316 MILWAUKEE MARKET—A variety very popular in Chicago and Milwaukee markets. Fruits of medium size, nearly round, lightly ribbed and fairly netted. Skin light green; flesh thick, salmon colored and very sweet. **Pkt., 5c; oz., 15c; ¼ lb., 40c; ½ lb., 75c; lb., \$1.20, postpaid.**

317 HEARTS OF GOLD—A splendid mid-season variety developed from the Hoo-doo, being larger and more uniform. Fruit round with tendency to heart shape, lightly ribbed and covered with a fine gray netting. Flesh very thick, deep salmon color and of high quality. A good shipping melon. **Pkt., 5c; oz., 15c; ¼ lb., 40c; ½ lb., 75c; lb., \$1.20, postpaid.**



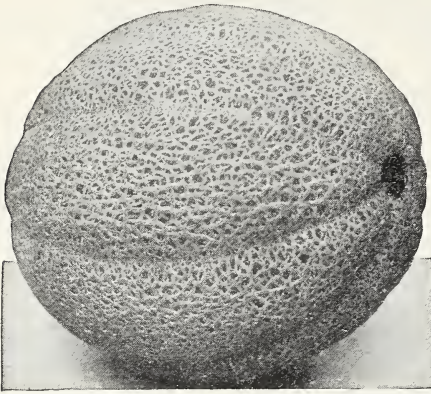
Dakota Improved



Seed Company



Disco Muskmelons (Continued)



Extra Early Osage

326 ROCKY FORD—One of the most popular varieties of Muskmelon. Our strain is an exceptionally good one. The fruit is small, almost round, perfectly smooth, showing no ribs; flesh thick and deep green, showing a faint lining of pink and gold at the center. The quality is of the best. **Pkt., 5c; oz., 15c; ¼ lb., 40c; ½ lb., 75c; lb., \$1.20, postpaid.**

327 POLLOCK'S NO. 25—Very similar to Rocky Ford, except that the flesh is salmon colored. For those who prefer this to the green flesh, we recommend this variety. **Pkt., 5c; oz., 15c; ¼ lb., 40c; ½ lb., 75c; lb., \$1.20, postpaid.**

328 EXTRA EARLY OSAGE—A distinct improvement over the old type of Osage, being also a week to ten days earlier. Fruit dark green; flesh rich orange-salmon. One of the best for general use. **Pkt., 5c; oz., 15c; ¼ lb., 40c; ½ lb., 75c; lb., \$1.20, postpaid.**

Disco Watermelons

As with Muskmelon, we exercise the greatest care to insure that our stocks will be of the very finest quality.

330 CITRON, COLORADO PRESERVING—A decided improvement on the old Preserving Citron; seeds are green; the shape of the fruit is roundish oblong; very early; hardy and productive. **Pkt., 5c; oz., 10c; ¼ lb., 30c; ½ lb., 50c; lb., 90c, postpaid.**

331 CITRON, RED SEEDED—In many respects this is similar in quality and productiveness to the green-seeded variety. **Pkt., 5c; oz., 10c; ¼ lb., 30c; ½ lb., 50c; lb., 90c, postpaid.**

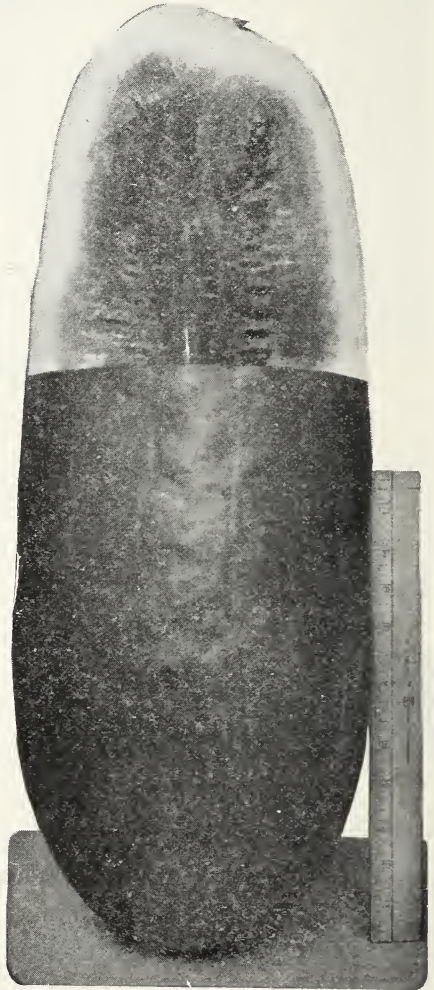
332 COLE'S EARLY—One of the earliest; very hardy; of medium size, nearly round; rind dark green, striped a lighter shade; flesh deep pink and excellent in quality. **Pkt., 5c; oz., 20c; ¼ lb., 40c; ½ lb., 60c; lb., 95c, postpaid.**

333 PEERLESS OR ICE CREAM—Very early, of medium size, and one of the best for the Northwest; short, oblong in form; rind thin, light green, mottled and finely veined with a darker shade; flesh bright scarlet and very sweet. **Pkt., 5c; oz., 10c; ¼ lb., 25c; ½ lb., 40c; lb., 70c, postpaid.**

322 JENNY LIND—An old favorite, unusually early, small, green fleshed; the fruit is round, flattened at ends, ribbed and netted. For an early variety the flesh is very attractive in flavor and quality. **Pkt., 5c; oz., 15c; ¼ lb., 40c; ½ lb., 75c; lb., \$1.20, postpaid.**

323 MONTREAL GREEN NUTMEG—Is possibly famed more than anything else for the unusual size to which it can be grown; fruits weighing 18 to 20 pounds being quite common. Fruits are round, flattened at both ends; medium green color, ribbed and netted; the flesh is remarkably thick and of superior quality. **Pkt., 5c; oz., 15c; ¼ lb., 40c; ½ lb., 75c; lb., \$1.20, postpaid.**

325 BANANA—When growing, looks just like a great big banana; grows about 2 feet long, flesh of a deep salmon color, quality very fine. Excellent specimens are brought in to us by our customers every Summer. **Pkt., 5c; oz., 15c; ¼ lb., 40c; ½ lb., 75c; lb., \$1.20, postpaid.**



Tom Watson



Dakota Improved



Seed Company



Disco Watermelons

334 ROUND LIGHT ICING—While not as early as Cole's Early, is sufficiently early to insure its ripening in any state in the Northwest or even in Canada. It grows to a fair size, is nearly round; the flesh is a beautiful bright red, while the rind is very light green; the quality is excellent. **Pkt., 5c; oz., 10c; ¼ lb., 25c; ½ lb., 40c; lb., 70c, postpaid.**

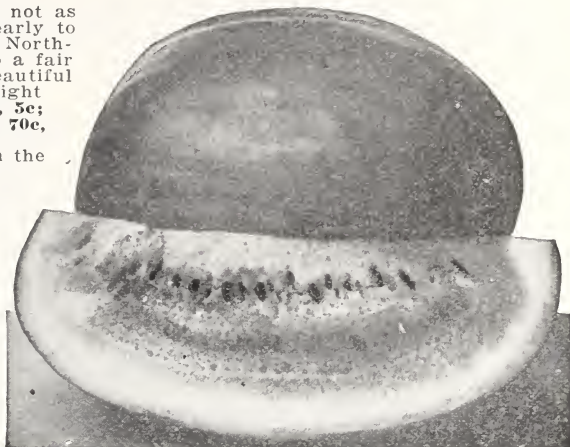
335 TOM WATSON—In our opinion the best shipping melon on the market, and second to none as a main crop variety; produces large size fruits; color a medium green; flesh a rich red and of excellent quality. We recommend our strains as being second to none, and suggest that this be used as the main crop sort. **Pkt., 5c; oz., 10c; ¼ lb., 25c; ½ lb., 40c; lb., 70c, postpaid.**

336 KLECKLEY'S SWEET—This melon did very well with many of our customers last season; it grows to a fairly large size, is medium early and exceedingly sweet; oblong in shape; rind very dark green, flesh bright rich red, white seeded. Not recommended for shipping, but excellent for home use. **Pkt., 5c; oz., 10c; ¼ lb., 25c; ½ lb., 40c; lb., 70c, postpaid.**

337 LONG LIGHT ICING—A large type of the long melons. Rind light green; seeds white. Flesh of excellent quality. Early and productive; will produce melons 25 pounds in weight and over. An ideal variety, but not recommended for shipping. **Pkt., 5c; oz., 10c; ¼ lb., 25c; ½ lb., 40c; lb., 70c, postpaid.**

338 GOLDEN HONEY—The best of the yellow fleshed melons. Oblong in shape, rind is dark green with irregular stripes of a darker green. We tried this variety out near Mitchell, South Dakota, last year, the results surpassed our expectations. A truly wonderful melon. **Pkt., 5c; oz., 10c; ¼ lb., 25c; ½ lb., 40c; lb., 70c, postpaid.**

339 HUNGARIAN HONEY—A superb early variety, uniformly globe-shaped, color dark green, mottled and veined with a darker shade, flesh brilliant red, ripening clear to the rind and of highest quality; seeds brown and very small. **Pkt., 5c; oz., 20c; ¼ lb., 40c; ½ lb., 60c; lb., \$1.00, postpaid.**



Round Light Icing

341—ROUND DARK ICING—Medium to large in size, moderately early and good in quality. Fruit round and dark green, flesh bright red, seeds white. **Pkt., 5c; oz., 10c; ¼ lb., 25c; ½ lb., 40c; lb., 70c, postpaid.**

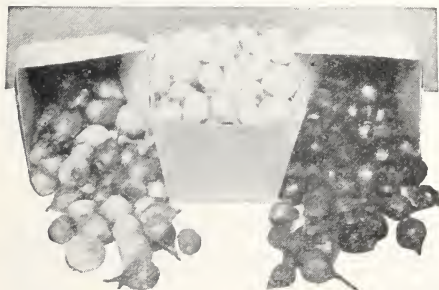
342 FORDHOOK EARLY—An extra early variety of fine quality and fair size. From round to oblong. Skin dark green, mottled with a darker shade. Flesh dark red, seeds white. Very popular with some of the large growers in Davison and Sanborn Counties. **Pkt., 5c; oz., 10c; ¼ lb., 25c; ½ lb., 40c; lb., 70c, postpaid.**

Disco Okra or Gumbo

357 LONG WHITE VELVET—Plants grow to a height of 3½ feet. The pods are white, long, smooth and tender, early and productive. **Pkt., 5c; oz., 15c; ¼ lb., 25c; ½ lb., 40c; lb., 70c, postpaid.**

Disco Onion Sets

The production of sets is an interference with nature and the natural growth of the Onion, and in consequence they require care and attention to insure that they will be kept in good condition, ready to grow and mature quickly when planted.



(Postpaid)
1-lb. 2-lbs. 4-lbs.

390 Yellow Dutch Onion Sets.....	\$0.25	\$0.45	\$0.75
391 White Dutch Onion Sets.....	.30	.55	.85
392 Red Dutch Onion Sets.....	.25	.45	.75
393 Yellow Multiplier Onion Sets..	.35	.65	1.20

Disco Onion Plants

Crystal White Wax and Yellow Bermuda
Be sure to specify which variety you want when ordering.

200, 50c; 300, 65c; 400, 75c; 500, 90c; 1,000, \$1.60; 2,000, \$3.15; 3,000, \$4.70, postpaid.

4,000 to 10,000, 80c per 1,000, express collect.



Dakota Improved



Seed Company



Disco Onions

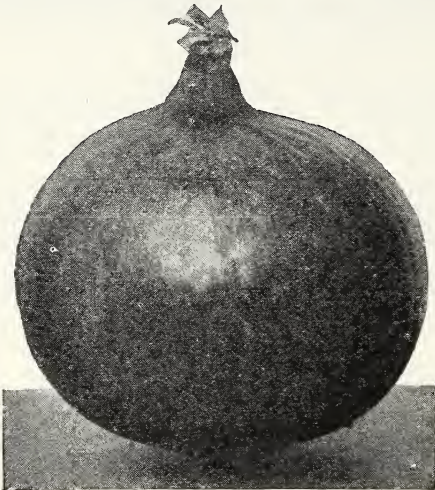
The Onion is one of the most important crops in the Northwest, so far as vegetables are concerned; it is also one of the most healthful vegetables, eaten either raw or cooked.

There is also a vast difference in the quality of different stocks of Onion Seed. Our Onion Seeds are all grown from choice selected bulbs and can be depended upon to give the best results. Our seed is all new crop of strong vitality.

359 MOUNTAIN DANVERS—This is described by the introducers as the earliest and best keeping yellow globe onion. Our own experience confirms this description and we are pleased to introduce and heartily recommend it. It is a good yielder, and will ripen up hard and solid without any "thick necks" "doubles" or "splits." Pkt., 10c; oz., 25c; ¼ lb., 65c; ½ lb., \$1.10; lb., \$2.00, postpaid.

360 PRIZETAKER—One of the largest Onions grown in the Middle West, a sure cropper, globe shaped, color light straw, highly recommended. Pkt., 5c; oz., 25c; ¼ lb., 75c; ½ lb., \$1.25; lb., \$2.00, postpaid.

361 AUSTRALIAN BROWN—Noted for its keeping qualities and productiveness; the color is quite distinct; very early, semi-globe shaped. Should be given a trial in every garden. Pkt., 5c; oz., 20c; ¼ lb., 55c; ½ lb., 90c; lb., \$1.65, postpaid.



Large Red Wethersfield

363 LARGE RED WETHERSFIELD—Probably the oldest and best known type of Onion. A fine, large, handsome variety with bright red colored, somewhat flattened bulbs and purplish white flesh. Very productive and a good keeper. Pkt., 5c; oz., 25c; ¼ lb., 70c; ½ lb., \$1.25; lb., \$1.90, postpaid.

364 SOUTHPORT RED GLOBE—The finest type of red Onion; perfect globe shape with a small neck; excellent keeper; color a deep purplish red. Our strain is particularly good. Pkt., 10c; oz., 25c; ¼ lb., 70c; ½ lb., \$1.10; lb., \$1.85, postpaid.

380 SOUTHPORT YELLOW GLOBE—A beautiful globe-shaped Onion, color deep golden yellow; small neck and heavy thick skin; flesh white, crisp and mild in flavor; excellent shipping sort. Pkt., 10c; oz., 30c; ¼ lb., 85c; ½ lb., \$1.25; lb., \$2.25, postpaid.

381 SOUTHPORT WHITE GLOBE—Globe-shaped; skin of purest paper white, flesh very crisp, fine grained and snowy white in color; exceedingly mild. Pkt., 10c; oz., 30c; ¼ lb., 85c; ½ lb., \$1.50; lb., \$2.50, postpaid.

Pickling Varieties

382 WHITE BARLETTA—Bulb small, beautiful white color, flat on top and conical at the bottom; extremely early and a most valuable pickling sort. Pkt., 5c; oz., 30c; ¼ lb., 95c; ½ lb., \$1.50; lb., \$2.50, postpaid.

385 WHITE WELSH—Does not form a bulb like other Onions, but only a small enlargement at the base of each shoot. Ready for use very early in the Spring; comes up every year. Pkt., 5c; oz., 30c; ¼ lb., 95c; ½ lb., \$1.50; lb., \$2.50, postpaid.

386 ONION SEED IN MIXTURE—For the convenience of our customers who only want to provide space in their gardens for one patch of Onions, we have made up a mixture consisting of every variety listed in our catalog. By planting this mixture you can, in a small space, have quite a selection to draw from for your varied needs, whether it be a white Onion for a salad or a stronger flavored Onion for soups. In fact, whether you want a white, red, yellow or brown Onion, you can pick whatever you want when you want it. Pkt., 5c; oz., 25c; ¼ lb., 65c; ½ lb., \$1.25; lb., \$2.00, postpaid.



Champion Moss Curled Parsley

Disco Parsley

Very useful for flavoring soups and for garnishing.

400 CHAMPION MOSS CURLED—A compact-growing, densely curled variety of a dark green color, very popular for garnishing. Pkt., 5c; oz., 10c; ¼ lb., 25c; ½ lb., 45c; lb., 80c, postpaid.

401 HAMBURG or TURNIP ROOTED—The edible roots resemble a small, thick parsnip, both in shape and color; much used for flavoring soups and stews. Pkt., 5c; oz., 10c; ¼ lb., 30c; ½ lb., 55c; lb., \$1.00, postpaid.

Disco Parsnips

411 LARGE GUERNSEY—Shorter and thicker in the root than "Hollow Crown;" an excellent market gardener's variety. Pkt., 5c; oz., 10c; ¼ lb., 30c; ½ lb., 45c; lb., 90c, postpaid.



Dakota Improved



Seed Company



Disco Peas

Early Varieties

420 GRADUS IMPROVED—Quite as early as the old type of Gradus or Prosperity, but a much heavier and more certain cropper. Pkt., 5c; ½ lb., 20c; lb., 30c; 3 lbs., 85c; 5 lbs., \$1.20, postpaid. By express, 10 lbs. or more at 22c per lb.

421 AMERICAN WONDER—Probably the most popular early Pea on this continent. Pkt., 5c; ½ lb., 20c; lb., 30c; 3 lbs., 85c; 5 lbs., \$1.15, postpaid. By express, 10 lbs. or more at 22c per lb.

422 LITTLE GEM—Just a trifle later and a few inches taller than the foregoing. Pkt., 5c; ½ lb., 20c; lb., 30c; 3 lbs., 85c; 5 lbs., \$1.15, postpaid. By express, 10 lbs., or more at 22c per lb.

423 LITTLE MARVEL—An extra fine dwarf sweet-flavored Pea. Pkt., 5c; ½ lb., 25c; lb., 35c; 3 lbs., 90c; 5 lbs., \$1.30, postpaid. By express, 10 lbs., or more at 22c per lb.

424 NOTT'S EXCELSIOR—A very early dwarf growing variety of branching habit. Pods are small, blunt ended. A heavy cropper. Height, 1½ feet. Pkt., 5c; ½ lb., 20c; lb., 30c; 3 lbs., 80c; 5 lbs., \$1.15, postpaid. By express, 10 lbs. or more at 22c per lb.

456 SUGAR DWARF WHITE EDIBLE PODDED—Differs from other Peas in that the pods can be used similar to string beans. Pkt., 5c; ½ lb., 20c; lb., 35c; 3 lbs., 90c; 5 lbs., \$1.25, postpaid. By express, 10 lbs. or more at 22c per lb.

Main Crop Varieties

445 BLISS EVERBEARING—An old standard late main crop variety. Pkt., 5c; ½ lb., 20c; lb., 30c; 3 lbs., 85c; 5 lbs., \$1.20, postpaid. By express, 10 lbs., or more at 22c per lb.

451 IMPROVED STRATAGEM—One of the best known main crops, and the most popular. Pkt., 5c; ½ lb., 20c; lb., 30c; 3 lbs., 85c; 5 lbs., \$1.20, postpaid. By express, 10 lbs. or more at 22c per lb.

452 TELEPHONE—An old favorite, popular in Great Britain for many years. Pkt., 5c; ½ lb., 25c; lb., 35c; 3 lbs., 90c; 5 lbs., \$1.25, postpaid. By express, 10 lbs. or more at 22c per lb.



ALASKA PEAS

Second Early Varieties

442 THOMAS LAXTON—An excellent Second early, coming into use almost immediately after Gradus. Pkt., 5c; ½ lb., 25c; lb., 35c; 3 lbs., 90c; 5 lbs., \$1.25, postpaid. By express, 10 lbs. or more, 22c.

443 ALASKA—An early small smooth pea of good quality. The dark green color of the pod makes it very desirable for market gardeners. Height, 2½ feet. Pkt., 5c; ½ lb., 20c; lb., 30c; 3 lbs., 85c; 5 lbs., \$1.15, postpaid. By express, 10 lbs. or more, 22c.

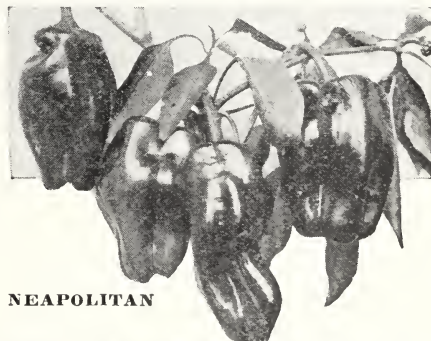
444 POTLATCH OR BIG DINNER—This splendid variety ripens a few days later than American Wonder; the pods are very much larger, usually borne in pairs and in the greatest profusion. Pkt., 5c; ½ lb., 20c; lb., 35c; 3 lbs., 90c; 5 lbs., \$1.25, postpaid. By express, 10 lbs. or more, 22c.

Disco Peanuts



460 EARLY SWEET—Can be grown in any light sandy soil where potatoes succeed well. Pkt., 10c; lb., 50c; 5 lbs., \$1.75, postpaid.

Disco Pepper



NEAPOLITAN

465 LARGE BELL or BULL NOSE—First early; scarlet fruits 2 inches in diameter, 3 inches long, blunt at the end, while the flavor is mild and sweet. Pkt., 10c; oz., 40c; ¼ lb., \$1.20; lb., \$3.55, postpaid.

466 LONG RED CAYENNE—Fruits average 4 inches long and ¾ inch in diameter; are a bright red color. Unusually hot and pungent. Pkt., 10c; oz., 40c; ¼ lb., \$1.15; lb., \$3.50, postpaid.

467 NEAPOLITAN—Earliest and most productive large variety and one of the sweetest. Fruit bright red, 4 inches long and 2 inches thick. Pkt., 10c; oz., 40c; ¼ lb., \$1.15; lb., \$3.75, postpaid.

468 RED CHERRY—Fruits small, round or cherry-shaped; rich scarlet and very hot. Pkt., 10c; oz., 40c; ¼ lb., \$1.15; lb., \$3.75, postpaid.

PEPPER PLANTS—35c per doz., postpaid.



Dakota Improved



Seed Company



Disco Pumpkin

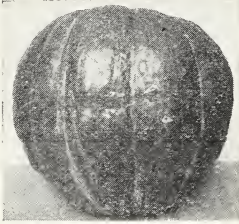
480 EARLY SUGAR—Fruits small, round, flattened at the ends and slightly ribbed. Pkt., 5c; oz., 10c; ¼ lb., 20c; ½ lb., 35c; lb., 60c, postpaid.

481 JAPANESE PIE—Grows to a large size; skin deep green with dark stripes; flesh deep yellow. Pkt., 5c; oz., 15c; ¼ lb., 35c; ½ lb., 60c; lb., \$1.00, postpaid.

482 KING OF THE MAMMOTHS—The giant among pumpkins, specimens having been grown weighing as high as 250 pounds and measuring 2 feet or even more in diameter. Useful alike for pies and stock feeding. An excellent keeper. Pkt., 5c; oz., 15c; ¼ lb., 40c; ½ lb., 75c; lb., \$1.25, postpaid.

483 LARGE CHEESE or KENTUCKY FIELD—Large, round; flesh yellow; one of the best canning sorts. Pkt., 5c; oz., 10c; ¼ lb., 20c; ½ lb., 35c; lb., 55c, postpaid.

484 CONNECTICUT FIELD—The most popular variety for planting in corn for stock feeding and also for making pies. Pkt., 5c; oz., 10c; ¼ lb., 20c; ½ lb., 35c; lb., 55c, postpaid.



Kentucky Field

Disco Radish

Turnip or Round Varieties

492 SCARLET GLOBE—A bright red variety with firm, crisp, tender flesh. Pkt., 5c; oz., 10c; ¼ lb., 30c; ½ lb., 55c; lb., 75c, postpaid.

493 SCARLET TURNIP WHITE TIPPED—Extra early forcing variety, valuable also for ordinary outdoor use. Pkt., 5c; oz., 10c; ¼ lb., 30c; ½ lb., 50c; lb., 75c, postpaid.

495 WHITE GLOBE—A beautiful white skinned variety; tender and crisp. Pkt., 5c; oz., 10c; ¼ lb., 30c; ½ lb., 50c; lb., 75c, postpaid.

496 TURNIP VARIETIES, MIXED—It enables one to have a varied selection at a small cost and in a small space. Pkt., 5c; oz., 10c; ¼ lb., 30c; ½ lb., 50c; lb., 75c, postpaid.

Olive or Oval-Shaped Varieties

497 FRENCH BREAKFAST—The most popular variety; small and quick growing. Pkt., 5c; oz., 10c; ¼ lb., 30c; ½ lb., 50c; lb., 75c, postpaid.

Long-Shaped Varieties

500 CHARTIER—Roots 7 to 8 inches long and rather thick; deep scarlet top, pure white at the tip. Pkt., 5c; oz., 10c; ¼ lb., 30c; ½ lb., 50c; lb., 75c, postpaid.

501 ICICLE—The leading long white radish and one of the earliest. Pkt., 5c; oz., 10c; ¼ lb., 30c; ½ lb., 50c; lb., 75c, postpaid.

503 MIXTURE (All Varieties)—A mixture of all summer varieties for home use; the selection is A-1. Pkt., 5c; oz., 10c; ¼ lb., 30c; ½ lb., 50c; lb., 75c, postpaid.

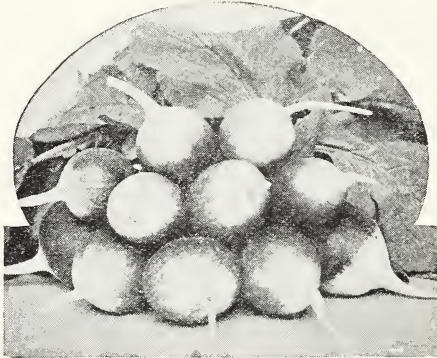
504 LONG BRIGHTEST SCARLET—One of the best and earliest of the long scarlet radishes; crisp and tender. Pkt., 5c; oz., 10c; ¼ lb., 30c; ½ lb., 50c; lb., 75c, postpaid.

Fall and Winter Varieties

510 BLACK SPANISH, ROUND—Roots round, 3 to 4 inches in diameter. Pkt., 5c; oz., 10c; ¼ lb., 35c; ½ lb., 55c; lb., \$1.00, postpaid.

511 BLACK SPANISH, LONG—One of the latest and hardest varieties for winter use; roots 8 to 9 inches long, 2 to 3 inches in diameter. Pkt., 5c; oz., 10c; ¼ lb., 35c; ½ lb., 55c; lb., \$1.00, postpaid.

512 CHINA ROSE (Scarlet China)—One of the best winter sorts; skin smooth, rose color; flesh white, crisp, pungent; 4 to 5 inches long and 2 inches thick. Pkt., 5c; oz., 10c; ¼ lb., 30c; ½ lb., 50c; lb., 90c, postpaid.



Scarlet Turnip White Tipped

Disco Rhubarb

521 VICTORIA—Well known standard variety. Good for general use. Pkt., 5c; oz., 15c; ¼ lb., 50c, postpaid.

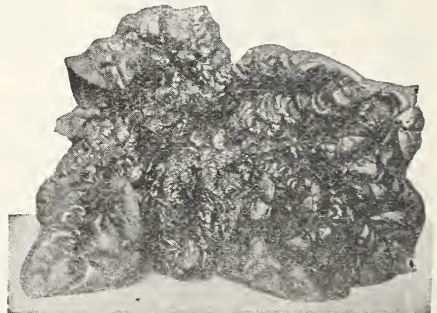
Disco Spinach

535 BLOOMSDALE or SAVOY—Very early and hardy and one of the best for market and canning. Pkt., 5c; oz., 10c; ¼ lb., 15c; ½ lb., 25c; lb., 40c, postpaid.

536 LONG-STANDING ROUND SEEDED—Slower growing than Bloomsdale; leaves very large and of good substance. Pkt., 5c; oz., 10c; ¼ lb., 15c; ½ lb., 25c; lb., 40c, postpaid.

537 KING OF DENMARK—A recent introduction, and we believe it to be far the best of the long-season varieties. Pkt., 5c; oz., 10c; ¼ lb., 15c; ½ lb., 25c; lb., 40c, postpaid.

540 NEW ZEALAND—Plant tall and spreading, with numerous side shoots; leaves medium green. Pkt., 5c; oz., 10c; ¼ lb., 25c; ½ lb., 40c; lb., 55c, postpaid.



Bloomsdale or Savoy



Dakota Improved



Seed Company



Disco Squash

550 EXTRA EARLY ORANGE MARROW—The earliest of the Marrow Squashes. Very prolific; a good keeper. Pkt., 5c; oz., 15c; ¼ lb., 40c; ½ lb., 75c; lb., \$1.25, postpaid.

551 GIANT SUMMER CROOKNECK—The largest and one of the earliest summer varieties. Pkt., 5c; oz., 10c; ¼ lb., 35c; ½ lb., 65c; lb., \$1.00, postpaid.

552 GOLDEN HUBBARD—Quite like the Hubbard in form and habit but decidedly earlier. Pkt., 5c; oz., 15c; ¼ lb., 40c; ½ lb., 70c; lb., \$1.20, postpaid.

553 IMPROVED HUBBARD—The standard Winter Squash; fruits large, heavy and moderately warted; shell dark bronze green; flesh bright orange-yellow, fine grained, thick and dry. Pkt., 5c; oz., 15c; ¼ lb., 45c; ½ lb., 75c; lb., \$1.25, postpaid.

554 WARTED HUBBARD—This variety of the Hubbard is a great favorite with the market men. Very striking in appearance, the warty knobs draw general attention. Grows to nearly double the size of the common Hubbard. Pkt., 5c; oz., 15c; ¼ lb., 45c; ½ lb., 75c; lb., \$1.25, postpaid.

555 EARLY WHITE BUSH SCALLOP—Very early summer Squash. Pkt., 5c; oz., 10c; ¼ lb., 35c; ½ lb., 60c; lb., \$1.00, postpaid.

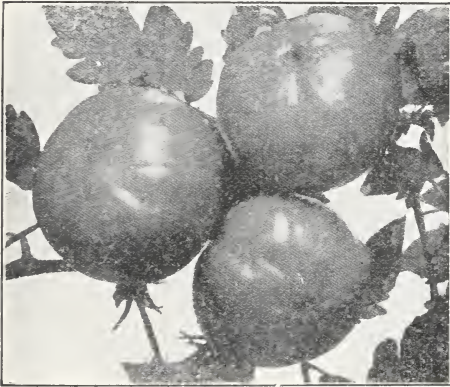


558 DELICIOUS—A winter variety of medium size, pear-shaped, of a dark green color, flesh orange, very early and fine flavor. Pkt., 5c; oz., 15c; ¼ lb., 40c; ½ lb., 75c; lb., \$1.25, postpaid.

559 MAMMOTH WHALE—Fruit 2 to 3 feet long, skin gray green; flesh orange-yellow. Pkt., 5c; oz., 15c; ¼ lb., 50c; ½ lb., 90c; lb., \$1.45, postpaid.

560 TABLE QUEEN—Acorn or Des Moines. A small very productive variety having very many desirable qualities. Pkt., 10c; oz., 20c; ¼ lb., 40c; ½ lb., 75c; lb., \$1.20, postpaid.

Disco Tomatoes



Earliana

SMALL FRUITED VARIETIES

593 STRAWBERRY (Ground Cherry or Husk)—The true Golden Husk Tomato; esteemed for preserves. Pkt., 5c; oz., 45c; ¼ lb., \$1.40, postpaid.

TOMATO PLANTS — Earliana, Marglobe Ponderosa, Chalks Early Jewel, John Baer, Bonny Best and Beefsteak, 45c.

Red River and Oxheart varieties, doz., 50c.

Disco Turnips

610 PURPLE TOP STRAP LEAVED—The most widely cultivated and best known variety on the American continent. Pkt., 5c; oz., 10c; ¼ lb., 25c; ½ lb., 40c; lb., 70c, postpaid.

611 PURPLE TOP WHITE GLOBE—Similar to above except perfect globe shape. Pkt., 5c; oz., 10c; ¼ lb., 25c; ½ lb., 40c; lb., 70c, postpaid.

612 WHITE EGG—An early, oval or egg-shaped variety. Pkt., 5c; oz., 10c; ¼ lb., 25c; ½ lb., 40c; lb., 70c, postpaid.

581 BONNIE BEST—A very early variety, fruits medium size; good market sort; free from hard core. Pkt., 10c; oz., 40c; ¼ lb., \$1.25; ½ lb., \$2.00; lb., \$3.75, postpaid.

582 CRIMSON CUSHION—The largest of the bright red colored Tomatoes; heavy cropper, of excellent quality. Pkt., 10c; oz., 65c; ¼ lb., \$1.75; ½ lb., \$3.00; lb., \$5.50, postpaid.

583 DISCO EARLIANA—We believe the earliest and best Tomato in cultivation; unusually productive for an early sort; round, very smooth and solid; flesh of excellent quality. Pkt., 5c; oz., 30c; ¼ lb., 90c; ½ lb., \$1.70; lb., \$2.80, postpaid.

585 JOHN BAER—Early, productive and of excellent quality. Pkt., 5c; oz., 30c; ¼ lb., 95c; ½ lb., \$1.75; lb., \$3.25, postpaid.

586 PONDEROSA—An exceptionally large, purple fruited Tomato, one of the best for home use. Pkt., 10c; oz., 60c; ¼ lb., \$1.75; ½ lb., \$3.25; lb., \$5.25, postpaid.

587 MARGLOBE—In our opinion, the best of three new disease-resistant varieties introduced under supervision of Dr. F. J. Pritchard of U. S. Department of Agriculture. Fruits are large, smooth and globular, meaty and almost coreless. Very productive, well adapted for truck growing, shipping and as a canning sort. Fruits are red; may be classed as a second early. Pkt., 5c; oz., 40c; ¼ lb., \$1.20; ½ lb., \$2.20; lb., \$4.00, postpaid.

Swede or Rutabaga

614—DISCO SPECIAL GARDEN OR TABLE SWEDE—Compact in top, with small, clean, neat, well-shaped roots, thick skin and sweet, tender flesh. Pkt., 5c; oz., 10c; ¼ lb., 25c; ½ lb., 40c; lb., 75c, postpaid.

Disco Salsify or Vegetable Oyster

525 MAMMOTH SANDWICH ISLAND—Roots stored for use as a winter vegetable; leaves may be used as a salad. Pkt., 5c; oz., 20c; ¼ lb., 60c; lb., \$1.80, postpaid.



Dakota Improved



Seed Company



Disco Choice Flower Seeds

Those marked "H. H. A." signify Half Hardy Annuals, are best sown in pots or boxes indoors and transplanted to their flowering quarters when the weather is favorable. Those marked "H. A.," Hardy Annuals, may be treated in the same manner but may also be sown right out-of-doors. If sown lightly and the plants thinned out after they have germinated, they will give excellent results. Those marked "H. A. C." are Hardy Annual Climbers, may be either sown in pots or boxes and transplanted. Those marked "H. P." are Hardy Perennials, and those marked "H. B." are Hardy Biennials. Both may be planted indoors in the Spring and transplanted. Half Hardy Perennials (H. H. P.) and Half Hardy Climbers (H. H. C.) should be sown indoors and transplanted in open ground when the weather is favorable, and lifted in Fall if intended to save them during the Winter. "G. P." and "G. A." are Perennials and Annuals for decoration. Sown indoors and transplanted in pots.

We recommend our customers to write to U. S. Dept. of Agriculture, Washington, D. C., for copy of Farmers' Bulletin No. 195.

2512 ALYSSUM—Benthami Sweet Alyssum, H. A., 4-inch; valuable for edgings. **Pkt., 5c.**

2521 ANTIRRHINUM—Majus, dwarf, mixed, H. P., 12 inch. **Pkt., 10c.**

2525 AQUILEGIA—H. P., mixed double, 24-inch, very beautiful colors. **Pkt., 10c.**

2527 ASPARAGUS—Plumosus nanus, G. P., asparagus fern. **Pkt., 25c.**

2528 ASPARAGUS—Sprengeri, G. P., ideal basket plant. **Pkt., 25c.**

ASTERS—H. H. A. Our selection of Asters is the finest ever offered to the garden lovers of the Western States; easily grown; provide abundance of cut flowers. **Pkt., 10c.**

2531 COMET, mixed, 18-inch.

2537 DWARF CHRYSANTHEMUMS, mixed, 9-inch.

2539 DWARF VICTORIA, mixed, 9-inch.

2559 BALSAM—Double Camellia-flowered, H. H. A., 24-inch. A splendid pot plant. **Pkt., 10c.**

2566 CALCEOLARIA—Choice strain, G. A., 18-inch. Spotted, blotched and self-colored. **Pkt., 25c.**

2568 CALENDULA—Officinalis fl. pl. Meteor, H. A., 12-in. Scotch Marigold, double. **Pkt., 5c.**

2581 CANDYTUFT—H. A., mixed, extra choice, 12-inch. One of the brightest and easiest grown hardy annuals give a gorgeous display throughout the season. **Pkt., 5c.**

CANTERBURY BELLS—H. P., an old-fashioned flower which everyone should have in their flower garden. **Pkt., 10c.**

2584 Single Mixed, 20-inch.

2585 Double Mixed, 30-inch.

CARNATION—H. P., sown indoors in February they will bloom in August, double, beautiful flowers and very free bloomers.

2590 Chaubaud's or Earliest French, 24-inch. **Pkt., 15c.**



Calendula

2591 Margarita—Semi-dwarf, mixed, 9-inch. **Pkt., 10c.**

CENTAUREA—Cyanus. The popular Cornflower or Bachelor's Button. H. A. **Pkt., 5c.**

2632 Minor, blue, 24-inch.

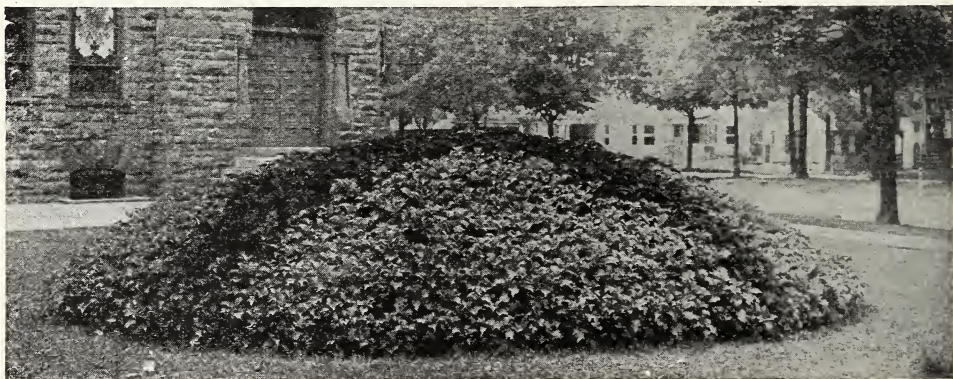
2633 Minor, mixed, 24-inch.

CHRYSANTHEMUM—H. A., splendid for cut flowers. **Pkt., 5c.**

2598 Coronarium, mixed, double, 18-inch.

2604 Tricolor, mixed, 18-inch, bright and effective colors.

2607 CINERARIA—Hybrida grandiflora, G. A., 18-inch. **Pkt., 25c.**



Dakota Improved



Seed Company



Disco Choice Flower Seeds (Continued)

CLARKIAS—Should be grown in every garden; easily grown; make a gorgeous display. H. A. **Pkt., 5c.**

2611 Elegans.

2614 Pulchella, double, mixed, 24-inch.

2615 COBAEA—Scandens, mixed, H. H. C.

Makes a splendid house plant. **Pkt., 10c.**

2616 COCKSCOMB—Glasgow Prize, G. A.,

12-inch, beautiful crimson comb. **Pkt., 10c.**

2617 COLEUS—(Flame Nettle) mixed, G.

P., 24-inch, beautiful foliage plant, fine for

window, pretty year in and year out. **Pkt., 10c.**

2624 COSMOS—Mammoth Giant, mixed, H.

H. A., 42-inch. **Pkt., 5c.**

2646 DAHLIA—H. H. P., choice double, 48-

inch. **Pkt., 10c.**

2650 DELPHINIUM—(Wrexham Type), H.

P. Mixed single and double, all colors. **Pkt., 10c**

2653 DIANTHUS—Chinensis, double, mixed,

H. B., 12-inch. **Pkt., 5c.**

2685 ESCHSCHOLTZIA—California Pop-

pies, splendid for borders, will produce an

abundance of flowers all Summer, H. A., 12-

inch, mixed. **Pkt., 5c.**

2694 GERANIUM—Zonale, choice, single

mixed, G. P., 18-inch, delightful colors. **Pkt.,**

25c.



Petunia

Giants of California

GODETIA—Nothing can equal it for quickly producing a blaze of flowers; H. A. **Pkt., 5c.**

2705 Mixed, tall varieties, 18-inch.

2706 Dwarf varieties, 12-inch.

2714 GYPSOPHILA—Elegans, alba, H.

A., 18-inch, known as Baby's Breath. **Pkt.,**

5c.

2733 HELICHRYSUM—Monster double

mixed, H. A., 18-inch, useful everlasting.

Pkt., 5c.

2734 HELIOTROPIUM—Largest flower-

ing giant mixed, G. P., 24-inch, Heliotrope

or Cherry Pie plant. **Pkt., 10c.**

2737 HOLLYHOCK—H. P., double,

choice colors, 72-inch. Will bloom the first

year. **Pkt., 10c.**

2740 HUMULUS—Japanese Hop, a

very rapid growing climber, H. A. C.

Pkt., 5c.

2765 JACOBAEA—Dwarf double

mixed, H. A., 20-inch, beautiful double

flowers, useful for cutting. **Pkt., 10c.**

2767 KOCHIA—Tricophylla (Sum-

mer Cypress), H. A., 24-inch; the Mexi-

cans Fire Bush, beautiful foliage.

Pkt., 5c.

LARKSPUR—H. A., beautiful annuals, succeed everywhere and give charming effects. **Pkt., 5c.**

2776 Tall Branching, mixed, 12-inch.

2777 Double Tall Rocket, mixed.

MARIGOLD—H. H. A., our strains of Marigold are excep-

tionally fine, will produce a fine percentage of double flowers

of exquisite colors. **Pkt., 10c.**

2814 African Orange, 24-inch.

2816 French Mixed, 18-inch.

2827 MESEMBRYANTHEMUM—Crystallinum, H. H.

A., Iceplant, easily grown, 3-inch. **Pkt., 5c.**

2828 MIGNONETTE—H. A., large flowering, 12-inch.

Pkt., 5c.

NASTURTIUM—Our selection of Nasturtiums will be

found to contain a very choice assortment of colors. The dwarf

varieties are splendid for edgings of borders and the tall for

covering unsightly corners or trellises.

2856 Tom Thumb Mixed, H. A., 12-inch. **Pkt., 5c;**

oz., 15c.

2860 Tall Mixed, H. A. C., fine for trellises. **Pkt., 5c;**

oz., 15c.

PANSY—One of the most interesting classes of flower-

s grown. A bed of Pansies in bloom always has some-

thing new for you in variety of color. H. P.

2887 Mixed Colors, 6-inch. **Pkt., 5c.**

2888 Trimardean Giant, mixed, 6-inch. **Pkt., 10c.**

2889 Disco Giant Mixture. A beautiful strain of

Pansies, containing a very fine assortment of colors,

beautifully blotched and marked. If sown early in

April or May, will bloom in July or August, be kept

through the Winter if covered with a mulch of hay,

straw or litter. **Pkt., 10c.**

2892 PELARGONIUM—Fancy, G. P., 18-inch. Splen-

d window and house decoration. **Pkt., 25c.**

PETUNIA—For outdoor decoration or house culture. Few plants equal the petunia in effectiveness. They commence blooming early and continue right through until killed by frost. **Pkt., 10c.**

2895 Giants of California—Mixed, 24-inch.

2899 Hybrida Grandiflora—Fringed, mixed

colors, 24-inch.

PHLOX—Very pretty annuals blooming the

whole season through; very useful for house

decorations, last a long time when cut, H. H.

A. **Pkt., 5c.**

2905 POPPY—Carnation flowered, H. A.,

mixed, choice double flowers, 24-inch. **Pkt., 5c.**



Hollyhocks, Double



Dakota Improved



Seed Company



Disco Choice Flower Seeds (Continued)



3009 VERBENA—H. H. P., hybrida mammoth mixed, 6-inch; enormous flowers, colors fine. **Pkt., 10c.**

3034 ZINNIAS Disco Giant Dahlia—Flowered. This is unquestionably the best novelty in Zinnias, as a result of painstaking care and selection, the size, form and coloring have been much improved upon. The flowers measuring 4 to 6 inches in diameter in the following colors: orange, yellow, flesh and pink, chestnut and orange and colors never seen before in Zinnias. 3 foot. **Pkt. 10c.**

PORTULACA—H. H. A., forms masses of delicate green foliage, covered with bright colored flowers. Will stand any amount of dry weather.

2916 Grand, large single flowers, 6-inch. **Pkt., 5c.**

2917 Grand, double mixed, 6-in. **Pkt., 10c.**

PRIMULAS—For winter decoration primulas are one of the most valuable greenhouse plants. The following varieties have been saved from the largest and most beautiful flowers only.

2921 PRIMULA—Obconica graniflora Hybrids, G. P., 12-inch; one of the best window plants, blooms continually. **Pkt., 15c.**

2923 PRIMULA Sinensis—Double mixed, G. P., 6-inch; splendid for Winter flowering in the house or greenhouse; easily grown. **Pkt., 25c.**

2926 PYRETHRUM roseum hybridum—H. P., double, 24-inch. **Pkt., 10c.**

2937 RHODANTHE Manglesi rose—H. H. A., 12-inch; useful everlastings. **Pkt., 5c.**

2952 SALPIGLOSSIS Grandiflora—Mixed H. H. A., 24-inch; one of our most beautiful annuals. **Pkt., 10c.**

2986 SWEET WIVELSFIELD—A new race of Hardy Annual. Is a cross between Dianthus Allwoodi and Sweet William. Will become as popular as Asters, Antirrhinums, Stock, etc. Few plants can compare with Sweet Wivelsfield for wealth of coloring and lengthy season of flowering. Sow in the open in April for summer flowering. **Pkt., 25c.**

3040 DISCO WILD FLOWER GARDEN MIXTURE—A brilliant mixture of showy flowers. You get surprise after surprise as the various plants burst into bloom. **Pkt., 5c.**

Disco Flower Plants

All our plants are carefully grown and transplanted at least once. Well hardened with a good root system. They are grown by experienced men under glass cloth and hardened off in outside cold frames. Minimum package is 25 plants unless otherwise noted. Sent postpaid.

FLOWER PLANTS

- DUSTY MILLER12 plants 50c
- ASTERS, any color12 plants 50c
- PANSIES (Giant)12 plants 75c
- PETUNIAS (Rosy Morn)12 plants 35c
- PETUNIAS (Ruffled Monsters)each 15c
- VERBENA, any color12 plants 50c
- SALVIA (Splendens)12 plants 90c
- SNAPDRAGON, any color12 plants 35c

PERENNIALS

HARDY PHLOX, assorted colors. Nice thrifty plants that will most all bloom the first year. **8 for \$1.00.**

WREXHAM DELPHINIUM, good strong seedlings that will bloom the first summer. **7 for \$1.00.**

BRISTOL FAIRY, GYPSOPHILA grafted plants. These bloom steady from early summer until fall. Very large and double. **75c each.**

Your Plants Must Be Fed
Use **STIM-U-PLANT**

These tablets are the latest word in gardening efficiency. Easy to use. Immediate results. Order **STIM-U-PLANT** tablets with your seed and plant order. Price: 30 tablets, 25c; 100 tablets, 75c; 1,000 tablets, \$3.50.



Delphinium



Dakota Improved



Seed Company



Disco Specialties in Sweet Peas for 1932

THE QUEEN OF HARDY ANNUALS

Select List. Large Packets 10c each.

- 2010 BARBARA—Large salmon-orange.
 2030 DAINTY SPENCER—White, edged rose-pink.
 2040 ELFRIDA PEARSON—Large shell-pink.
 2051 FIERY CROSS—Bright red-orange-cerise.
 2102 KING WHITE—Best for Northwest.
 2226 MARY PICKFORD—Dainty cream pink.
 2229 CAMPFIRE—Vivid scarlet.
 2232 THE FAWN—Suffused amber on cream ground.
 2233 FLUFFY RUFFLES—Ruffled rose pink.
 2332 BURPEE'S LAVENDER, Early—Wisteria.
 2333 MRS. HERBERT HOOVER—The Calif. blue.
 2296 VULCAN—Brightest of all scarlets.
 2299 SWEET LAVENDER—A new and better bloom.
 2300 ORANGE KING—Beautiful glowing orange.
 2295 EARLY FLOWERING MIXED—The best early flowering varieties.

Disco Special Mixtures

2220 DISCO SPENCER or BUTTERFLY MIXTURE—Pkt., 10c; oz., 25c; ¼ lb., 75c. A beautiful blend of 75 Spencers, including many new varieties. The choicest mixture to be had.

2225 DISCO GRANDIFLORA MIXTURE—Pkt., 5c; oz., 15c; ¼ lb., 50c. A splendid assortment of finest colors, blended to harmonize and insure a fair proportion of all.

It is impossible to have too many Sweet Peas.



Disco Gladioli

The prices quoted are for large bulbs, 1 inch or more in diameter sent postpaid. Four bulbs at the dozen rate. Planting instructions with each order.

ALBANIA—One of the best whites, strong grower. 60c per doz.
 ALAN V BUNCE—Excellent orange with deeper throat. Tall and showy. \$1.20 per doz.

BERTY SNOW—About the best lavender in the whole glad family. Lighter throat. Makes a fine spike either for the showroom or for cutting. 35c each.

CHAS. DICKENS—Deep purple, a much improved Henry Ford. Tall spikes with large flowers. 15c each.

COPPER BRONZE—One of Kunderds unusual colored varieties. Large flowers. 15c each.

DR. VAN FLEET—Tall growing pink, creamy throat. 50c per doz.

EMILE AUBURN—Huge bronze red with cherry red throat. Very rank growing with six to ten real large flowers open at once. 20c each.

GOLD EAGLE—Pure rich ruffled yellow. Fine cut flower. 20c each.

HEAVENLY BLUE—About the finest of the blue varieties. Tall and very nice form. 75c each.

KUNDERDS YELLOW WONDER—Good light yellow, deeper throat. 15c each.

LOS ANGELES—Soft orange pink with deeper throat markings. 50c doz.

MARINA—Excellent commercial orange self color. Makes a fine bouquet combined with Bertly Snow. 90c per doz.

MR. W. H. PHIPPS—One of the greatest of all glads with spikes having from twelve to twenty huge salmon pink blooms open at one time. Stands the hot weather fine. 25c each.

OLIVE GOODRICH—Exquisite white with pink edge all around the flowers. Form always perfect and spikes always good. Medium size bulbs. \$1.20 per doz.

OPALESCENT—Fine lavender with darker throat splashes. 50c per doz.



DISCO SPECIAL MIXTURE—Here is a real bargain, combining large bulbs, every color of the rainbow, plain and ruffled, early and late. 35c doz.

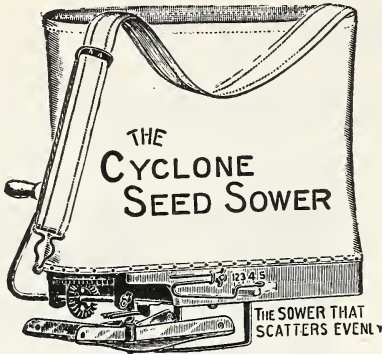


Dakota Improved



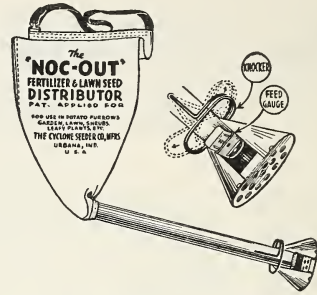
Seed Company





The Cyclone has a national reputation as a High-Grade Seed Sower. It is built, not for cheapness, but for durability and accurate work. Scatters seed evenly both sides and may be quickly adjusted for different seeds. No waste of seed. Just the thing for sowing all kinds of clover and grass seed, millet, rape and even grain. **Price, reduced, \$2.00; by mail, \$2.25.**

BIRD SEED—Finest re-cleaned. Hemp, per lb., 15c; Canary, per lb., 15c; Bird Millet, per lb., 10c; Parrot Food, per lb., 10c; Bird Rape, per lb., 15c; DISCO Bird Mixture, per lb., 15c. Postage extra.



The **NOC-OUT FERTILIZER and LAWN GRASS DISTRIBUTOR** is a new, inexpensive, labor-saving device for distributing the various Commercial Plant Foods or Fertilizers and Lawn Seed on small truck patches, potato furrows, nurseries, etc.

It is easily operated and eliminates the wasteful, laborious and insanitary way of handling these materials by hand. The "knocker" or vibrator insures a uniform flow of materials and the feed gauge can be regulated for heavy or thin applications. **Price \$1.45, postpaid.**

We always carry a stock of Tankage and Oil Meal of finest quality. Write for prices, stating quantity required.

Prevent Disease Losses by Using Du Bay Seed Disinfectants



CERESAN
A dust disinfectant for Wheat, Oats, Barley, other cereals and Cotton. 1-lb. tin, 75c; 5-lb. tin, \$3.00; 25-lb. pail, \$12.50; 100-lb. drum, \$49.00; 300-lb. drum, \$144.00.

SEMESAN BEL
An instantaneous dip disinfectant for seed potatoes. 4-oz. tin, 50c; 1-lb. tin, \$1.75; 5-lb. tin, \$8.00; 25-lb. pail, \$31.25; 100-lb. drum, \$120.00; 300-lb. drum, \$345.00.

SEMESAN
A general disinfectant for vegetable and flower seeds or bulbs, and certain plant diseases. 2-oz. tin, 50c; 1-lb. tin, \$2.75; 5-lb. tin, \$13.00; 25-lb. pail, \$56.25; 100-lb. drum, \$220.00; 300-lb. drum, \$645.00.

SEMESAN JR.
A dust disinfectant for seed corn. 4-oz. tin, 50c; 1-lb. tin, \$1.75; 5-lb. tin, \$8.00; 25-lb. pail, \$31.25; 100-lb. drum, \$120.00; 300-lb. drum, \$345.00. **Prices Not Postpaid.**

Alphabetical List

	Page		Page		Page		Page
Alfalfa	2-3-4-5	Cucumbers	20	Lettuce	21	Rutabaga	14-27
Asparagus	16	Cyclone Seed	32	Mangels	14	Salsify	27
Asparagus Roots	16			Millet	13	Semesan	10-32
Barley	14	Egg Plant	20	Muskmelon	21-22	Soy Beans	12
Beans, Field	12	Fertilizer	15-30	Nitragin	5	Speltz or Emmer	14
Beans, Garden	16	Feterita	11	Noc-Out Seed Diet	32	Spinach	26
Beets, Field	14	Field Beans	12	Okra	23	Squash	27
Beets, Garden	17	Field Carrots	14	Onions	24	Stimulant	30
Buckwheat	11	Field Peas	12	Onion Plants	22	Sudan Grass	11
Cabbage	17	Flax	14	Onion Sets	23	Sugar Beets	14
Cabbage Plants	17	Flower Seeds	28, 29-30-31	Parsley	24	Sunflower	11
Cane	11	Flower Plants	30	Parsnip	24	Sweet Clover	6
Carrots, Field	14	Gladiolus	31	Peanuts	25	Sweet Peas	31
Carrots, Garden	17	Grasses	7-15	Peas, Garden	25	Swiss Chard	18
Cauliflower	18	Kaffir Corn	11	Peas, Field	12	Tomatoes	27
Celery	18	Kale	20	Pepper	25	Turnips	27
Ceresan	14-32	Kohl-Rabi	20	Pop Corn	19	Vegetable	16-27
Clovers	6-7	Lawn Grass	15	Pumpkin	26	Seeds	16-27
Corn, Field	8-9-10	Leek	20	Radish	26	Vert	15
Corn, Pop	19			Rape	12	Watermelons	22-23
Corn, Sweet	18-19			Rhubarb	26	Wheat	14





Make Your House a Home

Make It a Real Joy
A Source of Pride
And a Pleasure

Flowers Can Do It

What is more delightful than a
yard ablaze with color, and the
fragrant beauty of the old world
flowers?

Zinias
Snapdragon
Poppy
Cosmos
Nasturtium
Candytuft
Clarkias
Sweet Peas

*"Come up where the dust never rises—
But only the perfume of flowers—
And your life shall be glad with sur-
prises
Of beautiful hours."*

A Complete Garden For a Dollar

Ten different
varieties
Old World favorite
hardy annuals

and

Twenty varieties
Vegetables
Peas
Beans
Lettuce
Tomatoes
Radishes, etc.

Sent to any address
in United States
complete with
booklet giving full
cultural directions.

POST PREPAID

\$1.50 Worth for
One Dollar

The Biggest Value
Offered in Years





THE FINEST ALFALFAS
IN CULTIVATION

Dakota Improved Seed Company

Mitchell, South Dakota