

Historic, Archive Document

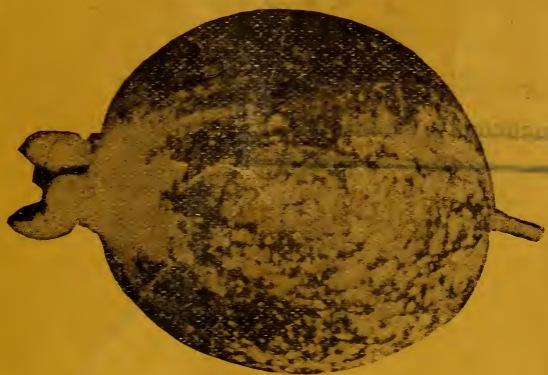
Do not assume content reflects current scientific
knowledge, policies, or practices

62.09

14

FEIJOA SELLOWIANA

(PINEAPPLE GUAVA)



FRUIT—(Natural Size)



FOR SALE BY ITS

ORIGINAL INTRODUCERS

The Montarioso Nursery

P. O. BOX 1500

Santa Barbara, California

FEIJOA SELLOWIANA

Feijoa
Sellowiana



The coming
fruit for
all parts of
California



A Perfect
Shipper



As hardy as
a Pine.

Foliage
leathery ;
glossy green
above, silvery
white beneath.

Flowers large
and showy.

Petals white.
Stamens
crimson.

Fruit Oval
green, juicy,
highly per-
fumed.

FLOWING BRANCH—One-fifth Natural Size

From Specimen at Montarioso Nursery, Planted by Dr. Franceschi in 1901

Feijoa Sellowiana is a tall, much branched shrub, closely related to the well known Guavas, but quite distinct from all of them in its foliage, flowers and fruits. It will stand more cold than any of the species of Guavas as yet introduced, its native habitat extending from Southern Brazil to Argentina and Uruguay. From this latter

country it was first introduced to France by Mons. Edouard André, the noted traveler and landscape architect, in the year 1890. To the United States it was first brought by Dr. Franceschi, of Santa Barbara, in July, 1901. The propagation of this plant was at first attended with some difficulties, and a few years elapsed

before it has begun to attract attention and to be appreciated by the general public, as its introducer felt sure it would. As an ornamental shrub FEIJOA is a most remarkable one, both for its persistent foliage—which is glossy green above and silvery white underneath—and for its large flowers, with broad white petals and long, bright crimson stamens, appearing in the greatest profusion during April and May. The fruit has the shape of a plum, 3 inches by $2\frac{1}{4}$; the skin of a peculiar metallic green color, thin, but tough enough to insure safe shipment for long distances. The pulp is white and juicy, sweet, with a little acidity, in flavor and perfume and undescribable blend of pineapple, raspberry and banana; and not more than twenty very tiny seeds are to be found in each fruit. All persons who have had the chance of tasting the fruit of FEIJOA are unanimous in stating that it is the best introduction in its line during the last ten years.

Feijoa Sellowiana is well provided with its wiry branches and leathery foliage to stand the strongest and most parching winds. It has proved to be not at all particular about soil, and is sure to thrive under ordinary care. The 12 year old specimen at Montarioso, from which the illustration is taken, has never received a drop of water but from the sky, the ground being simply well cultivated.

For Prices and Particulars, Address

MONTARIOSO NURSERY

P. O. Box 1500

SANTA BARBARA, CAL.