

ANY KILLED OR INJURED BY T-N-T BLAST
Girl Fatally Burned Playing With Matches
LINK DETECTIVE W. J. BURNS WITH OIL QUIZ

EXPLOSION AT FACTORY IS FOLLOWED BY FIRE

Plant Becomes Inferno as Flaming Debris Falls In All Directions

MUTCHEN, N. J., March 1.—Between thirty and thirty-five persons were killed or are missing in the explosion which destroyed the Nixon Nitration Works here, it was announced by officials of the plant at 2 o'clock this afternoon.

Eighteen men were doing repair work on the roof of the building when it blew up. None of them has been accounted for.

Scores in Plant It was reported from another source that seventy-five persons were in the building when the explosion occurred.

The explosion, it is stated, was used by TNT and the blast took houses for miles around. One whole family, of the name Duman, was reported to have been killed. They were father, mother, two sons and a daughter. Immediately following the explosion, the Nixon building burst into flames.

Fire Quickly Spreads The flames quickly communicated to another large building close to the Nixon plant.

Then the flames spread to twenty-five small buildings used by house workmen and soon the place was a raging inferno. The shock of the explosion was terrific. It lifted the Nixon building high into the air. Brick and wood were hurled in all directions.

The earth fairly trembled, buildings for miles around vibrated and walls in homes in the vicinity crumbled.

Seek Dead, Dying Hurry-up calls for ambulances, surgeons and nurses were sent to nearby cities. Within a half hour ambulances were arriving here to take care of the dead and dying.

The explosion was caused, it is believed, by TNT (tri-nitro) (Continued on Page 7)

Front of Evening News Office Now Being Remodeled

The building contractor, with a force of men began the work yesterday of remodeling the front part of The Evening News building, at 139 South Brand boulevard. As previously stated in these columns, another story will be added to the front and a more modern exterior will take the place of the present one.

The thirty-seven-foot addition, a story and a half high with a basement, has been completed in the rear, and it is in this new addition the 24-page tubular duplex printing press will be installed within the next two weeks.

A special effort will be made to give the usual good service to our patrons while these changes are being made. Upon entering the office, if you do not find the department you want, do not hesitate to ask for information. It is the desire of The Evening News management to give courteous and prompt service, at the counter and over the phone.

MARINES LANDED IN REVOLT ZONE

U. S. Troops to Guard Lives of U. S. Citizens in Honduran Warfare

WASHINGTON, March 1.—Additional American marines have been landed in Honduras to protect American lives, the state department announced today. The marines landed at Ceiba, where fighting has taken place between Honduran federal troops and revolutionists and where new hostilities are anticipated.

Approximately seventy marines are now on Honduran soil, according to advices to the state department.

It was announced that another American destroyer has been ordered to Puerto Cortez, Honduras, to take part in the American military demonstration and to protect United States property.

One American has been wounded in the fighting at Ceiba, but his name has not been learned.

JOINT GAINS AS TAX LAW PASSES

Insurgent Coalition With Democrats Smashed, G. O. P. Claim

WASHINGTON, March 1.—Political leaders in the House were counting on their losses and gains following the passage of the tax reduction bill.

Republican leaders admitted a defeat of the Mellon plan but boasted they had broken the umphant insurgent-Democratic coalition and had passed a Republican bill.

Democratic leaders assert they ceded the Republicans to accept principle their form of the tax reduction. They claim to have secured into the legislation a gift of increased inheritance taxes of other means to pay a soldiers' bonus.

Insurgent leaders take to themselves credit for the defeat of the Mellon plan and adoption of a bill on income tax reduction directly contrary to that urged by Secretary Mellon, including the 1-2 per cent maximum surtax instead of the 25 per cent, and the lower rates on the smaller incomes. Their greatest triumph, they contend, is that in forcing the regular Republicans to compromise with them they succeeded in holding intact their organization for future legislative accomplishments.

BOASTS DEVOTION TO MONARCHISM

German Veteran In Treason Trial Tells Undying Faith In Crown

MUNICH, March 1.—Monarchism was openly defended at the Ludendorff-Hitler high treason trial today when Captain Ernest Roehm, one of the ten defendants, took the witness stand in his own behalf. Captain Roehm boasted of his "undying faith" in the crown.

Roehm, a 56-year-old soldier, was to be one of the officers in the Hitler army which planned to march upon Berlin after the famous "beer cellar putsch" here last November.

"There is no reason why I should defend myself," he declared curtly from the stand. "I feel free from guilt. I would do the whole thing over again."

Leap Year Baby Born To Glendale Family

Old Father Stork did not intend to let Glendale go unnoticed yesterday, February 29, the "leap" day of the leap year, so along about 6 o'clock last evening he arrived at the Glendale Sanitarium and Hospital with a son for Mr. and Mrs. G. O. Dugan of 5156 Maywood avenue.

CHILD DEAD AS RESULT OF DRESS IGNITING

Woman Sees Youngster on Fire and Makes Effort To Save Her Life

Playing with matches, Adelaide Henry, age 5, a beautiful golden-haired girl, yesterday afternoon became a human corch. Today she is dead, a victim of the innocence of the danger of fire.

The sparkle of flaring matches delighted the heart of little Adelaide Henry, daughter of Mr. and Mrs. William Henry of 146 North San Fernando road, and yesterday afternoon, unawares to her parents, she took a box of matches into the yard and was lighting them in childish glee, when her dress became ignited and she received burns all over her body, resulting in her death early this morning, Saturday, March 1, 1924, at the Glendale Sanitarium and Hospital.

Woman Sees Tragedy According to Mrs. W. N. Bean of 146 North San Fernando road, she looked out of the window yesterday afternoon, when suddenly, to her horror, she saw little Adelaide appear around the corner of her house with her clothes in flames.

Running to the child, Mrs. Bean smothered the flames and with the help of others rushed Adelaide to the Glendale Sanitarium and Hospital.

It was found by attending physicians that practically every inch of the child's body had been severely burned.

Although suffering intense pain the little girl was conscious and told her father and mother that she had taken the matches into the yard of their home to play with and was striking match after match when her dress caught fire.

Proves Great Shock Adelaide was a beautiful golden-haired little girl and the tragedy that resulted from her childish pleasure and innocence of the danger of fire is a great shock to her parents and their friends.

Because the child was able to give an account of how the accident occurred there will be no inquest held.

Funeral services will be held at 2 o'clock Monday afternoon in the chapel of the Jewel City Undertaking company on North Brand boulevard, and interment will follow in Forest Lawn Memorial park.

URGES NAVAL BASE

WASHINGTON, March 1.—The Alameda site for a naval base in San Francisco bay is vital to the needs of the navy, Rear-Admiral L. G. Gregory, chief of the bureau of yards and docks, today told the House naval affairs committee.

LATEST NEWS

SAN DIEGO ELECTION INVALID, CLAIM SAN DIEGO, March 1.—A decision to the effect that the provisions of the state law had not been complied with in a municipal election held in San Diego in April, 1921, was filed today in the second district court of appeals, division one. The decision reverses the judgment of the superior court of San Diego which granted a writ of mandate to Mary Clarke Lowry, directing the council to sell bonds to cover a bond issue which had received a two-thirds majority vote.

LA FOLLETTE WILL NOT BE CANDIDATE WASHINGTON, March 1.—Senator Robert M. La Follette, Republican, of Wisconsin, this afternoon announced he would not become a candidate for the presidential nomination. La Follette made this announcement in a letter to C. J. Olson, chairman of the La Follette campaign committee of North Dakota, explaining his action in withdrawing from the Republican primary in that state.

IOWA TAKES HIGH HONOR AT STATES DINNER

More Than 500 Persons at Presbyterian Church's Unique Banquet

The "All States" dinner, served last night by the women of the First Presbyterian church in their new banquet hall, with 500 covers laid, all the guests being seated at one time, will go down in church history as the biggest thing in its line ever done in the city.

Only an eye-witness could comprehend the real immensity of the undertaking which proved a phenomenal success from every standpoint.

The patriotic motif predominated in decorations, with an American flag displayed, and the ceiling lights were decorated with streamers of red, white and blue, the "states" idea being carried out in a clever and original manner.

Bear and Poppies California was centered with a realistic bear, which shared honors with golden poppies; Pennsylvania, with a keystone, and Iowa, with spring flowers.

Oklahoma had a covered wagon labeled "California or Bust"; Texas, a magnificent set of "long horns"; Missouri, a "hound dog" with a placard, "Better quit kickin' my dog around"; Colorado, a century plant; Georgia, a log cabin and Aunt Dinah, in miniature; Indiana, volumes of the works of James Whitcomb Riley, and a doll garbed as "Raggedy Ann"; New Jersey, violets; New York, roses; Dakota, an Indian; Washington, pines and lumber; Oregon, apples; Minnesota, a fort; Wisconsin, copper; Massachusetts, "Beans."

Immigrant Members A unique arrangement was the immigrant table, with covers at one section for the guests from Canada. The remaining places were occupied with guests from Ireland, England, Scotland, Russia, Norway and Switzerland, with a total of forty covers. Canadians were happy around the Canadian flag, while the immigrants were facing dolls dressed in costumes of natives of different countries, with Irish Pat in the place of honor.

H. L. Finlay presided as master of ceremonies, and a most interesting program was presented. (Continued on Page 7)

Tax Reduction Bill In Senate Committee

WASHINGTON, March 1.—The 1924 tax reduction bill was laid before the Senate this afternoon.

Following its passage by the House the bill was transmitted to the Senate and immediately referred to the finance committee, which will prepare the measure for the Senate's consideration.

DOES THE BAYING OF THE OIL HOUNDS PORTEND ANOTHER POLITICAL DEATH?



FOREST FIRE IN CANYON CHECKED

Blaze Threatened Resorts Near San Bernardino, 500 Fight Fire

SAN BERNARDINO, March 1.—Making a desperate last stand against the onrush of a raging forest fire which was sweeping rapidly toward three large resorts in the mountains north of here, more than 500 fire fighters succeeded, shortly before midnight, in controlling the fire, according to reports brought here this morning.

The fire was halted when it had reached to within a quarter of a mile of the municipal playground of San Bernardino, the first of the three resorts threatened.

More than 250 men are still on guard in event the fire breaks out again today. Fifteen hundred acres of San Bernardino's Devil canyon watershed timber was burned over by the fire which is reported to have started when an automobile caught fire and plunged over a 300-foot embankment into a creek bed.

U. S. Prosecutor May Probe Hospital Deal

SAN FRANCISCO, March 1.—Department of Justice officials declined to confirm a report today that John W. Crim, special prosecutor in the Veterans' Bureau cases, will come here from Chicago upon completion of the government's cases there to lay before a federal grand jury here evidence in connection with the Livermore hospital deal.

It was reported, however, that preparations were under way for his coming and that evidence assembled through a special department of justice investigation following the congressional probe was ready for grand jury presentation.

Favorable Report on \$200,000,000 Bill To Help Out Farmers

WASHINGTON, Mar. 1.—The McNary-Haugen bill creating a \$200,000,000 agricultural export corporation, was reported favorably to the Senate this afternoon by the Senate agricultural committee.

The bill would authorize the export corporation to purchase agricultural commodities during periods of farm depression for ultimate sale in foreign markets. The period of depression would be determined by presidential proclamation as "emergency" prices to be paid by the corporation would be based on a ratio price of \$1.60 a bushel for wheat.

Merchant's Daughter, Ill, Leaps to Death

CHICAGO, March 1.—Ruth Hillman, 25, daughter of Edward Hillman, department store owner, leaped to her death from the Hillman suite at the Belmont hotel early today. She was said to be in ill-health.

JAPS TO OPPOSE ELDER STATESMEN

Plan to Enlarge Number of Genro Group to Start Fight in Nation

TOKIO, March 1.—The death of Prince Masayoshi Matsukata this morning brought up today the question of enlarging the group of men surrounding the emperor and known as the elder statesmen.

Any move to enlarge and continue this system of genro or elder statesmen will face the strongest national opposition. Under it, two or three men practically decide the government of Japan, picking the premiers.

Leaves Large Family

Prince Seionji, the remaining living genro, will choose others to fill the places of Princes Matsukata and Yamagata and others who have died before. The emperor and empress were represented today at the death bed of Prince Matsukata. The Matsukata family is one of the largest in all Japan, the prince having had numerous wives and between forty and fifty children.

Evening News Demonstrates Its Business Getting Power

February has been a big month for The Glendale Evening News. The business-getting power of this 100 per cent for Glendale daily newspaper has been demonstrated more emphatically than ever before.

In the month of February The Evening News carried 26,383 inches of display advertising—that being more than 1,000 inches in the lead of any other newspaper in Glendale. In the same period of time The Evening News carried 9,649 inches of classified—that being 3,173 inches in the lead of any other newspaper in Glendale.

The business-getting power of The Evening News is so thoroughly recognized by advertisers that it is a matter of record that this paper has had the distinction of leading in amount of monthly advertising in all of its history.

CLAIM CHIEF OF BUREAU REVEALED SECRETS

Investigator Makes Denial Of Charge; Daughtery Will Have 'Trial'

BULLETIN WASHINGTON, March 1.—Investigation of the official acts of Attorney-General Harry M. Daughtery, whose resignation has been demanded in Congress, was ordered this afternoon by the Senate, after two weeks of sharp political debate concerning his alleged connection with the naval oil scandal.

The inquiry will be made by a special Senate committee, the personnel of which will be selected by the Senate instead of by the presiding officer, as is customary.

WASHINGTON, March 1.—William J. Burns, internationally known detective and chief of the bureau of investigation for the department of justice, was today drawn into the great oil lease scandal.

It is declared Burns "tipped off" information to E. B. McLean, wealthy newspaper publisher and his employes in Washington. Burns denies the charge.

Also, it became known today that McLean is a duly accredited agent of the department of justice, it was learned officially.

Possesses Shield McLean, whose secret telegrams have been under scrutiny by the Senate investigating committee for ten days, is known as a "dollar a year man." It was revealed today. He possesses a shield and an operative's credentials.

These facts came to light today on the heels of the discovery by the Senate committee that some of the telegrams exchanged between McLean and his employes in their efforts to prevent the publisher's appearance before the investigating committee were couched in a department of justice cipher.

Woman Is Agent It was also disclosed today that Mrs. Mary Duckstein, wife of one of McLean's confidential employes, until a few months ago, was employed by the bureau of investigation of the department and that she is still on the rolls of the department as an agent.

Duckstein was the sender of many of the telegrams which the committee has been examining. After spending an hour in explanation. (Continued on Page 7)

VICTIM OF PLOT, FORBES ASSERTS

Indicted Veterans' Bureau Head Agrees to Waive Extradition

WASHINGTON, March 1.—Charging he was the victim of a "hell-engineered conspiracy," Colonel Charles R. Forbes, former director of the veterans' bureau, today told International News Service he would waive extradition to stand trial in Chicago on indictments of conspiracy and bribery.

Forbes promised a future sensation by stating he would reveal later the complete details of the work and of individuals involved in the attempted political corruption of the veterans' bureau while he served as director.

The accused director declared the charges against him were based on "perjury," subornation of perjury and the suppression of evidence." The Chicago grand jury which indicted him, he said, "was subjected to the same forces."

The Glendale Evening News
Published Daily Except Sunday
A. T. COWAN
Office of Publication, 133 South Brand Boulevard
PHONE GLENDALE 132

THE GLENDALE EVENING NEWS HAS THE COMPLETE LEASED WIRE REPORT OF THE INTERNATIONAL NEWS SERVICE
Entered as second class matter, January 13, 1922, at the Postoffice at Glendale, Calif., under the Act of Congress of March 3, 1879

OFFICIAL NEWSPAPER OF THE CITY OF GLENDALE
The Glendale Evening News will not be responsible for more than one incorrect insertion of any advertisement ordered for more than one time. It will not guarantee accuracy or assume responsibility for errors occurring in telephone advertisements. No refund will be made on any advertisement ordered cancelled.

GLENDALE, CALIFORNIA, SATURDAY, MARCH 1, 1924

CLASSIFIED ADS
To assure proper classification, copy for classified ads should be in this office before 11:30 a. m. on date of publication.

REAL ESTATE FOR SALE
GLENDALE PROPERTY
LOOK HERE
New 4 room 2-bedroom bungalow. H. W. floors, built-in features. Garage, etc. 1/2 blk. to car. This is only \$5000; \$1000 cash and \$40 per month.

REAL ESTATE FOR SALE
GLENDALE PROPERTY
LOOK HERE
New 4 room 2-bedroom bungalow. H. W. floors, built-in features. Garage, etc. 1/2 blk. to car. This is only \$5000; \$1000 cash and \$40 per month.

REAL ESTATE FOR SALE
GLENDALE PROPERTY
LOOK HERE
New 4 room 2-bedroom bungalow. H. W. floors, built-in features. Garage, etc. 1/2 blk. to car. This is only \$5000; \$1000 cash and \$40 per month.

REAL ESTATE FOR SALE
GLENDALE PROPERTY
LOOK HERE
New 4 room 2-bedroom bungalow. H. W. floors, built-in features. Garage, etc. 1/2 blk. to car. This is only \$5000; \$1000 cash and \$40 per month.

REAL ESTATE FOR SALE
GLENDALE PROPERTY
LOOK HERE
New 4 room 2-bedroom bungalow. H. W. floors, built-in features. Garage, etc. 1/2 blk. to car. This is only \$5000; \$1000 cash and \$40 per month.

REAL ESTATE FOR SALE
GLENDALE PROPERTY
LOOK HERE
New 4 room 2-bedroom bungalow. H. W. floors, built-in features. Garage, etc. 1/2 blk. to car. This is only \$5000; \$1000 cash and \$40 per month.

REAL ESTATE FOR SALE
GLENDALE PROPERTY
LOOK HERE
New 4 room 2-bedroom bungalow. H. W. floors, built-in features. Garage, etc. 1/2 blk. to car. This is only \$5000; \$1000 cash and \$40 per month.

REAL ESTATE FOR SALE
GLENDALE PROPERTY
LOOK HERE
New 4 room 2-bedroom bungalow. H. W. floors, built-in features. Garage, etc. 1/2 blk. to car. This is only \$5000; \$1000 cash and \$40 per month.

REAL ESTATE FOR SALE
GLENDALE PROPERTY
LOOK HERE
New 4 room 2-bedroom bungalow. H. W. floors, built-in features. Garage, etc. 1/2 blk. to car. This is only \$5000; \$1000 cash and \$40 per month.

REAL ESTATE FOR SALE
GLENDALE PROPERTY
LOOK HERE
New 4 room 2-bedroom bungalow. H. W. floors, built-in features. Garage, etc. 1/2 blk. to car. This is only \$5000; \$1000 cash and \$40 per month.

REAL ESTATE FOR SALE
GLENDALE PROPERTY
LOOK HERE
New 4 room 2-bedroom bungalow. H. W. floors, built-in features. Garage, etc. 1/2 blk. to car. This is only \$5000; \$1000 cash and \$40 per month.

REAL ESTATE FOR SALE
GLENDALE PROPERTY
LOOK HERE
New 4 room 2-bedroom bungalow. H. W. floors, built-in features. Garage, etc. 1/2 blk. to car. This is only \$5000; \$1000 cash and \$40 per month.

REAL ESTATE FOR SALE
GLENDALE PROPERTY
LOOK HERE
New 4 room 2-bedroom bungalow. H. W. floors, built-in features. Garage, etc. 1/2 blk. to car. This is only \$5000; \$1000 cash and \$40 per month.

REAL ESTATE FOR SALE
GLENDALE PROPERTY
LOOK HERE
New 4 room 2-bedroom bungalow. H. W. floors, built-in features. Garage, etc. 1/2 blk. to car. This is only \$5000; \$1000 cash and \$40 per month.

REAL ESTATE FOR SALE
GLENDALE PROPERTY
LOOK HERE
New 4 room 2-bedroom bungalow. H. W. floors, built-in features. Garage, etc. 1/2 blk. to car. This is only \$5000; \$1000 cash and \$40 per month.

REAL ESTATE FOR SALE
GLENDALE PROPERTY
LOOK HERE
New 4 room 2-bedroom bungalow. H. W. floors, built-in features. Garage, etc. 1/2 blk. to car. This is only \$5000; \$1000 cash and \$40 per month.

REAL ESTATE FOR SALE
GLENDALE PROPERTY
LOOK HERE
New 4 room 2-bedroom bungalow. H. W. floors, built-in features. Garage, etc. 1/2 blk. to car. This is only \$5000; \$1000 cash and \$40 per month.

REAL ESTATE FOR SALE
GLENDALE PROPERTY
LOOK HERE
New 4 room 2-bedroom bungalow. H. W. floors, built-in features. Garage, etc. 1/2 blk. to car. This is only \$5000; \$1000 cash and \$40 per month.

REAL ESTATE FOR SALE
GLENDALE PROPERTY
LOOK HERE
New 4 room 2-bedroom bungalow. H. W. floors, built-in features. Garage, etc. 1/2 blk. to car. This is only \$5000; \$1000 cash and \$40 per month.

REAL ESTATE FOR SALE
GLENDALE PROPERTY
LOOK HERE
New 4 room 2-bedroom bungalow. H. W. floors, built-in features. Garage, etc. 1/2 blk. to car. This is only \$5000; \$1000 cash and \$40 per month.

REAL ESTATE FOR SALE
GLENDALE PROPERTY
LOOK HERE
New 4 room 2-bedroom bungalow. H. W. floors, built-in features. Garage, etc. 1/2 blk. to car. This is only \$5000; \$1000 cash and \$40 per month.

REAL ESTATE FOR SALE
GLENDALE PROPERTY
LOOK HERE
New 4 room 2-bedroom bungalow. H. W. floors, built-in features. Garage, etc. 1/2 blk. to car. This is only \$5000; \$1000 cash and \$40 per month.

REAL ESTATE FOR SALE
GLENDALE PROPERTY
LOOK HERE
New 4 room 2-bedroom bungalow. H. W. floors, built-in features. Garage, etc. 1/2 blk. to car. This is only \$5000; \$1000 cash and \$40 per month.

REAL ESTATE FOR SALE
GLENDALE PROPERTY
LOOK HERE
New 4 room 2-bedroom bungalow. H. W. floors, built-in features. Garage, etc. 1/2 blk. to car. This is only \$5000; \$1000 cash and \$40 per month.

REAL ESTATE FOR SALE
GLENDALE PROPERTY
LOOK HERE
New 4 room 2-bedroom bungalow. H. W. floors, built-in features. Garage, etc. 1/2 blk. to car. This is only \$5000; \$1000 cash and \$40 per month.

REAL ESTATE FOR SALE
GLENDALE PROPERTY
100x181 WEST WINDSOR
Fine 6-room home, 3 bedrooms, oak floors, fireplace, large garage, lot 100x181 to an alley making a wonderful court or apt. house site. Close to transportation and schools. It has 12 fruit trees; all kinds of shrubbery and chicken equipment for over 500; street work paid. Price only \$11,000 with \$4000 cash, balance arranged Open Sunday. See MR. SWEAT or BARNEY J. E. WARREN, Realtor

REAL ESTATE FOR SALE
GLENDALE PROPERTY
OUR BEST BUY
WE WOULD LIKE TO SHOW YOU OUR BEST BUY IN A COZY HOME—NEAR NEW HIGH SCHOOL—CLOSE TO STREET CARS—TWO LARGE PEPPER TREES—HOUSE HAS COLONIAL FRONT—5 LARGE ROOMS—EXTRA LARGE, CONVENIENT BATH ROOM—THE WALL PAPERING THROUGHOUT IS WELL CHOSEN AND REALLY BEAUTIFUL—THE ELECTRICAL FIXTURES GERMAN SILVER—THE FIREPLACE BATHELEIGH TILE—AN ADDITIONAL BED ROOM CAN BE EASILY ADDED WITHOUT SPOILING ANYTHING—PRICE \$3250—SEE THIS TODAY—\$500, WITH \$3000 DOWN.

REAL ESTATE FOR SALE
GLENDALE PROPERTY
APARTMENT HOUSE
Showing 2% on total investment. Just one block from main street of town. 24 single apartments and 2 single rooms. Completely furnished. Lot 50x150 to alley. Actual income \$1227 per month. Total price \$45,000. Only \$20,000 cash to handle and balance very easy. Let us prove to you how to pay out with income above.

REAL ESTATE FOR SALE
GLENDALE PROPERTY
AN INVESTMENT WORTH WHILE
SOUTH BRAND BUSINESS LOT
with two houses. Located where values are rapidly increasing. Lot 50x125 to alley. Price \$6000. Only \$6000 CASH. Balance 12 and 3 years.

REAL ESTATE FOR SALE
GLENDALE PROPERTY
SEE THESE HOMES BEFORE YOU BUY
One new 4-room stucco, large living and dining room, combined, 2 bedrooms, big closets, modern bath room, large kitchen, lots of cupboards, garage, corner lot.

REAL ESTATE FOR SALE
GLENDALE PROPERTY
NOTHING BUT GLENDALE'S BEST BARGAINS IN THIS SPACE
INCOME: Elegant new stucco 5-room duplex and bungalow in the 600 block north; fine neighborhood all built up; rent \$187.50 or 14%. You won't look any farther when you see this. Terms if desired.

REAL ESTATE FOR SALE
GLENDALE PROPERTY
MRS. M. L. TIGHT
510 N. Glendale Ave. Phone Glendale 1657

REAL ESTATE FOR SALE
GLENDALE PROPERTY
PUBLIC SCHOOL SITE
SELECTED AT MAGNOLIA PARK BY BURBANK SCHOOL BOARD

REAL ESTATE FOR SALE
GLENDALE PROPERTY
DOUBLE TIME "MARCH"
If you want this. Some say bargains, snags, gifts, sacrifices, niceties, and many other pet names—but this is a combination of them all. If not sold by March 3, I will buy it myself, and then it will cost you some more. It is an 8-months-old bungalow that is underpriced \$1000, for quick sale. You Glendale avenue. Worth \$11,000, will sell for \$7000. Will take any good lot in trade.

REAL ESTATE FOR SALE
GLENDALE PROPERTY
A PETITE ONE
A 3-room modern and up-to-date new HOME. Not a garage! On rear of a 50x150 lot. Lot worth \$2800—newly finished with brick floor, call on me, or if you're totally and permanently disabled, crawl to the phone and I will call on YOU.

REAL ESTATE FOR SALE
GLENDALE PROPERTY
THE EARL REAL ESTATE COMPANY
1262 S. Brand (Cor. Cypress) Glendale 331-M

REAL ESTATE FOR SALE
GLENDALE PROPERTY
INVESTMENT
4 cottages, 2 double garages, land 76x147, \$100 monthly rent, \$5250—\$2500 cash. Bal monthly. Glendale 2374-R.

REAL ESTATE FOR SALE
GLENDALE PROPERTY
LEAVING GLENDALE
Got to sell bungalow. Three rooms and bath. Rent on several lot screen porch and garage, all modern. \$1500 will handle, or will take good car on account of \$1000. 837 Fischer St.

REAL ESTATE FOR SALE
GLENDALE PROPERTY
BUY DIRECT FROM OWNER
Beautiful 5 room home, hardwood floors throughout; large rooms and closets; the best built-in features; one block to school; lawn, flowers and shrubbery; chicken house and yard; lot alone worth \$1500. Call on account of \$1000. Health. The price is \$10,000; terms can be arranged. 610 N. Jackson St.

REAL ESTATE FOR SALE
GLENDALE PROPERTY
BEST INVESTMENT IN GLENDALE
2 Story Stucco Duplex 4-room bungalow in rear. This unusually attractive income property is located on lot 50x170 to alley, at 1234 South Brand Street. We do not believe \$20,000 could duplicate it, and you can have it for \$14,000. TERMS

REAL ESTATE FOR SALE
GLENDALE PROPERTY
HAYWARD & McCARTNEY REALTORS
142 So. Brand Glendale 1965 1310 So. Brand Glendale 1151

REAL ESTATE FOR SALE
GLENDALE PROPERTY
BRAND BOULEVARD BUSINESS CORNER
6-room modern bungalow, all large rooms, 2 bedrooms, breakfast room, hardwood floors, rear fire place, built-in effects, front and side porch, screen porch with laundry tray, large garage. Good location. Price \$8000.

REAL ESTATE FOR SALE
GLENDALE PROPERTY
WONDERFUL VALUE
Large 6-room house and screen porch, 3 bedrooms, hardwood floors, laundry trays, heater, garage; lawn. Lot 167 ft. deep. Worth \$5500. Price for quick sale \$4250. \$1500 down. Call Gl. 2150-J-3 at once.

REAL ESTATE FOR SALE
GLENDALE PROPERTY
FOR SALE BY OWNER
New, modern 4-room bungalow; large living room, 2 bedrooms, modern; built-in buffet, book cases, bath and other built-in features. Best of H. W. floors throughout. Garage, 1 1/2 blk. to school. N. W. section. Small down payment. Balance \$1000. Call on Mr. L. D. Sargent, 1138 San Rafael Ave., North Glendale.

REAL ESTATE FOR SALE
GLENDALE PROPERTY
MAN NEEDS MONEY
To complete another building. Must sell two bungalows on nice cor. lot, west side of 100th St. 2 1/2 blk. to school, \$2500 cash, bal. \$4000 easy terms. Act quick. Box 105, Glendale News.

REAL ESTATE FOR SALE
GLENDALE PROPERTY
HAYWARD & McCARTNEY REALTORS
142 So. Brand Glendale 1965 1310 So. Brand Glendale 1151

REAL ESTATE FOR SALE
GLENDALE PROPERTY
FOR SALE BY OWNER
New, modern 4-room bungalow; large living room, 2 bedrooms, modern; built-in buffet, book cases, bath and other built-in features. Best of H. W. floors throughout. Garage, 1 1/2 blk. to school. N. W. section. Small down payment. Balance \$1000. Call on Mr. L. D. Sargent, 1138 San Rafael Ave., North Glendale.

REAL ESTATE FOR SALE
GLENDALE PROPERTY
WONDERFUL VALUE
Large 6-room house and screen porch, 3 bedrooms, hardwood floors, laundry trays, heater, garage; lawn. Lot 167 ft. deep. Worth \$5500. Price for quick sale \$4250. \$1500 down. Call Gl. 2150-J-3 at once.

REAL ESTATE FOR SALE
GLENDALE PROPERTY
FOR SALE BY OWNER
New, modern 4-room bungalow; large living room, 2 bedrooms, modern; built-in buffet, book cases, bath and other built-in features. Best of H. W. floors throughout. Garage, 1 1/2 blk. to school. N. W. section. Small down payment. Balance \$1000. Call on Mr. L. D. Sargent, 1138 San Rafael Ave., North Glendale.

REAL ESTATE FOR SALE
GLENDALE PROPERTY
MAN NEEDS MONEY
To complete another building. Must sell two bungalows on nice cor. lot, west side of 100th St. 2 1/2 blk. to school, \$2500 cash, bal. \$4000 easy terms. Act quick. Box 105, Glendale News.

REAL ESTATE FOR SALE
GLENDALE PROPERTY
FOR SALE BY OWNER
New, modern 4-room bungalow; large living room, 2 bedrooms, modern; built-in buffet, book cases, bath and other built-in features. Best of H. W. floors throughout. Garage, 1 1/2 blk. to school. N. W. section. Small down payment. Balance \$1000. Call on Mr. L. D. Sargent, 1138 San Rafael Ave., North Glendale.

REAL ESTATE FOR SALE
GLENDALE PROPERTY
WONDERFUL VALUE
Large 6-room house and screen porch, 3 bedrooms, hardwood floors, laundry trays, heater, garage; lawn. Lot 167 ft. deep. Worth \$5500. Price for quick sale \$4250. \$1500 down. Call Gl. 2150-J-3 at once.

REAL ESTATE FOR SALE
GLENDALE PROPERTY
FOR SALE BY OWNER
New, modern 4-room bungalow; large living room, 2 bedrooms, modern; built-in buffet, book cases, bath and other built-in features. Best of H. W. floors throughout. Garage, 1 1/2 blk. to school. N. W. section. Small down payment. Balance \$1000. Call on Mr. L. D. Sargent, 1138 San Rafael Ave., North Glendale.

REAL ESTATE FOR SALE
GLENDALE PROPERTY
MAN NEEDS MONEY
To complete another building. Must sell two bungalows on nice cor. lot, west side of 100th St. 2 1/2 blk. to school, \$2500 cash, bal. \$4000 easy terms. Act quick. Box 105, Glendale News.

REAL ESTATE FOR SALE
GLENDALE PROPERTY
FOR SALE BY OWNER
New, modern 4-room bungalow; large living room, 2 bedrooms, modern; built-in buffet, book cases, bath and other built-in features. Best of H. W. floors throughout. Garage, 1 1/2 blk. to school. N. W. section. Small down payment. Balance \$1000. Call on Mr. L. D. Sargent, 1138 San Rafael Ave., North Glendale.

AUTOMOBILE SECTION

Willys-Knight Great For Driving On Grades

U. S. LEADING ON SALES ABROAD

Quantity Turnout of Quality Autos Is Explanation Of Supremacy

By H. S. VANCE, Sales Manager, The Studebaker Corporation.

The ability to produce quality cars on a quantity basis is the underlying reason why the United States leads the nations of the world in the manufacture of automobiles. American cars, with few exceptions, compete successfully with the automobiles of the country into which they are shipped, and even in one or two countries, where seriously handicapped by high import duties, many American cars are sold.

Nearly 84 per cent of all the motor vehicles registered in the world in 1922 were manufactured in this country. Although final figures are not yet available, it is conservative to say that, with the large increase in American automobile production in 1923, approximately 90 per cent of all automobiles now registered in the world have been made in the United States.

American exports of motor vehicles in 1922 represented 40 per cent of the entire production of motor vehicles by all other countries in the world for the same year. American exports in that year were 78,234—more than doubling those of the previous year—and figures for 1923 will show a large increase over 1922. American cars enjoy many advanced features of construction

(Continued on Page 3)

Motorists Warned Deadline Is Set On Old License

A final call to California motorists to make application for their 1924 license plates was issued today by Will H. Marsh, chief of the Division of Motor Vehicles. Applications forwarded to the division later than midnight of today, Saturday, March 1, will not be honored unless a sum equal to the amount of the fee is added as a penalty, it was announced. Applications for plates may be presented in person at Sacramento up to 5 o'clock today or at any of the branches of the division up to 5:30 o'clock.

Technically every motorist who operated on the public highways during the month of February, without a 1924 license, was guilty of a misdemeanor but a period of thirty days' grace was allowed by the division in order to give motorists a chance to get their applications in. Marsh stated today that March 1 was positively the "dead line" and that traffic officers, beginning next week, would be instructed to arrest every person not able to prove he has made application.

COVERS FOR FENDERS

To avoid the possibility of oiling and scratching the fenders of a car while in the shop, especially when working on the engine, covers made from top material should be used. The material should have a rubber covering on one side so that the grease will not soak through and flaps which can be fastened to the sides of the fenders. To hold them in place, flat spring steel clips can be made similar to paper clips.

News Want/Ads for results.

FOUR SPEED DEMONS TO COMPETE

Haugdahl, Duray, Horey and Leckleder Will Thrill Ascot Speed Fans

LOS ANGELES, Mar. 1.—A "Quadrangular Championship Match" between Sig Haugdahl, world's speed king; Leon Duray, noted French speed ace; Fred Horey, 1923 national dirt track champion; and Fred Leckleder, famous eastern pilot and a great Ascot favorite, will be the feature of next Sunday's Ascot program, instead of a match between Sig Haugdahl and Ralph DePalma.

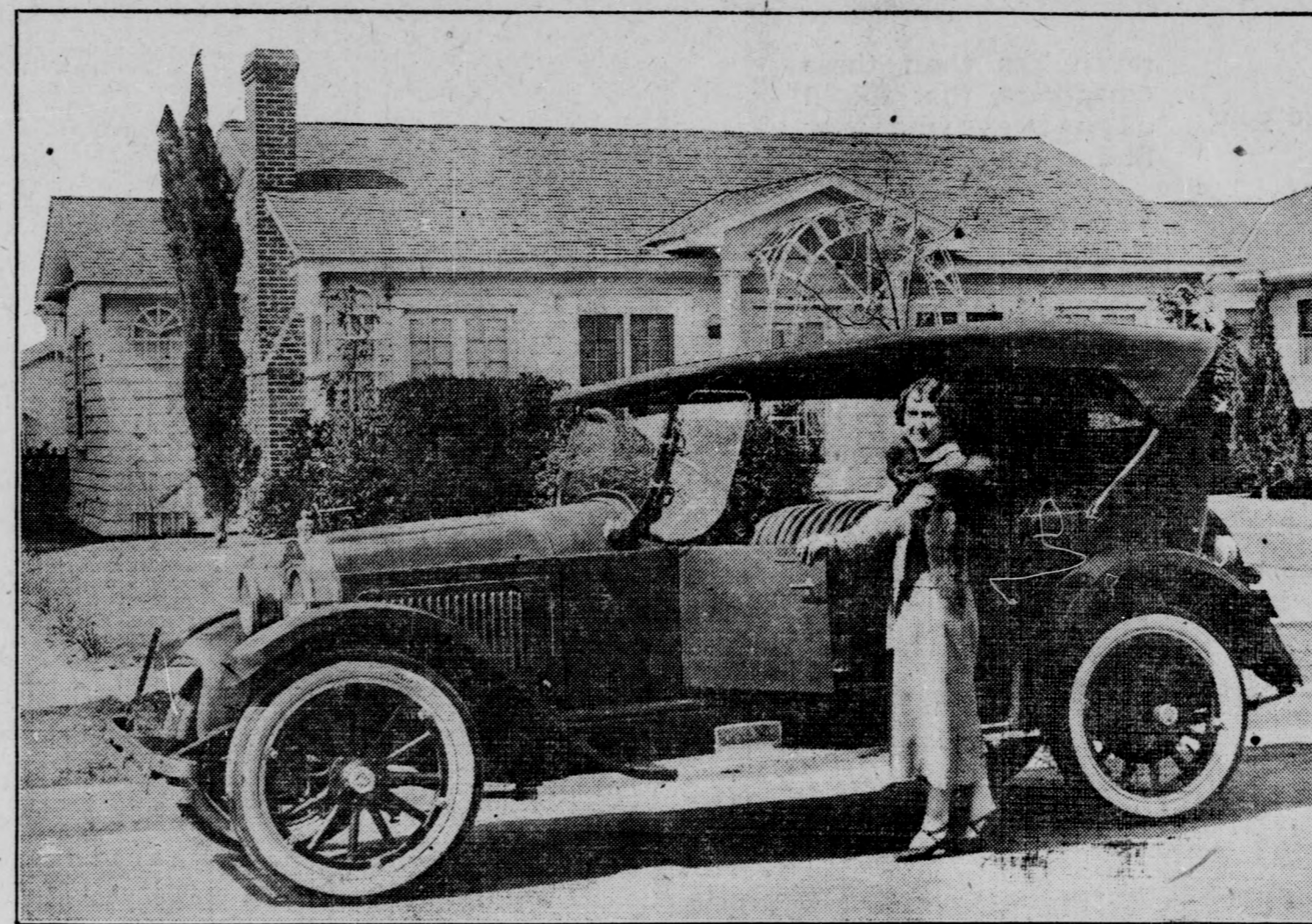
A spell of temperament on the part of DePalma, according to the calling off of negotiations for the Italian-Scandinavian speed battle, DePalma tells a different story, alleging that Haugdahl insisted on running in a "ringer" on him. The car Haugdahl desired to use is his Italian Grand Prix Fiat, which is over-sized in piston displacement, insofar as the regulations of the I. M. C. A. are concerned.

Balks on Big Car

DePalma expressed a willingness to allow "Hug" to use a car of 183 cubic inches displacement while his Miller is but 122 inches, but the Fiat being quite some inches removed from the displacement of the trim Miller, caused DePalma to balk. In any event, Bentel became peeved at the hitch in the technical end of the proposed match and threw away a lot of printing he had

(Continued on page 4)

Mountain Roads Fail To Halt This Car and Woman Driver



—Photo by E. A. Worley.

Here's a picture of Mrs. Jack Wagnon, realty dealer and representative of the Valley Finance & Mortgage company, taken in front of her home at 529 North Jackson. She has had her Willys-Knight, purchased from Smith-Sloan, for more than a year, and is highly pleased with its performance on level roads and grades. She tells The Glendale Evening News of a "wonder trip" for drivers who are not nervous.

HILLS PROVE VERY EASY TO CLIMB

Mrs. Jack Wagnon Pleased With Car's Performance Over Many Months

When it comes to adventure there are none so intrepid as the woman driver—and with a good car the rough roads, the sharp curves and the decided grades over the Tehachapi mountains are naught but pleasure.

So says Mrs. Jack Wagnon, pictured here with her model 64, five-passenger Willys-Knight touring car for which Smith-Sloan, Inc., are dealers at 228 South Brand boulevard.

Good on Grades

Mrs. Wagnon, who is a real estate agent and representative of the Valley Finance & Mortgage company, 211 East Broadway, has had the car for more than a year. Her husband also admires it for mountain driving and he tells of its prowess on the Big Bear grades. The Wagnons reside at 529 North Jackson street.

The Willys-Knight is nearly a year old, but just like new, she tells George Smith, of the agency here. It now averages twenty-one to twenty-three miles per gallon of gas on all roads in Southern California, having done 15,000 miles. You wouldn't think it to look at the picture. The original tires are still in excellent condition, the performance is perfect, and an increase of power in the Knight engine is very noticeable.

(Continued on Page 2)

Here Is Log Of Trip To Bakersfield Via Mojave

Glendale to Bakersfield via Mint Canyon	
Miles	Time
0.	6:00 A. M.—Leave Glendale via San Fernando Road for San Fernando.
15.	6:30 A. M.—San Fernando.
25.	6:55 A. M.—Newhall.
28.	7:02 A. M.—Saugus. (Keep with highway to the right.)
64.	8:17 A. M.—Palmdale via Mint Canyon.
83.5	8:52 A. M.—Lancaster. (Breakfast at the Inn or at Harvey House at Mojave. One hour for meal and rest.)
97.	10:22 A. M.—Mojave. (Dirt road from there on.)
109.	11:00 A. M.—Monolith.
113.5	11:10 A. M.—Tehachapi.
160.	1:00 P. M.—Bakersfield. (Luncheon.)
Bakersfield to Glendale via Ridge Route	
0.	3:00 P. M.—Leave Bakersfield via South Chester avenue.
29.5	3:55 P. M.—Grapevine station.
40.5	5:00 P. M.—Lebec. (Dine with Foster Curry. One hour for meal and rest.)
54.5	6:35 P. M.—Sandberg's.
68.	7:30 P. M.—National Forest Inn.
89.	8:30 P. M.—Saugus.
91.	8:40 P. M.—Newhall. (Watch out for slippery grades.)
102.	9:10 P. M.—San Fernando.
117.	9:50 P. M.—Glendale and home.

Ask Aid of People to Get Auto Thieves

All Southern California is watching with interest the drive in Los Angeles county to round up automobile thieves. This intensive campaign was begun by the sheriff's office, the city police department and the theft bureau of the Automobile Club of Southern California, following reports for January which showed that automobile losses by theft reached their peak in that month.

According to testimony of officers, reducing the number of auto thefts will automatically decrease the number of major crimes, as the first step in a hold-up or burglary is the theft of a motor vehicle for a speedy escape. To stimulate interest, the Automobile Insurance Carriers Theft Prevention Association will pay a minimum reward of \$50 for the arrest and conviction of any automobile thief in Los Angeles county. Heretofore \$25 has been paid for the return of a stolen car, but this reward had little effect in apprehending the thief.

Officers of the law are asking the co-operation of citizens in general in the smashing drive now on against the auto thief. They are urging car owners to provide adequate protection for their cars and to keep their cars locked at all times when not in use. An ignition switch is only a partial preventive for the experienced auto thief.

Electric Oil Gauge Proves Its Worth

An oil gauge which is attached to one of the pet cock openings in the crankcase will indicate the amount of oil carried, but at night, when the gauge cannot be easily seen, the car owner is inclined to take a chance. Again, on a long trip, the oil may be consumed more rapidly than expected, with the result that the oil drops below the safe level. A gauge that gives a warning when the oil line drops may be made from a U-shaped piece of flat metal fastened to the gauge so that the flat pin passes through it. The colored ball usually found on such gauges is replaced by a metal disc. The U piece carries two screws which serve to hold the light wire. These screws are so located that the metal disc, on lowering, forms an electrical contact between them. A small red light on the dash issues the warning signal.

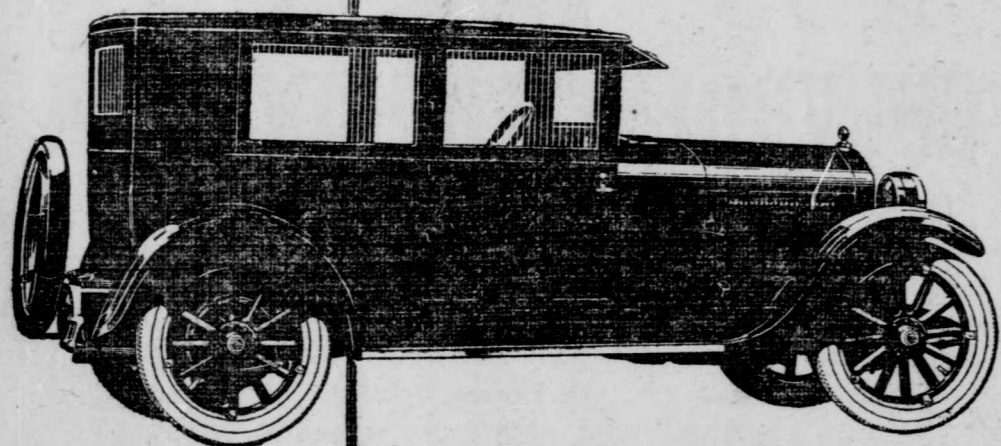
KEEP TANK VENT OPEN

The cap of the gasoline tank filler has in it a small hole—if the gasoline system is of the gravity feed type. This is to allow air to enter the tank so that the gasoline flowing out will not leave a vacuum, which will finally become so strong as to stop the flow of gasoline to the car-

buretor. When gasoline fails to reach the carburetor at any time, make sure that this vent is open before looking for stoppage.

The NewESSEX

A SIX—Built by Hudson



We Ask This Simple Test

It is an easy way to tell if the new Essex Coach gives greater value than was ever provided at this price.

Take a ride. It has answered the question for thousands. Priced \$170 lower, the new Essex Coach provides a larger, handsomer body, with even greater passenger comfort than the former Coach.

And its 6-cylinder motor, built by Hudson, gives the smoothness of performance for which the Super-Six is famous.

Has Qualities of Both Hudson and the Former Essex

Steering is as easy as guiding a bicycle. Note how comfortably and safely it holds even the roughest roads at all speeds.

Gasoline, oil and tire mileage are exceptional. A further satisfaction is the low cost at which all replacement parts are sold.

The Coach \$975

Touring Model—\$850
Freight and Tax Extra

A 30 Minute Ride Will Win You

KELLEY MOTOR COMPANY

230 No. Brand Blvd. Phone Glen. 837 Glendale, California

Have you ordered your Ford?

Last year 350,000 buyers waited for delivery.

Insure yourself against delay this spring by placing your order for a Ford Car now.

See the Nearest Authorized Ford Dealer

Ford Motor Company
Detroit, Michigan

TOURING CAR \$295
F. O. B. Detroit



Starter and Demountable Rims \$25 extra



Gray Coupe \$685

Gray Coach \$785

When Gray Meets Gray

"Hello there!"

"How do you like your Gray Car?"

"I'm sold on it 100 per cent. I didn't think there was any light car which I would be so proud to drive."

"I like mine, too, the spring action is unusually easy and the bodies are particularly comfortable, aren't they?"

"Yes, and the cost of operating them is so

much less than these other cars, that they'll all buy Grays when they find out about it, I guess."

When Gray meets Gray on the road that's the kind of talk you'll hear. It takes satisfaction in all details of a car to keep a motor wise public sold. Gray closed Cars are selling in ever increasing numbers.

Why not ride in one today and see for yourself?

"Ask for a demonstration."

DIXIE—Packard—Company

Phone Glendale 8888

310 East Broadway

Glendale, Calif.

ASK THE MAN WHO OWNS ONE

Roadster	\$490	Touring	\$520	Coupe	\$685
Coach	\$785	4-Door Sedan	\$835	Truck	\$775

All Prices f. o. b. Detroit



MOTORISTS LOOK ON '13' AS JINX

Many Drivers Return License Plates Because 'Hoodoo' Number Appears

Is the old superstition about 13 being an unlucky number dying out?

Will H. Marsh, chief of the California division of motor vehicles, claims it is not.

And much emphasis on the "not," please, Ignatius.

Marsh further avers that as a believer in the hoodoo sign the average motorist has the sailor backed completely off the map. A special filing case, he says, will be necessary to keep the requests of hundreds of Californians for license plates in which the un- welcome number does not appear.

A Santa Rosa attorney offers a fair sample of many letters received by the department.

Sends Plates Back

"A client of mine asked the branch office of the auto club for two sets of plates in which the number 13 or any combination of numbers making 13 did not occur," writes the attorney. "She was given numbers 419-193 and 419-194. It is easy to see that 13 appears in the first, while in the second 9 plus 4 makes 13. She didn't discover the mistake until she reached home. Now she absolutely fears to use these plates, so I am asking that you exchange them for others in which 13 or its combinations do not occur."

Marsh has been compelled to turn the request down. It's a man-sized order, considering that the numbers run from 1 to more than 1,000,000, and that a little addition on nearly any one of them would produce 13.

One Man Unafraid

Recently a series of plates beginning with the number 13 was unpacked for distribution at the counter in Sacramento. So many motorists refused to accept them that the division officials were forced to turn the obnoxious plates over to the mailing department and get another series for counter distribution. Numerous complaints through the mails followed this action.

There is one man in the state, however, who has no qualms about this number, and that is Senator Sam Shortridge. Shortridge is the holder of license number 13 and considers it lucky.

Each year Shortridge requests the number. He gets it without difficulty.

"I kept it myself for four years because nobody else wanted it," Marsh explained today. "Then the senator came along and I got rid of it."

WILLYS-KNIGHT'S POWER IS PROVEN

Makes Mountain Grades In Easy Style and With Complete Comfort

(Continued from page 1) able with usage. The engine has not been touched.

Not for Nervous Ones

"If I were suggesting a full day's trip for a woman driver who wanted the thrills of springtime," said Mrs. Wagon yesterday, "it would be to Bakersfield via Mt. Canyon, Mojave and Tehachapi and back over the Ridge route in the early evening. It is not a trip for nervous drivers or light cars, but the Willys-Knight clings to the road and takes the curves with ease.

"The perfected cooling system assures one of no engine trouble if the car is treated with any consideration, and one need have no fear of going through the desert or the Inyo country when the climate is most ideal. One should leave early in the morning, however, as the accompanying log indicates, to make the trip most worthwhile.

Into Rarified Air

"Out the San Fernando road one glides through Burbank, San Fernando, Newhall and Saugus in a few minutes and is soon climbing to the Antelope valley and the rarified air of the great Mojave desert. Once at Palmdale the engine purrs like a kitten, giving the utmost of efficiency and economy.

"Leaving Mojave behind, after breakfast at the Harvey House, if hunger has not overtaken you at Lancaster, the car then serves good meals, the long stretch of mountain road is ahead. Some of it is cut from the solid rock, twisting and winding through the Tehachapi mountains, through the several small communities, and finally coming out into the southernmost end of the San Joaquin valley.

"And then Bakersfield, Kern county seat and oil town, comes along for a big stop, where luncheon and rest and perhaps a visit with friends. It seems difficult to call it a day and start away at 3 o'clock, but it is best to avoid later driving over the Ridge route unless you are well acquainted with conditions.

Test for Engine

"If there is a place where an engine is tested it is the Grapevine grade thirty miles south of Bakersfield. But it doesn't matter with a Willys-Knight. Other cars will be seen stalled along the roadside, cooling an overheated engine, sometimes.

"Again in the mountains Lebec with its hotel for a dinner dance comes along like a song and after an hour you will speed away refreshed and ready for the healthy work of piloting your car over the real ridge. Curves and more curves, with a fifteen-mile speed limit strictly enforced, bring you back to the San Fernando valley, and if you are fortunate the clock in the tower here will be chiming 10 o'clock as you arrive home.

"Of course you could make a quicker trip, but it isn't advisable. And you would not be able to appreciate nature's wonders such as a sunrise and sunset, apple blossoms and the green bonnet of springtime. It is a trip almost too good to be true, one believes.

"And it is going to be much more pleasant when we get our next car—a Willys-Knight sedan."

FORD'S EMPLOYEES NUMBER 157,000

Country's Prosperity Shown by Figures; 24,000 Work in Branch Plants

Employment in the Ford Motor Company organization is now at the highest point in the company's history and reflects in a general way the prosperous condition existing in the country as well as in the automobile industry.

There are approximately 157,000 workers employed in Ford industries in the United States, according to recent figures. Of these, more than 24,000 work in branch assembly plants.

The largest number employed in any single manufacturing plant is, of course, at the Highland Park plant at Detroit, where 68,500 men are at work.

The biggest increase in the number employed at any one place during the last year was made at the River Rouge plant of the company. A year ago 28,000 men were employed there, while today there are nearly 42,000 workers on the payroll.

Other manufacturing units, including the Lincoln car plant at Detroit and the plants at Kearney, N. J.; Hamilton, Ohio; Green Island, N. Y.; Glassmere, Pa., and Poughkeepsie, N. Y., employ close to 11,000 men.

Smaller plants around Detroit give employment to more than 800, while at the present time there are over 4,000 men at work on the company's timber and iron ore properties in the upper peninsula of Michigan.

Ford coal mines in Kentucky and West Virginia are giving employment to more than 3,500 men, and the Detroit, Toledo & Ironton, the Ford railroad, employs in excess of 2,500.

George Washington was the direct descendant of "common people," but he had the blood of practically every medieval royal line.

CHRYSLER PLANS PLANT ON COAST

Southland Location Appeals To Maxwell Chief As Assembling Site

Possibility that the Maxwell-Chrysler-Chalmers Corporation may establish an assembling plant in Southern California was voiced by Walter P. Chrysler, president of the three companies, on his arrival here to look over the ground with an eye to the future expansion of his business. Mr. Chrysler declared that the startling growth of Southern California is attracting many eastern firms to locations on the coast.

His studies of business conditions here have implanted in Mr. Chrysler's mind the certainty that prosperity in the Southland will continue, and his tentative plan for the establishment of a branch here would be in line with the decision of the Maxwell Motor Corporation to retire \$4,500,000 worth of its Series C notes on March 1, three months before the date of their maturity. The action of the company in paying off these notes, according to Lyman P. Clark of the Glendale Motor Car Company, Maxwell and Chalmers distributors, and recently appointed agent for the Chrysler Six, is conclusive proof of the financial soundness of the concern and indicates that the Maxwell Motor Corporation is in excellent shape to carry out the mammoth construction program that has been outlined for the coming year.

Assets Abundant

"The Maxwell assets are five times greater than its current liabilities," says Mr. Clark, "and the spring selling season will, I am certain, show an increase over the gain of January of this year over January, 1923, when the gain was more than 38 per cent. Rather than use its working capital to pay off its Series C notes, in view of the increased business and especially the production of the new Chrysler Six, the Maxwell Motor Corporation has provided for the issuance of ten-year 7 per cent Convertible Sinking Fund Gold Debentures, which will be offered for sale shortly.

The payment of the \$4,500,000 Series C notes marks the payment of the last of the corporation's funded indebtedness incurred at the time of its organization in June, 1921.

PLAN TIA JUANA TRIP

The sales force of the Packer Auto company, 245 South Brand boulevard, is planning to motor to San Diego and Tia Juana today, returning tomorrow night. The trip will be made in a Big Six Studebaker and the boys will take in the races while at Tia Juana.

News Want Ads for results.

STOP THIEF!

No matter how loud you "holler" it will avail you nothing if your car is stolen and it is not insured. Be wise and have your car insured at once. We will write you

A Policy That Will Cover Your Automobile From Every Angle

No matter what might happen to it—And the rates are so low you will be surprised when you take out the policy. Come in and talk it over with us. You will get the best possible protection at the lowest possible rate—and if anything happens to your car you will not be bothered with "red tape" about settlements.

CLINTON L. BOOTH

Automobile Insurance Exclusively

116 W. Colorado.

Phone Glendale 1465

See and Ride in the Oldsmobile Six Before Buying Any Car

You will say, the Greatest Value for the Money. Easy Terms.

C. H. HUNTER

Glen. 2373.

208 West Broadway

Buy A Satisfactory Car From A Reliable Firm



February closed the seventh year that the Packer Auto Company has served this community in its capacity as dealer for the **House of Studebaker**

PACKER AUTO CO.

—STUDEBAKER DEALERS—

Glendale, Eagle Rock, Burbank and Monte Vista Valley

Colorado and Brand.

Phone Glen. 234

Maintenance Hints Will Save Repairs

In cold weather watch the radiation system. Use a good cleaning mixture to remove scale and mud. Also an anti-freeze spirit should be used.

In case your motor will not start, don't keep flooding the carburetor. Prime the motor by putting gas in the petcocks. If this

doesn't work, look for ignition trouble.

A little attention to your car will make it last much longer and give much better service. If you still drove a horse you would see that it was fed and watered regularly, and a car needs just as regular treatment.

See that your brakes are properly set if you leave your car on an incline, and also turn your front wheels toward the curb. It is best not to start or stop suddenly, nor to skid round corners. The strain set up in your

tires by that form of misuse is terrific.

Don't run the motor in a closed garage. The carbon monoxide in exhaust gases is odorless, and a small percentage of it in the air is fatal.

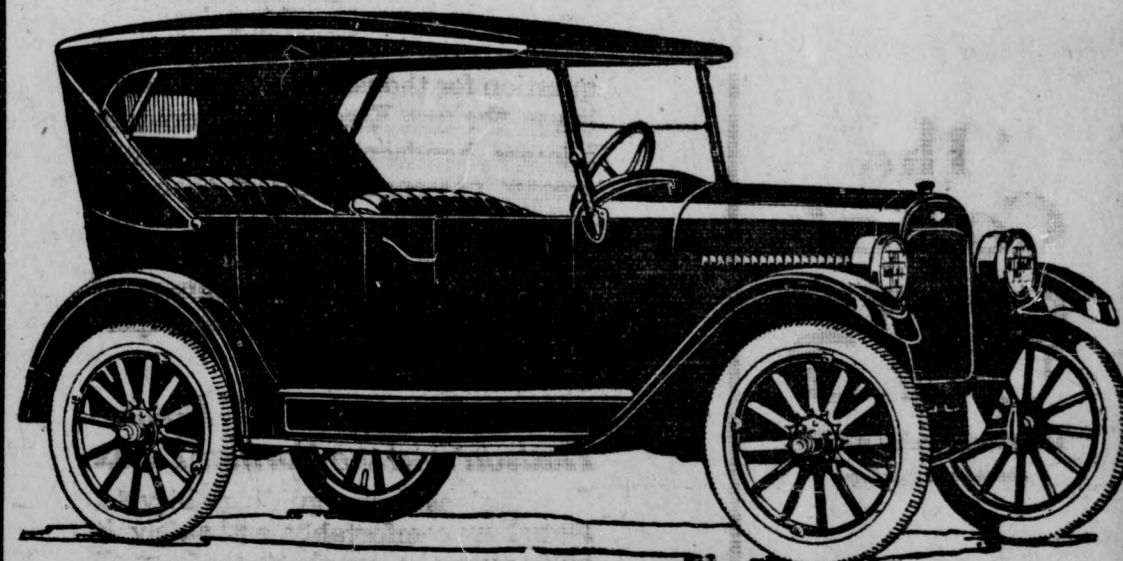
STRICT FOR DRIVERS

To obtain a driving license in Sweden it is necessary for a person to be not only a good operator but a good mechanic and to be perfect physically and intellectually.

CHEVROLET TOURING CAR GET IT NOW!

Here is an Automobile which anyone can be proud to own Because of its up-to-the-minute Style, Complete, Modern Engineering, and the Lowest Operating Costs of Any Five-Passenger Automobile.

Only \$635 Here



Heavy Duty Brakes

Gasolene Tank on Rear of Car
Curtains Open With the Doors
Alemite System

C. L. SMITH

Open Evenings

DEALER

Glen. 2443

Colorado at Orange

DEALERS OCCUPY NEW BUICK HOME

Tanner & Hall Moving Today to Quarters on South Brand at Maple

Today and tomorrow are to be moving days for Tanner & Hall, Ltd., 237 South Brand boulevard, and by Monday morning the Buick agency will be housed in its handsome new home on South Brand boulevard at Maple avenue, one of the most modern and striking automobile display rooms in the southland.

For several days past the firm has been preparing for the final move, and everything was in order this morning for the transfer to the new quarters, which will afford much more room for the various departments that have grown until the present location cramped them to a degree that caused a vast amount of inconvenience.

What is claimed to be the largest electric sign on any automobile house in Glendale marks Buick's new home, and all the appointments are in keeping with the dignity of the firm that has for twenty years maintained such a prominent position in the automotive industry.

CAVERN EXPLORED
The Carlsbad cavern, in the foothills of the Guadalupe mountains in the southern part of New Mexico, has recently been found to contain formations of such startling significance that in October President Coolidge set the cavern aside as the Carlsbad National Monument.

KELLEY COMPARES OLD, NEW STYLES

Hudson Dealer Emphasizes Advance in Building Recent Models

"When you look over the marvels of mechanical ingenuity and body craftsmanship on display in the automobile show room and compare them mentally with the cars of a few years back, you can't help feeling that the amazing growth of the automobile industry is fully deserved," said P. J. Kelley, of the Kelley Motor company, 228 North Brand boulevard, Hudson and Essex dealers.

"Here is one industry that has gone on from year to year steadily improving its products and its processes of manufacture, and at the same time giving the public the benefit of every reduction that could be effected in production costs, so that the car of today represents greater dollar for dollar value than ever before."

"The 1924 cars exceed in performance, dependability, beauty, convenience and comfort even the superb creations of a year ago, and establish a new standard in each of these respects that could not have been dreamed of in the earlier days of the industry. And the best part of it is that in few instances do they cost more, and in many instances they cost less, than their predecessors of last year."

LOSS FROM AUTO ACCIDENTS HIGH

Figures for Los Angeles for Past Year Shows Total Nearly \$4,000,000

The economic loss from motor vehicle accidents in the city of Los Angeles during 1923 was nearly \$4,000,000, according to figures just compiled by the public safety department of the Automobile Club of Southern California. This estimate is based on the tables of the National Safety Council which fixes the average economic value of males each year at from \$350 to \$750 and females from \$150 to \$300.

Motor vehicles were responsible for 43 per cent of the 486 accidental fatalities and 10 per cent of the 30,750 non-fatal but more or less disabling injuries.

The economic loss from total fatalities was \$5,421,100. The auto's part in this loss was \$2,313,073 with 219 deaths.

Total Loss Is High
The total economic loss from all non-fatal accidents was \$1,263,300, of which 10 per cent is charged against motor vehicles.

The Automobile Club calls attention to the fact that while these figures are large, they do not take into consideration the automobiles smashed, machinery broken, doctors' bills, medicines and a myriad of other expenses brought on by accidents. Neither is the human suffering entailed taken into account.

In an effort to reduce this ghastly annual toll, the automobile club is carrying its safety work into the public schools and among the campfire girls and boy scouts.

FEBRUARY SHOWS STUDEBAKER GAIN

Second Largest Month Since Organization of Packer Auto Company

Winding up February, a short month, with the second largest figures on the sale of new Studebaker cars in the history of the firm, the Packer Auto company, 245 South Brand boulevard, is anticipating and preparing for a steadily increasing business throughout the year.

Orders for March delivery are now on hand. Sales Manager Robert L. Conover states, to start the month off with a fine chance of another record, and the members of the sales organization are straining every nerve to shatter all previous records.

In order to encourage the salesmen, the Packer Auto company has offered a silver cup for competition. The high man at the end of each quarter has his name engraved on the cup, and the man with the greatest total to his credit at the end of the year gets the cup "for keeps."

Officials of the firm and a number of the salesmen will attend the luncheon that is to be tendered A. E. Erskine, president of the Studebaker Corporation, next Wednesday, by the Studebaker dealers in southern California, in Los Angeles, when every phase of Studebaker business in the southland will be discussed.

U. S. AUTOS LEAD FOREIGN MARKET

Studebaker Official Reveals Reason for Supremacy In Other Fields

(Continued from page 1) which make them more serviceable and satisfactory to operate.

Service Simplified
They are built along the same general lines, first of all, and can be easily understood and repaired by mechanics. European cars, on the other hand, do not conform with any basic standard, and as a result "freak" cars appear on the foreign markets. This, of course, makes it difficult to obtain service.

European cars do not have as much reserve power as the average American automobile. Because of their small motors, the majority of European cars are equipped with four speeds forward, instead of three, with the result that the driver must shift from fourth to third speed in order to climb the most ordinary hill. This fact, and the added flexibility of American-made motors, add favor to American cars in the markets abroad.

Some time ago European cars could be operated with lower gasoline consumption, due to the smallness of the motors, but automotive engineers in this country have almost completely offset even this temporary European advantage by decreasing the fuel consumption required by the powerful American-made cars.

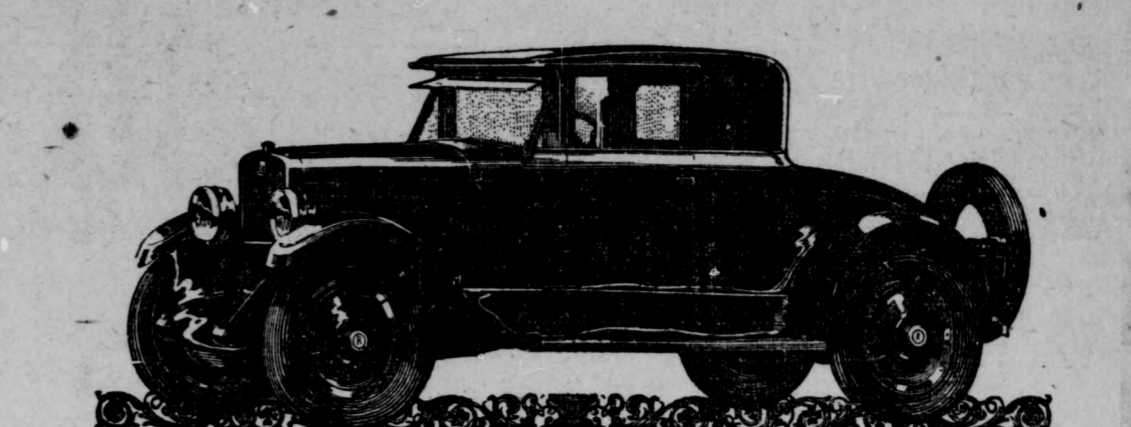
Generally speaking, European automobiles have lower road clearance than American cars. This is of little importance in England or France, where highways are improved, but it is a decided disadvantage, for example, when cars must negotiate the rugged roads of Australia or South Africa.

About American Methods
European manufacturers, producing only a limited number of cars a day, must sell their products for prices greatly in excess of those of the American manufacturer with a capacity of hundreds of cars daily.

A European car selling for an equivalent of \$1,500 does not compare in intrinsic value with an American car at the same price, because of the manufacture of foreign cars many costs, such as excessive overhead per car, expense of complicated sales, etc., have to be absorbed.

Some foreign manufacturers are increasing their capacity and are adopting American large-production methods, because by operating on a smaller basis they have not been able to meet the prices and quality of American cars. Moreover, they realize that the repetition of the same operation many times tends toward greater precision and skill in the worker, and consequently results in a higher degree of accuracy and quality in the product itself.

With the long experience, manufacturing skill and highly developed methods of the automobile manufacturers in this country, American cars will continue to grow in importance in the markets of the world. In fact, the United States has its greatest era of foreign automobile business ahead.



Demand Quality and Performance Equal to That of the ROLLIN 4
Rated at 18 Horsepower and Develops 41

Motor Sales Co.
406 E. Colorado. Phone 790-M.

The Good MAXWELL Club Sedan

Why Owners Delight In This Useful Car

Ask owners of the good Maxwell Club Sedan why they are so enthusiastic about this model and they will probably phrase their delight in a score of ways. But in the last analysis you will find their answers really mean ruggedness combined with dependable, economical daily service of an exceptionally varied nature.

There is no question at all about the wide margin of value-superiority which this Club Sedan offers the buyer.

GLENDALE MOTOR CAR CO.
MAXWELL AND CHRYSLER
124 W. Colorado St. Phone Glen. 2430

SMALL CAR ADDS TO LIFE'S COMFORT

Chevrolet Dealer Explains Increase in Numbers of Automobiles

The increase in the number of cars from one to several thousand to one to every two and a half families in the United States is attributed to the advent of the small and inexpensive type of car by C. L. Smith, Chevrolet dealer, Orange and Colorado streets.

"Ten years ago," he says, "when present production methods were unknown, automobiles were exclusively the luxury of the wealthy and the moderately wealthy classes. The man with a small income was simply out of luck as far as the ownership of mechanical transportation was concerned. Today as revealed in the statistics quoted, there is practically a car for every other family throughout the whole country.

COLORED BODIES REACH PERFECTION

Olds Motor Works Secures Success with Process, It Is Stated

Automobile bodies enameled in colors, with all the resultant gloss and long wearing qualities characteristic of the common black enamel finish, are now for the first time made possible through the perfection of a new process by the Olds Motor Works, Lansing, Michigan.

The announcement of this important and advanced "step" in automobile manufacture was not made public by the Olds Motor Works until the success of the process had been assured, asserts C. H. Hunter, local Oldsmobile dealer. This followed several years of experiments and months of testing. For several months past Oldsmobile sport touring cars have been finished in weathered-bronze green baked enamel.

Black has maintained its place as the standard color for automobiles only because it could be baked on cheaply and quickly.

Much In Favor
Compared to the ordinary paint and varnish finishes, the colored enamel process has many points in its favor. It requires but nine hours to completely finish a body by the new process, whereas the shortest time possible with a paint and varnish job is ten days. It can be readily seen that great savings are effected. The perfection and introduction of this new body finish is another economical innovation which has made it possible for the Olds Motor Works to produce a six cylinder car at the lowest price ever before offered the public.

Urges Congress Give Relief on Auto Tax

"It is almost inconceivable that Congress before it adjourns will fail to give partial relief at least for the 15,000,000 motorists who are paying a tax which is discriminatory as a whole, a nuisance tax in so far as it applies to accessories, and a tax on misfortune when the automobile owner is required to pay the tax on repair parts," declares Thomas P. Henry of Detroit, president of the American Automobile Association. "Members of Congress who are willing to drop all war taxes on transportation and communication, yet leave it on new automobiles, parts, accessories and tires, are thoroughly inconsistent."

Motorists Violating Statute, Says Marsh

Violations of the motor vehicle laws are increasing at an alarming rate, all over the state, Will H. Marsh, chief of the Division of Motor Vehicles, declared here today after returning from a trip through the San Joaquin valley and other points.

Salvaging Parts Off Scrap Pile Profitable

The scrap pile about the garage and shop often proves a source of income that amounts to considerable during the year. Many parts may be converted with a little additional labor. Bolts and studs are an example; those with poor threads can be shortened and re-threaded, when the heads are damaged they can be removed and the bolt converted into a stud. Drive shafts are of such material that they can readily be converted into crow bars and used for making other small parts. A little thought will readily show the various parts would prove profitable when salvaged. This is also true of old tools which may be converted

Willys-Knight and Overland

Don't Stop So Often For Gasoline

Simplifying Bearing Adjustments Easy

In adjusting rod bearings some mechanics prefer to withdraw the pistons from the cylinders and then adjust the lower end bearing with the rod swinging free out of the lower side of the crank case. This practice is recommended wherever convenient, as it is much easier to feel for the proper adjustment in this manner than when the piston is in the cylinder and it is necessary to turn the crankshaft to feel the tension. After the rod has been adjusted and the piston re-inserted in the cylinder, the side clearance between the upper end of the rod and the piston bosses should be inspected to make sure that the rod is not bearing against the piston.

Overheated Crankcase Usually Needing Oil

It sometimes happens with a new machine that the crankcase of the engine becomes abnormally heated after a short run. The usual cause of this is leakage past the piston rings, which allows the hot gases in the combustion chamber to enter the crankcase and heat it.

CARE OF BATTERY IMPORTANT ITEM

Drivers Should Have Rate of Input and Use of Current Checked

A great deal has been said, according to H. M. Parker, of Parker & Black, Exide Service Station, about the dangers of overcharging an automobile battery, but the fact is that there is much more damage actually caused by undercharging.

AS PLAIN AS THE NOSE ON YOUR FACE

Accident insurance does not save life and property—good BRAKES will. Good brakes cost less than accident insurance. In a pinch—good BRAKES are your only hope. Brake inspection—your protection. We inspect free.

Raybestos Service Station
PARKER & BLACK
113 W. Harvard Glendale 2949

Alphabetical Index of Auto Dealers Represented in Today's Auto Section

Car	Dealer	Address	Page No.
BUICK	Tanner & Hall	237 South Brand	4
CHRYSLER	Glendale Motor Car Co.	124 W. Colorado	3
CHEVROLET	C. L. Smith	Orange and Colorado	2
ESSEX	Kelley Motor Co.	230 North Brand	1
FORD—Authorized Dealers:—			
	Jesse E. Smith	Colorado at Orange	1
	J. G. Caddell	Brand at San Fernando Rd.	1
FRANKLIN	Motor Sales Co.	106 East Colorado	3
HUDSON	Kelley Motor Co.	230 North Brand	1
OVERLAND	Smith-Sloan, Inc.	228 South Brand	3
OLDSMOBILE	C. H. Hunter	208 West Broadway	2
PACKARD	Dixie Packard Co.	510 East Broadway	2
ROLLIN	Motor Sales Co.	406 East Colorado	3
STUDEBAKER	Packer Auto Co.	245 South Brand	3
WILLYS-KNIGHT	Smith-Sloan, Inc.	228 So. Brand	3
Automobile Repairs and Accessories			
	See General Directory on page		4
Auto Batteries			
	Parker & Black		3
Auto Insurance			
	C. L. Booth		2

The Proof of the Pudding Is in the Eating

7 Reasons Why

SIXTY-EIGHT American Automobile Manufacturers have applied for patent rights to use the Knight type of Motor

1. Improves with use.
2. Requires no adjustments.
3. It is more powerful.
4. It is more flexible.
5. It is quiet in operation and remains so.
6. It is simple, being free from complicated parts.
7. It is economical.

Willys-Knight owners confirm these facts

SMITH-SLOAN

(INCORPORATED)
Local Dealers
228 So. Brand Blvd. Glen. 1320

SHORTAGE LOOMS IN CAR INDUSTRY

Demand for Spring Buying Shows Big Year Ahead, Says Nash Executive

With spring now close at hand, automobile dealers handling cars of standard make are facing a demand that from every indication will eclipse any previous shortage in the history of the automobile industry.

"Practically every spring finds the automobile dealer body unable to meet the demand for immediate delivery," said E. H. McCarty, general sales manager of The Nash Motors Company, in a letter to Donald H. Barbee, of The Nash Sales Company, 1234 South Brand boulevard, local agents. "The Nash retail selling organization, at this time, is carrying on its books more unfilled retail orders for spring delivery than at any time since this company was established. Many of our dealers, having passed through spring shortage periods of the past, anticipated their requirements this year and have on hand stocks of cars in quantities sufficient to carry them partly through the approaching 'rush season.'"

"Those dealers who have failed to stock a sufficient number of cars this year are going to find it more difficult than ever before, because of the heavy demand, to take care of the orders that the opening of spring will bring forth. At the beginning of the year Mr. Nash expressed the belief that good business generally would prevail throughout the first half of the year with favorable indications for the latter half also."

"Sales of Nash cars at automobile shows held so far this season throughout the country are heavier by a wide margin than ever before in the history of the company."

AUTO FEES SHOW \$2,231,126 JUMP

Volume of Business in 1923 Increased 27 Per Cent, Report Claims

Total receipts of \$10,698,655.59 were collected in motor vehicle fees in California during 1923, according to a report issued today by the division of motor vehicles.

This was stated to be an increase of \$2,231,126.34 over 1922 when the total income of the division was \$8,377,529.25. Money thus derived goes to the upkeep of state and county highways after running expenses are deducted.

The report said that while the volume of business for the year had increased 27 per cent there had been a decrease of 10.9 per cent in the cost of doing business due to various administrative changes and curtailments made by Will H. Marsh, chief of the division. Expenditures for 1923 were given at \$841,426.77 or 7.9 per cent of the total income as compared with expenditures equalling \$8.9 per cent of the total income of 1922.

"Money thus saved will be used to augment funds for much needed highway repair," the report added.

The report covered the period from February 1, 1923 to January 31, 1924. Actual cash reductions were made in all departments of the division up to December 31, it was stated, but the expenses were swelled by abnormally heavy business when the new registration period began in January. In spite of the increase a cut of approximately \$70,000 was made in expenditures for property and equipment, the report said.

Motor vehicle registrations for the fiscal year exceeded 1,114,000.

FITZHUGH OPENS BRANCH OF SHOP

E. Broadway Establishment Will Concentrate on Relining Brakes

Lee M. Fitzhugh, brakes expert with headquarters at 129 South Maryland avenue, where he and his assistants conduct a general garage, announces that his volume of business has been such that he has been forced to open a branch shop at the William H. Hooper service station, 222 East Broadway where he will deal exclusively in brake relining.

At his new shop Mr. Fitzhugh will be a representative for the Johns-Manville products, carrying their brake lining and clutch facings, products of world reputation.

P. L. Hollaway, foreman of the South Maryland avenue headquarters, will remain in charge there, Mr. Fitzhugh states. He already has one assistant and will put on another the first of the week. Mr. Fitzhugh will also put on an assistant at the shop in Hooper's service station.

CORPORATIONS CARS
Some 690,000 cars in this country are owned by corporations. Most of these vehicles are for the use of city salesmen, superintendents and inspectors. This is nearly as many automobiles as there are in the whole of Great Britain for all purposes.

PROPRIETOR PRESENTS FINE SILVER TROPHY 'Saving Sam' Of Western Auto Supply Company Is Given Manager



George Pepperdine, president of the Western Auto Supply Company, is here shown presenting a silver effigy of their trade character—Saving Sam—to the manager making the greatest percentage gain in business during the past year. Mr. Roubesh, local manager of the supply company, who has just returned from the convention in Los Angeles, reports that the highest honor was won by one of the Los Angeles stores. Lower right—Mrs. Pepperdine presenting silver cup to manager winning second place.

At the close of the Western Auto managers' convention from which Mr. Roubesh has recently returned, Mr. Pepperdine, president of the company, presented the manager who had made the greatest percentage gain in business during 1923, with a silver likeness of "Saving Sam." "This year," reports Roubesh, "Los Angeles district won both first and second honors. One of the Los Angeles stores had an increase of 78.2 per cent, and the Hollywood store took second place with an increase of 78.1 per cent."

The statue of Sam stands eighteen inches high and is cast of solid metal alloy, silver plated. It goes each year to the winner, and will stay during 1924 at the Moneta Avenue store in Los Angeles. Mr. Roubesh declares that he intends to win "Sam" for the Glendale store next year.

Japan has nearly 9,000 post-offices in which two-thirds of the employes are women.

Four-Sided Speed Battle for Ascot

(Continued from page 1)

prepared in anticipation of the arrangement going through and substituted the four-sided event.

"The race I am scheduling is one I had planned to stage following a Haugdahl-DePalma match," said Bentel this morning, "and is, to my mind, the strongest event possible to put on at Ascot. All the drivers are desperate pilots and the race should be one of those Ascot Helmet Dash races for the entire distance of the 20 laps. I am sorry that DePalma did not see fit to observe the 'give and take' rule a bit more generously, for I know the public wants to see the two men fight it out on the track with no others to clutter up the scenery. But there is no necessity for any

apology for the big race I have substituted."

Nine Events on Card
Nine events will be on next Sunday's card. Johnny Seymour, noted eastern motor-bike racing star who showed his class by winning the Capistrano Stakes last Sunday after losing nearly half a lap through a bad start, and Ralph Hepburn, will meet for the first time on Sunday. Hepburn drove one of Tommy Milton's cars at Beverly last Sunday when Seymour was making his Ascot debut. The motorcycle enthusiasts are looking to "Hep" to put the stop sign on Seymour after Walker failed to do so. Haugdahl will drive his 180-mile-an-hour Wonder Car in another exhibition next Sunday.

SPARK PLUG GAP

The length of the gap is very important. If it is too long, the engine will misfire, especially on sudden acceleration, for the resistance is too high under compression, and the spark jumps across the safety gap of the magnet instead or fails, in the case of the battery system.

PACKARD AGENCY WILL MOVE SOON

W. H. Daniel to Occupy New Quarters on Brand Inside 30 Days

Construction of the new show-rooms and service department of the Dixie Packard Company at 1129-1131 South Brand boulevard is nearing completion, and W. H. Daniel, the manager of the firm, expects to occupy his building within thirty days.

The building will be faced with gray brick and glazed tile, with large plate glass windows that will afford excellent lighting for the display of the Packard and Gray cars that the firm handles in this territory. The showroom, measuring 50x50 feet, will also accommodate the offices, and on the mezzanine there will be rest rooms for patrons of the establishment.

In the service department, which will cover a space of 50x100 feet, every facility for handling repairs on the cars will be installed, with wash racks and storage requirements of the most modern kind.

Another feature that will enhance the appearance of the building will be the electric sign, measuring 12x15 feet, that will be installed at a height of twenty-four feet above the roof of the building.

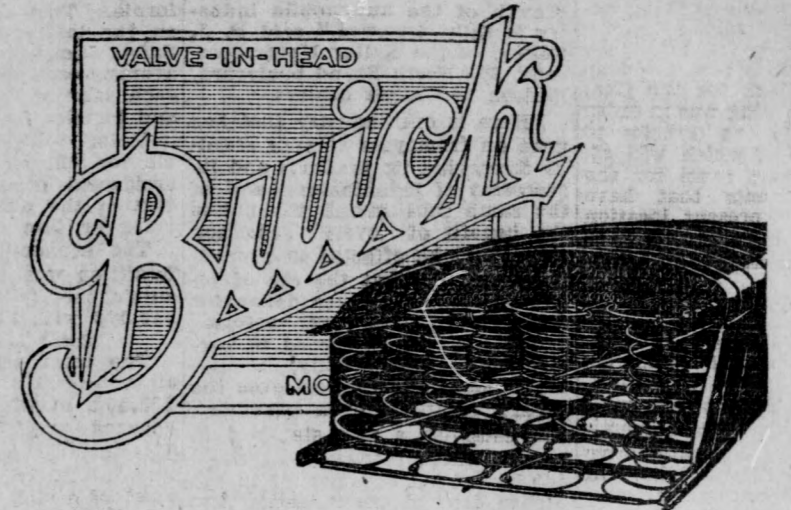
Mr. Daniel's reason for making the move is his belief that the automobile business of Glendale will, in the near future, center on the city's busiest boulevard.

Refacing Valves New Stunt for Mechanics

When valves become badly pitted or worn, grinding with a compound becomes a long, tiresome, as well as an unsatisfactory job. The proper method is to reface the valves. A block of wood, having two angles on the top face and a flat on the bottom, is placed on the top of the cylinder block, and blocked against one of the cylinder head bolts. A file is placed on one angle while the valve is turned. The file should be used on both angular faces, so that the edge of the valve head is given two angles, producing a sort of convex effect, which makes grinding quicker and insures perfect seating of the valve due to its narrow seating face. A fine file should be used to avoid cutting deep scratches in the valve face, and the valve is finished in the usual manner with grinding compound.

Doing Business in Our NEW HOME

On and After Monday, March 3rd



Another Reason Why —

Buick Cushions Are Comfortable On All Roads

The cushions on Buick open cars are supported on double-deck springs. The upper springs, light and easy acting, smooth out slight road irregularities, while the larger and stronger lowers absorb the bumps that cause the ordinary seat to "strike bottom". Two pads of curled hair between springs and French plaited upholstery give that final softness and assure the purchaser a cushion that will stand up.

When better automobiles are built Buick will build them

Phone Glendale 50 for Demonstration at your convenience

Tanner & Hall, Ltd.

BRAND at MAPLE

AUTOMOBILE DIRECTORY AND GUIDE

Accessories—Service Stations—Garages—Tire Repairs—Auto Laundries—Auto Tops—Parking Stations



<p>WASHING POLISHING</p> <p>C. C. BOUCHER</p> <p>Conscientious Greasing</p>	<p>VAN & JACK'S</p> <p>The Largest and Most Modern Equipped Super Service Station in Glendale.</p> <p>240 South Brand</p> <p>If You Want the Best— We Have It!</p>	<p>USED CARS BOUGHT AND SOLD</p> <p>Miller & Rafelson</p> <p>Tires, Accessories Vulcanizing</p> <p>L. J. Thierault</p>	<p>24-Hour Service For Glendalians</p> <p>Glendale motorists are offered a real 24-hour service by the Sunset Motor Works, West Broadway at Pacific, which, under the ownership and personal management of G. F. Lombard, who purchased it from E. L. Gibbs and some time ago, is now winning a place rapidly in the hearts of automobile owners of this vicinity.</p> <p>Mr. Lombard came to Glendale from the Central west, where for twenty-seven years he had been working in machine and automobile shops. His knowledge of the work is comprehensive, and with the best equipped shop in town at his command, he is able to accomplish anything in the way of repairs or new parts right under his own roof, with the exception, he said, of painting and upholstery.</p> <p>Mr. Lombard has a splendid crew of workmen, and is keeping busy. The all-night and day service is proving particularly popular, and motorists are advised to keep in mind the fact that no matter where they have auto trouble, or what time in the wee small hours it occurs, the crew of experts at the Sunset Motor works, with their efficient towing car, are at your service.</p> <p>The Sunset Motor Works is carrying in stock a large and complete stock of both makes of cars.</p>	<p>Complete Service For Automobiles</p> <p>The K. B. K. Service Station, 1223 East Broadway, now that they have served the public by attending to new licence plates, announce that they are now offering a service equally as good, pertaining to good tires, and for a while can give the public good cord tires at bargain prices.</p> <p>The K. B. K. Service Station was established a year ago. It occupies a corner lot, with 160 foot frontage on Broadway and 100 feet on Adams! In this splendid location the business has grown remarkably. Besides the gasoline, oil, accessories and tire and tire repair departments, which are conducted by the original company, concessions have been leased on the lot for lubrication, battery and ignition, repainting, brake lining and vulcanizing, cigars and lunch stand. This makes about as complete service for car and driver as one can imagine.</p> <p>A special bookkeeping system has been necessary to take care of the licenses, but the company benefited by making many new friends in this way.</p> <p>The company is owned by Clarence Krueger of Glendale, Harry Banks, who owns a home at 1253 Oak Ridge, and by silent partners whose names are represented by the last "K" in the company's name.</p>	<p>Prest-O-Lite Service</p> <p>GARDNER AUTO ELECTRIC CO.</p> <p>Starters Batteries Generators Ignition</p> <p>106 West Harvard Street</p> <p>Phone Glendale 1622-J</p>	<p>EDWARD HOLLAND CO., Inc.</p> <p>GENERAL AUTO REPAIR WORK</p> <p>Machine Work Welding</p> <p>341 West Colorado St. Glendale 2557-M</p>
<p>SUNSET MOTOR WORKS</p> <p>Geo. F. Lombard, Prop.</p> <p>Phone Glen. 1935-W</p> <p>Day and Night Service</p> <p>Commercial Vehicles and Business Man's Service by Mechanics That Know</p> <p>Cars Left in the Evening Ready by 7 A. M.</p> <p>Garage and Machine Shop We work While You Sleep</p> <p>West Broadway at Pacific TOW CAR SERVICE</p>	<p>Courtesy Service</p> <p>DANNEL & HOWE</p> <p>AUTOMOTIVE SERVICE</p> <p>219 South Central</p> <p>Our men are all experienced and full of pep and will give you real service.</p> <p>We Will Appreciate Your Patronage</p>	<p>Phone Glen. 1422-W</p> <p>BOB'S Repair Shop</p> <p>General Auto Repairing</p> <p>Glendale Agents for New York Batteries</p> <p>110 No. Louise Street</p> <p>R. F. Topliff</p>	<p>FIX YOUR BRAKES</p> <p>Johns-Manville Brakes Lining—Or the Make You Wish</p> <p>General Repair Work</p> <p>All Work Guaranteed</p> <p>Glendale Brake and Auto Repair Shop</p> <p>Colorado at Central Glendale, Calif.</p> <p>Rear Shell Oil Station</p>	<p>SPECIAL 30x3 1/2 Cords \$8.95</p> <p>K. B. K. SERVICE</p> <p>1023 East Bdw. Glen. 1625-J</p> <p>"The Largest Service Station in Glendale"</p>	<p>PACIFIC SERVICE STATION</p> <p>Gilbert and Pacific</p> <p>Batteries Recharged</p> <p>All Makes Repaired</p> <p>Penland & Kempster</p> <p>Props.</p> <p>1000 N. Pacific</p>	<p>REPLACEMENT PARTS Automotive Supplies</p> <p>Bearings—Axles—Gears Springs—Valves—Rings Pins—Bushings—Tools</p> <p>Genuine Ford Parts</p> <p>MONARCH AUTO SUPPLY CO.</p> <p>204 S. Brand</p>
<p>R. L. Webster L. J. Sleeper</p> <p>STANDARD GARAGE</p> <p>"Where the Service Is Performed"</p> <p>General Repairs and Storage</p> <p>Telephone Glen. 880</p> <p>Broadway and Kenwood</p>	<p>CALIFORNIA TOPS</p> <p>Upholstering in Closed Cars</p> <p>Ford Top Recovers \$12</p> <p>WE REPLACE GLASS IN ALL MAKES OF AUTOS</p> <p>ROYER-WALTON</p> <p>117 W. Harvard</p> <p>One-half Block West of Pendroy's</p>	<p>GLENDALE AUTO LAUNDRY</p> <p>L. G. Bramble</p> <p>109 West Wilson</p> <p>Across the street from Kress 10c Store</p> <p>Washing—Polishing Greasing</p> <p>Phone Glen. 172-J</p>	<p>HENRY'S GARAGE</p> <p>—First Class Auto Repairing, Acetylene Welding and Cutting.</p> <p>—TWO PLACES—</p> <p>926 S. Brand Blvd. Glen. 833</p> <p>118 W. Los Feliz Road Glen. 826</p> <p>Henry Stands Back of His Work</p>	<p>REPLACEMENT PARTS Automotive Supplies</p> <p>Bearings—Axles—Gears Springs—Valves—Rings Pins—Bushings—Tools</p> <p>Genuine Ford Parts</p> <p>MONARCH AUTO SUPPLY CO.</p> <p>204 S. Brand</p>	<p>REPLACEMENT PARTS Automotive Supplies</p> <p>Bearings—Axles—Gears Springs—Valves—Rings Pins—Bushings—Tools</p> <p>Genuine Ford Parts</p> <p>MONARCH AUTO SUPPLY CO.</p> <p>204 S. Brand</p>	<p>REPLACEMENT PARTS Automotive Supplies</p> <p>Bearings—Axles—Gears Springs—Valves—Rings Pins—Bushings—Tools</p> <p>Genuine Ford Parts</p> <p>MONARCH AUTO SUPPLY CO.</p> <p>204 S. Brand</p>

Fact Fiction Magazine and Feature Page Fun Fancies

Daily News Letter
General News and Gossip from Staff Writers at Home and Abroad.

By ARTHUR CONSTANTINE
For International News Service

MEXICO CITY, March 1.—President Alvaro Obregon of Mexico is fighting several groups of rebels to show them who rules the country—the government, of which he is the head, or they that, for the moment, is the whole issue. These are military uprisings in Mexico.

They have a saying in Mexico that "revolutions always win." There was an editorial in Excelsior the other day. Excelsior is one of the two leading newspapers of the republic. In politics it is conservative. The Excelsior said: "Yes, revolutions win in Mexico—when the government commits suicide. Obregon is no suicide."

President Obregon has captured the imaginations, even of his foes, by the energy and determination he has put into his fight against the rebels. He has become a field general again—the still unbeaten field general of Mexico. Throughout the revolutionary epoch, 1910-1920, he was always the victorious general. For a time there was another "Pancho" Villa. At last, in 1915, at Celaya, Guanajuato, they met in battle. Obregon whipped Villa so decisively that the other never came back.

Now, for the time being, Obregon is actually the general rather than the president. He is leading an army—its battle leader. He himself commands the forces of the government that are facing the Estradistas on the Jalisco border, admittedly the most formidable outfit in rebellion against him. One battle may end it. That is the forecast here. But, on the other hand, perhaps two or three campaigns will be necessary before Obregon has whipped them all. He will undoubtedly continue to stay at the head of his army until he has shown the rebels who is master in Mexico, he or they. And until he has shown them whether constitutional government can prevail in this republic. And that it is a hoary old lie that "revolutions in Mexico always win."

He is only 43, in the prime of life, though subject to bronchial trouble. If appearance counts for anything he is an advertisement for health. When the correspondent of International News Service was talking with him in Chapultepec castle the other night Obregon looked as rugged as a bear. A couple of weeks in the field had worked off superfluous weight. His face was as ruddy as a newly arrived Britisher's.

He told how he took the field. He had been ill again with bronchitis. Then the news of the uprisings came. He rose from his bed and began to dress. Whereupon his wife, much concerned, interposed. She said: "Alvaro, if you go out with your cold you will catch your death." He answered: "Mejor que me muero en el campo que me agarren en mi cama." (Better I die in the field than they grab me in bed.) He laughed as he ended the tale—a hearty chuckle. He thought he had put one over on his enemies.

Obregon is a robust man. At times the whole revolution appears to him to be something of a joke—a joke with which the others think they can get away. He knows what he can do—learned to know his strength long ago. By the same token he thinks he has the measure of the men who have gone out against him. He has matured his plans for dealing with them—with "indefinites," as

URGENT SOLVING FARM PROBLEMS
Aid Without Legislation Is Favored



Frank O. Lowden (left) and Robert W. Bingham

An effort to find a solution for some of the farmers' problems without resorting to legislation was begun when the Second National Co-Operative Marketing Conference opened in Washington, with Robert W. Bingham of Louisville, Ky., presiding. The results of a survey of the Northwest and Middle West wheat belts just completed was given to the conference in an address by Frank O. Lowden, former governor of Illinois. Mr. Bingham, who is owner of the Louisville Courier-Journal, is responsible for the cooperative organization of the tobacco growers.

Our Defense at Panama

By JAMES L. KILGALLEN
For International News Service

EDITOR'S NOTE—This is the sixth article on conditions in the Panama Canal Zone, written expressly for International News Service.

COLON, Panama, March 1.—While the soldier in Panama has, like everyone else, his little trials and tribulations, his life, generally speaking is a happy one, and most of Uncle Sam's 5,000 men in the Zone are cheerful and contented.

There is "life" in Panama, if one goes in for that sort of thing. The two principal cities—Colon and Panama—have plenty of night life to which, "M. P.'s" notwithstanding, the soldier has access if he wants it.

Both of these cities are wet, very, very wet.

Soldiers walking the streets, and likewise civilians, naturally are confronted with such signs as

Inadequate in Guns, Personnel and Other Essential Elements, Say Naval Authorities

conceptions of Latin-American generals that the movies and the story books in the United States have to offer their audiences. The man of the hour in Mexico is a robust leader who, even in the stress of fighting for his life, can get a chuckle out of the situation. There's undoubtedly a strain of Celt in him, probably coming from those first cousins of the Irish, the Basques who live in the Pyrenees.

All fighter when he needs to be, nevertheless he can think like a scholar. There's the appreciation he delivered right off the bat on the decision of Washington to co-operate with the recognized government of Mexico. It has been called the most statesmanlike expression on that subject which has come from any quarter. The writer asked him what he thought about the Washington policy. Instantly he began to dictate. No eudicating of brain for word or phrase—what he thought flowed uninterruptedly. Even President Coolidge could not be more exact—or more profound.

Obregon, in such situations as have arisen in Mexico, is a combination of swiftly functioning mind and cool head, and he has a sturdy body to carry him forward to his purpose.

Uncle Wiggily Bedtime Stories
BY HOWARD R. GARIS

"You will hardly want to stay in the bungalow again today, will you, Uncle Wiggily?" asked Nurse Jane Fuzzy Wuzzy one morning, after she had given the rabbit gentleman his breakfast of carrot pancakes.

"Well, if you want me to stay in and paint a chair, as I did yesterday, why, I suppose I can do it," answered Mr. Longears. "I was thinking, though, of going out to look for an adventure."

"Oh, go, by all means," squeaked the muskrat lady housekeeper. "Aunt Lettie is coming to do some sewing for me, and if there is one thing I dislike, more than another, it is to have a man around the house when I'm having dressmaking done!"

"Is Aunt Lettie coming here to sew on some dresses for you?" asked the bunny, suspiciously.

"She'll expect her very soon," went on Nurse Jane, looking from the window. "She is going to make me a new skirt and a waist."

"Then I'm off!" laughed the bunny. "I certainly don't want to be here when dressmaking is going on. Needles and pins! Needles and pins!" he sang. "When a rabbit's nose twinkles his trouble begins!"

Then, putting on his hat, and taking his red, white and blue striped rheumatism crutch out of the ice box, Uncle Wiggily started to hop away so he wouldn't be around during the dressmaking.

Going down the steps he met Aunt Lettie, the goat lady dressmaker, coming up.

"Good morning, Uncle Wiggily!" bleated Aunt Lettie. "Why are you in such a hurry this morning?"

"Oh, I must find an adventure," the bunny told her.

"Perhaps you might find one right here, as the traveler did who sought a four-leaf clover," said Aunt Lettie. "He searched all over the world for it, and then came home to find it growing at his doorstep."

"It isn't that way with adventures," chuckled the bunny. "To find them you must go to the woods and fields."

"I hope you have a good one," bleated the goat lady. Then she scrambled into the hollow stump bungalow to sew for Nurse Jane, with needles and pins and thimbles and thread, while Uncle Wiggily hopped over the fields and through the woods to seek an adventure.

But, somehow or other, not an adventure did the rabbit gentleman see. He looked behind the great rocks, back of the trees, in dingy dells and bosky caverns—but not an adventure did he see or hear.

"Well, this is very strange," said Uncle Wiggily to himself. "I wonder what has happened to all the adventures? Perhaps it is going to be as Aunt Lettie said—I may find one at my own back door. But I will go on a little farther."

So the rabbit gentleman hopped on a little farther, and he was looking this way and that way, until, all of a sudden, as he looked around the corner of a sassafras bush, Mr. Longears saw the Busy Bear hiding there, eating snowballs.

"Gurr-r-r-r!" growled the Busy Bear, who was as much surprised as Uncle Wiggily was.

"Oh, my goodness!" cried the bunny, who was fully as much surprised as was the Busy Bear.

"Well, this is a little bit of good luck for me!" growled the Bear. "Here I was, so hungry that I had to eat snowballs. I didn't think you'd be out today, Uncle Wiggily! But, since you are, I shall eat your ears! Oh, yes, I'm in luck!"

The rabbit gentleman didn't stay to hear all the Bear had to say. As soon as he saw the bad chap, Uncle Wiggily started to run. But the Bear ran after him. Naturally Uncle Wiggily ran toward his hollow stump bungalow, thinking if he could once get in and shut the door he would be safe.

Along and along hopped the rabbit. After him came the bear. At last Uncle Wiggily saw his bungalow.

"I'll run around it and boffer for Nurse Jane to open the door and let me in," said the bunny to himself. "Then they must close it quickly after I am in, to keep out the Bear."

Around his bungalow hopped the rabbit. The Bear came after him, howling.

"I'll nibble you! I'll nibble you!"

Nurse Jane and Aunt Lettie



After him came the bear.

bit in, Aunt Lettie, brave little goat lady that she was, caught up a paper of pins and cried:

"Needles and pins! Needles and pins! When the bad old Bear comes I shan't let him in!" Then she stuck a lot of pins in the Bear's nose, and also some needles, and she rapped him on the nose with her thimble, so that the Bear cried:

"Ouchie! Wow! Oh, you hurt!" And he backed out of the door and ran away to get his wife to pull the needles out of his nose.

So he didn't nibble the rabbit after all, and Mr. Longears thanked Aunt Lettie very much. And if the molasses didn't run so slowly after the pancake to tag it, that the knife trips over the fork, I'll tell you next about Uncle Wiggily and Sammie's snow boy.

Copyright, 1923, by McClure Newspaper Syndicate

10 Years Ago Today

Petitions for an independent postoffice in Glendale are being circulated. The time is here when the city must have all the qualifications of a town of 8000 people and there is no one thing that will do more to putting Glendale on the map than the establishment of an independent postoffice.

Residents of Riverdale drive between Central and Columbus avenues have been almost isolated since improvement work has been in progress on that street, as well as on Columbus, both being closed to all traffic.

T. P. Drinkwater of 1106 Lomita avenue relates some stirring tales of storm and flood in the early days in the southland. Just thirty-one years ago, while living in what is now East Riverside, that section was visited by two inches of snow.

I turn electric lights on and off regularly

Order a TORK CLOCK today and get full benefit of your lighted windows and electric signs. TORK CLOCKS quickly pay for themselves in service needed by every merchant.

We use a TORK CLOCK to control our own lighting. Let us quote you on the size you need.

Machtloff-Doll Electric Co.
1013 1/2 South Brand Blvd.
Phone Glen. 881 Glendale, Calif.

Railroad information
Phone 21 or 3306
Southern Pacific
121 So. Brand and S.P. Station

"CAP" STUBBS—That's Just Like Some People

Panel 1: GEE! I BET IF A FELLA STARTED TO DIG WHERE TH' GROUND WUZ SOFT, AN' DUG AN' DUG, AN' DIDN'T STOP ANY OF TH' TIME, WHY I BETCHA HE COULD DIG TO CHINA PRETTY QUICK—MEBEE IN A COUPLA MONTHS ER SO!

Panel 2: YEP!

Panel 3: WHY GOOD NIGHT! YOU'RE CRAZY! WHY I BETCHA IT WOULD TAKE YEARS AN' YEARS, I BETCHA IT'D TAKE A MILLION YEARS!!

Panel 4: GOOD NIGHT! THAT KID ALLUS HASTA START A ARGUMENT!

By EDWINA

PROFESSIONAL CARDS

<p>Dr. Oley's Health Studios OSTEOPATHY Kirksville Graduates Only S. E. Cor. Brand and Wilson Glen. 2201 Folding Tables for Home Treatments Home or Office, Day or Even.</p>	<p>WHY BE SICK? Adjustments Remove the Cause of Disease Dr. Albert Vack, D. C. Ph. C. CHIROPRACTOR 205 East Harvard Glendale 53-N. Hours 9-12-1-7 EXAMINATION FREE</p>
<p>W.H. Appleton, M.D. Rooms 14-15-16 Central Bldg. Office Phone Glen. 71; Residence Phone 3072—Office Hours, 1 to 4 P. M. or by appt. X-RAY, DIAGNOSIS AND ELECTRO THERAPY.</p>	<p>PIANO TUNING Adjusting by Our Experienced Workmen! Satisfaction Guaranteed. FREE ESTIMATES. GLENDALE MUSIC CO. SALMAGIA BROS. 169 North Brand Glendale 90</p>
<p>P. S. Traxler, M. D. PHYSICIAN AND SURGEON Diseases of Genito-Urinary System 140-A N. Brand. Office Ph. 2801 Res. Phone Glen. 1327-M Hours, 10-12, 2-4, 7-5</p>	<p>SYSTEM DYE WORKS Expert Cleaning Pressing & Dyeing Phone Glen. 1634 102 West Broadway E. P. BECK M. M. BECK</p>
<p>Dr. Isabell Bidde Osteopathic Physician Announces the opening of her office, 107 1/2 S. Brand Blvd. Glendale, Calif. Diseases of Women and Children Electro-Therapy Dietetics</p>	<p>TELEPHONE GLEN. 2199-R OFFICE 2770 Estimates Furnished on Application EXPERT TILE WORK OF EVERY DESCRIPTION GLENDALE TILE & MANTEL CO. FLOORS, WALLS, MANTELS, TILE STAIRS, BATH TUBS, Office 107 E. Doran St. Residence 534 N. Isabel St. GLENDALF, CALIF. JOSEPH FORTUNATO, Prop.</p>
<p>Abrams' Method Diagnosis and Treatment DRS. LYND & LYND Phone 2201—106 E. Wilson Suite 3 S. E. Corner Brand and Wilson</p>	<p>MORGAN BROS. TRANSFER FURNITURE MOVING PIANOS AND BAGGAGE 117 East Broadway Phone Glen. 75</p>
<p>Sweaters Designed and tailored to your order—for less than you will pay else- where. Glendale Knitting Mills 226 S. Brand Blvd. Phone Glendale 1829</p>	<p>STEVEN'S PAINT STORE PATTON'S SUN PROOF PAINTS PITCAIRN VARNISHES Window Shades, Roofing, Glass WALL PAPER PLASTER BOARD 830 M. Sq. Ft. 217 E. BROADWAY Phone Glen. 1757</p>
<p>Viohl & Brown SIGNS 703 So. Brand Blvd. Phone Glen. 298-W</p>	<p>PANAMA TRANSFER Furniture and Piano Moving 312 East Broadway Phone 990 Ph. 1876-W</p>
<p>PLUMBING Repairing a Specialty, and Sheet Metal Work JAY F. SMITH 110 W. Broadway, REAR Phone Glen. 889</p>	<p>Trucking (WE MOVE) PRICES REASONABLE HARRY'S TRUCK CO. 301 E. Broadway, Glendale 180 C. E. PHILLIPS, Prop. Glendale 150 or 1422-W</p>
<p>We Know How To Do It GLENDALE CARPET AND MATTRESS WORKS 1411 S. San Fernando Road, Matt- resses renovated; new ones, any kind; carpets cleaned; uphol- stering. Glendale 1928.</p>	<p>CESSPOOLS E. H. KOBER 110 W. Bldwy. Phone Gl. 889</p>
<p>Lec. Tires Zenith Carburetors</p>	<p>ACME CESSPOOL CO. CESSPOOL CLEANING 307 N. Commonwealth, L. A. Phone Drexel 3158</p>
<p>GLendale AUTO AND MACHINE CO. RALPH M. REED, Prop. Satisfactory Repair Work of All Kinds. Phone Glendale 159 128 South Glendale Ave. Glendale, Calif.</p>	<p>C. R. COLBURN Builder and Contractor Phone Glen. 2842-W Lowest Figures Consistent With Best Quality 458 Hawthorne Street</p>
<p>Herbert Fairs, D.S.C. FOOT SPECIALIST STERILIZED CHIROPPODIST 208 Lacombe Bldg. Glen. 2084 Hours: 9 a. m. to 5 p. m. Open Thursday Evenings</p>	<p>GLendale COLLECTING AND DETECTIVE AGENCY A. E. BACON Formerly with the Nick Harris Agency Investigations, Collections Bad Checks 115 W. Broadway Glen. 150</p>
<p>Dr. Joseph Albert Kleiser DENTIST 103 1/2 South Brand Boulevard, Corner Broadway, Phone Glen. 1325. Hours 9 to 6. Evenings by special appointment only.</p>	<p>BUTTERFIELD CESSPOOL AND SEWER CONTRACTORS Immediate attention given to Filled-up Cesspools P. C. Butterfield, W. L. Butterfield 1325 N. Central 1331 N. Pacific Glen. 1595-J Glen. 3133-R</p>
<p>Joseph Morrow LATHING, CONTRACTING IN ALL ITS BRANCHES Large or Small Jobs Given Special Attention 528 W. Burchett, Glen. 1598-W</p>	<p>BETTER DENTISTRY—For Much Less No Hurt—No Nervous Strain DR. BACHMAN, 831 E. Windsor Road Night or Sunday, Phone for Appointment, Glen. 1933-W</p>
<p>ROOFING New Composition Roofs Laid, Old Roofs Rebuilt or Repaired, Ma- terial and Labor Fully Guaranteed. Estimates Cheerfully Given. BENTLEY LUMBER COMPANY GLENDALF 49 460 W. LOS FELIZ ROAD</p>	

Rising Flood Of Tourist Traffic Pours West

DEMAND FOR METERS IS URGENT

New Families Come Here at Rate of Thirteen Every Day

By AL DIX
 Of The Evening News Staff.
 Meters, meters and more meters. And then more meters. The demand is ever increasing and Glendale's appetite is insatiable.

Families at the rate of thirteen per day are moving into Glendale, and close to 400 meters per month are being set, according to James F. McIntyre, commercial agent of the public service department of the city administration.

In January 234 light and 156 water—a total of 390—meters were installed in the city, and reports for February, which will not be complete until next Tuesday or Wednesday, indicate that this record will at least be equalled if not surpassed the past month.

Set New Record
 At the end of January a total of 9397 water meters and 12,702 light meters were in use in Glendale, the largest number since the incorporation of the city. Records at the office of Mr. McIntyre indicate that Glendale is growing at the rate of 1,100 per month, and his estimates

Ohio Starts Move to Revise Entire Taxation System

First step toward the agreement of Ohio groups on a constitutional amendment revising the entire taxation system of the state has been taken in the appointment by the Ohio Tax Association of a committee of seven to act in an advisory capacity toward the framing of an amendment upon which an agreement can be reached. The amendment, in line with the general movement for tax adjustment advocated by the National Association of Real Estate Boards, is being urged by the Ohio Association of Real Estate Boards through the tax association.

Repeal of the uniform rule for taxation of all property at its true value in money is asked by all civic and semi-civic organizations represented in the tax association. Resolutions adopted by the tax association favor compulsory reappraisal of real property at least once every four years, and call for passage of a debt limitation amendment to the state constitution.

LARGE TOWNS WILL SHOW ACTIVITY

Excessive Spring Building Program to Center in Leading Cities

That the larger cities of the country will absorb the major part of the excessive spring building activities now getting under way is shown in the detailed official reports made yesterday to the national monthly building survey of S. W. Straus & Co. The twenty-five cities which led in building permits for January showed a gain of 12 per cent over January last year and 57 per cent more than January 1922. The total of permits issued in these twenty-five leading cities was 71.5 per cent of the total reported in 230 cities and towns.

The gain for the entire country was a little less than 10 per cent. Of the \$236,286,583 January permits issued in 230 cities and towns, \$169,691,096 was in the twenty-five cities at the top of the list.

California Recognizes Women in Real Estate

A woman's department has been opened by the California Real Estate association in its official organ, "California Real Estate" to chronicle the achievements and interests of women realtors, women connected with real estate offices and wives of the members of the California Real Estate association. The state woman's committee will conduct the department.

"A man's wife is just as interested in his business as he allows her to be," the committee asserts.

State Land Owners Map Drive For 100,000 Rural Population Gain By 1930

The addition of 100,000 to the state's rural population by 1930 is the announced purpose of a state organization of land owners, farm land brokers and farm bankers, now in course of formation, the result of the state conferences at El Centro, Riverside and Fresno, according to the California Real Estate Association News Department. Multiple farm lands is being considered and a farm land publicity department is to be established by the state association.

President Henry P. Barbour of the California Real Estate Association and Herman Janss, secretary of the farm lands committee of the National Association of Real Estate Boards, are in the great farm colonization movement. It is proposed to locate the newcomers on farms of fifty acres or less.

It is pointed out by Mr. Janss that of 100,000,000 acres of land in California 25,000,000 acres are irrigable, yet only a sixth, or about 4,000,000, are now irrigated. In the state are outstanding \$60,000,000 of irrigation district bonds, secured by land estimated to be worth \$700,000,000, the annual products of which are valued at \$200,000,000. Before irrigation the same land did not produce enough to give it a value of \$25,000,000.

According to Mr. Janss, the great development movement in California in the immediate future will be in rural districts. Water for irrigation of many million additional acres can easily be made available. From 1910 to 1920, 50,000 were added to the rural population, and it is the aim of those planning the new association to strive for at least 100,000 by 1930, and to add by then not less than 500,000 acres to the irrigated districts.

Special attention will be given to encouragement of dairying, through inviting to California experienced dairy farmers. That although the daily yield of California dairies has a value of \$550,000, yet there are imported for consumption by the people of the state 10,000,000 pounds of butter, 9,000,000 pounds of cheese and 30,000,000 pounds of condensed milk annually.

TRADE GAINS SHOWN IN REPORT

Federal Reserve Officials Statement Indicates Business Growth

The following summary of business conditions in the twelfth reserve district has been issued by John Perrin, chairman of the board and federal reserve agent of the Federal Reserve bank of San Francisco:

Production and distribution of goods in the twelfth district continued evenly at high levels during January, 1924, accompanied by further improvement in the already strong banking position. Reporting member banks in seven principal cities have increased their loans slightly in response to the credit requirements of customers, while at the same time reducing their own borrowings from the Federal Reserve bank.

Reporting federal reserve banks—twelfth federal reserve district, (000 omitted):

	Feb. 6, 1924	Feb. 7, 1923
Loans and discounts	\$1,008,173	\$919,162
Investments	347,328	361,143
Borrowings from Reserve Bank	29,217	19,538
Total Deposits	1,325,162	1,275,439
Ratio of Deposits to Loans	131.4	138.8

All member banks, both city and country, were borrowing (Continued on Page 5)

Farming to Claim Leading Place in Growth of State

Agriculture will claim a conspicuous place in the record of California's growth during 1924, declares Frederick Faulkner, manager of the California Approved Land Settlement Association, who has been engaged in a survey of the agricultural outlook not only in California but in centers of population from which this state is drawing.

"Revival once under way will gain momentum rapidly," he said in a statement to the California Real Estate magazine. "New population on the farm lands mean broader markets for the industries of the cities."

"The abnormal drift to the cities has stopped. Of course, there will always be the migration of the younger members of the farmer's family to the city to take that seductive adventure for fame and better fortune, but the net flow of farming power is no longer away from the farm. It has been checked. New homeseekers are looking over the land. The cycle of maladjustment and false notions is about to end."

OFFERS PRIZE FOR ADD

Bert L. Clogston, recently elected vice-president of the Home Builders and Subdividers' division of the National Association of Real Estate Boards, has offered \$100 as first prize to the member who sends in the best ad which the division accepts for a book on subdivision advertising. The second prize will be \$50. Clogston is a member of the state association and also of the Los Angeles Realty Board.

CAMERA HELPS SALES

Visualized multiple listing is the device for rapid selling of real estate just adopted by the Gary, Indiana, Real Estate Board. Under the new plan a staff photographer will be employed. He will furnish each member pictures of every piece of property listed for sale with the board.

Jerusalem will soon be supplied with electricity generated at the river Jordan.

BUSINESS OF RAILWAYS GROWING

Three Lines With Offices in Glendale Report Huge Passenger Traffic

By H. THOMPSON RICH
 Of The Evening News Staff.

Phenomenal increases in westbound tourist traffic are reported by the three transcontinental railroads with offices in Glendale. One office has enjoyed a 350 per cent increase in February this year over the same month last year. The other two both did a tremendous business during February.

All three lines agree that their increases in westbound tourist traffic so far this season, over last, approximate 30 per cent. On an average, they state, two tickets out of every three collected by conductors have been for one way fare, while of the round trip tickets sold, fully 20 per cent of the return trips have been cashed in Los Angeles.

Astonishing Growth
 "Our travel into Glendale is growing at a rate that two years ago would have seemed impossible," says Henry L. Legrand, local agent for the Southern Pacific Railroad, from his office at 121 South Brand boulevard. "In fact, our business is growing with such rapidity that of late, Arthur J. Rehbold, traveling passenger (Continued on page 2)

Oakmont Heights

GLENDALE BUSINESS CENTER

VERDUGO RD.

Unsurpassed Hillside Homesites With City Advantages—Five Minutes From the Heart of Glendale Business District

More moderately priced than the average. The majority of the lots can be had for **\$1500 and \$1700**

Improvements included. Easy Terms.

Drive east on Broadway to Verdugo Road, then north on Verdugo Road to Oakmont Heights. Come and see.

Salesmen will be on tract for reservations

T. W. WATSON CO.
 SUBDIVIDERS
 708 East Broadway

Harold Blackmore
 SALES MANAGER
 301 Lawson Bldg.

Phone Glendale 810

"THE CHARM OF VIEW FROM A HOMESITE IN OAKMONT HEIGHTS A JOY FOREVER"

Huge Wooded Wonderland To Be Opened Soon

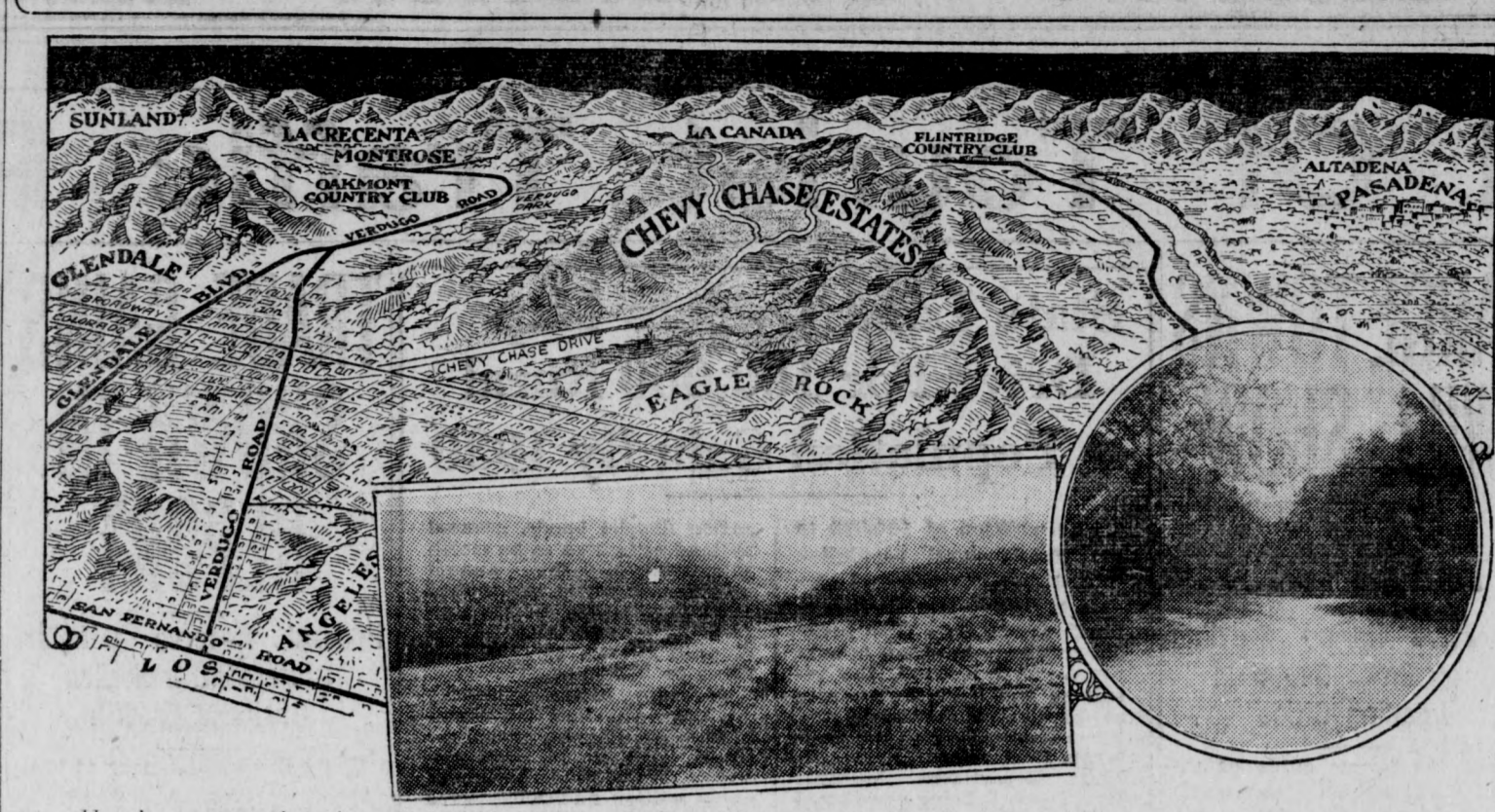
PROPERTY NEAR GLENDALE TO BE PUT UPON MARKET

Chevy Chase Estates Will Be One Of Most Exclusive Residential Sections In All Southland, Says Bert Farrar

Announcement of the opening in the near future of the Chevy Chase Estates, a wooded wonderland adjoining Glendale, Pasadena and Flintridge, has just been made by Bert Farrar, one of the leading real estate men of the Pacific Coast. For the first time in more than twenty years the public is to be admitted to this property, which covers 1622 acres in Sycamore canyon. The estate comprises an old Spanish land grant and until recently was privately owned. At that time it passed into possession of Farrar, who is now prepared to develop on this site an exclusive residential section which will be a distinct acquisition to this district in that all homes are to follow a similar type of architecture.

There has been a very keen interest in this property for many years because of the intensive development going on all around it and the knowledge that sooner or later the large tract must, because of its increasing value and residential possibilities, be subdivided so as to provide homes for the great army of people coming to Southern California.

Location Of Exclusive Tract Of Great Beauty



Here's a composite picture showing the location of Chevy Chase Estates, to be developed into one of the southland's most attractive and wonderful residential sections, also two glimpses of a bit of the property.

Tourist Traffic to West Is Increasing

(Continued from page 1) agent, has been devoting nearly all of his time to this office. "In order to take care of this greatly increased business, our big new passenger and freight station at the foot of Cerritos avenue is being rush to completion and will be finished during March. We are also preparing to move our ticket office within six weeks into an annex to the new Security Trust & Savings bank building, to be located on East Broadway, just east of the main structure.

Stops at Glendale
"Concerning service, the Golden State Limited, best train on our short line to Chicago, now stops at Glendale daily. We have also arranged with the Pacific Electric railroad officials to allow Southern Pacific tickets to be used, to and from Los Angeles, affording a great convenience to tourists."

Speaking of westbound tourist travel on the Union Pacific lines, Clarence A. Redmond, district passenger agent, with offices at 129 South Brand boulevard, declares that one reason his company has enjoyed such a large volume of inbound passenger traffic is the crack train, the Los Angeles Limited, now on the daily run and handling the new "honeymoon" cars being turned out by the Pullman company.

All Conveniences
"These cars are the very last word in comfort and convenience," says Mr. Redmond. "Each section is enclosed in partitions that go to the top of the car and furnish a great deal of added privacy. Our new observation cars, also, are proving very popular with tourists. They have shower baths, barber shops, valet service and, in the smoking room, have round tables where seven or eight may sit at the same time."

Reporting for the Santa Fe railroad, from their Glendale office at 113 East Broadway, Seales M. Sullivan, local ticket agent, states that tourist travel in the direction of Los Angeles has been extremely heavy this year, running fully 30 per cent greater than a year ago. "The California Limited, our most popular train, has been running in three sections, daily, for several months," he says. "In fact, all five of our daily trains from the east have been running to capacity, and indications are that a large number of those coming out are coming prepared to stay."

EXTOLS BEAUTIES FOUND IN HILLS

Glendale Highlands Offers Unexcelled Views of City and Valley

Glendale Highlands, located above Mountain street, just one block from Brand boulevard, "where the birds have a perfect right to sing," makes a peculiar appeal to the home seeker and should be investigated at once, as twelve of the thirty-four lots have already been sold, states T. W. Watson, of 708 East Broadway, who is subdividing and selling the tract.

"You'll like Glendale Highlands," he says. "Recall everything you have ever heard in connection with any other hillside subdivision in this sunny locality, remember all the beautiful things you have seen when wandering over the foothills of this section, put them all into one and you have Glendale Highlands. This tract is the very last word in the way of home locations truly the tract supreme."

Wonderful View
"If you have not taken a trip into Glendale Highlands, your book of life has missed one of its brightest pages, one of the most delightful surprises of your life awaits you. Go into that section day or night—it is all the same. By day you can see the entire of Glendale and surroundings, and even the waters of the Pacific in the distance, while by night the thousands of lights of Glendale twinkle merrily for your delight. Either picture is more than worth the effort it takes to reach that wonder tract."

"All modern improvements are included in the very reasonable prices that are being asked. The opening of Dwight drive, the leading highway of the tract, opens to the world this wonderful homelace. It extends to the highest point in the tract, from which an excellent 'lay of the land' may be secured."

To reach Glendale Highlands drive north on Louise street to Mountain street and east to the tract. There is no tract office on Glendale Highlands. Those interested will be able to secure particulars by applying at the office of the T. W. Watson company, 708 East Broadway.

Demand for Meters Shows City's Growth

(Continued from page 1) population is generally regarded as correct. In addition to the 400 new installations, there are an average of 2500 changes every month, which gives some idea of the mass of detail connected with the distribution of light and water in the city.

"There is no indication," said Mr. McIntyre yesterday, "that the present rate of increase is not normal. In fact, there is every indication that it will be consistent throughout the year, and we look for a slight increase in the number of installations. Figuring on the average of four persons to the light meter, which is accepted throughout the country as the basis of estimate, Glendale is growing at approximately thirty-three persons per day, which is of course, unprecedented in the history of the city."

"We were never so busy before as we are at the present time. We are flooded with applications from new customers and requests for transfers of service from one house to another. We are constantly increasing our force, both in our office and on the street, and yet we are forced to extend ourselves to keep up with the increasing demand upon us."

"I predict a wonderful year for Glendale, and am sure that this department will enjoy the most wonderful period of prosperity in its history, and it reflects the condition of the city better than any other medium of which I can think. Although January and February have been big months, I look for their record to be exceeded throughout the year."

News Want Ads for results.

Big Cities to Show Building Activity

(Continued from page 1) gained 23 per cent and the eastern states 17 per cent, the increase in the latter group being centered largely in New York City, Philadelphia, Boston, Newark, Providence and Jersey City. Although the central west displayed a loss of 13 per cent, a number of the larger cities, excepting Chicago, made commendable gains.

"The significance of the reports here recorded lies mainly in the fact that they indicate the possible inception of another exceedingly active spring building season," the survey concludes.

Conditions Duplicated
It is to be recalled that the excessive gains in building permits issued at this season is a duplicate of conditions existing one year ago when the building movement gradually gained momentum until it culminated in activities of boomlike proportions with the arrival of spring weather.

Both labor and materials were well stabilized during January. There were fluctuations both up and down in building material prices but they were of minor importance.

Wonderful Site

It is therefore with a feeling of intense satisfaction that owners of surrounding property and persons interested in seeing the scenic foothill territory reflect high ideals and artistic standards give their approval to the comprehensive plans presented by Farrar for Chevy Chase Estates.

Twenty thousand live oaks and sycamores, grown to maturity, make this large tract one of the most attractive residential sites to be found anywhere. All of the property, which adjoins Glendale and is in close proximity to Flintridge and Pasadena, is on a hillside, with knolls and vantage points upon which to build.

It is to be divided into larger homesites, ranging from half acre to five acre plots. This gives assurance of estates of substantial proportions and makes possible development along the artistic lines envisioned by the new owner.

Normandy, that land of romance and beauty, has been drawn upon for architectural designs deemed fitting for the wooded magnificence of Chevy Chase. Restrictions will be imposed so as to compel uniformity of architecture—so as to assure a true Norman atmosphere in the pretensions development so soon to be under way. There are also restrictions covering the cost of homes and governing the erection of buildings in a convenient business center to be established at the entrance to the property. For purposes of expediting the

laying out of this modern

Normandy the Bert Farrar Company has been formed. This company will direct the laying out of streets, provide for paving, put in gas, water and electricity and handle the general business of the great undertaking.

The City of Glendale is at present paving a boulevard which goes to the entrance to the property and Los Angeles county has completed a survey of county boulevards which provides for a boulevard running through Chevy Chase to Flintridge and another through to Pasadena. The two business centers are to be at the entrance of the estates and at the junction of the Flintridge and Pasadena boulevards.

Fine Scenic Highway
The drive through Chevy Chase will be one of the finest scenic boulevards in Southern California. One of the most important details of the plan will be in having the landscaping conform to the Norman spirit of the project, and to make certain of this Farrar has retained the services of Franz Herding, a noted Swiss landscape engineer, who is now on the ground preparing plans. Ed M. Lynch, field engineer, is working on the contour of the land for the layout of the various woods within the property and Herding is co-operating.

Although Farrar has not been identified with real estate enterprises in Southern California, he has a wide reputation on the Pacific Coast. He was in business in Seattle for thirty years, twenty years of which were devoted to the sale and development of property. During the latter period he developed thirty-five properties, the last big enterprise being the building of the town of Kirkland, a Washington city which now has a population of 8500. This city was established on a

Realization of Dream

But Chevy Chase, with its 1622 acres of wooded hills and flowering slopes, converted into a veritable piece of Normandy set down in this beauty spot of Southern California, will be the realization of Farrar's most ambitious dream. He has given years of thought to it, has devoted much time to research and the study of architecture, and he has traveled far and wide to find the surroundings suitable for his project.

"So satisfied am I with this delightful woodland on which Chevy Chase Estates are to be built that I intend to make my home there," said Farrar. "I have sold my home in Seattle and intend to spend the rest of my life here. This will enable me to be on the property all of the time and to watch its development—to see that all that I have planned and hoped for comes true."

Tells of Long Search
In relating how he discovered and purchased the property, Farrar said:

"I spent nearly two years looking over properties around Los Angeles before I discovered this wonderland on which Chevy Chase will soon be established. I came to California after successful operations in Washington with a

view to investing, but I also had

in mind selection of a spot that would enable me to carry out the extensive plans that I had in mind. I do not believe any section of the country lends itself to development on this large scale so well as these glorious hills of Southern California.

"The people of Los Angeles are a bit too close to this beauty—they see it every day and take it for granted. Therefore they do not realize the prize they have so close at hand. Nor do they realize the wealth of this country. Why, this city is in the center of the richest mining district the world has ever known. More wealth in oil is coming out of the ground around this city than that taken out of the ground in all Alaska, British Columbia, Oregon, Montana and Nevada.

"The whole world wants to come here. We have great factories and industries, more are coming and there will be no stop to this progress. We have everything necessary to make a great city—cheap water and power, industries, a contented and prosperous people, and a climate that cannot be matched anywhere."

Farrar stated that the franchise for an efficient bus line service to Chevy Chase has been closed. He also explained that there are six golf courses within five miles and that the new million dollar Glendale high school has just been completed within a mile of the property.

BOARD WANTS TAX LAW

The Fresno Realty Board upon motion of Hayden F. Jones and C. H. Antrim, opposed unanimously the city's plan to eliminate the license tax on the ground that such a measure would add 28 cents additional tax on the \$100 of real estate.

First American express was opened between New York and Boston in 1821.

IRRIGATION IN INDIA

A dam to be erected on a river in India will be 201 feet high and will impound 80,000,000,000 cubic feet of water to be used to irrigate 300,000 acres of land.

RUBBER BATHING SUIT

Made of rubber, an Ohio inventor's bathing suit has a number of inflatable pockets to keep a person afloat, so separated that if one be punctured the others are not affected.

Where Will You Find More Glorious Homesites than in GLEN OAKS?

In One of Nature's Most Picturesque Settings of Oak Trees and Beautiful Shrubbery. Homes of Distinction Have Been Built and are Now Building. The Big Steam Shovel has Made Wonderful Progress on the New Glen Oaks-Pasadena Boulevard. This Improvement Alone Will Make a Tremendous Increase in Values.

Buy Now and Reap Big Dividends Later
Located in the center of three prominent golf clubs, with an attractive park improved with four tennis courts and a Community House.

GLEN OAKS Has Every Advantage

We are glad to announce that all utilities are now in The week that is just closing is proving to be another of those "big weeks" at Glen Oaks, the charming mountain tract located in the eastern section of the city. During the past few days a large number of the homesites in this tract were sold and several new homes were started, all of which tends to increase the value of the lots in that particular subdivision. It is the incoming population and the noise of the hammer and the saw that sets the values of lots in any tract to soaring. These things are going on right now in Glen Oaks and for this reason the values and the prices of the lots simply cannot remain stationary.

Glen Oaks Syndicate will operate a bus line to electric cars

Glen Oaks Syndicate

Oakmont Heights, Is Scenic Tract Of High Excellence With Low Prices On Lots

Getting away from the level stretches and back into the hills seems to be the greatest desire of the modern home owner. There was a time, years ago, when the mad scramble was for homesites close to the city's business center. But those days have passed.

Since the automobile has come into such general use and most of the families in Glendale have machines of their own, there has been a tendency to get away from the noise and the bustle of the modern business life. The machine has brought almost any of the suburban homesites within a few minutes of the center of the city, just as close, in fact, as walking distance was a few years ago.

Back to Nature
Then, too, the home owner of today has learned a little of what it means to really live and he has become acquainted with the fact that to get away from artificial life and to get as nearly as possible to nature, you must get to the higher levels, to get as far as possible away from the noisy business district. To be assured of absolute rest you must get away from the modern commercial noise and turmoil.

That is why the lot buyers are looking toward Oakmont Heights, that beautiful scenic tract located on the east side of Verdugo road—just a five to seven minutes to the heart of the business district of Brand and Broadway. Many daring things have been said as to the beauties of this tract, but those who are handling the tract have found it impossible to "over-promise" this beautiful home location. Instead of finding the tract overdescribed, as is the case with many subdivisions, those who have visited the subdivision have been astonished at the many good points that have not been touched, of the many assets that have not been mentioned.

Prices Are Low
This tract is close to things yet far enough out to give that "country" atmosphere that is so desirable. Immediately before the tract runs a modern bus line, while only two blocks distant runs

the Glendale-Los Angeles electric line.
The prices of lots in this tract are a revelation. The majority may be had for \$1,500 and \$1,700. They are being sold at one-fourth down and the remainder in 50 equal monthly payments, with interest at 7 per cent. Five per cent discount is being allowed for cash.

Street grading has been finished and hard-surfacing will start soon. Curbing, water, gas, electricity, telephones and the like are included in the price.

Literally speaking, a tract may be known by the person or company who is putting it on the market. The concern behind Oakmont Heights is the T. W. Watson company, 708 East Broadway. A number of tracts are being subdivided and placed on the market by this firm at this time, and every one of them is a winner.

Judge of Property
No man in Glendale can judge values more accurately than can Mr. Watson, it is claimed. Upon seeing a property and noting its many features he can tell whether or not it will make a good home tract and whether the price that is being asked is fair and reasonable. He can visualize the property as a subdivision and can tell accurately the prices that should be asked for the lots. Mr. Watson has lived in Glendale for the past forty years and he knows the entire valley like a book.

Harold Blackmore, with offices at 301 Lawson building, has been selected as salesmanager of the tract. Mr. Blackmore has been in the real estate business in Glendale for years and has gained an enviable reputation for straightforward dealing. It is stated by those with whom he has done business,

—Incomparable

- It would be difficult to find more attractive surroundings—a more desirable location on which to build a home.
- For those who love beauty, Nature endowed this wonderful setting; close in to all the conveniences of Glendale, yet far enough away to enjoy the great out-of-doors.
- This residential park has been carefully planned and restricted, and offers to the discriminating homesite seeker an ideal location and an atmosphere of exclusiveness.
- All the necessary public utilities are included: Paved streets, ornamental street lights, water, gas and electricity.
- We invite your most critical inspection of Woodbury Heights. Let us show you these magnificent homesites.

T. W. Watson Company

Subdividers and Sales Agents

708 E. Broadway, Glendale. Phone Glen. 329

To get there—Go to Lexington Drive, then to Verdugo Road.

REPORT REVEALS TRADE INCREASE

Federal Reserve Officials Statement Indicates Business Growth

(Continued from page 1) \$40,711,000 from the Federal Reserve bank on February 13, 1924, compared with total borrowings of \$45,396,000 on January 16. Since the holiday peak of December 26 such borrowings have declined \$24,244,000, or 37 per cent. A similar decline was experienced a year ago, but it amounted to only \$2,826,000 or 7 per cent.

Industrial production has been maintained at high levels. Lumber mills of the district cut 11 per cent more lumber during January, 1924, than during January, 1923.

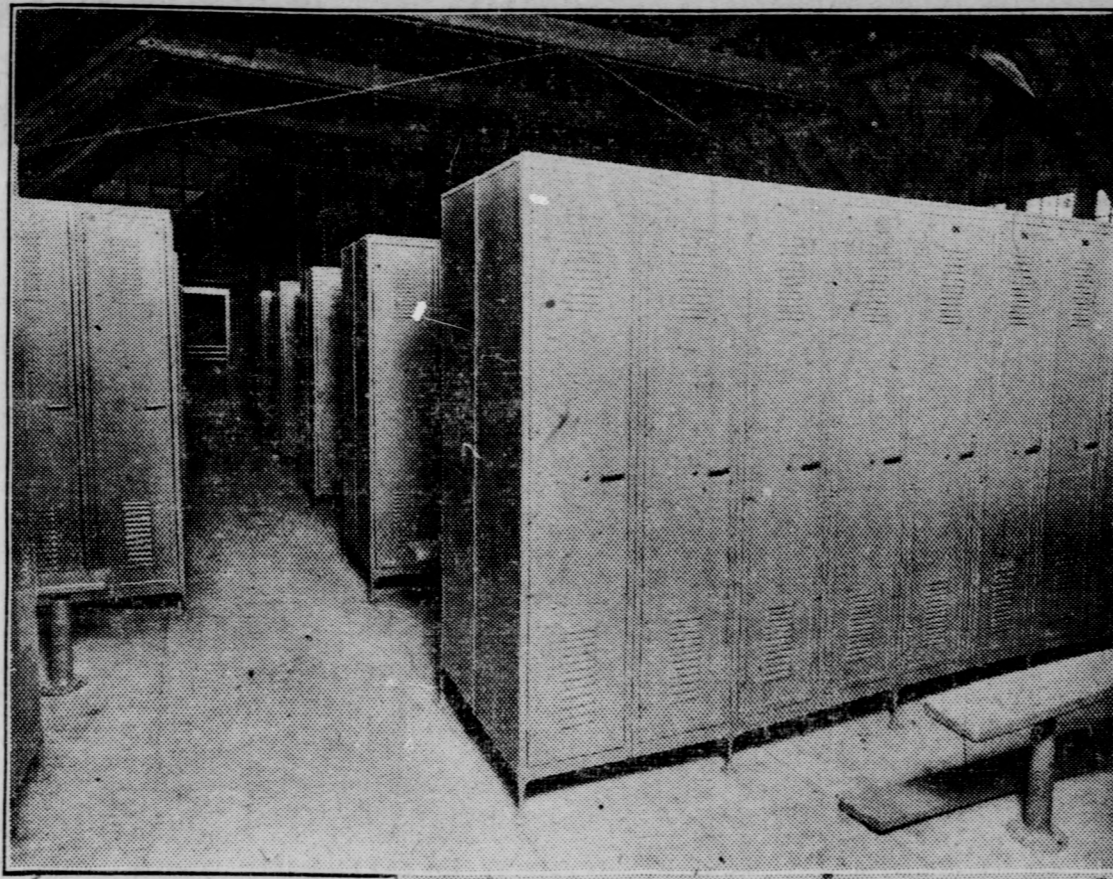
Production of the principal metals of the district (gold, silver, copper, lead, and zinc) has continued large in volume, although slight declines in output of copper and silver are indicated by preliminary statistics for January. Average daily production of petroleum in California was 4.5 per cent less in January, 1924, than in December, 1923, and 21 per cent less than in the peak month of September, 1923.

Normal growth of business activity, both as compared with one month ago and one year ago, is indicated by the amount of checks drawn against accounts at banks (bank debits) in twenty principal cities of the district during January, 1924, was seasonally large, exceeding the number and value of permits issued during January, 1923, by 12.6 and 27.0 per cent, respectively.

The general trend of prices of the principal products of the district has been upward. Advances and declines in prices of crops still being marketed and in prices of livestock have been evenly distributed. Prices of the industrial metals, copper, lead, and zinc, rose appreciably during the latter part of January and the early weeks of February. Lumber prices have remained steady at previous levels.

OPENING OF OAKMONT COUNTRY CLUB APPROACHES

Snow-White Kitchens and Handy Locker Rooms Only Two of Features



The formal opening of the Oakmont Country club will be held within two weeks, reports General Manager H. M. Parker. Announcements giving the exact date will be mailed to all members in ample time to make arrangements for the event, he states.

This opening will be a brilliant affair, calculated to duly christen an institution that it is generally conceded adds much to the social atmosphere of Glendale and, through the avenue of its memberships, is drawing many prominent people here.

Harry Y. Ellison, who has been appointed house manager of the Oakmont Country club, has managed some of the finest country clubs in America, among them Wentworth Hall in New Hampshire, and the Phoenix Country club, Phoenix, Ariz.

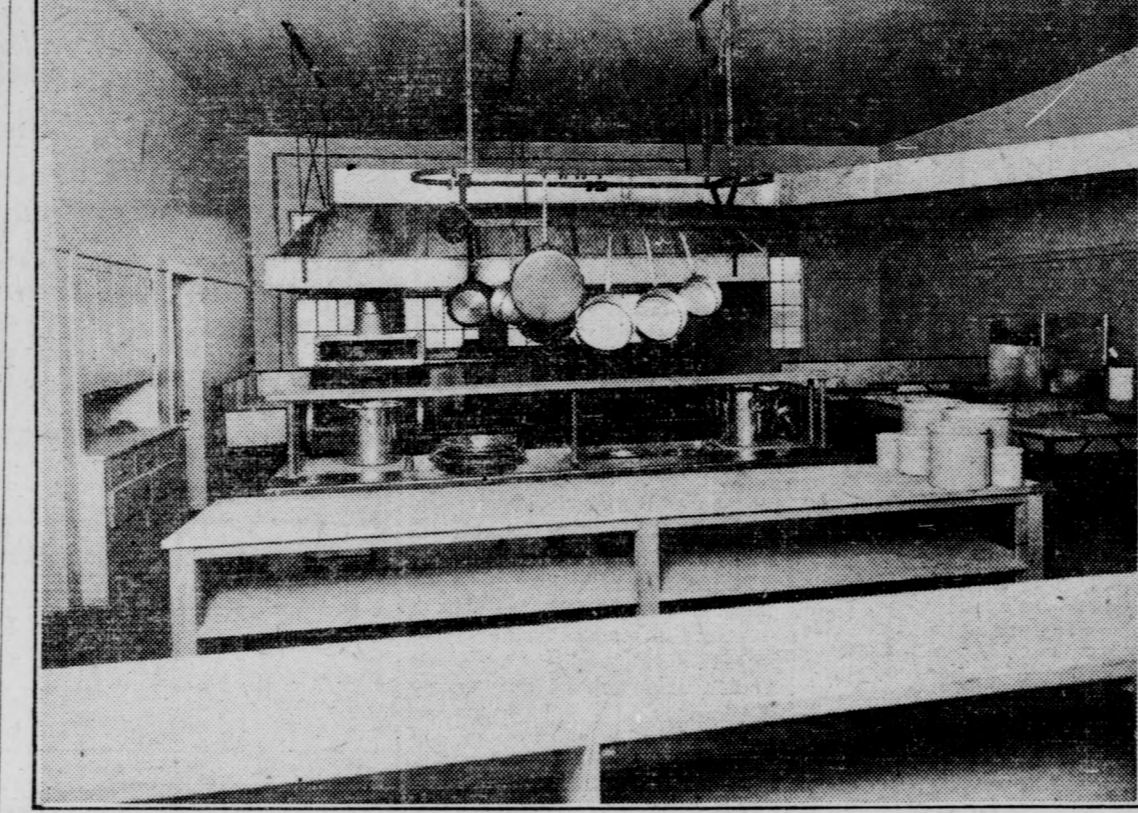
Secure Golf Instructor Elmer Holland, at present engaged by the Hillcrest Country club, Los Angeles, as a golf instructor, will come to the Oakmont country club within a few weeks, Mr. Parker states, and a special practice fairway will be put at his disposal, where all members so desiring will be given instruction in the rudiments of golf.

J. R. Thorpe of Montrose, proprietor of the Oakmont Saddle stables, is now arranging for more horses, due to the steady demand, and it is prophesied that before long the Oakmont Country club will take its place with the other large clubs which number among their membership hundreds of enthusiastic riders.

One of the greatest features of a country club, according to Mr. Thorpe, is the opportunity it offers for horseback riding. A before-breakfast or a moonlight ride offers a wonderful amount of pleasure and provides unexcelled health-giving exercise for those who do not follow the little white ball over the golf course.

Kitchens Are Complete In the culinary department Mr. Ellison has had placed at his disposal a staff of the very best chefs, who in turn have been provided with as fine a battery of big ranges and cooking utensils as can be found on the Pacific coast.

Informal luncheons and dinners are to be the order of the day and night at the Oakmont Country club, Mr. Parker points out, the idea being to cater to the busy business man and his family and provide them with a cuisine and service equal to that of the home, and at much less actual expense.



The upper picture shows a section of the 360 steel lockers provided for the convenience of Oakmont Country club members. H. M. Parker, general manager, reports that 186 of these lockers have already been taken. The lower picture gives an indication of the completeness with which the big kitchens at the Oakmont Country club are equipped.

MAGNOLIA PARK NEW SCHOOL SITE

Committee From Burbank Pick Fast Growing District For New Location

That Magnolia Park has established itself as a very fast growing community and that it is destined to be a community center is borne out by the fact that members of a committee representing the Burbank school board, sent to investigate possible school sites, unanimously chose Magnolia Park for the site of a fine new school building. The site was chosen for its advantage of central location and the fact of its close proximity to Magnolia boulevard and the new Pioneer boulevard.

"This school will serve the most rapidly growing section of the San Fernando valley," stated Earl L. White, owner and subdivider of Magnolia Park, "and its location did foresee the selection of a site that will serve a heavily populated district from all sides. It is only a matter of a little time until this end of the valley will be built solid from Ventura boulevard to the hills of Burbank."

Woodbury Heights Values Unusual For Homesites In Close Proximity To City

The question, "Why are homesites at Woodbury Heights in such demand?" is answered by T. W. Watson, whose company at 708 East Broadway is handling the subdivision, improvement and selling of this picturesque close-in residential tract.

"It is because the beautiful, lots at Woodbury Heights get the home owner away from the congested sections of the city, where he can breathe deeply, sleep soundly and live fully," says Mr. Watson, who has been a resident of Glendale for about forty years and knows every foot of this valley, being engaged in the subdivision of some of the finest tracts on the market.

Mr. Watson is thoroughly acquainted with values and says that the prices of lots at Woodbury Heights constitute a genuine surprise, the average being around \$3000, with easy terms and restrictions of from \$6000 to \$7000, to ensure maintenance of the high character of the tract.

"Those who for the past few years have owned homes in the level stretches are now turning their faces toward the foothills," says Mr. Watson. "They are doing this for two reasons: First, because the level land, close to the various business sections is becoming too crowded for comfortable living; and second, because the true value of the hill-sides as locations for fine homes has at last been realized."

The business sections in Glendale have grown and spread out so rapidly during the last few years that they have crowded out the homes, both large and small. They have overrun hundreds of dwellings and have brought residential sections directly up against the commercial sections.

"There are many people who are averse to living among the noises and the hurry of the city, so detrimental to the health and

well-being. They want to go some place where they do not hear the clang of the street-car bell, the whistle of the factory, and the noise of the hurrying automobile. They are desirous of getting out where God's great out-of-doors is to be found, and where a person can really breathe and enjoy the pure, fresh air.

"Both for recreation and home purposes, the hills are calling. The residents of southern California have at last recognized the true value of the wonderful foothills surrounding this city. They recognize the fact that along the base of our beautiful mountains are located some of the finest home sites to be found in the Golden State."

Little Left Shortly "They realize, too, that it will be but a few months before all the desirable lots in the lower foothills will be gone and if they wait until that time they will have to go higher for desirable building lots. For this reason they are hastening to secure the site for their homes—a place for their 'little mansion.'"

"The prices at Woodbury Heights include the very highest type of street improvements, consisting of three-inch macadam roadways, sidewalks, curbs and the like, and in addition there will be an elaborate system of ornamental lighting."

C. W. McFadden, a Glendale resident for fifteen years, is salesmanager of the Woodbury Heights tract, which lies along Verdugo road, between Lexington drive and Monterey road. He will be found either at the T. W. Watson company, 708 East Broadway, or at the tract.

FIND GYPSY LIFE AMONG 'RENTERS'

Donald R. Gillin Tells of Lesson Learned at Revival Meeting

Some very interesting conclusions are drawn by Gervase manager Donald R. Gillin of the Bentley Lumber company, 460 West Los Feliz road, from a talk by "Gypsy" Pat Smith, the celebrated evangelist now conducting services at the First Methodist Episcopal church of Los Angeles.

"After hearing 'Gypsy' Smith discuss the ancestry of his people and their gypsy way of living," says Mr. Gillin, "I concluded that they are not the only people in the world who can lay claim to such a makeshift life. A family of renters comes pretty close to being a family of gypsies, trying here and there, from year to year, subjecting not only themselves but their children to every known form of inconvenience and never knowing more than a little while in advance, if at all, when they may be called upon to pack up and find a new roof to cover them."

Gypsy Never Steals "According to 'Gypsy' Smith, a gypsy never steals. He makes a cut across lots through a corn field, peering over the fence, he will find a horse pasture, he may find a house that is chancier than to own one. He can even find paper and they are fairly logical. He is fooled by such things. But in the long run, with a home of his own, he has made the most valuable investment of his money in the bargain has saved his money, which he holds there and can realize it if he wants to sell."

"The man who rents has no such nest-egg tucked away. Month after month and year by year, he keeps pouring out his rent money, and in the end has nothing to show for it. To own your own home is not only the best investment in the world, it is the surest saving plan that was ever devised."

"After listening to 'Gypsy' Smith, I have come to realize that a gypsy is more to be pitied than feared. He is like a rolling stone. He gathers no moss. He is worse than a rolling stone, for he doesn't even attain a polish and that something that a home gives a man, making him a bigger, broader, better citizen."

Vacant Lands Favored in New Tax Proposal

Provision has been made in the revenue act of 1924 for adjusting the income tax deductions in regard to vacant properties held over a term of years, according to a telegram received by the National Association of Real Estate Boards from W. R. Green, chairman of the house ways and means committee.

The bill as reported by the ways and means committee allows carrying charges of unimproved property to be added to the cost thereof in determining gain from sale for income tax payment.

The provision sustains the National association's position protesting against the ruling of the internal revenue bureau in regard to that point in the present revenue act.

The ruling has been that in determining the capital net gain derived from sale of lands that have been lying idle only the current year's taxes, including the carrying charges, may be deducted. Deductions of piled-up interest charges and taxes have not been allowed, on the ground that there was no income in the years they accrued from which to deduct.

Parsley comes from Egypt and was used to adorn the head of Hercules, according to mythology.

GLEN OAKS BEING DEVELOPED FAST

Winding Highway Soon to Connect Glendale and Crown City

Beautiful Glen Oaks is being rapidly developed, reports John R. Powers of the Glen Oaks syndicate. Daily the winding highway to Pasadena is being pushed farther into the hills, densely wooded with live oaks and sycamores, and the tract is being laid out and sold as fast as it is possible to develop it.

"Glen Oaks is different from the ordinary subdivision," Mr. Powers states. "We have here something that must be seen with your own eyes to be appreciated. Nature is wild here and we are taming it only enough to make possible the development of the high-class community we have in mind."

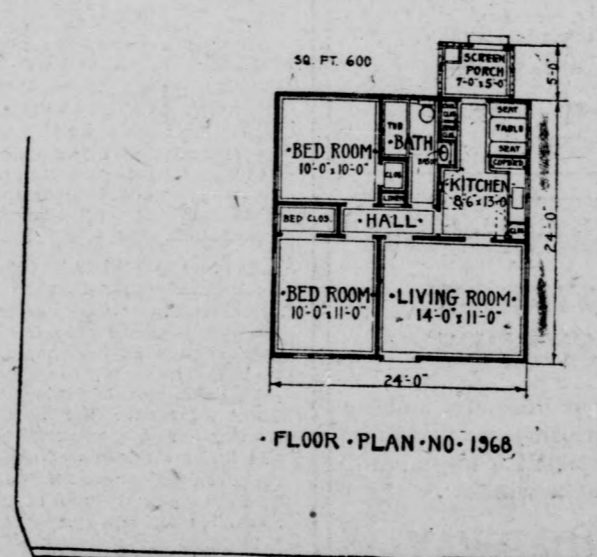
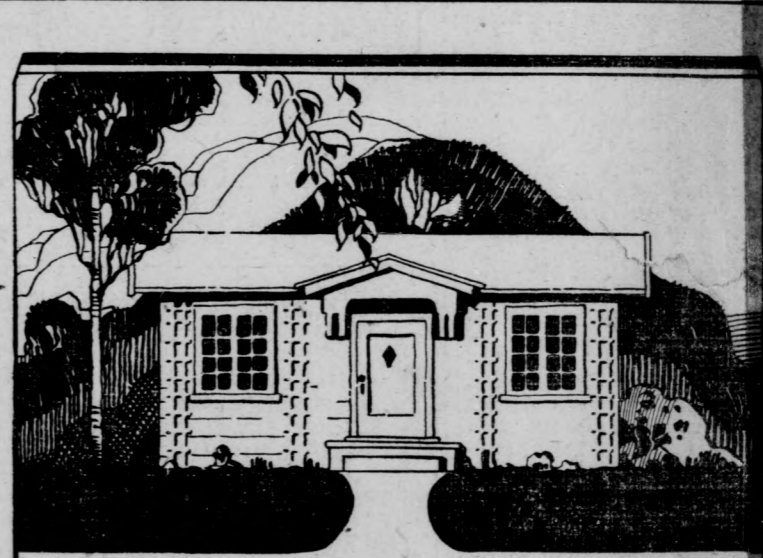
"Enchanted Dell" "What we are doing at Glen Oaks will be worthy of the beauties that nature has lavished here. It is an enchanted dell, with natural springs, wild flowers, mosses, ferns and quail by the thousands. There is even a herd of wild deer in these hills. We have seen their footprints by the brookside."

"Naturally, in such a spot man would do his utmost to preserve such natural beauty, enhancing it where possible by putting in beautiful drives and adding such modern conveniences as community playgrounds, tennis courts and a community center, where artistic shops will vend everything needed by residents at Glen Oaks."

"Consider what a charming spot it is, then remember that the tract is only five minutes by automobile from the corner of Brand boulevard and Broadway."

UPHOLD NEW FEE LAW A law passed by the last legislature which makes it impossible for anyone but a licensed broker to collect a fee for a real estate transaction was upheld by Superior Judge Thomas F. Graham in the San Francisco court, when he decided against F. Ames in a suit brought against Isaac Lavine, Ames and Lavine, both painters, entered into negotiations whereby Ames aided Lavine to purchase a home. Later Ames presented a bill for \$346 as his fee in putting through the transaction. Judge Graham held that Lavine need not pay the fee under the provisions

ATTENTION Contractors and Owners \$2400 Builds This Home Complete



And when we say complete—we mean ready to move into. Every item of material and labor covered.

The cost price of this charming little home includes all the rough and finish lumber, sash, doors, roofing (your choice of colors), plastering, screens, hardware, plumbing, bath room fixtures, wiring, painting, hardwood floors, carpenter work, foundation, cement work, every expense for material and labor.

We'll Help You Build—Expert Advice Free

This charming 4-room cottage can not help but appeal to those whose requirements are met in a small home. Placed on the rear of the lot, will make an income property which will create a rainy day fund, as a guard against old age. Will pay you dividends worth while, if built as a unit of a modern, up-to-date, attractive court. Call and see us for details of this splendid offer—We will have a reliable builder talk with you—we do no contracting ourselves.

WHEN YOU BUILD INSIST ON HAVING BENTLEY'S BETTER Finish BETTER Hardwood Floors BETTER Floors

FREE Plans and Building Information in Our Up-To-Date Service Department.

Bentley Lumber Company 460 West Los Feliz Road Glendale, Calif

Glendale Highlands

Located on the Hill Slopes North of Mountain Street, between Brand Boulevard and Louise Street, right at the base of the green Verdugo Hills, yet Within One Block Of the Pacific Electric Car Line Wonderful View Lots Homesites for discriminating buyers in search of a neighborhood guaranteed by carefully planned restrictions.

Only a Few Left Each lot has a generous frontage and is a splendid site for a picturesque villa, a pretentious manor or a romantic bungalow. Each lot commands a marvelous panoramic view of all Glendale and the valley. Improvements are of high order and include all public utilities, paved streets, curbs and sidewalks.

T. W. Watson Co. 708 East Broadway Phone Glen. 329

HOUSE PLANS FOR HOME PLANNERS

IDEAL PLAN FOR STONE OR STUCCO

House May Be Turned to Fit Fifty-Foot Lot If Desired

This house is of the every popular material, stone, which changes color with the different moods of the day and the different seasons of the year and which ripens in beauty as the centuries pass. Sometimes the stone house is as gray and impassive as a cliff. At other times it glows with color as though the sunshine had become part and parcel of its very existence. The exterior is simple, as such a material demands, full of dignity yet not austere—a friendly, inviting sort of a house that looks as though it might be the happy home of many generations of people.

A stone house, like an old stone wall, is at its best when creepers climb over it, finding footholds to their liking in crevices and on uneven surfaces. Like the boulders of the field, they are a perfect background for flowers. Any color scheme can be worked out for a house. The entrance to a stone house is through a porch into a large hall, in one corner of which is a lavatory. Many people like to have a bedroom on the first floor and for this purpose the plan shows one in the upper part of the house. This is closed for the winter and only the first floor is used. Or this room may be used for a library or study.

It is an interesting feature that has been planned for this house. Two steps down from the living room to the greater height of the dining room. Of course if the owner wish these steps, they may be omitted. The dining room is lighted with three lamps and a fireplace, is bright and cheerful. There is a doorway between the dining room and kitchen, and the kitchen is further supplied with a service porch. Thus, as may be seen, the first floor plan is roomy and charmingly arranged, and at the same time is condensed and sufficient for the needs of a small family. Upstairs are three bedrooms and a bath, besides large closets.

Though a house may be designed beautifully and the arrangement of rooms made extremely practical, still the work of making a perfect home is not complete until the finishings and furnishings have been decided upon. An architect can arrange the rooms because certain essential principles are involved, but he cannot suggest a color scheme for the different rooms because color affects people differently, and what is harmonious and soothing to one is unpleasant to another.

Some people think that the only possible finish for the woodwork of a house is old ivory, because it looks fresh and clean. Others like wood stained grey or brown, and yet others prefer the painted black. The modern tendency in wallpaper is for a plain surface, or at least one that does not show conspicuous figures, though there is always a chance to introduce bright flower patterns in the bedroom.

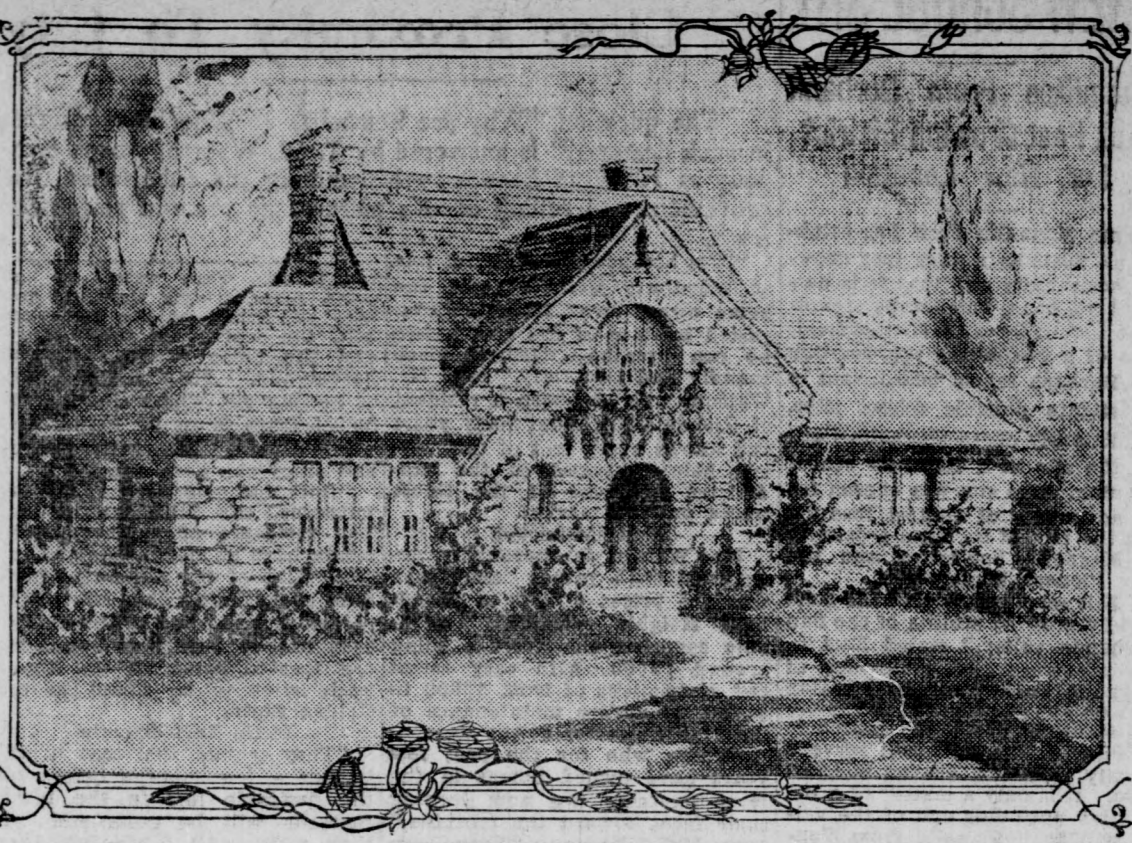
Many people like to use plain grey or tan walls, setting their color in bright chairs or draperies or hangings. There are all kinds of wonderful materials in the market for curtains, hangings, pillows, etc., that are washable, which enable a housewife to keep her house fresh at small expense. Some women are clever enough to buy some such material as unbleached muslin, voile, flannel or Japanese crepe, dye it, and stencil a pattern upon it. In this way creating rooms of great individuality and charm at little expense. Nothing is more charming for summer bedrooms than plain colored linen. If this is too expensive, gingham or rope make fine substitutes.

In choosing furniture thought should be given to its quality. Better have a few good pieces that will please, always, than some ornate object which will soon be out of date. Most American homes are overcrowded and would look much better if the rear portion of the things piled on ornaments or bric-a-brac were thrown away. By bringing in interest and finish of a space to a well-chosen jar or picture, a room is made more restful and satisfying than when the eye is attracted by a number of ornaments placed with no regard to the design of the room.

Women who are in doubt as to what colors to use in their home might first select the rug, the wallpaper and a Japanese print, and build the room up from the floors found in them, using the background color for the walls and the spots of color found in the design for the hangings, pillows and lamp shades.

This house is 59 feet wide by 5 1/2 feet deep. Therefore, a 50-foot lot would be undesirable unless one cared to turn the house, setting the living room end face to the road. Informal paths would lead around to the entrance, and this arrangement might be made most attractive. On a 75-foot lot this design would be very lovely. The simple solidity of the whole design suggests a setting of a surrounding lawn with trees which time has matured.

Since the prices of material and labor differ so materially in different localities, we do not attempt to give an estimate as to the cost. We suggest that you contact your local builder who can give you detailed information as to the costs of your exact design.

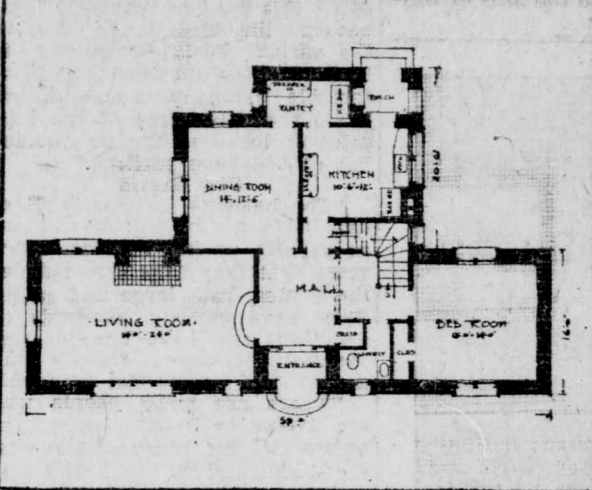


Realty Boards Plan for Washington Trip

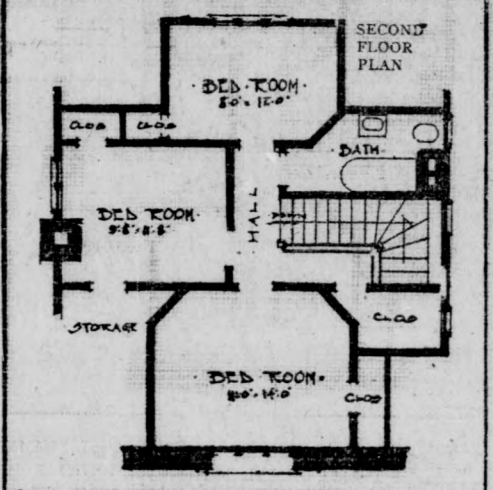
The "On To Washington" banner is already being raised in real estate boards in a number of cities. The Washington Real Estate Board has its plans already well advanced for taking care of the largest and most important gathering of the real-estate year. In New Orleans plans already have begun to be formed for sending a record delegation to the big meeting, and to provide for the placing of New Orleans before the people of the cities en route to the convention. The San Francisco board is offering a trip to the convention as a prize for the realtor who has to his credit the securing of the greatest number of new members for his board during the present membership campaign.

The Madison, Wisconsin, Real Estate Board has organized a plan whereby certain proceeds from its multiple listing system shall go to the financing of a Madison delegation.

For information as to procuring the building plans of this design, No. 68, send a stamped and self-addressed envelope to the House Plan Editor, in care of this paper.



Two steps down to a living room of unusual charm—and two steps back to a dining room and kitchen of great convenience. Then across the hall to a fine bedroom, or a library if you prefer. And up the stairs to rooms that lend themselves to most attractive furnishing. A house of many delights, indeed.



Two steps down to a living room of unusual charm—and two steps back to a dining room and kitchen of great convenience. Then across the hall to a fine bedroom, or a library if you prefer. And up the stairs to rooms that lend themselves to most attractive furnishing. A house of many delights, indeed.

National Realtors Tackle Huge Program

With the formal induction into office of President H. R. Ennis of Kansas City, and new officers, directors and division chairmen for the coming year, the National Association of Real Estate Boards, meeting at Augusta, Ga., entered upon a huge program for broad-

ening business foundations in real estate nationally and for advancing national economic studies and national, state and municipal public policies of importance in the conservation of the values of real property and general property ownership. The meeting of the association's national committee, board of directors, advisory board, division chairmen, committee chairmen and general membership studied

Extend Licensing Laws for Realtors

Inch by inch extension of the requirements for entering real estate practice is the history that is being written for real estate license laws. The New Jersey legislature has before it a license bill as advocated by the national association. The bill supplementing the present New Jersey law, has passed the House by a 45-7 vote and is now before the Senate. It has the strong backing of the New Jersey Real Estate League and of the local real estate boards of the state.

The bill contains a provision for an educational qualification test which is believed by the New Jersey realtors to be more rigid than any qualification test yet provided for in laws of this kind.

The bill would also provide that no real estate license should be issued to a broker or salesman under 21 years of age and that no license be issued to any person not an American citizen.

A circular harrow, small enough to be used by hand is a new idea for a vegetable cutter.

GROVER SQUARE

Leave it to the most conservative judge to say that in this new subdivision I am offering positively the very best bargains in

Residence and Business — LOTS —

to be found in Glendale. My desire is to make it snappy, and for quick sale am offering these splendid lots

Dirt Cheap

and on easy terms. Listen: RESIDENCE LOTS 50x157 TO 20-FT. ALLEY ON P. E. CAR LINE, ONE BLOCK TO SCHOOL NEAR TO STORES

In the fastest-developing section of Glendale.

Safe but Moderate Restrictions Also a Few Fourth Street Business Lots Come out tomorrow and take your choice.

Go west on San Fernando Road toward Burbank to Sonora Ave. Stop at tract office on corner, where courteous salesmen will show you this beautiful tract.

Arthur Campbell

110 E. Broadway—Home Office Glen. 274

For Profitable Results Use News Want Ads

Builders' Guide

HINTS ON BUILDING

Make 1924 the Biggest Year of All—in this space will be found reliable, wide-awake and Progressive dealers whom it is a pleasure for us to recommend to the Glendale public—The Real growth of Glendale is now on. Let's Go! Everything for the home builder.

S. S. BERAN CO.
BUILDERS OF HOMES
Not Just Houses
announces that if you have a clear lot and a small amount of cash we will help you arrange the balance to be paid off like rent.
Why Not Own Your Own Home?
305-307 South Brand Blvd.

SERVICE S & Q QUALITY
Thirty-eight years in Southern California making
Excellent Paints
Glendale Branch
Scriver & Quinn, Inc.
225 E. Broadway, Glendale
Telephone Glen. 3170

Attractive Service to Builders
The Broadway Shade Shop offers an attractive service to builders and home owners in Glendale. The two young men who operate this establishment—A. C. and J. S. Sumner—have been manufacturing shades and hanging curtain rods in this city for the past two years, their business having constantly grown as Glendale people became familiar with the service offered.
By reason of low overhead costs and careful personal attention to the business, the brothers are able to furnish shades at lower prices, they state, than the usual establishments of this kind. They guarantee the best of quality and workmanship and make all kinds of shades right in their own shop. Their shop is in the rear at 200 West Broadway.

The Housewife's Preference
DETROIT JEWEL RANGES
"They Bake Better"
GEO. J. TRISSEL
Gas Appliances
223 S. Brand Glendale

Offers Exceptional Wall Paper Values
R. C. Chatfield, who for the last eight years has been engaged in the decorating business in Los Angeles, and now has a crew of 15 men on the various jobs under his contract, has moved his headquarters to Glendale and opened a shop at 119 West Harvard, the name of the place being the Glendale Decorating Studio.
As a result of Mr. Chatfield's large experience and his ability to buy materials and stock at bottom prices, Glendale builders and home owners are given advantage of an attractive service offered by him. The new 1924 patterns in wall papers are being shown in the shop on West Harvard just now at very low prices, and builders will also be interested in Mr. Chatfield's line of outside paints, which are offered at the low price of \$1.25 per 15-pint can.

SUNSET PAINT PRODUCTS
Paints and Wall Paper
Wholesale and Retail
Harry Moore Co.
Incorporated
M. Alexander, Pres.
304 E. Broadway Glen. 328

Our Customers Are Our Best Reference
KEYSTONE
Shade & Linoleum Co.
GILBERT BROS., PROPS.
212 S. Central, Glendale
Glendale 3449-J

THE MAXWELL ELECTRIC SHOP
Wiring Appliances and Lighting Fixtures
310 East Broadway
Glendale, Calif.
Phone Glen. 1212

"Another Blind Man" WINDOW SHADES
That's our business, and we can furnish you any kind of a shade for any kind of a window.
BROADWAY SHADE SHOP
200 West Broadway
Glen. 656

Sale Continues WALL PAPER at 50c On The Dollar
118 Patterns of the Latest Styles to Select From
HURRY!
GLENDALE DECORATING STUDIO
119 W. Harvard St.

Everything in Sheet Metal
Sanner Sheet Metal Works
134 South Orange
Glendale
Ed. J. Sanner
Tel. Glendale 885
Residence 599-783
Los Angeles

REED FURNITURE
Made, Repaired, Refinished, Upholstered
MOLEN'S Art Reed Shop
417 E. Broadway Glen. 142

There is an A. B. GAS RANGE For Every Need
Look for the A. B. Over the Door
Good Housekeeping Shop
140 S. Brand Glen. 530

Dahlia and Canna Bulbs
Ornamental Plants
New Lawns
MOUNTAIN VIEW NURSERY
MAX JENNEY, Owner
2000 Watson Court
(Off Mountain Ave., Between Alameda and Western)
Mail Address—R. D. 2, Box 196
GLENDALE, CALIF.

Arthur L. Fryer
Designer
Contractor and Builder
Glendale 3052
Res. Glen. 276-W
Call and see our model kitchen, disappearing nook, ironing boards, etc.
207 N. Glendale

ROOFING
New Composition Roofs Laid, Old Roofs Rebuilt or Repaired, Material and Labor Fully Guaranteed. Estimates Cheerfully Given.
BENTLEY LUMBER COMPANY
Glendale 49 460 W. Los Feliz Road

Everything in Sheet Metal
Sanner Sheet Metal Works
134 South Orange
Glendale
Ed. J. Sanner
Tel. Glendale 885
Residence 599-783
Los Angeles

REED FURNITURE
Made, Repaired, Refinished, Upholstered
MOLEN'S Art Reed Shop
417 E. Broadway Glen. 142

There is an A. B. GAS RANGE For Every Need
Look for the A. B. Over the Door
Good Housekeeping Shop
140 S. Brand Glen. 530

Dahlia and Canna Bulbs
Ornamental Plants
New Lawns
MOUNTAIN VIEW NURSERY
MAX JENNEY, Owner
2000 Watson Court
(Off Mountain Ave., Between Alameda and Western)
Mail Address—R. D. 2, Box 196
GLENDALE, CALIF.

REED FURNITURE
Made, Repaired, Refinished, Upholstered
MOLEN'S Art Reed Shop
417 E. Broadway Glen. 142

DAMAGED

Y. PIONEERS HOLD DISTRICT DINNER

Songs and Speeches Feature Entertainment Staged By Organization

Noise and lots of it featured the Glendale District Pioneer Y. M. C. A. banquet which was held last night in the Presbyterian church.

The food, which was prepared by Mrs. Kelley and Mrs. Boyd, fully satisfied the appetites of the revelers, the dessert, which consisted of those delicate confections known as "pop-icicles," going over best of all.

Rex C. Kelley, Glendale district secretary, had charge of the evening and introduced various speakers. The first act was a miniature vaudeville performance, which contained the telling of several jokes, a song interspersed at intervals with the blare of a trombone, and a ventriloquist act.

J. C. Conklin is speaker as the father of the Pioneer movement in California, and who so royally entertained the local delegates on their way to the Mt. Hermon Older Boys' conference last December, gave a short talk on what his Pioneer group in Santa Barbara is accomplishing.

Ralph G. Cole, state secretary of the Y. M. C. A., gave a talk on the work of the various different state Pioneer organizations.

The Baptist church group put on the established opening ritual before the speeches started.

Month's Building Permits Reach Total of \$805,706; Year's Figure Is \$1,835,229

Figures compiled by H. C. Vandewater, municipal building superintendent, show that a total of \$805,706 in building permits was issued during the month of February.

While the total is less than that of February last year, the general run of business is much higher, as in 1923 there was a \$400,000 permit granted to the Glendale Sanitarium and Hospital.

The fact that income taxes are payable how also had a deterrent effect on business, according to his statements, heavy investors waiting until March before starting any new projects.

During the first two months of the year the total of building permits granted is \$1,835,229, which is slightly below that of 1923.

The complete list of permits during February is as follows: J. L. Currie, fourteen unit-bungalow court, 1424-1428 East Main, \$35,000.

Cornelia Cronin, apartment and garage, 505 North Central, \$27,000. National Ice company, factory, 456 Fenway court, \$20,000.

H. L. Finlay, 12-14 unit bungalow, 1122-34 North Campbell, \$19,200. Melinda Koepke, 11 rooms, 1675 Ardenway, \$17,976.

Mrs. Margaret Malcolm, family flat, 1134-36 East Chestnut, \$15,000.

B. A. Mason, 10 rooms and garage, 511 Kenneth road, \$15,000. Kelley Motor company, 7 room sales and service, 816 South Brand, \$14,000.

Neison Brothers, two 6-room houses with garage, 725 and 729 Portland, \$13,100.

Hocks-Smith Engineering Construction company, three 5-room houses with garages, at 365 Ethel, 317 Coronado and 913 Coronado, \$10,700.

M. A. Bryant, 8 rooms, 141 North Harvey drive, \$10,500. Harry E. Hall, 7 rooms and garage, 1115 Hillside, \$10,000.

W. W. Stevens, double bungalow, 1000 East Windsor S. B. Bran, store and office, 213 South Brand, \$10,000.

W. M. Brown, shed, 344 North Howard, \$8,500. W. D. Nance, 9 rooms and garage, 416-418 West California, \$7,600.

Thomas F. Cullison, 6 rooms and garage, 1218 North Howard, \$7,600. A. G. Spahr, 6 rooms and garage, 274 Hill drive, \$7,500.

A. C. Hayes, 6 rooms and garage, 1456 Cleveland, \$7,500. C. A. Greenlee, 6 rooms and garage, 433 East Loveland, \$7,000.

J. W. Beck, 3 rooms and garage, 1424 Rock Glen, \$7,000. E. M. Gray, 8 room duplex, 504 North Adams, \$6,760.

George Wilson, 8 rooms and garage, 465-67 West California, \$6,500. J. Riley, 6 rooms and garage, 521 Wing, \$6,500.

Hocks-Smith Engineering and Construction company, 8 rooms and garage, 1111 Cordova, \$6,500.

W. L. Clark, 6 rooms and garage, 505 Wing, \$6,500. Ralph K. Erlandson, 5 rooms and garage, 1273 Oakridge, \$6,200.

Table listing building permits with details: F. W. Paap, 10-room duplex and garage, 1822-24 Academy place, 6,000. Mrs. Chase, 10-room duplex, 662 West Doran, 6,000. Minnie E. Argan, three 2-room residences, 422, 424, and 426 East Acacia, 6,000.

FAIR TOSSERS PRACTICE FOR TOURNAMENT National Winter Tourney In Florida Draws Horseshoe Experts



This unusual photo, taken at night, shows a group of the women stars practicing "ringers" and, insert, Mrs. J. F. Francisco, national champ, who will compete in tourney

That "barnyard golf" is becoming a "major sport" is indicated by this unusual photo, taken at Lake Worth, Fla., at night, while a score of women were training under arc lights for the national winter tournament to be held there in February. A number of city and state champions are already in the

Florida resort getting in trim for the contest. Mrs. J. F. Francisco, Michigan woman who won the national title in the summer meeting at Akron, Ohio, will defend her title.

Changes Wrought in Incomes During Year Many Meetings Held by Flying Squadron

Changes brought by births, deaths and marriages during the last year affect materially income tax returns for the year 1923. Collector of Internal Revenue Rex B. Goodcell announced yesterday. Millions of babies were added to family circles, he said. For each, the parents, in addition to the personal exemptions allowed married couples, are entitled to a \$400 credit for a dependent.

Boys and girls who became self-supporting, and whose parents allow them the use of their earnings without restriction, form a new class of taxpayers. Each must file an income tax return and pay a tax on his or her net income, if such income was in excess of \$1,000. The earnings of dependent minor children who have not been "emancipated" allowed the use of their earnings by their parents—must be included in the parents' return of income.

Widows and widowers who lost their spouses during the year 1923 are especially affected. Unless married on or before December 31, 1923, or head of a family, they are allowed only the \$1,000 exemption granted a single person.

Widows and widowers are not required to show on their individual returns the income of husband or wife up to the time of death. The income of a decedent is considered separately, and a return must be filed by the executor or administrator of the estate. The executor or administrator who makes a return for a decedent is entitled to claim for him his full personal exemption, according to his status as a single or married person at the time of death.

In an individual return the taxpayer's status as of December 31, 1923, determines the amount of his exemptions and credits. If on that day the taxpayer was married and living with wife or husband, the exemption is \$2,500 if the couple's net income for 1923 was \$5,000 or less and \$2,000 if the net income exceeded \$5,000. If, on December 31, 1923, a single person, because of some moral or legal obligation, was supporting in his home one or more relatives over whom he exercised family control, he was the head of a family and is entitled to the same exemption granted a married person. If the support of such relatives ceased during the year, he is entitled only to the \$1,000 exemption. If a de-

Mrs. Florence Huron, screen porch, 1254 Mariposa, \$150. Mrs. E. Allen, garage, 1013 Western, \$150. H. B. Flesherman, screen porch, 1212 Cambridge, \$150. William A. Rice, addition, 704 East Palmer, \$150. Bowerman Lumber company, shed, 1622 North San Fernando road, \$150. T. J. Anderson, garage, 618 East Maple, \$125. Charles A. Caleb, addition, 630 South Belmont, \$125. C. A. Sprague, garage, 337 West Palmer, \$125. P. L. Sargent, garage, 1235 East Wilson, \$125. W. G. Lauderdale, addition, 446 Riverdale drive, \$100. David W. Goodfellow, garage, model, 109 East Colorado, \$100. F. W. Paap, garage, 1150 Senora, \$100. P. D. Ruettner, sleeping porch, 444 Salem, \$175. H. E. Bruce, garage, 1017 West 142nd, \$100. J. P. Tatlow, addition, 311 Oak street, \$100. R. J. Hemphill, garage, 1229 Broadway, \$100. D. Sharrman, garage, 513 South Everett, \$100. George R. Schofield, garage, 517 Riverdale drive, \$100. Albert Scheich, 2 rooms, 1305-A East California, \$100. E. C. Field, addition, 1923-A Glenwood road, \$100. Mr. Pendleton, garage, 376 Myrtle, \$100. W. L. Cotton, garage, 528 West Harvard, \$100. G. Renstrom, garage, 1221 E. 1st, \$100. A. D. Smith, addition, 650 Virginia place, \$90. Emilia D. Urjo, garage, 1234 Dorothy drive, \$90. J. M. Banks, screen porch, 618 East Chestnut, \$75. D. B. Bear, shed, 205 West Windsor, \$75.

KENNETH HIGHLAND VIEW TRACT

Located in Glendale's Exclusive Kenneth Road District, where values are rapidly increasing, due to the large number of high-class homes being built.

Opening prices are unusually low for this best residential district of Glendale's famed foothill section on the very easy terms of

\$500 Down

Restrictions to meet the requirements of the neighborhood. Property is on Highland Ave., just north of Kenneth Road. All information can be secured at tract office, corner Highland and Kenneth Road.

CARTER W. ELLIOTT SUBDIVIDER



Your Spring Sewing will be a pleasure with one of our New Singer Electric Sewing Machines

Parlor table electrics with the famous 66 head, and five types of portable electric to select from.

Terms \$5.00 per month

Free Lessons in Hemstitching, Draw Work and Embroidery. No Attachment. Many Good Used Machines at Bargain Prices. Machines for Rent—\$3 per Month. All Makes Repaired.

Singer Sewing Machine Shop J. S. Armstrong and Daughter 223 E. Broadway Phone Glendale 2415-J

Robert Moore Buys C. Thrasher's Market

The market at 1332-34 East Colorado street has been purchased from C. Thrasher by Robert Moore, and a good line of meats and groceries added to the stock. An up-to-date soda fountain has been installed by Mr. Moore. Mr. Moore formerly owned the White Star Market at Maryland avenue and East Broadway.

AUCTION Wednesday, March 5th, at 2 P. M.



61 Vista Bonita—Montrose, Calif. Drive north on Verdugo Road through Glendale to Montrose, Calif. Turn to right 1/2 mile to Vista Bonita St. Half block north. This new and very attractive 6-room Spanish style stucco bungalow in one of the most beautiful, slightly and healthy locations in California. Above the fogs with sunshine the year around. Adjacent to such high class communities as Filadelfia, Montecito Park, Sparr Heights and Alta Canada. 3 miles from Pasadena, near 2 country clubs. Large living room, dining-room, kitchen, breakfast nook, 3 large bedrooms and large basement with laundry equipment. The roof and attractive awnings. Large garage. Located and surrounded with fine well-lighted boulevards. This is a beautiful home and will be sold ON EASY TERMS TO THE HIGHEST BIDDER. BE SURE AND INSPECT THIS PLACE AND ATTEND THIS SALE. VICTOR M. CLARK & STAFF, Auctioneers 6402 Hollywood Blvd. Phone 436-402 (List Your Property With Us. We Sell 'Em.)

AFTER CHURCH SUNDAY NOON

—OR—

AFTER YOUR TRIP SUNDAY EVENING

YOU'LL ENJOY EATING AT LAMSON'S

Delightful Pastry and Cakes Candies and Ice Cream Delicious Fountain Drinks

Try Our Special Sunday Dinner Tomorrow Lamson's Confectionery & Cafe (Successor to Cook's) 128 South Brand Boulevard, Glendale

Admirer of Gardner Escapes from Prison Promissory Note Tax Sustained by House

RENO, Nev., Mar. 1.—In his second escape within two months, Robert Cole, a former race driver, is missing from the state penitentiary at Carson. He made a dash for freedom in an automobile New Year's day but was recaptured ten days later. A check on prisoners yesterday proved Cole missing again. He is an avowed admirer of Roy Gardner.

WASHINGTON, Mar. 1.—The House late yesterday sustained the tax of two cents on each \$200 represented in promissory notes, and the provision requiring members of the new board of tax appeals to be confirmed by the Senate after being named by the president. News Want Ads for results.

AUCTION Tuesday, March 4th, at 1P. M.



115 N. Sinclair Ave., Glendale, Cal. 119 N. Sinclair Ave., Glendale, Cal. TO CLOSE AN ESTATE One five and one six room new modern bungalows. Located in the finest residential district in Glendale. Near new High School and just half block off East Broadway. These are exceptional homes, finished the one in genuine gumwood and the other tiffany in oil. The walls are decorated with artistically selected paper and the floors are select hardwood throughout. They are both very attractive inside and out and represent real value. Lawns and flowers in and several orange and lemon trees on each place. These properties must be sold on the above date at auction to the highest bidders. The owner, Dr. E. M. Woolgar, originally built these homes for himself and his son, but is locating in Oakland, Calif., and has directed us to sell. We will also offer vacant lot at auction in the same block. Inspect These Properties Any Time This Week and Attend These Sales On the Above Date. VICTOR M. CLARK & STAFF, Auctioneers 6402 Hollywood Blvd. Phone 436-469