

F

721

D418

1910

DENVER AND RIO GRANDE
RAILROAD CO.

CAMPING IN THE
ROCKIES

BANCROFT

LIBRARY

The Bancroft Library

University of California • Berkeley



Digitized by the Internet Archive
in 2007 with funding from
Microsoft Corporation

Camping *in the* Rockies



DENVER & RIO GRANDE
RAILROAD

Interesting Books on Colorado, Utah and New Mexico

Published by the Passenger Department

DENVER & RIO GRANDE SYSTEM

"Around the Circle"
 "With Nature in Colorado"
 "The Fertile Lands of Colorado and
 Northern New Mexico"
 "Ancient Ruins of the Southwest"
 "Descriptive Time Tables"
 "Panoramic Folder"
 "A Glimpse of Utah"
 "The Lands of Utah"
 "Camping in the Rockies and Vacation Estimates"
 "Natural Resources of Colorado and Utah"
 "Among the Rockies"
 "Hotels and Boarding Houses on the line
 of the Rio Grande"
 "The Railroad Red Book"

Any of the above books sent free on application to

F. A. WADLFIGH, Asst. Gen. Pass. and Ticket Agent..... Denver, Colo.
 J. D. KENWORTHY, Asst. Gen. Pass. Agent Pueblo, Colo.
 R. C. NICHOL, Gen. Agt.....299 Broadway, New York
 H. E. TUPPER, City Pass. Agt.....299 Broadway, New York
 EUGENE LOVENBERG, Trav. Pass. Agt.....299 Broadway, New York
 JAMES T. NEISON, Gen. Agt.....412 Park Bldg., Pittsburg, Pa.
 W. E. ZIRCKEL, Trav. Frt. Agent.....412 Park Bldg., Pittsburg, Pa.
 JOHN T. BOWE, Gen. Agt.....242 Clark St., Chicago
 R. J. VAN DYKE, Trav. Pass. Agt.....242 Clark St., Chicago
 O. P. APPLGATE, Trav. Frt. Agt.....200 Majestic Bldg., Detroit, Mich.
 J. E. CLARK, Gen. Agt.....409 Traction Bldg., Cincinnati, O.
 J. E. COURTNEY, G. A. F. & P. D.....923 Pierce Bldg., St. Louis, Mo.
 J. H. HARPER, Trav. F. & P. Agt.....923 Pierce Bldg., St. Louis, Mo.
 H. V. LUYSTER, G. A. F. & P. D., 210 Scarritt Arcade, Kansas City, Mo.
 O. T. SCHAEFFER, Cont. Frt. Agt., 210 Scarritt Arcade, Kansas City, Mo.
 F. L. FEAKINS, Gen. Agt.....219 S. 14th St., Omaha, Neb.
 W. H. DAVENPORT, Gen. Agt.....665 Market St., San Francisco, Cal.
 S. M. TATE, City Pass. Agt.....665 Market St., San Francisco, Cal.
 W. B. TOWNSEND, T. F. & P. A.....665 Market St., San Francisco, Cal.
 JOHN A. BECKWITH, City Pass. Agt.....1070 Broadway, Oakland, Cal.
 J. C. PATTON, Trav. Frt. and Pass. Agt.....San Jose, Cal.
 C. P. ENSIGN, Gen. Agt.....532 So. Spring St., Los Angeles, Cal.
 H. K. CAMPBELL, Pass. Agt.....532 So. Spring St., Los Angeles, Cal.
 W. C. McBRIDE, Gen. Agt.....124 3rd St., Portland, Ore.
 E. B. DUFFY, Trav. Frt. and Pass. Agt.....124 3rd St., Portland, Ore.
 A. B. AYERS, Trav. Pass. Agt.....56 E. Broadway, Butte, Mont.
 I. A. BENTON, Gen. Agt., Pass. Dept.....Judge Bldg., Salt Lake City, Utah
 H. M. CUSHING, Trav. Pass. Agt.....Judge Bldg., Salt Lake City, Utah
 A. W. PARROTT, City Pass. Agt.....Albany Hotel, Denver
 A. McFARLAND, City Tkt. Agt.....All any Hotel Denver
 S. C. SHEARER, Trav. Pass. Agt.....Denver, Colo.
 E. S. CARD, City Pass. and Tkt. Agt.....Pueblo, Colo.
 W. H. CUNDEY, Gen. Agt., Pass. Dept.....Colorado Springs, Colo.
 B. W. ROBBINS, Gen. Agt.....Grand Junction, Colo.
 S. M. BROWN, Gen. Agt.....Leadville, Colo.
 P. B. McATEE, Gen. Agt.....Durango, Colo.
 W. D. SHEA, Trav. Frt. and Pass. Agt.....Santa Fe, N. M.

or

**S. K. HOOPER, General Passenger and Ticket Agent
Denver, Colorado**

Camping in the Rockies

A Guide to the Most Desirable
Camping Places in Colorado,
Utah and New Mexico

TO WHICH HAVE BEEN
ADDED

Vacation Estimates

Giving the Cost of a Variety of Outings in
the Rocky Mountain Region

NINTH EDITION
185,000 Copies

Copyright 1910 by
S. K. Hooper, General Passenger and Ticket Agent

Issued by the Passenger Department
of the

**DENVER & RIO GRANDE
SYSTEM**

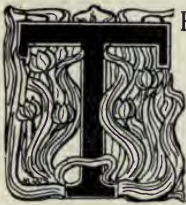


Trout Fishing in the Black Cañon of the Gunnison, near Sapinero.



Out-Door Life in the Mountains

AN INTRODUCTION BY EDWIN L. SABIN



THE Rocky Mountain region included within favored Colorado, Utah and New Mexico is by every phase the one camping place for the world. Climate, scenery and conveniences make tent-life here perfection. Moreover, to the sportsman is proffered game in abundance; to the natural scientist, animal and plant life of all zones from the temperate to the frigid, and rock formations as varied; to the archaeologist, cliff-dwelling and pueblo ruins centuries old; to the artist, marvelous vistas of valley, range and plain, most beautiful effects of sunshine, cloud and shadow, entrancing sunsets and sunrises; to the weary and ill, peace and health; to the well of mind and body, added vigor and feats for testing their endurance.

Gloriously sunny days, restful cool nights, no dampness, an atmosphere sparkling, crisp, and so transparent as to be a treat to the eyes, with every breath a subtle healing draught of pungent pine and cedar and fragrant sage—this combination alone makes camping in the Rockies a constant surprise to the initiate and a never-palling delight to the veteran.

Camping Perfection

Such camping should appeal strongly to the head of a family. It is safe and practicable to take wife and children and to spend weeks or months, the tent for a habitation. Elsewhere this is difficult: dampness and consequent colds,

sticky heat, insects, dirt, monotony of sites, warmish water, and other annoyances turn family camping into somewhat of a chore. But in the hospitable Rockies the rains are merely short, stirring thunder-storms which quickly pass, and are succeeded by brilliant, drying sunshine; chance colds are combatted by deep breathing and bounding circulation; the heat is grateful, not sticky, for because of the thin air one may be instantly cool in the shade, and perspiration rapidly evaporates; mosquitoes need not be thought of, so limited they are, and they never bother at night; dirt is mainly pleasant pine needles, granite, or porous sand which promotes sanitation; no site is monotonous, and no two sites are alike; water is icy, so that every stream, fed by the melting snows, is a refrigerator.

There always is something for every member of the family to do: for the adults, trout fishing, mountain climbing, berrying, exploring some virgin gulch, roaming stately timber or waving meadows, collecting mountain wild flowers, taking pictures of peak, slope and stream, following bear, beaver or deer sign; for the children, rambles without fear of snake or noxious wet, all day in the genial sun, surrounded by a thousand wonders which otherwise they never could experience.

After the day ensues invariably a restful night. At the setting of the sun a delicious coolness rushes in. There is no sleep like sleep amidst the open in the Rocky Mountains.

Camping Conveniences

Even the amateur will appreciate a camping region where the weather is absolutely dependable, and helpful. In addition, there is the abundance of pure, cold running water, and of dry fire-wood. Again, the problem of transportation and accessibility must not be overlooked. Throughout the Rockies of Colorado, Utah and New Mexico extends the Denver & Rio Grande Railroad System, connecting town and wilderness. With camp goods stowed in the baggage car, by Pullman the camper may ride a hundred or a thousand miles, to the locality of his selection, may disembark and plunge into the great friendly open, there to establish his temporary home. When he wants supplies, the railroad will bring them to some near point; when he must leave, speedily he is whirled back to civilization. Thus he saves precious time and much discomfort. On the Denver & Rio Grande camp equipage is accepted and checked as baggage.

A camping trip by automobile into the very heart of the mountains is entirely feasible. The soil of the Western country contains enough sand and adobe so that it dries and

hardens very quickly and is wonderfully resilient. The climate keeps it in best condition. The old stage-roads still furnish practical highways, there are many most excellent county roads, and particularly in the fruit districts of the Grand River, and south in Colorado, the ranchers themselves maintain good roads with their own automobiles. Yes, a motoring trip through scenic Colorado, New Mexico and Utah would be greatly enjoyed. The Denver & Rio Grande railroad is always accessible, in case of emergency, or as a convenience, and its agents will supply information and suggestions.

Camping Sites

The Rocky Mountain region, as covered by the Denver & Rio Grande, provides every variety of sites for the camper. He has a choice of elevations, from 4,000 feet,



On the Way to Camp

as in the fertile valley of the Grand River or in the Salt Lake country of Utah, up to 10,000 feet, as upon the sunny slopes of Marshall Pass and by the Cumbres Divide along the dashing Osier. There are blue lakes, such as Trout Lake, Twin Lakes, Utah Lake, Lake San Cristoval; there are green or tawny rivers, such as the Eagle, the Arkansas, the Rio Grande, the San Juan, the Grand, the Gunnison, and their tributaries; there are deep cañons where camp and pines and river are shut in together, the sun by day and the

stars by night looking in; spangled meadows like those of the Gunnison and the Tomichi; lofty passes where the aspens yellow early and where, behind the tent, is a snow-bank; emerald valleys broad like the San Luis, or small and sequestered, nestled among the hills; clear, tingling mountain brooks innumerable; flowery parks hedged by the dark timber. While everywhere are the pines and spruces and aspens, and the wholesome silvery sage, with the grey granite and the snowy crests sentinel about; spring and summer below, white-capped winter above.

In districts like the Mesa Verde of Colorado, the Pajarito Park of New Mexico, the lower Green River of Utah, the tent of Today may be erected amidst the deserted habitations of a far Yesterday. Or among the Pueblos of the lower Rio Grande may be observed the descendants of that vanished people.

Camping Supplies

The camper in the Rockies should not be niggardly with his supplies. In the dry atmosphere foods keep indefinitely—subject, of course, to the appetite. Ice cold water is, as said, plentiful. Bedding should not be stingy. The nights are made for sleeping under blankets; and above 7,000 feet there is apt, any night, to be a frost; not killing but sharp. Think of that, you dwellers of the low and sultry levels! Blankets are superior to comforters, for when wet they dry quicker. Wool is the material to be worn next to the skin—or a preponderance of wool. Medium-weight underwear is light enough. For outer garments khaki is much in favor for both men and women; corduroy is standard, but is more bulky. However, it is warm and weather-proof. Stout leather gloves (horse-hide is excellent) should be included, to be used in climbing among the rough rocks and trees; and equally stout shoes, with nailed soles—the heels particularly being thus reinforced. High shoes are in vogue; but shoes of ordinary uppers, and canvas leggings or puttees will be found sufficient. Thus the legs will be protected against rock and brush, and the ankle will have more freedom. Short divided skirts are the proper attire in this respect for women. Overalls are splendid for the children, and men do not commit any mistake in donning them. A mackintosh should not be forgotten, to be used when sudden showers sweep over; and as dews are sometimes heavy, water-proof shoes are a comfort.

Tents may suit the party taste and means. Because of the dependable climate the simple lean-to, wherein one may

stick his head at night, is entirely feasible, and this may be constructed with just a tarpaulin; but a family will require more.

Camping Suggestions

In all the streams above 7,000 feet or thereabouts the trout will be found in cold storage, waiting; in the streams lower, such as the lower Grand, are other fish—a so-called salmon, cats, etc. The fly fisher may pin his faith to the neutral tints. Anybody who takes in his kit the coachman, grey hackle, professor, red ant, willow, black gnat, and similar combinations, will not far miss his guess. Grasshoppers for the bait fisher are plentiful throughout the summer; earth-worms should be imported, although where there is sufficient moisture they seem indigenous to some localities. The rod should be a light fly or bait rod, nine or nine and a half feet long. The casting rod as used in the East for bass, pickerel, etc., is not practicable for mountain streams.

Supplies of all nature may more conveniently be purchased at the starting-out place—as Denver, Pueblo, Salt Lake, or intermediate towns. And there will be within reach of almost any camp a store, in town or at cross-roads, where ordinary wants can be filled.

The camper in Colorado, Utah and New Mexico is asked to read and to observe the game laws and the forest reserve regulations against fire. The wild life, in animal, tree and shrub, is one of the great charms of the Rockies; and the person who wantonly destroys it is working a wrong upon himself and an injustice upon others. Even the chipmunk and the columbine have their right to consideration.

Care, also, should be exercised in shooting with the high-power rifle.

Camping Seasons

The Rockies invite from May until into December. The late spring has its appeal of fresh, bursting verdure; the summer allures with its freedom and coolness; for those who have experienced it, the fall is supreme, when the frosts are painting the long slopes with yellow and maroon, and the days are a constant crisp October, when the big trout are hungry and the deer are sleek and fat. But spring or summer or fall, it is the Rockies, ever the glorious Rockies, white-crested, blue-hazed, piney and murmurous and waiting. Whoso visits them once, thereafter yearns to come again.



Where to Camp

DENVER TO GRAND JUNCTION

(COLORADO)

Main Line -- Standard Gauge

SEDALIA

(25 Miles from Denver. Elevation, 5835 Feet.)

Good camping grounds in Devil's Head country, fourteen miles distant, fine canon scenery, pine and spruce trees. Plenty of good spring water. Good roads and some hunting in open seasons. There are bear around the foothills, about seven miles from Sedalia. Camp grounds on public domain. Supplies and livery at Sedalia.

CASTLE ROCK

(32 Miles from Denver. Elevation, 6218 Feet.)

Some camping grounds in this neighborhood, on Plum Creek. Climate all that could be desired. Supplies at Castle Rock, and from ranches in vicinity.

LARKSPUR

(43 Miles from Denver. Elevation, 6668 Feet.)

Good grounds one-fourth to one mile from station. Private land nominal or no rental. Well timbered, fine scenery, some trout fishing in Plum Creek. Perry Park, six miles distant, is an ideal camping ground, well watered, fine scenery and timber. Hotel accommodations. Private grounds, but arrangements can be made for campers at nominal rental. Supplies at Larkspur. Ranches take summer boarders.

PALMER LAKE

(52 Miles from Denver. Elevation, 7237 Feet.)

Fine camping grounds one-fourth to two miles from station. Easy walking distance or can be reached by carriages, which meet all trains. Grounds are public and no charge for their use. Well timbered, excellent water, beautiful scenery and delightful climate. Fair trout fishing in North and South Monument Creeks, Stone Canon, Cook Creek, etc. Supplies and good livery at reasonable rates.

GLEN PARK

(52 Miles from Denver. Elevation, 7350 Feet.)

The railway station for Glen Park is Palmer Lake, as noted above. At this point is located the Colorado Chautauqua, where sessions are held each summer. Here is one of the most delightful camping places in the Rocky Mountains.

The spot is ideal and the Chautauqua has improved it to a perfect degree. Arrangements can be made for board and tents at reasonable rates, together with the summer course of study.

PINE CREST

(53 Miles from Denver. Elevation, 7500 Feet.)

One mile from Palmer Lake. Fishing in Monument and South Monument Creeks and in the reservoirs. Thirty cottages, eight designs. Cottages built to suit the tenants with modern conveniences, for sale or rent. Hotel accommodations at The Inn for cottagers and transients. Dancing pavilion, modern steam-heated swimming pool, billiards and pool, bowling alley, six tennis courts.



Looking Across Monument Valley from Palmer Lake

MONUMENT

(56 Miles from Denver. Elevation, 6972 Feet.)

Good camping grounds half mile from station, on both public and private property, but permission to camp can be secured. Good fishing in Monument reservoir and creek. Nearest supply point at Monument.

COLORADO SPRINGS

(75 Miles from Denver. Elevation, 6036 Feet.)

The Pike's Peak region affords many delightful locations for campers. In the vicinity of Colorado Springs there are many such sites, made easily accessible by the suburban steam and electric railways. Accommodations may be secured at reasonable rates near the entrance to Cheyenne Canons, at Manitou, in Crystal Park, which is to be opened

as a resort for the first time in the summer of 1910, at Cather Springs, Rosemont, Clyde and St. Peters on the Short Line, at the Ute Pass resorts, in Mt. Manitou Park, and at the Halfway House and other points along the Pike's Peak Cog Road; at these various places there are many furnished and unfurnished tents and rustic cabins which may be secured, while there is also in some, good free camping ground. While camping is prohibited in the city park system and on the city water sheds, there are numerous shady nooks and cool retreats on the public domain where no charge is made for rental. The manifold attractions of Colorado Springs and Manitou during the summer months make the Pike's Peak region particularly delightful for the summer camper and afford the unusual combination of life in the heart of the mountains with all the conveniences of the modern city close at hand. Camping supplies of all kinds, together with livery outfits and



An Ideal Camping Spot in the Rockies

food, can be obtained at Colorado Springs, Colorado City and Manitou, and any one of them will serve as headquarters for mail. There are a great number of hotels and boarding houses at all these points, and it is conservatively estimated that the Pike's Peak region can satisfactorily accommodate upwards of 10,000 visitors during a single day. While fishing opportunities are limited, Colorado Springs is the outfitting point for many of the better known fishing resorts along the western section of the D. & R. G. The Secretary of the Chamber of Commerce at Colorado Springs or the agents of this company at any of the above named points will cheerfully furnish more detailed information upon application.

COLORADO CITY

(77 Miles from Denver. Elevation 6128 Feet.)

On Manitou Branch of the Denver & Rio Grande R. R. from Colorado Springs.

There are many good camp grounds in the neighborhood of Colorado City along the Fountain, and adjacent to the Garden of the Gods. The attractions of Manitou and Colorado Springs are set forth elsewhere in this book and apply equally well to Colorado City, which lies midway between the two points. The scenery is particularly beautiful and the climate all that could be desired. Supplies, livery and postoffice at Colorado City.

MANITOU

(80 Miles from Denver. Elevation, 6336 Feet.)

On Manitou Branch of the Denver & Rio Grande R. R. from Colorado Springs.

Many persons camp within the city limits of Manitou during the entire summer, and arrangements can be made for use of vacant property at nominal rental. Furnished and unfurnished tents and cabins may also be rented at reasonable rates. The principal camping grounds are in the vicinity of the Iron Spring, in Ute Pass, at the mouth of Williams Canon, at points along the Cog Road, in Crystal Park and on Mt. Manitou. There is little fishing and no game to speak of, but the manifold attractions of Manitou render it one of the most desirable places to spend the summer for rest and quiet. Many springs noted for their curative properties abound, and altogether Manitou will be found an ideal place for camping. There are many good hotels and boarding houses. All manner of supplies may be secured in the town at very reasonable rates, and there are several large livery establishments, with excellent carriages and saddle horses. Manitou is located at the foot of Pike's Peak, and that, together with the proximity of the Garden of the Gods, Glen Eyrie, Ute Pass, Williams Canon, Cave of the Winds, Cliff Dwellers' Canon, Crystal Park, Mt. Manitou Incline railway, and many other points of historic and scenic interest lend beauty and romance to the surroundings.

PUEBLO

(119 Miles from Denver. Elevation, 4672 Feet.)

There are no good camp grounds in the immediate vicinity of Pueblo. Beulah Springs, twenty-seven miles southwest, is a fine resort and well patronized during the summer season and has good hotel accommodations. Fine, cool springs of iron and soda, beautiful scenery, fine drives and trails, fair fishing. Camp grounds plentiful, good water, shady and cool. Grounds private, nominal rental. Supplies of all kinds and first-class livery at reasonable rates to be obtained at Pueblo.

FLORENCE

(152 Miles from Denver. Elevation, 5199 Feet.)

Good camp grounds on Beaver Creek, ten miles north of town. Good fishing in Beaver Creek and some hunting. Camp grounds on public domain. Good roads to camp grounds. Florence is the supply point.

CANON CITY

(160 Miles from Denver. Elevation, 5344 Feet.)

Between Canon City and the entrance to the Royal Gorge, six miles west, there are many places where campers

may find suitable locations. The Royal Gorge Hot Springs, with good hotel, are adjacent and afford healthful bathing. The soda and iron springs on western border of the town are noted for their health-giving properties. A beautiful trip may be made from Canon City to the summit of Royal Gorge, eight miles, via the famous Sky Line Drive. Canon City is nearest point for supplies, where fishing and camping outfits may be obtained, as well as livery for excursions into the mountains. Good fishing in Beaver Creek.

PARKDALE

(171 Miles from Denver. Elevation, 5800 Feet.)

This station is at the western end of the "Royal Gorge," and there is ample room for campers on the bank of the Arkansas River on land belonging to the railroad company.

TEXAS CREEK

(184 Miles from Denver. Elevation, 6210 Feet.)

Good camp grounds near Hillside and Verdemont stations on Westcliffe branch, on public and private land. Hunting and fishing good. Texas Creek is the supply point.

WESTCLIFFE

(209 Miles from Denver. Elevation, 7861 Feet.)

On Westcliffe Branch of the Denver & Rio Grande R. R. from Texas Creek.

The Wet Mountain Valley, of which Westcliffe is the postoffice and supply point, is prolific in camping grounds. There are many streams and lakes abounding in more or less trout, and all in a beautifully timbered region, where the climate is most desirable. The entire valley is occupied by fine farms and ranches, but camp sites may be had at little or no cost. The ranchmen will furnish small supplies at reasonable rates. Livery and food supplies to be obtained at Westcliffe.

COTOPAXI

(192 Miles from Denver. Elevation, 6385 Feet.)

Splendid camping grounds, adjacent to station, on public domain. No fishing, but some hunting,—deer, bear, grouse, etc.,—ten to fifteen miles from station. Cotopaxi is the supply point.

HOWARD

(203 Miles from Denver. Elevation 6718 Feet.)

Outfitting point for Pleasant Valley. One of the most favored localities in the state for climate and scenery. Situated between Salida and the Royal Gorge, through which flows the Arkansas river and into which empties Cottonwood, Hayden, Stout, Cherry, West, Howard and Bear creeks, which come tumbling in from the everlasting snows of the Sangre de Cristo range of mountains on the south at the rate of a thousand feet per mile, and Badger Creek from the north. Bear, mountain lion, bob cat, coyote, deer, grouse and good camping on all these creeks.

SALIDA

(215 Miles from Denver. Elevation, 7050 Feet.)

Fine camp grounds at Wellsville, six miles east on the Arkansas river. Hot Springs and baths for bathing; camp grounds free to patrons of the springs. Good wagon road from Salida. Poncha, five miles southwest of Salida, near hot springs and bath house. Camp grounds free; good fishing in South Arkansas. Fine mountain camp grounds in North Fork country, eighteen miles from Salida; excellent fishing and delightful climate. Salida is nearest supply point, and livery may be obtained at reasonable rates.

VILLA GROVE

(245 Miles from Denver. Elevation, 7972 Feet.)

On the San Luis Valley Branch of the Denver & Rio Grande R. R. from Salida.

Valley View Hot Springs, within one mile of station, are noted for their curative qualities, and health seekers desiring to camp near these springs can be accommodated. Supplies at Villa Grove.



Upper Twin Lake, Colorado

MOFFAT

(263 Miles from Denver. Elevation, 7579 Feet.)

On the San Luis Valley Branch of the Denver & Rio Grande R. R. from Salida.

Perhaps the best section of Colorado for duck shooting. In season the flight of ducks here is unsurpassed. Conveyances and supplies readily obtained.

CRESTONE

(274 Miles from Denver. Elevation, 7881 Feet.)

On the San Luis Valley Branch of the Denver & Rio Grande R. R. from Salida.

Good camp grounds on Crestone Creek; cottonwood timber, good water and some fish; public land, no charge. Crestone is supply point.

BUENA VISTA

(240 Miles from Denver. Elevation, 7968 Feet.)

Good free camping grounds on Arkansas River and Cottonwood Creek, short distances from town. Fine camp grounds at Cottonwood Lake, nine miles distant, good fishing in streams and lake, and grounds well timbered. Livery and supplies at Buena Vista.

TWIN LAKES—(Granite.)

(257 Miles from Denver. Elevation, 8943 Feet.)

Twin Lakes, nine miles distant from Granite by stage or private conveyance, is one of the most delightful and romantic spots in Colorado. The scenery is superb and the fishing excellent, and the camp grounds on public lands are well timbered, shady and cool. Cottages may be rented if desired, and there are good hotel accommodations. Hotel Campion will run automobile service between the lakes and Leadville daily. This is the home of the land-locked salmon and Mackinaw trout, which at their prime weigh from ten to twenty-four pounds, affording the fisherman the greatest sport to be had in the state. Long distance telephone at Twin Lakes. Supplies from Leadville or Granite.

PANDO

(293 Miles from Denver. Elevation, 9199 Feet.)

Situated in Eagle Park, and the first fishing camp on the Eagle River; sport excellent from the opening to the closing of the season. Good camping grounds. Outfit from Leadville. Postoffice and telegraph station at the depot.

LEADVILLE

(275 Miles from Denver. Elevation 10,000 Feet.)

This great mining city lies almost in the center of some of the best trout fishing in Colorado. In the immediate vicinity are the Arkansas River, Tennessee River and Lake Creek, and the beautiful Turquoise and Evergreen Lakes, fed from clear ice cold streams from the Saguache Range. All abound in trout. Good camping grounds on public and private lands.

Located near Leadville is one of the largest and best equipped, United States fish hatcheries, which distributes enormous quantities of young trout.

Hotel Campion will run automobile service between Twin Lakes and Leadville daily. Here are abundant land-locked salmon and Mackinaw trout, weighing from ten to twenty-four pounds, and affording the greatest sport for fishermen to be had in the Rockies.

DILLON

(312 Miles from Denver. Elevation, 8859 Feet.)

On the Blue River Branch of the Denver & Rio Grande R. R. from Leadville.

Many good camp grounds within sight of station, or campers may secure horses and enter various canons adjacent. Three good streams, Blue River, Snake River and Ten Mile. Good fishing and hunting in open season. Supplies to be had at Dillon. Several good hotels at Dillon. Scenery unsurpassed. Camp grounds on public domain and well covered with timber.

RED CLIFF

(294 Miles from Denver. Elevation, 8608 Feet.)

Many good camping grounds on public lands. South for distance of fifteen to twenty miles is an unsettled mountain country abounding in springs and small streams, with finest mountain scenery, including the Mount of the Holy Cross. North for 100 miles is wild mountain country. Piney Lake



Camping at the Foot of Mt. of the Holy Cross, Colorado

is a considerable body of water on mesa twelve miles north and good place for camping. From two to four miles east is the valley of the Eagle; both east and west of station the Eagle is noted for fine trout fishing, and some hunting in open season. Good grazing for horses and ample fuel. Red Cliff nearest supply point. Teams and saddle horses at reasonable rates.

MINTURN

(302 Miles from Denver. Elevation, 7825 Feet.)

Good camp grounds within short distance from the station on railroad company's lands, for which no charge will be made. Eagle River, with excellent water and abounding in trout. Splendid fishing and good hunting up Gore Creek, and good camping grounds. Ranches supply bread, butter, eggs and milk.

AVON

(308 Miles from Denver. Elevation, 7465 Feet.)

Situated at the junction of Eagle River and Beaver Creek. Fine fishing, grouse and deer hunting in season. Beaver Lake five miles from station. The flora of Beaver Creek is luxuriant and abundant,—ample material for botanists and lovers of nature. For mountain climbing “Old Baldy” and “Bruin Mountain” afford attraction. Water of creek certified medically pure. Well wooded and grand mountain scenery.



On Beaver Lake, near Avon

BERRY'S RANCH

(312 Miles from Denver. Elevation, 7300 Feet.)

This is the well-known fishing point on the Eagle River, often called the “The Frenchman’s.” Also excellent fishing up Lake Creek, where good camping grounds are available. Supply point, Avon.

WOLCOTT

(319 Miles from Denver. Elevation, 6976 Feet.)

This station is situated on the Eagle River, which is one of the famous trout streams of the state; camping grounds close to station. There is a good hotel at this point. This is the most accessible route to reach Piney Lake and Creek; good wagon road, which is used daily by the ranchmen located in the neighborhood of the lake; from Wolcott the distance is only twelve miles.

EAGLE

(329 Miles from Denver. Elevation, 6598 Feet.)

Good public camping grounds, well timbered, fine scenery and excellent water almost any desired distance from

the station. Good trout fishing in the Eagle River and Brush Creek. Hotel, livery and food supplies to be obtained at Eagle.

GYPSUM

(336 Miles from Denver. Elevation, 6325 Feet.)

Sweetwater Lake, twenty miles distant, by good wagon road; one of the beauty spots of the state, fishing unexcelled. Hotel accommodations good and the drive from Gypsum up the Grand River cannot be surpassed for diversity of scenery, beauty and ruggedness. Hotel, good fishing, excellent camp grounds on public land. Gypsum Canon ten miles distant; fine camp grounds, good fishing. Livery and supplies obtainable at Gypsum.

SHOSHONE

(357 Miles from Denver. Elevation, 6109 Feet.)

In the Canon of the Grand, 350 miles from Denver. Elevation 6,119 feet. Some good camping grounds, with the marvelous Hanging Lake and Coffee Pot Caves nearby. Good hunting in season.

GLENWOOD SPRINGS

(360 Miles from Denver. Elevation, 5751 Feet.)

Many good camp grounds on No Name and Grizzly Creeps, three to seven miles from town. Canon Creek eight miles, Roaring Fork one mile, are excellent fishing streams, both reached by good wagon roads. Grouse shooting in foothills nearby. Bob cat and mountain lion hunting within five miles of town. Good spring duck shooting five miles distant. Fine scenery, well timbered, excellent water, good fishing. Easily reached by good roads. Livery, camp and food supplies obtainable at Glenwood Springs, which is nearest postoffice. Glenwood Springs is one of the most noted resort points in the inter-mountain region; has marvelous hot springs, elegant bathing facilities, many hotels, one the finest resort hotel on the continent.

CARBONDALE

(373 Miles from Denver. Elevation, 6181 Feet.)

On the Aspen Branch of the Denver & Rio Grande R. R. from Glenwood.

Ideal camping grounds within reasonable distance, ranging from five to thirty miles; reached by team from Carbondale or by taking Crystal River Railroad to Redstone and Crystal River & San Juan Railroad to Marble, in the heart of the mountains. Grounds are all public, with exception of private park at Redstone. One can find either mountain canons or timbered parks. Excellent view of Mt. Sopris, which rears its head over 12,000 feet above sea level. Many beautiful canons, through which flow clear streams, affording most excellent fishing. Good hunting for deer, elk or bear in the more rugged portions of the mountains in open seasons. The Crystal River and all its tributaries afford ideal country for camping. At Hot Springs, on the C. R. R., twelve miles from Carbondale, are hot springs, affording good bathing. No charges are made for any of the grounds, all being public. Carbondale, Redstone, Marble and Crystal are points at which supplies and mail can be secured.

EMMA

(382 Miles from Denver. Elevation, 6610 Feet.)

On the Aspen Branch of the Denver & Rio Grande R. R. from Glenwood.

Good fishing and camping grounds (public) on Snow Mass Cr  ek, six miles above Emma. Mouth of Snow Mass Creek may be reached via D. & R. G.; then there is good wagon road up the creek for ten miles. Supplies may be had at Emma. Nearest postoffice, Snow Mass.

THE CAPTURED BEAR.

Bringing Him Into Town



A Frolic with the Captive

ASPEN

(401 Miles from Denver. Elevation, 7874 Feet.)

Numerous fine camping places near Aspen, up Hunter Creek, Castle Creek and Roaring Fork River, nearest being three miles from postoffice, and from that distance all the way up to a day's drive. Plenty of conveyances can be had to take parties to these places, it being arranged to call for

them at a given time. Supplies may be had at Aspen at reasonable prices. Camping spots generally located close to streams, with timber, brush and mountains adjacent. Very little hunting, but trout fishing on any of the streams named.



A Morning's Sport near Aspen

NEW CASTLE

(373 Miles from Denver. Elevation, 5562 Feet.)

Camp grounds of first-class character all the way from two to seventy-five miles from the station. They are on the public domain, well timbered, good water, fine fishing and hunting in the open seasons. Situated on Elk and Canon Creeks. Livery and food supplies obtainable at New Castle, which is nearest postoffice. It was from New Castle that President Roosevelt entered the mountains for his famous bear hunt.

RIFLE

(387 Miles from Denver. Elevation, 5310 Feet.)

South and West Main Creeks and Beaver Creek, six to ten miles south of station, afford excellent camp grounds. Upper Rifle Creek, Rifle Falls, Piceance Creek and Flag Creek, twelve to forty miles north of station, are all desirable camping locations; fair fishing and fine hunting in open seasons. Livery and supplies to be obtained at Rifle. Small supplies and horses may be obtained from nearby ranches. Rifle is also debarking point for the big game country in vicinity of Meeker, fully described elsewhere.

MEEKER

(42 Miles North of Rifle by Daily Stage.)

Meeker is situated in the heart of the finest fishing and game country in the state, and naturally the entire surrounding country affords many sites for the location of desirable camps for hunters, fishermen, health and pleasure seekers

generally. Meeker has excellent stores and livery and is headquarters for guides, and with this point as a base excursions into the game country, varying in distance from five to 100 miles, may be made, well repaying the participants for the outlay of time and money. The principal places are along the North and South Forks of the White River and on the White River itself, Marvine Creek, Trapper's Lake, Marvine Lakes and numerous tributaries of the streams named. Parties who prefer hotel accommodations to camping can be provided for at the hotels of Meeker, or at the game and fishing lodges known as Marvine Lodge, Patterson's Home, Mountain Dell Home and at various ranch houses along the



In the Big Game Country

river at very reasonable cost. Guides, horses, wagons, pack horses, dogs, fishing tackle, guns, ammunition, tents and camp equipment, together with all manner of food supplies, are obtainable at Meeker at reasonable rates. The game country around Meeker is prolific in all kinds of big game, and in the open season is the Mecca of many sportsmen from all over the United States. It was from this point that President Roosevelt made his famous lion hunting expedition. Meeker is the central point and the principal post-office, though mail may be sent to other points in the vicinity, depending on the location of the camp. Mr. W. E. Saltmarsh, Agent for the Denver & Rio Grande at Meeker, will give his personal attention to any requests for information, or will make advance arrangements for parties desiring to visit this region.

DE BEQUE

(417 Miles from Denver. Elevation, 4945 Feet.)

Grand Mesa Lakes twenty-five miles south, by private conveyance. There are thirteen lakes and fishing is excellent; they are under government control and camping and fishing allowed under certain restrictions. (Also reached from Delta, on the Marshall Pass Line.) Scenery and climate excellent, good water. Nearest postoffices and supply points, Hotchkiss, Paonia, Delta and De Beque. Glen Buelah Park, Antlers Lodge, Roan Creek and tributaries, Carr Creek and tributaries, lying five to thirty miles north of De Beque, afford excellent camping facilities, with splendid hunting and fishing in the open seasons. Some lands private, with nominal charge, and others on public domain. Ranches and lodges take boarders at reasonable rates. Livery and supplies to be secured at De Beque or Meeker.

GRAND JUNCTION

(450 Miles from Denver. Elevation, 4583 Feet.)

Golby's lake, twenty-five miles distant, affords good camping facilities, with excellent trout fishing. Grounds are on public domain and no charge for their use. The country is mountainous with plenty of timber and shade and delightful scenery and climate. Some large game in the open seasons. Grand Junction is nearest postoffice, and supplies of all kinds, together with first-class livery, may be obtained at reasonable rates.

PUEBLO TO DURANGO**Main Line****GRANEROS**

(146 Miles from Denver. Elevation, 5804 Feet.)

Rye and Greenhorn, both reached by stage from Graneros, the former being fifteen miles distant and the latter ten miles. Fine camping grounds at both places, fine shade, unexcelled water, high and cool, with no charge for use of ground for campers. Good hunting and fishing. Good board and lodging at either place in farm houses at about \$7 per week. Good hotel at Rye, \$7 to \$10 per week; very reasonable rates for saddle horses, mountain trails in fine shape and scenery very fine. All kinds of groceries can be obtained at the stores at either point at reasonable rates. There is a postoffice at each place, also telephone to all points in the state.

TRINIDAD

(210 Miles from Denver. Elevation, 5994 Feet.)

Twenty-five miles from Trinidad is one of the prettiest camping districts in Colorado. From the Spanish Peaks south to the Vermejo is a series of parks, with luxuriant grass and numerous streams flowing through. On the surrounding hillsides are forests of pine and spruce, interspersed with quaking aspen thickets, forming ideal places to camp. It is easy to find unoccupied government land on which to camp beside the different branches of the Purgatoire River, fed by the perpetual snows on the Sangre de Cristo Range.

Nearest postoffice, Stonewall, in the center of the Stonewall Valley. Railway station, Weston, on Colorado & Wyoming Railroad, eight miles from Stonewall. (Tourists who go to the Stonewall country can find excellent accommodations at the Duling Hotel or Cottonwood Hotel. Rates, \$1.50 per day or \$8.00 per week.)

Further south is Costilla Park, situated in the center of the range, consisting of many thousands of acres, through which flow the head waters of the Costilla River. Distance from Weston thirty miles. Hunting and fishing are better here than in the Stonewall Valley, but nearest postoffice and stores are in the valley. On the range there are bear, mountain sheep and deer. Good trout fishing in any of the streams.



A Camping Place in the Stonewall Valley, near Trinidad

Tents, supplies, fishing tackle and other equipment can be obtained in Trinidad, and, if preferred, teams can be hired there to take parties to the valley or to the Costilla.

One of the finest scenic drives in America has been recently completed between Trinidad and Raton, N. M., which is to form part of a grand interstate highway extending from Cheyenne, Wyoming, to El Paso, Texas.

LA VETA

(190 Miles from Denver. Elevation, 7024 Feet.)

Fine camp grounds on Wahatoya Creek, seven miles distant. Water clear and cold, fair fishing, beautiful scenery and many wild flowers, some timber. Cuchara Creek five to ten miles, excellent camp grounds, good water and fishing. Twelve miles south on this creek are the Cuchara Camps, where a number of well-appointed rustic cottages have recently been built, which can be rented at reasonable prices. A commissary has been provided, where campers can procure their supplies, while an open-air restaurant has been established for those who do not care to prepare their own meals. Middle Creek, five miles, good water and fishing,

fine sulphur springs and bath house. Excellent cure for rheumatism. Grounds private, but no charge for campers. Many ranch houses take boarders. Scenery very fine at all places named. La Veta nearest supply point.

GARLAND

(228 Miles from Denver. Elevation, 7936 Feet.)

Good camping grounds. One of the most popular locations is at Fort Massachusetts, on Ute Creek, seven miles from station. Fine trout fishing. Another fine locality is Trinchera Creek, noted for trout fishing, deer and grouse hunting. Mountain Home, five miles from station, is on this stream, being located in a valley twelve miles long and three miles wide, with timber-covered mountains on either side. Sierra Blanca is also located at this point. It is a three days' trip up this mountain and back, by wagon road and trails. En route three beautiful lakes are passed, 13,000 feet above sea level. All the grounds are open to the public. Livery supplies and guides can be procured at Garland.



Duck Shooting in the San Luis Valley, Colorado

ALAMOSA TO DURANGO

Main Line

ALAMOSA

(252 Miles from Denver. Elevation, 7546 Feet.)

Rio Grande flows through the town. Fair fishing with bait. Good duck hunting in the open seasons. Camp grounds along the river and at various points in the San Luis Valley. Supplies of all kinds, and livery at Alamosa.

WAGON WHEEL GAP

(312 Miles from Denver. Elevation, 8449 Feet.)

On the Creede Branch of the Denver & Rio Grande R. from Alamosa.

The country in the vicinity of Wagon Wheel Gap, South Fork, and in fact all up and down the Rio Grande for a distance of thirty miles will be found to be one of the most

delightful portions of the state, affording many beautiful spots for camping. The fishing in the Rio Grande, Goose Creek and other streams is excellent. At Wagon Wheel Gap are the famous Hot Springs, noted for their curative properties. The Hot Springs Hotel, with its new and strictly modern cottages, heated with hot water, and the magnificent bath house are situated on Goose Creek, a short distance from the Rio Grande. Supplies can be obtained at Creede and from the adjacent ranches. Good camp grounds are within a short distance of the railway. Teams are not necessary, except for excursions into the interior. Long distance telephone at Wagon Wheel Gap.



At Wagon Wheel Gap, Colorado

SOUTH FORK

(298 Miles from Denver. Elevation, 8188 Feet.)

On the Creede Branch of the Denver & Rio Grande R. R. from Alamosa.

Situated at the confluence of the South Fork and the Rio Grande. Good hunting and fishing. Camping grounds in vicinity, with nearby ranches, where supplies can be secured. Saddle horses may be hired for trips into the interior. Telephone connection with outside points. On the upper branch of the South Fork there are several large lakes well stocked with trout.

CREEDE

(321 Miles from Denver. Elevation, 8852 Feet.)

On the Creede Branch of the Denver & Rio Grande R. R. from Alamosa.

Creede is situated in the heart of the Rocky Mountains, close by the Rio Grande, one of the best trout streams in Colorado, and has over 200 miles of fishing streams and

tributaries within the borders of Mineral County, as well as some of the largest lakes in the state, all abundantly stocked with different varieties of trout. The great Clear Creek Falls and Clear Creek are considered among the finest trout waters in the state. These noted places are reached by good roads.

Creede also contains many other attractive features for the camper in its great mines, tunnels, mills, etc. The largest silver mine in the world is located here. During the hunting season much game is killed in this section, comprising deer, bear, lynx, etc.

Wagon Wheel Gap Hot Springs are located eight miles south of Creede. The surrounding mountains near Creede are full of interest to the tourist. The Wheeler National Monument Park is located but five miles away.

LA JARA

(266 Miles from Denver. Elevation, 7609 Feet.)

Plenty of good camping grounds, public and private, both free. Timber lands, grand scenery. Trout fishing, ducks, deer, bear, coyotes and rabbits. Conejos, Alamosa and La Jara Creeks. Supply point, La Jara. Climate unsurpassed; good water and grass.

ANTONITO

(280 Miles from Denver. Elevation, 7888 Feet.)

Good camp grounds on public domain on Rio Grande and Conejos River. One of the best fishing points in the state. Good duck shooting in open season. Antonito and Conejos nearest supply points.

ESPAÑOLA (N. MEX.)

(372 Miles from Denver. Elevation, 5590 Feet.)

On the Santa Fe Branch of the Denver & Rio Grande R. R. from Antonito.

Very good camping grounds from twelve to twenty miles away, on Indian Reservation. Public grounds. Teams can be hired at reasonable rates. The grounds are in canons and along the cliffs, and where the Cliff Dwellings are located. There are a number of small streams containing trout. There is but little game to be found. The postoffices are Espanola, Santa Cruz, Chimayo, Pojuaque, Santa Fe and Las Truchas, N. M., and supplies may be had at any of these places. The Pajarito Park Cliff Dwellings, near this point, are very interesting.

SANTA FE (N. MEX.)

(406 Miles from Denver. Elevation, 6968 Feet.)

On the Santa Fe Branch of the Denver & Rio Grande R. R. from Antonito.

Nearest camping grounds are located on the Pecos Reserve, a distance of thirty-five miles, reached by private conveyance at reasonable rates. A portion of the grounds are private, but terms for rental are reasonable. Grounds are beautifully timbered, located on the Pecos River, a very beautiful stream and well stocked with mountain trout.

OSIER

(318 Miles from Denver. Elevation, 9637 Feet.)

Good camp grounds, hunting and fishing. The wonderful Toltec Gorge, with its beautiful scenery and fine fishing, is only two miles away. Nearest supply point, Osier.

CHAMA (N. MEX.)

(344 Miles from Denver. Elevation, 7863 Feet.)

Good public camping grounds in and near the town, or on the Chama and Brazos Rivers, which are about twelve miles distant. Locations in timber or open ground. Tourists can secure teams at Chama at very reasonable cost. Fine trout fishing and all kinds of game—deer, bear, antelope, elk, mountain sheep. Chama is nearest supply point. The scenery in this section cannot be surpassed.

PAGOSA SPRINGS

(421 Miles from Denver. Elevation 7108 Feet.)

On the Pagosa Springs Branch of the Denver & Rio Grande R. R. from Pagosa Springs.

Good camping ground within town limits inside public park, on banks of the San Juan River. Good trout fishing from the Springs up the river and its tributaries for twenty-five miles. Streams abundantly stocked every year with brook, rainbow and native trout. Bors Lake, Palisade Lakes, Piedra Blanca and Little Blanca Rivers are reached over good roads and mountain drives, being distant from seventeen to twenty-five miles. Good bear hunting the year round. Splendid deer and grouse shooting in season. Country open for camping, heavily timbered, with mountain environment on all sides. Good permanent accommodations at all the lakes. Tents and camping outfits can be rented at reasonable figures. Nearest postoffice and supply point, Pagosa Springs.

DURANGO

(451 Miles from Denver. Elevation, 6520 Feet.)

No good camping grounds in immediate vicinity. Good location at a distance of twenty to twenty-five miles. Public grounds, free of charge. Fair fishing, plenty of timber, and very fine scenery. Teams can be procured at Durango to take parties to these grounds. Great numbers of fish are caught and there is considerable hunting at Emerald Lake. Nearest supply point and postoffice, Durango.

AZTEC (N. MEX.)

(482 Miles from Denver. Elevation, 5686 Feet.)

On the Farmington Branch of the Denver & Rio Grande R. R. from Durango.

Good camp grounds near station. Hunting and fishing fair. Cliff ruins accessible from this point. Aztec and Blanca, New Mexico, nearest supply points.

FARMINGTON (N. MEX.)

(496 Miles from Denver. Elevation, 5305 Feet.)

On the Farmington Branch of the Denver & Rio Grande R. R. from Durango.

Good camp grounds, public and private, near station. Good water and shade. Hunting and fishing fair. Farmington nearest supply point.

SALIDA TO GRAND JUNCTION

Main Line--Narrow Gauge

SARGENT

(257 Miles from Denver. Elevation, 8477 Feet.)

A number of good camping grounds along Tomichi Creek but a short distance from the station. Fishing in the stream very good, water excellent and scenery very fine. Sargent nearest postoffice and railway station; supplies from Salida or Gunnison.

DOYLE

(269 Miles from Denver. Elevation, 8062 Feet.)

Waunita Hot Springs, at the base of Tomichi Dome, ten miles distant by daily stage, is a very desirable place for summer camping. Elegantly appointed hotel of 100 rooms. Large sanitarium of forty rooms. Numerous furnished cottages. Large bath house and swimming pools. Some fishing and good camp grounds on public domain. Cochetopa Creek, about twenty miles from Doyle, is a fine trout stream, and there are many good camp grounds along its banks. Supplies can be obtained at Doyle.

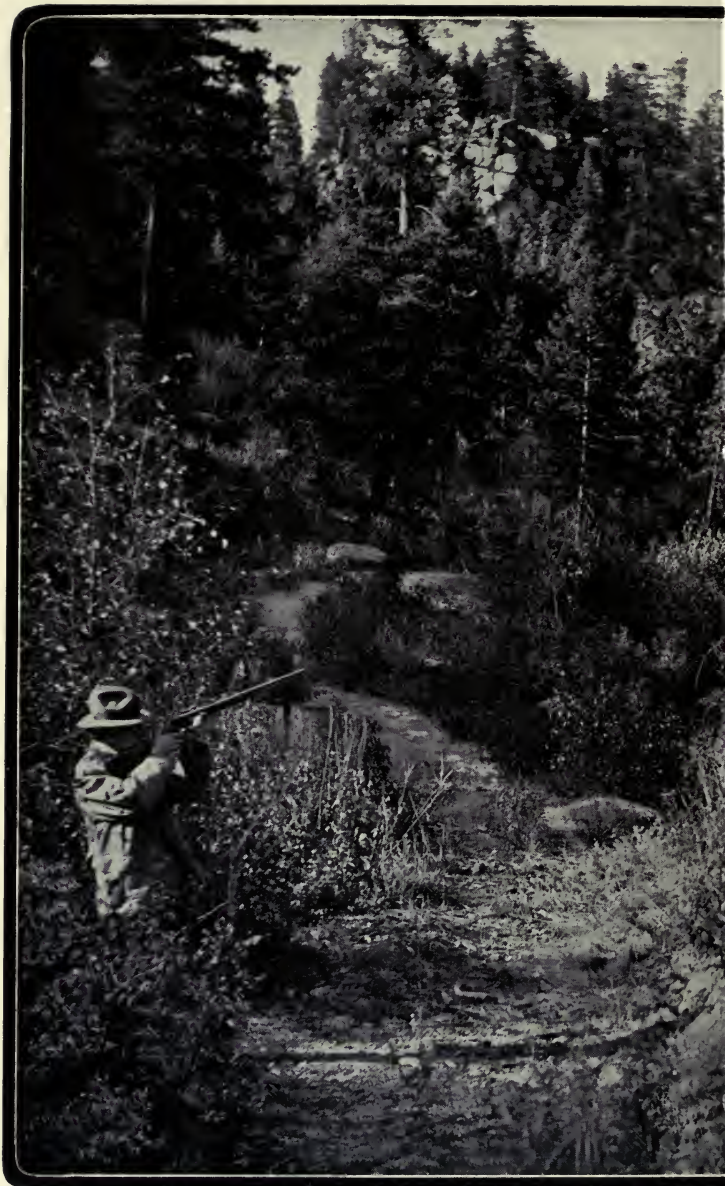
PARLIN

(277 Miles from Denver. Elevation, 7952 Feet.)

Some of the grandest Rocky Mountain scenery, including the renowned Pink Canon, in the immediate vicinity. Miles of the finest trout-fishing in the Tomichi and Quartz, and splendid hunting; plenty of deer, bear, coyotes, rabbits and prairie chickens within a mile or more of the station. Some supplies may be secured at Parlin, but most are gotten from Gunnison. Numerous good ranches are in the immediate vicinity, affording excellent accommodations for tourists. Comfortably furnished rustic cottages may be secured. Within easy excursion distance of the famous Black Canon of the Gunnison.



A Good Catch on the Gunnison





Here Health Comes with Recreation

GUNNISON

(289 Miles from Denver. Elevation, 7683 Feet.)

Finest trout fishing in the world from one-half mile to twenty miles from Gunnison on the Tomichi, Taylor, East and Gunnison Rivers, and Ohio and Beaver Creeks. Largest trout in the state, some ten and twelve pounds. Public camping grounds at many points along these streams. Deer, elk and bear, duck and grouse within radius of twenty-five miles. Being centrally located, Gunnison is a fine supply point for camping, hunting or fishing parties. Waunita Hot Springs nestles among the pines at the base of Tomichi Dome.

ALMONT

(300 Miles from Denver. Elevation, 8042 Feet.)

On the Crested Butte Branch of the Denver & Rio Grande R. R. from Gunnison.

Located at the junction of the Taylor and East Rivers, which form the Gunnison. Many good camp grounds on public domain near station. Excellent fishing in all streams in neighborhood. Fine resort hotel and cottages. One of the best fishing and resort places in the state.



Cabins at Almont, on the Gunnison

JACK'S CABIN

(305 Miles from Denver. Elevation, 8309 Feet.)

On the Crested Butte Branch of the Denver & Rio Grande R. R. from Gunnison.

Good hunting in season. Excellent fishing in both East and Taylor Rivers. Board may be secured at ranch, where teams may also be obtained. Postoffice, Jack's Cabin.

CRESTED BUTTE

(316 Miles from Denver. Elevation, 8878 Feet.)

On the Crested Butte Branch of the Denver & Rio Grande R. R. from Gunnison.

Large area of attractive camp grounds. Trout fishing excellent in two main streams and dozen tributaries. Small and big game—grouse, rabbit, mountain lion, deer and bear.—unsurpassed in radius of twenty miles. The fine water, healthful climatic conditions, and the diversified and magnificent mountain scenery combine to make this locality unusually enticing for those seeking rest and recreation. The flora of this section is remarkable for its many beautiful species. Crested Butte nearest supply point.

IOLA

(299 Miles from Denver. Elevation, 7434 Feet.)

There are many desirable camping grounds along the banks of the Gunnison within short distances from the station. The fishing in the Gunnison River is excellent, being among the



Cebolla, on the Gunnison River, Colorado

very best in the state. At Iola is a good hotel, and livery may be obtained there as well as supplies. Cebolla Hot Springs, eighteen miles from Iola by daily stage, where good hotel accommodations will be found, as well as ample camping grounds. Powderhorn is postoffice for the Hot Springs and vicinity.

CEBOLLA

(307 Miles from Denver. Elevation, 7354 Feet.)

One of the finest and most desirable fishing points along the Gunnison River. Has gained a world-wide reputation in recent years for the number and extraordinary size

of trout caught there. Cebolla River empties into the Gunnison at this point. Both streams are kept plentifully stocked with trout. Excellent hotel and fourteen log cabins. Long distance telephone in hotel.

SAPINERO

(314 Miles from Denver. Elevation, 7255 Feet.)

Numerous public camping grounds along the many beautiful mountain streams. Mountain trout in abundance in Elk Creek, Sapinero Creek, Pine Creek and Gunnison River. Up these streams ten to twenty-five miles, deer abound. Supplies and conveyances or burro trains with guides can be secured at reasonable figures. Beautiful scenery.

LAKE CITY

(351 Miles from Denver. Elevation, 8686 Feet.)

On the Lake City Branch of the Denver & Rio Grande R. R. from Sapinero.



Lake San Cristoval, Colorado

Good camping grounds from five to thirty miles distant, on public domain. Trout fishing close to town, in the Lake Fork of the Gunnison and in Henson Creek. Excellent fishing is also found five miles distant in Lake San Cristoval, one of the largest and most beautiful bodies of water in Colorado. Here is a magnificent twelve-mile drive, skirting the very edge of the lake. Cottages may be rented near the lake, and new boats have been prepared for summer tenants. Delightful climate and an ideal spot for camping. Some of the most magnificent scenery in the Rockies is found in this vicinity, while mountain climbers may try their skill on the precipitous Uncompahgre Peak, a few miles to the west. Supplies and livery at Lake City.

CIMARRON

(329 Miles from Denver. Elevation, 6906 Feet.)

Situated in Black Canon of the Gunnison. Fine camp grounds from two to fifteen miles from the station on Cimarron River; excellent fishing on the Gunnison River, and for twenty miles on the Big and Little Cimarron. Camp grounds on public domain adjoining streams, for which there is no charge; good water in stream and fine timber; scenery very beautiful and climate delightful. Cimarron nearest postoffice and supply point. Good board at Cimarron and at ranch houses at reasonable rates.

CEDAR CREEK

(341 Miles from Denver. Elevation, 6752 Feet.)

Good camp grounds on public domain adjacent to station. Fine camping grounds and fishing in River Portal, nine miles from station. Grand scenery in the Black Canon nearby.

MONTROSE

(352 Miles from Denver. Elevation, 5811 Feet.)

Montrose is situated in the heart of the great fruit belt, and on the Uncompahgre River. There is some game back in the foothills at the base of the Grand Mesa, and naturally many places where camps may be established to advantage. Livery and all manner of supplies obtainable at Montrose, which is also nearest postoffice.

RIDGWAY

(377 Miles from Denver. Elevation, 7003 Feet.)

On the Ouray Branch of the Denver & Rio Grande R. R. from Montrose.

Good camp grounds at Hortivells Lake, three miles distant. Private lands, no charge. Plenty of shade and fine scenery. Cow Creek five to eight miles, good fishing and fine water. Owl Creek ten to fifteen miles, fine camp grounds, good water and fishing, beautiful scenery. Livery and supplies can be procured at Ridgway at reasonable rates.

OURAY

(387 Miles from Denver. Elevation, 7721 Feet.)

On the Ouray Branch of the Denver & Rio Grande R. R. from Montrose.

Good camping grounds, both public and private, reached by private conveyance, from five to ten miles distant. Well timbered lands on the Uncompahgre. Magnificent scenery and delightful climate. Livery and all kinds of supplies to be obtained at Ouray.

DELTA

(373 Miles from Denver. Elevation, 4980 Feet.)

Many good camping grounds at Grand Mesa Lakes, and on Surface Creek, Ward Creek, Young's Creek and the Gunnison River, five to forty miles from Delta. The fishing is good and climate delightful. Most of the camp sites are located in the cedar timber and afford good shade and cool resorts. Postoffices at Cedaredge, Eckert, Austin, Hotchkiss, Paonia and Delta. Supplies may be obtained from all these points, though largest stores will be found at Delta.

HOTCHKISS

(398 Miles from Denver. Elevation, 5369 Feet.)

On the North Fork Branch of the Denver & Rio Grande R. R. from Delta.

Excellent camp grounds on La Roux, Crystal and Holy Terror Creeks and Gunnison River, ten to twenty-five miles distant. Situated on public domain, well timbered, abounding in game of all kinds, including trout, deer and bear, and amid magnificent scenery. Reached by good wagon roads and trails. Supplies, livery, etc., at Hotchkiss. Postoffices at Hotchkiss, Crawford and Maher.

PAONIA

(406 Miles from Denver. Elevation, 5694 Feet.)

On the North Fork Branch of the Denver & Rio Grande R. R. from Delta.

Splendid camping grounds on public lands on Holy Terror, Hubbard, Elk, Big Muddy, Little Muddy, Bear and Cow Creeks and Gunnison River, five to thirty miles from station by good wagon roads and trails. Camp grounds on timbered land amid a profusion of beautiful scenery, and abounding in game of all kinds, including trout, deer, elk, bear, etc. Supplies and livery at Paonia.

THE RIO GRANDE SOUTHERN RAILROAD (COLORADO)

PLACERVILLE

(404 Miles from Denver. Elevation, 7321 Feet.)

Good camping grounds from one-half to twenty miles distant, reached by team or saddle horse, grounds both public and private; no rental charge; both timber land and plains; very good scenery; trout fishing in creeks tributary to San Miguel River; small game. Nearest postoffices, Leonard, Saw Pit, Placerville and Norwood, last three towns being supply points.

VANCE JUNCTION

(415 Miles from Denver. Elevation, 8116 Feet.)

No good camping grounds or hunting or fishing near to station. Nearest point is Trout Lake. Good fishing in lake and some grouse in surrounding hills. Plenty of good water for domestic purposes. San Bernardo, two and one-half miles from lake, is nearest postoffice. Ophir, four miles from lake, is nearest supply point.

TELLURIDE

(422 Miles from Denver. Elevation, 8756 Feet.)

Telluride is located amid grand and impressive scenery, and on the slopes of the pine-clad mountains will be found many desirable locations for healthful camps. Good fishing in the South and Lake Forks of the San Miguel and Trout Lake, which are of easy access by rail. Telluride is a good outfitting point for the above fishing resorts, and livery, supplies, tents, etc., may be secured at reasonable rates.

OPHIR

(422 Miles from Denver. Elevation, 9236 Feet.)

Excellent camping grounds near Ophir, San Bernardo, Trout Lake and Lizard Head stations, on Trout Lake, South and Lake Forks of the San Miguel. Camp grounds on public domain, amid most magnificent scenery, on timbered or open land. Good fishing and hunting in open seasons. Post-offices at Ames, Ophir and San Bernardo. Supplies at Ames and Ophir.

TROUT LAKE

(426 Miles from Denver. Elevation, 9802 Feet.)

This magnificent sheet of water lies within a few steps of the railway and affords many delightful camp grounds. It is an ideal summer camping resort. Myriads of trout inhabit the lake, the climate and scenery are superb and the pleasures of a camp at this spot are many. Ranches border



Trout Lake, Colorado

the lake, where horses, boats and small supplies may be secured. There is no rental charged for camping. Supplies may be secured at Ames, Ophir and Telluride. Postoffices at Ames and Ophir.

RICO

(443 Miles from Denver. Elevation, 8737 Feet.)

Many delightful camping grounds on Dolores River, Coal Creek, Fish Creek, Scotch Creek and their tributaries, from two to twenty miles from station, amid grand scenery and delightful climate. Excellent mountain water in the streams and fine fishing and hunting in open seasons. Dunton Hot

Springs, sixteen miles distant, is fine resort with good bathing facilities and surrounded by excellent camp grounds. All camp grounds are in the midst of fine timbered region on public domain, affording cool, shady retreats. Rico and Dunton nearest postoffices and supply points. Good livery to be secured at Rico at reasonable rates.

DOLORES

(479 Miles from Denver. Elevation, 6957 Feet.)

Many good camping places, the most important being Dolores Hot Springs, about thirty miles distant, and the Cliff Houses are about twenty-five miles away. Grounds are public. There is a hotel at Hot Springs; scenery is beautiful, mountain and plain. Dolores and Cortez are supply points. Dolores is a good point from which to reach Cliff Houses. Some bear, deer, trout and all kinds of small game. Finest climate.

MANCOS

(499 Miles from Denver. Elevation, 7008 Feet.)

This is the debarking and outfitting point for the wonderful ruins of the ancient homes of the Cliff Dwellers. This is an outdoor journey and camping experience made doubly interesting by the antique ruins and delightful scenery. Journeys to the ruins can be made lasting from three days to as many months, and each day will be replete with new and startling wonders. Guides, camp outfits, horses and pack animals and all manner of supplies to be secured at Mancos. The agent of the Rio Grande Southern Railroad at Mancos will make advance arrangements with guides and liverymen for parties desiring to visit the Cliff Ruins, on application by mail. The Mesa Verde, where the Cliff Dwellings are located, has been recently set aside by Congress as a National Park, the superintendent's office being located at Mancos.

GRAND JUNCTION TO OGDEN

(UTAH)

Main Line

CISCO

(504 Miles from Denver. Elevation, 4375 Feet.)

Good camping grounds five miles distant, on an island in the Grand River. Abundance of timber and water. Good fishing and hunting. Salmon and other kinds of fish. Deer can be found in the neighborhood. Cisco nearest postoffice and supply point.

GREEN RIVER

(555 Miles from Denver. Elevation, 4080 Feet.)

Good camping grounds adjacent to station and for several miles up and down the Green River, reached by private conveyance. Private grounds mostly, but usually no objection to camping on same. Both timber lands and plains, the timber being along the river; cliffs and foothills near station, and mountains in plain view, but thirty to fifty miles distant. Plenty of fish common to the Green River, small game near station and large game plentiful (such as deer and

bear) twenty-five to forty miles out. Supplies, conveyances and packs can be secured at Green River station. A trip may be made by boat from here down the Green to the first Cataract and Grand Canon of the Colorado, near the junction of the Green and Grand, thence up the Grand to Moab. Fine scenery, fishing and hunting may be had on this trip.

PRICE

(619 Miles from Denver. Elevation, 5547 Feet.)

Good camping grounds at Strawberry, fifty miles from Price. Ground is public, reached by wagon. Good mountain water, plenty of timber and good grass. Scenery very fine. Plenty of mountain trout in Strawberry Creek. Nearest railway station, postoffice and general supply point, Colton. Good grounds also at Harper, thirty miles north, on stage line from Price to Ft. Duchesne. Good deer hunting. Plenty of timber, good mountain water. Nearest railway station, Sunnyside. Postoffice, Harper. Daily mail from Price.



A Vacation in the Mountains

COLTON

(644 Miles from Denver. Elevation, 7170 Feet.)

The Pleasant Valley Branch, between Colton and Scofield, affords beautiful camping and fishing grounds. Grounds mostly public. Mountain scenery, streams, small valleys and some timber. Fine trout fishing in the streams. Nearest postoffice and supply point, Colton.

SCOFIELD

(660 Miles from Denver. Elevation, 7675 Feet.)

On Pleasant Valley Branch of the Denver & Rio Grande R. R. from Colton.

Good camping grounds on Fish Creek in this vicinity. Public grounds. Very good fishing. Also other points two to five miles above station, in timber lands. Scenery

grand, altitude 8,000 feet, weather cool during entire summer. Teams can be had at Scofield to take parties to grounds. Good hunting for all kinds of small game—grouse, chickens, ducks; and deer occasionally within five miles of Scofield. Scofield nearest postoffice and supply point.

TUCKER

(658 Miles from Denver. Elevation, 6217 Feet.)

First-class camp grounds on Soldier Fork, Spanish Fork, Tie Fork, Clear Creek, Indian Creek and in Pleasant Valley, on public lands; climate delightful and scenery magnificent; well timbered lands. Fishing in all above streams is fairly good.



A Gamey One

THISTLE

(676 Miles from Denver. Elevation, 5033 Feet.)

Good camping grounds on Diamond Creek five to ten miles distant. Public grounds, reached by wagon. Good water in Diamond Creek, and usually good fishing. Timber along creek, good mountain scenery. Thistle nearest postoffice and supply point.

MT. PLEASANT

(715 Miles from Denver. Elevation, 5857 Feet.)

On the Marysvale Branch of the Denver & Rio Grande R. R. from Thistle.

Fair camping grounds twelve miles distant on Small Creek. Public lands, well timbered. Trout fishing fair. Fairview nearest postoffice and supply point, livery, etc.

MANTI

(737 Miles from Denver. Elevation, 5530 Feet.)

On the Marysvale Branch of the Denver & Rio Grande R. R. from Thistle.

Beautiful camping place at Funk's Lake, a natural reservoir in a basin, high mountain peaks on the east and low foothills on the west and north. Five miles from Manti; stage or private conveyance. Grounds are private, but rental would not exceed \$1.50 per week. Rabbits, sage hens and prairie chickens abound. Nearest postoffice and supply point, Sterling, one-half mile.

RICHFIELD

(780 Miles from Denver. Elevation, 5308 Feet.)

On the Marysvale Branch of the Denver & Rio Grande R. R. from Thistle.

Camp grounds at Fish Lake, thirty miles distant. Teams to be secured at Richfield or Salina, which are nearest post-offices and supply points. Good fishing and scenery.

ELSNORE

(788 Miles from Denver. Elevation, 5335 Feet.)

On the Marysvale Branch of the Denver & Rio Grande R. R. from Thistle.

Good camping grounds in Monroe Canon, two miles distant. Fine fishing. Magnificent scenery. Large plunge baths. Waters noted for their medicinal quality. Reached by stage from Elsinore, four miles distant. Supply point, Monroe.

MARYSVALE

(808 Miles from Denver. Elevation, 5839 Feet.)

On the Marysvale Branch of the Denver & Rio Grande R. R. from Thistle.

Splendid camping grounds along the Sevier River and adjacent canons, on Government land. High mountains rise on both sides, and mountain streams teeming with trout pour into the Sevier River at frequent intervals. Country is well timbered. Marysvale supports several good stores and hotels. Panguitch, at a distance of sixty-five miles, south of Marysvale, furnishes good fishing, and is situated in a canon with good camping grounds all around on public land. Panguitch nearest postoffice and supply point, fourteen miles from lake. Several good stores and hotels. Some of the best fishing in the state is no doubt found there, as much as 600 pounds of trout having often been shipped at one time. Good hunting in the surrounding country, close to station—bear, deer, mountain lions, rabbits, grouse and a few quail.

CASTILLA SPRINGS

(680 Miles from Denver. Elevation, 4912 Feet.)

These hot springs are fast becoming famous for their medicinal qualities. Good camp grounds in the vicinity, well appointed hotel, and excellent fishing. Supplies obtainable at Springville and Castilla.

SPRINGVILLE

(691 Miles from Denver. Elevation, 4555 Feet.)

Good camping grounds at Kelley's, nine miles distant. Grounds private, but free. Some parties take their own tents, and others board at Kelley's. Good trout fishing in Hobble Creek, close by grounds. Timber land, mountain scenery. Nearest postoffice and supply point, Springville.

SPANISH FORK.

(695 Miles from Denver. Elevation, 4558 Feet.)

On the Tintic Branch of the Denver & Rio Grande from Springville.

A number of good camping grounds along the shores of Utah Lake, three to six miles from the station; good fishing in the lake, and many wild ducks in the open season. Supplies and livery to be secured at Spanish Fork, which is also nearest postoffice.

PAYSON

(702 Miles from Denver. Elevation, 4610 Feet.)

On the Tintic Branch of the Denver & Rio Grande from Springville.

The shores of Utah Lake, ten miles distant, afford many delightful camp grounds. Good fishing, and duck shooting in open season. Postoffice, livery and supplies at Payson.



Provo Cañon, Utah

PROVO

(696 Miles from Denver. Elevation, 4512 Feet.)

Excellent private camping grounds can be had at Upper Falls resort and at Forks, located on the Provo Canon Branch of the Denver & Rio Grande, eleven and twelve miles respectively from Provo, which is the nearest postoffice. Good tents are furnished at a rental of from \$1.50 to \$2.50 per week. These grounds are on Provo River, in the heart of the canon, where fine fishing for mountain trout and black bass can be had. Chicken hunting is also a feature of the canon.

CHARLESTON

(718 Miles from Denver. Elevation, 5430 Feet.)

On the Provo Canon Branch of the Denver & Rio Grande R. R. from Provo.

Good camping grounds on private lands at nominal rental, along the Provo River. Good fishing in streams, shady camp grounds and delightful scenery and climate. Post-office, livery and supplies at Charleston. Strawberry Valley, described under Heber, is also accessible from Charleston.

HEBER

(722 Miles from Denver. Elevation, 5559 Feet.)

On the Provo Canon Branch of the Denver & Rio Grande R. R. from Provo.

There are numerous places in Provo Canon which offer tempting invitations to parties desiring to camp out, chief among these being Spring Dell and Upper Falls, at both of which places hotel accommodations may be secured. There are also tents for rent to parties who wish to avail themselves of the same, a nominal rate being charged. There is excellent trout fishing in the stream which runs through the canon, and grouse and small game upon the hills. In the immediate vicinity of Heber are the Hot Pots at Midway, about three miles from the Heber depot. About one mile beyond the Hot Pots is Hoover's Grove, which is quite popular as a camping ground. But by far the most popular camping place is Strawberry Valley, about twenty-five miles distant, and easily reached by wagon. Here all kinds of game, both large and small, and the finest specimens of brook trout, are to be found in abundance. There are several hotels, at which excellent accommodations may be had. A good livery stable, fully equipped, is ready at all times to supply the needs of campers at a moderate charge.

GENEVA

(705 Miles from Denver. Elevation, 4502 Feet.)

Resort located on the shores of Utah Lake, which is twenty miles in length and twelve miles wide, in the heart of Utah Valley, at the foot of the Wasatch Mountains. Hotel accommodations. Good camping grounds at small rental. Fine bass and trout fishing. Lake boating.

AMERICAN FORK

(709 Miles from Denver. Elevation, 4563 Feet.)

Good camping grounds on shore of Utah Lake, one and one-half miles from station, also in American Fork Canon, seven to twenty miles. Both reached by private conveyance. Free private camping grounds at lake. Public grounds in canon. Grouse and pine hens in canons. Catfish, bass, trout and suckers in Utah Lake. Artesian water on lake shore. American Fork Canon, celebrated for its varied and beautiful scenery. Fine springs and clear cold running water in canon. American Fork Lake resort one and one-half miles from station. Open during summer season. Above point also reached from Lehi.

MIDVALE

(730 Miles from Denver. Elevation, 4365 Feet.)

Private camping grounds and summer resort at Wasatch, eleven miles east of Midvale, in Little Cottonwood Canon,

Wasatch Range of mountains. Reached by team from Midvale, or by team to Sandy and by horsecar from Sandy to Wasatch. Number of good cottages, rent \$2 to \$5 per week. Fine trout fishing.

MURRAY

(734 Miles from Denver. Elevation, 4310 Feet.)

Nearest camping ground is six miles from station in Big Cottonwood Canon, reached by stage every day during season. Grounds public; some private grounds cost \$1 per week for camping privilege. About twelve miles from mouth of canon is Brighton, a summer resort, with cottages and tents to rent. Has hotel and store during season, and is a very desirable place to camp. Trout fishing very good in Big Cottonwood Creek. Postoffice and supply point, Brighton.



Lake Blanche, Cottonwood Cañon, Utah

SALT LAKE CITY

(741 Miles from Denver. Elevation, 4225 Feet.)

"Camping out" is a favorite summer diversion of residents of and visitors to Salt Lake City. There are so many ideal camping-out places, distant from 12 to 100 miles, that it is hard to particularize. It might be said with accuracy that camping is found highly enjoyable all about the "City of the Saints." The City Creek Canon, which is reached in a few minutes' walk from Temple Square, gradually widens out as it reaches the summit of the hills many miles away, affording innumerable camping grounds amid the shade of the cottonwood and other trees and shrubs that line the banks of the little stream. Emigration Canon, reached by electric cars from Main Street direct to the summit of the Wasatch Range, from which point a magni-

ificent panoramic view of mountain ranges and valleys for a hundred miles in all directions is obtainable. Eight miles distant from the heart of the city, begins the favorite canon known as "Parley's," through which winds a branch line of the Rio Grande road, always keeping company with the little mountain stream that dashes over the precipice to the power house and reservoirs below. In this canon are several popular resorts, the principal of which are Pharaoh's Glen, Mountair and Felt's Resort, all of which offer particular advantage to campers, having supplies always on hand. The railroad affords additional attractions in that you can board a train and reach Salt Lake City or the opposite terminus, Park City, in an hour's time. Those who prefer not to bring their own camping outfits may rent tents or cabins, with or without board, at from \$8 to \$15 a week. Parley's Canon presents a succession of shady places suitable for camping along its entire length, with the novelty of good trout fishing and hunting, as well as mountain climbing, in the immediate vicinity. No place in Utah is more attractive nor the environment more beautiful than Parley's Canon. The Little and Big Cottonwood Canons, reached by team from the city, lead through countless groves of cottonwood trees to "Brighton's," or the "Summit." In the vicinity of Brighton, twenty-five miles from Salt Lake City, and along the shores of Lake Mary, Lake Blanche or Silver Lake, Nature has fashioned the contour of the country as if with special aptitude to the wants of campers. Here are fishing, boating, hunting and mountain climbing at an altitude of 7,000 to 9,000 feet, where the days are always bright and warm and the nights so cool that blankets and comforts are brought into requisition. Salt Lake City is the natural outfitting point for most of the trips mentioned in Utah, and as all tourists would naturally want to see the attractions of this quaint and picturesque city of the Mormons, it is well to purchase your ticket to that point and make your diverging trip therefrom.

OGDEN

(778 Miles from Denver. Elevation, 4293 Feet.)

Many good camping grounds in this locality. Good timber and plenty of fishing. Easy of access, reached by team. Almost all of them are public. Among the most accessible are Wilson's Grove, eight and one-half miles from depot; and The Hermitage, six and one-half miles, reached by fine road and by electric line. Ample grounds for camping along Ogden River, where there is fine trout fishing. Rustic hotels in both groves. Malan's Heights, eight miles from depot and 4,000 feet above the city, is reached by private hack. Hotel is located in a fine grove. Plenty of shade and splendid water. Fine scenery, mountains of Nevada being plainly seen, as well as Garfield and Saltair Beaches. Fine chicken shooting and best of trout fishing. Plenty of timber for camping ground on different forks of the Ogden River. Hot Springs Hotel, at Hot Springs, Utah, twelve miles from Ogden, on Ogden & Hot Springs Railway, is a first-class resort. Hot Springs Sanitarium at mouth of Ogden Canon, reached by electric lines.



Vacation Estimates

It is not to be expected that all tourists will care to spend their entire outing in camp, and for the purpose therefore of giving the vacation-seeker some idea as to the cost of various sight-seeing tours a few "Estimates" have been carefully prepared, showing approximately the railroad fares, hotel bills and incidental expenses.

The estimates shown herein under "No. 1" include room and board at the higher-priced hotels, also somewhat more expensive carriage drives, i. e., for more elaborate turnouts, smaller parties, or greater distances. Under "No. 2" the estimates are based on prices at less expensive hotels where satisfactory accommodations can be secured. It should be understood that all figures excepting railroad fares are approximate, although in no case will the cost vary greatly from the amount shown.

The railroad fares given are special rates in effect daily throughout the season, May 15th to October 31st. It should be remembered, however, that at frequent intervals still lower rates are made on account of conventions, excursions, etc., of which you can take advantage and thus materially reduce your expenses. Some of the special dates which have already been arranged are shown on page 48 of this publication.

Trips to Mountain Resorts

For Health and Pleasure Seekers

In the following estimates seven days is the length of time figured at each hotel, as it is presumed that those who are simply in search of rest or health will wish to spend at least that period at one resort. If, however, a shorter or longer stay is anticipated, it will be an easy matter to reduce or increase the estimate accordingly. Very often, of course, considerable reduction in the hotel rate can be secured for a longer period.

PALMER LAKE AND GLEN PARK.

Palmer Lake is 52 miles from Denver on the exact summit of the Divide, (altitude 7,237 feet). It is just at the

foot of the mountains, into which most enjoyable excursions may be made riding, driving or on foot. Glen Park, where Colorado's Chautauqua is held every summer, adjoins Palmer Lake on the south. There are also excellent golf links in the vicinity. En route from Denver, Larkspur is passed, from which point a delightful drive can be made to Perry Park.

ESTIMATES.

	No. 1	No. 2
One Ticket, Denver to Palmer Lake and re-		
turn, good ten days.....	\$ 2.80	\$ 2.80
Hotel, seven days	12.00	7.00
Carriage drive	2.00
Total	\$16.80	\$ 9.80
Round trip rate from Colorado Springs, \$1.30; from Pueblo, \$3.70.		

PINE CREST

Pine Crest is a delightful resort adjoining Palmer Lake on the south, recently established for the benefit of those who desire to purchase or rent cottages, of which thirty have been built, with modern conveniences. A boarding-house will provide meals for those who do not care to do their own cooking. Dancing pavilion, modern steam-heated swimming pool, golf links, tennis courts, etc.

ESTIMATES.

	No. 1	No. 2
One Ticket, Denver to Palmer Lake and re-		
turn, good ten days	\$ 2.80	\$ 2.80
Hotel, seven days	12.00	10.00
Carriage Drive	2.00
Total	\$16.80	\$12.80
Round trip rate from Colorado Springs, \$1.30; from Pueblo, \$3.70.		

COLORADO SPRINGS AND MANITOU—PIKE'S PEAK REGION.

These popular resorts are so close to each other, both as to distance and interest, that we include them under the same heading. Colorado Springs is 75 miles from Denver, while Manitou is 5 miles farther west at the foot of Pike's Peak. The two points are connected by a branch of the Denver & Rio Grande Railroad and by an electric street-car line. Among the many sight places in the vicinity are the Garden of the Gods, Glen Eyrie, Williams Canon, Cave of the Winds, Monument Park, Pikes Peak Trail and Summit, Ute Pass and Rainbow Falls, Manitou, Grand Caverns, Cheyenne Canon and Seven Falls, while the iron and soda springs at Manitou constantly afford refreshment for the tourist. Lovers of golf will find first-class links at Colorado Springs. The trip from Manitou to the summit of Pikes Peak over the famous cog road can be made at a cost of \$5.

ESTIMATES.

	No. 1	No. 2
One Ticket, Denver to Colorado Springs and		
return, good ten days (Manitou 20c		
higher)	\$ 4.05	\$ 4.05
Hotel, seven days	21.00	14.00
Carriage Drives	4.00	2.00
Total	\$29.05	\$20.05
Rate from Pueblo to Colorado Springs, \$2.45; (Manitou 20c higher.)		

CANON CITY AND THE ROYAL GORGE.

The Royal Gorge—the Grand Canon of the Arkansas, 165 miles from Denver—is the most remarkable chasm in the world through which a railroad passes. Like Niagara Falls, the Yellowstone National Park and the Natural Bridges of Utah, the Royal Gorge is one of Nature's masterpieces, and its grandeur has been heralded in all parts of the world. A few minutes' ride beyond the peaceful town of Canon City, the train enters the portals of the Grand Canon of the Arkansas, whose walls narrow rapidly until at the Hanging Bridge they are only thirty feet apart and rise perpendicularly for over half a mile. Words cannot depict the grandeur of this eight-mile ride through the Canon of the Arkansas. When first examined it seemed impossible that a railroad could be constructed through this stupendous canon. There was scarcely room for the river alone, and granite ledges blocked the path with their mighty bulk. But the energy of man in time conquered, the obstructions were blasted away and the roadbed, closely following the contour of the cliffs, was made, and today the canon is a thoroughfare and a world-wide wonder for thousands of transcontinental travelers. The top of the Gorge (2,627 feet straight above the track and river bed) can easily be reached by wagon or auto from Canon City by way of the famous Sky Line Drive. En route from Denver you pass Palmer Lake at the summit of the Divide, Colorado Springs and Manitou at the foot of Pikes Peak, with their many attractions, and Pueblo with its great smelters and steel works. Stop-overs are allowed at Canon City within transit limit on all Colorado tourist, Utah and Pacific Coast tickets.

ESTIMATES.

	No. 1	No. 2
One Ticket, Denver to Parkdale (Royal Gorge) and return good 30 days	\$ 9.60	\$ 9.60
Hotel at Canon City, seven days.....	18.00	10.50
Total	\$27.60	\$20.10
Round trip rate from Colorado Springs, \$6.70; Saturday or Sunday to Monday, \$4.20. From Pueblo, \$4.45; Sunday only, \$1.50; Saturday or Sunday to Monday, \$2.45.		

BUENA VISTA HOT SPRINGS.

This resort is located 245 miles from Denver, near the Collegiate Peaks, Mounts Princeton, Yale and Harvard. The springs are in the romantic Cottonwood Canon and have a temperature of from 120 to 140 degrees F. The water possesses great curative properties, and ample bathing facilities are afforded. Within easy access is Cottonwood Lake, well stocked with mountain trout, forming a great attraction for the angling vacation-seeker. These hot springs are located five miles from the town of Buena Vista. En route from Denver you will pass Palmer Lake, Colorado Springs and Manitou, Pikes Peak, Pueblo, Royal Gorge in the Grand Canon of the Arkansas, Brown's Canon and the Collegiate Peaks. The trip may be varied, either going or returning, by stopping off at Salida and making the one-day trip to Marshall Pass and return.

ESTIMATES.

	No. 1	No. 2
One Ticket, Denver, Colorado Springs, Manitou or Pueblo to Buena Vista and return, good 30 days, allowing stopovers.....	\$ 9.60	\$ 9.60
Hotel, seven days	10.00	10.00
Carriage Drives	3.00	2.00
Bathing	2.00	2.00
Total	\$24.60	\$23.60

LEADVILLE.

Leadville, the highest city in the world (altitude, 10,200 feet), is 275 miles from Denver, in the center of the great gold and silver mining district which became famous in the late seventies. On account of its lofty position and the famous mines which are so easily accessible, the city is of extraordinary interest to the tourist, and for the sportsman it is a most convenient outfitting point for the fishing grounds along the Eagle River and at Twin Lakes, both of which localities are well stocked with mountain trout. On the way from Denver to Leadville the following points of interest will be passed, and you are at liberty to use your pleasure as to stopovers: Palmer Lake and the Glen Park Chautauqua, Colorado Springs, with Manitou and Pikes Peak nearby, the cities of Pueblo, Florence and Canon City, the famous Royal Gorge in the Grand Canon the Arkansas, Salida (from which point a one-day side trip may be made up Marshall Pass, if desired), Brown's Canon and the Collegiate Peaks.

ESTIMATES.

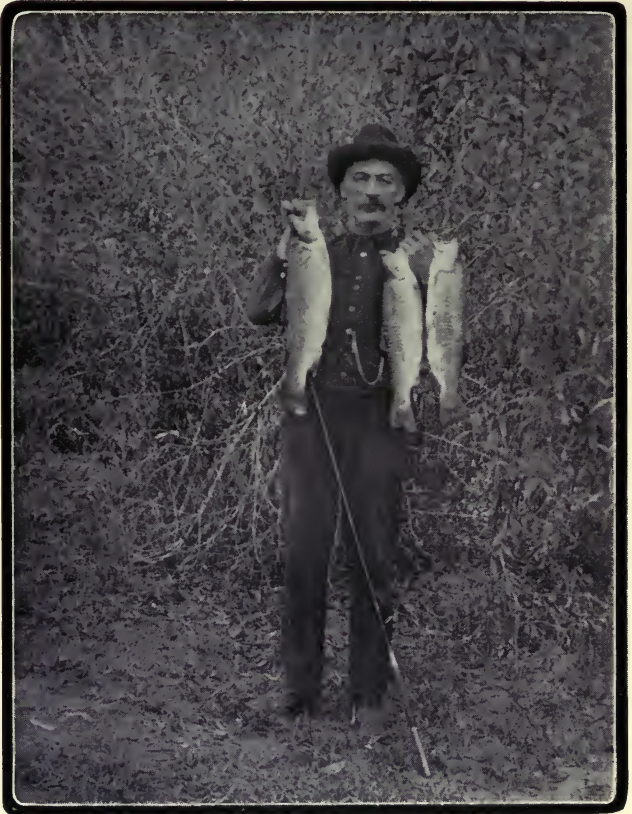
	No. 1	No. 2
One Ticket, Denver, Colorado Springs or Pueblo to Leadville and return, good 30 days, allowing stop-overs	\$12.80	\$12.80
Hotel, seven days	21.00	7.00
Carriage Drive	4.00	2.00
Total	\$37.80	\$21.80

GLENWOOD SPRINGS.

As a health and pleasure resort, Glenwood Springs is almost unrivalled. It is a beautiful spot located 360 miles from Denver, and has attained wide fame both for its marvelous hot springs and for its magnificent Hotel Colorado. The spacious bathhouse and vapor caves afford ample facilities for the treatment of the afflicted, while the great open-air bathing pool is a source of delight to every one during both summer and winter. Glenwood Springs is most picturesquely located and beautiful drives may be taken into the Grand River Canon and to various other mountain sight places. This is the point from which ex-President Roosevelt made his vacation trips into the big game country. The angler will find Glenwood Springs most conveniently located for fishing trips to the streams in the vicinity, where excellent trout fishing will always be found in season. The golfer will find first-class links at Glenwood.

Hanging Lake, near the Grand River Canon, ten miles east of this resort, is one of Nature's wonders recently discovered. It lies high up in an overhanging basin formed ages ago by a gradual deposit of lime from the mountain stream. Luxuriant pines, ferns and moss combine with the lake and falls to form one of the most beautiful spots in the Rockies.

En route from Denver to Glenwood Springs the traveler passes Palmer Lake at the Summit of the Divide, Colorado Springs and Manitou at the foot of Pikes Peak, with their many surrounding attractions, Pueblo with its great smelters and steel works, Canon City with the State Penitentiary, Royal Gorge and the Grand Canon of the Arkansas, Leadville, the highest city in the world, Tennessee Pass and the canons of the Eagle and Grand rivers.



Seventeen Pounds of Trout Caught in One Hours Time, near Cimarron, Black Cañon

ESTIMATES.

	No. 1	No. 2
One Ticket, Denver, Colorado Springs, Manitou or Pueblo to Glenwood Springs and return, good 60 days, allowing stop-overs.	\$15.00	\$15.00
Hotel, seven days	28.00	14.00
Carriage Drives	4.00	2.00
Bathing	3.00	3.00
Total	\$50.00	\$34.00
Week end tickets, good 10 days, on sale Fridays and Saturdays, \$10.00.		

GUNNISON.

Gunnison, situated 288 miles from Denver, is a most desirable resort point and is particularly attractive to the fisherman. It is located on the Gunnison River, famous for the great trout catches made every season by the devotees of the rod and line. Excellent hotel accommodations are afforded for those who desire to remain in town and take occasional fishing and pleasure trips into the surrounding country, while the sportsman who wishes to follow his pastime more strenuously can obtain suitable camping outfit in Gunnison at a reasonable price. The well known fishing points of Almont, Parlin, Cebolla, Hierro, Iola, Kezar, Sapinero and Cimarron are all in this vicinity and may be easily reached.



A Good Day's Sport

On the way to Gunnison you will pass the following points of interest: Palmer Lake, Colorado Springs, with Manitou and the Pikes Peak region close by, Pueblo, Florence, Canon City, Royal Gorge and the Grand Canon of the Arkansas, Salida and the famous Marshall Pass.

ESTIMATES.

	No. 1	No. 2
One Ticket, Denver, Colorado Springs or Pueblo to Gunnison and return, good 30 days, allowing stop-overs	\$14.30	\$14.30
Pullman and Parlor Car Accommodations, round trip	4.50	4.50
Hotel, seven days	15.00	10.00
Carriage Drives	4.00	2.00
Total	\$37.80	\$30.80

OURAY.

Set in a great amphitheater, from which there are but two outlets, is Ouray, the famous resort of southwestern Colorado. It is situated 387 miles from Denver on the narrow gauge line, being reached via the Marshall Pass route. For picturesque location Ouray surpasses all other towns in the Rocky Mountains, while its hot springs have gained fame for their remarkable curative properties.

Among the carriage drives the visitor should not fail to take the trip over the famous Circle Route Stage Line from Ouray to Red Mountain, which comprises twelve miles of the

grandest mountain scenery in the world. Box Canon is also one of Ouray's attractions and is within easy walking distance of the hotel.

On the way to Ouray the traveler passes some of the most magnificent scenic wonders of all those afforded by the Denver & Rio Grande Railroad, including Pikes Peak, Royal Gorge in the Grand Canon of the Arkansas, the far-famed Marshall Pass, the Black Canon of the Gunnison and the remarkable Curecanti Needle, besides traversing the great fruit districts near Canon City and Montrose and in the Uncompahgre Valley.

ESTIMATES.

	No. 1	No. 2
One ticket, Denver, Colorado Springs or Pueblo to Ouray and return, good 30 days, allowing stop-overs	\$23.70	\$23.70
Pullman and Parlor Car Accommodations, round trip	5.00	5.50
Hotel, seven days	21.00	9.00
Stage and Carriage Drives	6.00	4.00
Total	\$56.20	\$42.20

WAGON WHEEL GAP.

Wagon Wheel Gap is located 312 miles from Denver on the Rio Grande, the best trout stream in Southern Colorado.



A Camp at Wagon Wheel Gap

It is attractively situated and has become a favorite health and pleasure resort, possessing excellent mineral hot springs, which are noted for their curative properties. The recently established Wheeler National Monument Park, with its wonderful sandstone formations, is easily reached from Wagon Wheel Gap, being twelve miles distant. In addition to the carriage drives in the immediate vicinity, various side trips on the railroad may be made to Del Norte, Monte Vista, Creede and other adjacent points. The Hot Springs Hotel is well appointed and conducted, while the spacious bath house is provided with every variety of baths, including two

large swimming reservoirs. Wagon Wheel Gap is visited annually by many expert anglers from the East, who have always found the waters of the Rio Grande abundantly supplied with the gamey mountain trout.

En route to Wagon Wheel Gap the following points of interest are passed, at which stop-overs may be made if desired: Palmer Lake, Colorado Springs, and Manitou; Pikes Peak, Pueblo, La Veta Pass, Spanish Peaks, Sierra Blanca and Alamosa, the metropolis of the great San Luis Valley.

ESTIMATES.

	No. 1	No. 2
One Ticket, Denver to Wagon Wheel Gap and return, good 30 days, allowing stop-overs.	\$19.00	\$19.00
Pullman Accommodations, Denver to Alamosa and return	4.00	4.00
Hotel, seven days	16.00	16.00
Carriage drives	4.00	2.00
Bathing	2.00	2.00
Total	\$45.00	\$43.00
Round trip rate from Colorado Springs, \$15.75; Pueblo \$13.75.		
Week end tickets, good 10 days, on sale Fridays and Saturdays: From Denver, \$12.70; Colorado Springs, \$10.45; Pueblo, \$9.15.		

PAGOSA SPRINGS.

Pagosa Springs is in southwestern Colorado, 421 miles from Denver. Its elevation is 7,108 feet. The town is provided with good hotel accommodations and bath houses. The waters carry a very high degree of natural heat and have some remarkable cures to their credit. The beautiful San Juan River, abounding with trout, runs through the village, making it an ideal resort for the fisherman.

En route from Denver to Pagosa Springs the tourist passes Palmer Lake, at the summit of the Divide, Colorado Springs and Pikes Peak, with Manitou and the numerous other attractions adjacent thereto, Pueblo, "the Pittsburgh of the West," La Veta Pass (9392 feet), the great San Luis Valley, the magnificent Toltec Gorge, and the Jicarilla Indian Reservation, just over the boundary line in New Mexico.

ESTIMATES.

	No. 1	No. 2
One Ticket, Denver, Colorado Springs or Pueblo to Pagosa Springs and return, good 30 days, allowing stop-overs	\$25.00	\$25.00
Hotel, seven days	12.00	8.00
Hot Springs Baths	2.00	2.00
Total	\$39.00	\$35.00

SALT LAKE CITY.

The capital of Utah is one of the most remarkable cities in the world, partly on account of its location on the margin of the Great Salt Lake, and partly because of its association with the religious sect of Brigham Young, whose Temple and Tabernacle form one of the sights of the city. There are many other points of interest, and whoever decides upon Salt Lake City for the spending of his vacation need have no fear of regretting his choice.

En route from Denver he will pass Pikes Peak, Royal Gorge, Grand Canon of the Arkansas, and, arriving at Salida,

will have the choice of the Denver & Rio Grande's two routes through the mountains—one via Marshall Pass and the Black Canon of the Gunnison, and the other via Leadville, Tennessee Pass, Eagle River Canon, Grand River Canon and Glenwood Springs. Of course one of these lines should be taken going and the other returning.

ESTIMATES.

	No. 1	No. 2
One ticket, Denver, Colorado Springs or Pueblo to Salt Lake City and return, good to October 31, allowing stop-overs.....	\$27.50	\$27.50
Pullman and Parlor Car Accommodations, Denver to Salt Lake City and return.....	8.00	8.00
Hotel, seven days	21.00	14.00
Carriage Drives	4.00	2.00
Street Car Fare	2.00	1.00
Trip to Saltair Beach and Bathing.....	1.00	1.00
Total	\$63.50	\$53.50

Famous Scenic Trips

For Sight-Seers

The following estimates are arranged for those vacation seekers who do not desire simply to go to one point and remain, but who wish to cover the ground in a sight-seeing way, with occasional short stops at points en route. The estimated time at destination is therefore made as short as possible. The new open top observation cars operated on daylight trains through the Royal Gorge, Grand Canon of the Arkansas, Canon of the Grand River and Black Canon of the Gunnison furnish ample opportunity for viewing the magnificent scenery. Dining cars (service a la carte) are run on all through standard gauge trains.

DENVER TO GRAND JUNCTION AND RETURN.

On this popular trip you pass the following points: Palmer Lake, Colorado Springs, Manitou and Pikes Peak, with their very many attractions, Pueblo, where may be seen the great smelting and steel works, Florence, the oil center of Colorado, Canon City, the seat of the Colorado State Penitentiary, Royal Gorge in the Grand Canon of the Arkansas, Marshall Pass (altitude 10,846 feet), Curecanti Needle, in the famous Black Canon of the Gunnison, and the great fruit districts of Montrose, Delta and Grand Junction. At Grand Junction close connection is made for the return trip via the standard gauge line through Glenwood Springs, where at least one day's stop-over should be made. On leaving Glenwood Springs the route is through the Canon of the Grand River, Eagle River Canon, and over Tennessee Pass, returning at Salida to the line on which the going trip was made and thus affording another opportunity to view the wonderful Royal Gorge on the return to Denver.

This trip is planned to leave Denver on the evening train. Should one desire to leave on the morning train and lay over night at Salida, this could be done at approximately the same expense by eliminating the Pullman charge.

ESTIMATES.

	No. 1	No. 2
One Ticket, Denver, Colorado Springs, Manitou or Pueblo to Grand Junction and return, good 30 days, allowing stop-overs..	\$21.00	\$21.00
Pullman and Parlor Car Accommodations, Denver to Grand Junction	2.50	2.50
Parlor Observation Car, Glenwood to Denver	1.00	1.00
Meals en route, going and returning.....	4.00	3.00
Hotel at Glenwood, one day.....	5.00	2.50
Bathing at Glenwood	1.00	.50
Total	\$34.50	\$30.50

DENVER TO SALT LAKE CITY AND RETURN.

Up to Grand Junction this trip is the same as the "Grand Junction" trip preceding, and to that point the foregoing description will suffice. Soon after leaving Grand Junction, Utah is reached. The first locality of special interest is the wonderful Green River country, which has lately come to the front as a great fruit raising section. Leaving the station of Green River the train passes the high Book Cliffs, lying to the north and west. Far to the south may be seen the outlines of the strange rock formations where the Green River approaches the Grand Canon of the Colorado. Following Price River, the train enters the canon of the same name and soon the beautiful Castle Gate bursts into view. A little later the older settled sections of Utah begin to appear and there is much of interest all the way on to Salt Lake City, including the fertile Utah Valley and Utah Lake. In Salt Lake City the visitor should spend at least three days, and a still longer period can be utilized to advantage. The principal points of interest are those in connection with the Mormon Church, being the famous Temple and Tabernacle, the Bee Hive House (formerly the home of Brigham Young's wives), the Lion House, the old School House, Young's grave, etc., etc. Fort Douglas, the United States Military Post, is located near the city. Of course at least one trip should be made to Saltair Beach on the shores of the great salt sea. From Salt Lake City many beautiful excursions can be easily made to Park City, the Hot Pots, Bingham and other points of interest in the vicinity.

ESTIMATES.

	No. 1	No. 2
One ticket, Denver, Colorado Springs, Manitou or Pueblo to Salt Lake City and return, good to October 31, allowing stop-overs	\$27.50	\$27.50
Pullman and Parlor Car Accommodations, Denver to Salt Lake City and return....	8.00	8.00
Meals en route, going and returning.....	6.00	5.00
Hotel at Salt Lake City, one day.....	3.00	2.00
Hotel at Glenwood Springs, one day.....	5.00	2.50
Total	\$49.50	\$45.00

"AROUND THE CIRCLE"

One Thousand Miles Through the Rockies

Years ago this great trip was planned by the Denver & Rio Grande Railroad and became popular at once, until now the name is familiar throughout the country. There are sev-

eral ways of making this journey. The most popular trip is from Denver, Colorado Springs or Pueblo via the Royal Gorge, Salida, Marshall Pass, Black Canon, Montrose, Ridgway, Durango, Toltec Gorge. Alamosa and La Veta Pass. And in this route there are two variations, viz., between Montrose and Durango. If the "all rail" route is desired, the trip is made via the Rio Grande Southern Railroad from Ridgway through Telluride, Rico and Mancos, from which point the Cliff Dwellings are reached. If the traveler wishes to use the stage line, he should take the Denver & Rio Grande from Montrose to Ouray, the Circle Route Stage line to Red Mountain, the Silverton Railroad to Silverton and the Denver & Rio Grande through Las Animas Canon to Durango.

ESTIMATES.

	No. 1	No. 2
One Ticket from Denver, Colorado Springs or Pueblo "Around the Circle," good 60 days, allowing stop-overs	\$28.00	\$28.00
Pullman Accommodations, Denver to Salida and Alamosa to Denver	4.00	4.00
Parlor Car Accommodations, Salida to Montrose and Durango to Alamosa	1.25
Hotel at Telluride or Ouray	3.00	1.50
Hotel at Durango or Silverton	3.00	1.50
Meals en route	3.00	3.00
Total	\$42.25	\$38.00

The "Circle" trip can also be made via Grand Junction and Glenwood, in lieu of Marshall Pass and Black Canon, at an additional charge of \$5.00.

The side trip from Mancos to the Cliff Dwellings, occupying three days, may be made at an additional cost of \$15.00 for one person, or \$12.50 each for two or more, which price includes team, guide, meals and lodging.

The Aztec Ruins near Aztec, N. M., may be visited with a one day side trip from Durango, at a cost of \$2.20 for railroad fare and approximately \$3.00 for livery hire.

DENVER TO SANTA FE.

Santa Fe, the capital of New Mexico and the oldest city in the United States, is 406 miles from Denver and is of great interest to tourists because of its antiquities and its connection with the early history of the country. There is evidence that this locality was inhabited as far back as 1325, which would antedate the Pilgrim Fathers by nearly 300 years. The queer streets, the low adobe houses, the historical buildings and the Mexicans themselves serve to make a stay in the City of Holy Faith, a most interesting and enjoyable day should be utilized for sight-seeing in Santa Fe.

En route from Denver you will pass Palmer Lake, Colorado Springs, Manitou and the Pikes Peak region, Pueblo, Walsenburg and the surrounding coal mining region, La Veta Pass, Spanish Peaks, Sierra Blanca, Alamosa, in the fertile San Luis Valley, the volcanic formations in the northern part of New Mexico, and then the series of picturesque Indian pueblos to be seen at frequent intervals from Embudo to Santa Fe, among them being San Juan with its two churches and gilded statue of the Virgin, Santa Clara and San Ildefonso. From Servilleta, a side trip by stage may be made to the famous Indian pueblo of Taos, twenty-five miles to the east, at a cost of \$10.00 for the round trip. A stop-over at Espanola will afford an opportunity to visit the queer Mexican

town of Santa Cruz, with its ancient church, the Pajarito Park, and the Cliff and Cave Dwellings, all easily reached from that point.

ESTIMATES.

	No. 1	No. 2
One Ticket, Denver to Santa Fe and return, good 30 days, allowing stop-overs.....	\$27.05	\$27.05
Hotel at Espanola, one day	2.00	2.00
Hotel at Santa Fe, one day	3.00	2.00
Carriage Drive, Espanola to near-by points..	1.00	1.00
Carriage Drive, Santa Fe	2.00	1.00
Meals, en route	3.00	3.00
Total	\$38.05	\$36.05

Round trip rate from Colorado Springs, \$23.45; from Pueblo, \$21.05.

Trip from Espanola to Pajarito Park and Cliff Dwellings, including guide, team, meals, etc., \$5.00 per day. Similar arrangements may also be made at Santa Fe.

Special Excursion Rates

In addition to the special rates named in the foregoing estimates, which are in effect daily throughout the season, the following still lower rates will be made on special dates, viz: June 14, 21, 28, July 5, 12, 19, 26, August 2, 9, 16, 23, 30, September 6, 13.

To	From Denver	Colo. Springs	Mani- tou	Pueblo
*Around the Circle	\$20.90	\$20.90	\$21.00	\$20.90
*Around the Circle (via Grand Junction)	25.90	25.90	26.00	25.90
Alamosa	9.65	7.45	7.55	6.10
Almont	9.50	9.50	9.60	9.50
Aspen	10.00	10.00	10.00	10.00
Aztec	21.35	19.15	19.25	17.80
Buena Vista	6.00	6.00	6.00	6.00
†Canon City	6.00	4.05	4.15	2.40
Cimarron (Black Canon)	10.95	10.95	11.05	10.95
†Colorado Springs	2.70	1.65
†Denver	2.70	2.85	4.25
Durango	19.60	17.40	17.50	16.05
Farmington	22.05	19.85	19.95	18.50
†Florence	6.00	3.55	3.65	1.95
Glenwood Springs	10.00	10.00	10.00	10.00
Grand Junction	14.00	14.00	14.00	14.00
Gunnison	8.95	8.95	9.05	8.95
Lake City	12.05	12.05	12.15	12.05
Leadville	8.00	8.00	8.00	8.00
†Manitou	2.85	1.75
Marshall Pass	7.55	7.40	7.50	6.05
Montrose	12.10	12.10	12.20	12.10
Ogden	22.50	22.50	22.50	22.50
Ouray	13.90	13.90	14.00	13.90
Palmer Lake	1.85	.85	.95	2.45
Pagosa Springs	18.10	15.90	16.00	14.55
Parkdale (Royal Gorge)	6.00	4.55	4.65	2.95
†Pueblo	4.25	1.65	1.75
Salida	6.00	6.00	6.00	5.40
Salt Lake City	22.50	22.50	22.50	22.50
Santa Fe	15.80	13.60	13.70	12.25
Silverton	20.90	19.65	19.75	18.30
†Trinidad	8.65	6.00	6.10	4.40
Wagon Wheel Gap	12.65	10.45	10.55	9.10

These tickets will be good for THIRTY DAYS from date of sale, unless otherwise indicated. Liberal stop-over privileges.

*Holders of "Around the Circle," Utah, Montana and Pacific Coast tourist tickets are entitled to side trip tickets on branch lines in Colorado at reduced fares.

†Limit 10 days; stop-overs permitted.

INDEX

CAMPING IN THE ROCKIES

	Page		Page
Almont	30	La Veta	22
Alamosa	23	Leadville	14
American Fork.....	41	Mancos	36
Antonito	25	Manitou	11
Aspen	18	Manti	38
Avon	16	Marysville	39
Aztec	26	Meeker	19
Berry's Ranch.....	16	Midvale	41
Buena Vista.....	14	Minturn	15
Camping Conveniences..	4	Moffat	13
Camping Seasons.....	7	Montrose	33
Camping Sites.....	5	Monument	9
Camping Suggestions....	7	Mt. Pleasant	38
Camping Supplies.....	6	Murray	42
Canon City.....	11	New Castle	19
Carbondale	17	Ogden	43
Castilla Springs.....	39	Ophir	35
Castle Rock.....	8	Osier	26
Cebolla	31	Ouray	33
Cedar Creek.....	33	Out-Door Life	3
Chama	26	Pagosa Springs	26
Charleston	40	Palmer Lake	8
Cimarron	33	Pando	14
Cisco	36	Paonia	34
Colorado City.....	10	Parkdale	12
Colorado Springs	9	Parlin	27
Colton	37	Payson	40
Cotopaxi	12	Pine Crest	9
Creede	24	Placerville	34
Crested Butte.....	31	Price	37
Crestone	13	Provo	40
De Beque	21	Pueblo	11
Delta	33	Red Cliff	15
Dillon	14	Representatives Passen- ger Department	2
Dolores	36	Rico	35
Doyle	27	Richfield	39
Durango	26	Ridgway	33
Eagle	16	Rifle	19
Elsinore	39	Salida	13
Emma	18	Salt Lake City.....	42
Espanola	25	Santa Fe.....	25
Farmington	26	Sapinero	32
Florence	11	Sargent	27
Game Laws of Colorado.	57	Scofield	37
Game Laws of Utah.....	57	Sedalia	8
Garland	23	Shoshone	17
Geneva	41	South Fork.....	24
Glen Park.....	8	Spanish Fork.....	40
Glenwood Springs.....	17	Springville	39
Grand Junction.....	21	Telluride	34
Graneros	21	Texas Creek	12
Green River.....	36	Thistle	38
Gunnison	30	Trinidad	21
Gypsum	17	Trout Lake	35
Heber	41	Tucker	38
Howard	12	Twin Lakes	14
Hotchkiss	34	Vance Junction	34
Iola	31	Villa Grove	18
Jack's Cabin	30	Wagon Wheel Gap.....	23
La Jara	25	Westcliffe	12
Lake City	32	Wolcott	16
Larkspur	8		

VACATION ESTIMATES

	Page		Page
Around the Circle.....	53	Leadville	47
Buena Vista Hot Springs	46	Ouray	49
Canon City, Royal Gorge	46	Palmer Lk. & Glen Park.	44
Colo. Spgs. and Manitou.	45	Pagosa Springs	51
Denver to Gd. Jct. & Ret	52	Pine Crest	45
Denver to St. Lk. & Ret.	53	Salt Lake City.....	51
Denver to Santa Fe.....	54	Special Excursion Rates.	55
Famous Scenic Trips....	52	The Royal Gorge.....	46
Glenwood Springs.....	47	Trips to Mtn. Resorts...	44
Gunnison	49	Wagon Wheel Gap.....	50

CONDENSED GAME LAWS OF COLORADO

Open season for trout (not less than seven inches long), May 25th to November 30th.

Open season for doves, August 20th to September 5th.

Open season for prairie chickens, October 1st to October 20th.

Open season for sage chickens, mountain and willow grouse, September 10th to October 10th.

Open season for one deer with horns, October 1st to October 10th.

Open season for ducks, geese, brants, swans, cranes, and other water fowls, September 10th to April 15th next ensuing.

Open season for curlews, snipes, plovers, and other wading marsh and shore birds, March 1st to April 15th and August 1st to November 30th.

No open season on elk, mountain sheep, antelope, wild turkeys, or quail.

No person permitted to hunt either protected or unprotected game without first procuring a license from County Clerk or State Game Commissioner.

License permits hunting during the open season only. Killing is allowed for food purposes only.

Cost of resident license, \$1.00. Anyone entitled to a resident license does not require a license to fish.

Non-residents and all persons not citizens of the United States must have a non-resident hunting license (cost \$10.00) to hunt, and a fishing license (cost \$2.00) to fish.

LIMIT: Twenty pounds trout in one calendar day; twenty-five pounds in possession at one time. Twenty geese and twenty other birds of the same kind in one calendar day; twenty-five geese and twenty-five ducks and twenty-five other birds in possession at one time.

Shooting from public highway at game prohibited. Coursing game with dogs prohibited. Trapping or obtaining by any other method than gun, or hook and line prohibited; provided, that dogs, sinks, blinds, and decoys may be used in hunting water fowl.

Possession in closed season evidence of transgression. Transportation out of State allowed on permits obtained from the Game Commissioner. Cost of permits, \$1.00 to \$10.00. Boxes containing game or fish must bear label, with contents marked thereon.

PENALTIES: For fishing with explosives or stupefying substances, or killing buffalo, fine \$500.00 to \$1,000.00, or imprisonment in the penitentiary six months to two years, or both. For other violations, fine \$25.00 to \$500.00 or jail imprisonment ten days to six months, or both. Attempted violation punishable the same as actual violation.

FEES AND PROSECUTIONS: For each certificate and permit within the State, \$1.00. All fines collected go one-third each to the person instituting the prosecution, the county and the game fund. All sheriffs and constables in their respective counties and the Commissioner and Wardens throughout the State are required, and United States timber reserve officers are authorized, to enforce the act by arrest, search and seizure, and where animals or vehicles are used to transport game or fish unlawfully killed, may also seize and use such animals and vehicles to transport the game and fish to the place of shipment or safe keeping, and transport prisoners to the place of trial.

CONDENSED GAME LAWS OF UTAH

Open season for trout and bass, June 15th to November 30th, not less than eight inches. Unlawful to sell any game fish. May be taken by angling only. Limit, fifteen pounds per day.

Open season for doves, August 1st to November 30th. Limit, twenty-five per day. Unlawful to sell.

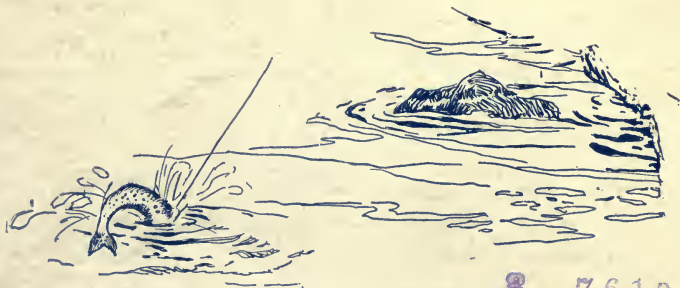
No OPEN SEASON for partridge, pheasant, prairie chicken, sage hen and grouse, except that sage hen can be shot at in Rich, Box Elder, Sevier, Wasatch, Uintah, Carbon, Emery, Garfield, Grand, Beaver, Kane, Millard, Morgan, Piute, San Juan, Summit, Wayne, Washington and San Pete Counties, August 1st to November 30th.

Open season for quail, month of October in Salt Lake, Davis, Weber, Utah, Sevier and Carbon Counties, and in Washington, Garfield and Kane Counties, August 1st to February 1st. Unlawful to sell quail. Limit, fifteen per day.

Open season for ducks, geese, snipe, shore-bird, brant and swan, October 1st to December 31st. May be shot at one-half hour before sunrise to and including one-half hour after sunset. Government standard time. Shotguns larger than ten-gauge prohibited. Sink boxes, sneak boats or floating blinds unlawful. Limit, twenty-five ducks, five geese, brant or swan per day, but not more than twenty-five of all birds mentioned.

Open season for deer, October 15th to November 14th. Resident of Utah only may kill one deer with horns per year.

State license to fish and hunt, male citizen of State, resident, over twelve years of age, \$1.25 per year. All non-resident citizens of the United States, over twelve years of age, \$5.00. Aliens, \$100.00 per year.



8 7610

