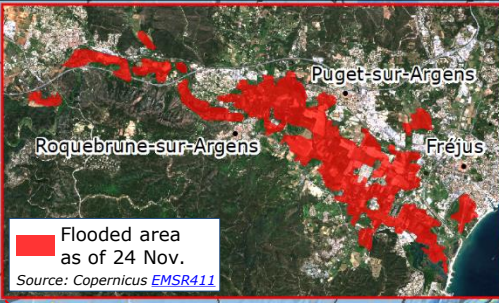
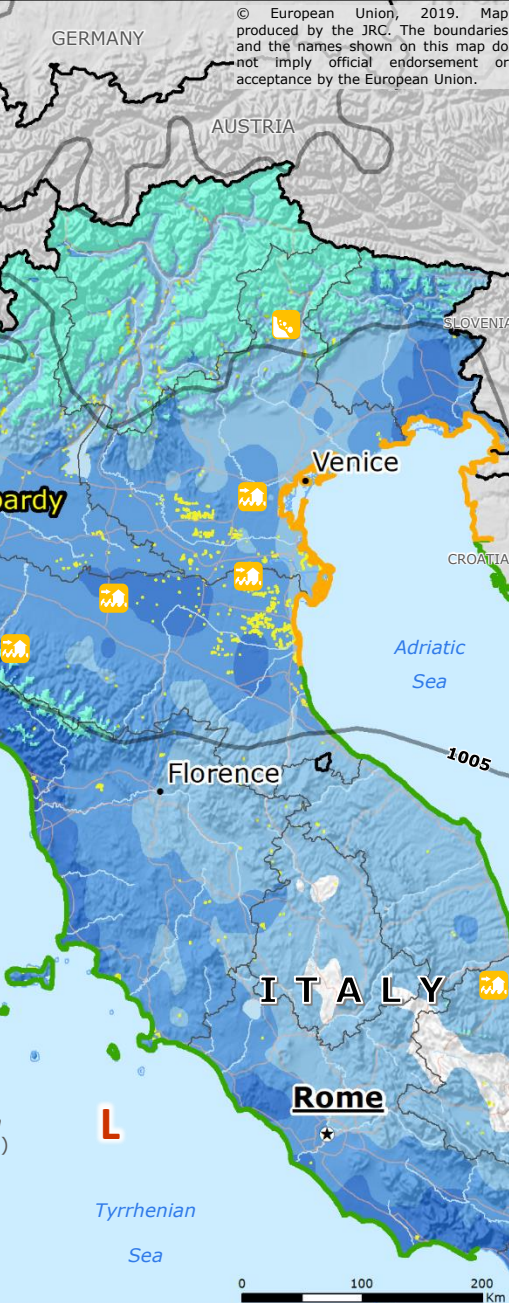


Italy and France | Severe Weather



	Fatalities		Closed roads/highways
	Missing people		Bridge collapsed due to mudslide
	Injured people		Snow avalanche
	Evacuated/isolated people		

Source: DG ECHO Daily Flash as of 25 Nov, French Civil Protection/COGIC.



Past 7-days rainfall accumulation (mm)
Source: NASA-GPM

Storm surge
Source: JRC Calculation, COSMO-AM

Snow coverage on 24 Nov.
Source: NATICE - NOAA

Flooded area as of 24 Nov.
Source: NASA-MODIS

Low Pressure System

Mean Sea Level

Pressure (hPa)
Source: ECMWF as of 24 Nov. at 0:00 UTC

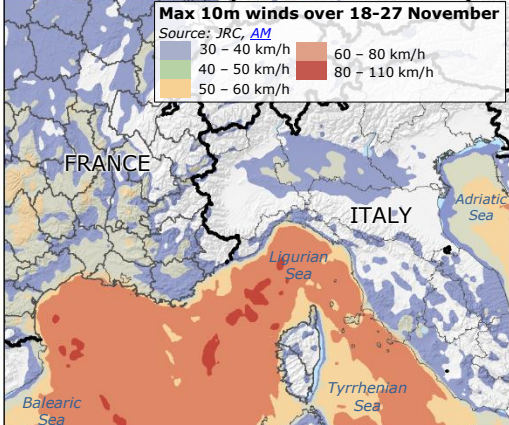
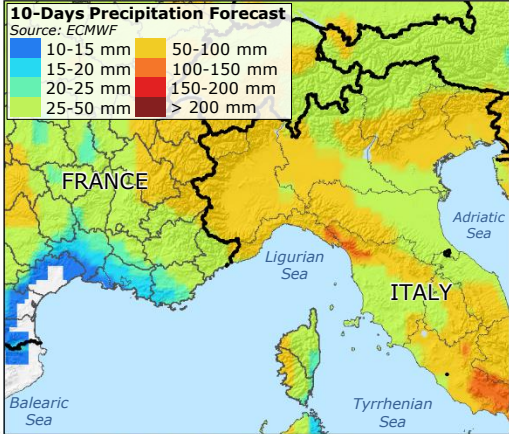
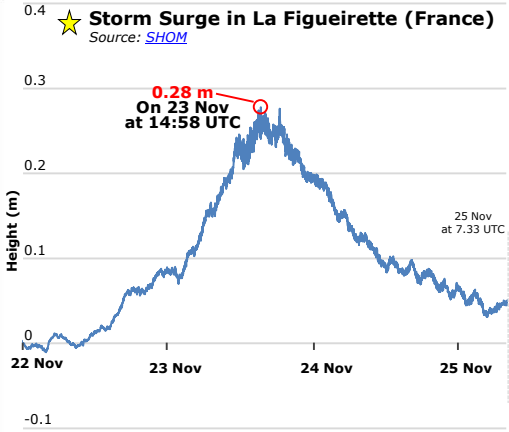
Closed airport

Name Most affected administrative division*

— Administrative division* boundary

Source: Italian Civil Protection, Meteo France

*Regions (Italy), Departments (France)



© European Union, 2019. Map produced by the JRC. The boundaries and the names shown on this map do not imply official endorsement or acceptance by the European Union.

