

Historic, Archive Document

Do not assume content reflects current scientific knowledge, policies, or practices.

62,97

1927

HARDY PLANTS

for the Home Garden



A PATHWAY TO THE GARDEN OF YOUR DREAMS



By W. A. TOOLE
of Garry-nee-Dule
Baraboo, Wisconsin



WM. TOOLE, SR.

AN APPRECIATION

Nearly fifty years ago, William Toole, Sr.—always a lover and grower of flowers—started selling seeds from his garden to those flower loving friends who had heard of its beauty. His great love for Pansies caused him to specialize on this flower, and for many years the garden was known as “Pansy Heights.” Since the broadening of the scope of the business, however, this name has been changed to “Garry-nee-Dule,” an adaptation of the Gaelic for “Garden of the Toole’s.”

Since the beginning, it has been the aim to make these gardens, not merely a commercial organization but an enterprise for the benefit of our mutual flower-loving friends. Because we do exist on a friendship basis we take occasion here to tell our many friends of the passing to the fairer gardens, of the founder of this institution, William Toole, Sr., who died on April 7th, 1926, young at heart though aged and grayed by his eighty-five years of life

The University of Wisconsin honored him with special recognition for his work in the development of new plant varieties and his effort in country community development. While not a writer of books, yet he wrote extensively about flower culture, wild flowers and plants. Some of his articles on wild flowers and plants of Wisconsin have been gathered together and published in book form by the Wisconsin State Horticultural Society. His life was wrapped up in pansies, wild flowers, perennials, fruits, and folks. Although a shy man by nature, undoubtedly his greatest interest was in folks. To have been the organizer and president of the Skillet Creek Farmers’ Club and a useful and companionable neighbor meant more to him than any other honor or wealth which might have come to him

While the active management and labor of the business has been in the hands of his son for many years, his home was at “Cozy Cottage,” where his garden bordered on “Garry-nee-Dule.” Here he spent many happy days among his flowers and neighbors, and was an inspiration to the entire organization at the nursery.

The business William Toole, Sr., founded on flower-friendships has grown beyond its founder’s dreams. There is much we might say if we could say it—pledges of continued friendship and service, which have come down to us as a heritage.

William Toole, Sr., loved wild flowers. He studied them in their homes and knew their likes and dislikes, and he brought them to his garden and domesticated them. At first it was not difficult to find these wildings hereabouts, but civilization is encroaching on many of our old friends of the wild and they are fast disappearing. As a kind of memorial we have established at Garry-nee-Dule a Wild Flower Nursery where these little friends which he loved, may grow in their natural state and from whence they may go forth to you, and others, who loved them long since, but to whom they may have been lost—awhile.

GARDEN GREETINGS FOR 1927



AM WRITING THIS the last day of December, 1926, and as I look out of my window I can see the snow-covered acres of perennials all tucked in for their winter's sleep. The sun is shining brightly today and everything looks hopeful for a wonderful year among the flowers.

During the winter months, if you are in a country blessed with snow and ice, don't you often wonder during the winter how the bugs and diseases and weeds ever caused you so much trouble last summer. Now that you have a breathing spell it seems so easy to plan a system that will beat all these garden bugaboos. Well, here's hoping—

Will some of my unfortunate friends from the south tell me how they get through a satisfactory garden year without this winter time of planning and dreaming?

During the past year we were privileged to meet here at Garry-need-Dule, more flower-loving friends than ever before. Our farm is located on the Federal-State Trunk Highway 12, about two miles southwest of Baraboo. Mrs. Toole and I are always glad to have you stop and see the flowers. There is a succession of interesting things to see from spring to fall, varying with the season.

Baraboo is in the center of a most interesting scenic locality. Nearby is the Devils Lake State Park, and a host of other beauty spots, such as Skillet Falls, Pewit's Nest, Durward's Glen, Parfrey's Gorge, and many others, while only a dozen miles away you will find Mirror Lake, Lake Delton, and the Dells of the Wisconsin.

For many years Baraboo was known as "The Circus City," due to two large circus organizations wintering here. You all know that circus advertising is not conspicuous for its modest claims. The larger circus billed its attraction as "The World's Greatest Show." The smaller one, realizing its limitations, claimed only to be "The Greatest Show in America."

The lordly elephants no longer roam the streets of Baraboo, nor do the lions and other "cats" make the night hideous with their roaring and crying, but we still "point with pride" to the glories that are gone.

I never could acquire the circus superlative in description. I know I cannot claim to be the LARGEST grower of perennials in America, but I aspire to be one of the best. I also hope you

will try my plants and seeds, if you have not already done so. I shall endeavor to so treat you that you will remember Baraboo as a place where GOOD FLOWERS GROW. Should anything arrive in poor condition, let me know at once.

A summer vacation spent near Baraboo will be long remembered with pleasure. You will find good camping grounds as well as numerous summer resorts and courteous, neighborly service.

HOW TO ORDER

May I hope you will read carefully these suggestions on HOW TO ORDER before you send for some of our mutual favorites.

SOME OF THE THINGS YOU CAN DO

Order EARLY; write PLAINLY; give full directions; use the ORDER SHEET, enclosed for your convenience as well as mine.

WHAT I WILL DO

PRICES:—Please note that my prices include careful packing, labeling of varieties, and GUARANTEE OF SAFE DELIVERY. Prices quoted are F. O. B. Baraboo, unless otherwise noted in this list. Small shipments will be made by Parcel Post, postage billed to the customer. Larger orders will be shipped by Express.

Those who wish to pay Parcel Post charges in advance, may include 10 percent extra with their order, and any balance will be refunded.

TERMS

To save expense and extra work during the busy season, I prefer CASH WITH ORDER, but for the convenience of those customers who prefer it, credit can be arranged, if references are furnished.

MY GUARANTEE TO YOU

I GUARANTEE that any plants or seeds I sell will reach you in good growing condition. If they do not arrive in satisfactory condition, or should there be mistakes or shortages in your order, let me know at once and new plants will be sent or your money returned, as you prefer.

I do not guarantee the hardiness or growth of any variety of seeds or plants other than as above, nor will I be liable for a greater sum than the original cost of the plants or seeds.

—W. A. TOOLE.

Garry-nee-Dule, Baraboo, Wisconsin.





Flora Toole Among Her
White Delphiniums

Garry-nee-Dule Novelties and Specialties

DELPHINIUM (Larkspur)

Delphiniums are now one of our leading specialties, being grown by us in large numbers. Our developments in the White Hybrid Delphiniums have created a great deal of interest among lovers of this beautiful flower.

GARRY-NEE-DULE WHITE HYBRIDS. Tall growing white Delphiniums of the same character of growth and height as the beautiful blue hybrids. They are very useful companions of the blue hybrids in many gardens as they give the necessary touch of contrast which brings out all the beautiful colorings in the blue hybrids. Price 50 cents each, \$5 dozen.

"SUMMER CLOUD" WHITE DELPHINIUMS. Summer Cloud White Delphiniums are a selection of the largest flowered ones from among the plants raised from seed. There is some variation in style of growth, but all have large full flowers, the individual flowers being as large or larger than a silver dollar. The flowers are single. Price, Plants: 75c each, 3 for \$2.

"BABY" PLANTS OF "SUMMER CLOUD" DELPHINIUMS are the younger seedlings, from 2¼ in. pots, that will flower the first summer. Some plants may have blue flowers. Plants, Price: 5 for \$1, \$2.00 per dozen.

"FLORA TOOLE" WHITE DELPHINIUM

This is our latest improvement in White Hybrid Delphiniums. This type is later flowering by two weeks than the other white hybrids, the stalks are very strong and heavy so they are not easily broken by the wind and the flowers are of large size with a beautiful silvery sheen. These plants are seedlings from the original plant of "Flora Toole." Many of them are semi-double, though some may have single flowers. Our introductory price for this variety was \$5, we are now selling these strong year old clumps for \$1 each or \$10 per dozen; Baby Plants 25c each, \$2.50 per dozen.

NEW CROP DELPHINIUM SEEDS

Of the famous Garry-nee-Dule Strains. Seeds gathered right here on our grounds.

SUMMER CLOUD. A selection of the largest flowering single type of tall growing White Delphiniums. Packet 50 cents.

FLORA TOOLE—Double, silvery white of rare beauty. Packet \$1.

PYRETHRUM MRS. W. A. TOOLE

Another season's growth continues to bear out our belief in this variety as being a most lovely garden flower. The large single flowers are of an exquisite shade of clear pink with a lovely yellow center and a long stem. Plants, 75c each, 3 for \$2, \$7.50 dozen.

DIANTHUS

ALWOOD CARNATIONS are a result of a cross between the Hardy Garden Pink and the greenhouse Carnation. They lack hardiness here, but I am listing them because they have been found satisfactory further south, and along the seacoast where the climate is less severe. I believe they will be satisfactory further north where the snow fall is heavier, which affords protection. Recommended for their free blooming qualities where weather conditions are favorable. Prices of Dianthus Alwoodii, any variety, 30 cents each, \$3 dozen.

- Mary. Carmine pink, with darker eye.
- Jean. White, purple violet center.
- Joyce. Pink with dark centers.

NEW ENGLAND ASTERS

Among our native Asters none are more lovely than the beautiful Aster Novae Angliae. The type is a rich deep purple, but there is considerable tendency to vary. This was one of the plants my father loved to work with and a few years ago we selected from his seedlings a few varieties that were most distinct and pleasing. Here are the five kinds selected.

NEW ENGLAND ASTERS (Continued)

SPARKLING SPRAY. White tinted with pink. MRS. WM. TOOLE, Sr. Bright red.

BARABOO BEAUTY. White, tinted with rose

MRS. ALFRED RICH. Deep rose.

PURPLE PRIDE. Rich blue purple.

Prices: 50c each, or 1 each of the five for \$2.

PENTSTEMON

GRANDIFLORUM (Shell Leaf Pentstemon). While this is a fairly common native plant in some sections and by no means new to cultivation, it seems to me so attractive that it deserves to be featured. Growing from 2 to 3 feet tall, the long spikes of dainty lavender-blue are unlike anything else in the garden. With us the flowers are at their best in late May and early June. Beautiful and lasting as a cut flower. It likes an open sunny place and seems to do well on clay or lighter soil. Prices: strong plants, 50c each, 3 for \$1, \$3.50 per dozen. Seeds, 50c packet.

REMEMBER WE GUARANTEE SAFE ARRIVAL OF PLANTS from GARRY-NEE-DULE.



Pyrethrum Mrs. W. A. Toole

PHLOX

We grow many thousands of Hardy Phlox plants each year, and every year we try out a number of new kinds to keep up with the best that is offered. I would call your attention to the following varieties listed under "Baby" Phlox, on page 15, which we have found very promising:

FLORA RIEDY. The best tall growing white. I have seen so far.

MIA RUYLS. A very large flowered dwarf white.

DEUTSCHLAND. Flower not so large, but the color is a very bright scarlet.

MILLY VON HOBOKEN. Is a clear mauve with a dark eye.

PHLOX DIVARICATA LAPHAMII. For planting with Darwin Tulips to form a background cover. Many people are using Phlox Divaricata Laphamii with very fine results. For prices see page 15.

VIOLA JERSEY GEM

I do not know how hardy this lovely Viola will be under unfavorable conditions but it will repay its cost with one season's flowering. Sweet scented violet colored flowers are borne on stems that stand up during storms or sunny weather. 35c each; \$3.50 dozen; \$20 per 100.

GIANT SNAPDRAGON

Because of its outstanding merit we are again offering this strain of Giant Flowered Snapdragon. Strong, vigorous plants with very large individual flowers and a beautiful range of colors. The seeds and plants offered below are from selected plants which we gathered ourselves. Strong plants, mixed colors only, 15c each; \$1.50 dozen; \$10 per 100. The Seeds, mixed colors, 50c per packet.

VARIEGATED YUCCA

This form of Yucca Filamentosa or Spanish Bayonet has a central strip of green with an edging of golden yellow. It is as hardy as the clear green type. The effect of this plant is very striking in the garden whether in summer or contrasted against winter snow. Price: Strong one year plants, \$1 each; 3 for \$2.50.



Variegated Yucca

PANSIES

A few years ago we introduced a new type of Pansy known in the variety, **WM. TOOLE, SR.**, described by one writer as "The pure white Pansy with the crinkled edges and the heart of gold." The flower is large for a white Pansy, and it is the daintiest thing in Pansies I have seen. Although most of them come true from seed, some will persist in showing variations mostly of a beautiful lilac shade. **WM. TOOLE, SR.** Plants in bud or bloom, after April 15, \$1 per dozen; \$7.50 per 100. Seeds, 50c per packet of 300 seeds.

For my Garry-nee-Dule Strain, and other Pansy Seeds and Plants, see pages 26 and 27.

OLD ENGLISH MOSS ROSE

The original stock of this rose was brought from Ireland by friends of the family 75 years ago. It is not a hearty grower, but still stands a lot of abuse. Flowers are a beautiful pink, the buds are more freely mossed than any other Moss Rose. \$1 each.

ARTEMESIA

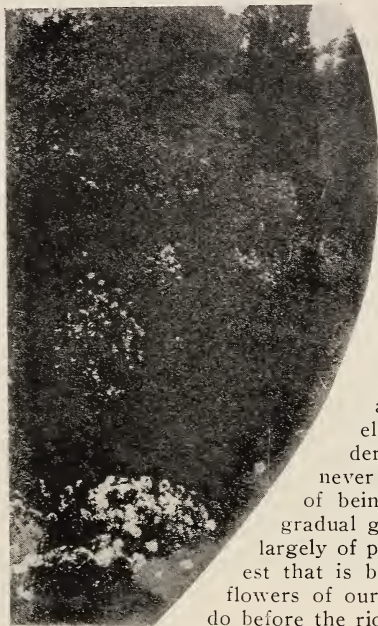
SILVER KING. This variety of Artemisia is valuable for the silvery effect of the foliage and stems in the flower border where the plant reaches a height of about three feet, and for its beauty when the branches are cut and dried and used with fresh flowers in baskets and vases. It is especially attractive when combined with pink roses. I have not tried out this plant for hardiness but the introducer assures me that it is perfectly hardy. Price for strong plants, \$1 each; 3 for \$2.50.

PLANTS FOR THE ROCKERY

With the increasing interest in the Rockery, I am often asked for the most suitable plants for that purpose. The following kinds are all good here under our trying conditions, and will do most anywhere: *Alyssum saxatile compactum*; *Alyssum rostratum*; *Arabis alpina*; *Anemone patens*; *Arenaria*; *Cerastium*; *Campanula carpatia*; *C. persicaefolia*; *C. rotundifolia*; *Dicentra eximia*; *Dianthus caesius*; *D. deltoides*; *Dodecatheon meadia*; *Funkia*; *Gypsophila repens*; *Iris pumila*; *Linum*; *Mertensia*; *Nepeta mussini*; *Phlox subulata*; *P. amoena*; *P. divaricata*; *Platycodon*; *Saponaria ocymoides*; *Sedum*, all varieties; *Veronica incana*; *Tunica saxifraga*; *Viola pedata*. The above varieties are good for the open, sunny Rockery. I shall be glad to answer your inquiries about plants particularly adaptable to other garden uses.



Wm. Toole and His New England Asters



Perennials, the Plants That Made Grandmother's Garden a Joy

I have just been reading that delightful new garden book recently sent out by the Macmillan Co.; "My Garden Comes of Age," by Julia H. Cummins. One of the interesting features to me is the description of the evolution of the flower border from largely annuals to a permanent border of perennials as ownership of the country place was finally realized. No real flower lover can do else than love the beauty of all the many wonderful kinds of Annuals, but Annual flowers can never give that comfortable feeling of permanence, of being "rooted to the soil," that comes with the gradual growth of ones DREAM GARDEN made up largely of perennials. I am much pleased to see the interest that is being shown in the beauty of the spring wild flowers of our northern woods and fields. Coming, as they do before the riot of color of the garden flowers, their dainty, shy freshness is most attractive. While their life is short and some do not even leave foliage for later garden decoration, they fill a vacancy felt in the early garden. The following directions apply as well to our native plants as to the regular garden favorites.

PREPARING THE SOIL FOR PLANTING PERENNIALS

All plants have some certain preferences as to soil, shade and drainage when growing wild, but practically all of them do well in our gardens in almost any soil if they have enough fertility and moisture. So, before you plant your garden, be sure the soil is well prepared and that it has been made rich and fertile. An inch or two of black dirt on top of filled in soil from cellar excavations is not enough. Be sure that plenty of well rotted manure is worked into the soil, or if that is not available, make judicious use of commercial fertilizer.

A FEW POINTS ON WINTERING PERENNIALS

A great many perennials are quite hardy as far as cold is concerned, but do not take kindly to a covering of ice which excludes air during the winter, so when planning and preparing for your garden make provision so that surface water will have a chance to run off. All plants need a little air during the winter, so be careful that your winter protection does not lie too heavily on the plants. Unless very coarse litter is used as a covering material a little brush laid over the plants first before covering with leaves, straw or marsh hay will be found good. Do not cover in the fall till severe freezing starts, perhaps after an inch of crust has formed. Do not take the covering off too early in the spring as it is the alternate freezing and thawing of spring that often causes the damage.

Keep the soil about your plants cultivated as well as you can as this helps greatly in conserving moisture. If a severe dry spell comes, and artificial watering seems needed, do not give the plants a little surface sprinkling every day but soak them thoroughly as far as you go and then stir the surface as soon as dry enough. Mere surface watering during a dry time is worse than not watering at all. I shall be glad to have you write me about any special problems you may have, and will gladly answer your inquiries.—W. A. TOOLE.



Toole's Choice Perennials

GROWN AT GARRY-NEE-DULE

VARIETIES SUITABLE FOR CUT FLOWERS MARKED *

*ACHILLEA (Milfoil or Yarrow)

PTARMICA, fl. pl., Perry's White. This charming white flower is hardy, lasting for years without winter-killing and withstanding drought very well. Very attractive in the border or in the rockery and very useful for cut flowers. Clusters of button-like flowers on a wiry stem. 1 to 2 ft., June to September.

MILLEFOLIUM ROSEUM (Rosy Milfoil). The dense flat heads of old rose flowers are produced on stems about 18 inches long. Flowers last well on plant, gradually fading with age. Trimming of flowers adds to appearance. Thrives in dry situations. Flowers most of the summer.

ALYSSUM

SAXATILE COMPACTUM (Goldentuft). One of the very earliest of spring perennials. Glowing yellow masses of flowers that are effective in the rockery or front border. 9 to 12 inches.

ROSTRATUM. Lighter yellow and later flowering than the preceding. Trailing habit. Good for variety in the rockery, but too low for the perennial border.

ANCHUSA (Bugloss)

ITALICA DROPMORE VAR. Beautiful gentian blue flowers in June, before the Delphiniums arrive. 3 to 5 feet in height. Not long lived but beautiful while they last.

MYOSOTIDIFLORA. Large round leaves and clusters of forget-me-not like flowers. About 1 foot. Not very hardy here. 40c each; \$4 doz.

*ANTHEMIS

INCTORIA KELWAYII (Golden Marguerite). This is a hardy yellow marguerite or daisy that is showy in the border and good for cut flowers, and does well in poor soil. 15-24 inches. Flowers most of the summer if not allowed to seed.

*AQUILEGIA (Columbine)

ALPINA SUPERBA. Short spurred blue flowers. 10-12 in. May and June. Good as rockery or low growing border plant.

LONG SPURRED HYBRIDS. Did you ever see a long tailed Papilio butterfly alight on a slender stemmed flower, setting the whole gently swaying? That is what a plant of Long Spurred Columbines reminds me of when in flower. Many shades and colors and combinations of colors. Often in flower here on Memorial Day. 18-24 inches.

***CHRYSANTHA**. Bright yellow, long spurred flowers. The latest to flower and tallest growing of the Columbines. 30-36 inches. June and scattering flowers all summer.

CANADENSIS. Our native red and yellow Columbine. Is strong growing and beautiful. The plants we send are not collected but are carefully grown in our nursery.

COERULEA (Rocky Mountain Columbine). Long spurred blue and white.

ROSE QUEEN. Varying shades of pink, pink and white, and pink and yellow. Long spurred.

ARABIS (Rock Cross)

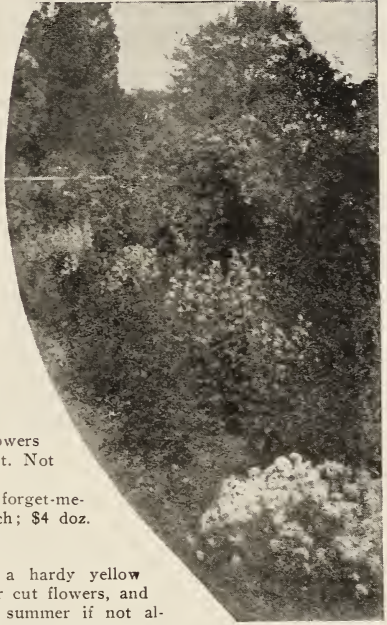
ALPINA. Earliest perennial to flower with us. A mass of pure white, growing about 6 inches high. Good for rockery or edge of border.

The plants came safely and I never had plants arrive before in such splendid condition. Not a leaf was wilted.—MRS. FRANK COUGHRAN, Worthington, Minn.



Aquilegia (Columbine)

PRICES:—UNLESS OTHERWISE NOTED, PRICES FOR PLANTS ON THIS PAGE ARE 25c EACH, \$2.50 dozen, \$15 per 100.





Boltonia Asteroides

NOVAE ANGLIAE (New England Aster). Mixed seedlings in many shades of purple, lavender, red and pink, which are the result of years of selection and experiment by the late Wm. Toole, Sr. 4-6 ft. Flowers in September.

NOVAE BELGII, CLIMAX. A very large flowered, light blue aster. One of the few hardy asters suitable for cutting as well as the border. Small plants are very attractive for decorative effect when potted. 4-5 feet. September. 35c each, \$3.50 dozen.

WHITE CLIMAX. Same as above, but flowers are white. 35c each, \$3.50 dozen.

NOVAE BELGII, ST. EGWIN. Very pleasing rosy pink, growing about 3 ft. high. 35c each, \$3.50 dozen. Also see Novelty List.

ASTILBE

JAPONICA. This is a mixture of named varieties of Japanese Astilbe. Plumy flowers, some white, some pink. Perfectly hardy and do especially well in partial shade. 50c each, \$5 dozen.

BAPTISIA

AUSTRALIS (Wild Indigo). Blue pea-shaped flower, much resembling Lupine. Foliage ornamental all summer. 3-5 feet.

BLEEDING HEART

DICENTRA SPECTABILIS. We have a nice stock of old fashioned Bleeding Heart so dear in every old fashioned garden. Strong roots, 50c each. Young potted plants of Bleeding Heart, will flower first year, 25c each.

EXIMAE (Plumy Bleeding Heart). Very ornamental finely cut foliage. Flowers from May to August. Foliage ornamental all summer. 35c each.

BOCCONIA

CORDATA (Plumepoppy). The large light green leaves give a striking effect where a bold subject is desired. Buff colored panicles of flowers in June and July. 5 to 8 ft. high.

PRICES:—UNLESS OTHERWISE NOTED, PRICES FOR PLANTS ON THIS PAGE ARE 25c EACH, \$2.50 DOZEN, \$15 per \$100.

ARMERIA

MARITIMA. (Thrift). Small heads of rose-pink flowers in June. Tufts of grassy leaves with a slender flower stem. 12-15 inches high. A good plant for the rock garden.

ARENARIA (Sandwort)

MONTANA. Tufts or mats of narrow leaves and star shaped white flowers which appear rather scattering for several weeks. I was rather disgusted with this as a border plant but find it very interesting in the rockery.

ARTEMESIA

***LACTIFLORA** (White Mugwort). Panicles of white flowers, most ornamental when in bud. Good for cut flowers when used in connection with large flowers, such as Dahlias. Also distinct and ornamental in the hardy border. August-September. 3 1-2 to 4 1-2 ft. Not very hardy with us here in the Baraboo region.

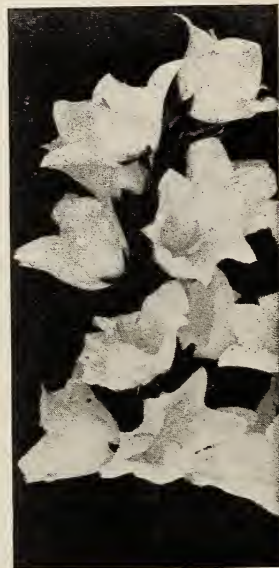
ABROTANUM (Southernwood). Fragrant, finely cut foliage. No old fashioned mixed bouquet was considered complete without a sprig of Southernwood. Flowers inconspicuous. Very hardy.

ASCLEPIAS

TUBEROSA (Butterfly Weed). Gorgeous glowing orange-yellow flowers in July. Especially good for dry, sunny location. Valuable for a hot corner in the rockery. One year tubers, 25c each, 5 for \$1.

ASTER (Michaelmas Daisy)

ACRIS. Forming a dense mass of small, light blue flowers in September. 24 inches high.



Peachbells

BOLTONIA

- ***ASTEROIDES**. This beautiful plant flowers about the same time as wild asters and looks very much like them. In September a mass of it in bloom looks like a snowbank. To keep the Boltonia in good condition clumps should be divided and reset every spring or at least every other year. Color, white, 5-6 feet. Divisions.
- ***LATISQUAMA**. The growth of this species is a little more upright than asteroides and the flowers are slightly larger. The color is lavender pink, about the shade of an America Gladiolus. It will stand up as a cut flower better than Asteroides, and is quite useful for cutting on some occasions. As a border plant it gives a beautiful variety. 3-5 feet. September-October. Divisions.

BUDDLEIA (Summer Lilac)

- ***VARIABILIS MAGNIFICA** (Orange-Eye Butterfly-bush). Lilac colored panicles 4 to 6 inches long. Blossoms from July to September. Really a shrub in character. Small plants from pots. 35c each, 3 for \$1.

CAMPANULA

- ***MEDIUM** (Canterbury Bells). These are biennials. They make a brilliant show in the garden and are also valuable for cutting. Strong plants, mixed colors, or rose, blue, and white, separate.
- ***MEDIUM CALYCANTHEMA** (Cup and Saucer). Mixed colors, beautiful form of Campanula Medium.
- CARPATICA** (Carpathian Hare Bell). Compact tufted plants, about 9 inches tall. Flowers from June to August. Color, blue. For rockery or front of border.
- ***PERSICAEFOLIA** (Peach Bell). The waxy flowers of this variety are most valuable for cutting as well as attractive in the border. Blue and white, 18 inches.
- ROTUNDIFOLIA** (Harebell). Nodding, bell-shaped blue flowers on slender, wiry stems. Is native here, both on poor, sandy soil, and on the very brinks of steep quartzite cliffs. 18-24 inches. June and July. This is our native form of Scotch Bluebell.

- TRACHELIUM** (Coventry Bells). Purple flowers, 2-3 ft. June and July.

CENTAUREA (Cornflower)

- DEALBATA** (Persian Centaurea). Rose colored flowers. 24-30 inches. June and July.
- MACROCEPHALA** (Globe Centaurea). Big heads of thistle-like yellow flowers in July. Plants 4-5 ft. The brown, globe shaped buds are as ornamental as flowers.
- ***MONTANA** (Mountain Blue). Much like the blue Bachelor's Button, but the flower stems are heavier. 24-30 inches. May and June.



Shasta Daisy Alaska



Coreopsis

CERASTIUM (Snow-in-Summer)

- TOMENTOSUM**. A low growing border plant, covered with a mass of white flowers the last of May and early June. The hairy silver-colored leaves are very attractive all summer. Desirable for the front of the border and much used as underplanting with Darwin Tulips. Also very attractive in the rockery.

CHIVES

- Usually grown as a kitchen herb, but the round heads of lavender purple flowers are beautiful in the border or rockery. 20c each, 6 for \$1.

CHEIRANTHUS

- ALLIONI** (Siberian Wallflower). Brilliant orange flowers in June and July. 8-12 inches. A biennial in this climate. Very sweet scented and free flowering.

CLEMATIS

- RECTA**. Showy clusters of fragrant creamy white flowers in June and July. 2 to 3 feet. 35c each, \$3.50 per dozen.

COREOPSIS (Tickseed)

- ***LANCEOLATA**. One of the most useful Hardy Plants for cut flowers. If not allowed to form seeds, it will keep up a profusion of flowers for cutting from June through most of the summer. The flowers are held erect on the long, slender stems. Bright yellow. 2-3 feet. June to August.

*CONVALLARIA

MAJALIS (Lily-of-the-Valley).
Loves a partly shaded location.
Everybody's favorite. Clumps
of 4 to 6 "pips."

HARDY CHRYSANTHEMUMS (Shasta Daisy)

As a class, white Daisies are one of the most useful flowers for those desiring a quantity for cutting. They are free-flowering, lend themselves to a great variety of artistic uses and nearly everybody loves daisies. The following give a splendid choice.

SHASTA DAISY ALASKA.

The Shasta Daisy is very well known to all flower lovers. It was originated by Luther Burbank. Large white flowers with yellow centers. July. 18-24 inches.

LATIFOLIUM. Flowers here early in July, and if given reasonable care will supply cut flowers till in September. Grows 3 to 4 feet high, and makes quite a bushy plant. Flowers not quite so large as Shasta Daisy Alaska. This is not a new variety but its full value does not seem to be appreciated. Stands hot weather well.

LEUCANTHEMUM (Memorial Daisy). Usually in flower in this latitude by Memorial Day. Can be had in flower before that date by growing in a protected position or in a deep frame. When forced



Lily-of-the-Valley

moderately it blooms freely in March. Very hardy, flowers freely on long stems. Not so large as Shasta Daisy Alaska, but desirable because of its earliness. White daisy, yellow center.

MAXIMUM. (Moonpenny Daisy). Larger plant and flower than the Shasta Daisy Alaska and I think somewhat hardier with us. 20-28 inches.

ULIGINOSUM (Giant Daisy). Also known as *Pyrethrum uliginosum*. Upright growing plants 4 to 5 feet tall, covered in September with medium sized white daisies. Very useful and showy in the border.

GARRY-NEE-DULE DELPHINIUMS

It has always been an argument of mine that no true lover of flower beauty would become a specialist of one certain kind to the exclusion of other varieties of flowers. This I still hold to be true, yet I find that we are specializing, in a measure, on some classes or varieties of plants for various reasons. One of the beautiful kinds of plants we find ourselves giving special attention is the **HARDY DELPHINIUM**. We now grow our own originations, the **WHITE HYBRID DELPHINIUM**, in large quantities, as well as thousands of the beautiful **GARRY-NEE-DULE STRAIN OF BLUE HYBRIDS** and **D. BELLADONNA** and **D. BELLAMOSUM**.

If you are specially interested in this wonderful flower, send fifty cents to N. F. Vanderbilt, San Rafael, California, and he will send you a copy of the *Delphinium Magazine*, which gives the latest facts.

BELLADONNA (Everblooming Larkspur). If supplied with plenty of moisture, *Delphinium Belladonna* often flowers three times during the summer, provided the old growth is cut away when the flowers have withered. Because of the looser arrangement of the flowers on the stalk, this variety is more used for cut flower purposes than the more dense cylindrical heads of the Hybrid and *Formosum* types. Beautiful sky blue, 30-40 inches. June to frost.

PRICES:—UNLESS OTHERWISE NOTED, PRICES FOR PLANTS ON THIS PAGE ARE 25c EACH. \$2.50 dozen, \$15 per 100.



A Glimpse Into Our Delphinium Nursery at Garry-nee-Dule

DELPHINIUMS (CONTINUED)

DARK BLUE BELLADONNA. There is also a dark blue type of the Belladonna known sometimes as "Bellamosum," which is identical with the light blue except color.

GARRY-NEE-DULE WHITE HYBRIDS. A tall growing white hybrid Delphinium, with single flowers. 50c each, \$5 per dozen.

"SUMMER CLOUD" WHITE DELPHINIUMS. Strong growing plants with large single white flowers. The flowers of the Summer Cloud are at least 1 1-2 inches across. 75c each, \$7.50 per dozen.

"FLORA TOOLE" WHITE DELPHINIUMS. This is our latest improvement in White Hybrid Delphiniums. This type is later flowering by two weeks than the other white hybrids, the stalks are very strong and heavy so they are not easily broken by the wind, and the flowers are of large size with a beautiful silvery sheen. These plants are seedlings from the original plant of "Flora Toole," but most of them are semi-double, though a very few may have single flowers. Our introductory price for this variety was \$5, we are selling these strong year old clumps for \$1 each or \$10 dozen.

GARRY-NEE-DULE BLUE HYBRIDS. Wonderfully beautiful flowers ranging from lightly tinted lavender through many shades of blue to deep purple. Some are bi-colored with tints of mauve and plum as well as blue. Some have white centers and some have black or brown "bees" in the center. A dozen of these plants will give a fascinating variety of colors and forms. Price, \$2.50 dozen, \$15 per 100.

SPECIALY SELECTED BLUE HYBRIDS. For those who have special color preferences we can supply the following color classes. These plants have been selected and marked in the field and all have large full flowers. We can supply:

Light blues.

Deep blues.

Deep blues tinted with mauve or pink.

Light blues tinted with mauve or pink.

Bright blue and mauve or pink.

Price for any of these specially selected plants, 50c each, \$5 per dozen.

"BABY" DELPHINIUMS

Last year we added "Baby" Plants of Delphiniums with very good results for our customers. These are young plants started in the greenhouse in the winter and established in small pots. If given reasonable care they will flower the first summer.

We can supply BELLADONNA, BELLAMOSUM, and GARRY-NEE-DULE BLUE HYBRIDS at 15c each, \$1.50 per dozen, \$10 per 100, and SUMMER CLOUD, WHITE HYBRIDS at 25c each, \$2.50 per dozen.

DIANTHUS (Pinks)

ALWOODI, MARY, JEAN, PHYLLIS. 30c each, \$3 dozen. One each of 3 kinds, 75c. For description see page 2.

BARBATUS (Sweet William). This is one of the favorites of the Old Fashioned Garden. With care it will last as a true perennial but is generally grown as a biennial. Some of the solid color kinds, such as the Newport Pink, white and scarlet, are useful as cut flowers and no really old fashioned garden is complete without a row or group of Sweet William. Mixed colors, 15c each, \$1.50 per dozen.

Prices:—Unless otherwise noted, prices for plants on this page are 25c each, \$2.50 dozen, \$15 per 100.



Double Form Blue Hybrid Delphinium



Gaillardia

*DORONICUM (Leopard's Bane)

EXCELSUM. Bright yellow daisy-like flowers in late May and June and scattering through summer. Prices, 40c each, \$4.50 per dozen.

ECHINOPS (Globe Thistle)

***RITRO.** Coarse, thistle-like plants with round heads of blue flowers. Flowers sometimes used in dried bouquets. Five feet high. July and August.

ERYNGIUM (Sea Holly)

***AMETHYSTINUM.** Steel blue flowers and stems. Something different for the border. Sometimes cut and dried for winter bouquets. 20-30 inches. July and August.

EUPATORIUM

***AGERATOIDES** (White Snakeroot). One of the few plants that do better in the shade than in the sun. Heads of white ageratum-like flowers in September. 18-24 inches. Very good for cut flowers.

FUNKIA (Plantainlily)

CAERULEA. Broad green leaves, blue or purple flowers in June. All the Funkias are good for either sun or shade.

LANCEOLATA. Lilac flowers in September. 18 inches to 2 feet.

PRICES:—UNLESS OTHERWISE NOTED, PRICES FOR PLANTS ON THIS PAGE ARE 25c EACH, \$2.50 dozen, \$15 per 100.

DIANTHUS (Continued)

NEWPORT PINK. Lovely water-melon pink.

SCARLET—Bright scarlet.

WHITE—Pure white.

CAESIUS (Cheddar Pink). Close growing tufts of greyish green leaves that are ornamental in the rockery or front of border, even when not in

flower. Clove scented single pink flowers in June on stems 6 to 8 inches high. A free bloomer.

CRUENTUS. Heads of dark red flowers, not fragrant. 6-8 inches high. Good for the rockery.

DELTOIDES (Maiden Pink). Small, bright rose flowers in profusion. For rockery or front of border. 6 inches. June. Foliage a pretty green.

LATIFOLIUS ATROCOCCINEUS (Ever-blooming Hybrid Sweet William). Brilliant crimson flowers enjoyed throughout the summer

***PLUMARIUS** (Hardy Garden Pink). Beautiful clove scented blossoms which are useful for cutting as well as furnishing a bright spot in the Hardy Garden during June. Mixed colors, double and single.

***HOMER.** A double, deep pink variety, with darker centers.

SUPERBUS. Fringed white and pink flowers. 8-12 inches. June. Useful in rockery.

DICENTRA (See Bleeding Heart).

DIGITALIS (Fox Glove)

GLOXINAEFLORA. Because of its stately beauty the Foxglove, as in the case with the Hollyhocks, is almost symbolical of the Old Fashioned Garden. Perennial with care in milder climates but biennial with us. Sometimes the stems are cut but the flowers droop just a little after cutting which spoils the stately effect. In mixed colors.

GAILLARDIA (Blanket Flower)

***GRANDIFLORA.** One of the most desirable of Hardy Plants as it is one of the few perennials that flower all summer. Flowers in different combinations of yellow, orange, maroon, and red. Invaluable for cutting. Strong plants. As a bedding plant also good, and showy.

GYPSOPHILA

***PANICULATA.** Single. Tiny white flowers giving a mist-like effect. Is very useful in summertime to use with other cut flowers, and may be dried for winter bouquets. July. 24-30 inches. 25c each, \$2.50 per dozen.

***PANICULATA.** Double. Much more attractive than the single form of Baby's Breath. Price, 75c each, 3 for \$2.

GYPSOPHILA REPENS (Creeping Gypsophila).

A very attractive creeping plant for the rockery with a profusion of white flowers in July and August. Only a few inches high but spreads over a space of 18 to 30 inches.

Mr. W. A. Toole:—The plants came yesterday in fine condition. If they do not live, it will not be the fault of poor plants. I thank you for your kind replacement. The white are rare here. These will advertise your plants for I have visitors daily in my garden, as it is open to the public the entire season. Again I thank you.—MRS. A. C. LEWIS, Ashland Lodge, Taunton, Mass.

HARDY GRASS

FESTUCA ALPINA. Low growing dark green bunches of foliage. Interesting to add variety to the rock garden.

PHALARIS ARUNDINACEA VARIEGATA (Gardener's Garter). Large variegated foliage in heavy clumps.

HELIANTHUS (Perennial Sunflower)

***WOLLY DODD.** Deep yellow flowers.

***ORGYALIS** (Willow Leaved Sunflower). Canary yellow.

HEMEROCALLIS (Yellow Day Lily)

***FLAVA** (Lemon Lily). Sweet scented clear yellow. The only one of the day lilies that is satisfactory as a cut flower. 2 1-2 ft. June.

FULVA (Orange Lily). Copper orange. 3 feet. July.

GOLD DUST. Bright yellow, buds and reverse petals bronze. 2 1-2 feet. June.

KWANSO fl. pl. Double orange flowers with dark shadings. 4 ft. July and August.

THUNBERGI. Rich buttercup yellow flowers. Flowers freely throughout July. 4 feet.

HEUCHERA (Coral Bells)

ALBA. Creamy white. 35c each.

ROSEA. Tall, rose colored. 35c ea.

HOLLYHOCKS

No garden seems complete without a few rows of Hollyhocks. Appear to best advantage if backed up by a fence or building.

DOUBLE. Mixed colors, or crimson, pink, salmon, rose and yellow separate.
SINGLE FLOWERED. Mixed only.

IRIS

If you haven't seen the many newer developments in Iris of the last six or eight years, the beautiful colorings and large size of some of the flowers will surprise you. While not enough of an Iris "crank" to appreciate all the fine points of some of the newer high priced varieties, I can assure you the following, while not high in price, are most satisfactory. Fortunately there are many of the most beautiful Iris that are not high in price. I am listing a few of these here. We now have about two hundred varieties, too many to list in this catalog. If interested, write for my special Iris List, which will be out this spring, and which will give a complete list of the kinds we can supply.

SPECIAL IRIS OFFER NO. 1

One each of the following 6 varieties of Iris, labelled, for \$1.00, list price \$1.50. Three collections, \$2.50. Clory of Reading, Mrs. Alan Gray, Rhein Nixie, Sherwin Wright, Wyoming, Pallida Dalmatica.

SPECIAL IRIS OFFER NO. 2

One each of Lent A. Williamson, Steepway, Mary Garden, Princess Beatrice, Dr. Bernice, Red Riding Hood, Belladonna, Quaker Lady, Perfection, Georgia, 10 plants in all for \$3.00. List price, \$5.50.

S. is for standards, F. for falls or lower petals.

ALBERT VICTOR. S. light blue; F. lavender, hair veined brownish purple. 25c each; 3 for 60c; \$2 per dozen.

BELLADONNA. An early plicata; S. and F. white feather-stitched with violet. 50c each; 3 for \$1; \$3.50 per dozen.

DR. BERNICE S. coppery bronze; F. velvety crimson. In effect a brown Iris. 25c each; 3 for 60c; \$2 per dozen.

FLORENTINA ALBA. The old, early flowering, lavender white. 25c each, 3 for 60c; \$2 per dozen.

GERTRUDE. A good early dark blue. 25c each; 3 for 60c.



Hollyhocks



Iris

PRICES:—UNLESS OTHERWISE NOTED. PRICES FOR PLANTS ON THIS PAGE ARE 25c EACH, \$2.50 dozen, \$15 per 100.

IRIS (Continued)

- GEORGIA.** Uniform soft cattleya rose. 60c each; 3 for \$1.50.
- GLORY OF HILLEGOM.** A good blue Iris, excellent for mass planting. 25c each; 3 for 60c; \$2 per dozen.
- GLORY OF READING.** S. deep blue; F. royal. 25c each; 3 for 60c; \$2 per dozen.
- HER MAJESTY.** S. lovely rose pink; F. bright crimson tinged with darker shade.
- LORELY.** S. straw yellow; F. violet purple, edged yellow. 25c each; 3 for 60c; \$2 per dozen.
- LENT. A. WILLIAMSON.** S. broad, soft campanula violet color; F. very large, velvety royal purple. 60c each; 3 for \$1.50.
- MONSIGNOR.** S. pale violet; F., veined with deep purple. 25c each; 3 for 60c; \$2 per dozen.
- MARY GARDEN.** An odd yellowish white with, S. tinted lavender; F. dotted with maroon. 35c each; 3 for 80c; \$2.50 per dozen.
- MRS. ALAN GRAY.** Light lilac pink. 25c each; 3 for 60c; \$2 per dozen.
- MAD. CHEREAU.** An old favorite. A long shaped flower, white feathered on the edge with porcelain blue. 25c each; 3 for 60c; \$2 per dozen.
- MRS. NEUBRONNER.** Deep golden yellow, but darker than Aurea.
- PALLIDA DALMATICA.** S. and F. both a lovely lavender blue, and the flower has a rich fragrance of unfermented grape juice. A very old kind but one of the best. 25c each; 3 for 60c; \$2. per dozen.
- PRINCESS BEATRICE.** There is much confusion and discussion as to whether this variety is better or different than Pallida dalmatica. Personally I can see but little difference. 35c each; 3 for 85c; \$3 per dozen.



Showing Iris in the Border

- PERFECTION.** S. light blue; F. dark, velvety, violet black; midseason. 25c each; 3 for 60c; \$2 per dozen.
- QUAKER LADY.** S. smoky lavender with yellow shadings; F. ageratum blue and old gold. A most lovely variety. 25c each; 3 for 60c; \$2 per dozen.
- RED RIDING HOOD.** A small, free flowering, dull red Iris. 35c each; 3 for 85c.
- RHEIN NIXIE.** S. white; F. violet blue; white margin. 25c each; 3 for 60c; \$2 per dozen.
- SHERWIN-WRIGHT.** A bright golden yellow, very free flowering. While the flower is small, it is still the very best deep clear yellow variety. 25c each; 3 for 60c; \$2 per dozen.
- STEPWAY.** A smooth, red tinted flower with reflections of peacock blue, apricot and green. While the colors of this variety are all soft and harmonious, the flowers are the most conspicuous of any at a distance. \$2 each; 3 for \$5.
- TINEA.** Medium blue, shaded lilac. Good for mass planting. 25c each; 3 for 60c; \$2 per doz.; \$10 per 100.
- WALHALLA.** An intermediate Iris. S. lavender blue; F. violet-purple. Large flowers. 25c each; 3 for 60c; \$2 per dozen.
- WYOMISSING.** S. creamy-white, suffused soft rose. F. rose base shading to flesh colored border. Massed, the color effect is light lilac pink. Very fine. 25c each; 3 for 60c; \$2 per dozen.

OTHER IRIS

- A. W. TAIT.** Luxuriant foliage, pale blue flowers late in June. 25c each; \$2.50 per dozen.
- OCHRALEUCA.** Narrow luxuriant foliage. 5 ft. high. Ivory white flowers. 50c each.
- PSEUDO-ACORUS** (Yellow Water Flag). Has bright yellow flowers. 3 ft. 25c each; \$2 dozen.
- SIBERICA ALBA** (Snow Queen). Ivory white. 25c each; \$2 per dozen.
- SIBERICA BLUE KING.** Much like Orientals but larger and earlier. 25c each; \$2 per dozen.
- SIBERICA ORIENTALIS.** A brilliant blue. 25c each; \$2 per dozen.
- VERSICOLOR.** Violet blue flowers. This and the preceding varieties are the only iris that may be safely planted where water stands most of the time. 20c each; \$2 per dozen.

DWARF IRIS

- CRISTATA.** A dainty little creeping variety for the rockery. 3 inches high. Rich amethyst blue. 25c each; 3 for 60c.
- PUMILA CYANEA.** A very early dwarf blue. Good for rockery. 25c each; 3 for 60c.
- PUMILA SCHNEEKUPPE.** Early dwarf; cream white flowers. 25c each; 3 for 60c.

LATHYRUS (Perennial Pea)

- ***LATIFOLIUS.** Easily grown, will do well in the shade. Flowers not sweet scented. Mixed colors, 6 feet. Flowers in July and August.

LILY-OF-THE-VALLEY

- Clumps for planting in shady corners or edges of shrubbery. 5 or 6 pips in a clump.

Ottumwa, Iowa., Sept. 4, 1926.

- Mr. Toole: Just a line to say we are having much pleasure from your Garry-nee-Dule Baby Hybrid Delphiniums. Such lovely shades and combinations we have Baby Phlox were equally satisfactory and surprising in BANNISTER, 121 N. College Street.

never seen and every one of singular beauty. The their size and bloom for the first season.—MISS E.



Part of Field of Regal Lilies Grown by Herman Christensen, Oshkosh, Wis.

HARDY LILIES

Lilies are attracting increasing attention as Hardy Garden subjects. The Candidum and Umbellatum Lilies may be planted 2 or 3 inches deep, the balance about 6 inches deep. All kinds need good drainage around the bulb and will be helped if planted on a bed of 2 or 3 quarts of sand or gravel.

AURATUM (Gold Banded Lily). Flowers white, dotted crimson, with a gold stripe down the center of each petal. Fragrant. These bulbs often arrive too late in the fall for planting, in which case we send in the spring. 8-9 inch bulbs. 35c each; \$3.50 per dozen.

CANDIDUM (Madonna Lily). Clear waxy white flowers, fragrant. Bulbs should be planted in August. Flowers in June. Large bulbs. 50c each; \$5 per dozen.

UMBELLATUM (Candlestick Lily). Orange red flowers in upright umbels. Flowers in June. Plant spring or fall. 25c each; \$2.50 per dozen.

REGALE (Regal Lily). White shading to yellow in center and tinted pink on outside. Flowers in July. Bulbs may be planted in spring. Small bulbs, 25c each; \$2.50 per dozen. Large bulbs, 50c each; \$5 per dozen.

SPECIOSUM RUBRUM. White, spotted rose red. Plant late fall or early spring. Large, 35c each; \$3.50 per dozen.

TIGRINUM (Tiger Lily). The old fashioned Tiger Lily of our gardens. Orange, spotted purple. Plant spring or fall. Flowering size bulbs, 25c each; \$2.50 per dozen.

LINUM (Flax)

PERENNE. During late spring and early summer a group of these will be a mass of blue in the morning, the flowers dropping about ten o'clock, revealing the beautiful foliage, to be followed by another mass of blue the next morning. For the border or rockery. Height 2 feet.

LUPINUS (Lupine)

POLYPHYLLUS. Mixed colors. Long spikes of pea shaped flowers. Plants grow to three feet high. 35c each; \$3.50 per dozen.

LYCHNIS (Maltese Cross)

***CHALCEDONICA**. Heads of brilliant scarlet flowers that are very striking. Combined with white Achillea and the Blue Delphinium the cut stems form an ideal patriotic bouquet on July 4. Blossoms in July. Two to three feet.

LYSIMACHIA (Loosestrife)

CLETHROIDES. Long spikes of white flowers from July to September. 2 feet.

LYTHRUM

ROSEUM (Rose Loosestrife). Thrive in any situation. Good for waterside planting. Spikes of rose colored flowers in July and August. 2-3 ft.

MONARDA (Owesego Tea)

DIDYMA. Scarlet. Brilliant scarlet flowers during July and August.

MYOSOTIS

FORGET-ME-NOT. Sky blue. Dwarf. Best in moist, shady location.

NEPETA (Catnip)

MUSSINI. Gray foliage and lavender blue flowers. Low growing but rather long trailing branches. Good in front of the border but especially attractive in rockery. A very pretty effect is obtained in the rockery if a group is planted near the pink Saponaria ocyroides.

OENOTHERA

FRUCTICOSA (Sundrops). Flowers abundantly in sunny situation through June and July. Clear bright yellow. 18 inches.

PRICES:—UNLESS OTHERWISE NOTED, PRICES FOR PLANTS ON THIS PAGE ARE 25c EACH; \$2.50 PER DOZEN; \$15 PER 100.

PAPAVER (Poppy)

NUDICAULE (Iceland Poppy). Biennial. Neat tufts of light green foliage from which spring the slender leafless flower stems. Start to flower very early in the spring and continue into summer. 1 foot. Mixed colors.

ORIENTALE (Oriental Poppy). These are the brilliant orange-scarlet flowers so showy in May or June. Easy to grow in any soil, when once established. Foliage dies down in August to be followed by a new growth of leaves. Plant in early spring or fall. 30-36 inches.

—**MRS. PERRY**. Like the red Poppy in growth but a beautiful salmon rose color. 35c each; \$3.50 per dozen.

PENSTEMON (Beard Tongue)

***BARBATUS TORREYII**. Tall spikes of brilliant scarlet flowers that make a striking appearance in the border during June to August. Grows to a height of 3 to 4 feet. The cut flowers give distinct and pleasing effect when used for decorative purposes.

*PEONIES

While Peonies will thrive on a variety of soils, they will pay well for soil that is fertile. Any fertilizer applied should be well mixed with soil, and raw or unrotted manure should not be allowed to come in contact with the roots or crowns.

When planting Peony roots, do not set them too deep. About two inches below the surface is deep enough. The plants will not thrive or blossom well if the buds are set too far down.

The prices are for strong 2-3 eye divisions, with adequate root system.

Numbers preceding names refer to rating of American Peony Society.

WHITE

9.0 **BARONESS SCHROEDER**. Rose type, flesh colored bud bleaching to white when open. \$2 ea.

8.1 **COURONNE D'OR**. Semi-rose type, late midseason. Color, white with golden yellow stamens which suggest the name, "Crown of Gold." 75c each; \$7.50 per dozen.

8.1 **DUCHESS DE NEMOURS**. Crown type, early and midseason. Color, beautiful sulphur white changing to pure white with age. Fragrant. 75c each; \$7.50 per dozen.

9.3 **FESTIVA MAXIMA**. Large globular flower of rose type. Early. Color pure white with crimson flecks. 60c each, \$6 per dozen.

7.9 **MADAM DE VERNEVILLE**. Bomb type early. Color, pure white with a few red flakes on center petals. Fragrant. 50c each; \$5 per dozen.

8.4 **MARIE LEMOINE**. Compact round flower of rose type, very late. Color white, with cream white center. \$1 each, \$10 per dozen.

6.8 **PRIMEVERE**. A beautiful light yellow if picked in the bud and developed indoors. Fades white in sun. \$3 each.

6.8 **QUEEN VICTORIA**. Bomb type. Early and midseason. Good standard white. 50c each; \$5 dozen.

—**SOLFARTE** (Crown Type). Midseason. The guard petals are white, center sulphur yellow changing to white. 75c each; 3 for \$2.

SEE MY SPECIAL OFFER ON PEONIES—PAGE 25.

PRICES:—UNLESS OTHERWISE NOTED, PRICES FOR PLANTS ON THIS PAGE ARE 25c EACH; \$2.50 PER DOZEN; \$15 PER 100.

PINK AND ROSE

8.4 **CHESTINE GOWDY**. Cone shaped flower. Outer petals silvery pink, inner petals deeper pink, center splashed with crimson. Fragrant. \$3 each.

7.6 **EDULIS SUPERBA**. Rose type, very early. Color bright mauve pink. Fragrant. 50c each; \$5 per dozen.

—**HUMELI**. Rose type, very late. Large compact flower. Deep pink and distinctive cinnamon scented. 50c each; \$5 per dozen.

—**L INDISPENSIBLE**. Rose type, late midseason. A ball of delicate baby pink. 60c each; \$6 per dozen.

9.2 **MONS JULES ELIE**. Large flowered of the bomb type. Early midseason. Color deep shell pink, fragrant. \$1.50 each; \$15 dozen.

7.7 **PHILOMELE**. Anemone type, midseason. A light yellow center with pink guard petals and crown. \$1 each.

8.3 **VENUS**. Beautiful shell pink of crown type. Midseason. Strong grower and very fragrant. \$2 each.

RED

—**DE CANDOLLE**. Rose type, cup shaped bloom. Currant red shaded amaranth. Good for landscape effect. 60c each.

7.1 **DELACHEI**. Late midseason. Rose type, a dark purple red. Free bloomer. 60c each.

8.4 **FELIX CROUSSE**. Bomb type, late midseason. Brilliant red color. Fragrant and free bloomer. 75c each, \$7.50 per dozen.

FRANCOIS ORTEGAT. Semi-rose type, Midseason. Deep crimson with golden yellow anthers. Fragrant. 60c each.

8.8 **KARL ROSENFELD**. Dark velvety crimson with a trace of purple. \$1.50 each.

8.7 **MARY BRAND**. Large, semi-rose type, midseason. Bright dark red. \$3 each.

OFFICINALIS RUBRA. This is the old fashioned bright red early peony. \$1 each.

OFFICINALIS SMITHII. Same shade as *Officinalis Rubra* but the flowers are single with bright golden yellow stamen. Very early and a strong grower with us. 50c each; \$5 dozen.

8.8 **RICHARD CARVEL**. Early crimson. Good bloomer. Fragrant. \$5 each.



HARDY PERENNIAL PHLOX

FIELD GROWN PLANTS



Hardy Phlox Provides the Bright Spot in the Summer Garden

Hardy Phlox are among the most beautiful and showy plants to be found in the Hardy Garden during July, August and early September. They will endure in light shade better than many plants but are at their best in the open. While the Garden Phlox needs plenty of water during the hot summer months when it is flowering, it must have well drained soil to thrive. The variety Miss Lingard, which is of a different species to the others, requires an extra amount of moisture and will do well in soil that is too wet for other kinds. They will repay the extra labor and expense of making the soil quite fertile. The Phlox is quite hardy and does not require winter protection. It will repay to divide and reset the clumps of Phlox every four or five years.

Red spider is the greatest enemy of Phlox. This may be kept in check by forcibly spraying the under side of the leaves with cold water from the hose. A very thin glue made by dissolving a pound of glue in four or five gallons of water and sprayed on the under side of the leaves is also effective.

We can supply strong one year old field grown plants of the following varieties of Phlox for spring shipment. Descriptions will be found under the head of "Baby" Phlox.

BRIDESMAID, B. COMPTE, ECLARIEUR, EUROPEA, MISS LINGARD, MRS. JENKINS, RHEINLANDER, RYNSTROM, R. P. STRUTHERS, SIEBOLD, THOR, VON HOCHBURG, F. G. VON LASSEBURG, WIDAR. Price:—

Strong field grown plants of any of the above kinds, 25c each; \$2.50 per dozen; \$15 per 100.

For fall planting we will be able to supply any of the kinds listed under "Baby" Phlox.

"BABY PHLOX"

We call them "Baby" Phlox to distinguish them from older field grown plants. Our supply of Phlox plants is renewed by growing from cuttings in the greenhouse during the winter and spring. For several years we have been selling increasing quantities of these young plants to our customers who have been so well pleased that we feel we can recommend them very highly. By this method we are able to supply you with strong, vigorous growing young plants, that are almost sure to flower the first season, at a considerable reduction in price from that charged for older plants.

Price: Except where noted we can supply the following varieties from about March 20 to June 10 in "Baby" Phlox at 15c each; \$1.50 per dozen; \$10 per 100.

You may select any variety or combination of varieties you wish. We positively cannot supply "Baby" Phlox in the fall.

B. COMPTE. Bright amaranth red.
BERANGER. White suffused with mauve.
BRIDESMAID. Tall white with crimson eye.
DEUTSCHLAND. Flowers moderate in size, but the nearest to a bright scarlet of any Phlox we have seen. New. 20c each, 3 for 50c.

ECLAIREUR. Rosy magenta, strong grower.
ELIZABETH CAMPBELL. Light salmon pink. A great favorite.
EUROPEA. Large white with carmine eye.
FERNAND CORTEZ. Crimson overlaid with coppery bronze.



A Field of Hardy Phlox in One of the Phlox Nurseries at Garry-nee-Dule



Hardy Phlox Seem to Be a Universal Favorite in the Summer Garden

"BABY" PHLOX (Continued)

FIREBRAND. A large flowered new red variety, good but not so bright as the name would indicate. 20c each; 3 for 50c.

FLORA RIEDY. Best white we have seen. Originated by Miss Sara Toedt of Hamburg, Iowa. New. 25c each.

GEFION. Peach blossom pink.

GENERAL VON HEUTZ. Bright salmon with light center. Peculiar wrinkled foliage.

KOENIGSHOFER. A strong growing large flowered scarlet.

MIA RUY. Dwarf white with very large flowers. 12 inches. New. 20c each; 3 for 50c.

MILLY VON HOBOKEN. Light mauve-rose with dark eye. New.

MISS LINGARD. Early white with delicate lilac eye.

MRS. JENKINS. A very tall growing white.

RHEINLANDER. Beautiful large soft pink with deeper eye.

RIVERTON JEWEL. Deep mauve with crimson center.

ROSALIND. A new variety with large carmine flowers and a sweet clove scent.

R. P. STRUTHERS. Bright rose carmine, red eye.

RYNSTROM. Carmine rose.

SIEBOLD. Orange scarlet, crimson center.

SIR EDWIN LANDSEER. Bright crimson.

STROEHLIN. A good bright scarlet.

THOR. Deep salmon pink, red eye.

VON HOCHBERG. Bright crimson.

VON LASSBURG. Very large pure white.

WIDAR. Large, lavender blue shading to white toward center.

SPECIAL OFFER NO 1—"Baby" Phlox

We are propagating an extra amount of the following kinds and make this special offer of 14 PLANTS OF "BABY" PHLOX for \$1.50. Two each of EUROPEA, Mrs. Jenkins, Von Hochberg, Siebold, Widar, Rheinlander, Miss Lingard, each kind labeled.

SPECIAL OFFER NO. 2—"Baby" Phlox

SIX EACH OF THE FOLLOWING NINE KINDS, enough to make a striking group of each variety, for \$5.00. EUROPEA, MISS LINGARD, RYNSTROM, RHEINLANDER, MRS. JENKINS, SIEBOLD, VON HOCHBERG, WIDAR R. P. STRUTHERS.

OTHER VARIETIES OF PHLOX

AMOENA. Low growing rose pink.

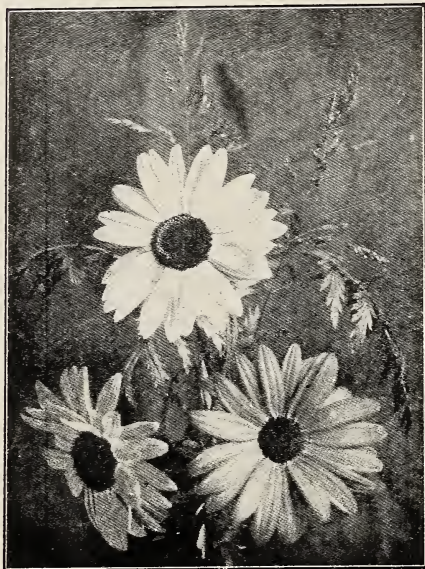
DIVARICATA (Wild Sweet William). Our native woods Phlox. Fragrant flowers during May.

DIVARICATA ALBA. A white flowering form of the above.

DIVARICATA LAPHAMII. Lavender flowers, all one color. Flowers freely. Blooms same time as Darwin Tulips.

PILOSA (Prairie Phlox). A native in the open places. Prairie Phlox flowers somewhat later than the Woods Phlox and, under cultivation, continues for several weeks. Masses of brilliant rosy carmine flowers.

SUBULATA. Moss pink, white, pink or lavender.



Pyrethrum Roseum Hybridum

PRICES:—UNLESS OTHERWISE NOTED, PRICES FOR PLANTS ON THIS PAGE ARE 25c EACH; \$2.50 PER DOZEN; \$15 PER 100.

PHYSALIS

(CHINESE LANTERN PLANT)

- ***FRANCHETTI.** An ornamental form of the Ground Cherry, with bright orange-scarlet lanternlike fruits. Will last all winter if cut and dried. Not ornamental in the garden.

PHYSOSTEGIA

(FALSE DRAGON HEAD)

- ***VIRGINICA.** Flowers bright, soft pink in midsummer. Plants 4-6 feet. Valuable for cutting.

PLATYCODON (Balloon Flower)

- GRANDIFLORUM.** Closely related to the Campanulas. Blue or white. July. 24-30 inches.

POLEMONIUM (Jacob's Ladder)

- REPTANS.** Another of the valuable native perennials which surprise one by thriving much better under good garden culture than in its native haunts. Spikes of showy bell-shaped flowers in May and June. About 1 foot high. May also be forced as a pot plant in the greenhouse during the winter.

PYRETHRUM

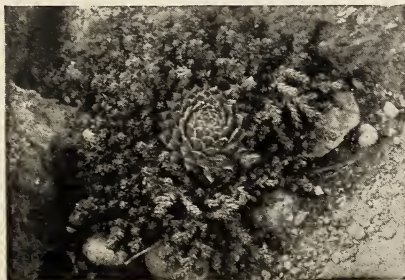
- ***ROSEUM HYBRIDUM** (Persian Daisy). Very hardy and one of the choicest of the perennials. The fernlike foliage is attractive when the plants are not in bloom and the flowers ranging from pure white through shades of pink to deep crimson are beautiful on the plant or as cut flowers. They flower the last of May and through June.
- ***ULIGINOSUM** (Giant Daisy). This is one of the most striking perennials during late summer and fall when the plants are covered with large, white flowers. 3-4 feet. Strong plants.

RANUNCULUS (Buttercup)

- ACRIS** fl. pl. (Bachelor's Button). Very pretty double yellow flowers on stems 16-18 inches high. May and June. Some of the old flower lovers who named our plants seemed to have been partial to the needs of the bachelors but surely the poor creatures need all the consideration they are likely to get.

RUDBECKIA (Coneflower)

- ***HIRTA** (Black Eyed Susan). A native here but



Sedum Acre and Sempervivum



Sedum Sarmentosum

the plants offered are strong nursery grown. The botanics classify it as a biennial but we find it perennial in character under cultivation.

- ***LACINIATA** fl. pl. (Golden Glow).
- ***PURPUREA** (Purple Cone Flower). 3-4 feet. Sept. Large, striking pinkish purple flowers. Also known as Echinacea Purpurea.

***SALVIA**

- AZUREA GRANDIFLORA.** Long willowy spikes of tubular light blue flowers. 3-4 feet. Sept.-Oct.

SAPONARIA

- OCYMOIDES** (Rock Soapwort). A very showy dwarf trailing plant that flowers for a long period. Very useful in rockeries. Pink flowers.
- **ALBA.** White flowers.

SCABIOSA

- ***CAUCASICA.** Blue lavender flowers, long stems. 2 feet. August.

SEDUM (Stonecrop)

There are a great many varieties of Sedums, and there is some confusion in the trade as to the correct names. Many kinds are not hardy here, and there are many varieties that we have not yet tried. The following we have found to be hardy under our rather trying conditions. We think they are named correctly although there is some question as to the correctness of *S. stolonifera*. All are fairly distinct in some characteristics.

All Sedums are very useful in the Rock Garden where they are adaptable to a variety of conditions, doing better than most plants planted in a sunny, dry, exposed spot.

ACRE (Goldenmoss). Low growing green, fleshy leaves, covered in July with star-shaped yellow flowers. For the rockery or as a covering for dry banks.

ALBUM. Somewhat like *S. Acre* in style of growth but the leaves have a slightly bluish cast and the growth is heavier. Flowers are nearly white. Good for the rockery.

EWERSII. Blue grey foliage and dull rose colored flowers in summer. 6 inches. For clefts in rockery.

SEDUM (Continued)

KAMSCHATICUM. Bushy little plants about six inches high. Yellow flowers in summer. Good for the fresh green foliage effect. Good in rockery or as an edging plant for the Perennial border.

SARMENTOSUM. Spreading light green foliage and greenish yellow flowers. Hardy here but must have good surface drainage.

SEXANGULARE. Green foliage and rather inconspicuous white flowers.

SPECTABLE (Showy Stonecrop). The preceding varieties of Sedum are all rather low growing while this and the following are erect and taller in growth, from 12 to 18 inches in height. Useful in the rockery and valuable in the Perennial border for the foliage is pleasing during the summer and the large flat heads of pink flowers are showy in September. Will do well in sun or shade.



Sedum Spectabile

SPECTABLE, BRILLIANT. Like the preceding but the flowers are a dark rose or red color.

STAHLII. Dark green moss like bunches, growing but a few inches high. Delicate tinted flowers in spring. Foliage crimson tipped in fall.

STOLONIFERA. This and the following two kinds I am uncertain as to correctness of names. Different lots from different growers show many variations which blend with one another till there seems no sharp dividing line. This variety has green trailing foliage, dull rose colored flowers and the foliage turns a beautiful crimson in the fall.

STOLONIFERA ALBA. The summer appearance is much like the preceding, but the flowers are nearly white. Does not color so well in the autumn.

STOLONIFERA COCCINEUM. Dark rose colored flowers, and foliage has a reddish tinge during summer but does not color so well in autumn.

SPECIAL OFFER OF SEDUMS

ONE EACH OF THE ABOVE 12 KINDS OF SEDUMS, LABELLED, FOR \$2.50.

PRICES:—UNLESS OTHERWISE NOTED, PRICES FOR PLANTS ON THIS PAGE ARE 25c EACH, \$2.50 dozen, \$15 per 100.

SEMPERVIVUM

TECTORUM (Houseleek). Rosette of fleshy leaves. For the rockery.

SIDALACEA (Greek Mallow)

ALBA. Erect bushy plants, 2-3 feet high. White flowers resembling a small Hollyhock in form. In June and July.

SPIRAEA (Goat's Beard)

ULMARIA fl. pl. Double, creamy white flowers in July and August. 35c each; 3 for \$1.

STACHYS

LANATA (Lamb's Ear). The downy white foliage is the ornamental feature of this plant.

STATICE (Great Sea Lavender)

LATIFOLIA. Large flat heads of tiny purplish pink flowers. May be dried and kept for months. August-September. 18-24 inches.

SWEET WILLIAM

*See *Dianthus Barbatus*.

TANACETUM

BALSAMETA (Cosmary). Pleasantly aromatic leaves. 20c each.

THERMOPSIS

CAROLINIANA. Spikes of yellow pea-like flowers in June and July. 3-4 feet.

TRITOMA (Red Hot Poker)

HYBRIDA. Showy spikes of orange and red flowers. Not hardy here.

TUNICA (Coat Flower)

SAXIFRAGA. A pretty dwarf plant with pink flowers and fine foliage. Flowers most of the summer. Good for the rockery.

VALERIANA (Garden Heliotrope)

OFFICINALIS. Showy heads of white flowers during June and July. Strong sweet scent. 3-4 ft.

VERONICA (Speedwell)

INCANA (Woolly Speedwell). Silvery foliage and blue flowers in June and July. 12 inches. Good for rockery or border.

LONGIFOLIA SUBSESSILIS (Japanese Speedwell). Dense spikes of deep blue flowers. July-August. 35c each; \$3.50 per dozen.

SPICATA. Valuable border plant. Long spikes of bright blue flowers. July to September.

VIRGINICA (Culver's Physic). Slender spikes of white or flesh pink flowers. 3-4 feet tall. August.

VINCA (Common Myrtle)

MINOR. Evergreen trailing plant, used for carpeting graves or under trees.

YUCCA (Adam's Needle)

FILAMENTOSA. The swordlike foliage is very distinct and attractive.

I guarantee safe delivery of your plants and seeds.
—W. A. TOOLE.

Wild Flowers and Ferns of the Beautiful Baraboo Bluffs and Valleys

I have been much pleased at the interest shown the past year in our new Department of Native Plants. Many former Wisconsin people have written from far off states telling of their desire to grow some of the old friends they had known as wild flowers when living here. Many more love the beauty of our own native flowers and wish to preserve them and enjoy them in their own gardens. A few more varieties have been added this year and more kinds are planned for another year as we are able to propagate them here at Garry-nee-Dule, or as we find sources of supply where the digging of the wild plants will not interfere with other people's pleasure in seeing them growing wild.

There are still thousands of acres of wild land where different kinds of our native plants grow in quantity. Because of the natural advance of civilization most of this land will be cleared, pastured, or drained, and the wild plants will be killed. It is from these places "far from the haunts of men," that professional wild plant collectors secure their stock. Many varieties are also being grown in quantities in nurseries. Therefore if you are situated so that you cannot secure these plants yourself, you can safely buy them from some of the wild plant nurseries.

NATURE'S WILD FLOWER NURSERY

The beautiful little village of Baraboo nestles in the valley between the ranges of the Baraboo Bluffs, as the very ancient quartzite hills are known, which surround it.

The location is in south central Wisconsin. These old hills were laid down as sand by the action of the waves when the first land of this continent began to rise above the sea, and since changed to very hard quartzite after the passage of countless years. The effect is of broad, rounded, "everlasting hills," though in many stream gaps and glens the rocks have been tumbled in most rugged formations. There are outcroppings of younger formations of limestone and sandstone and granite, and in the valleys between the bluffs there is iron.

Ages after the quartzite was formed the glaciers covered a part of the area, but seemingly these old hills were formidable for the ice and it ceased to advance here. So in a comparatively small area we have a wide range of conditions, bare, sun baked rocks, where only cactus and reindeer moss can grow and deep, damp fern-filled glens, soil heavy clay and of drifting sand and swamps and lakes. Here we have soil that is naturally sweet with lime and soil that is sour or acid. Hills that have been rounded by the glaciers and other hills more sharp in outline, where the glaciers did not go. This variety of conditions naturally gives a wide variety of plants, trees and shrubs. It is some of these plants that may be grown in gardens that you will find described in this section of my catalog.

There is an appeal to the spring wild flowers of our northern woods and fields possessed by no other flowers. Some of the more showy kinds are already accepted as cultivated garden plants and others will find their place in time.—W. A. TOOLE, of Garry-nee-Dule.

ANEMONE

CANADENSIS (Meadow Anemone). We find this plant growing wild in rather open moist spots. A plant in the garden will spread slowly to cover quite a space if allowed to follow its inclinations. The white flowers start to appear in June and continue for many weeks if conditions are favorable. 1-2 feet. 20c each; 6 for \$1; \$12 per 100.

PATENS (American Pasqueflower, Badger). The first flower of spring, appearing even before the Arbutus. Wild, it is found on open sandy meadows, or in open places in thin woods. The tulip shaped light lavender flowers appear before the

last snowbanks have gone. The flowers appear very close to the ground but the flower stem continues to lengthen before the flower has faded and by the time the silky plumes of the seeds appear, the stem may be 10 or 12 inches high. Must have well drained soil. Good for the rockery. 20c each; 6 for \$1; \$12 per 100.

APLECTRUM

HYEMALE (Putty Root). Single gray green leaf and stalk of yellowish flowers. Leaf disappears after flowering and another comes in fall, which lasts over winter. Often there are two connected putty-like bulbs. An orchid which likes leaf mould. 25c each.



Where the Wild Flowers Grow

be grown in gardens that you will find de-

AQUILEGIA

CANADENSIS (American Columbine). It grows freely on dry, rocky ledges in light shade or full sun. Scarlet and yellow flowers on plants 1 to 2 feet tall in late May and June. 25c each; \$2.50 per dozen.

ARISAEMA

TRIPHYLLUM (Jack-in-the-Pulpit). Who doesn't know Jack, preaching from his brown pulpit, and what country boy hasn't tried to get some innocent friend to taste of the biting hot bulb. Interesting if forced in the house in the winter like a Dutch bulb. 20c each; 6 for \$1; \$10 per 100.

ASARUM

CANADENSE (Wild Ginger). The heavy root stalks have a pleasant gingery flavor which gives this plant its name. The curious brown flowers appear in May on the large-leaved plants, which grow 6 to 8 inches in shady woods. Good for a ground cover. 20c each; 6 for \$1; \$10 per 100.

ASCLEPIAS

TUBEROSA (Butterfly Weed). Found growing naturally on light, sandy, well drained soils. Under cultivation we find it lasts for years in heavy clay, but here it flowers best during a dry season. Brilliant orange flowers in July, on plants 18 inches high. Well suited to a dry, exposed situation. Good for rockery or border. 25c each; \$2.50 per dozen.



Showy Lady Slipper

ASTER

NOVAE ANGLIAE (New England Aster). Large flowered showy aster, ranging in color from nearly white through pink and lavender, to red and purple. 4-5 ft. September. 25c each; \$2.50 per dozen.

CALTHA

PALUSTRIS (Marsh Marigold). Grows wild in boggy places and on the edges of the little streams, but will do very well in rich garden soil. Golden yellow flowers in early May. 25c each, \$2.50 per dozen.

CAMPANULA

ROTUNDIFOLIA (Blue Bell). We find this dainty little purple flower nodding and swaying at the edge of steep, rocky cliffs or on barren wastes and hummocks in swamps. Grows in sun or shade and flowers from May on throughout the summer. Does well in a variety of soils though it loses some of its charm when planted in rich soil where the growth is heavy. Identical with the Scotch Blue Bell. 25c each; \$2.50 per dozen.

CYPRIPEDIUM

Nothing is more beautiful than our native varieties of Lady Slippers. Especially effective planted in partial shade in combination with native ferns.

ACAULE (Pink Ladyslipper). Two leaves from which grow the flower stalk, 6-10 inches high. Rose pink flower in May and June. Seems to prefer a somewhat acid soil. 25c per bud; \$2.50 per dozen.

PUBESCENS (Yellow Lady Slipper). Does well in any rich partly shaded location. Yellow slipper and brown purple petals. May and early June. 25c per bud; \$2.50 per dozen.

SPECTABILE (Showy Lady Slipper). This is the finest and most showy of all orchids. It grows up to 2 feet high bearing along the stalks several rather roundish leaves, and on top one or two quite large rose-purplish or magenta and white flowers. It is a bog loving plant, yet does exceedingly well in a moist and partially shaded bed of peat or leaf loam. It is also a good plant for the cool greenhouse. Nothing can be more charming than masses of this beautiful orchid. 35c per crown or bud. Some plants have several crowns.

DICENTRA

CUCULLARIA (Dutchman's Breeches). Finely divided leaves and white flowers in long racemes. Flowers here in April and early May. Foliage dies to the ground early in the season leaving only a small bulb. Likes a rich shady spot. Does well as a rock plant. 20c each; 6 for \$1.00; \$12 per 100.

DODECATHEON

MEDIA (Shooting Star). Bunches of white to pink Cyclamen-like flowers. June. 12-18 inches.

EUPATORIUM

URTICAEFOLIUM (White Snakeroot). One to 3 ft. July to Sept. This plant will grow and in fact seems to prefer deeper shade than any late flowering plant I know of. Often found in deep, moist glens so shady that no other flowering plant grows. Will also do well in full sun but the stems are shorter and stiffer. Good as a white cut flower to use with others in bouquets. 25c each, \$2.50 per dozen, \$15 per 100.

It sometimes happens that we are able to supply wild flower plants not listed here, so send us your inquiries.

PRICES:—UNLESS OTHERWISE NOTED, PRICES FOR PLANTS ON THIS PAGE ARE 25c EACH; \$2.50 PER DOZEN; \$15 PER 100.

EUPHORBIA

COROLLATA (Flowering Spurge). Grows wild on sandy waste land and in abandoned fields. July to September. 24 inches. Many small white flowers with greenish center. Useful as cut flower to mix with others. 20c each; 6 for \$1; \$12 per 100.

GENTIANA

ANDREWSII (Closed Gentian). Purplish blue flowers in Sept. 12-16 inches. Likes a cool, moist soil. 25c each, \$2.50 dozen.

GERANIUM

MACULATUM (Wild Geranium). 12 to 18 inches in June. Light magenta or pink. Does well in light shade or sun. 20c each, 6 for \$1.

GOODYERA

REPENS (Rattlesnake Plantain). An orchid with rosettes of blue green leaves checked with white lines. Stalks of delicate white flowers. 6-12 inches high. Needs shade and leaf mould. 20c each, 6 for \$1.

HEPATICA

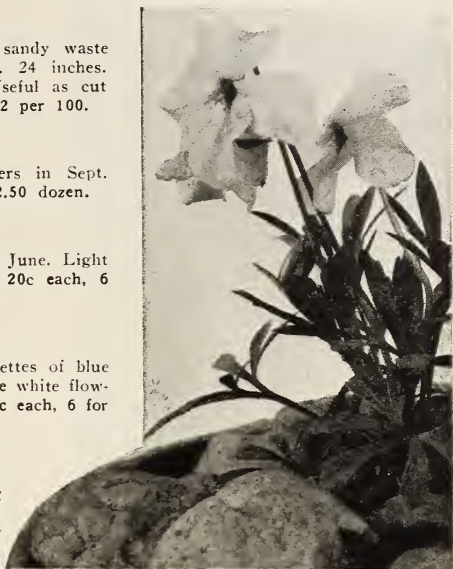
TRILOBA (Liverleaf). One of the very early spring wild flowers appearing here usually in April. 3 to 5 inches high. Does well in shade or sun in a variety of soils. 20c each, 6 for \$1, \$12 per 100.

IRIS

VERSICOLOR (Blue Flag). Native to low, wet places this Iris is well suited to water gardening, but will grow well on drier soil. Violet blue, 15-30 inches, late June. 20c each, 6 for \$1, \$10 per 100.

LIATRIS

PHYCHNOSTACHYS (Blazing Star). Button-like red flowers set on spikes or stalks. 4-5 feet. August to September. Very showy if massed in border. Appreciates good soil, but will grow on very poor soil. 25c each, \$2.50 per dozen, \$15 per 100.



Bird's Foot Violet (See Next Page)

MERTENSIA

VIRGINICA (Virginia Cowslip). One of the earliest of spring wild flowers. The bluish-green shoots and leaves are quickly followed by delicate pink buds and beautiful bell-shaped light blue flowers. Leaves disappear entirely for the rest of the year after flowering season, so it is well to plant it in connection with a bed of ferns. 1 to 2 feet. 20c each, 6 for \$1, \$12 per 100.

PHLOX

DIVARICATA (Wild Woods Phlox). 6 to 12 inches. Light lavender blue flowers in May. Will force nicely in the green house in winter. Seems to prefer a little shade when cultivated. Found wild in moist but not swampy woods. 25c each; \$2.50 per dozen; \$5 per 100.

PILOSA (Prairie Phlox). 9 to 15 inches. June. Flowers variable in color but mostly of a magenta shade. Grows naturally in open situations in swampy grounds or in poor, sandy soil. 25c each; \$2.50 per dozen; \$15 per 100.

PHYSOSTEGIA

VIRGINIANA (False Dragon's Head). 2 to 3 ft. Lilac pink. July and August. Grows naturally in rather damp soil but thrives in cultivation on almost any soil. Good in border or as cut flower. 25c each, \$2.50 per dozen, \$15 per 100.

PODOPHYLLUM

PELTATUM (Mandrake). 12 to 18 inches. May and June. White, waxy flowers hidden by two large umbrella-shaped leaves. Fruit edible, if you like it. 20c each, 6 for \$1.

POLEMONIUM

REPTANS (Jacob's Ladder). Grows in somewhat damp, shady places but does well under cultivation, under almost any conditions. 10-12 inches. May-June. Bell shaped violet blue flowers. 25c each; \$2.50 doz.; \$15 100.



Virginia Cowslip



Trillium

SANGUINARIA

CANADENSIS (Bloodroot). 6-10 inches. White. April-May. This is another one of our earliest wild flowers. Should be planted in clumps in the wild garden. 15c each; \$1.50 per dozen; \$10 per 100.

THALICTRUM

ADIANTIFOLIUM. Flowers white, foliage is the ornamental part, being much like the Maiden Hair Fern.

HARDY FERNS

There are twenty or more varieties of Hardy Ferns growing in the vicinity of the Baraboo Bluffs. Many of these varieties are not very well adapted to growing around houses—we list a few of the more popular varieties and can supply others if desired.

ADIANTUM PEDATUM (Maidenhair). one of most graceful of our native ferns.

ASPIDIUM MARGINALE (Evergreen Wood Fern). an evergreen variety with dark green fronds.

ASPLENIUM FILIX-FOEMINA (Lady Fern), a large handsome fern, two to three feet high, with finely cut foliage. One of the best for general culture

CAMPTOSORUS RHIZOPHYLLUS (Walking Fern), curious little low-growing fern for the damp, shady rockery.

CYSTOPTERIS BULBIFERA (Bladder Fern), narrow slender green fronds nearly three feet long.

ONOCLEA SENSIBILIS (Sensitive Fern), grows in quite wet places, either in shade or sun.

TRADESCANTIA

VIRGINICA (Spiderwort). 12-20 inches, ultramarine blue, June to August. Found in open ground ranging from moist to dry gravelly hillsides. A hillside of these in June, early in the morning, is very beautiful. On sunny days the flowers wither toward noon but a new lot is always there the next morning. 20c each, 6 for \$1, \$12 per 100.

TRILLIUM

GRANDIFLORUM (Wake-Robin). 10-15 inches, flowers, white, changing to pink, June. Needs rich soil and light shade. Plant tubers deep. 20c each, 6 for \$1.

UVULARIA

GRANDIFLORA (Bellwort). 10-15 inches, creamy yellow. May-June. These odd flowers with the peculiar twisted petals appear to good advantage in a planting of Hardy Ferns. 20c each, 6 for \$1.

VERONICA

VIRGINICA (Culver's Root). 3-7 ft. White or white flushed with pink, July to Sept. As seen in rich open woods or meadows at a little distance this tall plant is very striking. Useful massed in perennial border.

VIOLA

BLANDA (Sweet White Violet). The delicate sweet scent of this variety is very attractive. 20c each; 6 for \$1.

PEDATA (Bird's Foot Violet). 4-8 inches. May and June, lilac or light violet. Grows in open places on poor, sandy soil where other plants do not crowd it but it seems to do well on heavy soil if not crowded out by grass or weeds. Good for an exposed rock garden. 20c each; 6 for \$1; \$12 per 100.

PUBESCENS (Downy Yellow Violet). 6-15 inches high. Yellow flowers in May. Good for wild garden or rockery. 20c each; 6 for \$1; \$12 per 100.

ONOCLEA STRUTHIOPTERIS (Ostrich Fern), this is probably the best of any for general culture in a fern bed. One plant often has as many as fifteen fronds, gracefully drooping, hence its name of Ostrich Fern. Under favorable conditions will attain a height of three to four feet. 35c each; \$3.50 per dozen; \$18 per 100.

OSMUNDA CLAYTONIANA (Flowering Fern). clothed with loose wool when unfolding its fronds, which sometimes, under favorable conditions, attain a height of more than four feet. This variety will do well in open and dry shady places. 35c each; \$3.50 per dozen; \$18 per 100.

POLYPODIUM VULGARE (Common Polypody), a good small evergreen species for rock work.

WOODSIA ILVENSIS (Rusty Woodsia), will grow in moist soils in shade but will also grow on the most exposed sun-baked rocks. Four to six inches.

Prices, unless otherwise noted, any of the above varieties of Hardy Ferns. 25c each; \$2.50 per dozen; \$15 per 100.

You will be interested in my Special Combination Offer on Hardy Ferns.
You will find it on the inside back cover.

Toole's Prize Collections of Hardy Perennials

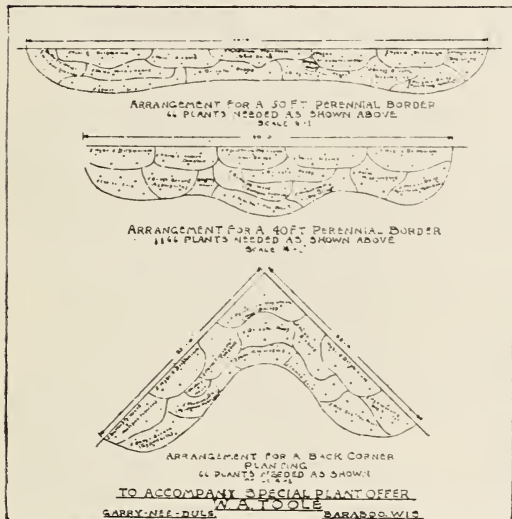
SELECTED AFTER LONG EXPERIENCE AS THE CHOICEST AND MOST APPROPRIATE PERENNIALS FOR GROUPING IN DIFFERENT LOCATIONS IN THE HARDY GARDEN TO PROVIDE A SUCCESSION OF FLOWERS FOR THE SEASON, AND TO MEET THE AVERAGE REQUIREMENTS OF SOIL, MOISTURE AND SUNLIGHT.

TOOLE'S DREAM GARDEN

For a good many years I have dreamed every winter of a garden I am going to have when spring comes, but when gardening time comes around I am so busy fixing other folk's gardens I don't have any time to make my own. Of course we have hundreds of thousands of plants out in the fields, planted in long rows, hundreds or in many cases thousands of a kind, and I like to see them grow and thrive, but it isn't like having a real garden, planned and planted as you want it for yourself.

I know some of you folks who are in much the same position would like to start a Hardy Garden, perhaps along the lot line of the back yard, but you have just never gotten to it. So I have chosen a collection of plants that I know are very hardy under a wide range of conditions, will furnish flowers practically from spring to fall and will be just the thing to start your Dream Garden. Of course you will want to add to it later, that is the great fun about having a garden.

I have had some blue prints made suggesting how you can plant this Dream Garden, and I have written special instructions for the care of the plants. If my offer appeals to you just write for the special \$10.00 Dream Garden Offer and the instructions, plan and collection of 66 choice plants will be sent to you, at the next planting season, spring or fall.



HERE IS MY SPECIAL OFFER

I will send, prepaid:—10 CHOICE MIXED HYBRID DELPHINIUMS, from pure white through many shades of blue and purple. 4 feet to 6 feet. The backbone of the Hardy Garden. 5 PHLOX ELIZABETH CAMPBELL, lovely light salmon pink. 5 PHLOX SIEBOLD, orange scarlet, crimson center. 5 PHLOX MISS LINGARD, beautiful pure white and delicate lavender eye. 5 PERSIAN DAISIES (Pyrethrum roseum hybridum). Fernlike foliage and beautiful flowers ranging from pure white through shades of pink to crimson. May to July. 5 GIANT DAISIES (Pyrethrum uliginosum). Covered with white daisies through late summer and fall. 3 to 4 feet. 5 ACHILLEA THE PEARL. Button-like double white flowers from June to August. 5 BABY'S BREATH. Tiny mist-like white flowers during June and July. 5 HEMEROCALIS (Yellow Day Lily). 5 BUTTERFLY WEED (Asclepias tuberosa). Brilliant orange flowers through July and August. 3 IRIS SHERWIN WRIGHT. 2 IRIS GERTRUDE. Beautiful when in flower, foliage effective all summer. 5 ORIENTAL POPPY. Brilliant scarlet. June 1 BLEEDING HEART. The old favorite.

66 PLANTS IN ALL, INCLUDING PLANTING DIRECTIONS AND PLAN OF ARRANGEMENT FOR \$10. EACH VARIETY PROPERLY LABELED.

Toole's Prize Collections Offer the Cheapest, Simplest and Safest Way
To Start Your Hardy Garden This Season

TOOLE'S ROCK GARDEN OFFER

There is a steadily increasing interest in Rock Gardens all over the country. These interesting hardy plants will adapt themselves to widely varying conditions and a very satisfactory rockery may be established even in a tiny back yard, or it may extend to a large size. While we cannot grow all the different kinds here in the central west, there is enough variety available to make this form of gardening very interesting. Probably our hot, dry summers are more harmful than our winters. Because of this a direct south or west slope should be avoided.

Rocks are not needed for the better growth of rock plants as a rule, they merely serve to set off this class of plants to the best advantage. There are two somewhat distinct ways of making rock gardens. One is to take advantage of a natural slope of ground or make an artificial hillside and dot it with stones in such a manner as to provide a backing for the plants. The chief thing to avoid is an appearance of artificiality and sure provision must be made to furnish perfect winter drainage so the plants do not get caught in pockets of ice.

The other style of rockery is that which is frankly a retaining wall or is laid up to appear like a section of natural cliff, or may be used along steps that lead from one garden level to another. Here extra care must be used to so lay the stones that there will be pockets of rich dirt back of the crevices where the plants are set. It is well also to lay the stones so that they slant back against the wall and thus carry back as much water to the roots as possible. Artificial watering will probably be necessary during the hot summer months. For a rockery where the shade is dense, it will be best to depend largely on our Hardy Ferns and some of our native shade loving plants.

ROCK GARDEN OFFER NO. 1

For those who are uncertain as to what to order I have chosen the following collection that you will find very hardy and satisfactory in almost any climate. It may be necessary to substitute some other equally good varieties at times.

Dianthus deltoides (Maiden Pink).
Cerastium tomentosum (Mouse Ear).
Phlox subulata (Moss Pink).
Alyssum saxatile compactum (Gold Dust).
Campanula Carpatica (Carpathian Harebell).
Statice latifolia (Great Sea Lavender).
Tunica saxifraga (Coatflower).
Sedum Spectabile (Stonecrop).
Dianthus caesius (Cheddar Pink).
Campanula persicaefolia (Peachbells).
Gypsophila repens (Chalk Plant).
Sedum Acre (Goldmoss).

ONE EACH OF THESE 12 VARIETIES FOR THE ROCKERY FOR \$2.50, OR FIVE OF EACH FOR \$10. EACH VARIETY LABELED.

Other Tried Toole Selections
 Will be found on the In-
 side Back Cover of this
 Catalog. These are all
 time-tried Collections

ROCK GARDEN OFFER NO. 2

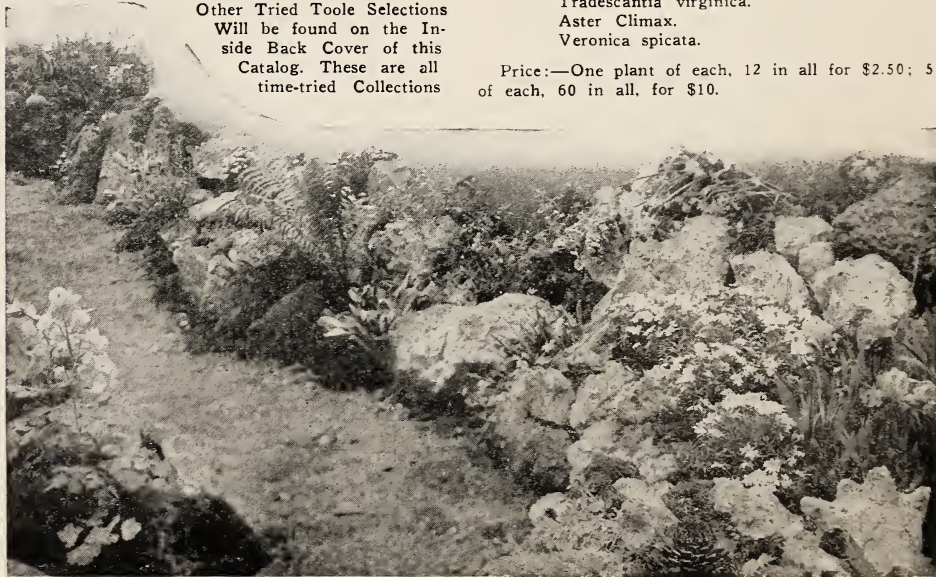
For those who want to start with a larger variety in their rockery, I will send three of each of 25 different kinds of rockery plants for \$10. Order Rock Garden No. 2. Each variety will be labeled separately.

TOOLE'S SELECTION OF A DOZEN BLUE PERENNIALS

There seems to be strong belief that blue perennials are comparatively rare. Here are a dozen blue ones that will supply a succession all summer.

Delphinium bellamosum.
Delphinium belladonna.
Linum perenne (Hardy Flax).
Campanula persicaefolia.
Centaurea montana.
Echinops ritro (Globe Thistle).
Platycodon, blue.
Salvia azurea.
Scabiosa caucasica.
Tradescantia virginica.
Aster Climax.
Veronica spicata.

Price:—One plant of each, 12 in all for \$2.50; 5 of each, 60 in all, for \$10.



A Corner in a Rock Garden

TOOLE'S COLLECTION OF TWELVE PERENNIALS FOR CUT FLOWERS

By planting this collection, selected for cutting, you can have flowers on the table all summer long. This dozen very nearly covers the season from spring to fall.

- | | |
|--|--------------------------------|
| Chrysanthemum leucanthemum (Memorial Daisy). | Delphinium Belladonna. |
| Pyrethrum Hybridum (Persian Daisy). | Coreopsis lanceolata. |
| Shasta Daisy Alaska. | Pyrethrum uliginosum. |
| Gypsophila Paniculata (Baby's Breath). | Heliopsis picheriana. |
| Statice latifolia. | Achillea ptarmica (The Pearl). |
| Gaillardia grandiflora. | Penstemon barbatus Torreyi. |

PRICES:—ONE PLANT EACH OF THE CUT FLOWER COLLECTION, 12 PLANTS IN ALL, \$2.50; FIVE PLANTS OF EACH, OR SIXTY IN ALL, \$10.

TOOLE'S SELECTION OF 12 SHADY NOOK PERENNIALS

It is almost impossible to grow flowers in dense shade, but the following kinds will bloom very well in partial shade. For very heavy shade use the fern collection described on inside of back cover.

- | | |
|---|--|
| Eupatorium ageratoides. | Anemone pennsylvanica (Windflower). |
| Spiraea ulmaria fl. pl. | Forget-Me-Not, Myosotis. |
| Convallaria majalis (Lily of the Valley). | Aquilegia, Long Spurred Hybrids. |
| Astilbe (Goat's Beard). | Sedum (Stoncrop). |
| Aquilegia canadensis (Native Columbine). | Hemerocallis Thunbergii (Late Lemon Lily). |
| Phlox, R P. Struthers. | New England Aster. |

PRICES:—ONE EACH OF ABOVE 12 CHOICE VARIETIES, CAREFULLY LABELED, \$2.50; 5 OF EACH, 60 IN ALL, FOR \$10.

TOOLE'S WET GROUND SELECTION

FOR PLANTING BESIDE POOLS OR OTHER DAMP PLACES

The following varieties are all suited to waterside planting where the soil is too moist for many plants. TWO OF EACH OF THE 6 KINDS FOR \$2.50; 5 OF EACH FOR \$5.

- | | | |
|----------------------|---------------------------|--------------------------------------|
| Boltonia asteroides. | Iris siberica, Blue King. | Ranunculus acris. (double flowered). |
| Iris pseudoacorus. | Lythrum roseum superbum. | Myosotis palustris. |

TOOLE'S COLLECTION FOR A DRY, SUNNY LOCATION

Sometimes the garden, or part of it, must be located in a very dry, sunny location. In addition to the varieties in this collection, all of the Bearded German Iris do well in hot, dry locations. The collection consists of two each of the following varieties, or 12 plants in all, for \$2.50, or I will send five of each kind, 30 plants in all, for \$5. If more varieties are desired I shall be glad to send less of a kind and more varieties that are suitable.

TWO EACH OF ASCLEPIAS TUBEROSA, STATICE LATIFOLIA, SEDUM SPECTABILE, YUCCA FILAMENTOSA, ACHILLEA MILLEFOLIUM ROS-EUM, GAILLARDIA GRANDIFLORA.

MY FRIENDSHIP OFFER

To show my appreciation to those who order to the amount of FIVE DOLLARS or over, I make the following SPECIAL FRIENDSHIP OFFER:—

I WILL GIVE YOU FREE ONE STRONG FIELD CLUMP OF MY WHITE HYBRID DELPHINIUMS, WITH EACH ORDER FOR PLANTS OR SEEDS AMOUNTING TO \$5 OR OVER. This applies to Novelties, Collections or Selections from my regular list, without any exceptions. If you have already purchased some of my White Delphiniums, and would prefer some other plant, you may select any two plants listed at 25 cents each.

FOR EACH ADDITIONAL FIVE DOLLARS' WORTH ORDERED YOU MAY INCLUDE AN EXTRA FIFTY CENTS WORTH OF MY PLANTS OR SEEDS. THIS OFFER HOWEVER, APPLIES ONLY WHEN CASH ACCOMPANIES ORDER.

Again wishing a most interesting and happy Garden Year to my many friends, new and old.

—W. A. TOOLE.

Garry-nee-Dule, Baraboo, Wisconsin.



Forget-Me-Nots



Toole's Pansy Plants

Pansies have long been a specialty with us and we believe our Garry-nee-Dule Strain is distinct in richness of coloring and pleasing form of flowers.

Strong transplanted plants in bud and bloom, April 15 to June 1, and September 15 to November. Mixed colors, 75c per dozen, 50 for \$2.75, \$5.00 per 100.

WM. TOOLE, SR., my new white frilled Pansy, \$1 per dozen; 50 for \$3.50.

HOW TO GROW PANSIES

Pansies love a cool, moist climate and they thrive and bloom best when the nights are cool and even a little frosty at times and the air is not too hot and dry in the daytime. Here in the central west they do best in the spring and fall, in the south, winter is their time of flowering, but in some localities along the seacoast and by other large bodies of water or in the mountains, they may be all summer favorites.

As a general rule, do not plant pansies on a southern slope or on the south side of a building. Probably an eastern exposure is best suited to their needs in this climate (Wisconsin). They will do quite well on the north side of a building if not too heavily shaded. The shade of trees or shrubs is not good because the roots of the larger plants rob the pansies of needed moisture and fertility. If watering is necessary and possible the ground should be soaked in the evening and thoroughly stirred next morning to prevent a crust forming. Frequent cultivation is, more than anything else, the secret of success in pansy growing.

Pansy seed should be sown thinly in shallow furrows not more than one-sixteenth inch deep. The seed bed should be mellow and rich, leveled smooth before the seeds are sown, and after sowing the seeds should be covered evenly and the surface pressed with a thin piece of board. The seed bed should be watered and shaded until the young plants are up, after which they should be gradually accustomed to full light. Shade of the seed bed may be secured by laying laths or pieces of sheeting over some kind of frame about a foot from the ground.

As soon as the plants are up the shading must be gradually removed. Too high temperature in the seed bed is fatal to pansy seeds. If seeds are permitted to dry after they have sprouted their vitality is gone. If covered too deeply they cannot come up. Transplant after plants have attained fourth or fifth leaf and before they become drawn and slender with crowding.

Toole's Famous Pansy Seeds

For half a century Pansies were a specialty with my father, Wm. Toole, Sr., and my earliest recollections are of his beautiful fields of Pansies.

My strains are the result of these many years of painstaking and loving selection of the finest varieties among hundreds of thousands of plants. Our aim is to supply the richest and most beautiful shades and colorings, combined with a pleasing form of flower, heavy, velvety petals, and a sturdy and healthy plant.

GARRY-NEE-DULE MIXTURE. This is a mixture of many colors of Pansies, containing all the following varieties as well as many other choice colors. **PRICES OF GARRY-NEE-DULE STRAIN OF PANSY SEEDS ARE: 300 SEEDS 50c; 1-8 OUNCE, OR ABOUT 3000 SEEDS \$2.50.**

PANSIES (Continued)

WM. TOOLE, SR. This variety is a very distinct and beautiful type among Pansies. The color is pure white, or white with faint pencil markings on the lower petals. The flowers are very round in form and delicately fringed or frilled on the edges of petals. Packet of 200 seeds 50c; 100 seeds for 25c.

HIAWATHA. This is the nearest to a distinct red Pansy we have been able to reproduce so far. The color varies somewhat with varying weather conditions. 200 seeds 25c

MINNEHAHA. Rose pink in color, varying considerably with changing weather. Large flower. 200 seeds 25c.

CYCLONE. Another Toole introduction. A white Pansy with a beautiful lavender border around the outer edge. In some flowers the edge is quite distinct, in others the coloring shades off nearly to the center. 200 seeds 25c.

GIANT BROWN. Peculiar and beautiful shades of tan and brown not approached in color by any other variety of flower. Packet of 200 seeds 25c.

GIANT ADONIS. Light blue, marked with dark blotches. 10c packet.

GIANT BLUE SHADES. Varying shades of blue. 10c packet.

GIANT CARDINAL. Rich cardinal red flower is very distinct and striking. Plant is not a strong grower. 20c packet.

GIANT CECILY. Steel blue with white edge. Dark violet spots on three lower petals. 10c pkt.

GIANT GOLDEN KING. Golden yellow flowers, some clear yellow, some with dark spot on three lower petals. 10c per packet.

GIANT EMPEROR WILLIAM. Dark blue with purple violet eyes. 10c per packet.

GIANT MADAM PERRETT. Wine shades on a ground of yellow and bronze. 10c packet.

GIANT MAUVE. Delicate mauve, lower three petals marked with a large blotch of carmine. 10c per packet.

GIANT MERCURY. Very large self colored blackish purple. 10c per packet.

GIANT ORCHID FLOWERED. Various "art" or pastel shades. 15c per packet.

GIANT RAINBOW. Steel blue margined with white and marked with carmine and yellow. 15c per packet.

GIANT AURORA. Lower petals light purplish rose, with dark spots; upper petals, white or yellow with carmine red aurora-like margin. 20c per packet.

GIANT FIVE SPOTTED. Ordinarily the three lower petals of pansies have a large spot of contrasting color while the two upper petals are without these spots. In this mixture the ground colors are of various shades while every petal is marked with a large dark blotch. 25c per packet.

GIANT SOLFATARE. Light yellow or primrose with large violet spots. 25c packet.

GIANT MASTERPIECE. Large flowers in a variety of shades and colors. The distinctive feature of this variety is the waving or curling of the petals which give the effect of double flowers. 35c per packet.

VIOLA ADMIRATION. Small dark blue flowers. Profuse bloomers. 10c per packet.

VIOLA PAPILIO. Reminds one of our native Bird's Foot Violet. 10c per packet.

VIOLA WHITE PERFECTION. Pure white 10c per packet.

VIOLA RED SHADES. Various shades of rose and red. 10c per packet.

VIOLA SCOTCH MIXED. A small free flowering Pansy. 10c per packet.





Seeds of Perennials

ABOUT GROWING HARDY PERENNIALS FROM SEEDS

Many Hardy Perennials may be grown from seeds successfully if one cares to wait an extra year or so for flowers, and wishes to take the extra trouble involved in growing on the young plants.

It seems to be a general supposition that perennials should be sown from June to August. My experience is that, with few exceptions, the earlier the seeds are sown in the ground the better the results will be. The exceptions are such quick growing kinds as Shasta Daisy, Sweet William, Hollyhocks, and a few others which do better planted in June. Delphiniums may be planted very early in the spring, or late in the summer as soon as the seed has ripened. Aquilegias and Delphiniums will not germinate heavily if a year or more old.

For seed sowing, prepare the soil in an open bed or cold frame. Sow in little furrows not over twice the depth of the diameter of the seed, cover the seed with soil and press down with a board. Make the furrows from two to four inches apart. Water thoroughly but not so heavily as to wash out the seeds. Do this often enough to prevent drying out as a germinating seed is quickly killed by drying. Either shade with cloth or cover over with lawn clippings or grass to check drying out. Remove shade or cover as fast as the seeds come up. Keep weeds out and soil stirred in rows. Transplant when three or four leaves appear, to nursery rows where they will have more room to develop, and to permanent places in early spring or fall.

Alyssum, Arabis, and Poppies are difficult to transplant and may be sown directly in their permanent home.

No.	Packet	No.	Packet
101	<i>Agrostemma coronaria</i> . Single crimson flowers	147	Canterbury Bells (Blue)
05	148	Canterbury Bells (Pink)
105	<i>Alyssum Saxatile Compactum</i> . Bright yellow flowers	149	Canterbury Bells (White)
10	150	<i>Campanula Calycanthera</i> (Cup and Saucer). Mixed colors
110	<i>Anchusa Italica Dropmore Variety</i> . Gentian blue	151	<i>Campanula Calycanthera</i> (Cup and Saucer). White
15	152	<i>Campanula Calycanthera</i> (Cup and Saucer). Blue
115	<i>Anthemis Tinctoria Kelwayii</i> (Golden Marguerite)	153	<i>Campanula Calycanthera</i> (Cup and Saucer). Pink
10	154	<i>Campanula persicaefolia</i> . Waxy white bell shaped flowers on slender stems....
120	<i>Aquilegia Canadensis</i> . Native red and yellow Columbine	155	<i>Campanula persicaefolia</i> , blue flowers....
10	160	<i>Centaurea Montana</i> (Hardy Blue Cornflower)
121	<i>Aquilegia Coerulea</i> (Rocky Mountain Columbine)10
15	166	<i>Cerastium tomentosum</i> (Snow-in-Summer), low growing, greyish, hairy leaves and white flowers
122	<i>Aquilegia Chrysanthea</i> . Golden yellow....	10
15	170	<i>Chrysanthemum maximum</i> (Shasta Daisy Alaska)
123	<i>Aquilegia Nivea Grandiflora</i> . Pure white10
10	171	<i>Chrysanthemum maximum</i> (King Edward)
124	<i>Aquilegia Vulgaris</i> , violet blue10
10		
125	<i>Aquilegia Long Spurred Hybrids</i> . Very choice many colors		
15		
130	<i>Arabis Alpina</i> (Rock Cross). White		
10		
135	<i>Bocconia Cordata</i> (Tree Celandine)		
10		
140	<i>Campanula Carpatica</i> (Carpathian Harebell) blue and white		
10		
145	<i>Campanula Medium</i> (Canterbury Bells). mixed colors		
10		

No.	Packet	No.	Packet
175	.10	235	.10
180	.50	238	.15
181	.50	240	.10
182	.20	241	.10
183	.20	242	.10
184	.15	243	.10
185	1.00	244	.10
190	.10	245	.10
200	.10	256	.10
201	.10	260	.10
202	.10	265	.10
203	.10	270	.10
204	.10	271	.10
205	.10	275	.10
206	.15	280	.10
207	.10	281	.10
210	.10	282	.10
215	.10	283	.10
220	.10	285	.10
225	.10	287	.10
230	.05	288	.25
231	.25	290	.10
		292	.10
		294	.10
		300	.10
		301	.25
		310	.10
		311	.25
		315	.10
		317	.10
		320	.15
		330	.15
		340	.10

TOOLE'S COLLECTION OF PERENNIAL SEEDS \$1.65 WORTH OF SEEDS FOR \$1.00, POSTPAID

For those who want to try their fortune at growing a perennial garden from seed, I have selected a collection of a DOZEN VARIETIES THAT ARE NOT HARD TO GROW, AT THE VERY LOW PRICE OF ONE DOLLAR FOR TWELVE PACKAGES OF SELECTED SEED. No change may be made in this collection at the price quoted. The collection contains ONE PACKAGE EACH OF ANTHEMIS TINCTORIA KELWAYI; CANTERBURY BELLS, mixed; FOXGLOVE, mixed; SWEET WILLIAM, mixed; HOLLYHOCKS, mixed; SHASTA DAISY ALASKA; DELPHINIUM GARRY-NEE-DULE MIXED HYBRIDS; COREOPSIS LANCEOLATA GRANDIFLORA; GAILLARDIA; BABY'S BREATH; PERSIAN DAISY; ROCKY MOUNTAIN SALVIA; ORIENTAL POPPY. VALUE \$1.65—FOR \$1.00 POSTPAID TO YOUR DOOR.



The Garden of Annuals

WHERE IT FITS IN

While there is certain satisfaction in growing perennials that makes them especially dear to one, we cannot get along without all the beautiful Annual Varieties. To complete a color arrangement in the garden at some times of the year, it is often desirable to use Annuals in the Perennial Border, and they are often most useful in filling in vacancies or open spots in the border or Perennial Garden.

Of course there is the Garden of Annuals itself which may be kept entirely distinct from the rest of the garden. Most may be grown in the open ground from seeds, but some will give more satisfaction if started earlier in the greenhouse. It is some of these, together with a few tender bedding plants that are listed below:

ANNUAL GARDEN AND BEDDING PLANTS

STRONG TRANSPLANTED PLANTS

	Each	Doz.		Each	Doz.
AGERATUM, Blue or White10	.75	PANSY PLANTS (Garry-nee-Dule Mix- ture). Per 100 \$510	.75
ANTIRRHINUM (Snapdragon). Mixed or white, yellow or pink, separate10	.75	PARLOR IVY. Rapidly growing green vine for window boxes and baskets15	1.50
ANTIRRHINUM (New Giant Snap- dragon)15	1.50	PETUNIA. Double flowered35	3.50
ASTERS Early flowering, mixed, \$3 per 10005	.50	PETUNIA (Rosy Morn). Single flow- ered, rosy pink, \$6. per 100.....	.10	1.00
ASTERS (Giant Comet). Mixed or sep- arate colors of white, pink, crimson, lav- endar or purple, 100 for \$3.....	.05	.50	PETUNIA (Rosy Morn). 4 in. pots25	2.50
ASTERS (Giant Branching). Sepa- rate colors of white, pink, crimson, lavender and purple or mixed. 100 for \$3.....	.05	.50	PETUNIA (Royal Purple). Single fl.10	1.00
COSMOS. Early, mixed colors05	.50	PETUNIA (Royal Purple). 4 inch pots25	2.50
GERANIUMS. Double, red, pink or white, from 4 in. pots35	3.50	PETUNIA (Giant Flowered). Large throats, many colors, mixed.....	.15	1.50
HELIOTROPE. Medium color, sweet scent, strong, from pots35	3.50	PETUNIA (Giant Flowered). 4 in pots25	2.50
LOBELIA, Blue10	1.00	SALVIA SPLENDENS (Bonfire or America)10	1.00
PARIS DAISY. 4 in. pots35	3.50	SCABIOSA Annual, mixed colors10	1.00
			THUNBERGIA. Vine for boxes.....	.10	1.00
			VERBENA. Mixed colors10	1.00
			VINCA VARIEGATA25	2.50
			ZINNIA. Finest giant varieties, mixed10	1.00
			The modern Zinnia is one of the most popular of Annual Garden flowers. .		

SPECIAL OFFER OF MIXED CHOICE GLADIOLI

In growing a quantity of Gladioli Bulbs we have many from different lots that have had their labels lost. These are often very choice varieties and none are poor. We have placed these in a mixed lot and have added a generous amount of the best named kinds, including some of the choice Primulinus varieties. These are offered at a low price for those who want to plant liberally for summer cut flowers. The bulbs are all of flowering size and will give a great variety for several weeks. 50 BULBS FOR \$1.25; 100 FOR \$2; OR \$18 PER 1000, CARRIAGE PREPAID.

Gladioli

Gladioli are among the easiest and most satisfactory plants to grow, as they succeed under a wide variety of conditions, and complete failure is very rare. For cut flowers they are unsurpassed, and they are also useful to plant in the Perennial Border to fill in open spaces. By planting bulbs about ten days apart from April to the middle of June, a succession of flowers may be had for a long season.

All bulbs offered are strong flowering size, but vary somewhat according to variety.

The following kinds are all varieties that have been tested and have proven the most popular of their respective types.

	Each	Doz.
AMERICA. Soft lavender pink05	.50
ALICE TIPLADY (Prim) rich orange10	1.00
ANNA EBERIUS. Dark velvety purple10	1.00
ARIZONA. A pleasing rose pink10	1.00
BARON HULOT. Deep indigo blue10	1.00
CHICAGO WHITE. White, lavender marking in throat10	1.00
DR. NORTON. Cream and white10	1.00
EARLY PINK. A very early light pink10	1.00
EMPRESS OF INDIA. Rich dark maroon15	1.50
EVELYN KIRTLAND. Rosy pink on edges fading to shell pink at center, scarlet blotches on lower petals10	1.00
FLORA. Delicate clear pale yellow, without spots10	1.00
GIANT WHITE. Very large flowered white10	1.00
GRETCHEN ZANG. Large pink flowers shading into scarlet on lower petals10	1.00
HALLEY. Delicate salmon pink, lower petal, with creamy center05	.50
HERADA. Clear pure mauve10	1.00
IDA VAN. Bright red10	1.00
I'MMACULEE. Pure white15	1.50
LE MARSHAL FOCH. Rose pink15	1.50
LUCETTE. White tinted orchid20	2.25
MAIDEN BLUSH (Prim) deep pink15	1.50
MRS. FRANCIS KING. Bright vermilion scarlet05	.50
MRS. FRANK PENDELTON. Flushed salmon with rich maroon blotches on three lower petals. Very popular10	1.00
MR. MARK. Light blue, deeper throat25	2.50
NORWALK. Scarlet, yellow throat25	2.50
OPALESCENT. Pale rose lavender50	.50
PANAMA. Deeper color than America10	1.00
PEACE. Nearly white, pale violet penciling on lower petals10	1.00
PRINCE OF WALES. Large salmon pink, tips shaded buff10	1.00
PRIORITY. Venetian pink50	.50
ROSE 1910. One of the most popular of recent introductions. A clear deep rose pink10	1.00
SCHWABEN. Clear sulphur yellow, very pleasing10	1.00
VANITY. Pink on cream ground25	2.50



	Each	Doz.
WAR. Blood red10	1.00
WHITE KING. Cream white with ruffled edges10	1.00
WILBRINK. Delicate pale pink10	1.00
YELLOW BIRD. Yellow with red mark at throat10	1.00
CHOICE MIXTURE. This is a very good mixture of many of the best named varieties of Gladiolus, per 100 \$305	.50

PRIMULINUS MIXED. The Primulinus Hybrids are smaller flowered than the large flowered class, are earlier in flowering and the stalks are more slender. As a general rule flowers run to yellow, tan, apricot, etc., per 100 \$2 .05 .50

The "art" shades of Primulinus Gladioli are beautiful when cut, if arranged with Delphiniums or Zinnias.

MONTBRETTIA. Something like a tiny gladiolus, with orange red flowers. Bulbs 6c each; 60c dozen.

INDEX

	Page		Page
Achillea	5	Echinops	10
Adam's Needle	18	Eryngium	10
Alyssum, Perennial	5	Eupatorium	20
Anchusa	5	Euphorbia	21
Anemone	19	Evening Primrose	13
Annual Plants	30	Ferns	22
Anthemis	5	Flax, Hardy	13
Aplectrum	19	Flowering Spurge	21
Aquilegia	5-20	Foxglove	10
Arabis	5	Forget-me-not	13
Arenaria	6	Friendship Offer	25
Arisaema	20	Funkia	10
Armeria	6	Gaillardia	10
Artemisia	3-6	Gardener's Garter	11
Asarum	20	Gentian	21
Asclepias	20	Geranium	21
Asters, Hardy	2-6-20	Giant Daisy	8
Astilbe	6	Gladiol	31
Baby Delphinium	9	Globe Thistle	10
Baby Phlox	15	Goat's Beard	18
Bachelor's Button	17	Golden Marguerite	5
Badger	7	Golden Glow	17
Balloon Flower	17	Goldentuft	5
Baptisia	6	Goldmoss	17
Beard Tongue	14	Goodyera	21
Bellwort	22	Great Sea Lavender	18
Black Eyed Susan	17	Greek Mallow	18
Blanket Flower	6	Gypsophila	10
Bleeding Heart	6	Hardy Ferns	22
Blue Bells	20	Hardy Grass	10
Blue Collection	8	Hardy Lilies	13
Bocconia	6	Harebell	7
Boltonia	7	Helianthus	11
Buddleia	7	Hemerocallis	11
Bugloss	5	Hepatica	21
Buttercup	17	Heuchera	11
Butterfly Weed	6-20	Hollyhock	11
Caltha	20	Houseleek	18
Campanula	7	Iris	11
Canterbury Bell	7	Jack-in-the-Pulpit	20
Carpathian Harebell	7	Jacob's Ladder	21
Catnip	13	Lady Slipper	20
Centaurea	7	Larkspur	2-8
Cerastium	7	Lathyrus	12
Cheiranthus	7	Leopard's Bane	10
Chinese Lantern	17	Lilies	13
Chives	7	Lily-of-the-Valley	8-12
Chrysanthemum	8	Linum	13
Clematis	7	Liverleaf	13
Coatflower	18	Loose-Strife	13
Columbine	5	Lupines	13
Collections	23	Lychnis	13
Convallaria	8	Lythrum	13
Coneflower	17	Lysmachia	13
Cornflower	7	Maltese Cross	13
Coralbell	11	Memorial Daisy	8
Coreopsis	7	Mertensia	21
Cut Flower Collection	25	Michaelmas Daisy	6
Cyripedium	20	Monarda	13
Daisy, Michaelmas	6	Moonpenny Daisy	8
Daisy, various	8	Moss Rose	3
Day Lily	11	Myosotis	13
Delphinium	2-8	Myrtle	18
Dianthus	2-9	Nepeta	13
Dicentra	6	Oenothera	13
Digitalis	10	Oswego Tea	13
Dodecatheon	20	Pansy Seeds and Plants	26
Doronicum	10	Papaver	14
Dream Garden Collection	23	Peach Bells	7
Dry Ground Collection	25	Penstemon	2-14
		Peonies	14
		Perennial Pea	12
		Perennial Seeds	28
		Persian Daisy	2-17
		Phlox	15
		Physalis	17
		Physostegia	17
		Pinks	9
		Plantainlily	10
		Podphillyun	21
		Polemonium	17
		Poppy, Hardy	14
		Pyrethrum	2-17
		Ranunculus	17
		Rockery Collection	24
		Rock Soapwort	17
		Rose Loose-Strife	13
		Rosy Milfoil	5
		Rudbeckia	17
		Salvia	17
		Sanguinaria	22
		Saponaria	17
		Scabiosa	17
		Sea Holly	10
		Sedum	17
		Seeds, Perennial	28
		Sempervivum	18
		Shady Nook Collection	25
		Shasta Daisy	8
		Shooting Star	20
		Siberian Wallflower	7
		Sidalacea	18
		Snapdragon	3
		Sneezewort	5
		Snow-in-Summer	7
		Southernwood	6
		Soapwort	17
		Speedwell	18
		Spiraea	18
		Spiderwort	22
		Stachys	18
		Statice	18
		Stone-Crop	17
		Summer Lilac	7
		Sundrops	13
		Sunny Spot Collection	25
		Sunflower	11
		Sweet William	9
		Tanacetum	18
		Thalictrum	22
		Thermopsis	18
		Tickseed	7
		Tradescantia	22
		Trillium	22
		Tritoma	18
		Tunica	18
		Uvularia	22
		Valerian	18
		Veronica	18-22
		Vinca	18
		Viola	3-22
		Wake Robin	22
		Wet Ground Collection	25
		White Delphinium	2
		White Mugwort	6
		White Snakeroot	10
		Wild Indigo	8
		Yarrow	5
		Yucca	3-18

TOOLE'S FLOWER SHOP AT BARABOO

Toole's Flower Shop serves the people of Baraboo and the surrounding towns with fresh cut flowers and flowering plants grown at Garry-nee-Dule. It is owned and operated by W. A. Toole.

Should you desire to have a flowering plant or cut flowers delivered to friends or relatives in or not far from Baraboo, write or wire us and we will fill your order, or, better still, see your own Florist, who is a bonded member of the Florists' Telegraph Delivery Association, and he will gladly forward your order to me without extra charge.



A FERN BED OF 26 CHOICE PLANTS FOR \$5.00

I am offering for \$5.00—8 OSTRICH PLUME, 10 LADY FERNS, AND 8 CLAYTON FERNS. ONE HALF THE ABOVE ASSORTMENT FOR \$3.

These three Ferns represent three distinct types and will make a splendid combination as a background for many varieties of perennial flowers in the open or half shaded places. When once planted they will come back stronger from year to year if reasonable care is given. They will grow in common garden soil which can be improved by the addition of leaf mould or pulverized peat. Plant these ferns 12 to 13 inches apart and give them a thorough soaking to settle the soil around the roots, and mulch to preserve moisture. On arrival give them a good watering and keep them moist. The planting season runs from October 1st to June 1st. Fall planting gives the soil a chance to settle around the roots which will insure stronger growth the first year.

A WILD FLOWER GARDEN FOR THE SHADY NOOK

Flower lovers are often puzzled to know what to plant in the shade on the north side of the house or some other shady place. With a little care this makes an admirable place for a Wild Garden. The greatest trouble is that the soil is often very poor, being the dirt thrown out from the cellar excavation. In a case of this kind it is desirable to add leaf mould or other organic matter to loosen the soil. Another trouble with planting on the north side of the house is often that this side of the building is protected from the prevailing rains during the summer and the soil will be too dry at times without watering.

This garden is chosen to give some show from spring to late summer. It includes the following:

6 LADY FERNS; 6 OSTRICH FERNS; 3 WILD COLUMBINE; 3 WILD GINGER; 3 NEW ENGLAND ASTER; 3 YELLOW LADY SLIPPER; 3 WHITE EUPATORIUM; 6 HEPATICA; 6 PHLOX DIVARICATA; 3 POLEMONIUM REPTANS; 6 TRILLIUM; 6 UVULARIA; 2 CLOSED GENTIAN; 6 YELLOW VIOLETS. 62 PLANTS IN ALL FOR \$10.00.

MY SPECIAL OFFER ON PEONIES

If you want three kinds of choice Peonies, at a SPECIAL PRICE, try this SPECIAL OFFER:
FESTIVA MAXIMA, white, regular 60c each. **MONS JULES ELIE**, shell pink, regular \$1.50 each.
FELIX CROUSSE, red, regular 75c each.

Strong 2 to 3 eye Divisions, 1 each of the above, 3 kinds, \$2.50; 3 of each, \$7.

Or if you want some good Peonies for planting effect and do not care for the names we can supply either white or pink colors at 35c each, \$3.50 per dozen; Red, 50c each, or \$5 per dozen. All good strong 3 eye divisions.

A SEED COLLECTION FOR THE ROCKERY

A DOLLAR VALUE FOR 75 CENTS

The following ten varieties are not difficult to grow from seed and will give a wonderful start for the Rockery. \$1.00 VALUE FOR 75 CENTS. One regular packet of each of:

Alyssum Compactum.
 Campanula carpatica.
 Cerastium tomentosum.

Dianthus deltoides.
 Linum perenne.
 Papaver nudicaule.
 Arabis Alpina.

Platycodon grandiflorum.
 Saponaria ocymoides.
 Tunica saxifraga.



"How many flowers are gently met
Within a garden fair."—George Sterling.

This is the Catalog of
W. A. TOOLE, of Garry-nee-Dule
Baraboo, Wisconsin