

Historic, Archive Document

Do not assume content reflects current scientific knowledge, policies, or practices.

62.07

Taylor's 1930 Flower and Plant Guide

MAR 17 1930
U.S. DEPARTMENT OF AGRICULTURE

*"It's Not
a Home,*

*Until It's
Planted"*



BEFORE PLANTING



AFTER PLANTING

Taylor's Greenhouses

Plants, Evergreens, Shrubs, Cut Flowers

304 Lincoln St. Telephone 326 Russellville, Ark.

Read Carefully Before Ordering

Remittances should be made with each order. Make them the way that is most convenient with you. Personal checks are good if you have the cash in the bank to cover it.

MY GUARANTEE—Everything entirely satisfactory and as good or better than represented or you may return at my expense and receive all money you have been out.

OUR MOTTO—"Quick service; a square deal to all." It is plants we ship, not mere promises.

SUBSTITUTING—If temporarily out of any variety, we will substitute another equally as good unless you state—Do Not Substitute.

PRICES—We request that you compare our prices with others. The more you investigate the better you will be pleased. A trial is all we ask.

HOT BED PLANTS—Have no soil on the roots, therefore will be much cheaper than pot plants.

POT GROWN—Are grown in small flower pots and mailed postpaid to the customer with the ball of earth on them, which is matted together with roots. All our flowering plants are pot grown, unless stated otherwise.

PERENNIALS—Plants that are hardy or will grow outside and bloom from year to year.

ANNUALS—Plants that reach their best the first year and must be planted again each year.

REFERENCE—Bank of Russellville, Russellville, Arkansas; American Railway Express Company, Russellville, Arkansas.

NO SUNDAY BUSINESS WHATEVER, EXCEPT FLOWERS FOR FUNERALS.

ARKANSAS STATE PLANT BOARD CERTIFICATE OF NURSERY INSPECTION

Office of the Chief Inspector, Little Rock, Ark.

1920-1930

No. C-27

Issued October 25, 1929

This is to certify that, in accordance with the provisions of the Arkansas Plant Act of 1917, the nursery and premises thereof belonging to W. V. Taylor of Russellville, Arkansas, have been inspected by a duly authorized inspector and were found to be apparently free of injurious insect pests and plant diseases, and that, as a condition of the issuance of this certificate, the owner or operator of such nursery has agreed to comply with such requirements as the Chief Inspector has prescribed for the elimination of infested or diseased trees or plants, and has further agreed not to dispose of any nursery stock unless it is covered by a certificate granted by the Chief Inspector of the Arkansas State Plant Board.

This certificate is not transferable and may be revoked for cause.

This Certificate Expires September 1, 1930.

PAUL H. MILLAR, Chief Inspector.

Taylor's Choice Roses

These Pot Grown Roses May Be Planted Successfully any Time From Now Until the End of June.

Taylor's Roses are everblooming, Pot Grown and Sent Postpaid.

The ideal garden has many Roses in it. Roses here, and there, and everywhere. There cannot be too many of them. They will bloom well, comparatively speaking, in ordinary soil, but must be given very rich soil if you want them to do their best. Work plenty of old manure in soil and grow specimens. The Rose likes heavy soil; it prefers clay loam instead of sandy loam. For best results, cut back heavy.

(All varieties are monthly or everblooming except those marked with a *)

JOSEPHINE VESTAL—In this magnificent Rose we find a rose of attractive coloring. It might be described as a salmon-flesh tinted rose, with a touch of yellow at the base. Buds of unusual attractiveness, opening full and double, unusually long and beautifully pointed petals of wonderful depth and substance. Very fragrant, growth strong, almost thornless, flowers on long stems, and in great profusion all summer. Grand for outdoors. 30c each.

CITY OF LITTLE ROCK—Surprisingly beautiful. It is distinct and beautiful in color, a rose pink. The buds which open perfectly are long and ideal form. The growth is vigorous and the flowers are produced profusely. Its pronounced fragrance will attract all Rose lovers. Price, 20c.

BABY DOLL, OR TIP TOP—Blooms, golden yellow. Beautifully, small, delicate. Price, 15c.

MABEL DREW—The color is a deep cream in the young state, to intense canary-yellow in the center as the flower develops. Price, 20c.

JOHKHEER J. L. MOCK—Large flowers, erect stems, heavy foliage, quick growth, rich pink; a rose among roses. This is one of our favorites. Price, 20c.

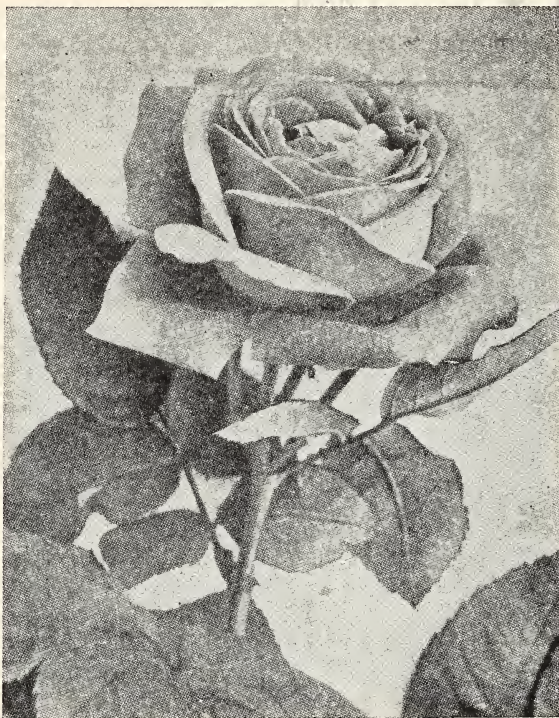
KAISERINE AUGUSTA VICTORIA—White; a real rose. Price, 20c.

CLOTHILDE SOUPERT—A fine bedder, produces large quantities of medium-sized roses; the color effect is beautiful; ivory white, shading toward center to a bright silvery pink; everybody's rose. Price, 15c.

SOUVENIR DE PIERRE NOTING—Beautiful long bud, large blooms; orange yellow bordered, with carmine rose. Price, 15c.

CLIMBING COLUMBIA—A hardy, ever-blooming pink climbing rose. Buds and blooms immense size; borne on long stems for cutting. Petals large, color clear, imperial pink. Many have been wanting this rose. Each, 25c.

CLIMBING OPHELIA—Same as Ophelia, only climbing. Price, 20c.



NATIONAL EMBLEM—Buds large, long and pointed; very beautiful; flowers freely and continuously all season. Double. Color, dark crimson. Price, 20c.

OPHELIA—Strong growth; flowers on long stems; attractive buds; rich shade salmon flesh shaded with rose. Price, 20c.

KILLARNEY—Very fine; pink; everblooming. Each, 20c.

AMERICAN BEAUTY—Red; enough said. Price, 30c.

CLIMBING OPHELIA—Same as Ophelia, only climbing. Price, 20c.

PINK MAMAN COCHET—This superb Rose is well known as a queen among Roses, one of the best and most beautiful varieties ever grown, and quite hardy. The flowers are of enormous size, very full and of great depth and substance. Color, rich coral-pink, elegantly shaded with rosy crimson; has broad, thick, shell-like petals and makes superb long-pointed buds. Price, 20c.

MME. BUTTERFLY—Bright pink, apricot and gold. Price, 15c.

COLUMBIA—Flowers are very large, being a giant pink. A rank grower. Blooms with great freedom. Buds are borne on long stiff, straight stems. Very fragrant. Fully double. Fine for garden culture. Price, 20c.

ALEXANDER HILL GRAY—Pure yellow. Large full flowers with high pointed centers. Free producer; robust, vigorous and erect. Price, 15c.

SUNBURST—This giant yellow rose is a fine forcer; ranks high in its class; color, orange copper; everblooming. Another favorite. Price, 15c.

BRIDE—Pure white under glass, taking on a delicate pink tinge out of doors. Forces well and produces abundantly for cut flowers. Price, 15c.

BRIDESMAID—Clear, shining pink; buds of exquisite shape; stems long and stiff; a profuse bloomer. A leader of pink forcing Roses since 1893, and likewise an outdoor favorite. Price, 15c.

CRUSADER—Strong growing variety. Blooms big and double. Color, a rich velvety crimson. Flower stems are strong. A good grower and free bloomer. Price, 20c.

SENSATION—An entrancing shade of red; stems long and pointed. Heavy foliage; stands among the best roses. Price, 25c.

WILLIAM R. SMITH—Creamy white with shading of pink; a seedling from Maman Crochet and Kalsérine Augusta Victoria; beautiful in form and color; glossy foliage; long stiff stems; vigorous growth. Price, 15c.

HELEN GOOD—Helen Good is a genuine Cochet, being a sport from Maman Cochet. It is identical in foliage growth, size and shape of flower, different only in color. It is a delicate pink, fully distinct from Maman Cochet. Price, 20c.

FRANCES SCOTT KEY—Some flowers have as high a sixty petals and sometimes more opening to a very high center; color is a magnificent red. Is very easy to cultivate and requires little care. Price, 20c.

COMMON WEALTH—This new Rose has large, long pointed buds, borne singly on medium strong stems. Color, an even deep pink, would be called a solid color. A vigorous grower, delightfully fragrant. Price, 25c.

CLIMBING SUNBURST ROSE—The same as Sunburst, except this is a climbing. One of the finest climbing yellow Roses. Price, 20c.

RED RADIANCE—Hardy, free bloomer, vigorous grower, large, double red blooms. Price, 20c.

PINK RADIANCE—Giant flowering, fine buds, very double; fine for cut flowers. Price, 20c.

J. B. CLARK—Deep scarlet, shaded blackish crimson; large, beautiful flowers. Price, 25c.

***CLIMBING AMERICAN BEAUTY**—Color, a rich glowing crimson. Same color and qualities as the American Beauty, only this is a climber. Price, 20c.

FRAU KARL DRUSCHKI—"White American Beauty." The distinctive form and expression of its bud, half open state and maturity, are a three-fold revelation of exquisite charm and beauty. They commence blooming with the June Roses, are conspicuous throughout the summer with their large flowers of waxy paper white, and yield their last arnful with the first snows of any fall. Price, 25c.

DARDANELLE—Well shaped buds of cherry red, grand in size, the expanded flowers changing to a pretty shade of cherry rose, sweetly scented. Dardanelle is a novelty of the greatest merit and we are certain that it is destined to become a great popular favorite. Apart from the glorious color it has all the good points we expect to find in a good garden Rose. Price, 30c.

LA FRANCE (Pink) No variety can surpass it in delicate coloring—silvery rose shades, with pink. It has a satin sheen over all its petals. It is hardy beyond question. It blooms continuously. The flower is large, finely built, endures for a great length of time, is exquisitely colored and fragrant in the highest degree. Price, 20c.

HELEN GOULD—This is a grand Rose of the very highest merit for the garden; bright watermelon-red; very free grower and bloomer. Price, 20c.

***PAUL NEYRON**—Largest of Roses, blooms two or three times a year. Color, pink, shading to rose, most beautiful in the massiveness of the blooms. Very fragrant with mild touch of apple blossoms. The rose is very strong and vigorous and is considered by Rose growers as being among the six Roses of the world best suited for outdoor planting. Price, 20c.

BASKET COLLECTION NO. 1

One Boston Fern, two Parlor Ivies, two Wandering Jews, one double Geranium, one Variegated Vinca, one Coleus, one Weeping Lantana, three other plants, our selection. Total value \$1.35. Special price, 90c.

BASKET COLLECTION NO. 2

Two double and one single Geranium, two Boston Ferns, two Feather Ferns, two Ivies, four other plants, our selection. Total value, \$1.60. Special price, \$1.20.

BASKET COLLECTION NO. 3

Four Coleus, four Jews, four Ivies, four Ferns, two Vincias, two Geraniums, two Lantanas, and five other cuttings and plants, all our selection. Total value, \$2.70. Special Price, \$2.00.

PORCH BOX COLLECTION

FOR SUNNYSIDE

Two Geraniums, two Variegated Vincas, two Wandering Jews, two Verbenas, four Salvia, two Coleus, two Lantanas, four Petunias (mixed), two Acalypha, two Ivy. Total value \$2.35. Special price, \$1.80.

PORCH BOX COLLECTION

FOR SHADY SIDE

Two Norwood Ferns, two Boston Ferns, one Plumosa, one Sprengeri, four Ivies, four Coleus, two Begonias, two Artillery Plants, two Cigar Plants, two Wandering Jews, two Strawberry Geraniums. Total value, \$2.85. Special price, \$2.25.

HANGING BASKETS

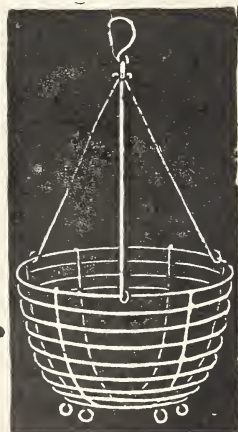
—We believe this to be the best wire hanging basket on the market today. You can either hang it up or set any place you may desire. We have baskets twelve inches in diameter for 50c; fourteen inches, 55c.

GREEN SHEET

MOSS

For lining the baskets, enough for twelve-inch basket, 15c; fourteen-inch basket, 20c, postpaid.

Remember we pay the delivery charges — Postage, Express, Freight.



Taylor's Geraniums

TAYLOR'S CHOICEST GERANIUMS

LARGE DOUBLE

Price, 15c each; three for 40c; six for 75c; dozen, \$1.25. Assort as you like.

IRVINGTON BEAUTY—Words fail us in describing this peer of all bedding and pot Geranium. Of a branching habit, every branch producing as **immense truss** of rosy, salmon-pink bloom. A four inch pot plant often showing five to seven large perfect trusses. It is just as fine for bedding as for pot culture and the most persistent bloomer in the Geranium family. **New Geranium, 20c each.**

PINK BARNEY—The best double pink color, bright rosy-pink with distinct white blotch in center. A free bloomer.

LANDRY—Distinct salmon pink shading to scarlet; enormous blooms. Will stand extreme heat.

RADIO RED—Darkest and richest Geranium grown. It is a very bright dark, deep, rich velvety maroon, an excellent bedder and a perfect pot plant.

DUKE DE MONTMART—This is nearest to the blue geranium. It is more strictly speaking a rich purple; a striking color.

ALPHONSOE RICARD—A most beautiful shade of bright vermillion, large flowers and enormous trusses a grand variety.

AMERICAN BEAUTY—Flowers light red color; large and double; fine for pots or bedding.

S. A. NUTT (Queen of Crimson)—Said to be the best dark red bedder; a great bloomer; double. A great favorite.

BEAUTE POITEVINE—A beautiful variety, with large double flowers of a bright salmon pink; very fine.

BUCHNER—Plants bushy, large flowers; pure white; fine for pot or bedding.

JEAN OBERLE—One of the most beautiful among the colors; known as peach or hydrangea pink. Plants strong and free bloomers.

JEAN VIAUD—Among the best large flowering double pink geraniums, color rich deep pink, shading near the base of petals to light pink.

HELEN MITCHELL—Clear, brilliant scarlet. One among the best.
The above are all double.

MRS. E. G. HILL—A good single geranium and a profuse bloomer of a soft, light salmon; each petal bordered with rose salmon.

IVY-LEAVED GERANIUMS—Very fine for baskets, either trailing or climbing. Color, pink, salmon, red. State color wanted.

STRAWBERRY GERANIUMS—Leaves nearly round and striped freely with silver bands. Blooms white. Easily grown. Does well in sun or shade. Does not resemble the Geranium. 10c each, three for 25c; fine for baskets.

SWEET SCENTED GERANIUMS—Nutmeg, lemon and rose are the three different varieties. 15c each, or two for 25c.



Eben E. Rexford, in his book on flower culture, states as follows: "If I were asked to name the one flower best adopted to general culture I would unhesitatingly name the geranium as the flower. It is of easy culture. All that is asked is good soil, enough water to keep roots moist, but never wet, sunshine, and away from frost."

Geraniums will not stand much water, neither will they bloom well in a large pot.

See inside cover.

EASTER GREETINGS

NEW EVERBLOOMING PELARGONIUM

Flowers large and free blooming; amaranth red; each petal marked with a large black blotch. A fine variety to grow, on account of its long blooming season. **Price, 20c.**

SULTAN'S-IMPATIENTS

(Zanzibar Balsom.)

Almost a constant bloomer. Has blooms about the size of a half dollar. Salmon pink, white and red. (Give very little water; too much water will rot the plant off.) **Price, 10c each, three for 25c.**

BANANA ORINOCO

An interesting plant to grow. Planted in the spring in a sunny, well watered location will grow first season to a height of 10 to 12 feet. Leaves about six feet long. A great novelty to see growing. Very ornamental. Two-year-old plants, sometimes produces a bunch of bananas. We very often have bananas growing in our yard. **Good plants, 50c and \$1.00.** Store in cellar over winter; will keep without sun or water, if away from frost.

TAYLOR'S CHOICE BEGONIAS

(ALL POT GROWN)

CORALLINA LUCERINE—Bright coral red, changing to delicate pink. The foliage is dotted with silvery white; will stay in bloom for months. Sure to please. Fine plants only 20c.

THURSTONII—The flowers are a beautiful deep pink in bud, but when fully expanded become a beautiful shell pink. Leaves large and polished or emerald green color, blood red underneath. Very showy. Price, 20c.

ARGENTEA GUTATA—Purple bronze leaves with silver markings. White flowers; fine plants. 15c each.

RUBIA BEGONIA—The Rubia is one among the best Begonias; has dark glossy green leaves; makes a wonderful house plant; free bloomer. The flowers are scarlet rose color. Price, 20c.

METALLICA—The Metallica Begonia has large hairy leaves with metallic luster; blooms are pink. Price, 20c.

BEEFSTEAK BEGONIA (called by some the Strawberry Leaf Geranium)—The leaves have silver top, red underneath. Very ornamental. Flowers, pink. Nice plants, 15c each, larger one, 25c.

BEGONIAS (known as the Everblooming Varieties)—Very fine for bedding out or for pot plants. They are great bloomers, almost perpetual. Small foliage, glossy green, turning to a purplish bronze. State color, red or pink, 18c each; 2 for 35c; 6 for 95c.

REX BEGONIA—Our Rex Begonias are the most beautiful of foliage plants, with beautiful colored leaves of enormous size, making an unequalled house plant; sure to please. Price, 25c.



FUCHSIAS

(Ladies' Ear Drops)

Will grow in almost any soil, but does best in a light, open, spongy one. It must be well watered. Do not allow the roots to become dry. A daily shower on its foliage will be a great help. It likes the morning sun or will do well in a partial shade. Never expose to the hot mid-day or afternoon sun. All pot grown.

BLACK PRINCE—One among the very finest Fuchsias grown for the beginner. It makes a shapely bush; robust in growth. Blossoms of a beautiful, waxy carmin or pink color. 15c each, two for 25c.

SPECIOSA (known as the Winter Bloomer)—Color, rich carmine and rose. Remarkable for its bright glossy green leaves. Price, 15c, two for 25c.

PHENOMENAL—The largest flowering Fuchsia. Tall growing, branching like a tree, with dark glossy green leaves. Sepals bright scarlet with rich violet, purple corolla. Nice strong plants, 15c.

MADAGASCAR, PERWINKLE, OR VINCA

Blooms the entire summer season, growing about two feet high; very bushy. Good for growing in pots and better for borders or beds. The more you plant, the better you like them. Pot grown plants, 10c each; per dozen, 90c.

MARIGOLD (Annuals)

These flowering plants are becoming very popular; these particular varieties are fine for cut flowers; tall African; mixed colors; long blooming season; double. Pot grown plants, 6c each; 6 for 25c; 12 for 45c; Dwarf African, double mixed. Price, 6c each; 6 for 25c; 12 for 45c.



WATER HYACINTHS

Fill bowl about half full of good soil. Pour in water until it will stand two or three inches deep. Place the lower ends of the roots in soil and let plants float in water. Has fine blooms, borne on spike of bluish color. Price, 15c; two for 25c.

DECORATIVE FERNS

ALL FERNS ARE POT GROWN

More Ferns are killed by watering than from lack of it. When soil is sticky, do not water. When soil is dry, water thoroughly. The best way is, stand pot in basin of water 15 minutes. Watch for the very small white specks on underside of leaf near base of stem, for this spray with Shep, enough Shep to make 4 gallons of spray for 40c.

WHITMANII (Ostrich Plume Fern)—More of a dwarf habit than the Boston Fern. The fronds are of entirely different nature. Each frond is subdivided on the order of the Compacta Fern, thus producing a very beautiful effect. Its decorative ability is excellent. Price, 15c.

SPLENDIDA ("The Big Four Fern")—A decided novelty. It combines the good qualities of the four most popular sorts—the grace of the Boston, wavy effect of Roosevelt, fluffy effect of Ostrich Plume, and the uniqueness of the Fish Tail. Price, 20c; three for 55c.

NORWOOD FERN (Fluffy Ruffles)—A dwarf compact fern similar to the Ostrich Plume, carrying its fronds stiff and erect. Makes an ideal specimen. A favorite of mine. Good plants, at 20c; three for 55c.

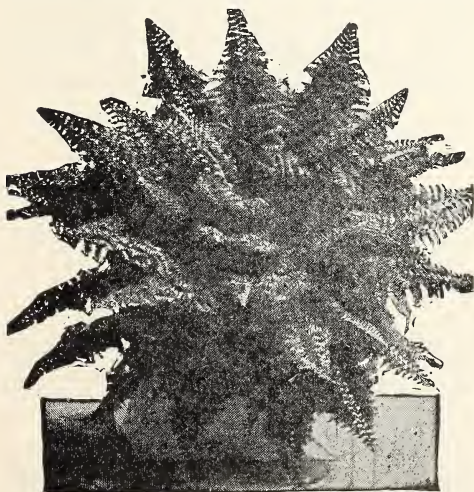
NEPHROLEPIS SPARROWII FERN—We are glad to offer our customers this new variety. Quite robust, rapid and easy grower, can be grown with success by the amateur; dark green foliage, beautiful crested fronds. Price 20c; 3 for 55c.

SCOTTIE ("The Newport Fern")—It is a rapid grower and to see it in all stages of growth from a runner in the bench to a pot specimen. Will convince you of the demand as a house fern. Price, 20c; 3 for 55c.

SMITHII FERN (Baby Breath)—An improvement over the Ostrich Plume; compact; form fronds on wiry stems. Very attractive. A popular variety. Price, 15c.

NEW FERN (John Wanamaker)—This new fern is quite distinct from other ferns, growing rapidly, making an abundance of long, narrow drooping, making an abundance of long, narrow drooping fronds. This is a very durable house fern. Price, 15c each.

FEATHER FERN (Asparagus Sprengeri)—The plants are rapid growth, grow freely all year, producing large sprays. Fine for window boxes or hanging baskets. A fine house plant. Foliage used for cut flower work or in bouquets. Keeps fresh a long time. Price, 15c each.



WHITMANII COMPACTA FERN



Lace Fern

LACE FERN (Asparagus Plumosus)—Graceful bright green leaves of delicate form and unusual beauty. A fine house plant. Thrives under all conditions. The foliage cut and put in water will hold its shape and color for weeks. Price, 15c each.

TEDDY JUNIOR—New dwarf fern, said to produce nearly four times as many fronds as any other fern introduced; fronds are broad and tapered from base to tip. Price, 15c each.

BOSTON FERNS—An old stand-by that is hard to beat. Has long, graceful drooping fronds. Grows very large and is very popular. Price, 15c.

COMPACT SWORD FERN—Resembles the Boston, only is more dwarf and more erect and darker shade of green gracefully arched. A good house plant. Price, 15c.

COLEUS

These are all fine for bedding and as specimen pot plants during the winter. They are wonderfully attractive. I do not know of a finer foliage plant than the Coleus. Keep well sprayed with Shep to kill the white cotton-like bugs. Enough Shep to make four gallons of spray for 40c. Postpaid.

NEW PRESIDENT HARDING COLEUS—Bright red leaves, with brown, green-yellow edging. A real beauty. Only, 15c.

TRAILING QUEEN—A free, rapid and easy grower. Elegant fringed leaves, blending from pink to crimson, bordered with chocolate markings. 10c each; three for 25c.

CHRISTMAS GEN—Very broad leaves; bright crimson, marked with yellow. Sure to please. Price, 15c each; three for 40c.

NEW GIANT RAINBOW (Christmas Queen)—Long leaf, richly colored. Many colors, ranging from dark velvet to pink, yellow, brown and green. A winner. Price, 15c each; 3 for 40c.

DEFIANCE—New; fine leaves, bright yellow about one-half of surface, in center bright velvety crimson. Price, 15c each; three for 40c.

MANY VARIETIES MIXED—10 each, three for 25c; dozen, 85c.

ALYSUM

A fine small growing plant for borders or beds. White. Price, pot grown plants, each, 5c; per dozen, 50c; hot bed plants, 20c dozen; two dozen 35c.

We Pay Delivery Charges



Caladium Esculentum

A most effective plant for the flower border or for planting upon the lawn. To obtain the best results it should be planted in rich soil, well supplied with water. Bulbs will grow nice plants the first season. 10c and 15c each, according to size.

ALOCASIA ILLUSTRIS (Blue Stemmed Elephant's Ear.) An excellent plant to grow in connection with fancy leaved Caladium, or for planting in the open. The foliage is dark green, blue stems. Fine pot grown plants, 20c each; 3 for 50c.

CALADIUM ARBOREUM—This fine plant, when young, resembles the Elephant's Ear, but grows to immense size as it attains age. Instead of dying down in the fall this grows into a stem or trunk, which retains the foliage through the winter if kept in the sitting room. Or you may let the tops die down and store from frost. Plants well cared for will grow to be 8 to 10 feet high. Fine plants from 4-inch pot, 50c. This one you will like.

Giant Moon Vines

Great climber; extra fast grower. Has large, white flowers, which are produced in abundance. This is what you want for porch or window shade. An annual; reaches maturity the first year. Price, 10c.

SNAP DRAGON

A border and bedding plant of long blooming season. Long showy spikes of curiously shaped tubular flowers. Many fine colors, mixed. Pot grown plants, 5c each; 50c dozen. Hot bed plant 20c dozen.

SALVIA

(SCARLET SAGE)

Salvias are easily grown. Set in open after danger of frost is past. Plant freely in beds or borders about 18 inches apart. Salvia makes a fine background if planted in rows. Pinch young plants back to make them bunch out. They are sure to more than please. Plants ready March 20.

SALVIA SPLENDEUS—One of the most popular plants through the summer and fall. Plants grow to a height of three feet; covered with scarlet flowers. Price, not pot grown, one dozen, 20c; two dozen, 35c; four dozen, 65c. Pot grown, 5c each; 6 for 25c.

DUSTY MILLER—This plant is used for edging beds of Salvia, Cannas, Coleus, Geraniums, etc. Almost too well known to need a description. Silver white leaves. Price, 10c each; 3 for 25c.



Fancy Leaved Caladiums

They are the most charming conservatory plants. Being of a tropical nature, they like a warm temperature. Their beautiful foliage is variegated in an indescribable manner. One plant will be dotted, another ribbed and veined with pink or scarlet or yellow. Some give a Japanese effect. Has to be seen to be appreciated. They create a sensation wherever grown. Good bulbs, 25c each.

SWORD CACTUS

A large growing plant. Has white flowers about four or five inches in diameter; night blooming. Price, 15c and 25c, according to size. Yes, everything is postpaid.

INDIA RUBBER PLANT

This plant attains a large size and tree shape; has a large smooth leathery leaves; resembling the Magnolia very much. A fine pot plant. Price, 50c each.

HELIOTROPES

Very fragrant, a fine bedder in summer; also a good pot plant for winter use and a great bloomer. 10c; three for 25c.

Free Blooming Lantana

Tender Perennial

Surely you will want to try a few Lantanas this season. They are free and continuous bloomers, stand heat and drouth well, when bedding out; fine for growing in pots for specimen plants; can be wintered in a light cellar. Price, postpaid, each, 15c; two for 25c. Pot grown.

RADIATION—A great bloomer; opens orange yellow, changing to brilliant red.

A. COOK—Opens deep orange, changes to a bright rose.

SUNSET—Opens deep orange red, changing to crimson.

PINK BEAUTY—Silvery rose, yellow center.

VIOLET—Yellow and pink, golden center; changing to pink orange, then to a beautiful violet.

GOLDEN PLUME—Gold and yellow; one you will like.

JACOB SCHULTZ—Immense size; opens golden yellow, changing to orange yellow. A beauty.

WEeping LANTANA—Weeping plant of great beauty. The plant has a most graceful, drooping habit; grows very rapidly and blooms continually, summer and winter, producing large clusters of flowers of the most delicate lilac. Foliage, a dark green. 15c each; two for 25c.

Grow a few Lantanas this year and you will want many more next year.

CUPHEA (CIGAR PLANT)

Bushy plants of neat habit, about 15 inches high, bearing great numbers of narrow, tubular flowers, bright scarlet, with purple and white tips. Bright and attractive, always in bloom. These plants thrive beautifully in hanging baskets, vases, etc.; are also fine as pot plants in the window and good for bedding out of doors. Price, 10c each; three for 25c. Pot grown.

OLEANDERS

An old time favorite for porch or lawn decoration. Give rich soil and plenty of water in growing season. May be wintered any place that does not freeze. Pink or white. State color. Price, 20c each; mixed, 15c each. Leaves and stem are poison if taken in mouth.



ROYAL PURPLE PLANT

The leaves are beautiful variegated with a very deep purple; for beds and borders; also a fine pot plant. Pot grown. 15c each; two for 25c.

Sansevieria

(Zebra, Snake or Tiger Plant)

Just the plant to grow in sunless windows, dark or heated rooms; will stand almost any amount of neglect, yet holds its thick, fleshy green clouded and sword-like leaves in this graceful position.

15c each.

Our cut flower department is always anxious to serve you. We guarantee satisfaction.



Peonies

Few hardy plants are so suited to any position in the garden or lawn as the Peony. The display of flowers is very effective, rivaling the rose in beauty. A good deep rich soil suits them best with plenty of sun, while they do well in any ordinary soil, once planted they will last for years. Plant two and one-half inches under ground. If planted deeper will grow, but will not bloom.

DUCHESS D'ORLEANS—Medium to large; dark carmine pink guards, center soft pink; fragrant; mid-season; vigorous, tall; a free bloomer. A profitable cut flower; it ships well, can be depended upon for an abundance of flowers year after year. 35c each.

ZOE CALOT—Very large; soft pink tinted lilac; fragrant, full globular bloom; mid-season; growth strong; good height; stiff stems; blooms freely. 45c each.

CANDIDISSIMA—Large; tinged sulphur, becoming white; fragrant; rose type; early; blooms freely. 45c each.

MIXED PEONIES—Not a cheap lot of undesirable sorts, but a really first class mixture of good named Peonies, the leading commercial varieties predominating. 35c each; two for 65c.

OLD FASHIONED GARDEN PEONIES—Pink, white and red. 35c each; two for 65c.

ZENIAS

Hardy annual; begins to bloom early and continues until frost; fine lasting cut flowers; long stems; a real favorite; new; double giant flowers. Price, pot grown, 5c each; from beds, 20c dozen.

PANSIES

Plants should be planted out very early in the spring. Fine, large flowers; use one-half well rotted manure and one-half soil. We have a fine mixture of good plants. Price, 5c each; 6 for 25c; one dozen, 45c. Pot grown.

PONDEROSA LEMON

Easily grown in pots. Fruits eight or ten times the size of ordinary lemons, and makes as good or better lemonade. Can be used for anything that ordinary lemons are used for. Everbearing; blooms very fragrant. Will begin fruiting at two or three years old. Nice plants, 20c; larger plants, 45c. Pot grown.

A great novelty, will surprise your friends.

OTAHEITE ORANGE

A fine pot plant; glossy green leaves; blossoms very fragrant; fine plants for 20c each. Pot grown.



PANDANUS VEITCH

Graceful curved foliage, light green striped, with broad bands of white. An attractive plant that stands ordinary house culture well, is always fresh and bright in appearance. 25c; two for 45c. Pot grown.

ANTIGNON LEPTOPUS

(Mountain Rose)

A lovely, fast growing climber with beautiful rose colored flowers in racemes two feet long. The profusion of blooms is such as to give the resemblance of a rose. Fine for covering porches and trellises. Lift roots in fall, store away from frost. Price, 30c.

LADY FINGER

A moss-like plant, thick green, long round leaves, beautiful red flowers. Good for box or basket. Price, 10c.

RESSELLIA ELEGANTISSIMA

Especially fine for hanging baskets, window boxes. Covered with coral red flowers. Price, 10c.

PHILOX DRUMONDI

A hardy, much liked annual, unequalled in the fine display of their many and brilliant colored flowers; of easiest culture; bloom profusely through a long season; for beds or borders. Plants from hot beds, 20c per dozen; pot grown, 5c each; mixed colors.

AGERATUM

Blue perfection for masing, bedding, edging or potting; beautiful blue flowers in abundance. Price, 10c; three for 25c; dozen, 75c.

VELVET PLANT

A beautiful plant. Leaves and stems of a velvety nature, shining and glistening, reflecting many new colors which seem to change as plant is moved. Pot grown. Price, 15c.

TRAILING VELVET PLANT

Of bushy, spreading habit. Olive green leaves; trumpet shaped flowers; rosy lavender color. Pot grown. Price, 15c.

CALLIA LILY

Beautiful large green leaves. Flowers large and held high on stiff stems; blooms white. Price, pot grown, 15c each.

AMARYLLIS JOHNSONII

Tall spikes, crowned with several large blooms; salmon red color, one of the finest plants we know of. Small, 15c; blooming size, 40c to 50c.

ASTER

Early and profuse bloomers. Wide range of colors, mixed. Plants compact of branching habit; 16 to 18 inches high; fine for cut flowers. Price, 10c; three for 25c.

ANGELIS' TRUMPET

(Brugmansia.)

Grows easily, blooms freely; blooms are six to eight inches long, trumpet shaped, white. Price, cut to 20c; three for 50c.

ICE PLANT

A trailing plant for hanging baskets or the garden. Foliage very thick and shiny. Appears as though covered with ice crystals. Small red blooms. Price, 8c each; two for 15c.

ARTILLERY PLANT

PILEA—Drooping, graceful habit with fern-like foliage. Is covered with very small pods or blooms. Price, 10c.

EUPHORBIA MARGONITO

(Snow on the Mountain)

Easy as a weed to grow in any location or soil, two to four feet high; foliage, a light green, margined with silvery white; in groups gives the effect of snow on the mountain; once planted will seed itself for each season. Pot grown plants, 5c; six for 25c.

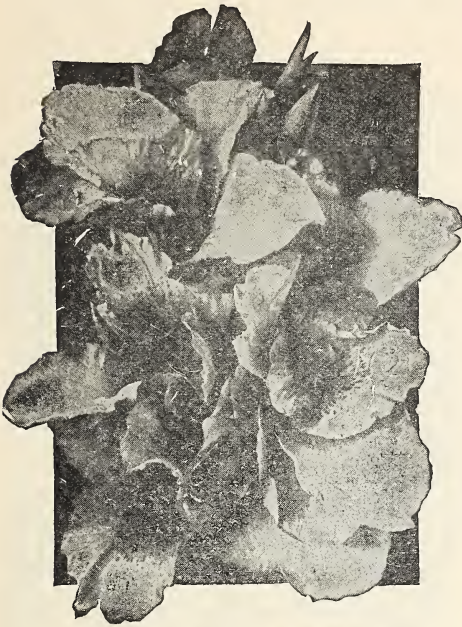


UMBRELLA PLANT

Should be grown in bucket half full of rich soil, then filled with about two inches of water. Always fresh, green and attractive. Stems grow two feet high, surrounded by whirls of leaves. (May be grown in pots, if well watered.) Price, 15c; two for 25c.

Remember

We Pay Delivery Charges



CHOICE CANNAS

(All Cannas Postpaid)

The greatest of all bedding plants, of quick growth and tropical appearance. Will bloom first year from early until frost. They do best in rich soil with plenty of water. Do not plant in the open until danger of frost is past. Do not plant too deep. The eyes should be barely covered. We do not send out anything but strong two or three-eye roots.

Most varieties should be dug after frost and stored in box of soil where they will keep dry and not freeze.

Any six cannas of the same variety for five times the price of one. Any 12 of same variety for nine times the price of one.

No home should be complete without at least a few cannas. They increase rapidly. Buy a few now. In two or three years you will have them to sell.

CANNA MRS. PIERRE DU PONT—Wonderful new ruffled rose-pink, magnificent blooms, green leaves, medium height. Best of pink cannas. This new canna has been selling for 75c to \$1.00 each. Our price only 40c.

CITY OF PORTLAND—3 feet; deep pink; foliage green; a new variety, sure to please. 20c each.

WYOMING—5 feet; flowers large, bright orange, slightly rimmed and flaked with rose; leaves rich purplish bronze. Price, 15c each.

GAIETY—5 feet; reddish orange, mottled with carmine; the tongue is yellow and densely spotted with carmine. Price 15c each.

WINTZER'S COLOSSAL—The color is a striking vivid scarlet that retains its brilliancy over a long period. A most showy flower of enormous size with large and broad petals. A strong grower; height, 5 feet. Price, 15c each.

THE AMBASSADOR—Brilliant cherry-red flowers in magnificent large trusses, forming a showy contrast to the rich bronze leaves. Grows about 5 feet tall. Price, 15c each.

PRESIDENT (New)—6 feet; flowers extra large, red, high quality; flower stalks strong, holding the flower well above the foliage. Our price, only 15c each.

VENUS—4 to 5 feet; an exceedingly beautiful variety; variegated rose pink, mottled near center, edge with creamy white; vigorous and long seasoned; one you will like; green foliage. Price, only 15c each.

EUREKA—4 1-2 feet; one of the best cream white cannas grown; robust, quick grower, free bloomer; a few placed in bed with red add much to the appearance. Try it and be convinced. Price, only 15c each.

ALEMANNIAS—5 feet; orange, mixed with scarlet; an old variety; a hard grower. Price 10c each.

MRS. CROZY CANNA (New)—The flowers are borne erect in great heads in such profusion that they crown the plant with a blaze of vermilion, scarlet, bordered with deep golden yellow. Very popular. 15c each.

U. S. CANNA—A good red Canna, green foliage. Grows about five feet tall. Price, 10c.

KING HUMBERT—Five feet, large scarlet flowers, bronze leaves; free bloomer. One of the leading varieties. Price, 15c each.

YELLOW KING HUMBERT—Queen Helen—Four to five feet; flowers rich, clear canary yellow; crimson spots in center; very large; green foliage. Price 10c each.

CHRYSANTHEMUMS

(Indoor Variety)

One of the finest flowers growing; the king of all blooming house plants. Flowers will keep a long time after cutting. Get your plants now; if you want large flowers keep plants pruned and disbudded, leaving only three or four buds, for a real show bloom leave only one. In August, dig with ball of dirt on roots, pot in eight-inch or larger pot; keep from frost and well watered. Keep them sprayed with Shep. Enough Shep to make four gallons of spray, 40c. Prices on all of the following, 15c each; two for 25c.

NAGAYA—One of the best late varieties. Blooms about the last of December; color, bright yellow.

CHRYSOLORA—This fine new variety can be described as a standard yellow; early variety.

HARVARD—A good, large flowered, dark red.

EDWIN SEIDWETZ—Late, bright pink.

BLACK HAWK—Large; dark red; velvety.

ENCHANTRESS—The color is bright rose-pink of a very even shade.

JOSEPHINE FOLEY—The best white introduced in recent years. Purest white. Early mid-season.

WILLIAM TURNER—One of the finest of beautiful white.

BETSY ROSS—Large, pure white. A very popular variety. Sure to please.

WHITE CHIEFTAIN—An ideal white.

YELLOW WILLIAM TURNER—One of the brightest yellow Chrysanthemums; a standard variety.

Mammoth Verbena

A very popular and useful bedding plant; to keep blooming in best condition, keep all old flowers cut off; a severe clipping will make a better plant. A fine collection of mixed colors. Each, 8c; 3 for 20c; 6 for 35c.

TRUE BEAUTY OF OXFORD—The world's best Verbena, cerise red. 15c each.

GRANDIFLORA ROYALE—Rich deep royal blue, large creamy eye, enormous size bloom. 15c each.

PURPLE VERBENA—Rich deep, very fine, one of the best known varieties. 10c each.

TRUE PINK BEAUTY OF OXFORD—Same size bloom as cerise, but a wonderful pink. 15c each.

GIANTEA ALBA—Pure white, free bloomer. 10c each.

NOTICE—All 15c Verbenas are 2 for 25c; 6 for 60c; \$1.10 per dozen. All 10c Verbena, 6 for 45c; 12 for 85c; pot grown, post paid.

DAHLIA BULBS

(All Dahlias Postpaid)

Spade or plow the ground to a depth of 10 inches or more; use a liberal amount of well rotted manure; lay bulbs flat and cover to a depth of about five inches; space each way three or four feet. Stake when one foot above ground. Cultivate well.

BASHFUL GIANT—Decorative; if you like large blooms try this one. Color apricot with golden shadings. Sure to please. 65c each; two for \$1.15.

PRIDE OF CALIFORNIA—Deep red, large thick flowers. Good bloomer. Very fine bulbs, 30c each; two for 50c.

ATTRACTION—Very long stemmed; color, lavender. A real beauty. Guaranteed to more than please. 50c each; two for 95c.

DR. TEVIS DECORATIVE—Salmon rose, blending to old gold and apricot. Extra fine. 45c each; two for 75c.

BILLIONAIRE—Very, very large; orange yellow. 65c each; two for \$1.15.

DARLENE—Blooms early to late in hot or dry weather. Good keeper. Long yielding, medium size; shell pink. 25c each, two for 45c.

JERSEY BEAUTY—A perfect bloom; long stems. Free bloomer, popular for cut flowers, beautiful deep clear rose pink. 60c each; two for \$1.00.

MRS. CARL SILBACH—Very large lavender pink, long stems; fine for cut flowers. 45c each; two for 85c.

MAUD ADAMS—An early and fall bloomer sort. Very dainty; white tinted with lavender. 20c each.

MINA McCULLOUGH—Golden yellow, tipped with bronze. Price, 15c each.

QUEEN VICTORIA—Pure golden yellow. 15c each.

PENELOPE—White overlaid lavender. An old standard. Has compact clumps. 15c each; two for 25c.

JACK ROSE—Red. The identical shade of the rose with the same name. 15c each; two for 25c.

F. L. BASSETT—This Dahlia will produce more blooms than any Dahlia ye ever saw. The first to bloom and always in demand, it is deep lavender or purple, stems 18 inches long and bright foliage. This Dahlia should be cut regular, every day. 15c each; two for 25c.

DEE LIGHTED—The largest white Dahlia, with immense double blooms six inches across; instead of centers being round they are elongated in such a way that it suggests a smile, "the Teddy Roosevelt smile." This Dahlia should be pinched back when one foot high. A surprise for any garden and will give satisfaction; also a good bulb producer and easy to keep over the winter. 20c each; two for 35c.

FLORAL PARK JEWEL—Extra long stems and free blooming; variegated red tipped white. 15c each; two for 25c.

SYLVIA—Pink with white center. 15c each; two for 25c.

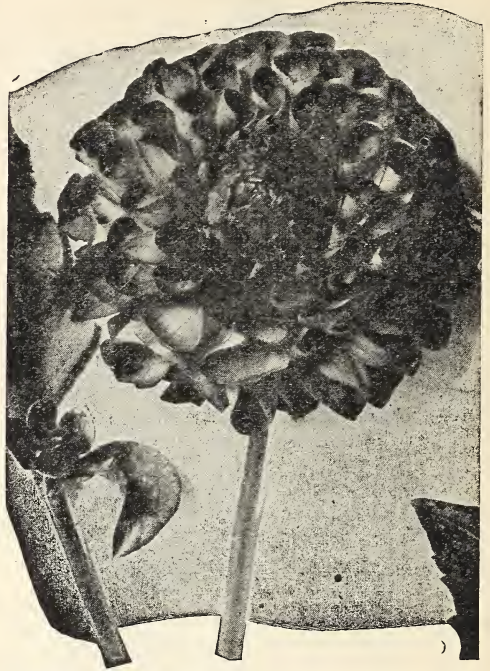
ROBERT BROOMFIELD—Early, white. 15c each; two for 25c.

MAURICE RIVIORE—(Collerette). Color is purple to red with a pure white collar. 20c each; two for 35c.

MRS. HARTONG—(Decorative). A new color in Dahlias, being fawn color throughout. 25c each, two for 45c.

ARRABELLIA—(Show). Yellow edged pink. A strong bloomer and fine for cut flowers. 25c each; two for 45c.

MRS. I. DE. VER WARNER—(Decorative)—Mauve-pink. Impressive on account of its size and beautiful orchid color. An abundant bloomer. 30c each.



SPECIAL—A fine lot of mixed Dahlias, 12c each, two for 20c; six for 35c; per dozen, \$1.00.

French Hydrangeas

These plants are adapted for pot culture or for the garden in summer only. By thoroughly mixing one-half pound alum to one-half bushel of soil to pot them in, they will bloom blue.

PRESIDENT FALLIERES—Very delicate rose pink. Price 20c each. Try blueing this. To make these Hydrangeas bloom blue, put one-half pound of alum, broken into pieces about the size of a hickory nut, with each bushel of soil.

RADIANT—Large clusters of rosy amber, changing to bright pink. Quite a distinct color and very beautiful. Price 20c each.

GEN. DE VIBRAGE—Large; bright rose flowers; a fine variety and very popular. In order to move them, will sell nice plants at 30c each.

EMIL MOULLIN—One of the finest sorts; very large flowers; pure white, with rose carmine eye, and only 20c each.

HIBISCUS

Where can we find a more striking plant for summer or winter? It is always budding or blooming. Hibiscus in pots are extra fine for the porch or balcony, or for bedding out in summer. Tender Perennial.

PEACH BLOW—The flowers are double and from four to five inches in diameter, of a rich, clear pink with small deep crimson center. Very beautiful. 15c each; two for 25c; large size, 40c each. Pot grown.

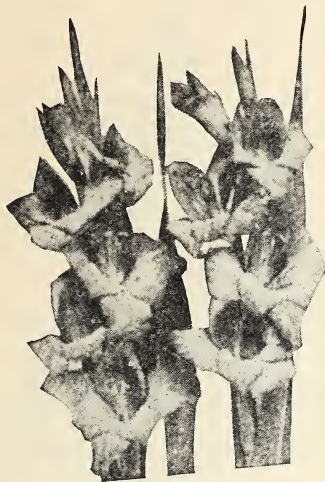
RUBIA—Has large double flowers of a deep crimson color. This is one you will appreciate. Pot grown. 15c each; two for 25c.

ABUTILON ECLIPSE

Trailing in habit; fine for box or basket; flowers bright yellow with crimson throat. 15c each. Pot grown.

TAYLOR'S GLADIOLUS WILL MAKE YOU GLAD

NOTICE THE REDUCED PRICES THIS SEASON



The Gladiola deserves a good place in every garden, small or large. Easy culture and fine for bedding. Excellent for cut flowers. Plant any time from April 1st to July, in sunny places, in rows, four to five inches apart, or bed out six inches each way, four inches deep, and stake. After frost, lift the bulbs or uncover, remove the roots, store in a dry place away from frost. Plant out again next spring.

Price of all Gladiolus listed, your selection, 1 for 6c; 6 one kind, 30c; 12 one kind, 55c; 25 for \$1.00; 50 for \$1.90; 100 for \$3.50. Postpaid. For 50 or over you may select 25 of a kind.

MRS. FRANCIS KING—A most beautiful flame of pink. Large flowers. Plant in abundance.

AMERICA—Stands among the best. Large beautiful flesh pink. Will last long time after being cut. A high grad Gladiola.

PEACE—Flowers are long, heavy, straight spike; a beautiful white, with pale lilac markings.

TOPAZ—Very fine salmon buff.

HALLEY—One of the earliest of all Gladiolus to come into bloom. Color a delicate rose with a white blotch.

EVELYN KIRTLAND—An outstanding variety of luminous coral pink, shaded with deep pink on the lower petals. Strong spikes. A winner.

WAR—Deep blood red, shaded crimson black; flowers very large; borne freely; late.

LEMARECHAL FOCH—A great novelty; a lily like flower of salmon pink, with blood red blotches. One among the very finest. A leader.

WILBRINK—Lovely flesh pink with orange blotch on lower petals.

MRS. FRANK PENDLETON, JR.—A lovely salmon pink, having blood red blotches in the throat.

ALICE TIPLADY—Orange saffron, flamed red. A real good Gladiola.

SCHWABEN—One of the newer of the yellow varieties; magnificent cut flower. The flowers all open nearly at the same time. A real beauty.

GRETCHEN ZANG—Deep pink.

1910—Rose color, almost red; a real good Gladiola that will please you. This is one among the best. Very fine for cut flowers. Plant heavy with this one.

HERADA—Good spike, with large wide open blooms, of a bright glistening mauve color; must be seen to be appreciated. Hard to beat.

E. J. SHAYLOR—This is one we have tried and found all that was claimed for it. Same color as 1910, but is ruffled. A beauty. Very fine.

MARY PICKFORD—Color creamy white; throat soft sulphur yellow.

FLORA—Beautiful, canary, with scarcely any markings. Considered the best yellow.

CRIMSON GLOW—Velvety crimson. A leading red.

Extra Special

A mixture of many kinds, no name or color given; good bulbs. Only 5c each; 6 for 25c; dozen for 40c; 2 dozen for 75; 50 for \$1.45; 100 for \$2.75.

CAPE JASMINE

Pure white, flowers very fragrant, measuring two and one-half inches across. Treat as a pot plant is planted out; will need some protection in winter. Pot grown. Price, 20c.

ACALPHA

(Fire Dragon)

Rich and beautiful mottled and blotched with crimson or green background; the summer heat has no effect on its markings. If you haven't this in your collection, order one or more; it is a beautiful plant. 15c each.

CINNAMON VINE BULBS

Beautiful foliage and dainty flowers, highly perfumed; hardy climber. Once planted will last a life time; vines dying down to the ground each autumn, but growing very rapidly each spring. Grows well in the shade or sun, on dry land or wet land. Good sized bulbs, priced at 8c each; three for 20c. Large bulbs, 15c each; two for 25c; six for 60c; dozen for \$1.00.

Comet Plant

(Acalpha Sandrilli)

Leaves are dark green, from the axil of each of which spring a long drooping spike of glowing crimson scarlet, nearly an inch in diameter and from 18 to 24 inches long, very velvety in texture. Exceedingly curious and interesting novelty. Is found to have a large sale on account of its oddity.

Price, 15c each



THE VOGUE OF OLD-FASHIONED FLOWERS

ROOTS LIVE IN THE OPEN THROUGH WINTER

Today, more than ever before, lovers of flowers everywhere are seeking for their gardens, the better forms of those "Old-Fashioned Flowers of Grandmother's Day." New and rare types continue to appear from various sources. Both here and from foreign countries. Not pot grown.

LATHYRUS (Perennial Sweet Peas)

These perennial Peas, although lacking fragrance, are very valuable because they will last indefinitely. The vines grow from 8 to 10 feet long. Cut flowers good for funeral work. Blooming plants. 15c each; two for 25c.

HARDY HIBISCUS

(Mallow)

Grows four to six feet high, large flowers; tops die in fall, sprout up each spring; mixed colors. 15c each.

HARDY WHITE HIBISCUS

Tall, free flowering, perfectly hardy; color white, with deep crimson center. 25c each.

HARDY PINK HIBISCUS

Similar to the hardy white Hibiscus, but the flowers are of a pink, very striking. 25c each.



YUCCA (Adam's Needle)

A very effective and striking hardy plant; will grow on high, dry banks or on the lawn. Good for the rockery; sword-like evergreen foliage. Creamy white flowers, borne on tall stems. 15c and 25c each.

DELPHINIUM

These hardy plants belong in every garden. Few perennials make such a fine show during spring and early summer, and in cooler sections the plants keep on blooming for many months. They are excellent for cutting. Set the plants four feet apart, so that they can develop freely. During severe winter weather cover with coarse straw or leaves. Belladonna, a beautiful light blue, 20c each; three for 55c. Bellamosa, of the same stately habit as Belladonna, but with dark blue flowers, 20c each; three for 55c.

GOLDEN GLOW (Double Rudbeckia)

Bears immense masses of large, round, golden yellow flowers for weeks. Plant out in garden. 10c each.

SHASTA DAISY

Our many friends would be surprised to see the enormous size of the large-flowering Shasta Daisies. The plants grow vigorously and are perfectly hardy. The large white flowers are borne in the greatest profusion. Price, 10c each; three for 25c.



RED HOT POKER (Tritoma)

Large beautiful spikes of orange scarlet, ever-blooming. Succeeds in any ordinary garden soil, but responds quicker to liberal treatment; hardy if given protection. Best to bury roots in sand where they will not freeze, 25c each.

HARDY CRIMSON HIBISCUS

Immense striking deep crimson flowers; nothing with as much merit has been introduced in recent years. Price 25c; one of each, 65c.

BLEEDING HEARTS

(Dicentra Spectabilis)

These pretty spring bloomers with their graceful, drooping sprays of heart-shaped pink and white flowers. Are very ornamental, and bloom early in season. Small plants, 25c each; two-year-old plants, 60c.

Eulalia Japanica Zebriana

A rapid growing grass, with light strips across the green leaves. Very ornamental and is hardy grower. Will form large clumps.

15c each.

Two for 25c

Remember — We save you the delivery charges.



IRIS

Very beautiful bloom; easy to grow under most any condition; plant in early spring or fall. Price 15c; two for 25c. Mixed colors, 10c each; three for 25c.

CRIMSON KING—Rich claret purple; a very good variety. Height, 24 inches.

QUEEN OF MAY—Lilac pink; large; a mid-season variety. Height, 30 inches.

SAPHO—Standards lavender purple, falls dark reddish purple; fragrant; very early.

FLAVENSENS—A beautiful shade of canary yellow; one of the tall varieties.

CELESTE—A sure blue, slightly deeper; falls very large blooms. Height, 24 inches.



Taylor's Hardy Phlox

No class of hardy perennials is more important than the Phlox, which succeed under almost any conditions and flowers from the end of June until late in the fall; and while they will continue in good condition and flower freely for many years without attention, still they are much improved by liberal cultivation. Red, pink, purple and white. 20c each.

BEACON—Tall variety; color, cherry red; a wonderful Phlox.

ANTONIN MERCIÉ—A beautiful lilac you will make no mistake in buying this one.

BRIDESMAID—A very early white variety with red eye.

OBERGARTNER WITTIG—A wonderful variety in pink.

HARDY DAY LILY

Bears beautiful orange colored blooms on tall straight spikes, two to three feet tall; fine growing roots. 15c each.

HARDY IVIES

Boston Ivy, 20c each

English Ivy, 15c each

Money Ivy, 10c each

Ground Ivy, 10c each

PARLOR IVY (German Ivy)
—For hanging baskets; no trouble; extra fast grower. Price 10c each; three for 25c. (Not for out-door planting)

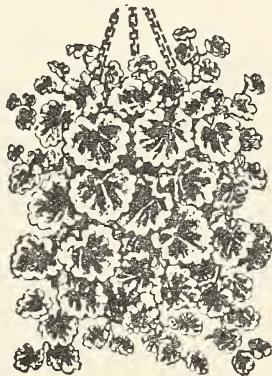
IVY—Solid green leaves, 10c; three for 25c.

MONEY IVY—One of the best Ivies grown; extra fast grower; foliage green and round; leaves are the size of nickels, quarters, half dollars and dollars. The leaf is borne from a stem in the center, giving a parasol effect. A real good one.
Only 10c

VARIGATED IVY—Its green leaves are spotted with white.
10c Each.



English Ivy



Variegated Ground Ivy

ASPIDISTRA

Called "the cast iron plant," because of its ability to stand heat or cold, wet or dry weather; will grow and thrive under almost any condition; large green foliage. Price, nice plants, 20c each; two for 35c.

VINCA VARIAGATA

Green and white variegated leaves. Grows rapidly out of doors in summer, and in much used for porch or window boxes and hanging baskets. An attractive trailer. 10c each; three for 25c; dozen, 90c.

ALTERNATHERAS

(Dwarf Coleus)

For borders, carpet gardening and for making letters. Six inches high. Will stand shearing. Leaves dark green with pink and red shading. Price, 5c each; six for 25c; one dozen for 45c.

Same thing with yellow instead of red; same price.

BRAZILLIAN PLUME PLANT

Justicia Carnea.)

This is a good plant, blooming profusely, commencing to flower when young; strong and rapid grower and throws long shoots, each of which is tipped with a plume-like flower. Color, pink. 20c, two for 35c.

PETUNIAS

LARGE, DOUBLE FRINGED—A variety of colors. Price, 10c. A great seller.

RUFFLED MONSTER—This Petunia is one of the largest in existence; several colors, mixed. 15c each two for 25c.



WANDERING JEW

(Tradescantia)

Too well known to need describing. A rapid grower; excellent in hanging baskets, vases or window boxes. Red and green, variegated yellow and green; solid green, pot grown, 10c each; 3 for 25c; one dozen assorted, 75c. Rooted cuttings, 5c each; dozen, 45c.

*"It's Not a Home
Until It's Planted"*



SHRUBBERY AT REDUCED PRICES

(For Sale in Arkansas, Illinois, Kansas and Missouri Only.)

DOZEN PLANTS OF SAME SIZE AND PRICE AT 10 TIMES THE PRICE OF ONE PLANT.
All Shrubs field grown, postpaid.

We have added to our greenhouse a nursery stock of shrubbery, which we have had State Inspected. Can furnish these trees and shrubs with certificate of inspection with each shipment, in Arkansas, Kansas, Illinois, and Missouri. (See Certificate on inside of front cover.) As our nursery stock is limited we cannot take out license to sell except in Arkansas, Illinois, Kansas and Missouri. Please do not order shrubs if you live out of Arkansas, Illinois, Kansas or Missouri.

SYRINGA, VULGARIS (Common Lilac)—This is the well-known Lilac of the old-fashioned garden. A tall shrub with smooth, heart-shaped leaves and great panicles of most fragrant blossoms in spring. Much used as a cut flower. It grows well in any garden soil, but prefers a heavy loam. 25c each.

CALIFORNIA PRIVET—The greatest and most used plant for hedges; green foliage; grows well most anywhere. Price, 6 for 50c; 14 for \$1.00; 50 for \$3.00; 100 for \$5.00.

SPIREA VAN HOUTTEI—Said to be the best of all white flowers; long graceful drooping stems. Nice bushy plants, 30 to 36 inches high, 25c each; two for 45c; 12 for \$2.50.

MATRIMONY VINE—A hardy climber; will flourish everywhere. Produces purple flowers later a crop of scarlet berries; also a good carpet vine. 18 to 24 inches, 20c; 24 to 36 inches, 40c.

FLOWERING CRAB — (Bechtel) — Double Makes medium sized tree; perfectly hardy; when in bloom appears to be covered with delicate pink, perfectly double, small rose-like flowers of delicate fragrance. 2 to 3 ft., 75c.

HONEYSUCKLE—A good hardy vine for covering up anything. Highly perfumed. Fine plants, 15c each.

MOCK ORANGE—A fine shrub, has small white flowers. Small plants, 12 to 18 inches, 20c each.

FIGS—Figs are easy grown here. Small plants will often winter-kill to the ground, but the roots put up each spring. It is the new growth that has the fruit on it; try a few plants grow your own figs. 2 to 3-foot plants, 35c each.

CALYCONTHUS—Sweet scented shrub, flowers chocolate colored. Very desirable. Field grown, 18 to 20 inches, 45c.

BIRD OF PARADISE—Small leaf, yellow blooms. Plume-like when in bloom. Beautiful, strong plants, three to four feet, 50c each.

HONEY SUCKLE VINE—A fine, hardy climber, will grow well anywhere. Blooms highly perfumed. 15c each.

ARMOURS RIVER PRIVET SOUTH—Among the best Privet grown, an evergreen, fine for hedges or for specimen plants. 24 to 30 inches high, branched, 10 for 90c; 50 for \$3.50; 100 for \$6.00.

EVERBLOOMING BUTTERFLY BUSH—Plant either in fall or spring. Makes a beautiful blooming plant first summer. Lilac colored flower. Pot grown, 15c each; field grown, 25c to 40 each.

WISTARIA—Hardy, nursery grown vines, purple or white. Very fine. Our price, 25c each; two for 45c.

SNOWBERRY—Small pink flowers, large white berries that hang on plant through winter. 35c each.

POMEGRANATE—Summer flowering; tall growing; shrub flowers of pleasing red color. 40c each.

RED HONEYSUCKLE—A fine, hardy vine for covering or shading. Price, 25c.

CAPE JASMINE—A beautiful evergreen shrub, blooms white and highly perfumed. Requires some protection in winter. Small, 25c; medium, 50c; 20 to 24-inch plants, 75c.

SNOWBALL—An old-fashioned shrub that is still very popular. Covers in large white balls of blooms, that look like snow balls. 12 to 15-inch plants, 25c; 2 to 3 ft., 60c.

RED BARBERRY THUNBERGI—New and very attractive; same as Japanese Barbory except this one is red all season if grown in the sun. Pot grown, 20c each. Nice field grown plants, 50c each.

GOLDEN ELDER—The golden yellow leaves contrast beautifully with other shrubs. Flowers white; grows naturally, 10 to 12 feet. But can be pruned into a neat compact bush. 12 to 15 inch, 20c; 3 to 4 ft., 45c each.

SPIREA THUNBERGI—The first of all Spiraea to bloom. The entire bush is covered with small white flowers. A real beauty when in full bloom. 12 to 18-inch plants, 25c each; 18 to 24-inch plants, 40c each.

WEEPING WILLOW—Plants well rooted and thrifty. Good plants, 25c; very large, 50c.

SHRUBBERY AT REDUCED PRICES

PHILADELPHUS VIRGINAL—The first of the ever-blooming Mock Oranges to win our hearts; double, semi-double and single flowers appearing in same bunch, and so enchantingly sweet that we wonder someone has not converted this flower into "Mock Orange" perfumes. 35c each.

BUSH HONEYSUCKLE—The Honeysuckle in bush form; color, white or pink, state color. 15 to 24-inch plants, 20c each.

BERBERIS THUNBERGI—A very attractive shrub, as single specimen on or about the lawn, or for planting in corners by the house or porch; fine for hedges; about 18 inches high and well branched. 25c each; two for 45c; dozen, \$2.35.

DOUBLE ALTHEAS, OR ROSE SHARON—They are covered in beautiful double blooms in August and September and sometimes longer. Will grow from three to seven feet long; compact and bushy. Guaranteed to please. Can give you white, red or pink. 40c each. Single mixed Altheas, 30c; two for 55c; dozen, \$3.00.

HIBISCUS (MALLOW)—Perfectly hardy for outside growing, mixed colors. 15c each.

WEIGELA (Eva Rathke)—Brilliant crimson flowers, borne profusely from mid-summer until fall. The bushes grow six feet tall and spread six feet. Does well in sun or semi-shade. Size 2 to 3 feet, 45c.

FORSYTHIA SUSPENSA—The drooping or weeping variety; 12 to 15 inch plants for 15c each.

EVONYMUS JAPONICA—A very fine hardy ornamental evergreen; good grown as a pot plant, hedge or as a specimen on the lawn; a big seller; sure to please. 8 to 12 inches, 20c each; \$2.00 per dozen; 15 to 18 inches, 40c each; \$3.50 per dozen.

WEIGELA ROSEA—This is a most excellent free-flowering shrub of elegant growth and erect, yet compact habit. All during June the bush is covered with a mass of rose-colored blooms. 25c each; large, 45c each.

DEUTIZ CRENATA ROSEA—A fine upright growing shrub, grows about six feet tall. Pink blooms. 25c each; large 45c each.

DEUTZIS (Pride of Rochester) Grows strong and upright, four to six feet high, double white flowers. 25c each; large, 45c each.



Bonita Arborvitae in front
Pyramid in rear
See page 18

CONRUS, SIBIRICA (Red Branched Dogwood)—This variety grows ten feet tall and its coral red branches are very effective in winter especially when planted in masses. The flowers appear in clusters and are a creamy white color. Fruit, pale blue. The Dogwood likes a moist soil. 25c each; two for 45c; four for 75c

ABELIA GRANDIFLORA—Plant in half-shaded place; an evergreen producing immense quantities of tubular shaped white flowers, about an inch long. Bush, dense and compact; fine for specimens or hedges; plants, 18 to 24 inches, 25c each.

BUMALDA SPIREA—Dwarf; everblooming; color pink. Plants, 8 to 10 inches, 20c each; 15 to 18 inches, 30c each.

BEGNONIA—A large climbing vine; large flowers; dark red throat; fine for covering unsightly places. 20c each.

ANTHONY WATERER SPIREA—Grows 15 to 18 inches; a great and continuous bloomer; fine to grow any place you want plants. Color, red. Small plants, 15c; two for 25c; large, 35c.

TAMARIX AFRICANA—A handsome shrub of strong growth; fine feathery foliage, giving branches a plumelike appearance. Delicate pink flowers. Will grow anywhere; fine for basket-ground or shrubs. 20c each; large, 30c each.

FORSYTHIA (Golden Bells)—This is one of the most useful shrubs for the permanent decoration of buildings. It can be easily trained over a wall, fence or tree trunk. The flowers are bell-shaped, of a clear yellow. It is the earliest shrub to bloom. 25c each; large, 35c each.

HYDRANGEA (Hill of Snow)—H. Abroecens (Grandiflora)—One of the most valuable characteristics of this shrub is its coming into bloom just after the passing of all the early spring flowers; flowering season from May until late August, makes it an acquisition on any lawn; the heads of flowers are produced on long, strong stems, making them good for cutting for indoor decoration and at time when few other flowers can be obtained. 30c each; large, 60 each.

HYDRANGEA PANICULATA—A most valuable ornamental shrub. Bushy and robust, every branch tipped with an immense close panicle of flat snow-white flowers. The trusses of bloom are ten to twelve inches long and nearly as thick through, lasting for two or three months. 30c each; two for 55c; large, 60c each.

FLOWERING LOCUST—A good easy, quick growing shrub. Will grow ten feet or more high. Covers with clusters, pink flowers, resembling sweet pea blooms, field grown. 18 to 24 inches, 20c each; 24 to 36 inches, 30c each; 36 to 48 inches, 40c. Postpaid.

FLOWERING ALMOND—Double pink. One of the first flowers to bloom in the spring. Very fine. 18 to 24 inches, 40c each.

FLOWERING PEACH—Red. A beautiful tree, grows about ten feet tall in may. Covers with beautiful flowers. 40c each.

CREPE MYRTLE—A real beautiful shrub. Free bloomer, grows eight to ten feet. Colors crimson or pink. 25c each; 2 to 3 foot bushes, 50c each.

PHILADELPHUS (Mock Orange)—Flowers very fragrant, creamy white. Plants 15 to 18 inches high, 25c each.



Bakers Pyramid
Arborvitae
See page 18

We will ship anything in catalogue, prepaid, to any state in the United States, except nursery stock.

EVERGREENS

We have a large stock specimen evergreens at very reasonable prices. The following are all dug with a ball of earth and wrapped in burlap. These can only be sent by express or freight. The customer paying the charges at destination. The prices quoted are F. O. B. Russellville. Packed free. (B. & B. means balled and burlaped.

Please notice the savings in these prices. Buy your evergreens from us and save the difference. All B. & B. evergreens are shipped by express or freight. Not paid. Prices quoted on everything else are prepaid.

Come and see our evergreens. We have several sizes, not listed here. Our evergreens are the finest we have ever seen. Quality guaranteed.

Texas Glanca

These are a blueish color, an upright pyramidal; the color makes it distinctive; strong open growing. Fine plants, B. & B., 15 to 18 in. high, \$1.00; 24 to 30 inches, \$1.75.

Bakers Pyramidal Arbor Vitae

This is one of the best pyramidal Arbor Vitae we know of; grows tall and slender. Will reach a height of 7 or 8 feet. Stately and ornamental. Used much in landscaping.

18 in. to 22 in., B. & B.	\$1.25
24 in. to 30 in., B. & B.	\$2.00
30 in. to 36 in., B. & B.	\$2.50

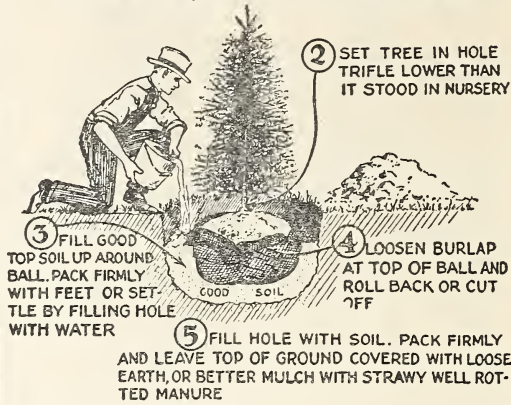
Cedrus Deodora

A real beauty in evergreens; pyramidal growing from broad base to point at tip; bracing horizontal, foliage silver or bluish color; a striking beauty on the lawn as specimen or in groups adds grace and beauty to the finest grounds. Large growing.

20 in. to 24 in., B. & B.	\$2.00
36 in. to 48 in., B. & B.	\$4.50

How to Plant Evergreens

- (1) Dig hole a foot larger and deeper than ball of earth. Provide good, loamy top soil to fill around ball.



Berkmans Dwarf Golden Arbor Vitae

This is one of the best low-growing Arbo Vitae, very bushy and compact. Fine as a specimen or group planting. Plant anywhere a low-growing plant is required. This is one evergreen liked by all. Five feet at maturity.

15 in. to 18 in., B. & B.	\$1.75
18 in. to 24 in., B. & B.	\$2.25
24 in. to 30 in., B. & B.	\$2.75
30 in. to 36 in., B. & B.	\$3.00
36 in. to 42 in., B. & B.	\$3.50

Irish Juniper

Upright pyramidal, slightly spreading, shiny light green color. A beautiful plant; 18 to 24 in., B. & B., \$2.00.

Bonita Arbor Vitae

Very compact dwarf habit, almost round in shape, dark green color; a standard variety; 18 in. to 24 in., B. & B. \$2.25
24 in. to 30 in., B. & B. \$2.90
30 in. to 36 in., B. & B. \$3.25

LARGE GROWING TREES FOR SHADE

CATALPA SPECIOSA—A good looking, fast growing shade tree; has white flowers. Two to three feet high, 20c each; 3 to 4 ft., 25c; 4 to 5 ft., 30c; 5 to 6 ft., 35c.

CATALPA BUNGEI—(Umbrella Catalpa)—Flourishes in all soils and climates. Large glassy heart shape, deep green leaves, laying like shingles on a roof. Very ornamental; large branched. Five to six feet, \$1.50 each.

BOX ELDER—A fine, quick shade Four feet, 20c each.

AMERICAN ELM—An extra good shade tree. 3 to 4 feet, 20c each.

MULBERRY—Good for fruit or shade. 2 to 3 feet, 20c each; 3 to 4 feet, 25c.

SYCAMORE—A lofty, wide spreading tree. Valuable for its handsome foliage. Bark, an attractive grayish green. Through the winter it has a mottled appearance. 3 to 4 feet, 20c each.

MAGNOLIA GRANDIFLORA—That wonderful well known evergreen shade tree. Just what you have been wanting. 50c for small; 3 feet, \$1.25.

LOMBARDY POPLAR—Very tall and slender growing; makes a beautiful background. Very ornamental. 2 to 3 feet, 15c; two for 25c; 3 to 4 feet, 20c; two for 35c; 4 to 5 feet, 25c; two for 45c; 6 to 8 feet, 50c; two for 90c.

CAROLINA POPLAR—A vigorous, native pyramidal tree of rapid growth, with large glossy leaves; valuable for quick shade. Makes a fine spreading head if well cut back the first few seasons. Same price as Lombardy.

SILVER LEAF POPLAR—Useful in breaking the monotony of lower round-topped trees. Will grow to a tall spire 80 feet high. Its leaves are glossy green, silvery beneath, creating an attractive flashing effect when stirred by the winds. Often used in landscaping against blank wall spaces of high public buildings. Same price as Lombardy.

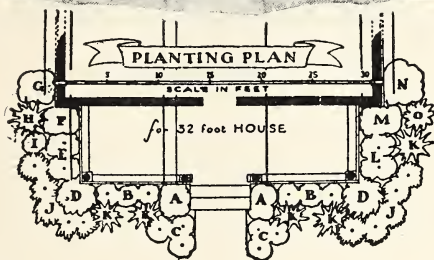
NORWAY POPLAR—Very broad, triangular leaves with finely scalloped edges, smooth dark green. Makes a thick broad-topped, shading tree of quick growth and great hardiness. Same price as Lombardy.

CATALPA BUNGERI—(Umbrella Catalpa) Grows 8 to 10 feet high, spreads out like an umbrella; very ornamental. Large and bushy. 5 to 6 feet stems. \$1.50 each.

WEeping Willow—Branches long, slender, weeping habit. Very fine. 2 to 3 feet, 25c; 5 to 6 feet, 50c. All shrubs are postpaid.

CHIND UMBRELLA—Dense spreading umbrella-like head. Very useful for formal objects. Quick growth. 2 to 3 feet, 20 each; 3 to 4 feet, 25c each.

PLAN YOUR PLANTING



To carry out the planting plan submitted here, we list the plants required, which we offer at attractive prices.

Key No	Name	
A 2	Spirea Van Houtte, 6 to 4 feet	\$.50
B 6	Spirea Froebeli, 18 to 24 in.	2.10
C 6	Spirea A. Waterer, 15 to 18 in.	2.10
D 2	Forsythia Intermedia, 3 to 4 ft.	.80
E 2	Weigelas, assorted, 2 to 3 feet	.80
F 1	Mock Orange, 2 to 3 feet	.35
G 1	Deutzia, Crenata fl. pl., 3to 4 ft.	.40
H 1	Butterfly Bush, 2 year	.40
I 1	Abelia	.40
J 10	Japanese Barberry, 15 to 18 in.	2.00
K 5	Hydrangea, P. G., 18 to 24 in.	1.50
L 2	Snowberry, 2 to 3 feet	.80
M 1	Common Purple Lilac, 3 to 4 ft.	.50
N 1	Althea 3 to 4 feet	.40
O 1	Calycanthus, 2 years	.50

Regular Value\$13.55

Special Price, \$12.50

EXPRESS PREPAID

If you want evergreens, we would suggest: A baker's Pyramid at F and M, a Berkman's Golden at D and D, a Bonita at A and A.

If you want to do this, deduct the price of the shrubs listed here and order from catalogue the evergreens mentioned.

Evergreens are sent express collect, but we will add other shrubs and evergreens, free, of sufficient amount to pay the express on the shrubs.

FLOWER SEED

If you have bought many flower seed, you are aware of the fact that many seed catalogued are of varieties almost worthless. Our space is limited, so are only listing such varieties as are winners, no junks.

KOCHIA, OR BURNING BUSH

Forms regular pyramids from 2 to 3 feet high having a cypress-like appearance. Autumn coloring has been given it another name. "Mexican Fire Plant." Pkt., 5c.

MARVEL OF PERU—FOUR O'CLOCK

Handsome, free-flowering, sweet scented; blossoms variegated and striped. Fine mixed—Pkt., 5c; oz., 10c; ¼ lb., 35c.

STOCKS

Our assortment of seed includes the best colored and double kinds. Pkt., 10c.

SUNFLOWER

GOLDEN BALL (Helianthus)—Far superior to common Sunflowers. The large, rich, yellow flowers are produced on each branch. Makes a beautiful hedge. A beautiful large double variety. Pkt., 10c.

RED, OR SINGLE FLOWERING—The single Sunflowers are indispensable for cutting. This new sunflower we believe to be a novelty of real merit, and feel sure it will come into general use. Planted as a border or in front of taller shrubbery or along a wall, they are very showy. Pkt., 10c.

DWARF NASTURTIUM—Pkg., 5c; oz., 15c.

TALL NASTURTIUM—Pkg., 5c; oz., 15c.

SWEET PEAS—Pkg., 10c; oz., 20c; ¼ lb., 50c. Varieties: Spincer Mixed. Fine for cut flowers.

SWEET ALLYSUM—(small for borders)—Pkg., 5c.

CENTAUREA (Corn Flower)—Coronarium, tall, double, mixed. Pkt., 10c.

CELOSIA OR COCKSCOMBS—The Cockscombs are tender annuals, requiring good soil. If cut before they fade, the head may be preserved during the winter 12 inches across; in flower 90 days. Fine mixture. Pkt., 10c.

PHLOX—Drummonds mixed. pkg., 5c. Fine for beds.

ASTERS—Mixed, pkg., 5c. Fine for cut flowers.

SNAPDRAGON—Pkg., 5c. See page 15.

COSMOS—Mixed, pkg., 5c.

CYPRESS VINE—Pkg., 5c. A great climber.

MORNING GLORY—Japanese mixed. Pkg., 5c.

PINKS—For beautiful and lasting cut flowers, ease of culture and freedom of bloom, the hardy garden pink has no superior among the annuals. Pkt., 10c; ¼ oz., 25c.

RACINUS, OR CASTOR OIL BEAN—Perfection Giant, Pkt., 5c; oz., 20c.

LARKSPUR—Double, mixed, pkg., 5c.

POPPY—Mixed, pkg., 5c. Very fine.

ZINNIA—Giant Double, mixed, pkg., 5c.

LANTANA—Fine mixed, pkg., 5c.

MARIGOLD—Pkg., 5c.

SCOBIOSO—Mixed, pkg., 5c.

CALENDULA—Pkg., 5c.

DIGITALIS—Mixed, pkg., 5c.

Taylor's Plants and Seed for the farm and Garden

Sweet Potato Plants

(Ready for Shipment April 25th)

We can supply any quantity from the small garden to the largest fields. Diversify your crop, cotton is too cheap—grow Sweet Potatoes.

Our seed are selected from the best potatoes obtainable in this vicinity and treated as the Government suggests.

We have been bedding several hundred bushels for a good many years and we claim to know a little about growing Sweet Potato plants, and in buying from us you get the benefit of all our experience. Our potatoes are bedded in soil each year that potatoes were never grown or bedded in before. We pack well and guarantee plants to arrive in good condition.

PRICES ON EITHER VARIETY OF SWEET POTATOES—Postage or Express Paid—100 for 30c; 200, 55c; 500, \$1.30; 1,000 \$2.50; 5,000 or over, \$2.40; per 1,000; 10,000 or over, \$2.25 per 1,000. If you can use a larger amount write for special prices.

DIFFERENT VARIETIES—We only grow Nancy Hall and Porto Rico. These are best varieties to be had, in our opinion.

The above prices are the market price at the time of going to press. If the market should decline, our prices will be lower.

Bermuda Onion Plants

Bermuda Onion plants are growing more and more in favor every year. Onions grown from plants mature quicker, and sweeter, will keep longer—a sure crop if planted early. To get the best results they must be planted early. If you wait until May to transplant the chances are you will fail to get satisfactory results.

100 for 25c; 500 for 75c; 1,000 for \$1.35

Write for prices on larger quantities

PEPPER PLANTS

SWEET OR HOT

(Ready for Delivery After March 20)

Prices of all pepper plants postpaid as follows: 12 for 20c; 25 for 35c; 50 for 60c; 100 for \$1.00.

Planted near together, sweet and hot Pepper will mix, causing all to be hot.

RUBY KING—A pepper of large size, fine for truck growers. A beautiful ruby red when ripe. Good plants from beds. 500 for \$4.00.

CHINESE GIANT—Plants dwarf, mammoth sized fruits. A late variety; grown heavy on account of its mammoth size.

PIMENTO PEPPER—Very mild; most all meat; fine flavor; requires rich, moist soil. scarlet and quite hot. ? ? ? ?etaoinshrd

RED CHILI—Fruit small, pointed bright scarlet and quite hot.

Cabbage Plants

READY NOW

100, 35c; 250, 15c; 500, \$1.25; 1,000, \$2.00

EARLY JERSEY WAKEFIELD—One of the most popular of the extra early varieties; not so large, but fine quality; very solid; fine leaves, sure to head.

CHARLESTON WAKEFIELD—This is a very valuable sort; it only a few days later than the Early Jersey, but is much larger; is a standard, early variety in the south and proves to be one of the best known for the clay and heavy soil; heads solid.

FLAT DUTCH—Large, flat heads. A good variety.



AFTER APRIL 10 YOU MAY DEDUCT 20 PER CENT ON THE CABBAGE PLANT ORDER.

Taylor's Choice Tomato Plants

READY MARCH 15, AND LATER

Having had much experience in growing Tomato plants both wholesale and retail, we feel that we will be able to please the most exacting.

PRICES—All Tomato Plants at the following prices unless stated otherwise. Postpaid—12 for 15c; 25 for 25c; 50 for 45c; 100 for 75c; 250 for \$1.35; 500 for \$2.50. If you want a larger amount, write for prices. When it comes to Tomato Plants, we are headquarters. Below you will find some varieties quoted in quantities.

NOTICE—20 PER CENT DISCOUNT—Orders for 100 or more Tomato Plants shipped after May 1, you may deduct the difference, or send full price, and we will send extra plants.

POT GROWN TOMATO PLANTS

We grow Beefsteak, Earliana Fifty-Day and Stone Plants in flower pots. For extra early tomatoes, try a few plants this being the quickest way known to have early tomatoes. Once you try them, you will want no other, if it is early tomatoes you are after. Nice large plants, well rooted, shipped with soil on them. 5c each; 12 for 45c; 100 for \$3.00. Express or Postage Paid. At Greenhouses, 35c dozen.

PONDEROSA—Of perfect shape. Very large, extra prolific, early to late. Quality fine. Color pink. Too well known to need much description. A winner. 1,000, \$4.00; 2,000, \$7.00.

EARLIANA—An extremely early, smooth, bright red tomato; good sizes and vines small but vigorous. This is the tomato that delivers the goods. 1,000 for \$3.50; 2,000, \$6.50.

ACME—Beautiful deep rose; solid; fine for market and family. A real main cropper.

PERFECTION—A standard early red variety. As now grown it is very similar to Chalk's Jewel. The fruit ripens early and bears until frost.

BEEFSTEAK—Without question this Beefsteak Tomato is the king of all tomatoes. The world's unbeatable tomato for the main crop. Ripens early and continues to fruit for a long period. Large, a splendid keeper very productive. Fine color. Flavor cannot be beat.

1,000 for \$4.40.
2,000, \$7.50.

NEW STONE — A standard, main crop; red medium early, a fine canner. Very popular.

1,000, \$3.50.
5,000, \$6.00.

GIANT EVER-BEARING—A beautiful red wonderful yielder; ripe fruit from early summer until killed by frost; medium size.

DWARF CHAMPION, OR TREE TOMATO — The most popular of the dwarf variety in cultivation. Study, stocky plants, are of upright growth, need no support. Produces handsome purplish red fruits that begin to ripen early and are produced throughout the season.

MATCHLESS—A very dependable, large and smooth tomato, second early sort, makes a good coming variety.

RED ROCK—One among the best. Its size, beauty, shape, color, flavor, durability and productiveness makes it desirable to growers. Similar to Stone.

"FIRST OF ALL"—Originators claim this to be the earliest, largest, smoothest, finest flavored extra early tomato in cultivation. Color, red; tough skin, good shipper, fine for market or table. Don't fail to try it.

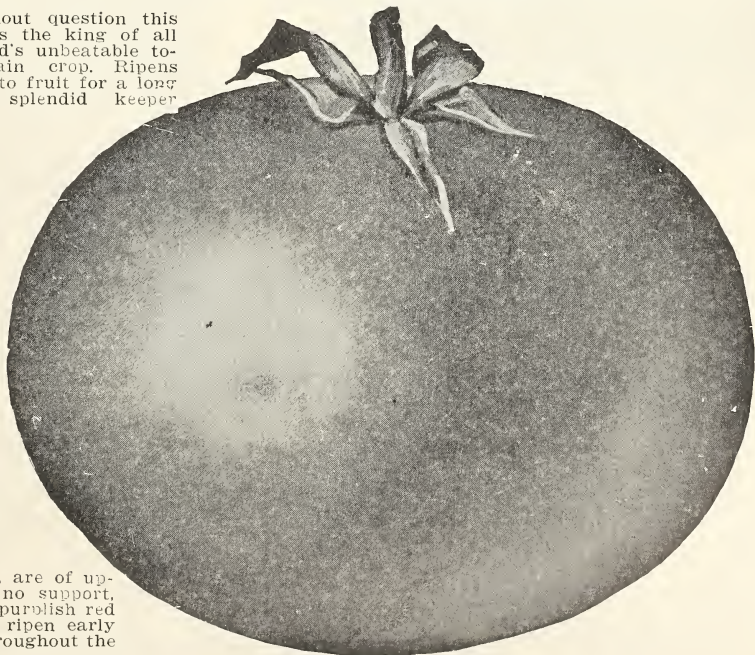
MARGLOBE (WILT RESISTANT)—This variety is a cross between Marvel and Globe, producing a heavy yield, of large smooth, solid, red fruit which ripens medium early. It is somewhat larger than the Stone, and is highly recommended because of its wilt-resisting features. The havoc wrought by wilt in Tomatoes is serious, if you have been disappointed in growing tomatoes because of this disease, you will be interested in this hardy, wilt-resistant sort.

JOHN BAER—Early, smooth, bright scarlet; has short, vigorous vines; has less seeds than Earliana and a little later.

OLD DUKE OF YORK—Claimed by the Originators to be Blight-Proof—This is a new one, the originator, made such great claims that we wanted to try it. A heavy cropper, ripens evenly to the stem; produces until frost; quality the very best; solid and meaty. A fine shipper.

BONNY BEST—Fruit generally borne in clusters. A good, uniform, early tomato; scarlet red.

BUCKBEE'S FIFTY-DAY—Mr. Buckbee, the originator, claims that good plants will produce ripe fruit in fifty days after set in the ground. Hence the name, "50-Day." If it is early Tomatoes you want, try this one. Our plants are grown from originators' seed only. 1,000 for \$4.50; 2,000 for \$7.50.



WASHINGTON ASPARAGUS—One of the best; it has thick and heavy shoots, long, straight and closely folded tips; rapid grower. Set four inches deep; fertilize well. Price, two year roots, 6 for 20c; 12 for 35c; 25 for 60c. Postpaid.

GARDEN SAGE—Once planted, will last for years. Grow a few and have plenty of fresh or dry sage the year round. Nice plants, 10c each; three for 25c. Postpaid.

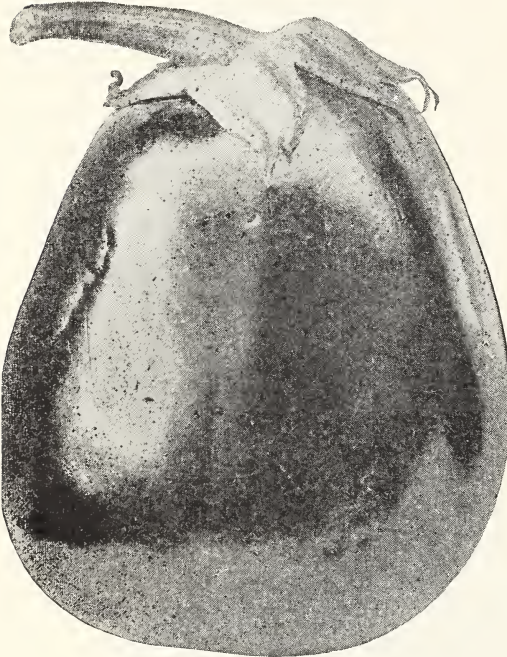
ENGLISH MINT—10c each, three for 25c. Postpaid.

CATNIP—10c each, three for 25c. Postpaid.



TOPEPO

This is a new vegetable that has lately had considerable publicity. Cross between the Bell pepper and New Stone Tomato. Looks more like a pepper than a tomato. Not only the outward appearance, but inside it resembles a pepper, and also tastes like a good sweet pimento or mango pepper. It is about as large as a tomato. The quality is fine and can be baked, stuffed or in soups, chowders, dressings and other table delicacies, or any way that a sweet pepper can be used. It originated in California. One dozen, 25c; 25 for 40c; 50 for 55c. Postpaid.



EGG PLANT

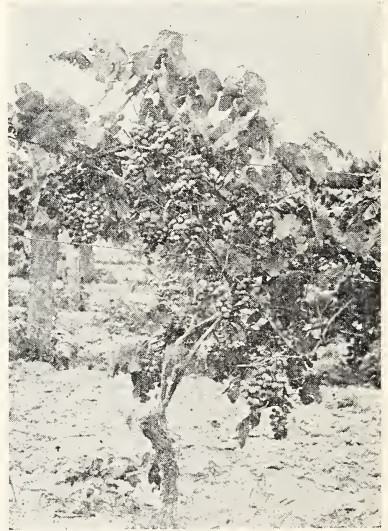
Fruit a rich, shining purple; cook by cutting in one-fourth inch slices. Pare, let stand in salt water an hour. Drain and dip in egg and cracker crumbs. Fry brown. Plants from hot bed, 20c dozen; pot grown, 5c each.

CELERY PLANTS—If you like Celery, try a few plants. From beds, 20c a dozen, 2 dozen, 35c. Pot grown, 5c each. Ready April 1st. Postpaid.

RHUBARB ROOTS—Rhubarb is the earliest plant you can pluck from your garden in the spring; makes fine pies and sauces; nice large roots. 10c each, three for 25c; dozen, 90c Postpaid.

HORSE RADISH ROOTS—For best results plant in a moist, partly shaded corner. Nice roots, 2 for 10c; 6 for 25c; 12 for 40c. Postpaid.

Grapes



ALL GRAPES 2 YEARS OLD

CONCORD GRAPE—A standard grape. Blue-black; excellent flavor; hardy and very productive. 15c each; dozen \$1.50.

NIAGRA—Large fruit, large bunches Greenish white, changing when fully ripe to pale yellow. 15c each; dozen, \$1.50.

MOORES EARLY—Heavy, early producer. Popular for home and market, 15c each; dozen, \$1.50.

CATALPA—Blue-black; hardy and productive. 15c each; dozen, \$1.50.

GARDEN SEED

We are only listing the standard varieties which are well known, and do not need a description. You cannot go wrong on these well known varieties.

We give no warranty, expressed or implied, as to description, quality, productiveness or any other matter of any seeds we send out, and we will not be in any way responsible for the crop.

BEETS—All varieties: pkg., 5c; oz., 10c; ¼ lb., 25c; 1 lb., 85c. Varieties: Crosbys Egyptian, Detroit Dark Red, Dewings Blood Turnip, Early Blood Turnip.

TOMATOES—At this money saving price, postpaid: pkg., 5c; oz., 25c; ¼ lb., 90c; 1 lb., \$2.90. New Stone, Favorite, Greater Baltimore, Perfection, Matchless.

RADISHES—At prices that talk: pkg., 5c; oz., 10c; ¼ lb., 25c; 1 lb., 85c. Early Scarlett White Tip, Icicle, French Breakfast.

CUCUMBER—Pkg., 5c; oz., 15c; ¼ lb., 35c; 1 lb., \$1.10. Boston Pickling, Early White Spine, Early Green Cluster, Jersey Pickling, Davis Perfect.

LETTUCE—Pkg., 5c; oz., 15c; ¼ lb., 45c postpaid. Varieties: Big Boston, Early Curled Simpson, Hanson, Prize Head.

GARDEN PEAS—Pkg., 10c; ¼ lb., 20c; 1 lb., 20c. Varieties: Alaska, American Wonder, North Excelsior.

PARSNIPS—Pkg., 5c; oz., 10c; ¼ lb., 30c.

SWEET PEPPER—See Pepper Plants.

MUSTARD—Fancy Curled, pkg., 5c; 1 oz., 10c; ¼ lb., 30c.

NEW GIGANTIC TASMANI BEAN

A Wonderful Novelty.

This Bean comes to us highly recommended by a large wholesale seed house in the north as follows it is more like a cucumber or melon than a bean, grows very large, some beans weighing 20 lbs. A real delicacy superior to other vegetables. It can be prepared for the table in many ways, fried baked or boiled. It is most luscious in flavor. One of these monstrous fruits will satisfy a family of seven and have some left. The fruit weighs as high as 20 lbs., but are best when about 6 pounds. A very heavy yielder, easy to grow. More mature fruits stored in a cellar will remain in good condition until Christmas. Culture some as watermelons; not more than two or three seed to hill.

TO COOK—Slice thin, stew in butter 30 minutes. Add row chopped onions, stew 5 minutes long. Makes a fine dish that will take place of choice meat stews. **Packet, 10c.**

CABBAGE—At the following low prices: postpaid: Big pkg., 10c; oz., 30c; ¼ lb., \$1.00; 1 lb., \$2.75. Varieties: Early Jersey, Wakefield, Charleston Wakefield, All Season, Succession, Early Drumhead, Late Drumhead.

OKRA—Pkg., 5c; oz., 10c; ¼ lb., 30c. Varieties: Dwarf Green, French Market.

WATERMELONS—Pkg., 5c; oz., 15c; ¼ lb., 40c; 1 lb., \$1.00. Varieties: Irish, Gray, Kleckley Sweet, Tom Watson, Halberts Long, Monte Christo, Georgia Rattlesnake.

CANTELOUPE AND MUSKMELON — Pkg., 5c; oz., 15c; ¼ lb., 30c; 1 lb., 80c. Varieties: Rocky Ford, Banana.



You can grow fine plants if you will use Vigoro Plant food. We use this on our plants.

Small package 10c

Five-pound package, 50c at green house; 65c delivered.

We can also furnish it in 25, 50 and 100 pound bags.

Special prices on lots. Write for prices.

If You Don't Find It In the Catalogue—Write Us!

INDEX

	Page		Page		Page
A		Elephant Ear	8	Periwinkle	6
Angel Trumpet	10	Evonymous Japanica	17	Poplars	18
Asparagus	22	Erborvitae	18	Petunias	15
Alternantheras	15			Purple Plant	9
Artillery Plant	10	F		Pandanus Veitchi	9
Alocasia Illustris	13	Flowering Almond	17	Pansies	9
Acalpha	13	Flowering Locust	17	Phlox	10-15
Abution	12	Flowering Peach	7	Perennial Sweet Peas	14
Antigon Lephropsus	10	Ferns	7	Philadelphus	17
Allysum	7	Euchsias	6	Privet	16
Amaryllis	10	Fire Dragon	6	Pomegranite	16
Asters	10	Forsythia	13		
Ageratum	10	Fancy Leaved Caladium	8	R	
Adams' Needles	18	Flowering Crab	16	Rhubarb	22
Atheas	17	Figs	16	Royal Purple Plant	9
Abelia Grandiflora	17			Rubber Plant	8
Aspidistra	15	G		Russelia Elegantissima	10
Arizona Cypress	21	Green Sheet Moss	4	Roses	3-4
Arbor Vitae Chinese	21	Gladiolus	13	Rudbeckia	14
American Elm	18	Geraniums	5	Red Hot Poker	14
		Grass Plants	14	Rose of Sharon	17
B		Golden Glow	14	Red Branched Dogwood	17
Bermuda Onion	20	Golden Bells	17	Red Barbory Thunburgi	16
Begonia	17	Grape Vines	22		
Brazilian Plume Plant	15	Golden Elder	16	S	
Banana	5			Sweet Potato Plants	20
Box Collections	4	H		Sage	20
Basket Collection	4	Hanging Baskets	4	Sweet Pepper	20
Butterfly Bush	16	Horse Radish	22	Salvia	8
Bush Honeysuckle	17	Hot Pepper	20	Scarlet Sage	8
Berbis Thumberg	16-17	Hibiscus	12-14-17	Sword Cactus	8
Begonia	6	Hyacinths (Water)	6	Sultan's	5
Bakers Pyramidal Arbor Vitae	18	Hydrangeas	12-17	Sansverria	9
Berkmans Dwarf Golden Arbor Vitae	18	Heliothropes	8	Snake Plant	9
Bonita Arbor Vitae	18	Hardy Phlox	15	Scarlet Fountain Plant (See Russellia)	10
Bird of Paradise	16	Hills of Snow	17	Strobilanihus Oyerianus (See Royal Purple Plant)	9
Box Elder	18	Honeysuckle Vine	16	Shasta Daisy	14
Bleeding Heart	14			Snap Dragon	8
		I		Spirea	16-17
C		Ivies	15	Syringia	16
Clematus	28	Ipathiens	5	Snow Berry	16
Cabbage Plants	20	India Rubber	8	Snow Ball	16
Cabbage Seed	23	Ice Plants	10	Sycamore	18
Celery Plants	22	Iris	15		
Catnip	22	Irish Juniper	18	J	
Cannas	11			Jasmines	28
Coleus	7	J		Jew	15
Cape Jasmine	13-16	Japonicas	17	SEED—	
Chyryanthemums	11	L		Flower Garden	19
Caladium	8	Lombardy Poplar	18		23
Cinnamon Vine	13	Lantanas	9	T	
Cupheas	9	Lady Finger	10	Tomato Plants	21
Cigar Plant	9	Lillies	10	Tiger Plant	9
Cactus	13	Lemons	9	Trailing Velvet Plant	10
Comet Plant	13	Lathyrus	14	Tritoma	14
Carnation	10	Liliac	16	Tramrix	17
Calla Lily	10	Locust	17	Topepo	22
Collections of Plants	4	Ladies Ear Drops	6	Texas Glanca	18
Crepe Myrtle	17	M		U	
Cornus Sibirica	17	Magnolia	18	Umbrella Plant	10
Cedrus Deodra	18	Mint	22	Umbrella China	18
Catalpa Bungeri	18	Moss	4	V	
Catalpa Speciosa	18	Moon Vines	8	Vincia Varigata	15
Carolina Poplar	20	Mountain Rose	10	Vincia	6
Cornus	17	Mallow	14	Verbena	11
Calycanthus	16	Mock Orange	16	Velvet Plant	10
		Marigold	6	Vigoro	23
D		Matrimony Vine	16	W	
Day Lily	15	Mulberry	18	Water Hyacinths	6
Dwarf Coleus	15	Magnolia Grandiflora	18	Wandering Jew	15
Dahlias	12	O		Wisteria	16
Daisies	14	Oleanders	9	Weigelas	17
Delphinium	14	Oranges	9	Willow	16-18
Deutzias	17	Onion Plants	20	Y	
Dusty Miller	8	P		Yuca	14
		Potato Plants	20	Z	
E		Pie Plants	22	Zineas	9
Egg Plant	22	Pepper Plants	20	Zangibar Balsam	5
Easter Greeting	5	Pilea	9	Zebra Plant	14
Eulalia Japanica	14	Pelargonium	5		
Euphorbia	10	Peonies	9		

If You Don't Find It In the Catalogue—Write Us!

Order Sheet for High Grade Bulbs, Flowers and Plants

W. V. TAYLOR'S GREENHOUSES

Russellville, Arkansas



Extra Plants Free of Charge

will be placed in each order for 50c or more. The larger the order the more plants free. Our Selection.

Amount Enclosed

Check

Postal M. O.

Express M. O.

Currency

Stamps

When Wanted

WRITE VERY PLAINLY—OR, BETTER, PRINT NAME AND ADDRESS

DATE 1930

NAME

POSTOFFICE

R. F. D. No. BOX STREET

COUNTY STATE

If out of any certain article, shall we substitute nearest to it?

Or shall we return money for articles that are sold out?

Would Express be as convenient to you as mail?

(Large packages are sometimes sent by express.)

NOTICE—Each year we bed several hundred bushels of Sweet Potatoes—Nancy Hall and Porto Rico. Sometimes we are short on one variety, and ahead on the other. If you are not particular about variety, let it be known by giving first and second choice. But if you want one certain kind, just, “please do not substitute” and we will send that variety or return the money.

Number	NAME OF BULBS OR PLANTS	Dollars	Cents

AMOUNT CARRIED FORWARD (OVER)

CHOICE CUT FLOWERS

For All Occasions



Our Cut Flower Department has grown until we were forced to build a new flower shop, which we did, of native stone and stucco. We now have an up-to-date flower shop and are still gaining new customers. We specialize in designs for funerals, which we make and ship anywhere in Arkansas or adjoining states. We have recently shipped to Muskegee, St. Louis, Little Rock, and on to Mississippi, with reports that they arrived in good condition and were beautiful.

PHONE 326 IF IN NEED
OF CUT FLOWERS.

Our prices are reasonable.
Give us a trial.

BULBS FOR FALL PLANTING

This Fall we will have a full line of Hyacinth, Tulip, Crocus, etc. These we import direct from Holland. As we buy direct, and cut out several middle men, we will be prepared to make some real close prices on high grade bulbs. We cannot quote prices at this time. Write for prices, or better still, send the amount you want to spend for bulbs, and state the varieties wanted, we will do the rest. Satisfaction guaranteed or return bulbs and get all money back. Special prices on quantity lots to churches, Sunday Schools, societies, lodges, etc. *We both lose money if you don't get your bulbs from us.*

Remember—Taylor pays the transportation charges on everything, unless specifically stated otherwise. Our price to you is to you.

**"It's Not a Home
Until It's Planted"**



PINK BARNEY GERANIUM—Bright rosy pink with distinct white blotch in center; dwarf; compact white bloomer. Price, 15c each; three for 40c; six for 75c; twelve for \$1.25; postpaid.

NEW SUZANNE GERANIUM—Thrifty grower; large red balls of blooms; free bloomer; price, 15c each; three for 40c; six for 75c; twelve for \$1.25; postpaid.

BEDDER GERANIUM—For bedding out this one cannot be beat. Red, spangled with salmon. Price, 15c each; three for 40c; six for 75c; twelve for \$1.25; postpaid.



**We Specialize in Cut Flowers for
All Occasions.**

POSTMASTER—If unable to deliver, please send to someone interested in plants.

TO *U.S. Department of Agriculture*

Washington

D. C.

SEC. 435½ P. L. & R.
1-CENT PAID
PERMIT NO. 6.
Russellville, Ark.

CLEMATIS PANICULATA—Star shaped flower, creamy white color, fragrant; a good climbing vine and hardy; 50c each; postpaid.

CONFEDERATE JASMINE—A hard wood climber, or can be trained to bush form; large bunches of white flowers; jasmine perfumed. Price, 25c each; postpaid.

GERTRUM DELTUM—Day blooming jasmine; sweet scented, white flower; a quick growing evergreen shrub. Price, 15c; two for 25c; postpaid.

STAPHELIA CACIUS—A real novelty, hard to describe in words. Has a peculiar star shaped bloom with raised eye in center, with another star in the circle. A brownish yellow color. Price, 15c; two for 25c; postpaid.

CHESTRUM PAOLI—Night blooming jasmine; beautiful white flowers; produced in clusters; highly perfumed at night; a tender shrub; Price, 15c; two for 25c; postpaid.

RADIO RED GERANIUM—A new double red, pure vermilion scented; its clear brilliancy, displayed in thick clusters of large flowers; its drilling and satisfactory; does not burn or bleach. Price, 15c each; three for 40c; six for 75c; twelve for \$1.25; postpaid.

**HOW TO REACH
OUR GREENHOUSES**
From Depot North on
Oak towards Arkansas
Tech College for seven
blocks, then two blocks
east, to No. 501 Lincoln
Street.

PLANT ANOTHER PLANT—HELP BEAUTIFY THE WORLD