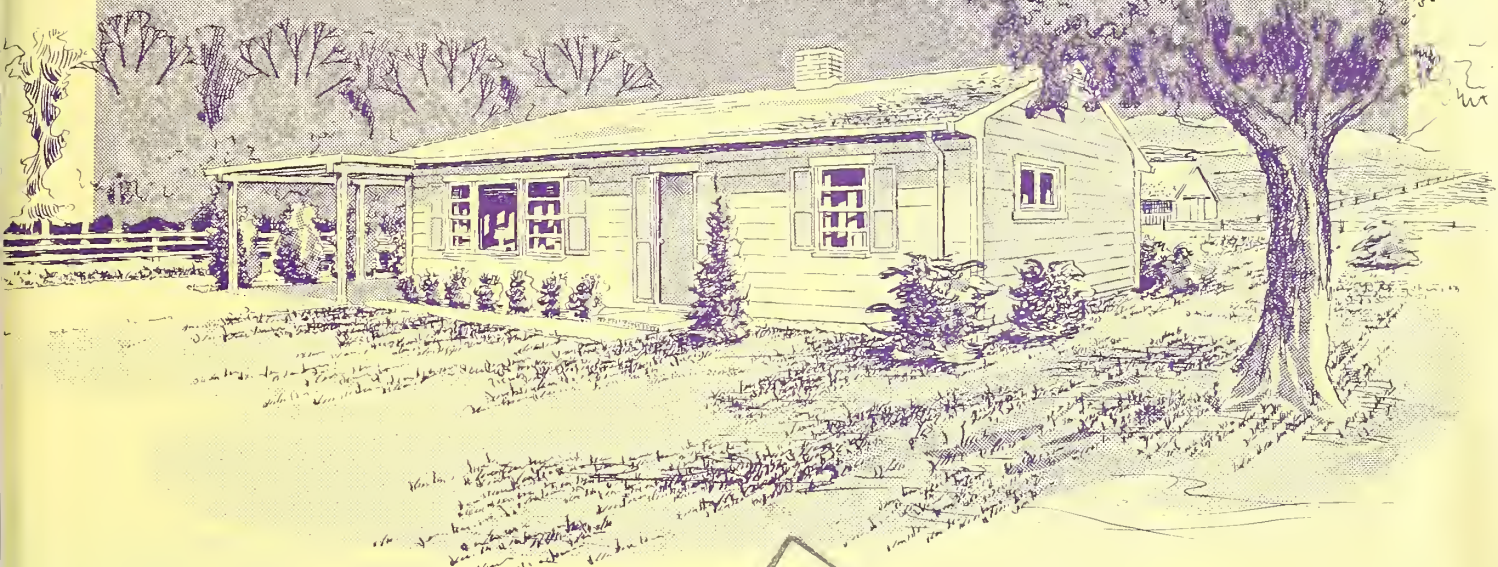


Fig 94 M
Misc. Pub. 915

1-Bedroom FARMHOUSE

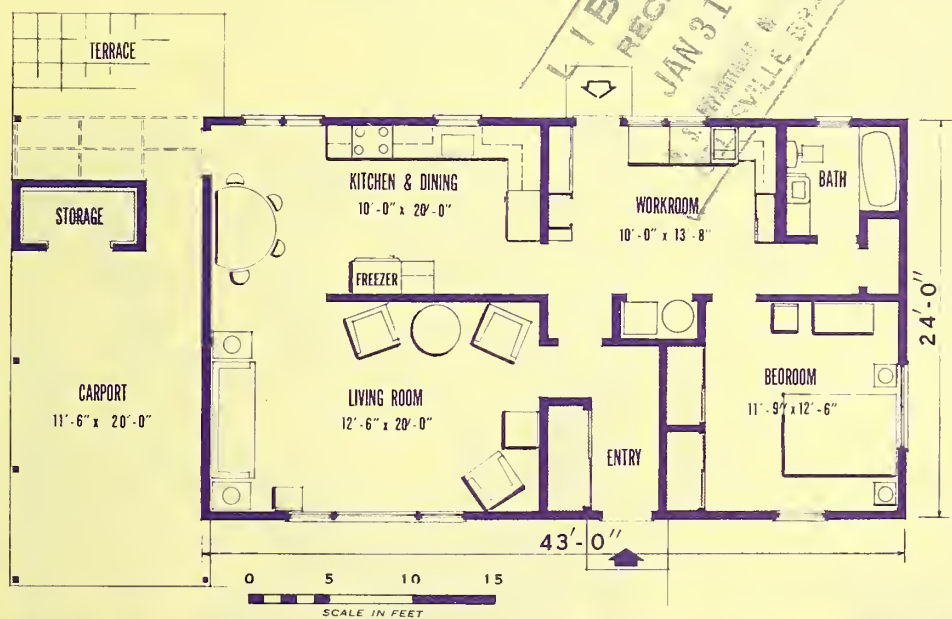
**COOPERATIVE
FARM BUILDING**
Plan No. 7154
(2-SHEETS)
PLAN EXCHANGE

**... SLAB ON GRADE
FRAME CONSTRUCTION**



This efficient house, rectangular in plan, is frame construction with concrete slab-on-grade and trussed roof. It provides comfortable living space for retired persons or a young couple. The center hall with liberal coat closet sets up a smooth traffic pattern providing good circulation to all areas.

LIBRARY RECEIVED
JAN 31 1963
MONTICELLO & ...



The L-shaped kitchen has ample space for preparing food. Its proximity to the terrace adds to the convenience of serving meals outdoors. Groceries can be easily carried from the car to storage facilities.

The bedroom with bath nearby is separated from the living and kitchen areas and is sound cushioned from the entrance hall by closet walls. A second bedroom could be added with entrance through the space now occupied by the linen closet.

Washington, D.C.

Issued December 1962

a flexible

WORKROOM

... sewing room

... laundry room

... storage room

... hobby room

This spacious workroom with its modern equipment and storage areas serves as a center for many household tasks and activities. To save steps, time, and energy, it is located near the kitchen, bathroom, and rear entrance. Here the farmer can hang his work clothes and wash up before he enters other areas of the house. Vegetables can be washed here before they are taken to the kitchen for processing. Storage is provided for canned goods and canning equipment. There is sufficient floor space for sewing, ironing, and children's play. For the older family, the space may well serve for hobbies in addition to the normal household activities.

A site plan is shown at lower right. The work area of the house should face the farm court, as indicated, so from the kitchen or workroom window the homemaker can check on the livestock or on any farm activities that may be in progress.

Developed by

AGRICULTURAL ENGINEERING RESEARCH DIVISION
CLOTHING AND HOUSING RESEARCH DIVISION
AGRICULTURAL RESEARCH SERVICE

For sale by the Superintendent of Documents, U.S. Government Printing Office
Washington 25, D.C. Price 5 cents

U. S. GOVERNMENT PRINTING OFFICE : 1962 OF - 664724

Complete working drawings may be obtained through your county agent or from the Extension agricultural engineer at most State agricultural colleges. There is usually a small charge.

ORDER PLAN NO. 7154, ONE BEDROOM FARMHOUSE

If working drawings of this plan are not available in your State, write to the U.S. Department of Agriculture, Agricultural Engineering Research Division, Plant Industry Station, Beltsville, Md. The U.S. Department of Agriculture does not distribute drawings, but will direct you to a State that does distribute them.

