

A map of the Vrané nad Vltavou area in the Czech Republic, showing the Vltava river and surrounding roads. The map is overlaid with numerous colored circular markers (blue, green, red) representing Wikishootme and Wikidata data points. The text 'Wikishootme Wikidata v mapě' is centered over the map in a large, bold, black font. Road numbers 102 and 1043 are visible on the map.

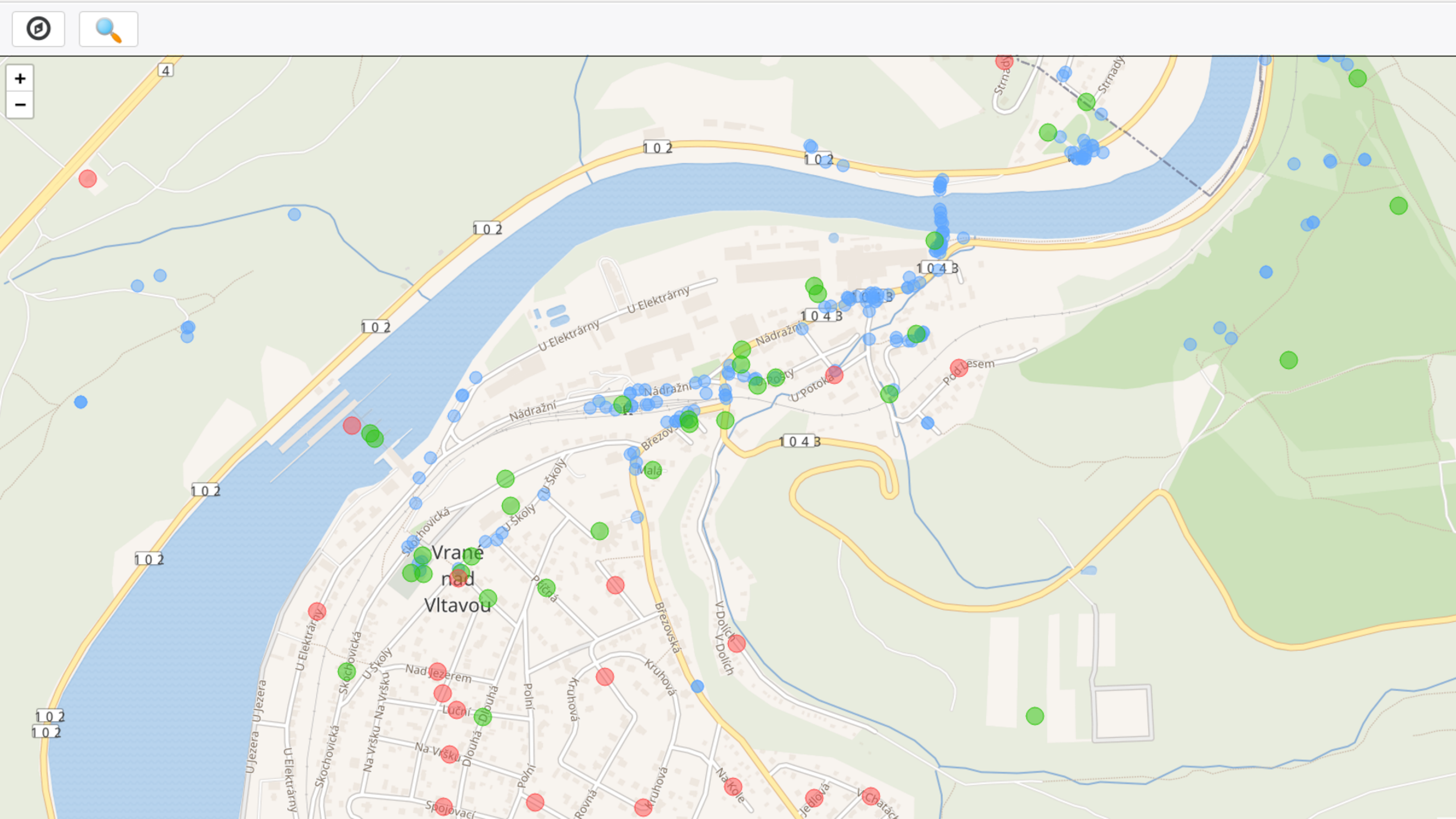
Wikishootme Wikidata v mapě

A map of the Vrané nad Vltavou area in the Czech Republic, showing the Vltava river and surrounding roads. The map is overlaid with numerous colored circular markers (blue, green, red) representing Wikishootme points. The points are distributed across the area, with a higher concentration near the river and along the main roads. The text 'https://tools.wmflabs.org/wikishootme' is overlaid in the center of the map.

<https://tools.wmflabs.org/wikishootme>

A map of the Vrané nad Vltavou area in the Czech Republic, showing the Vltava river and surrounding roads. The map is overlaid with numerous colored circles (blue, green, red) representing Wikidata items. The text 'Nástroj vizualizuje položky Wikidat na mapě' is centered over the map in a large, bold, black font.

Nástroj vizualizuje položky Wikidat na mapě

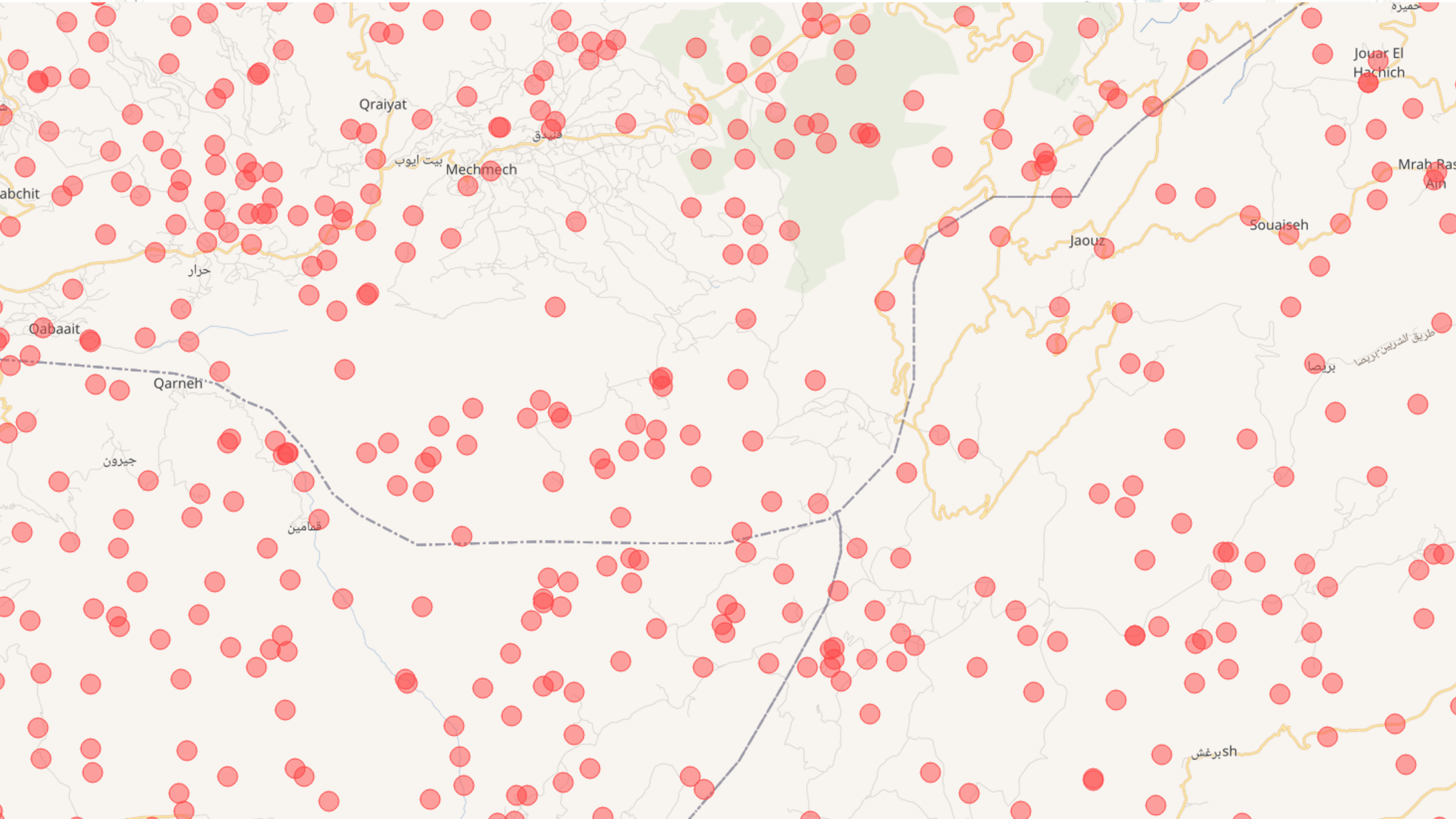


A map of the Vrané nad Vltavou area in the Czech Republic, showing the Vltava river and surrounding roads. The map is overlaid with numerous colored circles (blue, green, red) representing Wikidata photo search points. The text 'K hledání fotek pro položky Wikidat!' is centered over the map.

**K hledání fotek pro
položky Wikidat!**

A map of the Vrané nad Vltavou region in the Czech Republic. The map shows a network of roads, including a major road labeled '102' and several smaller roads like 'U Elektrárny', 'Nádražní', 'U Školy', 'Březovská', 'Kruhová', 'V Dolích', 'U potoka', and 'Pod lesem'. Numerous small, semi-transparent colored circles (blue, green, red) are scattered across the map, representing data points. A large, bold, black text overlay reads 'Podívejme se na mapu...'.

Podívejme se na mapu...



abchit

Qabaait

Qarneh

جبرون

قمامين

Qarayat

بيت ايوب

Mechmech

قندوق

Jaouz

Souaiseh

Jouar El Hachich

Mrah Ras Ain

بريضا

طريق الشربين بريضا

شبرغش

A map of the Vrané nad Vltavou area in the Czech Republic, showing the Vltava river and surrounding roads. Numerous red dots are scattered across the map, indicating specific locations. The text is overlaid on the map.

**Červené tečky =
položky bez fotografie
(P18)**



Hanělova

Hanělova

Hanělova

Hanělova

Hanělova

Na Hrádku

Na Hrádku

Horní

Horní

Pod Nivou

Pod Nivou

Pod Nivou

Hrádek

Skalní

Skalní

U Barborky

Horní

Týnská

Stará

Stará

Zadní

Horní

Pomezní

Pomezní

Skalní

B 51

Horní

Zadní

Pomezní

Úzká

Na Kopečku

Blahoslavova

Blahoslavova

Na Úboří

ZÁMOSTÍ

PODKLÁŠTEŘÍ

9. května

9. května

Zadní

Zadní

Na Výstupu

Tiché nám.

Sunná

Subakova

Subakova

Havlíčkovo nábř.

L. Pokorného

L. Pokorného

Havlíčkovo nábř.

Žerotínovo nám.

Žerotínovo nám.

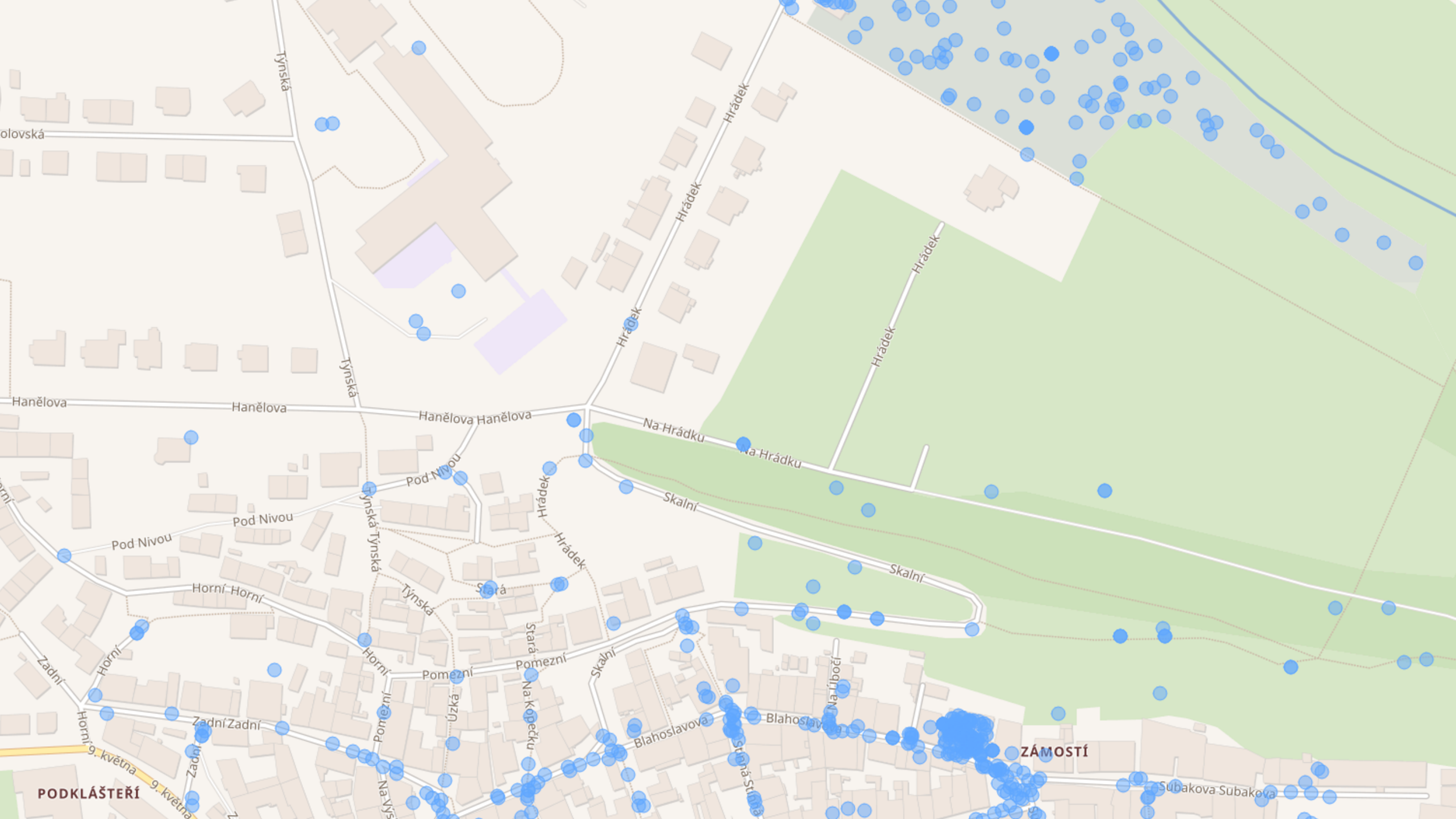
Žerotínovo nám.

9. května

Pod Zámkem


A map of the Vrané nad Vltavou area in the Czech Republic. The map shows the Vltava river flowing through the center. Numerous small, semi-transparent dots are scattered across the map, primarily along the riverbanks and in the surrounding residential areas. Some dots are green, while others are blue. The text 'Zelené tečky = položky s fotografií (P18)' is overlaid in the center of the map in a large, bold, black font. The map includes various street names such as 'U Elektrárny', 'Nádražní', 'U Skoly', 'Skochovická', 'V Dolích', and 'Kruhová'. Road numbers '102' and '1043' are also visible.

**Zelené tečky =
položky s fotografií
(P18)**

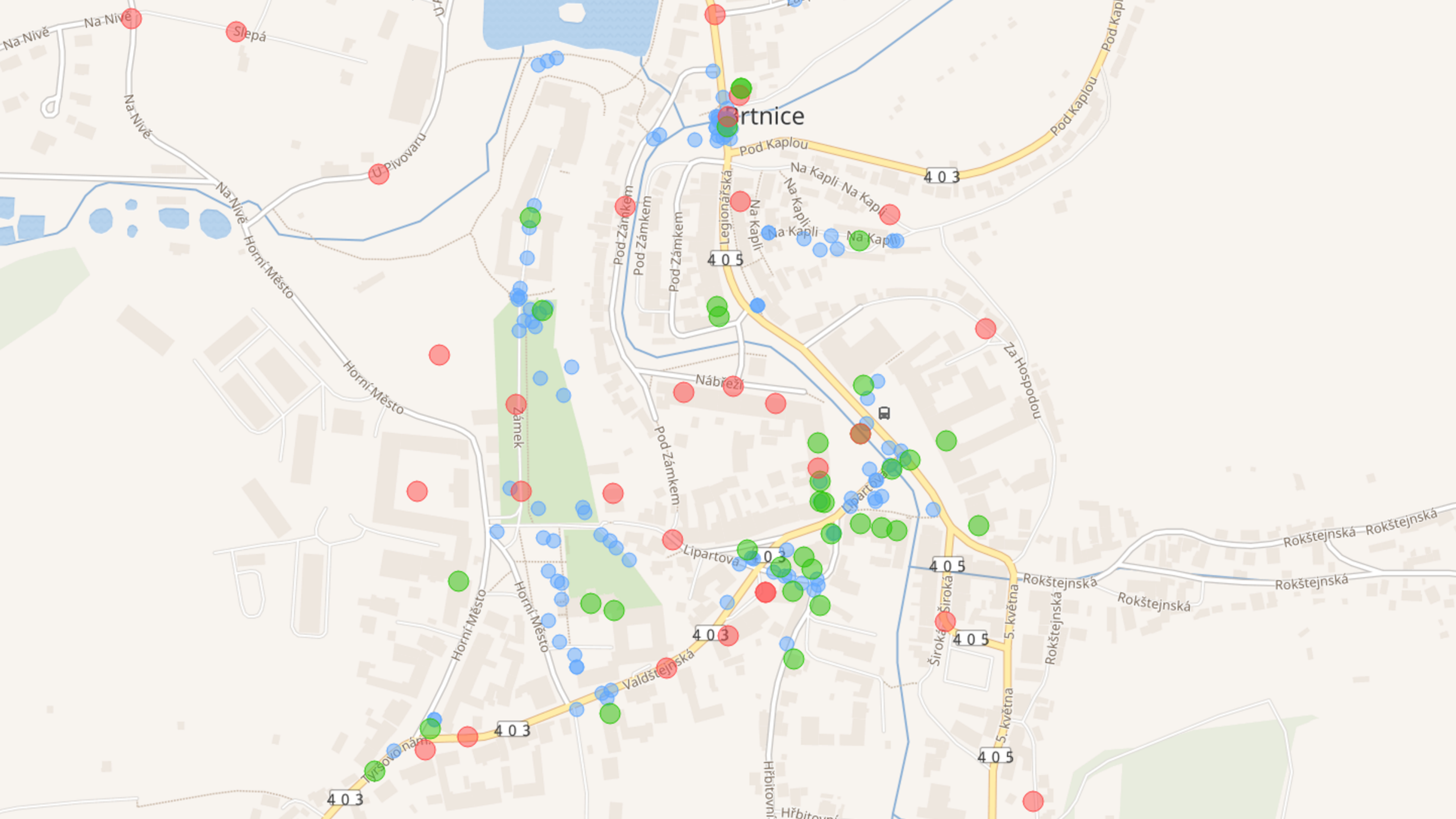


PODKLÁŠTEŘÍ

ZÁMOSTÍ

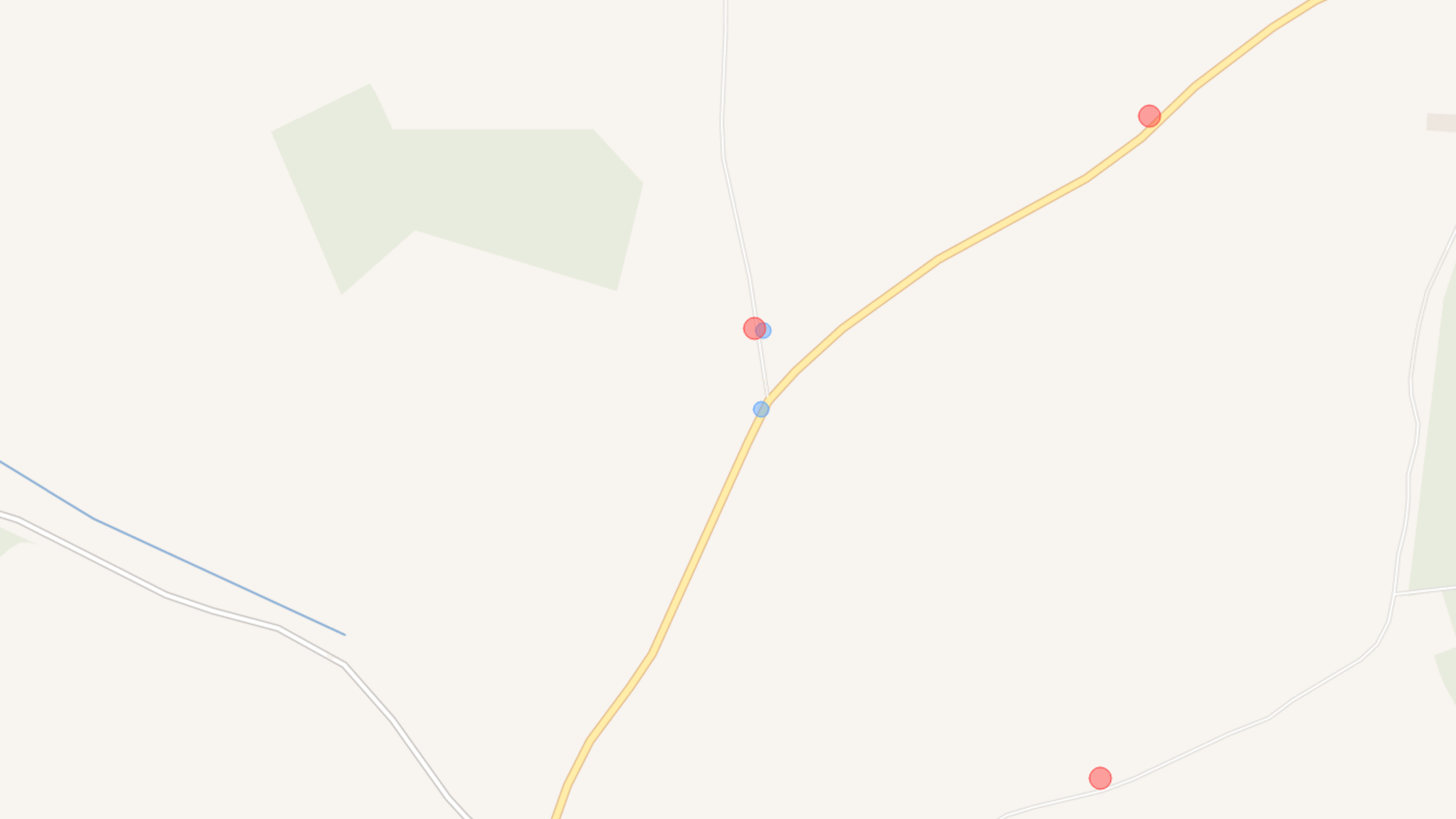
A map of the Vrané nad Vltavou area in the Czech Republic. The map shows the Vltava river flowing through the center. Numerous colored dots (blue, green, red) are scattered across the map, primarily along the river and near the town. The text 'Modré tečky = fotografie' is overlaid in the center. The map includes labels for various locations such as 'U Elektrárny', 'Nádraží', 'V Dolích', and 'Kruhová'. Road numbers 102 and 1043 are also visible.

**Modré tečky =
fotografie**



A map of the Vrané nad Vltavou area in the Czech Republic. The map shows the Vltava river flowing through the center. Several roads are marked with numbers like 102 and 1043. Numerous red and blue circular markers are scattered across the map, primarily along the river and near the town center. The text 'Červená a modrá vedle sebe!' is overlaid in the center of the map.

**Červená a modrá
vedle sebe!**



Dřevěný kříž mezi Utěchovičkami a Chvojnovem ✕


pamětní kříž v obci Pelhřimov, okres Pelhřimov

Q67182080

povolit nahrávání

49.464875, 15.277935 🏠

[Route on Google Maps](#)

A map of the Vrané nad Vltavou area in the Czech Republic. The map shows the Vltava river flowing through the center. Major roads are marked with numbers like 102 and 1043. Various localities and landmarks are labeled, including 'U Elektrárny', 'Nádraží', 'V Dolích', and 'Kruhová'. Numerous small, semi-transparent colored circles (blue, green, red) are scattered across the map, representing data points or photo locations. A large, bold, black text overlay is centered on the map.

**Co je na blízké
fotce?**

Crucifix by Chvojnov



Crucifix by Chvojnov.jpg

[New Wikidata item based on this image](#)

49.464861111111, 15.278027777778 🏠

[Route on Google Maps](#)

A map of the Vrané nad Vltavou region in the Czech Republic. The map shows the Vltava river flowing through the center. Major roads are marked with '102'. Numerous small, semi-transparent colored circles (blue, green, red) are scattered across the map, representing data points or locations. The text 'Propojíme!' is overlaid in the center in a large, bold, black font. Labels on the map include 'U Elektrárny', 'Nádražní', 'U Potoka', 'Pod Lesem', 'V Dolích', 'Kruhová', 'Na Vršku', 'Dlouhá', 'Luční', 'Příčná', 'U Školy', 'Skochovická', 'U Jezera', and 'Vrané nad Vltavou'.

Propojíme!

Crucifix by Chvojnov



[Crucifix by Chvojnov.jpg](#)

New Wikidata item based on this image

49.4648611111111, 15.2780277777778 

[Route on Google Maps](#)

A map of the Vrané nad Vltavou area in the Czech Republic, showing the Vltava river and surrounding roads. The map is overlaid with semi-transparent colored circles (blue, green, red) and road labels like '102' and '1043'. The text 'Zkopírujeme název obrázku' is centered in large black font.

**Zkopírujeme název
obrázku**

Dřevěný kříž mezi Utěchovičkami a Chvojnovem 

pamětní kříž v obci Pelhřimov, okres Pelhřimov
Q67182080

[povolit nahrávání](#)

49.464875, 15.277935 

[Route on Google Maps](#)

- Speciální stránky
- Trvalý odkaz
- Informace o stránce
- URI pojmu
- Citovat stránku
- Automaticky přidat

stát ↑ ↓ Česko editovat

▶ 1 reference

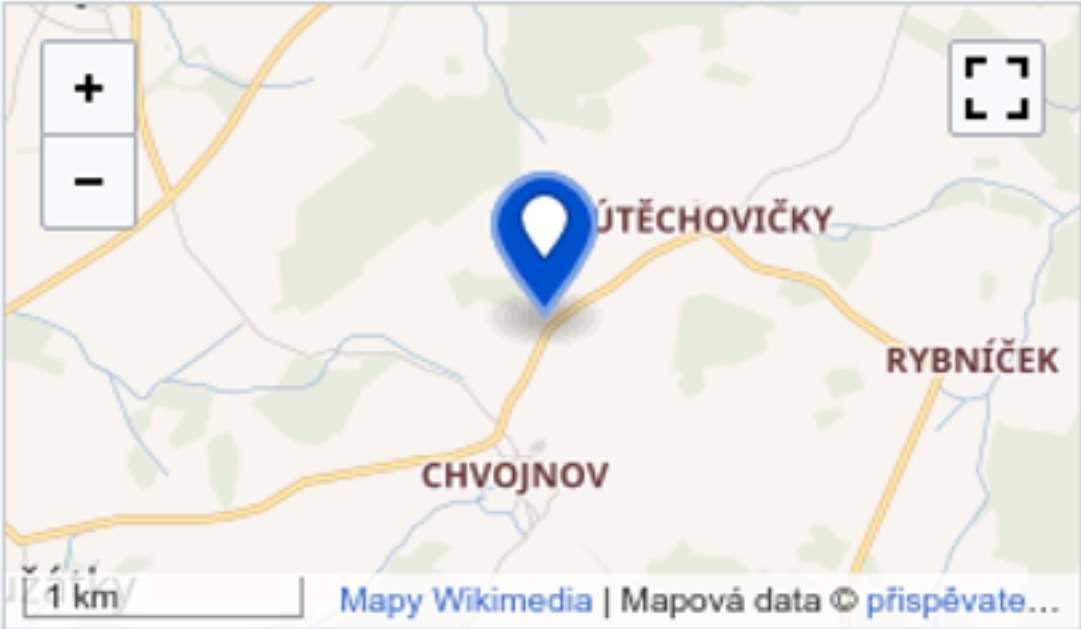
+ přidat hodnotu

nachází se v administrativní jednotce ↑ ↓ Pelhřimov editovat

▶ 1 reference

+ přidat hodnotu

zeměpisné souřadnice ↑ ↓



49°27'53.550"N, 15°16'40.566"E

▶ 1 reference

+ přidat hodnotu

editovat

obrázek ↑ ↓ Crucifix by Chvojnov.jpg zveřejnit zrušit ?

Crucifix by Chvojnov.jpg + přidat vymezení

▼ 0 referenci

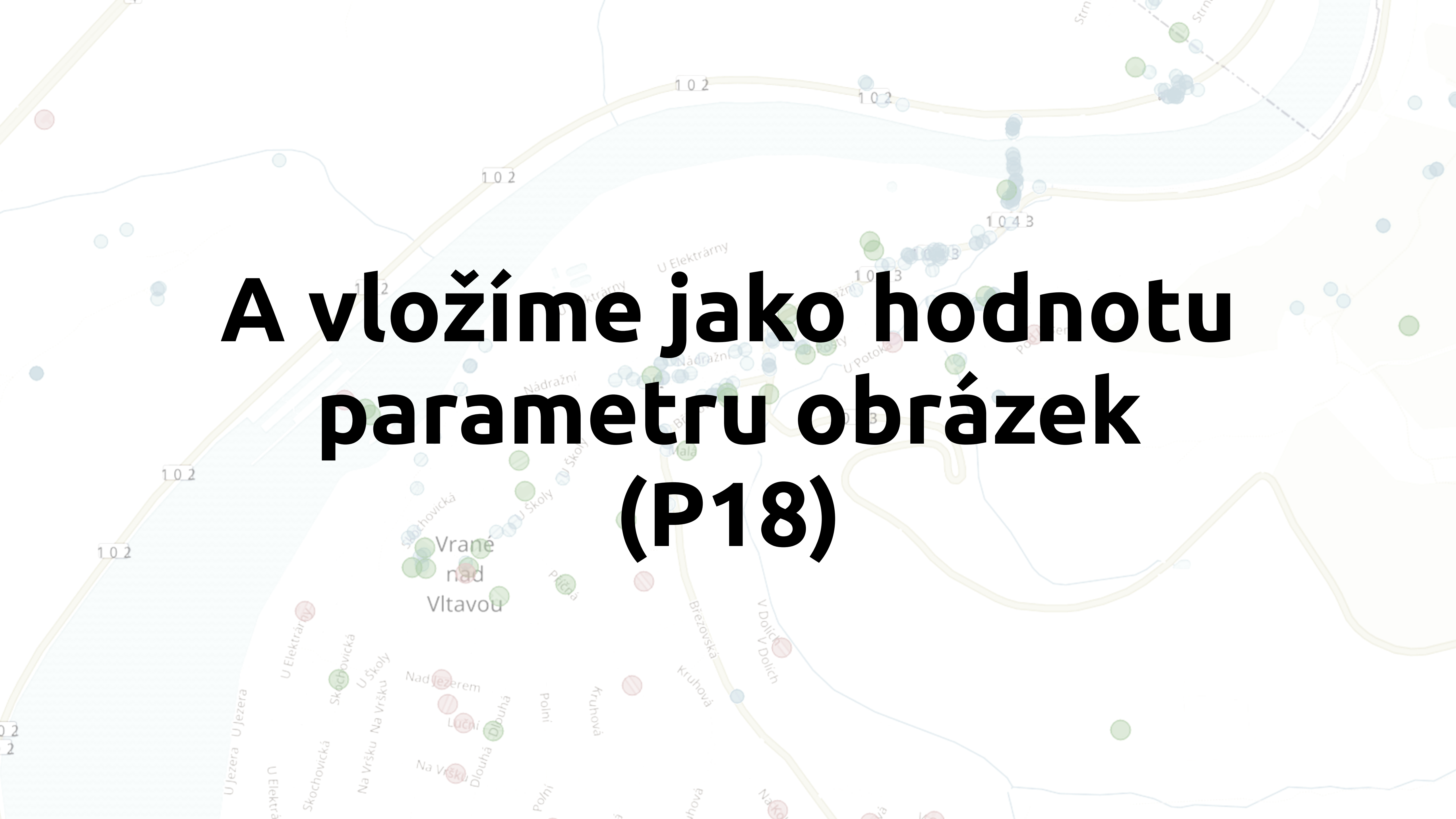
+ přidat referenci

+ přidat tvrzení

Identifikátory

identifikátor ↑ ↓ 18805 editovat

Jiné projekty (0 položek) editovat

A map of the Vrané nad Vltavou area in the Czech Republic, showing the Vltava river and surrounding roads. The map is overlaid with semi-transparent text. The text is in a large, bold, black font. The background map shows various locations like 'U Elektrárny', 'Nádražní', 'U Školy', 'V Dolích', and 'Kruhová'. There are also several colored circles (blue, green, red) scattered across the map, possibly representing data points or markers.

**A vložíme jako hodnotu
parametru obrázek
(P18)**

