

Historic, archived document

Do not assume content reflects current scientific knowledge, policies, or practices.

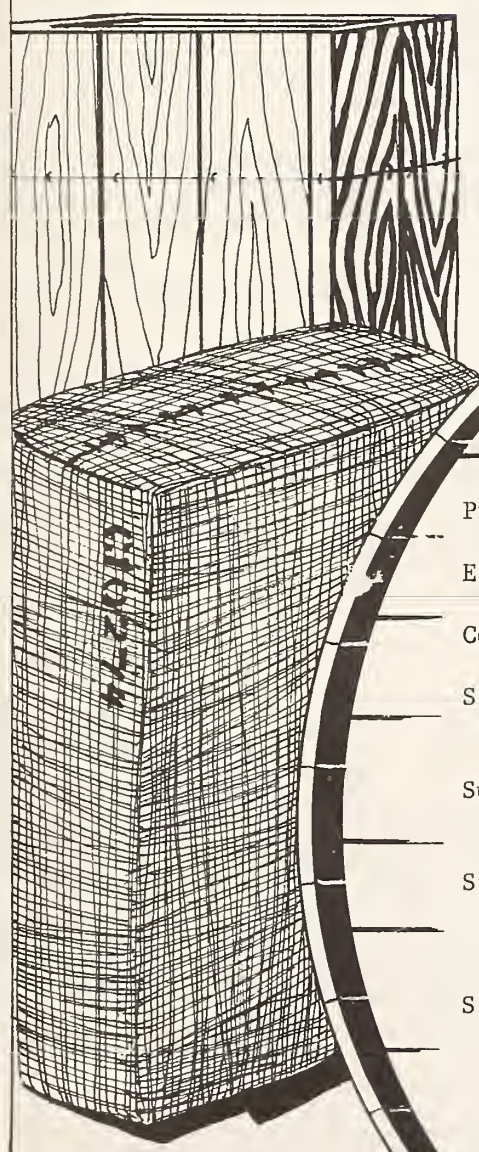
1.9
Ec 714

U.S. DEPARTMENT OF AGRICULTURE

SEP 17 1975

TOBACCO STOCKS

as of JULY 1, 1975



CONTENTS

Production and disappearance.	2
Estimated Utilization of Leaf Tobacco	3
Conversion Factors.	3
Stocks of leaf tobacco, by types converted to a FARM-SALES-WEIGHT equivalent.	4
Summary of tobacco leaf represented in inventories of tobacco sheet.	5
Stocks of leaf tobacco, by types, showing separately quantities owned by dealers and manufacturers	6
Stocks of leaf tobacco, summary by types.	7

(Covering Classes and Types)

CLASS 1, FLUE-CURED TYPES		CLASS 5, CIGAR-BINDER TYPES	
Type 11	Old and Middle Belt Flue-cured.	Type 51	Connecticut Broadleaf.
Type 12	Eastern North Carolina Flue-cured	Type 52	Connecticut Havana Seed.
Type 13	South Carolina Flue-cured.	Type 54	Southern Wisconsin.
Type 14	Georgia and Florida Flue-cured.	Type 55	Northern Wisconsin.
CLASS 1, FIRE-CURED TYPES		CLASS 6, CIGAR-WRAPPER	
Type 21	Virginia Fire-cured.	Type 61	Connecticut Shade.
Type 22	Tennessee-Kentucky Fire-cured, Eastern District.	Type 62	Georgia and Florida Shade.
Type 23	Kentucky-Tennessee Fire-cured, Western District.	MISCELLANEOUS TYPES OF DOMESTIC TOBACCO	
CLASS 3, AIR-CURED TYPES		Type 72	Louisiana Perique.
Light Air-cured (Class 3a)		Type 73	All domestic types of tobacco not otherwise classified.
Type 31	Burley.	FOREIGN TYPES	
Type 32	Southern Maryland.	Type 81	Cuba.
Dark Air-cured (Class 3b)		Type 82	Indonesia.
Type 35	One Sucker.	Type 83	Philippine Islands.
Type 36	Green River.	Type 84	Brazil.
Type 37	Virginia Sun-cured.	Type 85	Colombia.
CLASS 4, CIGAR-FILLER TYPES		Type 86	Dominican Republic.
Type 41	Pennsylvania Seedleaf.	Type 87	Paraguay.
Type 42-44	Ohio Filler.	Type 88	Mexico.
Type 46	Puerto Rican Sun-grown.	Type 89	Other foreign-grown cigar leaf.
		Type 91	Foreign-grown Oriental and Aromatic.
		Type 92	Foreign-grown Flue-cured.
		Type 93	Foreign-grown Burley.

Table 1. Production, stocks, supply, disappearance on a farm-sales-weight basis, and price of specified types, 1970-1975. 1/

FLUE-CURED, TYPES 11-14										
Marketing:	Carryover stocks (July 1) 2/				Pro-	Total	Disappearance			Average
year :	Manu-	Under	Other	Total	duction	Supply	Total	Export	Other	price
beginning:	facturers	Loan								to
July 1 :	Million	Million	Million	Million	Million	Million	Million	Million	Million	Growers
:	pounds	pounds	pounds	pounds	pounds	pounds	pounds	pounds	pounds	Cents
1970 :	1,013.8	744.9	213.7	1,972.4	1,178.1	3,150.5	1,174.1	534.0	640.1	72.0
1971 :	1,010.0	761.9	204.5	1,976.4	1,076.3	3,052.8	1,142.6	480.0	662.6	77.2
1972 :	1,086.6	617.8	205.8	1,910.2	1,022.1	2,932.3	1,183.0	518.8	664.2	85.3
1973 :	1,153.7	402.3	193.3	1,749.3	1,159.0	2,908.3	1,301.0	598.0	703.0	88.1
1974 :	1,154.2	276.7	176.4	1,607.3	1,245.3	2,852.6	1,200.6	548.3	652.3	105.1
1975 3/:	1,259.4	179.9	212.7	1,652.0						
CONNECTICUT SHADE, TYPE 61										
1970 :	11.5	--	0.7	12.2	9.3	21.5	7.6	0.9	6.7	400.0
1971 :	12.5	--	1.4	13.9	7.7	21.6	8.4	2.7	5.7	400.0
1972 :	11.4	--	1.8	13.2	5.1	18.2	7.5	2.8	4.7	485.0
1973 :	9.0	--	1.7	10.7	6.0	16.8	8.3	1.9	6.4	515.0
1974 :	6.9	--	1.6	8.5	7.8	17.6	8.1	3.9	4.2	600.0
1975 3/:	8.2	--	1.3	9.5						
GEORGIA AND FLORIDA SHADE, TYPE 62										
1970 :	7.5	--	1.7	9.2	5.6	14.8	6.7	0.9	5.8	270.0
1971 :	6.8	--	1.3	8.1	4.7	12.8	6.2	0.8	5.4	262.0
1972 :	5.7	--	0.9	6.7	4.6	11.3	4.3	0.5	3.9	280.0
1973 :	5.7	--	1.3	7.0	3.7	10.7	4.2	0.5	3.6	350.0
1974 :	5.1	--	1.4	6.5	3.2	9.7	3.5	0.5	3.0	380.0
1975 3/:	4.9	--	1.3	6.2						

1/ Annual disappearance for a type is calculated for the marketing year established for that type, the year beginning on the Quarterly reporting date on which stocks of the type are at their lowest point and before the new crop enters stocks.

2/ The carryover stocks have been tabulated separately according to broad groupings of ownership, namely manufacturers, under loan, and all other. "Other" reflects stocks reported by tobacco dealers and stocks held in the United States by representatives of foreign manufacturers. The quantities shown as owned by dealers may include some tobacco held by dealers which is earmarked for sale to domestic manufacturers or for export.

3/ Subject to revision.

Detail may not add to total because of rounding.

Table 2. Estimated leaf used per 1,000 cigarettes by domestic manufacturers, by types of tobacco, 1970-1975, July-June basis. (Farm-sales-weight)

Year beginning July	Domestic Types				Total Domestic	Imported	Total	Cigarettes per Pound of Leaf
	Flue-cured	Burley	Maryland					
	Pounds	Pounds	Pounds	Pounds	Pounds	Pounds	Number	
1970	1.02	.75	.05	1.82	.32	2.14	468	
1971	1.04	.77	.03	1.84	.36	2.20	454	
1972	1.01	.78	.02	1.81	.32	2.13	469	
1973	1.01	.73	.02	1.75	.36	2.11	473	
1974								
1975								
1976								

Estimates of AMS Tobacco Division.

Table 3. Factors for adjusting stocks reported by dealers and manufacturers to a farm-sales-weight equivalent, by types of tobacco.

AUCTION MARKET AREAS (Types 11-37) 1/							
Factors to multiply by to convert -							
	TYPE NUMBER	Stemmed stocks to -		Unstemmed stocks to -			
		Unstemmed Equivalent	Farm-sales-weight Equivalent	Farm-sales-weight Equivalent	From Packed Weight 1/		
Flue-cured	11-14	1.295	1.450		1.12		
Virginia Fire-cured	21	1.299	1.598		1.23		
Tennessee and Kentucky Fire-cured	22-23	1.324 2/	1.471		1.04		
Burley	31	1.345	1.510		1.12		
Southern Maryland	32	1.373	1.400		1.02		
One Sucker	35	1.413	1.554		1.10		
Green River	36	1.389	1.570		1.13		
Virginia Sun-Cured	37	1.326	1.538		1.16		
Miscellaneous Domestic	72-73	1.333	1.493		1.12		
DOMESTIC-GROWN CIGAR LEAF (Types 41-62)							
				Sweated Weight 3/	Marked Weight 3/	Farm-sales-weight 3/	Average for July 1, 1975 Report 3/
Pennsylvania Seedleaf	41	1.444	1.718	1.19	1.05	1.00	1.02
Ohio	42-44	1.454	1.730	1.19	1.05	1.00	1.10
Puerto Rican	46	1.314	1.551	1.18	1.16	1.00	1.16 P.R. 1.05 U.S.
Connecticut Broadleaf	51	1.375	1.622	1.18	1.04	1.00	1.06
Connecticut Havana Seed	52	1.386	1.635	1.18	1.04	1.00	1.16
Southern Wisconsin	54	1.383	1.687	1.22	1.06	1.00	1.02
Northern Wisconsin	55	1.404	1.713	1.22	1.06	1.00	1.04
Connecticut Shade	61	1.245	1.419	1.14	1.10	1.00	1.08
Georgia and Florida Shade	62	1.235	1.408	1.14	1.10	1.00	1.12
IMPORTED LEAF (Types 81-93)							
Cigar Leaf	81-89	1.400	1.624			1.16	
Foreign-grown Oriental and Aromatic	91	1.333	1.466			1.10	
Foreign-grown Flue-cured	92	1.295	1.450			1.12	
Foreign-grown Burley	93	1.345	1.506			1.12	

1/ Types 11-37 are reported on the basis of packed weight.

2/ Farm-sales-weight equivalent based on unstemmed sweated weight factor.

3/ The instructions for reporting unstemmed cigar-leaf of the domestic types require that dealers and manufacturers indicate the weight basis on which the tobacco is reported, namely, farm-sales-weight, marked weight, or sweated weight. The stocks are converted to the farm-sales-weight equivalent on the basis of average factors reflecting the percentage reported each quarter in each of these three categories.

Table 4. Stocks of leaf tobacco owned by dealers and manufacturers, by types, converted to a farm-sales-weight equivalent. July 1, 1975, compared with other quarters. 1/

	U.S. Type Number	July 1,			April 1, 1975	Jan. 1, 1975	Oct. 1, 1974
		1975	1974	1973			
		1,000 lb.	1,000 lb.	1,000 lb.	1,000 lb.	1,000 lb.	1,000 lb.
Flue-cured	11-14	1,651,965	1,607,284	1,749,294	1,932,464 *	2,216,690 *	2,155,835
Virginia fire-cured	21	8,852	8,442	8,659	9,705	7,998	7,101
Tennessee and Kentucky fire-cured. (Eastern District)	22	42,547	48,668	54,275	48,111	34,655	40,192
Kentucky and Tennessee (Western District)	23	5,384	6,693	10,735	6,477	4,064	4,907
Total fire-cured	21-23	56,783	63,803	73,669	64,293	46,717	52,200
Burley	31	1,223,632	1,216,535	1,384,250	1,373,888	1,314,301	1,070,665
Southern Maryland	32	67,284	67,918	59,613	45,387	51,703	61,711
Total light air-cured	31-32	1,290,916	1,284,453	1,443,863	1,419,275	1,366,00	1,132,376
One Sucker	35	22,377	27,845	30,657	24,346	21,352	23,117
Green River	36	15,357	15,369	17,763	16,327	13,533	13,772
Virginia sun-cured	37	2,464	3,177	3,472	2,672	3,086	2,974
Total dark air-cured	35-37	40,198	46,391	51,892	43,345	37,971	39,863
Pennsylvania seedleaf	41	54,569	49,214	57,946	57,420	41,047	47,513
Ohio Filler (Miami Valley)	42-44	6,683	6,849	7,614	7,542	5,044	5,854
Puerto Rican:							
In United States	46	2,390	2,841	3,338	2,389	2,312	3,557
In Puerto Rico	46	6,970	8,449	7,263	5,129	3,654	6,489
Total cigar filler	41-46	70,612	67,353	76,161	72,480	52,057	63,413
Connecticut Valley Broadleaf	51	5,155	5,132	5,404	4,942	4,625	4,877
Connecticut Valley Havana Seed	52	2,160	2,288	2,212	2,234	2,080	2,121
Southern Wisconsin	54	22,248	21,857	21,524	25,031	16,911	18,924
Northern Wisconsin	55	17,894	20,433	22,841	20,214	15,355	16,921
Total cigar binder	51-55	47,457	49,710	51,981	52,421	38,971	42,843
Connecticut shade	61	9,464	8,503	10,745	12,220	11,517	9,652
Georgia and Florida shade	62	6,172	6,534	6,982	7,121	7,275	6,621
Total cigar wrapper	61-62	15,636	15,037	17,727	19,341	18,792	16,273
Perique	72	561	601	691	484	711	523
Other miscellaneous domestic 2/	73	6,046	5,899	5,367	6,095	6,782	6,712
Total miscellaneous domestic	72-73	6,607	6,500	6,058	6,579	7,493	7,235
Cuba	81	126	172	298	125	145	173
Indonesia	82	10,910	10,644	9,045	10,712	10,896	9,352
Philippine Islands	83	39,738	40,896	31,101	38,688	37,702	40,959
Brazil	84	8,337	8,937	10,439	7,601	7,917	8,834
Columbia	85	12,538	9,746	13,195	10,685	11,487	13,756
Dominican Republic	86	24,009	21,987	18,656	24,501	19,194	19,826
Paraguay	87	10,824	8,326	6,717	10,816	10,909	8,072
Mexico	88	4,780	3,018	4,929	5,498	6,216	5,616
Other foreign-grown cigar leaf	89	22,948	20,393	19,777	20,566	20,160	19,547
Total imported leaf	81-89	134,210	124,119	114,157	129,192	124,626	126,135
Foreign-grown Oriental and Aromatic	91	414,769	383,435	388,385	411,995	377,088	350,304
Foreign-grown flue-cured	92	70,394	46,755	38,179	48,757	52,730	54,400
Foreign-grown burley	93	144,672	67,285	27,490	106,658	118,176	88,353
Total imported cigarette and smoking tobacco leaf	91-93	629,835	497,475	454,054	567,410	547,994	493,057
TOTAL ALL TYPES	11-93	3,944,219	3,762,125	4,038,856	4,306,800 *	4,457,315 *	4,129,230

1/ Totals include stocks of leaf tobacco sheet. See separate reporting in Table 5.

2/ Type 73 is defined as all domestic tobacco not otherwise classified.

* Revision.

Table 5. Summary of tobacco leaf represented in inventories of tobacco sheet, for cigar binder and wrapper, and for cigarettes (including smoking tobacco) separately.

		Cigar Binder and Wrapper					
		July 1,			April 1,	Jan. 1,	Oct. 1,
U.S. Type Number		1975	1974	1973	1975	1975	1974
		1,000 lb.	1,000 lb.	1,000 lb.	1,000 lb.	1,000 lb.	1,000 lb.
11-14	Stemmed	2	5	5	4	8	4
32	Stemmed	21	42	51	19	14	31
41	Unstemmed	228	341	693	235	329	217
	Stemmed	727	689	450	133	416	368
	Total	955	1,030	1,143	368	745	585
42-44	Stemmed	7	14	33	7	5	11
46	Unstemmed	0	6	0	0	0	0
	Stemmed	7	0	7	0	5	6
	Total	7	6	7	0	5	6
51	Unstemmed	66	12	85	23	75	53
	Stemmed	0	0	0	0	0	0
	Total	66	12	85	23	75	53
52	Unstemmed	74	0	41	0	45	51
	Stemmed	18	57	0	9	7	5
	Total	92	57	41	9	52	56
54	Stemmed	53	187	283	183	124	91
55	Unstemmed	1	4	2	2	4	2
	Stemmed	25	20	34	21	39	19
	Total	26	24	36	23	43	21
61	Unstemmed	6	2	19	7	4	1
	Stemmed	7	14	16	7	17	11
	Total	13	16	35	14	21	12
62	Stemmed	1	2	1	1	1	2
81-89	Unstemmed	76	9	9	80	63	5
	Stemmed	225	203	193	204	144	175
	Total	301	212	202	284	207	180
TOTAL	Unstemmed	451	374	849	347	520	329
	Stemmed	1,093	1,233	1,073	588	780	723
	Total	1,544	1,607	1,922	935	1,300	1,052

		Cigarettes (including smoking tobacco)					
11-14	Unstemmed	1,223	1,350	978	1,473	1,526	1,505
	Stemmed	10,453	10,340	10,900	12,261	11,438	10,649
	Total	11,676	11,690	11,878	13,734	12,964	12,254
31	Unstemmed	700	510	857	800	628	534
	Stemmed	5,206	5,624	5,904	7,225	6,230	5,610
	Total	5,906	6,134	6,761	8,025	6,858	6,144
32	Stemmed	280	130	113	118	370	356
41	Unstemmed	0	239	423	239	239	239
	Stemmed	0	28	79	28	28	28
	Total	0	267	502	267	267	267
61	Unstemmed	0	15	35	15	15	15
	Stemmed	0	18	16	18	18	18
	Total	0	33	51	33	33	33
91	Unstemmed	3,814	3,571	2,804	4,249	4,142	3,912
	Stemmed	740	1,162	1,360	1,421	988	1,098
	Total	4,554	4,733	4,164	5,670	5,130	5,010
92	Stemmed	0	0	0	0	0	0
Total	Unstemmed	5,737	5,685	5,097	6,776	6,550	6,205
	Stemmed	16,679	17,302	18,372	21,071	19,072	17,759
	Total	22,416	22,987	23,469	27,847	19,622	23,964

		GRAND TOTAL					
Total All Types	Unstemmed	6,188	6,059	5,946	7,123	7,070	6,534
	Stemmed	17,772	18,535	19,445	21,659	19,852	18,482
	Total	23,960	24,594	25,391	28,782	26,922	25,017

Table 6. Stocks of leaf tobacco, by types, showing separately quantities owned by dealers and manufacturers, July 1, 1975 compared with July 1, 1974. 1/ 2/

U.S. Type Number	Reported as owned by manufacturers 3/				Reported as owned by dealers (including loan stocks) 3/			
	July 1, 1975			July 1, 1974	July 1, 1975			July 1, 1974
	Unstemmed	Stemmed	Total		Unstemmed	Stemmed	Total	
	1,000 lb.	1,000 lb.	1,000 lb.	1,000 lb.	1,000 lb.	1,000 lb.	1,000 lb.	1,000 lb.
11-14	27,947	846,970	874,917	801,543	83,116	206,530	289,646	342,754
21	3,785	35	3,820	3,606	3,290	58	3,348	3,223
22	29,097	182	29,279	32,950	11,398	111	11,509	13,739
23	2,770	19	2,789	4,002	2,380	0	2,380	2,411
21-23	35,652	236	35,888	40,558	17,068	169	17,237	19,373
31	28,445	722,876	751,321	688,468	50,026	29,273	79,299	158,230
32	15,333	21,607	37,052	33,488	5,796	11,059	16,855	20,671
31-32	43,778	744,483	788,261	721,956	55,822	40,332	96,154	178,901
35	10,156	5,637	15,793	17,482	2,164	42	2,206	5,117
36	9,943	1,592	11,535	9,379	1,077	259	1,336	3,461
37	876	942	1,818	2,386	0	0	0	1
35-37	20,975	8,171	29,146	29,247	3,241	301	3,542	8,579
41	22,639	12,038	34,677	29,559	7,643	1,746	9,389	10,482
42-44	5,221	121	5,342	5,448	550	73	623	625
46 4/	703	1,530	2,233	2,420	5,626	163	5,789	7,300
41-46	28,563	13,689	42,252	37,427	13,819	1,982	15,801	18,407
51	1,880	192	2,072	1,613	2,378	204	2,582	2,815
52	749	54	803	841	1,037	0	1,037	1,086
54	17,126	2,543	19,669	18,260	374	65	439	1,607
55	8,851	4,616	13,467	15,829	552	121	673	1,256
51-55	28,606	7,405	36,011	36,543	4,341	390	4,731	6,764
61	5,817	1,380	7,197	6,092	1,132	0	1,132	1,452
62	4,125	192	4,317	4,508	307	666	973	1,108
61-62	9,942	1,572	11,514	10,600	1,439	666	2,105	2,560
72	0	281	281	283	0	95	95	121
73 5/	7	4,043	4,050	3,906	0	1	1	46
72-73	7	4,324	4,331	4,189	0	96	96	167
81	1	16	17	31	0	61	61	79
82	2,912	1,839	4,751	4,318	3,709	150	3,859	4,034
83	6,983	6,066	13,049	11,569	4,788	9,995	14,783	16,424
84	3,006	1,555	4,561	3,919	1,832	123	1,955	3,146
85	2,857	5,041	7,898	5,537	666	164	830	1,363
86	11,126	5,373	16,499	14,273	1,451	427	1,878	2,803
87	4,358	2,412	6,770	4,525	1,532	46	1,578	2,336
88	1,380	1,762	3,142	1,979	262	8	270	318
89	5,039	4,544	9,583	7,826	7,448	668	8,116	8,375
81-89	37,662	28,608	66,270	53,977	21,688	11,642	33,330	38,878
91	373,983	1,849	375,832	347,568	607	6	613	334
92	2,927	26,126	29,053	21,219	11,888	10,978	22,866	14,418
93	2,884	78,718	81,602	38,910	7,924	9,308	17,232	7,372
91-93	379,794	106,693	486,487	407,697	20,419	20,292	40,711	22,123
11-93	612,926	1,762,151	2,375,077	2,143,737	220,953	282,400	503,353	638,506

1/ Total includes stocks of leaf reported in tobacco sheet. See separate reportings in Table 5.

2/ These statistics represent the quantity of leaf tobacco owned by dealers and manufacturers and others subject to the provisions of PL 661 enacted January 14, 1929 and the amendments thereto.

3/ The quantities shown as owned by manufacturers represent domestic manufacturers only. All Government loan stocks are dealers' holdings.

4/ Includes stocks on the island of Puerto Rico.

5/ For explanation of stocks included in this classification, see footnote 2 on Page 4.

Table 7. Stocks of leaf tobacco owned by dealers and manufacturers, summary by types July 1, 1975, compared with other quarters. 1/ 2/

TYPE NAME	U.S. Type Number	July 1, 1975 3/			July 1, 1974	April 1, 1975	Jan. 1, 1975
		Unstemmed	Stemmed	Total			
		1,000 lb.	1,000 lb.	1,000 lb.	1,000 lb.	1,000 lb.	1,000 lb.
Flue-cured	11-14	111,063	1,053,500	1,164,563	1,144,297	1,366,515	1,572,606 *
Virginia fire-cured	21	7,075	93	7,168	6,829	7,862	6,432
Tennessee and Kentucky fire-cured (Eastern District)	22	40,495	293	40,788	46,689	46,132	33,238
Kentucky and Tennessee fire-cured (Western District)	23	5,150	19	5,169	6,413	6,220	3,895
Total fire-cured	21-23	52,720	405	53,125	59,931	60,214	43,565
Burley	31	78,471	752,149	830,620	846,698	941,260	925,736
Southern Maryland	32	21,129	32,666	53,795	54,159	33,876	38,515
Total light air-cured	31-32	99,600	784,815	884,415	900,857	975,136	964,251
One Sucker	35	12,320	5,679	17,999	22,599	19,549	17,268
Green River	36	11,020	1,851	12,871	12,840	13,729	11,354
Virginia sun-cured	37	876	942	1,818	2,387	1,964	2,319
Total dark air-cured	35-37	24,216	8,472	32,688	37,826	35,242	30,941
Pennsylvania Seedleaf	41	30,282	13,784	44,066	40,041	47,000	32,938
Ohio Filler (Miami Valley)	42-44	5,771	194	5,965	6,073	7,012	4,442
Puerto Rico:							
In United States	46	814	932	1,746	2,095	1,747	1,741
In Puerto Rico	46	5,515	761	6,276	7,625	4,219	2,903
Total cigar filler	41-46	42,382	15,671	58,053	55,834	59,978	42,024
Connecticut Valley Broadleaf	51	4,258	396	4,654	4,428	4,374	4,023
Connecticut Valley Havana Seed	52	1,786	54	1,840	1,927	1,921	1,801
Southern Wisconsin	54	17,500	2,608	20,108	19,867	22,736	15,162
Northern Wisconsin	55	9,403	4,737	14,140	17,085	16,272	12,721
Total cigar binder	51-55	32,947	7,995	40,742	43,307	45,303	33,707
Connecticut shade	61	6,949	1,380	8,329	7,544	10,825	10,395
Georgia and Florida shade	62	4,432	858	5,290	5,616	6,180	6,399
Total cigar wrapper	61-62	11,381	2,238	13,619	13,160	17,005	16,794
Perique	72	0	376	376	404	324	493
Other miscellaneous domestic	73 4/	7	4,044	4,051	3,952	4,084	4,545
Total miscellaneous domestic	72-73	7	4,420	4,427	4,356	4,408	5,038
Cuba	81	1	77	78	110	78	89
Indonesia	82	6,621	1,989	8,610	8,352	8,399	8,619
Philippine Islands	83	11,771	16,061	27,832	27,993	27,086	26,785
Brazil	84	4,838	1,678	6,516	7,065	5,887	6,169
Colombia	85	3,523	5,205	8,728	6,900	7,253	8,198
Dominican Republic	86	12,577	5,800	18,377	17,076	19,091	14,803
Paraguay	87	5,890	2,458	8,348	6,861	8,149	8,086
Mexico	88	1,642	1,770	3,412	2,297	3,962	4,559
Other foreign-grown cigar leaf	89	12,487	5,212	17,699	16,201	15,684	15,401
Total imported leaf	81-89	59,350	40,250	99,600	92,855	95,589	92,709
Foreign-grown Oriental and Aromatic	91	374,590	1,855	376,445	347,902	373,746	342,187
Foreign-grown flue-cured	92	14,815	37,104	51,919	35,636	35,890	39,760
Foreign-grown burley	93	10,808	88,026	98,834	46,282	73,219	81,248
Total imported cigarette and smoking tobacco leaf	91-93	400,213	126,985	527,198	429,820	482,855	463,195
TOTAL ALL TYPES	11-93	833,879	2,044,551	2,878,430	2,782,243	3,142,245	3,264,830 *

1/ Totals include stocks of leaf reported in tobacco sheet. See reporting in Table 5.

2/ These statistics represent the quantity of leaf tobacco owned by dealers and manufacturers and others subject to the provisions of PL 661, enacted January 14, 1929 and the amendments thereto.

3/ Subject to revision.

4/ For explanation of stocks included in this classification see footnote 2 on Page 4.

* Revision

UNITED STATES DEPARTMENT OF AGRICULTURE
WASHINGTON, D. C. 20250

POSTAGE AND FEES PAID
U.S. DEPARTMENT OF
AGRICULTURE
AGR-101



OFFICIAL BUSINESS

PENALTY FOR PRIVATE USE, \$300

NOTICE

If you no longer need this
publication, check here
return this sheet, and your name will
be dropped from the mailing list.

If your address should be changed,
write the new address on this sheet
and return the whole sheet to:

Tobacco Division, Stocks Report
Agricultural Marketing Service
U. S. Department of Agriculture
Washington, D. C. 20250

Tobacco Inspection Services are available to all
residents of the United States regardless of race,
creed, or national origin. Violations should be
reported to the Secretary of Agriculture, Washington,
D. C. 20250

