

F

54

V44



144

VERMONT SUMMER RESORTS



J.C.

VERMONT

Designed by the Creator for the
Playground of the Continent

To him who in the love of Nature holds
Communion with her visible forms she speaks
A various language . . .



Issued from the BUREAU OF PUBLICITY of the
Department of State

Secretary of State
Publicity Bureau

152
147

CAPITAL CITY PRESS
MONTPELIER VT

v. 1 2 & 3 11
22 10 14 18 20 26 28

172

Foreword

To you who feel, with the coming of warm June days, a recurrence of primitive longing to recline on the green bosom of Earth, shaded and sheltered by rustling, leafy boughs, soothed by the murmur of soft breezes and lulled by the rippling tinkle of silver streams this

Hand Book of Vermont

is presented, to suggest how the Green Mountain State may meet your desires, in the hope that you may essay a visit, expand with the strength of the breezes that blow from the hills, repose in the quiet of the valleys and rejuvenate in the peace that abides in the shadow of the mountains.

The Playground of the Continent.

WHEN the moisture laden winds with healing in their wings, sweeping inland from their wide surge over the North Atlantic, encounter their first obstacle, the mountain range that divides Vermont, they distill to earth a portion of their aqueous burden, and this stimulates and sustains the verdure of the hills which from their first discovery have given Vermont its name, the Green Mountain State, Verd Mont.

Few sections of the country are so well watered as Vermont. Lying between Lake Champlain and the Connecticut River, it is traversed by hundreds of streams, large and small, and dotted with innumerable lakes and ponds. Yet its altitude is such, its drainage to the valleys so perfect, that the air is dry rather than surcharged with moisture. Altitude, atmosphere, climatic conditions, the absence of congested centers of population, combine to make Vermont one of the most healthful sections of the country. No portion of the United States of equal area has so few cases of tuberculosis as Grand Isle county, that island section of Lake Champlain, swept by the mild breezes that continually blow across the lake. The early history of Montpelier, the capital, shows an average death rate, including accidents and infant mortality, of one in four hundred per year.

Vermont puts forth no claim as a universal sanitarium, but it is so elevated, watered and aerated that its healthful conditions must command attention.

Most visitors who have written anything about the State have used such adulatory terms as to make what they have written seem like exaggeration. From Henry Ward Beecher to Ambassador James Bryce superlatives have been squandered in efforts to depict the natural beauties of the State, and Vermonters, believing that they live in the finest country on earth, have accepted and echoed such statements.

A simple description of the natural beauties of the State is sufficient introduction, but only an actual visit can afford a thorough appreciation of them.

The great diversity of physical features, the combination of mountain, valley, forest, lake and stream, the close juxtaposition of varied attractions, the continually changing character of the scenery, opportunities for all the

amusements a sojourn in the country can be expected to furnish, make Vermont attractive and stir visitors to sound her praises.

Tradition, history and romance encircle this first of the states to be added to the original thirteen, and about no section do they cluster more closely than Lake Champlain. Discovered by the great French explorer, missionary and warrior, it has been the scene of many historic incidents.

Rock Dunder, where Indians of the Iroquois federation used to meet in council; Isle La Motte where the shrine of St. Anne was established; Four Brothers island where the sea gulls from New York harbor build their nests and rear their young; Valcour bay, where the first American fleet, commanded by Benedict Arnold, met the British; Valcour Island, where the first Socialist colony in the country was established; the site of Fort Cassin at the mouth of Otter Creek; the ruins of Fort Ticonderoga on the New York side; the Sand Bar bridge; the railway that makes its way north by spanning the intervals between the islands; the great Back Bay with its enticing opportunities for anglers; and the soft and pleasing scenery about Grand Isle combine to make up the attractions about the lake.

Broad bosomed Champlain, beautiful, charming, interesting, has rivals for favor. Willoughby lake, shaded by rugged mountains and reminding one of the famed lochs of Scotland; Caspian lake with its summer colony; Bomo-seen, a place of resort from early times; Memphremagog stretching far into Canada in the northeastern corner, all are charming and interesting. Scattered over all portions of the State are other smaller lakes that add to the beauty of the scenery and the enjoyment of visitors. In the little town of Woodbury are thirty ponds ranging from three to three hundred acres in area. All these are fed by springs. No stream flows into the town, but the volume of water produced by these ponds is so great that a considerable water power is developed on the streams that flow from them.

Such spring-fed ponds are frequent and the abundance of springs provides a pure and plentiful supply of water. Several cities and villages draw their public supplies from a system of springs and there is hardly a farm house that has not running water supplied from a spring a few rods away, on some elevation where it is secure from contamination.

Close to the tops of the highest mountains gush forth waters of coldness and purity, grateful to the traveler and relieving him of the burden of carrying some of the supplies usually necessary on a mountain trip. Near the top of Mount Mansfield is a spring whose waters, on analysis, prove to be almost a pure naturally distilled water.

Medicinal springs are also numerous in many parts of the State and afford a cure for many diseases. Analysis shows some of them to closely resemble some of the famous German spas, while others differ little from such English

springs as those at Harrowgate or the Ballcastle and Castlemain springs in Ireland. From some of these springs Epsom salts were made in the early days, but the manufacture was abandoned because of the small profit to be derived. In one town are half a dozen springs, of different medicinal qualities, lying in a semicircle only a few rods across. Some of these springs were much visited by Southerners before the Civil War but since that time no effort has been made to establish a health resort at any of them.

No mountain peaks rear their heads in rugged, barren grandeur as in the Rockies or in such imposing loftiness as the Presidential range, but all about are graceful, green clad elevations, accessible without the aid of a cog wheel railway, from which may be seen a wonderful panoramic combination of wilderness and civilization.

Mansfield, the highest peak, 4369 feet above the sea, has a well equipped hotel at the summit and is easily climbed by carriage or on foot. Looking west the eye roams over an expanse of forest, over a broad and fertile valley divided by the sinuous Winooski, on to Burlington and its green slopes, to Lake Champlain dotted with many islands, and further in the blue distance the Adirondacks range before the vision.

Travelers have said that the view from the summit of Mansfield presents a more varied and attractive combination of scenery than they have discovered in this country or abroad. So, too, they have said that sunset on Lake Champlain, viewed from Battery Park in Burlington, surpasses anything in Switzerland.

Development of the outdoor spirit among Americans in recent years is bringing a better appreciation of the natural beauties of our own country.

Mansfield is reached by a regular stage line in summer. Camel's Hump (Le Lion Couchant), a near neighbor and but little lower, must be climbed on foot, but an easy trail leads to the summit. No hotel has been erected there, but a club of public spirited gentlemen maintains a shelter on the summit, with a caretaker in charge, where the visitor may buy his meals or have the use of culinary utensils to provide his own.

Ascutney overlooks the Connecticut valley, affording a wonderful view to the north and far into Massachusetts to the south. Directly across the river is the famous Cornish, N. H., summer colony of artists and writers. The old trail to the summit has been kept open by an association of enthusiasts, and a stone house has been erected, the use of which is free to all visitors, the only obligation being that they will provide as much wood and kindling as they use and will leave the house and its furnishings in proper condition. There is no lock on the door and no injury has ever been perpetrated by visitors.

Killington and Pico in the west, Jay Peak in the north, Wantastiquet and Equinox in the south, and half a hundred others of varying elevations, all

have their charms and points of interest, varying the appearance of the landscape and furnishing extensive views for those who care to climb to their summits.

The Green Mountain Club, organized last year by some prominent people in the State, plans to make the various peaks more accessible and to furnish shelter and accommodations such as visitors may require. It proposes to cut a trail along the summits of the Green Mountain range which traverses the State from north to south.

The State is entering on a policy of forest reserves which is being aided by private individuals, and some of these are on the mountain summits, set aside under conditions that will keep them forever free from the devastation of the lumberman's axe.

The Hon. Joseph Battell of Middlebury, the largest individual land owner in the State, has given to the public the summit of Mount Ellen in Lincoln and several hundred acres at the top of Camel's Hump, while the Hon. M. J. Hapgood has made a similar gift of lands on Mount Bromley in Peru. These lands will be in charge of the State forester and this insures that so much at least of the mountains of Vermont will be kept green.

A limestone formation runs through a large part of the State and water percolating under ground has formed many caverns of varying sizes. None of them equals Luray or the Mammoth cave and few have been thoroughly explored. Ethan Allen's cave by the side of Lake Dunmore, on the side of Mount Moosealamoo is of greatest historic interest. In the northeastern section, in Clarendon, Plymouth, Danby and other towns, are large caverns with chambers of varying sizes, stalactites hanging from the roof and stalagmites rising to meet them, while in one is the expected underground stream with the conventional eyeless fish. Some of these caverns were partly explored early in the last century, but the result of the exploration has been generally forgotten and in many cases the openings are now concealed by a growth of bushes, so that they remain today a *terra incognita*, awaiting the visits of the curious and venturesome.

There are other natural curiosities, such as the frozen well in Brandon, producing ice the year around, balanced rocks of several tons weight in several places, a natural stone bridge across the Winooski and the Lamoille, the gorge at Middlesex through which were drained the waters of a glacial lake, and the gorge at Winooski, where some of the rocks exposed are said by geologists to be the oldest rocks on earth's surface, older than those of the Laurentian hills; and prominent traces of Indian occupancy in the paintings on the rocks at Bellows Falls, the rude sculptures at Brattleboro and the mounds in the Ox-Bow at Newbury.

Champlain and the larger lakes afford ample opportunities for boating and there are yacht clubs at Burlington and Newport with large membership and commodious club houses, supporting a considerable fleet, while motor boats ply the ponds and streams in all sections.

Damming the Connecticut near Brattleboro has created a lake twenty miles long, extending up the stream almost to Bellows Falls. Already a good sized fleet of various kinds of craft has been created and a flourishing boat club established.

Abundant opportunities for pleasant and exciting canoe trips may be found and about the lakes are frequent sandy beaches where bathing may be enjoyed.

At all the important resorts golf links have been laid out and some of the best links in the country may be found in Vermont. Several of the leading hotels employ golf instructors during the summer and the grounds of private clubs are freely opened to summer guests.

The fishing season for trout opens in the streams on April 15 and in the ponds on May 1. The bass season opens June 15, affording the fish time to finish their duties on the spawning beds and seek their summer feeding grounds.

Vermont ponds and streams are natural trout water and some of the stories told of the catching of fish by early settlers are almost unbelievable. As in other States various causes have operated to deplete the supply of fish to some extent, but a plentiful restocking is gradually going on, so that there is probably as good fishing to be found in Vermont today as in any other State, though the man who knows will not expect to find this in public waters close by the larger villages.

The United States government maintains two trout hatcheries in the State, each of which produces several million fry, and the State also has a hatchery and in addition to its product purchases every year a large number of fry for stocking public waters.

Brook trout are caught almost everywhere, in some streams apparently too small to afford them room to turn around, and intelligent and effective efforts are being made to keep up the supply. With the cutting off of the forests the water of many streams has become too warm to afford a proper abode for this prince of fishes, and there the gorgeous hued rainbow and the gamy steelhead from the west have been introduced. The German brown trout, much resembling the original speckled trout, has also been planted in some waters with good results. Land locked salmon, the ouananiche of Canadian waters, has been placed in Caspian lake and some large specimens have been taken there. Hundreds of thousands of fry and fingerlings are placed in public waters every year and many more in private preserves. This, with an efficient warden service, under the expert supervision of Mr. John W. Titcomb,

for several years connected with the national bureau of fisheries, is resulting in a gradual restoration of good fishing. This is also promoted by the natural purity of the waters and their general freedom from contamination by the refuse from manufacturing establishments that pollutes the waters of many states and makes it impossible for game fish to live in them.

No effort has been made to propagate the black bass artificially, as all fish culturists have found it very difficult, but some of the smaller ponds, where large trout with cannibalistic tendencies were eating up the smaller ones, have been stocked with this hardy fish and they have thrived remarkably well. For many years Dog pond in Woodbury held the record for the largest small mouth black bass caught in the country and the record may be good today.

Probably no eastern water affords better bass fishing than the Great Back Bay of Lake Champlain. It is an ideal breeding and feeding ground and for years seining has been prohibited in the lake, so the bass, sturdy fish and well able to care for themselves, maintain their numbers and promise a continuance of sport for many years to come.

Arrangements are being made for the artificial propagation of sturgeon, of which there are now a considerable number in Lake Champlain. These fish, weighing sometimes 100 pounds or more, are not easily taken with ordinary tackle and can hardly be classed as game fish. Much so-called Russian caviare is made from American sturgeon roe.

The United States government maintains at Swanton a hatchery for wall-eyed pike, or pike perch, and the fry of these is distributed by the million in public waters not inhabited by trout. They reach a weight of several pounds in a few years, and while not accounted a game fish are always welcome on the table.

Campers and tourists seeking an addition to their menu will find in all parts of the State an abundance of yellow perch, always easily caught and one of the most toothsome of fresh water fishes when properly dressed. Perch weighing a pound and a half are frequently taken in the larger lakes, but elsewhere they run little above half to three quarters of a pound.

The forests furnish a variety of sport for the hunter. Deer are taken by the hundred every season. Having been protected for twenty years they have become comparatively tame, and every year are seen in the streets of villages and cities. Some are shot every year^s within the city limits of Montpelier, the capital.

Hunting of moose and caribou is prohibited. There is a herd of moose in Essex county steadily growing in size. As the moose is a migratory animal the hunting of it will probably be permitted in a few years. Only occasionally have any caribou been seen in the State for years.

Gray squirrels are numerous in years when nuts are plenty and hares and rabbits afford good sport.

Partridge and woodcock are as plentiful as can be expected in a thickly settled country. Wild duck and geese are taken in large numbers during the season of flight and snipe and plover are plentiful. English pheasants and capercailzie, which have been placed in some coverts, are protected until 1913 when they are expected to furnish good shooting.

The necessity for going over or around so many hills has given Vermont a large highway mileage in proportion to its area. Maintenance imposes a heavy burden on the small towns, where in some cases road mileage is out of all proportion to area or population, and some of the highways there are not kept up as they should be. The State, by extending financial aid and increasing the authority of its highway commissioner, is gradually taking over more of the burden of maintenance. Already the main highways are in excellent condition, and the Munsey automobile tourists last year declared that the roads of Vermont were as good as those of any states through which they passed. More than a million dollars will be spent on the highways of the State this year. This fund is distributed by the State highway commissioner and county supervisors in accordance with improved modern methods. These and other officials work so far as possible with automobilists and officials of the automobile club, and without burdening the State with debt the highways are being placed in excellent condition. Macadam is used in places where traffic is heavy enough to require it, and in the country districts a high quality of gravel road is constructed. Many of the cities use some tar compound to surface their roads and keep down the dust, while treatment with crude oil has been very effective on dirt roads.

Automobilists receive reciprocal courtesies and privileges, they find here good roads, hotels equal to any in the country in quality if not in size that make their interests a special care, and State officials who have no disposition to impose upon them any restrictions beyond those of the statute, which automobilists admit are reasonable and satisfactory. The Munsey automobile tourists passed through the State last year and were greatly pleased with the treatment they received, and the Glidden Reciprocity tourists will travel almost the entire length of the State this season.

To the tourist, whether by automobile, on foot, by carriage or train, to the camper, the fisherman or the hunter, the mountain climber, the scientist, the seeker for natural curiosities, the artist and the photographer Vermont offers wondrous scenery, clear air, pure water, healthful conditions, a delightfully equable climate, good roads, and opportunities for varied amusements.

At Brattleboro, Bellows Falls, White River Junction, Woodstock, Montpelier, Waterbury, Burlington, Swanton, St. Albans, Rutland, Lake Bomoseen,

Manchester, Bennington and other places are large and commodious hotels making special provision for summer guests. Smaller and less pretentious resorts are scattered about the State, there are numerous camps along the lake shores, which may be leased for the season or for a few weeks, and boarding houses that furnish ideal summer accommodations, while many private houses are opened for a few visitors.

First class train accommodations enable one to reach all the more important points in Vermont with ease and comfort, while branch lines and a dozen or more lines of electric road make a large part of the State readily accessible. The Boston and Maine railroad follows the course of the Connecticut river on the eastern side, with a branch division reaching across the State; the Central Vermont traverses the central portion and the New England States Limited over its line is one of the finest trains running out of Boston. The Rutland road connects with Boston trains at Bellows Falls and with the Delaware and Hudson and New York Central at Rutland, running south to Bennington and through Massachusetts and north through the islands of Lake Champlain to Montreal. These three great systems with their branch lines, and the other roads that enter the State for a few miles at points not otherwise covered make all the more desirable resorts of Vermont easy of access.

Fully detailed information as to the best trains and most convenient means of reaching any desired point will be furnished to any one who will address,

GUY W. BAILEY,
Secretary of State,
Essex Junction, Vt.

Publicity Department.

Intending visitors who desire copies of the automobile laws or the fish and game laws, may secure them by applying to the address given above, in person or by letter or telephone.

It is the purpose of this bureau to furnish all the information it can to those who desire it and all inquiries will be answered as fully as its information and resources will permit.

The myriad attractions, the countless spots of scenic beauty and natural grandeur and historic interest scattered through 246 towns cannot be even briefly mentioned in such a publication as this, but short reference to the various counties will afford something of desirable information and a suggestion where more may be obtained.

Addison County.

Extending fifty miles or so along the shore of Lake Champlain, traversed by Otter Creek, the largest stream in the State, Addison county contains Vergennes, the oldest and for a long time the only city in the State, a charming old-fashioned town. The falls of the Otter is one of the finest water views of the State.

At Vergennes is the State agricultural school, at Middlebury the college of that name, founded at the beginning of the last century and one of the early co-educational institutions of learning. Ferrisburgh was the home of Rowland Robinson, author of the famous "Uncle 'Lisha'" stories and the old farm house was one of the stations of the underground railroad by means of which escaping negro slaves were aided to reach Canada. At Weybridge is the government farm for breeding Morgan horses, a type that originated in Vermont and is specially desirable for road work and cavalry purposes. Chimney Point on the lake shore is a point of historic interest and Crown Point and the ruins of Fort Ticonderoga on the New York shore draw many visitors every season. Lake Dunmore, well-known to all readers of Thompson's Green Mountain Boys, is a beautiful expanse of water where lake trout of large size abound. On its shore is a modern, well conducted hotel with numerous cottages and smaller places of resort.

Bennington County.

Whether the battle of Bennington, one of the most important engagements of the revolutionary period, was fought on Vermont or New York soil is still a matter of dispute among historians. Vermonters are so well assured of the correctness of their claim that they have erected at Bennington a monument in commemoration of the battle, a magnificent granite shaft. If future investigation and new evidence shall establish the claim of New York to have been the scene of that fight, it cannot rob Vermont of the pride it has in the achievement of her sons who participated in the battle.

At Peru is the only remaining toll road in the State, and the famous hotel with a fireplace on the veranda.

Manchester with its broad and shaded streets, nestling under the shadow of Equinox Mountain, has been a well known summer resort for years and has produced a whole family of prominent hotel men. The Battenkill river is one of the best fishing grounds in the east and there is at Manchester a manufacturer of some of the finest fishing rods and flies produced in the country.

Bennington is the home of Gen. J. G. McCullough, former governor of the State, one of the romantic figures in the early days of California, and among its summer visitors is Robert Lincoln.

Well wooded, with many mountains and streams and numerous hotels and other places of entertainment, easy of access from the large cities, Bennington county's small towns and big villages, demand favorable consideration.

Caledonia County.

This section derives its name from the fact that the larger early settlements were made by Scotchmen. It borders for several miles on the Connecticut River and there is soon to be constructed at the Fifteen Mile Falls a water power that will produce 50,000 or more of horse power. The company that controls it will expend about \$8,000,000 on the work. This will create an artificial lake covering hundreds of acres.

St. Johnsbury, the largest town, contains the great Fairbanks scale works whose products go all over the world, the Athenaeum in which is a great painting of the grand canon, the Fairbanks museum filled with valuable curiosities from all parts of the world and many historic relics.

Speedwell Farms at Lyndonville is the home of Theodore N. Vail, president of the American Bell Telephone Company and the Western Union Telegraph Company. He has established there an industrial and agricultural school that is crowded to its full capacity.

Danville, once the seat of the State government, is a delightful old town, while Hardwick, which is developing as a granite manufacturing center, is a modern and hustling community.

Through a portion of this county runs the old Hazen road, built in 1779 as a military route by General Hazen and now used as a State highway.

The town of Wheelock is owned by Dartmouth college, the land having been granted for educational purposes, in 1785, and was named for the Rev. John Wheelock who was at that time president of the college.

One of the government's trout hatcheries is located at St. Johnsbury.

Chittenden County.

Fort Ethan Allen, a United States military post for cavalry, is one of the most frequently visited points in this section. The name of Allen is closely connected with the county for that family of early Vermont patriots owned large tracts about the lake and it was through the influence of Ira Allen and his gifts of land that the State University was located at Burlington. Situated on an eminence above the city, it is one of the most attractive places for an educational institution in the entire east and the summer school of languages, science and music is always well attended.

Burlington, the largest city of the State, is "beautiful for situation," bordering on the shore of the picturesque lake, close by that natural wonder, the Winooski Gorge, where the rocks rise a hundred feet above the narrow river; close by Mallets Bay, a picturesque spot where a boys' summer school is located, where there is excellent fishing and splendid facilities for bathing; a New England village in the soft greenness of its shaded streets; a modern city in the variety and extent of its commerce and manufactures; through its railroad and steamboat connections affording opportunities for reaching with ease any portion of the State and containing within its own borders many bits of beauty.

Two rivers run through the county, the Winooski and the Lamoille, affording good fishing along their course and at their mouths. On the Lamoille at Milton the International Paper Company has a large mill.

Lake Iroquois in Hinesburgh is a charming and popular resort.

At Shelburne is the splendid country estate of Dr. W. Seward Webb of New York, and many handsome and substantial residences are scattered through the valleys.

The section is largely composed of fertile valleys watered by many streams, and from the higher portions wondrous views are had of the great lake and the mountains away to the eastward.

It is a fertile farming country, and the most valuable apple orchard in New England is in the town of Charlotte.

Its wonderful views of mountain, lake and stream, of smoothly cultivated land and the wildness of nature, the ease with which noted points may be reached, the opportunities for fishing in the streams and for yachting, bathing and fishing in the lake make this one of the favored portions of Vermont.

Essex County.

Situated in the northeast corner, the scene of great lumbering operations, many of its towns untraversed by a railroad, this county contains more of real wilderness than any other. Its eastern limit is bounded by the upper reaches of the Connecticut River, and down that stream the great lumber companies send every year millions of feet of lumber taken from its extensive forests.

Three considerable rivers and numerous small streams flow through the county. Valuable mineral springs are found in the town of Brunswick.

The lakes and streams abound with fish and the woods with deer, so that this is perhaps the most attractive section of the State for the sportsman. The only known herd of moose in Vermont lives in Essex county.

Island Pond, the principal village, is a division headquarters of the Grand Trunk railway and has developed some manufacturing industries aside from lumbering, which is the main business of the people.

Franklin County.

Advantages of natural location, business enterprise and industrial activity have combined to make Franklin one of most pleasing and prosperous of the counties of the State. Reaching to the Canadian line, indented by Missisquoi bay, Maquam bay and the Great Back Bay, traversed by the Missisquoi and Lamoille Rivers and many smaller streams, its agricultural interests developed to an enviable state of excellence and its manufacturing possibilities largely realized, this county ranks with the most favored portions of the state in productiveness, progressiveness and prosperity.

Along the lake shore are numerous resorts where the summer visitor may find the best of entertainment, while the lake itself, the streams flowing into it, and the small ponds not far away will furnish fishing in plenty of the highest quality.

Lake Carmi or Silver Lake in Franklin draws many visitors every year.

St. Albans, the principal city, is one of the most pleasing to visitors in its natural attractiveness and well kept appearance, its charming views, handsome residences and wide, shaded streets. Here is the headquarters of the Central Vermont railway and important manufacturing industries. Close by, easily reached by trolley car, is St. Albans Bay, with its fleet of yachts and motor boats. This is the town that Henry Ward Beecher characterized as having "a greater variety of scenic beauty than any other that I can remember in America."

Richford and Enosburg are important manufacturing towns and Missisquoi Park and springs in Highgate are places of popular resort.

Grand Isle County.

This smallest of the counties is composed of five towns, four on three of the largest islands of Lake Champlain and the fifth on the northern mainland. The streams are small and the country generally level. Bridges connect the islands with each other and the main land and the firmly packed roads winding close by curving shores and smooth sandy beaches offer some of the most enticing drives to be found in the State. Within easy reach of the best of lake fishing and easily reached by the Rutland railroad, which has bridged the water across the county, Grand Isle presents many attractions.

This is the finest apple growing section of Vermont. Soil, climate and water supply exist in just the proper proportion for the production of high class fruit. Modern and scientific methods are applied by the orchardists and more than one crop is sold on the trees for several thousand dollars. Though not so large as some of the apples grown in the west under irrigation, the Vermont product surpasses them in flavor, and buyers from New York visit Grand Isle every season to secure the pick of the crop.

Lamoille County.

This is one of the smaller and inland sections, with railroad connections to the east and west, smooth and sandy in some sections, rocky and mountainous in others, containing some of the best farms in the State, granite, asbestos and talc deposits and a natural paint mine. It is the seat of some important industries, the best known being that of handling of green calf skins, developed at Hyde Park by Carrol S. Page, former governor and now United States Senator. This is the largest industry of the kind in the world and its business extends all over the world.

The building of a municipal dam at Morrisville has created an artificial lake several miles in extent which is widely used for boating and provides excellent fishing.

Stowe is one of the most charming of Vermont villages, the terminus of the electric road connecting with the Central Vermont at Waterbury, and is the point of departure for climbing Mount Mansfield.

Boating, bathing and fishing are afforded by the numerous lakes and streams and good hunting may be had in its season.

Orange County.

Lying along the Connecticut River, in the eastern part of the State, Orange county contains some spots of rare beauty and points of historic interest. Its intervalles along the river are some of the best of farming land and present scenes of peaceful quietude and there is little of wild and rugged scenery within its borders.

Some of the earliest settlements on the eastern side of the State were made in this county and many traces of Indian occupancy have been found in Newbury.

On the side of Wright's Mountain in Bradford is a cave called the Devil's Den, in which are several apartments and which is believed to have been used in early times as a human habitation. In this town were made the first school globes ever manufactured.

Fairlee was the home of Samuel Morey, who ran a steamboat on Fairlee pond, now Lake Morey, a year or two before Fulton's Clermont was built. Chagrined at the advantage gained by Fulton, dishonestly, as he believed, he sunk his boat in the lake and it has never been recovered.

Strafford was the home of Justin S. Morrill, for many years United States Senator. It contains a large quantity of copper ore which has been worked with varying degrees of success since 1793.

Valuable mineral springs in Williamstown have been celebrated for more than half a century.

Lake Morey has afforded good fishing for many years and several cottages and hotels have been erected on its borders, while smaller lakes offer good opportunities and plenty of accommodations may be found.

Orleans County.

This is a county of lakes. Memphremagog, stretching far into Canada, dotted with many islands, whitened with many sails of pleasure boats and traversed daily by a handsome and commodious steamer, takes precedence. At Newport, on the lake shore, is the Memphremagog yacht club which is developing an interest in water sports.

Willoughby lake in Westmore, guarded by Mount Pisgah and Mount Hor, has more of rugged grandeur. Seymour lake in Morgan and Pensioners pond in Charleston are large and beautiful bodies of water. Caspian lake in Greensboro is one of the finest fishing grounds in the State and is surrounded by a large number of expensive summer cottages. Long pond in Glover draws many visitors every season.

There are first class hotel accommodations at Newport and Barton and travelers will have little trouble in securing accommodations in the smaller towns.

Newport is the home of G. H. Prouty, former governor, and the lumber company in which he is interested is one of the largest in New England. In Derby, just across the lake, lives Josiah Grout, also an ex-governor. Newport is the head of the customs district of Memphremagog and a handsome government building has been erected there.

Rutland County.

The most populous county in the State also possesses some of the greatest attractions. Pico, Killington and Shrewsbury are mountain peaks that tower high above the surrounding country, and smaller elevations are often visited by lovers of beauty.

Lake Bomoseen in Castleton covers 15,000 acres and is surrounded by palatial hotels and handsome cottages. Glen and Benson lakes in the same town are interesting resorts. Lake St. Catherine in Poultney and Wells covers more than 2,000 acres. Both this and Bomoseen are large enough to afford ample opportunity for boating as well as excellent fishing. The forests are abundantly stocked with game. It was in Rutland county that a small herd of deer was placed thirty years ago, which has increased to the large number that roam the forests of the State today.

At Sudbury is Hyde Manor, one of the popular resorts of the State.

Medicinal springs in Clarendon became famous for their cures early in the last century and still maintain their reputation.

The first medical college in the State was established at Castleton and the old buildings now form a part of the Castleton normal school.

At Rutland are manufactured the famous Howe scales. Governor John A. Mead is president of the Howe Scale Company.

The Vermont Marble Company at Proctor, founded by Senator Redfield Proctor and now managed by his son, Ex-Governor Fletcher D. Proctor, is the largest concern of its kind in the country.

In Rutland is also a large manufactory of maple sugar makers' tools and apparatus, and in Poultney and Pawlet are extensive slate quarries producing some of the best slate manufactured.

Washington County.

Here is Montpelier, the State capital, shaded, quiet, with handsome public buildings and the financial center of the State; Northfield, the site of Norwich University, a military school second only to West Point in the estimation of the war department; Barre, the center of the granite manufacturing industry of the country; Waterbury, the home of one of the best managed hospitals for the insane in the country.

The Winooski river traverses the county from east to west and this with its numerous branches, with the addition of the Dog river just below Montpelier and two rivers that join it at Waterbury, is one of the principal streams of the State and furnishes an abundance of water power used in producing electric power, while on the Mad river are two power plants.

In Woodbury, with its thirty ponds, is one of the finest places for a summer outing to be found in the State, and there are numerous other ponds and many streams that invite and reward the angler.

Camel's Hump is reached by an easy climb from Waterbury or Duxbury and the shelter at the summit is now open for visitors.

The Mayor of Montpelier is secretary of the Automobile Club of Vermont and visiting motorists will receive every attention. First class highways extend through the county providing many pleasant drives, and excellent hotels furnish accommodations for the traveler.

This section is reached by the Boston & Maine and Central Vermont railroads, and every desirable place in the county may be easily reached over good roads.

Windham County.

Lying next the Massachusetts border, easily reached from the great cities, with many natural and artificial attractions, this is one of the most desirable counties in the State for the summer visitor.

Brattleboro, the principal town, lies close beside the magnificent lake created by the building of a power dam a few miles below, and boating on the lake has developed marvelously since the lake came into being.

It is the home of the great Estey organ factory, of the Brattleboro Retreat for the treatment of the insane and there will soon be completed there the Austine institution for the care of the deaf, dumb, blind and feeble-minded. It is a handsome New England village, larger than some Vermont cities, with public spirited citizens and the home of many men of prominence.

The families of President Taft and of Eugene Field went from Windham county.

Guilford, in the earlier part of the last century, was the largest town in the State and for a short time was an independent republic.

Brattleboro is notable among collectors for the fact that some of the earliest postage stamps were issued there, and a Brattleboro stamp today is worth a large sum.

From the summit of Wantastiquet mountain there is a wide view of Vermont scenery to the north and a broad expanse of mountain and valley in Massachusetts to the south.

A well organized fish and game club keeps the streams and lakes well filled and the coverts well stocked, so the sportsman may find plenty to attract and amuse him, while those who seek merely the quiet recreations of country life will suffer from no lack of opportunities.

Windsor County.

If this county is noted for containing the town with the smallest population of any in the State, it has other and different demands on attention.

Royalton is of historic interest, as the town raided and burned by Indians from Canada in 1780, and a granite monument on the common commemorates that fact.

In Sharon is a monument erected by the Mormons to the memory of Joseph Smith, their prophet, on the site of the prophet's birthplace.

Windsor, the site of the State prison, maintains a large and important machine manufacturing industry, and is the home of Maxwell Evarts, son of the former United States Senator from New York, while just across the Connecticut river, in New Hampshire, is a notable colony of writers, artists and sculptors.

Woodstock has become noted as a summer and winter resort. It is a handsome, well kept village, with beautiful surroundings. The park is the center of the village and duplicates in its shape and dimensions the famous Great Eastern.

The White river, draining a large part of the county, joins the Connecticut at White River Junction, the most important railway point in the State.

Just across the river from Norwich is Dartmouth college and at Ludlow is the Black River Academy.

Extensive woolen manufactures are carried on along the Ottaquechee river and in one of the mills at Bridgewater is manufactured some of the most expensive cloth turned out in the country.

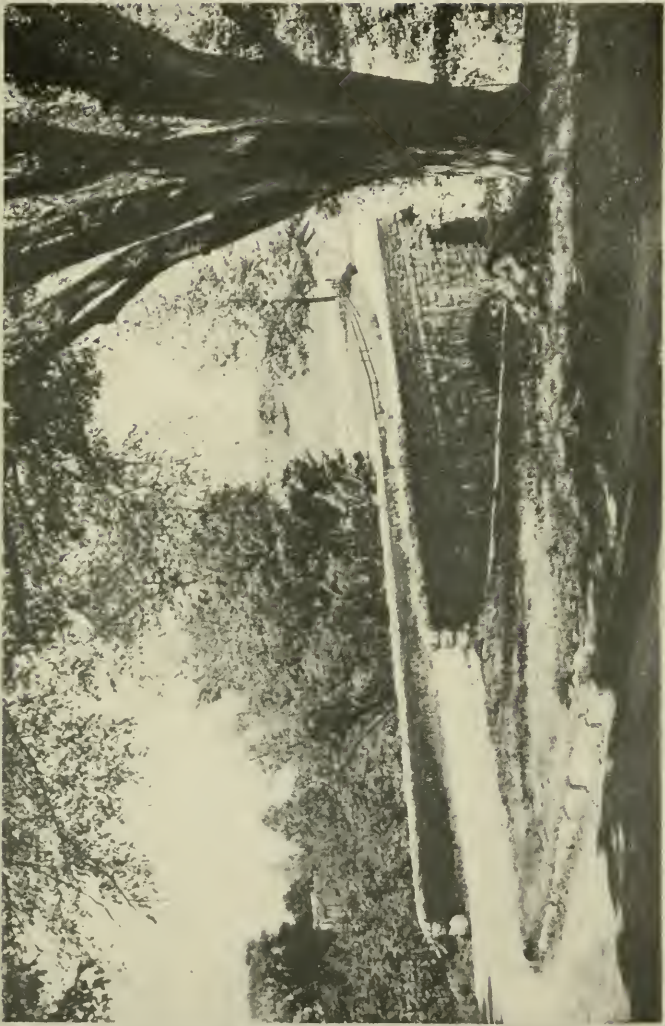
The diversified character of the scenery, the many forms of natural beauty, the ease with which it can be reached and the opportunities and attractions it offers to the sportsman and the lover of nature make this one of the most interesting sections of the State.







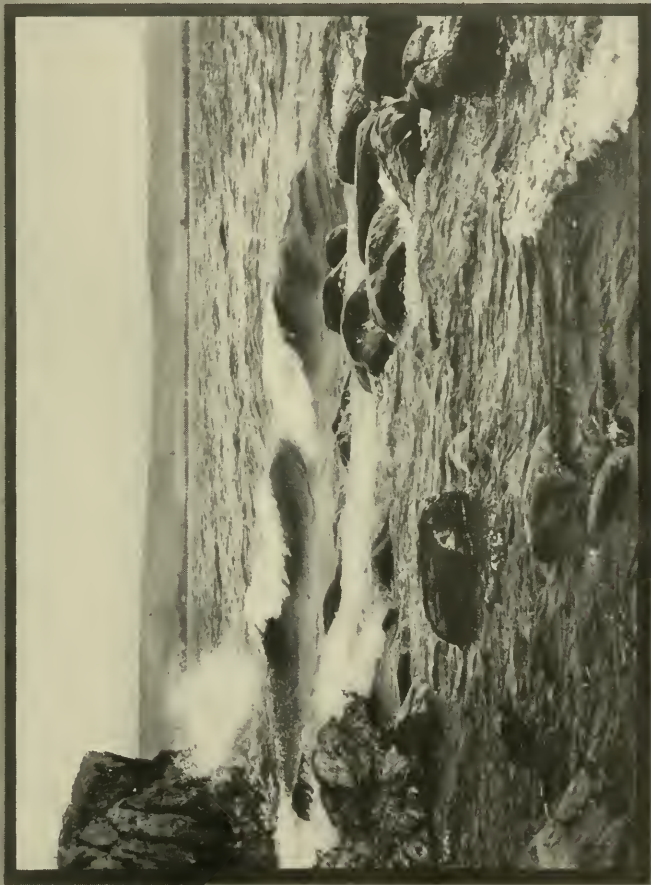














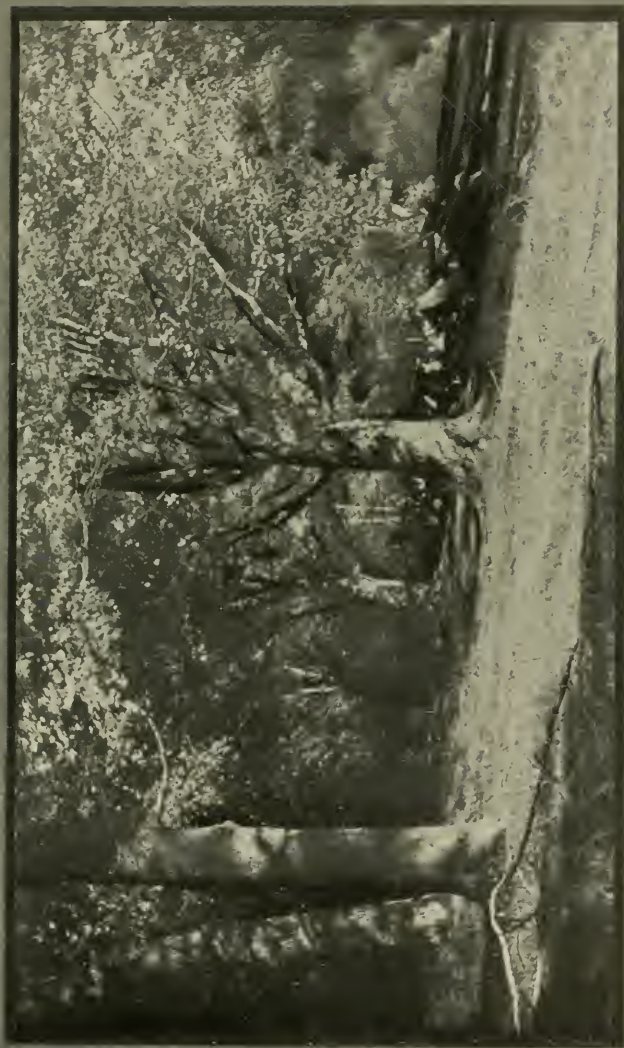


























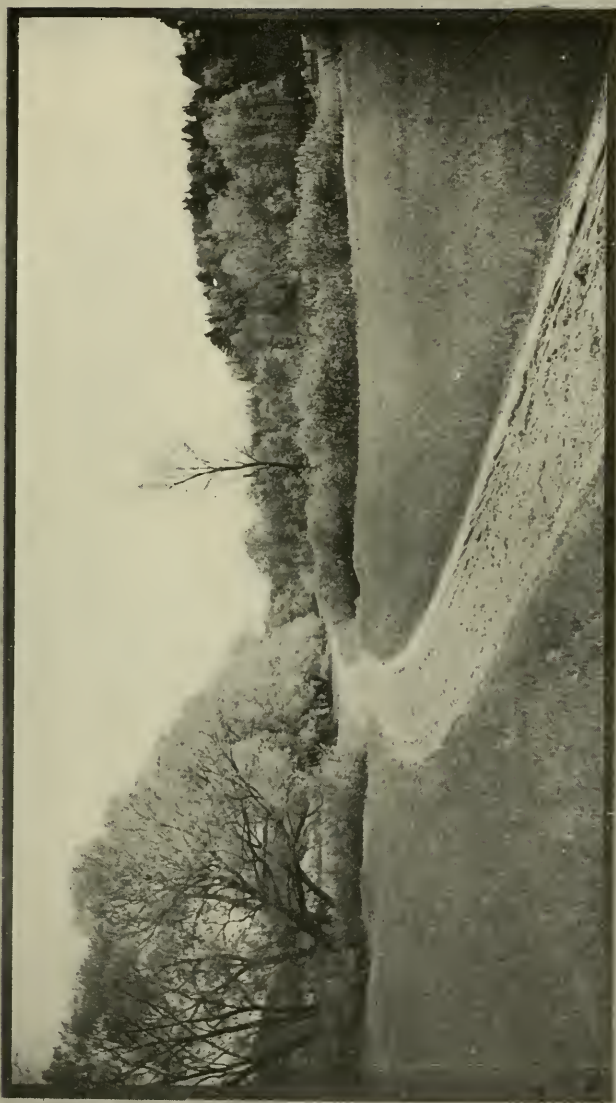


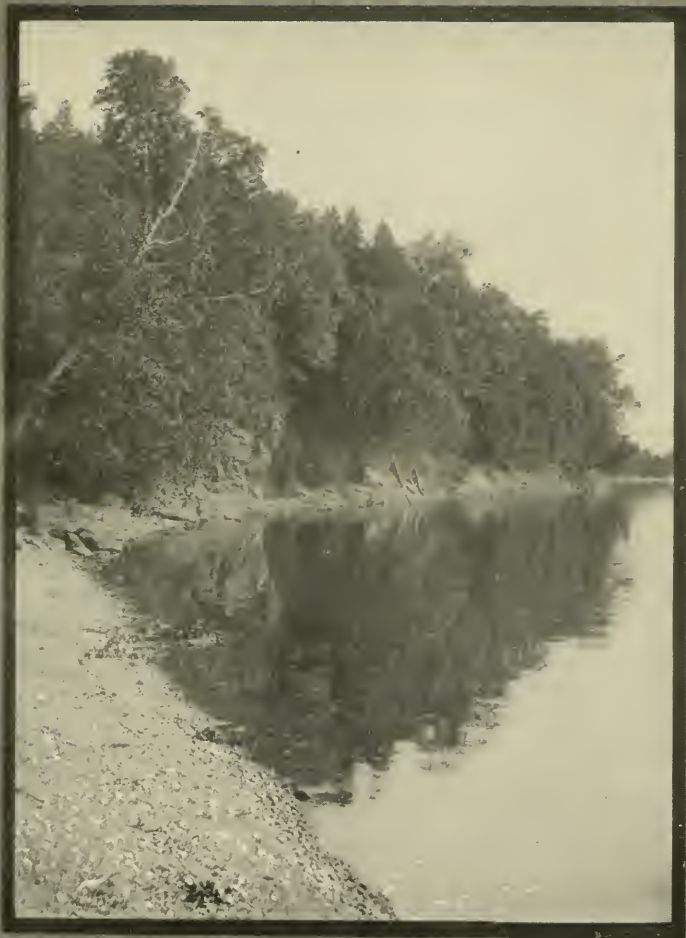
















Addison County

BASIN HARBOR.

H. F. BEACH. "The Lodge," Basin Harbor, Vt. A quiet and pleasant summer resort on the Vermont shore of Lake Champlain, twenty miles south of Burlington, four miles from Westport, N. Y., and seven miles from Vergennes, Vermont.

Lake Champlain in the foreground, the Adirondack Mountains on the west shore and the Green Mountains of Vermont to the east with intervening farms, afford attractive varied scenery.

The hotel stands fifty feet above and two hundred feet from the water, is three stories high and faces the north, has modern improvements, sanitary plumbing, hot and cold water on each floor.

Across the lawn from "The Lodge" is a cottage equipped with modern plumbing. Parties desiring the quiet of a home will find the rooms here very desirable.

The grounds consist of about one hundred and seventy acres, including a large frontage on the lake, well wooded with evergreens. "The Point" near the house is a quiet, secluded place with abundant shade and cool breezes. A meadow nearly a mile in length slopes to the southward from the house and joins the lake at Button Bay.

A fine herd of high grade Jersey cows supplies the table with the best of fresh butter, cream, milk, cheese and buttermilk. Eggs, vegetables and small fruits are also produced on the farm. There are many pleasant drives about the country. A livery in connection with the house furnishes single or double teams as desired.

Excellent lawn tennis and croquet grounds are maintained for the use of guests.

The width of the lake at Basin Harbor is about one mile and the numerous bays and harbors on both sides afford safe boating. Boats may be rented by the day or week.

The ample opportunities for out-of-door life, bathing, excellent water, abundant shade and fine scenery are among the natural attractions of Basin Harbor.

The steamboat service is frequent and convenient to all lake points. The D. & H. Steamer "Ticonderoga" leaves Basin Harbor each morning, touching at all lake points to the north and returning in the evening. The steamer "Alexander" leaves for Westport at 9:30 A. M. and returns 5 P. M., making connection with the D. & H. steamer "Vermont" for all lake points to the south.

There are many places of interest for short excursions. The famous Ausable Chasm is only thirty miles distant. Fort Ticonderoga, Fort Frederick and other historic places are within easy reach.

Excellent fishing in the vicinity of Basin Harbor is one of the strongest attractions of the place. During the early part of the season the pike fishing is at its best and the largest catches are made at this time of the year. Pickerel, perch and black bass are caught in abundance throughout the season.

Long distance telephone in the house, postoffice and steamboat landing near by. "The Lodge" opened June 1st. Special arrangements made for fall hunting and fishing parties.

Parties desiring a quiet, healthful place at a moderate price will be pleased at "The Lodge."

Terms \$9 to \$14 per week; \$2 per day. Special prices for prolonged stay.

J. G. WALKER. "The Homestead," Basin Harbor, Vt. Railroad Station, Vergennes, Vt., or Westport, N. Y., 7 miles from Vergennes and 4 miles by steamer from Westport, N. Y. Accommodates 20 persons. Terms per day \$2, or from \$8 to \$12 per week. Good fishing, boating and a fine bathing beach. Telephone. All modern conveniences. Spring water used on table. Livery connected with house. Steamboat dock, one minute's walk from house. Row boats and motor boats also connected with the house. There is also a 5 room furnished cottage that accommodates 10 persons; rental \$10 per week. Meals can be obtained at "The Homestead" if desired.

FERRISBURGH.

H. E. ALLEN. "Mile Point," Ferrisburgh, Vt. Railroad Station, Vergennes, Vt., or Westport, N. Y. Team or boat. Three furnished cottages accommodate eight to ten each. Terms \$50 per month or \$100 to \$150 for the season. Pleasantly located three-fourths of a mile north of Basin Harbor. Fine view of the mountains across the lake. Sandy beach for landing boats and bathing. Daily steamers from Vergennes, Vt., and Westport, N. Y., leaving supplies and passengers. Clerk from Basin Harbor store takes and delivers orders daily. Summer postoffice. Daily mail. Garage in connection with cottages.

NORTH FERRISBURGH.

STODDARD B. MARTIN. "Martin House," North Ferrisburgh, Vt. Conveyance, mail team. Accommodates 12 persons. Terms \$2 per day or \$10 per week. Excellent view of Adirondack and Green Mountains. Only two and one-half miles from Lake Champlain. Nice carriage driving and automobiling.

GRANVILLE.

H. C. HUBBARD. "Central House," Granville, Vt. Railroad station, Rochester, Vt., 8 miles distant. Conveyance, stage. Accommodates 25 persons. Terms, \$1.50 per day or \$8 per week. Very pleasant valley. Good automobile roads.

LINCOLN.

H. E. SHATTUCK. "Hotel Lincoln," Lincoln, Vt. Railroad Station, Bristol, Vt. Conveyance, carriage. Accommodates 20 persons. Terms \$7 to \$9 per week. Pleasantly situated in Lincoln village, on the New Haven river, in the heart of the Green Mountain range, at an altitude of 900 feet. An ideal place for summer rest and recreation. Beautiful mountain scenery, including Mt. Abraham. Pleasant drives and excellent trout fishing. Village and country life combined.

LARRABEE'S POINT.

FREDERICK IVES. "Lake House," Larrabee's Point, Vt. Railroad Station, Larrabee's Point, Vt., and Addison Junction, N. Y. Conveyance, team. Accommodates 100 persons. Terms, \$2.50 and up per day or \$10 and up per week. Lake Champlain steamers land at dock twice daily. Directly across the lake from Fort Ticonderoga. Traffic ferry from Vermont to New York state. Beautiful drives and walks of endless variety. Shady highways and pleasant woodland paths or rough cross-country tramps and mountain scaling as you desire. Almost every form of amusement is provided for both pleasant and rainy days. Fine boat livery, furnishing either yachts, motor boats, row boats or canoes. Large stable is also maintained, and saddle horses may be had. Steamer excursions on the lake visiting many places of historical fame. Pure water is another of the charms of the place and is of the most improved system.

LAKE DUNMORE, SALISBURY.

H. A. COLLINS. "Lake Dunmore House," Salisbury, Vt. Railroad station, Brandon, Vt. Conveyance, private team or automobile. Five sleeping rooms. Excellent trout fishing. Mountain climbing. Interesting places for driving and automobiling. Within easy access of Silver Lake, Ethan Allen Cave and Llana Cascade. Convenient telephone connection. Rural mail delivery every day. Other information furnished on application. Rental, \$1.50 per day.

MIDDLEBURY.

JOHN HIGGINS. "Addison House," Middlebury, Vt. Conveyance, free 'bus. Accommodates 75 persons. Terms, \$2.50 to \$3.50 per day or \$14 to \$21 per week. Largest hotel in Addison county, with commodious and well ventilated rooms, wide halls and broad piazzas. Middlebury is famous for its shaded parks and roads. Is near the post office, stores, churches and public library, yet far enough to be away from the noise and bustle of business. The house is lighted by electricity, and heated by steam; has hot and cold baths, and pure mountain spring water throughout. The generosity of the table is a proverb throughout Vermont, and everything is fresh. There are beautiful drives over good roads throughout the vicinity. Carriage and bicycle liveries. Boating, fishing and bathing. Good boats and launches are to be had when desired. Croquet, tennis and other lawn sports are freely enjoyed. Middlebury is also a college town, with attractive buildings and fine grounds.

JOHN H. SARGENT. "Hotel Logan," Middlebury, Vt. Conveyance, hack. Accommodates 50 persons. Terms \$1.50 per day or \$7.00 per week. Within easy reach of Lake Champlain, Lake Dunmore, "Bread Loaf Inn," Fort Ticonderoga, and other places of historic interest on the Vermont and New York shores of Lake Champlain. Straight half-day and night train connections with New York, Boston and Montreal.

J. J. O'CONNELL. "The Sargent House," Middlebury, Vt. Conveyance, free 'bus to and from trains. Accommodates 75 persons. Terms, \$1.50 to \$2.00

per day or \$7.00 to \$10.00 per week. Large, airy rooms, baths, large broad verandas. Cool nights. Hardwood floors, steel ceilings, fire escapes, lawns. Pure mountain water. Hunting, fishing, driving, and rowing. Good automobile garage. Middlebury college 10 minutes' walk. Adjoins Addison county fair grounds, and is two and one-half miles from United States government farm.

MIDDLEBURY COLLEGE.

SUMMER SESSION.

MIDDLEBURY, VERMONT.

IN THE GREEN MOUNTAINS. For all interested in summer study. Twenty instructors, 45 courses. Special work for teachers, college and preparatory students and college graduates. Cool, comfortable accommodations. Very low rates. Extensive campus. Tennis courts. Boating. Cross Country tramps. July 5th to August 11th. Illustrated booklet. Address.

EDWARD D. COLLINS, Director.

EAST MIDDLEBURY.

MRS. MATILDA BAKER. East Middlebury, Vt. Railroad station, Middlebury, five miles distant. Conveyance, stage or private team. Accommodates 20 persons. Terms, \$8.00 to \$10.00 per week. Near the Green Mountains. Beautiful view. Fishing, hunting, driving and automobiling. Only five miles from Lake Dunmore, "Bread Loaf Inn" or Middlebury College. Large two-story house, all modern improvements, baths, sanitary plumbing. Fine lawns and swings. Pure mountain spring water. Cool nights. Good board and homelike. Large piazzas and hammocks. Very comfortable, pleasant place for a rest.

C. W. TISDALE. "Green Mountain House," East Middlebury, Vt. Railroad station, Middlebury, Vt. Conveyance, private carriage or stage. Accommodates 30 persons. Terms, \$1.00 to \$2.00 per day and \$7.00 to \$10.00 per week. Hot water heat. Acetylene lights. Pure running water. All modern conveniences. Beautiful drives. Good fishing. Several places of interest to visit, such as Ripton Gorge, "Bertha's" Ravine, etc. Only four miles from Lake Dunmore.

NEW HAVEN MILLS.

GEORGE P. COLBY, New Haven Mills, Vt. Railroad station, Beldens, Vt. Stage conveyance. House accommodates four to six persons. Two mails daily. Only seven miles to Middlebury and four miles to Bristol, Vt. Private carriage for driving or an automobile for use. Boating and fishing.

ORWELL.

D. J. LEONARD. "Eagle Inn," Orwell, Vt. Railroad Station, North Orwell, Vt. Conveyance, carriage. Accommodates 60 persons. Terms, \$2 per day or \$10 per week. Rooms, good size and comfortable. Heated by steam

and hot air, with open fire places in public rooms. Long distance telephone. Pure running water on each floor. The fishing is excellent and the beauty of the place affords one of the most delightful picnic places imaginable. Fine tennis court and croquet ground on the lawn directly east of the "Inn." Beautiful drives in all directions, commanding a view on the east of the Green mountains and on the west of the Adirondacks. Lake Champlain lies hidden in the intervening valley, visible for some three miles of its length from the "Inn," and that "Queen of Lakes"—Lake George—a vast reservoir of nature, lies suspended in the mountains, two hundred fifty feet above the level of Lake Champlain. Lily Pond, noted for its pond lilies and restful surroundings, is but a short distance away. Sunset Lake, one of the beauty spots of Vermont, is only four miles from the "Inn," and reached over one of the most delightful of drives. Every attention for the comfort of the guests.

C. M. COOKE, "Elmwood," No. Orwell, Vt. Conveyance, carriage. Accommodates 15 persons. Terms \$1.50 per day. Ten dollars per week. Beautiful location, situated between Lake Champlain and Sunset Lake. Large, airy rooms. Extra table. Beautiful drives. Excellent views. Garage in connection with house. Special care for the comfort of guests.

RICHVILLE.

MRS. PLUMA COOK, Richville, Vt. Railroad station, Shoreham, Vt. Conveyance, stage, twice daily. Accommodates six persons. Terms \$1 per day or \$7 per week. Woods and hills near by; fine place for campers. A small stream flows near which affords good fishing. Postoffice within a few rods of the house. Mail twice daily.

SHOREHAM.

H. B. COOK, Shoreham, Vt., about five minutes' walk from railroad station. Accommodates four persons. Terms \$7 per week. Very quiet, pleasant place for any one requiring rest. Conveyance, stage.

W. T. & J. A. SMITH. "Smith Farm," Shoreham, Vt. Railroad station, Larrabee's Point. Conveyance, private carriage. Accommodates ten persons. Terms \$1 per day or \$6 and \$7 per week. Only one-half mile from Lake Champlain. Four miles from Fort Ticonderoga. Good shady lawn and hammocks.

A. G. DUDLEY. "Bissell House," Shoreham, Vt. Conveyance, stage. Terms, \$2 per day or \$7 to \$10 per week. Is only five miles from either Fort Ticonderoga or Larrabee's Point and about fifteen miles from Fort Frederick.

STARKEBORO.

FRANK M. WALSTON. "Travelers Inn," Starksboro, Vt. Railroad Station, Bristol, Vt. Conveyance, stage. Accommodates 12 persons. Terms, \$1.50 per day or \$10 per week. Best of Vermont scenery. Best water in the country. Beautiful drives. Good fishing and hunting. A comfortable, commodious place combining desirable features of hotel and home life.

VERGENNES.

S. S. GAINES. "Stevens House," Vergennes, Vt. Conveyance, 'bus. Accommodates 150 persons. Terms, \$2.50 to \$3.50 per day or \$14 to \$20 per week. Garage in connection with house. Beautiful mountain scenery, including Mt. Marcy of the Adirondacks, Mt. Mansfield and Camel's Hump of the Green Mountains, besides many others. Excellent fishing in Lake Champlain and its tributaries, which abound in bass, pike, pickerel and other fish. There are also many trout streams a few miles back in the Green mountains. An excellent and reliable livery is also connected with the house.

J. A. GRAVELLE. "Riverside Farm," Vergennes, Vt. Conveyance, team. Accommodates ten persons. Terms \$1 per day or \$7 per week. Only one and one-half mile from railroad station. Just one mile from steamboat landing where there is a daily steamer which connects with the lake steamers. Is within 50 rods of Otter Creek, Vermont's largest river. But six miles from Lake Champlain. Beautiful mountain scenery and many pretty drives.

MRS. SPENCER G. HAWLEY. "The Spencer Place," Vergennes, Vt. Conveyance, private carriage. Accommodates 12 persons. Terms \$1 per day. Only three miles from Lake Champlain. Pleasant drives to historical points. Access to river navigation. Plenty of eggs, cream and butter. Large lawn and ample shade trees. Ideal place for rest.

W. H. NORTON. "Norton House," Vergennes, Vt. Conveyance, private carriage or 'bus. Accommodates fifty persons. Terms, \$1.50 per day or \$8 per week. Ball grounds and race track in connection with hotel. Short distance to Otter River, where fishing, boating and bathing may be enjoyed.

WHITING.

AGNES F. TREADWAY. "Maple Grove," Whiting, Vt. Post-office address R. F. D. No. 1, Whiting, Vt. Conveyance, private team. Accommodates ten persons. Terms \$6 and \$7 per week. Pleasantly located with splendid views from every window. Is in the region made famous by Ethan Allen and the events of Revolutionary times. Wooded walks and splendid drives with good roads. Post-office, church and public library only one mile distant. Four beautiful lakes near by. R. F. D., and telephone service. An ideal place for a quiet summer outing. Good accommodations for private family.

Bennington County

DORSET.

E. W. BARROWS. "Barrows House." Railroad station, Manchester, Vt. Conveyance, private carriage or stage. House has modern improvements, sets back from road out of dust from autos; large shady lawn and park. Pure spring water. Vegetables and milk from house, garden and dairy, respectively. Three minutes' walk to Casino—with golf, tennis, croquet, etc. Accommodates 25. Thirty guests, 1910, principally from Brooklyn and Troy, N. Y., Jacksonville, Fla., Toledo, Ohio. Terms, \$2.50 per day, \$10 to \$12 per week. Good livery connected. Garage.

JOSEPH T. SAFFORD. "Dorset Inn." Railroad Station, Manchester Depot, six miles. Conveyance, stage. Three daily mails. Situated in one of the most healthful places in New England. Pleasant drives to many points of interest. Beautiful scenery. Good hunting and excellent trout fishing. Golf Links and Club House of the Dorset Field Club near the Inn. Table supplied with meats, fresh butter, eggs, vegetables, milk, cream, etc., from farm connected. Modern sanitary improvements. Garage. Accommodates 35. Terms \$2.50 per day, \$14 to \$16 per week. Write for booklet.

MRS. C. N. WILLIAMS. "Comfort Farm." Railroad Station, Manchester Depot. Conveyance, livery from house. Beautiful scenery; pleasant drives. One-half mile from village, Club House with golf. Garage. Accommodates ten. Ten guests, 1910, principally from New York City and Albany, N. Y., Wellesley College. Terms, \$8 and \$9 per week.

MANCHESTER.

"EQUINOX HOUSE." George Orvis, Proprietor, A. E. Martin, Manager. Railroad Station, Manchester Depot. Conveyance, carriages and 'bus. Healthful location, beautiful scenery, delightful drives. Near the famous Ekwanok Country Club—golf course, tennis, etc. Good trout fishing. Modern improvements. Vegetables from farm. Every effort is made to make our table second to none. Accommodates 250. Guests, 1910, 6,000, principally from New York, Brooklyn, Philadelphia, Boston, Chicago and State of Connecticut. 2,400 automobiles registered season 1910. Garage, hotel for chauffeurs. Terms, \$4.50 and upward per day, \$25 and upward per week. Write for booklet.

C. H. WILLARD & Co. "Orchard Park." Railroad station, Manchester Depot, Vt. Conveyance, auto and 'bus. Golf. Garage. Accommodates 100. 8000 guests 1910. Terms, \$3 per day, \$17.50 per week.

COTTAGE: PRETTILY FURNISHED, TO RENT. Here in a superb, easily accessible mountain region, the Green Mountains and Berkshire Hills combined

with a choice location and one thousand feet elevation, on edge of New England's fairest old interesting village, is a *prettily furnished cottage to rent*, with modern bath room and kitchen, and abundant ever flowing mountain spring water, within six hundred feet; over a level ever dry, electric lighted highway of "Macnaughtan's," Manchester, Vermont, the Ethan Allen, Seth Warner Revolutionary region.

We are prepared to rent this convenient Cottage right on the grounds with or without servants, table board or anything else required.

If interested in particulars kindly write now. "Macnaughtan's" Manchester-in-the-Mountains (1000 feet above sea), Vermont, open all year.

MANCHESTER CENTER.

F. E. BOND. "Colburn House." Railroad station, Manchester, three-fourths mile. Conveyance, bus. Situated high and dry; air fine. Good roads, beautiful scenery. Nice fishing and hunting. Golf links in country. Good livery and garage connected with house. Pure spring water, milk and cream, fresh vegetables and creamery butter a specialty. Accommodates 25 to 40. Guests 1910, principally from Boston, Brooklyn, New York and Danbury. Terms, \$2 and upward per day, \$10 and upward per week. Write for booklet.

MANCHESTER DEPOT, VT.

A. L. CARPENTER. "Battenkill Inn." Railroad Station, Manchester. Sidewalk from house to depot. New, modern and up-to-date. Nice large piazza. Rooms with or without bath. Located on direct touring route Albany to White Mts. Air and water unsurpassed. Good livery connected. Garage. Twenty-five rooms. Terms, \$2 and upward per day, \$14 and upward per week.

PERU.

D. E. HAPGOOD. "Bromley House." Railroad station, Manchester or South Londonderry. Conveyance, stage or private conveyance. Delightful climate and scenery. Altitude, 2,000 ft. Trout fishing, pleasant drives, tennis and bathing. Accommodates 40. Season 1910, 675 guests principally from New York, Montclair, Elizabeth. Terms, \$3 per day, \$12 to \$15 per week. Write for booklet.

READSBORO.

MRS. C. F. SNOW. "Cottage House." Railroad Station, three minutes walk. Terms, \$2 per day, \$10 to \$12 per week.

HEARTWELLVILLE.

DR. G. E. MORGAN. "Heartwellville Inn." Railroad Station, Readsboro, Vt., or North Adams, Mass. Conveyance, stage, or carriage from house. Altitude, 2,000 ft. Beautiful drives. No mosquitoes. Brook trout fishing. Upper and lower piazzas; every room an outside room. Fine spring water and good home cooking. A quiet, healthful place with refined hosts. Accommodates 20. Terms, \$2 per day, \$10 per week.

CANEDY & OSBORN, Proprietors. "Maple Row Inn." Railroad Station, Readsboro, five and one-half miles. Conveyance, stage. Altitude, 1800 ft. Good air and spring water. Homelike house with broad veranda 190 feet long. Within 10 rods of West Branch of Deerfield River. Beautiful drives. Nice trout fishing. Terms, \$8 to \$14 per week. Write for booklet.

RUPERT.

H. N. PERRIN. "Rupert House," Rupert, Vt. Only three rods from the station. Accommodates ten persons. Terms, \$1.25 per day or \$5 per week. Good roads for driving and automobiling. Elegant view of the mountains. Small park in front of the house which affords shade and quiet. Swings, hammocks, etc. Livery in connection.

Caledonia County

WEST BURKE.

MRS. CHARLES F. VARNEY. "Grand View Farm." Railroad Station, West Burke. Conveyance, team. No rivers or ponds near. High, dry and healthy. Fine place for children. Would take charge of two children between the ages of two and twelve years. Pure spring water. References given. Accommodates 4. Terms, \$5 per week.

E. B. ODELL, Proprietor "The Arcadia." P. O., West Burke, Vt. Railroad Station, West Burke, Conveyance, team from house or livery at Station. Altitude, 3000 ft. Beautiful scenery. Fresh breezes of pure air. Beautiful lakes. Boating, fishing and bathing. Good hunting opportunities. Room in barns for autos. Residences of some of principal guests last season, New York City and Albany, N. Y., New Haven and Waterbury, Ct., St. Johnsbury, Vt. Accommodates 50. Terms, \$2 per day, \$8 to \$12 per week.

DANVILLE.

H. M. OSGOOD "Elm House Hotel." Railroad Station, Danville, Vt. Free 'bus. Altitude, 2000 ft. House has been remodeled throughout and we are able to give summer boarders first class accommodations. Accommodates 50. Terms, \$2 per day, \$8 to \$12 per week. Garage.

C. W. THURBER, Proprietor. "Thurber's Hotel." Railroad Station, Danville, Vt. Conveyance, carriages. One of the finest views in New England. Many pleasant walks and drives, good automobiling. Good brook and lake fishing. Fresh butter, milk, eggs, berries, etc., supplied from farm connected with the house. Pure spring water. Large, broad piazzas. Modern sanitary arrangements. First class livery connected. Accommodates 35. Guests season 1910, 25. Principally from New York and Brooklyn, N. Y., Boston, Mass., Washington, D. C., Chicago, etc. Terms, \$2 per day, \$9 to \$12 per week. Write for leaflet.

GROTON.

MRS. HELEN M. WELSH. "Groton House." Railroad Station, Groton, Vt. Garage. Terms, \$2 per day. Write for further particulars.

HARDWICK.

GEORGE F. DANIELS. "Hardwick Inn." Railroad Station, Hardwick. Conveyance, free coach. Good drives. Fine scenery. Six miles from Caspian Lake. Fine spring water. Accommodates 40. Terms, \$2 per day, \$10 per week.

LYNDONVILLE.

H. L. DOYLE. "Hotel Lyndon." One minute from Railroad Station at Lyndonville. Mountain scenery. Nice drives. Fishing in small streams. Garage. Accommodates 80. Terms, \$2 per day, \$7 to \$12 per week.

PEACHAM.

WALTER H. BAYLEY. "Mountain View House." Railroad Station, Barnet, Vt. Conveyance, stage, also team from hotel. Altitude, 2000 ft. Beautiful scenery, fine roads. Library and P. O. near. Lake and brook trout and perch fishing. Partridge, woodcock and fox hunting in season. A clean, quiet place for rest and some recreation. Home produced vegetables, milk and cream. No mosquitoes, black flies, extreme heat, hay-fever or malaria. Livery connected. Terms, \$2 per day, \$7 to \$10 per week. Write for booklet.

SOUTH RYEGATE.

J. R. WHITCHER. "Mountain View Farm." South Ryegate, Vt. Private conveyance. Accommodates 12 persons. Terms, \$2 per day, or \$7 to \$10 per week. 2,000 ft. above the sea level. Always cool. No mosquitoes. Good trout fishing. Beautiful walks and drives. All modern conveniences. An especially pretty, quiet place for a rest. Those interested in botanizing will find a good field for work. Ferns and orchids are especially plentiful.

ST. JOHNSBURY.

H. E. MOORE. "St. Johnsbury House." Railroad Station, St. Johnsbury. Conveyance, 'bus. Near museum, library, etc. Pleasant drives and walks. Golf links and tennis courts. Good garage. Accommodates 100. \$2 to \$3 per day, \$10 to \$20 per week. Write for further information.

Chittenden County

BURLINGTON.

VAN NESS HOUSE, Burlington, Vt., on Lake Champlain, U. A. Woodbury, Proprietor. E. P. Woodbury, Manager. The Van Ness is the only hotel in the city with any verandas. This hotel is one of the largest hotels in the State, while its appointments and service are *PAR EXCELLENCE*. The Van Ness is of brick, 200 feet on Main Street and 125 feet on St. Paul Street, four stories, and faces the beautiful public square, where an excellent military band discourses music several evenings each week during the summer season. The Van Ness stands high above the lake, and affords a magnificent view, from nearly all the rooms, of matchless Champlain at its broadest part, Shelburne Bay, the Islands, and the towering Adirondacks to the west. To the east are the fertile farms of Vermont, Mansfield, Camel's Hump, and the various peaks of the Green Mountain chain. The Van Ness House presents large and inviting public rooms; they have been entirely remodeled and refurnished; a fine dining room with a capacity of 250 persons and commodious, airy, and well ventilated sleeping rooms, together with *SUITES* with bath. There is not an inside room in the house. An elevator renders all floors easily accessible; electric lights; fire escapes and automatic sprinklers. Broad, double piazzas, and a large sunset parlor upon the roof with a beautiful view of the lake. Livery, with saddle horses and every class of vehicle. The cuisine, in charge of a competent chef, is kept up to a high standard, and the service is always the best. Artesian well water drawn through 360 feet of solid rock. The ice used in the hotel is manufactured by the hotel. Send for pamphlet descriptive of hotel and Burlington.

HOTEL VERMONT, Burlington, Vermont. A. Burbank, Manager. This attractive Hotel will cater to the Tourist and Commercial trade, offering very comfortable accommodations for a long or short visit in the beautiful Green Mountains and at the shores of Lake Champlain. Burlington is a stop-over point for travellers from all directions, and is a delightful and interesting place to break one's journey. The Hotel Vermont is conducted on the American Plan. Best located and best equipped, and in the business center, fronting a beautiful park, within one block of Post Office and Custom building, City Hall, Theatre, etc. Hot and cold running water with telephone in rooms. Two Otis electric elevators and all modern equipment is provided as is the case throughout the hotel. The lobby is luxuriously furnished. The Hotel Vermont and its appointments, service and management will please you. The roof of Hotel Vermont is one of the highest elevations in the region round about, affording a high-hill view of this wondrous lake and mountain country. Spacious roofed lounging rooms with outside spaces tiled and canopied, and parapet openings fitted with wrought iron grille work, afford a quiet, restful retreat. Burlington is world-famed for its sunsets and mountain scenery. But it has a new altitude in this roof garden. The magnificent distances up and down

Lake Champlain, the boldness of the Adirondacks in the West, and the outlines of the Green Mountains with Mount Mansfield and Camel's Humps so near at hand—these are an indelible charm. One has not seen the mountains and lake until he has seen them in summer and winter, and Hotel Vermont, as a year-round hostelry, is unsurpassed in all this northern country. Garage and livery in connection with the Hotel. Send for descriptive pamphlet.

T. H. MURPHY, Proprietor. "Sherwood House." 'Bus to and from all trains. Telephone and running water in all rooms. Street cars pass the hotel. Accommodates 300. Terms, \$2.25 and upward per day, \$14 and upward per week.

E. B. COLLINS, 298 South Union Street. "The Maples." Within ten minutes ride by street car to railroad station and steamboat dock. View of Lake Champlain and the Adirondacks from all rooms. Hot and cold water in all rooms. Large lawn with large elms. Finest street in the city. Accommodates 40. Forty-five guests season, 1910, principally from New York City, and Albany, N. Y., Philadelphia, Boston, Hartford, Washington, D. C. Terms \$1.50 per day, \$10 per week.

THE UNIVERSITY OF VERMONT SUMMER SCHOOL. The University of Vermont is unusually well situated for summer work. The cool breezes from mountains and lake are invigorating, the scenery is beautiful, the surroundings are full of historic and scientific interest.

The Summer School offers GRADUATE COURSES leading to the master's degree, COLLEGE COURSES for which credit is given, TEACHERS COURSES in educational theory and methods of instruction, a LIBRARY COURSE for the benefit of librarians and teachers who wish to learn library methods. The Billings Library affords a comfortable place to work in the summer, and the laboratories of the institution are open for research work. A number of public lectures will be given during the session and entertainments and social gatherings will brighten the season. Excursions to points of interest will be arranged at small cost, and field trips for scientific study will form a valuable part of the natural history work. The college dormitories and boarding house provide living at low rates. For information address Director of Summer School, Burlington, Vermont.

COLCHESTER.

GEORGE F. GALE. "Sunset Lodge." Railroad Station, Milton, Vt. Conveyance, carriage. One of the most extensive views on Lake Champlain; wide, sandy beach about one-half mile long. Excellent fishing—bass, pickerel, perch, etc. Good boating and bathing; private dock for landing any size boat. Hotel built this season. Accommodates six. Terms, \$2 per day, \$10 to \$14 per week.

ESSEX JUNCTION.

WALTER B. JOHNSON. "Johnson's Hotel and Depot Cafe." Railroad Station, Essex Junction. Many pleasant drives. Six miles to Burlington and to Mallet's Bay, one of the most picturesque bays of Lake Champlain. A central, quiet resting place. Livery connected. Good horses and complete turnouts at reasonable prices. Garage. Accommodates 50. Terms per day, \$2.50, per week, \$14.

ESSEX CENTER.

R. E. ENNIS. "Hotel Essex." Within 60 rods of station. One hour's ride from Lake Champlain. Feed stables connected. Fine view of mountains, pleasant walks and drives. Large, airy rooms, good shade, piazza. Accommodates twelve. Terms, \$1.50 per day, \$7 per week.

A. C. PRATT. "Mountain View House." Railroad station, Essex Center. Conveyance, team. Auto livery near by. Five minutes' walk to station and post office. One hours' drive to Burlington, Lake Champlain and Mt. Mansfield. Six trains daily. Large shady lawn, beautiful scenery and sunsets. Light, cool and airy rooms. Good table. Accommodates fifteen. Some of the guests, season 1910, were from Lexington, Mass., Jamaica and New York City, N. Y., Rockville, Maryland, and Washington, D. C. Terms, \$1 per day, \$5 to \$7 per week.

FAIRFAX.

MRS. JULIA B. SAFFORD. "Mountain Ash Cottage." Railroad station, Georgia, four miles. Stage or private conveyance. One mile from village. Long distance telephone. Good roads. Automobiles in village for the accommodation of those wishing them. Very pleasant and quiet. Beautiful scenery. A fine, well shaded lawn. Croquet ground. No children in family. Accommodates from eight to ten. Terms, \$1 per day; for several weeks, \$6 per week.

MILTON.

GEORGE L. MORSE. "Camp Watson," Milton, Vt. Conveyance, private. Accommodates 45 persons. Terms, \$2 to \$2.50 per day; \$9 to \$14 per week. Ideal summer resort. Only 50 feet from the water. Good fishing, bathing, boating and games. Bath and all sanitary conditions. Daily mails and telephone. Good table. Comfortable beds. No extra charge for boarders for boat.

"CAMP WINNISQUAM." A camp for boys personally conducted and supervised by Mark H. Moody, Waterbury, Vt. Situate twelve miles north of Burlington on the shore of Lake Champlain. Mallet's Bay lies below on the south, and to the north are the Lamoille River and the famous Sand Bar Bridge. Across the bay are South Hero and Grand Isle, and beyond, the Adirondack Mountains. The famous Ausable Chasm is almost directly

across the lake. One mile of white, sandy beach forming a sheltered harbor, wooded land and meadows, broad athletic fields. An ideal spot for a boys' summer camp. Pure spring water. Camp is supplied with milk, butter, chickens, eggs, vegetables, etc., from the camp farm. Early fruit from its orchard. Study and tutoring rooms; books, magazines and papers are accessible to all. Camp physician. Baseball, golf, field sports, tennis, aquatics, boating, swimming, fishing, etc. Saddle horses from the stable of the director. Riding lessons given. Many excursions by land and water. Write for booklet giving full particulars. References.

RICHMOND.

HERBERT STOCKWELL. "Maple Hill Farm." Railroad station, Richmond. Conveyance, teams. Very pleasant location. Near good fishing; within short distance of camping ground and cove. All kinds of game. Prefer young ladies. Accommodates four. Terms, \$10 per week.

SHELBURNE.

MRS. IDA H. READ. "Cedar Hedge Farm." Railroad station, Shelburne, two and one-fourth miles. Private conveyance. Lovely views, beautiful drives, quiet and restful. Shelburne Pond half mile away. Piano, long distance telephone. Daily mail, R. F. D. Accommodates ten. Nine guests season 1910, principally from Ocean Grove, N. J., and New York City. Terms, \$5 to \$7 per week.

UNDERHILL.

G. I. LINCOLN. "Custer House." Railroad station, Underhill. Free bus. Mt. Mansfield is principal attraction. Good drives and trout fishing. Accommodates 20. Guests last season principally from Boston, New York, and Burlington, Vt. Terms, \$2 per day, \$7 to \$12 per week.

W. L. BENNETT. "Mountain House." Railroad station, Underhill, Vt. Stage twice daily. Nearest hotel to Mt. Mansfield Summit (five miles). Beautiful drives and walks. Cool evenings. No mosquitoes. Bracing air. Can accommodate automobilists. Accommodates 25. Guests season 1910 principally from Boston, New York City, Detroit, New Orleans, and Burlington, Vt. Terms, \$1.50 per day, \$7 to \$10 per week.

Essex County

BRUNSWICK.

"PINE CREST LODGE." D. O. Rowell & Son, Proprietors. Railroad station, North Stratford, N. H. Conveyance, team. Situated on a plateau in center of lakes, rivers and groves, surrounded by lofty peaks, near the Brunswick White Sulphur Springs, the waters of which are of great medicinal value. A few rods from Silver Lake, a beautiful sheet of water one mile in circumference. Boating and fishing. Tennis court, croquet grounds and lovely walks around the lake. Vegetables, milk and berries supplied by farm in connection. Accommodates 25. Guests from Iowa, Kansas, Lower Canada and all the New England States. Terms, \$2 per day, \$8 to \$10 per week. Write for booklet. References given.

CANAAN.

"CANAAN HOUSE." W. M. Buck, Proprietor. Railroad station, West Stewartstown, N. H. Conveyance, bus. Transient hotel. Ten miles from Averill; nine miles from Leach Pond; plenty brook and pond fishing. Accommodates 30. Terms, \$2 per day, \$10 to \$12 per week. First class livery connected. Electric lights, steam heat, baths.

CONCORD.

"WEST CONCORD HOUSE." F. R. Joslyn, Proprietor. Railroad station, Concord. Conveyance, teams. Accommodates 30. Fifty guests season 1910. Terms, \$2 per day, \$10 per week.

EAST CHARLESTON.

"UNION HOUSE." C. O. Goodwin, Proprietor. Railroad station, Island Pond. Conveyance, stage. One mile to Echo Pond. Finest lake trout and black bass; brook trout. Deer hunting in season. Fox hounds kept at the house. Beautiful scenery. Accommodates 25. Guests season 1910, 1000, principally from Massachusetts, New York, and Rhode Island. Terms, \$1.50 per day, \$7 per week.

ISLAND POND.

"STEWART HOUSE." Geo. O. Peverly, Manager. Railroad station, Island Pond. Situated above village of Island Pond overlooking the lake. Beautiful view from its broad verandas facing south and east. 54 large, well ventilated rooms, electric lights, steam heat, etc. Garage. Pure spring water. Fresh butter and eggs from nearby farms. Good fishing and hunting. Licensed guides at disposal of guests. Accommodates 100. Terms, \$2 per day, \$10 to \$14 per week. Write for booklet.

LUNENBURGH.

"THE HEIGHTS HOUSE." A J. Newman, Proprietor. Railroad station, Lunenburgh, Vt., or Dalton, N. H. Conveyance, teams from the Heights House on notification. Altitude, 1639 feet. Beautiful view of White Mountains, a part of Franconia Mountains. Drives unsurpassed for natural scenery and quiet beauty. Silsby Pond, 1 mile distant. Trout brooks near by. Table supplied with vegetables, fruit, eggs, butter and cream from near by farm. Electric lights and baths. Livery connected. Accommodates 35 to 40. Terms, \$2 per day, \$8 to \$12 per week. Special rates to teachers and clergymen staying during the months of July and August. Write for booklet.

Franklin County

EAST BERKSHIRE.

"AVON HOUSE." Dick W. Paul, Proprietor. Railroad station, East Berkshire, Vt. Accommodates 15. Terms, \$2 per day, \$6 per week.

ENOSBURGH FALLS.

"QUINCY." L. D. Hart, Manager. Railroad station, Enosburgh Falls. Recently thoroughly renovated. Spring water. Nice parks. Good drives and fishing. Garage. Accommodates 25. Terms, \$2 per day, \$7 to \$10 per week.

HIGHGATE SPRINGS.

"THE FRANKLIN HOUSE AND COTTAGES." F. Cadorette & Son, Proprietors. Railroad station, Highgate Springs, within two minutes' walk, on Main line C. V. R., Boston to Montreal. Four trains each way daily. Situated in one of the loveliest spots of the Green Mountain State, on Lake Champlain. An unobstructed view of Missisquoi Bay. Sulphur springs noted for their medicinal properties. Delightful scenery and good roads. Boating, fishing, lawn tennis, bathing and gunning. Garage. Accommodates 150. Guests, season, 1910, principally from Boston, Springfield, Mass., New York, Philadelphia, Jacksonville, Florida, etc. Terms, \$2.50 to \$3 per day, \$10 to \$15 per week. Write for booklet.

"LAKE VIEW HOUSE." Seven cottages. E. A. Platt, Proprietor. Railroad station, Highgate springs, main line C. V. R. between Boston & Montreal. Conveyance team. Good boating, bathing and fishing. Sulphur mineral springs. Forty summer cottages and residences at this resort. Accommodates 50. Season 1910, 150 guests, principally from Boston, and Medford, Mass., New York City, Barre, Montpelier, Burlington, , etc. Terms, \$1.50 per day, \$7 to \$9 per week.

HIGHGATE CENTER.

"COMMERCIAL HOUSE." M. W. Hedding, Proprietor. Places of interest. Lake Champlain and Missisquoi River. Garage. Accommodates 12, Terms, \$2 per day, \$10 per week.

MONTGOMERY.

"MANSFIELD HOUSE." G. M. Patterson, Proprietor. Railroad Station, East Berkshire, five miles, stage twice daily. Fine drives, nice automobile road. Good trout fishing a few rods from hotel. One mile to Gates Falls, three miles to Black Falls. Garage near by. The finest of spring water, nice rooms, shady piazza. Accommodates 25. Terms, \$2 per day, \$9 per week.

MONTGOMERY CENTER.

"MARTIN HOUSE." H. O. Rowley, Proprietor. Railroad Station, East Berkshire, Vt. Conveyance, stage, or will meet parties. Splendid scenery, good drives. Nice trout fishing, accommodates 40. Guests, season, 1910, principally from New York and New England. Terms, \$2 per day, \$7 to \$10 per week.

RICHFORD.

"MOUNTAIN VIEW FARM." J. S. Moffatt, Proprietor. Railroad Station, Richford. Conveyance, carriage. Mail every day. A good-sized farm house back from the road among the trees in a very pleasant spot. An ideal place for anyone wishing rest and quiet. Excellent view. Large orchard. Accommodates 4. Terms, \$4 per week.

"AMERICAN HOUSE." J. T. Kelley, Proprietor. Railroad Station, Richford. Conveyance, hotel 'bus. Fishing, hunting and driving. Garage. Accommodates 75. Terms, \$2 per day, \$12 per week.

ST. ALBANS.

"AMERICAN HOUSE." H. A. Dunbar, Proprietor. Railroad Station, St. Albans. Street cars run to St. Albans Bay, the Great Back Bay of Lake Champlain, and to Swanton, Vt. Beautiful park, shady streets, charming sunsets. Automobile livery. Accommodates 125. Terms, \$2.50 per day, \$15 per week.

"SAMSON'S LAKE VIEW HOUSE." Samson & Son, Proprietors. On the Great Back Bay of Lake Champlain, Railroad Station, St. Albans; steamboat, St. Albans Bay. Meet guests on notice. Two mails daily (one Sunday.) Good fishing (black bass, wall-eyed pike, perch, pickerel, etc.) bathing, lawn tennis, boating, (motor and row boats.) Competent guides. Beautiful scenery. The farm supplies the table with choice fruit, vegetables, eggs, poultry, milk, cream and butter of finest quality. Malaria is unknown. No black flies or other pests. Delightful walks and charming day trips to near points of interest. Accommodates 60. Full house last season. Terms, \$2 to \$2.50 per day, \$10 to \$15 per week. Write for booklet.

"ST. ALBANS HOTEL." Owen Marron, Proprietor. Railroad station, near by, also garage. Accommodates 50. 8,000 guests, season, 1910. Terms, \$1.50 to \$2 per day, \$8 to \$10 per week.

COTTAGE. T. R. Waugh, Proprietor. Beautifully located within three rods of Missisquoi River. Large porch. Railroad Station, Swanton or Highgate Center. Accommodates 10 or 12. Terms, will rent for \$10 per week.

SHELDON.

"THE NEW PORTLAND." G. H. Thomas, Proprietor. Railroad Station, Sheldon. First class hotel in every respect. New and up-to-date. Good air.

Mineral spring water. Beautiful scenery. Fine fishing. Garage. House full of guests season, 1910. Accommodates 30. Terms, \$2 per day, \$8 to \$14 per week.

SWANTON.

“GRAND AVENUE HOTEL.” M. A. Hungerford, Proprietor. Railroad Station, Swanton. Bus to all trains. House overlooks Lake Champlain. Park directly in front. Electric connections. On main line from Boston to Montreal. Good fishing, boating, hunting. Picturesque drives. Accommodates 150. Guests season, 1910, 7,370, from principal cities United States and Canada. Terms, \$2 per day, \$12 per week.

“ADAMS HOUSE.” B. Mullen, Proprietor. Railroad Station, Swanton. Conveyance, hack. Situated on bank of Missisquoi River. Excellent boating and fishing. Hot and cold water, bath, electric light and steam heat. 600 guests season, 1910, principally tourists. Accommodates 24. Terms, \$2 per day.

Grand Isle County

ALBURGH SPRINGS.

ALBERT CHEESMAN. Private farm house. Railroad Station, Alburgh Springs on G. T. R. and East Alburgh on C. V. R., close to Lake Champlain. Sulphur springs, two minutes' walk. One and one-fourth miles to Canadian line. One mile to highest point in Alburgh which commands a fine view of the Lake and town. Fine boating and fishing. Garage. Terms, \$1 per day. Write for further particulars.

EAST ALBURGH.

MISSISQUOI BAY FISH AND GAME CLUB. Geo. D. Jarvis, treasurer, 45 Church Street, Burlington, Vt. Railroad Station, East Alburgh. The best fishing in Lake Champlain; the home of the small-mouth black bass. Best automobile roads in the State through the islands. Garage. Accommodates 40. European plan. Write for booklet.

GRAND ISLE.

BAY VIEW FARM HOUSE. Addie B. Macomber, Proprietor. Railroad Station, Grand Isle. One-fourth mile. Gordons Landing, one mile. Team will meet train or boat. Situated on lake shore, not far from good fishing. Motor boats for hire and pleasure of guests. Four miles to post-office and church. Large veranda and shady grounds; good, airy rooms. Telephone. Mail delivered daily. Vegetables in season, also chickens and eggs from farm. Good roads and pleasant scenery. Accommodates eight. Season 1910, eleven guests principally from New Bedford, Mass., New York City and Burlington, Vt. Terms, \$1.50 per day, \$7 to \$9 per week.

"SUNSET VIEW FARM." O. N. Clements, proprietor. Railroad Station, Grand Isle. Conveyance, private carriage. Situated on shore of Lake Champlain. Beautiful view of Lake and Adirondacks. Sunsets on the Lake are exceedingly beautiful. Broad veranda with awnings, large, airy rooms; bath and toilet on same floor. Milk, cream, eggs, fruits, vegetables, etc., fresh from the farm. Pleasant walks and drives; cool, shady retreats for reading and resting. Row boats for use of guests. Twenty-five guests, season, 1910, principally from Boston, Albany and Brooklyn, Glen Ridge, N. J., and Burlington, Vt. Accommodates fourteen. Terms, \$1.50 per day, \$7 to \$10 per week.

D. I. CENTER. Private residence. Railroad Station, Grand Isle. Conveyance, carriage. Delightful climate, city conveniences combined with country life. Accommodates twenty. Guests, season, 1910, 40. Terms, \$2 per day, \$8 to \$12 per week.

ISLE LA MOTTE.

"BRIGHTVIEW COTTAGE." C. W. Brown, Proprietor. Railroad station, Isle La Motte or Alburgh. Conveyance, private carriage when notified. Within a few steps of Old Fort St. Anne and monument erected by Daughters of Vermont, also New York Summer School. Thoroughly remodeled and newly furnished throughout. Good fishing and boating. Full house last season during months July and August. Guests from States of New York, New Jersey and Vermont, and Canada. Accommodates fifteen. Dining room seats 30. Automobile parties solicited. Terms, \$2 per day, \$7 to \$14 per week, according to location.

"LAKE VIEW COTTAGE." D. T. Trombly, Proprietor. Railroad station, Isle La Motte. Private conveyance. Stands on an elevation 100 feet from Lake Champlain, one-half mile from the Shrine of St. Anne. A broad, sandy beach affords excellent bathing. Good fishing. Good roads. Plenty of shade. Twenty-five guests season 1910, principally from New York City. Accommodates twelve. Terms, \$2 per day, \$10 per week.

NORTH HERO.

"IRVING HOUSE." J. H. Dodds, Proprietor. Railroad station, North Hero. Conveyance, auto buggy. Good auto roads, fishing, boating, scenery, etc. Good storage room for autos. Gasolene and oil for sale. Guests, season 1910, from New York, Albany and Troy. Accommodates four. Terms, \$2 to \$2.50 per day, \$12 per week.

"PARKER'S-ON-LAKE CHAMPLAIN." O. A. Skeels, Proprietor. Railroad station, Isle La Motte, three miles. Guests met upon request. Situated on the shore of Great Back Bay. Table supplied with best home cooking, and with milk, cream, fruit, vegetables, fresh eggs, etc., from the farm. Good fish, (home of the small mouth black bass), boating, bathing, tennis and driving. Accommodates 50. Season 1910, 150 guests. Terms, \$2 per day, \$10 to \$12 per week. Reference furnished. Write for booklet.

SOUTH HERO.

"EAGLE CAMP." George W. Perry, Proprietor. Railroad station, South Hero. Private carriage. A real camp with tents and cottages and especially managed for cultured people wishing rest and quiet. Beach, cedar groves, lake and mountain scenery. Bathing, boating, fishing, tennis. Accommodates 60. One hundred eighty-three guests last season from eight different states; principally from Massachusetts. Terms, \$1.50 per day, \$8 to \$9 per week.

Lamoille County

CAMBRIDGE.

"AMERICAN HOUSE." E. C. Wells, Proprietor. Railroad station, Cambridge. Free 'bus. Garage. Situated at foot hills of Green Mountains in the beautiful Lamoille valley. Noted for fine walks and drives and beautiful scenery. Carriage drive to Mt. Mansfield. Accommodates 50. Terms, \$2 per day, \$7 to \$10 per week.

HYDE PARK.

"PHŒNIX." Guy C. Allen, Proprietor. Railroad station, Hyde Park. 'Bus to every train. Ponds and lakes in near vicinity. Beautiful scenery; excellent fishing. Nice drives on state roads. Good livery in connection. Accommodates 100. House full most of the season 1910. Terms, \$2 per day, \$10 per week.

NORTH HYDE PARK.

Suitable as a country residence or high class boarding house. Ideal place for one seeking health and quiet rest among the beautiful Green Mountains. Situated on Gihon River. Plenty of fishing, hunting, boating and bathing. Fine automobiling country. Near Lake Eden and Lake Lamoille. Beautiful drive to Mt. Mansfield and vicinity. Fine tenting grounds and beautiful lawns. Pure spring water. Price right for whatever amount of land desired. For further particulars, address Mrs. Lona M. Allen, R. F. D. No. 1, Hyde Park, Vt.

JEFFERSONVILLE.

"MELENDY HOUSE." R. J. Pond, Proprietor. Railroad station, Jeffersonville. Hack to all trains, good livery in connection. Situated at foot of Mt. Mansfield; nearest point to Smuggler's Notch. Team from hotel will carry all guests through Smuggler's Notch and to summit of Mt. Mansfield. Beautiful scenery. Good fishing. Home cooking and a homelike place. Accommodates 25. Guests last season from Washington, D. C., Westfield, N. J., Boston, Mass., and Burlington, Vt. Terms, \$2 per day, \$7 to \$10 per week.

JOHNSON.

"HOTEL JOHNSON." A. B. Chapman, Proprietor. Railroad station, Johnson. Free 'bus. Garage. All modern improvements. Good livery. Nice drives. Trout fishing and good deer hunting in season. Accommodates 50. Terms, \$2 per day, \$7 to \$10 per week.

MORRISVILLE.

"THE RANDALL." C. F. Randall, Proprietor. Railroad station, Morrisville. Conveyance free from station. One of the best appointed hotels in

Vermont; located amid beautiful natural surroundings. Delightful walks and drives. Has every modern convenience including steam heat, open fireplaces, electric lights, etc. Broad piazzas, pleasant parlors. Good livery connected. Well appointed garage near. Accommodates 75. Some of the guests last season from Boston, New York, New Haven, Conn., and Providence, R. I. Terms, \$2 per day, \$8 to \$12 per week. Write for booklet.

STOWE.

"GREEN MOUNTAIN INN." Adah H. Currie, Proprietress. Railroad station, Waterbury. Conveyance, electric cars. Ten miles from the summit of Mt. Mansfield. Beautiful walks, fine drives, with first-class livery. Pure spring water. Home cooking. Plenty of milk, cream, fresh eggs and vegetables from the farm. House has modern sanitary improvements. Accommodates 50. Terms \$2 per day, \$7 to \$10 per week. Garage. Write for booklet.

"FARM." Willis M. Parsons, Proprietor. Railroad station, Waterbury, by electrics to Stowe. Will meet guests at Stowe village when notified. One of the finest views of Mt. Mansfield. Two miles from a pretty country village. Quiet and very pleasant. Elderly people preferred. References furnished. Accommodates two or three. Terms, \$4 and \$5 per week. Write for further information.

"SUNNYSIDE." G. N. Fisher, Proprietor. Railroad station, Waterbury or Morrisville, stage or electrics to Stowe. Conveyance, carriage. Situate about one mile from Stowe village on river road to Waterbury and to Lake Mansfield, six miles. Mt. Mansfield Electric R. R. in sight. Fine view of river, valley and mountains. Lovely scenery. Pleasant rooms, wide verandas. Accommodates five. Terms, \$10 per week.

WALTER M. ADAMS. "Summit House," Stowe, Vt. Terms, \$2.50 and \$3 per day or \$12 to \$15 per week. No more delightful resort in the New England States can be found than this—the highest peak of the Green Mountain Range, towering 4457 feet above the level of the sea. There are four routes by which to reach the summit of Mt. Mansfield, the easiest being by way of Stowe, on the east side of the mountain. The house contains 25 rooms, the kitchen being an addition at the rear. The house is neatly and thoroughly finished, and comfortably furnished. The situation commands a fine view of the Lamoyille Valley. Towards the north, the wooded side of Mt. Mansfield is visible to its very base. To the east the picture is shut in by the White Mountains of New Hampshire. Perhaps the finest view is that towards the west, where Lake Champlain occupies the center of a magnificent valley, while the sight travels on to the Adirondacks of New York. The Adams House, one-eighth mile from Stowe, managed in connection with the Summit House, Mt. Mansfield. Large pleasant rooms, fine location. Terms, \$7 to \$10 per week. Meals, \$.50. Livery.

WATERVILLE.

“MOUNTAIN SPRING HOTEL.” C. L. Westcot, Proprietor. Railroad station, Cambridge Junction. Conveyance, stage, four miles. About two miles distant is the Mountain Spring; three and one-half miles, the abandoned talc mines; both fine picnic places. Three miles to Camp Grounds. Trout stream within one minute’s walk. Fine view. Good water. Accommodates twenty. Terms, \$1.50 per day, \$6 to \$8 per week.

WOLCOTT.

“COTTAGE INN.” W. E. Barton, Proprietor. Railroad station, Wolcott. Team to all trains. Accommodates twenty. Terms, \$2 per day, \$7 per week.

Orange County

BRADFORD.

"HOTEL LOW." M. A. Gale, Proprietor. Railroad station, Bradford. A modern hotel, built a few years ago. Broad verandas entire length of front and back of house. No back rooms; every one large, pleasant, commanding a good view. Full view of Franconia and White Mountains. Lake Morey five miles distant. Beautiful drives. Trout fishing in streams near by. Tennis court and croquet grounds. Fresh vegetables from its garden, pure, fresh milk and pure spring water. A fine garage. Livery connected. Coach meets all day trains. Accommodates 80. About 400 automobile parties season 1910. Terms, \$2 and upward per day, \$7 to \$21 per week. Write for booklet.

"HOPE FARM." Mrs. Frank E. Hardy, Proprietor. Railroad station, Bradford. Free transportation of guests to and from station and church. Altitude, 1,200 feet. Faces many beautiful mountains in New Hampshire and the Connecticut River can be seen. Lake Morey, six miles distant; Hall's Pond, six miles. Purest of spring water. No pests. Large piazza, telephone, furnace, bath room. Best country table. Accommodates 16. Terms, \$1.50 per day, \$7 to \$10 per week. References furnished. Send for circulars.

"MAJOR MAY FARM." Warren E. Crafts, Proprietor. Railroad station, Bradford. Conveyance, team. Situated close to Connecticut River. Picturesque scenery, beautiful drives. All modern conveniences as electric lights, bath room, hot and cold water. Every room a pleasant outlook; Vermont hills on the west, White Mountains to the east. Fresh vegetables from garden; milk, cream, eggs, etc. from the farm. Lake Morey, five miles distant. Accommodates 12. Twenty guests season 1910, principally from Boston and Lowell, Mass., New York City. Terms, \$7 to \$10 per week. Write for leaflet

BRAINTREE.

"BRAINTREE INN." G. S. Eastman, Proprietor. Railroad station, Braintree. Beautiful scenery. Mountain climbing and fine drives. Nice trout fishing. Fresh eggs and Jersey milk. Accommodates 18. Terms, \$9 per week, \$2 per day.

BROOKFIELD.

"SUNSET HILL FARM." Mrs. George Foss, Proprietor. Randolph, R. F. D. Railroad station, Northfield, Vt., five and one-half miles. Free conveyance to and from station. Shade in yard. Cool and quiet; an ideal place for rest. Perch and pickerel fishing in Sunset Pond. Trout brook one-half mile distant. Good table board. Mail every morning. Telephone. Children not taken. Free rides frequently. Accommodates 6. Season 1910, 6 guests. Terms, \$1 per day, \$6 and \$7 per week.

CHELSEA.

E. D. BARNES, "Orange County Hotel," Chelsea, Vt. Railroad station, So. Royalton or Williamstown. Vt., conveyance, stage, carriage or automobile. Accommodates 50 persons. Terms, \$2 per day, \$7 to \$14 per week. Lovely drives and walks. Lawn tennis and croquet. Good trout fishing. The hotel is lighted with electricity, and has local and long distance telephones. Tables are supplied with pure milk and cream, vegetables and fruit in their season. Good roads for automobiles.

EAST BRAINTREE.

"SNOWSVILLE HOUSE." Salmon Williams, Proprietor. Railroad station, Randolph. Conveyance, stage. Ten good rooms. Guests last season from Massachusetts, Nebraska, etc. Terms, \$1.50 per day, \$6 per week. Write for further particulars.

FAIRLEE.

"ECHO DALE FARM." G. L. Winship, Proprietor. Railroad station, Fairlee. Conveyance, teams. Located on west shore of Lake Morey which is two miles long. One excursion steamboat on lake; motor boats. Beautiful scenery and drives. Bathing, fishing, bowling. Teams or autos ordered by telephone. Accommodates 15. Season 1910, 25 guests principally from New York, Boston, etc. Terms, \$2 per day, \$8 to \$10 per week.

"KAULIN." George H. Kendall, Proprietor. Railroad station, Fairlee, one mile. Public autos and carriages at all trains. Situated at south end of Lake Morey, of which it commands a fine view. Good fishing, boating, canoeing; best of sandy beaches for bathing. Beautiful drives and walks; plenty of mountain climbing. Many shade trees and pine groves. Private baths, hard wood floors, hot and cold water in all sleeping rooms. Fresh butter, eggs, cream, milk, and vegetables. Pure spring water. Tennis courts and baseball grounds. Accommodates 100. 1472 guests, season 1910, from New York, New Jersey, Ohio, Connecticut, etc. Terms, \$2.50 to \$3.50 per day, \$12 to \$32 per week. Write for booklet.

NEWBURY.

"MOUNTAIN VIEW FARM." J. R. Whitcomb, Proprietor, P. O. Address, R. F. D., No. 3, Groton, Vt. Railroad station, So. Ryegate. Free transportation to and from depot. Altitude, 2000 feet. Bath room, fire place. Pure spring water. Vegetables, eggs, milk, etc., produced on the farm. Always cool. No mosquitoes. Good trout fishing. Accommodates 12. Terms, \$2 per day, \$7 to \$10 per week. Beautiful walks and drives. Ten guests during season 1910. Write for booklet.

NORTH THETFORD.

"HOTEL JACQUITH." Arthur W. Jacquith, Proprietor. Railroad station, Northboro, Vt., within 500 feet. Situated on banks of Connecticut River in

beautiful country. Two popular summer and amusement resorts, Fairlee Pond and Lake Morey, six miles; one and one-half miles to Post Pond. Boating and fishing in Connecticut River and in the ponds and lake named above. A clean, first-class house with modern conveniences. Nice table; meals served at all hours. Special attention given to automobile tourists. Garage. Accommodates 25. Full house last season; guests from New York, Boston, Philadelphia, Chicago, Concord, etc. Terms, \$2 to \$3 per day, \$8, \$10, \$12 per week.

ORANGE.

"PEAKE PLACE." M. S. Hood, Proprietor. P. O. West Topsham, Vt. Railroad station, Barre, Vt. Carriage free to and from depot, also church. Situated high and dry. Nice shade. Beautiful scenery. Never-failing cold springs. Accommodates six or eight. Terms, \$1 per day, \$5 per week. Special rates for family of five or six. Weeks' notice desired.

RANDOLPH.

"RANDOLPH INN." C. W. Hayward, Proprietor. Railroad station, Randolph, two minutes' walk. Fine drives. Good hunting and trout fishing. Accommodates 60. Terms, \$2 per day, \$10 per week.

"EDGEWOOD FARM." E. S. Tewksbury, Proprietor. Railroad station, Randolph. Conveyance, free carriage, three miles. River on farm; many shade trees; large lawn; fine views. Spring water. Accommodates 15. Guests last season, 22, from Boston, Portland, Providence, New York, Georgetown, Mass., etc. Terms, \$1 per day, \$5 to \$7 per week.

PRIVATE HOUSE. Mrs. A. E. Kendrick, Proprietor. Railroad station, Randolph, within ten minutes' walk. Situate on high ground in the pleasant part of the village of Randolph. Modern conveniences, large, shady lawn, broad piazzas and very pleasant surroundings. Pure spring water. Nice park of several acres, with pleasant walks, etc. within five minutes' walk. Accommodates 10. Terms, \$7 to \$10 per week.

"WHITE HOUSE FARM." H. H. Paige, Proprietor. Railroad station, Randolph, one mile. Conveyance, private. Pleasantly located. Trout brook. Light, airy rooms. Modern improvements. Accommodates six. Terms, \$1.50 per day, \$6 to \$10 per week.

RANDOLPH CENTER.

"RANDOLPH HOUSE." W. L. Hebard, Proprietor. Railroad Station, Randolph. Three stages daily, also private conveyance. Altitude, 1,600 feet. Fine drives. Beautiful scenery. Tennis, golf and croquet. Autos cared for. Accommodates 30. Twenty-five guests last season principally from New York and Connecticut. Terms, \$2 per day, \$8 to \$12 per week.

SOUTH FAIRLEE.

"THE FARM." J. N. Kimball, Proprietor. Railroad Station, Ely, Vt. Private conveyance. A large farmhouse pleasantly situated among trees.

Bath room. Trout fishing on farm. Lake fishing, three miles distant. Accommodates ten. Terms, \$6 to \$8 per week.

TOPSHAM.

FARM HOUSE. J. B. LeLam, Proprietor. Railroad station, Bradford or South Ryegate. Conveyance, stage. Situated on a high hill. Fine view of surrounding country. Accommodates ten. Terms, \$1 per day.

WASHINGTON.

"THE WILLOWS." Mrs. Victor W. Curtis, Proprietor. Railroad station, Barre. Private carriage, also auto to meet guests, free of charge. 250 acre farm with market gardens connected. Large verandas on north and west sides of house. Shade trees. An ideal spot for rest. Fresh fruits, spring water. Auto can be hired at village, three-fourths mile distant. Accommodates fifteen. Terms, \$1 per day, \$5 per week. First class references furnished.

WELLS RIVER.

"HALE'S TAVERN." Jerome F. Hale, Proprietor. Railroad station, Wells River and Woodsville, N. H. Conveyance, free 'bus. Garage. Home of the New England Fat Men's Club. Large, well-ventilated rooms; every room an outside one. Modern improvements. Situated at the junction of the Connecticut, Ammonoosuc and Wells Rivers. Home grown vegetables; fish and game in season. Delightful walks and drives. Many places of interest near by. Accommodates 75. 9,000 guests, season, 1910. Terms, \$2.50 to \$3 per day, \$10.50 to \$21 per week. Write for leaflet.

WEST TOPSHAM.

"MAPLE VIEW FARM." Alberta Fellows, Proprietor. Railroad station, Barre and Bradford. Stage daily from Barre, eleven miles; Bradford, fifteen miles, private conveyance. Five minutes' walk to post-office, stores, etc. Pleasant drives, fine trout fishing. Large, light, airy rooms, telephone. Fresh vegetables, fruit, eggs, etc. Pure spring water. Accommodates six. Terms, \$1 per day, \$5 to \$7 per week.

WILLIAMSTOWN.

"WILLIAMSTOWN INN." George O. Marr, Proprietor. Railroad station, Central, within two minutes' walk. Williamstown is a beautiful little village. Postoffice next building to hotel. Three churches, etc. Beautiful scenery and drives, both carriage and automobiles. Pure spring water. Accommodates 25 to 30. Garage. Terms, \$2.50 per day, \$14 per week.

Orleans County

BARTON.

J. A. MCAULEY. "Crystal Lake Hotel," Barton, Vt. only a block from the railroad station. Open all night for trains to Montreal and Boston. Accommodates 50 persons. Terms, \$2 per day; \$12 to \$14 per week. Beautiful, large house with large wide piazzas. Nice lawn and plenty of shade trees. Garage and livery in connection with hotel. The principal attraction is the beautiful Crystal Lake situated in the center of the town with excellent fishing and boating which renders it still more attractive, it being surrounded by the beautiful range of Green Mountains.

WEST CHARLESTON.

F. J. HAMBLET. "Clyde River Hotel," North Charleston, Vt. Railroad station, Newport and Island Pond, Vt. Conveyance, stage. Accommodates thirty persons. Terms \$2 per day or \$14 per week. Large new house, hardwood finish, with electric lights, steam heat, in fact all modern improvements. Also a fine livery. Good fishing, pleasant drives and fine roads for automobiling. Plenty of pure spring water. Scenery unsurpassed for beauty.

NORTH CRAFTSBURY.

A. B. PIKE. "Orleans House," North Craftsbury, Vt. Railroad Station, Hardwick and Wolcott, Vt. Conveyance, stage twice daily or private carriage. Accommodates 25 persons. Terms, \$1.50 to \$2 per day, \$5 to \$10 per week. Pleasant drives, beautiful scenery and fine fishing.

DERBY LINE.

JOHN U. BAXTER. "Derby Line Hotel," Derby Line, Vt. Railroad station, Rock Island and Derby Line, Vt. Conveyance, coach. Accommodates 40 persons. Terms, \$2 per day; \$10 per week. Located on the very crest of the Green Mountain range. There are many ponds and lakes, and all the valleys abound with brooks and rivers that add a rare charm to this unequalled landscape. It is difficult to describe the beautiful drives that this locality affords; every turn in the road traversed presents a new and most delightful picture, as the roadsides are a mass of shrubbery and wild flowers. There is good trout fishing in the streams and lakes, and nature furnishes every needed facility for a real outing and rest. Plenty of fresh eggs and all the wholesome, strength giving food that is best for the out-door liver. Large plain rooms, scrupulously neat and clean. Personal attention given guests.

GREENSBORO.

"CASPIAN LAKE HOUSE." F. H. Dufur, Proprietor. Railroad station, Greensboro. Altitude, 1,500 to 2,000 feet. Surrounded by beautiful lakes

and high mountains. Free from mosquitoes. Many delightful drives. Good fishing, boating and bathing. Caspian Lake is three miles long. Golf links. Has been thoroughly renovated and refitted. Good livery service. Accommodates 40. Guests from all over New England and the cities of New York, Chicago, Boston, and Washington. Terms, \$1.50 to \$2 per day, \$7 to \$10 per week. Write for booklet.

H. A. HARTSON. "Bonnie View Cottage," Greensboro, Vt. Conveyance, stage or private carriage. Accommodates ten persons. Terms, \$7 to \$8 per week. Greensboro lies in the northern part of Vermont, 1,500 to 2,000 feet above the level of the sea, and is one of the most desirable summer resorts. Driving, bathing and golf. Points of interest; Sunset Point, Caspian Lake, which is a beautiful sheet of water from 2 to 3 miles long and is well stocked with trout, which are taken in good number during the open season.

GLOVER.

LILLIAN McQUEEN. "Glover Inn," Glover, Vt. Railroad station, Barton, Vt., two and one-half miles distant. Conveyance, bus three times a day or private team. Accommodates 30 persons. Terms, \$2 per day; \$12 per week. Situated among the mountains, making it one of the most beautiful and healthful resorts in Vermont. Supplied with spring water and has all modern conveniences. One of the best trout streams in the state runs within one hundred feet of the house. There is excellent partridge, fox and rabbit shooting in their seasons. There are beautiful drives and excellent roads for automobiling; special attention given to automobile parties. First class table. Telephone.

NEWPORT.

F. E. HAPGOOD. "Newport House," Newport, Vt. Accommodates 50 persons. Terms, \$2 and \$2.50 per day. Pleasant drives and good boating.

NORTH TROY.

"FRONTIER HOUSE." B. B. Gilbert, Proprietor. Railroad station, North Troy, conveyance, bus. Nice drives. Good mountain scenery. Seven miles to foot of Jay Peak. Ten miles to Owl's Head Mountain and Lake Memphremagog. Accommodates 50. Terms, \$2 per day, \$10 per week.

TROY.

GEO. F. BOYDON. "Missisquoi House." Troy, Vt. Railroad station, North Troy, Vt. Seven miles distant. Conveyance, stage or private carriage. Accommodates 25 persons. Terms, \$2 per day; \$7 per week. Interesting drives. Trout fishing. Splendid roads for automobiling. Garage and livery connected with house. Places of interest are Big Falls, Magnetic Crown Mines, Mineral Springs and asbestos mines.

WESTMORE.

W. F. RICHARDSON. "Willoughby House." Railroad station, West Burke. Conveyance, stage. Situated on shore of Willoughby Lake. Spring water. Table furnished with home grown products of the farm, dairy and garden. Beautiful scenery and drives. Best of brook and lake fishing can be had near by. Boats, guides, teams and a steamer are always available. Accommodates 40. One thousand five hundred guests during season 1910. Terms, \$2 per day, \$10 per week. Write for booklet.

S. M. COLE. "Brookside Inn." Westmore, Vt. Railroad station, Barton or West Burke, Vt. Accommodates twelve persons. Terms, \$1 per day; \$6 per week. Have two houses. One cottage with four sleeping rooms. The large house has a dining room and two guest chambers. Beautiful lake and mountain scenery. Good fishing.

WESTFIELD.

C. C. SMITH. "The Maples," Westfield, Vt. Railroad station, North Troy, Vt. Conveyance, private carriage. Accommodates 15 persons. Terms, \$5 per week. Located among the beautiful hills and mountains of northern Vermont. The house is modern in every way. Bath, hot and cold water, etc. Large piazzas and plenty of shade. Special attention given automobile parties and transient guests.

WILLOUGHBY.

R. H. and F. S. MOORE. "Valley Brook Farm," Willoughby, Vt. Railroad station, Sutton, Vt., two and one-half miles south. Conveyance, private team. Accommodates twelve persons. Terms, \$1 per day; \$5 per week. Willoughby Lake three and one-half miles distant. Little Duck pond two miles, Dollf Pond one-half mile. If seeking rest and quiet, surrounded by beautiful nature, with pleasant walks and drives, you will find this an excellent place.

WILLOUGHBY LAKE.

GEORGE C. MYERS. "Willoughby Farm," Westmore, Vt. Railroad station, West Burke, Barton or Orleans, Vt. Conveyance, private carriage. Accommodates six persons. Terms \$1 per day; \$7 per week. Pleasant summer resort. Situated in beautiful location on shore of lake near groves and cottages. One of the most beautiful lakes in Vermont.

Rutland County

BRANDON.

"BRANDON INN." W. P. Gardiner, Manager. Railroad station, Brandon. Conveyance, 'bus. Vegetables from garden on grounds. Fine spring water. Fine drives, croquet, tennis, fishing and other outdoor sports. Music during summer season. Best of accommodations for automobile parties. Fireproof garage. Accommodates 100. Terms, \$2.50 per day, \$14 and upward per week.

"DOUGLAS HOUSE." Frank Dignan, Proprietor. Railroad station, Brandon. Brandon is one of the prettiest villages in Vermont. Lake Dunmore is within a few miles. Accommodates forty. Forty guests season 1910. Terms, \$1.50 per day, \$9 per week.

"SILVER LAKE HOTEL." Frank Chandler, Proprietor. Railroad station, Brandon, Vt. Conveyance daily stage, or if notified will meet guests. Altitude, 1,300 feet. Beautiful scenery. Spring water. Good bathing and boating. Pleasant walks. Croquet and tennis. Telephone. Daily mail. Accommodates 75 or 80. Terms, \$2 per day; \$7, \$8, \$10 per week.

"WOOD CROFT FARM." Mrs. E. A. Lee, Proprietor. Railroad station, Brandon, Vt. Conveyance, free carriage. Small lake borders on farm. Good boating and fishing. Home grown vegetables. Plenty of Jersey milk, cream, fresh eggs. Large, airy rooms. Porches. Mountain view. An ideal place for rest. Accommodates twelve. Terms, \$1 per day, \$7 per week.

CASTLETON.

"BOMOSEEN HOUSE." Charles C. Hayden, Proprietor. Railroad station, Castleton. Conveyance, hack. Situated in the Green Mountains with an abundance of lake and brook fishing and hunting. Electric cars pass every hour for Lake Bomoseen and Rutland. Terms, \$2 per day, \$7 to \$10 per week.

"CEDAR GROVE HOUSE." Lake Bomoseen. Edward Dunn, Proprietor. Railroad station, Castleton. Conveyance, carriage and electric cars. Modern and complete house. Extensive and well kept grounds. Fresh eggs, vegetables, milk, cream, butter and maple syrup supplied from 200 acre farm in connection. Golf links, tennis courts, base ball and croquet grounds. Excellent fishing. Romantic drives abound. Three cottages in connection. Well equipped livery. Accommodates 125. About 300 guests season 1910. Terms, \$2 and upwards per day, \$10 and upward per week. References on application. Write for booklet.

"LAKE HOUSE," Lake Bomoseen. R. H. Adams, Proprietor. Railroad station, Castleton or Hydeville. Trolley every half hour. Lake Bomoseen is nine miles long, three miles wide, has several large hotels, 200 cottages.

Good fishing, boating, bathing. Dancing pavilion at Bomoseen Park. Tennis, golf links, fine drives. Accommodates 100. Ninety guests season 1910 from New York city, Albany, Cohoes, New Jersey, etc. Terms, \$1.50 to \$2 per day, \$7 to \$10 per week.

"NORMAL PARK PLACE." Mrs. Charles J. Sheltus, Proprietor. Railroad station, Castleton. Conveyance, trolley. Lake Bomoseen, five miles; trolley every half hour. Very pleasant location. Nice lawn. Fresh vegetables from garden. Accommodates 10. Terms, \$1 per day, \$6 per week.

"LAKESIDE," Bomoseen, Vt. Railroad station, Castleton or Hydeville. Conveyance, team or trolley. Nice lake. Near trolley station and Bomoseen Park. Several hotels in the vicinity. Beautiful scenery, nice shade. Good roads. Accommodates 15 to 20. Full house season 1910. Guests from New York, Brooklyn, Troy, etc. Terms, \$1.25 per day, \$7 per week.

"PLEASANT VIEW HOUSE." Castleton Corners. John Whitney, Proprietor. Railroad station, Hydeville. Conveyance free to guests on arrival. Trolley cars pass door. Five minutes' ride to Bomoseen Park. Lake Bomoseen, one mile. Lake St. Catherine, seven miles. Hyde Manor, twelve miles. Fresh vegetables, milk, butter, cream and eggs. Accommodates 15. Full house last season. Terms, \$1 per day.

"THE PROSPECT," on Lake Bomoseen. Horace B. Ellis, Manager. Railroad station, Castleton. Conveyance, carriages. Situated upon a long point extending into Lake Bomoseen, an attractive and picturesque location. Superb view on all sides. Modern and complete hotel with extensive and well kept grounds. Fresh eggs, milk, cream, vegetables, etc. supplied from farm in connection. Tennis, baseball, croquet, etc. Excellent fishing, Grouse and woodcock shooting in season. Twelve cottages. Accommodates 200. 200 guests season 1910. Terms, \$3 to \$5 per day, \$10 to \$25 per week. References on application. Write for booklet.

"EAGLE CREST." Smith Bros., 25 East Washington St., Rutland, Vt., Proprietors. Situated on west side of Lake Bomoseen, three miles from Hydeville. Railroad station, Hydeville or Castleton. Conveyance, trolley or steamer. Equipped with everything necessary for housekeeping including cooking utensils, ice, wood, also boat. Accommodates eight. Terms, \$10 per week. For sale or rent. Special rates for season.

"SEEMORE LODGE." Smith Bros., Rutland, Vt., Proprietors. Railroad station, Hydeville or Castleton. Conveyance, trolley or steamer. Situated on west side of Lake Bomoseen, three miles from Hydeville. Equipped with everything necessary for housekeeping, including ice, wood and cooking utensils, also boat. Fireplace and bath house. Good fishing, bathing and boating. Accommodates 12. Terms, \$15 per week. Special rates for season. For sale or rent.

"COFFEY HOUSE." C. M. Coffey, Proprietor. Railroad station, Castleton. Conveyance, electric cars. House situated in maple grove overlooking Lake Bomoseen. Plenty of shade. First-class fishing, boating, etc. Fine

swimming beach. Nice spring water. Accommodates 20. Fifty guests season 1910. Terms, \$1.50 per day, \$7 per week.

“COLONIAL.” H. C. Ramsey, Proprietor. Railroad station, Castleton. Conveyance, auto or team. Garage. Accommodates 12. Seventy guests season 1910 from New York city, Washington, Boston, Brooklyn, etc. Terms, \$1.50 per day, \$8 to \$10 per week.

“THE MAPLES.” Chas. B. Webster, Proprietor. Railroad station, Castleton, one-eighth mile. Conveyance, trolley or carriage. Within three miles of Lake Bomoseen which affords excellent fishing. Large colonial house with 300 feet piazza. Gas and electric lights. Large maple shade trees. Splendid water. Plenty of fruit and vegetables on farm. Garage. Accommodates 35. Thirty-five guests season 1910. Terms, \$2 per day, \$7 to \$12 per week. This place is for sale.

“GRAND VIEW FARM.” S. Hurlburt, Proprietor, Bomoseen, Vt., Railroad station, Castleton. Conveyance, team or boat. Situated near Lake Bomoseen. Large, shady grounds. Pure water. Plenty fresh eggs, milk, and vegetables from the farm. Fine fishing and boating. Free use of boats. Accommodates 30. Twenty-nine guests last season from New York, Brooklyn etc. Terms, \$1 per day, \$6 per week.

P. L. PRUNIER. “Grand View Hotel,” Lake Bomoseen, Vt. Railroad station, Hydeville, Vt. Conveyance, hack or motor boat. Accommodates 150 persons. Terms, \$2.50 per day or \$10 per week and up. Fishing, boating, bathing, rowing. Lawn tennis, croquet. Driving. Automobiling.

EAST POULTNEY.

“ROCK SPRING FARM.” Mrs. Henry C. Gates, Proprietor. Railroad Station, Poultney, Vt. Conveyance, teams. Places of interest in vicinity, Lake St. Catherine, Lake Bomoseen, Slate Quarries. Mountain scenery. Accommodates 14. Terms, \$1 per day, \$7 per week. Photograph upon request.

FAIR HAVEN.

“HOTEL ALLEN.” David J. Rutledge, Proprietor. Railroad Station, Fair Haven; also trolley. Conveyance, bus. Interesting features about place and vicinity,—Park, drives, band concerts, lakes, Carvers Falls, Inman Pond, slate quarries, library, etc. Garage. Accommodates 100. Hotel pleasantly and conveniently located. Modern equipments. A new brick building of fireproof construction. Terms, \$2 and upward per day, \$14 and upward per week.

PRIVATE HOUSE. Mrs. Jane R. Town, Proprietor. Railroad station, Fair Haven. Hacks meet each train. Centrally located, near park. Wide street. A beautiful lake only a short ride by electric cars. Within five minutes walk of church, P. O., etc. Cool veranda. Can accommodate six. Better suited to adults than children. Terms, \$1 per day, \$6 per week.

DANBY.

"DANBY HOUSE." D. C. Risdon, Proprietor. Railroad station, Danby. Conveyance, carriage. Very pleasant drives. Good fishing in mountain streams. Accommodates 35. Terms, \$2 per day, \$10 per week.

HUBBARDTON.

"ECHO LAKE FARM." Allen L. Mott, Brandon, R. F. D. No. 5, Proprietor. Railroad station, Brandon. Private conveyance. Lakes Echo and Beebee near. Lake Hortonia one mile. Lake Bomoseen and others in vicinity. Well kept lawn. Two cottages. Table supplied with fresh vegetables and fruits in season, milk, butter and maple syrup from the farm. Good fishing. Boats provided for free use of guests. An ideal resort for those in search of rest or pleasure. Accommodates 25. Terms, \$1.25 per day, \$7 per week. References furnished. Write for circular.

HYDEVILLE.

"GRAND VIEW HOTEL." P. L. Prunier, Manager. Railroad station, Hydeville, one mile by stage or boat. A new and up-to-date house, situated immediately on the shore of Lake Bomoseen. Table supplied daily with fresh eggs, milk, cream, butter and vegetables from near by farms. Pure mountain spring water. Excellent fishing. Sandy beach for bathing. Facilities near at hand for all manner of outdoor sports. Accommodations for 150 guests. Terms, \$2.50 per day, \$10 and upward per week. Write for booklet.

"O'BRIEN'S HOTEL" on shore of Lake Bomoseen. D. E. O'Brien, Proprietor. Railroad station, Hydeville, Vt. Free transportation. A new building, a modern summer hotel. Long and broad piazzas. Rooms well-furnished and equipped. Excellent fishing. Deer hunting in season. Excellent facilities for summer sports and open air recreations. Many places of interest within easy reach. Terms, \$2 per day, \$10 to \$14 per week. Accommodates 40. Send for booklet.

MIDDLETOWN SPRINGS.

"VALLEY HOTEL." Faxon Bros., Proprietors. Railroad station, Poultney, Vt. Stage twice daily. Mineral springs and nice park. Beautiful scenery, best of roads. Hot and cold water baths. Good livery in connection. Accommodates 50. Terms, \$1.75 per day, \$7 per week. Garage.

MECHANICSVILLE.

"LAKEVIEW-IN-THE-MOUNTAINS." Mrs. E. E. White, Proprietor. Railroad station, Mount Holly. Conveyance, private, also stage. An ideal winter and summer resort. Altitude, 1,860 feet. Pretty sheet of water near the house. Perfect walks and drives. Good fishing. No mosquitoes. Thirty-six guests last season from Brooklyn, N. Y. East Orange, N. J., etc. Accommodates 15 to 20. Terms, \$2 per day, \$10 to \$12 per week.

PITTSFIELD.

"HOTEL RANNEY." H. G. Ranney, Proprietor. Railroad station, Stockbridge. Stage. Beautiful drives and good fishing. Accommodates 40. Forty guests last season from Bayonne, N. J. and Mt. Vernon, N. Y., etc. Terms, \$1 per day.

N. E. VOSE, "Vose House," Pittsfield, Vt. Railroad station, Stockbridge, Vt. Conveyance, stage. Terms, \$1.50 per day, \$5 per week. Healthy locality. Pleasant drives and fine view of the mountains.

PITTSFORD.

"OTTER CREEK INN." H. R. Leffingwell, Manager. Railroad station, Pittsford. Situated on high ground and commands a view of Otter Creek Valley. Table supplied with fresh vegetables, milk, cream, butter, eggs, chickens, etc. Excellent trout fishing. Fine drives and walks. Pure spring water. Good livery and garage in connection. Accommodates 50. Terms, \$2 per day, \$10 to \$15 per week. Write for leaflet.

POULTNEY.

"LAKE VIEW-IN-THE-PINES." Lake View Hotel Company, I. H. Francisco, President. Railroad station, Poultney, Vt. Situated on the shore of Lake St. Catherine, upon an eminence of 25 feet above the water, amid a company of pine tree sentinels. An up-to-date hotel with modern improvements. Broad verandas and piazzas affording beautiful views. The cuisine is of the highest standard and so maintained. Spring water for drinking purposes. Good fishing, (black bass, lake trout, pickerel, perch and catfish) boating, baseball, tennis, etc. Orchestra for meals and dancing. Modern garage and chauffeurs quarters. Accommodates 175. Many points of interest within easy driving or automobile distance. Hotel stage and messenger meets all through trains. Average summer temperature about 72 degrees. Altitude 750 feet. All milk, vegetables, butter and eggs supplied from hotel farm. Full house last season. Terms, \$3 to \$5 per day, \$15 to \$25 per week; double occupancy \$25 to \$45 weekly. Write for booklet.

MRS. JOHN A. JONES. "Maple Lodge," Poultney, Vt. Railroad station two and one-half miles distant. Conveyance, stage. Accommodates 25 persons. Terms, \$1.50 per day or \$7 to \$9 per week. Large farm of 400 acres, with extended lake shore. House on main road. Mountain near house. Fine trout brook. Beautiful roads for driving and automobiling. Fine lawn and shade trees. Points of interest: Rutland, Lake Bomoseen, Clarendon Springs, Lake George. Excellent table; milk, cream and vegetables from the farm. Best of pure cold spring water. Mails received daily.

"ALBANY INN." Mrs. R. A. Cole, Proprietor. Railroad station, Poultney. Conveyance, team. Within one-half mile from Lake St. Catherine, two and one-half miles of Poultney village. Telephone, R. F. D. Vegetables milk, butter, eggs, produced on farm. Accommodates 10. Ten guests season

1910. Terms, \$1 per day, \$7 per week. Special rates in June and September. Reduced rates by the season.

"HOTEL POULTNEY." David Roberts, Proprietor. Railroad station at Poultney, about three minutes' walk. Pleasant village and surroundings. Within two miles of Lake St. Catherine where there is motoring, boating, fishing, dancing pavilion, cottages to rent. Accommodates 40. Terms, \$2 per day, \$14 per week, excepting regular boarders.

PROCTOR.

"PROCTOR INN." N. B. Ladabouche, Proprietor. Railroad station, Proctor, Vt. Accommodates 40. Marble works and Otter Creek are of interest. Terms, \$2 per day, \$10 per week.

RUTLAND.

"BARDWELL HOTEL." Lalor Bros. Proprietors. Situated opposite station. Open all the year. Steam heat, electric lights. Flemish cafe. Twenty-five new rooms with bath. Garage. Terms, \$2.50 to \$6 per day. Accommodates 200.

"THE BERWICK." W. H. Valiquette, Proprietor. A short walk from station. Accommodates 150. Terms, \$3 and upward per day. Garage.

SUDBURY.

"PINE DALE FARM." S. S. Germond, Proprietor. Railroad station, Brandon, Vt. Free transportation one way. Situated among the Green Hills of Vermont. Affords especially fine attractions in the way of boating, fishing, hunting and driving. Lily Lake, one-fourth mile. Lake Hortonia one and one-half miles. Lake Bomoseen, nine miles. Lake Dunmore, 14 miles. Lake Champlain, 12 miles. Hubbardton Battle Ground, seven miles. Fort Ticonderoga, 16 miles. Accommodates 15. Terms, \$1 per day, \$7 per week.

WALLINGFORD.

"MAPLE GROVE FARM." W. P. Clark, Proprietor. Railroad station, Wallingford. Free conveyance. Grand mountain scenery, charming drives. Bracing air. Boating and fishing. Table supplied with fresh vegetables, eggs and milk from the farm. Garage. Accommodates 30. Terms, \$1.50 per day, \$7 and \$8 per week.

"THE NEW WALLINGFORD." G. H. Barrett, Manager. Railroad station, Wallingford, Vt. Constructed on generous plans, modern in all appointments. Rooms single and en suite, open fireplace, four large and pleasant verandas. Vegetables, milk, cream and butter fresh from the farm. Mountain spring water. Excellent facilities for boating on Otter Creek and Elfin Lake, both within short distance. Good fishing in the numerous lakes and ponds in the vicinity. Many charming drives and walks in the vicinity. Free library but a few steps from hotel. Good livery. Terms, \$2 per day \$7 to \$14 per week. Accommodates 60. Write for booklet.

Washington County

BARRE CITY.

"HOTEL OTIS." O. H. Hale, Proprietor. Central Vermont & Wells River R. R. station within a short walk. Electric railroad. Barre is an up-to-date business city. Granite industry. Burns Monument, Goddard Seminary, Opera House, etc. Two garages near by. Accommodates 50. Terms, \$2 per day, \$10.50 per week.

BARRE TOWN.

PRIVATE HOUSE. Mrs. J. J. Sowles, Proprietor. Railroad station, Barre. Conveyance, team. Depot, one and one-half miles. Electric road, one-half mile. Situated on Beckley Hill, facing south overlooking nearly all the city of Barre. Large, shady lawn. Wide porch on two sides of house. Accommodates six. Terms, \$1 per day, \$7 per week.

BERLIN.

"STEWART'S CAMP," Mirror Lake. C. H. Stewart, Proprietor. Railroad station, Montpelier, five miles. Conveyance, carriage. Fine view of lake and mountains, plenty of shade, piazza. Pleasant drives to Montpelier, Barre, Northfield, Randolph and Williamstown. Good fishing, boating. Boat livery in connection. Accommodates 10. Twenty boarders and many campers season, 1910. Terms, \$1 per day, \$7 per week. Seven cottages, situated in a grove a few rods from the house, suitable for housekeeping. Price \$7 and \$8 per week. Table board at house if desired. Table board for campers, \$5 per week.

CALAIS.

"CAMP COMFORT." R. Dean Van Orman, Proprietor. Railroad station, Montpelier. Daily stage leaves Montpelier at 5 P. M. Healthful climate, beautiful scenery. Spring water. Dancing pavilion, nice boats, naphtha launch. Accommodates 20. 2,000 guests season 1910 from New York city, Lebanon, N. H., Providence, R. I., Burlington, Barre and Montpelier, Vt. Terms, \$1 to \$2 per day.

MARSHFIELD.

"MARSHFIELD HOUSE." W. E. Lambertson, Proprietor. Railroad station, Marshfield. Conveyance, hack. On main line for automobiles from Burlington to White Mountains. Beautiful scenery. Hunting and fishing in season. Accommodates six. Terms, \$2 per day, \$7 to \$10 per week.

MIDDLESEX.

PRIVATE HOUSE. N. Stockwell, Proprietor. Railroad station, Middlesex. Conveyance, team. Situated on bank Winooski River. Quiet and

pleasant. Good house with electric lights. Place to run in auto. On direct road from Montpelier to Burlington. Married couples preferred. Accommodates 6. Terms, \$1.25 per day, \$8 per week.

MONTPELIER.

"PAVILION HOTEL." T. J. Heaphy, Proprietor. One minutes' walk from depot. Hotel overlooks Capital Park on which are the State buildings, and commands the most beautiful portion of the city. Garage. Accommodates 300. Terms, \$2.50 to \$4 per day, \$14 to \$21 per week.

MORETOWN.

L. A. ARMSTRONG. Railroad station, Middlesex. Conveyance, stage. Farm is situated in Mad River Valley, ten and three-fourths miles from Montpelier. Garage. Accommodates two. Terms, \$1.25 per day, \$7 per week.

"RIVER VIEW FARM." Mrs. W. T. Sawyer, Proprietor. Railroad station, Middlesex. Stage or private conveyance. Mad River runs through the farm. Shade trees on two sides of house. Large porch. Fine view of the Green Mountains. Lovely drives and nice walks. Good hunting near by. Plenty of milk, cream and vegetables. Accommodates eight. Some of last season's guests were from New Durham, N. J., and New York City. Terms, \$1 per day, \$6 per week. \$5 per week to guests staying five or six weeks.

NORTHFIELD.

MRS. O. H. HUMPHREY. Railroad station, Northfield. Public hack or private conveyance. One mile from town and railroad station. Near Norwich University. Shade trees. Pleasant walks. Good livery at reasonable rates. Small trout brook. Accommodates four. Terms, \$1 per day, \$6 per week.

"NORTHFIELD HOUSE." F. A. Sanderson, Proprietor. Railroad station Northfield. Garage. Terms, \$2.25 per day.

PLAINFIELD.

"PLAINFIELD HOUSE." C. M. Hawes, Proprietor. Railroad station, Plainfield. Free carriage to all trains. Good scenery, nice drives. Nice trout fishing in ponds and brooks. Special attention given to automobile parties at reasonable rates. Good livery. Two verandas, 80 feet long. Terms, \$2 per day, \$10 per week. Accommodates 30. One thousand four hundred guests season 1910, from Boston, New York City, Burlington, Vt. etc.

ROXBURY.

MISS C. A. CLEVELAND, "Stanix Hall," Roxbury, Vt. Private conveyance. Accommodates 30 persons. Terms, \$1.50 per day, \$5 to \$6 per week. On the summit of the Green Mountain Hills. Climate delightful. Good table. Nice grove and pleasant drives.

WAITSFIELD.

"WAITSFIELD HOUSE." C. D. Gibbs, Proprietor. Railroad station, Middlesex and Waterbury. Conveyance, stage and auto. Situated in a quiet, clean, delightful country village. One of the best farming sections of Vermont. Modern heating and plumbing. Home cooking. Pure spring water. Fresh butter, eggs and milk. Fresh vegetables from garden in season. Hunting, fishing and mountain climbing. Accommodates 20. Terms, \$2 per day, \$8 to \$12 per week.

WATERBURY.

"GREEN MOUNTAIN HOUSE." W. H. Goodwin, Proprietor. Railroad station, only two minutes' walk. Hot and cold water, bath, etc. Pure spring water. Garage. Accommodates 40. Terms, \$1.50 per day, \$9 per week.

"WATERBURY INN." William F. Davis, Proprietor. Railroad station, Waterbury, a short walk. Six miles to Camel's Hump, good driving. Twenty miles to Mansfield; excellent carriage road. Garage. Accommodates 100. Terms, \$3.50 per day, \$17.50 per week.

WATERBURY CENTER.

"VALLEY VIEW FARM." M. E. Hill, Proprietor. Railroad station, Waterbury. Within one mile of electric road, Waterbury Center. Conveyance from steam railroad station, team. House situated on a hill and commands a view of Camel's Hump, Mount Mansfield and Mount Hunger, the latter being only three miles to the top from the house. Plenty of fresh eggs, milk and butter. Accommodates six. Terms, \$1 per day, \$6 per week. Would prefer family.

WOODBURY.

"HOTEL WOODBURY." J. Lepp, Proprietor. Railroad station, Hardwick. Conveyance, stage and livery. Nice views and drives. Porch. Healthy place. Plenty of fishing. Accommodates 40. Three thousand transients during season 1910. Terms, \$1.50 per day, \$4.50 to \$7. per week.

Windham County

BRATTLEBORO.

FAYETTE MILLER. "McVeigh Farm," Brattleboro, Vt. Conveyance, team. Accommodates eight persons. Terms, \$8 and \$10 per week. Only one mile from trolley line in the pleasant town of Brattleboro. House has pleasant rooms and large piazza. High elevation, beautiful scenery. Pleasant drives. Telephone. Daily mail.

MRS. L. J. STRONG. "The Melrose," Brattleboro, Vt. Conveyance, carriage or electric cars. Accommodates 25 persons. Two dollars per day; \$8 to \$10 per week. A beautiful town on the Connecticut. Good boating since the construction of the Vernon-Hinsdale Dam.

MISS JENNIE E. BUSHEE. "Brattleboro House," Brattleboro, Vt. Conveyance, carriage or automobile. Terms, \$2 per day. Mountain climbing. Automobiling. Boating. Beautiful walks. First class table board and good service.

MAJ. F. W. CHILDS. "Hillcrest," Brattleboro, Vt. Conveyance, private carriage. Accommodates twenty persons. Terms, \$12 per week. Private farm home 2,000 feet above sea. Modern accommodations. Beautiful views. A sweep of the mountains and valleys of New England. Fine water. Charming environments. Three rustic cottages for private accommodation. Fresh vegetables from the farm and milk from fine dairy. Garage. This is one of the most sightly and desirable locations in all New England. Seven miles from Brattleboro and only five miles from electric road. The view is unsurpassed. The farm buildings have been converted into attractive quarters, with amusement hall, etc., all this with excellent table makes Hillcrest ideal.

F. A. PHELPS. "Locust Hill Farm," Brattleboro, Vt. Conveyance, private. Accommodates eight persons. Terms, \$1 to \$1.50 per day; \$7 to \$10 per week. Highland overlooking the Connecticut River Valley and Wanstiquet Mountains across the river in New Hampshire. Dummer Lake only three-fourths mile distant. Public garage. Modern house. Rooms, large, light and airy. Seventy-two feet piazzas. Fresh vegetables, fruit, milk and cream from the farm.

EAST DOVER.

MRS. HENRY S. POWERS. East Dover, Vt. Railroad station, Williamsville, Vt., six miles distant. Conveyance, stage four times daily. Accommodates six persons. Terms, \$5 and \$6 per week. Circulating library. Pleasantly located. Large lawn. Excellent spring water. Good table. Plenty of milk, cream, eggs, and vegetables from garden.

WEST DOVER.

N. D. ALEXANDER. "Green Mountain Inn," Wilmington, Vt. Conveyance, stage for six miles. Accommodates 25 persons. Terms, \$1.50 per day; \$9 per week. Points of interest; Haystack Mountain, Lake Raponda, Chalkstone Spring and Old Iron Mines. Wide piazza. Large lawn and shade.

DUMMERSTON CENTER.

FRANK GOODRO. "Galey Farm," Dummerston Center, Vt. Railroad station, Dummerston, three miles distant. Conveyance, private team. Terms, \$1 per day; \$7 per week. High and dry climate. Good fishing and hunting in season. Large shady lawn. Plenty of fresh milk, eggs, cream, fruit, berries and vegetables.

NORTH DUMMERSTON.

C. G. WILSON. "Valley View Farm," North Dummerston, Vt. Only one mile from railroad station. Conveyance, team. Accommodates eight persons. Terms, \$1.25 per day; \$7 per week. Boating, fishing and hunting. Plenty of vegetables and fruit in season.

GRAFTON.

W. E. L. WALKER. "The Tavern," Grafton, Vt. Railroad station, Bellows Falls and Chester, Vt. Conveyance, stage or automobile. Accommodates 50 persons. Terms, \$2 per day. Eight to \$12 per week. Fine mountain scenery. Good roads for carriage drives and automobiling. Garage in connection with house. Excellent trout fishing. Large cool rooms. Shade trees, verandas and beautiful lawn.

HALIFAX.

E. H. NILES, P. O. Valley, Vt. "Old Homestead," Halifax, Vt. Railroad station, Colerain, Mass. Conveyance, Stage twice daily. Accommodates fourteen persons. Terms, reasonable. Quiet place and plenty of shade.

JAMAICA.

W. B. CLARK. "Jamaica House," Jamaica, Vt. Conveyance, team. Accommodates 50 persons. Terms, \$2 per day; \$10 to \$14 per week. Cool and elegant drives and walks. Beautiful scenery. Nice shady lawn.

EAST JAMAICA.

GEO. M. DOANE. "Maplehurst," East Jamaica, Vt. Railroad station, Wardsboro, Vt. Cottage house to let for season, furnished. Running water, wood and garden. Two and one-half miles from railroad station. Trout brook near house. Situated among the mountains. Beautiful scenery. House contains six rooms—three sleeping rooms.

GEO. M. DOANE. "The Wildwood Farm." East Jamaica, Vt. Railroad station, Wardsboro, Vt. Conveyance, private carriage. Accommodates 10 persons. Terms, \$5 per week. High elevation. Beautiful scenery. Shady lawn. Hammocks and piazzas. Trout brook runs through farm. Telephone. Free conveyance.

LONDONDERRY.

J. E. CARLETON. "Carleton House," Londonderry, Vt. Railroad station, South Londonderry, Vt. Conveyance, private carriage. Accommodates 40 persons. Terms, \$2 per day; \$7 and \$8 per week. High elevation. Near the Green Mountains with fine views and nice drives. Only two and one-half miles from Lowell Lake, a beautiful sheet of water well equipped for boating and fishing. Garage and machine shop for repairing automobiles. On the direct ideal route for automobiles from New York to the White Mountains.

W. S. SHEPARDSON. "Crystal Lake Farm," Londonderry, Vt. Railroad station, Winhall, Vt., two minutes' walk from station. Accommodates 20 persons. Terms, \$1.50 per day, \$7 to \$10 per week. Pure spring water. Fresh vegetables, milk, cream, eggs, etc., products of the farm. A nice broad piazza on three sides of the house. Automobile storage. Pleasant drives, good hunting grounds and fishing near by.

SOUTH LONDONDERRY.

DELBERT A. BOYNTON. "Riverside Inn," South Londonderry, Vt., three minutes' walk from station. Accommodates 30 persons. Terms, \$2 per day, \$10 per week. Situated in a narrow valley on the bank of West River, surrounded by Green Mountains. Number of trout streams. Pickerel, perch and bass fishing close at hand. House newly painted and furnished. Bath. Good table. Vegetables in plenty from our own garden. Livery connected with house.

W. L. HUNT. "Hunt's Tavern," South Londonderry, Vt. Only a few rods from the station. Accommodates 30 persons. Terms, \$2 per day, \$10 and \$12 per week. Nice drives, good air and beautiful scenery. Spring water. Good fishing. Hot and cold baths. Electric lights. All modern conveniences.

H. A. BABBITT. "Fairmount," South Londonderry, Vt. Conveyance, private carriage. Accommodates 25 persons. Terms, \$2 per day, \$7 to \$10 per week. Pleasantly located on the west side of Glebe Mountain, two miles from South Londonderry. High elevation. Pure spring water. Telephone. Mail delivered daily. Modern conveniences. Large piazzas. There is no more extensive and beautiful scenery to be found in the State than at Fairmount. Fourteen towns and three counties can be seen on a clear day. Bungalows, Special rates.

NEWFANE.

J. E. SMILEY. "Newfane Inn," Newfane, Vt. Two minutes' walk from the station. Accommodates 40 persons. Terms, \$2 per day, \$10 to \$12 per

week. Good concrete walk to post-office, store, hotel and depot. Brook and fishing nearby. About two miles from Newfane Hill, a beautiful picnic ground.

MORTON P. BENSON. "Windham County House," Newfane, Vt. Only a few rods from station. Accommodates 30 persons. Terms, \$2 per day, \$10 per week. Pleasant drives, good fishing and hunting. Fine scenery. Large lawn and shade trees.

O. R. WRIGHT. "Riverview Farm," Newfane, Vt. Conveyance carriage. Accommodates 20 persons. Terms, \$7 to \$10 per week. House is situated on side of hill overlooking West River and valley. Putney Mountain directly opposite. Fine location. Newly equipped with bath and sanitary plumbing. Good table. Fresh eggs, milk, cream, vegetables and fruits from farm to table. R. F. D. mail. Long distance telephone.

BELLOWS FALLS.

L. G. HOWARD SONS CO. F. C. WILLIS, MANAGER, "Hotel Windham," Bellows Falls, Vt. Conveyance electric cars, just a short distance. Accommodates 125 persons. Terms, \$2.50 and up per day, \$17.50 and up per week. Boating on the Connecticut River. Pretty walks and drives.

SAXTON'S RIVER.

A. TURCOTT. "Hotel Kimball," Saxton's River, Vt. Railroad station, Bellows Falls, Vt. Conveyance, electric cars. Accommodates 40 persons. Terms, \$2 and up per day, \$9 and up per week. Situated only five miles from Bellows Falls. Electric cars. Excellent driving and motoring roads. In the country, close to nature, surrounded by the beautiful hills for which Vermont is famous. The house is almost entirely encircled with upper and lower verandas, which are furnished with comfortable rockers, settees, etc. Delightful drives and charming walks. Heaton Hill, Warner Hill, Jones Mountain, and Crystal Rock are favorite spots from which to view the surrounding country. Within a mile from the hotel is Barber Park, with handsome summer theatre, open from June 1st to September 1st, which provides first-class entertainment. The natural features of the park also singularly attractive. A croquet ground and lawn tennis court are maintained for guests on the hotel grounds.

TOWNSHEND.

L. J. STRONG. "Townshend Inn," Townshend, Vt. Conveyance, carriage. Accommodates 25 persons. Terms, \$2 per day, \$8 to \$10 per week. Splendid scenery. Quiet, homelike. Small country village in the Vermont hills in West River Valley.

WEST TOWNSHEND.

CHARLES JONES. "Maple Hill Farm," West Townshend, Vt. Conveyance, private. Accommodates, 15 to 25 persons. Terms, \$1 to \$1.50 per day;

\$7 to \$8 per week. Beautifully situated in the Green Mountains of southern Vermont, a region where visions of beauty delight the eye in every direction. The table is supplied with fresh vegetables, milk and eggs from the farm, and the drinking water is pure and abundant at all times. No extreme summer heat is ever felt; the days are clear and invigorating, and the nights are unusually cool. One delivery of mail each day. Both local and long distance telephone connections. Magnificent views of the mountains, with their ever changing lights and shadows are obtained from the piazzas. A short distance from the house is "Old Jordan," to whose summit visitors drive or walk to enjoy the gorgeous sunsets, a feature of the locality. Drives along good state roads as well as over the back mountain roads bring the visitors to charming little towns and villages in the various valleys. There are also points of interest within driving distance, such as Hamilton Falls, Lowell Lake and others. A new tennis court is also a pleasant feature of the place.

WARDSBORO.

HARRY E. HOWARD. "Mt. View Cottage," Wardsboro, Vt. Railroad station, Wardsboro Depot. Conveyance, stage or private carriage. Accommodates 10 persons. Terms, \$1 per day, \$7 per week. Special rates to parties for the season. Pleasant drives and fine mountain views. Special attention paid to the diet of convalescents.

MRS. A. S. NEWCOMB. "Green Mountain View Farm," Wardsboro, Vt. Conveyance, stage or private team. Accommodates ten persons. Terms, \$5 to \$7 per week. Fine views. Nice shade trees. Best of spring water. Milk, cream and eggs. Vegetables and berries in season. Splendid drives and some good fishing.

SOUTH WARDSBORO.

GEORGE H. ALLEN. "Maplehurst Farm," South Wardsboro, Vt. Railroad station, Wardsboro, Vt. Conveyance, stage. Accommodates four persons. Terms, \$1 per day; \$6 per week. Mountain scenery. Lovely walks and drives. An ideal place for a quiet summer outing.

WESTMINSTER.

W. V. FARR. Westminster, Vt. About one mile from the station, overlooking the Connecticut River and many summer residences across the river. It is an historic town where stood the old court house where William French was shot and the first blood of the Revolution was spilled. It is near the site of the old Tory Tavern and not far from the site of the old fort at Walpole. There are many pretty drives in the vicinity. Good pure water. On the main line from New York to the White Mountains and from Boston to Montreal. Only 110 miles from Boston and only 80 miles from Springfield, Mass.

WHITINGHAM.

MRS. F. E. KENT. "Sadawga Springs Hotel," Whitingham, Vt. Railroad station, Whitingham. Conveyance, stage. Accommodates 50 persons. Terms, \$2 per day; \$7 to \$10 per week. Beautiful drives and scenery. Pleasant rooms and broad piazza. Pure spring water. Good fishing and boating.

JACKSONVILLE.

N. E. ADAMS. "Glen House," Jacksonville, Vt. Railroad station, Whitingham, Vt. Conveyance, stage and hotel team. Accommodates 20 persons. Terms, \$2 per day; \$6 to \$10 per week. Beautiful scenery. Nice drives and walks. Boating and fishing. Near store and post office. Telephone.

WILMINGTON.

F. S. CRAFTS. "The Childs Tavern," Wilmington, Vt. Railroad station, Hoosac Tunnel and Wilmington, from east end of Hoosac Tunnel. Conveyance, railroad besides stage from Brattleboro, Vt. Accommodates 50 persons. Terms, \$2 per day; \$12 and up per week. High and dry atmosphere, attractive hotel. Popular summer resort. Many attractive drives and beautiful mountain scenery. Garage. A fine Memorial hall for amusement.

VERNON.

J. O. FROST. Central Park, Vernon, Vt. Less than 30 rods from railroad station. The park has large driving room. Croquet grounds, swings and swing chairs. Everything for comfort and pleasure. Fine grove close to the pavilion. Large shade trees. Nice place for picnics and dances.

WHITINGHAM.

C. E. PUTNAM. "Sadawga Lake House," Whitingham, Vt. Conveyance, stage. Accommodates 40 persons. Terms, \$2 per day; \$8 to \$15 per week. Is located in one of the most picturesque towns in the Green Mountain State, and offers to summer boarders a homelike place with plenty of pure air, fresh milk, eggs and vegetables. Modern conveniences. Good boating, fishing and hunting. A fine mineral spring is located near. There are many pleasant walks and drives. Also two cottages, partly furnished, for parties who desire to rent for the whole, or part of the season, a summer home.

Windsor County

BARNARD.

C. E. CADY. "Silver Lake House," Barnard, Vt. Stage from Bethel, eight miles distant. Teams will meet parties at station if notified. Terms, \$10 to \$12 per week. Children \$7 per week. Located in the heart of the Green Hills of Vermont. The house has first class accommodations for 50 people the year round. All modern improvements, baths and fireplaces on every floor. Affords splendid views, attractive drives over well-made roads and shady highways; boating, bathing, hunting and fishing, golf and tennis. Tents and bathing suits supplied and a good livery is connected with the house. The table has the best on the market. Vegetables, butter, milk, cream, fruit and flowers supplied from the farm. Barnard is an old historic town, famed for the good health of its people. The quiet and pretty village lies by the shore of Silver Lake, which was born in the crater of a volcano and is fed by springs from the surrounding hills.

MRS. CORNELIUS REGAN. "Mt. Pleasant Farm," Barnard, Vt. Railroad Station, Bethel, Vt. Eight miles distant. Conveyance, livery team or automobile. Accommodates ten persons. Terms, \$1 per day. Beautiful mountain scenery. Fine drives. Lake and boating. Spring water. Barnard village, one and one-half miles distant. R. F. D. mail delivery, one a day. First class board. Farm produce fresh and in season. High elevation. Good roads for automobiling.

W. E. ADAMS. "Highland View Farm," Barnard, Vt. R. F. D. No. 3. Railroad station, Bethel, Vt. Conveyance, private carriage. Accommodates eight to ten persons. Terms, \$6 per week. Plenty of shade. Swing hammocks. Fishing in season. Pure water. Fresh vegetables, milk, butter and chickens off the farm. Pleasant drives. Large lawn. Broad piazzas.

EAST BARNARD.

MRS. N. M. LEAVITT. "Eureka Farm," East Barnard, Vt. Railroad station, S. Royalton, Vt. Conveyance, private. Accommodates twelve persons. Elegant new house among the hills. Beautiful view. Spring water. Fruit and produce fresh from the farm. Altitude 1,200 feet. Three-fourths mile to church and store.

CHESTER.

WILLARD A. SENNA. "Hotel Fullerton," Chester, Vt. Three-fourths mile distant. Conveyance, free hotel carriage. Accommodates 100 persons. Terms, \$2.50 to \$4 per day; \$12.50 to \$21 per week. Rooms have running water. En-suite with or without private bath attached. Superb trips by carriage or automobile. Diversity of routes and side trips is a marked feature of this most central point; midway between Manchester, Vt., and Lake Sunapee, N. H. Garage.

THE MISSES SARGENT. "The Maples," Chester, Vt. Three-fourths mile from station. Terms, \$7 to \$10 per week, according to location of rooms which are all bright and cheerful. Desirable location, large, airy rooms, shady piazza, croquet ground. Concrete walks to post office and churches. Ten minutes' walk to forests in any direction. Scenery and drives cannot be surpassed in New England. Good roads, invigorating air, delightful walks, pure water. No hay fever, malaria nor mosquitoes. Excellent table, good service. All modern conveniences.

J. B. MOORE, Chester, Vt. Conveyance, first class. Fresh fruits and vegetables in season. Plenty of good cream and milk. Fifteen minutes' walk to churches and post office. Accommodates six persons. Terms, \$2 per day, and \$10 per week.

GAYSVILLE.

MRS. EUGENE CHAMBERLIN, Gaysville, Vt. Conveyance, team. Accommodates six persons. Terms, reasonable. About one-fourth mile from village, station, churches and postoffice. R. F. D. once a day. Fine scenery. River nearby.

HARTFORD.

W. E. COLEMAN. "White River Tavern," Hartford, Vt. Railroad station, White River Junction, Vt. Conveyance, auto 'bus. Accommodates 75 persons. Terms, \$2.50 to \$3.50 per day; \$12 to \$18 per week. Is situated in the Mascoma Valley, an upland valley having an altitude of 100 feet, hemmed in by sheltering hills of the picturesque Green Mountains. By reason of its altitude the days are sparkling with sunshiny crispness; the nights deliciously cool and the breezes are tonic and exhilarating to a degree. Abundant fishing. Delightful rambles along shady highways and beautiful drives and automobile spins may be indulged in upon smooth, well kept roads which cannot be surpassed for their scenic beauty. Fine livery in connection with the house, and the Miller Automobile Co., a modern, up-to-date garage, will take care of automobiles.

WEST HARTFORD.

C. P. THACHER. "North Cotte Cottage," West Hartford, Vt. Private conveyance. Seven room cottage, partly furnished. Barn and carriage accommodations. Fine location. Pleasant drives.

HARTLAND FOUR CORNERS.

MRS. NELLIE J. FLOWER, Hartland Four Corners, Vt. Railroad station, Hartland, Vt. Conveyance, stage. Accommodates 10 persons. Terms, \$6 per week. Small, quiet village. Church and post office near. Pretty views. Pleasant walks, drives and good trout fishing. An ideal place to rest.

MRS ROY KENDALL, Hartland Four Corners, Vt. Railroad station, Hartland, Vt. Stage or private conveyance. Accommodates ten persons. Terms \$7 per week. High elevation. Shady. Fine view. Plenty of cream, milk and berries. Telephone. Near church and postoffice. An ideal place for rest and comfort. Spacious lawn and nice porch. Beautiful shady drives and picturesque scenery.

LUDLOW.

G. H. RAYMOND. "Ludlow House," Ludlow, Vt., about one-fourth mile from station. Conveyance, 'bus. Accommodates forty persons. Terms, \$2.50 per day; \$10.50 to \$15 per week. Fine drives. Mountain scenery. Two lovely lakes near by. Large lawn and shade trees. Fine broad piazzas.

MRS. ELLA H. WILDER. "Lake Rescue House," Ludlow, Vt. Railroad station three miles distant. Conveyance, automobile, carriage or stage. Accommodates twenty persons. Terms, \$1 per day; \$6 per week. Lovely lake within a few rods of the house. Thirty-five cottages on the shores. Pleasure boats and good fishing. Mail delivered once a day by stage.

WILLIAM D. BOYD. "Riverside Farm," Ludlow, Vt. Free conveyance to and from station. Terms, \$1 per day; \$7 per week. A river runs through the farm. Boating and bathing. About 1200 feet above sea level. Lake Rescue is two miles distant; Lake Echo four miles. Telephone. R. F. D. mail delivery.

H. B. McNEIL. "Mountain View Farm House," Ludlow, Vt. Conveyance, private team. Accommodates twelve persons. Terms, \$1 per day; \$6 and \$7 per week. Fine location. Beautiful walks and drives. Surrounded by several lakes and Black River is near by. Cool and quiet. Boats on both lake and river free to all guests.

NORWICH.

W. S. BOWLES. "The Newton Inn," Norwich, Vt. Railroad station, Norwich and Hanover. Conveyance, Private carriage. Accommodates thirty persons. Terms, \$2 to \$2.50 per day, with bath \$3.00; \$8 to \$20 per week. Open the year around. It is homelike, handsomely furnished, heated by an approved system of hot water and open fireplaces, perfect sanitary arrangements, hot and cold water in baths. Rooms can be single or en-suite. There is in connection with the house a good livery, where can be found at all times firstclass rigs with modern carriages and competent drivers; also thoroughly trained saddle horse for ladies' and gentlemen's use. Also good garage accommodations and special attention to automobile parties. The drives in and around Norwich are unsurpassed in New England. The White and Green Mountains are plainly seen from many of the hilltops; the near views of the river and valley are beautiful and ever changing. The air is dry and health giving. The Connecticut River, one-half mile from the Inn, affords boating

for thirty miles. Some fine boats including a firstclass steam launch for large parties are kept for rent by the hour or day, and are owned and managed by a competent boatman. The house is supplied with pure spring water. The milk, eggs and vegetables are raised on the premises, and come fresh to the table. Broad piazzas extend along two sides of the house, affording a cool retreat during the summer afternoons. Every effort will be made to please guests, and terms will be as low as consistent with good accommodations. •

SHERMAN O. SOMERVILLE. "Spruce Tree Farm," Norwich, Vt. Railroad station, Norwich, and Hanover, N. H. Conveyance, private team. Accommodates twelve persons. Terms, \$1 per day; \$6 per week. Excellent roads. On direct road to Strafford, Chelsea, Barre and Montpelier. Garage and livery in connection with house. An ideal quiet home farm. Plenty of sunshine, and home-cooked nourishing food.

POMFRET.

FREDERICK A. HENRY. "Hilltop Farm," Pomfret, Vt. Railroad station, West Hartford, Vt. Conveyance, stage and private carriage. Accommodates ten persons. Terms, \$1 per day; \$5 per week. Good board. Plenty of eggs, cream and home-made butter. Scenery is unsurpassed in New England. Garage. Pure air and water.

MRS. C. W. CLEVELAND. "Sunnyside Farm," Pomfret, Vt. Railroad station, West Hartford, Vt. Conveyance, stage or private carriage. Accommodates ten persons. Terms, \$1 per day; \$5 to \$7 per week. Elevation about 1500 feet. Lovely walks and drives. Silver Lake and other points of interest only five miles distant. Fresh berries, vegetables, cream, milk and eggs from the farm. House is within twenty rods from the postoffice where mail is delivered twice daily. Telephone. Groves near by. Plenty of sunshine or shade as you desire.

ROCHESTER.

MRS. MARY F. NEWTON, "Maplehurst Farm," Rochester, Vt. Railroad station one and one-fourth mile distant. Conveyance, private. Accommodates seven persons. Terms, \$1 per day, \$6 or \$7 per week. Piazza and shade trees. Good mountain view. Woods near by. Bracing air. Nice walks and drives. Large airy sleeping rooms. Good farm board.

WEBSTER THRASHER & Co., "Rochester House," Rochester, Vt. Conveyance, free 'bus. Accommodates 40 persons. Terms, \$2 per day, \$10 to \$14 per week. Beautiful views, walks and drives. State highway runs past the house. Pure spring water. Good fishing in brooks. Plenty of milk, eggs and vegetables.

N. C. & C. E. HARVEY, "Mt. View Farm," Rochester, Vt. Railroad station only two and one-half miles distant. Conveyance, free private carriage. Accommodates 10 to 12 persons. Terms, \$1.25 per day, \$6 to \$7 per week. Special rates to parties. Fine mountain scenery. Modern house with good

clean surroundings. Bath with hot and cold water. Large piazza. Beautiful walks and drives. Good table. Abundance of cream, eggs and milk. Vegetables, fowls and pure maple sugar from the farm. House open from June 1st until October 1st. Churches only two and one-half miles distant.

ROYALTON.

A. E. EMERY. "Cascadnac House," Royalton, Vt. Just a short walk from the station. Accommodates forty persons. Terms, \$2 per day; \$7 to \$10 per week. Quiet and restful. Fine fishing and hunting. Special attention to automobile parties. Garage, one mile distant.

JOEL N. PHELP. Royalton, Vt. Only 15 rods from railroad station. Short walk from the main street, postoffice and churches. The house consists of 14 large, airy rooms. Heated with furnace. All modern improvements. Large piazza from which a grand view of the mountains can be had. Nice shade trees and lawn. Many historical points of interest surround this beautiful spot.

SOUTH ROYALTON.

FRED J. SHEPARD. "Mill Brook Farm," South Royalton, Vt. Conveyance, carriage. Accommodates 12 persons. Terms, \$1.25 or \$1.50 per day. House well shaded. Broad piazza. Best of table service. Milk, cream and vegetables fresh from the farm. Modern conveniences. Garage one-half mile distant from the house. Beautiful lake and mountain views.

MRS. JOHN A. SHERLOCK. "Island View Farm," South Royalton, Vt. Conveyance, team. Accommodates four persons. Terms, \$1 per day, \$6 per week. Good scenery, water and air. Only one mile from South Royalton village, on river road at junction of three roads. Good fishing and hunting and general sports for summer pleasure.

MRS. CLARA E. ALEXANDER. "Pinehurst Farm," South Royalton, Vt. Conveyance, stage. Accommodates eight persons. Terms, \$1 per day, \$7 per week. Situated on the banks of the White River. Large pine woods on farm. Boating, fishing and hunting. An ideal place for campers. Mail delivered twice daily. Fresh eggs, milk, cream and vegetables from farm.

MRS. CHAS. L. WOODBURY. "Southern View Farm House," South Royalton, Vt. Conveyance, teams. Accommodates six persons. Terms, \$1 per day, \$7 per week. Points of interest, Mormon Cottage and Joseph Smith monument. Fine views. Pretty drives. Pine grove near White River. One mile from village on the state road. Have R. F. D. mail delivery. Telephone.

GEORGE D. HARRINGTON. "South Royalton House," South Royalton, Vt. Only eight rods from the station. Accommodates 35 persons. Terms \$2 per day, \$7 to \$10 per week. Fine roads for automobiling and driving. Livery attached. Garage in the village. Good fishing.

SHARON.

MRS. E. L. WEBSTER, Sharon, Vt. R. F. D. Conveyance, private team. Accommodates four to six persons. Terms, \$4.50 to \$7 per week. Good view of both White and Green Mountains. Pleasant, quiet and cool. Flowers and shade trees. Both well and spring water. Good home-cooked food, fresh milk and eggs. Plenty of nice garden berries, apples and vegetables in the season. Large porch and fine lawn.

A. A. LOVEJOY, Sharon, Vt. R. F. D. No. 15. Conveyance, private carriage. Accommodates six persons. Terms, \$1 per day, \$5 per week. Historical caves, waterfalls and beautiful scenery. All the pleasures of country life on a farm.

G. B. DROWN. "Sharon House," Sharon, Vt. Conveyance, team to all trains. Accommodates 20 persons. Terms, \$2 per day, \$10 per week. Fine scenery. Good boating, fishing and hunting.

TYSON.

R. A. A. CHASE. "Echo Lake Hotel," Tyson, Vt. Railroad station, Ludlow, Vt. Conveyance, stage or livery. Accommodates 100 persons. Terms, \$2.50 per day or \$8 to \$16 per week. Boating, bathing and fishing. Tennis court and croquet grounds, also base ball games. Splendid roads for automobiling and driving. Beautiful walks. Mountain views unsurpassed in beauty. House open from June 6 to September 15.

WHITE RIVER JUNCTION.

GIBBS & WHEELER. "Junction House," White River Junction, Vt. Distance from railroad station 10 rods. Accommodates 250 persons. Terms, \$2.25 per day; per week, special.

WOODSTOCK.

MRS. CLARENCE E. WATKINS. "The Maples," Woodstock, Vt., but five minutes walk from station. Accommodates twelve persons. Terms, \$1.50 per day; \$8, \$9 and \$10 per week. Picturesque scenery, shady drives and walks. Excellent table. Garage in connection with house. One of the most delightful places to spend a vacation.

ARTHUR B. WILDER. "The Woodstock Inn," Woodstock, Vt. Conveyance, coach. Accommodates 150 persons. Terms, \$3 to \$5 per day, \$17.50 and up per week. Is situated among the foothills of the Green Mountains, 12 miles from the Connecticut River, in the valley of the Ottaquechee River. Interesting drives. Good roads for carriages or automobiles. Golf, tennis and winter sports. Garage in connection. Norman Williams Public Library accessible, and books available by card from the Inn office.

WINDSOR.

H. E. MORRILL, Windsor, Vt. Conveyance, hack. Terms, \$1 per day; \$6 per week. Fine drives along the Connecticut River. Grand view of Ascutney Mountain. Garage near.

MRS. W. A. DONOGHUE. "Mountain View Farm," Windsor, Vt. R. F. D. No. 2. Free transportation for guests. Accommodates thirteen persons. Terms, \$6 per week. High elevation. Good air. Beautiful scenery and a lovely view of Mount Ascutney, 3,320 feet high. Good table. Abundance of chickens, vegetables and berries in season. Good milk, cream and fresh eggs. Butter and cheese made on the farm. Telephone.

FRED H. CHESTER. "Windsor House," Windsor, Vt. Conveyance, 'bus. Accommodates 75 persons. Terms, \$2 and \$2.50 per day; \$10.50 to \$14 per week. Garage. From a scenic standpoint, Windsor is justly entitled to the distinction of being called the most beautiful town in the state. The most striking feature in the landscape is Ascutney Mountain, Vermont's grand old mountain, towering nearly 4,000 feet. In reality this peak is but three miles distant and is the objective point of thousands of tourists annually. Beautiful drives and automobile roads abound in this region, each one vieing with the others in its varied beauty and charm. A comfortable homelike hotel. Its architecture is colonial and sets well back from the street line with lawn and shade trees in front. Sleeping rooms are large, airy, light, pleasant apartments, comfortably furnished, lighted by electricity and heated by steam.

BROWNSVILLE.

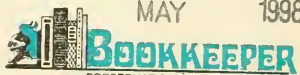
MRS. F. O. RANNEY. "Maplehurst Farm," Brownsville, Vt. Railroad station, Windsor, Vt., six miles distant. Free transportation for guests. Accommodates eight persons. Terms, \$6 per week. House is located on a hill about three minutes' walk from postoffice and church. Trout brook and grove near by. Fine view of Ascutney Mountain.

AUG 26 1911



Deacidified using the Bookkeeper process.
Neutralizing Agent: Magnesium Oxide
Treatment Date:

MAY 1998



PRESERVATION TECHNOLOGIES, L.P.
111 Thomson Park Drive
Cranberry Township, PA 16066
(724) 779-2111

LIBRARY OF CONGRESS



0 005 300 486 6

