

Historic, archived document

Do not assume content reflects current scientific knowledge, policies, or practices.

62,13

RECEIVED
APR 3 1926
U.S. DEPT. OF AGRICULTURE



Shade *and* Flowering Trees, Shrubs, Hedge Plants
Vines, Evergreens, Fruit Trees, *and* Small Fruits

HARDY FLOWERING
Perennials · Roses

1926
PRICE-LIST

THE BRISTOL NURSERIES, Inc.
BRISTOL, CONNECTICUT



Residence of C. E. Carlson, Bristol, Conn. Lawns and planting by Bristol Nurseries, Inc.
 Photographed less than one year after planting

The Bristol Nurseries are located on Pinehurst Road, Chippins Hill, two miles west of Bristol, and were formerly known as Paul M. Hubbard & Co. Nurseries. Increasing business necessitated a larger organization, and the business was accordingly incorporated in 1920.

Visitors are always welcome at the Nurseries and may visit without feeling any obligation to purchase. Motorists can best reach the Nurseries by continuing from the Boulevard through School and West Streets, to Terryville Avenue, turn left and follow the Bristol Nurseries' road-signs. We suggest, as far as possible, that intending purchasers come and personally select plants desired.

Landscape Gardening. In addition to growing and dealing in all kinds of plants, we are well equipped to make ornamental plantings, and will gladly prepare plans and estimates or furnish advice relative to residence plantings, the laying out of old-fashioned hardy gardens, rose-gardens, or the complete development of an estate.

Terms and Suggestions for Ordering. Please order as early as possible on receipt of this price-list. The planting season is all too short, and early ordering will enable us to make early delivery just as soon as planting conditions are right. Remittance may be made by post-office money order, check, or registered mail.

Express Shipments. On all shipments by express, we guarantee safe arrival to points within the United States. If a shipment fails to arrive, or is received from the Express Company in damaged condition, notify the agent, or sign for the goods as being received in damaged condition. We will promptly replace the shipment when informed.

Express Shipments and Truck Delivery. We cannot assume responsibilities for express shipments, and goods travel at purchaser's risk after being received by the forwarding company. We will, however, give careful attention to the selection and packing of orders for shipment. Express shipments go forward at the purchaser's expense. **Parcel Post.** Small shipments east of the Mississippi will require approximately an additional 10 per cent to amount of order. **Local Orders** will be delivered by truck without charge and long-distance truck delivery can be arranged at a reasonable charge.

Please Note. We take every possible care to select only strong, healthy, true-to-name plants. The subsequent behavior will be dependent on their care and on conditions not within our control, and for that reason **we give no guaranty** as to results. Plants proving untrue to name will be replaced without charge. Customers unwilling to accept shipments on these conditions should return goods promptly.

CONTENTS

	PAGE		PAGE
HARDY PERENNIALS	3-11	VINES	18
ROSES	11, 12	EVERGREENS	18-20
FLOWERING SHRUBS	13-16	EVERGREEN SHRUBS	20
HEDGE PLANTS	16	FRUIT TREES	21, 22
SHADE AND FLOWERING TREES	17	SMALL FRUITS	23

Choice Hardy Perennial Plants

PLEASE NOTE.—Plant orders will be forwarded by express, purchaser paying charges, unless we are otherwise instructed. Small orders may be forwarded by parcel post. If wanted this way, please add 10 per cent to value of plants.

Aconitum (Monkshood)

Fisheri. Forms a bushy clump 1½ feet in height. Large light blue flowers in September and October. Valuable for planting in semi-shaded spots. 35 cts. each, \$3.50 per doz.

Anchusa (Bugloss)

Italica, Dropmore. An effective garden plant. Pretty gentian-blue flowers in June on pyramidal branchy spikes, 3 to 5 feet in height. 35 cts. each, \$3.50 per doz.

Anemone japonica Japanese Windflower

Valuable garden plants, blooming from late August until severe frost; also desirable for cutting purposes. Plants grow 2 to 3 feet in height. Do not attain their best until thoroughly established, and are at home in any good garden soil which is well drained.

Alba. Pure, snowy white, single flowers.

Hupehensis. Mauve-rose; very free-flowering. Early.

Lady Ardilaun. Pure white, single flowers. Very free.

Louise Uhink. (New.) Very large, pure white, double flowers of good substance. A real acquisition on account of its vigorous growth and early-flowering tendency. 50 cts. each, \$5 per doz.

Prince Henry. Rosy red. An improvement on rubra.

Queen Charlotte. Large, semi-double flowers, La France pink in color.

Whirlwind. Semi-double, pure white flowers.

Aquilegia (Columbine)

Long-spurred Hybrids. We offer an unusually choice strain of these lovely hybrids, ranging in color tones from creamy white and yellow to bronze-red and blue shades. No two plants resemble each other in color, and the combination of shades found in this selection defies description. In choosing stock plants we invariably regard a thrifty, robust growth of equal importance to color and well-developed spurs. Visitors at our nursery, when these are in bloom, are most favorably impressed with this superior strain.

Cærulea. Rocky Mountain Columbine. Blue and white long-spurred flowers. Strong plants, will bloom this season.

Hardy Asters

The following four varieties are improved forms of the native wild Aster, common to our New England roadsides, and conspicuous during late summer and fall, and should not be confused with the better-known summer-flowering or China Aster.

Climax. Lavender-blue, with golden yellow center; branches gracefully recurving when in full bloom. One of the best. Height, 4 to 5 feet.

HARDY ASTERS, continued

Glen Eyrie. Mauve-pink. A very effective variety, attaining a height of 6 to 7 feet.

Mrs. F. W. Rayner. Large, rich rosy crimson flowers in September and October. Height, 4 feet.

Rachel Ballard. Rosy pink flowers in profusion. Height, 4 ft.

Thomas Ware. Rosy lilac. Very effective. Height, 3½ to 4 feet.

Dwarf Hardy Asters

Alpinus. Neat tufts of purplish blue flowers during May and June. Useful for rockeries. Height, 6 to 9 inches.

Lutetia. A rare and beautiful variety of hybrid origin, completely covered with pretty lilac-rose flowers, 2½ inches in diameter, from late August until October. Height, 2 feet. 35 cts. each, \$3.50 per doz.

Mauve Cushion. An attractive Japanese variety of dwarf, spreading growth, seldom exceeding 9 inches in height. Delicate, soft mauve flowers, with silvery white reflection, produced in great volume in late October and November. 35 cts. each, \$3.50 per doz.

Subcæruleus. Violet-blue, with distinct orange center. Useful for cutting. Height, 1½ feet.



Long-spurred Hybrid Columbines

Plants offered on this page, 25 cts. each, \$2.50 per doz., \$15 per 100, unless otherwise noted

Astilbe (Spiræa)

These are robust-growing plants of branching habit, producing graceful, feathered heads of flowers during late June and July. They do well in any good garden soil, and are very useful for cutting.

Juno. Deep violet-rose plumes; strong, erect growth. Height, 2½ feet.

Kriemhilde. Salmon-rose; very beautiful. Height, 2½ feet.

Rose Perle. Shell-pink; dense, pyramidal trusses. Height, 2½ feet.

Queen Alexandra. Light rose-pink; very free. Height, 2 feet.

50 cts. each, \$5 per doz.

Hardy Chrysanthemums

DECORATIVE TYPE

These are larger, more showy, and usually earlier in flowering than the Pompon or Button type. Very desirable for cutting. We recommend a selection from the following kinds for New England gardens.

Alice Howell. We consider this one of the very best garden Chrysanthemums. Flowers are single, produced in good sprays, and are of a wonderful rich shade of orange-yellow, an unusually effective garden color, and it can be depended upon to flower before severe frost sets in.

Autumn Glow. Rosy crimson.

HARDY CHRYSANTHEMUMS, continued

Ruth Cumming. Another garden variety of exceptional merit, rich reddish bronze in color. Growth is dwarf and compact. An unusually free-flowering variety, and altogether dependable for the garden. We consider this the best Chrysanthemum for cutting.

Aquitaine. Salmon-bronze.

Cranford's White. Large, pure white flowers.

Maduse. Terra-cotta-bronze; large.

Miss F. Collier. Pure white.

Normandie. Delicate pink.

Yellow Normandie. Bronzy yellow; extra good.

Lucifer. Rich ox-blood-red.

Framfield White. Pure white; semi-double; early.

BUTTON OR POMPON TYPE

Bright Eyes. Small button-like flowers; white, with orange reverse.

Mrs. H. Harrison. Lavender, light center. Early.

Eden. Rosy pink; large.

Ethel. A splendid bright red Baby Pompon.

Excelsior. Bright yellow.

Golden Climax. Orange-yellow.

Harvest Moon. Yellow.

Lillian Doty. Pink.

Maid of Kent. White.

Mariana. Large; white.

November Gold. Rich yellow; large flower.

Campanula

Carpatica. *Bellflower.* Bright blue, cup-shaped flowers. Dwarf habit.

Carpatica alba. Pretty white form of preceding.

Medium. *Canterbury Bells.* We can supply these ever-popular favorites in White, Pink, Lavender, Blue, and Mixed Colors.

Medium calycanthea. *Cup-and-Saucer.* White, Pink, Blue, and Mixed Colors.

Persicifolia. *Peach Bells.* Large, cup-shaped flowers on wiry stems 2 feet high. Fine for cutting. Blue or White.

Delphinium (Larkspur)

BRISTOL HYBRIDS

The Delphinium is, we believe, the most satisfactory of all border plants and is deserving of special care. It does not do well under congested conditions. A rich soil is desirable, but the roots must not come in contact with manures. Bone-meal should be well mixed into the soil before planting and a light application made after each crop of flowers is cut. If these are cut close to the ground, new flow-



Hardy Delphiniums

DELPHINIUM, continued

Belladonna, Cliveden Beauty. An improved Belladonna with larger individual flowers and taller stems. 35 cts. each, \$3.50 per doz.

Bellamosum. A dark blue form of Belladonna.

Dianthus. Hardy Garden Pinks

Grenadin. Old-fashioned, fragrant, double Pinks. White, pink, and scarlet.

Plumarius. June Pink. Large flowers with spicy fragrance.

Plumarius, Rose of May. Pretty double pink flowers, clove-scented.

White Reserve. Pure white; double.

Alwoodi, Mary. Delicate rose-pink, maroon center; double.

Alwoodi, Robert. Rose-pink, maroon center; single flower resembles a June Pink.

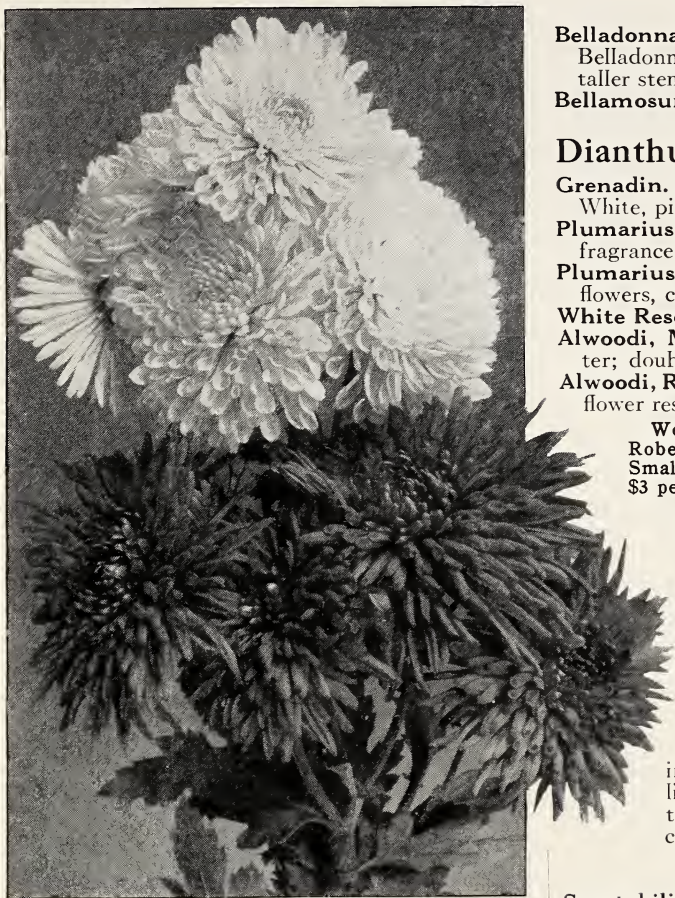
We offer heavy, two-year plants of Mary and Robert at 50 cts. each, \$5 per doz., \$35 per 100. Smaller size, will bloom this season, 30c. each, \$3 per doz., \$18 per 100.

DWARF CUSHION PINK

Dianthus cæsius, Hybrids. We secured this variety from Europe some years ago under this somewhat awkward name. It is a gem for the rockery. The growth is compact, extremely dense, and of true cushion formation. Unlike most plants of this type, it will not decay or damp off at the center during wet weather. Five-year-old plants in the nursery are still in perfect condition. Flowers vary from light to bright pink, completely obscuring the plant in early May. Strong plants, 35 cts. each, \$3.50 per doz., \$25 per 100.

Dielytra

Spectabilis. Bleeding-Heart. This fine old favorite has been almost unobtainable for several years. We have a good stock now of medium-sized plants. 50 cts. each, \$5 per doz.



Upper, Mariana Chrysanthemum;
Lower, Ruth Cumming. See page 4

DELPHINIUM, continued

ering growths will appear from the base of the plant, and, with proper care, will continue until frost.

Grown from seed selected with the utmost care from vigorous hybrids, we believe this selection will contain kinds that are fully equal to many of the best named varieties, with the advantage of added vigor. It is a fact that the finer European named varieties, which must be propagated from division or by cuttings, are prone to deteriorate in the process, and are not fully at home under our more changeable climatic conditions. Our hybrid strain includes a range of lovely colors varying from azure-blue to deepest purple, mauve-pink to rosy lavender. Many are semi-double, with distinct centers. Strong and vigorous, and, when well established, stately spikes attaining a height of 7 feet are not unusual.

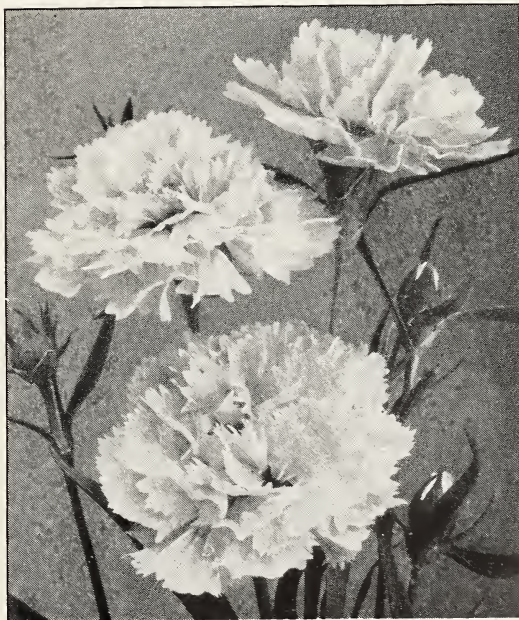
Strong, field-grown plants of the above Bristol Hybrids, 35 cts. each, \$3.50 per doz., \$25 per 100.

Mixed Hybrids. A good mixed strain, but not equal to Bristol Hybrids. 25 cts. each, \$2.50 per doz., \$15 per 100.

Belladonna. Light or turquoise-blue. Flower-spikes are of medium height, but are produced with great freedom from the end of June until hard frost. Valuable for garden effect or as a cut-flower.

Belladonna, Fanny Stormonth. Very large, light azure-blue flowers. 35c. each, \$3.50 per doz.

Price of Hardy Perennials, 25 cts. each, \$2.50 per doz., \$15 per 100, unless otherwise noted



Hardy Garden Pinks

Digitalis (Foxglove)

The Shirley. Those who admire the old-fashioned Foxglove will delight in this greatly improved strain of *Gloxiniæflora*. The flowers, unusually large in size, are daintily frilled, varying in color from white to deep rose-pink and are spotted crimson, maroon, and chocolate. It may be of interest to note that this fine strain was developed by the originator of the Shirley poppy. Robust constitution and is, for that reason, valuable for New England gardens. Strong plants, will flower this season, 30 cts. each, \$3 per doz., \$20 per 100.

Gloxiniæflora. *Foxglove.* White, Pink, Purple, and Spotted.

Monstrosa. *Mammoth Foxglove.* Mixed colors.

Echinacea

Purpurea (Rudbeckia). *Purple Coneflower.* A subject of real interest and one that should be better known. The daisy-like flowers are 4 inches across, with reddish purple petals surrounding a prominent cone-shaped center, brown in color. By careful selection over a period of years we have largely eliminated the magenta shades peculiar to the old type, and our strain blends well with other cut-flowers. Blooms from mid-July until October, when flowers are none too plentiful. Height 2½ to 4 feet. Large clumps, 50 cts. each, \$5 per doz.

Gaillardia

Grandiflora. *Blanket Flower.* A most satisfactory garden subject, flowering freely from July until frost, and invaluable for cutting. Showy flowers with dark brown centers and petals marked crimson, orange, and vermilion. 25 cts. each, \$2.50 per doz., \$15 per 100.

Golden Gleam. (New.) A splendid free-flowering variety, absolutely pure yellow. Valuable either in the garden or as a cut-flower. Strong plants, 50 cts. each, \$5 per doz.



German Iris

GAILLARDIA, continued

Portola. (New.) A great improvement and distinct in habit from all other Gaillardias. The growth is erect and vigorous, showing no tendency to spread. Flower brilliant coppery scarlet, with petals margined golden yellow, overlapping and forming a most attractive flower of great substance. Needs an open, sunny location, like all Gaillardias. Young plants, 50c. each, \$5 per doz.

Gypsophila

Paniculata fl.-pl. *Double Baby's Breath.* In every way superior to the well-known Baby's Breath. Fine for garden decoration but invaluable for cutting. The flowers are larger, pure white, and when cut may be dried and kept indefinitely. The dainty, mist-like sprays usually appear when sweet peas are at their best and are invaluable in combination with other garden flowers. This variety cannot be depended on to come true from seed, and for that reason the true type will always be scarce, as it is difficult to propagate. We offer strong, two-year-old plants grown from cuttings, and guaranteed true to name, at 50 cts. each, \$5 per doz.

Paniculata. *Single Baby's Breath.* Like the above, with single flowers.

Heuchera · Coral Bells

Dainty plants of compact, bushy habit, 1½ to 2 feet in height when in flower. Graceful flower-spikes of minute, bell-shaped flowers on wiry stems during July and August. Excellent for cutting.

Gracillima rosea. Salmon to carmine-rose. Strong habit and very free.

Sanguinea splendens. Coral-red.

35 cts. each, \$3.50 per doz.

Hibiscus (Mallow Marvels)

A great improvement on our native Mallows. Flowers average 10 to 12 inches across and are gorgeously colored. These Mallows are at home as a water-edge plant, but do equally well in the hardy garden or shrub border. The average growth is 5 to 6 feet. Strong, four-year roots, 50 cts. each, \$5 per doz.

Hollyhocks

We can supply large, healthy, rust-free plants of these stately garden subjects in mixed colors and with single flowers. The double varieties come in White, Rose-Pink, Yellow, Crimson, and Maroon. 25 cts. each, \$2.50 per doz.

Exquisite. The flowers of this splendid new Hollyhock are very large, delicately curled and fringed, and entirely distinct from the familiar double Hollyhock. Flowers are peculiarly marked or blotched in colors varying from rose to dark purple. With white-margined petals, not unlike a pelargonium. 35 cts. each, \$3.50 per doz.

Iris Germanica

German or Liberty Iris

Alcazar. Very large flowers with light violet standards; falls deep purple, with bronze-veined throat. Fine vigorous growth. 50 cts. each, \$5 per doz.

Amas. Rich violet-blue, very large flowers. 2 feet high.

Aurea. Chrome-yellow.

Plants offered on this page, 25 cts. each, \$2.50 per doz., \$15 per 100, unless otherwise noted

IRIS GERMANICA, continued

- Black Knight.** *Black Prince.* Standards purplish blue; falls deep blackish purple. One of the deepest in color. \$1 each, \$10 per doz.
- Blue Jay.** Clear blue, shaded dark blue. 35 cts. each, \$3.50 per doz.
- Caprice.** Rosy red, yellow beard. 35 cts. each, \$3.50 per doz.
- Caterina.** Standards clear blue; falls soft lilac. The large flowers are borne on stout, branching stems over 4 feet high. 50 cts. each, \$5 per doz.
- Candelabre.** Lovely lavender-blue blooms dotted with darker blue. The flowers are large and distinct, making this an excellent variety for any collection. 35 cts. each, \$3.50 per doz.
- Empress of India.** Very large flowers of a rich but delicate blue color. Stately flower-stems. \$2 each.
- Halfdan.** Creamy white.
- Her Majesty.** Clear rose-pink, bright crimson falls; extra fine. 35 cts. each, \$3.50 per doz.
- Ingeborg.** Large, pearly white flowers; medium growth.
- Iroquois.** Smoky lavender and maroon. Fine erect habit. 35 cts. each, \$3.50 per doz.
- Juniata.** Clear blue; vigorous grower. 35 cts. each, \$3.50 per doz.
- King of Iris.** Lemon-yellow; satiny brown falls. Extra. 50 cts. each, \$5 per doz.
- Mandaliscæ.** Rich lavender-purple; large flowers; early. Height, 40 inches. 25c. each, \$2.50 per doz.
- Mme. Chereau.** White, edged light blue.
- Monsignor.** Rich satiny violet standards; velvety purple falls. 35 cts. each, \$3.50 per doz.
- Mrs. Darwin.** White, reticulated violet.
- Pallida Dalmatica.** Lavender, shaded blue. Very robust and fragrant. 30 cts. each, \$3 per doz.
- Pumila.** Very pretty dwarf species, flowering in April. Purple.
- Pumila Aurea.** Desirable yellow form of above.
- Purple King.** Large, reddish purple flowers. Very effective. 35 cts. each, \$3.50 per doz.
- Quaker Lady.** Standards an odd shade of smoky lavender with shading of yellow; falls ageratum-blue and old-gold; beard and stigmas yellow. 50 cts. each, \$5 per doz.
- Queen of May.** Soft lilac-rose, almost pink. Tall grower. 25 cts. each, \$2.50 per doz.
- Rose Unique.** Bright violet-rose—the nearest approach to a true pink Iris. 50 cts. each, \$5 per doz.
- Sherwin Wright.** New. Golden yellow; very free and vigorous. Fine. 35 cts. each, \$3.50 per doz.
- Tecumseh.** Smoky violet, shaded yellow and buff. 35 cts. each, \$3.50 per doz.
- Violacea grandiflora.** Rich violet-purple. Fine.
- White Knight.** Pure snowy white. The best in this color. 50 cts. each, \$5 per doz.
- Any of the above Irises, 20 cts. each, \$2 per doz., \$12 per 100, unless otherwise noted

Iris Kaempferi (Japanese Iris)

Named kinds in assortment. 30 cts. each, \$3 per doz.

Garden Lilies · *Lilium*

- Auratum.** *Golden-banded Lily of Japan.* 50 cts. each, \$5 per doz., \$35 per 100.
- Speciosum album.** White. 50 cts. each, \$5 per doz., \$35 per 100.
- Speciosum rubrum.** White, spotted crimson. 50 cts. each, \$5 per doz., \$35 per 100.
- Tigrinum splendens.** *Improved Tiger Lily.* Showy orange-red with black spots. Easy to grow. 25 cts. each, \$2.50 per doz.

NEW HARDY LILY (*Lilium regale*)

Undoubtedly this new Chinese Lily will prove one of the most satisfactory of all garden Lilies. It blooms in July when flowers are not over-abundant, and, when established, attains a height of 5 feet, producing large, trumpet-shaped, fragrant flowers not unlike the Easter Lily, ivory-white in color, with pink and soft yellow shadings. Unlike the Japanese Lilies, it improves from year to year and actually increases its bulbs, so that every third or fourth year the bulbs may be taken up, reset, and the planting enlarged. Strong flowering bulbs. 75 cts. each, \$7.50 per doz.

Lupine · *Lupinus*

- Polyphyllus.** *Lupine.* Handsome blue spikes.
- Polyphyllus albus.** White.
- Polyphyllus roseus.** Pink.

35 cts. each, \$3.50 per doz., \$25 per 100

NEW LUPINES, REGAL HYBRIDS

This new strain of hybrid Lupines of English origin has attracted a great deal of attention from European garden lovers. Those who are familiar with the white, blue, and pink Lupines—a favorite in American gardens—will welcome the new colors introduced in this strain, comprising creamy whites, amber, coppery orange, salmon-rose, lavender-blue, and many bicolored sorts. These do not come strictly true from seed and cannot be offered in separate colors, but all are entirely desirable. Strong plants, will flower this season, 50c. each, \$5 per doz.

Oriental Poppy · *Papaver orientalis*

Poppies after flowering in June, die down until early fall, when the foliage reappears, and they require two seasons to get properly established.

- Cerise Beauty.** Lovely cerise-pink, blood-crimson center, dark blotch at base of petals. 35 cts. each, \$3.50 per doz.



Lilium speciosum

Plants offered on this page, 25 cts. each, \$2.50 per doz., \$15 per 100, unless otherwise noted

ORIENTAL POPPIES, continued

Gerald Perry. Uniform shade of apricot-pink, conspicuously blotched crimson. 35c. ea., \$3.50 per doz.

Goliath. Large, deep vivid crimson flower. 35 cts. each, \$3.50 per doz.

Mrs. Perry. Soft salmon-rose. A most effective garden color. 35 cts. each, \$3.50 per doz.

Choice Mixed. Gorgeous flowers in numerous shades including White, Salmon-Pink, Flaming-Scarlet, and Dark Crimson. 25 cts. each, \$2.50 per doz.

Iceland Poppies

"Coonara Pinks." A delightful new strain of Australian introduction, combining pink and salmon shades of wonderful delicacy. The flowers are borne profusely on long, slender stems throughout the season, and are very dainty when cut. They will keep well if cut in the bud and the ends of the stems seared or scalded for a moment. From pots, 35 cts. each, \$3.50 per doz.

Pæonia · Peony

In planting this fine old favorite, provide a good soil, deeply dug and enriched with well-decayed manure, to which a sprinkling of bone-meal should



Border of Peonies

PEONIES, continued

be added. The fertilizer should not come in direct contact with the roots, and the plants should be set just deep enough to cover the crowns. While the large two-year plants offered should bloom the first season, it requires from two to three years before the flowers will appear in their true form. We offer some very choice kinds in addition to the older varieties. All are good.

50 cts. each, \$5 per doz., unless otherwise noted

Albatre. Pure white petals, edged carmine. Extra fine. 75 cts. each, \$7.50 per doz.

Asa Gray. Flesh-color, sprinkled with carmine.

Couronne d'Or. White; golden stamens.

Duchesse de Nemours. Pure white; large and fragrant.

Edulis Superba. Deep rose-pink. Early.

Festiva Maxima. Waxy white, flecked carmine.

Felix Crousse. The best bright red. \$1 each, \$10 per doz.

Livingstone. Pale lilac-rose, tipped silver and flecked carmine. Very free and vigorous. \$1 each.

Marguerite Gerard. Pale hydrangea-pink, minutely marked dark crimson. Medium height; free flowering. Late. \$1 each.

Meissonier. Brilliant purple-red, center deep crimson. 50 cts. each.

Mons. J. Elie. Lilac-rose, silvery reverse. Very large. \$1 each, \$10 per doz.

Officinalis Rubra. This is the old-fashioned early-flowering variety. Large, full, deep crimson flowers; very fragrant. Stock limited. \$1 each.

Prince Imperial. Amaranth-red. Very good.

Triomphe de l'Exposition de Lille. Pale pink, splashed rose. 75 cts. each, \$7.50 per doz.

Hardy Phlox

Given good soil and divided every two or three years, these splendid hardy plants will not deteriorate. Their gorgeous colors are invaluable to the garden from midsummer until late in the season. During dry periods water should be applied copiously. If mildew appears during changeable weather, coating the leaves with a white powdery substance, spray with liver of sulphur (sulphide of potassium), 1 ounce to 3 gallons of water, to which a little soap should be added. Plant 1½ to 2 feet apart.



Lupinus polyphyllus. See page 7

Plants offered on this page, 25 cts. each, \$2.50 per doz., \$15 per 100, unless otherwise noted

New Varieties of Phlox

50 cts. each, \$5 per doz.

- Debs.** A splendid new Phlox in a much-wanted color—vivid cherry-crimson, without any tendency to shade or bleach out. Not a large flower, but by far the most effective red Phlox.
- Evelyn.** Rich salmon-rose in color; the individual flowers are very large and the trusses are immense. A strong-growing Phlox, from 2½ to 3 feet high.
- Homeland.** Brilliant oriental red with orange suffusion and crimson eye; very vivid.
- Mia Ruys.** Enormous trusses of purest white; dwarf, branchy habit.
- Mrs. Milly von Hoboken.** Very large flowers of a soft pink shade, without eye, and unusual in that respect. Strong, erect spike. A good novelty.
- Mrs. Scholten.** A new Phlox of outstanding merit, and one that will be conspicuous in any collection. The individual flower is unusually large and is carried on enormous, pyramidal spikes. The color is a vivid salmon, shading to red, and quite distinct from others in this section.
- W. Kesselring.** Vivid reddish violet, with large white eye. The most effective variety in this color.

General List of Phlox

- Alpha** (Maculata Hybrid). Similar to Miss Lingard in habit. Rich soft pink in color and very free flowering. 2½ feet.
- B. Comte.** Brilliant French purple. The best Phlox in this color. 35 cts. each, \$3.50 per doz.
- Bridesmaid.** White, distinct crimson eye.
- Coquelicot.** Orange-red.
- Elizabeth Campbell.** Light salmon-pink, dark red eye. Extremely choice. 35 cts. each, \$3.50 per doz.



Hardy Phlox

- Frau A. Buchner.** Extra-good white.
- Frau G. van Lassburg.** Pure white. Vigorous.
- Goliath.** Carmine-crimson, red eye. Very strong.
- Gruppenkonigen.** Flesh-rose.
- Josephine Gerbeaux.** White, red eye.
- Jules Sandeau.** Very large trusses of pure pink flowers; individual florets of unusual size. Growth medium, very free.
- Louise Abbema.** Dwarf; pure white.
- Maid Marian.** (New.) A lovely shade of soft lavender. Flowers large and freely produced. 35 cts. each, \$3.50 per doz.
- Miss Lingard.** Pure white flowers from May on. Glossy foliage.
- Mme. P. Dutrie.** Soft lilac-pink.
- Ornament.** A splendid bright pink, flowering over a long period.
- Pantheon.** Bright carmine-rose.
- Rheinlander.** Salmon-pink; very large trusses. 35 cts. each, \$3.50 per doz.
- Riverton Jewel.** Mauve-rose, carmine-red eye.
- Rynstrom.** Rose-pink.
- Special French.** Beautiful shade of clear pink; vigorous. 35 cts. each, \$3.50 per doz.
- Thor.** Salmon-pink.
- W. C. Egan.** Delicate lilac, with solferino eye.
- Phlox divaricata canadensis.** Completely covered with fragrant lavender flowers during April and May. Height, 10 inches. Splendid for massing.
- Phlox subulata.** Moss Pink. Excellent for the rockery. Covered with flowers in early spring. White, Lavender, and Pink. 20 cts. each, \$2 per doz., \$15 per 100.



Physalis Francheti

- Physalis**
- Francheti.** Chinese Lantern Plant. Bright orange-scarlet lantern-like fruits. Very useful for winter decoration when cut and dried. Requires an open, well-drained location. 25 cts. each, \$2.50 per doz.

Plants offered on this page, 25 cts. each, \$2.50 per doz., \$15 per 100, unless otherwise noted

Primrose · Primula · Cowslip

Veris. These fine old favorites are most welcome during the early spring season. They like a rich soil; a position somewhat sheltered from strong winds, and partially shaded from the sun. A splendid strain of mixed colors. Heavy, 2-yr. clumps, 35 cts. each, \$3.50 per doz.

Pyrethrum

Hybridum. Colored Daisy. One of the fine old-fashioned garden flowers, doing well in any good garden soil fully exposed to the sun, flowering freely in June, and more or less during the autumn months. Colors include White, Pink, and Red, but can be supplied in mixed colors only. Height, 2 feet.

Uliginosum. Giant Daisy. Large, pure white flowers from July to September. Height, 3 to 4 feet.

Sweet William

We can supply this fine old-fashioned favorite in plants grown from the choicest European strains available, and almost true to color.

Diadem. Crimson, pure white eye.

Newport Pink. Effective shade of salmon or watermelon-pink.

Pure White. Very large flowers.

Scarlet Beauty. Rich deep scarlet.

Mixed. Including all colors.



Primula veris

Siberian Wallflower

Cheiranthus Allioni

Dazzling orange flowers on stems a foot in height. Glossy attractive foliage. Quite hardy, but should be regarded as a biennial. It literally flowers itself to death. 25 cts. each, \$2.50 per doz.

Trollius · Globe Flower

Handsome buttercup-like flowers on stems 1 to 2 feet high, during May and June, preferring a moist, cool soil, half shade or full sun. Very permanent when established.

Europæus. Bright yellow.

Orange Globe. Large orange flowers.

35 cts. each, \$3.50 per doz.

Viola

Jersey Gem. The best bedding Viola yet introduced, thriving under ordinary garden conditions and flowering from May until frost. Habit compact and sturdy. The flowers are pure violet, carried on sturdy, 6-inch stems, and very desirable for cutting. A splendid border or rock plant, originated by T. A. Weston, editor and horticultural writer of note. From pots, 35 cts. each, \$3.50 per doz.

Veronica · Speedwell

Blue Ridge. A new variety of medium height. Bright blue flowers on handsome spikes. Very desirable for cutting.

Longifolia subsessilis. Giant Speedwell. Long, dense, deep blue spikes from July to September. An extra-good garden subject. 35 cts. each, \$3.50 per doz.

Spicata. Compact habit, growing about 1½ feet in height. Attractive spikes of bright blue flowers in June and July. Very free.

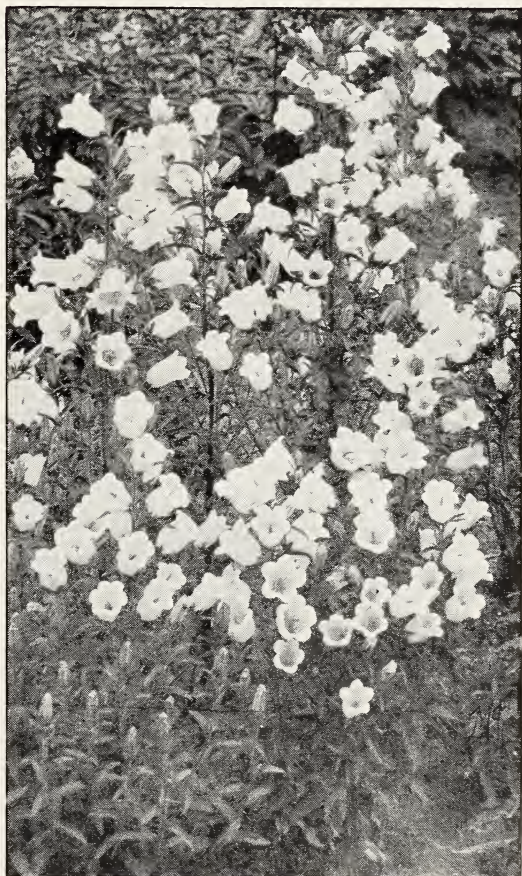
Spicata rosea. Form of the above with delicate pink flowers.



Trollius Europæus

General List of Hardy Perennials

- ACHILLEA (Yarrow), Boule de Neige.** Splendid for massing and for cutting.
Perry's White. For massing or cutting.
- ALYSSUM saxatile compactum.** Yellow; dwarf.
- ARABIS alpina fl.-pl.** Double Rock Cress. Pure white, double flowers. Dwarf.
- ASCLEPIAS tuberosa.** Butterfly Weed. Orange-scarlet.
- BOLTONIA. False Chamomile.** Showy plants of tall growth, flowering in late summer.
asteroides. White.
latisquama. Lavender.
- CERASTIUM tomentosum.** Snow-in-Summer. Silvery foliage; white flowers; dwarf.
- CHELONE Lyonii.** Turtlehead. Rose-purple flowers.
- ECHINOPS Ritro.** Globe Thistle.
- ERYNGIUM amethystinum.** Sea Holly.
- ELSHOLTZIA stauntonii.** Mint Shrub. Lilac-purple flowers in late fall. Aromatic foliage and shrub-like habit. Clumps, 50 cts. each, \$5 per doz. Plants from small pots, 25 cts. each, \$2.50 per doz.
- EUPATORIUM (Conoclinium) caelestinum.** Hardy Ageratum. Light blue flowers from August on.
- FUNKIA subcordata grandiflora.** August Lily. White, lily-shaped, fragrant flowers. 50 cts. each, \$5 per doz.
media picta. Showy green-and-white foliage.
cærulea. Light blue flowers.
- GEUM Heldreichi splendens.** Single orange-yellow flowers in May and June. The hardiest of this family. Handsome strawberry-like foliage attractive throughout the season.
- HELENIUM autumnale rubrum.** Sneezewort. Terra-cotta flowers in autumn.
autumnale superbum. Golden yellow flowers.
Riverton Beauty. Rich lemon-yellow.
- HELIOPSIS scabra zinniflora.** Orange Sunflower. Semi-double flowers in late summer.
- HEMEROCALLIS flava.** Yellow Day Lily.
fulva. Tawny Day Lily.
- IBERIS sempervirens.** Hardy Candytuft. Evergreen foliage; dwarf; white flowers in spring.
- LIATRIS pycnostachya.** Cat-tail Gayfeather. Attractive rosy purple flower-spikes. 4 to 5 feet.
- LYSIMACHIA clethroides.** Loose-Strife. White, recurving flower-spikes.
- MERTENSIA virginica.** Virginia Blue Bells.
- MONARDA didyma, Cambridge Scarlet.** Brilliant crimson-scarlet.
- ÆNOTHERA missouriensis.** *Æ. macrocarpa.* Large yellow flowers.
- PACHYSANDRA terminalis.** Japanese Spurge. A valuable ground-cover. 20 cts. each, \$2 per doz., \$15 per 100.
- PHYSOSTEGIA virginiana.** False Dragonhead. Pink.
virginiana alba. White.
- PLATYCODON grandiflorum.** Japanese Bellflower. Blue.
grandiflorum album. White.
- PLUMBAGO larpentæ.** Leadwort. Dwarf habit. Deep blue flowers.
- SALVIA azurea grandiflora.** Sky-blue flower-spikes, 4 to 6 feet in height, during autumn.
- SAPONARIA ocymoides splendens.** Rosy flowers; trailing habit.
- SCABIOSA caucasica.** Blue Bonnet. Soft lavender-blue. 35 cts. each, \$3.50 per doz.
- SEDUM Sieboldii.** Bluish foliage; pink flowers.
Stahli. Low-growing; crimson-tinted foliage.
spurium splendens. Rosy crimson flowers.
- STATICE latifolia.** Sea Lavender.
- STOKESIA cyanea.** Cornflower Aster. Blue.
cyanea alba. Pure white form.
- TRITOMA Pfitzeri.** Red-Hot-Poker.
- VINCA minor.** Trailing Myrtle. 15 cts. each, \$1.50 per doz., \$15 per 100.
- YUCCA filamentosa.** Adam's Needle. 35 cts. each, \$3.50 per doz.



Campanula Medium. See page 4

Plants offered on this page, 25 cts each, \$2.50 per doz., \$15 per 100, unless otherwise noted



Garden Roses

Hybrid Perpetuals

These are of the more sturdy type of Roses, and for the average garden are the most desirable. A mulch of manure or leaves should be supplied in late November. From one-half to two-thirds of the wood should be cut away, and the weak branches removed entirely in early spring. Those marked * will flower again in autumn.

Strong, 2-yr. plants, 90 cts. each, \$9 per doz.

***Frau Karl Druschki.** Pure white—the best of its color.



Mrs. Charles Bell Rose

General Jacqueminot. The popular scarlet "Jack Rose."

***George Arends.** Rose-pink Frau Karl Druschki.

***Gloire de Chedane Guinoisseau.** Velvety red. New.

Hugh Dickson. Crimson-scarlet.

***Mrs. John Laing.** Soft pink. Extra good.

***Mrs. R. G. Sharman-Crawford.** Rosy pink. Very free.

***Paul Neyron.** Dark rose; enormous size.

Prince Camille de Rohan. Deep crimson.

***Ulrich Brunner.** Cherry-red. Vigorous and free.

Everblooming Hybrid Tea Roses

These are more continuous in flowering and almost as hardy as the preceding kinds. Prune hard in early spring and cut back flower-stems half way during summer as the flowers wither. Protect in winter with soil, leaves, or manure.

Strong, 2-yr. plants, 90 cts. each, \$9 per doz.

Columbia. New. Glowing pink.

Duchess of Wellington. Saffron-yellow.

Etoile de France. Deep crimson.

General MacArthur. Crimson-scarlet.

Gruss an Teplitz. Scarlet-crimson. Very free.

Jonkheer J. L. Mock. Carmine-pink.

Kaiserin Auguste Viktoria. Creamy white.

Killarney. The favorite pink.

Lady Alice Stanley. Deep coral-pink. Very free.

Los Angeles. Flame-pink, shaded coral and toning to gold at the base of the petals. Long, nicely pointed buds; flowers large.

Lolita Armour. Deep coral-red, toning coppery red and gold. Large flowers of great substance. Good growing habit.

Mme. Caroline Testout. Satiny pink.

EVERBLOOMING HYBRID TEA ROSES, con.

- Mme. Edouard Herriot** (Daily Mail Rose.) Coral-red. Distinct.
- Mrs. Aaron Ward.** Indian-yellow, shaded cream. Very free.
- Mrs. Charles Bell.** Shell-pink. Extra good.
- Ophelia.** Salmon-rose. A grand Rose.
- Panama.** White, occasionally shaded pink. Extremely free.
- Radiance.** One of the best. Carmine-pink.
- Red Radiance.** A fine cerise-red.
- Red-Letter Day.** Semi-double; scarlet-crimson. Very free and showy.
- Souvenir de Claudius Pernet.** Bright sunflower-yellow without shading—entirely distinct from all other yellow Roses, and the most striking variety yet introduced because the color will not fade or sun-scald. Large flowers and attractive glossy foliage. We find this Rose somewhat difficult to handle, but wonderful when right. Strong, 2-yr. plants, \$1.50 each, \$15 per doz.
- Souvenir de H. A. Verschuren.** Apricot-yellow, shading to saffron-yellow. A strong-growing, free-flowering Rose. \$1.50 each, \$15 per doz.
- Souvenir du President Carnot.** Light pink.
- White Killarney.** White.

Hardy Roses

Growing Plants from Pots

NEW ROSE, MARY WALLACE

This is a charming new Rose, whose interesting history is fully covered in the American Rose Society's 1924 Annual. Following is the official description given by the Department of Agriculture.

"Mary Wallace (W. C. 124). Pillar rose type. Makes a fine, strong, self-supporting rose 6 to 8 feet high, with large, glossy foliage, resistant at Bell to all diseases. Blooms with great freedom in spring, and bears a considerable number of fine buds in summer and fall. Flowers well-formed, semi-double, bright, clear rose-pink, with salmon base to the petals. Largest in size of any Wichuraiana hybrid, generally exceeding 4 inches in diameter. Hardy; readily propagated. Has been tested at Bell Station, Md.; Portland, Ore.; Syracuse, N. Y.; Harrisburg, Pa., and Hartford, Conn."

Strong, 2-yr. plants, \$1 each, \$10 per doz.; extra large, 6 to 8 ft. plants., \$2 each, \$20 per doz.

Heart of Gold

Originated at the Maryland Station of the Department of Agriculture by the late Dr. Van Fleet. Described by the Department officially, as follows:

"This new free-growing climber is one of the late Dr. Van Fleet's originations, and is being introduced by the American Rose Society and the U. S. Department of Agriculture. Its dark green foliage is disease-resistant, and the large single flowers, 2 to 3 inches across, are dark purplish crimson with white centers, and an abundance of showy golden yellow stamens. They are slightly fragrant and are borne in large clusters." Strong, 2-yr. plants from pots, \$2 each.

Climbing Roses

Strong, 2-yr. plants, 75 cts. each, \$7.50 per doz., unless otherwise noted

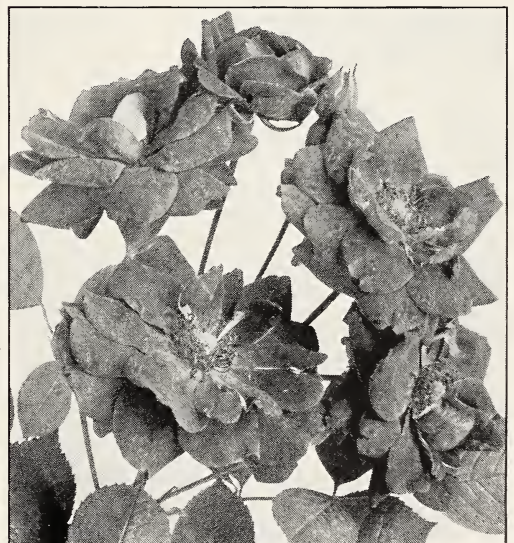
- American Pillar.** Rose-pink, distinct white eye.
- Christine Wright.** Large, double, apple-blossom-pink flowers.
- Climbing American Beauty.** Large, rosy crimson flowers.

CLIMBING ROSES, continued

- Crimson Rambler.** The well-known crimson climber.
- Dorothy Perkins.** Soft shell-pink.
- Dr. Van Fleet.** Full, double flesh-pink flowers. Extra good.
- Excelsa.** Crimson-scarlet. Healthy, glossy foliage.
- Hiawatha.** Brilliant carmine, distinct white eye. Single.
- Lady Gay.** Soft pink.
- Paul's Scarlet Climber.** A new climber of exceptional merit. Vivid scarlet, semi-double flowers.
- Silver Moon.** Large silvery white, single flowers.
- Tausendschon** (Thousand Beauties). Soft pink, turning to carmine.
- White Dorothy Perkins.** A white duplicate of Dorothy Perkins.

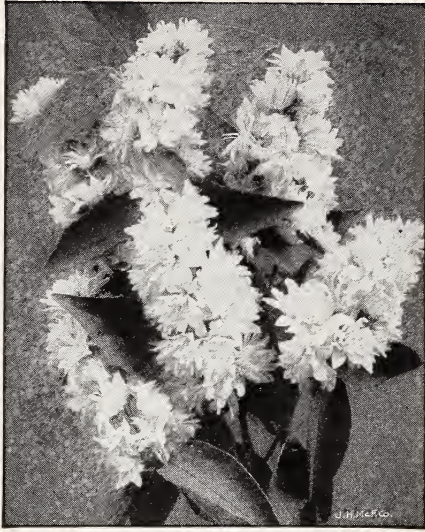
Miscellaneous Roses

- BABY RAMBLER ROSES, EVERBLOOMING.**
White, Pink, Red. 75 cts. each, \$7.50 per doz.
- MOSS ROSES.** White, Pink, Red. 75 cts. each, \$7.50 per doz.
- RUGOSA ROSES AND HYBRIDS.** *Rugosa*
Red and *Rugosa* White. 60c. each, \$6 per doz.
- Blanc Double de Coubert.** Fine double white.
- Conrad F. Meyer.** Silvery pink. \$1 each, \$10 per doz.
- Austrian Copper.** Large single flowers of bright coppery red, golden yellow reverse, very vivid. 75 cts. each, \$7.50 per doz.
- F. J. Grootendorst.** A hybrid of *R. rugosa* and Baby Rambler. Strong shrubby grower with ever-blooming Baby Rambler habit. Good crimson color and absolutely hardy. A fine hedge Rose. 2-yr. plants, \$1 each, \$10 per doz.
- Persian Yellow.** Deep yellow flowers. The old-fashioned early-flowering bush Rose of grandmother's time. 75 cts. each, \$7.50 per doz.
- Rosa Hugonis.** A very attractive Rose species recently introduced from China, producing dainty, soft yellow, single flowers, in long sprays early in May—the earliest rose to bloom. Shrub-like in growth, it should be planted in the border, not the Rose-garden. Strong plants, \$1.25 ea.; extra-strong plants, \$2 each.



Paul's Scarlet Climber Rose

Choice Flowering Shrubs



Deutzia crenata plena

ACANTHOPANAX pentaphylla. <i>Fine-leaved Aralia.</i> Glossy green leaves; prickly branches. Does well in shade.	Each	Doz.
2 to 3 ft.....	\$0 60	\$6 00
3 to 4 ft.....	75	7 50
AZALEA arborescens. <i>Fragrant Azalea.</i> White, tinged rose; sweet scented. 1½ to 2 ft...	2 50	25 00
lutea. <i>Flame-colored Azalea.</i> Various shades from yellow to red. 1½ to 2 ft.....	2 50	25 00
mollis hybrids. <i>Chinese Azalea.</i> Very free-flowering and hardy; yellow and orange. 15 to 18 in.....	1 50	15 00
yodogawa. Double flowers; lavender-pink; very pretty and quite hardy. 1 to 1½ ft.....	2 50	25 00
2 to 2½ ft.....	3 50	35 00
amœna and Hinodigiri. See Evergreen Shrubs.		
BERBERIS Thunbergi. <i>Japanese Barberry.</i> See Hedge Plants.		
BUDDLEIA magnifica. <i>Butterfly Bush.</i> Violet-colored flowers, borne in graceful racemes. Very free and useful for cutting. 2-yr. plants.....	60	6 00
CALYCANTHUS floridus. <i>Sweet Shrub.</i> Fragrant, chocolate-colored flowers. Prefers a moist, shaded spot. 2 to 3 ft..	60	6 00
CLETHRA alnifolia. <i>Summer Sweet.</i> Creamy white, fragrant flowers. Good for moist or shady spots. 1½ to 2 ft.....	60	6 00
CORNUS stolonifera. <i>Red-twigged Dogwood.</i> Showy red branches. 2 to 3 ft.....	60	6 00

Cornus stolonifera aurea. <i>Golden-twigged Dogwood.</i> Golden yellow branches. Valuable for winter effect. 2 to 3 ft.....	Each \$0 60	Doz. \$6 00
CYDONIA japonica. <i>Japanese Quince.</i> Completely covered with showy scarlet flowers in late spring. 2 to 3 ft.....	1 00	10 00
DEUTZIA crenata plena. <i>Pride of Rochester.</i> Double white flowers in May. Tall-growing. 3 to 4 ft.....	60	6 00
crenata rosea. A rosy pink form. 3 to 4 ft.....	60	6 00
gracilis. Dwarf-growing. One of the best low shrubs. White. 15 to 18 in.....	60	6 00
18 to 24 in.....	75	7 50
Lemoinei. More vigorous and free-flowering than <i>D. gracilis</i> . Pure white. 18 to 24 in.....	60	6 00
24 to 30 in.....	75	7 50
EUONYMUS alatus. <i>Winged Burning Bush.</i> Twigs peculiarly winged. Foliage turning red and crimson in autumn. 2 to 3 ft.....	75	7 50
3 to 4 ft.....	1 00	10 00
See also Evergreen Shrubs.		
FORSYTHIA intermedia. <i>Golden Bell.</i> Golden yellow flowers in early spring. 3 to 4 ft.....	60	6 00
suspensa. A slender, drooping-branched form. 3 to 4 ft....	60	6 00
spectabilis. A splendid new variety. Large showy flowers in great profusion. 3 to 4 ft....	1 00	



Azalea lutea

CHOICE FLOWERING SHRUBS, continued

HIBISCUS syriacus. <i>Althea.</i> Very attractive from August to October. Should be pruned back hard in March. Double flowers. White, rose-pink, and red. 3 to 4 ft.....	Each	Doz.	
			\$0 60 \$6 00
HYDRANGEA arborescens grandiflora. <i>Snowball Hydrangea.</i> Pure white, ball-shaped flowers during July and August. Very showy. 1 to 1½ ft.....			60 6 00
1½ to 2 ft.....			75 7 50
paniculata grandiflora. <i>Common Hydrangea.</i> Large, white flowers, turning bronzy pink in fall. Very popular. 1½ to 2 ft....			60 6 00
2 to 2½ ft.....			75 7 50
Tree form, 3 to 4 ft.....			1 25
ILEX verticillata. <i>Winterberry.</i> Brilliant scarlet fruits in fall. 1½ to 2 ft.....			60 6 00
LILAC. See <i>Syringa.</i>			
LONICERA Maackii. <i>Shrub Honeysuckle.</i> Handsome foliage and pretty white flowers. 2 to 3 ft..			60 6 00
Morrowi. <i>Japanese Bush Honeysuckle.</i> White flowers; showy red fruit in August. This and the preceding kind are invaluable for massing. 2 to 3 ft...			60 6 00
tatarica. <i>Tartarian Honeysuckle.</i> Strong, upright grower. Pink flowers; orange-red berries in summer. 2 to 3 ft.....			60 6 00
PHILADELPHUS Lemoinei, Avalanche. <i>Syringa</i> or <i>Mock Orange.</i> Snow-white flowers; dwarf habit. 2 to 3 ft.....			60 6 00
3 to 4 ft.....			75 7 50
coronarius. The fragrant, tall-growing white <i>Syringa.</i> 2 to 3 ft.....			60 6 00
3 to 4 ft.....			75 7 50
coronarius grandiflorus. <i>Large-flowering Mock Orange.</i> 2 to 3 ft.....			60 6 00
Virginal. A greatly improved <i>Mock Orange.</i> Fragrant, semi-double, pure white flowers, densely clustered, completely cover the plant during June, with occasional flowers appearing later in the season. 2 to 3 ft.....			1 00 10 00
PRIVET. See <i>Hedge Plants.</i>			
RHODOTYPOS kerrioides. <i>White Kerria.</i> A really graceful shrub of medium growth. Dainty single white blossoms followed by black berries. 2 to 3 ft. . .			60 6 00
3 to 4 ft.....			75 7 50
RHUS typhina laciniata. <i>Staghorn Sumac.</i> Fernlike leaves; tall-growing. 3 to 4 ft.....			75 7 50
Cotinus. <i>Smoke Tree.</i> An old favorite tree of dwarf growth. Flowers resemble smoke-puffs. 2 to 2½ ft.....			60 6 00



Syringa vulgaris

SNOWBALL. See <i>Viburnum</i> and <i>Hydrangea.</i>	Each	Doz.	
SPIRÆA arguta. <i>Snow Garland.</i> Small pure white flowers in early spring; dainty foliage and medium growth. 3 to 4 ft..			\$0 60 \$6 00
callosa alba. Low, dense growth; white flowers all summer. 1 to 1½ ft.....			60 6 00
2 to 2½ ft.....			75 7 50
Bumalda, Anthony Waterer. A trifle taller than the preceding. Crimson flowers. 1 to 1½ ft. 2 to 2½ ft.....			60 6 00 75 7 50
Thunbergi. Snow-white flowers in early spring. Feathery foliage. 2 to 3 ft.....			60 6 00
Van Houttei. <i>Bridal Wreath.</i> The most graceful of all shrubs, completely covered with clusters of pure white flowers during May. 2 to 3 ft.....			60 6 00 75 7 50
SYMPHORICARPOS racemosa. <i>Snowberry.</i> Showy white waxy berries until midwinter. 2 to 3 ft.....			60 6 00
vulgaris. <i>Coral Berry.</i> Drooping branches, bearing red berries from midsummer until winter. 2 to 3 ft.....			60 6 00
3 to 4 ft.....			75 7 50
SYRINGA persica. <i>Persian Lilac.</i> Slender branches. Lilac flowers of medium size. 3 to 4 ft. .			75 7 50
villosa. <i>Himalayan Lilac.</i> Pink flowers in large panicles. 3 to 4 ft.....			75 7 50
vulgaris. The popular purple Lilac which does well everywhere. 2 to 3 ft.....			60 6 00
3 to 4 ft.....			75 7 50
vulgaris alba. The common white variety; equally good. 2 to 3 ft. 3 to 4 ft.....			60 6 00 75 7 50

CHOICE FLOWERING SHRUBS, continued

Hybrid Lilacs

Congo. Single. Wine-red. Very handsome. 2 to 3 feet. \$1 each, \$10 per doz.

Souv. de Ludwig Spæth. Single. Very large individual flowers of dark purplish red in heavy panicles. 2 to 3 feet. \$1 each, \$10 per doz.

Miss Stepman. A fine double white variety. 2 to 3 feet. \$1 each, \$10 per doz.

VIBURNUM Carlesi. Clusters of Each Doz.
white flowers, tinted pink at center, delightful arbutus fragrance. 2 to 3 ft. \$2 00

Opulus. High-Bush Cranberry. Tall-growing bush with showy fruit resembling cranberries. White flowers in spring.
2 to 3 ft. 60 \$6 00
3 to 4 ft. 75 7 50

Opulus nanum. Dwarf Cranberry Bush. Dwarf; useful for forming low hedges. 1 to 1½ ft. 60 6 00
2 ft. 75 7 50

plicatum. Japanese Snowball.
2 to 3 ft. 75 7 50

VACCINIUM corymbosum. High-Bush Huckleberry. Valued for its fruit. It is even more desirable as an ornamental plant as the leaves assume gorgeous colors in autumn.
2 to 3 ft. \$0 75 \$7 50
3 to 4 ft. 1 00 10 00
5 to 6 ft. 4 00 40 00

WEIGELA candida. White Weigela. Vigorous grower. White flowers in June.
3 to 4 ft. 60 6 00
rosea. A pretty pink form.
3 to 4 ft. 60 6 00
hybrida, Eva Rathke. The best Weigela. Carmine-crimson flowers. Medium height.
2 to 3 ft. 60 6 00
3 to 4 ft. 75 7 50
nana variegata. Pretty white and green leaves. Dwarf habit.
2 to 3 ft. 60 6 00
3 to 4 ft. 75 7 50

Hedge Plants

25 or more of a kind at the 100 rate

BARBERRY, Japanese (Berberis Thunbergi). An ironclad hedge plant entirely immune from disease.
9 to 12 in., light. \$1 50 \$10 00
12 to 18 in., heavy. 2 50 20 00
18 to 24 in., heavy. 3 50 25 00

PRIVET, California. Perhaps the most popular hedge plant, but not entirely dependable in severe climates.
1½ to 2 ft. 1 25 8 00
2 to 2½ ft. 1 50 10 00
2½ to 3 ft. 1 75 12 00
3 to 4 ft. 2 00 15 00

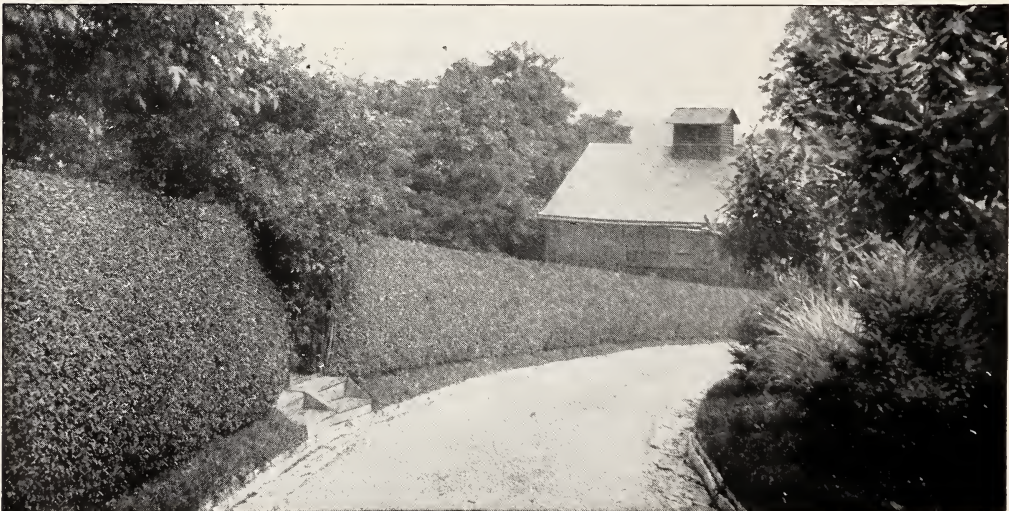
Amoor River. A splendid hedge plant, entirely hardy and dependable.

Prices of Amoor River Privet
Doz. 100
1½ to 2 ft., bushy. \$2 00 \$15 00
2 to 2½ ft., bushy. 3 00 20 00
2½ to 3 ft., bushy. 3 50 25 00

Privet, Ibota. Branches arch gracefully. Flowers white. Desirable for informal hedging or for grouping.
1½ to 2 ft. 2 50 18 00
2 to 3 ft. 3 00 22 00

Regel's. Spready growth. Very hardy. 2 to 2½ ft. 4 00 30 00

Ibodium. A new hybrid kind, with the rich glossy leaf and luxuriant growth of the California Privet, and entirely hardy.
1½ to 2 ft., bushy. 3 00 20 00
2½ to 3 ft. Very bushy plants. 4 00 25 00
3 to 4 ft., very bushy. 5 00 35 00



Hedge of Amoor River Privet

Shade and Flowering Trees



WEeping MULBERRY

ACER platanoides. <i>Norway Maple.</i>	Each	Doz.
10 to 12 ft.....	\$5 00	\$50 00
12 to 14 ft.....	7 50	75 00
15 to 18 ft.....	10 00	100 00
Larger specimens.....	\$15 to 25 00	
saccharum. <i>Sugar Maple.</i>		
10 to 12 ft.....	5 00	50 00
12 to 14 ft.....	7 50	75 00
15 to 18 ft.....	10 00	100 00
Larger specimens.....	\$15 to 25 00	
ÆSCULUS carnea. <i>Red-flowering Horse-Chestnut.</i>	12 to 14 ft..	5 00
BETULA alba. <i>White Birch.</i>	4 to 5 ft.	3 50 35 00
papyrifera. <i>Canoe or Silver Birch.</i>		
4 to 5 ft.....	1 50	15 00
6 to 8 ft.....	3 00	30 00
CATALPA Bungei. <i>Round-headed Catalpa.</i>	2-yr. heads.....	2 50 25 00
Heavy.....	4 00	40 00
CERASUS japonica pendula. <i>Japanese Weeping Cherry</i>		6 00
CORNUS florida. <i>White-flowering Dogwood.</i>	5 to 6 ft.....	3 00 30 00
6 to 8 ft.....	5 00	50 00
Larger specimens.....	\$7.50 to 15 00	
florida rubra. <i>Pink-flowering Dogwood.</i>	3 to 4 ft.....	3 50 35 00
MULBERRY, Teas' Weeping		4 00
Specimens.....		7 50
POPULUS fastigiata. <i>Lombardy Poplar.</i>		
6 to 8 ft.....	75	7 50
8 to 10 ft.....	1 25	12 50
10 to 12 ft.....	2 00	20 00
QUERCUS coccinea. <i>Scarlet Oak.</i>	8 to 10 ft.....	4 00 40 00
palustris. <i>Pin Oak.</i>		
8 to 10 ft.....	5 00	50 00
10 to 12 ft.....	7 50	75 00
rubra. <i>Red Oak.</i>	8 to 10 ft.....	4 00 40 00
10 to 12 ft.....	5 00	50 00
SALIX pentandra. <i>Laurel-leaved Willow.</i>	Glossy leaves. Excellent for screening.	
3 to 4 ft.....	50	5 00
5 to 6 ft., bushy.....	75	7 50
6 to 8 ft.....	1 00	10 00

ULMUS americana. <i>American Elm.</i>	Each	Doz.
8 to 10 ft.....	\$2 00	\$20 00
10 to 12 ft.....	3 00	35 00
14 to 15 ft.....	5 00	50 00

Flowering Crab-Apples

MALUS atrosanguinea. <i>Carmine Crab.</i>	Small tree with a mass of pretty carmine tinted blossoms. 5 to 6 ft.....	3 00	30 00
floribunda. <i>Japanese Flowering Crab.</i>	Bright pink flower-buds; white flowers, followed by red fruit. 5 to 6 ft.....	3 00	30 00
Ioensis plena. <i>Bechtel's Crab.</i>	Double-flowering Crab. Soft pink, double flowers resembling roses. Quite fragrant. 4 to 5 ft.....	2 50	
Niedzwetzkyana. <i>Red-vein Crab.</i>	Deep pink flowers. Remarkable for the purplish color of leaves, branches, and fruit. 4 to 5 ft.....	3 00	30 00
prunifolia. <i>Pear-leaf Crab.</i>	A rare Asiatic variety. Attractive fruits, yellow with red cheek. 5 to 6 ft.....	3 00	30 00
robusta. <i>Cherry Crab.</i>	Large, white, sweet-scented flowers, early blossoming. 5 to 6 ft...	3 00	30 00
spectabilis. <i>Chinese Flowering Crab.</i>	Delicate rosy pink flowers, shading to white. Very fragrant. 5 to 6 ft.....	3 00	30 00



Double-Flowering Crab-Apple Blossoms

Vines

	Each	Doz.		Each	Doz.
AMPELOPSIS quinquefolia. <i>Virginia Creeper.</i> The well-known Woodbine, with red or scarlet foliage in fall. 2-yr.	\$0 40	\$4 00	Euonymus radicans. <i>Climbing Euonymus.</i> Evergreen foliage. Clings tightly to stone-work or tree trunks. 3-yr.	\$0 50	\$5 00
Veitchii. <i>Boston Ivy.</i> The best vine for covering walls. 2-yr.	75	7 50	radicans minima (<i>E. kewensis</i>). Very minute dark green leaves. Useful for rock-work or pedestals where moderate growth is desired. 3-inch pots.	35	3 50
3-yr.	1 00	10 00	radicans variegata. A form of the above kind with showy white and green leaves. 3-yr.	50	5 00
ARISTOLOCHIA Siph. <i>Dutchman's Pipe.</i> Broad, dark green leaves. Rapid growth. Strong plants.	1 00	10 00	5-yr.	75	7 50
CELASTRUS scandens. <i>American Bittersweet.</i>	50	5 00	HEDERA helix. The well-known English Ivy. 1½ to 2 feet high.	50	5 00
CLEMATIS paniculata. <i>Japanese Virgin's Bower.</i> Entirely covered with small, white, sweetly scented flowers in late summer. Just the time when little else is in flower. 2-yr.	50	5 00	LONICERA Halliana. <i>Hall's Honeysuckle.</i> Very fragrant. 2-yr.	50	5 00
3-yr.	75	7 50	3-yr.	75	7 50
EUONYMUS arborescens. <i>Evergreen Bittersweet.</i> Glossy evergreen leaves and very hardy. Fine for rough stone-work. 3-yr.	75	7 50	TECOMA radicans. <i>Trumpet Vine.</i> 3 to 4 ft.	75	7 50
			WISTERIA sinensis. <i>Purple Wisteria.</i> 3 to 4 ft.	75	7 50
			sinensis alba. <i>White Wisteria.</i> 3 to 4 ft.	75	7 50

Evergreens

The demand for Evergreens for foundation planting is rapidly increasing. Evergreens are attractive winter or summer. Select the kinds adapted for this purpose, prune or shear at intervals, and they may be regarded as permanent.

NOTE.—Varieties preceded with * will develop into large trees, and should not be located near buildings but grouped separately or as specimens where their proper development will not be hampered.

	Each	Doz.		Each	Doz.
* ABIES balsamea. <i>Balsam Fir.</i> 1½ to 2 ft.	\$2 50	\$25 00	Chamaecyparis pisifera aurea. Attractive golden form of preceding. 1½ to 2 ft.	\$2 50	
2 to 2½ ft.	3 00	30 00	2½ to 3 ft.	4 00	
* concolor. <i>Colorado Silver Fir.</i> Bluish green. Preferred by some to the more conspicuous Blue Spruce. 1½ to 2 ft.	3 50	35 00	plumosa. <i>Plume Cypress.</i> 1½ to 2 ft.	2 50	
2½ to 3 ft.	5 00	50 00	2 to 2½ ft.	4 00	
CHAMAECYPARIS (Retinospora)			3 to 4 ft.	6 00	
filifera. <i>Thread-branched Cypress.</i> 1½ to 2 ft.	3 00	30 00	plumosa aurea. <i>Golden Plume Cypress.</i> 1½ to 2 ft.	2 50	
2 to 2½ ft.	4 00	40 00	2 to 2½ ft.	4 00	
6 to 8 ft.	15 00		plumosa squarrosa. <i>Veitch's Moss Retinospora.</i> Broad, dense growth; steel-gray foliage. Fine for contrasting. 1 to 1½ ft.	2 50	
filifera aurea. <i>Golden Thread-branched Cypress.</i> 1½ ft.	4 00	35 00	2 to 2½ ft.	5 00	
obtusa. <i>Japanese Cypress.</i> 1½ to 2 ft.	2 50	25 00	JUNIPERUS chinensis alba		
6 to 8 ft.	15 00		variegata. An interesting white-tipped form. 12 to 15 in.	2 50	\$25 00
obtusa erecta. Oval-shaped outline; dense growth and compact habit. Very desirable. 1 to 1½ ft.	3 50	35 00	15 to 18 in.	3 50	35 00
1½ to 2 ft.	5 00	50 00	chinensis Pfitzeriana. <i>Pfitzer's Juniper.</i> Very hardy kind, of spreading habit. Attractive silver-green foliage. One of the best for foundation planting. 1 to 1½ ft.	2 50	
obtusa nana. A dwarf, compact variety. Fine for rock-work. 6 to 9 in.	2 50	25 00	1½ to 2 ft.	3 50	
9 to 12 in.	4 00	40 00	2 to 2½ ft.	5 00	
obtusa Youngii (aurea). Graceful, loose grower. Young growth, golden yellow. 1½ to 2 ft.	3 50	35 00	2½ to 3 ft.	6 00	
pisifera. <i>Sawara Retinospora.</i> Slender, light green branches. Rapid grower. 1½ to 2 ft.	2 50		communis. <i>Common Juniper.</i> 1½ to 2 ft.	2 50	25 00
3 to 3½ ft.	5 00		3 to 3½ ft.	4 00	40 00

EVERGREENS, continued

	Each	Doz.
Juniperus communis hibernica. <i>Each</i>		
<i>Iris Juniper.</i> Slender, upright habit.		
1 to 1½ ft.	\$1 50	\$15 00
2 to 2½ ft.	3 00	30 00
excelsa stricta. <i>Greek Juniper.</i>		
Compact, conical. Foliage gray-green, changing to steel-blue in winter.		
12 to 15 in.	2 00	
15 to 18 in.	3 00	
Sabina. <i>Savin Juniper.</i> Low, spreading habit.		
1 to 1½ ft.	1 50	15 00
1½ to 2 ft.	2 50	25 00
2 to 2½ ft.	4 00	40 00
sabina horizontalis. <i>Creeping Juniper.</i> A creeping form, useful for rock-work or as a ground-cover.		
15 to 18-in. spread.	2 50	25 00
18 to 24-in. spread.	3 50	35 00
virginiana. <i>Red Cedar.</i>		
3 to 4 ft.	3 50	35 00
5 to 6 ft.	6 00	60 00
7 to 8 ft.	12 00	
virginiana glauca. <i>Blue Cedar.</i> Handsome blue form.		
2 to 2½ ft.	5 00	50 00
*PICEA excelsa. <i>Norway Spruce.</i> We can supply these sizes in trees suitable for hedges or windbreaks at a lower price.		
1½ to 2 ft.	1 50	
2 to 2½ ft.	2 00	
2½ to 3 ft.	2 50	
*pungens Kosteri. <i>Koster's Colorado Blue Spruce.</i> The deepest blue form. 2½ to 3 ft.	15 00	
Specimens, 8 to 10 ft. ...	\$35 to 45	00
*PINUS nigra austriaca. <i>Austrian Pine.</i> 2 to 2½ ft.	3 00	
2½ to 3 ft.	3 50	

	Each	Doz.
Pinus montana. <i>Swiss Mountain Pine.</i> Slow-growing; spreading habit. 1 to 1½ ft.	\$2 50	
1½ to 2 ft.	3 50	
montana Mughus. <i>Mugbo Pine.</i> The true compact type.		
1 to 1½ ft.	3 50	\$35 00
1½ to 2 ft.	5 00	50 00
resinosa. <i>Red or Norway Pine.</i> Rich, dark green foliage; vigorous growth. 6 to 8 ft. ...	8 00	
9 to 10 ft.	10 00	
*Strobis. <i>White Pine.</i>		
1½ to 2 ft.	1 50	
2 to 2½ ft.	2 00	
2½ to 3 ft.	3 00	
*sylvestris. <i>Scotch Pine.</i>		
1½ to 2 ft.	2 00	
2 to 2½ ft.	3 00	
2½ to 3 ft.	3 50	
*PSEUDOTSUGA Douglasii.		
<i>Douglas Spruce.</i> 1 to 1½ ft. ...	2 50	
1½ to 2 ft.	3 00	
TAXUS canadensis. <i>Canadian Yew.</i> Dwarf, spreading habit. Prefers shade. 1 to 1½ ft. ...	2 50	25 00
cuspidata. Close upright growth; dark green, glossy foliage. Splendid as a specimen or for hedging. Entirely hardy.		
1 to 1½ ft.	3 00	30 00
cuspidata brevifolia. <i>Dwarf Japanese Yew.</i> Dark green foliage. Does well in sun or partial shade. Fine for low hedges or foreground planting. Slow growing.		
1½ to 2 ft.	5 00	50 00
2 to 2½ ft.	7 50	75 00
repandens. Spreading habit. Does well in shade.		
12 to 15 in.	3 50	35 00



Evergreens make attractive plantings around the home

EVERGREENS, continued

THUYA occidentalis. <i>Arborvitæ.</i> Each	Doz.	
Very hardy and useful for architectural effect or for forming dense but not spready, hedges or screens. Effective either winter or summer.		
2 to 3 ft.	\$3 00	
3 to 4 ft.	3 50	
6 to 8 ft.	8 00	
8 to 10 ft.	12 00	
occidentalis Douglasii pyramidalis (spiralis). Erect, pyramidal habit; peculiarly twisted foliage. 2½ to 3 ft..	3 50	\$35 00
3 to 3½ ft.	4 00	40 00
occidentalis globosa.		
12 to 15 in.	1 50	
15 to 18 in.	2 00	
18 to 24 in.	3 00	
occidentalis Hoveyi. A dwarf form of conical growth.		
12 to 15 in.	1 50	15 00
15 to 18 in.	2 00	20 00
occidentalis lutea, George Peabody. A handsome golden form of above. 1 to 1½ ft.	2 50	
2½ to 3 ft.	4 00	
occidentalis nana. <i>Little Globe Arborvitæ.</i> A dwarf dense form of the preceding.		
9 to 12 in.	1 50	
12 to 15 in.	2 00	

Thuya occidentalis pyramidalis. <i>Pyramidal Arborvitæ.</i> Erect, pyramidal form, of compact growth.	Each	Doz.
15 to 18 in.	\$1 50	
18 to 24 in.	2 00	
occidentalis Wareana (sibirica). <i>Siberian Arborvitæ.</i> Dark green foliage; slow pyramidal growth and semi-dwarf. Very hardy.		
15 to 18 in.	2 50	\$25 00
18 to 24 in.	3 50	35 00
occidentalis Woodwardi. Dark green foliage. The best kind of compact globe form.		
1½ to 2 ft., heavy specimens ...	5 00	
orientalis (Biota). <i>Oriental Arborvitæ.</i> A rapid-growing, shapely evergreen of pyramidal habit. Attractive light green foliage.		
1½ to 2 ft.	1 50	15 00
2 to 2½ ft.	2 50	25 00
*TSUGA canadensis. <i>Canadian Hemlock.</i> 1½ to 2 ft.	3 00	30 00
2½ to 3 ft.	4 00	40 00
3½ to 4 ft.	6 00	60 00
4 to 5 ft.	7 50	75 00
5 to 6 ft.	10 00	
7 to 8 ft.	15 00	

Evergreen Shrubs

ANDROMEDA floribunda. <i>Japanese Fetter Bush.</i> Dense foliage; white feathery flowers.	Each	Doz.
12 to 15 in.	\$3 00	\$30 00
japonica. A Japanese sort of more vigorous habit. 15 to 18 in.	2 25	22 50
AZALEA amœna. <i>Hardy Japanese Azalea.</i> Showy crimson flowers. 12 to 15 in.	2 50	25 00
Hinodigiri. An improved kind; bright glowing crimson. Very fine. 12 to 15 in.	3 50	35 00

Azalea cotoneaster horizontalis. <i>Rock Cotoneaster.</i> A charming low evergreen shrub of spready habit, glossy leaves, and showy red berries. 9 to 12 in.	Each	Doz.
Small plants from 3-in. pots.	\$1 50	\$15 00
	60	6 00
DAPHNE Cneorum. <i>Garland Flower.</i> Sweetly scented pink flowers. 2-yr.	1 00	10 00
EUONYMUS. See Vines.		
KALMIA latifolia. The well-known Mountain Laurel. 1½ to 2 ft.	2 50	25 00
2½ to 3 ft.	3 50	35 00
3 to 4 ft.	7 50	
Specimens 4½ to 5-ft. spread.	\$10 to 15 00	
RHODODENDRON maximum. <i>Great Laurel.</i> The best for massing in deep shade.		
1½ to 2 ft.	2 50	25 00
2 to 2½ ft.	3 50	35 00
catawbiense. <i>Catauba Rhododendron.</i> Rosy purple. Very hardy. 1½ to 2 ft.	3 00	30 00
2 to 2½ ft.	4 00	40 00
carolinianum. A new variety from the Carolinas. Pink flowers; quite hardy.		
1 to 1½ ft.	2 00	20 00
2 to 2½ ft.	4 00	40 00
Hybrids. These can be supplied in White, Pink, Lavender, and Red. 2 to 2½ ft.	5 00	50 00
2½ to 3 ft.	7 00	70 00



Rhododendrons

Fruit Trees

Many people with limited garden space find it advisable to plant a few fruit trees for shade purposes as well as for fruit. All fruit trees are highly ornamental when in bloom.

Our stock of fruit trees is extensive. They are well-grown, hardened to the New England climate and adapted to either the small home fruit-garden or large commercial plantings.

Many varieties are carried in special early fruiting size, which with proper care in planting and cultivation, will come into bearing earlier than the trees of the size usually sent out. The varieties which we can supply in this larger size are indicated in the following lists by a *.

NOTE.—When Fruit Trees are required in quantities of more than 100, write us for special prices.

NEW APPLE, THE CORTLAND

A valuable new Apple that will appeal both to the amateur and commercial grower. It is the result of a cross between Ben Davis and McIntosh. The fruit has the delicious flavor of the McIntosh as well as the firm, crisp, white flesh. The color is even more attractive—a deep red—and its keeping qualities are superior to McIntosh. All the requirements of a first-class table Apple. Stock very limited. Strong, 1-yr. whips, \$1 each.

NEW PLUM, IMPERIAL EPINEUSE

This attractive new reddish purple Plum is remarkable for its deliciously sweet flavor. Fruit is large and ripens in late midseason. It is very productive and has made a splendid showing at the Geneva Experiment Station. A fine table Plum which is, we believe, destined to be much in demand when better known. A large fruit grower considers this the best Plum grown. Strong, 2-yr. trees, \$2 each.

Apples

5 to 7 ft. tall, $\frac{11}{16}$ -in. diam. and up, 75 cts. each, \$7.50 per doz., \$50 per 100

NOTE.—Varieties are arranged approximately in the order of ripening.

Varieties marked * in extra-large size at \$2 each, \$20 per doz.

EARLY

Yellow Transparent. Yellow.
Sweet Bough. Yellow.
Astrachan Red. Red.

MIDSEASON

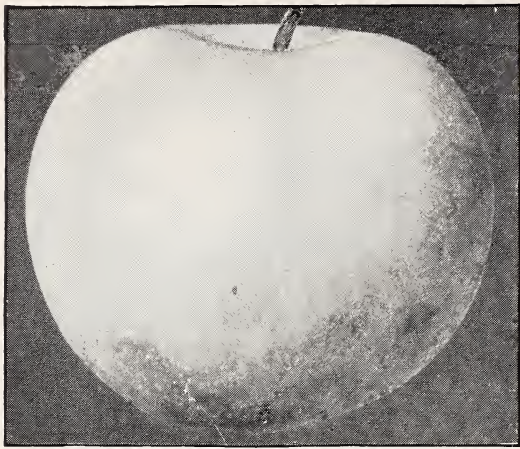
Gravenstein. Striped.
Fall Pippin. Yellow
***McIntosh Red.** Red.

LATE

***Delicious.** Striped.
***R. I. Greening.** Green.
***Northern Spy.** Red.
***King.** Red.
Tolman Sweet. Yellow.
***Baldwin.** Red.
***Wagener.** Red.
***Roxbury Russet.** Russet.



Belle of Georgia Peach. See page 22



Yellow Transparent Apple. See page 21

Dwarf Apples

Dwarf Apples are the standard kinds budded on a small rooting stock, the process having a tendency to restrict or dwarf the top growth. Dwarf trees commence fruiting earlier, bear larger fruit, and where space is limited, will produce more fruit than the standard Apples; because you can have more trees, space the trees 12 to 15 feet apart in the garden, or 6 to 8 feet as a hedge-row.

Varieties offered in Dwarf form:

Price \$1.25 each, \$12 per doz.

Red Astrachan.

Delicious.

Fall Pippin.

McIntosh Red.

Rhode Island Greening.

Crab-Apples

75 cts. each, \$7.50 per doz., \$50 per 100

Hyslop. Red. ***Transcendent.** Striped.

Peaches

	Each	Doz.	100
5 to 6 ft.....	\$0 50	\$5 00	\$35 00

Greensboro. White.	Belle of Georgia. Mid-season; white.
Rochester. Yellow.	Elberta. Yellow.
Carman. Early; white.	Hale. Yellow; freestone.
Champion. White.	Crawford Late. Yellow.
Hiley. Early; white.	

NOTE.—It is important to prune back Peaches to the stem before planting.

Quinces

5 to 6 ft., \$1.25 each, \$12 per doz., \$85 per 100

Champion **Orange**

Plums

	Each	Doz.
5 to 6 ft.....	\$1 50	\$15 00

JAPANESE	EUROPEAN
Red June. Red.	Lombard. Purple.
Abundance. Red.	Bradshaw. Blue.
Burbank. Red.	German Prune. Blue.

Cherries

6 to 7 ft., \$1.50 each, \$15 per doz.

SWEET

Gov. Wood. (Oxheart). Red on white.
Black Tartarian. (Oxheart). Black.
Windsor Dark.
Yellow Spanish. White.

SOUR

Early Richmond. Red.
Montmorency. Red.
English Morello. Red.

Pears

	Each	Doz.	100
6 to 7 ft.....	\$1 25	\$12 00	\$85 00

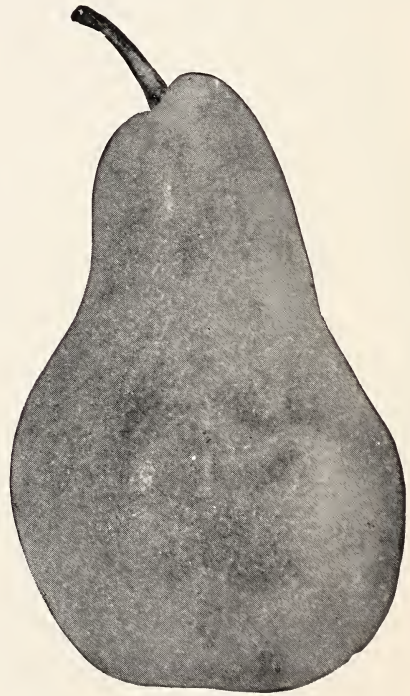
Clapp's Favorite. Summer.
***Bartlett.** Summer.
***Seckel.** Fall.
***Beurre Bosc.** Fall.
Beurre d'Anjou. Fall.
***Sheldon.** Fall.
Lawrence. Winter.

Pedigreed Washington Asparagus

Strong heavy dark green shoots. Tips are tight and firm and do not open out or branch until well out of the ground. The finest table or market asparagus, and practically rust-proof. 50 cts. per doz., \$3 per 100, \$20 per 1,000.

Rhubarb linnaeus

Bright red stalks, splendid flavor. Good clumps, 25 cts. each, \$2.50 per doz. Extra heavy clumps, 50 cts. each, \$5 per doz.



Bartlett Pear



Fruit Garden

Small Fruits

GRAPE-VINES. Each Doz. 100
 2-yr., first size.....\$0 35 \$3 50 \$25 00

Agawam. Red.	Moore's Early. Black.
Brighton. Red.	Niagara. White.
Concord. Black.	Worden. Black.
Catawba. Red.	

Caco. A Catawba-Concord cross, ripening somewhat in advance of the Concord Grape. Compared with Concord, it is fully as vigorous and rapid in growth and is very hardy. Fruit color is a sparkling wine red with attractive bloom. Medium to large sized berries are carried in large bunches and are produced very freely. It has the delicious flavor of the Catawba, but can be eaten before fully ripe. Price, 75 cts. each, \$7.50 per doz.

CURRENTS. Each Doz. 100
 2-yr., first size.....\$0 35 \$3 50 \$25 00

Wilder. Red.	White Grape. White.
Perfection. Red.	

GOOSEBERRIES. Each Doz. 100
 2-yr., first size.....\$0 50 \$4 50 \$30 00

Downing. Red.	Pearl. White.
Red Jacket. Red.	

BLACKBERRIES Doz. 100
 Snyder Eldorado Blowers \$1 25 \$6 00



Caco Grape

RASPBERRIES	Doz.	100
	\$1 25	\$6 00
RED	BLACK	PURPLE
Perfection	Cumberland	Columbian
Cuthbert	Plum Farmer	
Erskine Park	(Everbearing).	



Hardy Plant Section, Bristol Nurseries



THE NEW ROSE, MARY WALLACE
Described on page 13

THE BRISTOL NURSERIES
INCORPORATED
BRISTOL • CONNECTICUT