







542
S4
Vd. 3
GNT.
C-2

Die Gross-Schmetterlinge der Erde

== Eine systematische Bearbeitung ==
der bis jetzt bekannten Gross-Schmetterlinge

In Verbindung mit namhaftesten Fachmännern herausgegeben

Von

Prof. Dr. Adalbert Seitz

I. Abt. 3. Band: Die palaearktischen Eulen.

Tafeln.



STUTTGART

Verlag des Seitz'schen Werkes (Alfred Kernen)

1914.

Alle Rechte vorbehalten.

CANCELLED
CANCELLED



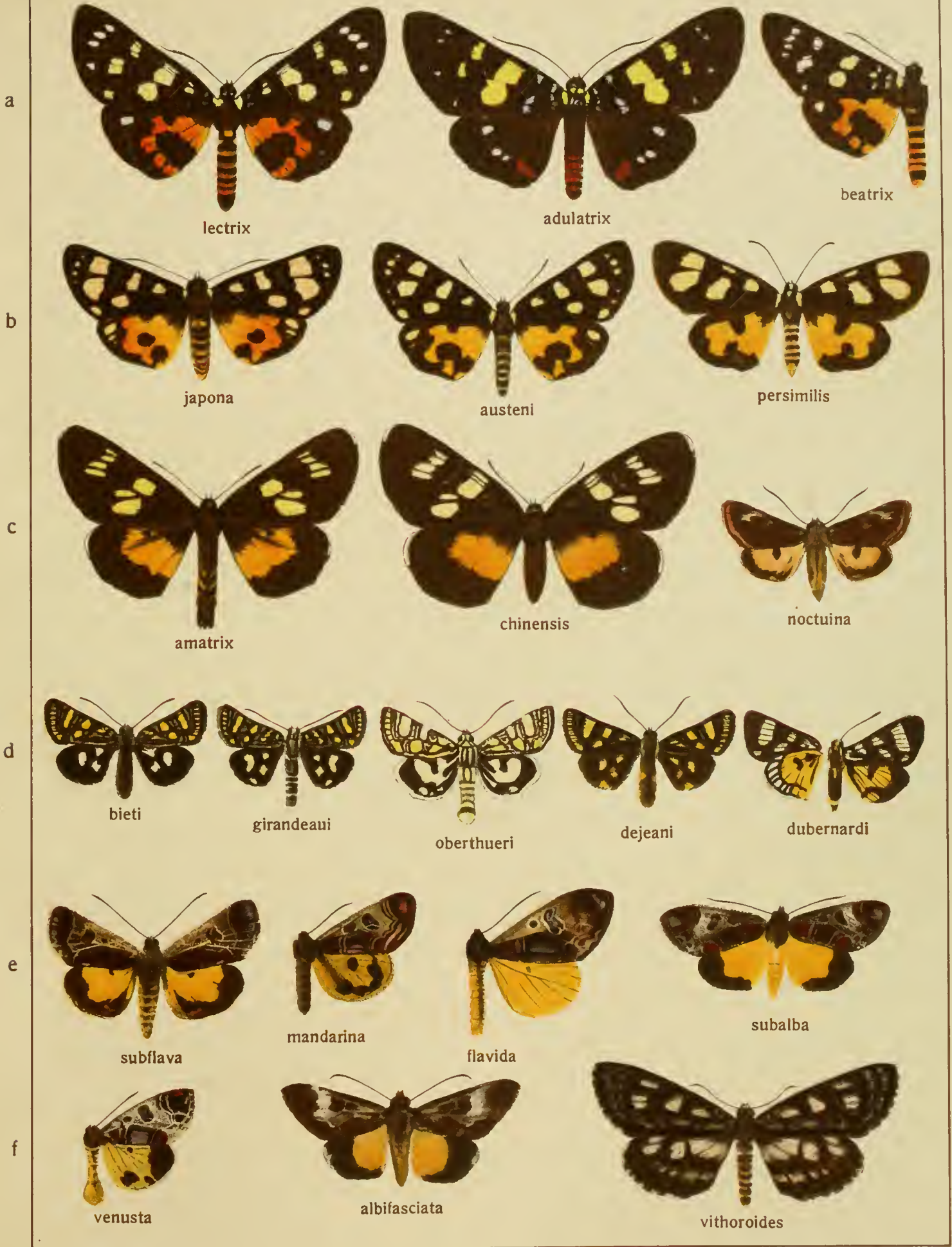
3. Band

Inhalts-Verzeichnis der Tafeln.

Die beige-setzten Ziffern bezeichnen die Tafeln.

Episteme 1	Epia 20, 21	Dasystemum 34, 35	Lithomoia 42
Chelonomorpha 1	Cardepia 21	Dasythorax 28, 35	Pulcheria 42
Mimeusemia 1	Trichoclea 20, 21	Eupsilia 35	Antha 42
Scrobigera 1	Manobia 20, 21	Epiglaea 35	Rhabinopteryx 42
Syfaia 1	Lasianobia 20	Orbona 35	Epimecia 42
Asteropetes 1	Lasiestra 20, 21	Xantholeuca 35	Fergana 42
Zalissa	Lasionycta 20, 21	Conistra 35, 36	Stilbia 42
Ophthalmis 1	Hadula 20, 21	Omphaloscelis 36	Praestilbia 48
Panthea 2	Tiracola 21	Spudaea 36	Hypostilbia 42, 48
Moma 2	Hyssia 20, 21	Orrhodiefla 28	Amphyrina 42
Canna 2	Eriopygodes 21	Amathes 28, 36, 37	Prodenia 12
Daseochaeta 2	Monostola 20, 21	Atethmia 28	Spodoptera 42
Diphtherocome 2	Xylomania 20, 21	Cosmia 21, 28	Laphygma 48
Diphthera 2	Perigrapha 21	Telorta 28	Athetis 42, 45, 48
Colocasia 2	Monima 20—22	Perinaenia 38	Prometopus 18
Oxycesta 2	Clavipalpus 22	Pyrois 38	Acosmetia 45, 48
Eogena 2	Brithys 20	Amphipyra 38, 39	Petilampa 45
Euromioia 2	Cerapteryx 20	Gracilipalpus 42	Dysmilichia 45
Simyra 2	Hyperiodes 23, 24	Stygiostola 38	Proxenus 45, 48
Arsilonche 2	Hyphilare 23, 24	Orthogonia 38, 39	Radinogoes 45, 48
Leiometopon 2	Sideridis 23—25	Mania 39, 41	Haemassia 45
Acronieta 2, 3, 75	Meliana 25	Dipterygia 38	Galgula 50
Chamaepora 3	Brachygalea 28	Parastichtis 39, 40	Balsa 48
Anacronieta 3	Cucullia 26—28	Oligia 40—42	Psilomonodes 45
Panthauma 4	Copieucullia 29	Eremobia 41	Condica 45
Xanthomantis 4	Cheligalea 29	Gerbathodes 41, 42	Propsalta 18, 45
Metachrostis 4	Argyromata 29	Atrachea 41	Scioptila 17
Euxoa 5—7, 12, 15, 18	Lophoterges 28	Crymodes 41, 42	Perigea 47
Rhyacia 6—13, 15, 21	Callierges 24	Sidemia 41, 42	Hadjina 47
Nyssoenemis 13	Copiphana 21	Phoebophilus 11, 42	Xylomoia 47
Epigena 13	Metopoceras 24, 28	Heterographa 41	Catamecia 47
Hermonassa 13, 15	Ammetopa 24	Heteromma 41	Namangana 47
Amphitrota 15	Amephana 24	Heraema 41	Gortyna 46
Perissandria 13	Omphalophana 21, 28, 29	Margelana 41	Apamea 46
Xestia 13, 15	Calophasia 24, 28, 29	Eremopola 41	Xanthoecia 46
Aplectoides 13	Leucochlaena 28, 29	Centropodia 41	Hydroecia 46
Anomogyna 13, 14, 18	Ulochlaena 28, 29	Pseudopseustis 41	Brachyxanthia 46
Eurois 14	Derthisa 28, 29	Pseudohadena 41—43	Pyrrhia 46
Cerastis 14	Oncocnemis 28, 29	Luperina 43	Ipimorpha 46
Orthosia 14	Copitype 28	Lasiplexia 43	Meristis 46
Mythimna 14	Brachionycha 29	Pareuplexia 42	Dadica 46
Hypoxestia 14	Dasypolia 28, 29	Trachea 43	Strepselydna 46
Naenia 14	Bombycia 27, 30	Euplexia 43, 44	Elydna 46
Epilecta 14	Illia 28	Trigonophora 44	Radinacra 46
Triphaena 14, 15	Aporophyla 28, 30	Chutapha 44	Calymnia 47
Eueretagrotis 15	Chloantha 30	Habryntis 44	Pinacopius 47
Rhynchagrotis 15	Euscotia 30	Conservula 44	Metopoplus 47
Isochlora 15	Lithophane 28, 30, 31	Cobalos 44	Mycteroplus 47
Actinotia 15	Xylina 31	Oroplexia 44	Dicycla 47
Anhausta 12	Dichonia 31	Eriopus 42, 44	Enargia 18, 47—49
Blepharita 15	Thecophora 31	Telesilla 44	Phragmitiphila 49
Paraxestia 15	Dryobota 31	Callogonia 44	Rhizedra 49
Barathra 15	Meganephria 31, 32	Plusilla 44	Arenostola 49
Discestra 15	Calotaenia 32	Virgo 44	Archanara 49
Craterestra 15	Eumichtis 32	Harrisimemna 41	Coenobia 48
Scotogramma 12, 15	Crino 28, 32	Aucha 44	Nonagria 48
Haderonia 15	Agriopsis 32	Polyphaenis 42, 44	Oria 48
Polia 16—18	Lamprosticta 32	Triphaenopsis 42, 44	Argyropsila 48
Harmodia 17, 18	Crypsedra 32	Talpophila 44	Sesamia 48
Aplecta 19, 20	Dryobotodes 32, 33	Jambia 48	Calamia 48
Pachetra 19, 20	Valeria 33	Bryoleuca 48	Sphragifera 48
Hadena 19	Antitype 33, 34	Araea 48	Chasminodes 48
Tholera 19	Rhizotype 34	Chytonix 44, 48	Euterpia 48
Thargelia 20	Stenostigma 34	Stilbina 48	Synthymia 48
Odontelia 20	Bryomima 34, 34	Hypenthina 42, 48	Megalodes 48
Hypobarathra 20	Euxenistis 34	Pseudoligia 42	Paraegle 48
Conisania 21	Blepharidia 28, 34	Scotocampa 48	Metaegle 48
Onichestra 19	Dimya 34	Matopo 48	Aegle 48
Protonestra 20		Delta 42	Opsyra 48

- Protosendyra 48
 Heliocbeilus 50
 Chloridea 50
 Rhodoleptria 50
 Chariclea 50
 Aedophron 50
 Melicelptria 50
 Timora 51
 Adisura 51
 Hebdomochondra 51
 Erythrophaia 51
 Cladocerotis 50
 Anartomorpha 18, 50
 Schöyenia 18, 50
 Orosagrotis 50
 Grumia 50
 Oxytrypia 50
 Anarta 50
 Panolis 50
 Emia 50
 Sympistis 50
 Hypsophyla 50
 Cteipolia 50
 Heliobhis 50
 Pyrocleptria 50
 Xanthothrix 50
 Apaustis 50
 Panemeria 50
 Janthinea 50
 Stenoeccia 50
 Mieriantha 50
 Stemmaphora 50
 Omorphina 50
 Mesotrosta 50
 Micraeschus 51
 Penisia 51
 Polyorycta 51
 Leptosia 51, 52
 Glaphyra 51
 Eublemma 51
 Calymma 51
 Coccidiphaga 51
 Thalomicra 52
 Porphyrinia 51, 52
 Autoba 51
 Oruza 51
 Hyposada 51
 Soplita 52
 Corgatha 51
 Stenoloba 51, 52
 Xantholeuca 52
 Phyllophila 51
 Ozarba 51, 52
 Anyma 51
 Hattia 51, 52
 Berresa 51
 Maliattha 51, 52
 Hyperstrotia 52
 Lithacodia 52
 Micardia 22, 52
 Eustrotia 52
 Eulocastra 51, 52
- Thalerastria 52
 Naranga 51
 Metaemene 52
 Piammona 52
 Nothosterrha 52
 Erastria 52
 Tarache 52
 Hoplotarache 51, 52
 Eutelia 53
 Anuga 53
 Mimanuga 53
 Lophoptera 53
 Nycteola 53
 Sarrothrips 53
 Characoma 53
 Lamprothripa 53
 Eligma Bd. 2, Taf. 13
 Gadirtha 53
 Blenina 53
 Risola 53
 Sinna 53
 Gabala 53
 Siglophora 53
 Chionomera 53
 Tyana 53
 Earias 53
 Hylophila 53
 Hylophilina 53
 Parhylophila 60
 Cletrophora 53
 Carea 52
 Aiteta 52
 Hepatica 52
 Gelastocera 52
 Churia 52
 Kerala 52
 Macrochthonia 52
 Acontia 52
 Mormonia 54, 63
 Catocala 54—57, 63
 Ephesia 56, 57, 63
 Ulotrichopus 63
 Ecclita 58
 Entomogramma 58
 Cocytodes 58
 Agonista 58
 Nyctipao 58, 59, 75
 Patula 58
 Metopta 58
 Eumonodia 59, 60
 Speiredonia 59, 60
 Dermaleipa 60
 Artena 60
 Minucia 60, 63
 Anua 60, 61
 Pindara 61
 Ophiusa 61, 63
 Naxia 61
 Grammodes 61
 Calciopie 61
 Pelomia 61
 Remigia 61
- Cauminda 61, 63
 Ereheia 61
 Anisoneura 62
 Hypoglaucitis 62, 63
 Clytie 62, 63
 Alamis 62
 Pericyma 62
 Cortyta 62, 63
 Anydrophila 62
 Cerocala 62
 Leucanitis 62
 Leucomelas 62
 Gonospileia 62
 Caloplusia 64
 Autographa 61
 Syngrapha 61
 Phytometra 61, 75
 Phusidia 65
 Chrysoptera 65
 Abrostola 65
 Cosmophila 66
 Rusicada 66
 Scoliopteryx 52
 Ophideres 66
 Adris 66
 Monas 66
 Hulodes 66
 Ericeia 66
 Sypna 66, 67, 75
 Polydesma 67
 Pandesma 67
 Belciana 67
 Batracharta 67
 Erygia 67
 Capnodes 68, 70
 Diomea 70
 Apopestes 68
 Autophila 68
 Tathorhynchus 68
 Dinumma 67
 Toxocampa 68
 Exophila 68
 Chrysorithrum 68
 Arete 67
 Catephia 67
 Anophia 67
 Aedia 67
 Serrodes 68
 Hypaetra 68
 Lacera 68
 Oxyodes 68
 Ischyja 68
 Platyja 68
 Episparis 68
 Chrysopera 68
 Hamodes 68
 Blastacorhinus 69
 Azazia 69
 Hypospila 69
 Hypocala 69
 Calpe 69, 70
 Oraesia 69
- Deva 70
 Pasipeda 70
 Calesia 70
 Acantholipes 70
 Loxioda 70
 Dragana 70
 Brevipecten 70
 Scedopla 70
 Anumeta 70
 Aleucanitis 70
 Armada 70, 74
 Eremonoma 71
 Metopistis 71
 Marsipiophora 71
 Imitator 71
 Epharmottomena 71
 Metopomrhis 71
 Aethia 71
 Laspeyria 71, 74
 Colobochyla 71, 74
 Parascotia 71, 74
 Epizeuxis 71, 74
 Prothymia 71, 74
 Raparna 71, 74
 Hingula 71
 Orectis 74
 Paragona 71
 Chara 71, 74
 Rivula 71
 Araeognatha 71, 74
 Psimada 71
 Avitta 74
 Megazethes 71, 74
 Zethes 71
 Pangrapta 71, 74
 Tamba 74
 Lophomilia 71
 Lophograptia 71, 74
 Dierna 71
 Talapa 74
 Ectogonia 71, 74
 Megalocena 71, 74
 Pseudaglossa 71, 74
 Edessena 72
 Cidariplura 71, 74
 Simplicia 72
 Nodaria 72
 Zanclognatha 72, 74, 75
 Herminia 12, 72
 Pechipogo 72
 Badiza 74
 Bleptina 72, 74
 Bertula 72
 Hydrillodes 72
 Dichromia 72
 Rhynchina 72, 73, 75
 Rhynchodontodes 73
 Bomolocha 73, 75
 Hypena 73, 75
 Hypenodes 73
 Schrankia 73
 Aventiola 74







Pars I. Fauna palaeartica 3.





Pars I. Fauna palaeartica 3.



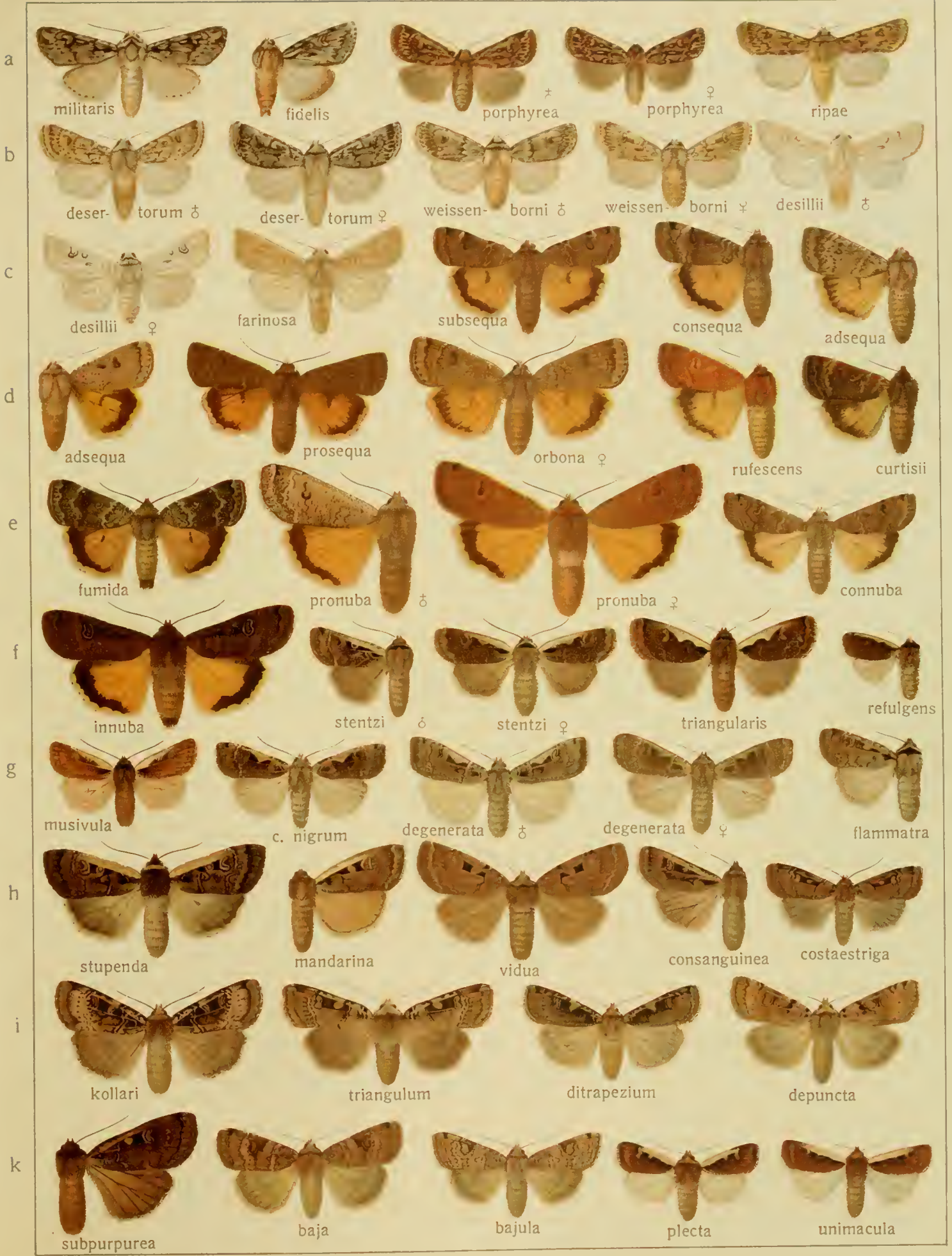
Pars I. Fauna palaeartica 3.



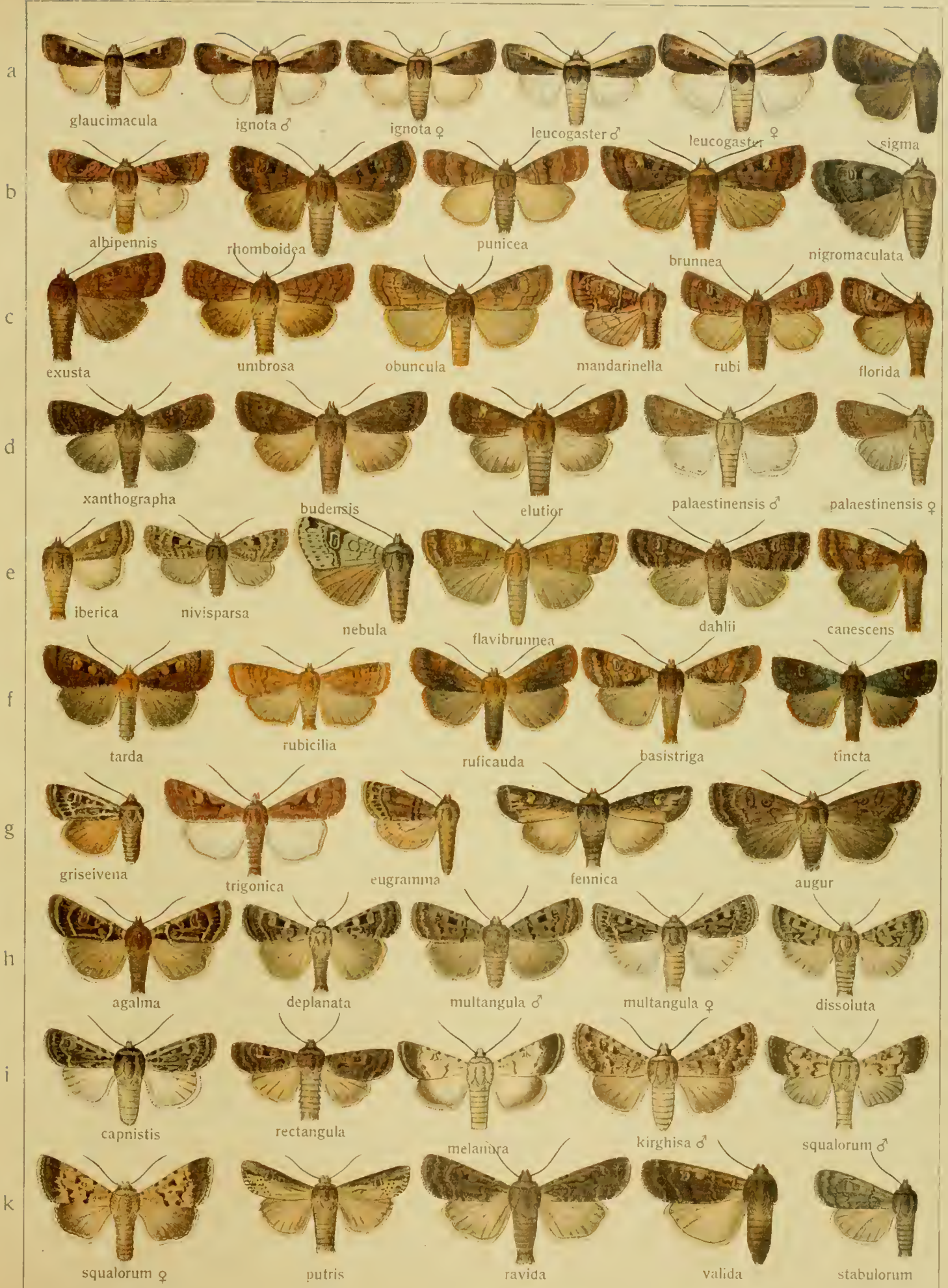
Pars I. Fauna palaeartica 3.



Pars I. Fauna palaeartica 3.



Pars I. Fauna palaeartica 3.



Pars I. Fauna palaeartica 3.



Pars I. Fauna palaeartica 3.



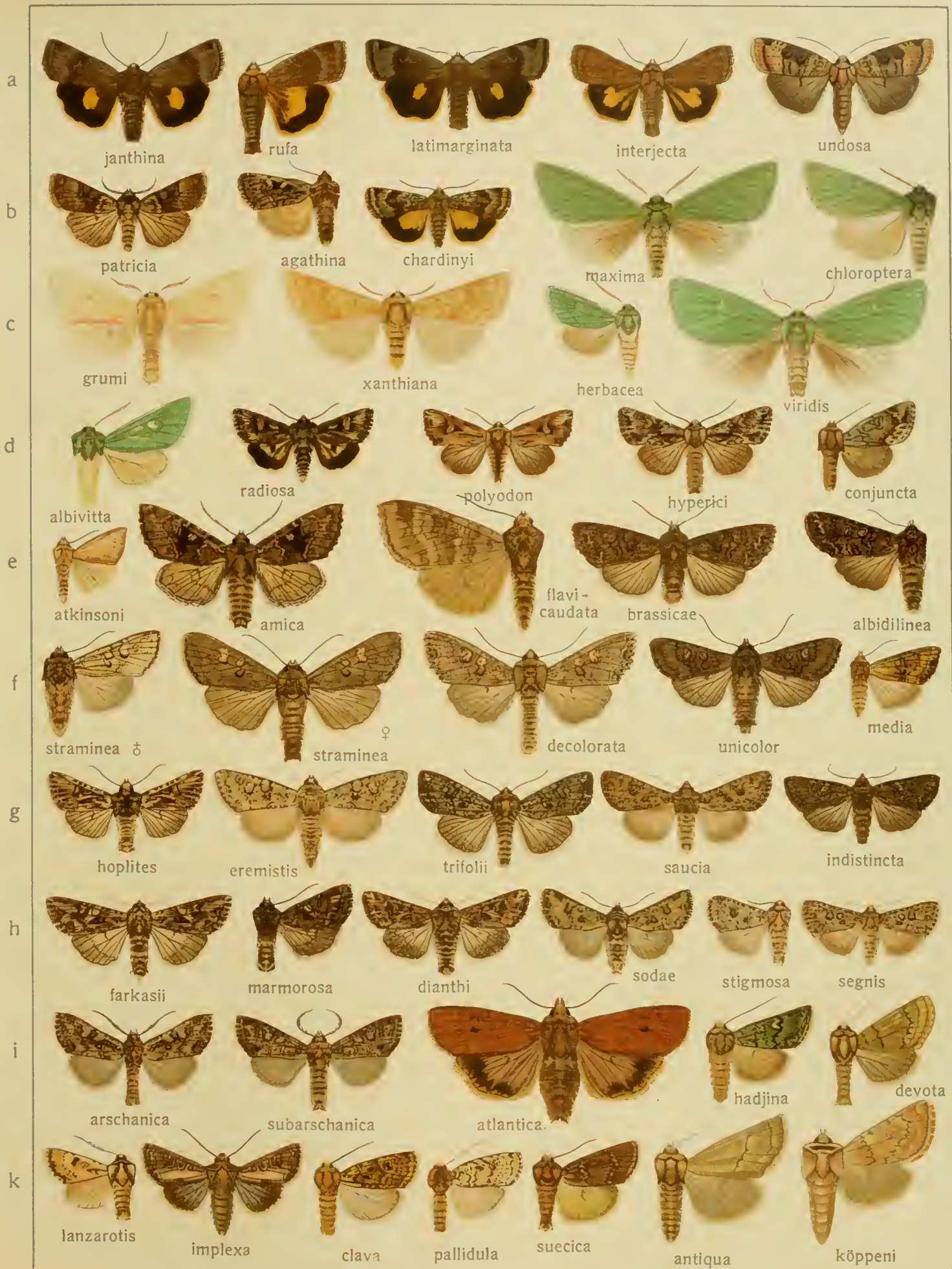
Pars I. Fauna palaeartica 3.



Pars I. Fauna palaeartica 3.



Pars I. Fauna palaeartica 3.



Pars I. Fauna palaeartica 3.

III.

a



proxima cana ochrostigma orientalis literata ♂ literata ♀

b



suffusa luteago ♂ luteago ♀ brunneago ♂ brunneago ♀ argillacea ♀

c



argillacea ♂ argillacea argillacea serratilinea ♂ serratilinea ♀ peregrina

d



contigua ♂ contigua ♀ subcontigua genistae ♂ genistae ♀

e



thalassina ♂ thalassina ♀ achates humeralis nigrifusa

f



altaica dissimilis ♂ dissimilis ♀ suasa ♂ suasa ♀

g



laeta w-latinum confuens aliena ♂ aliena ♀

h



ptochica consanguis ♂ consanguis ♀ mortua persicariae ♂

i



persicariae ♀ accipitrina furcula perdentata

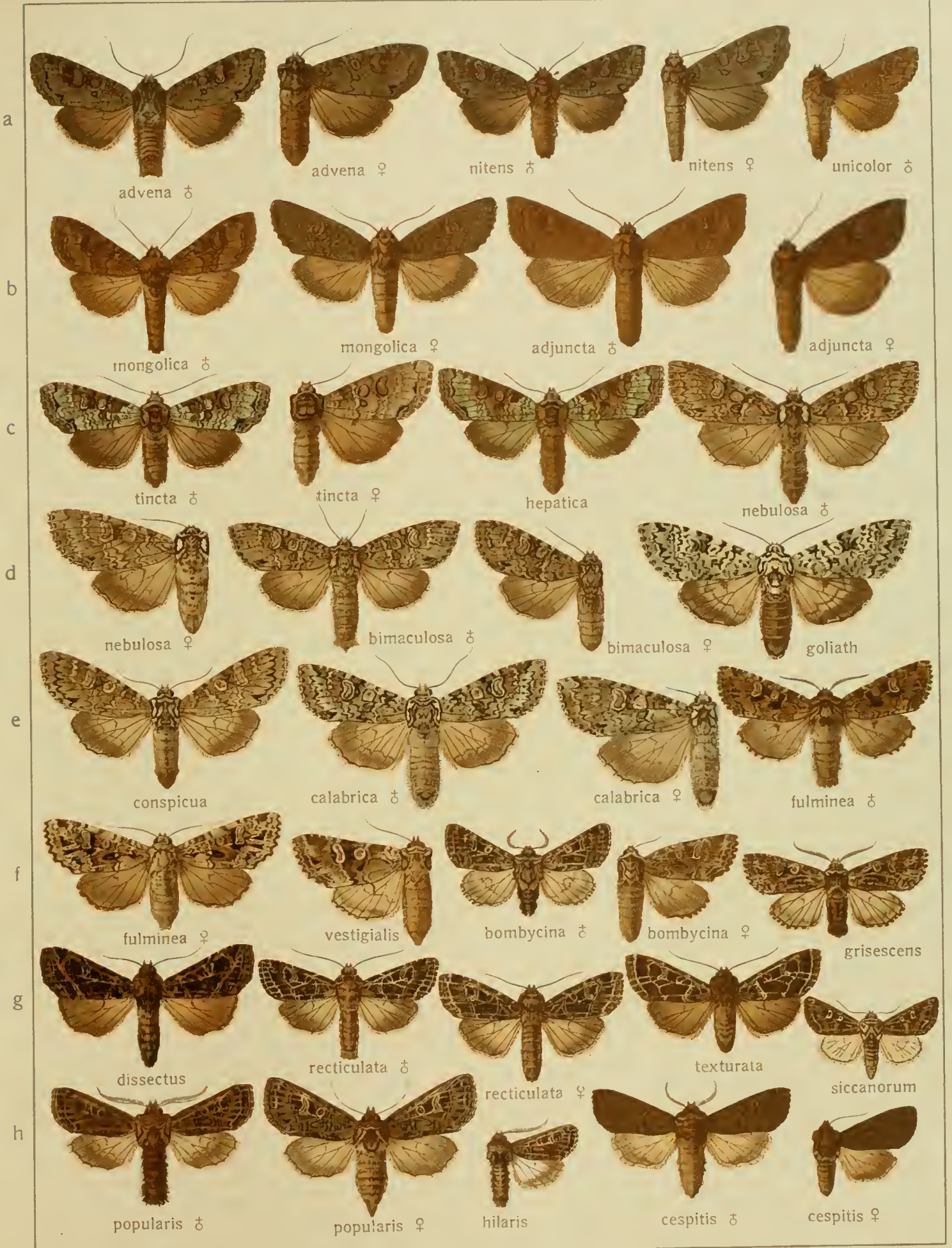


Pars I. Fauna palaeartctica 3.



Pars I. Fauna palaeartica 3.

III.





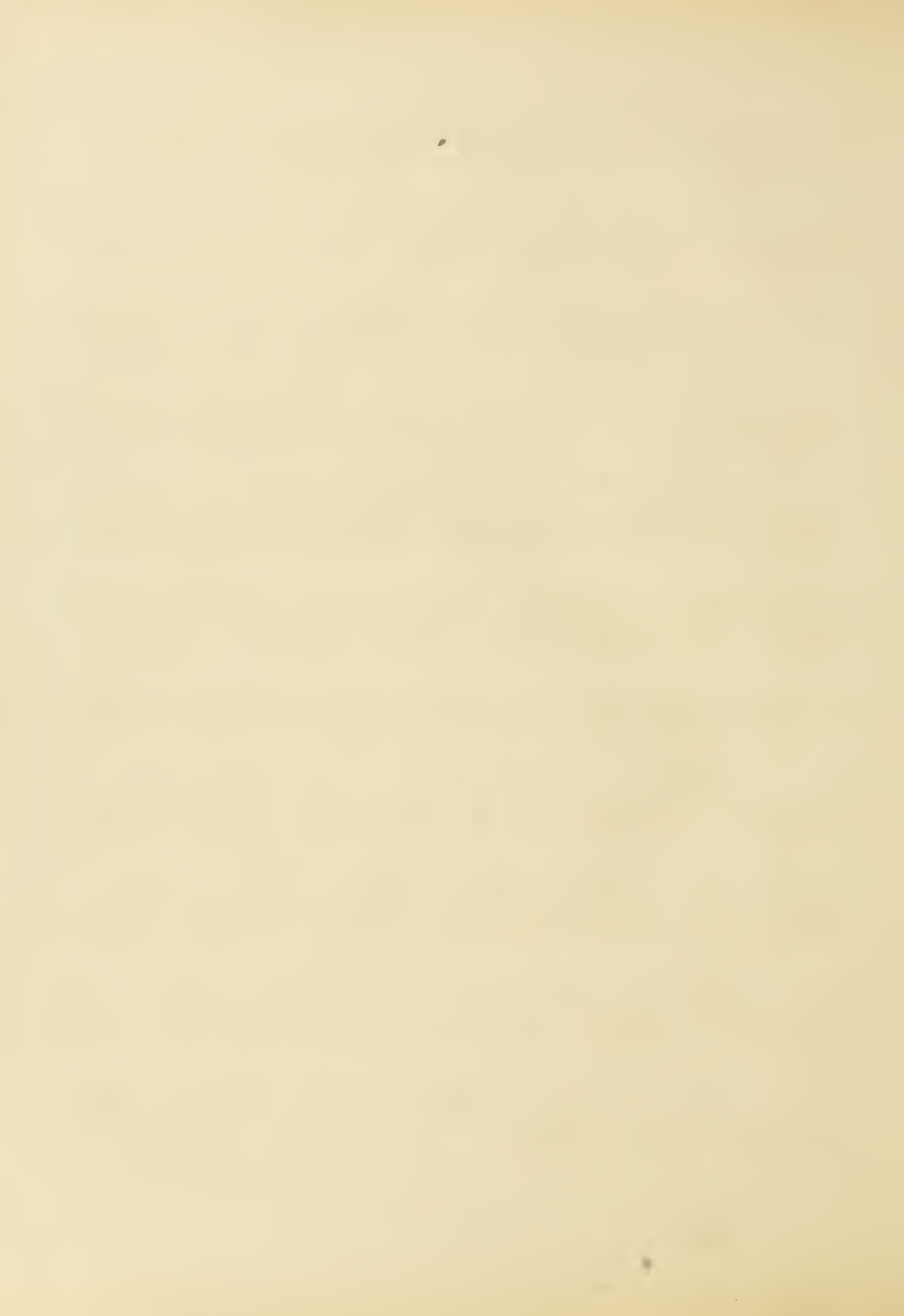
Pars I. Fauna palaeartica 3.



Pars I. Fauna palaeartica 3.



Pars I. Fauna palaeartica 3.





Pars I. Fauna palaeartica 3.





Pars I. Fauna palaeartica 3.





Pars I. Fauna palaeartica 3.

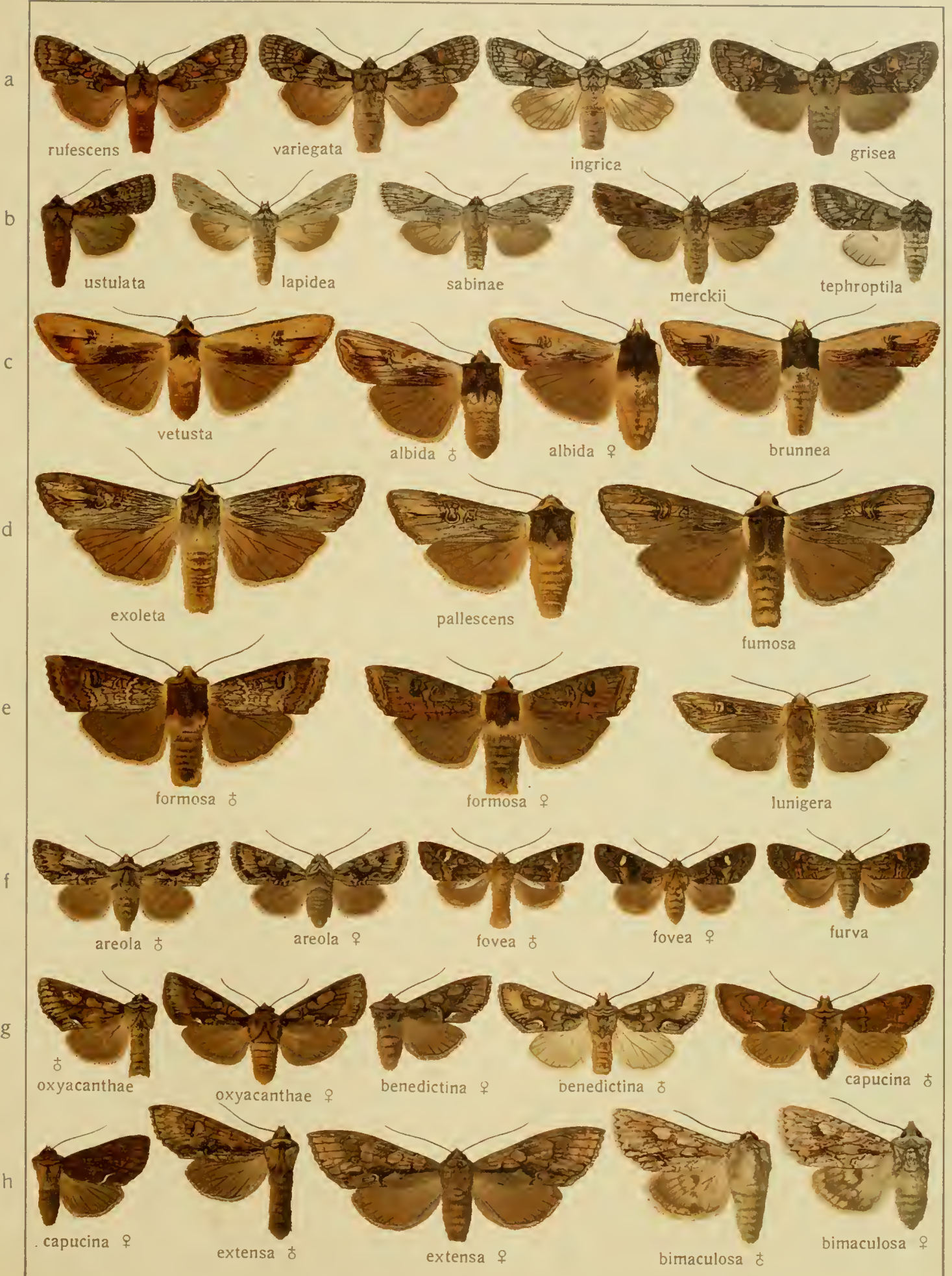




Pars I. Fauna palaeartica 3.



Pars I. Fauna palaeartica 3.



Pars I. Fauna palaeartica 3.



Pars I. Fauna palaeartctica 3.

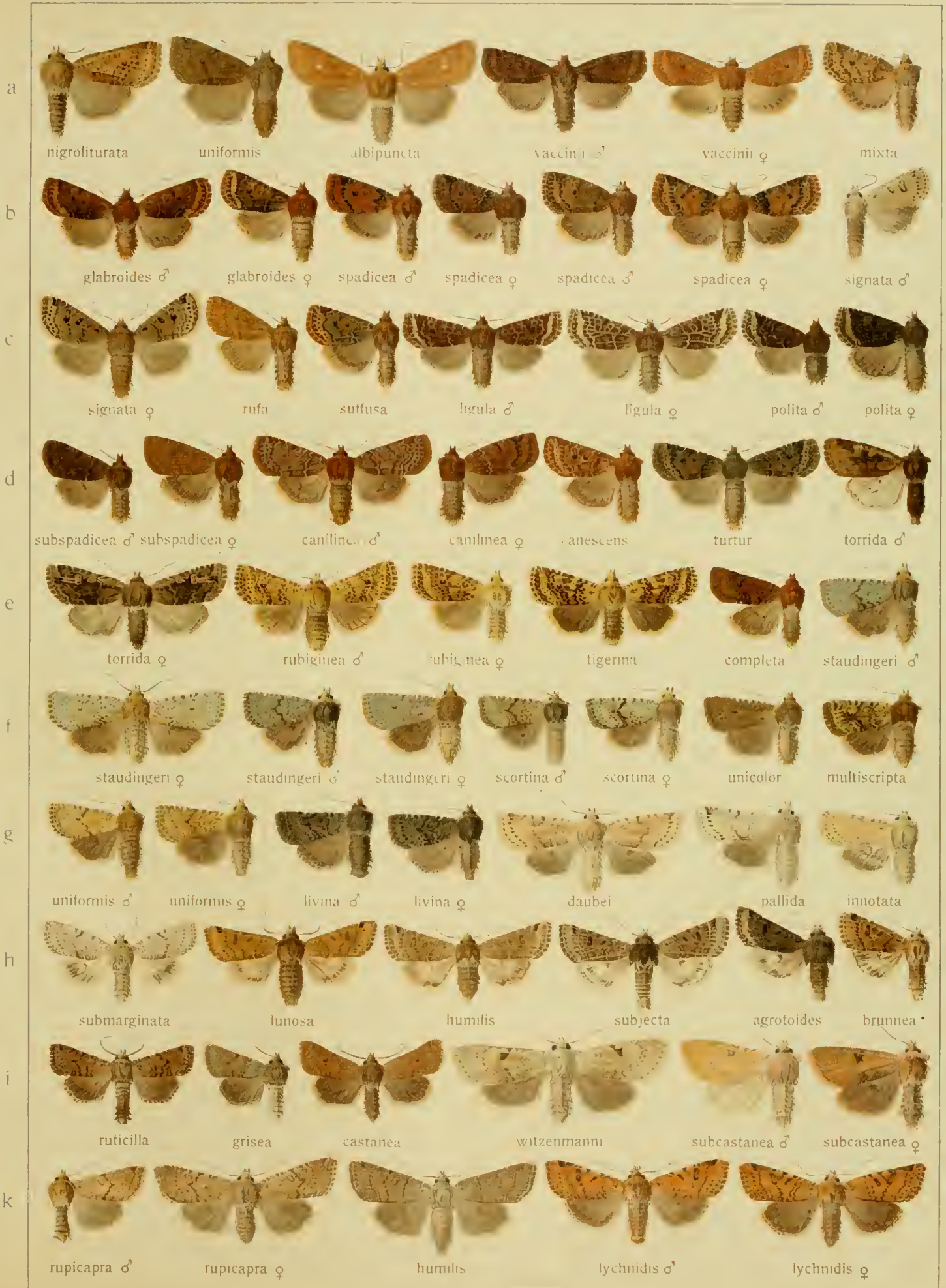


Pars I. Fauna palaeartica 3.





Pars I. Fauna palaeartica 3.



Pars I. Fauna palaeartica 3.



Pars I. Fauna palaeartica 3



Pars I. Fauna palaeartica 3.

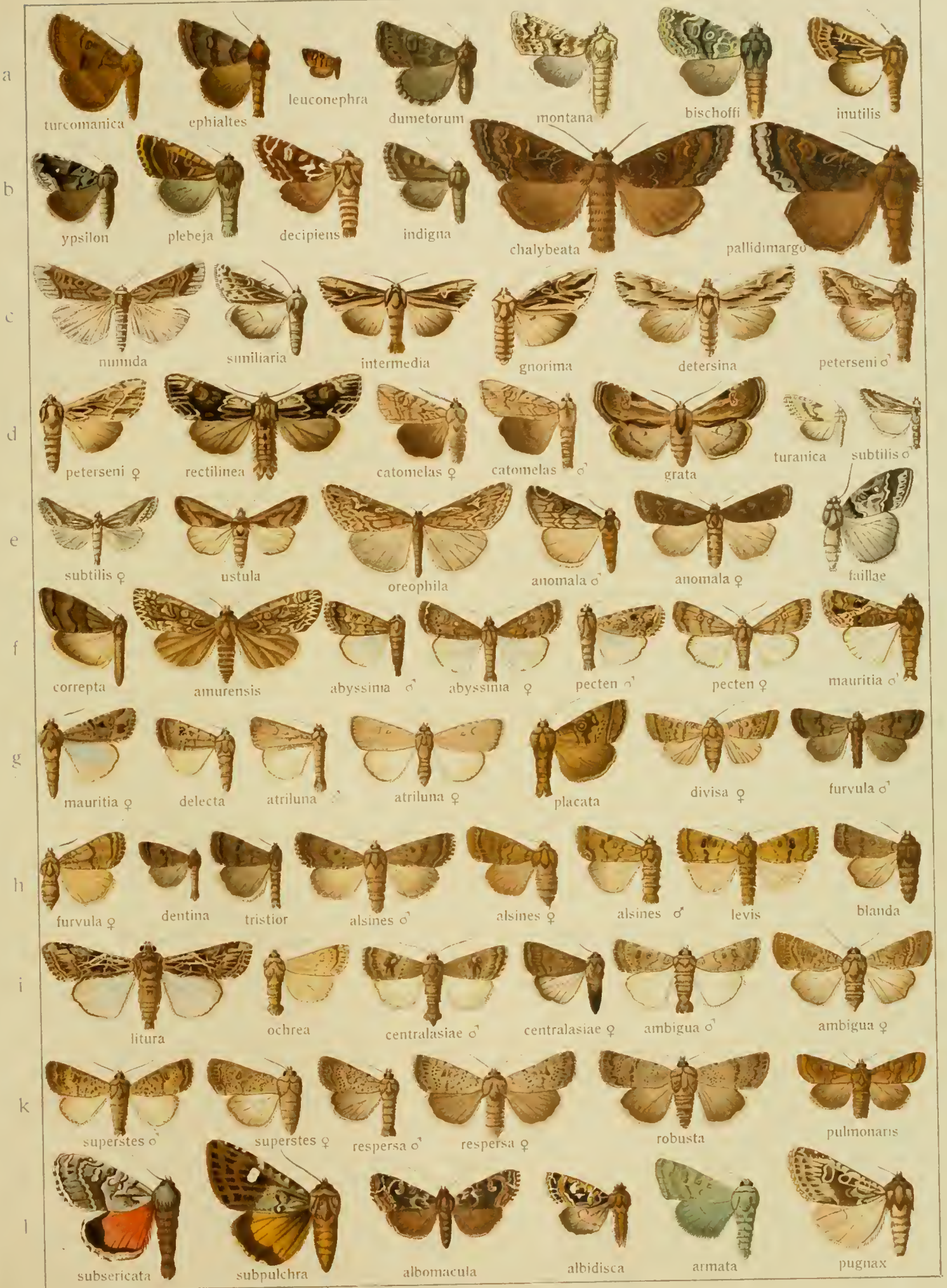


Pars I. Fauna palaeartica 3.



Pars I. Fauna palaeartica 3.





Pais I. Fauna palaeartica 3.



Pars I. Fauna palaeartica 3.



Pars I. Fauna palaeartica 3.

ATHETIS - PROSPALTA



Pars I. Fauna palaeartica 3.



Pars I. Fauna palaeartica 3.



Pars I. Fauna palaeartica 3.





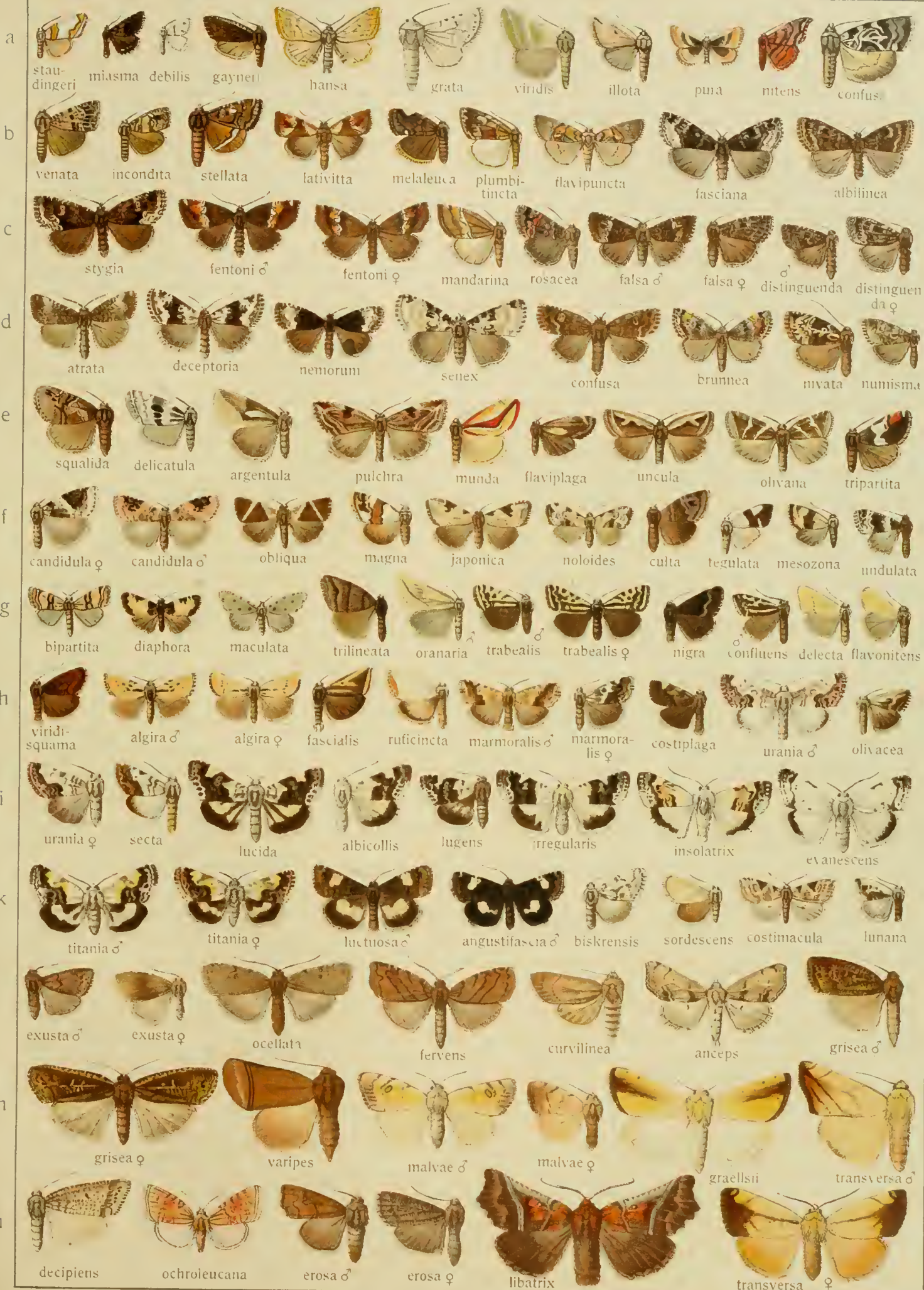
Pars I. Fauna palæarctica 3.



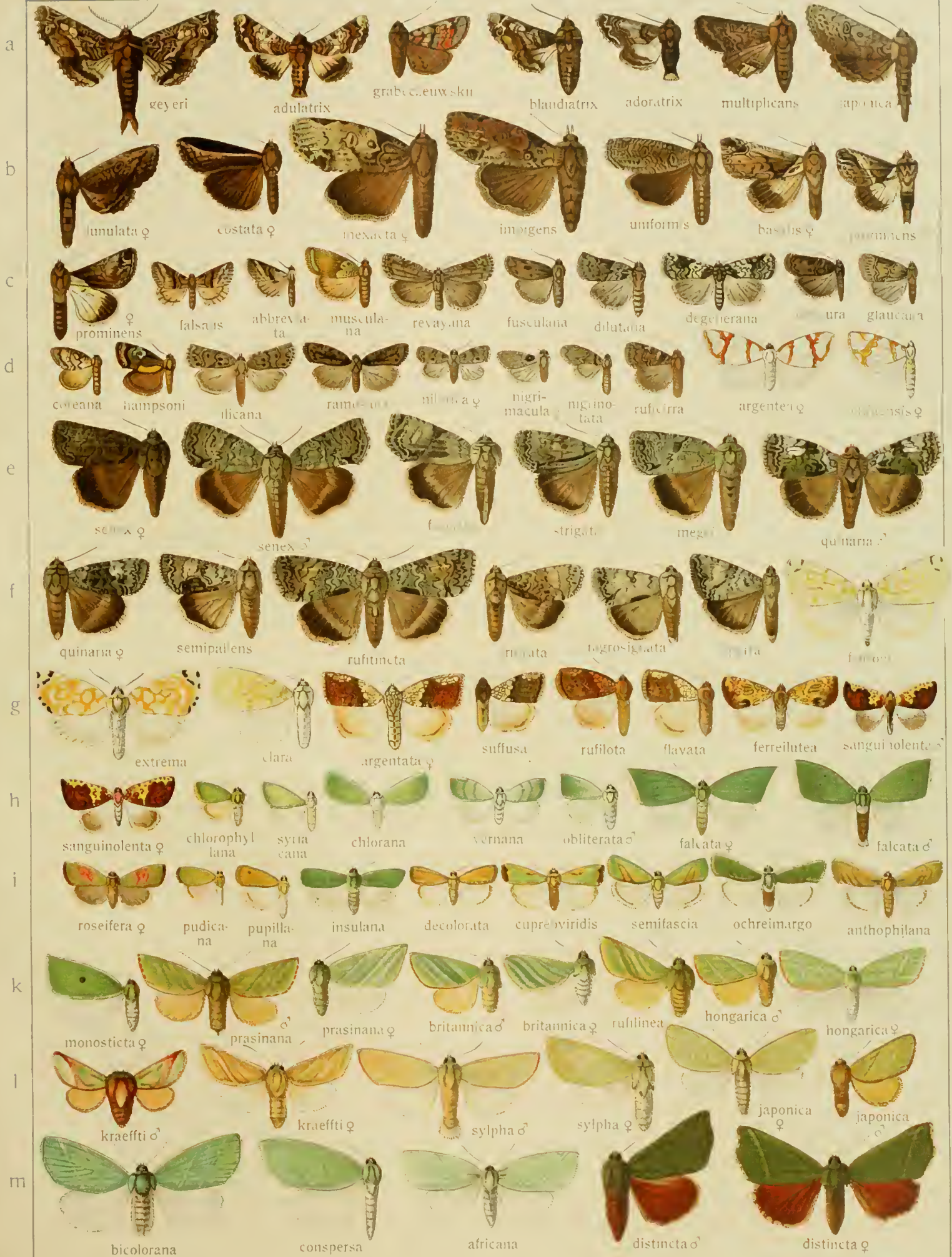
Pars I. Fauna palaeartica 3.



Pars I. Fauna palaeartica 3.



Pars I. Fauna parlarctica 3.



Pars I. Fauna palaeartica 3.



Pars I. Fauna parlaearctica 3.



Pars I. Fauna palaeartica 3.





Pars I. Fauna parlaearctica 3.



Pars 1. Fauna palaeartica 3.



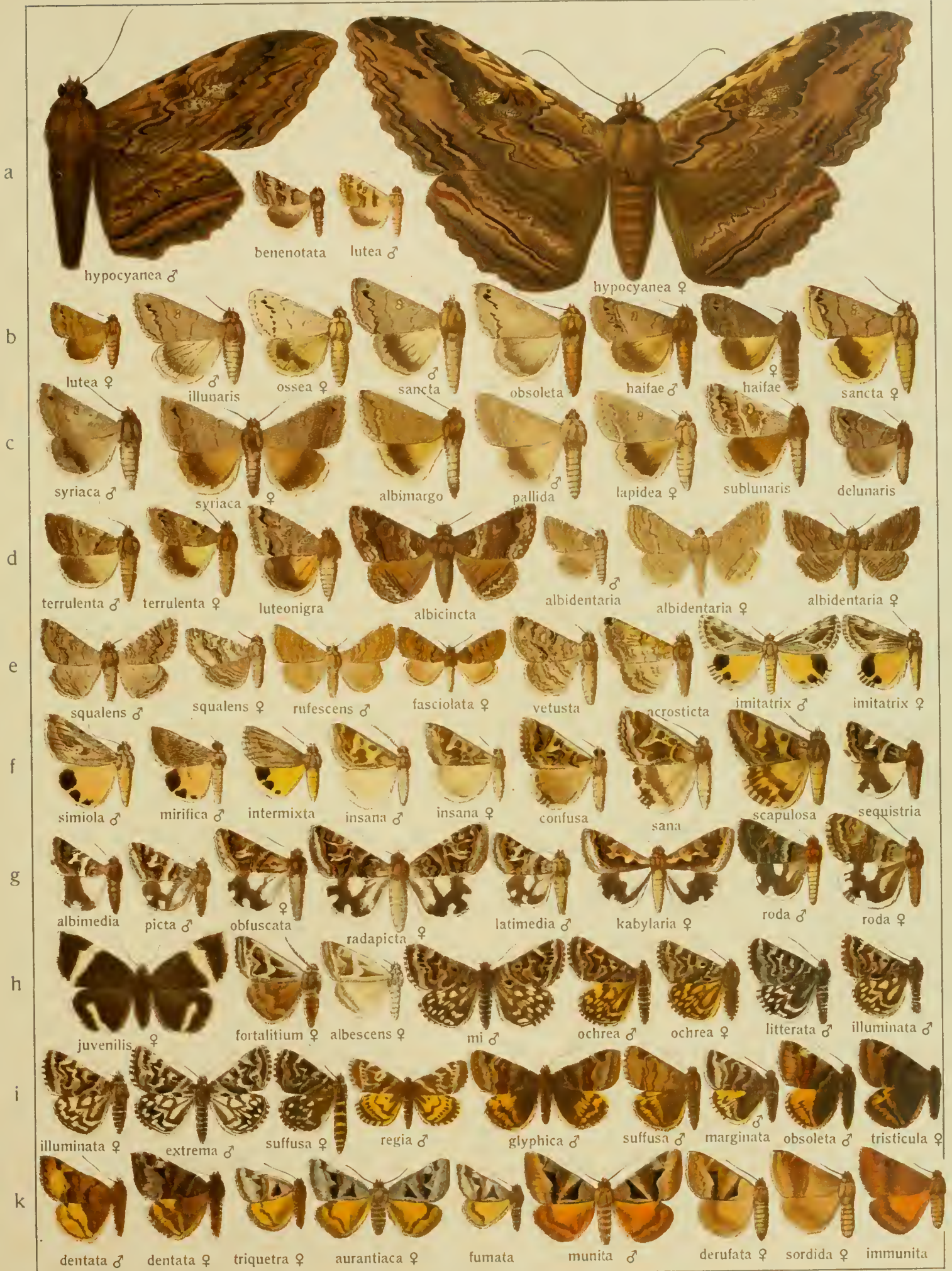
Pars I. Fauna palaeartica 3.



Pars I. Fauna palaeartica 3.



Pars I. Fauna palaeartica 3.



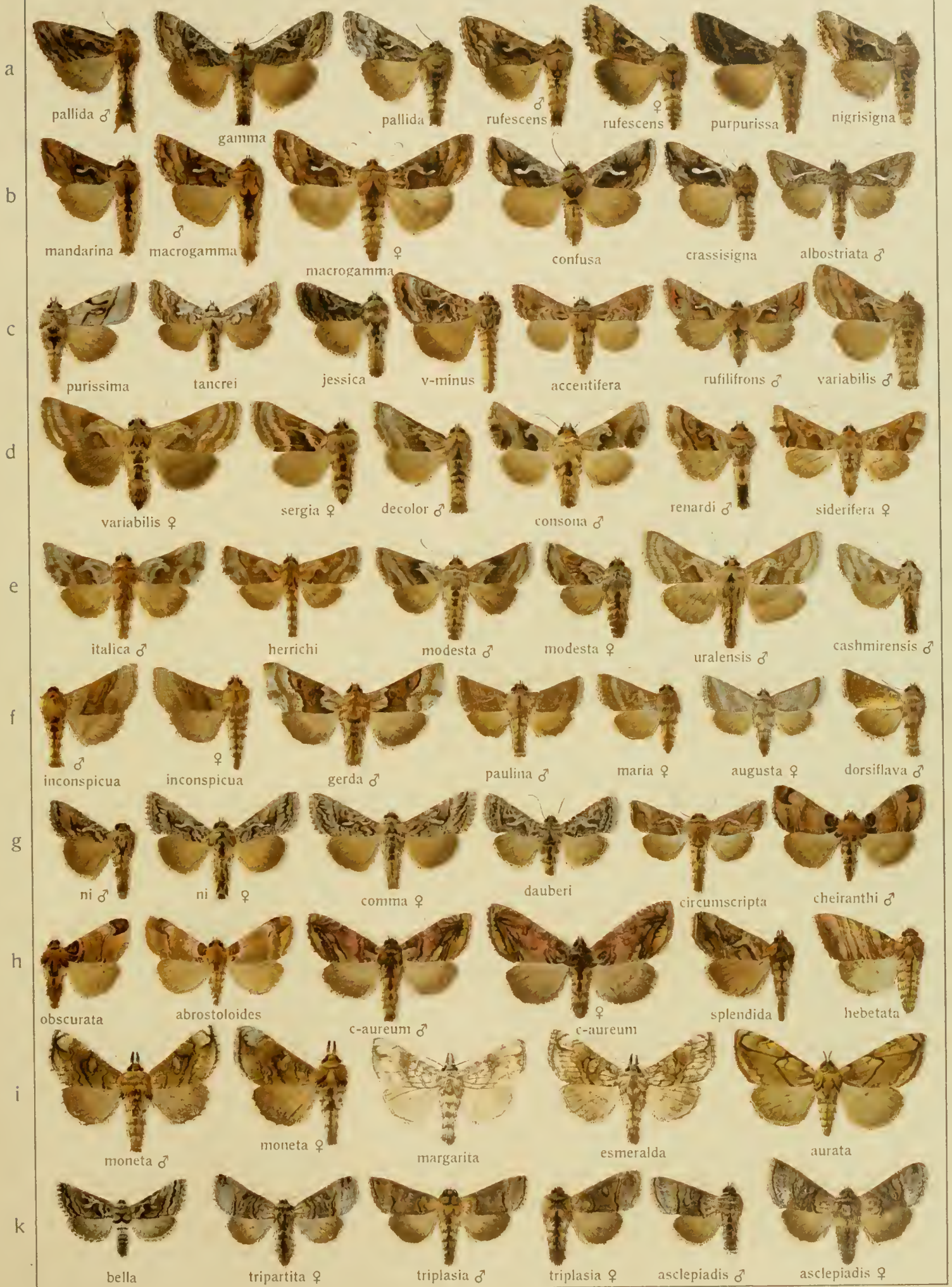
Pars I. Fauna palaeartica 3.



Pars I. Fauna palaeartica 3.



Pars I. Fauna palaeartica 3.



Pars I. Fauna palaeartica 3.

III







Pars I. Fauna palaeartica 3.



Pars I. Fauna palaeartica 3.







HYPENA - BLEPTINA









3 9088 00036 8977

SMITHSONIAN INSTITUTION LIBRARIES