

特C

244

四元義一編

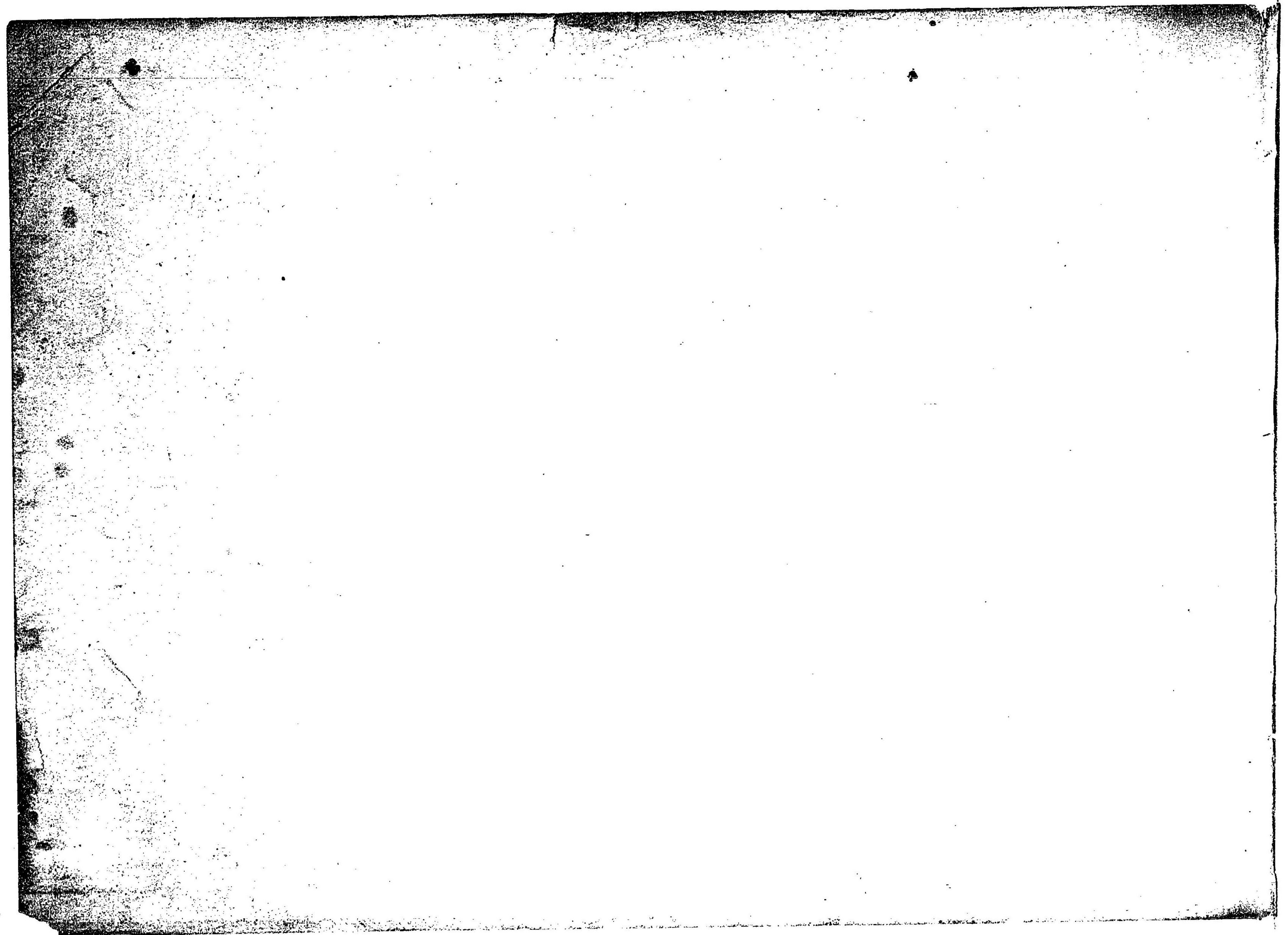
# 薩摩琵琶之譜

第貳彈法

301

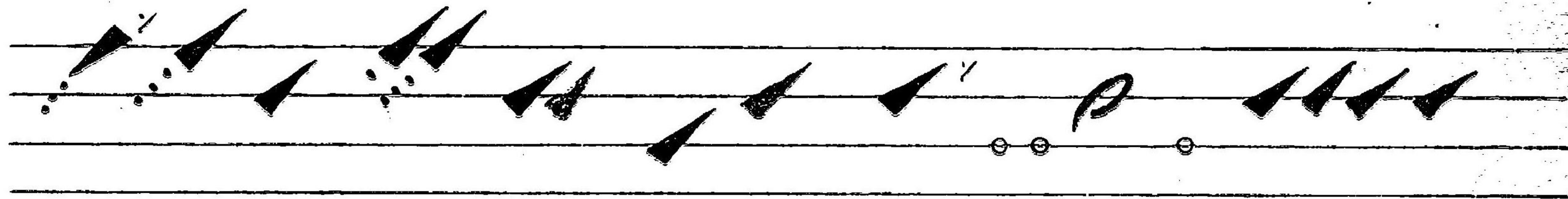
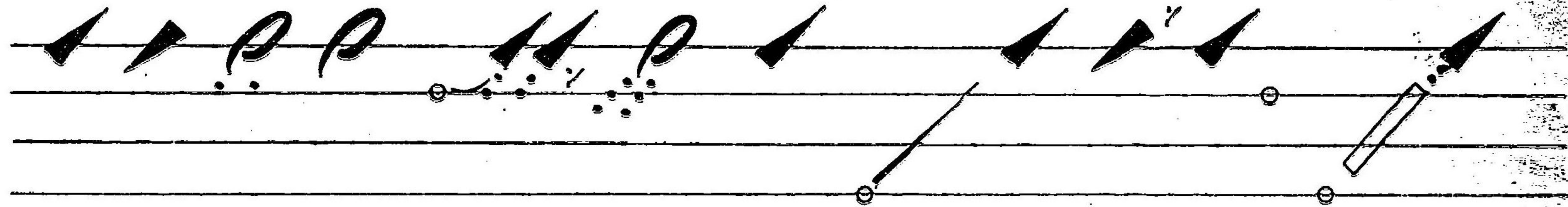
170



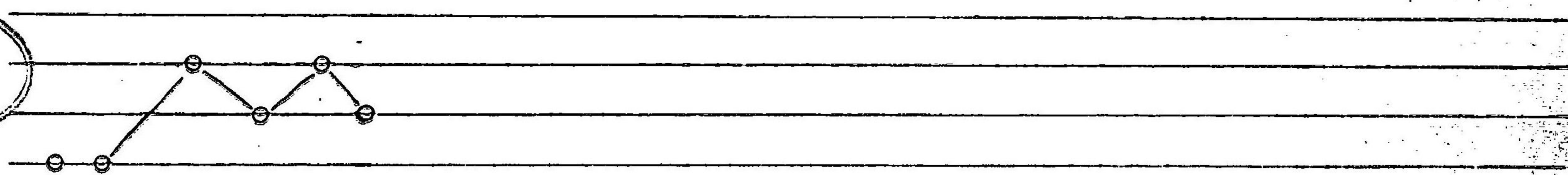




特67  
244



明治  
42 11 10  
内容





下段ノ二

A musical staff with a treble clef and a 4/4 time signature. The staff contains a sequence of notes: a quarter note on G4, a quarter note on A4, a quarter note on B4, a quarter note on C5, a half note on D5, a half note on E5, a quarter note on F5, a quarter note on G5, a quarter note on A5, a quarter note on B5, a quarter note on C6, a quarter note on B5, a quarter note on A5, a quarter note on G5, and a quarter note on F5. There are some handwritten markings above the notes, possibly indicating fingerings or dynamics.

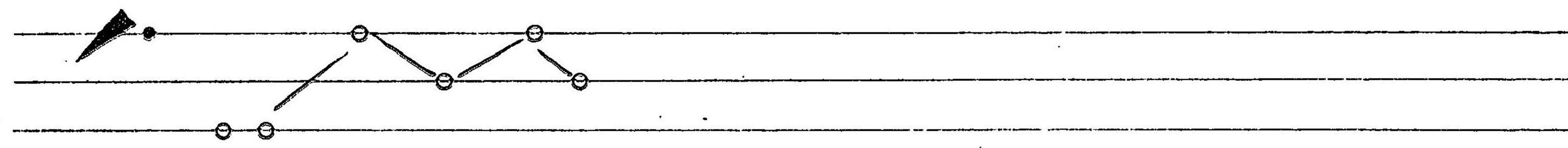
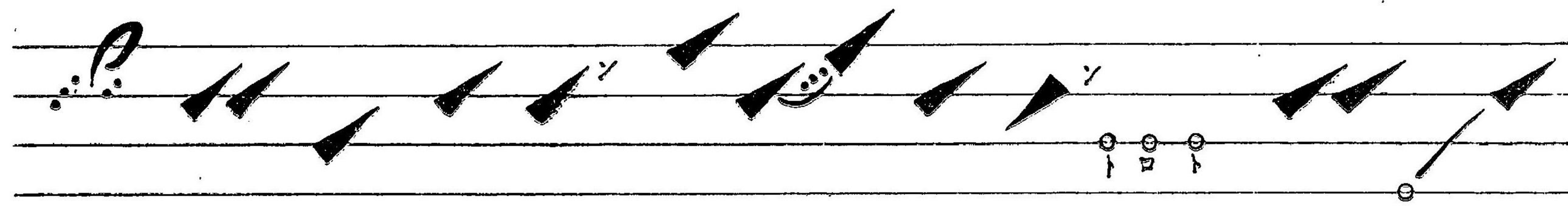
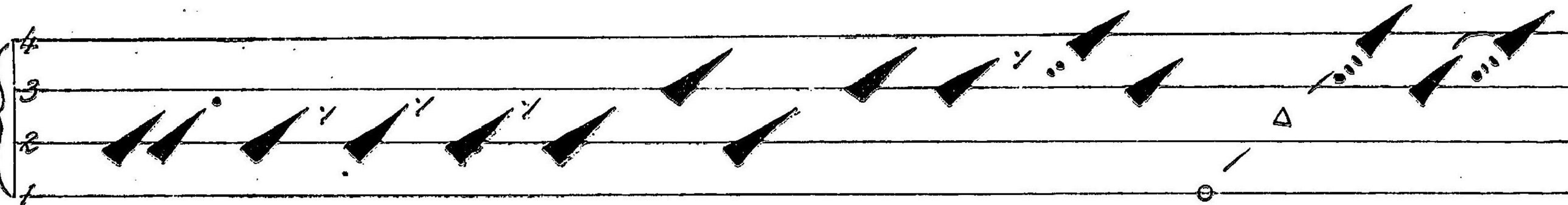
A musical staff with a treble clef and a 4/4 time signature. The staff contains a sequence of notes: a quarter note on G4, a quarter note on A4, a quarter note on B4, a quarter note on C5, a half note on D5, a half note on E5, a quarter note on F5, a quarter note on G5, a quarter note on A5, a quarter note on B5, a quarter note on C6, a quarter note on B5, a quarter note on A5, a quarter note on G5, and a quarter note on F5. There are some handwritten markings below the notes, possibly indicating fingerings or dynamics.



下段ノ三

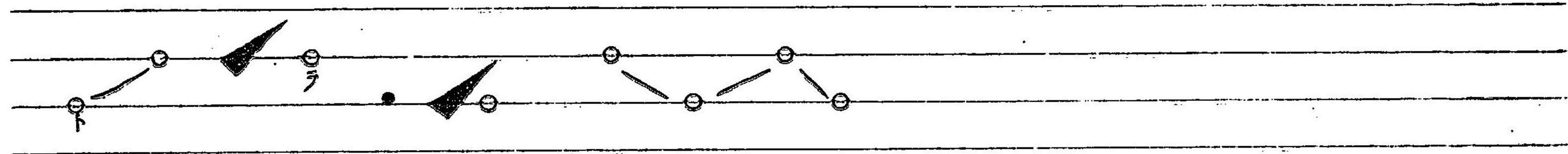
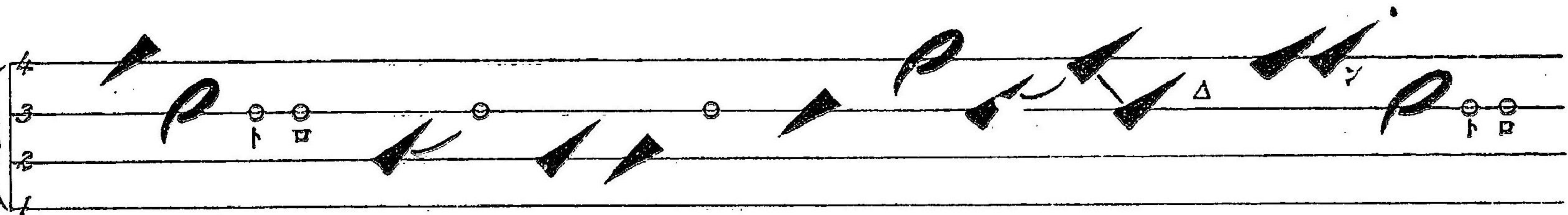


下段  
四



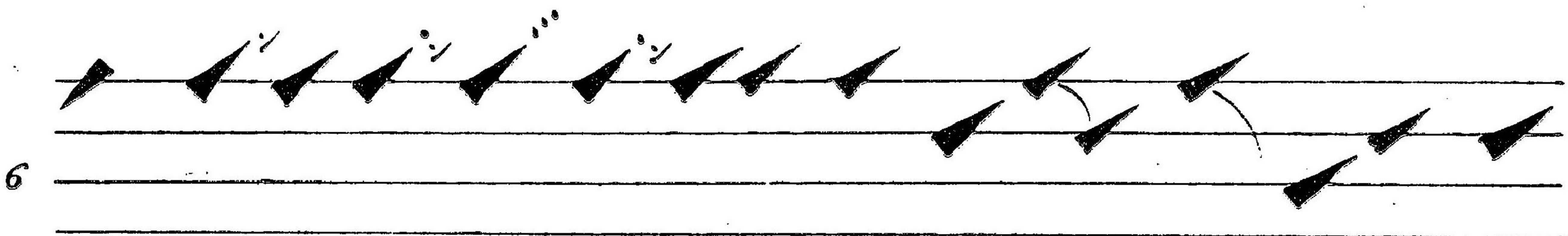
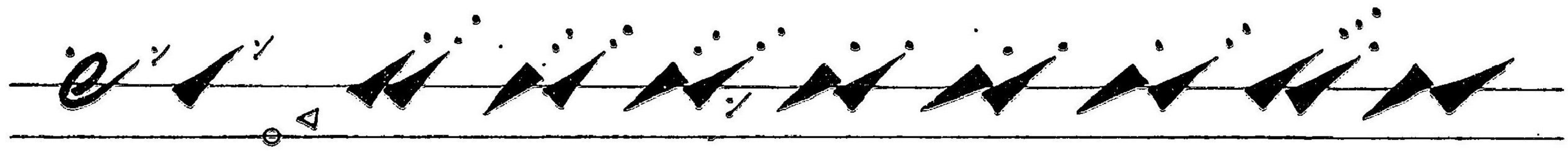
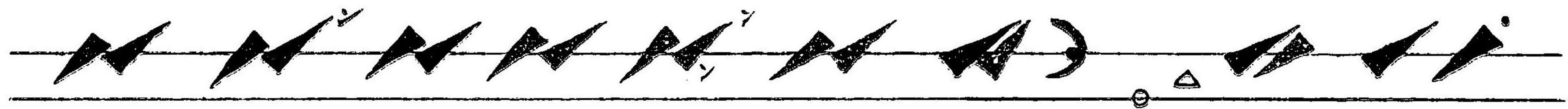
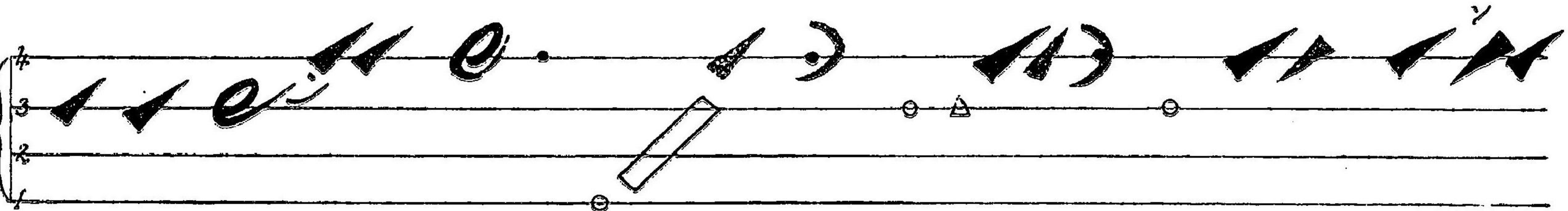


上段ノ一





中段  
一





Handwritten musical notation on a five-line staff, featuring various rhythmic symbols and notes.

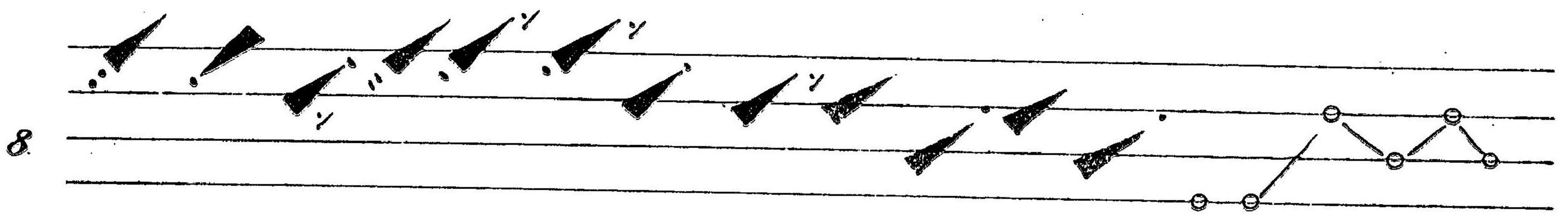
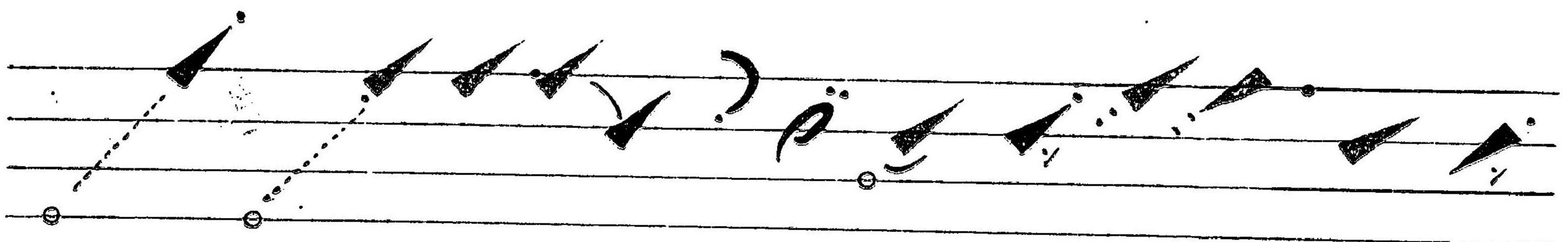
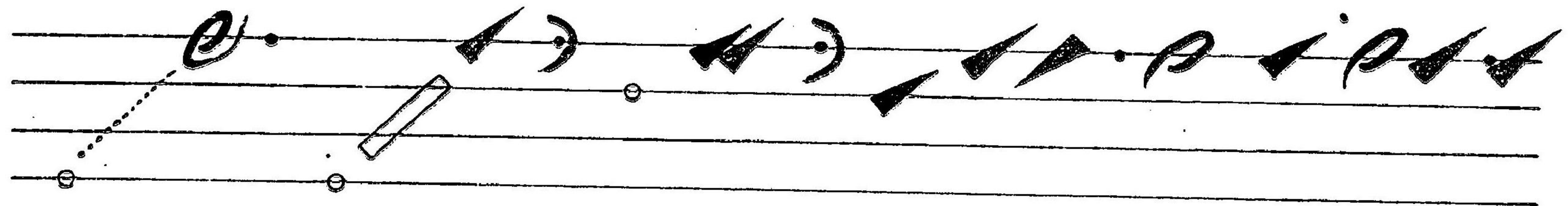
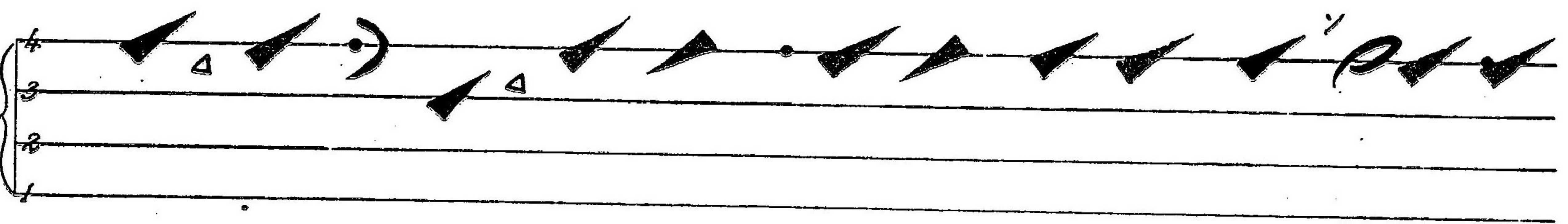
Handwritten musical notation on a five-line staff, featuring various rhythmic symbols and notes.

Handwritten musical notation on a five-line staff, featuring various rhythmic symbols and notes.

Handwritten musical notation on a five-line staff, featuring various rhythmic symbols and notes.



中段  
一  
二





30  
170

# 追次發行目次

第三彈法	一冊	二十五錢	第六彈法	一冊	三十錢
第四彈法	同	三十錢	外、吟替崩之卷		三十五錢
第五彈法	同	三十錢			

明治四十二年十月二十八日印刷

不許  
複製

明治四十二年十一月一日發行 (第二彈法 定價二十五錢)

編者 東京市赤坂區中ノ町十四番地 四元義一

發行所 同番地 精志會

印刷所 東京市京橋區南鍛冶町九番地 小張才三郎

印刷人 同番地 同人



