

172

Secular Patriotic 173



O! Native Music!

An Admired Ballad

IN THE DRAMATIC ROMANCE OF

THE WHITE HORSE OF THE PENELOPES:

Written and Composed

BY

SAMUEL LOVER.

PHILADELPHIA.

Flot, Meignen & Co. Publishers & Importers of Musical Merchandise, 217 Chestnut Street

OH: NATIVE MUSIC.

S. Lover.

ANDANTINO. *Con molto Espressione.*

Oh! Native mu sic, be yond com pa ring The sweetest far on the

ear that falls Thy gentle num bers the heart remembers, Thy strains enchain us in

espress:

colla voce.

ten - der thralls, Thy tones en - dear - ing, Or, sad, or cheer - ing, The

Con *espressi*: *ad lib*: *a tempo*.

ab - sent soothe on a for - eign strand Oh who can tell what a

poco ritenuto.

ad lib:

ho - ly spell Is in the song of our Na - tive Land.

colla voce.

The proud and low - ly, the pil - grim ho - ly, The

* When the Chorus is used, it must be introduced here instead of the Symphony.

lover kneel- ing at beauty's shrine, The bard who dreams by the haunted streams, All,

all are touch'd by thy power di- vine! The Captive cheerless; The Soldier fearless; The

Colla voce. *p* *f* *p*

Con spirito.

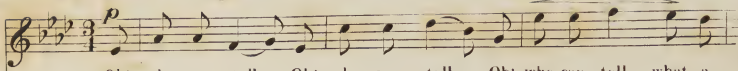
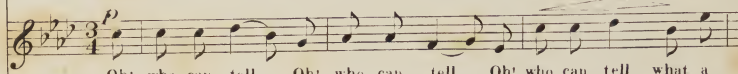
Mother, taught by Na- ture's hand, Her child, when weeping, Dath lull to sleep- ing, With

Molto Espress. *ad lib.* *Tempo, Con tenerezza*

some sweet Song of her Native Land.

Colla voce. *Rallent.:*

CHORUS.* arranged by W. FORDE.

VOCE 1^{ma}VOCE 2^{da}

CORO.

SOPRANO
1^{ma} E 2^{da}

TENORE
E BASSO

Oh! who can tell what a

Oh! who can tell what a

PIANO

legato

FORTE.

cres *dim*

ho - ly spell, Is in the Song of our Na - tive Land.

cres *dim*

ho - ly spell, Is in the Song of our Na - tive Land.

cres *dim*

ho - ly spell, Is in the Song of our Na - tive Land.

cres *dim*

ho - ly spell, Is in the Song of our Na - tive Land.

cres *dim*

* This Chorus may be performed by the Principal Voice, and the First Soprano, Tenor, and Bass; or the Tenor may be omitted and the Second Soprano retained.

