

1.917
020r3

U.S. Dept. of Agriculture *25707*
ORGANIZATION OF THE UNITED STATES DEPARTMENT OF AGRICULTURE FOR WAR EFFORT



PAUL H. APPLEBY
UNDER SECRETARY
OF AGRICULTURE



GROVER B. HILL
ASSISTANT SECRETARY
OF AGRICULTURE



CLAUDE R. WICKARD
SECRETARY OF AGRICULTURE

EUGENE C. AUCHTER	J. B. HUTSON
C. B. BALDWIN	HARRY SLATTERY
A. G. BLACK	H. R. TOLLEY
SAMUEL B. BLEDSOE	M. CLIFFORD TOWNSEND
EARLE H. CLAPP	M. L. WILSON
ROY F. HENDRICKSON	

AGRICULTURAL WAR BOARD

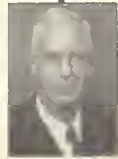
LIBRARY
RECEIVED
★ NOV 3 1942 ★
U. S. Department of Agriculture



SAMUEL B. BLEDSOE
DIRECTOR
OFFICE FOR AGRICULTURAL
WAR RELATIONS



W. A. JUMP
DIRECTOR
OFFICE OF BUDGET
AND FINANCE



FRED MORRELL
CHIEF
OFFICE OF CCC ACTIVITIES



T. ROY REID
DIRECTOR
OFFICE OF PERSONNEL



MORSE SALISBURY
DIRECTOR
OFFICE OF INFORMATION



RALPH R. SHAW
LIBRARIAN
THE LIBRARY



ROBERT H. SHIELDS
SOLICITOR
OFFICE OF THE SOLICITOR



ARTHUR B. THATCHER
CHIEF
OFFICE OF PLANT AND
OPERATIONS



H. R. TOLLEY
CHIEF
BUREAU OF AGRICULTURAL
ECONOMICS



ERNST H. WICKING
COORDINATOR
OFFICE OF LAND USE
COORDINATION



M. L. WILSON
DIRECTOR
EXTENSION SERVICE



L. A. WHEELER
DIRECTOR
OFFICE OF FOREIGN
AGRICULTURAL RELATIONS



EUGENE C. AUCHTER
ADMINISTRATOR
AGRICULTURAL RESEARCH
ADMINISTRATION



C. B. BALDWIN
ADMINISTRATOR
FARM SECURITY
ADMINISTRATION



A. G. BLACK
GOVERNOR
FARM CREDIT
ADMINISTRATION



EARLE H. CLAPP
ACTING CHIEF
FOREST SERVICE



ROY F. HENDRICKSON
ADMINISTRATOR
AGRICULTURAL MARKETING
ADMINISTRATION



J. B. HUTSON
PRESIDENT
COMMODITY CREDIT
CORPORATION



HARRY SLATTERY
ADMINISTRATOR
RURAL ELECTRIFICATION
ADMINISTRATION



M. CLIFFORD TOWNSEND
ADMINISTRATOR
AGRICULTURAL CONSERVATION AND
ADJUSTMENT ADMINISTRATION

PREPARED IN THE DIVISION OF
ORGANIZATION AND PERSONNEL
MANAGEMENT OFFICE OF PERSONNEL



APPROVED
Claude R. Wickard
SECRETARY OF AGRICULTURE
SEPTEMBER 1, 1942

1881
113