



Produced by NOAA
Office of Coast Survey
Not Intended for Navigation

0 50 100
nautical miles

Overview of USCG Proposed Routing in Vicinity of Bering Strait



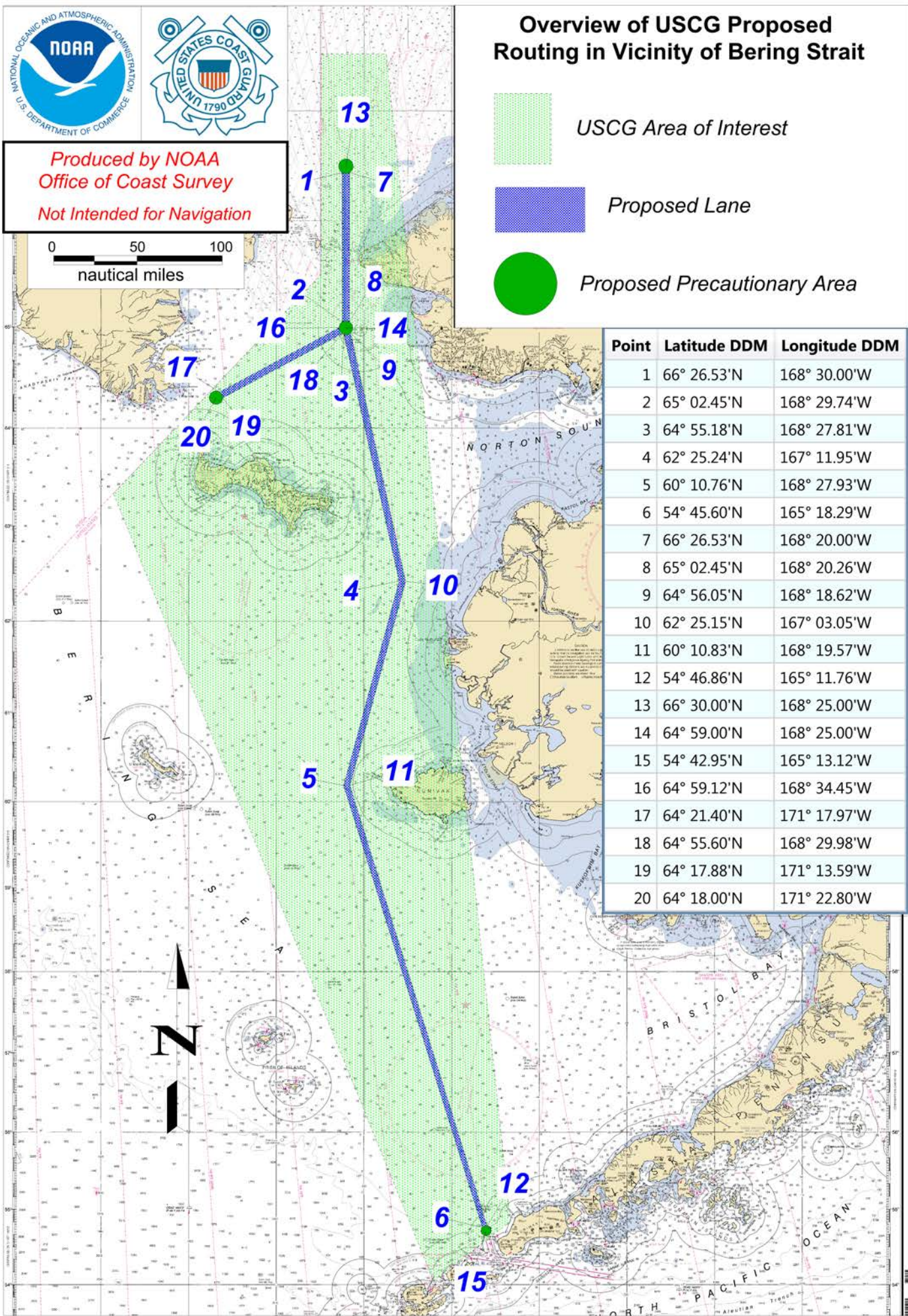
USCG Area of Interest



Proposed Lane



Proposed Precautionary Area



Point	Latitude DDM	Longitude DDM
1	66° 26.53'N	168° 30.00'W
2	65° 02.45'N	168° 29.74'W
3	64° 55.18'N	168° 27.81'W
4	62° 25.24'N	167° 11.95'W
5	60° 10.76'N	168° 27.93'W
6	54° 45.60'N	165° 18.29'W
7	66° 26.53'N	168° 20.00'W
8	65° 02.45'N	168° 20.26'W
9	64° 56.05'N	168° 18.62'W
10	62° 25.15'N	167° 03.05'W
11	60° 10.83'N	168° 19.57'W
12	54° 46.86'N	165° 11.76'W
13	66° 30.00'N	168° 25.00'W
14	64° 59.00'N	168° 25.00'W
15	54° 42.95'N	165° 13.12'W
16	64° 59.12'N	168° 34.45'W
17	64° 21.40'N	171° 17.97'W
18	64° 55.60'N	168° 29.98'W
19	64° 17.88'N	171° 13.59'W
20	64° 18.00'N	171° 22.80'W