

Historic, Archive Document

Do not assume content reflects current scientific knowledge, policies, or practices.

THIS CATALOGUE TAKES THE PLACE OF ALL PREVIOUS ISSUES

FALL 1905.

Established 1875—(A Record of Thirty Years.)

SPRING 1906.

WHOLESALE AND RETAIL
PRICE LIST

OF THE

SARCOXIE NURSERIES

J. B. WILD & BROS., PROPS.
SARCOXIE, MO.



Electric Lighted.

BEST COOL STORAGE AND PACKING HOUSE EXTANT.

30th ANNUAL WHOLESALE AND RETAIL PRICE LIST.

Issued August 18th, 1905.

.... WESTERN GROWN NURSERY STOCK

Extensive Growers of Ornamental Trees for City or Private Parks.

Our Exhibit was Awarded Gold Medal at World's Fair, St. Louis, Mo.

Our Nurseries are advantageously located on the line of the St. Louis & San Francisco R. R., (Frisco System) between diverging points. Three passenger trains (Wells Fargo Express) daily each way. It is but 15 minutes walk from depot to our grounds. Shipping and business facilities unsurpassed. Side track adjoining grounds. Connected by Home mineral belt, and local telephone companies; Missouri, Kansas & Texas (Bell) Long distance phone in our office.

PRESS OF THE PRACTICAL FRUIT GROWER, SPRINGFIELD, MO.

COPY OF CERTIFICATE.

AGRICULTURAL COLLEGE OF MISSOURI EXPERIMENT STATION, DEPARTMENT OF ENTOMOLOGY.—CERTIFICATE OF INSPECTION OF NURSERY STOCK.

To Whom It May Concern:

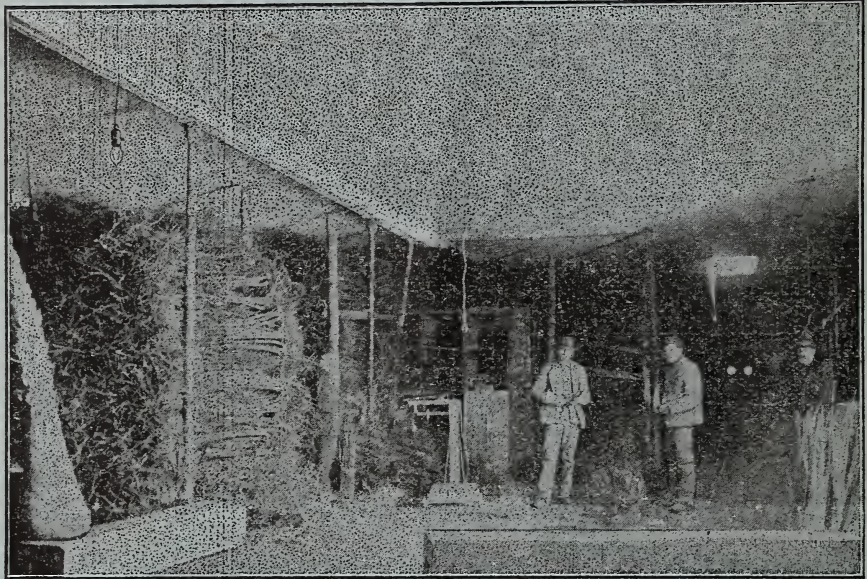
Columbia, Mo., August —, 1905.

This is to certify that on the — day of August, 1905, I examined the Nursery Stock of the Sarcoxie Nurseries, James B. Wild & Bros., proprietors, grown in their Nurseries at, and in the vicinity of Sarcoxie, Jasper county, Missouri, and found no indications of the presence of San Jose Scale, Peach Yellow, Rosette, or other DANGEROUS insects or plant diseases liable to be transferred on nursery stock from the nursery to the orchard.

This certificate is good for one year from date of inspection.

J. M. STEDMAN, Entomologist, Experiment Station.

NOTE.—Copy of certificate showing examination for fall, 1905, and spring, 1906, will appear on invoices.



INTERIOR OF OUR COOL STORAGE BUILDING.

The above cut shows the interior of our frost-proof brick packing and cool storage rooms, 60 feet by 120 feet. It is supplied with electric lights, and a system of waterworks is maintained for use at all times.

"The Wild Bros. are pioneers in the process of storing trees without packing them in moss, excelsior or shingle tow. This process consists of regulating the temperature in the storage building to a certain point where the evaporation is lessened as much as possible, and the possibility of mould and mildew is thereby decreased."

SPECIAL MENTION—COOL STORAGE WINTER SHIPMENTS.

The past years have demonstrated the necessity of winter storing of young nursery stock and plants, and we now have with our COOL STORAGE PROCESS the best method of keeping and wintering trees and plants for shipment at any time, likewise extending planting and shipping into the month of May.

FOR WINTER AND SPRING ORDERS our storage room (see above cut), having a capacity of over twenty carloads, will be supplied with an assortment of leading Fruit Trees, Forest Tree Seedlings, Grape Vines, etc., which will enable us to ship to our Texas, Pacific or Western and other distant customers as early as they may desire.

All orders requiring storing for early winter or late spring shipment must be sent in by December 20th. Customers can order any time between October and April 25th, and shipments can be made without danger to any point south of the fortieth parallel in winter (except January) from our storage house, of such stock as we have in storage.

A list of stock in storage will be sent to applicants after December 20th of each year. We clip the following from the editorial correspondence in the *Prairie Farmer* (Orange Judd, editor), Chicago, June 26th, 1886, relative to the reports on exhibits at the eleventh annual meeting of the Nurserymen, Seedsmen and Florists, held at Washington, D. C., June 16th to 20th, 1896: "J. B. Wild & Bros., Sarcoxie, Mo., exhibited a lot of trees and plants kept in cool storage up to June 10th, having been placed there November last, without moss, sand or soil, and trees being corded up in fine condition, the plan making it possible to extend the shipping season much longer than usual."

MODES OF PROPAGATION IN APPLE TREES.

We propagate our trees from regular Scion Orchards (mother blocks), and not from nursery rows, except in newly introduced novelties and scarce sorts, which are necessarily propagated from young trees until top-worked trees can come into bearing. We are the largest growers of Apple Scions, being headquarters for the nursery trade.

"WHOLE ROOT TREES," SO CALLED.—All nurserymen grow Apricot, Cherry, Peach, Pear and Plum on whole stocks, so there is no difference in these. Neither is there much, if any, in Apple Trees grown as "Whole Root" grafted (which are in reality piece root), "shortened in" while planting just right, you see, "so that the scion also roots." "Catch 'em a comin' an' a goin'."

We are sometimes asked whether this or that method of propagation is best. Years ago when there was a great claim made for the so-called whole-root (?) grafts, we ordered some of these so-called whole-root grafts from a Missouri nursery claiming to make a specialty of the so-called whole-root grafts and trees. Fig. 3 is from a photo of what we received as whole-root grafts. Also in this order were several varieties of two-year-old Apple trees sent in as whole-root trees, but neither grafts nor trees were found to be such, although billed and labeled as such. Since Fig. 3 represents an average of the kind of grafts that the so-called whole-root grafted trees are grown from, is it to be wondered at that the purchaser not familiar cannot discover a difference except in price (which is about the only difference)? What we believe should be sent out as whole-root grafts, or from which the nearest truly whole-root trees can be grown, is from grafts like our Fig. 4, which is worked on the ENTIRE STOCK, (not as in Fig. 3). We do not, however, claim any advantage for whole-stock grafts, as represented in Fig. 4. In fact, this kind of graft offers many serious objections, since the stocks or seedlings are subject to great variations as to hardness, as a rule not being as hardy as the leading commercial varieties, and in planting places the tree upon the greater part of the seedling, which will not stand the cold climate of some sections. Then there is the objection of sprouting from the ground, rendering the susceptibility of being affected by Woolly Aphis much more than in any of the other methods. THIS ALSO APPLIES TO BUDDED APPLE TREES, EVEN TO A GREATER EXTENT, as also in the uneven keeping quality of the fruit, which is not so apparent on trees more nearly on their own root system, thereby rendering the keeping quality more uniform. Observation shows that most planters, as well as some nurserymen, cut off or shorten in this kind of graft before planting to about where the lower tie appears, making these grafts practically the same as in Fig. 5, which are called crown or collar grafts, and places the crown some four or five inches below where it originally stood. Fig. 11, worked on second cut of a stock, more nearly conforms to placing the root, when planted in the ground, in its natural or former position than any other method, and also does away with most of the sprouting eyes, and is, in our opinion, the best kind of a graft obtainable from a seedling or stock. Fig. 6 represents piece-root grafts as generally made and sold as such.

President Wellhouse gave his experience as follows: "In 1876 we planted out about 30,000 grafts and some 4,000 or 5,000 of whole roots. We had heard a great deal about these whole roots, so we planted about 5,000. We ran a dead furrow and put the lister in and made the furrow just as deep as we could get it, and when we planted the whole roots we had to take a spade and dig down still further. We took them all up at two years old and planted about 30,000, which were from piece roots of the usual length—two inches. In the orchard there were two rows of Missouri Pippins and two rows of Ben Davis on whole roots, planted in the spring of 1878, and growing there now. If any man can tell the difference he can do more than I can. The only difference I saw in that time was that the whole roots sent up more seedling sprouts and caused us lots of work, but so far as the longevity of the trees was concerned, we could see no difference. But they were terrible things to sprout. About nine-tenths of our two-inch roots, when we took them up from the nursery, had sent out roots from the scion, and the more we experimented in that line the more we desired them that way; and from that time on we have used only short roots, to get the roots from the scion, and have always been satisfied with them. Whenever you pay one mill more for a whole-root than a piece-root you are out just that much money."

Prof. W. L. Howard, of the Missouri State Agricultural College, says, on the subject of whole and piece roots: "Experiments conducted by the government fruit stations, after experience with four years' growth, conclude there is no difference in the growth and vitality of a tree, whether grown from whole- or piece-root graft, and that whether nursery stock is called whole-root or piece-root."

Read Terms and Conditions of Sale Before Ordering.

Budded Trees Expose Equally the Defect.



The oily-tongued tree agent, with his rubber-tired rig, carrying some three or four grafted trees, to show to his would-be customers, who impudently asks you to dig up your orchard and plant his budded trees is still plying his game, first in one state, then another. He carries no circulars or catalogue (this alone ought to cause an inquiry). He invariably selects specimens that are poor (if not grafted purposely) and shows them to effect his sale of budded trees. Here is the defect. If he would equally show the more injurious defect of budded trees (see half-tone in upper left-hand corner) he would not dupe the purchaser, for it would be apparent to any intelligent tree planter that a defect, whether above ground or below, is a defect nevertheless, and as one of the best orchardists in Lawrence county, Mo., puts it, that he prefers whatever defect there must necessarily be in all methods of propagation that it be under the ground and NOT AT THE TOP OF THE GROUND, as must be in budded apple trees.

Just take one of their budded trees, and cut out a section as in the illustration, and you will find THE DEFECT EXPOSED to your entire satisfaction and the other fellow's discomfort. Most nurserymen carry a portion of their varieties in apple either in budded

or grafted trees, as the case may be, and if you will write them, you can get a list of varieties of either method of propagation, and they will not cost 35 to 50 cents either, but will be furnished at the listed prices, which are generally one-fourth of the price these fellows ask. Try it; expose the defect.

Give this matter your unprejudiced research and you will ultimately come to the conclusion, as Prof. T. V. Munson puts it: "That process which in the shortest time puts the tree upon its own roots in a healthy condition is the best." That rule naturally follows from the law of vegetable growth that all the other parts of a tree or plant depends upon its own leaves for sustenance, and takes on gradually characteristics in harmony with the life process of the leaf. Hence the cutting, when it will not root of itself, is the most natural way of reproduction, next to that from the seed itself. But if the scion will not grow as a cutting itself, then a foster root must be supplied to sustain the cutting until it forms roots of its own. This is most perfectly done with a short piece of healthy root comparatively free from sprouting eyes, carefully fitted to the lower end of a long scion," and which is now considered the best for uniformity of fruit bearing, as well as keeping qualities.

The Various Habits and Growth of Trees.

Upon this we feel necessitated to give some information, especially since there is frequently dissatisfaction expressed by purchasers upon receiving their trees when they are not all of equal size and beauty. The unsightly, crooked and small trees are looked upon as being inferior, and the nurseryman is charged with fraudulent motives for having sent out such trees, while at the same time he may have acted for the benefit of the purchaser and have given him the most costly as well as the most valuable trees—for there might be a large number of handsome, rapid growing varieties, collected for cultivation, which would be the most profitable for nurserymen to cultivate, but would they do for the purchaser? From the fact that such can be grown fit for sale in two or three years and upon clearing off the nursery grounds no refuse trees will be found, while among the crooked growers many will have to be left in the digging on account of being too extremely crooked to send out. And there will be still more among the feeble growers, for many of them are not large enough at even four or five years. The loss of these often reaches 25 per cent left on the grounds to be cleaned up and burned.

The question may here be asked: Why do not nurserymen cultivate only the nice, thrifty growers? Because those planting trees are desirous of getting good fruit, and we must raise those recommended by our leading horticulturists and fruit-growers, also such as our own markets and palates say are good. These recommend certain varieties, of which the crooked and feeble growers are recommended as well as the handsome, irrespective of the habit and growth of the tree, from which the nurseryman is induced to cultivate it, not because he takes delight in sending out inferior trees, as they are generally called, to receive

the abuse of the people, but as a candid, reflecting man, conscious of his responsibility to the community at large for the dissemination of good fruit, his utmost endeavor—first, to cultivate good fruit, and, second, as nice trees as those fruits can be made to grow—not only such as will dazzle the eye in size and beauty, but such as have all the good qualities of which the leading characteristics are flavor and productiveness—in short, most profitable—which, as he well knows, not only benefits his fellowman, but greatly involves his own personal welfare in after time, as it requires more than mere raising of showy trees to preserve or establish a nurseryman's reputation. However, the free and rapid growing of a variety (when accompanied with good fruit) is an important consideration in favor of its extensive cultivation.

ADVERTISEMENT.

Our Nurseries are situated on the western slope of the Ozark mountain range, at an elevation of over 1,150 feet above the sea (about 800 feet above St. Louis), adjoining open prairie lands. These conditions, together with the character of soil, will at once convey the superior advantages we hold for growing Nursery Stock of the best quality, and maturing same in advance of the more northern and southern states.

Having handled some of the products of a number of the leading nurseries east, north and south the past few seasons, we are convinced that we have better matured stock here by October 10th than many nurseries can claim for same time. The conditions confronting us have brought about the necessity of growing a more complete line of stock, and which we now claim to have, thus assuring our patrons of as good quality, well matured, and as complete in assortment as can be found in any one nursery.

TO OUR FRIENDS AND PATRONS.

We sincerely thank all our customers and friends who have so generously patronized us in this and former years, for your kind favors. We appreciate them, we assure you, and shall always strive to make your dealings with us both pleasant and profitable.

We hope to hear from all our old customers and friends during the coming season, and from as many new ones as we can make it an object through OUR PRICES AND MANNER OF DEALING DIRECT WITH THEM, to kindly favor us with their orders.

We give our attention wholly to the Nursery business—no other interests conflicting. Aided with thirty years' experience in the most approved methods of growing and handling nursery products, customers can rely on receiving the benefit of our large experience. We confidently ask the attention of our patrons to our stock, and trust when possible they will look through it and see what we have. Our grounds are open and free to all visitors, except Sunday.

THE GREATEST CARE being taken not to send out anything that is not true to name, holding ourselves ready to replace or refund upon proof, equal to the amount of first cost of trees, etc., that prove untrue, but to no greater amount.

REFERENCES.—That we are in actual and permanent business, we deem it only fair to place the information regarding the responsibility of the firm with whom you entrust your orders and commands:

REFER TO Messrs. Theo. Sabert, Cashier State Bank, Sarcoxie; H. B. Boyd, Cashier First National Bank; Reynolds & Son, S. P. Burris, Red Front Mercantile Co., or any business house in Sarcoxie.

TO CORRESPONDENTS.

If you have sent us an order with remittance and do not hear from us in a reasonable time, write again. We invariably acknowledge all orders received by postal card or letter and give an ORDER NUMBER for reference, which you will please preserve.

We answer all correspondence relative to our line of business that is not or cannot be answered in our printed list; but anything about growing or planting, where a reply is wanted, must be so written as to allow us to insert answers.

RECEIPTS.—The receipt of every remittance is promptly acknowledged by us. Each order received is duly numbered, and as the receipts given mention said number, customers preserving their receipts can readily refer to any order sent us by simply giving the number and we can instantly refer to the original order, which we preserve for a number of years for future reference. We hope each purchaser will save their receipts and when making inquiries concerning any order always give its number, for without it requires time and patience to look it up.

WHAT TO ORDER.

While leaving every one to make his own choice, we advise you not to order too many varieties, whether intended for domestic use or marketing. Select sparingly such varieties as have been favorites in the localities from which you came, especially if you are remote

Read Terms and Conditions of Sale Before Ordering.

from there, but rather select such varieties as are suited to the locality you intend to plant in. In doing this you may have to give up some favorite sort, but it will be an easy matter when you see how unprofitable and out of season your favorites generally become.

We desire also to call your attention to those so-called Fruit Unions—that agree to plant orchards for you and claim to know better what you want, and are willing to select for you; your successful neighboring fruit-grower is better able to tell you what to plant than any nurseryman or fruit-grower remote from where you desire to plant.

EXECUTION OF ORDERS.

We endeavor to execute all orders promptly and as nearly as possible in rotation as received, giving each order the most scrupulous care and attention to insure reasonable satisfaction. Spring shipping brings with it an unusual amount of items to be looked after, and notwithstanding we have a largely increased force of men, orders are liable to be delayed some days. Then, again, the mails are sometimes missent, or delays occur on the road that we are not responsible for. Occasionally errors occur in the hundreds and even thousands of details incident to our business, but we are always ready to rectify them on proper proof, but cannot do so unless informed just what the trouble is within the limited time printed on the invoice sheet. When the bill and goods are received, check it up at once; if correct, give proper credit without delay; if not correct, advise us of the fact then and there. See Article II, Terms and Conditions of Sale.

Adjustments are easy while the details are fresh in mind, but we cannot be blamed for looking with suspicion upon complaints made weeks afterwards or in refusing to consider them.

SECURE YOUR SELECTION BY SENDING ORDERS EARLY.

If our friends on receiving this catalogue will make a list of trees and plants they want, and send their orders at once, we can then reserve, until proper shipping season, such stock that may be on hand at time order is received. Orders will be booked by complying with terms and conditions of sale.

PACKING AND DELIVERING SEASON.

Which generally commences about October 10, in the fall; for spring, from open ground, about February 10 (often earlier). For California and the South we pack and ship in mild weather from Storage House all winter, and it gives ample time for long shipments. Past experience has demonstrated the fact that nursery stock arrives in best condition, when long time is required in transit, if shipped when stock is in most dormant condition—being during the months from November to February

CARE OF TREES ON ARRIVAL.

As soon as you unpack trees, having your trenches previously dug to receive them, set in a slanting position, then fill in around the roots, treading the soil sufficiently to make it firm, and avoid having bunches set side by side without soil between them. This is a serious drawback attending the growth of trees, as much damage results from having trees "heeled in" with openings, allowing drying or freezing before planting, and the nurseryman is charged with having sent poor stock, when the fault is in mishandling after arrival.

Should trees arrive in a shriveled condition, after a long delay in shipment, take out all shriveled trees, and bury tops and all for about ten days, to restore them. Should trees arrive in a frozen condition, place in the cellar, to allow gradual thawing, or bury in soil until thawed out. Do not expose stock to hasten thawing. It is most essential to let frozen stock thaw out gradually in a dark, cool place; therefore avoid exposure to sunlight or heat when transferring to a cool place.

FALL PLANTING.

The spring planting season is often of such short duration that much intended work is necessarily omitted or postponed. In the fall there is an abundance of time to plan and plant, and the work therefore can frequently be done as satisfactorily as in the spring.

The once prevalent notion that fall planting is not advantageous has proven to be erroneous, and, with the exception of a few varieties of evergreens, almost everything called hardy can be planted successfully in the autumn, except in some regions where the winters are extremely severe, or in exposed situations, in which case spring planting is absolutely necessary.

Plant as early after the first killing frosts as the trees become thoroughly dormant, thereby avoiding delay until the spring months. In a climate like this, where the severe cold is often broken, trees planted in November or December will before spring have formed new roots sufficient to give it a firm start in the ground, and will grow off more rapidly when spring growth begins. Trees can be planted up till April, but the success is rendered less certain than if planting is done in fall or early winter.

No Agents, No Trade Marks, No Seals.

We are often asked if we employ agents to sell our trees and plants. In order to avoid much correspondence we here state that we have not since we began business employed any agents.

Our efforts are directed toward the growing of FRUIT TREES, Forest and Evergreen Trees, and Plants, which shall be the best that can be produced. Hence we look to the growing as of first importance, and offer our stock to the Wholesale and Retail Trade through our price-list direct, our only authorized agent.

We desire the patronage of all fruit-loving people, of men who know the value of fruit trees and plants when bought. We want the patronage of careful men who will take care of fruit trees when bought. We want to sell to men who sell again and keep themselves familiar with the best varieties and needs of a planter.

If you desire to sell stock, there is nothing to prevent you from soliciting orders on your own account, and you can sell at prices that will remunerate you, according to your zeal and energy.

Should you purchase trees at wholesale to sell again, we have no objection to your saying that your trees (as much as are purchased of us) are from our Nurseries, but in no case can other stock be represented as our growing. Our trees and plants are guaranteed true to name to the purchaser only, after which our control ceases; hence our responsibility also.

TRADE MARKS.

No one can maintain a trade mark on organic articles, as trees and plants. The U. S. Circuit Court of Appeals has decided this. See Hoyt vs. J. T. Lovett Co., 71 Fed. 173.

SEALS.

Seals offer no protection after first hands.

Read Carefully Before Ordering the Terms and Conditions of Sale.

1. **TERMS.**—The prices in this list are under the following conditions, and for CASH WITH ORDER. Sales, however, to known, responsible, prompt-paying customers we will book during the shipping season, and forward orders to be paid for promptly on receipt of invoice, no countermands accepted. Parties unknown, or with whom we have had no business transactions will please send cash or satisfactory security with their orders. Stock ordered booked in advance of shipping season, to be reserved, must be accompanied with remittance of AT LEAST ONE-THIRD OF THE LIST PRICE; balance to be paid when shipping season arrives. Orders so booked we will name list of stock reserved, and such will be held subject to agreement, unavoidable accidents excepted. When any accidents have occurred notice will be promptly given, stating nature of loss or damage. Orders given for future shipment, without earnest money accompanying same, will only be entered subject to stock ordered being on hand when shipping time arrives.

2. **TELEGRAPH ORDERS.** to receive prompt attention, when from unknown parties, must place sufficient deposit subject to our order with bank or express agent, and note same in message.

3. **GOODS SENT C. O. D.** when half the amount is sent us or deposited with bank or express agent. When deposited it must be certified and certificate sent with order.

4. **REMITTANCE AT OUR RISK,** if made by Postal Money Order on Sarcoxie, Mo., or money by express prepaid or draft on New York, St. Louis or Chicago. Drafts or checks on other points must be drawn with exchange; otherwise we will not accept them at par. Drafts and money orders should be made payable to JAMES B. WILD & BROS.

5. **ANY REMITTANCE IN EXCESS** of invoice will be promptly returned, or held subject to order.

6. **ORDERS AND CONDITIONS OF SALE.**—At prices in this list, not less than 5, 10, 50, 100, 500 or 1,000 of a sort and size of a class will be furnished at the respective 5, 10, 50, 100 or 500 rate, except when a class is offered in assortment, then 10 or more of a sort in that class may be selected in making up the 100 or 500 of that class to secure the 100 or 500 rate on same. Less than 10 of a sort will be charged ten cents to the proportion of the 10 rate. For example: When the 10 rate is \$1 for 10, 5 will be furnished for 60 cents or 1 for 20 cents. Further, prices herein quoted are for your selection of sorts at respective prices given, but we reserve the right to fill in a smaller or larger size (or age) than ordered, should we be out of the size or age of sorts wanted, charging therefor at the respective size or age of sorts used in filling the order. Parties ordering should state preference of a larger or smaller grade, so that we can be governed accordingly. Uniform grades cannot be guaranteed when sorts ordered are to be strictly adhered to. Orders joined with needed specifications not quoted or agreed to in this price list will not be entertained, except by special agreement in writing. When sorts are ordered that we do not offer in this list, we will exercise our judgment and send as nearly similar sorts as we have at command.

7. **GRADES.**—Size, height—or caliper measurements—are taken from the collar near the root, and are stated for guidance only. Slight variations may sometimes occur. Reasonable customers will understand that it is not calculated to mean measurement of each plant

Read Terms and Conditions of Sale Before Ordering.

or tree. If any items in sizes, ages or height requested are sold out, then the most available will be observed as filling the desired place, unless prohibited in the order given.

8. SAMPLES, when ordered, will be invoiced at list rates, but subject to a rebate to equal prices given on order placed through same.

9. BOXING, BALING AND PACKING.—Prices herein do not include same. A moderate charge will be made for such, but no charge for delivering to railroad depot or express office here. We charge for boxes (which includes the packing) as follows:

8x 8 inches by 8 ft.,	\$. 75	20x20 inches by 8 ft.,	\$1.85	28x28 inches by 10 ft.,	\$2.95
10x10 inches by 8 ft.,	.90	20x20 inches by 9 ft.,	2.05	30x30 inches by 8 ft.,	2.80
12x12 inches by 8 ft.,	1.10	20x20 inches by 10 ft.,	2.25	30x30 inches by 9 ft.,	3.00
12x12 inches by 9 ft.,	1.20	22x22 inches by 8 ft.,	2.00	30x30 inches by 10 ft.,	3.25
12x12 inches by 10 ft.,	1.25	22x22 inches by 9 ft.,	2.20	32x32 inches by 8 ft.,	3.00
14x14 inches by 8 ft.,	1.40	22x22 inches by 10 ft.,	2.35	32x32 inches by 9 ft.,	3.25
14x14 inches by 9 ft.,	1.50	24x24 inches by 8 ft.,	2.20	32x32 inches by 10 ft.,	3.40
14x14 inches by 10 ft.,	1.80	24x24 inches by 9 ft.,	2.45	34x34 inches by 8 ft.,	3.20
16x16 inches by 8 ft.,	1.60	24x24 inches by 10 ft.,	2.55	34x34 inches by 9 ft.,	3.50
16x16 inches by 9 ft.,	1.75	26x26 inches by 8 ft.,	2.35	34x34 inches by 10 ft.,	3.75
16x16 inches by 10 ft.,	1.95	26x26 inches by 9 ft.,	2.55	36x36 inches by 8 ft.,	3.40
18x18 inches by 8 ft.,	1.75	26x26 inches by 10 ft.,	2.75	36x36 inches by 9 ft.,	3.65
18x18 inches by 9 ft.,	1.90	28x28 inches by 8 ft.,	2.55	36x36 inches by 10 ft.,	4.00
18x18 inches by 10 ft.,	2.10	28x28 inches by 9 ft.,	2.75		

And in proportion for larger or smaller boxes. Bales from 10 cents to \$3.00 each. Boxes ordered paper lined, or double lined and filled with sawdust, will be extra cost. Packing of car load lots in bulk with ordinary straw or hay packing, from \$5.00 to \$8 per car; where special material, as moss, and extra packing is ordered the same will be at additional cost of material and labor required.

10. TRANSPORTATION.—Our responsibility ceases on the shipment of goods in good order and transmittal of Bill of Lading to consignee; and payment of bill is in no instances to be subject to arrival or non-arrival of goods at destination, though we will at any and all times use our utmost endeavors to trace up any missing goods.

NOTE: In order to secure third-class freight rates under ruling of the "Western Classification" on Nursery stock, boxed (not baled), shipper must release to value of \$5.00 per cwt., and in order that our patrons may have the benefit of the lower freight rates we will release and guarantee freight charges through for them, unless instructed on order not to do so. Freight charges not guaranteed must be prepaid, or forwarders will not accept goods for shipment.

11. RECLAMATION.—Claims for deduction from whatever cause MUST BE MADE IMMEDIATELY ON RECEIPT OF GOODS. No storage claim entertained unless itemized list of all stock as found is promptly submitted to us. Check off goods when you unpack, and then and there note carefully on a memoranda, itemized as to sort, size labeled, with number of bunches and number in each bunch received, thereby giving a detailed report of stock as found. Don't state so and so was short, without stating also what you did get. Remember, we, too, want to know what you base your claims upon, and must have facts, as you may be over on some items, or mistook one sort for another, or you may have intended to order such and such, or more of some, but failed to note same on order as sent in. Further, in case of damaged stock and where you have just reason to believe that fault rests with us for its condition, under such conditions we here request that such stock be immediately taken proper care of, so that no further damage may result, AND AT ONCE NOTIFY US OF THE FACTS, so that we may have opportunity to direct its disposition. Claims WILL NOT BE ENTERTAINED after original bundles or packages are broken and part of said goods used or disposed of, and claim set up afterwards, to seek reductions on same. Your failure to do so must exempt us from further responsibility in the matter. Adjustments are easy while all the details are fresh in mind, but we cannot be blamed for declining claims upon complaints made weeks afterwards.

12. INSURANCE.—At the prices in this list we do not guarantee stock to live, nor absolutely free from insect pests or disease common to respective line of stock offered; nor will we replace free of cost that which dies or fails to grow; nor can we, in view of the various incidents that it is subject to, as the success or failure depend largely upon climatic conditions, manner of planting, after-care, etc. Having been in the nursery business for thirty years at Sarcoxie, and our business having increased with wonderful rapidity, now covering many hundred acres in a body devoted to the Nursery proper, is sufficient evidence that we are up with the times and have won the confidence of the patronizing public, and number among our patrons the leading nurseries of the United States, Canada and Mexico. When a guarantee is wanted, exceptional to these terms then the prices will necessarily be based on the nature of the risks to be assumed.

Certificate of Inspection will be Furnished with Each Shipment

13. FUMIGATION OF STOCK.—Same will be done when requested to do so, or where a state to which the stock is to be shipped makes it compulsory to do so. Formula to be used will be such as may be recommended by state or states; but it must be understood that we will assume NO RESPONSIBILITY for results when we have carried out such instructions.

14. **GUARANTEE OF GENUINENESS.**—While we exercise our greatest diligence and care to have all our trees, etc. true to label, and hold ourselves in readiness, on proper proof, to replace all trees, etc. that may prove untrue to label free of charge, or refund amount paid, it is mutually understood and agreed to between the purchaser and ourselves that our guarantee of genuineness shall in no case make us liable for any sum greater than that originally received for said trees, etc. that shall prove untrue, and orders are accepted on no other terms.

15. **POSITIVELY NO DEVIATION** from the foregoing terms, unless made by special agreement in writing, setting forth in specific terms, where at variance to the foregoing, and in no case affecting or annulling the above guarantee.

16. The publication of this list abrogates previous quotations.

Give Plain Directions for Shipping.

Don't forget to write postoffice address plainly, also freight or express, if different from postoffice. Purchasers will confer a favor by stating the manner in which they wish their goods sent—freight or express—also route. When none are designated we forward to the best of our judgment; but in no case do we assume any responsibility after the packages are shipped.

PROMPT SHIPMENTS.—To meet this want we have adapted our packing house to every convenience for the rapid and thorough dispatching of orders.

WEIGHT OF TREES PACKED can only be given approximately; 1,000 trees packed for shipment, ordinary weight: 1 to 2 feet, 150 to 200 lbs.; 2 to 3 feet, 300 to 400 lbs.; 3 to 4 feet, 500 to 650 lbs.; 4 to 5 feet, 900 to 1,200 lbs.; 5 to 6 feet, 1,500 to 2,000 lbs.; 5 to 7 feet, three-year-old, 2,500 to 3,500 lbs.; 6 to 8 feet, 3000 to 4,000 lbs. Evergreens weigh more.

A CAR LOAD WILL HOLD, when packed in bulk in box cars, from ten to twelve thousand 5 to 6 foot trees; from fourteen to sixteen thousand 4 to 5 foot trees, and from six to eight thousand 5 to 8 foot trees, and from one-fourth to one-third more when boxed.

Coal or flat cars boxed up will hold about double the quantity of ordinary cars. Cost of boxing up a coal car is about \$30 per car.

To arrive at the approximate cost for boxing or baling we submit the following:

On 6 to 8 foot trees.....	\$ 9.00 to \$12.00 per 1000	\$2.50 to \$3.00 per 100	50c to 60c per 10
On 5 to 6 foot trees.....	7.00 to 9.00 per 1000	1.50 to 2.00 per 100	30c to 40c per 10
On 4 to 5 foot trees.....	5.00 to 7.00 per 1000	.90 to 1.25 per 100	20c to 25c per 10
On 3 to 4 foot trees.....	3.00 to 5.00 per 1000	.50 to .75 per 100	15c to 20c per 10
On 2 to 3 foot trees.....	1.50 to 3.00 per 1000	.25 to .50 per 100	15c per 10
On 1 to 2 foot trees.....	.75 to 1.50 per 1000	.20 to .25 per 100	15c per 10
Plants, 6 to 7 inches.....	.30 to .50 per 1000	.10 per 100	10c per 10
Vines and Stw. plants....	.30 to .50 per 1000	.10 per 100	10c per 10

The approximate cost for boxing and baling transplanted evergreens:

On 5 to 6 ft. trees....	\$60.00 to \$70.00 per 1000	\$6.00 to \$7.00 per 100	\$1.00 to \$2.00 per 10
On 4 to 5 ft. trees....	30.00 to 60.00 per 1000	3.00 to 6.00 per 100	.75 to 1.50 per 10
On 3 to 4 ft. trees....	10.00 to 30.00 per 1000	2.00 to 3.00 per 100	.50 to .75 per 10
On 2 to 3 ft. trees....	7.00 to 9.00 per 1000	1.50 to 2.00 per 100	.30 to .50 per 10
On 1 to 2 ft. trees....	3.00 to 5.00 per 1000	.50 to .75 per 100	.20 to .30 per 10
On 8 to 12 in. trees	.75 to 1.50 per 1000	.20 to .30 per 100	.10 to .20 per 10

Seedling evergreens:

On 6 to 8 in. trees.....	\$.50 to \$.75 per 100	\$.10 to \$.15 per 100	\$.10 per 10
--------------------------	--------------------------	--------------------------	---------------

No package put up for less than 10 cents.

Rules for Ascertaining the Number of Plants Required for One Acre of Ground, which Contains 43,560 Square Feet.

Multiply the distance in feet between the rows by the distance the plants are apart in the row, and their product will be the number of square feet for each plant or hill, which divided into the number of feet in an acre will show how many plants or hills the acre will contain, thus:

Blackberries.....	8 ft. by 3 ft.—	24	43,560	1,815 plants
Raspberries.....	7 ft. by 3 ft.—	21	43,560	2,074 plants
Strawberries (for field culture).....	4 ft. by 2 ft.—	8	43,560	5,445 plants
Strawberries (hill culture).....	3 ft. by 16 in.—	4	43,560	10,890 plants
Dwarf Pears.....	10 ft. by 10 ft.—	100	43,560	435 trees
Peaches.....	18 ft. by 18 ft.—	324	43,560	134 trees
Standard Pears and Cherries.....	20 ft. by 20 ft.—	400	43,560	108 trees
Apples.....	30 ft. by 30 ft.—	900	43,560	48 trees

Read Terms and Conditions of Sale Before Ordering.



Above cut shows two controverted apples, Gano and Reagan's Red (renamed Black Ben Davis). "After Guthrie grafted it it was called 'Reagan's Red,' and many people still call it by that name."—John F. Reagan, before Arkansas Committee. See page 129 of the twenty-fourth session report of the Arkansas State Horticultural Society's meeting, held at Van Buren, Ark., Jan. 12, 13 and 14, 1904.

The report further shows that Alexander Black made homestead entry Sept. 9, 1869, final certificate issued Nov. 6, 1874, and that he (Black) sold it to one J. S. Eally, Dec. 3, 1877. No record is given of Eally's transfer, but the statement of the widow of J. S. Eally shows that they only lived on the place a month.

Next we find that John D. Moore sells to John F. Reagan, March 8, 1883.

From this it is apparent that Moore owned the place from about 1877 to 1883 (during which time the identity of the tree was still unknown, not having come into bearing), and from Mr. and Mrs. J. F. Reagan's statements it is evident that the tree mentioned did not have an existence prior to 1879 (see their statement), showing conclusively from the records that Alexander Black sold the farm at least two years before the tree could have had an existence, and could, therefore, not have known of the tree. Consequently this WOULD NOT ENTITLE ONE TO NAME THE APPLE FOR HIM. As Mrs. J. F. Reagan is the one who had the apple perpetuated by inducing Mr. Geo. Guthrie to graft it, IT IS ONLY FAIR that the name Reagan should be adhered to as the ORIGINAL and prior name, by which it was locally known, and also known to others. Arkansas horticulturists should adhere to the original name. This would also be in accord with the rules of the American Pomological Society, and all other horticultural societies which are in co-operation. Whether it is a new variety HAS NOT been satisfactorily determined. All tests made at the World's Fair by pomologists of national reputation show that there is no practical difference between the varieties in question, and from our own investigation we are satisfied that STRIPED APPLES ARE NO EXCEPTION, as has been sometimes claimed. This distinction has entirely failed in designation, further none have shown to be "dark fleshed as Winesap."

800,000 Apple Trees in Assortment.

NOTE: Caliper measurements average about one-eighth of an inch per given foot in height.

Certificate of inspection will be furnished with each shipment.

Before making out your order read Article 6, Terms and Conditions of Sale.

Boxing or baling and packing at cost.

See Table of Rates, page 31 of this catalogue.

APPLE.	Each.	Per	Per	Per	Per	Per	Per
		5.	10.	50.	100.	500.	1,000.
Extra 1 yr., usually 2 1/2 ft. and all up.....	\$.16	.40	.60	\$2.75	\$4.50	\$18.50	\$35.00
Standard 1 yr., usually 2 to 2 1/2 ft.....	.15	.35	.50	2.50	4.00	16.50	30.00
Medium, 1 yr., usually 1 1/2 to 2 feet.....	.14	.30	.40	2.25	3.50	13.50	25.00
Light 1 yr., usually 1 to 1 1/2 ft.....	.13	.27 1/2	.35	1.75	2.75	11.00	20.00
XX 2-3 yr., 5 ft. and up in height, 3/4 in. cal.....	.20	.60	1.00	4.00	7.00	28.50	55.00
Extra 2-3 yr., 4 1/2 ft. and up, 5/8 in. cal.....	.19	.55	.90	3.50	6.00	26.00	50.00
Extra 2-3 yr., 4 1/2 ft. and up, not branched.....	.18	.50	.80	3.00	5.00	21.00	40.00
Standard 2-3 yr., 4 to 4 1/2 ft. and up, 1/2 in. cal.....	.17	.45	.70	2.75	4.50	18.50	35.00
Standard 2-3 yr., 4 to 4 1/2 ft., not branched.....	.16 1/2	.42 1/2	.65	2.50	4.00	16.00	30.00
Medium 2-3 yr., 3 to 4 ft. in height, 3/8 in. cal.....	.16	.40	.60	2.25	3.25	13.50	25.00
Medium, 2-3 yr., 3 to 4 ft., not branched.....	.15 1/2	.37 1/2	.55	2.00	3.00	12.50	22.50
Light 2-3 yr., 2 to 3 ft. in height.....	.15	.35	.50	1.75	2.75	11.00	20.00
*XXX heavy 3 yr. entirely, 1 in. caliper.....	.20	.60	1.00	3.50	6.00	26.00	50.00
*XX 3 yr. entirely, 3/4 in. and up caliper.....	.19	.55	.90	3.25	5.50	23.50	45.00
*Extra 3 yr. entirely, 5/8 ft. and up in height.....	.18	.50	.80	3.00	5.00	21.00	40.00
*Extra 3 yr. entirely, 5 ft. and up in height.....	.17	.45	.70	2.75	4.50	18.50	35.00
*Standard 3 yr. entirely, 4 1/2 ft. and up in h't.....	.16	.40	.60	2.50	4.00	16.00	30.00
*Standard 3 yr. entirely, 4 ft. and up in h't.....	.15	.35	.50	2.25	3.50	13.50	25.00

New sorts, except otherwise noted, 2 cents per tree higher than above quotations.

*Note.—In order to obtain the THREE YEAR ENTIRELY RATES there will be no two year trees included in orders made for three year stock. Orders will go short on this where we cannot fill in three year trees when three year are called for.

List of Standard Sorts Apple Offered at Above Rates.

NOTE.—1, 2, 3 denotes ages we have in each sort. Varieties in full faced type in large supply.

List of Summer Apples Offered at Above Rates.

A. S. Pearmain	1 2	Early May.....	1 2 3	Red Astrachan	1 2
Bietigheimer.....	1	Early Ripe	1	Red June	1 2 3
Benoni	1 2 3	Early Colton	1 2 3	Sweet Bough	1 2 3
Chenango	1 2 3	Fanny	1 2 3	Sweet June	1 2 3
Cole's Quince	1	Golden Sweet	1 2	Sops of Wine.....	1
Duch. of Oldenburg.....	1 3	Horse (Yellow)	1 2 3	Summer Queen	1 2
Early Harvest	1 2 3	Livland Raspberry	1 2 3	Yellow Transparent	1 2

List of Fall Sorts Apples Offered at above Rates.

Bailey Sweet	1	Lowell	1	Shannon Pippin	1 2 3
Fall Pippin	1 2	Maiden Blush	1 2 3	Switzer	1
Fameuse (Snow)	1 2 3	Pa. Red Streak.....	1 2 3	Tolman Sweet	1 2 3
Falawater	1 2 3	Pound Sweet	1 2 3	Twenty Ounce	1 2 3
Gravenstein	1 2 3	Rambo	1 2 3	Wealthy	1 2 3
Grimes' Golden	1 2 3	Ramsdell Sweet	1 2 3		
Jonathan	1 2 3	R. I. Greening.....	1 2 3		

List of Winter Sorts Apples Offered at Above Rates.

Ark. or M. B. Twig.....	1 2 3	Lady	1	***Reagan (Ark.)	1 2 3
Arkansas Black	1 2	L. Red Romanite	1 2 3	(**Black Ben Davis)	
Baldwin	1 2 3	Milam	1 2 3	Rome Beauty	1 2 3
BEN DAVIS	1 2 3	Minkler (Nero)	1	Seedless (novelty)	1
***Collins	1 2 3	Missouri Pippin	1 2 3	Salome	1 2 3
(**Champion)		Mother	2	White Pippin	1 2 3
Gold. Russet, Eng.....	1 2 3	Newtown Pippin	1 2 3	W. W. Pearmain	1 2 3
Gano	1 2 3	Northern Spy	1 2 3	Wolf River	1 2 3
Geneton (Rawls)	1 2 3	N. W. Greening.....	1 2 3	Winesap	1 2 3
Gill's Beauty	1	Payne's Keeper	1 2 3	Yellow Bellflower	1 2 3
Huntsman	1 2 3	Peck's Pleasant	1 2	Yerk Imperial	1 2 3
Ingram	1 2 3	Red Limbertwig	1 2 3	Yates' Winter	2 3
Kinnaird's Choice	1 2 3				

List of Crab Apples Offered at Above Rates.

Excelsior	1	Martha	1 2 3	Van Wycks Sweet.....	1 2 3
Florence	1 2 3	Red Siberian	1 2 3	Whitney No. 20.....	1 2 3
Gen. Grant	1 2	Soulard	3	Yellow Siberian	1 2 3
Hyslop	1 2 3	Transcendent	1 2 3		

New and Rare Sorts Apple Trees.

The following APPLES—NEW AND SCARCE SORTS—2 cents per tree higher, except where marked *, where they are 5 cents above standard quotations.

***Beach (Ark.)	1 3	Hastings (Ark.)	1 2 3	Patton Greening	1 3
(**Lady Pip, Ap. of Com.)		Highfill Blue (Ark.).....	2 3	*Quick	3
Bismarck	1 2	Howard's Sweet	1 2 3	Red Bellflower	2 3
*Black Burgess (Ark.)	1 3	Ladies' Sweet	1	Sandbrook	1
Boiken	1 2 3	*Marsh	1 3	Stayman's Winesap	1 2 3
*Dees Appr'nt-Jon.xArk.		*Mo. Crab	1 3	Surprise	2
Black	1 2 3	Mason's Orange	1 3	Trade's Fancy	3
Downing's Wint. Blush.....	1 2 3	Mock (Ark.)	1 3	Virginia Beauty	1 3
Etris	2	Nixonite	1 2 3	Wandering Sap	1 2 3
Evans (Walker's Sw.)	1 2	Nordhausen	1 2	Winter Banana	1 3
Garden Seedling (Ark.)	1 3	***Oliver	1 2	*Wismer's Dessert	1
Gilbert	3	(**Senator)		Wilson June	1 3
Givens (Ark.)	1 2 3	Ozark.....	1 2 3		

**See Bulletins Nos. 8 and 56, U. S. Department of Agriculture, Division of Pomology.

***See Bulletins Nos. 49 and 60 of Arkansas Agricultural Experiment Station for correct names and renaming of these varieties. Also 24th Annual Report Arkansas State Horticultural Society, page 129. Statement of John F. Reagan: "After Guthrie grafted it it was called the 'Reagan Red,' and many people still call it by that name."



Block of Peach Trees (in Winter).

Price on PEACH TREES in Assortment, Standard Sorts.

Varieties marked (new), add 1 cent per tree higher in price.

	Each.	Per 5.	Per 10.	Per 50.	Per 100.	Per 500.	Per 1,000.
XX 1 yr., 4½ ft. and up, heavy.....	\$.20	\$.60	\$1.00	\$3.50	\$6.50	\$26.00	\$50.00
Extra 1 yr., 4½ ft. up.....	.19	.55	.90	3.20	5.50	23.00	45.00
Standard 1 yr., 4 to 4½ ft.....	.18	.50	.80	2.80	5.00	21.00	40.00
Medium 1 yr., 3 to 4 ft.....	.17	.45	.70	2.50	4.50	18.00	35.00
Light 1 yr., 1½ to 3 ft.....	.16	.40	.60	2.25	4.00	16.00	30.00

Two year, where we have them, same price as same size one year; dormant bud same as XX.

PEACH TREES—All are Branched Except in Light Size.**STANDARD SORTS PEACH.—Sorts in Full Face Type in Large Supply.**

Admiral Dewey	Greensboro	Munson Free
Arkansas Mammoth Cling	Heath Cling	Munson Cling
Alexander	Hiley (new)	Niagara (new)
Banner (new)	Hill Home Chief	Nix Late
Bernice (new)	Hill's Madera	Oldmixon Cling
Belle of Georgia	Holderbaum (new)	Russel (new)
Brigdon	Indian Blood Cling	Salway
Carman	Indian Blood Free	Slappy Early
Champion	Iron Mountain (new)	Snow Free
Chinese Cling	Japan Blood Dwarf	Stump the World
Crawford's Early	Klondike (new)	Summer Snow Cling
Crawford's Late	Krummel's October	Success
Crosby	Kalamazoo (new)	Strout's Early (new)
Doniphant (new)	Lewis Seedling	Victor
Elberta	Lemon Cling	Waddell
Everbearing (new)	Mountain Rose	Woodward
Family Favorite	Mamie Ross	Willett
Fitzgerald	Matthews' Beauty	Wright (new)
Guinn (new), dormant bud	Miss Lola	Wheeler's Early (dormant bud)

ORNAMENTAL PEACHES.

	Each	Per 5	Per 10	Per 50	Per 100
Blood Leaf—A very remarkable tree, with leaves red as the Purple Beach; quite ornamental, 1 and 2 years.....	\$.20	\$.60	\$1.00	\$8.00	\$15.00
Golden Cuba—Golden foliage during autumn, 4 to 6 ft., 1 and 2 yrs.....	.22	.70	1.20	6.50	12.00
Pyramidal—Form like the Lombard Poplar; 4 to 6 ft., 1 and 2 yrs.....	.20	.60	1.00	5.50	10.00
Double Camelia Flowering, any grade, 1 and 2 yrs.....	.25	.85	1.50	8.00	15.00
Double White Flowering, any grade, 1 and 2 yrs.....	.25	.85	1.50	8.00	15.00

APRICOTS ON PEACH.

	Each	Per 5	Per 10	Per 50	Per 100
Extra 1 and 2 years, usually 4½ feet and all up.....	\$.28	\$1.00	\$1.80	\$8.00	\$15.00
Standard 1 and 2 years, 3½ and up to 4½ feet.....	.25	.85	1.50	6.50	12.00
Medium 1 and 2 years, usually 3 and up to 3½ feet.....	.22	.70	1.20	5.50	10.00
Light 1 and 2 years, usually 1½ and up to 3 feet.....	.20	.60	1.00	4.50	8.00

SORTS APRICOT OFFERED.—Breda, Cluster, Royal, Russian No. 20, Superb, Sweet Russian.

Read Terms and Conditions of Sale Before Ordering.

NECTARINES.

	Each	Per 5	Per 10	Per 50	Per 100
Extra, 1 year from bud, 4½ feet and all up.....	\$.22	\$.70	\$1.20	\$5.50	\$10.00
Standard, 1 year from bud, 3 to 4½ feet.....	.20	.60	1.00	4.50	8.00
Medium, 1 year from bud, 3 to 4 feet.....	.18	.50	.80	3.50	6.00
Light, 1 year from bud, 1½ to 3 feet.....	.16	.40	.60	2.75	5.00

VARIETIES.—Boston, Stanwick and New White Nectarine.

PLUM ON PEACH

Standard sorts Plum. New sorts and Prunes, 2 cents per tree higher.

	Each	Per 5	Per 10	Per 50	Per 100
Extra, 1 and 2 year from bud, 4½ feet and up.....	\$.25	\$.85	\$1.50	\$6.50	\$12.00
Standard, 1 year from bud, 4 to 4½ feet.....	.22	.70	1.20	5.50	10.00
Medium, 1 year from bud, 3 to 4 feet.....	.20	.60	1.00	4.50	8.00
Light, 1 year from bud, 1½ to 3 feet.....	.19	.55	.90	4.00	7.00

STANDARD SORTS.—American: American Eagle, American Golden, Forest Garden, Hoosier, Newman, Rockford, Robinson, Wild Goose, Wyant, Wolf Free, Wayland. European Sorts: Deck's Blue Damson, Green Gage, Shipper's Pride, Sophie, Shropshire Damson, Coe's Late Red, Yellow Egg.

Japan Sorts: Abundance (Botan), Burbank, Chabot, Ogon, Red Nagate, Satsuma, Willard.

NEW AND SCARCE SORTS PLUM.—American: De Soto, Free Silver, Funk, Kroh. Klondike, Minco, Newton, Ward's October.

New Japan Sorts: America, Apple Plum, Bartlett Plum, Chalco, Gonzales, Shiro, Yosemite Purple.

PRUNE.—French, German, Giant, Hohman, Italian, Wiseman's.

STANDARD PEAR

	Each	Per 5	Per 10	Per 50	Per 100
Extra, 2 and 3 years, usually 5 to 7 feet.....	\$.35	\$1.35	\$2.50	\$11.00	\$20.00
Standard, 2 and 3 years, usually 4 to 5 feet.....	.30	1.10	2.00	8.00	15.00
Medium, 2 years, usually 3 to 4 feet.....	.25	.85	1.50	6.50	12.00
Extra, 1 year, usually 4 feet and up, not branched.....	.30	1.10	2.00	8.00	15.00
Standard, 1 year, usually 3 to 4 feet, not branched.....	.25	.85	1.50	6.50	12.00
Light, 1 year from bud, usually 1 to 2 feet.....	.22	.70	1.20	5.50	10.00

SORTS.—Standard Pear: ANJOU, BARTLETT, Clapp's Favorite, DUCHESS, KIEFFER, Flemish Beauty, Garber, Howell, Idaho, Lincoln, L. B. DE JERSEY, Seckel, Vermont Beauty, WILDER.

DWARF PEAR

	Each	Per 5	Per 10	Per 50	Per 100
XX, 2 and 3 year, 11-16 up caliper.....	\$.25	\$.85	\$1.50	\$6.50	\$12.00
Extra size, 2 and 3 years, 5-8 to 11-16 caliper.....	.22	.70	1.20	5.50	10.00
Standard size, 2 and 3 years, ½ to ¾ caliper.....	.20	.60	1.00	4.50	8.00

SORTS.—Dwarf Pear: ANJOU, BARTLETT, Clapp's Favorite, DUCHESS, Kieffer, L. B. De Jersey, Seckel, Vermont Beauty, Wilder Early.

CHERRY ON MAHALEB STOCKS

	Each	Per 5	Per 10	Per 50	Per 100
XX, 1 and 2 years from bud, usually 4 feet and all up....	\$.45	\$1.85	\$3.50	\$16.00	\$30.00
Extra, 1 and 2 years from bud, usually 3 to 3½ feet.....	.38	1.50	2.80	13.00	25.00
Standard, 1 and 2 years from bud, usually 2½ to 3 feet.....	.35	1.35	2.50	11.00	20.00
Medium, 1 and 2 years from bud, usually 2 to 2½ feet.....	.30	1.10	2.00	8.00	15.00
Light, 1 and 2 years from bud, usually 1 to 2 feet.....	.25	.85	1.50	6.50	12.00

SORTS AT ABOVE RATES.—Baldwin, Early Richmond, English Morello, Montmorency, Royal Duke.

ORANGE QUINCE—(One of the Best)

	Each	Per 5	Per 10	Per 50	Per 100
2 to 2½ feet.....	\$.16	\$.40	\$.60	\$2.75	\$ 5.00
2½ to 3 feet.....	.17	.45	.70	3.25	6.00
3 to 4 feet.....	.20	.60	1.00	4.50	9.00
4 to 5 feet.....	.25	.85	1.50	7.00	14.00

CURRANTS.

	Each	Per 5	Per 10	Per 50	Per 100
One and 2 year.....	\$.15	\$.35	\$.50	\$2.25	\$4.00

SORTS.—Cherry, Crandall, Fay's, Holland, North Star, Red Dutch, Victoria and White Dutch.

GOOSEBERRY.

	Each	Per 5	Per 10	Per 50	Per 100
Houghton, one year.....	\$.17	\$.45	\$.70	\$3.25	\$5.00
Pearl, one year.....	.19	.55	.90		

GRAPE VINES.

	Each	Per 5	Per 10	Per 50	Per 100
Agawam, 1 year, large, red, mid-season.....	\$.16	\$.40	\$.60	\$2.75	\$5.00
Agawam, 2 years old.....	.17	.45	.70	3.25	6.00
Brighton, 1 year old, medium size, red, early.....	.16	.40	.60		
Brighton, 2 years old.....	.17	.45	.70		
Champion, 2 years, large, early, black.....	.15	.35	.50	2.00	3.50
Concord, 2 years, large, black, mid-season.....	.14	.30	.40	1.50	2.50
Concord, 1 year old.....	.13	.25	.30	1.25	2.00
Delaware, 1 year old.....	.16	.40	.60	2.50	4.50
Elvira, 2 years, green to white.....	.16	.40	.60	2.75	5.00
Moore's Early, 2 years, large, black, early.....	.16	.40	.60	2.75	5.00
Moore's Early, 1 year old.....	.15	.35	.50	2.00	3.50
Niagara, 2 years, large, white, mid-season.....	.16	.40	.60	2.75	5.00
Niagara, 1 year old.....	.15	.35	.50	2.00	3.50
Norton's Virginia, 3 years, small, black, late.....	.22	.70	1.20	5.50	10.00
Norton's Virginia, 2 years old.....	.19	.55	.90	4.00	7.50
Worden, 1 and 2 year, large, black, early.....	.15	.35	.50	2.00	3.50
Wyoming, 2 year, large, red, early.....	.16	.40	.60	2.75	5.00

RASPBERRY.

	Each	Per 5	Per 10	Per 50	Per 100
Cardinal, purple (transplants).....	.13 1/2	.20	.35	.90	1.75
Conrath, black cap.....	.10	.15	.25	.60	1.00
Cumberland.....	.10	.15	.25	.70	1.20
Kansas, black cap.....	.10	.15	.25	.60	1.00
Brilliant, red.....	.10	.15	.25	.60	1.00
King, red.....	.10	.15	.25	.60	1.00
Miller's Red.....	.10	.15	.25	.45	.70

BLACKBERRY.

	Each	Per 5	Per 10	Per 50	Per 100
Ancient Britton.....	\$.10	\$.15	\$.25	\$1.00	\$1.50
Early Cluster.....	.10	.15	.25	1.00	1.50
Early Harvest.....	.10	.15	.25	.60	1.00
Erie.....	.10	.15	.25	1.00	1.75
King's Early.....	.10	.15	.25	1.00	1.75
Kittatinny.....	.10	.15	.25	1.00	1.50
Maxwell Early.....	.10	.15	.25	1.00	1.75
Lovett.....	.10	.15	.25	1.00	1.75
Ohmer.....	.10	.15	.25	1.00	1.75
Oregon Late.....	.10	.15	.40		
Snyder.....	.10	.15	.25	.60	1.00
Taylor's Prolific.....	.10	.15	.25	1.00	1.50
Wilson's Early.....	.10	.15	.25	1.00	1.50
Crystal White.....	.10	.15	.25	1.00	1.75
Iceberg.....	.15	.25	.50		

DEWBERRY—LUCRETIA.

	Each	Per 5	Per 10	Per 50	Per 100
Dewberry, Lucretia (field plants).....	\$.10	\$.15	\$.25	\$.60	\$1.00
Premo Dewberry (field plants).....	.10	.15	.25	.60	1.00
McDonald (ap't hybrid).....	.25				

NOTE.—The Lucretia Dewberry plants we offer are pure stock—the best; ripens here before Early Harvest Blackberry, and so far as quality and kind of fruit are concerned none of the above list of Blackberries can surpass it.

STRAWBERRIES



This is the most popular of small fruits. No fruit is so free from objectionable features as the strawberry. No thorns, no briars, easy of culture, easy to gather, and the most refreshing of all fruits, coming in before any other. Set plants in rows four feet apart and one foot apart in the rows. Cultivate well, and by fall the plants will have matted the ground well over. Mulch lightly in winter to prevent plants from heaving.

We endeavor to handle our plants in the very best manner. They are carefully cleaned, the roots straightened and neatly tied in bunches of fifty each, labeled and packed in paper and mossed.

Order strawberry plants early in spring by all means; as early as possible if to be shipped as freight; small lots or late in season must be sent by express. Have us book your orders early.

All varieties marked "p" are pistillate, (flowers without stamens), imperfect in blossom, and need at least every fourth row to be planted with some perfect or staminate sort, which find marked "s" to select from.

We can supply strawberry plants in the fall after October 20th, during November, and in the spring at 10, 100 and 1,000 rates. No plants furnished at 1,000 rate in the fall until after October 20th. The prices herein named are layer plants—not pot plants.

For number of plants required to set one acre for field culture, see notes, page 9.

Twelve Strawberry Plants will be mailed for 10 cents additional to 10 rate of respective variety; at the 100 rate, add 25 cents per 100 to cover postage, packing, etc.

Send for special prices for large quantities of Strawberry Plants.

(For delivery after October 20th only).

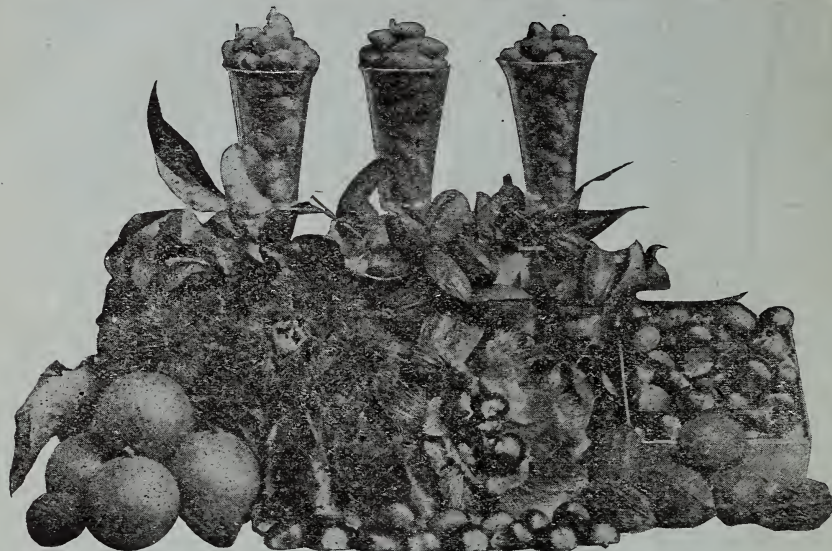
NOTE.—Varieties marked (p) are pistillate; varieties marked (s) are staminate.

	Per 10	Per 50	Per 100	Per 500	Per 1000
Aroma (s), large, glossy red, productive, profitable, mid-season to late	\$.15	\$.30	\$.50	\$1.50	\$2.50
Bismarck (s), large, similar to Bubach.....	.15	.30	.50	1.50	2.50
Bubach No. 5 (p), large, a great favorite.....	.15	.30	.50	1.75	3.00
Clyde (s), large, prolific.....	.15	.30	.50	1.75	3.00
Crescent (p), very productive, medium.....	.15	.25	.40	1.00	1.75
Duff (p), claimed to be like Lady Thompson.....	.15	.25	.40	1.25	2.00
Excelsior (s), medium to large; season of Michel; darker, firmer berry15	.25	.40	1.25	2.00
Gandy (s), large, standard, late, handsome, fine, best on timber land15	.30	.50	1.50	2.50
Haverland (p), large, long, productive, good market sort; mid-season to late.....	.15	.30	.50	1.50	2.50
Hero (s), fruit large, well formed.....	.15	.30	.50	1.50	2.50
Johnson's Early (s), ripens with Michel.....	.15	.25	.40	1.25	2.00
Klondike (s), large, late15	.25	.40	1.25	2.00
Lady Thompson (s), even size, good color, favorite in South; early15	.25	.40	1.75	2.00
Michel (s), earliest market sort generally known; good pollenizer15	.25	.40	.90	1.50
Ridgeway (s), large to very large.....	.15	.30	.50	1.50	2.50
Shuster Gem (p), large, productive.....	.15	.30	.50	1.50	2.50
Senator Dunlap (s), darker than Warfield, same season....	.15	.25	.40	1.25	2.00
Texas (s), much like Excelsior, larger.....	.15	.30	.50	2.00	3.50
Warfield (p), medium to large, dark red; best market and canning berry extant15	.25	.40	1.25	2.50

NEW.—COLUMBIA (p), (Wild's No. 176): A gem for the strawberry grower. This berry is the product of systemized crossing Warfield with Gandy, two of the best shippers. The variety possesses about all that is desired in a commercial variety, being very large and of a bright attractive color that appeals. As to size, it is uniformly large, season between Aroma and Gandy. It has been fruiting with us for five years and we are offering it with confidence.

	Each	Per 10	Per 50	Per 100	Per 500
Columbia, (p),	\$.30	\$2.00	\$9.50	\$18.00	\$75.00

Read Terms and Conditions of Sale Before Ordering.



MISCELLANEOUS FRUITS AND NUTS.

	Each	Per 5	Per 10	Per 50	Per 100
Almonds, hard shell, 3 to 5 feet.....	\$.22	\$.70	\$1.20	\$ 5.00	\$ 9.00
Almonds, paper shell, 4 to 6 feet.....	.30	1.10	2.00	8.00	
Almonds, paper shell, 3 to 4 feet.....	.25	.85	1.50	6.00	
Almonds, paper shell, 2 to 3 feet.....	.20	.60	1.00	4.50	
Sorts: Ne Plus Ultra, Texas Prolific.					
American Sweet Chestnut, 2 to 3 feet.....	.25	.85	1.50		
American Sweet Chestnut, 1 to 2 feet.....	.20	.60	1.00	3.50	
Chestnut, top-grafted, 3 to 4 feet.....	.60	2.60	5.00		
Sorts: Hannum, Numbo, Japan Giant, Ridgely, Scott.					
Chinquapin, dwarf chestnut, 2 feet.....	.20	.60	1.00		
Elaeagnus Longipes (Japan), two years.....	.20	.60	1.00	4.00	
Figs, in assortment, 2 to 3 feet.....	.25	.85	1.50	6.00	10.00
Figs, in assortment, 1 and 2 feet.....	.20	.60	1.00	4.50	8.00
Hickory, shell bark, 5 feet up.....	.30	1.10	2.00	8.00	
Huckleberry (Blueberry).....	.20	.60			
Hazelnut, from selected seed, 1 to 2 feet.....	.20	.60	1.00		
Mulberry, Russian, 7 to 8 feet.....	.35	1.35	2.50		
Mulberry, Russian, 6 to 7 feet.....	.30	1.10	2.00	9.00	
Mulberry, Russian, 5 to 6 feet.....	.25	.85	1.50	6.50	12.00
Mulberry, Russian, 4 to 5 feet.....	.20	.60	1.00	4.50	8.00
Mulberry, Russian, 3 to 4 feet.....	.18	.50	.80	3.50	6.00
Pecans, grafted, 1 year grafts.....	1.00				
Pecans (from selected Texas nuts), 4 to 5 feet.....	.40	1.60	3.00	13.00	
Pecans (from selected Texas nuts), 3 to 4 feet.....	.30	1.10	2.00	8.00	
Pecans (from selected Texas nuts) 2½ to 3 feet.....	.25	.85	1.50	6.00	11.00
Pecans (from selected Texas nuts), 2 to 2½ feet.....	.22	.70	1.20	5.00	9.00
Pecans (from selected Texas nuts), 1 to 2 feet.....	.20	.60	1.00	4.50	8.00
Pecans (from selected Texas nuts), 1 year.....	.14	.30	.40	1.75	3.00
Pecans (from extra select Tex. nuts, 60 to lb.), 2 year	.20	.60	1.00	4.50	8.00
Pecans (from hardy Indian Territory nuts, hardy up to					
Missouri river), 1 year.....	.14	.30	.40	1.75	3.00
Pecans (Indian Territory), 2 years.....	.18	.50	.80	2.75	5.00
Sarvis, Dwarf Juneberry, 2 to 3 feet.....	.18	.50	.80	2.75	5.00
Sarvis, Dwarf Juneberry, 1 to 2 feet.....	.15	.35	.50	2.00	3.50
Persimmon, American, 6 to 8 inch.....	.15	.35	.50	2.00	3.50
Persimmon, Early Golden, top-grafted, 3 to 5 feet.....	.50	2.10			
Pawpaw, 6 inch.....	.15	2.10			
Walnut, Black, 12 to 18 inch.....	.18	.50	.80	2.75	5.00
Walnut, English, 3 to 4 feet.....	.35	1.35	2.50	11.00	20.00
Walnut, English, 2 to 3 feet.....	.30	1.10	2.00	9.00	16.00
Walnut, English, 1 to 2 feet.....	.20	.60	1.00	4.50	8.00

GARDEN ESCULENT ROOTS

	Each	Per 5	Per 10	Per 50	Per 100	Per 1000
Rhubarb, Myatt's Linæus, best, divisions 1 to 3 crowns,	\$.16	\$.40	\$.60	\$2.75	\$5.00	\$45.00
Asparagus, Conover's Colossal, 2 year.....	.10	.15	.15	.40	.60	4.00
Asparagus, Columbian Mammoth, white, 2 year.....	.10	.15	.15	.40	.60	4.00
Sage.....	.15	.35	.50	1.50		
Horseradish, sets.....	.13	.25	.50	1.00		

Jas. B. Wild & Bros.

SARCOXIE, MO.

WERE AWARDED

A GOLD MEDAL

on their exhibit in
group 108 onOrnamental Evergreens
and Shade Treesat the Louisiana
Purchase Exposition
at Saint Louis-
Mo., 1904.We furnish Large
Estates with Or-
namental Trees
and Plants.Extensive Grow-
ers of Fruit and
Ornamental TreesWe had other ex-
hibits near the
Floral Clock be-
sides the Ever-
greens in the Rose
Gardens; also near
the Missouri State
Buildings, etc.

EVERGREENS For the Lawn

NOTE: All Evergreens offered are of our own growing, from seeds and cuttings. Do not compare our rates with "forest pulled seedlings" nor with Northern nursery grown, so-called, but note that those we offer can be had long before you can get them from the North. Aside from this, ours are acclimated to the West and South, which gives them a decided advantage over others for timber plantations, windbreaks and ornamental planting.

ALL HERE LISTED ARE TRANSPLANTED AND ROOT-PRUNED. For seedlings see pages 29 and 30.

Selected specimens are 25 per cent higher; extra selected specimens 50 per cent higher than the list price.

	Each	Per 5	Per 10	Per 50	Per 100
Arbor Vitae, American, 5 feet up.....	\$.45	\$1.85	\$3.50	\$16.00	\$30.00
Arbor Vitae, American, 3 to 4 feet.....	.30	1.10	2.00	7.50	14.00
Arbor Vitae, American, 2 to 3 feet.....	.25	.85	1.50	6.00	11.00
Arbor Vitae, Woodward (Globe), 20 inches and over.....	.35	1.35	2.50	11.00	20.00
Arbor Vitae, Woodward (Globe), 18 inches and over.....	.30	1.10	2.00	8.00	15.00
Arbor Vitae, Woodward (Globe), 12 inches and over.....	.25	.85	1.50	6.00	10.00
Arbor Vitae, Douglas Golden, 3 to 4 feet.....	.45	1.85	3.50	15.00	
Arbor Vitae, Douglas Golden, 2 to 3 feet.....	.40	1.60	3.00	12.50	22.00
Arbor Vitae, Hovey's 3 to 4 feet.....	.45	1.85	3.50	15.00	
Arbor Vitae, Hovey's, 2½ feet and up.....	.35	1.35	2.50	11.00	20.00
Arbor Vitae, Hovey's, 2 to 2½ feet.....	.30	1.10	2.00	8.00	15.00
Arbor Vitae, Hovey's, 18 inches to 2 feet.....	.25	.85	1.50	6.00	10.00
Arbor Vitae, Hovey's, 12 to 18 inches.....	.22	.70	1.20	5.00	8.00
Arbor Vitae, Pyramidal, 3 feet and up.....	.45	1.85	3.50		
Arbor Vitae, Pyramidal, 2 to 2½ feet.....	.40	1.60	3.00	12.50	22.00
Arbor Vitae, Pyramidal, 1½ feet up.....	.35	1.35	2.50	11.00	20.00
Arbor Vitae, Pyramidal, 12 inches up.....	.25	.85	1.50	6.00	
Arbor Vitae, Siberian, 3 feet up.....	.45	1.85	3.50	15.00	
Arbor Vitae, Siberian, 2 feet up.....	.35	1.35	2.50	11.00	20.00
Arbor Vitae, Siberian, 18 to 24 inches.....	.30	1.10	2.00	8.00	
Arbor Vitae, Chinese Gold, Df., 8 in. (Biota aurea nana).....	.30	1.10	2.00		
Arbor Vitae, Chin. Golden (Biota aurea conspicua) 12 in.....	.40	1.60	3.00		
Cedar, Red, 18 inches.....	.30	1.10	2.00	8.00	
Cedar, Red, 1 foot and up.....	.25	.85	1.50	6.00	
Cedar, Red, 2 feet.....	.35	1.35	2.50	11.00	
Cypress, Lawson, 18 inches and up.....	.35	1.35	2.50		
Cypress, Lawson, 2 to 3 feet.....	.45	1.85	3.50		
Cypress, Lawson, 1 foot and up.....	.30	1.10	2.00		
Cypress, Lawson, Blue, 3 feet.....	.55	2.35	4.50	20.00	
Cypress, Lawson, Blue, 2 to 3 feet.....	.45	1.85	3.50	15.00	
Cypress, Lawson, Blue, 1 foot and up.....	.35	1.35	2.50		
Fir, Balsam, 12 inches and over.....	.30	1.10	2.00	8.00	15.00

Read Terms and Conditions of Sale Before Ordering.

EVERGREENS—Continued.

	Each	Per 5	Per 10	Per 50	Per 100
Fir, Balsam, 18 inches and over.....	.35	1.35	2.50	11.00	
Fir, Balsam, 2 feet and over.....	.45	1.85	3.50		
Hemlock Spruce, 4 feet and up.....	.55	2.35	4.50	20.00	
Hemlock Spruce, 3 feet and up.....	.45	1.85	3.50	15.00	
Hemlock, Spruce, 2½ to 3 feet and up.....	.40	1.60	3.00	13.00	
Hemlock, Spruce, 2 to 2½ feet.....	.35	1.35	2.50	11.00	20.00
Hemlock Spruce, 12 to 24 inches.....	.30	1.10	2.00	8.00	15.00
Hemlock, Spruce, 12 to 18 inches.....	.25	.85	1.50	5.50	10.00
Juniper, Prostrata.....	.30	1.10	2.00		
Juniper, Savin, 36 inch spread.....	.40	1.60	3.00	13.00	
Juniper, Savin, 24 inch spread.....	.30	1.10	2.00	8.00	15.00
Juniper, Savin, 18 inch spread.....	.25	.85	1.50	5.50	10.00
Juniper, Savin, 15 inch spread.....	.22	.70	1.20	5.00	8.50
Juniper, Savin, 12 inch spread.....	.20	.60	1.00	4.00	6.50
Juniper, Irish, 3½ to 4 feet in height.....	.50	2.10	4.00	18.00	35.00
Juniper, Irish, 3 to 3½ feet in height.....	.45	1.85	3.50	15.00	27.00
Juniper, Irish, 2½ to 3 feet in height.....	.40	1.60	3.00	13.00	25.00
Juniper, Irish, 2 to 2½ feet in height.....	.35	1.35	2.50	11.00	20.00
Juniper, Irish, 18 to 24 inches in height.....	.30	1.10	2.00	8.00	15.00
Pine, Scotch, 3 feet and up.....	.45	1.85	3.50	15.00	
Pine, Austrian, 2½ feet and up.....	.45	1.85	3.50	15.00	
Pine, Austrian, 18 to 24 inches.....	.30	1.10	2.00	9.00	17.00
Pine, White, 2 to 3 feet.....	.50	2.10	4.00		
Pine, White, 18 to 24 inches.....	.45	1.85	3.50		
Pine, White, 12 to 18 inches.....	.35	1.35	2.50		
Pine, Red, 2 to 3 feet.....	.45	1.85	3.50	15.00	
Retinospora Plumrosa, 8 to 12 inches.....	.30				
Retinospora Plumrosa Aurea, 8 to 12 inches.....	.35	1.35			
Spruce, Colorado Blue, 8 inches and over.....	.60	2.60	5.00		
Spruce, Colorado Blue, 12 inches and over.....	.70	3.10	6.00		
Spruce, Colorado Blue, 3 feet, select in color.....	1.50				
Spruce, Colorado Blue, 4 feet, green type.....	1.30	6.10	12.00		
Spruce, Colorado, 4 feet, select in color.....	2.50	12.10	24.00		
Spruce, Colorado Blue, 5 feet, select in color.....	3.00	14.60	29.00		
Spruce, Norway, 8 inches.....	.20	.60	1.00	4.50	8.00
Spruce, Norway, 12 inches.....	.25	.85	1.50	6.50	12.00
Spruce, Norway, 18 inches.....	.30	1.10	2.00	9.00	17.00

SHRUB EVERGREENS, HOLLY, MAHONIA, ETC.

	Each	Per 5	Per 10	Per 50	Per 100
Box Tree (Buxus Arborescens) 18 inch.....	\$.30	\$1.10	\$2.00	\$8.00	\$15.00
Mahonia Aquifolia, 12 inch.....	.30	1.10	2.00		
Holly, American, 12 inch.....	.30	1.10	2.00	8.00	15.00
Holly, American, 18 inch.....	.35	1.35	2.50		
Holly, American, 2 feet.....	1.00	5.50	9.00		
Pyracantha (Evergreen Thorn), 12 to 18 inches.....	.20	.60	1.00	4.50	8.00
Yucca Fillamentosa (Washington Plume), strong plants.....	.20	.60	1.00	4.50	8.00

CHRISTMAS TREES

And Evergreen Boughs for Festooning—All Nursery Grown.

Prices are for common run. Selected specimens add 25 per cent, to respective rates, and for extra selected specimens add 50 per cent to respective rates named.

	Each	Per 5	Per 10	Per 50	Per 100
Cedar, Red, 8 feet.....	\$.75	\$3.35	\$6.50		
Cedar, Red, 9 feet.....	1.00	4.00	9.00		
Cedar, Red, 10 feet.....	1.25	5.75	11.50		
Cedar, Red, 11 feet.....	1.50				
Cedar, Red, 12 feet.....	1.75	8.35			
Cedar, Red, 13 feet.....	2.00				
Cedar, Red, 14 feet.....	2.50	12.10			
Cedar, Red, 15 feet.....	3.00				
Cedar, Red, 16 feet.....	3.50				
Norway Spruce, 5 feet and over in height.....	.35	1.35	2.50		
Norway Spruce, 6 feet and over in height.....	.40	1.60	3.00		
Norway Spruce, 7 feet and over in height.....	.50	2.10	4.00		
Norway Spruce, 8 feet and over in height.....	.60	2.60	5.00		
Norway Spruce, 9 feet and over in height.....	.80	3.60	7.00		
Norway Spruce, 10 feet and over in height.....	1.00	4.60	9.00		
Norway Spruce, 11 feet and over in height.....	1.50				
Norway Spruce, 12 feet and over in height.....	2.00				

CHRISTMAS TREES—Continued.

	Each	Per 5	Per 10	Per 50	Per 100
Norway Spruce, 13 feet and over in height.....	.250				
Norway Spruce, 14 feet and over in height.....	3.00				
Norway Spruce, 15 feet and over in height.....	3.50				
Norway Spruce, from 16 to 20 ft. in ht., from \$4.00 to 12.00 each					
Evergreen Boughs in assortment from above named species of trees, 12 to 15 inches, \$1.25 per 100 pounds; 1,000 pounds for \$10.00. Norway Spruce, \$1.50 per 100 pounds; 1,000 pounds for \$12.50. Holly Boughs, 12 to 15 inches, \$5.00 per 100 pounds.					
Ivy leaves (1,000 for \$2.50).					

ORNAMENTAL TREES—All Nursery Grown.

NOTE.—Large trees above eight feet will be cut back unless otherwise ordered. Trees here offered have been one or more times transplanted and root pruned. Seedlings for timber planting, etc., and for lining out in nursery rows, see pages 29 and 30.

	Each	Per 5	Per 10	Per 50	Per 100
Ash, Black, 2 to 3 three feet.....	.20	\$.60	\$1.00	\$4.50	
Ash, Blue, 2 to 3 feet.....	.20	.60	1.00	4.50	
Ash, White, 2 to 3 feet.....	.16	.40	.60	2.50	4.50
Ash, White, 3 to 4 feet.....	.18	.50	.80	3.50	6.00
Ash, White, 4 to 5 feet.....	.20	.60	1.00	4.50	8.00
Ash, White, 10 feet.....	.30	1.10	2.00	9.00	
Ash, White, 2½ to 3 inch caliper.....	1.20	5.60	11.00		
Ash, White, 3 inch caliper.....	1.60	7.60	15.00		
Ash, Variegated, elegant, 2 to 3 feet.....	.25	.85	1.50	6.00	
Ash, Variegated, elegant, 4 to 5 feet.....	.35	1.35	2.50	11.00	20.00
Ash, Variegated, elegant, 5 to 6 feet.....	.40	1.60	3.00	13.00	25.00
Ash, Variegated, elegant, 6 to 7 feet.....	.50	2.10	4.00	18.00	35.00
Ash, Yellow, 2 to 3 feet.....	.20	.60	1.00		
Ash, English, in assortment, 6 feet and up.....	.40	1.60	3.00	13.00	
Ash, English, in assortment, 2 to 3 feet.....	.25	.85	1.50	6.00	
Sorts: Imbrica, Puntata, Rufa, Single Leaf, Sharp Leaf, Willow Leaf.					
Ash, Mountain, 3 feet and over in height.....	.30	1.10	2.00		
Ash, Mountain, 4 feet and over in height.....	.35	1.35	2.50		
Ash, Mountain, Oakleaf, 3 feet and over.....	.40	1.60			
Ash, Mountain, Oakleaf, 4 feet and over.....	.50	2.10	4.00		
Beech, American, 5 feet and up.....	.35	1.35	2.50	11.00	
Birch, European White, 2 to 3 feet.....	.16	.40	.60	2.50	4.50
Birch, European White, 3 to 4 feet.....	.18	.50	.80	3.50	6.00
Birch, European White, 4 to 5 feet.....	.25	.85	1.50	6.00	
Birch, European White, 5 to 6 feet.....	.30	1.10	2.00	9.00	
Buckeye, 4 feet.....	.25	.85	1.50		
Buckeye, 5 feet.....	.35	1.35	2.50		
Catalpa Bungeii, top worked, 6 feet and over.....	.40	1.60	3.00		
Catalpa Bungeii, top worked, 7 feet and over.....	.50	2.10	4.00		
Catalpa Bungeii, top worked, 8 feet and over.....	.60	2.60	5.00		
Catalpa Bungeii, top worked, 9 feet and over.....	.70	3.10	6.00		
Catalpa Speciosa, 2 to 3 feet.....	.15	.35	.50	2.00	3.50
Catalpa Speciosa, 3 to 4 feet.....	.16	.40	.60	2.50	4.00
Catalpa Speciosa, 1½ inch caliper.....	.35	1.35	2.50	11.00	20.00
Catalpa Speciosa, 2 inch caliper.....	.40	1.60	3.00	13.00	25.00
Catalpa Speciosa, 2½ inch caliper.....	.45	1.85	3.50	15.00	28.00
Catalpa Speciosa, 3 inch caliper.....	.60	2.60	5.00	22.00	40.00
Elm, Red, or Slippery, 3 feet and over in height.....	.20	.60	1.00		
Elm, Red, or Slippery 4 feet and over in height.....	.25	.85	1.50		
Elm, White, 4 to 5 feet.....	.22	.70	1.20	4.50	8.00
Elm, White, 5 to 6 feet.....	.35	1.35	2.50	11.00	20.00
Elm, White, 1¼ inch caliper.....	.45	1.85	3.50	16.00	30.00
Elm, White, 1½ inch caliper.....	.60	2.60	5.00	22.00	40.00
Elm, White, 2 inch caliper.....	.80	3.60	7.00	32.00	60.00
Elm, White, 2½ inch caliper.....	1.20	5.60	11.00	50.00	90.00
Elm, White, 3 inch caliper.....	1.60	7.60	15.00		
Elm, White, 3½ inch caliper.....	2.10	10.10	20.00		
Elm, White, 4 inch caliper.....	3.00	14.60	29.00		
Hackberry, 9 feet and over in height.....	.40	1.60	3.00		
Hackberry, 12 feet and over in height.....	.50	2.10	4.00		
Hornbeam, 8 feet and over in height.....	.50	2.10	4.00		
Horse Chestnut, 2½ to 3 feet.....	.25	.85	1.50		
Judas Tree (Red Bud), 4 feet and over in height.....	.25	.85	1.50		
Judas Tree, (Red Bud), 8 to 10 feet in height.....	.40	1.60	3.00		

Read Terms and Conditions of Sale Before Ordering.

ORNAMENTAL TREES—Continued.

	Each	Per 5	Per 10	Per 50	Per 100
Kentucky Coffee Tree, 3 to 4 feet.....	.25	.85	1.50	6.00	9.00
Kentucky Coffee Tree, 4 to 5 feet.....	.30	1.10	2.00	9.00	17.00
Kentucky Coffee Tree, 5 to 6 feet.....	.35	1.35	2.50	11.00	20.00
Kentucky Coffee Tree, 6 to 8 feet.....	.40	1.60	3.00	13.00	25.00
Kentucky Coffee Tree, 8 to 10 feet.....	.50	2.10	4.00	18.00	35.00
Kentucky Coffee Tree, 1 1/4 inch caliper.....	.60	2.60	5.00	22.00	
Kentucky Coffee Tree, 1 1/2 inch caliper.....	.70	3.10	6.00	27.00	
Linden, American, 2 feet and over.....	.25	.85	1.50	6.00	9.00
Maple, Norway, 2 inch caliper.....	1.60	7.60	15.00		
Maple, Norway, 2 1/2 inch caliper.....	2.10	10.10	20.00		
Maple, Soft or White, 4 to 5 feet.....	.16	.40	.60	2.50	4.50
Maple, Soft or White, 5 to 6 feet.....	.18	.50	.80	3.50	6.00
Maple, Soft or White, 6 to 8 feet.....	.22	.70	1.20	5.00	8.50
Maple, Soft or White, 8 to 10 feet.....	.25	.85	1.50	6.00	9.00
Maple, Soft or White, 1 1/4 to 1 1/2 inch caliper.....	.30	1.10	2.00	9.00	17.00
Maple, Soft or White, 1 1/2 to 1 3/4 inch caliper.....	.35	1.35	2.50	11.00	20.00
Maple, Soft or White, 1 3/4 to 2 inch caliper.....	.45	1.85	3.50	15.00	25.00
Maple, Soft or White, 2 to 2 1/2 inch caliper.....	.55	2.35	4.50	20.00	35.00
Maple, Soft or White, 2 1/2 to 3 inch caliper.....	.90	4.10	8.00	35.00	65.00
Maple, Soft or White, 3 to 3 1/2 inch caliper.....	1.30	6.10	12.00	55.00	100.00
Maple, Soft or White, 3 1/2 to 4 inch caliper.....	1.60	7.60	15.00		
Maple, Soft or White, 4 to 5 inch caliper.....	2.10	10.10	20.00		
Maple, Sugar (Rock), 3 feet and over in height.....	.20	.60	1.00	4.50	
Maple, Sugar (Rock), 4 feet and over in height.....	.30	1.10	2.00	8.00	15.00
Maple Sugar (Rock), 5 feet and over in height.....	.35	1.35	2.50	11.00	
Maple, Sugar (Rock), 8 to 10 feet.....	.45	1.85	3.50	15.00	25.00
Maple, Sugar (Rock), 1 1/4 to 1 1/2 inch caliper.....	.55	2.35	4.50	20.00	35.00
Maple, Sugar (Rock), 1 1/2 to 1 3/4 inch caliper.....	.70	3.10	6.00	25.00	45.00
Maple, Sugar (Rock), 1 3/4 to 2 inch caliper.....	1.00	4.60	9.00	40.00	70.00
Maple, Sugar (Rock), 2 to 2 1/2 inch caliper.....	1.20	5.60	11.00	45.00	80.00
Maple, Sugar (Rock), 2 1/2 to 3 inch caliper.....	1.60	7.60	15.00		
Maple, Sugar (Rock), 3 to 3 1/2 inch caliper.....	2.10	10.10	20.00		
Maple, Sugar (Rock), 3 1/2 to 4 inch caliper.....	3.00	14.60	29.00		
Maple, Weir's Cut Leaf, 4 to 5 feet.....	.30	1.10	2.00		
Maple, Weir's Cut Leaf, 5 to 6 feet.....	.40	1.60	3.00		
Maple, Weir's Cut Leaf, 6 to 7 feet.....	.50	2.10	4.00		
Oak, Black, 6 feet and over.....	.40	1.60	3.00		
Oak, Burr, 3 1/2 to 4 feet.....	.25	.85	1.50	6.00	
Oak, Burr, 6 feet and over.....	.40	1.60	3.00	13.00	25.00
Oak, Burr, 8 feet and over.....	.55	2.35	4.50	20.00	35.00
Oak, Chinquapin, 5 to 6 feet.....	.35	1.35	2.50	11.00	20.00
Oak, Chinquapin, 6 to 8 feet.....	.45	1.85	3.50	15.00	25.00
Oak, Chinquapin, 8 to 10 feet.....	.55	2.35	4.50	20.00	
Oak, English, 1 1/2 feet.....	.25	.85	1.50		
Oak, White, 4 to 5 feet.....	.30	1.10	2.00	9.00	17.00
Oak, White, 5 to 6 feet.....	.35	1.35	2.50	11.00	20.00
Oak, White, 7 feet.....	.55	2.35	4.50	20.00	
Poplar, Abele (Silver), 5 feet and over.....	.35	1.35	2.50		
Poplar, Abele (Silver), 7 feet.....	.45	1.85	3.50	15.00	
Poplar, Abele (Silver), 8 feet.....	.55	2.35	4.50	20.00	
Poplar, Aspen (Quaking), 5 feet and over.....	.40	1.60	3.00		
Poplar, Balm of Gilead, 2 to 3 feet.....	.25	.85	1.50		
Poplar, Balm of Gilead, 3 to 4 feet.....	.35	1.35	2.50		
Poplar, Carolina, 4 feet and up.....	.20	.60	1.00	4.50	8.00
Poplar, Carolina, 5 to 6 feet.....	.25	.85	1.50	6.00	9.00
Poplar, Carolina, 6 to 7 feet.....	.30	1.10	2.00	9.00	17.00
Poplar, Carolina, 8 feet.....	.35	1.35	2.50	11.00	20.00
Poplar, Carolina, 1 1/4 inch caliper.....	.40	1.60	3.00	13.00	25.00
Poplar, Carolina, 1 1/2 inch caliper.....	.50	2.10	4.00	18.00	32.00
Poplar, Golden Leaf, 2 to 3 feet.....	.25	.85	1.50		
Poplar, Golden Leaf, 3 to 4 feet.....	.35	1.35	2.50		
Poplar, Lombard, 2 to 3 feet.....	.14	.30	.40		
Poplar, Lombard, 3 to 4 feet.....	.16	.40	.60		
Poplar, Lombard, 4 to 5 feet.....	.18	.50	.80		
Poplar, Lombard, 5 to 6 feet.....	.22	.70	1.20		
Poplar, Lombard, 6 feet and over.....	.25	.85	1.50		
Salisburia (Ginko, Maiden Hair) 4 to 5 feet.....	.45	1.85	3.50	15.00	25.00
Salisburia (Ginko, Maiden Hair), 5 to 6 feet.....	.50	2.10	4.00	18.00	32.00
Salisburia (Ginko, Maiden Hair), 6 to 7 feet.....	.60	2.60	5.00	22.00	40.00
Salisburia, (Ginko, Maiden Hair), 7 to 8 feet.....	.70	3.10	6.00	27.00	50.00
Salisburia, (Ginko, Maiden Hair), 8 to 9 feet.....	1.00	4.60	9.00	40.00	
Salisburia, (Ginko, Maiden Hair), 10 to 12 feet.....	1.30	6.10	12.00	55.00	
Sassafras (Laurus), 7 feet and over.....	.40	1.60	3.00		

Read Terms and Conditions of Sale Before Ordering.

ORNAMENTAL TREES—Continued.

	Each	Per 5	Per 10	Per 50	Per 100
Sapindus Marginatus, 2 to 3 feet.....	.50	2.10	4.00		
Sapindus Marginatus, 3 to 4 feet.....	.70	3.10	6.00		
Sycamore, American, 2 to 3 feet.....	.18	.50	.80	3.50	6.00
Sycamore, American, 3 to 4 feet.....	.20	.60	1.00	4.50	8.00
Sycamore, American, 4 to 5 feet.....	.25	.85	1.50	6.00	
Sycamore, American, 5 to 6 feet.....	.35	1.35	2.50		
Sycamore, American, 6 to 7 feet.....	.40	1.60	3.00		
Sycamore, American, 7 to 8 feet.....	.50	2.10	4.00	18.00	
Sycamore, American, 8 feet.....	.60	2.60	5.00		
Tree Foil, or Water Ash, 4 feet and over.....	.25	.85	1.50		
Tulip Tree, (Liriodendron), 2 to 3 feet.....	.20	.60	1.00	4.50	8.00
Tulip Tree (Liriodendron), 3 to 4 feet.....	.25	.85	1.50	6.00	
Tulip Tree (Liriodendron), 4 to 6 feet.....	.35	1.35	2.50	11.00	
Tulip Tree, 1½ to 1¾ inch caliper.....	.60	2.60	5.00	20.00	35.00
Tulip Tree, 1¾ to 2 inches caliper.....	.80	3.00	7.00	30.00	55.00
Tulip Tree, 2 to 2½ inches caliper.....	1.00	4.60	9.00	40.00	70.00
Tulip Tree, 2½ to 3 inches caliper.....	1.30	6.10	12.00	55.00	100.00
Tulip Tree, 3 to 4 inch caliper.....	1.60	7.60	15.00		
Willow Golden, 3 to 4 feet.....	.25	.85	1.50		
Willow, Golden, 4 to 5 feet.....	.40	1.10	2.00		
Willow, Laurel Leaf, 1 foot and over.....	.25	.85	1.50		
Willow, Osler or Basket, 2 feet and over 1 year.....	.20	.60	1.00	4.50	8.00

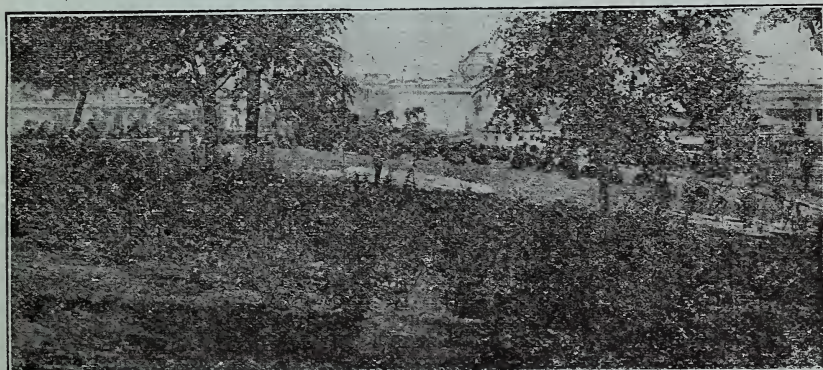
WEEPING TREES.



	Each	Per 5	Per 10
Mulberry, Teas' Grafted 3 feet and over.....	\$.50	\$2.10	\$ 4.00
Mulberry, Teas' Grafted, 3½ feet and over.....	.55	2.35	4.50
Mulberry, Teas' Grafted, 4 feet and over.....	.60	2.60	5.00
Mulberry, Teas' Grafted, 4½ feet and over.....	.65	2.30	5.50
Mulberry, Teas' Grafted, 5 feet and over.....	.75	3.30	6.50
Mulberry, Teas' Grafted, 5½ feet and over.....	.90	4.10	8.00
Mulberry, Teas' Grafted, 6 feet and over.....	1.10	5.10	10.00
Mulberry, Teas' Grafted, 7 feet and over.....	1.35	6.35	12.50
Weeping Elm, Camperdown, 4 feet.....	.45	1.85	3.50
Weeping Elm, Camperdown, 5 feet.....	.60	2.60	5.00
Weeping Elm, Camperdown, 6 feet.....	.90	4.10	8.00
Weeping Elm, Camperdown, 7 feet.....	1.00		



	Each	Per 5	Per 10
Weeping Willow, Babylonian, 3 feet, Golden.....	.25	.85	1.50
Weeping Willow, Babylonian, 4 feet, Golden.....	.30	1.10	2.00
Weeping Willow, Babylonian, 5 feet and up, Golden.....	.40	1.60	3.00
Weeping Willow, Babylonian, 4 feet.....	.30	1.10	2.00
Weeping Willow, Babylonian, 5 feet.....	.40	1.60	3.00
Weeping Willow, Wisconsin, 4 feet and up.....	.30	1.10	2.00
Weeping Willow, Wisconsin, 5 feet and up.....	.35	1.35	2.50



Our Exhibit of Shrubs at the World's Fair, St. Louis, Mo., 1904.

Read Terms and Conditions of Sale Before Ordering.

100,000 Ornamental Flowering Shrubs.

	Each	Per 5	Per 10	Per 50	Per 100
Acacia Rose or Moss, Locust, 2 feet and over.....	\$.18	\$.50	\$.80	\$ 3.50	\$ 6.00
Almond, Dwarf, Double Flowering, 1 foot.....	.20	.60	1.00		
Althea, Variegated Leaf, 1 foot and over.....	.20	.60	1.00		
Althea, Variegated Leaf, 2 feet and over.....	.30	1.10	2.00		
Althea, in sorts named below, 1 foot and over.....	.15	.35	.50	2.25	4.00
Althea, in sorts named below, 2 feet and over.....	.18	.50	.80	3.50	6.00
Althea, in sorts named below, 3 feet and over.....	.20	.60	1.00	4.50	8.00
Althea, in sorts named below, 4 feet and over.....	.22	.70	1.20	5.50	10.00
Sorts Althea: Banner, Light Rose, Double White, Atrorubans or Red, Totus Albus (white), Double Blue.					
Berberry, Purple Leaf, 1 foot.....	.15	.35	.50	2.25	
Berberry, Thunbergii, 18 to 24 inches.....	.20	.60	1.00		
Berberry, Thunbergii, 2 feet up.....	.25	.85	1.50		
Calycanthus (Sweet scented Shrub) 2 feet.....	.18	.50	.80	3.50	6.00
Calycanthus, (Sweet scented Shrub), 3 feet.....	.20	.60	1.00	4.50	
Calycarpa Purpurea, 3 feet and over in height.....	.25	.85	1.50		
Deutzia, sorts noted below, 2 feet and over in height.....	.15	.35	.50	2.50	4.00
Deutzia, sorts noted below, 3 feet.....	.16	.40	.60	2.75	5.00
Sorts Deutzia: Crenata, Double White, and Pink, Pride of Rochester.					
Elder, Cut Leaf.....	.30	1.10	2.00		
Euonymus (Strawberry Tree), 3 feet and over.....	.20	.60	1.00		
Euonymus (Strawberry Tree), 4 feet and over.....	.25	.85	1.50		
Exochordia Grandiflora, 1 foot and over.....	.20	.60	1.00	4.50	8.00
Exochordia Grandiflora, 2 feet and over.....	.22	.70	1.20	5.50	10.00
Exochordia Grandiflora, 3 feet and over.....	.25	.85	1.50	6.50	12.00
Flowering Currant, 2 feet in height.....	.20	.60	1.00	4.50	8.00
Fringe White Chionanthus, 2 feet in height.....	.30	1.10	2.00		
Fringe Purple (Smoke Tree), 2 feet.....	.25	.85	1.50		
Globe Flower, Japan, 2 feet in height.....	.20	.60	1.00		
Golden Bell Fortuni, 2 feet in height.....	.20	.60	1.00	4.50	8.00
Golden Bell Fortuni, 3 feet in height.....	.22	.70	1.20	5.50	10.00
Golden Bell Forsythia Suspensa, 2 feet in height.....	.20	.60	1.00	4.50	8.00
Golden Bell Forsythia Suspensa, 3 feet in height.....	.22	.70	1.20	5.50	10.00
Golden Bell Forsythia Viridissima (Green), 2 feet over.....	.20	.60	1.00	4.50	8.00
Halesia (Silver Bell), 2 feet in height.....	.25	.85	1.50	6.00	
High Bush Cranberry, Viburnum Opulis Oxycoccos, 1 1/2 ft.....	.22	.70	1.20	5.00	
High Bush Cranberry, 2 feet.....	.25	.85	1.50	6.50	
Honeysuckle, Bush, 1 foot in height.....	.20	.60	1.00		
Hydrangea Grandiflora, 1 foot in height.....	.22	.70	1.20	5.00	10.00
Hydrangea Grandiflora, 2 feet in height.....	.25	.85	1.50	6.50	12.00
Hydrangea Grandiflora, 3 feet.....	.35	1.35	2.50	11.00	20.00
Hypericum Kalmianum.....	.25	.85	1.50		
Jasmine, White.....	.25				
Jasmine, Yellow.....	.25				
Kolreuteria, China Bladder Nut, 5 feet.....	.25	.85	1.50		
Lilac, Purple, Double, 2 feet and over.....	.25	.85	1.50	6.50	
Lilac, Purple, Double, 3 feet and over.....	.35	1.35	2.50	11.00	20.00
Lilac, Purple, 2 feet and over.....	.20	.60	1.00	4.50	
Lilac, Purple, 3 feet and over.....	.22	.70	1.20	5.00	10.00
Lilac, Persian, 2 feet and over.....	.20	.60	1.00	4.50	
Lilac, Persian, 3 feet.....	.25	.85	1.50	6.50	
Lilac, White, 1 foot and over.....	.30	1.10	2.00		
Philadelphus, Mock Orange, 2 feet and over.....	.20	.60	1.00	4.50	8.00
Philadelphus, Mock Orange, 3 feet and over.....	.22	.70	1.20	5.50	10.00
Philadelphus Dianthinorus flore pleno, 2 feet.....	.25	.85	1.50		
Philadelphus Grandiflorus, 2 feet and over.....	.20	.60	1.00	4.50	8.00
Philadelphus Graniflorus, 3 feet and over.....	.25	.85	1.50	6.50	
Privet, California, 1 foot and over.....	.15	.35	.50	2.00	3.50
Privet, California, 2 feet and over.....	.18	.50	.80	3.50	6.00
Prunus Passardi (Purple Leaf Plum), 4 feet.....	.30	1.10	2.00		
Prunus Triloba, Double Flowering, 2 years.....	.25	.85	1.50		
Pyrus Japonica, Scarlet (Japan Quince) 1 foot and over.....	.16	.40	.60	2.50	4.00
Pyrus Japonica, Scarlet, 2 feet and over.....	.17	.45	.70	3.00	5.50
Pyrus Japonica, Scarlet, 3 feet and over.....	.18	.50	.80	3.50	6.00
Pyrus Japonica, White, 2 feet and over.....	.22	.70	1.20	5.50	
Pyrus Japonica, White, 3 feet and over.....	.25	.85	1.50	6.50	
Snowball, 1 foot and over.....	.16	.40	.60	2.50	4.00
Snowball, 2 feet and over.....	.18	.50	.80	3.50	6.00
Snowball, 3 feet and over.....	.20	.60	1.00	4.50	8.00

ORNAMENTAL AND FLOWERING SHRUBS—Continued.

	Each	Per 5	Per 10	Per 50	Per 100
Snowball, 4 feet and over.....	.25	.85	1.50	6.50	
Snowball, Japan, 2 feet.....	.25	.85	1.50	6.50	
Snowberry, Red Fruited (Coral Berry), 1 foot.....	.15	.35	.50	1.75	3.00
Snowberry, Red Fruited (Coral Berry), 2 feet.....	.16	.40	.60	2.50	4.00
Snowberry, White, 1 foot.....	.20	.60	1.00		
Spirea Anthony Waterer, 1 foot.....	.25	.85	1.50		
Spirea, 1 foot and over.....	.15	.35	.50	2.00	3.50
Spirea, 2 feet and over.....	.17	.45	.70	3.00	5.00
Spirea, 3 feet and over.....	.18	.50	.80	3.50	6.00
Sorts Spirea: Reeves, Fontenaysi Alba, Prunifolia, Billardi, Thunbergii, Aurea (Gold. Leaf), Van Houttei					
Styrax Japonica, 2 feet.....	.25	.85	1.50		
Sumac, Stag Horn, 3 feet and over.....	.20	.60	1.00		
Sumac, Stag Horn, 5 feet and over.....	.30	1.10	2.00		
Weigelia, Variegated Foliage, 2 feet.....	.25	.85	1.50		
Weigelia, in sorts, 1 foot.....	.18	.50	.80	3.50	6.00
Weigelia, in sorts, 2 feet.....	.20	.60	1.00	4.50	8.00
Weigelia, in sorts, 3 feet.....	.25	.85	1.50	6.50	12.00
Sorts Weigelia: Rosea, Hendersoni, Desboisii, Amabilis.					

ROSES.

NOTE.—The Roses we here offer are grown in open ground, and must not be confounded with pot plants. All offered are strong plants, suitable for general planting, also for conservatories, cemeteries, etc. Size of plants according to class will average from 10 to 20 inches in height. Climbing Roses will be cut back to about 15 inches cane.

	Each	Per 5	Per 10	Per 50	Per 100
June Roses, Harrison Yellow.....	\$.22	\$.70	\$1.20		
Japan Rose, Rugosa Rubra, 2 feet.....	.18	.50	.80	3.50	6.00
Japan Rose, Rugosa Rubra, 1 foot.....	.16	.40	.60	2.50	4.00
Japan Rose, Rugosa, White.....	.25	.85			
Briar, Sweet, good plants, 2 years.....	.20	.60	1.00		
Climbing Rose, Prairie Queen, rosy red.....	.18	.50	.80		
Climbing Rose, Baltimore Bell, bluish changing to white	.20	.60	1.00	4.50	
Climbing Rose, Seven Sisters, bluish changing to white	.20	.60	1.00	4.50	
Rambler, Crimson.....	.20	.60	1.00	4.50	8.00
Rambler, Pink.....	.25	.85	1.50		
Rambler, White.....	.25	.85	1.50		
Rambler, Yellow.....	.25	.85	1.50		
Rambler, Dorothy Perkins, shell pink.....	.30	1.10	2.00		
Rambler, Psyche, White with Pink.....	.30	1.10	2.00		
Trailing Rose, Wichuriana, single white.....	.18	.50	.80	3.50	6.00
*Caroline Marniesse, a grand cemetery rose.....	.25	.85	1.50	6.00	9.00
American Beauty (Hybrid) deep rose.....	.50	2.10	4.00		

*Above is a hardy rose always in bloom. As a bedding rose it has no superior. It is literally a continuous bloomer, being constantly covered with flowers the entire summer. The blossoms are of medium size, full and double, and borne in very pretty clusters. Color pure white, slightly tinged with pink, with delightful tea fragrance. The bush is low growing, and especially adapted for a border or cemetery planting. It is entirely hardy, having withstood unprotected a temperature of 18 degrees below zero without the least injury.

Antoine Rivoire (Hybrid Tea), rosy flesh.....	.30	1.10			
Caroline Goodrich (Climbing Gen. Jacq.).....	.30	1.10	2.00		
Gruss An Tiplitz (Hybrid Tea), bright scarlet.....	.30	1.10	2.00		
Helen Gould (Balduin), (H. T.), rosy crimson.....	.30	1.10	2.00		
Margaret Dickson (Hybrid), white, flesh center.....	.30	1.10	2.00		
Mrs. Robt. Peary (Climbing Kaiserin), (T.), pure white	.30	1.10	2.00		
Snowflake (Marie Lambert), (Tea), white.....	.30	1.10	2.00		
Soleil d'Or (H. P.), yellow.....	.50	2.10			
Jersey Beauty, yellow.....	.30	1.10	2.00		
Moss Roses, in sorts noted below.....	.22	.70	1.20	5.50	
Hybrid Wichuriana, in sorts noted below.....	.30	1.10	2.00		
Hybrid Perpetual Roses, in sorts noted below.....	.22	.70	1.20	5.50	10.00
Monthly Roses, in sorts noted below.....	.22	.70	1.20	5.50	10.00

Sorts Hybrid Perpetual: Coquette des Alps, white; General Jacqueminot, brilliant crimson; Glorie Lyonnaise, salmon yellow; La France, silver rose; Mme. Masson, bright rose; Paul Neyron, deep rose; Prince Camille de Rohan, crimson; Ulrich Brunner, rich crimson; Vick's Caprice, striped.

Sorts Monthly Roses: Bridesmaid, pink; Carmine Pillar; Clothilde Soupert, pink center, shading to white; Duchess de Brabant, soft light rose; Etoile de Lyon, yellow; Francisca

Kruger, chamois color; Hermosa, soft, deep pink; Kaiserin Augusta Victoria, pure white; Mad. de Vatro, rich red, changing to silvery peach; Marie Guillot, pure white; Perle des Jardens, canary or golden yellow; Priscilla; Queen's Scarlet, fiery scarlet; Yellow Souperet or Moselia, chrome yellow, shading to white.

Sorts Hybrid Wichoriana or Trailing Roses: Favorite, double, pink; Pink Roamer, single, red, white center; Triumph, double, pure white.

Sorts Moss Roses: Blanch Robert, white; Glory of Mosses, pale rose; Luxembourg, crimson; Henri Martin, red; Salet, light rose.

VINES AND CREEPERS.

	Each	Per 5	Per 10	Per 50	Per 100
Ampelopsis Englemanii; clinging form; scarce.....	\$.20	\$.60	\$1.00	\$4.50	
Ampelopsis Vietchii (Japan Ivy), miniature foliage.....	.20	.60	1.00	4.50	
Ampelopsis Virginia Creeper, or American Ivy.....	.18	.50	.80	3.50	
Aristolochia Tomentosa (Slender Pipe Vine).....	.25				
Bignonia Capreolate (Cross Vine), evergreen.....	.30	1.10	2.00		
Bignonia (Tecoma radicans), Trumpet Creeper.....	.22	.70	1.20		
Clematis, 2 years; Jackmanii, purple, and Henryii, white	.45	1.85	3.50		
Climbing Bittersweet (Celastrus Scandens).....	.25				
Kuononymous, clinging, variegated foliage, everg'n climber	.30	1.10	2.00		
Honeysuckle, Golden Netted.....	.22	.70	1.20	5.50	
Honeysuckle Halleana (Hall's Japan), almost evergreen	.17	.45	.70	3.00	5.00
Honeysuckle, Monthly Fragrant, red and yellow.....	.20	.60	1.00	4.50	
Honeysuckle, Scarlet Trumpet.....	.17	.45	.70	3.00	
Honeysuckle, Yellow Trumpet.....	.20	.60	1.00	4.50	
Ivy, English, evergreen, clings freely to brick or stone....	.18	.50	.80		
Myrtle (Vince Minor) evergreen, blue flowers.....	.18	.50	.80	3.50	
Moon Seed.....	.25	.85	1.50		
Periploca, Virginia Silk Vine.....	.18	.50	.80	3.50	
Wisteria, Purple, 2 year.....	.20	.60	1.00		
Wisteria, White, 2 year.....	.20	.60	1.00		

Hardy Herbaceous and Perennial Plants.

	Each	Per 5	Per 10	Per 50	Per 100
Aquilegia (Columbine), mixed colors.....	\$.16	\$.40	\$.60	\$2.50	\$4.00
Bleeding Heart (Dicentra Spectabilis).....	.20	.60	1.00	4.50	8.00
Cannas (tender), assorted, 3 varieties.....	.15	.35	.50	2.00	8.50
Catchfly (Fire Pink).....	.15	.35	.50	2.00	3.50
Hibiscus Crimson Eye.....	.16	.40	.60	2.50	
Iris, Purple.....	.20	.60	1.00		
Iris, Yellow.....	.22	.70	1.20		
Lilium Candidum (White Garden Lily).....	.20	.60	1.00	4.50	8.00
Lily, Blackberry (Pardensis Chinensis).....	.14	.30	.40	1.75	3.00
Lily, Day, single orange (Hemerocallis).....	.15	.35	.50	2.00	3.50
Lily, Day, double, orange (Hemerocallis).....	.15	.35	.50	2.00	3.50
Lily, Lemon (Flava).....	.16	.40	.60		
Lily, Tiger (Lilium Tigrinum), single.....	.15	.35	.50	2.00	3.50
Lily, Tiger (Lilium Tigrinum), double.....	.15	.35	.50	2.00	3.50
Lily of the Valley, pips.....	.15	.35	.50	2.00	3.50
Narcissus Poeticus.....	.12 1/2	.22 1/2	.25	1.00	1.75
Pea Vine, hardy, red.....	.20	.60	1.00		
Rudbeckia, Golden Glow.....	.14	.30	.40	1.75	2.50
Spiraea, Goat's Beard.....	.30	1.10	2.00		
Star of Bethlehem.....	.12 1/2	.22 1/2	.25	1.00	1.75

Hardy and Ornamental Grasses.

	Each	Per 5	Per 10	Per 50	Per 100
Eulalia Japonica (Zebra Striped Grass).....	\$.17	\$.45	\$.70	\$3.00	\$5.00
Eulalia Variegated, creamy stripes running through center of leaf.....	.17	.45	.70	3.00	5.00
Erianthus Ravennae, resembling Pampas.....	.20	.60	1.00	4.50	8.00
Ribbon Grass.....	.15	.35	.50	2.00	

WATER LILIES.

	Each	Per 5	Per 10	Per 50	Per 100
Nelumbium Luteum (Am. Lotus, Water Chinquapin) yel. \$.50	\$2.10	\$4.00		
Nelumbium Roseum, rosy pink.....	.70	3.10	6.00		
Nymphae Gladstoniana, fine, immense, white.....	.40	1.60	3.00		

Read Terms and Conditions of Sale Before Ordering.



WATER LILIES—Continued.

	Each	Per 5	Per 10	Per 50	Per 100
Nymphae Odorata, the fragrant white.....	.35	1.35	2.50	10.00	18.00
Nymphae Odorata Minor, miniature.....	.22	.60	1.20		
Nymphae Odo. Rosea (Cape Cod Water Lily), rose pink	.50	2.10	4.00		
Nymphae Odorata Sulphurea, yellow.....	.50	2.10	4.00		
Nymphae Odorata Sulphurea Grandiflora75	3.35	6.50		
Nymphae Robinsoni, yellow, overlaid with purplish red	.75	3.35	6.50		
Nymphae Tuberosa Richardsoni, immense double peony- like white flowers50	2.10	4.00		
Nymphae Tuberosa Rubra	2.50				
Nymphae Lilacea Leyderkia	2.50				

HERBACEOUS PEONIES—(P. Chinensis)

Old, established favorites, long neglected, but now growing in popularity, having been greatly improved in form and color; will no doubt become the rage among flowers. Suitable for nearly all positions—in the garden, along walks, borders, terraces, drives or wild garden. The flowers are large, massive, perfect in outline, and most beautiful. Useful in decorating, and possessing the symmetry and fragrance of the rose. Valuable as cut flowers, shipping admirably. Other effective bulbs planted among them are Dahlias, Gladiolus, Tritoma, Tuberoses.

	Each	Per 5	Per 10	Per 50	Per 100
Andre Lauries, deep bright red, late bloomer. This, Rosea and Lord Byron are practically identical.....	\$.18	\$.50	\$.80	\$ 3.50	
Bride (Terry), flesh, inside light straw, nearly white....	.40	1.60	3.00	13.00	25.00
Chrysanthemiflora, light pink center, yellow stamens....	.30	1.10	2.00		
Delachii, bright crimson, full double, yellow stamens....	.30	1.10	2.00	8.00	15.00
Doyenne d'Engheim, dark pink.....	.22	.70	1.20	5.50	
Excelsior, dark crimson, full double, fine, early.....	.35	1.35	2.50	11.00	
Festiva Maxima, strong grower, large paper white flower, with purplish crimson blotches on outer cen- tral petals, blooms early, finest white75	3.35	6.50	30.00	
Floral Treasure, very double, shapely bloom, very fragrant, blooms long, fine clear bright pink.....	.60	2.60	5.00		

Read Terms and Conditions of Sale Before Ordering.



HERBACEOUS PEONIES, (*P. Chinensis*) Continued

	Each	Per 5	Per 10	Per 50	Per 100
Gardensis, similar to Humeii, but better every way.....	.30	1.10	2.00	8.00	15.00
Golden Harvest, nearest approach to yellow, producing large tri-colored blooms, fragrant and showy.....	.40	1.60	3.00		
Grandiflora Rubra, blood red, fine form, late.....	.30	1.10	2.00		
Humeii, large flower, strong grower, full double, dark rose color, late, cinnamon fragrance.....	.25	.85	1.50	6.50	12.00
Jenny Lind, clear rose pink, fine form bloom, fragrant	.35	1.35	2.50		
La Tulipe, or Multicolor (Calot), flesh pink, outer petals striped whole flower shading to white, strong erect habit, fragrant75	3.35	6.50		
Lee's Grandiflora Rubra, first prize for best 100 blooms at Chicago Show, 1905	1.60	7.60	15.00		
L'Esperance, fine, rose colored, early, free fragrant.....	.35	1.35	2.50	11.00	
Lord Byron, similar to Rosea18	.50	.80	3.50	6.50
Paganini (Holland lists)22	.70	1.20	5.50	10.00
Pottsil, dark crimson, yellow stamens through flower, blooms early30	1.10	2.00	8.00	
Queen Emma, large, bright pink, strong grower, stiff stems35	1.35	2.50	11.00	
Queen Victoria, see Whitleyii.					
Reevesii, purplish rose, center rose, flesh and white.....	.25	.85	1.50	6.50	12.00
Rosea, deep bright red, fragrant, very late bloomer.....	.20	.60	1.00	4.50	8.00
Rosea Superba, brilliant deep pink, fine form, mid-season	.35	1.35	2.50	11.00	20.00
Rubra Violacea, dark rose, center salmon scarlet.....	.22	.70	1.20	5.50	10.00
Thomas Meehan (Terry), dark crimson, full double, fine, early30	1.10	2.00	8.00	
Wacht Am Rhine, dark crimson, full, free bloomer, fine early35	1.35	2.50	11.00	20.00
Unique, similar to Chrysanthemiflora30	1.10	2.00		
Whitleyii (A. B. R. 1799-1812, and R. B. London 1815-1847), large, creamy white, full compact bloom, broad guard petals, opens flesh white, and is one of the best shippers, for placing in cold storage. Queen Victoria, a later appellation (Eng. Hort. 1830), often catalogued as synonymous, is different, as shown by the varieties obtained from various European (Holland) firms85	1.35	2.50	11.00	20.00

HERBACEOUS PEONIES—Hardy—(Continued.)

	Each	Per 5	Per 10	Per 50	Per 100
Officialis Alba Mutabilis, also called White Japan Peony, well formed bloom, light pink, finishing ivory white35	1.35	2.50	11.00	
Officialis Rosea, large, well formed, deep purplish rose..	.30	1.10	2.00	8.00	15.00
Officialis Rubra, the old fashioned deep crimson peony ("Piney"), early, blooms just before the snowballs25	.85	1.50	6.50	12.00
Tenuifolia flora plena, double, dark purplish red, earliest of any to bloom, fennel-shaped leaves, scarce.....	.35	1.35	2.50	11.00	20.00
Mixed, from named varieties, but labels lost.....	.18	.50	.80	3.50	6.00

Tender Bulbs and Roots for Spring Planting.

DAHLIA.

The Dahlia has always been a favorite for autumn flowering. The flowers are so symmetrical and perfect, and the range of colors so large and varied that they will always be popular where display is wanted. The roots are tender and easily injured by frost. They should be set out three feet apart, after all danger of frost is over, and during winter placed in a cool cellar and not allowed to freeze. The plants should be pinched back at first to avoid tying to stakes. Our collection of named Dahlias is of the best, comprising all the leading colors.

Large Flowering Decorative and Show Dahlias.

	Each	Per 5	Per 10	Per 50	Per 100
Admiral Dewey, brilliant imperial purple, fine form.....	\$.18	\$.50	\$.80	\$3.50	\$6.00
Black Dahlia, black maroon18	.50	.80	3.50	6.00
Clifford W. Bruton, pure yellow.....	.18	.50	.80	3.50	6.00
Iridescent, orange red, margined violet and blue.....	.18	.50	.80	3.50	6.00
John Walker, best pure white20	.60	1.00		
King Cactus, deep magenta, overlaid rosy crimson.....	.20	.60	1.00	4.50	
Nymphæe (Wat. Lily Dah.), shrimp pink, shading darker	.20	.60	1.00	4.50	8.00
Strahlen Krohne (Cactus), cardinal red, twisted petals	.22	.70	1.20		
Wm. Agnew, intense dazzling red.....	.20	.60	1.00	4.50	8.00

QUILLED DAHLIAS.

	Each	Per 5	Per 10	Per 50	Per 100
A. D. Livoni, clear pink, very free bloomer.....	\$.20	\$.60	\$1.00	\$4.50	\$8.00
Arabella, pale primrose, shaded old rose, early.....	.20	.60	1.00	4.50	
Grand Duke Alexis, massive, ivory, tinged lavender.....	.20	.60	1.00	4.50	
Queen Victoria, handsome, deep yellow, profuse bloomer	.20	.60	1.00	4.50	8.00
Mixed Dahlias, from named varieties but labels lost.....	.18	.50	.80	3.00	5.00

GLADIOLUS.

No flower has gained more rapidly in public favor, for in addition to the intrinsic merit of the flower it is easy of cultivation and blooms freely. The culture is very simple. They thrive in almost any good soil. Plant the roots six to nine inches apart, the large ones four inches and the small ones three inches deep. Make several plantings of the smallest roots first as soon as the ground is sufficiently dry and warm. Then continue to plant at intervals of two weeks during the spring and early summer. In this way a succession of bloom may be had from mid-summer until frost. In autumn, before freezing, they should be dug and dried, separate the new bulbs from the old, the earth and old roots removed, and then stored in a cool, dry place, secure from frost until spring. For bouquets the flowers are admirable. As soon as the two lower flowers open the spike may be cut and placed in water, and it will last for weeks, all the other flowers opening as well as if growing in the garden.

MIXED GLADIOLI, From Cowers World Fair Straid.

These mixtures must not be confounded with the common mixed sorts.

	Each	Per 5	Per 10	Per 50	Per 100
Choice Mixed, all colors, including striped and blotched kinds, first size	\$.15	\$.35	\$.50	\$1.75	\$3.50
Choice Mixed, all colors, second size.....	.13½	.27½	.35	1.50	2.50

TUBEROSE.

The flowers of this popular plant are waxy white, double, and so fragrant that they perfume the whole atmosphere for some distance around. They are useful in button-hole bouquets, in large bouquets or as single specimens. Each bulb flowers but once, but the smaller bulbs can be set out for future flowering.

Tuberose	\$.14	\$.30	\$.40	\$1.75	\$3.00
----------------	-------	-------	-------	--------	--------

Read Terms and Conditions of Sale Before Ordering.

APPLE ROOT GRAFTS

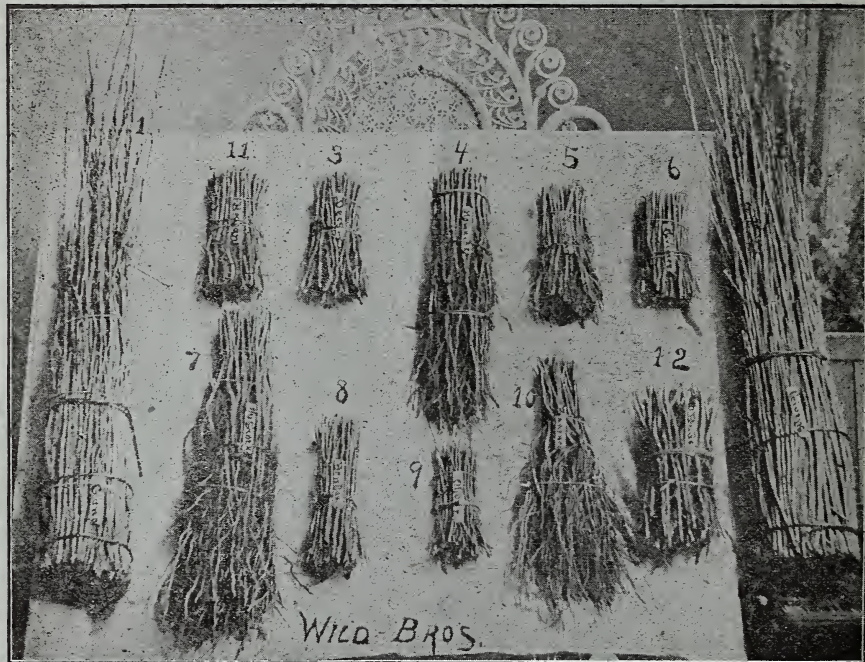
ROOT Grafts are Cions and Roots grafted and tied or bound together and are thus ready for planting in permanent nursery rows.

Orders for Root Grafts given without special agreed specifications will be put up in same manner as those we put up for our own planting. Length of graft 6 to 7 inches, which includes Root and Cions. Not less than 100 of a variety will be put up in the general assortment of varieties. Smaller or broken lots, as to varieties, or of new and scarcer kinds, will be priced as list will allow.

GRAFTS WEIGH from 15 to 40 pounds per 1,000 packed. All orders put up at our risk of damage in storage up to March 1st, after that date same will be at purchaser's risk.

Orders must be accompanied with one-fourth amount in order to secure same.

We make any style of grafts wanted, with any length of scion or root wanted.



PRICES OF VARIOUS STYLES APPLE ROOT GRAFTS OFFERED.

SPECIAL PRICES will be given when in want of large quantities; give list with number wanted in each sort, and the style.

Style 3.—Graft worked on No. 1 3-16 up caliper stock, using first and second cut of a seedling, with from 4 to 5 inches to a cut, and about 5-inch cion. Such grafts are termed by many nurserymen as WHOLE-ROOT GRAFTS. Price of 100 of a sort, 50 cents; if worked on No. 2 stock, 40 cents per 100.

Style 4.—Graft worked on what is termed WHOLE STOCK, using No. 1 3-16 up caliper seedling and about 5-inch cion. Price of 100 grafts of a sort, 80 cents; if worked on No. 2 stock, 70 cents per 100.

Style 5.—Graft worked on No. 1 3-16 up caliper stock, using first 5 inches of a seedling and 5-inch cion. This style of graft is termed COLLAR OR CROWN GRAFT. Price per 100 grafts of a sort, 60 cents; if worked on No. 2 stock, 45 cents per 100.

Style 6. Grafts worked on No. 1 3-16 up caliper stock, using all of such seedlings, usually making about three cuts of 3 inches each, and with about 5-inch cion. Such grafts are termed PIECE-ROOT GRAFTS. Price per 100 of a sort, 40 cents; if worked on No. 2 stock, 30 cents per 100.

Style 8.—Graft worked on No. 1 3-16 caliper stock, using about 2 inches of seedling, (using up the entire stock), and about 8-inch cion. This graft we recommend as a most

Read Terms and Conditions of Sale Before Ordering.

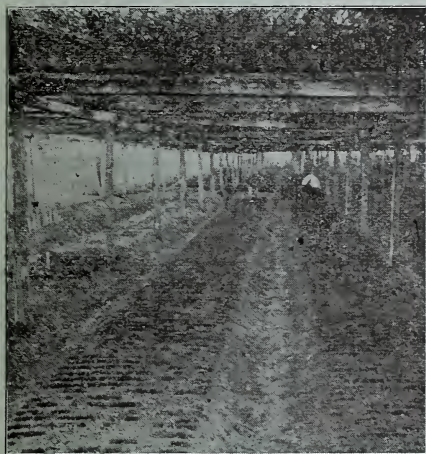
suitable one to grow the tree mainly upon its own roots, and the least subject to suckers sprouting up from the seedling. Price per 100 grafts of a sort, 45 cents; if worked on No. 2 stocks, 35 cents per 100.

Style 11.—Graft worked on No. 1 3-16 up caliper stock, using only second cut, and same to be about 5 inches, with 5-inch cion. Such grafts are termed **SECOND-CUT GRAFTS**, and are, in our estimation, the best grafts that can be secured from a seedling stock. Price per 100 grafts of a sort, 75 cents; if worked on No. 2 stocks, 60 cents per 100.

Fig 1 in above cut represents a bunch of cions.

Figure 7 in above cut represents a bunch of No. 1 Apple Seedlings.

Figure 10 in above cut represents a bunch of No. 2 Apple Seedlings, branched roots. Apple Seedlings priced on application.



YOUNG STOCK FOR LINING OUT IN NUR- SERY ROWS AND FOREST TREE PLANTING

Half Tone Photo Showing Section Propagation Sheds—Covering about Two Acres, under which the many Seeds are Germinated and likewise Cuttings are Rooted.

YOUNG STOCK FOR LINING OUT IN NURSERY ROWS

SHRUBS.

	Per 10	Per 50	Per 100	Per 500	Per 1000
Paw Paw 1 year	\$.50	\$1.50	\$2.75		
Berberry Thunbergia, 12 to 18 inches.....	.50	1.50	2.75		
Deutzia Gracilis (Florist Flower), 6 to 8 inches.....	.60	2.00	3.50		
Deutzia, assorted in 4 sorts, 8 to 12 inches, each sort.....	.50	1.50	2.75		
Echordia, 12 to 18 inches.....	.40	1.25	2.00	9.00	15.00
Golden Bell, three sorts, 8 to 12 inches, each sort.....	.40	1.25	2.00	9.00	
Hydrangea, 1 year, 4 to 8 inches.....	.50	1.50	2.50	11.00	20.00
Japan Quince (scarlet), Rooted Stools.....	.50	1.75	3.00		
Japan Quince (white), Rooted Stools.....	.60	2.00			
Kerria Japonica, Rooted Stools40	1.25	2.00		
Lilac, Common, Rooted Stools40	1.25	2.00		
Lilac, Double, Grafted Plants, 1 year.....	.80	3.00			
Privet, California, 6 to 8 inch30	1.00	1.75	5.50	10.00
Privet, Amor River, 4 to 6 inches.....	.60	2.00			
Spiraea, 5 sorts, 8 inches up, each sort.....	.50	1.50	2.75	12.50	
Snowball, Rooted Layers60	2.25	4.00	15.00	
Weigelia, 7 to 10 inches, 4 sorts, each sort.....	.60	2.25	4.00	15.00	
Weigelia, Variegated, 6to 8 inches.....	.90	3.25	6.00		

VINES AND CREEPERS.

	Per 10	Per 50	Per 100	Per 500	Per 1000
Honeysuckle, 3 sorts, rooted plants, each sort.....	\$.30	\$1.00	\$1.75	\$5.00	\$8.00
Honeysuckle, Golden Netted50	1.50	2.75	12.50	
Ivy, Boston (Ampelopsis Veitchii).....	.50	1.50	2.75		
Silk Vine50	1.75	3.00		
Va Creeper (Englemanni).....	.50	1.50	2.75		
Wisteria, Purple50	1.50	2.75		
Wisteria, White50	1.75	3.00		

Read Terms and Conditions of Sale Before Ordering.

FOREST TREE SEEDLINGS.

	Per 10	Per 50	Per 100	Per 500	Per 1000
Birch, European White, 8 to 12 inches.....	.15	\$.35	\$.60	\$2.75	\$5.00
Birch, European White, 12 to 18 inches.....	.20	.50	.80	3.75	7.00
Catalpa speciosa, 2 year.....	.15	.25	.40	1.75	3.00
Elm, White, 12 to 18 inches, 2 year.....	.15	.30	.50	2.25	4.00
Russian Mulberry, 1 year.....	.15	.25	.40	1.75	3.00
Soft Maple, 8 to 12 inches, 1 year.....	.15	.20	.30	1.25	2.00
Soft Maple, 12 to 18 inches, 1 and 2 year.....	.15	.25	.40	1.75	3.00

EVERGREEN—ROOT CUTTINGS AND GRAFTED.

	Per 10	Per 50	Per 100	Per 500	Per 1000
Arbar Vitae, American, 8 inches and up.....	\$.50	\$1.50	\$2.50	\$11.00	\$20.00
Arbor Vitae, American Golden, 6 to 8 inches.....	.60	2.00	3.50	16.00	
Arbor Vitae, Chinese Selected, 4 to 6 inches.....	.75	2.50	4.50		
Arbor Vitae, Hovey's 6 inches and up.....	.50	1.50	2.50	11.00	20.00
Arbor Vitae, Pyramidal, 4 inches and up.....	.40	1.25	2.00	8.00	15.00
Arbor Vitae, Pyramidal, 6 inches and up.....	.50	1.50	2.50	11.00	20.00
Arbor Vitae, Siberian, 6 inches and up.....	.50	1.75	3.00	15.00	28.00
Arbor Vitae, Woodward, 4 inches and up.....	.40	1.25	2.00	8.00	15.00
Arbor Vitae, Woodward, 6 inches and up.....	.50	1.50	2.50	11.00	20.00
Cypress, Lawson, 6 to 8 inches.....	.80	3.00	5.00		
Cypress, Lawson, Blue, 6 to 8 inches.....	1.20	4.00	7.00		
Juniper, Savin, 6 inches and up.....	.50	1.50	2.50	11.00	20.00
Juniper, Irish, 6 inches and up.....	.50	1.75	3.00	15.00	28.00
Retinospora Plumosa Aurea, 4 to 6 inches.....	.80	3.00			
Retinospora Pisifera Aurea, 4 to 6 inches.....	.80	3.00	5.00		

YOUNG EVERGREENS, CLIMBERS AND CREEPERS.

	Per 10	Per 50	Per 100	Per 500	Per 1000
Cross Vine Bigonia Crucigera.....	\$.60	\$2.00	\$3.50		
Euonymus Radicans Variegated.....	.60	2.00	3.50		
Euonymus Radicans Green.....	.50	1.75	3.00		
Ivy, English, hardy on a stone or brick wall or as a ground vine.....	.50	1.75	3.00		
Vinea Minor (Blue Myrtle).....	.30	1.00	1.75		

MOSS AND MISCELLANEOUS ARTICLES.

Label Wire, brass, per pound.....					\$.50
Labels, Tree, (packing contains 1,000) per package.....					.60
Burlap, per yard.....					.10
Sisal Rope, per pound.....					.15
Binder Twine, per pound.....					.15
Moss, dampened for packing, per 100 pounds.....					1.00
Moss, dry, per bale (in orders of two bales and over @ \$2.00 per bale).....					2.25
The Henry Coil Spring Pruning Shears, postpaid, each.....					1.00
Raffia, per pound.....					.20

THOMAS' AMERICAN FRUIT CULTURIST.

Containing practical directions for the propagation and culture of fruits adapted to the United States. Twenty-first edition, thoroughly revised, greatly enlarged, up-to-date. A very handsome volume of over 800 pages, profusely illustrated with over 800 figures and engravings. Bound in English muslin.

Price, by mail, postage free to all parts of United States, \$3.00.

This book has long been the most practically useful one upon the fruits of the United States, and is today the only one in the English language which is up-to-date, all others being from ten to twenty years old. In this edition entirely new chapters have been added upon insects and diseases. "The Spraying of Fruits," by Prof. Bailey; on Agricultural Experiment Stations; on Wild Fruits; on Nuts; on the Citrus Fruits and other Sub-Tropical Fruits; the Persimmon, etc., by Mr. Hart. Prof. Budd has added descriptions and figures of new Russian apples, while hundreds of new varieties of apples, cherries, grapes, peaches, pears, plums and the bush fruits have been described and figured.

All figures of fruits are drawn to a scale, so as to give a correct idea of size.

NOTE.—Orders for Thomas' American Fruit Culturist will be sent to publishers to be filled, as we do not keep the books in stock.

We want all our customers to read first-class, up-to-date horticultural papers, so as to keep thoroughly posted on horticultural matters. Therefore, after thorough investigation into the merits of the several publications of the character, we cheerfully recommend that you subscribe for as many of the following as you can, each having a special line:

THE AMERICAN TRUCK FARMER, St. Louis, Mo. Special fruit and vegetable paper; fully illustrated; from 16 to 36 pages every month. Regular price is 50 cents a year.

PRACTICAL FRUIT GROWER, "True to Name," Springfield, Mo. Articles by experienced fruit growers a special feature. Published monthly at 50 cents a year. Send 10 cents as a trial subscription for three months.

THE RURAL NEW-YORKER, The Business Farmer's Paper. A national weekly journal for country and suburban homes. Subscription, one dollar a year. Remittances may be made by money order, express order, personal check or bank draft to The Rural New-Yorker, 409 Pearl Street, New York.

Read Terms and Conditions of Sale Before Ordering.

READ THIS.

We want all our customers to read a first-class, up-to-date horticultural paper so as to keep thoroughly posted on horticultural matters. Therefore, after thorough investigation into the merits of the several publications of this character, we cheerfully recommend that you subscribe for the AMERICAN TRUCK FARMER, published at St. Louis, Mo. It is the best fruit and vegetable paper published; fully illustrated; from 16 to 36 pages every month. Regular price is 50 cents a year, but we have arranged for the publishers to accept five subscriptions (four of which must be new ones) for one dollar, if this coupon is used. The paper is worth much more than 50 cents a year. An increase of one bushel of apples or one crate of berries will more than pay the price. Get your neighbors to join you and secure five subscriptions for one dollar. Fill out blank and mail, with one dollar, to **THE AMERICAN TRUCK FARMER, St. Louis, Mo.**

Yours truly,

JAMES B. WILD & BROS., SARCOXIE, MO.

FIVE FOR ONE.

The AMERICAN TRUCK FARMER, St. Louis, Mo.

Gentlemen: As per offer above please find enclosed One Dollar, for which send the AMERICAN TRUCK FARMER one year to

Name.....

Town..... State.....

Name.....

Town..... State.....

Name.....

Town..... State.....

Name.....

Town..... State.....

Name.....

Town..... State.....

Mail this to American Truck Farmer, St. Louis, Mo., not to firm named above.

Four Sections of the J. B. Wild & Bros.' exhibit of Ornamental Evergreens, Deciduous Trees, Etc. at the World's Fair, St. Louis, Mo., 1904, East of Agricultural Building. Other Exhibits we had in the Rose Gardens and near the Floral Clock, besides some at the Missouri State Building.



Embellishments that won the Gold Medal for J. B. Wild & Bros. at World's Fair, St. Louis

Jas. B. Wild & Bros., Sarcoxie, were awarded **A GOLD MEDAL** on their Exhibits in Group 108 on Ornamental Evergreens, Shrubs and Shade Trees.

A SILVER MEDAL in Group 107 on Exhibit of Fruits.

We Furnish Large Estates with Ornamental Trees and Plants

Extensive Growers of Ornamental Trees, Evergreens, Shrubs, Vines, Roses, Peonies, Dahlias, Etc. for Landscape Planting, Parks and Cemeteries.

LONG DISTANCE, MINERAL BELT AND LOCAL PHONES IN OUR OFFICE
Fifteen Minutes Walk from Depot to our Office.

Read Terms and Conditions of Sale Before Ordering.