

## **Historic, Archive Document**

Do not assume content reflects current scientific knowledge, policies, or practices.



62.57 1926

# Asparagus

*The King of*  
*Vegetables*



Mr. Shoemaker and some of his Giant  
Washington "Grass"

## GIANT WASHINGTON ASPARAGUS

==  
RIVERVIEW FARMS

JOSEPH C. SHOEMAKER

BRIDGETON, N. J.,

U. S. A.

Riverview Farms, Bridgeton, N. J. U. S. A.

D. W. Shoemaker



**Home farm.** One of the Riverview Farms in apple blossom time. Mill Creek, a branch of the Cohansey River, in the foreground. The headquarters for over 200 acres of specialized asparagus culture.

The Riverview Farms are a series of farms, lying about three miles South of Bridgeton, N. J., skirting the Cohansey River. The operation comprising 1000 acres, is under the active management of Jos. C. Shoemaker, the sole owner of the Farms.



(Front View—Planting Operation)

1. **Marking Out.** Spacing the rows 6 ft. apart with horse drawn "marker."
2. **Trenching.** Two Fordson Tractors, tandem hitch, pulling heavy asparagus trencher or "middle buster" This plow will open a trench 12 in. wide and 12 in. deep in one operation. See Cultural Directions for proper depth to trench your soil.
3. **Setting Roots.** Wagon loaded with Giant Roots. Boys drop roots in the bottom of the trench, other boys place the roots 18 in. apart in the trench, making sure that the crowns are right side up and spreading the roots fan fashion.
4. **Covering Roots.** Men with heavy hoes covering the roots with about 2 in. of dirt.
5. **Fertilizing.** Team drawing bone "drill"; sowing raw bone meal down the trenches directly on top of the soil-covered roots. Fertilizer is applied later. See Cultural Directions for proper time and method of applying fertilizer without danger of burning or killing the roots.



(Rear View—Planting Operation)

Riverview Farms, Bridgeton, N. J., U. S. A.

## Two thousand years ago.

Asparagus is one of the oldest vegetables, and has been enjoyed widely for over two thousand years. The ancient Greeks first became acquainted with it when they came in contact with their Asiatic neighbors. The Romans obtained it from the Greeks and specialized in its growth for centuries. But from their time until the delicious, delectable Washington variety was produced, practically no improvement was made in varieties of asparagus.

But in those days asparagus was a luxury to be enjoyed by the wealthy. Now, however, Government and private research and breeding have placed this valuable vegetable within the reach of all.

## Health Value.

Everybody enjoys asparagus and its distinctive, delightful flavor. It can be eaten in countless ways. Hot, cold, as a vegetable, as a soup or salad. It should form part of the diet of everyone throughout the season, not only because of its pleasing taste but also because it is a health builder.

Asparagus stimulates secretions, literally makes your mouth water. It is an appetizer and aids digestion. Its action on the kidneys and valuable diuretic properties are well known to the medical profession. It is one of the very best of the bulk vegetables that act as sweepers in the intestines. It forms firm muscles—it contains iron. It makes strong bones—it contains lime. It is rich in vitamins and so forms a wonderful energizer.

But there is one thing to be remembered—asparagus that is not fresh loses a large proportion of its valuable elements when it is cooked. For this reason alone, aside from matters of economy, of convenience, of beautifying the garden and the home, an asparagus bed should be a part of every well planned home garden.

## The Asparagus Bed

An asparagus bed is a permanent investment. For that reason the most important thing for you to decide, while you are planning it, is the VARIETY. Next, is the AGE of ROOTS; and third, but of scarcely less importance, is the SIZE of ROOTS that you are going to put in. For on these three things will depend the relative success of your efforts.

## The Variety

Washington Asparagus is the outcome of 15 years' research by the U. S. Dept. of Agriculture; it is disease (rust) resistant. The Riverview Farms strain of Giant Washington Asparagus is a combination of the female plants, Mary and Martha, together with other selected female plants that have been approved by the U. S. Dept. of Agriculture; all bred to the male plant, Washington. For several years we have been selecting and reselecting the very best seedlings for our own plantings, so that today we are growing a super-

Riverview Farms, Bridgeton, N. J., U. S. A.



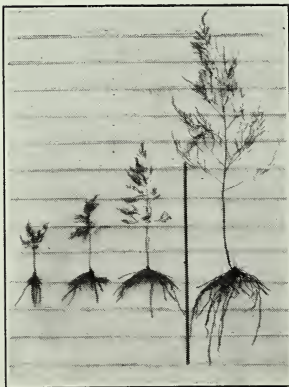
Asparagus Field Six Weeks Old

Showing trenches half filled in—plants 24 in. to 36 in. high.



Asparagus Field Six Months Old

Showing trenches filled in and plants 5 ft. to 6 ft. high. Also showing the growth you may expect to have at the end of the first growing year, provided the planting has been made with Giant Roots. This particular field was set in May 1923 and the top grade of Giant Washington Asparagus cut from it the following year (May, 1924) sold in the New York market for \$12.00 per dozen bunches. Giant Roots set this year will insure you a cash return next year.



#### Giant Roots

Showing the importance of quality in asparagus roots. The one on the right represents our one year old Giant Roots. It produced a plant four feet high in less than six weeks from time of setting. It never pays to plant roots like the one on the left. A 3 ft. rule is used to show comparative heights of No. 1 (Giant); No. 2, (Prime); No. 3, (Choice) and "Cull" roots—they are all one year old. "Cull" roots are worthless.

strain that is far superior to many of the other Washington Strains—it is so "rust resistant," so strong and vigorous and it produces such a profusion of giant stalks that we call it GIANT WASHINGTON ASPARAGUS. In our own fields many plants at two years of age attain a height of nine feet. It makes the highest yields of fancy asparagus. And what asparagus it produces! Giant stalks from one to two inches thick. Green, purple tinted shoots, so tender that they seem to melt in your mouth. Asparagus that grows to at least ten inches before branching, and which has the most succulent, delightful nut-like flavor. Asparagus that always brings a premium price in market over the ordinary varieties. \$14.00 per dozen bunches wholesale (\$1.50 to \$2.00 per bunch retail) is not an uncommon price for our fancy grades.

### The Rust Resistant Variety of Giant Washington Asparagus

Many have been deterred from planting an asparagus bed for fear of asparagus rust. Introduced in this country in 1895, this disease ravaged terribly all asparagus plantings throughout the country and many ceased to fight a seemingly hopeless battle. Then Washington Asparagus was evolved. It is not only rust resistant but it gives such high yields, it is so easy to grow and it produces asparagus of such appearance and quality that growers and gardeners all over the country have adopted the Washington Variety almost to the exclusion of other kinds. Washington Asparagus is more particularly described in "U. S. Circular No. 7, Washington Asparagus" published by U. S. Dept. of Agriculture, Bureau of Plant Industry, Washington, D. C.

### One Year Roots

Commercial Growers and Plant Specialists have proved that plantings with one year old roots do better and yield better than with two or three year old roots. A one year root is better able to withstand the shock of transplanting, it starts off quicker, it establishes itself quicker and better—it is sure to live. An asparagus bed planted with one year roots will always yield more asparagus and better asparagus than a bed planted with two or three year old roots. These are proven facts—do not be deluded into planting two or three year old roots and later regret it.

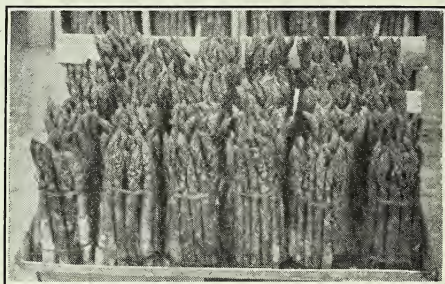
### Giant Roots.

Carefully recorded experiments, over a period of years, prove that it pays best to plant the very largest and most vigorous roots, those that have well developed crowns and well developed root systems. Our Giant Roots are carefully selected one year old roots, with well developed crowns and a root system ranging from 10 to 24 inches from crown to tip of root system. They produce fancy asparagus and more of it.



**A Very Fine Field of "Grass"**

Giant Washington Asparagus 2 years and 5 months old from a planting of our Giant Roots made in May 1921. This field was cut 8 weeks (a full cutting period) in 1923, from May 1st to July 1st inclusive. The average sale price of the entire crop for the Season was \$6.13 per dozen bunches delivered to the New York, Philadelphia and Boston Markets. Many plants are over 9 ft. tall.



A typical tray of Giant Washington Asparagus. Note the uniformity and giant size.

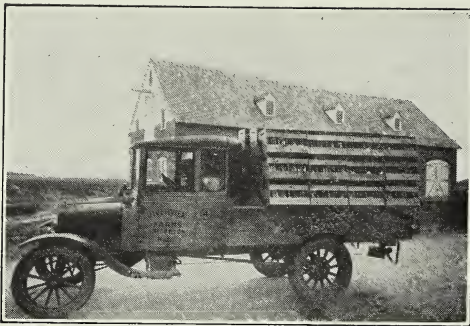


Seedlings five feet high—grown from seed in five and a half months.

Top growth up to standard and root system well developed. 75% of these seedlings classed as Giant Roots, averaging well over 12 inches and many of them ranging between 24 inches and 36 inches from crown to tip of root system.

**Riverview Farms, Bridgeton, N. J., U. S. A.**





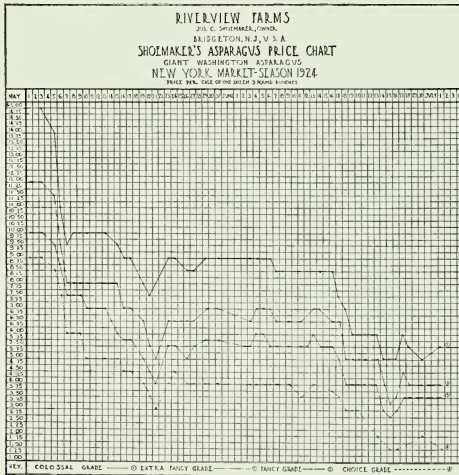
**A Small Load of Giant Washington Asparagus**

A small load but high in price—one Ford truckload of 54 crates (one dozen 3-lb. bunches to the crate) sold in New York Market on May 5, 1924, for \$601.50, or an average price of \$11.14 per crate. The high price was \$14.00 per crate, the low price was \$8.50 per crate. This was an average load, graded to 4 sizes, as is our custom; viz. (No. 1 or Colossal Grade, No. 2 or Extra Fancy Grade, No. 3 or Fancy Grade and No. 4 or Choice Grade.) The weight of the "grass" was 1944 lbs. net, or at the rate of 30c lb.



**A Fine Stalk of Giant Washington Asparagus**

This stalk is 1½ in. in diameter and 9½ in. long. Ten stalks like this make a 3 lb. bunch. Wholesale price of this Grade in May 1924 was 12½c per stalk in the New York Market.



**Asparagus Price Charts**

We have carefully recorded the Sale Price on "graded" Giant Washington Asparagus (4 grades being made) for the years 1923 and 1924 in the New York and Philadelphia markets.

Four Price Charts have been compiled; namely, Phila. 1923, Phila. 1924; New York 1923, New York 1924. These may be purchased as indicated in our Price List.

A careful study of these Price Charts will prove interesting, instructive and most profitable to the Commercial Grower. If you are contemplating the growing of Asparagus for Market, you will profit by a careful study of these Price Charts. Full size of each chart is 9 in. x 9 in.

**Giant Roots are time savers and money savers.**

The commercial grower ordinarily would not think of cutting his bed under 3 years. By planting our one year Giant Roots you can safely cut Washington Asparagus 2 to 4 weeks next year and the returns will more than cover the cultivation costs for the entire year. In succeeding years these Giant Roots can be safely cut for the entire cutting period of 8 weeks. You can save from 2 to 3 years' time and approximately \$300.00 per acre by planting these Giant Roots.

**Selected Seed.**

Our Giant Washington Asparagus Seed is selected only from mature plants grown from our Giant Roots; modern machinery is used to prepare it and separate the small and non-viable seeds; consequently it is of high germination. By the most careful selection, we maintain the quality of our Giant Washington Asparagus.

Our Giant Washington Asparagus Seed will produce Giant Roots within six months from the time seed is planted.

**Two Hundred Acres of Giant Washington Asparagus.**

At Riverview Farms two hundred acres are devoted to the exclusive culture of Giant Washington Asparagus—said to be the largest and best planting of Washington Asparagus in the United States.

**Garden Plantings.**

Fifty of our Giant Roots, if well cared for, will provide the average family with an abundant table supply throughout the entire cutting season. It will last from 16 to 20 years when it should be renewed. It is easily put in and the care it requires can be given by an amateur gardener. Fifty Giant Roots will set a row 150 ft. long (or 3 rows, each 50 ft. long) when spaced 3 ft. apart in the row, as recommended in our Cultural Directions for Garden plantings. For those who wish to grow their own roots we have provided convenient sized Seed Packets—each Seed Packet contains a liberal quantity of Selected Seeds, and if our Cultural Directions are followed out, should furnish enough Giant Roots for several large family gardens.

**Commercial Plantings.**

A five or ten acre planting is recommended for the average commercial grower—five acres if he intends to care for it with his own help—ten acres if he hires an extra family to care for the cutting and bunching during the cutting period, which is of about eight weeks' duration. Six persons should be able to cut and bunch the product of a ten acre planting. It requires 5000 roots to plant one acre to asparagus, when plants are set 18 inches apart in the row, and rows 6 feet apart, as recommended in our Cultural Directions for Commercial Plantings.



Five pounds of our seed sown on one acre, in accordance with our Cultural Directions, should produce from 35,000 to 40,000 Giant Roots and setting 5000 roots per acre should plant 7 to 8 acres of Giant Washington Asparagus.

### Soil and Climate.

Washington Asparagus will grow on any well drained soil, and adapts itself to almost any climatic conditions. We have good reports on our last year's seeds and roots from Alaska to the Canal Zone. It delights in a rich sandy soil, which preferably should be free from stones. Stones are likely to cause crooked stalks and dull the knives of the cutters.

### Blanched or Green Asparagus.

Both blanched and green asparagus can be grown from Washington Roots, the difference being largely one of cultural method. Washington is naturally a Green Asparagus but by "ridging" up the soil so as to cover the stalks, blanched (white) asparagus can be produced.

### Guarantee.

We absolutely guarantee that our Washington Seeds and Roots are true to name. No other variety of asparagus is grown on our Farms, and therefore it is impossible for it to become mixed with some other variety.

### References:

We refer you to Dun's or Bradstreet's Commercial Agencies. The Bridgeton National Bank or any other bank in Bridgeton, N. J., will vouch for our financial responsibility, integrity and moral standing.

### Cultural Directions.

The most complete Cultural Directions, with information on planting, fertilizing, cultivating, etc., are sent free with each order. Washington Asparagus is very much easier to grow than most garden or field crops. Our Cultural Directions cover everything you need to know in order to produce a fine bed of asparagus, whether it be 100 feet long or 100 acres in extent.

### When to Plant.

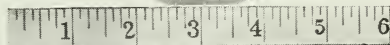
Plantings of either Seed or Roots may be made from March 15th to May 15th (in New Jersey—other sections accordingly) but the earlier the better.

### Prices.

Upon request we will be glad to send you our latest Price List on both Seeds and Roots of our Giant Washington Asparagus.

### When Orders can be Shipped.

Seed orders are usually shipped a few days after order is received. Root orders are shipped at the usual digging time, just as soon as the frost comes out of the ground in the Spring, which is usually in March and April. However, by special arrangement, roots may be shipped any time between Nov. 1st and May 1st.



Stalks 2 in. in diameter—8 stalks to the bunch. Sale Price—\$15.00 per dozen bunches in the New York Market in May 1924.

Start with Giant One-Year Roots, follow carefully our Cultural Directions and you, too, can grow Giant Washington Asparagus—Stalks 2 in. in diameter, 8 stalks to the bunch. Ordinary Asparagus means nothing. Giant Washington Asparagus means real profits and real satisfaction.



### Acknowledgment of Remittances and Orders.

Where delays in the prompt shipment of orders are unavoidable, as in the case of "Roots" or for any unforeseen reasons, a receipt will be promptly mailed, acknowledging your remittance and order, and an approximate delivery date will be stated.

### Visitors Welcome.

We extend to you a cordial invitation to come and visit Riverview Farms which are now known the world over as "The Washington Asparagus Farms." An exchange of ideas will undoubtedly be of mutual benefit.

