

Historic, archived document

Do not assume content reflects current scientific knowledge, policies, or practices.

6-83
-1263

"Southern
Beauties"

ROSES

from

ROSEMONT NURSERIES

A. L. THOMPSON, Owner

Box 839

TYLER, TEXAS



REV. F. PAGE-ROBERTS

2-yr., heavy plants, 60 cts. each; \$6.00 per doz., prepaid

REV. F. PAGE-ROBERTS

A gorgeous golden yellow Rose, with the outside of the petals stained red. The flowers are full double, extra large, and carried on long stems. 2-yr., heavy plants, 60 cts. each; \$6.00 per doz., prepaid.

FRONT COVER COLLECTION NO. 2

We will send two plants of each of the three
Roses pictured on this page for
These are our usual standard, heavy, 2-yr. plants

\$3.20
Prepaid



PRISCILLA

2-yr., heavy plants, 60 cts. each; \$6.00 per doz., prepaid

PRISCILLA

Both the bud and the flower are very large and carried on long stems, thus making the variety desirable for cutting. As shown in the illustration, the outer petals are rose-pink with the center a deeper pink. 2-yr., heavy plants, 60 cts. each, \$6.00 per doz., prepaid.

FRONT COVER COLLECTION NO. 1

We will send one each of the three Roses
pictured on this page—Priscilla, Rev. F.
Page-Roberts, Margaret Belle Houston, for **\$1.60**
Prepaid

These are our usual standard, heavy, 2-yr. plants

MARGARET BELLE HOUSTON

Introduced in 1929, this Rose at once became a favorite variety. The color is velvety crimson; blooms full double, borne on unusually long stems. We think it one of the best of the red Roses in our collection. 2-yr., heavy plants, 75 cts. each, \$7.50 per doz., prepaid.



MARGARET BELLE HOUSTON

2-yr., heavy plants, 75 cts. each,
\$7.50 per doz., prepaid

Roses from the Great Rose Region of the Lone Star State



Here Are Simple Suggestions for Growing Prize-Winning Roses

Time to Plant. We advise fall planting when and where possible. You should be guided by climatic conditions in your section and the experience of successful local gardeners. We usually begin shipping about October 1 and continue until April 1, but find the late spring plantings do not survive the first summer as well as the earlier plantings.

Any good soil, in a sunny location, and away from trees and shrubbery, is right for Roses. The soil should be spaded or plowed deeply, and all plant-food placed as far down as possible. (See illustration below.)

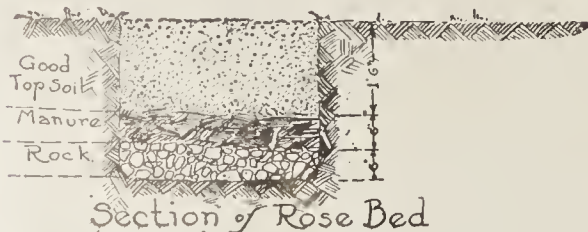
Rosemont Roses are pruned, ready for setting—they will not need further pruning the first season. If roots should be broken in packing, cut them off before planting.

Make the hole deep, and be sure that the plant is set low enough so that the bud-union will be at least 2 inches below the top of the soil, and the roots spread as shown in the illustrations at bottom of this page. Pack the soil tightly around the roots, but leave the top-soil slightly loose to act as a mulch and to retain moisture. If fertilizer is required on the surface, spread it carefully and work into the top-soil, but avoid having fertilizer or plant-foods in direct contact with the roots.

Should watering be required in dry weather be sure to soak the soil thoroughly. A light sprinkling is almost useless. Good cultivation and loose top-soil, or a mulch of peat moss, is surely as important as watering.

Mildew and black-spot may be controlled with a mixture of 9 parts dusting sulphur to 1 part arsenate of lead, applied weekly with a dusting-gun or muslin bag.

When cutting the blooms, be sure to let two leaves remain on the branch. (See illustration.)



No matter what Rose enthusiasts say about getting results from Roses, the plants are the first thing to consider and study. The plants are both foundation and super-structure of the successful garden. Poor soil can be replaced or fertilized; proper drainage can be supplied; insects and diseases can be controlled. But weak, stunted, store-dried plants are always a disappointment. No amount of cultivating or coddling will make them into strong-growing and free-flowering Rose bushes.

Rosemont provides the foundation for a Rose-garden that will give satisfaction and joy: Better Plants and Better Varieties.

“It matters not what goal you seek,
Its secret here reposes:
You’ve got to dig from week to week
To get results or ROSES.”—Edgar A. Guest.

With due respect to Mr. Guest, it is not necessary to burden yourself with such a task. Most gardeners find pleasure and recreation in the garden. Another equally enthusiastic writer speaks thus—

“But these light gardening operations are not labor, they are a delightful amusement to a refined mind, and lead it to reflect on the wonderful infinites of Nature.”—Rivers.

So there is no reason to be discouraged. Remember, first, Rosemont plants, then your love and care will determine the results.

PREPAID PRICES FOR ROSES IN LARGE QUANTITIES

Single Plants	6 or more	25 or more	49 or more	100 or more
45-ct. Roses	37 cts. each	34 cts. each	33 cts. each	30 cts. each
50-ct. Roses	41 cts. each	38 cts. each	37 cts. each	35 cts. each
60-ct. Roses	50 cts. each	47 cts. each	45 cts. each	40 cts. each
75-ct. Roses	63 cts. each	60 cts. each	55 cts. each	50 cts. each

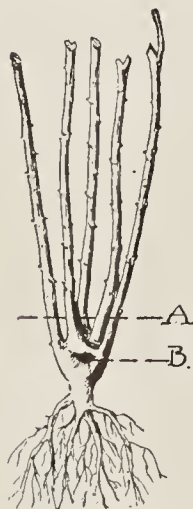
PLEASE NOTE. An order may be assorted and the above quantity prices will apply. Patented Roses do not take quantity rates except as quoted on pages 20 and 21.

OUR GUARANTEE

We guarantee to deliver our Roses to you in first-class growing condition, and that they are true to label. Should you receive a Rose plant from us which proves to be untrue, we will replace same without cost to you. We have no control over the forces of nature and the care plants will receive; hence we cannot guarantee them to live.

Rosemont Roses have bloomed profusely one year before being shipped to you; with proper care they will begin blooming early the first summer.

PLEASE NOTE. We do not prepay transportation charges on orders amounting to less than \$1.50. Purchaser must pay such charges. Get your friends and neighbors to club with you and obtain the better rate for large orders. Good dependable Roses cannot be bought cheaper.



A. Shows depth to plant.
B. Shows where plant was budded



Rose plant with top cut back and long roots shortened



The result of proper planting and pruning



The black line shows where to cut. Let two leaves remain on the bush.



A field of ROSEMONT ROSES located just West of Tyler



ROSEMONT NURSERIES 🌹 🌹 🌹 🌹
are located in the center of the Great Rose Region of the Lone Star State. Tyler has been aptly called the "Rose-Garden of America," for the reason that more than 6,000,000 Rose plants, or one-third of the Nation's supply, are grown here annually. There are great fields in full bloom to be seen during early summer and on until frost in the autumn.

All Texas invites you to become her guest in 1936 during her Centennial celebration. We urge you to visit our Rose-fields. After enjoying their marvelous beauty and alluring odor, you will forget the old Texas of the past, land of long-horned cattle, toads, and cacti.

ROSEMONT NURSERIES
TYLER • TEXAS

ROSEMONT'S Selected New



Autumn



Betty Uprichard



Briarcliff



Caledonia

ROSEMONT COLLECTION NO. 2 EIGHTEEN WONDERFUL ROSES

PICTURED ON THESE PAGES

For full descriptions, see pages indicated

All selected from our New and Scarce Roses. We have grown them, they have bloomed for us, and we commend them to you as Roses that have few equals and no superiors.

- | | |
|---------------------------------|---|
| Autumn. See page 5. | Margaret McGredy. See page 7. |
| Angèle Pernet. See page 4. | Mev. G. A. van Rossem. See page 7. |
| Betty Uprichard. See page 5. | Miss Rowena Thom. See page 7. |
| Briarcliff. See page 5. | Mrs. Erskine Pembroke Thom. See page 8. |
| Caledonia. See page 5. | Mrs. Lovell Swisher. See page 8. |
| Charles K. Douglas. See page 5. | Padre. See page 9. |
| Dame Edith Helen. See page 6. | Patience. See page 9. |
| E. G. Hill. See page 6. | Wilhelm Kordes. See page 10. |
| Golden Dawn. See page 6. | |
| Grace Noll Crowell. See page 6. | |



Margaret McGredy



Mrs. Lovell Swisher

OFFER NO. 1. We will send One plant each (18 plants) of these Roses, 2-yr., heavy plants, **\$8.95** prepaid, for only

OFFER NO. 2. We will send any Twelve of these Roses (including Mrs. U. M. Rose), your selection, prepaid for **\$5.95**

OFFER NO. 3. We will send any Six of these Roses (including Mrs. U. M. Rose), your selection, prepaid for **\$3.00**

Every Rose in this list is 2 years old and has bloomed profusely 1 year in the field. We do not attempt to grow every variety of new Rose offered to the public but have selected the best of those which have been tested and proved worthy. We endeavor to have every Rosemont Rose, a Rose worth while, deserving space in your garden.

All New and Scarce Roses, 60 cts. each, \$6.00 per doz., prepaid, except where otherwise stated.

TRANSPORTATION CHARGES PREPAID ON ORDERS AMOUNTING TO \$1.50 AND OVER

AMI QUINARD. HT. (1930.) Mme. Meha Sabatier × unnamed seedling (Mrs. Edward Powell × Austrian Copper). Long-pointed, medium-sized bud; flower medium size, semi-double, open, cupped, lasting, fragrant, deep velvety crimson, borne singly and several together on good stem. Dark green, leathery, disease-resistant foliage. Vigorous, upright, bushy grower.

ANGELE PERNET. HT. Bénédicte Seguin × unnamed Perctiana. Bud large, oval; flower very large, globular, double, unusually lasting, extremely fragrant, reddish orange, shaded chrome-yellow, borne singly on long stem. Abundant, bronzy green foliage. Profuse, continuous bloomer.



Padre



Mrs. E. P. Thom

Rosemont Roses

Are grown on de-eyed understocks; hence they will not sucker nor throw wild shoots from the roots. Our liberal guarantee (see page 2) covers all Rose plants grown and shipped by us, and prices given in this catalogue cover transportation charges to your door. Our quantity discounts are most liberal—why not make a "club order" with your friends and secure the low prices?



Mrs. U. M. Rose

and Scarce Everblooming ROSES



Charles K. Douglas



Dame Edith Helen



Golden Dawn



Grace Noll Crowell



Mevrouw G. A. van Rossem



Miss Rowena Thom

AUTUMN. HT. (1928.) Sensation × Souv. de Claudius Pernet. Bud medium size, ovoid, burnt-orange; flower medium size, double, eupped, lasting, moderately fragrant, burnt-orange, streaked with red, borne singly on medium-length stem. Foliage abundant, leathery, glossy, disease-resistant. Good upright grower; free and continuous bloomer. 2-yr., heavy plants, 75 cts. each, \$7.50 per doz., prepaid.

BETTY UPRICHARD. HT. Good-sized, long-pointed bud; flower large, open, semi-double to double, very lasting, extremely fragrant, delicate salmon-pink, reverse of petals carmine with coppery sheen, borne singly and several together on long stem. Foliage large, light green, leathery, glossy. Growth vigorous; profuse bloomer all summer.

BRIARCLIFF. HT. (1926.) Sport of Columbia. Bud one third longer than Columbia, very large, long-pointed; flower 4½ inches across when well developed, high-centered, lasting, moderately fragrant, deep rose-pink at center, passing to lighter on outer petals, borne singly on long, strong stem.

CALEDONIA. HT. (1928.) Bud large, long-pointed; flower large, very double, high-centered, extremely lasting, slightly fragrant, white, borne singly on long, strong stem. Foliage large, leathery, dark green, disease-resistant. Free, continuous bloomer. One of the prettiest white Roses.

CECIL. See page 12.

CHARLES K. DOUGLAS. HT. Bud large, long-pointed; flower large, full, double, fragrant, flaming scarlet, flushed velvety crimson. Foliage dark green, disease-resistant.

CHARLES P. KILHAM. HT. (1926.) Large, well-shaped flower of brilliant Oriental red-orange, suffused with scarlet, becoming brilliant red with age; faintly tea-scented. Good foliage. Vigorous, upright, bushy grower.

CHATEAU DE CLOS VOUGEOT. HT. (1908.) Bud medium size, ovoid; flower medium size, double, open, very lasting, moderately fragrant, bright velvety red, overlaid dark garnet, borne singly and several together on medium-length, strong stem. Foliage sufficient, medium size, dark green, leathery, disease-resistant. Growth moderate (10 to 15 in.), sprawling; continuous bloomer all season.

CUBA. See page 12.

DAINTY BESS. See page 12.



E. G. Hill



Patience



Wilhelm Kordes

Rosemont Roses

Have bloomed freely in the fields one year before being shipped to you, thus proving their value to the purchaser. When transplanted to your garden and given proper care the plants should reward you with a great quantity of flowers the first summer. Rose plants are not plentiful this year and your order should be placed as soon as possible.

Throughout this Catalogue you will find Rose Collections that include some of the finest varieties obtainable. These plants are grown at Rosemont—we know their quality, and know that if given reasonable care they will thrive, bloom, and give you months of joy in your Rose-garden.



New and Scarce Everblooming Roses

DAME EDITH HELEN. HT. Bloom very large, full, double, high-centered, with recurving petals, lasting, intensely fragrant, pure glowing pink, borne singly on long, strong stem. Foliage medium size, rich green, leathery, disease-resistant. Growth vigorous, upright, bushy; profuse, continuous bloomer all season.

DAVID O. DODD. HT. (1926.) Bud medium size, globular; flower large, very double, full, lasting, intensely fragrant, rich crimson, flushed scarlet, borne singly on stem of average length and strength.

EDEL. HT. (1919.) Type, Florence Forrester. Bud and flower very large, double, well built, stately, opens well in all weathers, sweetly fragrant, white, with the faintest ivory shading toward base, passing to pure white. Foliage bold and distinct. Very vigorous grower; free bloomer.

EDITH NELLIE PERKINS. HT. (1928.) Large bud; medium-sized flower, double, open, lasting, moderately fragrant, outside of petals Oriental red shaded cerise-orange, inside salmon-pink flushed orange, borne singly on very good stem. Good, upright, bushy grower.

E. G. HILL. HT. (1929.) Bud very beautiful; flower immense, unusually lasting, dazzling scarlet, shading to a deeper pure red as it develops, but never showing purple, borne on long stem. Foliage abundant, of fine color. Growth vigorous; very free bloomer.

ETOILE DE HOLLANDE. HT. This Rose is comparatively new and its worth has been realized more and more as it has been tried out. It is considered by Rose experts to be one of the best red Roses on the market today. Flower moderately double, especially attractive when half blown. Its dark red overlaid with almost black velvet shadings is irresistible.

GOLDEN DAWN. HT. (1929.) Elegante x Ethel Somerset. Bud rich sunflower-yellow, flushed old-rose; well-formed, double flower, sweetly fragrant, sunflower-yellow passing to lemon-yellow with age. Vigorous grower; profuse bloomer. One of the best.

GRACE NOLL CROWELL. HT. (1929.) Bud very large, long-pointed; flower extremely large, very double, high-centered, unusually lasting, fragrant, rose-pink slightly shaded cream at base, borne singly on long, strong stem. Soft, light green foliage, disease-resistant. Few thorns. Good grower; profuse bloomer. Should be classed as one of the best pink Roses.

INNOCENCE. See page 13.

JOANNA HILL. HT. (1928.) Mme. Butterfly x Miss Amelia Gude. Bud extremely large, very long-pointed; flowers large, semi-double, full, unusually lasting, moderately fragrant, darker yellow than Sunburst, borne singly on long, strong stem. Foliage large, dark green, leathery. Few thorns. Growth vigorous, upright; profuse bloomer.

**ROSEMONT COLLECTION NO. 3
TWELVE SELECTED ROSES**

PICTURED IN COLOR ON PAGES 6 AND 7

Ami Quinard. See page 4.	Mrs. Henry Morse. See p.8.
John Russell. See page 7.	Mrs. Pierre S. du Pont.
Julien Potin. See page 7.	See page 9.
Lucie Marie. See page 7.	Pilgrim. See page 9.
Lulu. See page 13.	Rapture. See page 9.
May Wettern. See page 7.	Souv. de Georges Pernet.
Miss Willmott. See page 7.	See page 10.

OFFER NO. 1. We will send One plant each (12 plants) of the Roses here pictured, 2-yr., heavy plants, prepaid, for only. **\$5.80**

OFFER NO. 2. We will send any Six of the Roses here pictured, your selection, prepaid, for only. **\$2.95**



Lucie Marie



Souv. de Georges Pernet



Lulu



Ami Quinard



John Russell



Rapture

New and Scarce Everblooming Roses

JOHN RUSSELL. HT. Bud large; flower very large, beautifully shaped, extremely double, scentless, rich glowing crimson flushed deeper—almost black. Foliage good all summer; mildew-proof. Free bloomer.

JULIEN POTIN. HT. (1927.) Souv. de Claudius Pernet × unnamed seedling. Bud long-pointed, chrome-citron-yellow; flower large, double, full, cupped, high-centered, pure primrose-yellow, borne on long, strong stem.

LADY MARGARET STEWART. HT. (1926.) This variety is an aristocrat among Roses. Bud very large, long-pointed, orange, shaded yellow, with cerise markings; bloom extremely large, double to very double, full, high-centered, unusually lasting, intensely fragrant, deep buttereup-yellow, flushed orange and red, borne singly on long, strong stem. Foliage abundant, large, sage-green, leathery, glossy, disease-resistant. Continuous bloomer all season. Has won highest honors among Roses.



Miss Willmott



May Wewtern



Mrs. Henry Morse



Mrs. Pierre S. du Pont



Julien Potin



Pilgrim



LORD CHARLEMONT. HT. Bud medium size, very long-pointed; flower large to very large, double, high-centered, perfectly shaped, lasting, extremely fragrant, deep clear crimson. Free, continuous bloomer.

LUCIE MARIE. HT. (1930.) Very long-pointed bud, deep yellow, splashed red; large, full flower, lasting and sweetly fragrant, buttereup-yellow, washed apricot-orange and shaded cerise. Dark green, leathery foliage.

LULU. See page 13.

MARGARET McGREDY. HT. (1927.) Bud very large, long-pointed; flower extremely large, double, lasting, moderately fragrant, orange-scarlet that does not fade, even in the open flower, borne singly and several together on long, strong stem. One of our prettiest and most satisfactory Roses.

MARGARET BELLE HOUSTON. HT. (1929.) Very large, ovoid bud; flower extremely large, unusually double, lasting, fragrant, velvety crimson, borne singly on long, graceful stem. The shape, coloring, and texture of this Rose is unusually beautiful. It is one of the prettiest, if not the prettiest, red Roses we grow. (See front cover for color illustration.) 2-yr., heavy plants, 75 cts. each, \$7.50 per doz., prepaid.

MAY WETTERN. HT. (1928.) Type, Killarney. Bud very large, long-pointed; flower large, double, full, high-centered, unusually lasting, moderately fragrant, rosy pink, borne singly on long, average-strength stem. Profuse, continuous bloomer. Should be classed as one of the best pinks.

MEVROUW G. A. VAN ROSSEM. HT. (1926.) Souv. de Claudius Pernet × Gorgeous. Bud ovoid, opens freely in dull and moist weather; flower large, double, full, very fragrant, borne singly on long stem, heavily flamed and shaded orange and apricot on a dark golden yellow ground, reverse of petals often dark bronze and nearly brown when bloom first opens. Good foliage. Excellent bloomer.

MISS ROWENA THOM. HT. (1927.) Radianee × Los Angeles. Bud very large, long-pointed; flower enormous, opens perfectly, color a blending of fiery rose and rosy mauve, together with old-gold, center rose washed with gold, borne on long, strong stem.

MISS WILLMOTT. HT. Large, well-shaped flower, double, moderately fragrant, uniform soft sulphury cream, with faintest flush of pale pink at the edges. Good grower of bushy, branching habit.

MRS. A. R. BARRACLOUGH. HT. (1926.) Bud very large, long-pointed; flower extremely large, double, high-centered, very lasting, slightly fragrant, bright, soft, sparkling carmine-pink of even shade throughout, shading to yellow at base, becoming brighter with age, and borne on long, strong stem. A profuse, continuous bloomer. Very hardy.



Mrs. Dunlop Best

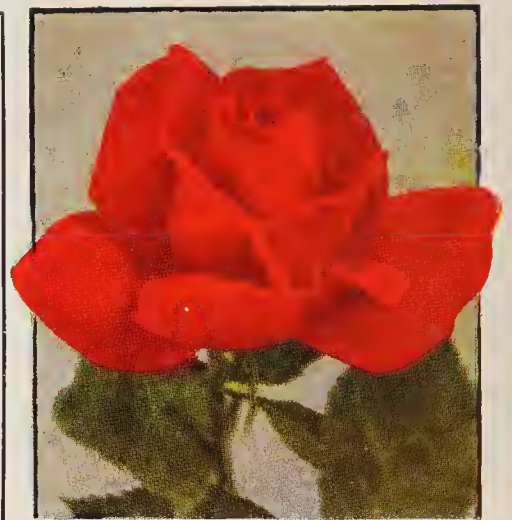
ROSEMONT COLLECTION No. 4
Twelve Selected Roses

Pictured in color on pages 8 and 9

Charles K. Douglas. See page 5.
 Charles P. Kilham. See page 5.
 Mme. Nicolas Aus- sel. See page 11.
 Mrs. Dunlop Best. See page 11.
 Mrs. George Shaw- yer. See page 18.

Mrs. Henry Bowles. See page 8.
 Mrs. Henry Win- nett. See page 11.
 Olympiad. See p. 9.
 Petit Jean. See p. 11.
 Killarney, Double White. See page 18.
 Roslyn. See page 10.
 Sunkist. See page 11.

OFFER. We will send One plant each (12 plants) of the Roses here pictured, 2-yr., heavy plants, prepaid, for only **\$6.20**



Mrs. Henry Winnett

New and Scarce Everblooming Roses

MRS. ERSKINE PEMBROKE THOM.

HT. Grange Colombe x Souv. de Claudius Pernet. Bud large, long-pointed; flower large, perfectly formed, very lasting, moderately fragrant, high-centered, fully double, clear deep canary-yellow without a trace of shading, borne singly on long, strong stem. A leading yellow Rose of merit.

MRS. F. R. PIERSON.

HT. (1926.) Sport of Premier. Type, Premier. Bud very large, long-pointed; flower very large, double, full, deep-petaled, of exquisite form, very lasting, richly and enduringly fragrant, crimson, shaded with vivid scarlet, borne several together on long, strong stem. Foliage large, green, glossy. Growth very vigorous, upright, bushy; profuse bloomer.



Charles P. Kilham

MRS. HENRY BOWLES. HT.

Large, well-shaped, high-centered flower, extremely lasting, very fragrant, warm shade of pink, flushed salmon, borne on long, strong stem. Upright grower; free, continuous bloomer.

MRS. HENRY MORSE. HT.

Very large, long-pointed bud; flower exceptionally large, high-centered, double, moderately fragrant, flesh-cream ground, with sheen of bright rose, shaded vermilion; clear vermilion veining on petals.

MRS. LOVELL SWISHER. HT.

(1926.) Unnamed seedling x Souv. de Claudius Pernet. Bud large, beautifully pointed, deep coppery salmon, opening to perfectly formed, double, moderately fragrant flower of delicate salmon-pink, passing to flesh on the edges. Blooms singly on long stem. Vigorous grower with clean bronzy foliage.

Read our liberal guarantee on page 2. This is your insurance policy of high-quality Roses.

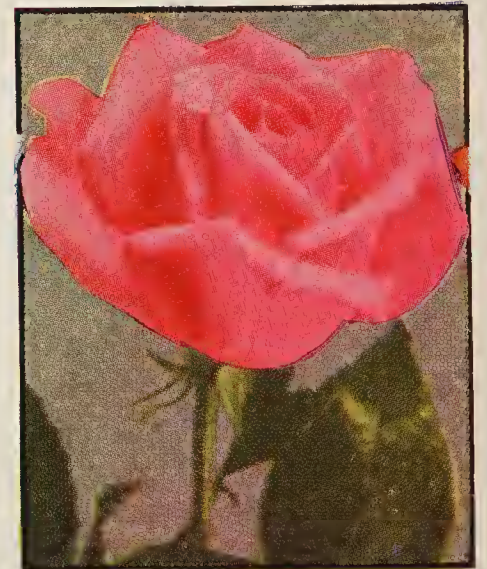
Remember that our prices include transportation charges on orders amounting to \$1.50 and over.



Mrs. Henry Bowles



Petit Jean



Mrs. George Shawyer

New and Scarce Everblooming Roses



Sunkist

MRS. PIERRE S. DU PONT. HT. (1929.) Ophelia × unnamed seedling of *R. foetida bicolor* parentage. Medium-sized, long-pointed bud of reddish gold; flower medium size, semi-double, cupped, moderately fragrant, deep golden yellow, becoming slightly lighter with age. Abundant, rich green foliage.

MRS. U. M. ROSE. HT. (1931.) A wonderful new Rose having large blooms of brilliant rose-pink. During cool weather the color deepens and is sometimes almost a red. Good grower. An excellent garden Rose. 2-yr., heavy plants, 75 cts. each, \$7.50 per doz., prepaid.



Olympiad

OLYMPIAD. HT. (1931.) A handsome new red Rose. Long-pointed bud of flame-scarlet, opening into a high-centered,

fragrant blossom of good size, with recurving petals, borne singly on long, strong stem. Its unusual shade of red has a strong undertone of orange-yellow, flashing yellow at base of petals. Truly a wonderful Rose.

PADRE. HT. Flower shapely, of good substance, medium size, semi-double, fragrant, bright coppery scarlet, flushed with yellow, borne on long, strong stem. Foliage large, rich green, leathery, glossy, and has not mildewed with us. Good grower and abundant bloomer.

PATIENCE. HT. (1927.) Long-pointed, medium-sized bud; flower large, double, high-centered, very lasting, moderately fragrant, scarlet-carmine, passing to deep orange at base, shading to orange-scarlet, borne singly and several together on medium-length stem. Foliage dark green, glossy, leathery. Moderately bushy habit of growth.

PILGRIM. HT. A very large, double, delightfully fragrant, silvery pink Rose. It has a large number of petals and never shows its center. The open flower appears to be flat.

PRESIDENT HERBERT HOOVER. HT. (1930.) Sensation × Souv. de Claudius Pernet. Bud large, long-pointed; flower large, semi-double, full, lasting, moderately fragrant (spicy), medium orange, except for the two outside petals

which fade to a lighter shade, borne singly on long, strong stem. Foliage leathery, disease-resistant. Growth vigorous, upright; free bloomer. In fall when the days are cool this great new Rose is enhanced by splashes of red on the outer petals. Everyone wants Hoover. 2-yr., heavy plants, 45 cts. each, \$4.50 per doz., prepaid.

PRISCILLA. HT. Unnamed seedling × Ophelia. Bud very large, long-pointed; flower extremely large, double, full, cupped, unusually lasting, fragrant, outer petals rose-pink, center petals Tyrian pink, borne singly on long stem. Foliage large, glossy, disease-resistant. Growth vigorous, upright; abundant bloomer.

RAPTURE. HT. (1926.) Sport of Mme. Butterfly. Flower medium size, somewhat deeper pink than Mme. Butterfly, borne singly on long stem. Like parent in habit of growth but stronger.

REV. F. PAGE-ROBERTS. HT. Copper-red buds of great length, opening to golden yellow blooms stained outside with red, fully double and very large, fragrant. Strong, branching plant with healthy foliage. A supremely gorgeous Rose, developing to a surpassing magnificence of size and color.



Roslyn

Special prices for Roses in large quantities are quoted on page 2. These rates apply to quantities of one variety, or to an assortment of varieties. Rates do not apply to patented Roses listed on pages 20 and 21.



Charles K. Douglas



Mme. Nicolas Aussel



Killarney, Double White



American Beauty

ROSEMONT COLLECTION No. 5

TWELVE SELECTED ROSES Pictured in color on pps. 10 and 11

American Beauty. See p. 16.	Pres. Herbert Hoover. See p. 9.
Columbia. See p. 16.	Radiance. See p. 18.
Hadley. See p. 17.	Red Radiance. See p. 18.
Mme. Jules Bouche. See p. 18.	Sensation. See p. 18.
Mrs. Charles Bell. See p. 18.	Sunburst. See p. 18.
Ophelia. See p. 18.	Talisman. See p. 10.

OFFER. We will send one plant each (12 plants) of the Roses here pictured, 2-yr., heavy plants, prepaid, for only . . . \$3.95

This group contains Roses that are entirely dependable and of the highest value. It includes the Radiance family, which are still America's most popular Roses, Pres. Herbert Hoover, and Talisman.



Ophelia

ROSLYN. HT. (1929.) Souv. de Claudius Pernet × Buttercup. Resembles Souv. de Claudius Pernet in foliage but deeper in color. Medium-sized, long-pointed, deep orange bud; flower large, semi-double, very lasting, slightly fragrant, golden yellow. An excellent yellow Rose.

SOUV. DE CLAUDIUS PERNET. HT. Constance × unnamed variety. Bud large, long-pointed; flower very large, full, double, extremely lasting, moderately fragrant, pure sunflower-yellow, borne singly on good, long stem. This is one of the most beautiful of yellows. We have not always found it easy to grow. It loves a well-drained, sunny location.

SOUV. DE GEORGES PERNET. HT. The bud is very large, ovoid in form; flower extremely large, full, globular, Oriental red, shaded with yellow, ends of petals cochineal-carmine, borne on long, strong stem. Foliage dark bronzy green. Growth very vigorous, upright, and bushy.



Columbia



Hadley



Pres. Herbert Hoover

SOUV. DE H. A. VERSCHUREN. HT. (1922.) Unnamed Sunburst seedling × Golden Ophelia. Bud very long-pointed, opens well; flower very large, full, perfectly formed, fragrant, cadmium-yellow, passing to orange-yellow, borne singly on long stem. Foliage disease-resistant. Growth vigorous, bushy; profuse bloomer.

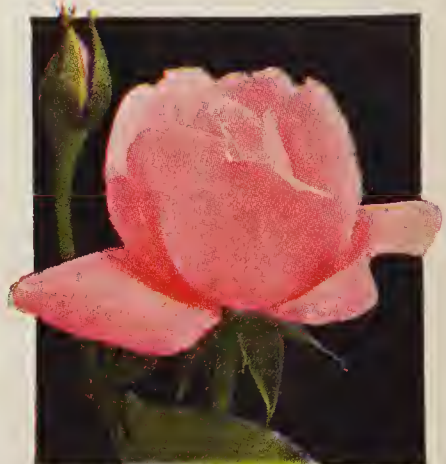
TALISMAN. HT. (1929.) Ophelia × Souv. de Claudius Pernet. Bud of medium size, long-pointed, richly colored; flower of medium size, double, high-centered, very lasting, extremely fragrant, golden yellow and copper, borne singly on long stem. Foliage abundant, large, rich green, leathery, mildews. Growth very vigorous, upright; free bloomer. This new Rose has attracted more attention than any variety introduced in many years. 2-yr., heavy plants, 45 cts. each, \$4.50 per doz., prepaid.



Mme. Jules Bouche

VILLE DE PARIS. HT. (1926.) Souv. de Claudius Pernet × unnamed Pernetiana seedling. Similar to Souv. de Claudius Pernet. Flower large, double, globular, full, sun-yellow, slightly tinted orange, deeper in center and at base, borne on long stem. Foliage reddish green, glossy.

WILHELM KORDES. HT. Gorgeous × Adolf Koschel. Unique and distinct in coloring—a rich coppery red with yellow suffusion overlaying a golden salmon ground, varying in intensity under different weather conditions. Always beautiful and particularly high-colored early in the season and in the autumn. The buds are long and pointed, opening to double, high-centered, very fragrant flowers. Good grower and free flowering.



Mrs. Charles Bell



Radiance

pink; flower very large, double, open, not very lasting, slightly fragrant, glistening coppery pink, suffused with yellow, petals very large, borne singly on long, strong stem. Foliage abundant, large, dark bronzy green, leathery, glossy, mildews. Growth vigorous (18 to 22 in.), upright; abundant, intermittent bloomer all season. (See color illustration on back cover.) 2-yr., heavy plants, 75 cts. each, \$7.50 per doz., prepaid.

IRISH ELEGANCE. See page 13.

IRISH FIREFLAME. See page 13.

K. OF K. See page 13.

MME. NICOLAS AUSSEL. HT. (1930.) Type, Mme. Henri Queuille; Mme. Edouard Herriot in color but darker. Bud very large, long-pointed; flower very large, double, full, extremely lasting, intensely fragrant, salmon shaded carmine and ochre, tinted yellow at base, borne singly on long, strong stem. Foliage abundant, large, dark green, disease-resistant. Growth very vigorous. (See color illustration, page 9.)

MRS. DUNLOP BEST. HT. Bud long-pointed, saffron-yellow with dull apricot shadings; flower large, double (28 petals), fragrant, reddish apricot, base coppery yellow, on strong stem. Foliage leathery, bronze-green, glossy, mildews slightly. Growth very vigorous, low, spreading; profuse bloomer. (See color illustration, page 8.) 2-yr., heavy plants, 75 cts. each, \$7.50 per doz., prepaid.

Newer 1935 Roses

Two or three of these varieties have been on the market for several years, but plants have been somewhat scarce, and as the varieties are extremely valuable it is perfectly safe to say that they are among the newer Roses. Experience has shown that they may be depended on to give abundant bloom, and to thrive under ordinary care. Color illustrations will be found on various pages in this Catalog; reference to such pages is made in the descriptive matter.

DOROTHY PAGE-ROBERTS.

HT. (1907.) Bud large, long-pointed, rich glowing

MRS. HENRY WINNETT.

HT. Mrs. Charles E. Russell × Mrs. George

Shawyer. Type, La France. Bud large, long-pointed; flower large, high-centered, double, very lasting, moderately fragrant, deep rich red, borne singly on long, strong stem. Foliage abundant, large, rich green, leathery, glossy. Growth very vigorous; free bloomer. (See color illustration, page 8.)



Red Radiance



Talisman

PETIT JEAN. HT. (1926.)

White Killarney × Sunburst. Type, Kaiserin Auguste Viktoria. Flower beautifully shaped, large, full, but opens well, deep orange-buff, shaded to yellow, each petal edged and bordered peach-pink, which sometimes is more pronounced. (See color illustration, page 8.)

SUNKIST. HT. (1932.) Sport of Joanna Hill. The long, beautifully shaped buds and full, open flowers have a predominating color of glorious deep orange-yellow with varying tints of copper, buff, and bronzy pink. These rich sunshiny tints naturally led to the name Sunkist, which is used by permission of the California Fruit Growers Exchange. The plants are tall and vigorous, with stiff, straight stems and large handsome foliage which completely covers the branches. Flowers are sweetly fragrant and keep in splendid condition for several days after cutting. (See color illustration, page 9.) 2-yr., heavy plants, 75 cts. each, \$7.50 per doz., prepaid.



Sensation

ROSEMONT ROSES

Are shipped into every State in the Union. We guarantee our 2-year-old plants to be true to the label name; to be delivered to you in first-class growing condition. However, as we have no control over the forces of nature, nor over the care that may be given in the garden, we cannot guarantee the plants to live.



Sunburst

SELECTED LIST OF STANDARD EVERB

Every plant has bloomed one year in the field. This group comprises the best of the well-known Roses and a few rather old ones loved by our grandmothers.

2-yr., heavy plants, 45 cts. each, \$4.50 per doz., prepaid

WE DO NOT PREPAY TRANSPORTATION CHARGES
ON ORDERS UNDER \$1.50

Alexander Hill Gray. T. Pale lemon-yellow, deepening in the center of its perfectly formed, fragrant flowers. Moderate growth and bloom. A good Rose.

American Beauty. HP. An old, well-known favorite. Large, vivid crimson flowers, each borne on a separate stem; fragrant.

Angelus. HT. Flower large, full, high-centered, lasting, fragrant, white with slight cream at center, borne singly on good, strong stem. Similar to Kaiserin Auguste Viktoria, but is larger and richer and lasts longer when cut.

Antoine Rivoire. HT. Rich creamy white, delicately tinted with pink—not just a faded pink, but a distinct blending of rich cream and delicate pink—one of the most delicate shades; extra-large petals, full and double. You will like it.

Betty. HT. Large blossoms, full and well shaped, coppery pink overspread with golden yellow; deliciously fragrant.

Columbia. HT. Bud large, long-pointed, deep pink; flower extra-large, full, double, very lasting, intensely fragrant, fresh, glistening rose-pink, borne singly on long, strong stem. Foliage medium size, dark green, disease-resistant. Growth very vigorous, upright; profuse, continuous bloomer.

Crusader. HT. Large, double, rich velvety crimson blooms on long stems. Robust; free flowering. One of the best.

Duchess of Wellington. HT. Long-pointed buds; blossoms intense saffron-yellow, flushed crimson, changing to lighter yellow.

Etoile de France. HT. A brilliant shade of clear velvety red-crimson centering to a vivid cerise. Large flowers on long, stiff stems. Bronze-green foliage.

Francis Scott Key. HT. One of the largest deep red Roses, shading to cerise; has a profusion of petals opening to a high center. Thrifty grower and easy to cultivate. Very thorny.

Frank W. Dunlop. HT. Bud very large, long-pointed; flower extremely large, full, high-centered, lasting, double, extremely fragrant, deep, bright rose-pink, borne singly on long, strong stem. Foliage leathery, glossy dark green, disease-resistant. Profuse bloomer.

Frau Karl Druschki (White American Beauty). HP. This Rose stands at the top of the Hybrid Perpetual Roses in America. Pure snow-white, long-pointed buds; large, full flowers. The bud sometimes has just a tinge of flesh as it begins to open, but develops into a pure white blossom.

General MacArthur. HT. A dark red Rose of good size, double, lasting, intensely fragrant, borne singly on average-length stem. Disease-resistant foliage.

General-Superior Arnold Janssen. HT. Glowing deep carmine, well filled and perfumed. Finely formed buds on perfect stems. Growth vigorous, compact; continuous bloomer.

Golden Ophelia. HT. Seedling from Ophelia. Bud and bloom medium size, golden yellow in center, paling slightly on outer petals, borne on long, strong stem.

ROSEMONT ROSES

have two outstanding points that commend them to experienced Rose-growers: First, they are of the very highest quality, 2-year, heavy, field-grown plants; and, second, they are most reasonably priced. In fact, better Roses cannot be obtained at any price. Our liberal guarantee, printed on page 2, indicates our confidence in the Rose plants we sell.



Mme. Jenny Gillemot



Laurent Carle



Crusader



Mrs. George Shawyer



Frau Karl Druschki



Angelus



Etoile de France



Luxembourg



Jonkheer J. L. Mock

COMING ROSES



Gen.-Sup. Arnold Janssen

ROSEMONT ROSES

are offered in many special collections. We suggest that you refer to pages 2, 6, 8, 10, 12, 15 and 17 for these special offers. Nearly a hundred different varieties are included in these groups, which are offered at attractive prices. You can readily induce your friends to join you in these price-saving purchases. Why not make up a club order?



Antoine Rivoire



Mme. Butterfly



Mme. Edouard Herriot



Francis Scott Key



Alexander Hill Gray



Kaiserin Auguste Viktoria

ROSEMONT COLLECTION NO. 8 EIGHTEEN SELECTED ROSES

PICTURED ON THESE PAGES

For full descriptions, see pages indicated

For gardeners who have high hopes and a limited purse, we have selected these varieties. While not the latest novelties, they are Roses that you can depend on for flowers and fragrance.

- Alexander Hill Gray. See page 16.
- Angelus. See page 16.
- Antoine Rivoire. Page 16.
- Crusader. See page 16.
- Etoile de France. See page 16.
- Francis Scott Key. See page 16.
- Frau Karl Druschki. See page 16.
- Gen.-Superior Arnold Janssen. See page 16.
- Jonkheer J. L. Mock. See below.
- Kaiserin Auguste Viktoria. See below.
- Lady Hillingdon. See page 18.
- Laurent Carle. See page 18.
- Luxembourg. See page 18.
- Mme. Butterfly. Page 18.
- Mme. Edouard Herriot. See page 18.
- Mrs. George Shawyer. See page 18.
- Mme. Jenny Gillemot. See page 18.
- Willowmere. See page 18.

OFFER NO. 1. We will send One plant each (18 plants) of these Roses, 2-yr., heavy plants, prepaid, for only **\$6.60**

OFFER NO. 2. We will send any Twelve of these Roses, your selection, prepaid for **\$4.40**

OFFER NO. 3. We will send any Six of these Roses, your selection, prepaid for **\$2.25**

Gruss an Teplitz. HT. Hardy over a wide range of territory; thrifty grower; incessant bloomer, producing a mass of vivid, dazzling, fiery crimson blooms; sweetly fragrant. Is especially fine in a mass planting, and is often used as a medium-high hedge.

Hadley. HT. Flower very large, well formed, double, full, intensely fragrant, rich crimson with deep velvety crimson shadings, borne singly on nice long stem.

Henry Nevard. HP. Flower very large, extremely double, full, unusually lasting, intensely fragrant, crimson-scarlet, borne singly on long stem. An excellent Hybrid Perpetual Rose.

Jonkheer J. L. Mock. HT. Clear pink, under side of petals rosy, almost silver-white. Very double blooms of magnificent size on long, erect canes. Free blooming.

Kaiserin Auguste Viktoria. HT. Queen of the white Roses. Pure white with never a tinge of pink. Splendid, large, pointed buds, opening to a superb, full, double blossom. Free bloomer.

Killarney. HT. Bud large, long-pointed; flower large, double, open, lasting, moderately fragrant, bright sparkling pink, borne singly on medium stem.

Killarney Brilliant. HT. Sport of Killarney. Bud medium size, long-pointed; flower medium size, open, double, lasting, strongly tea-perfumed; brilliant pink, almost crimson in bright weather, in dull or cloudy weather pure deep rosy carmine; borne singly on medium-long, strong stems. Many thorns.



Lady Hillingdon



Willowmere



Cecil

ROSEMONT COLLECTION NO. 6
EIGHT SELECTED IRISH ROSES

Pictured in color on pages 12 and 13

- | | |
|-------------------------|-------------------------------|
| Cecil. See below. | Irish Elegance. See page 13. |
| Cuba. See below. | Irish Fireflame. See page 13. |
| Dainty Bess. See below. | K. of K. See page 13. |
| Innocence. See page 13. | Lulu. See page 13. |

We will send 1 plant each (8 plants) of the
 Roses here pictured, 2-yr., heavy plants, **\$4.00**
 prepaid, for only

IRISH ROSES

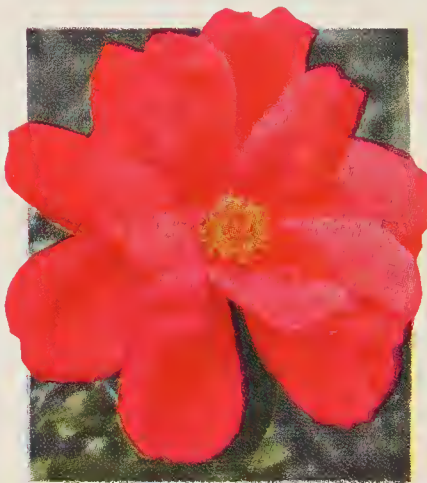
A class of Hybrid Tea Roses whose flowers are single or only partially double. While they are called "Irish Roses," it does not necessarily follow that they are of Irish origin. They were, however, largely brought to the market by Rose-growers of the Emerald Isle.

To many people the beauty of the bloom lies in the bud rather than in the open flower. A permanent characteristic is the profuse blooming habit. The plants are entirely hardy, growing well in the open sun, thus adding to their value in the Rose-garden. Likewise, they are desirable for cutting, as long sprays may be clipped for interior decorations. The culture of this group is exactly the same as that given to the usual class of Hybrid Tea Roses.

Cecil. HT. (1926.) Flowers very large, often 4 inches across, rich golden yellow. The blooms are single but are borne in large clusters on long stems, and are produced early and late over a considerable period of time. The plant is branching and bushy in habit, with mildew-proof foliage. 2-yr., heavy plants, 75 cts. each, \$7.50 per doz., prepaid.

Cuba. HT. (1926.) A very large, semi-double flower, cardinal-red with a slight yellow tinge. While it is very beautiful it fades quickly, yet withal we love this Rose for its coloring. It may be classed as a single flower yet it is very striking and beautiful. The plant is vigorous and upright in growth and with few thorns. 2-yr., heavy plants, 50 cts. each, \$5.00 per doz., prepaid.

Dainty Bess. HT. (1925.) A striking and distinct single, broad-petaled flower. The rose-colored blooms are borne in clusters and are distinguished by the large, flat group of stamens. 2-yr., heavy plants, 60 cts. each, \$6.00 per doz., prepaid.



Cuba



Innocence



Dainty Bess



Irish Fireflame

Irish Roses

Innocence. HT. (1921.) The flowers are single yet have two rows of petals, and are often 5 inches in diameter. The pure white petals surround a group of golden yellow stamens and the scentless blooms are borne in large clusters. The plant is a profuse bloomer, upright and vigorous in habit of growth, with dark green, mildew-proof foliage. 2-yr., heavy plants, 75 cts. each, \$7.50 per doz., prepaid.

Irish Elegance. HT. (1905.) In color this variety is bronzy orange-scarlet, assuming varied apricot hues as the bloom expands. Great quantities of single flowers are carried during the whole season. The plant is a strong and vigorous grower. 2-yr., heavy plants, 50 cts. each, \$5.00 per doz., prepaid.

Irish Fireflame. HT. (1914.) The medium-sized bud, spiral in form, is deep maddery rose splashed with crimson. It opens into a large, single flower which is 5 inches or more across, delicate orange or old-gold, veined with crimson and lemon. The blooms are fragrant but not very lasting and are carried on long, strong stems. Plant is hardy, of moderate height, yet compact and bushy. Foliage is a deep bronzy green and should be watched carefully for signs of mildew. The plant blooms freely until late autumn. 2-yr., heavy plants, 60 cts. each, \$6.00 per doz., prepaid.

K. of K. (Kitchener of Khartoum). HT. (1917.) The semi-double bloom, of a pure dazzling scarlet with a velvety sheen, is very lasting and extremely fragrant. The plant is vigorous and branching in habit and a profuse and continuous bloomer over the entire season. 2-yr., heavy plants, 75 cts. each, \$7.50 per doz., prepaid.

Lulu. HT. (1919.) Distinguished by a long-pointed, deep orange-red bud which opens into a large, single, salmon-pink bloom. The flowers are borne singly and also several in a group on long, strong stems. They have a slight fragrance and last for a considerable period after cutting. The plant is a continuous bloomer through the whole season and is a strong and compact grower. It will be a desirable Rose for your garden. 2-yr., heavy plants, 50 cts. each, \$5.00 per doz., prepaid.



Irish Elegance



Lulu

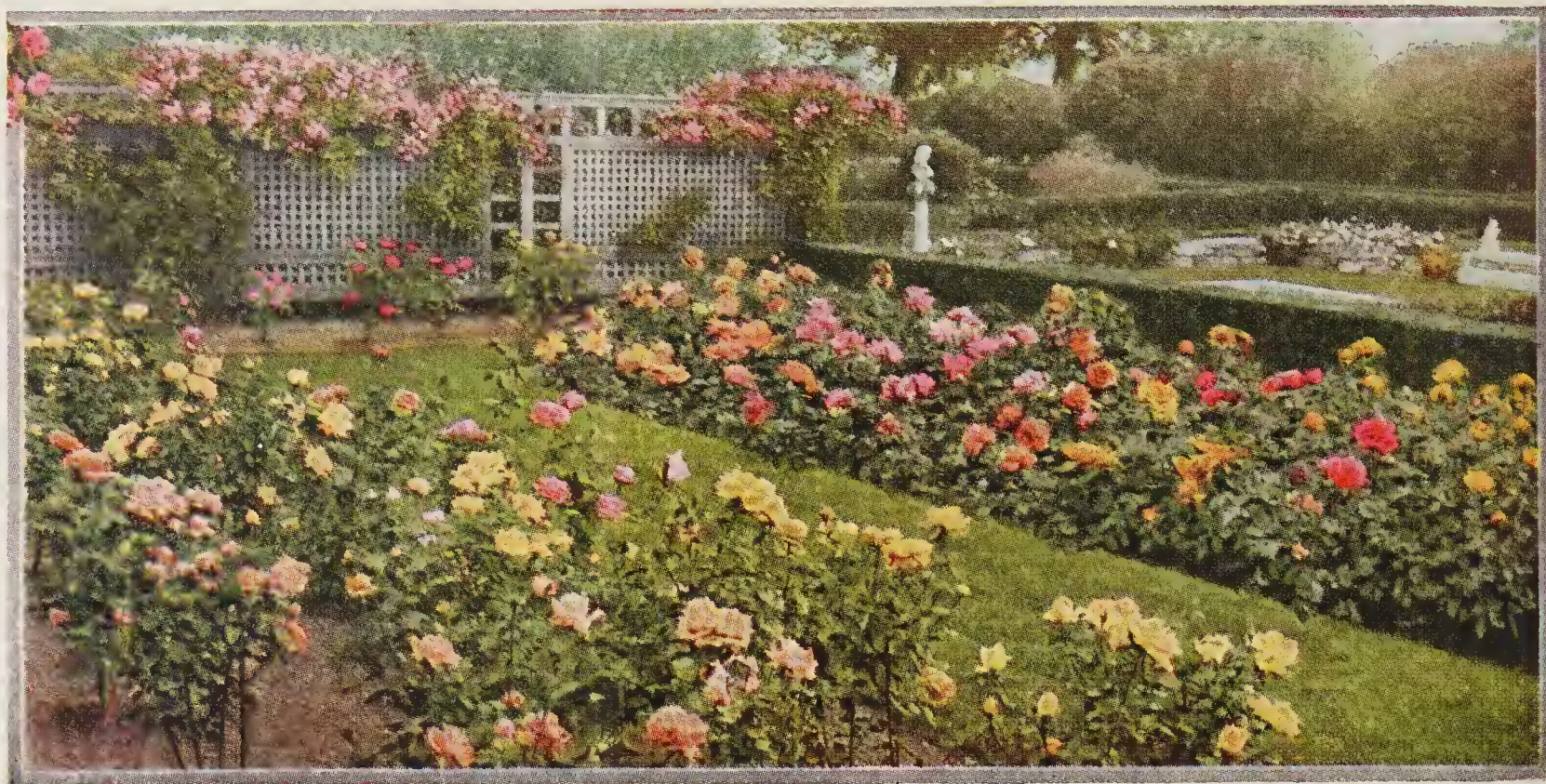
ROSEMONT SPECIALS

Your attention is invited to the special offers made on the front and back covers. Three splendid Roses are offered in each group. These are our standard 2-year-old heavy plants. You can buy no better anywhere at any price.

FRONT COVER COLLECTION	
Three Splendid Roses	\$1.60
BACK COVER COLLECTION	
Three Splendid Roses	\$1.75
BOTH COVER COLLECTIONS	
Six Splendid Roses	\$3.20



K. of K.



Old-Fashioned Garden Group

- Bridesmaid.** T. (1893.) Bud beautifully shaped; flower large, full, globular, imbricated, fragrant (Tea), clear pink, borne singly on long, strong stem. Foliage medium size, dark green, disease-resistant. Profuse, continuous bloomer. 2-yr., heavy plants, 60 cts. each, \$6.00 per doz., prepaid.
- Duchesse de Brabant.** T. (1857.) Flower large, double, well formed, very lasting, slightly fragrant, soft rosy pink, deepening to bright rose. Growth vigorous, healthy; free bloomer. 2-yr., heavy plants, 60 cts. each, \$6.00 per doz., prepaid.
- Harison's Yellow.** Spin. (1830.) One of the best of the old-time favorites. Golden yellow, semi-double blossoms come in great profusion about the middle of May and last for a long time. Blooms only once during a season but is a feast at this time. Prune by removing only weak canes. 2-yr., heavy plants, 45 cts. each, \$4.50 per doz., prepaid.
- Helen Gould.** HT. (1896.) An old favorite. Bud long-pointed, opens well; flower large, double, full, very fragrant, delicate pink in center, darker at edges, borne singly and several together on long, strong stem. Growth vigorous; free bloomer. 2-yr., heavy plants, 60 cts. each, \$6.00 per doz., prepaid.
- Hermosa.** C. (1840.) Bud medium size, long-pointed; flower medium size, double, full, high-centered, lasting, fragrant, light blush-pink, borne several together on average stem. Foliage medium size, peculiar bluish green. Growth vigorous; free bloomer all season. 2-yr., heavy plants, 60 cts. each, \$6.00 per doz., prepaid.
- La France.** HT. (1867.) Buds large, long-pointed; flower large, double, full, lasting, very fragrant, silvery pink, reverse bright pink, borne singly on average stem. 2-yr., heavy plants, 45 cts. each, \$4.50 per doz., prepaid.
- Maman Cochet.** T. Hardy, vigorous grower. Long-pointed buds; flowers of enormous size, very full, of great depth, rich coral-pink, shaded rosy crimson; broad, thick, shell-like petals. Good bloomer. 2-yr., heavy plants, 45 cts. each, \$4.50 per doz., prepaid.
- Maman Cochet, White.** T. Sport of Maman Cochet with creamy white flowers, having edges flushed rose. 2-yr., heavy plants, 45 cts. each, \$4.50 per doz., prepaid.
- Meteor.** Nois. (1887.) Bud medium size, ovoid; flower medium size, double, open, lasting, slightly fragrant, crimson-carmine, borne on short stem of average strength. Foliage small, soft, disease-resistant. Few thorns. Growth vigorous; moderate, continuous bloomer all season. Hardy. 2-yr., heavy plants, 45 cts. each, \$4.50 per doz., prepaid.
- Mrs. Arthur Robert Waddell.** HT. (1908.) Long-pointed, rosy scarlet bud; flower large, semi-double, open, not very lasting, slightly fragrant, reddish salmon, reverse rosy scarlet, fading lighter, borne singly on very good stem. Large, glossy, bronze-green foliage. 2-yr., heavy plants, 60 cts. each, \$6.00 per doz., prepaid.
- Mrs. B. R. Cant.** T. (1901.) This is the freest blooming Rose we offer; it is especially good in late summer and early fall. The bush is vigorous and free from disease. The pointed buds open into beautiful double flowers of dark red, fading into a most pleasing shade that everyone loves. 2-yr., heavy plants, 60 cts. each, \$6.00 per doz., prepaid.
- Persian Yellow** (*R. foetida persiana*). (1837.) A hardy, vigorous grower, covered in early spring with a profusion of small, yellow, semi-double flowers along the entire length of its arching canes. Beautiful in mass at blooming-time. 2-yr., heavy plants, 45 cts. each, \$4.50 per doz., prepaid.
- Paul Neyron.** HP. (1869.) Though an old variety, this has the distinction of producing the largest pink Rose in the world, very double and full, on a long, graceful stem. Color a clear pink, shaded to rose. Ranks second among the Hybrid Perpetual Roses, and blooms profusely about three times each season in our section. A half-dozen of these huge pompons make a nice basket. 2-yr., heavy plants, 45 cts. each, \$4.50 per doz., prepaid.
- Perle des Jardins.** T. (1874.) Flowers large, globular, very double, clear, rich yellow, richly perfumed. An old favorite. 2-yr., heavy plants, 45 cts. each, \$4.50 per doz., prepaid.
- Rosa Hugonis** (Father Hugo's Rose). Light yellow flowers, 1½ to 2½ inches across, borne profusely along the slender branches, making a striking display very early in the season. This Rose is very effective used as a specimen shrub or background. It grows to a height of 6 to 8 feet, making a very attractive, heavy, drooping clump. 2-yr., heavy plants, 45 cts. each, \$4.50 per doz., prepaid.
- Soleil d'Or.** HP. (1900.) A deep shade of yellow, shaded orange at times. Moderate bloomer on long canes; intensely fragrant. 2-yr., heavy plants, 35 cts. each, \$3.50 per doz., prepaid.
- William R. Smith.** T. (1908.) A choice Rose of its shade. Bud medium size, pointed; flower medium size, double, full, very lasting, pale pink at center and in shadows, outer petals creamy flesh tint—a rich blend of cream, pink, and citron. 2-yr., heavy plants, 50 cts. each, \$5.00 per doz., prepaid.

Rosemont Collection of Old-Fashioned Roses

Bridesmaid. See page 14. Hermosa. See page 14.
 Duchesse de Brabant. See page 14. Mrs. B. R. Cant. See page 14.
 Helen Gould. See page 14. Mrs. Arthur Robert Waddell. See page 14.

We will send One plant each (6 plants) of the Roses here listed, 2-yr., heavy plants, prepaid, for only **\$2.95**

Rosemont Collection of Old-Fashioned Roses

Harison's Yellow. See page 14. Paul Neyron. See page 14.
 La France. See page 14. Perle des Jardins. See page 14.
 Meteor. See page 14. Rosa Hugonis. See page 14.

We will send One plant each (6 plants) of the Roses here listed, 2-yr., heavy plants, prepaid, for only **\$2.15**

GRAND COMBINATION COLLECTION

We will send One plant each of the varieties listed in the two preceding offers (12 plants total), 2-yr., heavy plants, prepaid, for only **\$4.90**



Perle des Jardins

Rugosa and Miscellaneous Roses

This group is unusually hardy, enduring subzero weather without protection. The Rugosa and Hybrid Rugosa Roses are rugged growers known as "Shrub Roses." Very attractive in border or bed, and will thrive where more delicate Roses fail.

All Rugosa and Miscellaneous Roses, 45 cts. each, \$4.50 per doz., \$30.00 per 100, prepaid

Conrad F. Meyer. H.Rug. (1899.) Type, La France. Bud very large, ovoid; flower large, double, cupped, lasting, fragrant, clear silvery pink, borne in cluster on long, strong stem. Foliage abundant, large, rich green, leathery, black-spots, rusts. Growth very vigorous (5 to 10 ft.), upright, bushy; free, intermittent bloomer. Fine for hedges.

F. J. Grootendorst. H.Rug. (1918.) Type, Rugosa foliage, Polyantha flowers. Bud small, ovoid; flower small, open, double, very lasting, slightly fragrant, bright red, edges of petals serrated like a carnation, borne in cluster on average-length stem. Growth vigorous, bushy; blooms profusely.

Rosa Rugosa Alba. Large, single, fragrant, white flower. Continuous bloomer. Flower followed by large, conspicuous seed-hips. Foliage rough, dark green, and wrinkled. One of the hardiest Roses known, thriving in the cold of the North, and the heat of the South.

Sarah Van Fleet. H.Rug. (1926.) Bud large, ovoid; flower large, semi-double, open, cupped, moderately to intensely fragrant, lasting, wild-rose-pink, fading lighter in strong sunlight, borne singly and several together. Foliage leathery, disease-resistant. Growth compact (6 ft.); blooms abundantly in June and continues into autumn.



Rosa rugosa alba



F. J. Grootendorst

Standard Everblooming Roses

- Killarney, Double White.** HT. Killarney type. Bud large, long-pointed; flower large, double, and lasting, moderately fragrant, snow-white, borne singly on medium-strong stem.
- Killarney Queen.** HT. Sport of Killarney. Bud large, long-pointed; flower large, semi-double, lasting, moderately fragrant, Tyrian rose, brighter than Killarney.
- Killarney, White.** Same as Double White Killarney except that flower is not quite so double. An old, well-known favorite.
- Lady Ashtown.** HT. One of the best garden Roses. Blooms of a very pleasing carmine-pink, shading to golden yellow at base.
- Lady Hillingdon.** T. A leading yellow. Has a long, slender, pointed bud of clear deep golden yellow and is always an even, intense golden yellow. Very thrifty.
- Laurent Carle.** HT. Medium-sized bud; flower brilliant velvety carmine, large, double, full, open, lasting, fragrant.
- Los Angeles.** HT. A vigorous grower that produces flowers continually on long stems. Color a luminous flame-pink, toned coral, shaded gold at base of petals. Richly fragrant, and has long-pointed buds which open to mammoth blooms. Subject to black-spot, but may be protected from this trouble by formula given on page 2.
- Luxembourg, Grande Duchesse de.** HT. Long-pointed buds on graceful stems; flowers deep orange, much darker than Sunburst. Beautiful foliage. Strong, thrifty grower. One of the best and most beautiful deep yellow Roses we have grown.
- Mary, Countess of Ilchester.** HT. Unique in its warm crimson-carmine-pink—a color which will always catch the eye. Flowers of good size, deliciously scented. Free bloomer; upright stems.
- Miss Cynthia Forde.** HT. Flower full, large, double, extremely lasting, moderately fragrant, deep brilliant rose-pink, shading to a light rosy pink on back of petals, borne singly on long, strong stem. Foliage disease-resistant. Good grower.
- Mme. Butterfly.** HT. A harmony of bright pink, suffused with apricot and gold. The tight buds are a lovely shade of Indian red, yellow at the base. Unique in every way.
- Mme. Caroline Testout.** HT. Brilliant, satiny pink; immense broad petals and extremely large, double flowers; fragrant.
- Mme. Edouard Herriot.** HT. This famous Rose won the *London Daily Mail* Gold Cup at the International Horticultural Exhibit in London, England, 1912. The buds are coral-red, shaded yellow at the base; open flower of medium size, semi-double, a superb coral-red, shaded with yellow and bright rosy scarlet, passing to a shrimp-red.
- Mme. Jenny Gillemot.** HT. A brilliant saffron-yellow, opening canary, with dark golden shades. Buds long and pointed; blooms large with immense petals. Thorny. Good bloomer and grower.
- Mme. Jules Bouche.** HT. Bud medium size, long-pointed; flower medium size, double, full, very lasting, moderately fragrant, white, center shaded primrose or pale blush, borne singly on long, strong stem.
- Mrs. Aaron Ward.** HT. Bud medium size, long-pointed; flower double, high-centered, lasting, moderately fragrant, Indian yellow, occasionally splashed salmon, borne singly on stem of average length.
- Mrs. Charles Bell (Shell-Pink Radianee).** HT. A sport from Radianee. The color is a very pleasing, even shade of soft, clear shell-pink.
- Mrs. George Shawyer.** HT. Brilliant satiny pink; immense, broad petals; extremely large, double flowers, beautiful; very fragrant. A good bloomer even in dry weather.
- National Emblem.** HT. Bud medium size, ovoid; flower medium size, double, full, high-centered, lasting, moderately fragrant, dark crimson, overlaid velvety crimson, shading to vermilion toward edges, borne singly on long, strong stems.
- Ophelia.** HT. Bud medium size, long-pointed; flower medium size, double, very lasting, slightly fragrant, salmon-flesh, center shaded light yellow at base of petals. A favorite.
- Radianee.** HT. America's leading Hybrid Tea Rose, judging by the demand. Considered from every point, we think Radianee is our best pink Rose. Beautiful pointed buds of a clear, even shade of pink, opening into a tulip-shaped blossom on long, graceful stems. A strong, thrifty grower, free from disease, and an excellent bloomer.
- Red Radianee.** HT. A glowing crimson sport of Radianee. Stands second among the best twelve Roses of its class in America. You will want it with your collection.
- Rose Premier.** HT. Clear, deep rose-pink; very fragrant. Free grower; stiff, nearly thornless stems with handsome foliage.
- Sensation.** HT. Long-pointed buds; large, full blossoms of darkest velvety red with tinges and shadings of almost black. We consider this our most beautiful red Rose introduced in recent years.
- Sunburst.** HT. Another leading yellow Rose, golden orange at times varying with stage of development or weather conditions.
- Willowmere.** HT. Color a rich shrimp-pink, shaded yellow in center and toning to carmine-pink toward the edges of the petals. Long coral buds on good stems.

Climbing, Rambler, and Pillar Roses



American Pillar

Gardeners are realizing the value of Climbers more and more each year. They are beautiful on trellis, sprawled over a rock wall, or down an embankment. All varieties offered here are continuous bloomers, unless noted.

2-yr., heavy plants, 45 cts. each, \$4.50 per doz., prepaid, except where otherwise noted

TRANSPORTATION CHARGES ARE NOT PREPAID ON ORDERS AMOUNTING TO LESS THAN \$1.50

- American Pillar.** HW. Large, five-petaled, single Rose; rosy pink color, approaching brilliant carmine, with white center and golden yellow stamens. Borne in clusters that completely cover the plant for several weeks in spring. A vigorous and rank grower. Excellent foliage at all times.
- Belle Portugoise (Belle of Portugal).** H.Gig. Bud very long-pointed (sometimes 4 inches long); flower 4 to 6 inches across, semi-double, light flesh-pink, generally borne singly on stems often 2 feet long. Foliage glossy. Growth extremely vigorous; very profuse bloomer in early spring. Not hardy North. 75 cts. each, \$7.50 per doz., prepaid.
- Climbing American Beauty.** HW. A beautiful red like American Beauty bush Rose, with the addition of the climbing habit. A vigorous grower and free bloomer, producing heavily early in the season.
- Cl. Cecile Brunner.** Cl.Poly. Rosy pink on a rich creamy white ground, shaded light salmon. A profuse, continuous bloomer. 60 cts. each, \$6.00 per doz., prepaid.
- Cl. Columbia.** Cl.HT. A sport of Columbia and just like the parent except it is a vigorous climber. The flower is peach-blow-pink, deepening as it opens. A large Rose with long, stiff stems, nearly thornless and free from mildew.

Climbing, Rambler, and Pillar Roses



Paul's Scarlet Climber

Cl. Francis Scott Key. Sport of bush Francis Scott Key, and an unusually good climber. Imagine a climber having a profusion of large red blooms exactly like its parent, Francis Scott Key, and you have a picture of this lovely Rose.

Cl. Gruss an Teplitz. Cl.HT. A sport of Gruss an Teplitz, described on page 17. A perfect sheet of crimson—especially fine for a dazzling effect.

Cl. Kaiserin Auguste Viktoria. Cl.HT. The best pure white climber; shades at base of petals to a light cream; very fragrant.

Cl. Killarney. Cl.HT. Climbing sport of Killarney described on page 17.

Cl. Lady Ashtown. Cl.HT. Climbing sport of Lady Ashtown described on page 18.

Cl. Lady Hillingdon. Cl.T. This climber is as popular as its parent described on page 18. Deep yellow with orange shading, good-sized bloom; long-pointed bud.



Marechal Niel

Cl. Maman Cochet. Cl.T. A good pink climber identical with the bush variety described on page 14.

Cl. Meteor. Cl.HT. Intense velvety crimson; large buds; blooms double and borne on good stems.

Cl. Mrs. Charles Bell (Cl. Shell-Pink Radianee). Cl.HT. Vigorous climbing sport of Mrs. Charles Bell described on page 18. 50 cts. each, \$5.00 per doz., prepaid.

Cl. Ophelia. Cl.HT. Brilliant salmon-flesh, shaded rose on outer edges of petals; heart glowing peach-pink and orange, yellow blendings, passing finally to lighter shades; fragrant.

Cl. President Hoover. Cl.HT. Vigorous, climbing sport of President Hoover with same flower. 50 cts. each, \$5.00 per doz., prepaid.

Cl. Radianee. Cl.HT. Climbing sport of Radianee described on page 18. 50 cts. each, \$5.00 per doz., prepaid.

Cl. Red Radianee. Cl.HT. Vigorous, climbing sport of Red Radianee described on page 18. 50 cts. each, \$5.00 per doz., prepaid.

Cl. Rev. F. Page-Roberts. Cl.HT. Climbing sport of Rev. F. Page-Roberts described on page 19. 50 cts. each, \$5.00 per doz., prepaid.

Cl. Souv. of Wootton. Cl.HT. Climbing sport of Souv. of Wootton. Very large, double, rich velvety red blooms.

Cl. Souv. de la Malmaison. Cl.Bour. Climbing sport of Souv. de la Malmaison. Bud and flower large, extremely double, full, fragrant; creamy flesh with rose center, elegantly shaded. Growth vigorous; free but erratic bloomer. 60 cts. each, \$6.00 per doz., prepaid.

Cl. Sunburst. Cl.HT. Orange-copper, golden orange, and golden yellow at different stages of development. All intense shades. A giant Rose with long stems and long-pointed buds.

Cl. Sunny South. Cl.HT. Sport of Sunny South. Bud medium size, ovoid; flower large, semi-double, cupped, moderately fragrant, pink flushed carmine on a yellow base. Foliage rich green, disease-resistant. 60 cts. each, \$6.00 per doz., prepaid.

Cl. Talisman. Cl.HT. Climbing sport of Talisman described on page 10. 50 cts. each, \$5.00 per doz., prepaid.

Cl. White Maman Cochet. Cl.T. Climbing sport of White Maman Cochet described on page 14.

Countess Mary. Cl.HT. Climbing sport of the popular Rose, Mary, Countess of Hehester. Large, double, fragrant, full, cupped blooms of deep pink, in clusters. Strong, healthy growth; long, rigid canes. 60 cts. each, \$6.00 per doz., prepaid.

Flying Colours. H.Gig. Flower large, single, light red, borne singly and several together on medium-length stem; slightly fragrant. Foliage medium size, light green, disease-resistant. Blooms in spring only. 75 cts. each, \$7.50 per doz., prepaid.

Kitty Kininmonth. H.Gig. Bud large, globular; flower very large, semi-double, cupped, slightly fragrant, glowing deep pink—almost fadeless—with many golden stamens, borne on medium-length stem. 75 cts. each, \$7.50 per doz., prepaid.

Marechal Niel. Nois. An old favorite which still holds its prestige in competition with the many fine new ones. Vigorous climber. 60 cts. each, \$6.00 per doz., prepaid.

Mme. Gregoire Staechelin (Spanish Beauty). Cl.HT. (1927.) Bud long-pointed; flower very large, moderately fragrant, delicate pink, with attractively curled petals, borne on long, strong stem. Foliage large, disease-resistant. Growth vigorous; abundant bloomer in June. 50 cts. each, \$5.00 per doz., prepaid.

Paul's Scarlet Climber. HW. Flower medium size, semi-double, vivid scarlet, shaded bright crimson; color is retained without burning or fading till the petals fall; borne in large cluster.

Reine Marie Henriette. Cl.T. A grand pillar Rose in the South. Flowers full and well formed, rich brilliant crimson.

Scorecher. Cl.HT. Large, semi-double brilliant scarlet-crimson flower; fragrant. 50 cts. each, \$5.00 per doz., prepaid.

Silver Moon. HW. Large, semi-double, clear silvery white flowers, having a great tuft of yellow stamens in center. Literally covered with blossoms for a long time in spring.

Sunday Best. Cl.HT. Bud medium size, long-pointed; flower medium size, single, slightly fragrant, brilliant red with white center, borne in cluster. Foliage light green, disease-resistant; profuse bloomer. 50 cts. each, \$5.00 per doz., prepaid.

CHEROKEE ROSES

2-yr., heavy plants, 60 cts. each, \$6.00 per doz., prepaid

Anemonenrose (Pink Cherokee; Anemone Rose). Flower single, shining silvery rose-pink. Growth vigorous; free bloomer for three to four weeks and scattering afterward. Excellent.

Ramona (Red Cherokee). (1913.) Carmine-crimson flowers.

Rosa laevigata (White Cherokee). Fragrant, pure white flowers 2½ to 3½ inches across, borne singly in early summer. Naturalized in the South; not hardy in the North.

White Banksia. A true southern climbing Rose blooming in May and June. Flowers about an inch across, in clusters.

Yellow Banksia, Lady Banks. A companion to White Banksia. Neither variety is hardy in the North.

PATENTED ROSES

Three or more Patented Roses, all of one variety, or assorted, may be purchased at the dozen rate

BLAZE H.CI.

(Jackson & Perkins Co., 1932.) U. S. Plant Patent No. 10

Paul's Searlet Climber × Gruss an Teplitz. Blaze is one of the best of the Patented Roses. In it we have the outstanding "different red" of Paul's Searlet combined with the blooming habit of Gruss an Teplitz—an intermittent Paul's Searlet. Vigorous climber which may be used as a pillar or shrub Rose. 2-yr., heavy plants, \$1.25 each, \$12.50 per doz., prepaid.



©1934

Better
Times.
Plant
Patent
No. 23

BETTER TIMES HT.

(Jos. H. Hill Co., 1934.) U. S. Plant Patent No. 23

Sport of Briareliff. Large, long-pointed buds; very large flower, double, high-centered, extremely lasting, delicately fragrant, color bright cerise. Vigorous, upright grower, having abundant dark green, leathery foliage. 2-yr., heavy plants, \$1.50 each, \$15.00 per doz., prepaid.



©1934

Token. Plant Patent No. 95

TOKEN HT.

U. S. Plant Patent No. 95

Large, apricot, Ophelia-shaped bud. The medium-full flowers are a unique color—the glowing tone of a rich, sun-ripened apricot without any shading, gradually finishing soft coral—pleasing at all stages. 2-yr., heavy plants, \$1.50 each, \$15.00 per doz., prepaid.

TEXAS CENTENNIAL HT.

(Dixie Rose Nurseries, 1935.) U. S. Plant Patent applied for

A sport of President Herbert Hoover. Bud is long-pointed, opening into a large, moderately fragrant flower carried on a long, strong stem. The color of the open flower is brick-red, with a dainty shade of gold; the center of the flower is a lighter red, toning to dark pink as the bloom ages. 2-yr., heavy plants, \$1 each, \$10.00 per doz., prepaid.



Texas Centennial



©1932

Souvenir.
Plant
Patent
No. 25

SOUVENIR HT.

(A. N. Pierson, Inc., 1930.) U. S. Plant Patent No. 25

A sport of the famous Talisman Rose. The color is a beautiful shade of yellow suffused at times with a slight flush of pink, which adds to the attractiveness of the bloom. Plant is a strong grower and produces great quantities of blooms which are carried on strong, stiff stems. During the few years since its introduction it has become one of the most popular yellow Roses in the American trade. 2-yr., heavy plants, \$1.00 each, \$10.00 per doz., prepaid.

PATENTED ROSES

Three or more Patented Roses, all of one variety, or assorted, may be purchased at the dozen rate

MARY HART HT.

(G. B. Hart; registered with American Rose Society, 1931.)
U. S. Plant Patent No. 8

Sport of Talisman and very similar except the flower is a maroon-red. Bud long-pointed; flower double, open, lasting, intensely fragrant, on nice long stems with good foliage. A red Talisman. 2-yr., heavy plants, \$1.00 each, \$10.00 per doz., prepaid.

NIGRETTE HT.

(M. Krause; intro. in U. S. by Conard-Pyle, Co., 1934.)
U. S. Plant Patent No. 87

Chateau de Clos Vougeot × Lord Castlereagh. Bud ovoid; flower double, open, lasting, intensely fragrant, blackish violet-crimson. Bushy; abundant, continuous bloomer. The nearest "Black Rose" grown. 2-yr., heavy plants, \$2.00 each, \$20.00 per doz., prepaid.



©1932 Mary Hart. Plant Patent No. 8



©1932 Countess Vandal. Plant Patent No. 38

COUNTESS VANDAL HT.

(M. Leenders & Co.; intro. in U. S. by Jackson & Perkins Co., 1932) U. S. Plant Patent No. 38

(Ophelia × Mrs. Aaron Ward) × Souv. de Claudius Pernet. An outstanding Rose. Very large, long-pointed bud of coppery salmon-pink, suffused orange; flower large, double, high-centered, very lasting, fragrant, brilliant pink with salmon and yellow blend, borne singly on long stem. Large, dark green foliage of leathery texture. 2-yr., heavy plants, \$1.00 each, \$10.00 per doz., prepaid.



Chatillon Rose



Cecile Brunner (Sweetheart)



Else Poulsen

Rosemont's Select List of Everblooming Polyantha Roses

The Polyantha Roses are bushy, dwarf, low-growing plants, often called Baby Roses, and bear clusters of very dainty little blossoms. These Rose plants make unusually attractive beds and borders.

All Everblooming Polyantha Roses, 2-yr., heavy plants, 45 cts. each, \$4.50 per doz., prepaid

WE DO NOT PREPAY TRANSPORTATION CHARGES ON ORDERS UNDER \$1.50

Cecile Brunner (Sweetheart Rose). Rated as the leading dwarf Rose of America. It has exquisite sprays of rich, rosy pink, baby buds, opening into lovely, perfectly double, miniature flowers of seashell-pink. Intensely fragrant and the idol of all who know it.

Chatillon Rose. One of the best dwarf Roses. It blooms profusely during the entire season, bearing trusses of very large, slightly fragrant, bright pink flowers.

Eblouissant. Medium-sized, ovoid bud; flower medium size, very double, globular, extremely lasting, slightly fragrant, dazzling red, borne in good cluster on medium-length stem. Abundant, bronzy green, glossy foliage.

Ellen Poulsen. Bud and flower large, full, double, very lasting, moderately fragrant, bright cherry-pink, borne in cluster on medium-length strong stem. Foliage of medium size, glossy dark green. Growth vigorous, dwarf; abundant, continuous bloomer.

Else Poulsen. Medium-sized, ovoid bud; medium-sized, semi-double, open flower, very lasting, slightly fragrant, bright rose-pink, borne in cluster on good stem. Foliage glossy, dark green, disease-resistant.

Gloria Mundi. Sport of Superba. Flowers large for the class, fully double, very lasting, orange-scarlet, borne in clusters. Foliage abundant, medium size, light green, glossy. Bushy, upright, vigorous grower for its class. This is the prettiest "Baby Rose" we have grown. It has won many first-class certificates and medals in many flower shows.

Kirsten Poulsen. Bud medium size, ovoid; flower medium size, single, open, very lasting, slightly fragrant, bright scarlet, borne in cluster on long stem. Foliage abundant, medium size, light green, leathery. Growth vigorous, bushy; profuse, continuous bloomer all season. Hardy.



Golden Salmon



Eblouissant

Polyantha Roses



Gloria Mundi

George Elger. A superb "Baby Rose" with sufficient Tea blood to make it different. It produces great quantities of lovely little golden yellow buds, opening into miniature, symmetrical Roses. The plant is so loaded with blooms that it resembles a large bouquet.

Golden Salmon. This is truly a "different" Rose. It bears large trusses of miniature blossoms of a salmon-orange shade that does not fade. Unique.

Gruss an Aachen. Bud salmon; flower very large for its class, extremely double, full, lasting, slightly fragrant, orange-salmon at center, passing to white at

edges, borne several together on short, strong stem. Very dwarf; free.

Ideal. Sport of Miss Edith Cavell. Dark velvety crimson trusses of small, double, slightly fragrant blooms. Very lasting—makes a dazzling show.

Katharina Zeimet. The white "Baby Rose." Pure white miniature blossoms in abundance; fragrance similar to hyacinths. Good grower.

Lafayette (originally Joseph Guy). Medium-sized, pointed bud; large flower for its class, semi-double, cupped, lasting, bright cherry-crimson, in immense clusters on strong stems.

Miss Edith Cavell. Sport of Orleans Rose. This is our best dark red "Baby Rose." Large trusses of scarlet-crimson blossoms which hold their color well. Foliage leathery, disease-resistant.

Orleans Rose (Red Baby Rambler). A showy "Baby Rose" of dwarf, compact habit. This charming variety is a huge bouquet of small, double, red Roses from early spring until killing frost. Planted in a mass or as a hedge, it is the admiration of all.

Tip-Top (Baby Doll). A new variety of the "Baby Rose" family. One of the most beautiful and unique of the group. It grows about 18 inches high and is literally covered with exquisite miniature blooms from early spring until freezing weather. The tips of the petals show a vivid crimson, mellowing down into shades of pink, saffron, lavender, gold, and finally at the base of the petals it is deep old-gold.



Orleans Rose (Red Baby Rambler)

Triomphe Orleanais.

Flower large for a Polyantha, semi-double, open, very lasting, open, very lasting, cherry-red, borne in large clusters on strong stems. Vigorous, bushy grower.

Rosa Rouletti

Miniature Rose. A darling little gem growing very thick and bushy, about 6 inches tall; tiny, rose-pink flowers, very double, less than one inch across. Popular as an edging plant around Rose-beds and in rock-gardens. Price, 3-inch pot-plants, 75 cts. each, prepaid.



Gruss an Aachen



Lafayette



Ideal

"SOUTHERN BEAUTIES" ROSES

FROM

ROSEMONT NURSERIES

A. L. THOMPSON, Owner

Box 839

TYLER, TEXAS

ETOILE DE HOLLANDE

Generally considered one of the best red Roses. The color is well shown by the illustration. The blooms are moderately double and are most attractive when half open. 2-yr., heavy plants, 60 cts. each, \$6.00 per doz., prepaid.

EDITH NELLIE PERKINS

This Rose has become extremely popular since its introduction in 1928. The color is a happy blending of Oriental red, cerise-orange, and salmon-pink flushed with orange. 2-yr., heavy plants, 60 cts. each, \$6.00 per doz., prepaid.



ETOILE DE HOLLANDE

60 cts. each, \$6.00 per doz.



EDITH NELLIE PERKINS

60 cts. each, \$6.00 per doz.

DOROTHY PAGE-ROBERTS

The large bud opens into an extra-large bloom, which is slightly fragrant. On first opening the color is a glowing pink but changes to coppery pink with yellow suffusions. 2-yr., heavy plants, 75 cts. each, \$7.50 per doz., prepaid.



DOROTHY PAGE-ROBERTS

75 cts. each, \$7.50 per doz.

Back Cover Collection No. 1

We will furnish one plant each of the 3 Roses pictured on this page for . . . **\$1.75** Prepaid

These are our usual standard, heavy, 2-yr. plants

Back Cover Collection No. 2

We will furnish 2 plants each of the 3 Roses pictured on this page for . . . **\$3.20** Prepaid

These are our usual standard, heavy, 2-yr. plants

GRAND COMBINATION COLLECTIONS

One each of the 3 varieties shown on the front cover and the 3 varieties shown on the back cover (6 plants) in our usual 2-yr., heavy specimens for . . . **\$3.20** Prepaid

Two plants each of these varieties (12 plants) in our usual 2-yr., heavy specimens for . . . **\$6.20** Prepaid