

Tools for linking Wikidata and OpenStreetMap

Edward Betts
November 12th 2022



WIKICONFERENCE
NORTH AMERICA



MAPPING USA
OPENSTREETMAP US

Why add links between OSM and Wikidata?

- OpenStreetMap has detailed geometry
- Wikidata has more labels, images and identifiers
- Linked Open Data (LOD)



WIKICONFERENCE
NORTH AMERICA



MAPPING USA
OPENSTREETMAP US



Photo by Edward Betts // CC 0



WIKICONFERENCE
NORTH AMERICA



MAPPING USA
OPENSTREETMAP US

OWL Places

osm.wikidata.link

Web interface for linking places
in OSM to Wikidata

OSM ↔ Wikidata matcher

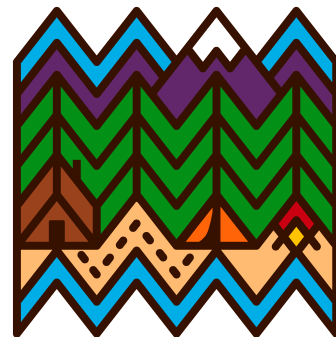
Two great projects cataloguing the world, even more powerful when linked together.

Search for a place, pick one and leave the matcher to run for a few minutes. Then check out the list of matches.

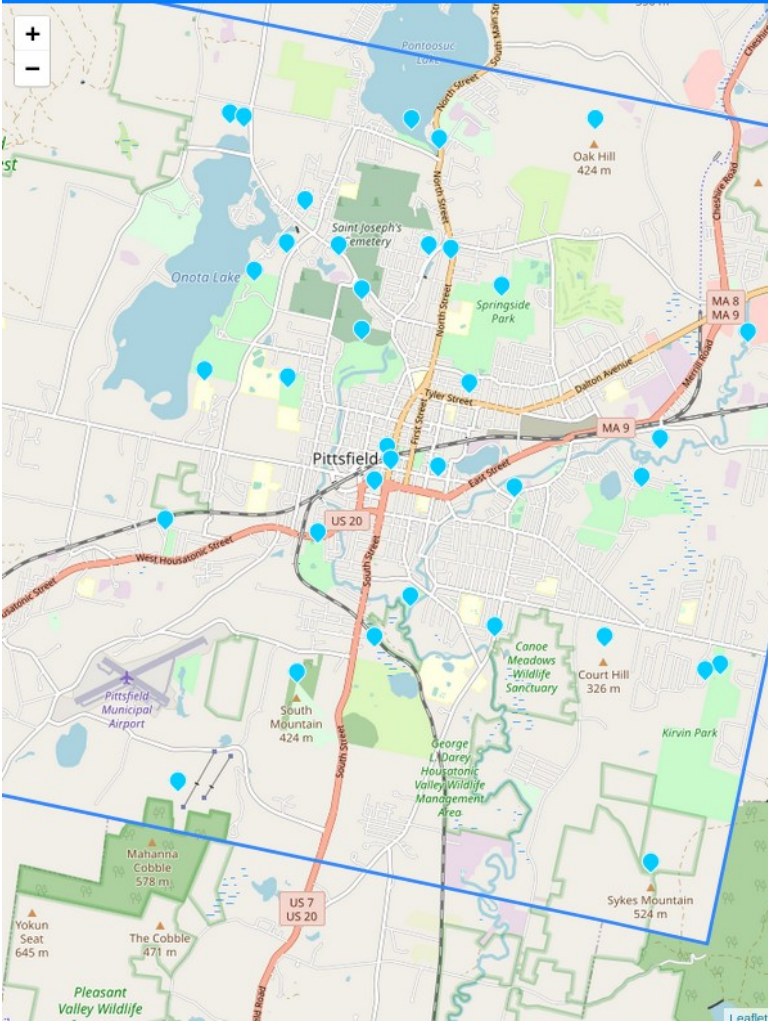


**WIKICONFERENCE
NORTH AMERICA**

osm.wikidata.link



**MAPPING USA
OPENSTREETMAP US**



Pittsfield, Berkshire County, Massachusetts, United States
category: boundary – type: administrative – OSM: [relation 1839563](#)

Latest matcher run: Tue, 08 Nov 2022 21:37

Please **check each match carefully** before uploading to OpenStreetMap.
If in doubt, **contact the local mapping community** before adding Wikidata tags.

Match candidates [Already tagged](#) [No match](#)

39 candidates found

[Run matcher again](#)

Type filter

- park (Q22698): **11 matches** – *area of open space used for recreation or conservation*
 - green space (Q22652): **11 matches** – *green area planned in an urban location*
 - public space (Q294440): **11 matches** – *places for public use*
 - natural watercourse (Q55659167): **7 matches** – *river or stream of any size*
 - watercourse (Q355304): **7 matches** – *channel that a flowing body of water follows*
- show: [more](#) / [all](#) (another 10 available)

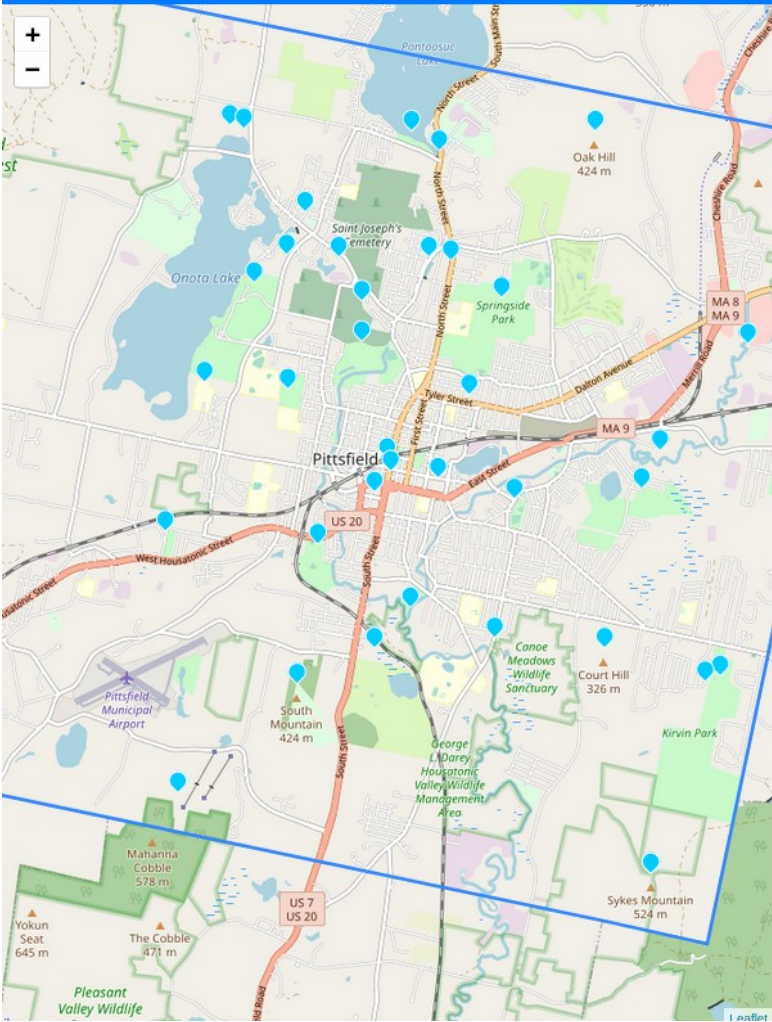
Drag to adjust language order preference.

English (103 Wikidata labels / 1 OSM objects)

Español / Spanish (14 Wikidata labels / no OSM objects) [\[move to top\]](#)

By default all likely matches are checked. If you prefer you can [uncheck all](#) and tick items as you check them. [Show all tags](#) to see more detail for candidate matches.

× **Burbank Park (Q49476192)** – park in Berkshire County, Massachusetts, United States



✓ Charles Whittlesey Power House (Q5083511) – historic house in Massachusetts, United States

item type: [house](#) [show on map](#) [Wikidata](#)

Summary from [English Wikipedia \(enwiki\)](#)

The **Charles Whittlesey Power House** is a historic house located at 575 South Street in Pittsfield, Massachusetts. Built about 1912, this Tudor Revival house and its landscaped setting are a rare local example of the country house style propounded by the English architect Edwin Lutyens. The house was built for Charles Whittlesey Power, a local businessman who also served one term as mayor of Pittsfield. It was listed on the National Register of Historic Places on August 8, 1997.

NRHP reference number: **97000820**

Matches from OpenStreetMap

[575 South Street \(way\)](#) [\[OSM\]](#)

909 feet from Wikidata [address match](#)

[toggle OSM tags](#)



✓ Providence Court (Q7252412) – historic former hospital building at 379 East Street in Pittsfield, Massachusetts

item type: [construction](#) [show on map](#) [Wikidata](#)

Summary from [English Wikipedia \(enwiki\)](#)

Providence Court, previously **St. Luke's Hospital**, is a historic former hospital building at 379 East Street in Pittsfield, Massachusetts. The Colonial Revival building was constructed in 1926, and was the first Roman Catholic hospital in Berkshire County. St. Luke's merged with Pittsfield General Hospital in 1967 to form Berkshire Medical





✓ Providence Court (Q7252412) – historic former hospital building at 379 East Street in Pittsfield, Massachusetts

item type: [construction](#) [show on map](#) [Wikidata](#)

Summary from [English Wikipedia \(enwiki\)](#)

Providence Court, previously **St. Luke's Hospital**, is a historic former hospital building at 379 East Street in Pittsfield, Massachusetts. The Colonial Revival building was constructed in 1926, and was the first Roman Catholic hospital in Berkshire County. St. Luke's merged with Pittsfield General Hospital in 1967 to form Berkshire Medical Center, in the nation's first mergers between religious and non-sectarian hospitals. The building was converted into elderly housing in 1978–1981. It was listed on the National Register of Historic Places in 1987.

NRHP reference number: **87001107**

Matches from OpenStreetMap

[379 East Street \(way\)](#) [\[OSM\]](#)

94 feet from Wikidata [address match](#)

[toggle OSM tags](#)



✓ Canoe Meadows Wildlife Sanctuary (Q17490645) – Protected Landscape in Massachusetts

item type: [protected area](#) [show on map](#) [Wikidata](#)

website: <http://www.massaudubon.org/get-outdoors/wildlife-sanctuaries/canoe-meadows>

USGS GNIS ID: **606016**

- Main page
- Community portal
- Project chat
- Create a new Item
- Recent changes
- Random Item
- Query Service
- Nearby
- Help
- Donate

Switch to old look

Lexicographical data

- Create a new Lexeme
- Recent changes
- Random Lexeme

Tools

- What links here
- Related changes
- Special pages
- Permanent link
- Page information
- Concept URI
- Cite this page
- Automatic addition

In Wikipedia

Providence Court (Q7252412)

Item [Discussion](#)

[Read](#) [View history](#) [☆](#) [⇄](#) [More](#) ▼

historic former hospital building at 379 East Street in Pittsfield, Massachusetts
 St. Luke's Hospital

[edit](#)

▼ In more languages

[Configure](#)

Language	Label	Description	Also known as
English	Providence Court	historic former hospital building at 379 East Street in Pittsfield, Massachusetts	St. Luke's Hospital


Statements

instance of 🗨️ [human-made geographic feature](#) [edit](#)

▼ 0 references [+ add reference](#)

[+ add value](#)

image 🗨️ [edit](#)



[Providence Court, Pittsfield MA.jpg](#)
 3.072 × 2.304 · 2.16 MB



Search Where is this? [Go](#) [+](#)

Way: 215695954 ✕

Version #2

Mass GIS Address Import Phase 2, BMP data

Edited over 2 years ago by [Alan_Bragg_Import](#)
 Changeset #81935903

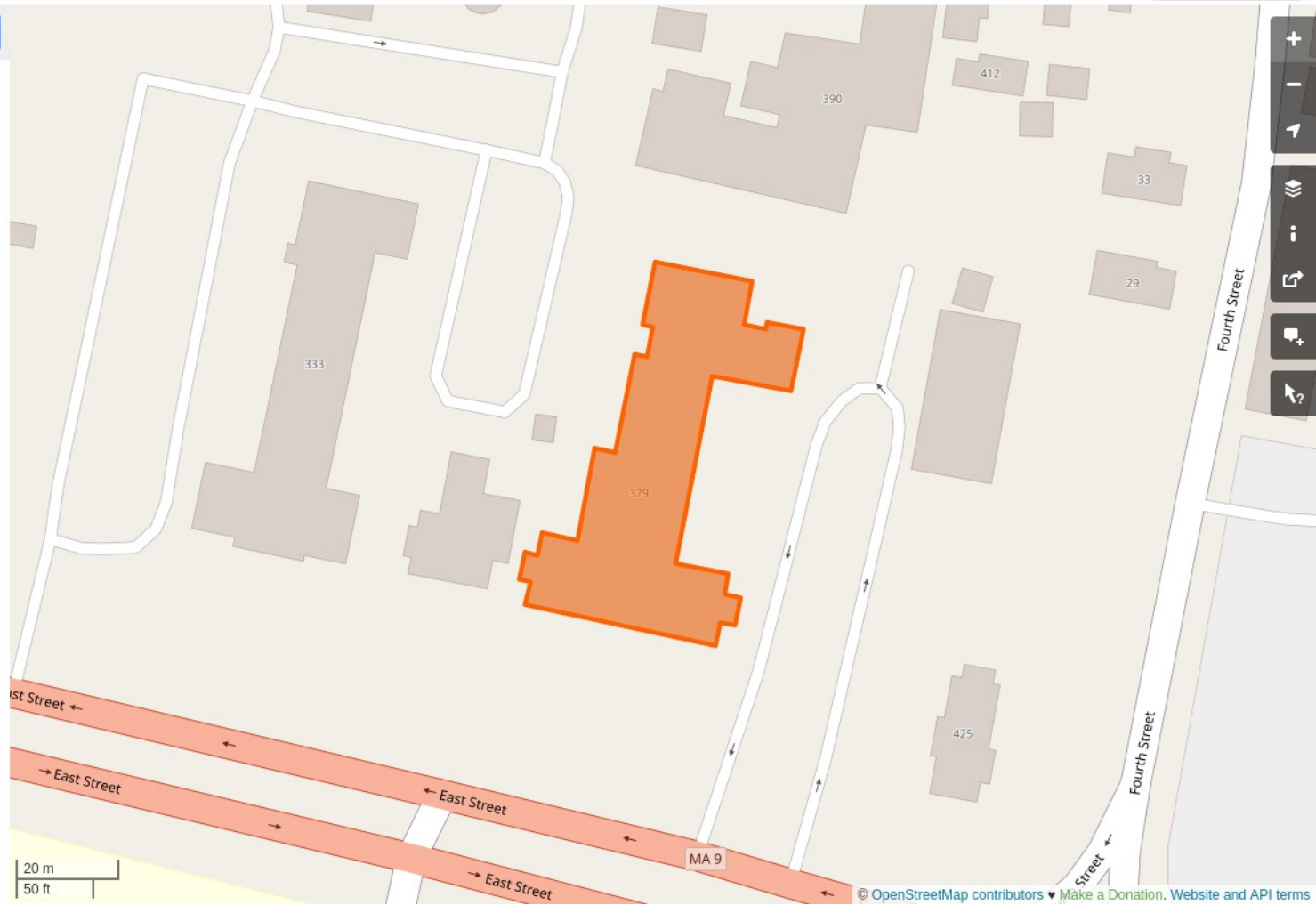
Tags

addr:housenumber	379
addr:street	East Street
building	yes

Nodes

▶ 29 nodes

[Download XML](#) · [View History](#)





- [Main page](#)
- [Contents](#)
- [Current events](#)
- [Random article](#)
- [About Wikipedia](#)
- [Contact us](#)
- [Donate](#)

Switch to old look

Contribute

- [Help](#)
- [Learn to edit](#)
- [Community portal](#)
- [Recent changes](#)
- [Upload file](#)

Tools

- [What links here](#)
- [Related changes](#)
- [Special pages](#)
- [Permanent link](#)
- [Page information](#)
- [Cite this page](#)
- [Wikidata item](#)
- [Add to the New Pages Feed](#)
- [Add interlanguage links](#)

Print/export

- [Download as PDF](#)
- [Printable version](#)

Languages

Providence Court

[Article](#) [Talk](#)

From Wikipedia, the free encyclopedia

Providence Court, previously **St. Luke's Hospital**, is a historic former hospital building at 379 East Street in [Pittsfield, Massachusetts](#). The [Colonial Revival](#) building was constructed in 1926, and was the first Roman Catholic hospital in [Berkshire County](#). St. Luke's merged with Pittsfield General Hospital in 1967 to form [Berkshire Medical Center](#), in the nation's first mergers between religious and non-sectarian hospitals. The building was converted into elderly housing in 1978–1981. It was listed on the [National Register of Historic Places](#) in 1987.^[1]

Description and history [[edit](#)]

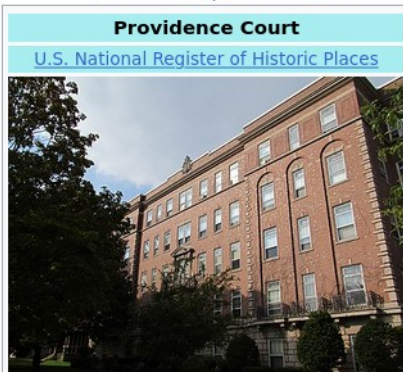
Providence Court is located on the north side of East Street ([Massachusetts Route 9](#)), several blocks east of Pittsfield's central business district. It is a five-story brick and stone structure, in a T shape with a horizontal block at the front and a long projecting wing to the rear of the center. It is basically Colonial/Georgian Revival in character, with limestone trim that includes corner quoining, window sills and keystones, and belt courses. The ground floor, essentially a raised basement, is finished in rusticated limestone, while the upper floors are predominantly in brick. The main entrance, set between the first and second levels, is sheltered by a limestone portico with Tuscan columns.^[2]

The Roman Catholic Diocese of [Springfield](#) decided in 1916 to establish a hospital in Pittsfield, and dedicated a facility in two converted residences the following year. This space proving inadequate, the diocese purchased the Allen estate on East Street, and converted [the estate house](#) into a maternity ward. The present building was constructed on the grounds of the former Allen estate between 1923 and 1926, to design by ecclesiastical architect [John W. Donohue](#) of Springfield. It was operated as St. Luke's Hospital until 1967, when it was merged with Pittsfield General Hospital to form what is now known as [Berkshire](#)

🌟 [Add languages](#) ▾

[Read](#) [Edit](#) [View history](#) 🌟 [More](#) ▾

Coordinates: 📍 [42°26′51″N 73°14′47″W](#)



Providence Court



- Show map of Massachusetts
- Show map of the United States
- Show all

Location [Pittsfield](#)



✓ Providence Court (Q7252412) – historic former hospital building at 379 East Street in Pittsfield, Massachusetts

item type: [construction](#) [show on map](#) [Wikidata](#)

Summary from [English Wikipedia \(enwiki\)](#)

Providence Court, previously **St. Luke's Hospital**, is a historic former hospital building at 379 East Street in Pittsfield, Massachusetts. The Colonial Revival building was constructed in 1926, and was the first Roman Catholic hospital in Berkshire County. St. Luke's merged with Pittsfield General Hospital in 1967 to form Berkshire Medical Center, in the nation's first mergers between religious and non-sectarian hospitals. The building was converted into elderly housing in 1978–1981. It was listed on the National Register of Historic Places in 1987.

NRHP reference number: **87001107**

Matches from OpenStreetMap

[379 East Street \(way\)](#) [\[OSM\]](#)

94 feet from Wikidata [address match](#)

[toggle OSM tags](#)



✓ Canoe Meadows Wildlife Sanctuary (Q17490645) – Protected Landscape in Massachusetts

item type: [protected area](#) [show on map](#) [Wikidata](#)

website: <http://www.massaudubon.org/get-outdoors/wildlife-sanctuaries/canoe-meadows>

USGS GNIS ID: **606016**



WIKICONFERENCE
NORTH AMERICA



MAPPING USA
OPENSTREETMAP US

Saving to OpenStreetMap

Login via OpenStreetMap OAuth



OpenStreetMap

Edit



History

Export

[GPS Traces](#)

[User Diaries](#)

Login

Don't have an account? [Register now](#)

Email Address or Username:

Password:

[Lost your password?](#)

Remember me

Login

Alternatively, use a third party to login:

Pittsfield

[back to candidate list](#)

Pittsfield, Berkshire County, Massachusetts, United States

category: boundary — type: administrative — OSM: [relation 1839563](#)

Please **check each match carefully** before uploading to OpenStreetMap.

If in doubt, **contact the local mapping community** before adding Wikidata tags.

change comment:

8 matches to upload

Untick the checkbox next to a match if you don't want the wikidata tag added to OSM.

Wikidata	OSM	distance	matching tags
<input checked="" type="checkbox"/> Charles Whittlesey Power House (Q5083511)	575 South Street	(way, 909 feet)	building, building=yes
<input checked="" type="checkbox"/> Providence Court (Q7252412)	379 East Street	(way, 94 feet)	
<input checked="" type="checkbox"/> A. H. Rice Silk Mill (Q22073883)	55 Spring Street	(way, 46 feet)	
<input checked="" type="checkbox"/> Bel Air Dam (Q48979941)	Bel Air Dam	(way, 331 feet)	waterway=dam
<input checked="" type="checkbox"/> Government Mill Dam (Q48987772)	Government Mill Dam	(way, 424 feet)	waterway=dam
<input checked="" type="checkbox"/> Lower Pecks Pond Dam (Q48992888)	Lower Pecks Pond Dam	(node, 323 feet)	waterway=dam
<input checked="" type="checkbox"/> Onota Lake Dam (Q48995057)	Onota Lake Dam	(way, 422 feet)	waterway=dam
<input checked="" type="checkbox"/> Pontoosuc Lake Dam (Q48996184)	Pontoosuc Lake Dam	(way, 450 feet)	waterway=dam

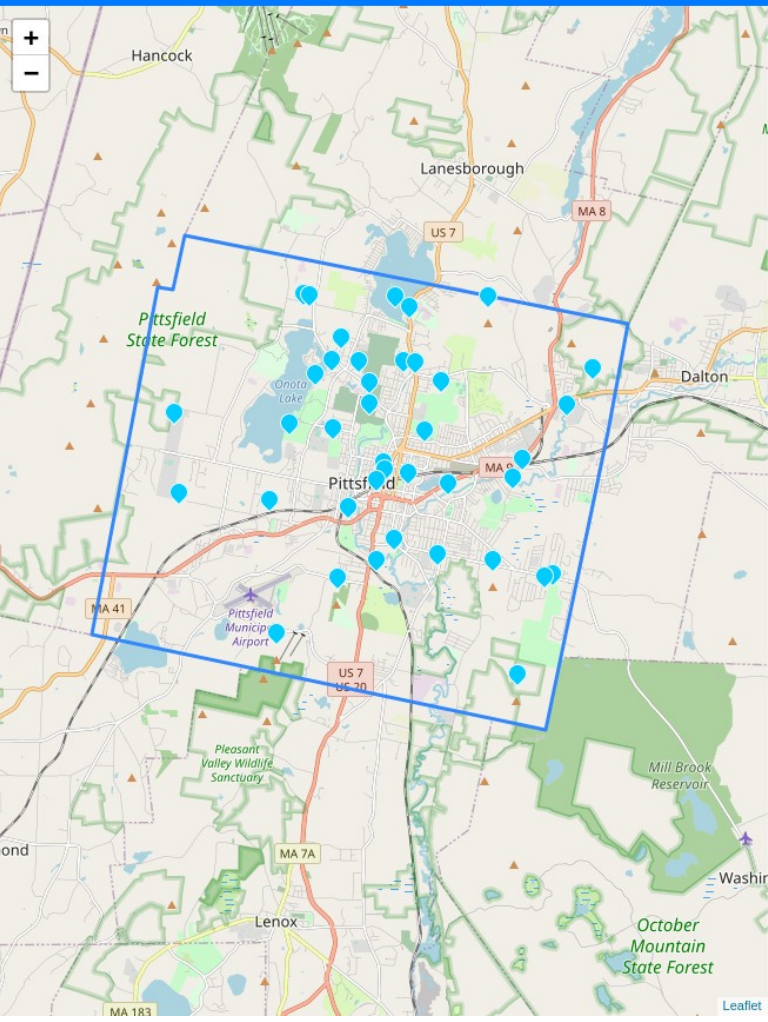


WIKICONFERENCE
NORTH AMERICA



MAPPING USA
OPENSTREETMAP US

Type filter



Pittsfield, Berkshire County, Massachusetts, United States
category: boundary — type: administrative — OSM: [relation 1839563](#)

Latest matcher run: Tue, 08 Nov 2022 21:37

Please **check each match carefully** before uploading to OpenStreetMap.
If in doubt, **contact the local mapping community** before adding Wikidata tags.

Match candidates [Already tagged](#) [No match](#)

39 candidates found
[Run matcher again](#)

Type filter

- park (Q22698): **11** matches – *area of open space used for recreation or conservation*
- green space (Q22652): **11** matches – *green area planned in an urban location*
- public space (Q294440): **11** matches – *places for public use*
- natural watercourse (Q55659167): **7** matches – *river or stream of any size*
- watercourse (Q355304): **7** matches – *channel that a flowing body of water follows*

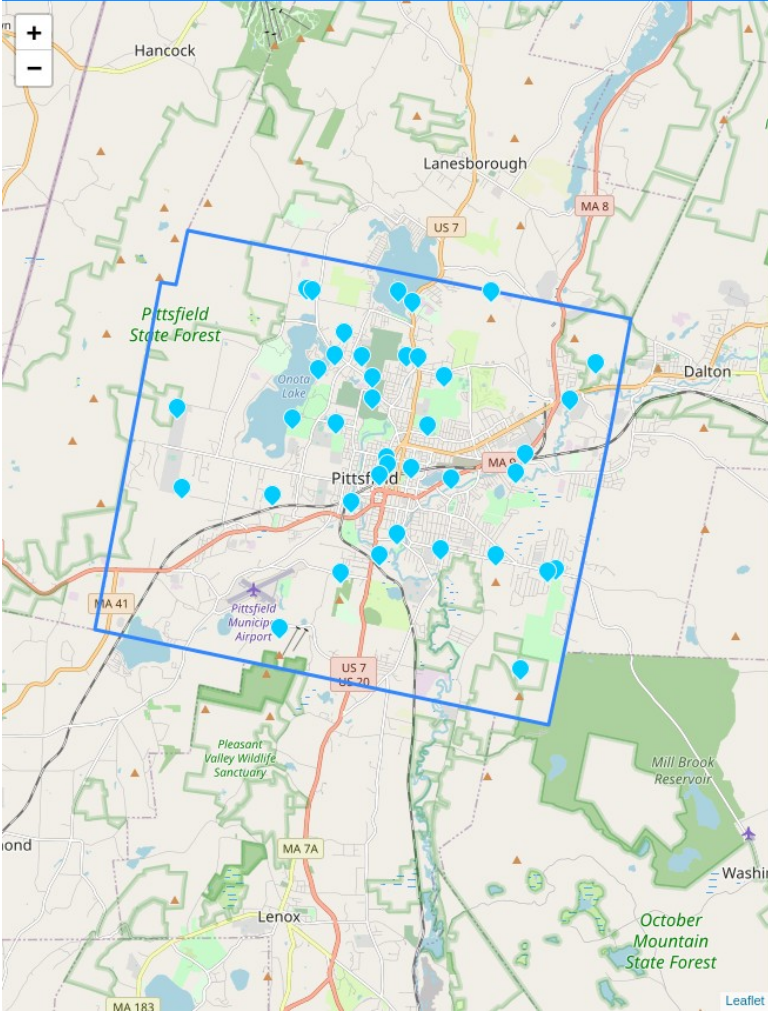
show: [more](#) / [all](#) (another 10 available)

Drag to adjust language order preference.

English (103 Wikidata labels / 1 OSM objects)
Español / Spanish (14 Wikidata labels / no OSM objects) [\[move to top\]](#)

By default all likely matches are checked. If you prefer you can [uncheck all](#) and tick items as you check them. [Show all tags](#) to see more detail for candidate matches.

[Burbank Park \(Q49476100\)](#) park in Berkshire County, Massachusetts, United States



Pittsfield, Berkshire County, Massachusetts, United States
category: boundary — type: administrative — OSM: [relation 1839563](#)

Latest matcher run: Tue, 08 Nov 2022 21:37

Please **check each match carefully** before uploading to OpenStreetMap.
If in doubt, **contact the local mapping community** before adding Wikidata tags.

Match candidates **Already tagged** No match

39 candidates found

Run matcher again

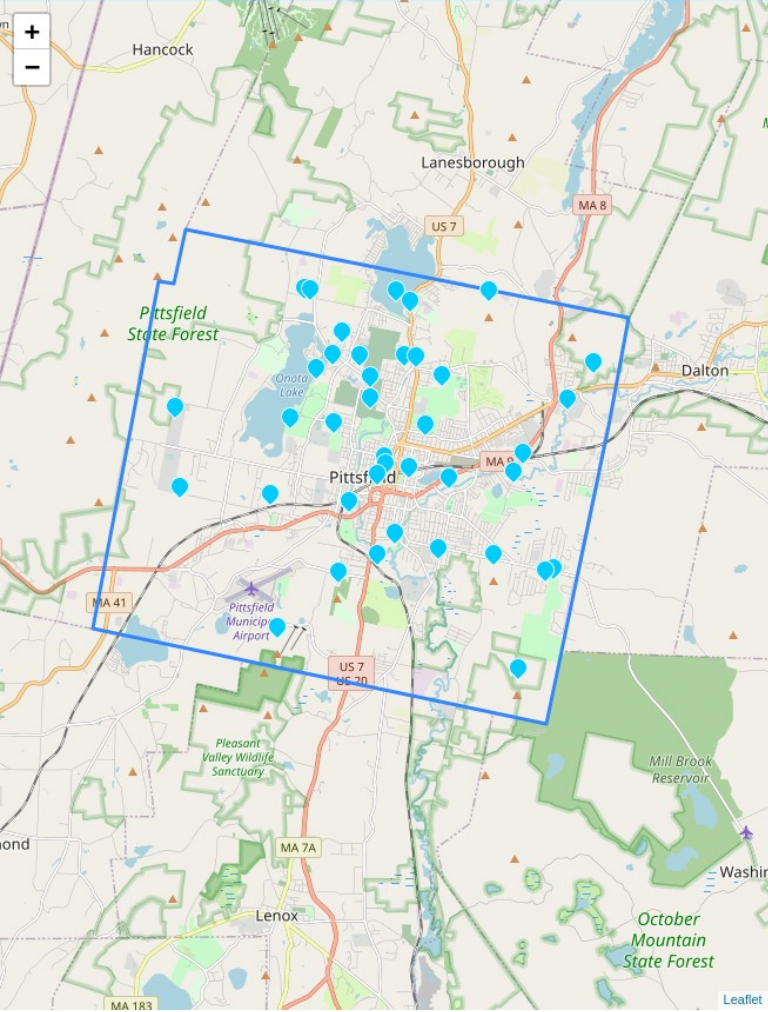
Type filter

- park (Q22698): 11 matches – *area of open space used for recreation or conservation*
 - green space (Q22652): 11 matches – *green area planned in an urban location*
 - public space (Q294440): 11 matches – *places for public use*
 - natural watercourse (Q55659167): 7 matches – *river or stream of any size*
 - watercourse (Q355304): 7 matches – *channel that a flowing body of water follows*
 - mountain (Q8502): 5 matches – *large landform that stretches above the surrounding land*
 - terrain (Q14524493): 5 matches – *Earth's surface with its elevations and accidents*
 - landform (Q271669): 5 matches – *geomorphological unit in the Earth sciences*
 - natural geographic object (Q35145263): 5 matches – *geographical object created by natural causes*
 - dam (Q12323): 5 matches – *barrier that impounds water or underground streams*
- show: [more](#) / [all](#) (another 5 available)

Drag to adjust language order preference.

English (103 Wikidata labels / 1 OSM objects)

Español / Spanish (14 Wikidata labels / no OSM objects) [\[move to top\]](#)



Pittsfield, Berkshire County, Massachusetts, United States
category: boundary — type: administrative — OSM: [relation 1839563](#)

Latest matcher run: Tue, 08 Nov 2022 21:37

Please **check each match carefully** before uploading to OpenStreetMap.
If in doubt, **contact the local mapping community** before adding Wikidata tags.

Match candidates **Already tagged** No match

39 candidates found

[Run matcher again](#)

Type filter

- park (Q22698): 11 matches – *area of open space used for recreation or conservation*
 - green space (Q22652): 11 matches – *green area planned in an urban location*
 - public space (Q294440): 11 matches – *places for public use*
 - natural watercourse (Q55659167): 7 matches – *river or stream of any size*
 - watercourse (Q355304): 7 matches – *channel that a flowing body of water follows*
 - mountain (Q8502): 5 matches – *large landform that stretches above the surrounding land*
 - terrain (Q14524493): 5 matches – *Earth's surface with its elevations and accidents*
 - landform (Q271669): 5 matches – *geomorphological unit in the Earth sciences*
 - natural geographic object (Q35145263): 5 matches – *geographical object created by natural causes*
 - dam (Q12323): 5 matches – *barrier that impounds water or underground streams*
- show: [more](#) / [all](#) (another 5 available)

Drag to adjust language order preference.

English (103 Wikidata labels / 1 OSM objects)

Español / Spanish (14 Wikidata labels / no OSM objects) [\[move to top\]](#)



By default all likely matches are checked. If you prefer you can [uncheck all](#) and tick items as you check them. [Show all tags](#) to see more detail for candidate matches.

Bel Air Dam (Q48979941) – dam in Berkshire County, Massachusetts, United States of America

item type: [dam](#) [show on map](#) [Wikidata](#)
USGS GNIS ID: **605455**

Matches from OpenStreetMap

[Bel Air Dam \(way\)](#) [OSM](#)
331 feet from Wikidata [identifier match](#) [name match](#)
[toggle name match detail](#) [toggle OSM tags](#)

Government Mill Dam (Q48987772) – dam in Berkshire County, Massachusetts, United States of America

item type: [dam](#) [show on map](#) [Wikidata](#)
USGS GNIS ID: **605450**

Matches from OpenStreetMap

[Government Mill Dam \(way\)](#) [OSM](#)
424 feet from Wikidata [identifier match](#) [name match](#)
[toggle name match detail](#) [toggle OSM tags](#)

Pittsfield

[back to candidate list](#)

Pittsfield, Berkshire County, Massachusetts, United States

category: boundary — type: administrative — OSM: [relation 1839563](#)

Please **check each match carefully** before uploading to OpenStreetMap.

If in doubt, **contact the local mapping community** before adding Wikidata tags.

change comment:

5 matches to upload

Untick the checkbox next to a match if you don't want the wikidata tag added to OSM.

Wikidata	OSM	distance	matching tags
<input checked="" type="checkbox"/> Bel Air Dam (Q48979941)	Bel Air Dam	(way, 331 feet)	waterway=dam
<input checked="" type="checkbox"/> Government Mill Dam (Q48987772)	Government Mill Dam	(way, 424 feet)	waterway=dam
<input checked="" type="checkbox"/> Lower Pecks Pond Dam (Q48992888)	Lower Pecks Pond Dam	(node, 323 feet)	waterway=dam
<input checked="" type="checkbox"/> Onota Lake Dam (Q48995057)	Onota Lake Dam	(way, 422 feet)	waterway=dam
<input checked="" type="checkbox"/> Pontoosuc Lake Dam (Q48996184)	Pontoosuc Lake Dam	(way, 450 feet)	waterway=dam



WIKICONFERENCE
NORTH AMERICA



MAPPING USA
OPENSTREETMAP US

Matching criteria



✓ Bel Air Dam (Q48979941) – dam in Berkshire County, Massachusetts, United States of America

item type: dam [show on map](#) [Wikidata](#)
USGS GNIS ID: 605455

Matches from OpenStreetMap

[Bel Air Dam \(way\)](#) [\[OSM\]](#)
331 feet from Wikidata [identifier match](#) [name match](#)
[toggle name match detail](#) [toggle OSM tags](#)

Name match detail

OSM key	OSM value	Wikimedia value
name	Bel Air Dam	Bel Air Dam good match source: ceb label, en label, cebwiki sitelink

OpenStreetMap tags

key	value	
name	Bel Air Dam	3 name matches
waterway	dam	item type tag matches
gnis:feature_id	605455	identifier matches

✓ Government Mill Dam (Q48987772) – dam in Berkshire County, Massachusetts, United States of America

item type: dam [show on map](#) [Wikidata](#)

- Main page
- Community portal
- Project chat
- Create a new Item
- Recent changes
- Random Item
- Query Service
- Nearby
- Help
- Donate

Switch to old look

Lexicographical data

- Create a new Lexeme
- Recent changes
- Random Lexeme

Tools

- What links here
- Related changes
- Special pages
- Permanent link
- Page information
- Concept URI
- Cite this page
- Automatic addition

In Wikipedia

Bel Air Dam (Q48979941)

Item [Discussion](#)

[Read](#) [View history](#) [More](#)

dam in Berkshire County, Massachusetts, United States of America

edit

In more languages

[Configure](#)

Language	Label	Description	Also known as
English	Bel Air Dam	dam in Berkshire County, Massachusetts, United States of America	

All entered languages

Statements

instance of **dam** edit

↳ 1 reference

+ add value

country **United States of America** edit

↳ 1 reference

+ add value

located in the administrative territorial entity **Berkshire County** edit

↳ 1 reference



- [Main page](#)
- [Community portal](#)
- [Project chat](#)
- [Create a new Item](#)
- [Recent changes](#)
- [Random Item](#)
- [Query Service](#)
- [Nearby](#)
- [Help](#)
- [Donate](#)

Switch to old look

Lexicographical data

- [Create a new Lexeme](#)
- [Recent changes](#)
- [Random Lexeme](#)

Tools

- [What links here](#)
- [Related changes](#)
- [Special pages](#)
- [Permanent link](#)
- [Page information](#)
- [Concept URI](#)
- [Cite this page](#)
- [Automatic addition](#)

In Wikipedia

dam (Q12323)

[Item](#) [Discussion](#)[Read](#) [View history](#) [More](#)

barrier that impounds water or underground streams

[edit](#)▼ [In more languages](#)[Configure](#)

Language	Label	Description	Also known as
English	dam	barrier that impounds water or underground streams	

[All entered languages](#)

Statements

subclass of	barrier structure edit
	▼ 0 references
	+ add reference
	infrastructure edit
	▶ 1 reference
	obstacle edit
	▼ 0 references
	+ add reference
	architectural structure edit
	▼ 0 references




OSM tag

Wikidata has a property for
OpenStreetMap tag or key

The Wikidata item for dam has the
OSM tag 'waterway=dam'

OpenStreetMap tag or key  Tag:waterway=dam

▼ 0 references

equivalent class 

<http://dbpedia.org/ontology/Dam>

described at URL

<http://mappings.dbpedia.org/index.php/OntologyClass:Dam>

retrieved

11 June 2015

▶ 1 reference

partially coincident with 

earthen wall

▼ 0 references

OpenStreetMap and Wikidata matching criteria

- entity type AND
- coordinates AND
- name OR
street address OR
identifier



WIKICONFERENCE
NORTH AMERICA



MAPPING USA
OPENSTREETMAP US



Photo by Edward Betts // CC 0

Match on identifier

- Railway station code
- IATA airport code
- ICAO airport code
- FAA airport code
- ISO 3166-2 country code
- NRHP reference number
- FIPS 6-4 (US counties)
- FIPS 5-2 (code for US states)
- USGS GNIS ID
- IBNR ID
- National Heritage List for England number
- UK Government Statistical Service code
- EDUBase URN
- Admiralty number (lighthouse)
- Website

Not using Wikipedia tags to find matches

- Sometimes wrong
- Less interesting problem
- Expected somebody else to
- Plan to do it eventually



WIKICONFERENCE
NORTH AMERICA



MAPPING USA
OPENSTREETMAP US



Photo by Edward Betts // CC 0



WIKICONFERENCE
NORTH AMERICA



MAPPING USA
OPENSTREETMAP US

Unsupported item types

Tunnels

Wikidata usually represents tunnels as a single item

OSM often represents them as two ways, one for each direction of traffic or tunnel bore

The software should be changed to recognise tunnels and add the Wikidata tag to both ways



WIKICONFERENCE
NORTH AMERICA



MAPPING USA
OPENSTREETMAP US



Photo by Edward Betts // CC BY-SA-3.0

Rivers

OSM represents rivers as linear relations

The matcher uses a tool called `osm2pgsql` to load OSM data into Postgis for querying

The only type of relation supported by `osm2pgsql` is a polygon

The data model it uses has no support for linear relations



WIKICONFERENCE
NORTH AMERICA



MAPPING USA
OPENSTREETMAP US



Photo by Edward Betts // CC 0

Tram stops

Wikidata represents tram stops in both directions as a single item

OSM represents tram stops as a two node, one for each direction

The nodes are combined into a single relation

These relations are unsupported in osm2pgsql, so the matcher fails to identifier the relation

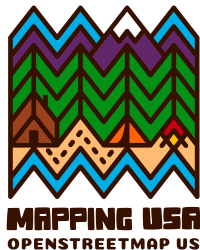


Photo by Edward Betts // CC BY-SA-3.0

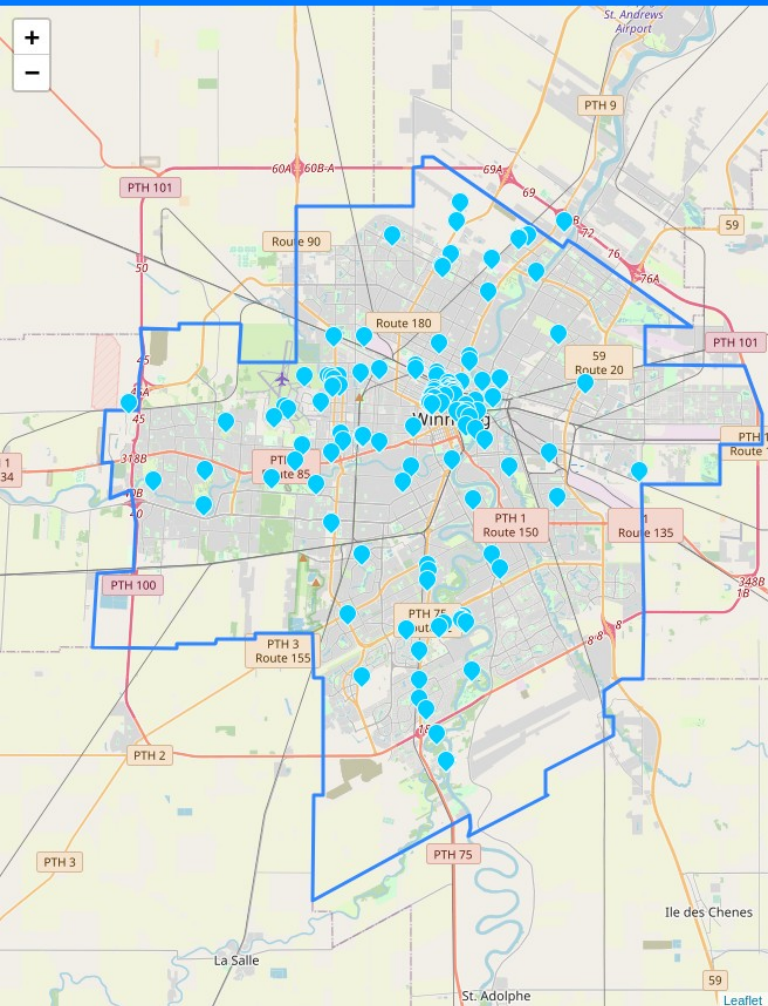


WIKICONFERENCE
NORTH AMERICA



MAPPING USA
OPENSTREETMAP US

Language switcher



Winnipeg, Division No. 11, Manitoba, Canada
category: boundary — type: administrative — OSM: [relation 1790696](#)

Latest matcher run: Fri, 11 Nov 2022 09:17

Please **check each match carefully** before uploading to OpenStreetMap.
If in doubt, **contact the local mapping community** before adding Wikidata tags.

Match candidates **Already tagged** No match

Wikidata tags already added to OSM with this tool.

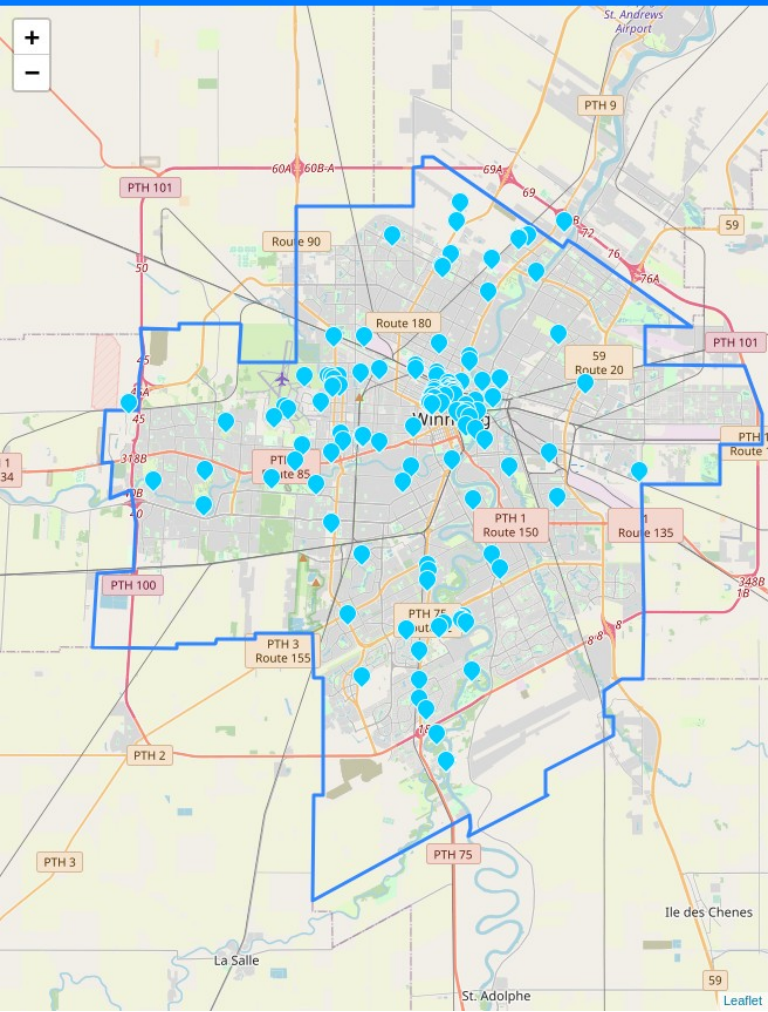
- 10:20 Sat, 28 Mar 2020: [Edward](#) added tags to 2 OSM elements [view changeset](#)
Change comment: "Add wikidata tags to shopping malls in Winnipeg, Manitoba, Canada."
- 10:19 Sat, 28 Mar 2020: [Edward](#) added tags to 4 OSM elements [view changeset](#)
Change comment: "Add wikidata tags to hospitals in Winnipeg, Manitoba, Canada."
- 10:19 Sat, 28 Mar 2020: [Edward](#) added tags to 2 OSM elements [view changeset](#)
Change comment: "Add wikidata tags to sports venues in Winnipeg, Manitoba, Canada."
- 08:45 Sat, 28 Mar 2020: [Edward](#) added tags to 6 OSM elements [view changeset](#)
Change comment: "Add wikidata tags to schools in Winnipeg, Manitoba, Canada."
- 01:00 Tue, 19 Feb 2019: [ParagonPrime](#) added tags to 146 OSM elements [view changeset](#)
Change comment: "add wikidata tags within Winnipeg"

125 candidates found

[Run matcher again](#)

Type filter

- business enterprise (Q4830453): **28** matches – *organization involved in the trade of goods, services, or both to customers for pay*
 - commercial building (Q655686): **27** matches – *building used for commercial use*
 - hotel (Q27686): **25** matches – *establishment that provides lodging paid on a short-term basis*
 - lodging (Q5056668): **25** matches – *type of residential accommodation*
 - human settlement (Q486972): **22** matches – *community of any size, in which people live*
- show [more](#) / [all](#) (another 56 available)



- 10:19 Sat, 28 Mar 2020: [Edward](#) added tags to 2 OSM elements [view changeset](#)
Change comment: "Add wikidata tags to sports venues in Winnipeg, Manitoba, Canada."
- 08:45 Sat, 28 Mar 2020: [Edward](#) added tags to 6 OSM elements [view changeset](#)
Change comment: "Add wikidata tags to schools in Winnipeg, Manitoba, Canada."
- 01:00 Tue, 19 Feb 2019: [ParagonPrime](#) added tags to 146 OSM elements [view changeset](#)
Change comment: "add wikidata tags within Winnipeg"

125 candidates found

Run matcher again

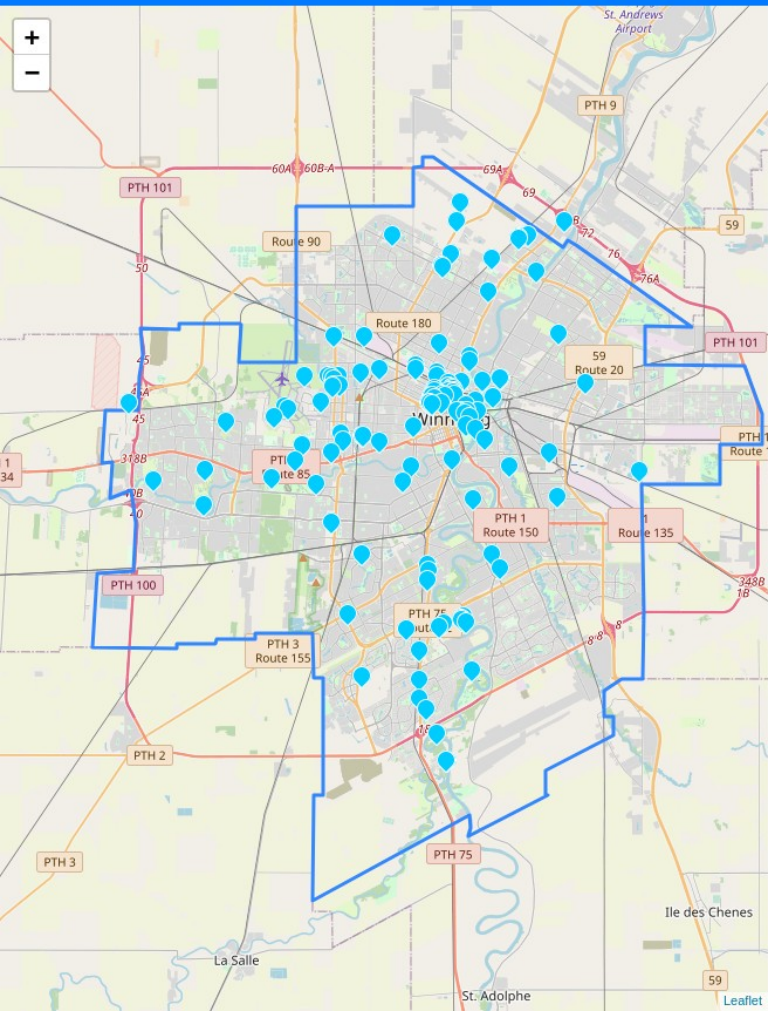
Type filter

- business enterprise (Q4830453): **28** matches – organization involved in the trade of goods, services, or both to customers for pay
 - commercial building (Q655686): **27** matches – building used for commercial use
 - hotel (Q27686): **25** matches – establishment that provides lodging paid on a short-term basis
 - lodging (Q5056668): **25** matches – type of residential accommodation
 - human settlement (Q486972): **22** matches – community of any size, in which people live
- show: [more](#) / [all](#) (another 56 available)

Drag to adjust language order preference.

- English (602 Wikidata labels / 25 OSM objects)
- Français / French (290 Wikidata labels / 33 OSM objects) [\[move to top\]](#)
- Deutsch / German (96 Wikidata labels / 5 OSM objects) [\[move to top\]](#)
- Nederlands / Dutch (90 Wikidata labels / no OSM objects) [\[move to top\]](#)
- Español / Spanish (75 Wikidata labels / 5 OSM objects) [\[move to top\]](#)

By default all likely matches are checked. If you prefer you can [uncheck all](#) and tick items as you check them. [Show all tags](#) to see more detail for candidate matches.



- 10:19 Sat, 28 Mar 2020: [Edward](#) added tags to 2 OSM elements [view changeset](#)
Change comment: "Add wikidata tags to sports venues in Winnipeg, Manitoba, Canada."
- 08:45 Sat, 28 Mar 2020: [Edward](#) added tags to 6 OSM elements [view changeset](#)
Change comment: "Add wikidata tags to schools in Winnipeg, Manitoba, Canada."
- 01:00 Tue, 19 Feb 2019: [ParagonPrime](#) added tags to 146 OSM elements [view changeset](#)
Change comment: "add wikidata tags within Winnipeg"

125 candidates found

Run matcher again

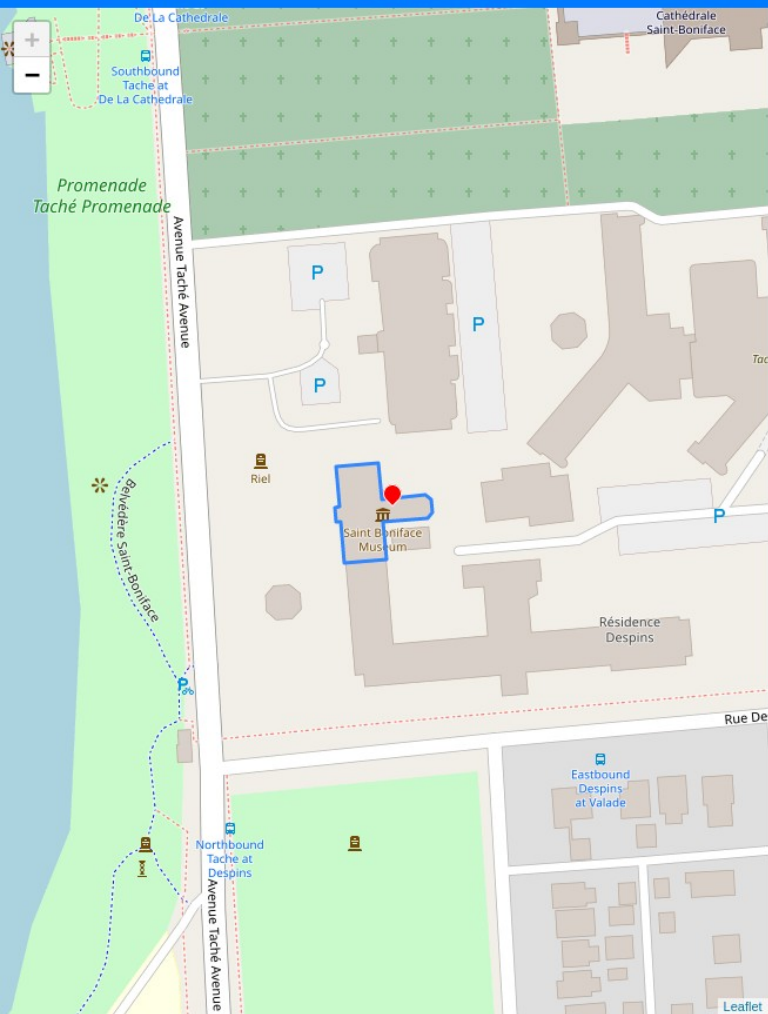
Type filter

- entreprise (Q4830453): **28** matches – *organisation qui vend des biens et/ou des services*
 - bâtiment commercial (Q655686): **27** matches – *bâtiment destiné au commerce*
 - hôtel (Q27686): **25** matches – *établissement offrant un service d'hébergement payant*
 - hébergement (Q5056668): **25** matches
 - établissement humain (Q486972): **22** matches – *terme générique pour un site d'habitation permanent ou temporaire d'une communauté*
- show: [more](#) / [all](#) (another 56 available)

Drag to adjust language order preference.

- Français / French (290 Wikidata labels / 33 OSM objects)
- English (602 Wikidata labels / 25 OSM objects) [\[move to top\]](#)
- Deutsch / German (96 Wikidata labels / 5 OSM objects) [\[move to top\]](#)
- Nederlands / Dutch (90 Wikidata labels / no OSM objects) [\[move to top\]](#)
- Español / Spanish (75 Wikidata labels / 5 OSM objects) [\[move to top\]](#)

By default all likely matches are checked. If you prefer you can [uncheck all](#) and tick items as you check them. [Show all tags](#) to see more detail for candidate matches.



musée de Saint-Boniface (Q3329745) – musée dédié à l'histoire franco-manitobaine

item type: [musée / couvent](#) [show on map](#) [Wikidata](#)

Summary from Français / French Wikipedia (frwiki)

Le **Musée de Saint-Boniface** est un musée situé à Winnipeg dans le Manitoba au Canada. Le musée de Saint-Boniface est consacré à la culture métisse et francophone ainsi qu'au patrimoine historique franco-manitobain. Il est situé au 494, avenue Taché, entre l'avenue de la Cathédrale et la rue Despins, à Saint-Boniface, faisant partie du district Riel de la ville de Winnipeg. Le bâtiment principal conventionnel, qui s'élève au fond d'un grand jardin, fait face à la rivière Rouge. Le musée est situé à côté du Collège universitaire de Saint-Boniface et de la cathédrale de Saint-Boniface.

Street address:

494, avenue Taché, Winnipeg, MB R2H 2B2

494 Tache Avenue, Winnipeg, MB R2H 2B2

website: <https://msbm.mb.ca/>, <https://msbm.mb.ca/fr/visite/>

Matches from OpenStreetMap

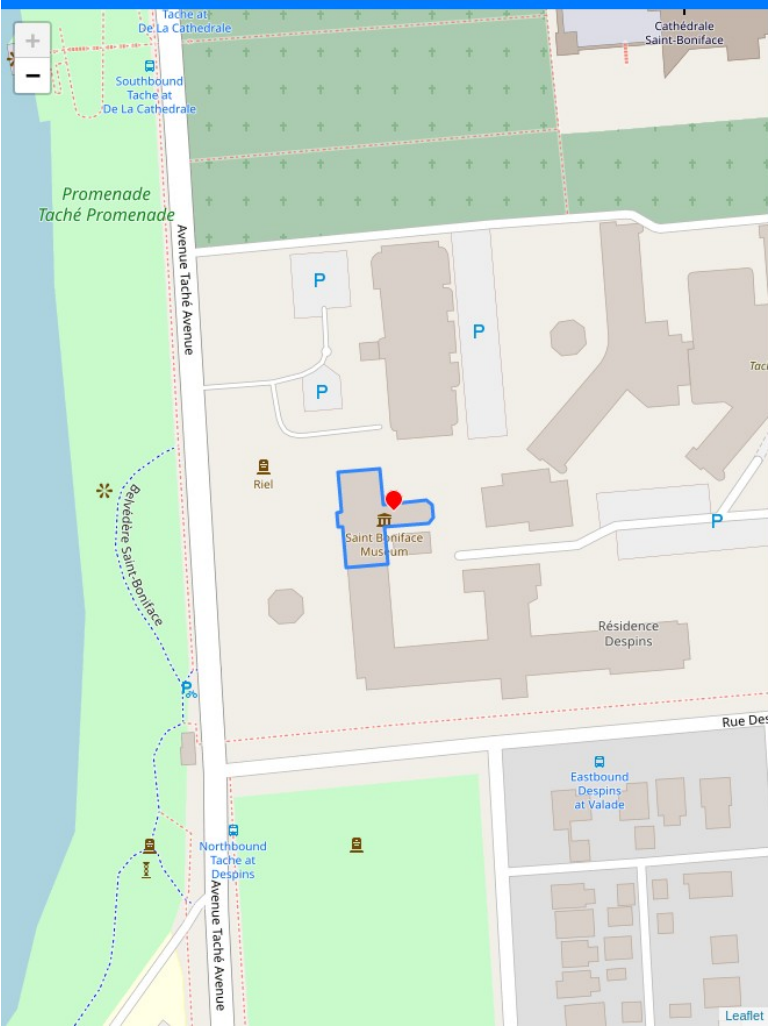
[Saint Boniface Museum \(way\)](#) [\[OSM\]](#)

[exact location](#) [identifiant match](#) [nom match](#)

[toggle nom match détail](#) [toggle OSM tags](#)



édifice de la Great-West Life (Q62020836) – immeuble de bureaux à Winnipeg (Manitoba)



✓ Le Musée de Saint-Boniface Museum (Q3329745) – museum in Winnipeg, Canada

item type: [museum](#) / [convent](#) [show on map](#) [Wikidata](#)

Summary from [English Wikipedia \(enwiki\)](#)

Le Musée de Saint-Boniface Museum (also known as the **St. Boniface Museum**) is a museum in Winnipeg, Manitoba, Canada, that is dedicated to Franco-Manitoban and Métis culture and history.

Street address:

494, avenue Taché, Winnipeg, MB R2H 2B2

494 Tache Avenue, Winnipeg, MB R2H 2B2

website: <https://msbm.mb.ca/>, <https://msbm.mb.ca/fr/visite/>

Matches from OpenStreetMap

Saint Boniface Museum (way) [\[OSM\]](#)

[exact location](#) [identifier match](#) [name match](#)

[toggle name match detail](#)

[toggle OSM tags](#)



✓ Great-West Life Building (Q62020836) – office building in Winnipeg, Manitoba

item type: [office building](#) [show on map](#) [Wikidata](#)

Street address:

177 Lombard Avenue

Matches from OpenStreetMap



WIKICONFERENCE
NORTH AMERICA



MAPPING USA
OPENSTREETMAP US

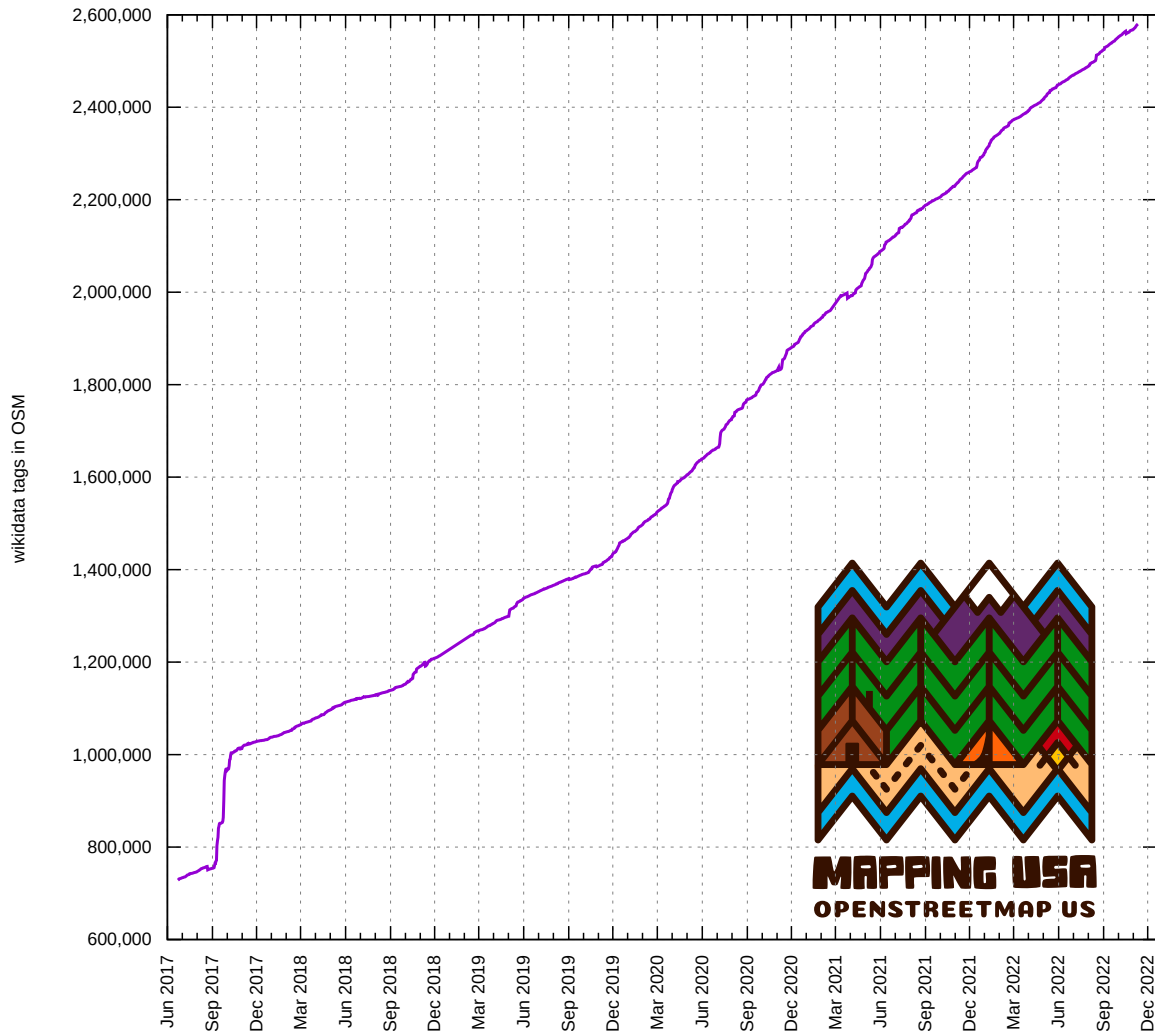
Statistics

Tag count

There are 2,580,000 objects with a 'wikidata' tag in OpenStreetMap



**WIKICONFERENCE
NORTH AMERICA**



Mappers are using the tool

Mappers

385

Number of people who have
used the tool to edit OSM

Changesets

23k

Uploaded to OpenStreetMap

Wikidata tags added

669k

Things that have been
matched

Added by this tool

26%

Percent of wikidata tags in
OSM added by this tool



WIKICONFERENCE
NORTH AMERICA



MAPPING USA
OPENSTREETMAP US

Licenses

Different licenses

- Wikidata is licensed CC0 or Public Domain
- OpenStreetMap uses the Open Database License (OdbL)
- Copying data from OpenStreetMap to Wikidata would violate the OdbL



WIKICONFERENCE
NORTH AMERICA



MAPPING USA
OPENSTREETMAP US



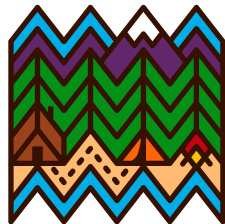
Photo by Edward Betts // CC 0

Different intellectual property jurisdiction

- OpenStreetMap asserts database rights which exist under European law
- Wikidata operates under US intellectual property rules
- Facts are not protected in US law



WIKICONFERENCE
NORTH AMERICA



MAPPING USA
OPENSTREETMAP US



Photo by Edward Betts // CC 0



WIKICONFERENCE
NORTH AMERICA



MAPPING USA
OPENSTREETMAP US

OWL Map

map.osm.wikidata.link

Map-based web interface for
linking OSM to Wikidata

place search

Searching for 'pittsfield', found 0 places.

item type filter

Map key

- Wikidata item without OSM link
- Wikidata item with OSM link
- Linked OSM object

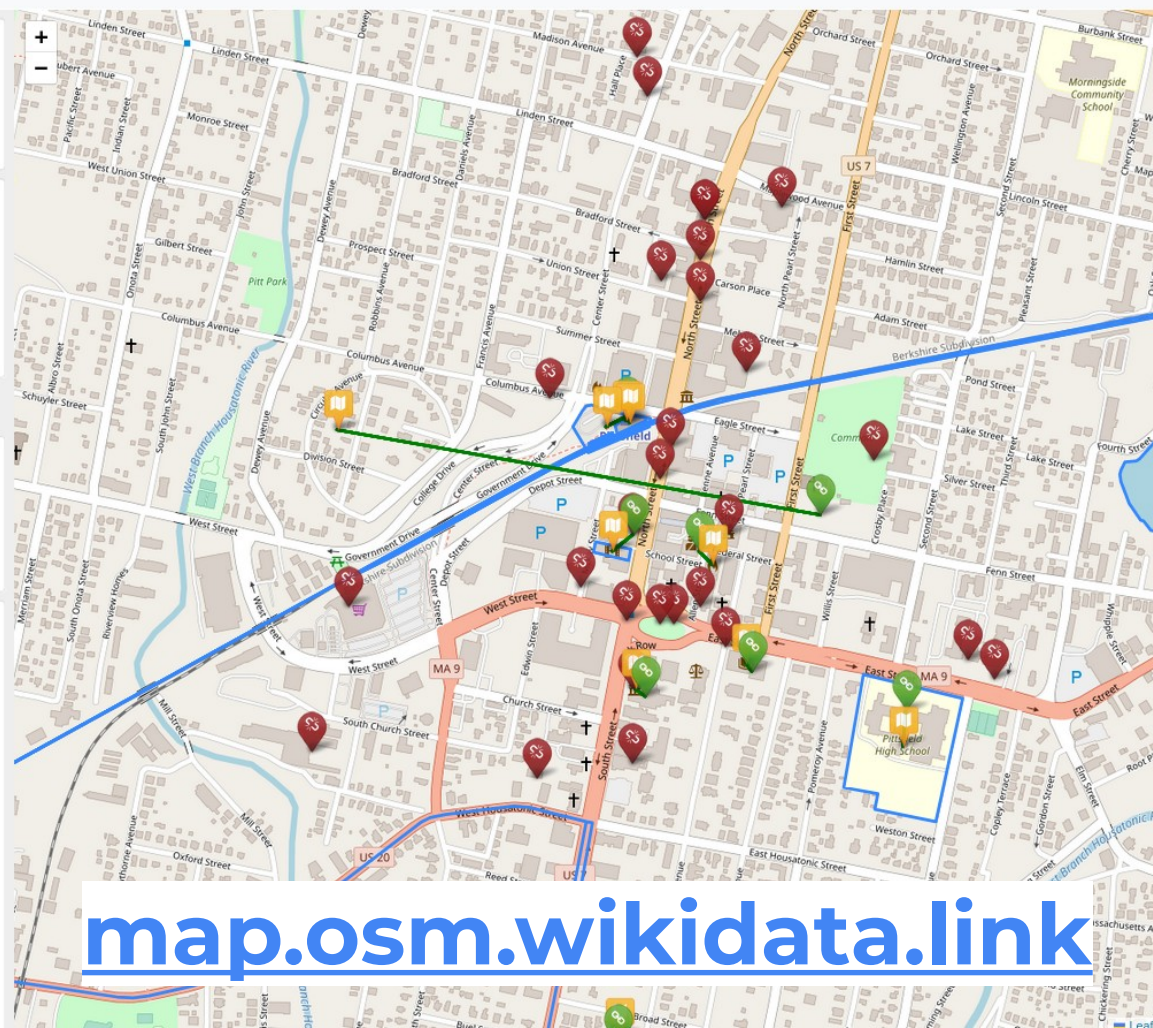
Map filters Items

OSM/Wikidata link status

- Wikidata items tagged in OSM 15
- Wikidata items not tagged in OSM 31

item types

- movie theater (Q41253) [only](#) 9
- historic district (Q15243209) [only](#) 4
- destroyed building or structure (Q19860854) [only](#) 4
- high school (Q9826) [only](#) 3
- nonprofit organization (Q163740) [only](#) 2
- human-made geographic feature (Q811430) [only](#) 2
- hotel (Q27686) [only](#) 2
- railway station (Q55488) [only](#) 1



map.osm.wikidata.link

item detail 🔍 zoom in on item

Wikidata item
[Berkshire Yankee Suites - An Extended Stay Hotel](#) (Q112027558)

description
hotel in Pittsfield, United States

aliases
Berkshire Yankee Suites - An Extended Stay Hotel

item coordinates
[42.44598, -73.25589](#)

item type
[hotel](#) (Q27686)
 debug

🔒 Close item to zoom out.

OSM tags/keys to search for
5 tags/keys to consider [show/hide](#)

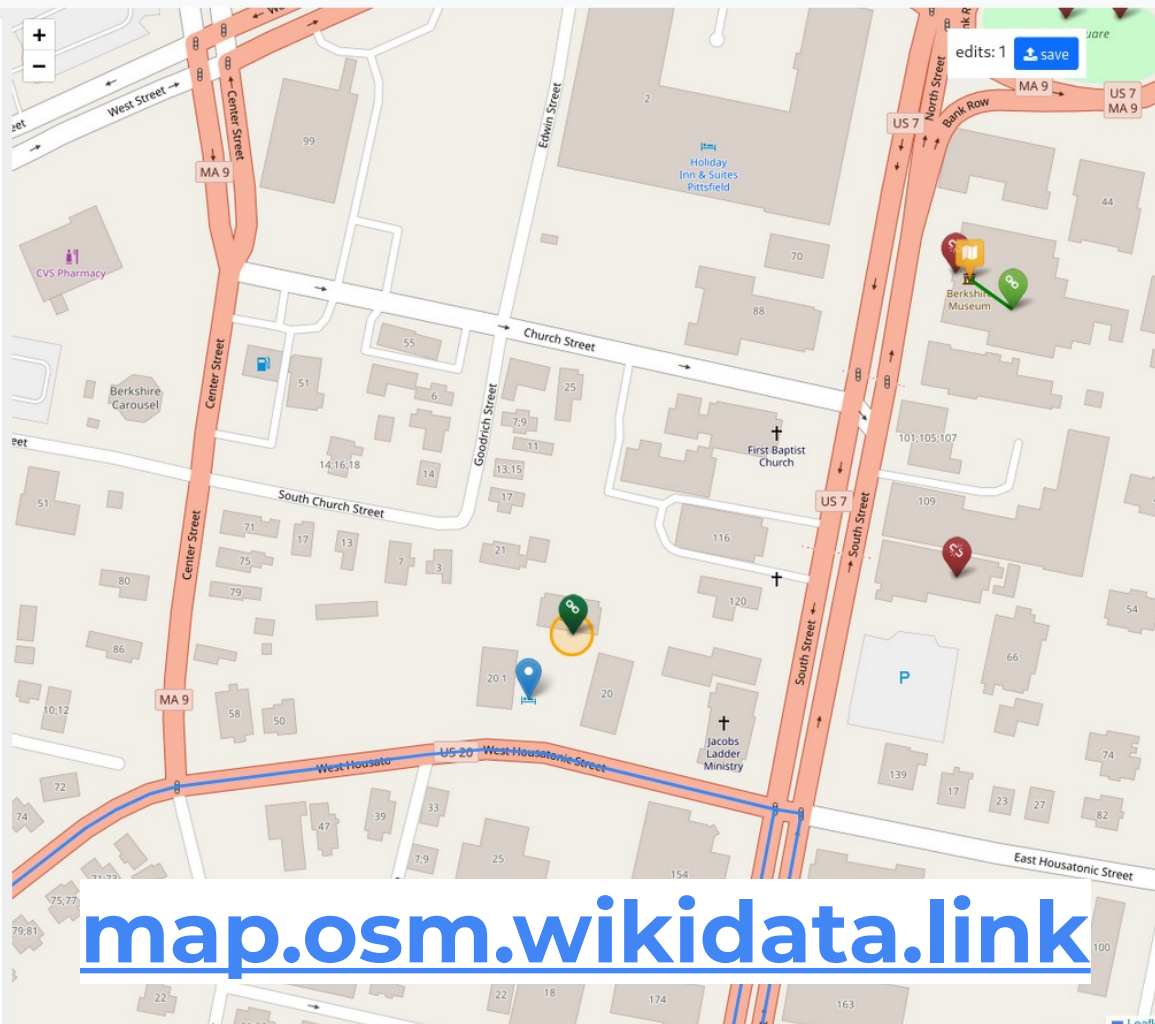
- Tag:building=hotel
- Tag:landuse=residential
- Tag:tourism=guest_house
- Tag:tourism=hostel
- Tag:tourism=hotel

📌 Use the save button in the top right corner of the map to upload changes.

Possible OSM matches (sorted by distance from item)

show: tags area type

- 34m [📍](#) Yankee Suites Extended Stay node
 name: Yankee Suites Extended Stay tags
 tourism: hotel
- 215m [📍](#) Holiday Inn & Suites Pittsfield node
 Brand Wikidata tag: [Q2717882](#) different item
 brand: Holiday Inn tags
 brand:wikidata: Q2717882
 brand:wikipedia: en:Holiday Inn
 name: Holiday Inn & Suites Pittsfield
 toilets:wheelchair: yes
 tourism: hotel
 wheelchair: yes
- 537m [📍](#) Berkshire Inn node
 name: Berkshire Inn tags
 tourism: hotel
- 799m [📍](#) Hotel on North node



map.osm.wikidata.link

item detail [zoom in on item](#)

Wikidata item
[William Russell Allen House](#) (Q8017858)
item coordinates
[42.44778, -73.24694](#)
item type
[single-family detached home](#) (Q1307276)
Wikipedia
[en](#)
heritage designation
[National Register of Historic Places listed place](#) (Q19558910)

Close item to zoom out.

OSM tags/keys to search for
10 tags/keys to consider [show/hide](#)

Image from Wikidata



[enlarge image](#)

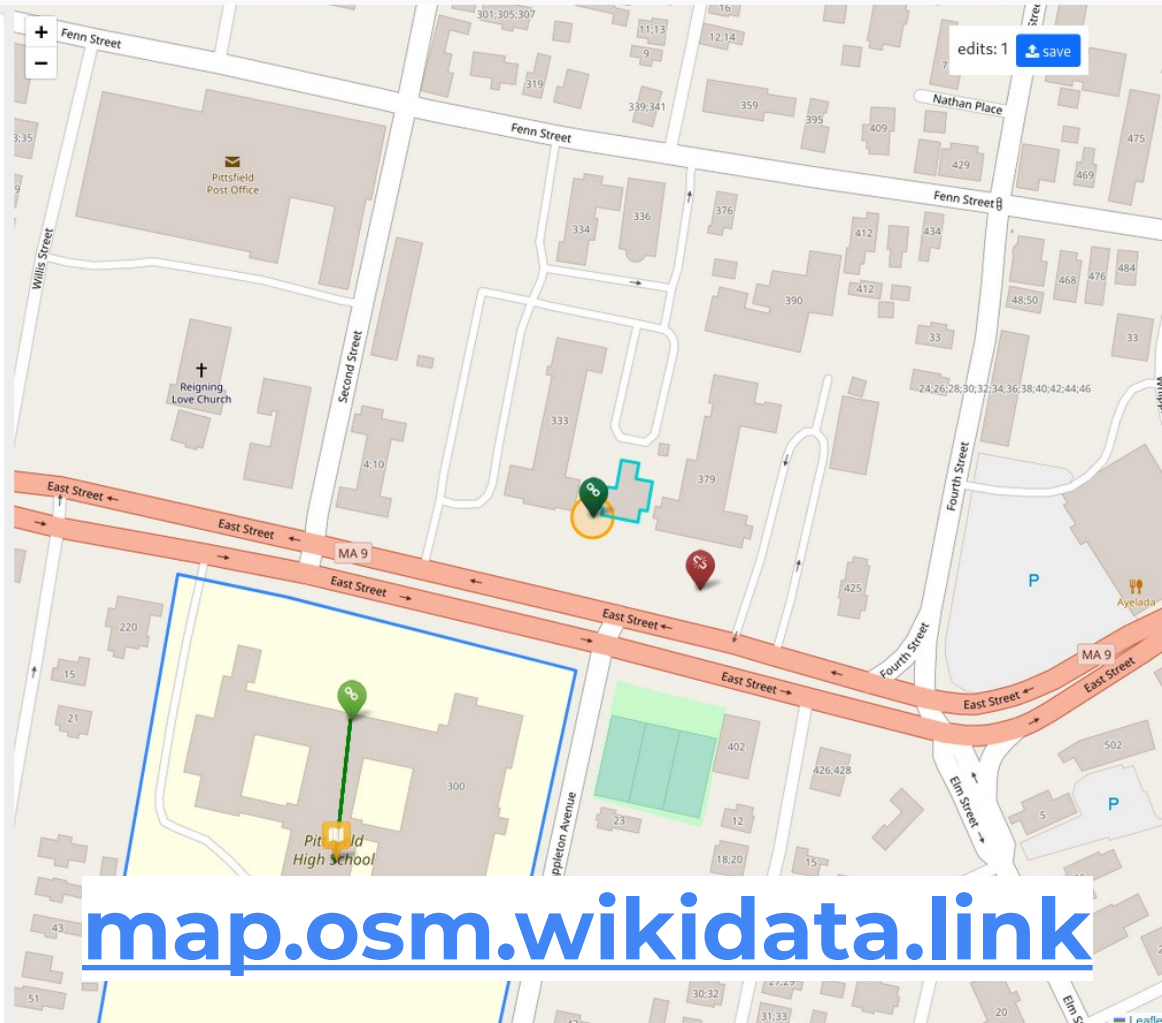
identifiers
 NRHP reference number: 80000427
 debug

Use the save button in the top right corner of the map to upload changes.

Possible OSM matches (sorted by distance from item)

show: tags area type

- 4m [no name](#) [way](#)
 [tags](#)
building: yes
- 9m [333 East Street](#) [way](#)
 [tags](#)
addr:housenumber: 333
addr:street: East Street
building: yes
- 26m [379 East Street](#) [way](#)
 [tags](#)
addr:housenumber: 379
addr:street: East Street



map.osm.wikidata.link

Upload to OpenStreetMap

Editing is live, changes will be uploaded to OpenStreetMap.

2 edits to upload

Changeset comment

+wikidata

Save to OpenStreetMap

William Russell Allen House (Q8017858)

item type

[single-family detached home](#) (Q1307276)

OSM matches

4m no name

add tag: [wikidata=Q8017858](#)

Berkshire Yankee Suites - An Extended Stay Hotel (Q112027558)

description

hotel in Pittsfield, United States

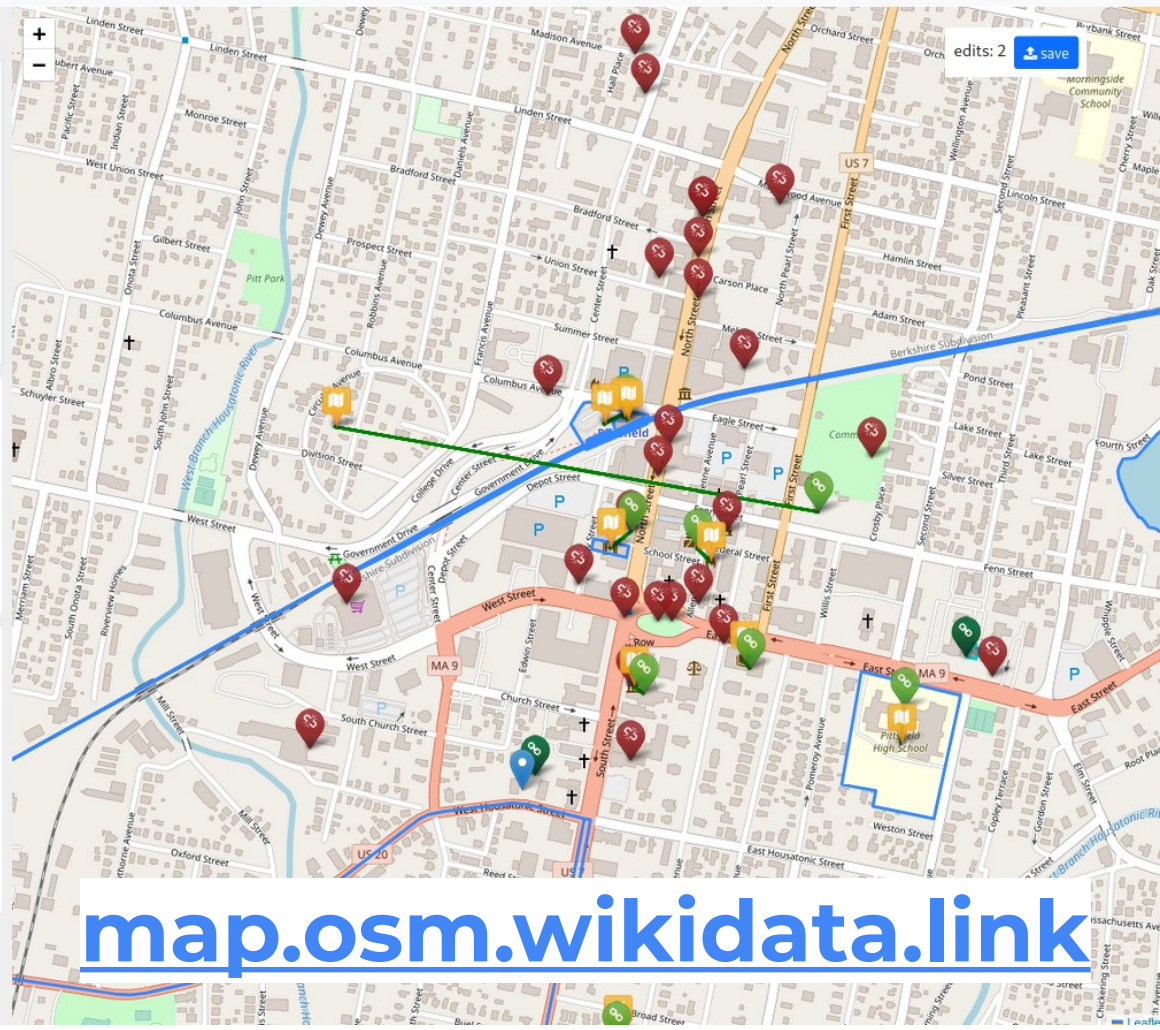
item type

[hotel](#) (Q27686)

OSM matches

34m Yankee Suites Extended Stay

add tag: [wikidata=Q112027558](#)



map.osm.wikidata.link

OWN Map progress

- OWL Map is too slow
- Need a more powerful machine or to optimise the database
- Ultimately the two tools should be combined into one



WIKICONFERENCE
NORTH AMERICA



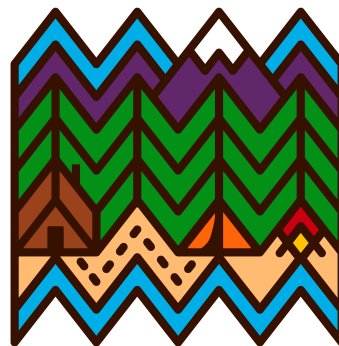
MAPPING USA
OPENSTREETMAP US



Photo by Edward Betts // CC 0



**WIKICONFERENCE
NORTH AMERICA**



**MAPPING USA
OPENSTREETMAP US**

osm.wikidata.link