

2,61

41535 L.C. Myanster

LIBRARY RECEIVED  
★ JUL 12 1935 ★  
U. S. Department of Agriculture.

# An Advance Offering of Henderson's Flowering Bulbs

For Fall Planting  
**MAY WE BOOK  
YOUR ORDER  
BY JULY 15th**  
SO THAT WE MAY IMPORT  
YOUR BULBS WITH OURS—  
FOR DELIVERY NEXT FALL?

As an inducement we quote in this catalogue exceptionally inviting prices. After July 15th we will not be bound by these rates.

On all Orders for Bulbs Selected from this Catalogue Received by us up to July 15th, 1935, for Fall Delivery, We will pay the Transportation Charges to all Points East of the Mississippi River.

**PETER HENDERSON & CO.**  
35 Cortlandt Street New York, N. Y.



*The Border Collection*

Henderson's Border Collection of Giant Darwin Tulips. See page 2

# An Advance Offering of Henderson's Flowering Bulbs

FOR FALL PLANTING

## MAY WE BOOK YOUR ORDER BEFORE JULY 15th

SO THAT WE MAY IMPORT YOUR BULBS WITH OURS—FOR DELIVERY NEXT FALL?

We quote exceptionally inviting prices in this catalogue. After July 15th we will not be bound by these rates.

On all Orders for Bulbs Selected from this Catalogue Received by us up to July 15th, 1935, for Fall Delivery, We will pay the Transportation Charges to all Points East of the Mississippi River.

Bulbs are practically all grown in Holland and as we are large importers we get the pick and import only "firsts", although great quantities known as "seconds" are on the market, and are often sold by local dealers. Having been engaged in the bulb importing business for three-quarters of a century, we know intimately all the best growers of the different varieties in Holland; some excel in growing one kind, and some in another, so that we are in a position to get the best qualities of **All Varieties**.

To obtain the best we advise you to order bulbs as soon as you receive this catalogue. Of course such orders being specially imported for you with our own orders, will not be subject to cancellation. Bulbs and roots mature and ripen at different periods during the late summer and autumn, and shipment will be made as follows in the absence of contrary instructions.

Our August shipment includes Liliun Harrisii, Freesias, Roman and French Hyacinths, Paper White Narcissus and Callas. Our September and October Main Shipment includes the general line of bulbs, such as Hyacinths, Tulips, Narcissus, Crocus, Iris, Peonies, Snowdrops, Scillas, etc. Our November shipment includes Lily of the Valley, Hardy Lilies, etc.

"Henderson's Bulb Culture" 68 pages, size 7½ x 9½ inches. 32 pages of illustrations. Price, postpaid, 75 cents. We also send it free with orders for bulbs amounting to three dollars or over if requested.

### BUSINESS RULES, ETC.

**TRANSPORTATION**—All Vegetable Seeds, Flower Seeds, Grass Seeds and Bulbs offered in this catalogue will be delivered—at the prices listed, transportation paid in the U. S. and Possessions. In making this Free Delivery offer we reserve the right to ship goods either by Parcel Post, Express or Freight.

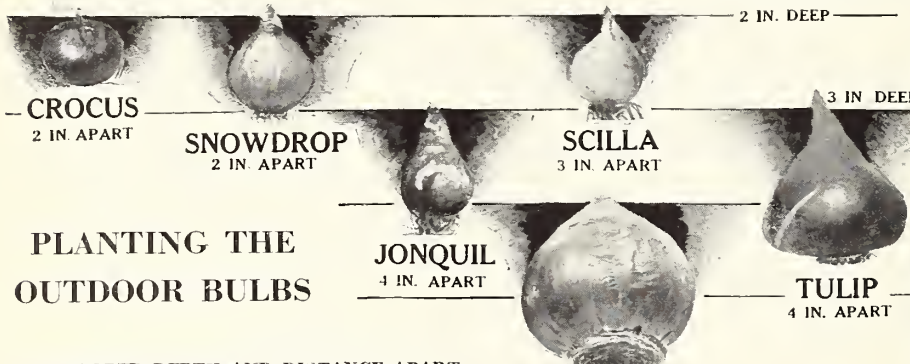
**ACCOUNTS**—Parties having no account with us—who order goods without remittance—must furnish satisfactory reference. New York City reference preferred on account of the shorter delay pending investigation.

**REMITTANCES** may be made by Express Money Order, P. O. Money Order or Bank Draft; if bills or silver send in a Registered Letter, otherwise it is at sender's risk. We must decline sending goods C. O. D. unless 25% of their value accompanies the order.

**NOTE**—If cash or stamps are sent by mail REGISTER THE LETTER otherwise it travels at owner's risk. Letters are frequently lost in transit. Send 2c stamps only.

**WE DO NOT SUPPLY DEALERS**, therefore our Bulbs, Seeds, etc., can only be procured by sending orders direct to us.

**ALL GARDENERS OF EXPERIENCE** know that success depends largely on weather conditions and proper cultivation, so in accordance with the universal custom of the trade **Peter Henderson & Co.** gives no warranty, express or implied, as to description, quality, productiveness, or any other matter, of any Seeds, Bulbs, Plants or Roots they send out, and they will not be in any way responsible for the crop.



### PLANTING THE OUTDOOR BULBS

THE PROPER DEPTH AND DISTANCE APART  
TO PLANT THE OUTDOOR BULBS

Diameter of Bed	Distance Apart	
	4 in. Apart	6 in. Apart
3 feet.....	95 Bulbs	37 Bulbs
4 feet.....	127 "	61 "
5 feet.....	225 "	81 "
6 feet.....	271 "	127 "
7 feet.....	410 "	169 "
8 feet.....	469 "	225 "
9 feet.....	650 "	271 "
10 feet.....	721 "	331 "

## THE NEW BULB PLANTER

IT MAKES PLANTING  
EASY!

This handy tool makes the type of hole best suited to bulbs. They do best when planted with the root end resting on a firm, flat base, free from air pockets. It is equally useful for setting out small plants. Merely push the tool into the soil with a slight twist. Continue this motion as you remove the tool and the soil comes with it, leaving a clean flat-bottomed hole. This soil is pushed out when the operation is repeated.



Price, 50c,  
transportation paid.

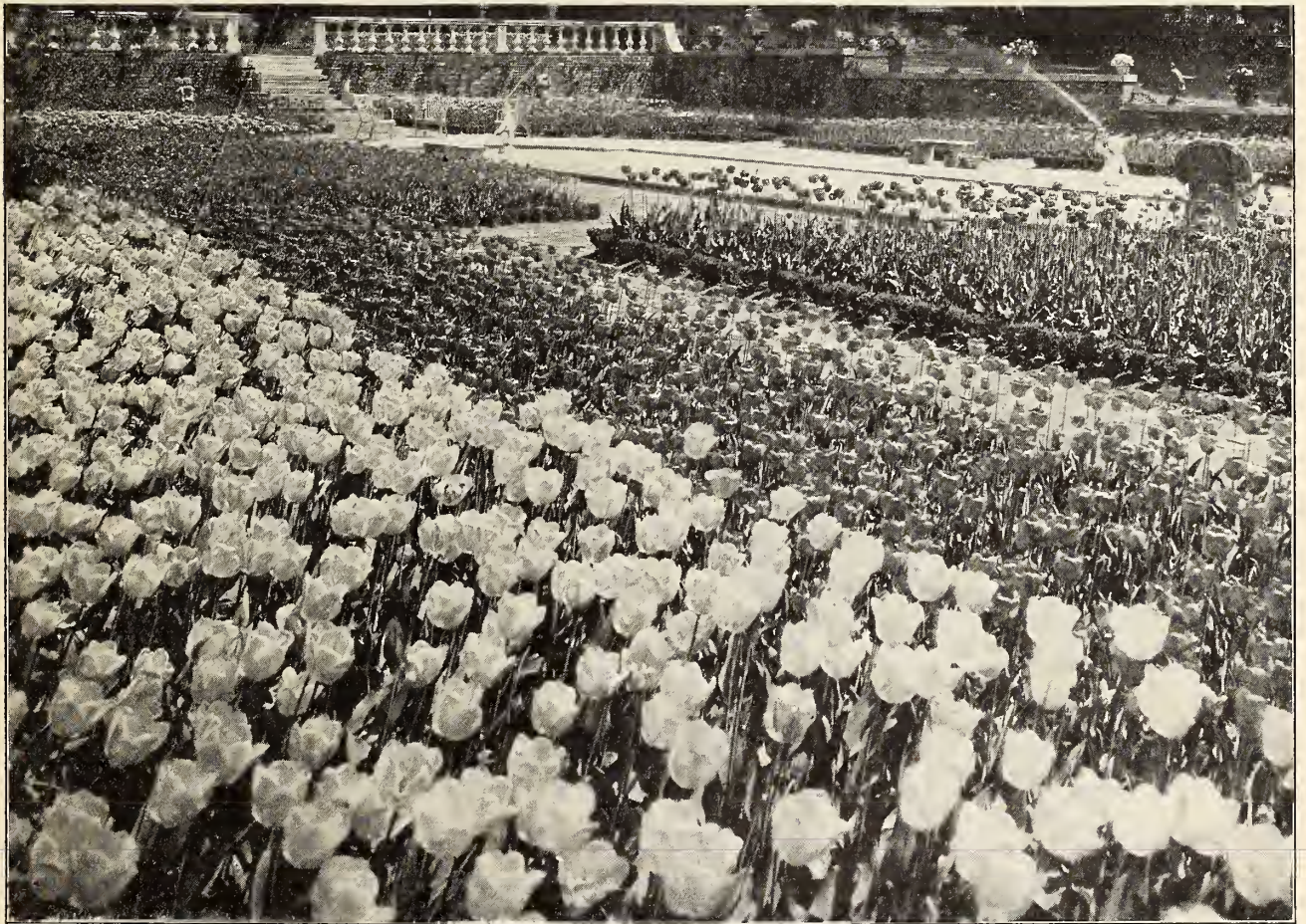
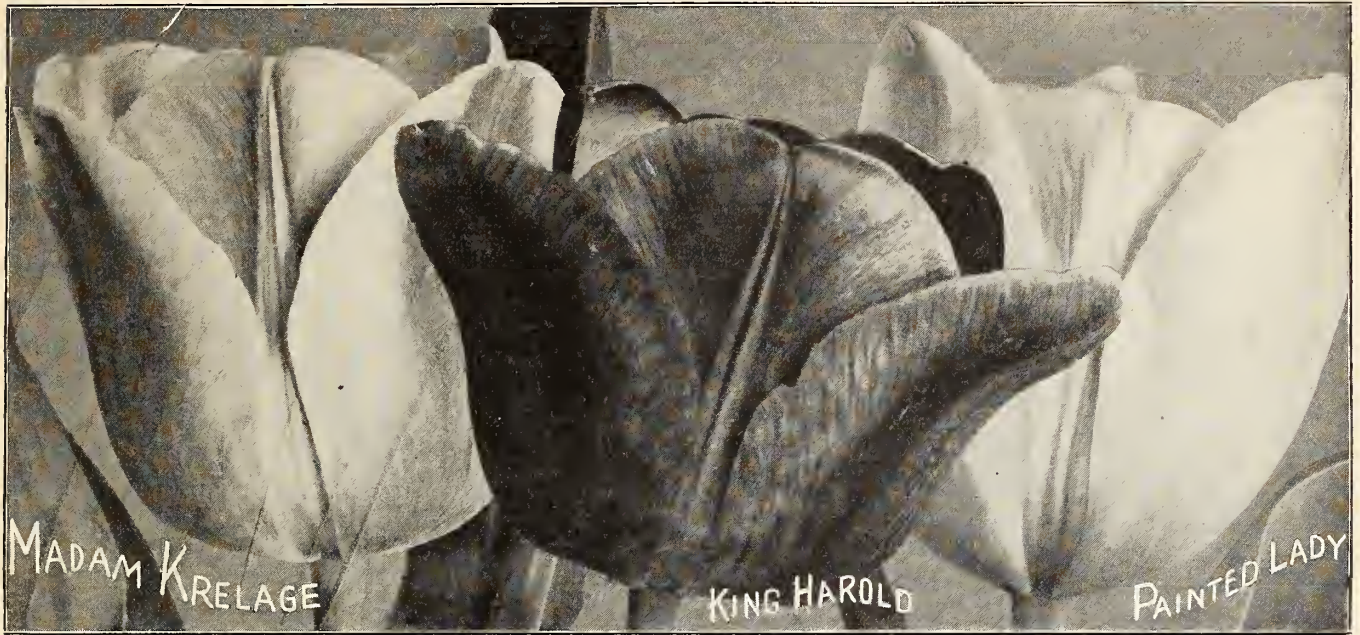
The New Bulb Planter

PETER HENDERSON & CO. 35 Cortlandt Street NEW YORK





# Henderson's Giant Darwin Tulips—the Aristocrats of Tulipdom



A GRAND DISPLAY OF DARWIN TULIPS—The Bulbs Were Supplied by Peter Henderson & Co.

**SPECIAL—Don't Miss This Unusual Offer**

If you send us your order before July 15th, we will deliver at the proper time for planting in the fall, transportation paid, 100 LONG STEMMED MIXED DARWIN TULIPS FOR \$4.00. This collection is made up specially from the finest varieties.

# Henderson's Giant Darwin Tulips—General List

Darwin Tulips are exceedingly effective when grown in groups of a dozen or more bulbs of one variety in the garden or herbaceous border with a background of greenery. As cut flowers they are unsurpassable. They can be successfully flowered in pots or pans in the house in winter if grown cool and not forced into bloom before March. The varieties marked \* are especially good for that purpose.

To aid in making selections of varieties for continuity of bloom, etc., we have indicated their relative time of flowering by the letters E, F, G, H and I. The E's being the earliest to bloom. The height is also given, but may vary. The bulbs should be spaced about 5 inches apart and base of the bulbs should be 5 to 6 inches deep on heavy soils and 6 to 7 inches deep on light soils.

	Per Doz.	Per 100	Per 1000		Per Doz.	Per 100	Per 1000
<b>Afterglow.</b> (F-21 in.) Deep rosy orange, salmon tinted edge. Inside deep orange.....	\$0.70	\$ 5.00	\$47.50	<b>Massachusetts.</b> (F-24 in.) A long-stemmed flower of vivid pink.....	\$0.70	\$ 5.00	\$47.50
* <b>Anton Roozen.</b> (F-24 in.) Large cup-shaped flower of bright rose pink edged with blush-pink strong grower.....	.60	4.75	45.00	<b>Massenet.</b> (G-28 in.) Soft apple blossom, flushed white.....	1.00	7.50	....
<b>Ariadne.</b> (F-28 in.) Glowing rose crimson shaded scarlet.....	.70	5.00	47.50	<b>Mrs. Potter Palmer.</b> (Fashion.) (G-24 in.) A beautiful large variety of deep rich violet-purple	.70	5.00	47.50
* <b>Baronne de la Tonnaye.</b> (F-26 in.) A long and beautiful flower; clear carmine rose at the mid-rib, fading off to soft pink at the edges.....	.60	4.75	45.00	<b>Mystery.</b> (G-22 in.) Shining black, large flower....	1.50	10.00	....
* <b>Bartigon.</b> (F-22 in.) Large flowers of fiery crimson with white base.....	.60	4.75	45.00	<b>Orange Perfection.</b> (F-26 in.) Fiery salmon orange changing with age to scarlet.....	1.75	12.00	....
<b>Bleu Aimable.</b> (F-16 in.) Bright violet-purple, shaded steel-blue, blue base.....	.70	5.00	47.50	* <b>Painted Lady.</b> (H-26 in.) One of the best of the white Darwins.....	.60	4.75	45.00
<b>City of Haarlem.</b> (F-26 in.) Immense vermilion scarlet.....	1.00	7.50	70.00	<b>Ph. de Comminet.</b> (E-24 in.) A grand flower of dark polished mahogany.....	.70	5.00	47.50
* <b>Clara Butt.</b> (G-20 in.) A large flower of remarkable beauty; an exquisite shade of soft salmon pink shaded rose.....	.60	4.75	45.00	<b>President Taft.</b> (G-26 in.) Dark scarlet red, inside lighter.....	1.00	7.50	....
<b>Dream.</b> (F-27 in.) Large cup-shaped flower of heliotrope with silvery lilac margin.....	.60	4.75	45.00	* <b>Pride of Haarlem.</b> (F-26 in.) Magnificent flower of immense size; coloring brilliant salmon rose-shaded with scarlet.....	.60	4.75	45.00
<b>Duke of Portland.</b> (F-26 in.) Brilliant cerise red, extra fine.....	1.00	7.50	....	<b>Prince of the Netherlands.</b> (F-26 in.) Deep cerise rose margined pink, large flower.....	.75	5.50	52.50
<b>Eclipse.</b> (F-25 in.) Dark red, chestnut color.....	2.00	15.00	....	<b>Prince of Wales.</b> (F-26 in.) Dazzling red flower..	.75	5.50	52.50
<b>Farnscomb Sanders.</b> (F-26 in.) Brilliant orange-scarlet, extra fine.....	.60	4.75	45.00	<b>Princess Elizabeth.</b> (E-26 in.) Soft lilac rose, edges of paler shade.....	.60	4.75	45.00
<b>Flemingo.</b> (G-26 in.) Lovely flesh pink, tinted rose; distinct color.....	.70	5.00	47.50	<b>Princess Juliana.</b> (F-28 in.) Dazzling orange-red, flushed salmon.....	1.00	7.50	....
<b>Giant.</b> (E-28 in.) Deep purplish violet.....	1.00	7.50	....	<b>Pulcinella.</b> (F-24 in.) Beautiful bright red.....	1.00	7.50	....
<b>Jacob Maris.</b> (G-28 in.) Maroon, dark center bordered white.....	.75	5.50	....	<b>Rev. H. Ewbank.</b> (F-20 in.) Silvery lavender shading towards the center into bluish-heliotrope.	.60	4.75	45.00
<b>Jubilee.</b> (F-24 in.) Deep rich blue purple, somewhat egg shaped.....	1.10	8.00	....	<b>Sir Trevor Lawrence.</b> (F-28 in.) Reddish violet shaded lilac, enormous flower.....	1.00	7.00	....
<b>King George V.</b> (F-25 in.) Brilliant cherry red, very large flower.....	1.00	7.50	....	<b>Sundew.</b> (F-16 in.) The fringed crimson Darwin	.70	5.00	47.50
* <b>King Harold.</b> (G-24 in.) Large flower, dark glossy blood-red shaded maroon.....	.60	4.75	45.00	<b>The Bishop.</b> (F-27 in.) Pure violet, forcing.....	1.25	9.00	....
<b>La Fiancee.</b> (G-28 in.) Rose shaded mauve, edged light rose.....	.70	5.00	47.50	<b>Viola.</b> (Purple King.) (F-24 in.) Beautiful purplish violet, large flower.....	1.00	7.50	70.00
<b>La Tristesse.</b> (G-26 in.) Bluish slate color, white base; very distinct.....	.75	5.50	....	<b>Whistler.</b> (F-24 in.) Vivid maroon, crimson, edged white, extra large flower.....	.70	5.00	47.50
* <b>La Tulip Noire.</b> (The Black Tulip.) (G-24 in.) The "blackest" of all Tulips; a large broad flower of glossy black; high lights maroon.....	.75	5.50	....	<b>White Queen.</b> (F-24 in.) Pure white faintly flushed with blush in places.....	.70	5.00	47.50
* <b>Madam Krelage.</b> (F-28 in.) A grand flower of purplish rose, broadly margined with blush-pink	.60	4.75	45.00	* <b>William Copeland.</b> (E-26 in.) Delicate lavender. The best early forcing variety.....	.60	4.75	45.00
<b>Mary Eaton.</b> Beautiful sunflower yellow, base and anthers yellow.....	2.00	15.00	....	* <b>William Pitt.</b> (F-26 in.) One of the largest of the Darwins; brilliant carmine, center of petals overspread with dark red.....	.60	4.75	45.00
				* <b>Zulu.</b> (F-26 in.) Flower of rich violet black.....	.70	5.00	47.50
				* <b>Zwanenburg.</b> (F-24 in.) A beautiful pure white variety.....	1.00	7.50	70.00
				<b>Grand Mixture of Darwin Tulips.</b> Great variety of all colors and shades, made up from selected named sorts.....	.55	4.00	37.50

**THE BORDER COLLECTION OF GIANT DARWIN TULIPS—Illustrated on Front Cover.** The varieties are named from the foreground up.

	Per Doz.	Per 100	Per 1000
<b>Baronne de la Tonnaye</b> .....	\$0.60	\$ 4.75	\$45.00
<b>Mrs. Potter Palmer.</b> (Fashion.).....	.70	5.00	47.50
<b>La Fiancee</b> .....	.70	5.00	47.50
<b>Rev. H. Ewbank</b> .....	.60	4.75	45.00
<b>Ph. de Comminet</b> .....	.70	5.00	47.50
<b>Inglescomb Yellow.</b> (The Yellow Darwin.).....	.60	4.75	45.00
<b>King Harold</b> .....	.60	4.75	45.00

**PRICES OF COLLECTIONS**

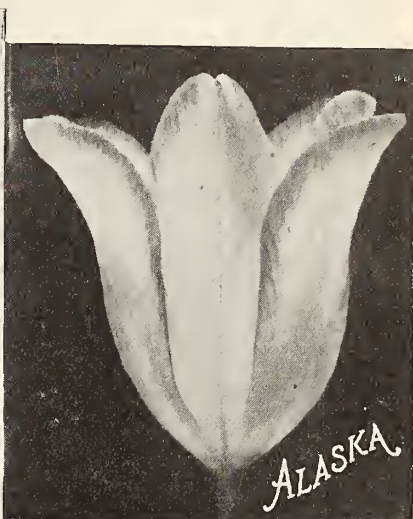
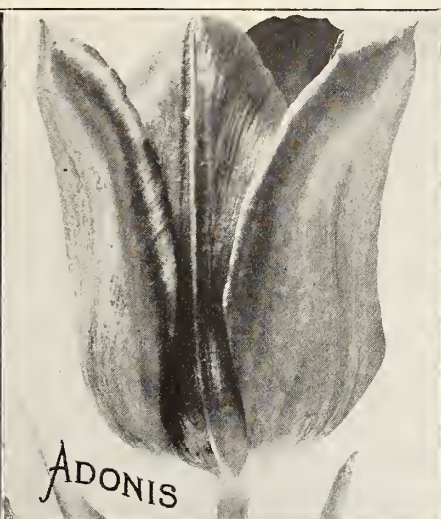
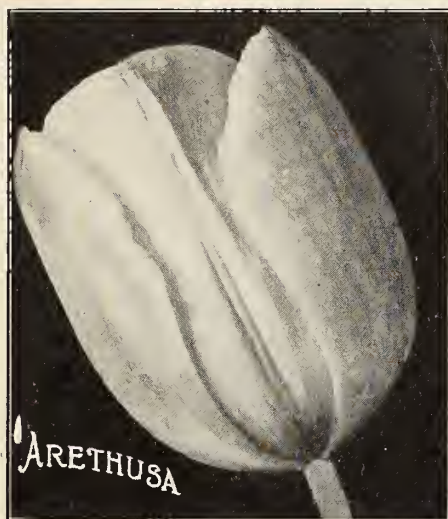
<b>No. 1,</b> 84 Bulbs, 12 each, 7 Varieties.....	\$ 4.00
<b>No. 2,</b> 175 Bulbs, 25 each, 7 Varieties.....	8.00
<b>No. 3,</b> 350 Bulbs, 50 each, 7 Varieties.....	15.00
<b>No. 4,</b> 700 Bulbs, 100 each, 7 Varieties.....	30.00

(See descriptions on pages 2 and 3.)

We will supply individual bulbs of any sort described above at one-tenth of the dozen price. 6 Bulbs of a variety sold at the dozen rate, 25 at the hundred rate.

# COTTAGE TULIPS

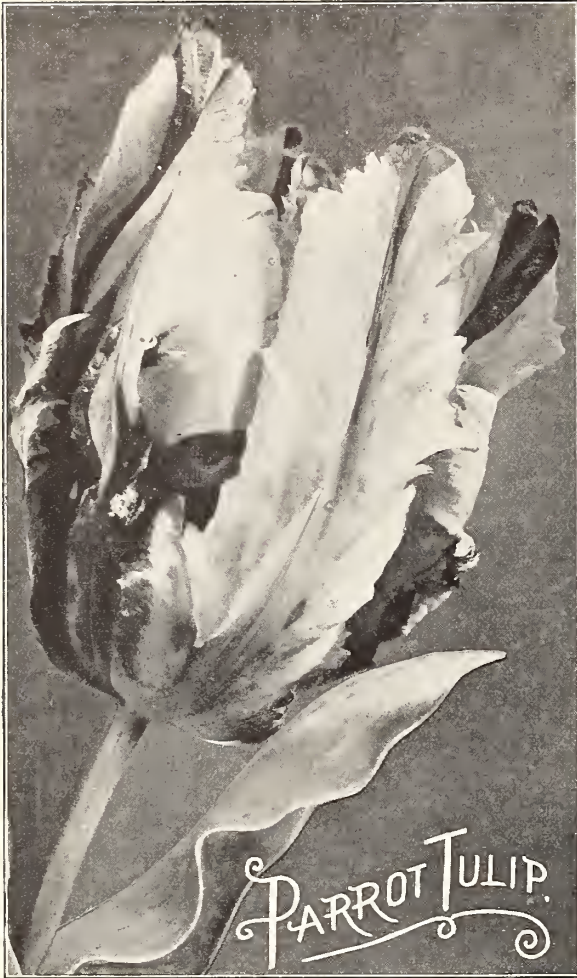
Cottage Tulips are so-called because found growing in the old cottage gardens of England, Scotland, Ireland and France where they had been established for 50 years or more. All are very beautiful, presenting a great variety in form and coloring, and having none of the stiffness of other tulips. For cutting they are greatly prized on account of their long stems and graceful habit. They are specially adapted for hardy flower borders, where they should be planted in large clumps and masses. To aid in making selections for continuity of bloom, etc., the relative time of flowering is indicated by the letters E, F, G, H and I. Those marked E being the earliest. Those marked I are the latest to bloom. The normal height is also given in inches. In planting the bulbs should be placed 5 inches apart and the bottom of the bulb should be 6 to 7 inches below the surface in light soils and 5 to 6 inches deep in heavy soils. If planted too shallow some may come blind. The varieties marked \* are especially good for winter flowering and forcing.



	Per Doz.	Per 100		Per Doz.	Per 100
<b>Adonis.</b> (G-21 in.) ( <i>Lily Flowered.</i> ) Long shapely reflexed petals, bright and vivid, rosy carmine red, white base. (See illustration.)	\$1.00	\$ 7.00	<b>*Inglescomb Yellow.</b> (H-18 in.) Flower of perfect form; color full rich yellow. ( <i>The Yellow Darwin.</i> ) \$45 per 1000	\$0.60	\$ 4.75
<b>Alaska.</b> (H-21 in.) A beautiful, large elongated flower with pointed petals of a golden yellow. (See illustration)	1.00	7.50	<b>John Ruskin.</b> (G-18 in.) A large flower of apricot pink with a border of canary yellow, beautiful and rare	.70	5.00
<b>Amber.</b> (F-18 in.) An excellent round flower of unique coloring, terra cotta, shaded amber, base yellow and blue	.75	5.50	<b>La Reve.</b> (E-12 in.) ( <i>Hobbema.</i> ) Large globular flower of an exquisite art coloring, soft rose, apricot and chamois glow	.70	5.00
<b>Ambrosia.</b> (G-26 in.) A beautiful new variety, color lilac rose, inside salmon orange	1.00	7.00	<b>Marvel.</b> (G-24 in.) A fine sort, salmon rose edged yellow inside old gold	.70	5.00
<b>Arethusa.</b> (H-28 in.) A fine variety of a soft pale yellow large flower on a strong stem and the best yellow. (See illustration.)	1.00	7.50	<b>*Miss Wilmott.</b> (H-18 in.) Splendid large, long flowers on straight tall stems; primrose yellow, but soon assumes a bright yellow color	.75	5.50
<b>Argo.</b> (F-26 in.) A unique color, golden yellow spotted orange.	1.00	7.00	<b>*Mrs. Moon.</b> (H-24 in.) A magnificent and immense tulip of rich orange yellow, a famous Parisian boulevard tulip	.70	5.00
<b>*Bouton d'Or.</b> (F-17 in.) Rich deep golden yellow; a large, long-stemmed, globular flower of finest substance; unequalled for cutting and fine for late forcing	.70	5.00	<b>Moonlight.</b> (E-24 in.) A beautiful elongated flower, color sulphur yellow. \$60.00 per 1000	.70	5.00
<b>Carrara.</b> (F-24 in.) Pure white with faint gray markings at base of petal, good form and substance	1.25	9.00	<b>Orient.</b> (G-26 in.) Carmine-rose, orange toward edges, inside salmon rose	1.00	7.00
<b>Cocarde.</b> (F-28 in.) Dazzling red, purplish blue base, handsome flower and one of the best of the new varieties	1.25	9.00	<b>Parlsian Yellow.</b> (I-20 in.) ( <i>Annie.</i> ) Large handsome clear yellow flowers with pointed petals	.85	6.50
<b>Dido.</b> (G-26 in.) Orange red changing to orange yellow, inside orange	.75	5.50	<b>Picotee.</b> (G-20 in.) ( <i>Maiden's Blush.</i> ) An elegant flower with recurved petals, pure white with a picotee margin of rose-pink	.60	4.75
<b>Dulcinea.</b> (F-21 in.) A fine vivid red, inside glowing orange red, excellent for forcing	.70	5.00	<b>Pride of Inglescomb.</b> (F-24 in.) Beautiful long pointed flowers, white edged carmine rose	.85	6.50
<b>Elegans Alba.</b> ( <i>White Crown.</i> ) (F-20 in.) Large reflexing flower of white with a sharply defined-margin of carmine-rose	1.35	10.00	<b>Rosabella.</b> (G-26 in.) Beautiful shade of soft rose pink turning lighter towards the edges	1.00	7.00
<b>Elegans Red.</b> (E-14 in.) Brilliant vermilion with yellow center; a long flower with reflexing petals	1.00	7.50	<b>Scarlet Emperor.</b> (G-21 in.) Glowing scarlet, clear yellow center, extra	1.25	9.00
<b>*Fairy Queen.</b> (G-20 in.) A very large and beautiful flower of rosy heliotrope, broadly margined with yellow	.60	4.75	<b>Siren.</b> (F-21 in.) ( <i>Lily Flowered.</i> ) Rich cerise pink, reflexed petals	.70	5.00
<b>Fawn.</b> (H-21 in.) Fawn tinged yellow with silvery dove gray; large	.60	4.75	<b>Sir Harry.</b> (G-20 in.) Beautiful lavender pink	1.10	8.00
<b>Flava.</b> (H-22 in.) Creamy yellow, large flower on stiff stem, good for mixing with Darwins	1.25	9.00	<b>Striped Beauty.</b> (I-20 in.) ( <i>Summer Beauty.</i> ) Rose flaked crimson and white; large and showy flowers on tall stems	1.25	9.00
<b>*Fulgens Red.</b> (F-24 in.) Long reflexing petals of glowing vermilion, creamy-white center	1.00	7.00	<b>Triton.</b> (G-18 in.) A long shaped flower of dazzling carmine, base pure yellow with blue edge	.70	5.00
<b>Gesneriana Major.</b> (G-24 in.) Crimson scarlet with violet black center, large flowers, effective for beds and borders	1.00	7.50	<b>*Vitellina.</b> (G-22 in.) Large canary yellow flowers of exquisite beauty	1.00	7.50
<b>Gesneriana Lutea.</b> (H-24 in.) Finely formed flower of full rich yellow	.60	4.75	<b>Grand Mixture of Old English Cottage Tulips.</b> Many different varieties. Per 1000, \$37.50	.55	4.00
<b>Inglescomb Pink.</b> (F-24 in.) ( <i>Salmon Queen.</i> ) Beautiful large egg-formed flowers of bright rose-pink with a salmon sheen	.60	4.75			
<b>Inglescomb Scarlet.</b> (H-20 in.) Brilliant vermilion with a black base	.70	5.00			

We can supply individual bulbs of any of the sorts described above at one-tenth of the dozen price.

Six Bulbs of a Variety Sold at the Dozen Rate, 25 at the Hundred Rate



### PARROT OR DRAGON TULIPS

**Fantasy.** This recent product of the tulip breeder's art originated as a sport from Clara Butt, the well known Darwin tulip. Clara Butt is esteemed for its beautiful salmon pink color; and this sport Fantasy has inherited the same glorious color except that the inside of the flower is more intense in color; the height is 20 inches. Each petal besides being elaborately lacinated is marked very distinctly in the center with a streak of apple-green. This variety is also suitable for growing in pots or pans of soil in the window, attracting great attention wherever exhibited. (See colored plate, first page of cover.) Price: 12c each; \$1.35 per doz.; \$10.00 per 100.

**PRICES OF NAMED SORTS MENTIONED BELOW.**

- 75c per doz.; \$5.50 per 100.
- Admiral de Constantinople.** Red tipped orange.
- Lutea Major.** Bright yellow.
- Monstre Cramoise.** Deep crimson, black center.
- Perfecta.** Yellow striped red.
- Markgraff von Baden.** Yellow, scarlet and green.

**CHOICE MIXED VARIETIES.** 70c per doz.; \$5.00 per 100; \$45.00 per 1000.

### OLD DUTCH BREEDER TULIPS

The vogue for this glorious type of the large late May flowering tulips is gaining great impetus through the introduction of many of the exquisite new varieties described in the list below. To aid in making selection of varieties for continuity of bloom, etc., we have indicated their relative time of flowering by the letters E, F, G, H and I. The E's being the earliest to bloom. The varieties marked \* are especially good for winter flowering and forcing. The height is also given but may vary. The bulbs should be spaced about 5 inches apart and base of the bulbs should be 5 to 6 in. deep on heavy soils and 6 to 7 inches deep on light soils. (See illustration)

	Per Doz.	Per 100
<b>Alice.</b> (G-22 in.) Deep Havana brown, finely shaped flower.....	\$1.00	\$ 7.50
<b>Apricot.</b> (G-25 in.) Deep orange-bronze suffused with ruddy apricot.....	.85	6.50
<b>Bronze Queen.</b> (G-26 in.) Soft buff tinged with golden bronze.....	.75	5.50
<b>Cardinal Manning.</b> (G-28 in.) Claret-red with rosy bronze sheen.....	.75	5.50
<b>Coridon.</b> (G-24 in.) Clear yellow with lilac stripe through center of petals.....	1.35	10.00
<b>Dom Pedro.</b> (G-24 in.) Brown shaded maroon, fragrant.....	.85	6.50
<b>Heloise.</b> (G-25 in.) Purplish red, with yellow center, edge olive....	1.00	7.50
<b>Indian Chief.</b> (G-32 in.) Beautiful large flower, reddish purple flushed coppery-brown.....	1.35	10.00
<b>Jaune d'Oeuf.</b> (Sunrise.) (H-24 in.) Bronzy yellow-tinged orange..	.75	5.50
<b>Louis XIV.</b> (G-27 in.) Dark purple, flushed golden bronze. Very striking.....	.85	6.50
<b>Lucifer.</b> (G-27 in.) Large reddish orange, a fine large flower.....	.85	6.50
<b>Marie Louise.</b> (G-23 in.) Very beautiful; old rose flushed orange-salmon.....	.85	6.50
<b>Medea.</b> (G-27 in.) Very beautiful orange-red.....	.85	6.50
<b>Plutarchus.</b> (G-25 in.) Bronze, shaded lilac.....	.75	5.50
<b>Prince of Orange.</b> (G-26 in.) Terra-cotta with orange edge.....	.85	6.50
<b>Vulcan.</b> (G-25 in.) Strawberry red with buff; yellow margin, inside apricot shade.....	1.00	7.00
<b>Yellow Perfection.</b> (F-24 in.) Bright bronzy-yellow; large flower..	.75	5.50
<b>Breeder Tulips Mixed from Named Varieties,</b> \$37.50 per 1000..	.55	4.00

### BYBLOEMEN TULIPS

The "Rose" Bybloemen tulips are those marked with crimson, rose, pink and scarlet on a white ground, and the "Violet" Bybloemen are those marked with blue, purple and violet also on a white ground. They flower at the same time as the Darwin and Breeder varieties, and the culture is the same.

- Rose Bybloemen Tulips, Choice Mixed Varieties, \$1.00 per doz.;**
- \$7.50 per 100.**
- Violet Bybloemen Tulips, Choice Mixed Varieties, \$1.00 per doz.;**
- \$7.50 per 100.**

### REMBRANDT TULIPS

These late or May-flowering garden tulips form a new class of stately beauty. They are in reality Darwin tulips which have "broken" into permanent variegations—the flowers of various rich colors being striped, blotched and marked with different shades and colors. The flowers, large, of perfect form and lasting substance, are borne on sturdy stems about two feet in height. These Rembrandts are very effective planted in groups in the herbaceous or shrubby border and will remain 3 or 4 years without replanting.

**Choice Mixed Varieties**..... 85c per doz \$6.50 per 100

### BIZARRE TULIPS

One of the oldest races of tulips grown extensively in Europe during the seventeenth century. It is this class that is credited as being responsible for the famous tulip craze in 1635. Bizarre tulips are all queerly striped and variegated; they belong to the May flowering group, and flower on tall stems.

**Choice Mixed Varieties.** Yellow ground colors, variegated with crimson, purple, lips..... 85c per doz.; \$6.50 per 100

We can supply individual bulbs of varieties described above at one-tenth of the dozen price.



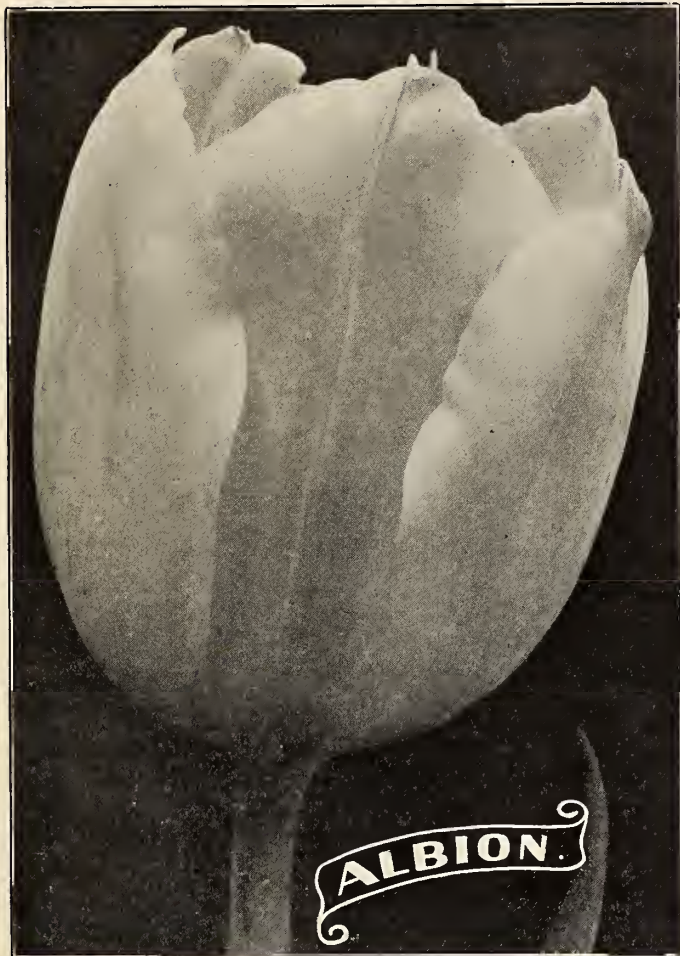
Old Dutch Breeder Tulips



HENDERSON'S SUPERIOR

Single Early Tulips Named Varieties

The letters A, B, C, etc., following the varieties indicate their earliness of bloom, the A's flower together and are the earliest, B's follow before the A's are out of bloom. The height is indicated in inches to aid in arranging flower beds. When bedded it is generally advisable to use only one variety to a bed for best effect. The bulbs are planted 5 to 6 inches part—and the depth should be according to the soil, in heavy soils 3 to 4 inches to the base of the bulbs and in light soils an inch or so deeper. Instructions for forcing in pots for Winter blooming will be found in our leaflet "How to Grow Bulbs" sent free with every order.



Botanical Tulips and Species for Rockeries, Pools, etc.

Every rock garden should have a planting of these. They are natives of Asia and Asia Minor and produce beautiful flowers of various shapes and colorings. Plant in clusters of six or more bulbs, placing them two to three inches apart in well-drained pockets where they can remain indefinitely.

	Per Doz.	Per 100
<b>Tulip Clusiana.</b> The Little Lady Tulip. A beautiful dwarf variety suitable for perennial borders and rockeries. Should be planted two inches apart each way. Color, white with cherry stripes.....	\$0.85	\$ 6.50
<b>Echleri.</b> A grand variety from Turkestan, producing immense flowers of crimson scarlet with black center marked with gold. Height, 11 inches.....	1.00	7.50
<b>Florentine Odorata.</b> ( <i>Sylvestris</i> .) The sweet scented wild, pure yellow tulip.....	1.00	7.50
<b>Grelgii.</b> Beautiful large flowers; color, vermilion-scarlet, center marron, black blotches; foliage, spotted dark brown. Height 9 inches. Each, 40c.....	4.00	30.00
<b>Kaufmanniana.</b> ( <i>Water Lily Tulip</i> .) A fine sort from Central Asia. Large, broad, reflexing petals; creamy white with carmine-red on the reverse, center golden yellow. Height, 6 inches	1.35	10.00
<b>Oculus Solis.</b> ( <i>Sun Eye Tulip</i> .) Large crimson flowers with black center. Height, 12 inches.....	1.25	9.00



Tulip Clusiana and other varieties for Rock Gardens, &c., &c.

	Per Doz.	Per 100
<b>Alblon</b> ( <i>White Hawk</i> ). (C-12 in.) Very large snow-white flowers; one of the finest whites for either bedding or forcing. ( <i>See illustration</i> ).....	\$0.75	\$ 5.50
<b>Apollo.</b> (B-16 in.) A magnificent new variety; flowers of dark blood red.....	1.00	7.50
<b>Belle Alliance</b> ( <i>Waterloo</i> ). (B-10 in.) Brilliant large flower. Crimson scarlet.....	.70	5.00
<b>Brilliant Star.</b> (A-12 in.) Rich dazzling scarlet flowers with bronze center.....	.70	5.00
<b>Cardinal Rampollo.</b> (B-11 in.) A fine large flower of yellow bordered with orange, a striking combination.....	1.00	7.00
<b>Chrysolora.</b> (S-12 in.) Pure golden yellow, large handsome flower; one of the best for bedding.....	.70	5.00
<b>Couleur Cardinal.</b> (D-12 in.) Brilliant crimson flower of great substance.....	.70	5.00
<b>Cramoise Brilliant.</b> (C-12 in.) Brilliant vermilion scarlet, large flower.....	.70	5.00
<b>De Wet</b> ( <i>Fireglow</i> ). (B-12 in.) A new variety of remarkable beauty. Golden yellow flushed and stippled fiery orange-scarlet, the brightest bedding variety.....	.75	5.50
<b>Duchess de Parma.</b> (C-15 in.) Orange scarlet with yellow edge, very large fine flower.....	.75	5.50
<b>Fred Moore.</b> (C-15 in.) Orange, sweet scented.....	.70	5.00
<b>Gold Finch.</b> (B-12 in.) Pure rich yellow. This holds its color to the last, splendid bedder.....	.75	5.50
<b>Ibis.</b> (B-12 in.) New distinct variety. Magnificent flowers of a deep brilliant pink, shaded carmine, good forcer..	.70	5.00
<b>Joost von Vondel.</b> (B-12 in.) Deep cherry red, feathered white center.....	.75	5.50
<b>Joost von Vondel, White.</b> ( <i>Lady Boreel</i> .) (B-12 in.) Purest white, large flower of finest form; the finest white..	.80	6.00
<b>Kaiser Kroon.</b> (B-15 in.) Crimson scarlet, with broad yellow margin; large and effective bedder.....	1.00	7.00
<b>Max Havelaar.</b> (B-12 in.) An exquisite variety, color blood-orange flushed salmon-rose.....	.70	5.00
<b>Mon Tresor.</b> (B-12 in.) Rich deep yellow, extra large and finely formed flower; splendid bedded or forced....	1.00	7.00
<b>Pink Beauty.</b> (B-12 in.) A large cup-shaped flower of brilliant orange rose and pink with yellow throat.....	1.00	7.00
<b>Prince of Austria.</b> (C-14 in.) Glittering copper red, large long stemmed flower; very attractive.....	.70	5.00
<b>Proserpine.</b> (B-13 in.) Carmine rose, rich, beautifully shaped large flowers.....	.70	5.00
<b>Queen of Violets.</b> ( <i>President Lincoln</i> .) (B-12 in.) Large flower of purplish violet.....	.70	5.00
<b>Rising Sun.</b> (B-15 in.) Beautiful, large, well-formed flowers, rich deep canary yellow; a fine forcing variety..	.70	5.00
<b>Rose Luisante.</b> (C-10 in.) Brilliant rose-pink flowers, outside flushed white; fine bedder and forcer.....	.70	5.00
<b>Van Der Neer.</b> (B-12 in.) Handsome violet-purple blooms; good forcer.....	.70	5.00
<b>Vermilion Brilliant.</b> (C-10 in.) Vermilion scarlet....	.70	5.00
<b>White Swan</b> (D-15 in.) Large, pure white flowers....	.70	5.00
<b>Wouverman</b> (C-11 in.) Rich claret purple, beautiful distinct color.....	.75	5.50

HENDERSON'S SPECIAL RAINBOW MIXTURE OF ABOVE

This is a very superior mixture made up from Named Sorts with proper proportions of bright colors, extra fine bulbs. Price: 60c per doz.; \$4.50 per 100; \$40.00 per 1000.

We can supply individual bulbs of any of the sorts described at one-tenth of the dozen price. Six bulbs of a variety sold at the dozen rate, 25 at the hundred rate.

HENDERSON'S BULB CULTURE

New and Enlarged Edition, Price, 75 cents 68 pages, size 7½ x 9½ Ins. 32 pages of illustrations

GIVEN FREE

If asked for with orders for not less than \$3.00 worth of Bulbs.

# HENDERSON'S SUPERIOR DOUBLE EARLY TULIPS

Named Varieties including some Beautiful Novelties

The letter A, B, C, etc., following the varieties indicate their earliness of bloom, the A's flower together and are the earliest; B's follow before the A's are out of bloom, etc. The height is indicated in inches to aid in arranging flower beds. When bedded it is generally advisable to use only one variety to a bed for best effect. The bulbs are planted 5 to 6 inches apart—and the depth should be according to the soil, in heavy soils 3 to 4 inches to the base of the bulbs and in light soils an inch or so deeper. Instructions for forcing in pots for winter blooming will be found in our leaflet "How to Grow Bulbs" sent free with every order.

	Per Doz.	Per 100		Per Doz.	Per 100
<b>Boule de Neige.</b> (B-10 in.) Magnificent large peony-like flowers of pure white; forces splendidly.....	\$1.00	\$7.00	<b>Lac Van Haarlem.</b> (C-12 in.) A large, very double tulip of conspicuous rosy violet; a brilliant and unique shade.....	1.00	7.00
<b>Crown of Gold.</b> (B-10 in.) ( <i>Couronne d'Or.</i> ) Large flower, very double, rich golden-yellow, orange. A fine garden tulip and one of the best double yellows for winter forcing ( <i>see illustration</i> )	.85	6.50	<b>Mount Tacoma.</b> (B-12 in.) Large double tulip of the purest white, good bedder.....	1.50	12.00
<b>Golden Giant.</b> (B-12 in.) Largest and finest double golden yellow.....	1.50	12.00	<b>Mr. Van Tubergen.</b> (B-10 in.) Beautiful strong full double flowers, color golden yellow.....	.85	6.50
<b>Imperator Rubrorum.</b> (B-12 in.) Splendid bright scarlet, yellow base, a fine full double. A fine tulip for bedding and the finest of all double scarlets for forcing for winter flowers..	.75	5.50	<b>Murillo.</b> ( <i>Albino.</i> ) (B-10 in.) Magnificent bluish white, shaded, rose, large full double flowers; the finest double light pink for garden beds and unrivalled for winter flowering, forcing very easily.....	.70	5.00
<b>La Matador.</b> (C-12 in.) A grand large double tulip of glowing scarlet.....	.85	6.50	<b>Mystery of India.</b> (B-12 in.) Terra cotta and orange, shaded pink, very large.....	1.00	7.50
			<b>Orange Nassau.</b> (B-10 in.) Very showy orange-red, unique color.....	.85	6.50
			<b>Rubra Maxima.</b> (B-10 in.) Dark, dazzling carmine scarlet, lower half outer petals flamed with green.....	.70	5.00
			<b>Safrano.</b> ( <i>Sulphur Beauty, Brimstone or Tea Rose.</i> ) (B-12 in.) A beautiful new large flowering double tulip, opening pale yellow flushed salmon, but developing a rosy apricot color.....	.70	5.00
			<b>Salvator Rosa.</b> (B-12 in.) Beautiful deep rose flamed with blush; a fine large double flower suitable for either gardens or forcing.....	.70	5.00
			<b>Schoonord.</b> (B-12 in.) A beautiful large double snow-white sport of Murillo. The best double white.....	1.00	7.50
			<b>Titian.</b> (C-12 in.) Rich deep scarlet with a golden edge....	.85	6.50
			<b>Toreador.</b> (B-10 in.) Reddish-orange with rich yellow border; a splendid large, very double flower.....	.75	5.50
			<b>Tournesol.</b> (B-10 in.) Splendid showy tulip, bright scarlet with broad yellow tips and yellow base. The easiest double tulip to force.....	.85	6.50
			<b>Triumphator.</b> (B-12 in.) Beautiful rosy pink, good for forcing.....	.75	5.50
			<b>Vuurbaak.</b> (B-11 in.) Fiery orange-scarlet, very brilliant and handsome.....	.70	5.00



Send for quotations on larger quantities.

## Henderson's Special—Rainbow Mixture of Double Early Tulips

Mixed by ourselves from named sorts, proper portions of bright colors, all blooming together and of uniform height; extra fine bulbs, much superior to the ordinary mixtures, which are too often made up of surplus varieties and seconds regardless of bedding effect. Price: 60c per doz.; \$4.50 per 100; \$40.00 per 1000. 250 sold at the 1000 rate.

We can supply individual bulbs of any of the sorts described at one-tenth of the dozen price.

Six Bulbs of a Variety Sold at the Dozen Rate 25 at the Hundred Rate.

# HENDERSON'S EXHIBITION HYACINTHS



Exhibition  
Hyacinth  
"Top Roots"

## Single Belled Varieties—"Top Roots"

PRICE, 25c EACH, \$2.25 PER DOZEN, \$16.00 per 100

- Arentine Arendsen.** A new early snow-white variety; large broad petalled bells and splendid erect spike.
- Bismarck.** A grand new variety producing a large spike well furnished with immense bells of charming light blue shaded with violet; very early.
- City of Haarlem.** The best and largest yellow; splendid well-filled tall spike; good bells of bright buttercup yellow.
- Enchantress.** Large pure "baby blue" bells compactly filling the tall handsome well-rounded spike.
- General De Wet.** A pink sport of Grand Maitre, usually throwing two or more strong well-filled spikes. Color, lively pink with a white throat.
- Hofgaertner Kunert.** Exquisite soft pink and blush; large bells and truss.
- Ivanhoe.** Glossy purplish indigo with a white throat, tall spike and large bells.
- Jacques.** This beautiful hyacinth is known in our trial grounds as "The Big Pink," the spike being very large, tall and well-filled with very large bells of an exquisite shade of warm rose-pink.
- Lady Derby.** Unusually large thick waxy bells of the loveliest shade of rose-pink; spike ideal, strong, tall and well-filled.
- Lord Balfour.** Enormously large broad spike of waxy bells; coloring attractive and unique; claret-purple edged reddish mauve.
- Menelik.** The darkest of all hyacinths, being almost black; the best and most brilliant of its color; fine large truss.
- Perle Brillante.** Splendid large spike of big waxy bells; color sparkling lavender with outside tints of ultramarine blue.
- Queen of Whites.** Large waxy bells of purest white; tall full truss perfect form.
- Queen Wilhelmina.** A very pleasing shade of vivid pink, large, sturdy, well-formed truss and fine bells; early.
- Ruby.** Brilliant ruby-red bells on a tall spike well filled, very distinct.
- COLLECTION A. 1 EACH OF THE ABOVE 15 SINGLE BELLED VARIETIES..... \$2.75**

## Double Belled Varieties—"Top Roots"

PRICE, 25c EACH, \$2.25 PER DOZEN, \$16.00 PER 100

- Chestnut Blossom.** Exquisite blush pink, shading to deeper rose-pink; bells very large and forming a large fine spike.
- Delicate.** Exquisite porcelain bells touched with light blue, bells very large and double spike fine.
- Edison.** Splendid large, double bells of rosy flesh color; fine tall spike.
- Grande.** An extra fine variety, beautiful large double bells of pure white; grand spike.
- General Kohler.** Very large double bells of deep, bright blue, on a tall spike.
- Princess Metternich.** Very large double bells of rosy white, tall erect, well-filled spike.
- President Roosevelt.** A fine new variety producing large double bells on a big compactly filled spike, color lively rose-pink.
- Sir Rowland Hill.** The best double yellow, really fine double bells of bright rich yellow, good full spike.
- COLLECTION B. 1 EACH OF THE ABOVE 8 DOUBLED BELLED VARIETIES..... \$1.50**

## NAMED HYACINTHS—Double Dutch

All Select First Size Bulbs, not "Seconds" that may be sold at a lower price.

Double Hyacinths are not as popular as the single-belled varieties; for as a class the "doubles," although their individual bells are large and beautiful, do not make as well-filled trusses. For this reason we confine our list of varieties to a few of the very best.

PRICE, 18c EACH, \$1.75 PER DOZEN, \$14.00 PER 100.

### DOUBLE RED ROSE AND PINK

- Groot Voorst,** large very double bells of blush pink with darker center; good spike.
- Noble par Merite,** deep pink, very large fine double bells, tall spike; good forcer.

### DOUBLE WHITE AND TINTED

- Isabella,** white suffused with rosy blush, enormous double bells and large well-filled spike
- Bouquet Royal.** an old favorite early variety and still hard to beat; double pure white bell on tall spike.

### DOUBLE LAVENDER, BLUE AND PURPLE

- Blocksberg,** light blue shaded darker blue; double bells on tall spike.
- Garrick,** lavender tinted blue; fine compact spike of double bells.

### DOUBLE YELLOW AND ORANGE

- Goethe,** a popular old variety salmon yellow with pinkish center; double bells and good spike.
- Sunflower.** Splendid deep-buff-yellow.

## Hyacinth Glasses

Hyacinths grown in glasses of water are charming ornaments for parlor windows, and the ease and success in flowering bulbs in this way add greatly to their popularity. Furnished in the following colors: green, blue, amber or crystal, 30c each; \$3.00 per doz. (See illustration.) (Not available. Shipped by express at customer's expense.)



Six Bulbs of a Variety Sold at the Dozen Rate, 25 at the Hundred Rate

## HENDERSON'S "SPECIAL" HYACINTHS

For Bedding or Pot Culture without names  
— Cheaper than Named Varieties —  
Far Better than Mixed

They are the same age as the first size Named Hyacinth offered by us from which these are the second selection. They are of great value for bedding in designs, enabling one to obtain the exact color effect desired. In beds, borders, etc., set the bulbs 5 to 6 inches apart and 4 inches deep. (See *Bulb Circular for Cultivation*. Sent Free.)

Plant 1 bulb in a 5-in. pot, 3 bulbs in a 6- or 7-in. pot, 6 or 7 bulbs in an 8-in. pot or pan.

PRICE, 12c EACH; \$1.35 PER DOZ.; \$10.00 PER HUNDRED

## SINGLE SPECIAL—

Crimson  
Rose Pink  
Snow White  
Lavender Blue  
Dark Blue  
Yellow  
Mixed Colors

## DOUBLE SPECIAL—

Pink  
Snow White  
Lavender Blue  
Dark Blue  
Yellow  
Mixed Colors

## DUTCH ROMAN HYACINTHS

The smaller or three-year-old bulbs of some varieties of Dutch Hyacinths produce, considering their size, beautiful spikes of bloom, not as large nor furnished with as many bells as older full-sized bulbs but still so satisfactory for their low price that they are extensively grown for winter flowers, forced either in "flats" pans or pots. (See *Bulb Circular for Cultivation*. Sent Free.)

Crimson, Rose, Pink, White, Light Blue, Deep Blue,  
Mixed Colors

Price, 8c each; 80c per doz.; \$6.00 per 100

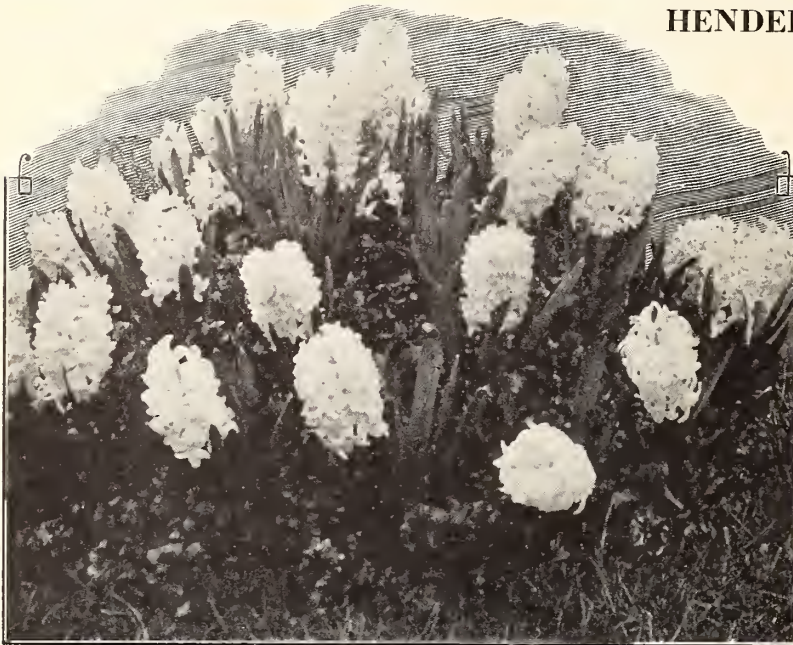
## EARLY ROMAN HYACINTHS

Roman Hyacinths are extensively used for "forcing" for cut flowers. The white Roman Hyacinth is the earliest, best and most floriferous variety, though the pink, and light blue are very beautiful and supply a variation of color. (See *Bulb Circular for Cultivation*.)

**Early White Roman**, extra size bulbs, 12c each; \$1.35 per doz.; \$10.00 per 100.

**Early Pink Roman**, first size bulbs, 12c each; \$1.35 per doz.; \$10.00 per 100.

**Early Light Blue Roman**, first size bulbs, 12c each; \$1.35 per doz.; \$10.00 per 100.



A Small Bed of Named Hyacinths

## NAMED HYACINTHS—Single Dutch

All "Select First Size Bulbs"—Not "Seconds" that are offered at lower prices

For bedding purposes varieties that flower at the same time must be selected. Varieties prefixed with a \* are especially suited for bedding as well as for pot culture. (See illustration.)

Price, 18c EACH; \$1.75 DOZEN; \$14.00 per HUNDRED

Six Bulbs of a Variety Sold at the Dozen Rate, 25 at the Hundred Rate

## SINGLE PURE WHITE

**La Grandesse**, purest snow-white, tall well furnished spike of large bells always admired.

**L'Innocence**, a very fine, pure white, spike massive; bells large.

## SINGLE BLUSH WHITE

**General Vetter**, large spike of waxy bells of a pleasing blush white.

**Mr. Plimsol**, a fine variety with large bells of blush white; large broad spike

## SINGLE DARK ROSE AND CRIMSON

\***Garibaldi**, rich glossy crimson, splendid spike, well furnished with good sized bells; early and a fine forcer.

\***Gertrude**, bright carmine rose; fine, compact, upright spike, excellent for either bedding or forcing.

\***King of the Belgians**, (Roi des Belges) brilliant blood scarlet; fine, upright spike, splendid bedder.

## SINGLE PINK

\***Gigantea**, a popular variety, a fine forcer; color blush pink shaded darker; spike large and compact.

**Moreno**, bright pink, large bells and tall well-filled spike, splendid for bedding and forcing.

## SINGLE DARK BLUE AND PURPLE

\***King of Blues**, dark glossy indigo blue, fine bells, compactly furnishing a tall well-rounded spike.

\***Marle**, dark violet blue large well-formed spike, good bedder.

## SINGLE LAVENDER AND LIGHT BLUE

\***Grand Maltre**, deep lavender blue with darker blue shading very large and handsome spike.

\***Johan**, beautiful silvery lavender tinged with rosy lavender; very large waxy bells and a grand broad spike.

\***Queen of the Blues**, beautiful sky blue with a silvery sheen; large well topped full spike; not early but grand.

## SINGLE YELLOW AND ORANGE

\***King of Yellows**, rich deep yellow; tall handsome spike of large bells; not early.

**Marchioness of Lorne**, rosy salmon.



## HENDERSON'S BULB CULTURE

New and Enlarged Edition, Price, 75 cents

GIVEN FREE If asked for with orders for not less than \$3.00 worth of Bulbs.

## American Grown Narcissus Daffodils and Jonquils

Among spring flowering bulbous plants the Narcissus family is one of the most important and of world-wide popularity. With the exception of the Polyanthus varieties (offered on page 11) all are hardy, grow, increase and flower year after year. As cut flowers Narcissus are especially useful.

*NOTE*—The "perianth" is the surrounding row of petals or wings. The trumpet "crown" or "cup" is the center portion of the flower.



Mme. De Graaff



Upper Flower—G. H. Van Waveren. Lower—Empress

### All Yellow Single Trumpet

	Each	Per Doz.	Per 100
<b>Emperor.</b> Color richest yellow, both trumpet and perianth. A popular variety for borders and forcing; height, 20 inches. . . . . \$70.00 per 1000	\$0.10	\$1.00	\$7.50
<b>G. H. Van Waveren.</b> One of the latest introductions, bold gorgeous all yellow flowers with a gold dust shimmering in the texture; height, 18 inches. (See engraving.) . . . . .	.30	3.00	22.50
<b>Golden Spur.</b> One of the grandest yellow Daffodils of unusually robust habit, unsurpassed for gardens, pots or forcing. Early and extremely free flowering; height, 18 inches. \$70.00 per 1000	.10	1.00	7.50
<b>King Alfred.</b> The largest and finest pure yellow Daffodil in commerce; immense flowers of intense yellow; trumpet large and open with a deeply filled mouth; vigorous and free; height, 20 inches . . . . .	.15	1.50	12.00
<b>Olympia.</b> A much improved and enlarged Emperor, very free-flowering and exceptionally hardy. This is also ranked as a leading cut-flower variety. Height, 16 inches. . . . .	.15	1.50	12.00
<b>Sir Francis Drake.</b> Clear yellow, large, very early, long stemmed cut flower and show variety, also a fine bedding sort; height, 18 inches. . . . .	.15	1.50	12.00
<b>Van Waveren's Giant.</b> Perianth primrose, bright yellow trumpet, one of the best in our "Giant" class; height, 20 inches. . . . .	.20	2.00	15.00
<b>Whistler.</b> Superb golden yellow flowers of marvelous size. Height, 18 inches. (See last page of cover.) . . . . .	.25	2.50	18.00

### Bicolor Single Trumpet

<b>Aeolus.</b> A giant exhibition variety, we consider this the most perfect bicolor in existence, perianth snow white, trumpet yellow with beautiful frilled and recurved brim; height, 16 inches. . . . .	\$0.25	\$2.50	\$18.00
<b>Empress.</b> The perianth is white, and the trumpet rich yellow; the entire flower is of great substance and is carried on strong stems 20 inches high. (See engraving.) . . . . . \$70.00 per 1000	.10	1.00	7.50
<b>Glorv of Sassenheim.</b> A grand large bi-color, trumpet rich yellow with pure white perianth, free flowering and fine for forcing; height, 18 inches. . . . .	.12	1.25	9.00
<b>La Vestale.</b> Giant trumpet type, pure ivory white perianth with trumpet of deep cream yellow, height, 18 inches. . . . .	.25	2.50	18.00
<b>Mrs. E. H. Krelage.</b> A fine white sort, sometimes called the "White King Alfred"; height, 20 inches	.20	2.00	15.00
<b>Mme. De Graaff.</b> A desirable and graceful variety, pure white perianth, pale yellow trumpet; height, 14 inches. (See engraving.) . . . . .	.20	2.00	15.00
<b>Princeps Maximus.</b> This is one of the most popular winter-flowering and forcing varieties grown, perianth sulphury; rich yellow trumpet; height, 15 inches. . . . . \$55.00 per 1000	.08	.80	6.00
<b>Spring Glory.</b> Long yellow trumpet, reflexed brim, perianth clear white; height, 16 inches. . . . .	.12	1.25	9.00
<b>Victoria.</b> A good bicolor famous for large and durable flowers; perianth very broad, creamy white in color; large fluted trumpet, rich yellow; height, 18 inches. . . . .	.10	1.00	7.50

### Narcissus Jonquilla or Jonquils

<b>Campernelle.</b> Much prized for its small golden flowers which are produced in great profusion. Perfectly hardy for the outdoor garden, and also a good variety for winter flowering in pots of soil. The yellow flowers are borne four to six on stems about eighteen inches high. . . . .	\$0.07	\$0.70	\$5.00
<b>Double Campernelle.</b> Very fine double form, beautiful golden yellow, 2-4 florets per stem. . . . .	.08	.80	6.00

### Rock Garden Varieties

<b>Cyclaminus.</b> Perianth reflexed like the flower of the Cyclamen, exceedingly slender tube-like trumpet of pure yellow; height about 5 inches. . . . .	\$0.35	\$3.50	\$25.00
<b>Trlandrus Albus.</b> The "Angels' Tears" of old Portugal. Creamy white bells which point down while the sharply recurved petals point upwards. Flowers are about 3/4 inch long on 6 inch stems. . . . .	.25	2.50	18.00
<b>W. F. Milner.</b> Miniature white trumpet and perianth. Eminently satisfactory for rockeries. 10 inches high. Exceedingly attractive. . . . .	.30	3.00	22.50

# American Grown Narcissus, Daffodils and Jonquils, Cont'd

Upper Flower—AUTOCRAT

Lower Flower—SOUTHERN GEM



## The Incomparable Daffodils *Narcissus Incomparabilis*

The Incomparabilis Group are garden hybrids between yellow Trumpets and Poeticus. They are all perfectly hardy, thrive under garden culture or for flowering in the house in winter. The flowers are all large and are borne freely on long stems.

	Each	Per Doz.	Per 100
<b>Autocrat.</b> Primrose yellow perianth, deeper yellow bowl-like crown; free flowering and vigorous; height, 20 inches (See engraving.).....	\$0.08	\$0.80	\$6.00
<b>Bernardino.</b> Perianth cream colored, the frilled and fluted cup stained deep apricot-orange at its edge. A good hardy grower which forms nice clumps in the garden in a short time. Earned several awards of merit; height, 20 inches.....	.10	1.00	7.50
<b>Croesus.</b> A wonderful introduction. The six-petalled overlapping primrose perianth supporting a crown of orange-red is a sensation to behold and a treasure in the garden everyone should have. Height, 16 inches.....	.20	2.00	15.00
<b>Lucifer.</b> A large flowering showy variety with white perianth and cup of glowing red-orange; strong grower; height, 18 inches.....	.08	.80	6.00
<b>Will Scarlett.</b> A cream colored perianth supporting a fine cup, exquisitely frilled, of wonderful orange-scarlet. Splendid for the garden because it holds its color nicely and is persistently hardy. Height, 18 inches.....	.10	1.00	7.50
<b>Sir Watkin.</b> This is a popular variety, perfectly hardy. The flowers of Sir Watkin have a deep primrose yellow perianth, and a more deeply tinted yellow cup or trumpet. Height, 20 inches. (See engraving.).....	.08	.80	6.00

## The Crown Daffodils—*Narcissus Barri*

This group is the result of garden crosses between the Trumpet, Poeticus and Incomparabilis varieties. All are hardy, producing long-stemmed fragrant flowers that are prized for cutting. They thrive in gardens and for winter flowering in pots or pans.

	Each	Per Doz.	Per 100
<b>Albatross.</b> A large handsome flower, perianth white, cup pale citron-yellow prettily frilled and edged orange-red; height, 18 inches.....	\$0.10	\$1.00	\$7.50
<b>Barri Conspicuus.</b> It has a broad spreading yellow perianth; crown edged with orange-scarlet; a robust strong grower; height, 20 inches..... \$55.00 per 1000	.08	.80	6.00
<b>Bath's Flame.</b> Yellow perianth, deep yellow cup with broad edge of orange-red. The petals are very long, and pointed, giving the flower a distinct and outstanding character; height, 18 inches.....	.15	1.50	12.00
<b>Red Beacon.</b> Ivory white perianth. Brilliant orange-scarlet cup. First class exhibition variety. Height, 16 inches. (See last page of cover.).....	.10	1.00	7.50
<b>Sea Gull.</b> One of the largest and most beautiful daffodils in this class. The spreading perianth is pure white, and the cup is canary color edged apricot; height, 17 inches..	.08	.80	6.00

## The "Chalice Cup" Daffodils—*Narcissus Leedsii's*

The fragrant "Silver Winged" Leedsii's are hybrids between white Trumpet Daffodils and Poeticus. They comprise forms similar to both the Incomparable and Barri groups but the Leedsii's all have white perianth petals and white, cream or very pale citron crowns.

	Each	Per Doz.	Per 100
<b>Crystal Queen.</b> Pure white perianth, pale primrose cup passing to white afterwards; height, 15 inches.....	\$0.10	\$1.00	\$7.50
<b>Mrs. Langtry.</b> This is a free-flowering variety, each bulb usually producing several flowers; broad white perianth, and white cup opening pale primrose; height, 16 inches.....	.08	.80	6.00
<b>Southern Gem.</b> Beautiful pure white petals, large lemon yellow crown, a splendid flower of rare symmetry, forces well; height, 16 inches. (See engraving.).....	.10	1.00	7.50
<b>White Lady.</b> A grand new giant flowering variety, concededly one of the best in commerce. The broad perianth is pure white surrounding a pale citron frilled cup which turns white. Height, 15 inches.....	.08	.80	6.00

## "Poet's" or Pheasant's Eye Narcissus

	Each	Per Doz.	Per 100
<b>Horace.</b> Pure white perianth, conspicuous red eye, free flowering and strong stemmed, a splendid forcing variety; height, 16 inches.....	\$0.08	\$0.80	\$6.00
<b>Poeticus Ornatus.</b> This is the early flowering "Poet's Narcissus" so popular for winter forcing as well as for gardens and for "naturalizing." The perianth is pure snow-white with a beautiful contrasting saffron yellow cup margined scarlet. It thrives wonderfully in gardens, or in semi-wild places planted among grass; and provides a continuous display of bloom for weeks; height, 18 inches..... \$55.00 per 1000	.08	.80	6.00

## American Grown Narcissus—Cont'd Double Narcissus and Daffodils



Semi-Double Narcissus Twink

	Each	Per Doz.	Per 100
<b>Orange Phoenix.</b> Beautiful double white flowers with orange nectary. Splendid for pot culture and cutting; height, 14 inches. . . . .	\$0.08	\$0.80	\$6.00
<b>Primrose Phoenix.</b> Primrose yellow, large rose-shaped flower, long stems. We recommend this variety as most satisfactory; height, 14 inches. . . . .	.15	1.50	12.00
<b>Sulphur Phoenix.</b> Beautiful snow-white flower, interlaced pale yellow; height, 14 inches. . . . .	.12	1.25	9.00
<b>Twink.</b> A most unusual semi-double type, the attractive flowers have alternating petals of soft primrose and orange. Suitable for garden and indoor culture very early flowering. . . . .	.25	2.50	18.00
<b>Von Sion.</b> The true "Double Yellow Daffodil." Rich golden-yellow perianth and trumpet. This is the old favorite so highly prized in old-fashioned gardens (see engraving); height 12 inches. . . . .	.10	1.00	7.50
		\$70.00 per 1000	

### The Hardy Cluster-Flowered Daffodils

Narcissus Poetaz

These new hybrids between Poeticus and Polyanthus are hardy, healthy, strong growers! The fragrant Poeticus-like flowers are borne in clusters like the Polyanthus. They soon form large luxuriant clumps.

	Each	Per Doz.	Per 100
<b>Cheerfulness.</b> The double white Poetaz hybrid, the petals are white with a suggestion of yellow at the base, a grand show variety. . . . .	\$0.12	\$1.25	\$9.00
<b>Elvira.</b> A large flower of remarkably good substance, carrying three or four flowers on long stems; and producing two to three stems to one bulb. Very fine for cutting; strong-growing and free flowering. Color pure white with yellow cup; height, 18 inches. . . . .	.08	.80	6.00
<b>Helios.</b> The perianth is yellow with a deeper golden yellow cup. The bulb produces three stems usually, and there are seven to eight broad flowers borne on each stem. This is the largest yellow variety; height, 18 inches. . . . .	.08	.80	6.00
<b>Orange Cup.</b> Pale yellow petals, deep golden cups, 4-5 large flowers on long stems, ideal cut flower and exquisite show variety. . . . .	.10	1.00	7.50

### Polyanthus Narcissus

The *Polyanthus* varieties of Narcissus are deliciously sweet-scented, of the easiest culture, very free flowering and continue long in bloom; bearing from six to one dozen flowers each. South of the freezing belt they are splendid for gardens and "naturalize" well. For growing in pots or pans of soil or in shallow dishes in pebbles and water, they are especially adapted and can be had in flower in the house from Christmas throughout the winter by bringing the pots of rooted bulbs in from the frame or cellar every week or two.

	Each	Per Doz.	Per 100
<b>Grand Soleil D'Or.</b> All Yellow Polyanthus. A beautiful variety bearing clusters of golden yellow flowers with orange cups. . . . .	.12	1.35	10.00
<b>Paper White Grandiflora.</b> All White Polyanthus. A large flowering type producing snow-white flowers of large size and good substance in trusses. Much used for early forcing for cut flowers, being brought in without difficulty by Christmas or even earlier. (See engraving.) \$42.50 per 1000	.06	.60	4.50

### Mixed Narcissus and Daffodils

For Naturalizing in Borders, Wild Gardens, Etc.

These are a Special Mixture of All Varieties. They are very suitable for growing in masses for garden decoration, and are particularly adapted for mixed borders, "naturalizing" in shrubbery by woodland walks, in woods by streams and lakes and semi-wild, outlying grounds. They are perfectly hardy and will flourish and increase for many years. . . . . \$40.00 per 1000

Each	Per Doz.	Per 100
	.60	4.50



PAPER WHITE

### Henderson's Selected Calla Lilies

A well-known plant of easy culture for winter bloom. It makes a handsome house or window plant. To aid profuse blooming keep dormant from the middle of June until the last of September; pot on receipt in good, rich soil, using 6- to 8-inch pot, give light and heat in abundance. Both foliage and flowers are attractive in this desirable winter bloomer.

**Aethiopia or Lily of the Nile.** This old favorite White Calla Lily is too well known to require any description. We offer dry roots, as they are superior for forcing and winter-flowering purposes; they come into bloom quickly and require less room, making less foliage. Extra large bulbs, 35c each; \$3.50 per doz.; \$25.00 per 100.

**Elliotiana, Yellow.** The yellow Calla; large rich, deep golden flowers often 4 to 5 inches across at the mouth; habit of growth and foliage like the old favorite white Calla excepting the leaves of Elliotiana are spotted with white. Dry bulbs, 35c each; \$3.50 per doz.; \$25.00 per 100. (Ready in November.)

### Lily of the Valley

(Ready for Delivery in November)

**Henderson's Extra Single Crown or "Pips."** The finest grade of Crowns in the world for winter flowering. They will bear 12 to 16 large bells on strong stalks, with foliage, even when forced for extra early; the pips average large, plump and regular, with extra long roots. (See illustration.) 25 Crowns (1 bundle), \$2.00; 100 Crowns, \$7.00; \$60.00 per 1000.

**Fortin's Giant.** This is the largest variety yet produced; it is only adapted for open ground planting, and may not show much superiority the first spring after planting, but by the second season, or when it gets well established, it produces wonderfully luxuriant foliage and immense spikes of purest white bells. Crowns, \$1.00 per doz.; \$7.50 per 100.



LILY of the VALLEY

## HARDY LILIES

Lilies commence flowering in June and with the various species maintain a continuous and unbroken succession in the shrubbery border. Most Lily Bulbs, being of late maturity, are not ready before October, November and December (the best time to plant them). Where the ground is liable to freeze up before the late lilies arrive it should be mulched with 6 or 8 inches of leaves or manure to keep it from freezing, so the bulbs may be planted on arrival.

**Auratum.** (The Golden Rayed Lily of Japan.) The flowers are pure white, thickly studded with crimson spots, while through the centre of each petal runs a clear golden band. Fully expanded, the flowers measure nearly a foot across and possess a most delicious fragrance. Season of bloom from July to October, 3 to 5 feet.

**Extra size bulbs** (9 to 11 inch bulbs) . . . 30c each; \$3.00 doz.; \$22.50 per 100

**Mammoth bulbs** (11 to 13 inch bulbs) . . . 40c each; \$4.00 doz.; \$30.00 per 100

**Candidum, Henderson's Superior Northern Crown.** This is the ever popular fragrant, snow-white, hardy garden Lily, which is also known as "Annunciation Lily," and "Madonna Lily." It grows 3 to 4 feet high, and blooms in the open ground in June.

**Extra large bulbs** . . . 40c each; \$4.00 doz.; \$30.00 per 100

**Canadense.** Our native Canadian Lily. Bright yellow marked with copious spots of red; blooms in June and July. 2 to 3 feet high.

**Canadense Flavum.** A pure yellow selection of the above. 20c each; \$2.00 doz.; \$15.00 per 100

**Canadense Rubrum.** Crimson with dark spots. 20c each; \$2.00 doz.; \$15.00 per 100

**Canadense Mixed Varieties.** A fine dwarf Japanese variety of easy culture. Colors shading from yellow to deep blood red. Flowers June-July. 20c each; \$2.00 doz.; \$15.00 per 100

**Elegans.** A fine dwarf Japanese variety of easy culture. Colors shading from yellow to deep blood red. Flowers June-July. 20c each; \$2.00 doz.; \$15.00 per 100

**Hansoni.** (The True Japanese Yellow Martagon.) This is one of the best of the Martagon group, unsurpassed in vigor of growth and beauty by any other lily. The flowers are large, of a bright yellow, tinged orange and spotted maroon, with thick wax-like petals. Very robust and free. Flowers in June. 40c each; \$4.00 doz.

**Henry.** (The Yellow Speciosum.) A new rare and very beautiful Lily from China. It is very hardy, and without doubt one of the best Lilies for garden culture. The flower stalks, 3 to 5 feet high, carry 5 to 8 large flowers each, rich apricot-yellow, lightly spotted with brown. Flowers July-August. 35c each; \$3.50 doz.

**Regale ("A Royal Beauty").** The flowers are white, slightly suffused with pink, with a beautiful shade of canary yellow at the center, blending out part way up the trumpet. The fragrance is fascinating. A splendid hardy Lily for the garden, flowering in July. Well-grown bulbs often produce five to eight blooms. (See illustration.) 30c each; \$3.00 doz.

**Speciosum or Lancifolium.** The varieties of L. Speciosum or Lancifolium are perhaps the most popular Lilies grown. They are easy of cultivation, and produce large flowers of delicate beauty on strong stems; height, from 2 to 4 feet; blooming in August. (See illustration.) 30c each; \$3.00 doz.

**Speciosum Album.** White. 8 to 9 inch bulbs. 30c each; \$3.00 doz.

**Speciosum Rubrum (Roseum).** White, shaded and spotted with rose and red. 9 to 11 inch bulbs. 30c each; \$3.00 doz.

**Speciosum Melpomene.** Rich blood-crimson, heavily-spotted. 9 to 11 inch bulbs. 30c each; \$3.00 doz.

**Superbum.** (Turk's Cap Lily.) One of our native species. Grown in good rich soil, it will produce upwards of 20 beautiful orange, tipped red, spotted flowers in a pyramidal cluster. 3 to 5 feet high. Blooms in July. 25c each; \$2.50 doz.; \$18.00 per 100

**Tigrinum Splendens.** (Improved Tiger Lily.) The grandest of the Tigers, black polished stem. Very large pyramids of flowers, orange red, spotted with black. 3-5 ft. high. Blooms August. 20c each; \$2.00 doz.; \$15.00 per 100

**Tigrinum Flora Plena.** (Double Tiger Lily.) Double bright orange-red flowers spotted with black. Blooms in August. 25c each; \$2.50 doz.; \$18.00 per 100

**Umbellatum.** Of strong, sturdy habit, growing from 2 to 3 feet high, having large showy flowers in clusters at the summit, flowering in June. The colors range through all shades of red from rose to blackish-crimson, yellow, buff, orange, etc., many being spotted. **Mixed Colors.** 20c each; \$2.00 doz.; \$15.00 per 100



## LILIES FOR GROWING INDOORS

### Bermuda Easter *Lilium Longiflorum Harrisii*

The short time required to bring this peerless Lily into flower renders it invaluable. The flowers are delightfully fragrant pure waxy-white, and if cut when partially open can be kept for two weeks. Bulbs potted in September can be had in flower in December, if desired.

A succession of bloom can be kept up throughout the winter by bringing in a few pots of bulbs from cold frames at intervals. Blooming plants in pots are suitable for Easter offerings and presents.

**Bulbs Ready for Shipment—August to December.** (See illustration.)

**Extra Size Bulbs.** (7 to 9 inches in circumference.) This is the most popular size to grow as pot plants for decoration and equally as valuable for cutting. Bulbs should produce from 8 to 12 flowers. 35c each; \$3.50 doz.; \$27.50 per 100.

**Monstrous Size Bulbs.** (9 to 11 inches in circumference.) These are usually grown for specimens in pots for exhibition and decorations. Each bulb should produce from 12 to 18 flowers. 50c each; \$5.00 per doz.; \$37.50 per 100.

### The Formosa Easter *Lilium Longiflorum Formosum*

This is an improved type of the well known L. longiflorum also known as the "Easter or St. Joseph's Lily." The plants are of healthy strong growth—about 3 feet high and produce beautiful snow white trumpet shaped flowers, 6 to 8 inches long. This lily is largely grown by florists who "force" them as pot plants and for cut flowers. It is not quite as early as *Lilium Harrisii* For Shipment, September to December.

**Extra Size Bulbs.** 9 to 10 inches. 35c each; \$3.50 doz.; \$27.50 per 100

### Japan Easter *Lilium Longiflorum Giganteum*

This Japanese type is highly thought of for late winter and Easter forcing—though the bulbs of this variety are often carried over in cold storage to be brought into bloom at any desired time the succeeding year. The plant is of sturdy stocky growth—with black marked stems. The flowers of purest white are the largest of the longiflorums. For Shipment, October to December.

**Extra Size Bulbs,** 9 to 10 inch, 35c each; \$3.50 doz.; \$27.50 per 100.  
**Six Bulbs of a Variety Sold at the Dozen Rate, 25 at the Hundred Rate.**



(plant in pot)



## German Iris or Fleur-de-Lis

### Iris Germanica and Allied Species

The recent introduction of German Iris offered below are well termed "Garden Orchids" and they outrival the orchids in wide range of coloring—including yellows; blues from soft lavender to intense purples, reds from pinkish mauve to claret, beautiful bronzes and pure whites. Some are marked and margined with other colors in exquisite harmony, many of the varieties being delightfully fragrant.

The roots are ready for shipment from September 15th to November 15th.

	Each	Per Doz.	Per 100
S. for standards, F. for falls			
<b>Asia.</b> S. soft lavender shading to rich yellow; F. reddish-purple	\$0.25	\$2.50	\$18.00
<b>Ambassadeur.</b> A grand variety of fine color, form and growth. S. bronzy violet. F. dark velvety maroon. Conspicuous orange beard. Tall, vigorous, widely branched, most satisfactory	.25	2.50	18.00
<b>Dolly Madison.</b> S. smoky lavender with yellow shadings; F. blue and old gold, stigmas yellow	.35	3.50	
<b>Dream.</b> S. and F. uniform shade of Cattleya rose, very large	.25	2.50	18.00
<b>Mme. Grandchou.</b> Fragrant. The finest of the dark purple sorts	.25	2.50	18.00
<b>George Yeld.</b> Perfect form. S. apricot flushed rose; F. rose crimson	.25	2.50	18.00
<b>Gold Imperial.</b> Rich chrome yellow, fine form	.25	2.50	18.00
<b>Jacqueline Guillott.</b> Growth vigorous. S. and F. pale bluish violet	.35	3.50	
<b>Lord of June.</b> Fragrant. S. soft blue; F. beautiful violet	.20	2.00	15.00
<b>Mildguard.</b> Lovely blend of pink and yellow, general effect being pink	.25	2.50	18.00
<b>Mildred Presby.</b> S. creamy white; F. large, rich pansy-violet	.25	2.50	18.00
<b>Morning Splendour.</b> Fragrant. The finest American variety, flowers of a rich red tone	.25	2.50	18.00
<b>Mother of Pearl.</b> Vigorous in growth and producing its wonderful flowers freely. It is a self color with all the soft iridescent colors of Mother of Pearl. Has been called "The perfect Iris." S. and F. pale bluish lavender with a faint creamy undertone	.25	2.50	18.00
<b>Pioneer.</b> Marvelous color, brilliant red-purple	.20	2.00	15.00
<b>Princess Beatrice.</b> Fragrant. S. lavender; F. deep clear lavender; flowers large and extra fine	.20	2.00	15.00
<b>Shekinah.</b> Fragrant, handsome clear soft yellow, deeper at throat	.20	2.00	15.00
<b>Taj Mahal.</b> Beautiful pure white flowers fine form	.25	2.50	18.00
<b>Folkwang.</b> S. White flushed rose; F. claret red with cream edging	.25	2.50	18.00
<b>True Charm.</b> Fragrant. White standards and falls suffused soft lavender, elegantly frilled with a border of lavender	.25	2.50	18.00
<b>Vesper Gold.</b> Distinct yellow, violet flush, gold and maroon veining on the falls	.25	2.50	18.00
<b>Mixed German Iris.</b> Including many beautiful varieties	.12	1.25	9.00



German Iris True Charm

### Japan Iris Iris Kaempferi

The magnificence of these new Irises surpasses description. The flowers are of enormous size, averaging 6 to 8 inches across, charming hues and colors, varying like wadded silk in the sunlight, the prevailing colors being white, crimson, rose, lilac, lavender, violet and blue; each flower usually representing several shades, while a golden-yellow blotch, surrounded by a halo of blue or violet, at the base of the petals intensifies the wealth of coloring. They bloom in great profusion in June and throughout July, coming into bloom when other Irises are faded and gone. Ready September 15 to November 15.

## Spanish Iris or Iris Hispanica

- Belle Chinoise.** Deep yellow.
- King of the Blues.** (Count of Nassau.) Fine deep purplish blue.
- King of the Whites.** Pure white with small orange blotch on the falls; fine.
- King of the Yellows.** Very fine golden yellow.
- Louise.** Delicate light blue, early flowering.
- Prince Henry.** Large purplish bronze, one of the best of this color.

Price of any of above, 8c each; 80c per doz.; \$6.00 per 100.

## Dutch Iris or Iris Hollandia

This variety is generally regarded as a giant strain of early Spanish Iris. The leaves are larger and the flowers appear a week or two earlier than the Spanish Iris.

- E. B. Garnier.** Uniform dark blue.
- Imperator.** Larger flowering dark blue.
- Van Huchtenburg.** White standards, yellow falls.
- Th. Wijck.** Delightful light blue.
- White Excelsior.** Uniform white.
- Yellow Queen.** Uniform pure yellow, excellent novelty.

Price of any of the above, 10c each; \$1.00 per doz.; \$7.50 per 100.

**Early Flowering Wedgewood.** Beautiful large flower on tall stalks. Color, wedgewood blue one of the best for forcing. Price: 20c each; \$2.00 per doz.; \$15.00 per 100.



Japan Iris

### Single Flowering

	Each	Per Doz.
<b>Amethyst.</b> Very large wavy petals, exquisite lavender shade	\$0.40	\$4.00
<b>Apollo.</b> Pure white, pink center	.30	3.00
<b>Beauty.</b> Silvery white, distinctly veined and suffused indigo blue. Inner petals plum edged white. Very beautiful	.25	2.50
<b>Clarice Childs.</b> Petunia violet, conspicuous yellow center surrounded with blue cast. Large	.40	4.00
<b>Ethel J. Marshall.</b> Ivory white splashed and veined dull violet blue petaloids aconite violet edged white, stigmas ivory white splashed with violet cast	.40	4.00
<b>Granite.</b> Purple, spotted and flaked white. Lilac center	.25	2.50
<b>Mars.</b> Reddish purple, striped and blotched white	.25	2.50
<b>Painted Lady.</b> White, center blotched light purple, tufts white with purple edge	.35	3.50
<b>Red Riding Hood.</b> Fine amaranth veined and suffused white	.25	2.50
<b>Violet Beauty.</b> Pansy violet, conspicuous yellow blotch in center surrounded with blue cast	.35	3.50

### Double Flowering

	Each	Per Doz.
<b>Catherine Parry.</b> Blue overlaid rosy-red, high tufts in center almost triple	\$0.25	\$2.50
<b>Choselden.</b> Ruby crimson, white halo surrounds the yellow blotches radiating into broad lines. Petaloid stigmas light violet	.40	4.00
<b>Eleanor Parry.</b> Claret red, flamed white and blue. Compact medium size flower	.40	4.00
<b>Gold Bound.</b> Pure white, one of the best	.25	2.50
<b>Kuro Komo.</b> Purple overlaid with dark blue. Yellow blotches, stigmas dark blue bordered purple	.40	4.00
<b>La Favorite.</b> Large, fine white, freely veined blue, with a rich purple center	.35	3.50
<b>Mount Hood.</b> Light blue shaded darker, bright orange center	.25	2.50
<b>Mrs. J. Alexander Hayden.</b> White ground edged and shaded pale violet. Stigmas, white slightly edged and tipped pale violet	.35	3.50
<b>Pyramid.</b> Violet purple, veined white in center of each petal	.25	2.50
<b>Rose Anna.</b> Ivory white heavy ruby-red veins, conspicuous yellow blotch. Stigmas dark plum	.35	3.50
<b>Japan Iris Seedlings.</b> Containing many new and beautiful single and double varieties. Price: 15c each; \$1.50 per doz.; \$12.00 per 100.		

**Amaryllis Giant Hybrid** "International Prize" Strain

The coloring and marking are exquisite; the bulbs are large, and are of sufficient strength and age to produce flowers during winter or spring. They are the most gorgeous bulbous plants known. They throw up spikes from 2 to 3 feet high, bearing enormous wide petalled flowers averaging 8 to 10 inches across and of great substance, some being of rich and glowing colors, others delicately shaded and superbly veined. (See illustration.)

**Mixed Varieties.** 75c each; \$7.50 per doz.



Amaryllis Giant Hybrid

**Anemone Giant St. Brigid**

An improved Irish variety bearing magnificent flowers, double, semi-double and single, 3 to 5 inches across, of the richest as well as the daintiest colors. There is maroon, scarlet, crimson, pink, blue, purple, cream, white, etc., in endless variety. The flowers are borne freely on long stems and are charming. Grow in cold frames in northern states. Mixed colors, 75c per doz.; \$6.00 per 100.

**Chionodoxa**

**GLORY OF THE SNOW**

They produce flower spikes bearing 10 to 15 lovely Scilla-like flowers. They are perfectly hardy, and may be planted as an edging to a bed, or naturalized on the lawn. They are admirable for pot culture winter blooming in the house.

**Chionodoxa Lucillae.** Bright blue with large clear white center (large cultivated bulbs). 30c per doz.; \$2.25 per 100; \$20.00 per 1000.

**Chionodoxa Sardensis.** Intense deep blue (large cultivated bulbs). 30c per doz.; \$2.25 per 100; \$20.00 per 1000.

**Chionodoxa Gigantea.** Unusually large flowers of lovely lilac-blue, with conspicuous white centre (large cultivated bulbs). 60c per doz.; \$4.50 per 100; \$40.00 per 1000.

**Crocus Spring Flowering** Including New Hybrid Varieties

As edgings to beds—and bordering walks—or as undergrowth among tulips, hyacinths, daffodils, etc., they are very effective as the flowers are over when the other bulbs begin blooming.

Crocus are also easily flowered in the house in winter, grown in pots and pans of soil. For instructions see leaflet "How to Grow Bulbs" sent with every order. (See illustration.) **Price of named varieties mentioned below 40c per doz.; \$3.00 per 100; \$27.50 per 1000.**

**WHITE**

**King of Whites.** A grand new variety, producing long snow-white flowers.  
**May.** Lovely round petalled pure white flowers of great size.  
**Mont Blanc.** An old favorite, large pure white.

**BLUE AND PURPLE**

**Baron von Bruno.** A large deep purple.  
**David Rizzio.** Deep lavender shaded purple.  
**Hero.** A new hybrid; dark glossy purple. Extra large and fine.  
**Maximilian.** Beautiful sky-blue flowers, distinct.

**STRIPED**

**Albion.** A fine lavender striped white and violet.  
**Cloth of Silver.** White feathered and striped with lilac and purple.  
**Fantazy.** A new hybrid; immense flowers of light gray striped dark blue.

**YELLOW**

**Cloth of Gold.** The earliest of all, very prolific yellow veined golden brown.  
**Yellow Mammoth.** The largest flowering sort of this color.

**MIXED GIANT FLOWERING CROCUS**

All colors and shades including many new hybrid seedlings so far outclassing the ordinary grade mixtures that we have discarded the latter. **30c per doz.; \$2.50 per 100; \$22.50 per 1000.**



**Freesias Henderson's Superior**

Freesias are popular for pot culture, flowering in the winter and spring in the conservatory, or window garden.

**Culture**

Plant in deep pots, for the new roots which form below the others go deep, plant ten bulbs in a five-inch pot.

After being potted do not store, but place in an indirect light in the dwelling or under the bench in the conservatory until growth shows above the soil.

Never force, but grow in a fairly cool temperature. Flowers appear in 5 or 6 months after planting.

**Apotheose.** (Novelly 1932.) Beautiful pink tinted lavender, long stems. Price: \$2.00 per doz.; \$15.00 per 100.

**Elder's Giant White.** The finest white variety, beautiful pure white flowers double the size of Purity. Price: \$1.00 per doz.; \$7.50 per 100.

**General Pershing.** A beautiful shade of pinkish lavender with yellow lip tinted bronze. Price: 75c per doz.; \$5.00 per 100.

**Golden Daffodil.** A great improvement over any other yellow sort, the color is rich daffodil yellow. The large flowers are borne on long rigid stems. Price: 75c per doz.; \$5.00 per 100.

**Mrs. Marc Peters.** Rosy salmon with orange blotch on lower petals. Price: \$1.00 per doz.; \$7.50 per 100.

**Olivette.** Beautiful carmine red with yellow throat, yellow blotch on lower petals, very free bloomer. Price: 75c per doz.; \$5.00 per 100.

**Purity.** Produces large sprays of snow-white flowers deliciously fragrant; free blooming and of great value for forcing for cut flowers. Price: Mammoth Bulbs, 60c per doz.; \$4.50 per 100; \$40.00 per 1000.

**Mixed Hybrids.** 50c per doz.; \$4.00 per 100.



FREESIA

**Fritillaria Meleagris**

Dwarf spring-flowering plants bearing large pendant bell-shaped flowers of various colors, yellow, white, black, purple, striped and splashed and checkered in the most curious way. They are fine for pot culture and look well when grown in large groups in the garden border or wild garden. (See illustration on page 16.)

**Mixed Varieties.** 60c per doz.; \$4.00 per 100.

Five Bulbs of a Variety Sold at the Dozen Rate, 25 at the Hundred Rate

### Grape Hyacinths

When naturalized in little colonies where they can remain undisturbed for several years, the effect is very striking—while grown as edgings to other beds they are charming. They are also adapted for winter flowering in the house. (See illustration.)

**Blue Grape Hyacinths.** 35c per doz.; \$2.25 per 100; \$20.00 per 1000.

**White Grape Hyacinths.** 50c per doz.; \$3.50 per 100; \$30.00 per 1000.

**“Heavenly Blue” Grape Hyacinths.** A new type with larger flowers of richest gentian blue and delightfully fragrant; desirable for cutting and of splendid effect massed in the garden or border. 40c per doz.; \$3.00 per 100; \$27.50 per 1000.

### Leucojum (Spring Snowflake)

**Vernum.** This is one of the earliest and most attractive spring flowers. Growing from 6 to 8 inches high they bear dainty nodding flowers of white, tipped with green. Plant in the same manner as Crocus. 80c per doz.; \$6.00 per 100.

### Leucocoryne—Glory-of-the-Sun

**Ixioides Odorata.** Flowers light blue on tall, wiry stems and of long-lasting quality, faint fragrance; for greenhouse culture only. Grown in the same manner as Freesias. 25c each, \$2.50 per dozen.

### Ornithogalum—Arabicum (Star of Bethlehem)

Makes a large umbel of small white flowers with black base produced on a tall spike. Hardy in the extreme south but must be grown indoors in the north. 80c per doz.; \$6.00 per 100.

### Oxalis

Charming little half-trailing or bushy plants particularly adapted for pot culture and hanging baskets, the foliage alone is very attractive and when in flower they are exceedingly pretty.

**Bermuda Buttercup.** This is one of the finest winter-flowering plants for pot culture. It is a strong, luxuriant grower, and the great profusion of bloom produced in uninterrupted abundance for weeks is astonishing. The flowers are of the purest bright buttercup yellow. 40c per doz.; \$3.00 per 100.

**Grand Duchess.** A California variety of great beauty; of dwarf sturdy growth throwing large exquisite flowers well above the foliage. Extremely free-flowering from November till June. Price for either, **White, Pink or Lavender**, 40c per doz.; \$3.00 per 100.

### Ranunculus

These are unrivaled for attractive colors, ranging through shades of crimson, white, yellow, purple, black. Many beautifully marked with other shades. They flower profusely in pots in the house during the winter or if grown in frames in the spring.

**Double Giant French Mixed.** 60c per doz.; \$4.50 per 100.

**Tecolete.** A new hybrid variety of this popular flower having blooms twice the size of the ordinary sorts. The colors range from crimson to rose and beautiful shades of yellow to pure white, height 15 to 18 inches. (See illustration.) Price, per doz., 75c; per 100, \$5.00.

### Scilla (Blue Bells)

Most beautiful hardy spring bulbs, producing in profusion masses of exquisite rich blue flowers almost before the snow has disappeared. If grown in masses, their flowers fairly carpet the ground. Grown in pots, they may be had in bloom from Christmas until April.

**Nutans (English Bluebell.)** Light blue, 50c per doz.; \$3.50 per 100, \$30.00 per 1000.

**Siberica (Blue).** 50c per doz.; \$3.50 per 100; \$30.00 per 1000.

**Siberica Alba.** The white flowering variety, very beautiful. (See illustration.) 50c per doz.; \$3.50 per 100; \$30.00 per 1000.

**Campanulata. (Wood Hyacinth or Bluebell.)** Flowers borne on tall spikes. 1 to 2 feet high. Each flower measures nearly one inch across and droops gracefully; perfectly hardy; also fine for pot culture. We offer the following colors:

**Major Blue.** 50c per doz.; \$3.50 per 100. **Rose.** 50c per doz.; \$3.50 per 100. **White.** 50c per doz.; \$3.50 per 100.

### Snowdrops

In the early spring months there is nothing more beautiful than a sheet of the snowy, graceful blossoms of the Snowdrop. Beds and effects of surpassing beauty may be arranged with Snowdrops in the centre edged with bright blue Scilla Siberica, or Chionodoxias, or by intermingling them. Used as a permanent edging, and in masses on the edges of lawns, nestling in the grass, they look charming. Snowdrops are easily flowered in pots during the winter.

**Single Snowdrops.** 50c per doz.; \$3.50 per 100; \$30.00 per 1000.

**Double Snowdrops.** 60c per doz.; \$4.50 per 100; \$40.00 per 1000.

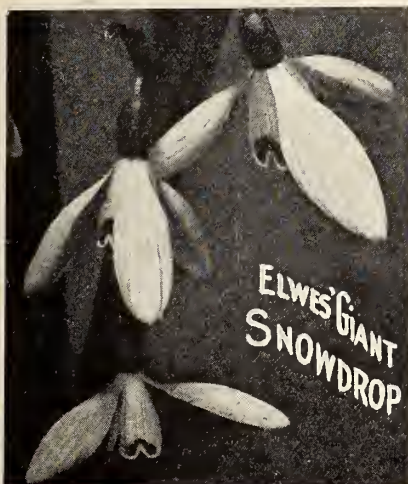
**Elwes' Giant Snowdrop.** One of the finest of the genus, at least three times the size of the ordinary single Snowdrop; flowers slightly marked with green spots; fine for cutting. 50c per doz.; \$3.50 per 100; \$30.00 per 1000.

### Winter Aconite (Eranthis Hyemalis)

Early in spring the golden blossoms of the Winter Aconite appear resting on an emerald-green cushion of leaves. The foliage remains long after the flowers, making the plant especially valuable in moist situations such as under trees where the Winter Aconite thrives. 3 to 8 inches high. 35c per doz.; \$2.75 per 100; \$25.00 per 1000.



Grape Hyacinths





Chionodoxa Lucillae



Narcissus W. P. Milner



Narcissus Triandrus Albus



Scilla Campanulata



Giant Flowering Crocus



Fritillaria Meleagris



Narcissus Cyclamineus

## Henderson's Selection of BULBS FOR ROCK-GARDENS

Bulbs of certain varieties are indispensable for the rock-garden, if there is to be any effective display of flowers in early spring.

The best way to plant them is in the various pockets of soil to be found in abundance all over a rock-garden.

Bulbs grow very freely and increase greatly from year to year until they finally become large clumps; which can then be divided and used for other purposes about the garden.

We illustrate on this page ten of the varieties most used, and also offer others in the list below, and we wish particularly to draw attention to the miniature Narcissi illustrated on this page; as they are now much in demand for planting in rock-gardens.

**Chionodoxa Lucillae**—*Glory of the Snow.* They produce flower spike bearing 10 to 15 lovely Scilla-like flowers. They are perfectly hardy, and may be planted in the rock-garden, or naturalized on the lawn. Bright blue with large clear white center.

30c doz.; \$2.25 per 100; \$20.00 per 1000.

**Crocus**—*Mixed Giant Flowering.* All colors and shades including many new hybrid seedlings so far outclassing the ordinary grade mixtures that we have discarded the latter (see also page 14) 30c per doz.; \$2.50 per 100, \$22.50 per 1000.

**Fritillaria Meleagris.** Dwarf plant bearing large bell-shaped flowers of various colors—yellow, white, black, purple, splashed and checkered in the most curious way. They are fine when grown in groups in the rock-garden.

**Mixed Varieties.** ..... 60c per doz.; \$4.00 per 100.

**Grape Hyacinths "Heavenly Blue."** A new type with larger flowers of richest gentian blue and delightfully fragrant; desirable for cutting and of splendid effect massed in the garden or border. (See illustration on page 15) ..... 40c per doz.; \$3.00 per 100; \$27.50 per 1000.

**Snowdrop—Elwes Giant.** At least three times the size of the ordinary single Snowdrop; flowers slightly marked with green spots; used in masses, they look charming. 50c per doz.; \$3.50 per 100; \$30.00 per 1000.

**Scilla Campanulata.** (*Wood Hyacinth or Bluebell.*) Flowers borne on tall spikes, 1 to 2 feet high. Each flower measures nearly one inch across, perfectly hardy. We offer the following colors: Major Blue, Rose or White ..... 50c per doz.; \$3.50 per 100; \$30.00 per 1000.

### NARCISSUS FOR ROCK-GARDENS

**Cyclamineus.** One of the earliest and best for a rock-garden. Slender trumpet of pure yellow. Height, 5 inches.

35c each; \$3.50 per doz.; \$25.00 per 100.

**Triandrus Albus or "Angel's Tears".** Grows best in gritty soil between rocks. Creamy white. Height, 6 inches.

25c each; \$2.50 per doz.; \$18.00 per 100.

**W. P. Milner.** A miniature sort, white trumpet and perianth, once established it blooms for years. Height, 10 inches.

30c each; \$3.00 per doz.; \$22.50 per 100.

### TULIPS FOR ROCK-GARDENS

**Clusiana.** (*The Little Lady Tulip.*) A beautiful dwarf variety suitable for rockeries. Should be planted two inches apart each way. Color, white with cherry stripes. Height, 8 inches.

85c per doz.; \$6.50 per 100.

**Eichleri.** A grand variety from Turkestan, producing immense flowers of crimson scarlet with black center marked with gold. Height, 11 inches.

\$1.00 per doz.; \$7.50 per 100.

**Kaufmanniana.** (*Water Lily Tulip.*) A fine sort from Central Asia. Large, broad, reflexing petals; creamy white with carmine-red on the reverse, center golden yellow. Height, 6 inches.

\$1.35 per doz.; \$10.00 per 100.



Snowdrop Elwes Giant



Tulip Clusiana



Tulip Kaufmanniana

# Henderson's Modern Herbaceous Peonies For 1935

The roots to be shipped at customers convenience between September and November.

Customers will be billed for the goods ordered after shipment. Those having no account with us will receive an invoice so that remittance can be made before shipment.

We Pay Transportation Charges East of the Mississippi.

**Our Method of Selling Henderson's Herbaceous Peonies.**—It is the rule among most sellers of Peonies to send out divided roots, that is, older plants cut into several 2 to 3 crowned roots. These, of course, can be sold at a lower price, but all Peony purchasers should know that normal flowers of maximum size will not be produced on these divided roots for two or three years. As most of our customers prefer to pay a little more and get older, roots, therefore we are offering roots of 2 and 3 years growth. These, according to age, will give a quantity of blooms the succeeding summer if planted between September 15th and November 1st.



## White

	2 Yr. Old Each	3 Yr. Old Each
<b>Albate.</b> Milk white, with cream center, ruby markings on some petals. Large bloom of perfect form. A real gem	\$0.75	\$1.25
<b>Alsace Lorraine.</b> Rich creamy white tinted brownish-yellow. Produces clusters of large imbricated flowers, with a center like a water lily	1.00	1.50
<b>Baroness Schroeder.</b> Tall. Flesh white to milk white. Fine free bloomer of very large globular flowers. Fragrant	1.00	1.50
<b>Bayadere.</b> Creamy white with a golden heart. Large globular flowers	1.25	1.75
<b>Couronne D'Or.</b> Tall. White, slightly flecked crimson, reflecting golden stamens through the petals. Profuse bloomer, very popular	.75	1.25
<b>Duchess de Nemours.</b> Sulphur white with a touch of green at the heart that seems to light up the whole flower. Fragrant	.60	1.00
<b>Festiva Maxima.</b> Tall. Ivory white flowers of feathery appearance with a splash of crimson in center. Very large and globular. Fragrant	.60	1.00
<b>Frances Willard.</b> Tall. White delicately shaded pink. Raised cup shaped center filled with golden stamens fragrant and very choice	1.25	1.75
<b>James Kelway.</b> Rose white changing to milk-white. Tinged yellow at base petals	1.00	1.50
<b>La Fiancee.</b> Creamy white with base of petals shaded yellow. Center flecked crimson showing stamens	1.25	2.00
<b>Mme. Emilie Lemoine.</b> Glossy white tinted with pale pink fading to pure white when in full bloom. Large flowers, well rounded and of great substance	1.00	1.50
<b>Stephanie.</b> Creamy white with golden reflections from stamens at base of petals	1.00	1.50

## Pink and Rose Varieties

<b>Albert Crousse.</b> Delicate sea shell pink, very large and full. Petals imbricated and overlap. Fragrant	\$0.75	\$1.25
<b>Claire Dubois.</b> Rich clear satiny pink with glossy reflex	.75	1.25
<b>Elwood Pleas.</b> Delicate pink or white tinted pink. Very large and extra good flower. Fragrant	1.00	1.50
<b>Georgiana Shaylor.</b> Pale rose pink, center and guards slightly splashed crimson	1.50	2.00
<b>Germain Bigot.</b> Pale lilac rose. Center flecked crimson. Very good	.75	1.25
<b>Gismonda.</b> Flesh-pink with delicate rose center. Large full globular flower. Very fragrant. A gem	1.25	1.75
<b>Livingstone.</b> Pale lilac-rose with pale silver sheen. Large full imbricated flowers coming in clusters	.75	1.25
<b>Marguerite Gerard.</b> Very pale hydrangea-pink fading to nearly white. Central petals flecked dark crimson	.60	1.00
<b>Milton Hill.</b> Pale lilac-rose. Very distinct, pure color. Large globular flower	1.50	2.00
<b>Mons. Jules Elle.</b> Pale lilac-rose. Collar lighter, shaded amber yellow at base. Fragrant	1.00	1.50
<b>Octavie Demay.</b> Guards and center pale hydrangea-pink, collar almost white. Fragrant	.75	1.25
<b>Reine Hortense.</b> Uniform hydrangea-pink minutely splashed on a white background. Center prominently flecked crimson	1.25	2.00
<b>Solange.</b> Lilac white deepening toward center with salmon shadings	1.25	2.00

## Pink and Rose Varieties (Cont'd)

	2 Yr. Old Each	3 Yr. Old Each
<b>Therese.</b> Rich satiny-pink with glossy reflex. Very large, developing a high crown. One of the most popular varieties grown. Fragrant	\$2.00	\$3.00
<b>Walter Faxon.</b> Uniform pure bright rose, deepening toward the center. Very distinct and delicate color	2.00	3.00

## Crimson and Dark Red

<b>Adolphe Rousseau.</b> Tall. Dark velvety red with hues of garnet, and a distinct metallic reflex. One of the best dark varieties. Large	\$1.50	\$2.00
<b>Felix Crousse.</b> Deep ruby red, center shading deeper. Large globular bloom of fine form	.75	1.25
<b>Grandiflora Rubra.</b> American Beauty Red	1.25	1.75
<b>Grover Cleveland.</b> Dark crimson, very large and full flower	1.25	1.75
<b>Karl Rosefield.</b> Dark crimson, very brilliant. Large, globular and compact	.75	1.25
<b>Longfellow.</b> Tall. Brilliant crimson with cherry tones very bright and effective for any use. Large and of good form	2.00	3.00
<b>Mary Brand.</b> Crimson with silky sheen, center of fringed petals with golden stamens interspersed. Large fragrant flowers	1.25	2.00
<b>Mons. Martin Cahuzac.</b> Very dark purple garnet with black reflex	2.00	3.00
<b>Richard Carvel.</b> Very bright crimson. Large compact globular flower. Fragrant	1.50	2.00
<b>The Gem.</b> Brilliant dark crimson flowers compact and beautiful. Produces great clusters when well established	1.50	2.00

## Single and Japanese

<b>Akaku (Japan).</b> Crimson—carmine, large flowers	\$2.00	\$3.00
<b>Catherine Parry.</b> Single, early. Tall. Delicate shell pink shading to flesh white	1.25	2.00
<b>Cathedral (Japan).</b> Blush with cream colored central filament petals	1.50	2.00
<b>Flashlight (Japan).</b> Early Med. Guards light tyrian rose, narrow center petals amber yellow shading pink at base	1.50	2.00
<b>Foaming Wave (Japan).</b> Carmine rose, very choice	1.50	2.00
<b>King of England (Japan).</b> Rich ruby madder; long narrow central petals, pure gold changing to gold striped carmine	3.00	4.00
<b>Mikado (Japan).</b> Dark crimson with narrow filamental petals edged crimson and tipped gold	2.00	3.00
<b>Petite Renee (Anemone).</b> Mid. Med. Collar clear carmine—purple, central petals very narrow clear carmine striped white, yellow background	1.25	2.00

## Peonies to Color (Without Names)

### Double White, Double Red, Double Pink

We offer these in strong divided roots at 30c each; \$3.00 per doz.

We hold an annual exhibition of Peony Flowers beginning early in June. At that time we publish "Henderson's Peony Guide" with cultural instructions which we will forward free to all applicants.



A Hardy Perennial Flower Garden from Seeds Sown the Previous Summer

## Henderson's Perennial Flower Seeds for Summer Sowing

Hardy gardening is becoming more popular every year. To meet this increasing demand for seeds of perennial plants we append a list of the leading sorts, which if sown this summer will produce plants that will flower next season. Biennials grow from seed one year, bloom and die the next. Perennials last for a number of years, blooming annually from seed after the first season. Cultural directions are printed on each packet of seed.

1012	<b>ACHILLEA, The Pearl.</b> Large double white flowers in clusters; 2 feet. Per 1,000 seeds, 75c.	Pkt.	1670	<b>Canterbury Bells. Single Mixed.</b>	Pkt.
1045	<b>AGROSTEMMA Coronaria</b> "Rose Champion." Mixed colors.	\$0.15	1660	<b>Double Mixed.</b>	\$0.10
1057	<b>ALYSSUM, Saxatile Compacta.</b> Clusters of deep pure yellow flowers; ¾ foot. Per ¼ oz., 35c.	.10		<b>CARNATION.</b>	
1052	<b>AMPELOPSIS, Veitchii.</b> Boston or Japanese Ivy, hardy climber, clinging to walls; 30 feet	.10	1760	<b>Hardy Garden, Double Mixed.</b> Sown this summer will bloom next summer. Per 500 seeds, 75c.	.15
1057	<b>ANCHUSA Italica (Dropmore).</b> 4 to 5 feet high, with flowers of lovely Gentian blue. Height, 1½ to 3 feet.	.15	1858	<b>CERASTIUM Tomentosum (Snow in Summer).</b> White foliage and profusion white flowers. Pretty as an edging.	.15
1092	<b>ANEMONE, St. Brigid.</b> Large single and double flowers 3 to 5 inches	.10	1860	<b>CHEIRANTHUS Allioni. (Siberian Wallflower.)</b> Bright orange flowers	.15
1093	<b>ANTHEMIS Kelwayi.</b> Yellow daisy-like flowers.	.10		<b>CHRYSANTHEMUM Single Hardy.</b> The large flowering single white hardy Daisy— <i>Chrysanthemum Leucanthemum</i> ,	
	<b>AQUILEGIA (Columbine).</b> Very effective. Height, 1½ to 3 feet.	.10	1896	<b>Shasta Daisy.</b> White flowers 4 inches across. Plants, 2 to 2½ feet high.	.15
1150	<b>Henderson's American Hybrid Columbine.</b> Immense long-spurred single flowers; colors superb. Per 1,000 seeds, \$1.00.	.25		<b>CLEMATIS.</b>	
1170	<b>Single, Large-Flowering, Mixed.</b> Per 1,000 seeds, 35c.	.10	1957	<b>Paniculata.</b> Covered with pure white fragrant flowers. 12 feet	.10
1160	<b>Double-Flowering, Long Spurred Hybrids.</b> Beautiful long-spurred. Per 1,000 seeds, 75c.	.25		<b>COREOPSIS.</b>	
1153	<b>Chrysantha.</b> The beautiful yellow variety	.10	1992	<b>El Dorado.</b> Brilliant golden yellow. Per 500 seeds, 50c.	.10
1157	<b>Coerulea Hybrids.</b> Rocky Mountain, long-spurred flowers of white and blue.	.10	1994	<b>Harvest Moon.</b> Plants 2 to 3 feet high; rich yellow flowers.	.10
1173	<b>ARABIS, Alpina.</b> A very useful, hardy plant for rockeries; pure white flowers. Height, 6 inches.	.10	2030	<b>COWSLIP.</b> Fragrant flowers, yellow, brown, edged yellow, etc. Height, 6 inches. Per 1,000 seeds, 75c.	.15
1185	<b>ARISTOLOCHIA Sipho,</b> Dutchman's Pipe Vine. Hardy climber; has large leaves, making dense shade; 30 feet.	.10		<b>DELPHINIUM New Double Flowering, or Hardy Larkspur.</b> The plants are of striking beauty and are becoming more popular every year and are indispensable in the hardy perennial border for blooming during the early summer months. The following named varieties are very desirable.	
	<b>ASTER, Hardy, New Large Flowering.</b> These "Michaelmas Daisies" form large bushy clumps, 1 to 2 feet high.	.25	2091	<b>Admiral Cardigan.</b> Brilliant blue marbled rose	.25
1462	<b>Farreri.</b> Many blooming, mauve with golden disc	.15	2092	<b>Amos Perry.</b> Rosy mauve flushed sky blue	.25
1464	<b>Alpinus Gollath.</b> Lilac with yellow	.15	2093	<b>Blue Mist.</b> Pale blue and lavender, white eye	.25
1466	<b>White Queen.</b> White single flowers	.15	2094	<b>Capt. Lambton.</b> Rich plum color edged violet	.25
1468	<b>Wartburg Star.</b> Lavender-blue, yellow center	.25	2095	<b>Coronation.</b> Rich purple and deep blue	.25
1470	<b>Hardy Asters, Mixed Colors.</b> Per 1,000 seeds, 60c.	.10	2096	<b>Summer Sky.</b> Light sky blue with white eye	.25
1478	<b>AUBRETTIA, Hybrids Mixed.</b> A lovely mauve spring blooming plant; produces great masses of bloom. Hardy and easily grown.	.25	2097	<b>Collection of above six named varieties.</b>	1.00
1480	<b>AURICULA, Mixed Colors.</b> Fine for indoor culture and rock gardens.	.25	2090	<b>Giant Single and Double Superb Hybrids.</b> Semi-double and double. Colors range from white and lavender through every shade of blue to indigo and purple. 6 to 10 feet in height. Mixed colors. Per 1,000 seeds, \$1.00.	.25
	<b>CAMPANULA Bell-Flower.</b> <i>Persicifolia grandiflora.</i> (Peach leaved Bell-Flowers.) Hardy, perennials with spikes 2 to 3 feet high; bearing bell-shaped blossoms.		2102	<b>Wrexham Hybrids.</b> These varieties represent the greatest advance made on the evolution of the Delphinium. Their graceful spire-shaped spikes of enormous size and great beauty of form has almost made them the most popular flowers, either for cutting or for garden display. The mixture we offer contains all colors usual in the Delphinium. Both double and single flowered varieties are included in this mixture, which is greatly esteemed by professional Delphinium growers.	
1632	<b>Blue.</b> .15	1634	<b>White.</b> .15		
1640	<b>Pyramidalis, Mixed Colors.</b> "Chimney Bell Flower," a hardy biennial—blue and white; height 4 to 5 feet.	.15		2084	<b>Blue Butterfly.</b> Beautiful blue variety of compact growth, blooms the first year if sown early. Height, 18 inches.
1650	<b>Pyramidalis compacta, Mixed Colors.</b> Compact in growth—height only 2 to 3 feet.	.25		2087	<b>Formosum.</b> Deep blue, white centre; 2 to 3 feet. Per 1,000 seeds, 75c.
	<b>CANDYTUFT, Hardy.</b> Borders or beds.				
1704	<b>Gibraltarica.</b> Showy, large-growing, rose-white; 1 to 2 feet. Per 1,000 seeds, 50c.	.10			
1708	<b>Sempervirens.</b> Covered with white flowers in spring; 1 foot. Per 1,000 seeds, 60c.	.15			
	<b>CANTERBURY BELLS.</b> The Cup and Saucer single flowers, 3 inches across. Hardy biennial.				
	<b>Calycanthemum "Cup and Saucer" varieties.</b>	.10			
1622	<b>Blue.</b> .10	1626	<b>Striped.</b> .10		
1624	<b>Rose.</b> .10	1628	<b>White.</b> .10		
1630	<b>Mixed.</b> Per 1,000 seeds, 50c.	.10			
				2150	<b>Plumarius, double mixed.</b> The favorite Pheasant's Eye or Grass Pinks. Per 1,000 seeds, 50c.

Our Free Booklet, "A Hardy Perennial Flower Garden from Seeds" Sent Free with Every Order of Seeds if Requested.

<b>DIGITALIS</b> or Foxglove	Pkt.	<b>PANSY</b> Butterfly, Trimardeau, Ruffled, etc., etc. (See page 20.)	Pkt.
2170 <b>Gloxinia-Flowered.</b> 4 to 5 feet high. Gloxinia-like flowers of various colors. <b>Mixed.</b> Per 1,000 seeds, 35c.....	.10	3410 <b>PHLOX</b> Decussata. (Hardy.) Mixed colors. (Per 1,000 seeds) \$1.00.....	.15
2180 <b>Montrosa.</b> Flowers 4 inches across, scarlet with gold edge, blood-red with yellow edge. <b>Mixed Colors.</b> Per 1,000 seeds, 50c.....	.15	3415 <b>PHYSALIS</b> Francheti. (Chinese Lantern Plant.) Ornamental orange scarlet fruits.....	.15
<b>GAILLARDIA</b>		3420 <b>PLATYCODON</b> Grandiflora. (Chinese Bell Flower). Bell-shaped flowers, handsome for garden decoration; 1½ feet. <b>Mixed colors</b> .....	.10
2250 <b>Giant Hardy Hybrid.</b> Flowers 4 inches across, scarlet gold edge, blood-red yellow edge, orange and many others. <b>Mixed.</b> Per 500 seeds, 50c.....	.10	3425 <b>Nana Compacta.</b> Mixed colors. 12 inches high.....	.15
2288 <b>GEUM, Mrs. Bradshaw.</b> A large double strain, bears brilliant crimson-scarlet flowers. Height, 2 feet.....	.25	3430 <b>POLYANTHUS</b> (Primula Elatior.) An early blooming Primrose for beds or pot culture. <b>Mixed colors</b> .....	.25
2364 <b>GYPSOPHILA</b> Paniculata. Graceful feathery foliage and white flowers. Per 1000 seeds, 75c.....	.10	<b>POPPY GIANT ORIENTAL.</b> Height, 2 to 3 feet; flowers 6 inches across.	
2362 <b>Double-Flowering</b> ( <i>G. paniculata fl. pl.</i> ). Double white flowers; 50% will come double, the balance single. Per 1000 seeds, \$1.00.....	.25	3482 <b>Beauty of Livermore.</b> Crimson with black blotch.....	.15
2371 <b>HELENIUM</b> Bigelowii. Flowers golden yellow. Height 2 feet.....	.25	3485 <b>Princess Victoria Louise.</b> Salmon-scarlet.....	.15
2372 <b>HELENIUM</b> Riverton Gem. Flowers golden orange. Height 3 feet.....	.25	3487 <b>Rembrandt</b> —Orange-scarlet.....	.15
2405 <b>HEUCHERA, Sanguinea.</b> Alum Root. Flowers are a beautiful red. Bloom all summer. Height, 2 feet. Per 1,000 seeds, 75c.....	.25	3490 <b>Mixed Colors.</b> Per 1,000 seeds, 60c.....	.10
2407 <b>HIBISCUS, Giant Crimson.</b> Brilliant flowers 6 inches in diameter. Height of plant, 5 feet.....	.25	<b>POPPY ICELAND.</b> The fragrant flowers are produced from June to October.	
<b>HOLLYHOCK, Hardy Double.</b> Grand summer and autumn flowering plants, bearing long spikes of double flowers 3 to 4 inches across. 5 to 8 feet high.		3480 <b>Mixed Colors.</b> Per 1,000 seeds, 50c.....	.10
2423 <b>Canary Yellow.</b> .....	.10	3545 <b>PRIMULA JAPONICA HYBRIDS.</b> Colors white to pink and crimson.....	.25
2424 <b>Crimson.</b> .....	.10	<b>PYRETHRUM Hybridum.</b> Flowers 3 inches across of rose, flesh, pink, white, crimson, etc.; 2 feet high.	
2426 <b>Lavender.</b> .....	.10	3555 <b>Double, Large-flowering.</b> <b>Mixed.</b> Per 1,000 seeds, 75c.....	.25
2427 <b>Maroon.</b> .....	.10	3560 <b>Single, Large-flowering.</b> <b>Mixed.</b> Per 1,000 seeds, 50c.....	.15
2440 <b>Extra Choice Double Mixed.</b> From named varieties. Per 500 seeds, 50c.....	.10	3636 <b>SAXIFRAGA.</b> <b>Mixed Colors.</b> Known as "Rockfool," mossy leaves invaluable for rockeries, stone walls, etc., etc.....	.25
<b>Imported Collections of Double Hardy Hollyhocks.</b>		<b>SCABIOSA Hardy Varieties.</b>	
2441 6 separate colors.....	.50	3657 <b>Causasia Perfecta.</b> Lilac-blue flowers 3 inches across on stalks 1 to 2 feet. Per 500 seeds, 75c.....	.15
2455 <b>Single Flowering Hollyhocks,</b> mixed colors. Per 500 seeds, 25c.....	.10	3658 <b>Japonica.</b> 2½ feet. Flowers 2 inches across, beautiful mauve blue.....	.10
2460 <b>Allegheny Hollyhocks.</b> Mixed, semi-double fringed flowers. Per 500 seeds, 50c.....	.10	3676 <b>SEDUM</b> ACRE Stone Crop. No rockery is complete without this plant. Perennial. Per 1,000 seeds, 75c.....	.25
<b>LATHYRUS Latifolius.</b> Hardy Everlasting Peas. 6 to 8 feet high, trained on a trellis; flowers in clusters.		3762 <b>STOKESIA</b> Cyanea. Hardy blue cornflower. Per ¼ oz., 35c.....	.10
2607 <b>Red.</b> .....	.10	4440 <b>SWEET ROCKET</b> or Dames Violet. Resembling Stocks. Colors white, lilac, pink and purple, mixed colors.....	.10
2610 <b>Mixed Colors.</b> Per ounce, 75c.....	.10	<b>SWEET WILLIAM</b> ( <i>Dianthus barbatus</i> ). Henderson's Perfection. Large florets in a great variety of rich colors. 1 foot high.	
2622 <b>LIATRIS.</b> ( <i>Blazing Star</i> .) Flowers rosy purple. Height, 3 feet.....	.25	4455 <b>Double large-flowering mixed.</b> Per 1,000 seeds, 60c.....	.10
2468 <b>LUNARIA</b> Biennis. "Honesty," flowers followed by silvery seed pods. Height, 2 feet. <b>Mixed.</b> .....	.10	4459 <b>Pink Beauty.</b> Large single pure pink.....	.10
2645 <b>LOBELIA</b> Cardinalis. ( <i>Cardinal Flower</i> .) Long spikes of scarlet flowers. Per 1000 seeds, \$1.00.....	.25	4462 <b>Scarlet Beauty.</b> Large single scarlet.....	.10
2670 <b>LUPINUS, New Hardy Hybrids.</b> Showy, hardy perennials, 3 to 4 feet. Pea-like flowers in variety of colors. Per ounce, 75c.....	.15	4467 <b>Harlequin.</b> Large flowers of several colors produced on one plant.....	.10
2675 <b>LYCHNIS</b> Chalcedonia. An old-favorite bearing heads of scarlet flowers; hardy 3 to 4 feet.....	.10	4470 <b>Extra Choice Single Varieties Mixed.</b> Per 1,000 seeds, 25c.....	.10
2854 <b>MYOSOTIS</b> Palustris. The popular old-fashioned blue Forget-me-not. Per 1,000 seeds, 50c.....	.10	4482 <b>TRITOMA</b> UVARIA, "Red Hot Poker Plant." Height, three feet. Tall spikes of orange and crimson red flowers very effective.....	.15
<b>PENSTEMON</b>		4480 <b>New Hybrid.</b> Yellow, orange, salmon-pink, coral-red, crimson.....	.25
3283 <b>Excelsior.</b> A new variety, colors from white to deep scarlet.....	.25	4535 <b>PANSY-VIOLETS, Tufted or Bedding.</b> ( <i>Viola cornuta grandiflora hybrida</i> ), blossoms, 2 inches across, of brilliant colors. The plants form clumps. Many are scented. Mixed colors. Per 1,000 seeds, 60c.....	.15
3285 <b>Sensation.</b> 2 feet high. Colors vary from pink to scarlet and maroon, all large white throats.....	.15	<b>WALL FLOWERS.</b> Bush perennial plants, 1½ feet high, fragrant flowers.	
		4550 <b>Large Double. Mixed colors.</b> Per 1,000 seeds, 60c.....	.15
		4565 <b>Large Single. Mixed colors.</b> Per 1,000 seeds, 35c.....	.10

## Henderson's "Hardy-Border" Collection of Flower Seeds

4715 Seventeen Packets of Hardy Perennials \$1.25 Postpaid



There is a lasting quality about perennials because they renew their beauty every spring, and if a good selection is made, they will keep a garden a-bloom all the season. A number of annuals should also be grown in bare places until the perennials attain full growth and begin to flower.

This collection consists of 17 of the most popular and easily grown sorts which will bloom the year following the sowing of seed. A few, including Coreopsis, Gaillardia, etc., often flower the same year, if the seed is sown early in spring.

Perennial flower seed can be sown from early spring to about August 1st in the latitude of New York.

2440 <b>Hollyhock.</b> Hardy Extra Choice Double Mixed.....	Pkt. .10	3657 <b>Scabiosa.</b> Hardy 2 to 3 feet high. Flower semi-double, lilac-blue.....	Pkt. .15
2854 <b>Myosotis, Palustris.</b> .....	Pkt. .10	1057 <b>Alyssum</b> ( <i>Saxatile Compacta</i> ) Pkt.....	.10
2090 <b>Delphinium.</b> Henderson's Single and Double Superb Hybrids. Mixed colors.....	Pkt. .25	1994 <b>Coreopsis</b> "Harvest Moon".....	Pkt. .10
3560 <b>Pyrethrum Hybridum,</b> or Painted Daisy. Mixed colors.....	Pkt. .15	3490 <b>Poppy.</b> Giant Oriental. Mixed colors.....	Pkt. .10
4455 <b>Sweet William.</b> Henderson's Perfection Double Large-flowering. Mixed.....	Pkt. .10	1150 <b>Aquilegia,</b> or Columbine. Mixed colors.....	Pkt. .25
3410 <b>Phlox Hardy.</b> Large-flowering Hybrid. Mixed.....	Pkt. .15	2250 <b>Gaillardia.</b> Giant Hardy Hybrid. Mixed colors.....	Pkt. .10
1670 <b>Canterbury Bells.</b> Mixed.....	Pkt. .10	1760 <b>Carnation.</b> Hardy Garden. Finest Double Mixed.....	Pkt. .15
2170 <b>Digitalis,</b> or Fox-glove. Mixed colors.....	Pkt. .10	1470 <b>Asters Hardy.</b> New Large Flowering. Mixed colors.....	Pkt. .10
		1896 <b>Chrysanthemum</b> ( <i>Shasta Daisy</i> ).....	Pkt. .15

Pamphlet, "A Perennial Flower Garden From Seed," Sent with Every Collection.

### Pot-Grown Plants of the "Hardy-Border" Collection

**Special Offer**—We will send 1 plant each of the 17 varieties for \$4.00 (3 plants each of 17 varieties for \$10.00; 6 plants each of 17 varieties for \$19.50. (See page 18 of our plant catalogue).

# SELECTED PANSY SEED

For Summer and Autumn Sowings

**Growing Pansies from Summer and Autumn-Sown Seed.** Sow the seed in July, August or the early part of September in the open ground on a finely prepared seedbed sheltered from hot sun, or protect with a light covering of hay or straw or even burlap, to keep the ground moist until the seedlings are up. Thin the seedlings to 3 or 4 inches apart—in about 6 weeks the young plants can be removed to their permanent flowering quarters, where they must be again covered with hay to a depth of about 3 inches after freezing weather sets in. Another way to winter over autumn-grown seedlings is to transplant them 3 or 4 inches apart according to their size into coldframes, and transplant to flowering quarters as early in the spring as possible.

The Pansy is hardy with slight protection, and thrives best when grown cool.

### MAMMOTH BUTTERFLY!

This "Butterfly" race originated from selections made by the late Peter Henderson—who was particularly fond of Pansies—from the best American, English, Scotch, French and German varieties. This process of selection has been followed by us ever since, and from the legion of "most beautiful" Pansies among Henderson's Butterflies we have chosen this offering.

**3120 Henderson's Mammoth Butterfly Pansies in Mixed Colors.**

Per 1000 seeds, \$1.00; Pkt., 25c.

### GIANT MOTTLED

Well-grown they measure 3 to 3½ inches across—and of most gorgeous effects, blotches, spotted, marbled, veined, striped and blended colors passing through reds, rose, pink, white, purple, in beautiful and indescribable variegation.

**3150 Mixed Colors.** Per 1000 seeds, \$1.00; Pkt., 25c.

### BUGNOT'S LARGE STAINED FRENCH

These Pansies are distinguished by their varied colors and strong markings. There is a large "blotch" on each of the five petals, with a band of some strikingly contrasting color, over all of which is thrown a cobweb like netting of yet another hue.

**3110 Mixed Colors.** Per 1000 seeds, 75c; Pkt., 15c.

### POPULAR STRAINS

**3100 Bedding.** Finest Mixed. Per 1000 seeds, 25c; Pkt., 10c.

### GIANT RUFFLED

The broad petals seem to be "gathered" to the stem, causing them to be fluted from center to circumference, not unlike "frilled" velvet. The unusual substance of the flowers, enables them to present bold, open and handsome faces, during windy or dry summer weather, when other Pansy flowers droop or wilt. The flowers are borne on strong stems well above the foliage and contain rich combinations of coloring not found in other Pansies.

**3170 Mixed Colors.** Per 1000 seeds, \$1.00; Pkt., 25c.

### SWISS GIANT or Roggli's Hybrids

These varieties were raised by a Pansy Specialist in Switzerland and have created a decided sensation in floricultural circles. The plants are very robust, and the enormous flowers of heavy texture are carried on strong stems well above the leaves. We have pleasure in offering to our customers, the very distinct varieties described below.

**3172 Mixed Colors.** Per 1000 seeds, \$1.00. Pkt., 25c.

**3173 Cardinal Shades.** This is a selection of many red and crimson sorts. Pkt., 35c.

**3174 Lake of Thun.** This is an exquisite color, a rich ultra-marine blue, having a darker blue blotch on the petals. Pkt., 35c.

**3175 Rheingold.** The most intense yellow Pansy evolved so far. Pkt., 35c.

The three lower petals carry a brown blotch. Pkt., 35c.

**3175A. Silver Bride.** Silver white with large blotches. Pkt., 35c.

### SUPERIOR GIANT TRIMARDEAU

Years of scientific hybridization and selection in raising Pansies have gradually evolved a superior race of robust growth.

	Per 1000 Seeds	Pkt.
<b>3176 Aurora.</b> Crimson purple shading to light wine, with a defined white margin.	\$0.60	\$0.10
<b>3178 Bridesmaid.</b> White shaded rose beautifully blotched.	.60	.10
<b>3182 Canary Bird.</b> Pure spotless yellow.	.60	.10
<b>3186 Indigo-Blue.</b> Blotched black.	.60	.10
<b>3192 King of the Blacks.</b> Lustrous jet-black.	.60	.10
<b>3196 Lord Beaconsfield.</b> Lavender and heliotrope.	.60	.10
<b>3207 Meteor.</b> Rich, reddish-brown or mahogany.	.60	.10
<b>3214 Peacock.</b> (Gloriosa.) Garnet, cream and blue.	.60	.10
<b>3216 President Carnot.</b> White with large violet blotches.	.60	.10
<b>3217 Prince Charming.</b> Rosy red, veined lilac.	.60	.10
<b>3218 Purple.</b> (Atropurpurea.) Velvety royal-purple.	.60	.10
<b>3222 Snow Queen.</b> Spotless snow-white.	.60	.10
<b>3226 Striped.</b> White, blue, violet and chocolate.	.60	.10
<b>3227 Victoria.</b> Very distinct; clear oxblood.	.60	.10
<b>3234 White Treasure.</b> White with three violet blotches.	.60	.10
<b>3238 Giant Yellow.</b> Golden with mahogany eye.	.60	.10
<b>3240 Mixed Colors.</b> Per Oz., \$4.00.	.50	.10

**3241 Henderson's Collection of 12 Giant Trimardeau Pansies.**  
One packet each of 12 varieties. Price, \$1.00

### WORLD RECORD Early Flowering Hardy

The flowers are of large size and are delicately fragrant—indicating the Violet strain in their make-up.

**3252 Celestial Queen.** Bright, sky-blue, tinted lavender, small yellow eye.

**3254 Ice King.** Silver white with deep blue blotch on lower petals.

**3256 March Beauty.** Rich velvety violet purple, with yellow eye.

**3258 Winter Sun.** Golden-yellow with maroon blotch on lower petals.

**3260 Mixed Colors.**  
Price of any of the above per 1000 seeds  
75c; Pkt., 15c.

**3261 Collection World Record Pansies.**  
One pkt. each of above 4 varieties. 50c.



## Rockeries and Rock Gardens

**4761 Collection of 15 varieties of perennial Flower seeds, \$2.00 Postpaid.**

Preparations for a Rock Garden must be made ahead, if perennials are used, as they do not bloom the first year. Seeds should be planted outdoors on the rock garden in the places they are to grow, early in spring and up to July 15th. We recommend planting Tulips and other bulbs in Rock Gardens in the fall to provide a show in spring. See Page 16.

**Alyssum Saxatile Compacta.** "Basket of Gold." Hardy plant, large flowers pure yellow, 9 inches high.

**Agrostemma Coronaria.** "Rose Champion." Mixed colors.

**Arabis Alpina.** A very useful, hardy plant for rockeries; pure white flowers. Height, 6 inches.

**Aubretia Hybrids Mixed.** A lovely mauve spring blooming plant; produces masses of bloom. Hardy and easily grown.

**Campanula Persicifolia Blue.** "Peach-leaved bell-flowers," large blossoms of blue or white, 2 to 3 feet high.

**Candytuft Gibraltarica.** Blooms early, hardy, large flowers red and rose-white, 12 to 18 inches high.

**Candytuft Sempervirens.** Blooms early in spring.

**Cerastium Tomentosum.** "Snow in Summer." Of sprawling habit; white leaves and white flowers.

**Cowslip.** Spring flowering, hardy, bears fragrant flowers.

**Delphinium Blue Butterfly.** Beautiful blue variety of compact growth, blooms the first year if sown early. Height, 18 inches.

**Geum Mrs. Bradshaw.** A large double strain, bears brilliant crimson-scarlet flowers. Height, 2 feet.

**Heuchera. Alum Root.** Flowers are a beautiful red. Bloom all summer. Height, 2 feet.

**Myosotis Puiustris.** The popular blue Forget-me-not.

**Sedum Acre (Stone Crop.)** Beautiful yellow flowers.

**Saxifraga Mixed Colors.** Known as "Rockfoil," mossy leaves invaluable for rockeries, stone walls, etc., etc.





# MOWERS, GARDEN HOSE, SPRINKLERS, Etc.

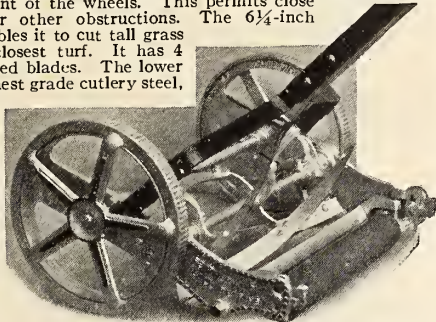
**SPECIAL NOTICE**—We prepay transportation charges where noted, by parcel post, express, or freight at our option within the first and second zones (150 miles of New York City). Purchasers beyond these zones pay transportation charges on all other items not so noted. We guarantee the safe delivery of all implements and requisites shipped by parcel post or express in the United States.

## The Henderson "Featherweight" Lawn Mower

The Lightest and Easiest Running Mower in the World. Leaves the Lawn Like Velvet

The wheels are 10 inches in diameter; this permits the mower to roll over rough or uneven surfaces without lessening its cutting efficiency. Another feature that is exclusive in the Henderson "Featherweight" is that the knife is close to the outer point of the wheels. This permits close cutting around trees or other obstructions. The 6 1/4-inch diameter of the reel enables it to cut tall grass as well as to clip the closest turf. It has 4 crucible steel, oil-tempered blades. The lower blade is made of the highest grade cutlery steel, hardened, tempered and ground, so that the mower always remains sharp.

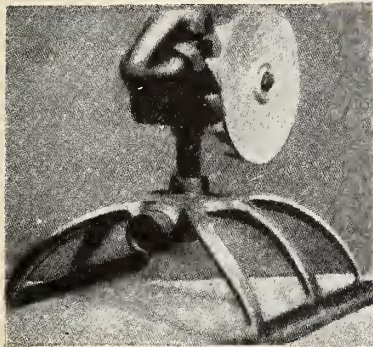
Price, 14-inch cut, weight 35 lbs. \$13.50  
 Price, 16-inch cut, weight 36 lbs. 14.50  
 Price, 18-inch cut, weight 37 lbs. 15.50  
 Grass Catchers for any of the above Mowers, \$2.50 each.  
 Delivered transportation paid. See Special Notice above.



The Henderson "Featherweight" Mower

## DOUBLE ROTARY SPRINKLER The Next Best Thing to Rain

The latest model Double Rotary Sprinkler embodies improvements which make it, more than ever, the ideal sprinkler whether for lawns, gardens, golf courses, ball parks, nurseries, orchards or public parks.



Double Rotary Sprinkler

It is constructed of the best materials, machined for long wear; wheel of cast aluminum will not rust. The steel and bronze gears run in a bath of oil. The nozzle is adjustable for fine or coarse spray, and permits covering small or large area without reducing volume. Skid base permits moving while in operation. Cannot tip over on any pressure. All wearing parts enclosed. Very successful for overhead systems; covers diameter of fifteen to eighty feet, according to pressure. Price, \$12.50. Transportation paid.

## New Fan Shower Sprinkler Nickel-Plated

Throws a wide, fan-shaped, gentle shower. Valuable for hotbeds, greenhouses and gardens. Width, 5 1/4 inches. Price, 60c. Transportation paid.

## Henderson's "Best Para" Rubber Hose

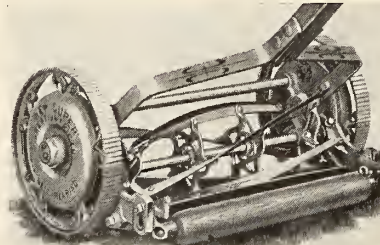
This is the highest grade of garden hose, being made entirely from New Para Rubber and will outlast cheap hose three times over. We guarantee it to stand a 300-lb. water pressure, and it will be as resilient in three or four years' time as when new, while cheap hose of that age will be hard and rotten. Every length of Henderson "Best Para" Hose is fitted with the new water-tight couplings, without extra charge. (See illustration.)



Hose is furnished only in 25-foot and 50-foot lengths.  
 Prices, 3/4-in. bore Para, per 25-foot length, \$4.75; per 50-foot length, \$9.00.  
 Delivered transportation paid. See Special Notice above.

## Pennsylvania Super "Great American" Lawn Mower

A popular high quality Mower; 5-cylinder blades; self-sharpening; 10-inch high wheels; easy-running Mower. Ball bearing.



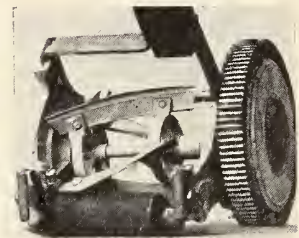
	Price	Grass Catcher
15 in. . . . .	\$17.00	\$1.50 extra
17 in. . . . .	19.00	2.00 extra
19 in. . . . .	21.00	2.00 extra

Delivered transportation paid. See Special Notice above.

## Universal Lawn Trimmer

For trimming grass close up to the fence or wall, thus reducing hand work with shears to a minimum. It will also be found handy for trimming up around trees, under bushes, etc. It cuts 6 inches in width.

Price, \$8.50. Delivered transportation paid. See Special Notice above.



Universal Lawn Trimmer

*We stock repair parts for all Henderson's Horse and Hand Power Lawn Mowers. In ordering parts, send width of cut and number cast on inside of wheel*

## The Henderson "Allover" Sprinkler

Three patented sprinkler nozzles are attached to two sections of high quality rubber hose each fifteen feet long. This permits great flexibility allowing the outfit to be laid straight, in a circle or at any angle desired.

When laid straight—with average pressure—it will sprinkle thoroughly an area about fifty feet long and twenty feet wide. The nozzles break the water into a very fine mist which will penetrate into but not wash the soil. It is therefore safe to use even on a newly planted lawn.

If it is necessary to irrigate a very small section of the garden only, two of the nozzles may be removed and only the end one used. This is the most practical and efficient sprinkler system that has ever been offered. Price complete, \$5.50

Extra 15-foot section of hose with couplings, \$1.50.  
 Extra Connecting Nozzles, 80c each.  
 Extra End Nozzles, \$1.00 each.  
 Transportation paid.



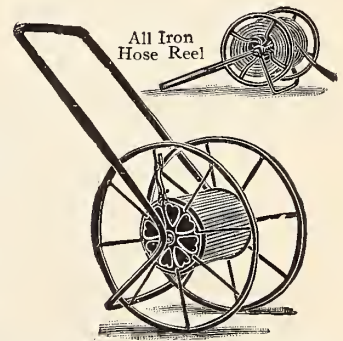
The Henderson "Allover" Sprinkler



## All Iron Hose Reel

The All Iron Hose Reels are indestructible, light in weight, frictionless and are easily manipulated. These reels cannot tip over when unreeled, and there is no weight of hose to carry on the handle.

Prices:  
 No. 10. 21-in., holds 100 feet 3/4-in. hose . . . . . \$2.25  
 No. 20. 24-in., holds 150 feet 3/4-in. hose . . . . . 5.50  
 No. 30. 30-in., holds 500 feet 3/4-in. hose . . . . . 8.75  
 Purchaser pays transportation.



# HENDERSON'S BANNER Compressed Air Sprayer

None Better for the Medium Size Garden or Small Orchard

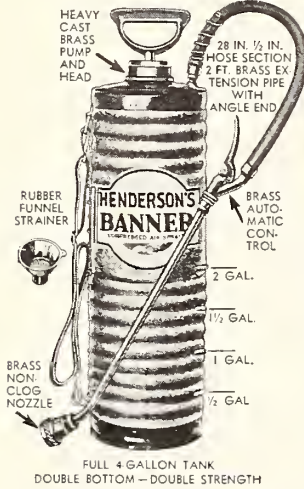
The tank is made of heavy solid copper or heavy galvanized steel, double seamed and well riveted, to stand heavy pressure. Tank has double bottom.

For use in Spraying Orchards, Flower and Vegetable Gardens, Vineyards, Field Crops and Lawns; also for Spraying Whitewash, Water Paints, Disinfectants, etc. Very effective in removing wallpaper.

**Pump**—Heavy seamless brass with cast brass pump head. Pump screws into center of tank and a few strokes of the pump charge the tank with compressed air, and by releasing the lever control, spray pours forth in a fine broad mist, or long distance spray according to the adjustment of nozzle. Each pump is equipped with shoulder strap adjustment.

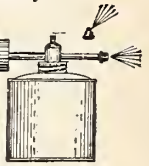
**Hose**—2 feet of 1/2-inch best grade, with coil spring to prevent breaking when not in use, and in addition a brass rod 2 feet long with angle neck to allow easy spraying underneath leaves. **Nozzle**—Automatic, non-clog.

**Henderson's Banner Sprayer, Copper tank capacity about 4 gallons, with Rubber Funnel Strainer. \$9.25**  
**Henderson's Banner Sprayer, Galvanized tank capacity about 4 gallons, with Rubber Funnel Strainer. 6.25**  
**Henderson's Banner Sprayer Junior Galvanized Tank Capacity 2 1/2 gallons. 4.00**



## Compressed Air Atomizer and Sprayer

Delivers a continuous fog-like spray. Is fitted with straight and Under Leaf nozzles, making a perfect under-leaf sprayer. In fact, spray can be delivered at any angle or position desired. Made in solid sheet copper, highly polished, holds 1 quart. Price, \$2.00. Transportation paid.



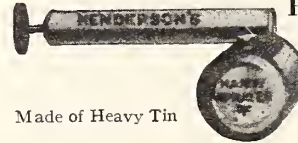
## Improved Cortlandt Continuous Sprayer



Two brass nozzles, one for spraying straight ahead, the other for under-leaf spraying. Slow easy pumping maintains large, continuous unbroken spray. Easy for man or woman to operate. Sprays all insecticides on gardens, flowers, shrubbery, etc., disinfectants and fly spray. Large two-quart galvanized tank. This is a very handy and useful sprayer. Price, \$2.25. Transportation paid.

## Henderson's Handy Sprayer

It is substantially built of heavy tin and can be used for spraying all sorts of insecticides. Tank will hold one quart. Price, 50c. Transportation paid.



Made of Heavy Tin

## Henderson's Improved Powder Duster

This Duster is simple in construction and easy to operate. It is made from the highest quality of material and guaranteed to be perfect in operation, workmanship and material.

To operate Duster, remove screw nozzle cap, fill reservoir with dry powder. Screw cap on tightly. Take slow, steady strokes, which will give the proper spray. Duster can be held at any angle while operating. Price, \$1.25. Transportation paid.



Henderson's Improved Powder Duster

- Two-row Attachment for spraying 2 rows at one passing. . . . . 1.25
  - Brass Extension Rod, 2-ft. lengths, as many as 3 rods can be screwed together to reach tall trees. Each . . . . . .65
  - Brass Elbow for spraying under leaves. . . . . .40
  - Rubber Funnel Strainer for straining solution. . . . . .35
- Above prices transportation paid.

## Plant Setter and Bulb Planter

Will be found very efficient for planting all kinds of small plants and bulbs. Junior Model.

Price, 50c. Transportation paid.

The **Senior Model**, used from a standing position, has an adjustable feature that accurately controls various planting depths. An excellent tool for planting bulbs, plants or seedlings. Price, \$4.00 postpaid in 1st and 2nd Zones.



Junior Plant Setter



Senior Plant Setter

## Garden Gloves, Eezywear

All-Leather—Soft as Kid

Made from select imported leather processed to render it extra soft and pliable as well as durable. Give complete protection from dirt, bruises, scratches and stains.

**WASHABLE**

Sizes for women: small, medium and large. For men: medium and large. Price, 75c a pair (2 pairs, \$1.40), postpaid.



Eezywear Gloves

## Beetle Traps

**TYPE A**—Small container with a standard thread on bottom will fit any Mason jar. No jar furnished. The three fins or wings are so placed as to more evenly diffuse the bait aroma. Price with bait, 80c.

**TYPE B**—Large Container, same style as Type A, no jar furnished. Price, \$1.30 with Bait. Extra Bait for TYPE A, 20c. Extra Bait for TYPE B, 40c. Transportation paid.

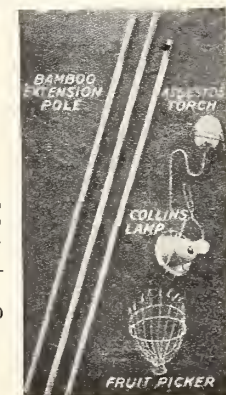


Beetle Trap

## FOR DESTROYING CATERPILLAR NESTS IN TREES

### Bamboo Extension Pole With Brass Connecting Sockets Caterpillar Lamp, Asbestos Torch

The **Bamboo Extension Pole** is made in 3 sections of 4 feet each and is securely connected with brass sockets, light and strong.



Price, \$1.25. Transportation paid. It can be used with **torch, lamp, or fruit picker.**

The **Asbestos Torch** is a galvanized wire basket filled with asbestos, when dipped in kerosene and lighted, is ready for use in destroying caterpillar nests in trees. Price, 60c. Transportation paid.

The **Collins Caterpillar Lamp** is constructed with a pan to catch the worms. Price, \$1.00. Transportation paid.

The **Fruit Picker**. Price, 50c, extension pole extra. Transportation paid.

## Plant Stakes, Wooden Purchaser pays transportation

Stakes—Round Green Tapering			Square Green Tapering		Round Dahlia Poles Green, White Tops		
Length	Doz.	100	Doz.	100	Length	Doz.	100
2 feet	\$ .50	\$3.75	\$ .50	\$3.75	2 feet	\$ .50	\$4.00
3 "	.90	6.50	.90	6.50	3 "	1.50	10.00
4 "	1.10	8.00	1.10	8.00	4 "	2.00	15.00
5 "	1.60	12.00	1.75	12.00	5 "	2.50	18.00
6 "	2.00	15.00	2.00	15.00	6 "	2.75	20.00

**Hardwood Stakes** Eight feet long; suitable for growing pole beans. Price, 35c each; \$3.50 per doz. Purchaser pays transportation.

## Imported Heavy Bamboo Stakes

These stakes are very strong and durable

	Per 100	Per 500		Per 100	Per 500
4 feet—Natural color. . . . .	\$3.00	\$12.50	8 feet—Natural color. . . . .	\$6.00	\$27.50
6 feet—Natural color. . . . .	4.00	18.50	20-foot sweeps, 35c each; \$3.85 doz.; \$30.00 per 100.		

Purchaser pays transportation.

## Light Japanese Cane Stakes, Dyed Green

For Delphinium, Gladiolus, etc. These stakes are thin, but very strong. Lots of 100 are delivered transportation paid within 150 miles of New York City. Beyond this zone purchaser pays transportation. On lots of 500 or more purchaser pays transportation.

	Per 100	500	Per 1000
2 feet. . . . .	.50	at	\$4.00
3 " . . . . .	.60	1000	4.50
4 " . . . . .	.75	rate	6.00
6 " . . . . .	1.50		11.75

# INSECTICIDES—FUNGICIDES and VERMICIDES

**NOTE**—Items on this page offered transportation paid are prepaid by us within first and second zones (150 miles of New York City), mail, express or freight at our option. Beyond these zones purchaser pays transportation charges.

Insects that suck the juices from plants, foliage, etc., such as lice, green, black and white aphid or fly, mealy bug, red spider and scale, must be destroyed by contact insecticides. Those in powder form kill by the breathing pores in the insect's skin; in liquid form, by being absorbed through their pores. The best contact insecticides in powder form are Hellebore, Slug Shot and Tobacco Dust. The best fluids are Aphine, Black-Leaf 40, Evergreen, Fish Oil Soap, Kerosene Miscible Oil, Red Arrow, etc. For San Jose, Oyster and Scurfy Scale, use Lime Sulphur, Scalecide, etc.

**ANT KILLER.** A very effective and much-needed product for use on lawns, sports turf, golf courses, etc.

Price, 4-oz. tin, 50c; per doz., \$5.50; estate size, 16 ozs., \$1.75. Transportation paid; see note top of page.

**ANTROL.** A highly efficacious control agent for Argentine and native species of ants. Ready filled set consisting of 4 feeders, complete, 40c.

Regular set, 4 jars and 4 ozs. syrup, 75c; 4 oz. syrup, 35c; 1 pt. syrup, 85c. Extra jar, 10c. Transportation paid; see note top of page.

**APHINE.** Very powerful. Applied as a spray, wash or dipping solution. It kills aphid, thrip, red spider, slugs, ants, mealy bug, and scale.

Price, 1 gill, 25c; ½ pint, 40c; 1 pint, 65c; qt., \$1.00; gal., \$3.00. Transportation paid; see note top of page.

**ARSENATE OF LEAD POWDER.** For dusting, mixed with Hydrated Lime or road dust or in liquid form. To kill most chewing insects on plants, trees, shrubs, etc.

Price, ½ lb., 25c; 1 lb., 40c; 5 lbs., \$1.50; 10 lbs., \$2.75; 25 lbs., \$5.00; 100 lbs., \$15.00. Transportation paid; see note top of page. Larger quantities, price on application.

**ARSENATE OF LEAD (Oleate Coated).** Kills Japanese Beetles. One spray lasts all season. Owing to the superior adhesive qualities of the oleate, it has proved extremely effective against Japanese and Asiatic Beetles, as also the Elm Leaf Beetle. It is not, however, recommended for fruits or vegetable crops, because it adheres so tenaciously. It gives lasting protection to ornamental trees and shrubs, one pound to 12½ gallons of water.

Price, 1 lb., 60c; 2½ lbs., \$1.25. Larger quantities, prices on application. Transportation paid; see note top of page.

**BLACK-LEAF 40.** One of the best-known and most widely-used products for the effective and economical control of sucking insects. For delousing poultry, "paint" Black-Leaf 40 on top of roosts.

Price, 1 oz., 35c; 5 ozs., \$1.00; 1 lb., \$2.25; 2 lbs., \$3.25; 5 lbs., \$5.85; 10 lbs., \$10.60. Transportation paid; see note top of page.

**BORDO AND ARSENATE OF LEAD POWDER.** A combined insecticide and fungicide, kills bugs and prevents many diseases, such as mildew, blight, rot and fungus. Can be used as a wet or dry spray.

Price, ½ lb., 30c; 1 lb., 50c; 5 lbs., \$2.50; 10 lbs., \$3.00; 25 lbs., \$6.50. Transportation paid; see note top of page. Larger quantities, price on application.

**BORDEAUX MIXTURE, POWDERED.** For blight, mildew, rust, etc. It has all the advantages of paste, with double the strength. Goes twice as far. Used for dry dusting or spraying. Dilute 1 pound to about 6 gallons of water for 3-3-50 formula.

Price, ½ lb., 25c; 1 lb., 40c; 5 lbs., \$1.50; 10 lbs., \$2.75; 25 lbs., \$5.50; 100 lbs., \$16.00. Transportation paid; see note top of page. Larger quantities, price on application.

**BOR-TOX.** A scientific preparation of paste that kills boring insects when injected into their burrows. Effective in killing larvae of the common stalk borer working in the stems of flowers and plants. 2-oz. tube, price 75c. Transportation paid; see note top of page.

**CUTWORM REMEDY.** See "Snarol."

**DERIDUST.** A ¾% rotenone dust, non-poisonous and more powerful than arsenate of lead in killing leaf-chewing and sucking insects. It controls cabbage worms, bean beetles, asparagus, cucumber, potato and flea beetles, leaf hoppers, thrips, red spider, aphid and others. Will not injure tender foliage.

Into Deridust is incorporated a product to act as a shield against the action of sunlight, and a unique adhesive is added to retain the Deridust on the foliage, including waxy leaf surfaces. This guards against loss of the insecticide by wind or rain. Recommended by state departments of agriculture for safe, efficient insect control.

Price, 1 lb., 50c; 5 lbs., \$2.25; 10 lbs., \$4.00; 25 lbs., \$8.75; 50 lbs., \$16.25; 100 lbs., \$30.00. Transportation paid; see note top of page.

Insects that eat plants, foliage, vegetables, fruits, flowers, etc., whether bugs, beetles, worms, caterpillars or slugs, are more quickly and effectually destroyed with a poisonous stomachic insecticide, such as Arsenate of Lead or Hellebore. Less poisonous stomachic and contact insecticides are Deridust, Evergreen, Kerosene Miscible Oil, Red Arrow, Slug Shot, etc. For ground insects, cut worms, grubs, etc., use Snarol or Vermine. For blights, rust, black spot and fungus diseases, use Bordeaux Mixture, Fungine, Fungitrogen, Pyrox, etc.

DIRECTIONS for using any of the following will be found on each package.

**EVERGREEN (NON-POISONOUS).** New Improved with Spreader. Will not injure or discolor the most tender plant; HARMLESS to man, birds and animals, yet deadly to sucking and chewing insects, such as aphid, thrip, rose bug and bean beetles. One ounce makes up to six gallons of spray.

Price, 1 oz., 35c; 6 ozs., \$1.00; 16 ozs., \$2.00; gal., \$12.00; 5 gals., \$50.00. Transportation paid; see note top of page.

**FISH OIL SOAP (WHALE OIL SOAP).** A wash for insects and eggs on the bark, and for smearing the trunks of trees to prevent worms from crawling up.

Price, 1 lb., 30c; 5 lbs., \$1.25; 10 lbs., \$2.25; 25 lbs., \$4.00; 100 lbs., \$13.00. Transportation paid; see note top of page.

**FUNGTROGEN.** Controls mildew, black spot and many fungus diseases of roses and other plants. A highly concentrated fungicide, invisible on the foliage or blooms. It is combined with a plant stimulant. To use, mix with water 60 times its volume.

Price, ½ pt., 75c; pt., \$1.25; qt., \$2.00; gal., \$6.00. Transportation paid; see note top of page.

**GRAPE AND ROSE DUST.** For black spot on roses, powdery mildew on grapes and flowers, blights and leaf-eating insects.

Price, 1 lb., 40c; 5-lb. pkt., \$1.50. Transportation paid; see note top of page.

**HELLEBORE, POWDERED WHITE.** Less poisonous than Paris Green and Arsenate of Lead, and safer to use when fruits or vegetables are nearly ripe. Can be used as a powder or dissolved.

Price, ½ lb., 30c; lb., 50c; 5 lbs., \$2.25. Larger quantities, prices on application. Transportation paid; see note top of page.

**IMPERIAL SOAP SPRAY.** Does not spot fruit or foliage or deface paint work. Very effective against rose bug, white, black and green fly, red spider, thrips and aphid.

Price, 1 pt., 60c; 1 qt., \$1.00; 1 gal., \$3.00; 5 gals., \$12.00. Transportation paid; see note top of page.

**INSECT SPRAY, HOUSEHOLD.** Non-poisonous; will not stain. Will exterminate the household fly, moth, mosquito, bedbug, ant, roach, and is a general insect spray. Do not spray on foliage.

Price, 8-oz. can, 50c; 1-pt. can, 70c; 1-qt. can, \$1.20; 1-gal. can, \$3.00.

Transportation paid; see note top of page.

**KEROSENE MISCIBLE OIL.** Better than Kerosene Emulsion. Is especially valuable against all soft-bodied insects.

Price, 1 pt., 50c; 1 qt., 75c; 1 gal., \$2.00; 5 gals., \$8.00. Transportation paid; see note top of page.

**LIME SULPHUR SOLUTION.** For scale insects on trees and such fungus bark diseases as can be treated in winter. Dilute and spray with a spray pump while trees are dormant, in fall, winter or spring.

Price, 1 qt., 50c; gal., \$1.25; 5 gals., \$4.00; 30 gals., \$11.00; 50 gals., \$15.00. Transportation paid; see note top of page.

**LIME SULPHUR (POWDERED).** For dormant spraying of fruit and shade trees and bushes against San Jose and Oyster Shell Scales; also for peach leaf curl and brown rot of peaches. 1 pound makes 3½ to 5 gallons.

Price, 1 lb., 40c; 5 lbs., \$1.50; 25 lbs., \$5.00; 100 lbs., \$16.00. Larger quantities, prices on application. Transportation paid; see note top of page.

**MAGNESIUM ARSENATE.** Used for the elimination of bean beetles, caterpillars, etc. For wet spraying, 1 pound to 50 gallons water. Care should be taken that the underside of the leaves are thoroughly sprayed. For dry spray, add 4 pounds Hydrated Lime to each 1 pound and dust four times during the growing season.

Price, 2 lbs., 80c. Transportation paid; see note top of page.

**MO-LO (Poisoned Tablet).** Exterminates moles and field mice.

Price, 25c per box of 12 tablets; \$2.75 per doz. boxes. Transportation paid; see note top of page.

**MOLOGEN.** Eliminates moles from the lawn within 2 or 3 days; non-poisonous to humans or pets. Per ½-lb. can, 50c; 1½-lb. can, \$1.25. Transportation paid; see note top of page.

**NOTE**—Insecticides, Fungicides and Vermicides can now be mailed, in accordance with the revised Postal Laws and Regulations. See special notice top of page.

# INSECTICIDES—FUNGICIDES and VERMICIDES *(Continued)*

**NOTE**—Items on this page offered transportation paid are prepaid by us within first and second zones (150 miles of New York City), mail, express or freight, at our option. Beyond these zones, purchaser pays transportation charges.  
**DIRECTIONS** for using any of the following will be found on each package.

**NAPHTHALENE FLAKES.** For thrip on Gladiolus Bulbs. Apply 1 ounce to 100 bulbs in a tight box or receptacle. Also dust bulbs at planting time.  
 Price, 1 lb., 25c; 5 lbs., 75c; 25 lbs., \$3.50; 100 lbs., \$12.00. Transportation paid; see note top of page.

**NICO-FUME (Liquid).** For vaporizing and spraying.  
 Price, 1 lb., \$2.25; 4 lbs., \$5.75; 8 lbs., \$10.00. Transportation paid; see note top of page.

**NICO-FUME PAPER.** Price, box of 24 sheets, \$1.25; box of 144 sheets, \$4.50; box of 288 sheets, \$8.00; transportation paid; see note top of page.

**NICO-FUME POWDER FUMIGATOR.** Use one Pressure Fumigator to about 25,000 to 30,000 cubic feet of Greenhouse space, or four (4) Pressure Fumigators to a house 200 ft. long by 40 ft. wide.  
 Price, 1 lb. Pressure Fumigator..... 75c  
 Price, 5 lb Pressure Fumigator (5 1-lb. cans).....\$3.15  
 Price, 10 1-lb. cans..... 5.85  
 Transportation paid; see note top of page.

**NICO-FUME TOBACCO (POWDER).** For fumigating greenhouses.  
 Price, 1-lb. tin, \$1.00; 5-lb. tin, \$3.35; 10-lb. tin, \$5.85. Transportation paid; see note top of page.

**NICOTINE PYROX.** Pyrox plus nicotine. Kills aphid (plant lice) and many sucking insects; also destructive to caterpillars and other pests that chew the leaves. Prevents mildew and blight.  
 Price, 10 oz., 40c; 1 lb., 50c; 5 lbs., \$1.75; 10 lbs., \$3.00. Transportation paid; see note top of page.

**PARA-DICHLORO-BENZENE.** For peach tree borer. Generates a gas. Directions on container.  
 Price, ½ lb., 35c; 1 lb., 60c; 5 lbs., \$2.50; 10 lbs., \$4.00. Transportation paid; see note top of page.

**PARIS GREEN.** ¼ lb., 20c; 1 lb., 55c; 5 lbs., \$2.50; 14 lbs., \$5.00. Transportation paid; see note top of page.

**POMO GREEN WITH NICOTINE.** Used extensively as a prevention against black spot, mildew, etc., on roses and growing plants. The nicotine content kills aphid (plant lice) and other sucking and leaf-eating insects.  
 Price, 1 lb., 75c; 5 lbs., \$3.25. Transportation paid; see note top of page.

**PYROX.** An insecticide and fungicide for chewing insects, blights and fungus.  
 Price, 1 lb., 50c; 5 lbs., \$1.75; 10 lbs., \$3.25; 25 lbs., \$6.00; 50 lbs., \$7.25; 100 lbs., \$12.50. Transportation paid; see note top of page.

**RED ARROW GARDEN SPRAY.** A non-poisonous Flower and Vegetable Garden Spray scientifically blending Pyrethrum and Rotenone with Soap. Simply mix with water. Harmless to animals. Kills Red Spider, Mealy Bug, Rose Chafer, Mexican Bean Beetle. Aphid (plant lice) and other Chewing and Sucking insects.  
 Price, 1 oz., 35c; 4 oz., \$1.00; pint, \$2.00; quart, \$3.70; gallon, \$12.00. Transportation paid; see note top of page.

**ROTESENE** see DERIDUST.

**SEMESAN.** As a remedy for the malignant grass disease called "Brown Patch."  
 Price, 2 ozs., 50c; 1 lb., \$2.50; 5 lbs., \$11.75; 25 lbs., \$46.25; 100 lbs., \$180.00. Transportation paid; see note top of page.

**SEMESAN BEL.** Applied to whole or cut seed potatoes, Semesan Bel will prevent or control the common seed-borne potato disease.  
 Price, 4 ozs., 50c; 1 lb., \$1.75; 5 lbs., \$8.00; 25 lbs., \$31.25; 100 lbs., \$120.00. Transportation paid; see note top of page.

**SEMESAN JR.** For both field and sweet corn seeds to control ear, root and stalk rots.  
 Price, 4 ozs., 50c; 1 lb., \$1.50; 5 lbs., \$7.00; 25 lbs., \$28.75; 100 lbs., \$110.00. Transportation paid; see note top of page.

**SLUG SHOT.** A non-poisonous powder insecticide. Not injurious to the person applying it, or to fruits and vegetables. Destroys potato bugs, beetles, green flies, slugs, worms, etc.  
 Price, 1-lb. canister, perforated top, 25c; 5-lb. canister, \$1.00; 25-lb. fibre bag, \$4.00; bulk, 125-lb. keg, with duster, \$18.00; bulk, 250-lb. bbl., with duster, \$34.00. Transportation paid; see note top of page.

**SNAROL.** For the control of cutworms, snails, etc., non-injurious to vegetation and very economical to use on account of its insolubility in water.  
 Price, per 1½-lb. pkg., 35c; 4-lb. pkg., 85c; 15 lbs., \$3.00; 50 lbs., \$8.00. Transportation paid; see note top of page.

**SULPHUR DUSTING.** Used for checking mildew, blight, etc.  
 Price, 1 lb., 15c; 5 lbs., 50c; 10 lbs., 90c; 25 lbs., \$2.75; 50 lbs., \$4.50; 100 lbs., \$8.00.  
 Transportation paid; see note top of page.

**SULFOCID.** A powerful summer fungicide for fruits, vegetables and flowers. Very superior for the control of apple scab, brown rot of peaches and other serious diseases. 1 gallon makes 200 gallons of spray.  
 Price, qt., 85c; gal., \$2.25; 5 gals., \$7.50. Transportation paid; see note top of page.

**TERMITES.** This wood destroyer cannot be satisfactorily controlled by the home owner; it requires the service of a specialist. We offer the service of the best known termite specialist in the United States.

**TOBACCO DUST, FINE.** For green and black aphid, flea-beetles, etc. Splendid fertilizer and preventive for insects in the ground and around roots.  
 Price, 1 lb., 20c; 5 lbs., 70c; 10 lbs., \$1.10; 25-lb. bag, \$1.50; 50-lb. bag, \$2.50; 100-lb. bag, \$4.50. Transportation paid; see note top of page.

**TOBACCO STEMS.** Used for fumigating and as a fertilizer.  
 Price, bale, about 100 lbs., \$4.00. Transportation paid; see note top of page.

**TREE TANGLEFOOT.** No crawling insect can pass a band of tree tanglefoot. 1 pound for 12-foot band, 4 inches wide, 1-16 inch thick.  
 Price, 1 lb., 60c; 5 lbs., \$2.75; 10 lbs., \$5.25; 25 lbs., \$11.00. Transportation paid; see note top of page.

**THRIP JUICE (HAMMOND'S).** Very effective against aphid, thrip, red spider, mealy bug, etc.  
 Price, pt., 65c; qt., \$1.25; gal., \$4.80. Transportation paid; see note top of page.

**TREE WOUND PAINT.** Is an insurance against decay, having penetrating, antiseptic and elastic waterproofing qualities.  
 Price, ½ pt., 30c; pt., 40c; qt., 75c; gal., \$2.00; 5 gals., \$8.00. Transportation paid; see note top of page.

**TRIOGEN.** For controlling black-spot, mildew and blight. Especially recommended for roses, asters, snapdragons, carnations, hollyhocks, delphiniums, phlox, chrysanthemums, golden glow, dahlias and many other plants subject to disease and insects.

- A. Small Kit (makes 16 quarts), \$1.50—Protects 12 to 20 roses for season.
- B. Medium Kit (makes 64 quarts), \$4.00—Protects 50 to 80 roses for season.
- C. Large Kit (makes 32 gallons), \$6.00—Protects 100 to 160 roses for season.
- D. Estate Kit (makes 128 gallons), \$20.00—Protects 400 to 600 roses for season.

Transportation paid; see note top of page.

**VERMINE.** Kills underground insects. Use 1 part Vermine to 400 parts water, thoroughly saturating the ground.  
 Price, ½ pt., 40c; pt., 65c; qt., \$1.00; gal., \$3.00. Transportation paid; see note top of page.

**VOLCK (Garden).** A Volck-Nicotine combination spray for the garden. Controls red spider, mites, white flies, scales, mealy bugs, caterpillars, aphid, thrip, etc.  
 Price, 3½ oz., 35c; pt., \$1.00; qt., \$1.50; gal., \$4.00.  
 Transportation paid; see note top of page.

**VOLCK INSECTICIDE.** (Nursery.) It successfully controls scale, mealy bug, white fly, red spider and mites, aphid, caterpillars and many other insect pests. Prevents rose mildew.  
 Price, ½-pt. cans, 35c; pt. cans, 50c; qt., 75c; gal., \$2.00; 5 gals., \$6.00. Transportation paid; see note top of page.

**WILSON'S O. K. PLANT SPRAY.** For roses, chrysanthemums, evergreens, and all plants affected with scale or insects, under glass or outside.  
 Price, ½ pt., 40c; qt., \$1.00; gal., \$3.00; 5 gals., \$12.00; ½ bbl., \$50.00; bbl., \$90.00. Transportation paid; see note top of page.

**X-L-ALL LIQUID INSECTICIDE.** Destroys mealy bug, scale, thrip, red spider, green and black fly, caterpillars, blight and all insect pests in the garden; it is perfectly safe to use on tender plants.  
 Price, qt., \$3.50; gal., \$9.00.  
 Transportation paid; see note top of page.

**ZELIO PASTE (Bayer's).** Sure death to rats, mice, ground squirrels and prairie dogs. Drives rats and mice into the open to die.  
 Price, 2-oz. tube, 50c; 8-oz. can, \$1.50. Transportation paid; see note top of page.

**ZELIO POISON WHEAT (Bayer's).** The most efficient poison for destroying field mice and small rodents.  
 Price, 1 oz., 35c. Transportation paid; see note top of page.

## BONE MEAL—Henderson's Medium Fine

A Lasting Fertilizer—Excellent for Bulbs

As there is absolutely no danger of burning or causing rot in fleshy bulbs including Tulips, Hyacinths, etc., a liberal application of Bone Meal mixed into the soil before planting them will be amply repaid for by the remarkable size and brilliancy of the flowers obtained.  
 For Lawns it is a dependable fertilizer, as it contains the essential elements that grass requires. It may be broadcast as a top-dressing at any time either in early spring or during the growing season.

**Quantity Required.** For lawns, pasture and mowing lands 10 lbs. to 200 square feet or ½ to 1 ton per acre. For trees and vines, 2 to 4 lbs. each. For field and garden crops, ¼ to 1 ton broadcast and harrowed in. For rose beds, pot plants, etc., one part to about fifty of soil.

Prices:	50 lbs.....	\$ 2.75
5 lbs.....	100 lbs.....	4.50
10 lbs.....	500 lbs.....	18.00
25 lbs.....	175	

For larger quantities prices on application. Prepaid 1st and 2nd zones—150 miles New York City.

## HENDERSON'S FLUID WEED DESTROYER

Kills Poison Ivy.

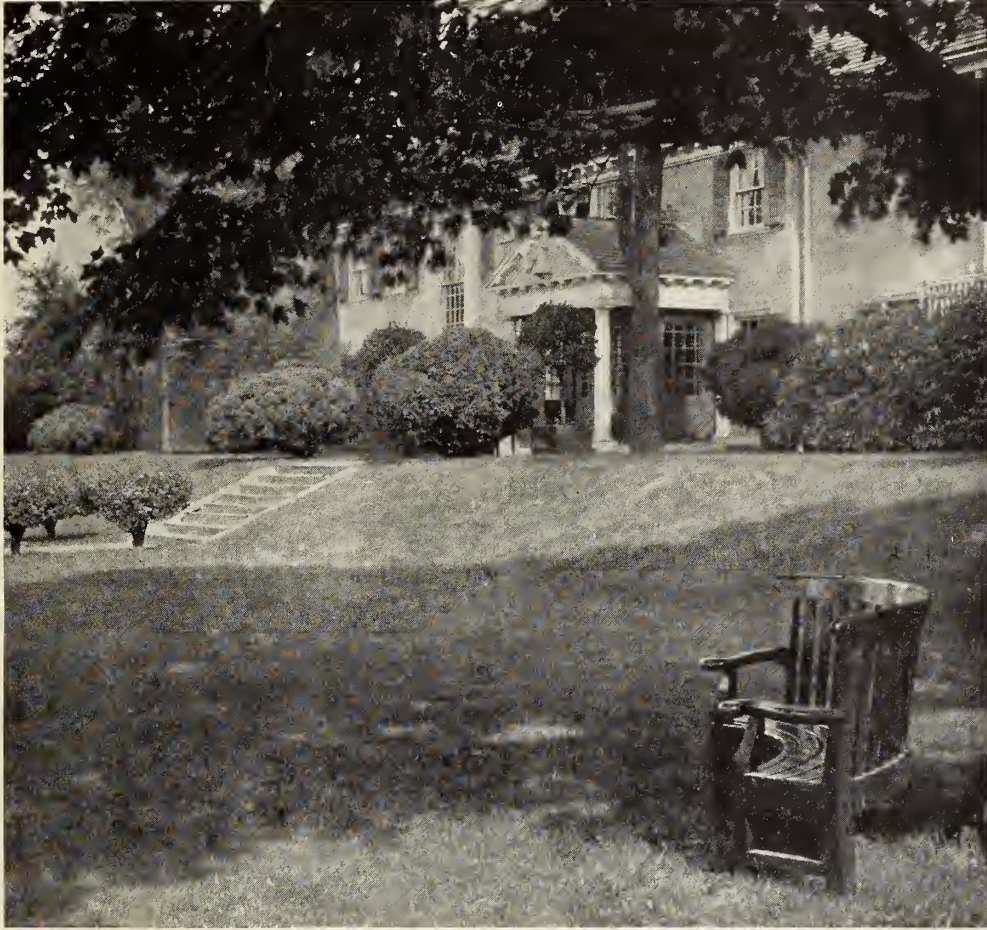
Kills all vegetation it comes in contact with and prevents growth for a period of one year.  
 A sure killer of weeds, grass, etc., on tennis courts, paths and driveways. 5 gallons is a sufficient quantity for tennis courts. Easily applied with sprinkling pot or cart. Dilute with water according to directions and apply.

To kill poison ivy, make a solution of one part of Henderson's Fluid Weed Destroyer to fifteen parts of water. Take a crowbar or sharp, pointed stick and make a hole in the soil near the root of the ivy and pour a pint of the solution in the hole.

A quart can makes 7 to 10 gals., sufficient for 200 sq. ft.....	\$0.60
A gal. can makes 30 to 40 gals., sufficient for 800 sq. ft.....	1.75
5-gal. keg makes 150 to 200 gals., sufficient for 4,000 sq. ft.....	6.50
55-gal. bbl. makes 1,650 to 2,200 gals., sufficient for 44,000 sq. ft.....	42.50

Prepaid 1st and 2nd zones, 150 miles New York City. See Note at top of page

# THE MOST BEAUTIFUL LAWNS IN AMERICA



## ARE MADE WITH THE HENDERSON LAWN GRASS SEED

The "Henderson" lawn grass seed mixture has been thoroughly tested by country-wide use for more than half a century. It is the fruit of years of experience and close study of American conditions and is undoubtedly the best for the American climate. By its use a deep green, velvety sward, free from clumps, can be produced in from 4 to 6 weeks' time. The "Henderson" LAWN GRASS SEED is a carefully arranged combination of fine-leaved, dwarf Grasses which are at their best during different months of the year, thus keeping a lawn constantly covered with enduring green.

### Price of "Henderson" Lawn Grass Seed (Delivered Transportation Paid) in the U. S. A.

½ lb., 35c; 1 lb., 60c; 3 lbs., \$1.75; 5 lbs., \$2.75; 10 lbs., \$5.00; 20 lbs., \$9.00; 100 lbs., \$42.50.

#### AMOUNT OF SEED REQUIRED FOR LAWNS

Size of Plot	Square Feet	Quantity
10 x 20	200	1 lb.
20 x 50	1,000	5 lbs.
20 x 100	2,000	10 lbs.
40 x 100	4,000	20 lbs.
200 x 200	40,000	100 to 150 lbs.

For renovating use half of above quantities.

### Lawn Grass Seed Mixtures for Special Purposes

**"TERRACE SOD"** Lawn Grass Seed for terrace and embankments. Price, ½ lb., 40c; 1 lb., 70c; 3 lbs., \$2.00, 5 lbs., \$3.25, 10 lbs., \$6.25, 20 lbs., \$12.00, 100 lbs., \$58.00.

**"SHADY NOOK"** Lawn Grass Seed for shady places. Price, ½ lb., 40c; 1 lb., 70c; 3 lbs., \$2.00, 5 lbs., \$3.25, 10 lbs., \$6.25, 20 lbs., \$12.00, 100 lbs., \$58.00.

**"SUNNY SOUTH"** Lawn Grass Seed for Southern States. Price, ½ lb., 40c; 1 lb., 70c; 3 lbs., \$2.00, 5 lbs., \$3.25, 10 lbs., \$6.25, 20 lbs., \$12.00, 100 lbs., \$58.00.

**"SEA SIDE"** Lawn Grass Seed for sandy soil and saline surroundings. Price, ½ lb., 35c; 1 lb., 60c; 3 lbs., \$1.75, 5 lbs., \$2.75, 10 lbs., \$5.00, 20 lbs., \$9.00, 100 lbs., \$42.50.

**"TOUGH TURF"** Grass Mixture for tennis courts, croquet grounds and bowling greens. Price, ½ lb., 35c; 1 lb., 60c; 3 lbs., \$1.75, 5 lbs., \$2.75, 10 lbs., \$5.00, 20 lbs., \$9.00, 100 lbs., \$42.50.

**"SPECIAL BENT FORMULA"**—Lawns made with this mixture will rival the finest golf course putting greens. Sow one pound to 200 square feet. Price: \$1.25 per lb., 5 lbs., \$5.75; 25 lbs., \$25.00, 100 lbs. lots and upward, \$90.00 per 100 lbs.

#### SPECIAL STANDARD FORMULAS

Recommended by The New Jersey State Experiment Station.

The department of Agronomy at the N. J. State College Farms at New Brunswick, N. J., has made an extensive study of grasses suitable for lawns in New Jersey and the following recommendations are the result.

	1 lb.	5 lbs.	10 lbs.	25 lbs.	100 lbs.
<b>Formula No. 1</b> with White Clover	\$0.70	\$3.25	\$6.25	\$15.00	\$58.00
<b>Formula No. 1-A</b> without White Clover	.70	3.25	6.25	15.00	58.00
<b>Formula No. 2</b> for Finest Quality Turf	1.25	5.75	11.00	25.00	90.00
<b>Formula No. 3</b> for Shaded Areas	.80	3.75	7.25	18.00	70.00
<b>Formula No. 4</b> for Poor or Sandy Soil	.70	3.25	6.25	15.00	58.00

All of the above are delivered transportation paid in the U. S.





**Special Prices**  
 Advance Offering of  
**FLOWERING BULBS**  
 For Delivery Next Fall

**PETER HENDERSON & CO.**  
 35 Corlandt St., New York

**HENDERSON'S "SUNLITE" COLLECTION OF**

Number on Plate	Per Doz.	Per 100
1 Whistler (Trumpet).....	\$2.50	\$18.00
2 Red Beacon (Barri).....	1.00	7.50
3 Southern Gem (Leedsii)....	1.00	7.50
4 Spring Glory (Trumpet)....	1.25	9.00
5 Bernardino (Incomparabilis)	1.00	7.50

**SUPERIOR NARCISUS AND DAFFODILS**

PRICES OF COLLECTIONS

A.	15 Bulbs, 3 each 5 varieties.....	\$1.75
B.	30 Bulbs, 6 each 5 varieties.....	3.25
C.	60 Bulbs, 12 each 5 varieties.....	6.00

(Transportation Paid)

(See descriptions pages 9 and 10)