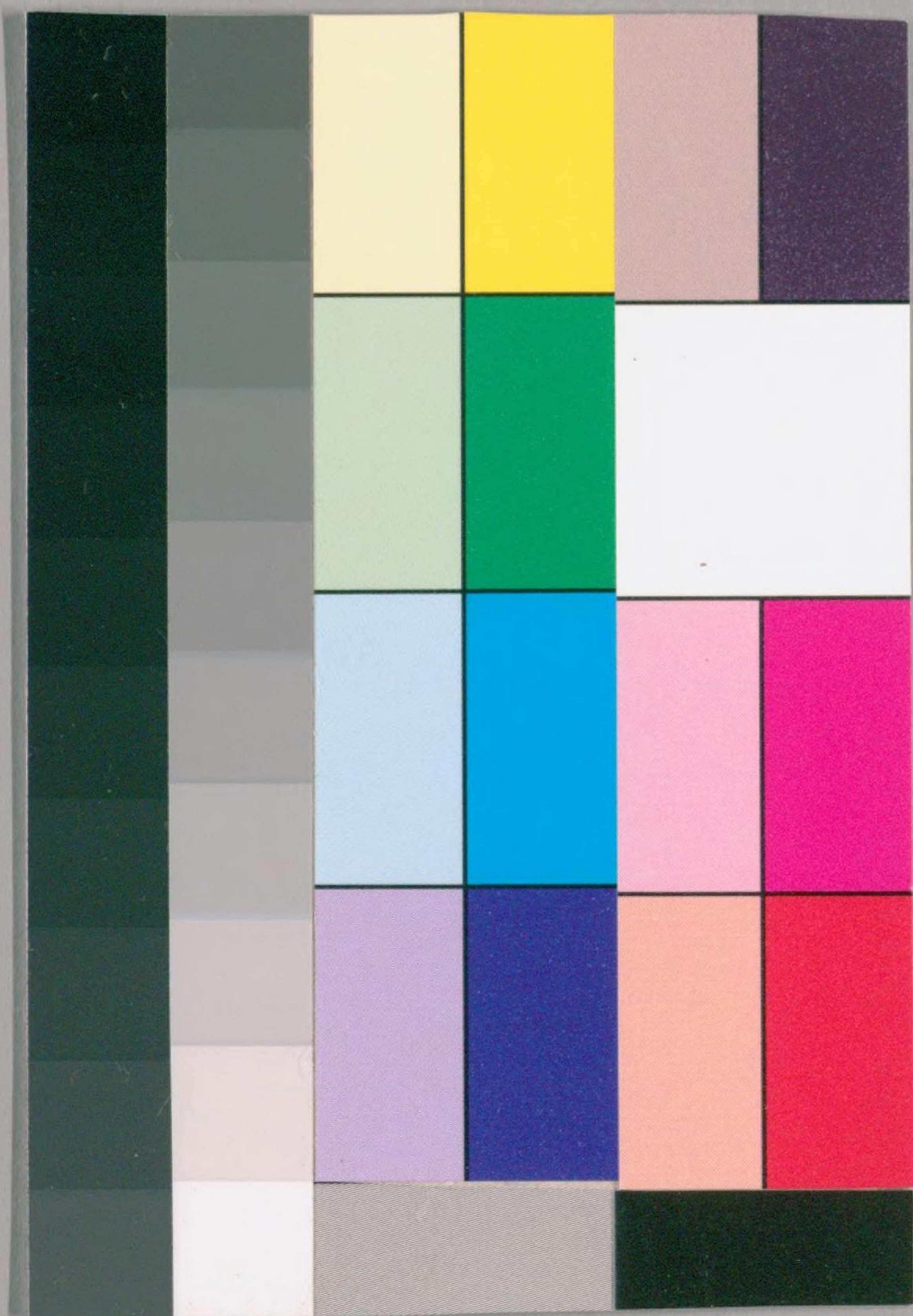




わ  
49

源氏のゆらひ



国立国会図書館 タイトル『源氏のゆらひ』 請求記号 わ-49

ガラス使用









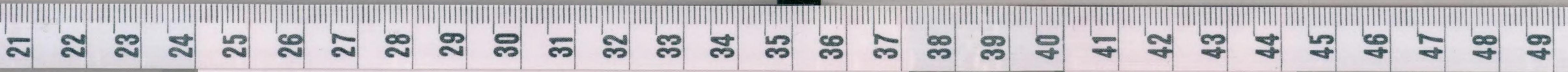


Handwritten text in Kuzushiji style, consisting of approximately 15 lines of cursive script.

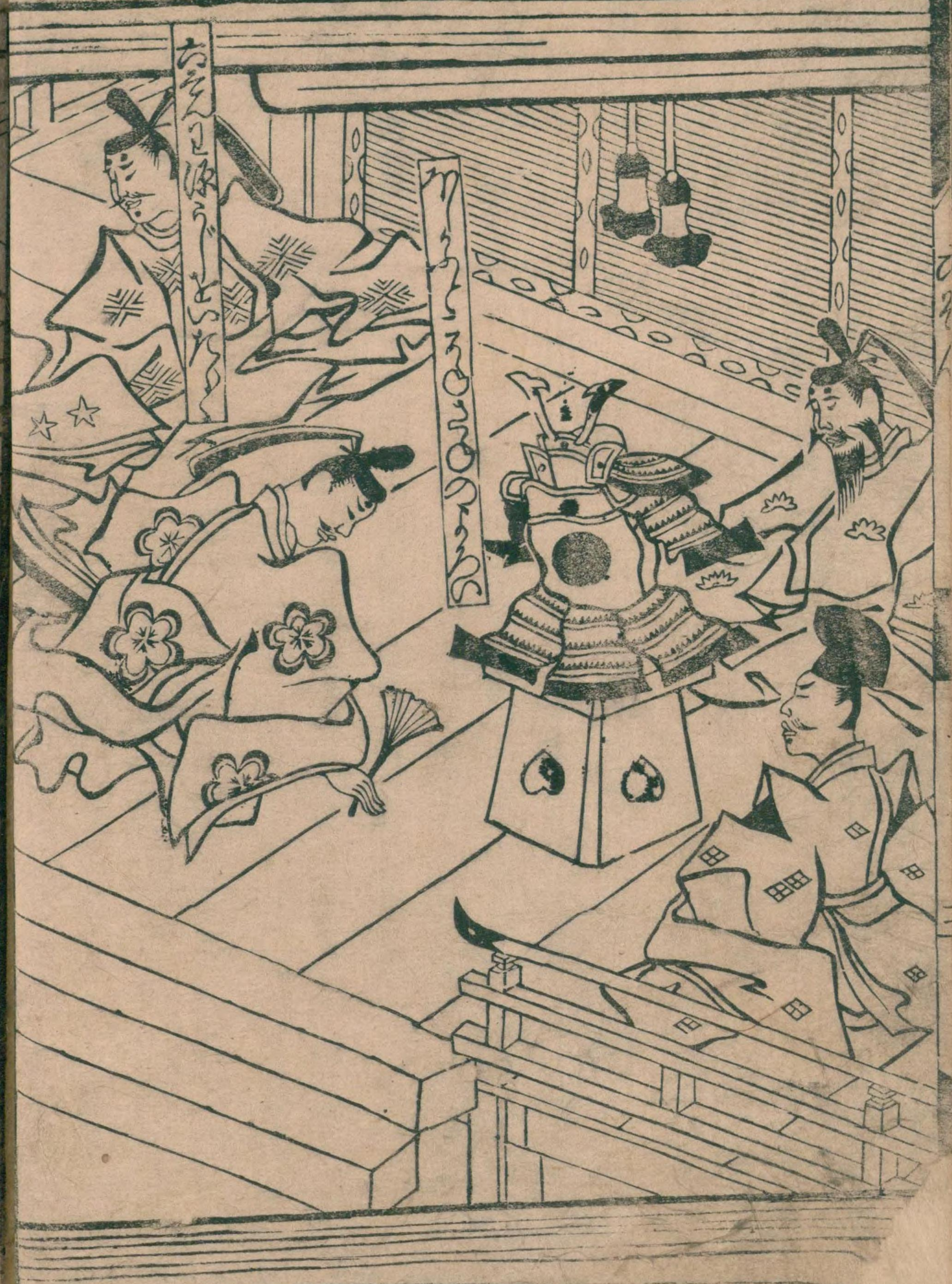
源氏

Handwritten text in Kuzushiji style, continuing from the previous page, consisting of approximately 15 lines of cursive script.

Handwritten text in Kuzushiji style, consisting of approximately 15 lines of cursive script.









Handwritten text in Kuzushiji style, covering approximately 20 lines on the left page of the manuscript.

Handwritten text in Kuzushiji style, covering approximately 20 lines on the right page of the manuscript.





Handwritten text in a cursive style, likely a chapter heading or introductory text. The characters are dense and difficult to decipher without specialized knowledge of the script.

四三三

Main body of handwritten text in a cursive style, continuing the narrative or list from the previous page.







西中鬼の六打落

あつた

今中鬼とくむ



あつた

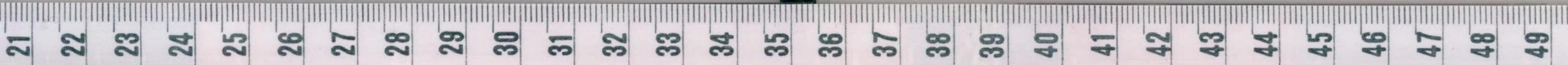




Handwritten text in a cursive script, likely a form of Japanese calligraphy (sōsho). The text is densely packed and covers most of the page.

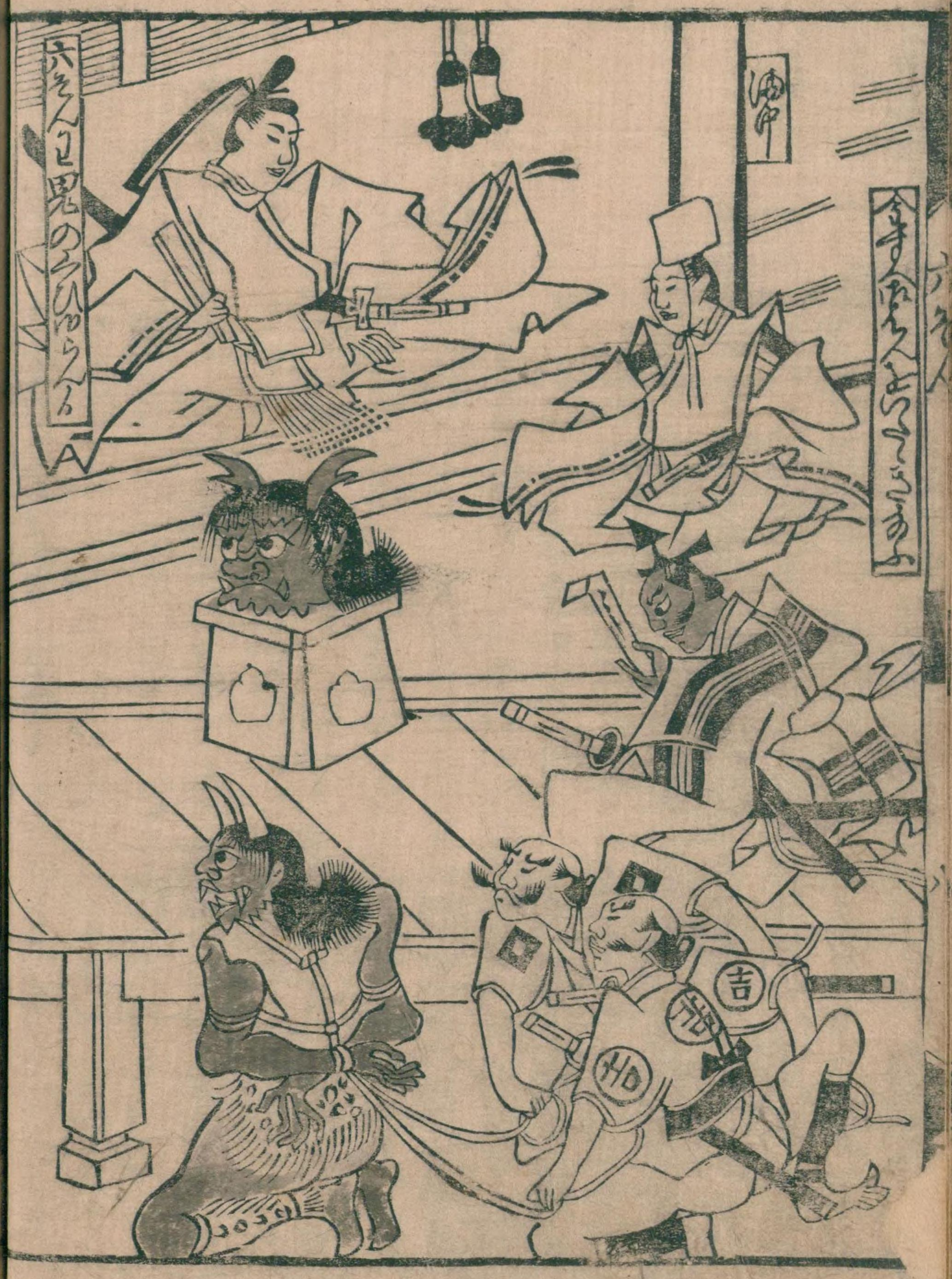
源氏物語

Handwritten text in a cursive script, continuing from the previous page. The text is densely packed and covers most of the page.

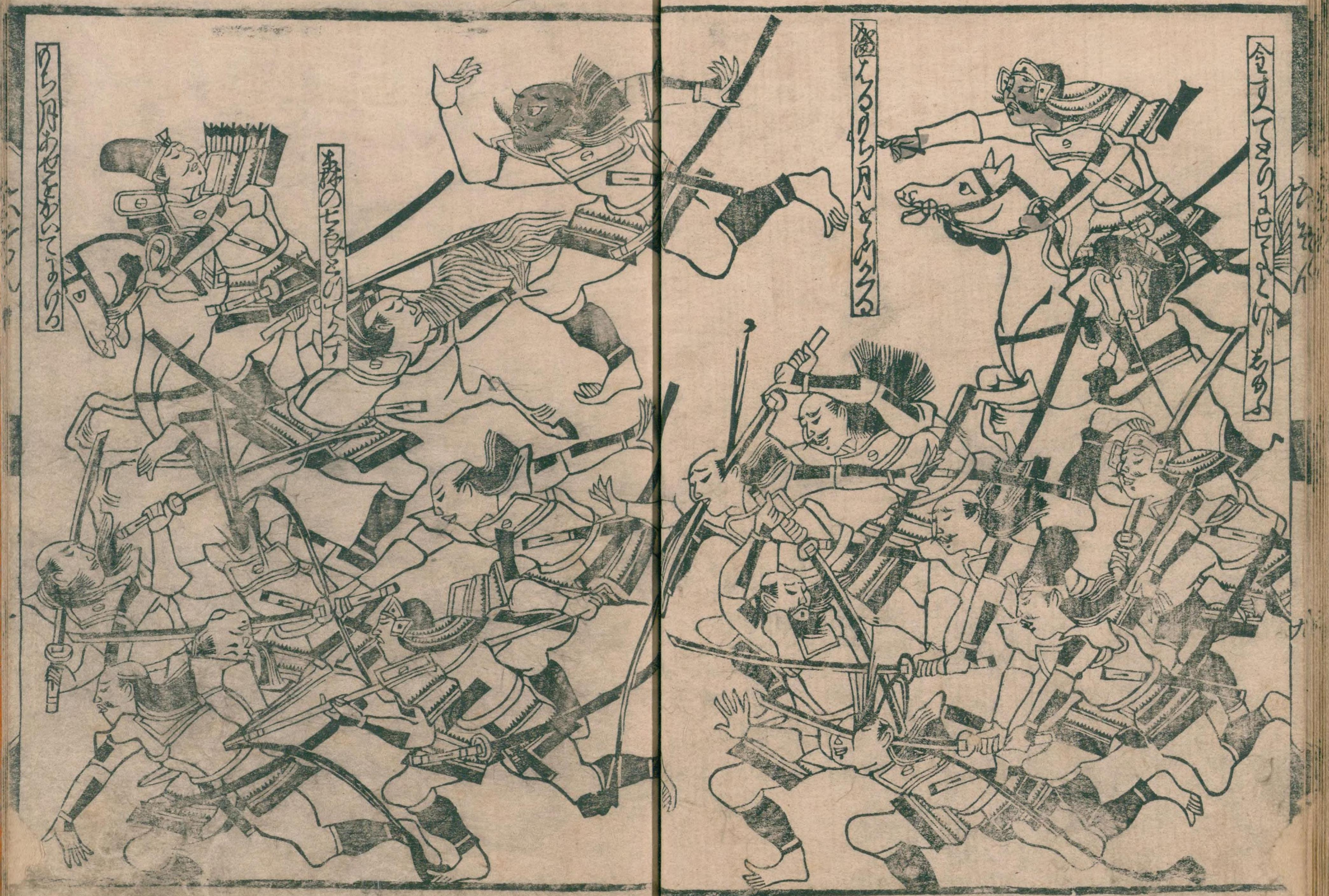




Handwritten text in a cursive style, likely a transcription of a story or poem. The text is arranged in approximately 20 horizontal lines across the page.





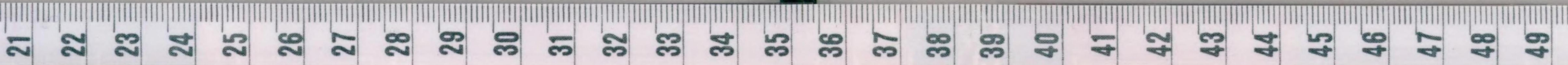


源氏物語

源氏物語

源氏物語

源氏物語







木下  
大内入内  
The right page of the book contains a column of handwritten text in a cursive Japanese style (sōsho). The text is written vertically and appears to be a commentary or a transcription related to the illustration on the left. The characters are densely packed and difficult to read without specialized knowledge of the cursive script.





Handwritten text in a cursive script, likely a form of Japanese calligraphy (sōsho). The text is densely packed and covers the entire page.

Handwritten text in a cursive script, likely a form of Japanese calligraphy (sōsho). The text is densely packed and covers the entire page.

四  
九

Handwritten text in a cursive script, likely a form of Japanese calligraphy (sōsho). The text is densely packed and covers the entire page.



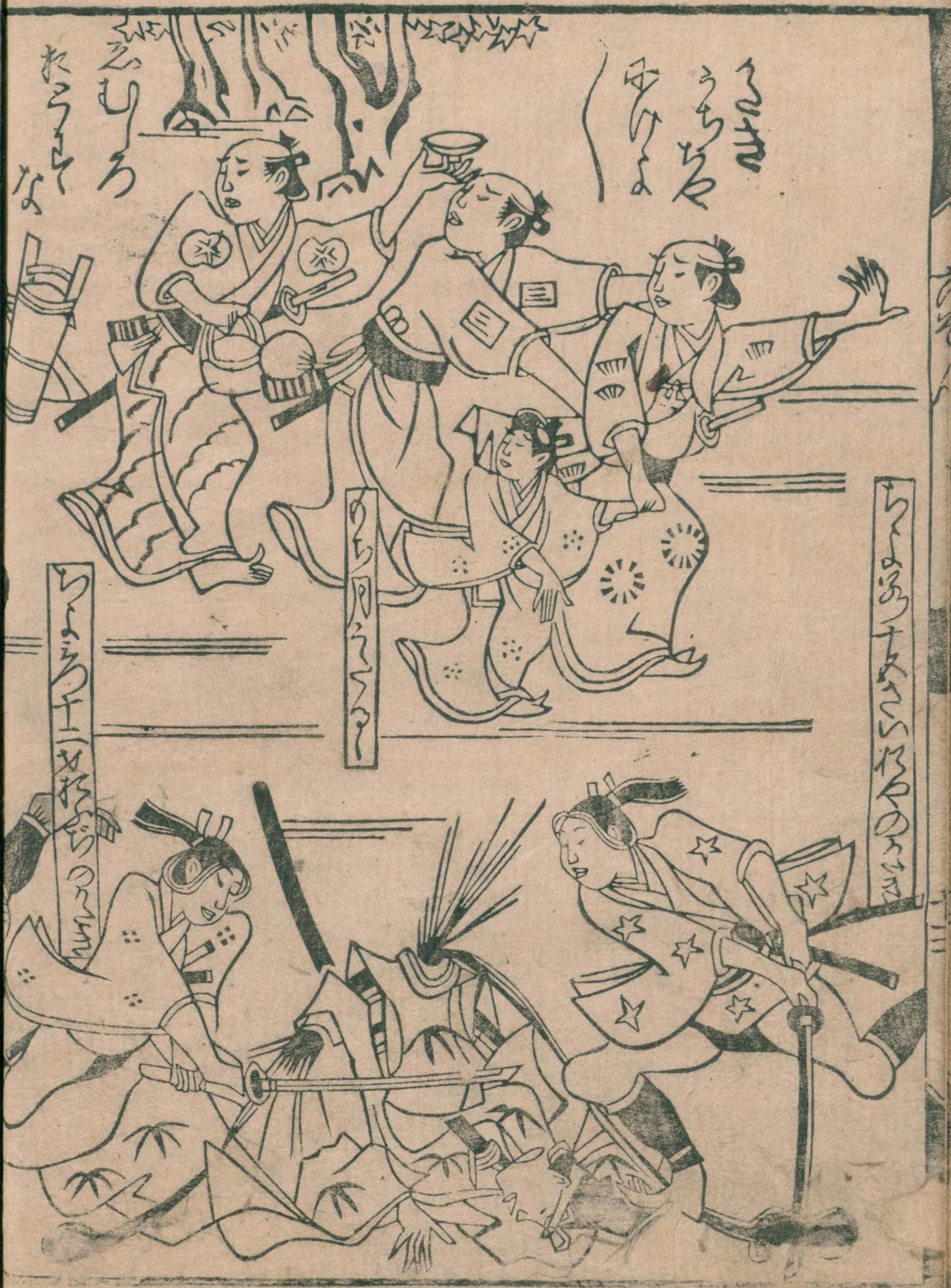
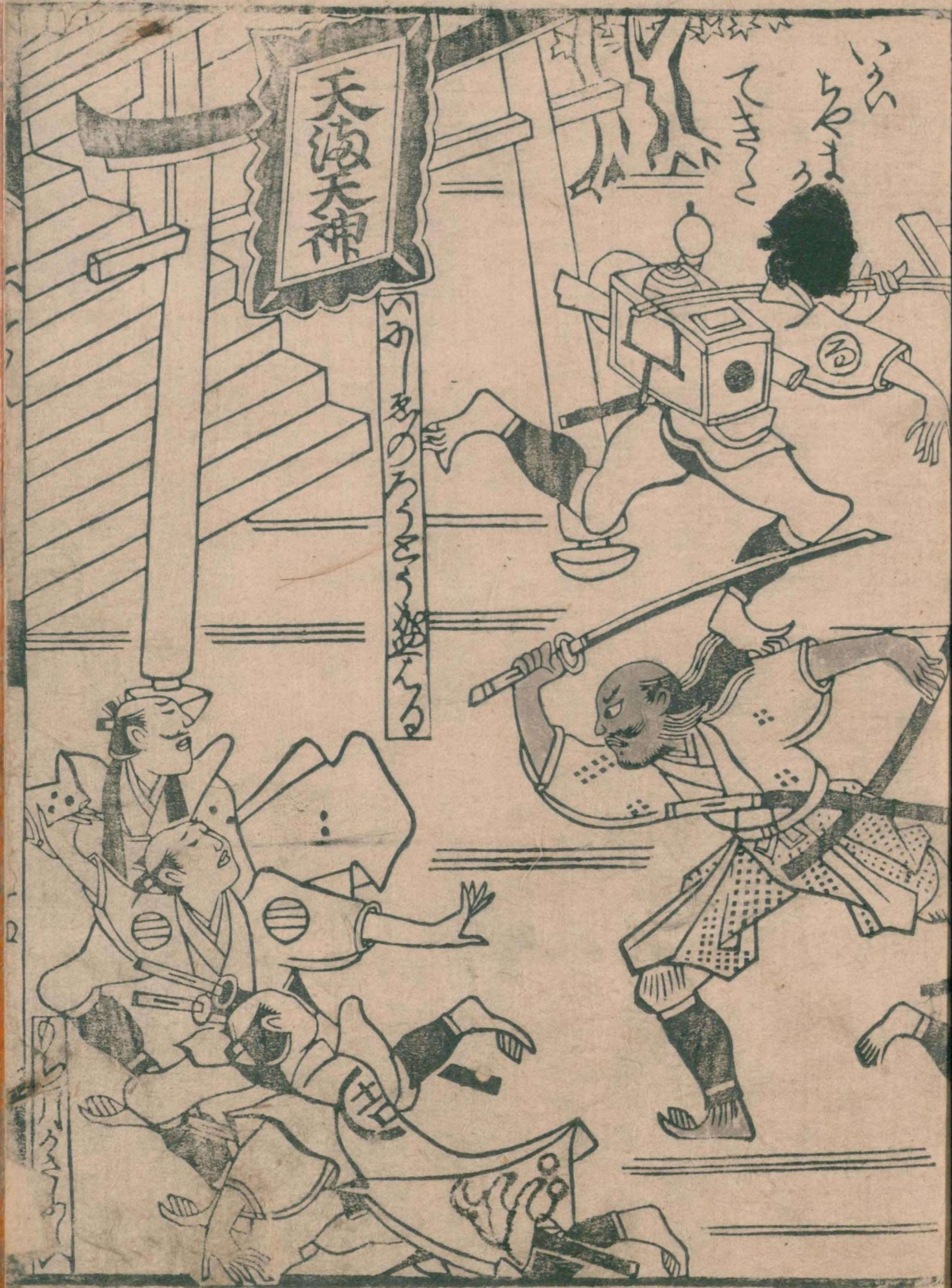
Handwritten text in a cursive style, likely a transcription of a classical Japanese text. The text is arranged in vertical columns, reading from right to left. It appears to be a chapter or section of a narrative, possibly related to the title 'Genji no Yurabi' (The Swaying of Genji).

源氏

Continuation of the handwritten text, following the section header. The script is consistent with the first page, maintaining the vertical columnar format.









源氏物語 白河宮日記

Handwritten text in Kuzushiji script, starting with '源氏物語' and '白河宮日記'.

Handwritten text in Kuzushiji script, continuing the narrative from the previous page.





わ 特別  
49

国立国会図書館

タイトル『源氏のゆらひ』 請求記号 わ-49

ガラス使用





国立国会図書館 タイトル『源氏のゆらひ』 請求記号 わ-49

ガラス使用