

Max C. Thompson

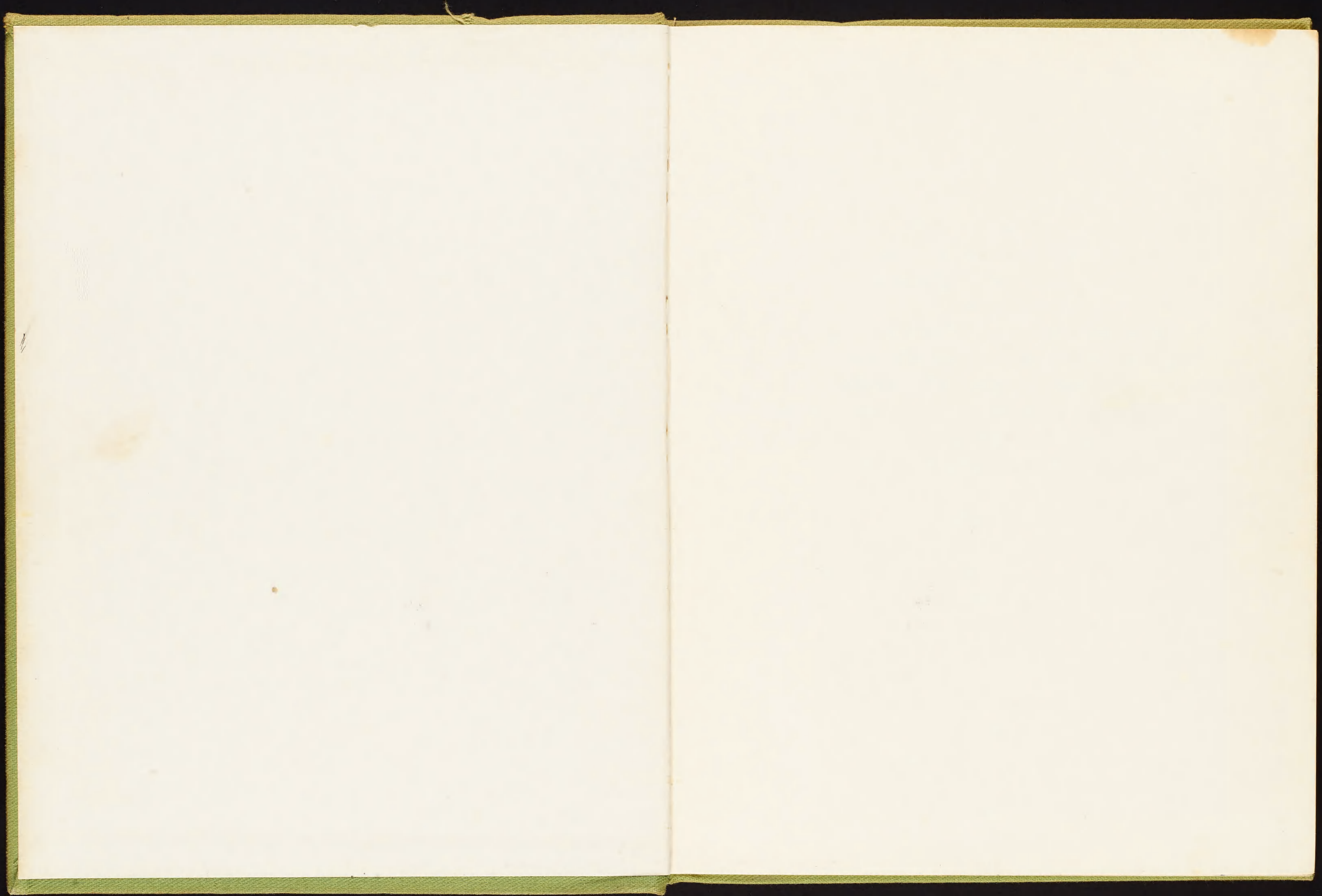
Collection

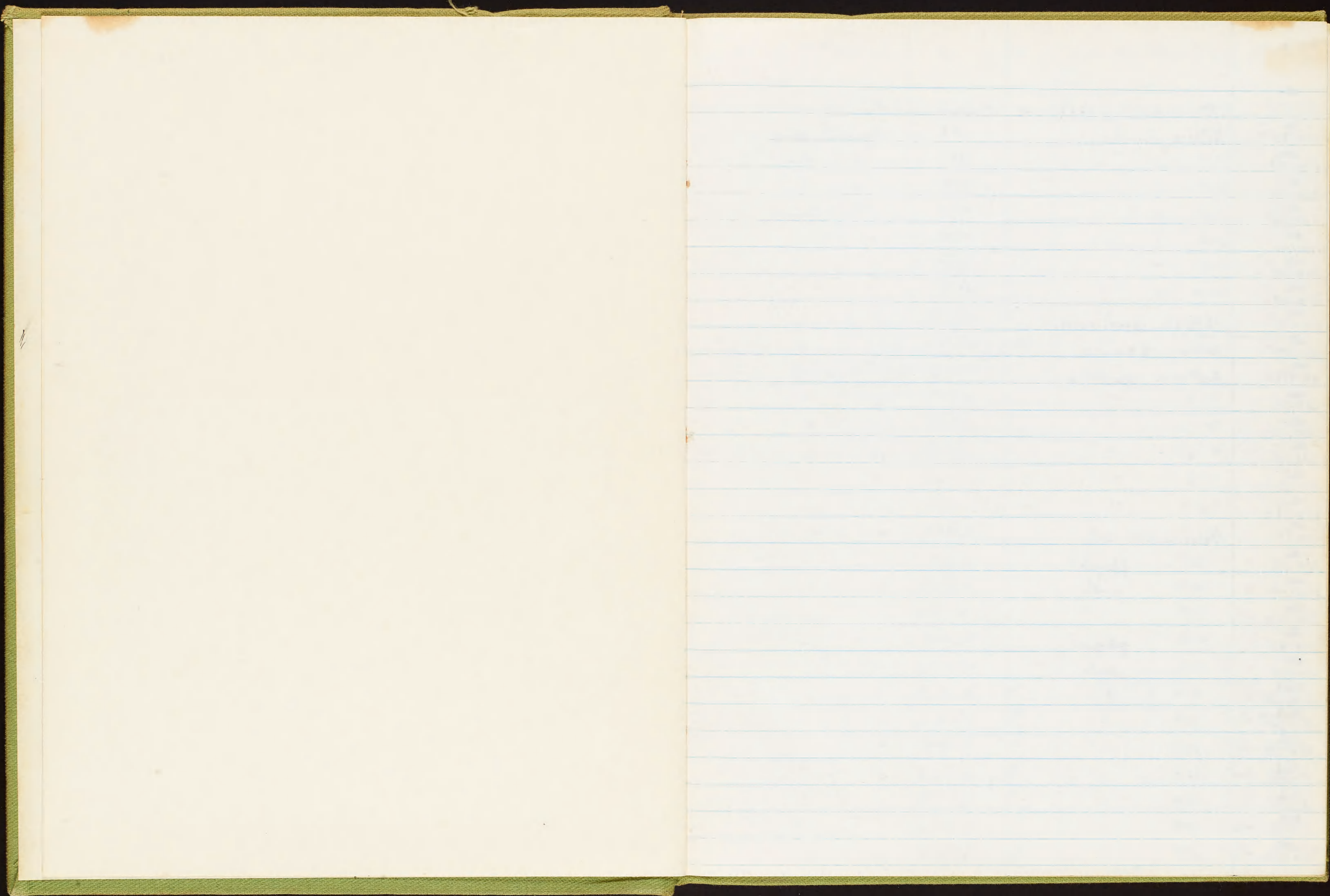
RECORD

ALASKA

1965

7530-222-3525
FEDERAL SUPPLY SERVICE
(GPO)





Field No	Species	Locality	Date	Wgt.	Sex	Collector & Catalogue Number
alc 110101 ✓	<i>Stercorarius parasiticus</i>	St. George Isl. 1/2 mile West of Village	20 June 1965	487		M. C. Thompson 4107
alc 110102 ✓	<i>Aethia pusilla</i>	" Zapadni Beach	"	84.2		" 4108 Blood
alc 110103 ✓	"	" " Bay	"	74.5		" 4109 "
alc 110104 ✓	"	" " "	"	83.0		" 4110 "
alc 110105 ✓	"	" " Beach	"	83.5		" 4111 "
alc 110106 ✓	"	" " "	"	70.7		" 4112 "
alc 110107 ✓	"	" " "	"	77.7		" 4113 "
alc 110108 ✓	"	" " "	"	85.8		" 4114 "
alc 110109 ✓	<i>Rissa brevirostris</i>	" " "	"	352.5		" 4115 "
alc 110110 ✓	<i>Uria lomvia</i>	" " "	"	1106.0	♀	" 10 ova over 10mm no specimen 4116 Blood
alc 110111 ✓	<i>Aethia pusilla</i>	" " "	21 June 1965	83.0		" 4118 Blood
alc 110112 ✓	"	" " "	"	83.0		" 4119 "
alc 110113 ✓	"	" " "	"	82.6		" 4120 "
alc 110114 ✓	"	" " "	"	77.6		" 4121 "
alc 110115 ✓	"	" " "	"	86.5		" 4122 "
alc 110116 ✓	"	" " "	"	80.0		" 4123 "
alc 110117 ✓	<i>Phalacrocorax urile</i>	" " "	23 "	2293.0		" 4124 "
alc 110118 ✓	" <i>pelagicus</i>	" " "	"	1745.5		" 4125 "
alc 110119 ✓	" <i>urile</i>	" " "	"	2464.5		" 4126 "
alc 110120 ✓	"	" " "	"	2511.5		" 4127 "
alc 110121 ✓	" <i>pelagicus</i>	" " "	"	1865.5		" 4128 "
alc 110122 ✓	" <i>urile</i>	" " "	"	2243.0		" 4129 T
skel 110123 ✓	"	" " "	"	2196.5	♂	" 4130 Testis 14x5mm.
skel 110124 ✓	"	" " "	"	2595.0	♂	" 4131 Testis 25x7mm
skel 110125 ✓	"	" " "	"	2264.5	♂	" 4132 Testis 28x10mm
skel 110126 ✓	"	" " "	"	2251.5	♂	" 4133 Testis 25x8mm
skel 110127 ✓	"	" " "	"	2537.0	♂	" 4134 Testis 20x9mm
skel 110128 ✓	"	" " "	"	2270.0	♂	" 4135 Testis 25x6mm
skel 110129 ✓	"	" " "	"	2124.5	♂	" 4136 Testis 24x7mm

SKELTON TESTIS
HYPOTHECATED
MUSEUM OF
05-17-66

CCF

Field No.	Species	Locality	Date	Wgt	Sex	collector & catalogue no
110130 ✓ skel.	Phalacrocorax urile	St. George Is. Zapadni Beach	23 June 1965	2125.0	♂	Max C. Thompson 4137 Testis 21 x 8 mm
110131 ✓ skel.	" "	" "	" " "	2236.0	♂	" 4138 ♂ Testis 20 x 6 mm
110132 ✓ skel.	Limnodromus griseus ^{scolopaceus}	" Pond above Zapadni cliff	24 " "	102.2	♀	RL DeLong 63 ♀ oviduct enlarged 2mm
110133 ✓ alc	Aethia cristatella	" " "	" " "	306.5	♀	RL DeLong 64 possible collapsed coll. ♀ Ova 2mm
110134 ✓ alc	" pusilla	Ulakaia	26 " "	76.4		Max C. Thompson 4139
110135 ✓ alc	" "	" "	" "	79.8		" 4140
110136 ✓ alc	" "	" "	" "	85.9		" 4141
110137 ✓ alc	" "	" "	" "	76.2		" 4142
110138 ✓ alc	" "	" "	" "	71.0		" 4143
110139 ✓ alc	" "	" "	" "	85.8		" 4144
110140 ✓ alc	" "	" "	" "	77.6		" 4145
110141 ✓ alc	" "	" "	" "	85.4		" 4146
110142 ✓ alc	" "	" "	" "	84.1		" 4147
110143 ✓ alc	" "	" "	" "	83.5		" 4148
110144 ✓ alc	" "	" "	" "	77.2		" 4149
110145 ✓ skel	" "	" "	" "	70.2	♂ Testis 12x5	" 4150
110146 ✓ skel	" "	" "	" "	85.9	♂ Testis 10x5 mm	" 4151
110147 ✓ skel	" "	" "	" "	75.4	♀ breeding	R. L. DeLong # 65
110148 ✓ skel	" "	" "	" "	77.6		" 66
110149 ✓ skel	" "	" "	" "	77.0	♀ collapsed foll.	" 67
110150 ✓ skel	" "	" "	" "	70.7	♂ Testis 9x5 mm	" 68
110151 ✓ skel	" "	" "	" "	79.3	♀ ovum 2mm	" 69
110152 ✓ skel	" "	" "	" "	80.0	♂ Testis 1x3 mm	" 70
110153 ✓ skel	" "	" "	" "	82.5	♂ Testis 5x3	" 71
110154 ✓ skel	" "	" "	" "	86.5	♂ Testis 9x4 mm	" 72
110155 ✓ skel	" "	" "	" "	81.3	♂ Testis 7x5 mm	" 73
110156 ✓ skel	" "	" "	" "	83.9		" 74
110157 ✓ skel	" "	" "	" "	72.5	♂ Testis 12x4 mm	" 75
110158 ✓ skel	" "	" "	" "	79.4	♂ Testis 7x3 mm	" 76

Field No	Species	Locality	Date	Wt. gms.	Sex	Collector & No	No
110188	Lemmus nigripes	North Rookery, St. George Is.	4 July 1965	64.5	♀	Max C. Thompson 4161	138-19-20-10
110189	"	"	"	68.7	?	" 4162	144-18-19-9
110190	"	Govorushka Lake	8 "	57.5	♀	Robert DeLong 95	126-15-18-7
110191	"	"	"	55.2	♀ 5embryos	Max C. Thompson 4163	128-18-20-10
110192	"	"	"	53.4	♂ Testis 11x7	Robert DeLong 96	No measurements
110193	Branta canadensis	Near Village	9 "	1932.2gms	♂ Testis small	Max C. Thompson 4164	Eating Equisetum
110194	Rissa tridactyla	Zapadni Bay	10 "	414.3gms	♀ 1 large ova to be ova intact	Robert DeLong 97	
110195	"	"	"	446.8	♂ Testis 13x7 molting	" 98	
110196	"	"	"	434.6	♂ Testis 14x6 largest ova 4mm	" 99	Ticks
110197	" brevisrostris	"	"	316.8	♀ collapsed foll.	Max C. Thompson 4165	Ticks
110198	"	"	"	415.2	♂ Testis 14x8 molting	" 4166	
110199	"	"	"	368.3	♀ largest ovum 3mm largest ova 4mm	" 4167	Ticks & Mollusca
110200	"	"	"	401.9	♀ collapsed foll. ova to 1mm.	" 4168	
110201	Arenaria interpres	East Killing Field Beach	14 "	113.0	♀ ovary small 4x1mm	" 4169	Body molt moderate fat mollusca
110202	"	Zapadni Bay	13 "	92.8	♂ Testis minute largest ovum 1mm	Robert DeLong 100	moderate fat bright body molt
110203	"	"	15 "	116.9	♀ ovary small largest ovum 1mm	Max C. Thompson 4170	moderate fat moderate fat
110204	"	Ulakaia	16 "	100.2	♀ ovary small largest ovum 1mm	Robert DeLong 101	heavy body molt heavy fat
110205	"	"	"	116.7	♀ ovary small	Max C. Thompson 4171	heavy body molt
110206	Leucosticte tephrocotis	Nest	18 "	-	-	Berlese Sample	
110207	Lemmus nigripes	Seal Lake	22 "	37.0	♀	R. L. DeLong 102	No measurements
110208	"	"	"	46.3	♂ Testis 8x6	" 103	116-8-17-9
110209	"	"	"	58.1	♂	" 104	121-9-17-10
110210	"	"	"	28.8	♀	" 105	93-9-17-8
110211	"	"	"	48.6	♀	" 106	113-12-18-9
110212	"	"	"	27.0	♀	" 107	98-11-16-8
110213	"	"	"	26.1	♂ Testis 6x4	"	
110214	"	"	"	90.9	♀ 6 embryos 32mm long	"	
110215	"	"	"	53.1	♀	"	
110216	"	"	"	44.3	♀	"	

Field No.	Species	Locality	Date	Wgt.	Sex	Collector & Number
skull 110217	<i>Lemmus nigripes</i>	Seal Lake ST George Island	22 July 1965	50.8	♀ Embryos	
skull 110218	"	"	"	49.3	♂ Testis 10x7	
skin & skull 110219	"	"	"	51.5	♂ Testis 9x7	R. L. DeLong ¹⁰⁸ 125-16-17-9
skin & skull 110220	"	"	"	58.1	♂ Testis 11x8	" 109 129-18-18-8
skull 110221	"	"	"	41.4	♀	" 110 119-19-17-7
skull 110222	"	"	"	55.5	♀	" 111 127-15-17-9
skull 110223	"	"	"	34.1	♀	" 112 117-18-17-8
alc 110224 ✓	<i>Uria lomvia</i>	"	30 July	-	young	M. C. Thompson 4172
skull 110225	<i>Alopex lagopus</i>	Staraya Artil	31 July	=	♂	R. L. DeLong 113 934-340-140-63
110226 ✓	<i>Arenaria interpres</i>	Zapadni	30 "	-	♀ ova to 1mm	Max C. Thompson 4173 Brood Patches Heavy fat
110227 ✓	"	East	1 Aug	93.2	♂ Testis minute	" 4174 light fat
disc 110228 ✓	"	"	"	-	♀ ova to 1mm	" 4175 Stomach saved
110229 ✓	<i>Leucosticte tephrocotis</i>	"	"	-	♂ Testis 10x8	R. L. DeLong 114
110230 ✓	<i>Erolia bairdii</i>	Zapadni	5 Aug	-	♂ Testis small	R. L. DeLong 115
110231 ✓	<i>Arenaria interpres</i> stomach	East	3 Aug	-	♂ Testis small	Max C. Thompson 4176
110232 ✓	<i>Acanthis flammea</i>	"	2 August	-	♀ ova to 1mm	R. L. DeLong 116
110233 ✓	<i>Arenaria interpres</i>	"	6 August	119.6	♀ ova small	R. L. DeLong 117 old Brood Patch moderate fat
110234 ✓	"	"	"	129.1	♂ Testis 6x2	R. L. DeLong 118 " Heavy fat
110235 ✓	<i>Totanus flavipes</i>	"	8 "	87.8	♂ immature	" 119 Moderate fat
110236 ✓	Stelgidopteryx <i>Riparia riparia</i>	Staraya Artil	"	12.4	♂ immature	Max C. Thompson 4177 light fat stomach contents
110237 ✓	<i>Anthus spinoletta</i>	St. George Village	10 "	-	♂ juv.	" 4178 light fat,
110238 ✓	<i>Arenaria interpres</i>	East Killing Field	15 "	164.1	♀ Ad.	" 4179 Extra Heavy fat.
110239 ✓	"	"	16 "	-	♂ Ad.	" 4180 Heavy fat
110240 ✓	<i>Tringa glareola</i>	"	18 "	-	♂	R. L. DeLong 120 light fat
alc 110241 ✓	<i>Erolia acuminata</i>	"	22 "	59.1		Max C. Thompson 4181
110242 ✓	<i>Arenaria interpres</i> stomach	"	23 "		♂ Ad	
110243 ✓	"	"	27 "		?	Killed in shot
110244 ✓	"	"	"		♂ Ad	"
110245 ✓	"	"	"		♂ Ad.	"

110246 ✓	<i>Arenaria interpres</i> stomach	East, St. George Is.	27 Aug	-	♂	Killed in cannon shot
110247 ✓	"	"	"	-	♂	"
110248 ✓	"	"	"	-	♂	"
110249 ✓	"	"	28 "	-	A -	"
110250 ✓	"	"	"	-	A -	"
110251 ✓	"	"	"	-	A -	"
110252 ✓	"	"	"	-	A -	"
110253 ✓	"	"	"	-	A -	"
110254 ✓	"	"	"	-	A ?	"
110255 ✓	"	"	"	-	A ?	"
110256 ✓	<i>Branta nigricans</i>	Zapadni K. of St. George - St. Geo.	"	-	♀ ova small - 62mm.	R. DeLong 121
110257 ✓	<i>Anas acuta</i>	Lake below Ulaica	31 "	-	♂ imm.	Max C. Thompson 4183 Moderate fat
110258 ✓	" <i>platyrhynchos</i>	Isaac Lake	"	-	♂	Robert DeLong 125
110259 ✓	<i>Erolia</i> sp. <i>temminckii</i>	Staraya Artil, St. George	24 Aug	-	♀	Max C. Thompson 4182
110260 ✓	Anas <i>Arenaria interpres</i> stomach	East "	31 Aug	-	-	♂ Gonads Killed in cannon shot
110261 ✓	Anas "	" "	"	-	-	
110262 ✓	Cercastes <i>Erolia</i> <i>refucollis</i>	Zapadni, "	2 Sept	-	♀ imm.	Max C. Thompson 4184 Heavy fat
110263 ✓	Mull. <i>planga</i> (from Turnstone)	Dump "	4 Sept	-	-	Parasites only
110264 ✓	<i>Tringites subruficollis</i>	East "	4 Sept	85.3	♂ imm.	Max C. Thompson 4185 Extra Heavy fat
110265 ✓	<i>Passerculus sandwichensis</i>	Staraya Artil "	"	27.0	♂ imm.	" 4186 heavy fat
110266 ✓	<i>Puffinus tenuirostris</i>	2 mile North of North Rookery St George	"	595.3	♂ Testes 9x5 mm	R. DeLong 122 gullet & stomach contents saved Heavy fat
110267 ✓	<i>Xema sabini</i>	Staraya Artil, St. George	"	-	♂ Ad.	Max C. Thompson 4187
110268 ✓	<i>Pluvialis dominica</i>	East "	3 "	142.2	♂ imm.	Robert DeLong 123
110269 ✓	<i>Arenaria</i> stomach	East "	3 Sept	-	♂	
110270 ✓	"	" "	"	-	♀	
110271 ✓	<i>Leucosticte tephrocotis</i>	Zapadni	" "	-	-	Max C. Thompson 4188
110272 ✓	"	"	"	-	-	" 4189
110273 ✓	"	"	"	-	-	" 4190
110274 ✓	"	"	"	-	-	" 4191

Skull 110275 ✓	<i>Leucostethus leucocatus</i>	Zapadni, St. George Is.	4 Sept	1965	-	♀	Max C. Thompson	4192
Skull 110276 ✓	"	"	"	"	-	♀	"	4193
Skull 110277 ✓	"	"	"	"	-	♀	"	4194
Skull 110278 ✓	"	"	"	"	-	♂	"	4195
alc 110279 ✓	" nestlings (5)	"	"	"	-	-	"	4196
Skull 110280 ✓	<i>Anthus spindella</i>	"	"	"	25.1	♀	R. L. DeLong	124
110281	<i>Lemmus nigripes</i>	Seal Lake "	10 Sept	1965	64.0	♂	R. L. DeLong	125 139-12-17-10
110282	"	"	"	"	71.9	♀	"	127 141-15-17-9
110283	"	"	11 Sept	"	53.1	♀ 3CL left 1CL right	"	128 128-11-17-8 No skull
84	"	"	"	"	38.8	♂ Testis 7x5	"	129 117-12-17-7 No skull
85	"	"	"	"	23.5	♂ Testis 4x3 mm	"	130 98-9-18-7 imm. Mallophaga proved moderate fat
110284 ✓	<i>Calidris canutus</i>	Salt Lagoon, St. Paul Is.	12 Sept		136.8		R. L. DeLong	131
110287 ✓	<i>Crocethia alba</i>	"	"	"	55.7	♀ imm.	Max C. Thompson	4197 Heavy fat
alc 110288 ✓	<i>Erolia ptilocnemis</i>	"	"	"	105.6	-	"	4198
alc. 110289 ✓	"	"	"	"	97.1	-	"	4199
110290	<i>Rhodostethia rosea</i>	Lukamin Beach "	June	1964	-	♂ Testis 8x5 mm	"	4200 Collected by Alexei Steptanov Jr.
110291	<i>Polysticta stelleri</i>	SE George Island	26 Dec	1964	-	♂	R. L. DeLong	132 Agafangle Murchief
110292 ✓	<i>Capella gallinago</i>	NE Pt. St. Paul Is. Alaska	16 Sept	1965	116.6	♀	R. L. DeLong	133 Heavy fat
110293 ✓	<i>Ereunetes mauri</i>	"	"	"	27.5	♂ Imm.	Max C. Thompson	4201 Heavy fat
110294 ✓	"	"	"	"	26.2	♂ Imm.	"	4202 Heavy fat
110295 ✓	<i>Erolia alpina</i>	"	"	"	54.0	♀ Imm.	R. L. DeLong	134 Moderate fat
110296 ✓	<i>Zonotrichia atricapilla</i>	Black Diamond Hill, St. Paul Is.	17	"	37.5	♀ Imm.	Max C. Thompson	4203 Heavy fat
110297 ✓	"	"	"	"	33.7	♀ Imm.	"	4204 Heavy fat
110298	<i>Passerella iliaca</i>	NE Pt. St. Paul Is.	18	"	46.6 46.6	♀ Imm.	"	4205
alc 110299 ✓	<i>Erolia acuminata</i>	Little Polovina, St. Paul Is.	"	"	73.7	♀	"	42088
110300 ✓	<i>Chen caerulescens</i>	St. George Is.	13	"	-	♀	Robert DeLong	135 Agafangle Murchief
110301 ✓	<i>Dendroica petechia</i>	NE Point, St. Paul Is.	18	"	11.2	♂ Imm.	Max C. Thompson	4206 moderate fat
alc 110302 ✓	<i>Erolia acuminata</i>	NE Point, "	18	"	67.0		"	4207 4207

Discarded

Start Scopus

Specimen No.	Species	Latitude	Longitude	Date	Weight	Sex	Notes	Collector	Tag No.	Other
110303	<i>Puffinus tenuirostris</i>	52° 15' N	172° 57' E	2 Oct 1965	626.5	♂	no molt, testes small, heavy fat	Max C. Thompson	4209	Frozen
110304	"	"	"	"	573.9	♀	light body molt, ovary granular, heavy fat	Robert L. DeLong	136	Frozen
110305	<i>Oceanodroma leucorhoa</i>	"	"	"	"	"	"	Max C. Thompson	4210	Frozen
110306	<i>Diomedea immutabilis</i>	51° 19' N	172° 46' E	4	"	"	"	Robt. L. DeLong	137	Fz.
110307	<i>Uria lomvia</i>	51° 19' N 50° 19' N	172° 59' E	5	"	"	"	Taken in Net	Alcoholic	Flightless
110307	<i>Puffinus griseus</i>	49° 43' N	172° 58' E	7	"	"	"	Max C. Thompson		
110308	<i>Puffinus griseus</i>	49° 43' N	172° 58' E	"	819.0	"	"	Max C. Thompson	4211	Taken from skiff
110309	"	"	"	"	854.5	"	"	"	4212	
110310	"	"	"	"	802.8	♀?	heavy fat, light neck molt	"	4213	
110311	"	"	"	"	873.5	"	"	"	4214	
110312	"	"	"	"	744.2	♂	heavy fat, light neck molt, testis small	"	4215	
110313	"	"	"	"	846.0	"	"	"	4216	
110314	"	"	"	"	837.9	♀	ovary granular, heavy fat, heavy neck molt, light breast molt	"	4217	
110315	"	"	"	"	790.5	"	"	"	4218	
110316	"	"	"	"	803.5	"	"	"	4219	
110317	<i>Stercorarius pomarinus</i>	"	"	"	730.2	"	"	"	4220	body molt
110318	<i>Lunda cirrhata</i>	"	"	"	827.6	"	"	"	4221	
110319	<i>Oceanodroma furcata</i>	"	"	"	59.1	"	no molt	"	4222	
110320	<i>Pterodroma inexpectata</i>	49° 32' N	173° 00' E	"	372.1	♀	imm. moderate fat, largest ovum 2mm, heavy body molt	Robt. L. DeLong	138	light belly feather molt, Nalophaga & Feather mites saved
110321	<i>Lunda cirrhata</i>	48° 40' N	172° 59' E	8	-	"	"	"	139	Gill Net
110322	"	"	"	"	-	"	"	"	140	"
110323	<i>Fulmarus glacialis</i>	48° 05' N	173° 00' E	"	695.2	"	heavy molt entire body except primaries, ovary granular	Max C. Thompson	4223	Taken from skiff
110324	<i>Stercorarius pomarinus</i>	"	"	"	875.0	"	"	Robert DeLong	141	
110325	"	"	"	"	920.0	"	"	"	142	
110326	<i>Puffinus griseus</i>	47° 55' N	173° 00' E	"	872.0	♂	heavy fat, 67x5mm, no molt	Max C. Thompson	4224	
110327	"	"	"	"	1002.9	♀	7x5mm, no molt, heavy fat, light breast molt	"	4225	
110328	"	"	"	"	805.0	♂	testis small, heavy fat	"	4226	
110329	"	"	"	"	869.5	♀	ovary granular, light neck molt, heavy fat	"	4227	
110330	<i>Diomedea nigripes</i>	47° 18' N	173° 13' E	9	3410 + fg	"	"	R. DeLong	143	Banded #697-73041

#	species	location	Date	Wgt	Sex	Remarks
110331	Diomedea nigripes ^{alc.} <i>Diomedea nigripes</i>	47° 13' 3" N 173° 18' 4" E	1330 9 October 1965	3110	♂ Too Heavy	R.L. DeLong Band # 737-45140
110332	" "	47° 03' N 173° 16' E	1520 11 " "		♂ Too Heavy	" " 145 " # 737-45577
110333	^{alc.} <i>Puffinus griseus</i>	46° 00' N 173° 38' E	10 " "	-		" " 146 Taken in gird net
110334	" "	45° 51' N 173° 02' E	12 " "	749.8	♀ Ovary 12x4 mm VERY FAT (SMOOTH)	" " 147
110335	" "	" "	" " "	1005.0	? R. TESTIS 9.5x5 mm L. TESTIS 12x5 mm VERY FAT	" " 148 Taken in net
110336	" "	" "	" " "	896.0	?	" " 149
110337	" "	" "	" " "	924.5	?	Max C. Thompson 4228
110338	" "	" "	" " "	915.0	?	" " 4229 Taken wet
110339	<i>Puffinus carneipes</i>	" "	" " "	624.7	♀ Ovary 11x3 mm LARGEST OVA 2 mm LIGHT FAT	" " 4230
110340	" "	" "	" " "	727.8	Heavy fat ♀ largest ova 2 mm	" " 4231
110341	" "	" "	" " "	797.5	Heavy fat ♂ Testis 8x4 mm	" " 4232
110342	" "	" "	" " "	640.0	♀ Ovary 10x4 mm OVA MINUTE MODERATE FAT	" " 4233
110343	" "	" "	" " "	664.4		" " 4234
110344	" "	" "	" " "	737.5	♀ Ovary 15x4 mm LARGEST OVA 2 mm	Robert DeLong 150
110345	" "	" "	" " "	791.0		" " 151
110346	" "	" "	" " "	747.8	ONE TESTIS - 11x2 OVUM VISIBLE ♂ 7x3 mm - black jt. Heavy fat	VERY FAT " 152
110347	" "	" "	" " "	732.2	♂ Testis 8x5 mm	" " 153
110348	" "	" "	" " "	664.3		" " 154
110349	<i>Puffinus bulleri</i>	" "	" " "	439.6		" " 155 Mallophaga
110350	" "	" "	" " "	423.7	moderate fat ♂ Testis 5x4 mm	" " 156
110351	" "	" "	" " "	463.8	moderate fat ♂ Testis 3x4 mm	" " 157
110352	" "	" "	" " "	403.6	light recent molt ♂ Testis 4x3 mm	stomach saved light fat Max C. Thompson 4235
110353	" "	" "	" " "	462.2	♀ light recent molt light fat	" " 4236
110354	" "	" "	" " "	369.4	♀ ovary 10x3 mm light fat	" " 4237
110355	<i>Puffinus pacificus</i>	" "	" " "	505.5	2nd yr. bird imm	" " 4238
110356	" "	" "	" " "	402.8	" imm	" " 4239
110357	" "	" "	" " "	444.5	" imm	" " 4240
110358	<i>Diomedea immutabilis</i>	44° 25' N 173° 02' E	13 " "		Too Heavy	R.L. DeLong 158 ^{13 banded} 737-96286
110359	<i>Fulmarus glacialis</i>	44° 38' N 173° 05' E	16 " "	442.5		Max C. Thompson 4241 Found dead emaciated

110360

Catharacta skua

45° 20' N

173° 00' E

16 Oct

1965

1910.19 gms

4mm
♀ largest ova

molting primaries
heavy body molt

moderate fat
Max C. Thompson 4242

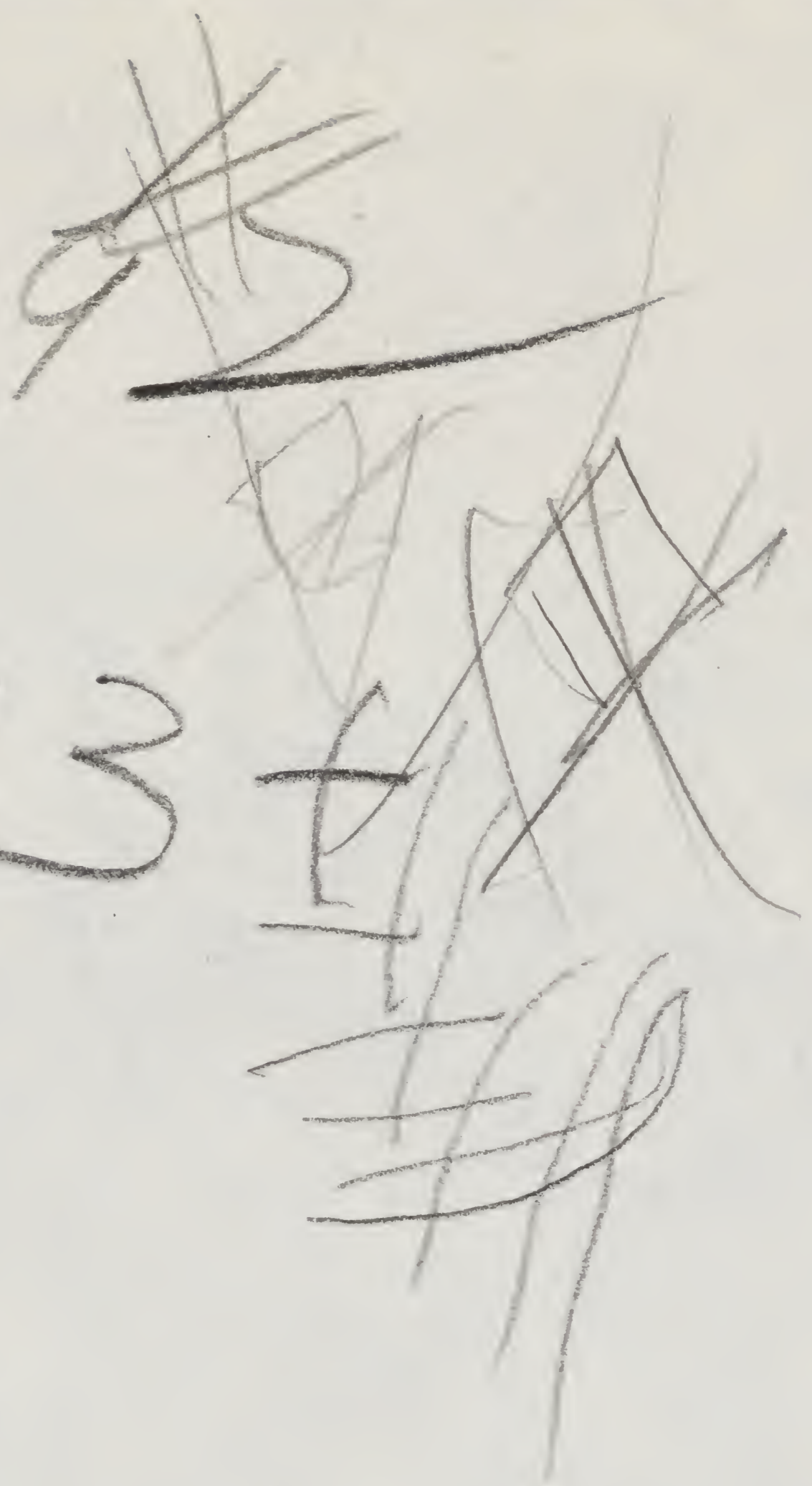
110.

Handwritten notes in red ink on the left page of an open notebook. The notes include a small diagram with arrows and a wavy line, and the phrase "from the" written upside down.

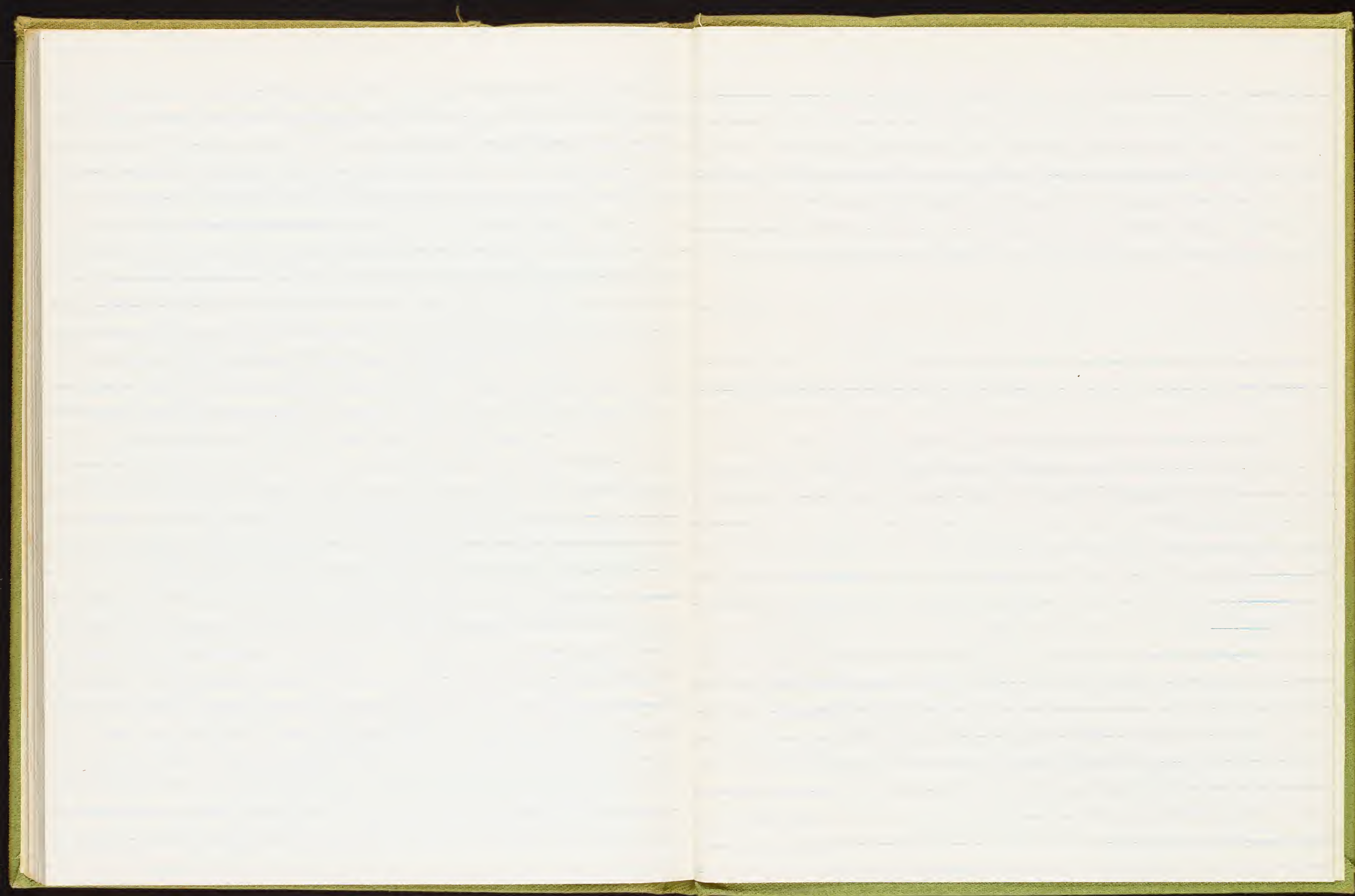


from the

563-169

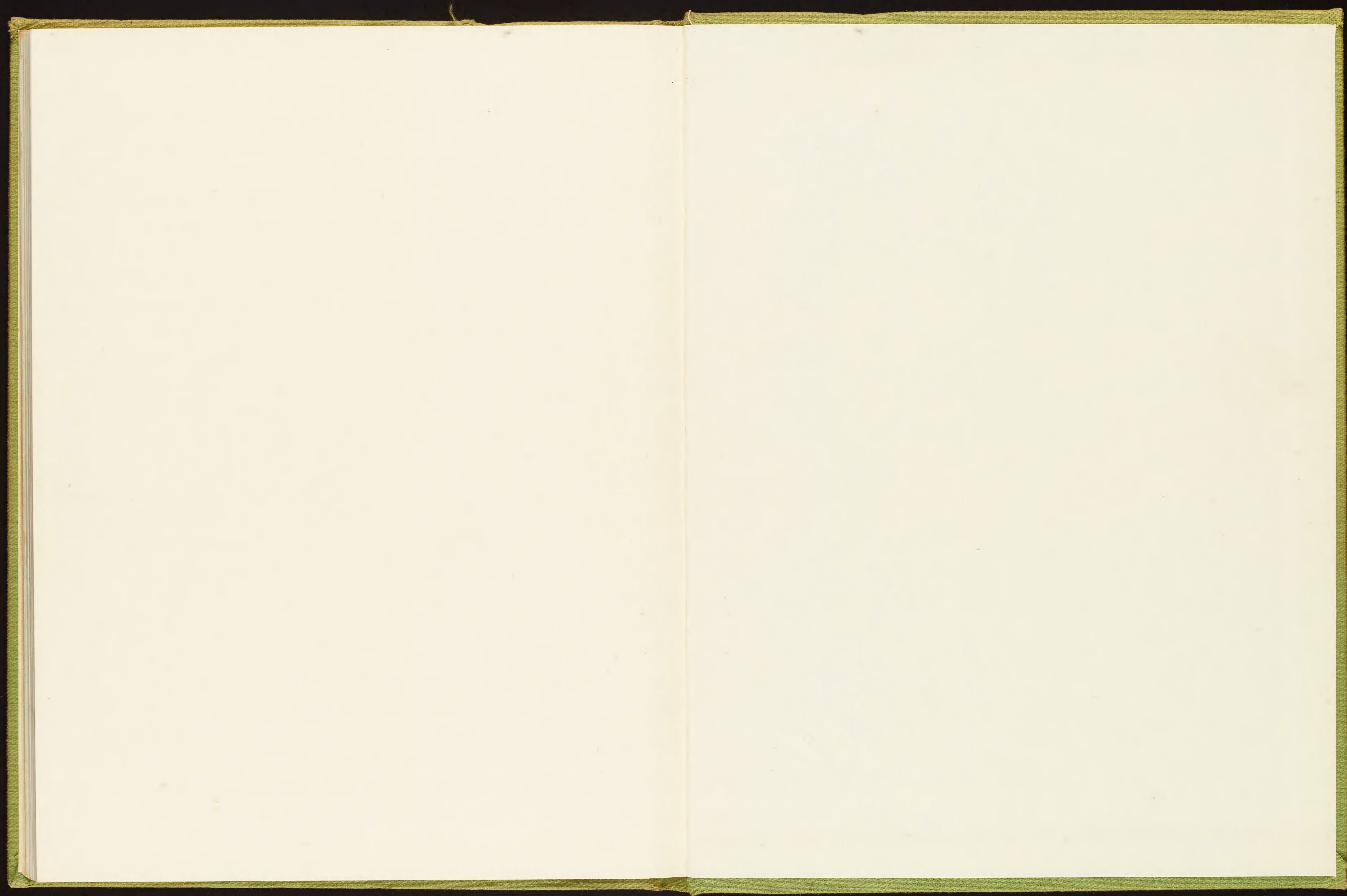


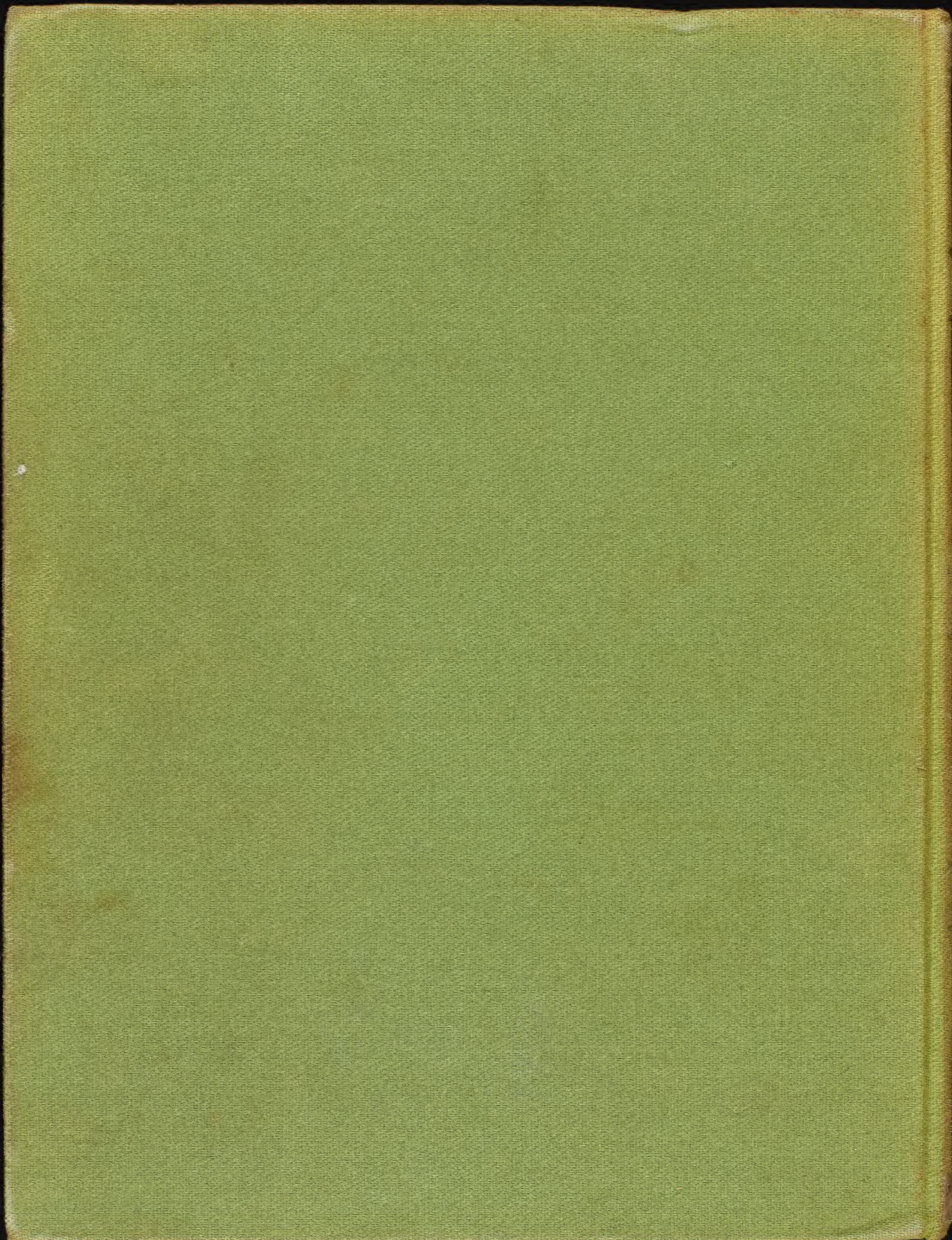
563-1693



[Faint, illegible text on a lined page]

[Faint, illegible text on a blank page]





Start 3 copies

Specimen ID	Species	Latitude	Longitude	Count	Date	Weight	Collector	Notes
110303	<i>Puffinus tenuirostris</i>	52° 15' N	172° 57' E	2	Oct 1965	626.5	Max C. Thompson	420 ^f frozen
110304	"	"	"	"	"	573.9	Robert L. DeLong	136 frozen
110305	<i>Oceanodroma leucorhoa</i>	"	"	"	"		Max C. Thompson	4210 frozen
110306	<i>Diomedea immutabilis</i>	51° 19' N	172° 46' E	4	"		Robt. L. DeLong	137 frozen
110307	<i>Uria lomvia</i>	51° 19' N 50° 19' N	172° 09' E	5	"		Taken in Nets	Alcoholic Flightless
110307	<i>Puffinus griseus</i>	49° 42' N	172° 58' E	7	"		Max C. Thompson	
110308	<i>Puffinus griseus</i>	49° 43' N	172° 58' E	11	"	819.0	Max C. Thompson	4211 Taken from skiff
110309	"	"	"	"	"	854.5	"	4212
110310	"	"	"	"	"	802.8	"	4213
110311	"	"	"	"	"	873.5	"	4214
110312	"	"	"	"	"	744.2	"	4215
110313	"	"	"	"	"	846.0	"	4216
110314	"	"	"	"	"	837.9	"	4217
110315	"	"	"	"	"	790.5	"	4218
110316	"	"	"	"	"	803.5	"	4219
110317	<i>Stercorarius pomarinus</i>	"	"	"	"	730.2	"	4220 Body molt
110318	<i>Lunda cirrhata</i>	"	"	"	"	827.6	"	4221
110319	<i>Oceanodroma furcata</i>	"	"	"	"	59.1	"	4222
110320	<i>Pterodroma inexpectata</i>	49° 32' N	173° 00' E	"	"	372.1	Robt. L. DeLong	138 light belly feather molt Mallophaga f Feather mites saved
110321	<i>Lunda cirrhata</i>	48° 40' N	172° 59' E	8	"	-	"	139 Gull Net
110322	"	"	"	"	"	-	"	140
110323	<i>Fulmarus glacialis</i>	48° 05' N	173° 00' E	"	"	695.2	Max C. Thompson	4223 Taken from skiff
110324	<i>Stercorarius pomarinus</i>	"	"	"	"	895.0	Robert DeLong	141
110325	"	"	"	"	"	920.0	"	142
110326	<i>Puffinus griseus</i>	47° 55' N	173° 00' E	"	"	872.0	Max C. Thompson	4224
110327	"	"	"	"	"	1002.9	"	4225
110328	"	"	"	"	"	805.0	"	4226
110329	"	"	"	"	"	869.5	"	4227
110330	<i>Diomedea nigripes</i>	47° 18' N	173° 13' E	9	" 1250"	3010 off gm	R L DeLong	143 Banded #697-73041

#	species	location		Date	Wgt	Sex	Remarks
110331	<i>Diomedea nigripennis</i>	47° 18' ³ 173° 18' ⁴ E	1330	9 October 1965	3110	♂ ^{Too Heavy}	R.L. DeLong Band # 737-45140
110332	" "	47° 03' N 173° 16' E	1520	11 " "		♂ ^{Too Heavy}	" 145 " # 737-45577
110333	<i>Puffinus griseus</i>	46° 00' N 173° 38' E		10 " "	-		" 146 Taken in gill net.
110334	"	45° 51' N 173° 02' E		12 " "	749.8		" 147
110335	"	" "		" " "	1005.0 ?		" 148 Taken in net
110336	"	" "		" " "	896.0 ?		" 149 "
110337	"	" "		" " "	924.5 ?		Max C. Thompson 4228 "
110338	"	" "		" " "	915.0 ?		" wet 4229 Taken in net
110339	<i>Puffinus carneipes</i>	" "		" " "	624.7		" 4230
110340	"	" "		" " "	727.8		" 4231
110341	"	" "		" " "	797.5		" 4232
110342	"	" "		" " "	640.0		" 4233
110343	"	" "		" " "	664.4		" 4234
110344	"	" "		" " "	737.5		Robert DeLong 150
110345	"	" "		" " "	791.0		" 151
110346	"	" "		" " "	747.8		" 152
110347	"	" "		" " "	732.2		" 153
110348	"	" "		" " "	664.3		" 154
110349	<i>Puffinus bulleri</i>	" "		" " "	439.6		" 155 Mallorbyga
110350	"	" "		" " "	423.7		" 156
110351	"	" "		" " "	463.8		" 158
110352	"	" "		" " "	403.6		Max C. Thompson 4235
110353	"	" "		" " "	462.2		" 4236
110354	"	" "		" " "	369.4		" 4237
110355	<i>Puffinus lhermannieri</i>	" "		" " "	505.5	2nd yr. imm	" 4238
110356	"	" "		" " "	402.8	" imm	" 4239
110357	"	" "		" " "	444.5	" imm	" 4240
110358	<i>Diomedea immutabilis</i>	44° 25' N 173° 02' E		13 " "		♂ ^{Too Heavy}	R.L. DeLong 158 ^{13 banded} # 737-96286
110359	<i>Fulmarus glacialis</i>	44° 38' N 173° 05' E		16 " "	442.5		Max C. Thompson 4241 Found dead emaciated

110360

Cathartes aura

45°20'N

173°00'E

16 Oct

1965

1910.19ms

Max C. Thompson 4242

Collection Record
R/V George B. Kelez
Cruise 16
October 1965