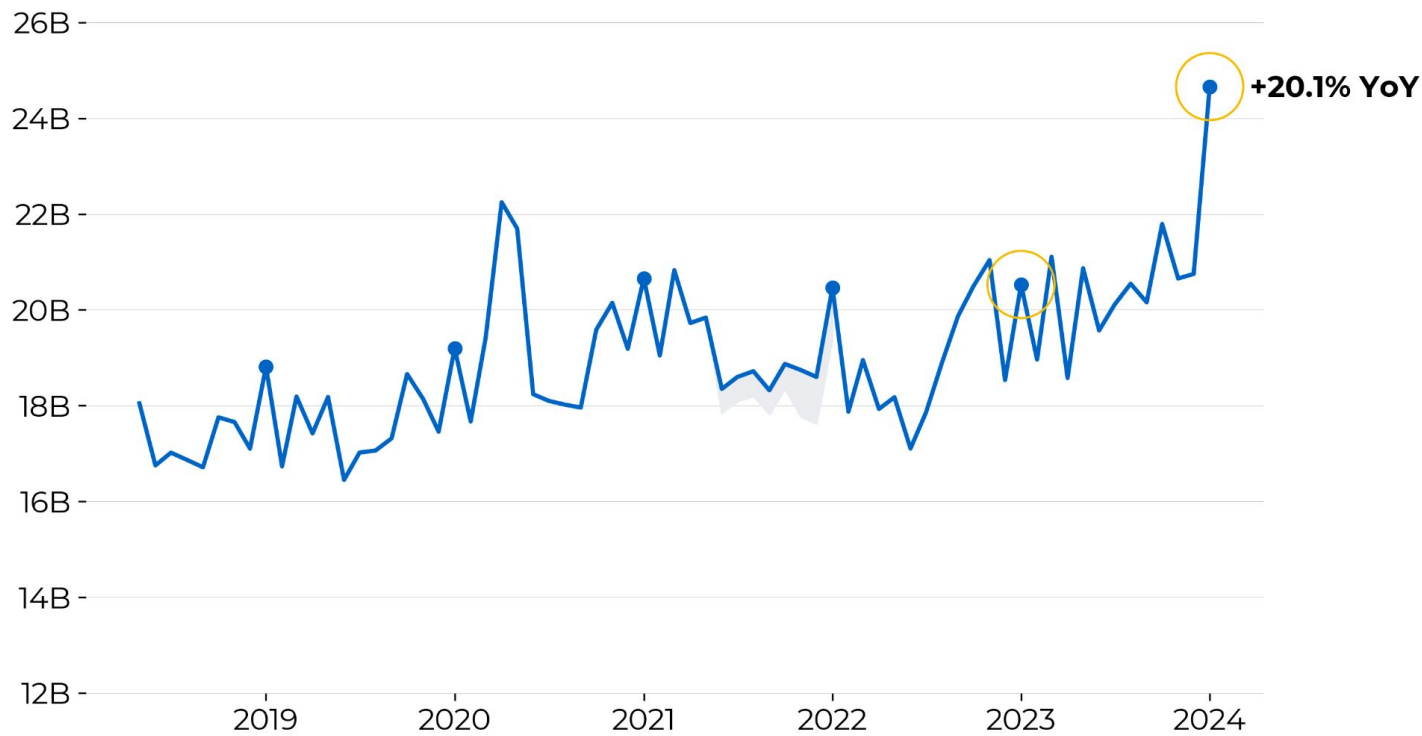


January 2024 Wikimedia movement metrics

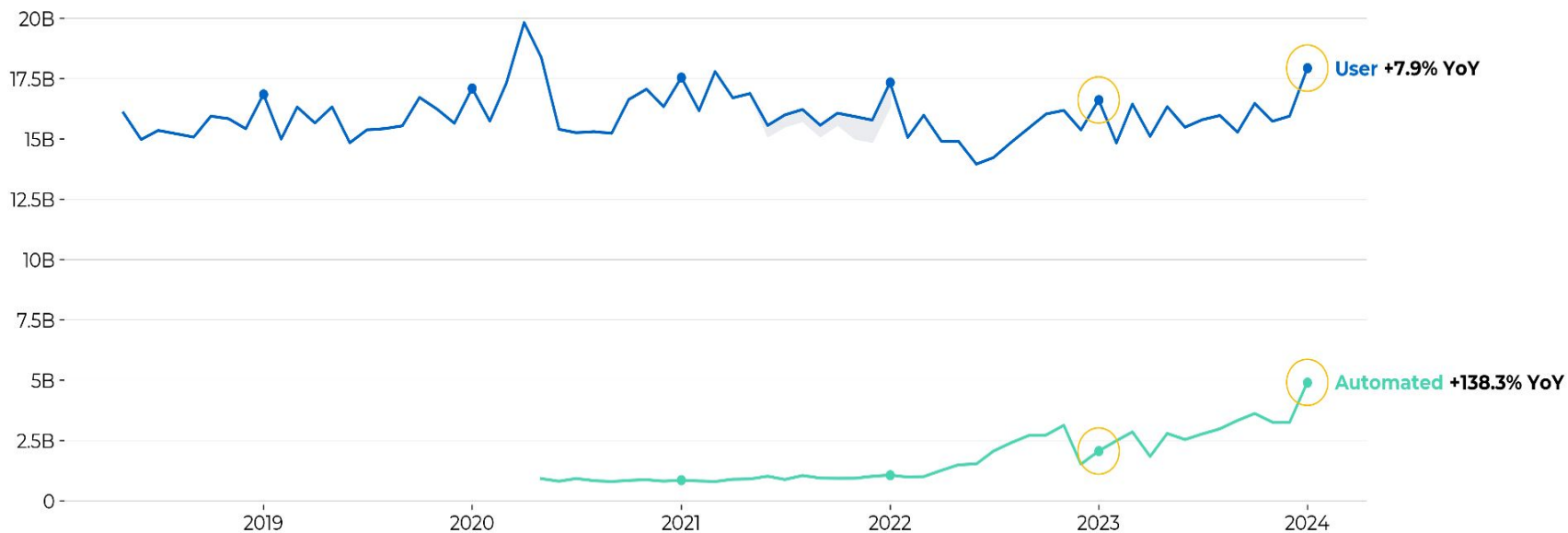
Content interactions (January): Across Wikimedia, there were 24.7B content interactions in January, a 20.1% YoY increase



Graph Notes: Created by Movement Insights on 2024-02-13 using data from <https://github.com/wikimedia-research/Reader-movement-metrics>

Explore [Content Metrics](#), [Readers Metrics](#) and [Editors Metrics](#) in Superset. Monthly aggregates are also available in Sheets: [Editors & Content](#) and [Readers](#). For metric definitions, see the [Product data glossary](#). For questions: [#insights-and-data](#)

Pageviews (January): Increases in content interactions were primarily driven by automated pageviews from Google Chrome [private prefetch](#). User pageviews increased by nearly 8% YoY.



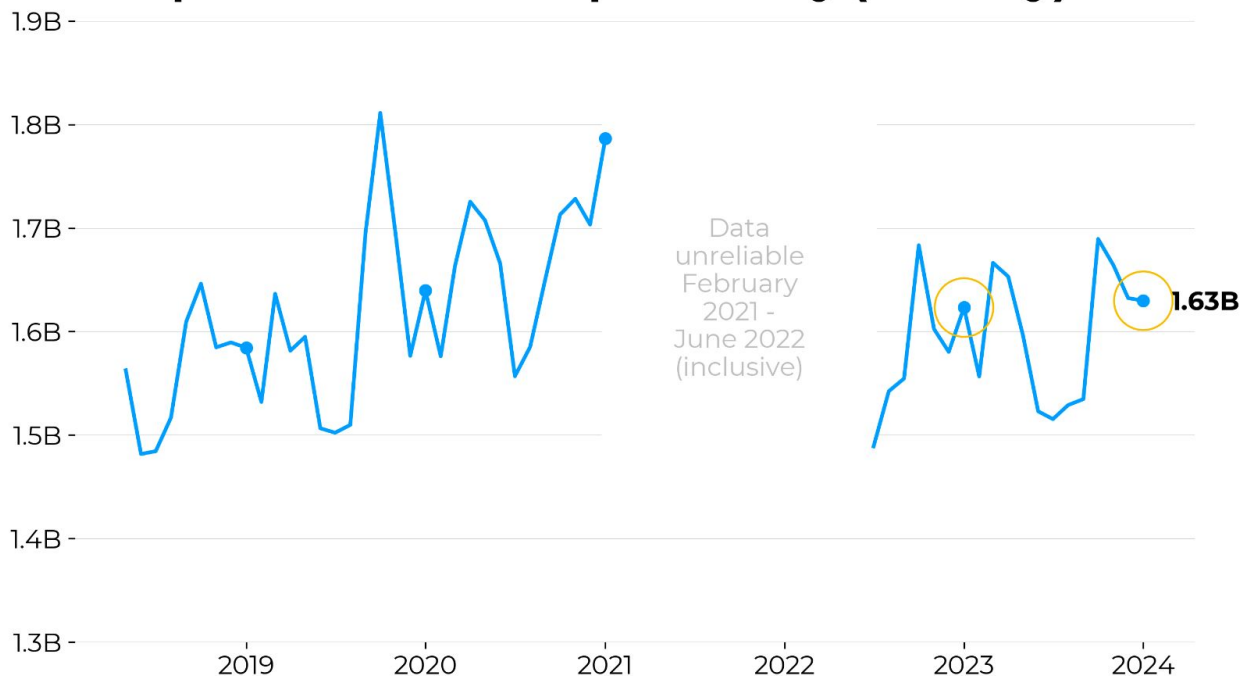
Graph Notes: Created by Movement Insights on 2024-02-13 using data from <https://github.com/wikimedia-research/Reader-movement-metrics>

Explore [Content Metrics](#), [Readers Metrics](#) and [Editors Metrics](#) in Superset. Monthly aggregates are also available in Sheets: [Editors & Content](#) and [Readers](#). For metric definitions, see the [Product data glossary](#). For questions: [#insights-and-data](#)

Unique devices increased YoY

January's data reveals a .4% YoY increase and the sustained count of unique devices just beyond 1.6 billion

Unique Devices - Wikipedia Only (January)



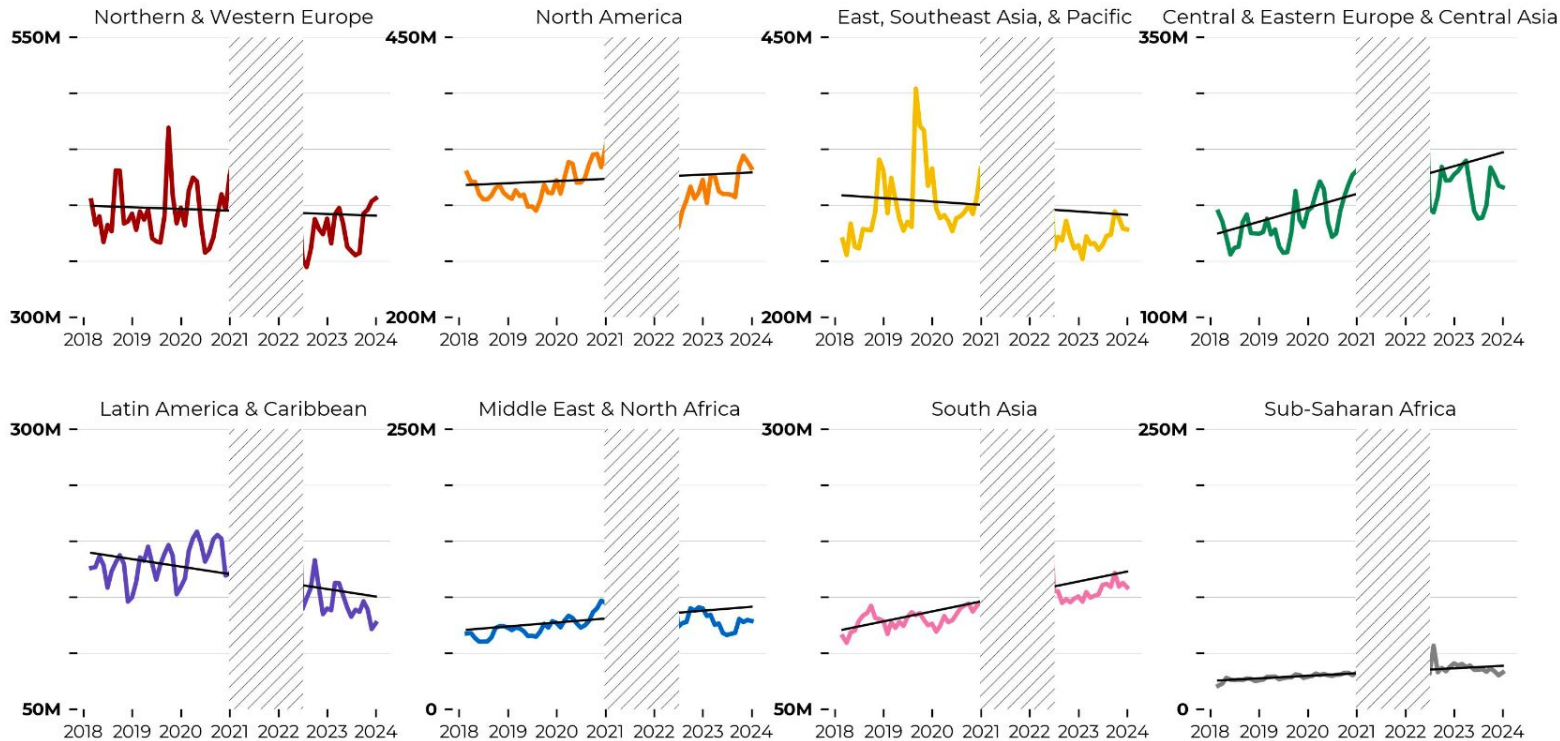
Graph Notes: Created by Movement Insights on 2024-02-13 using data from <https://github.com/wikimedia-research/Readers-movement-metrics>

Explore [Content Metrics](#), [Readers Metrics](#) and [Editors Metrics](#) in Superset. Monthly aggregates are also available in Sheets: [Editors & Content](#) and [Readers](#).

For metric definitions, see the [Product data glossary](#). For questions: [#insights-and-data](#)

Regional Unique Devices (January)

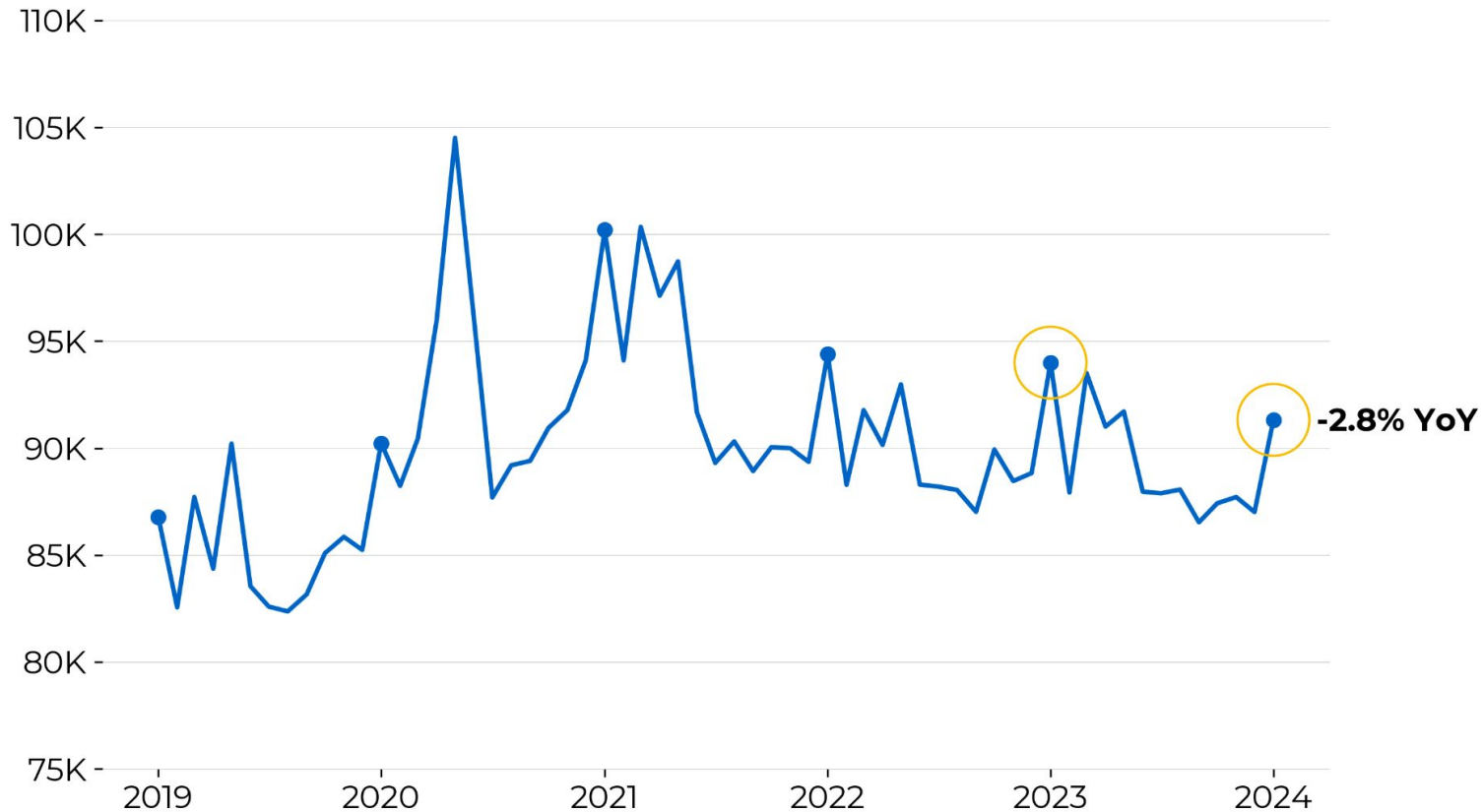
▨ Data unreliable [February 2021 - June 2022] (period not shown)



Graph Notes: Created by Movement Insights 2024-02-13 using data from https://docs.google.com/spreadsheets/d/13XrrnCaz9qsKs5Gu_IUs2jtsK9VrSiGIiICleDgR6KM

Explore [Content Metrics](#), [Readers Metrics](#) and [Editors Metrics](#) in Superset. Monthly aggregates are also available in Sheets: [Editors & Content](#) and [Readers](#). For metric definitions, see the [Product data glossary](#). For questions: [#insights-and-data](#)

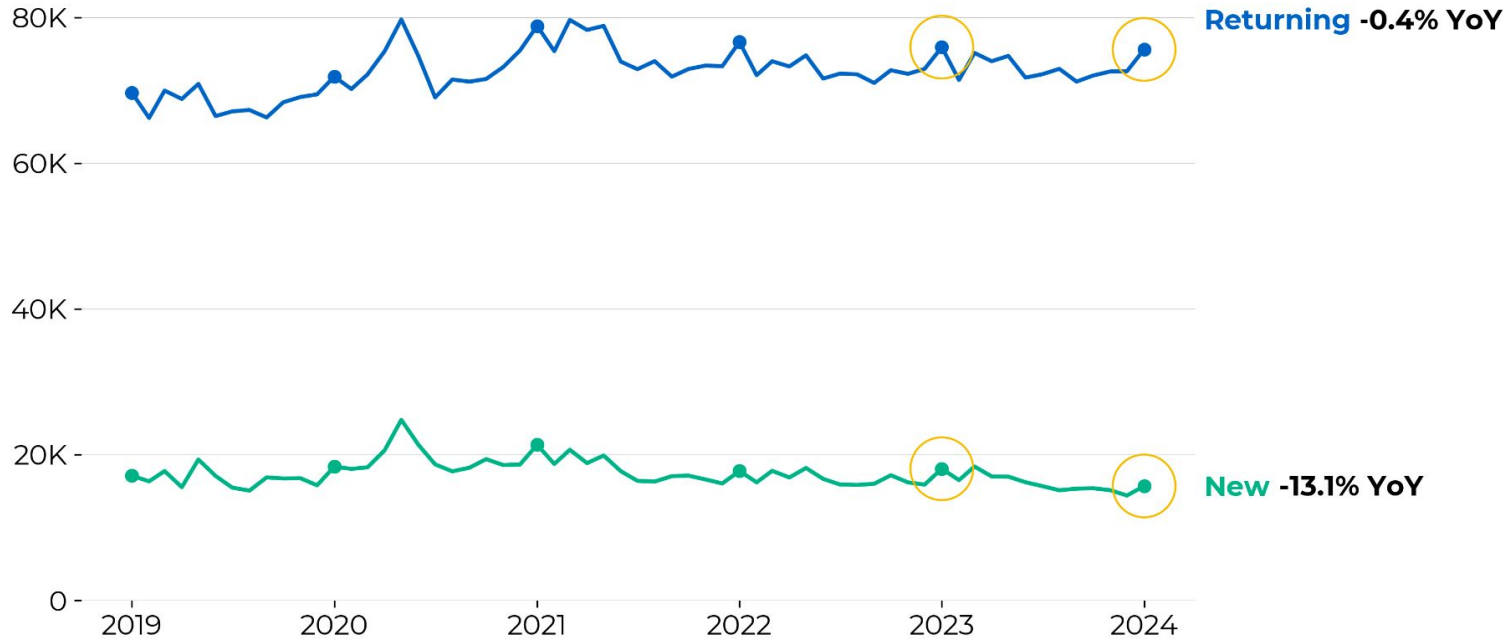
Active editors decreased by 2.8% YoY to 91k in January.



Graph Notes: Created by Movement Insights on 2024-02-13 using data from <https://github.com/wikimedia-research/Editing-movement-metrics>

Explore [Content Metrics](#), [Readers Metrics](#) and [Editors Metrics](#) in Superset. Monthly aggregates are also available in Sheets: [Editors & Content](#) and [Readers](#). For metric definitions, see the [Product data glossary](#). For questions: [#insights-and-data](#)

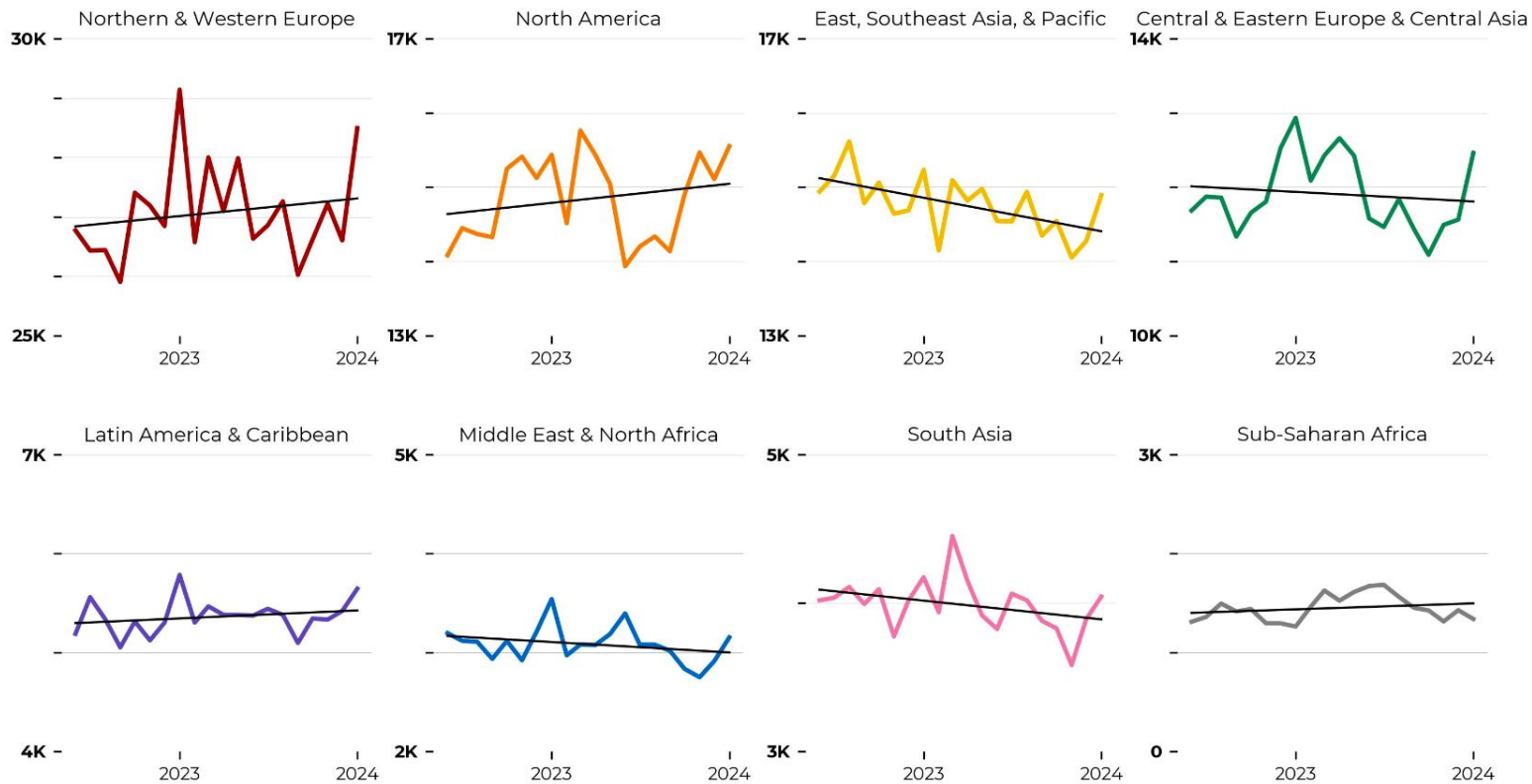
In January, returning editors decreased slightly by 0.4% YoY while new editors decreased significantly by 13.1% compared to this time last year.



Graph Notes: Created by Movement Insights on 2024-02-13 using data from <https://github.com/wikimedia-research/Editing-movement-metrics>

Explore [Content Metrics](#), [Readers Metrics](#) and [Editors Metrics](#) in Superset. Monthly aggregates are also available in Sheets: [Editors & Content](#) and [Readers](#). For metric definitions, see the [Product data glossary](#). For questions: [#insights-and-data](#)

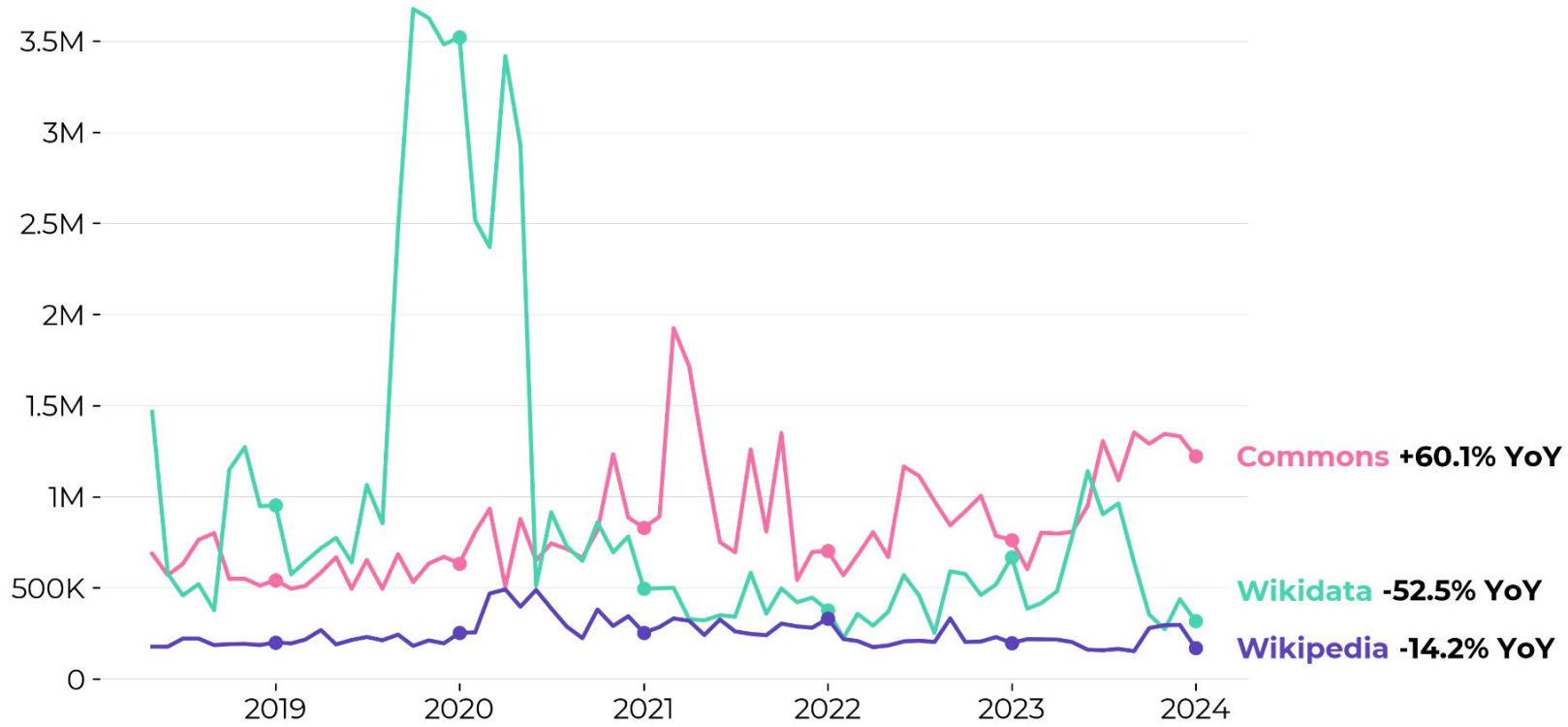
Regional Active Editors (January)



Graph Notes: Created by Movement Insights 2024-02-13 using data from https://docs.google.com/spreadsheets/d/13XrrnCaz9qsKs5Gu_IUs2jtsK9VrSiGIlICeDgR6KM

Explore [Content Metrics](#), [Readers Metrics](#) and [Editors Metrics](#) in Superset. Monthly aggregates are also available in Sheets: [Editors & Content](#) and [Readers](#). For metric definitions, see the [Product data glossary](#). For questions: [#insights-and-data](#)

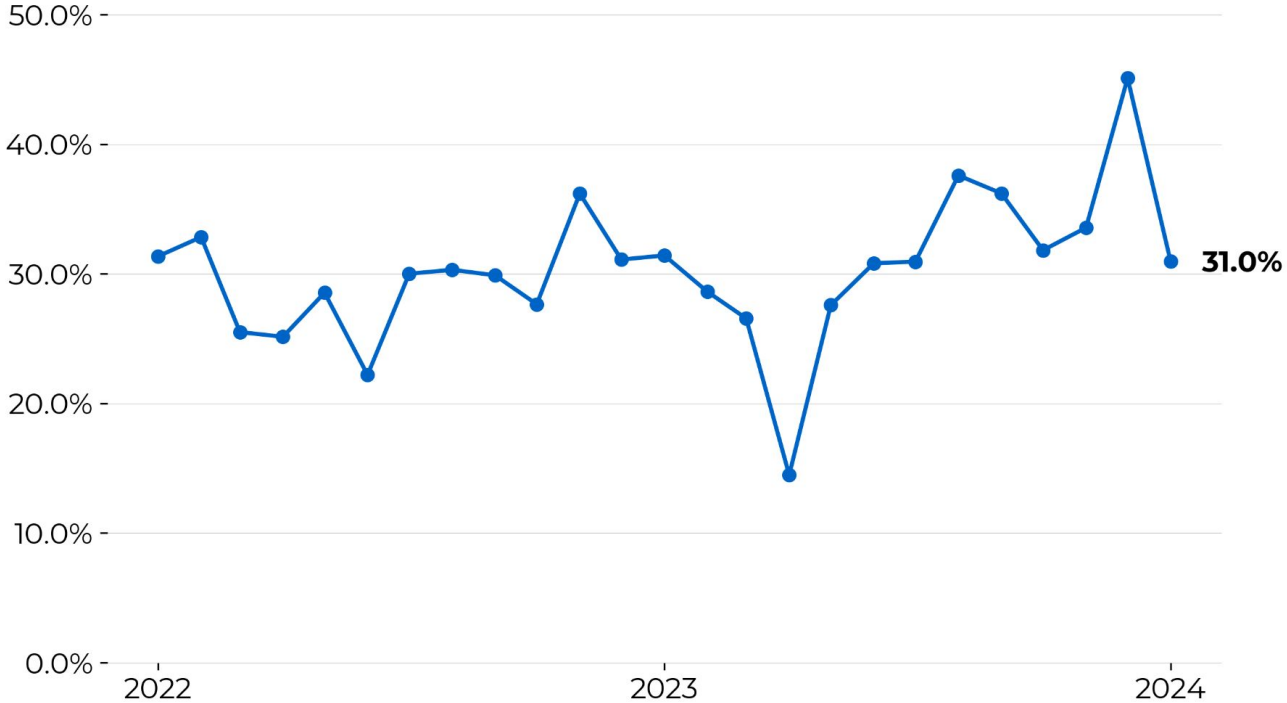
In January, net new content increased on Commons and decreased on Wikipedia and Wikidata.



Graph Notes: Created by Movement Insights on 2024-02-13 using data from <https://github.com/wikimedia-research/Editing-movement-metrics>

Explore [Content Metrics](#), [Readers Metrics](#) and [Editors Metrics](#) in Superset. Monthly aggregates are also available in Sheets: [Editors & Content](#) and [Readers](#). For metric definitions, see the [Product data glossary](#). For questions: [#insights-and-data](#)

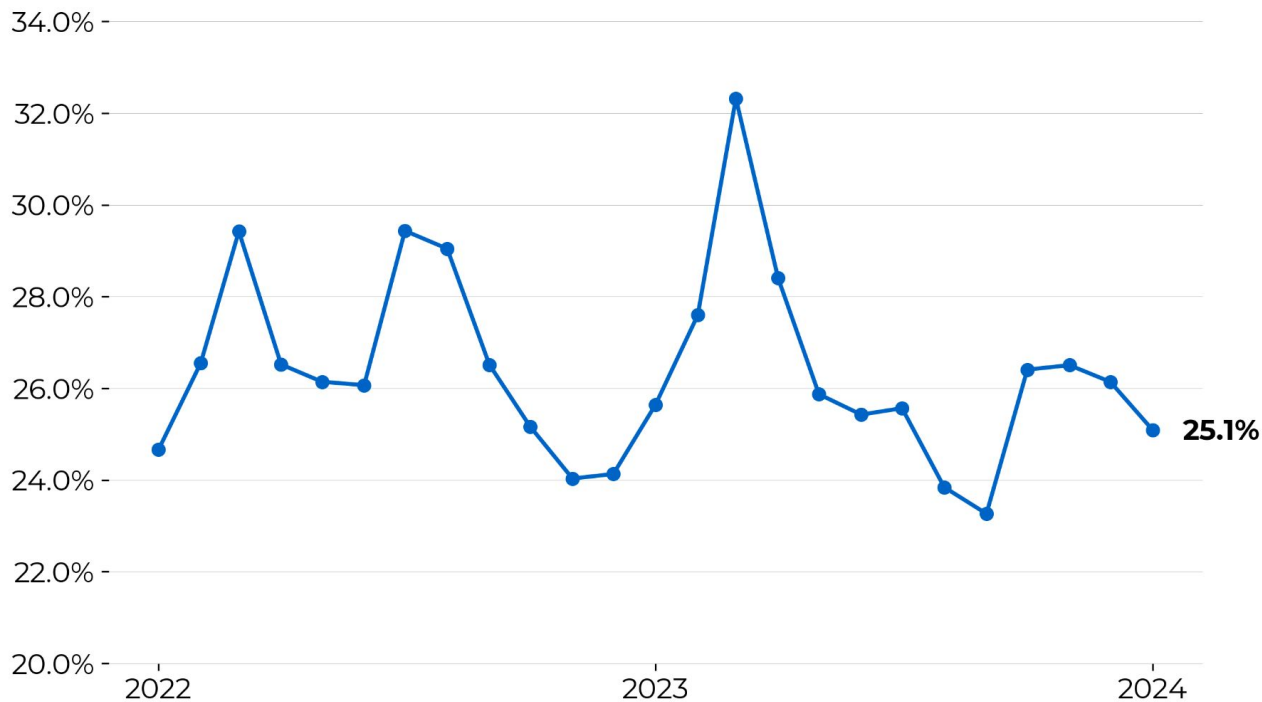
In January, 31% of new quality articles about geographic content were about content from underrepresented regions.



Graph Notes: Created by Movement Insights on 2024-02-28 using data from the Knowledge Gap Index

Explore [Content Metrics](#), [Readers Metrics](#) and [Editors Metrics](#) in Superset. Monthly aggregates are also available in Sheets: [Editors & Content](#) and [Readers](#). For metric definitions, see the [Product data glossary](#). For questions: [#insights-and-data](#)

In January, the percentage of new biographical articles about women and gender diverse people dropped slightly to 25.1%



Graph Notes: Created by Movement Insights on 2024-02-28 using data from the Knowledge Gap Index