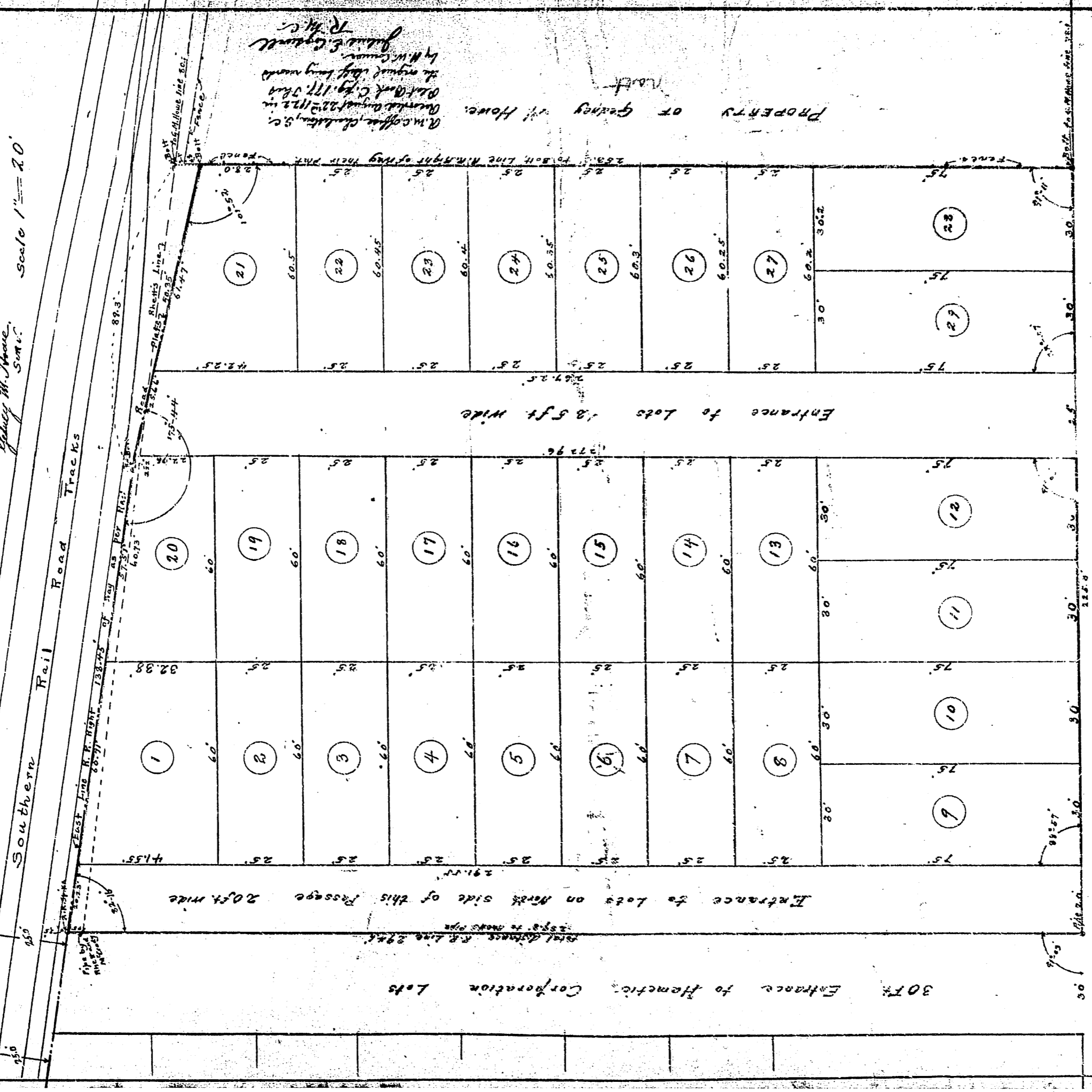


Plat Showing Subdivision of Property Situate on the West side of Meeting Street between City Boundary and Brigade Street extended, into 29 Lots. Surveyed, Stated out and Platted according to Plats of record, at the request of Owners. Charleston, S.C. March 15th 1922.

By *Hubert M. Shawe*
S.M.C. scale 1" = 20'

PLAN FILE
DRAWER
FOLDER
16
DRAWING NO. 15



MEETING STREET 70 FT

Consolidated Trolley Tracks