

Historic, Archive Document

Do not assume content reflects current scientific knowledge, policies, or practices.



62.41

LIBRARY
RECEIVED
★
U. S. Department of Agriculture

Baldwin's Fruit Plants

1919



O.A.D. BALDWIN
BRIDGMAN, MICH.



Gibson

*The Most Profitable
Strawberry Grown*

Buy GIBSON This Year *We Fully Guarantee Them*

For several years we have recommended Gibson as the best all-around Strawberry, and we have not yet found its equal as a money maker.

The berries are large and of beautiful dark red color and extra fine appearance. Gibson plants out-yield other varieties and Gibson berries outsell other berries on the market. That is certainly recommendation enough, but we want to add that the Gibson is also an extra nice table or home use strawberry. The plants are strong growers, long rooted and probably the most thrifty and healthy looking variety we have on our farms. Gibson commences to ripen with the second earlies and continues for a long season, making a heavy yield of fruit.

The fruit stems are large and strong; and the dark green foliage is ample protection for the blossoms and fruit; having a strong staminate bloom, it makes a very good pollenizer for pistillate varieties. The berry is large and regular in shape, holding its size well to the end of the season; its color is a deep, rich red all through from surface to surface; its flavor is fine, being neither too sweet nor too sour, but just right for table or canning.

In manner of plant growth it very closely resembles Pocomoke, making a heavy row of very strong and healthy plants, its foliage being of a very dark and glossy green, not a speck of rust to be seen on our rows this season.

Gibson will please you and make you big profits as a market berry, or you will like it very much as a table and home use berry. If we were to grow only one variety of Strawberries, either for market or for general purposes, we would choose Gibson without any hesitation.

It is safe to say that here in Berrien County, the greatest berry county in the United States, probably two-thirds of the Strawberries grown are Gibson. That is the best proof we could give you that GIBSON IS THE BEST STRAWBERRY GROWN.

There will not be enough Gibson plants to go around this year, and we urge you to ORDER EARLY. Price, \$5.50 per thousand.

Gibson Plants grown the Baldwin way and Guaranteed by Baldwin
of Bridgman, Michigan.

BALDWIN'S

Greeting to Berry Growers



To my friends and customers I extend a most earnest and heartfelt peace greeting. When I addressed you one year ago, the world was at war, and such a cruel war it was. Our Nation was then getting ready—preparing for what has since proven to be the deciding factor in this world's conflict. In the early morning of November 11th this fair land of ours took on a smile of joy. The laughter rang out in glad jubilation—in noises of all conceivable descriptions. It was a happy day. Victory was at hand; the enemy had surrendered, and our republican form of government was triumphantly acclaimed, as ever after, the people's choice for government control and operation of National affairs, a form of government that fits itself to the little Nations as well as the larger ones.

I may be pardoned, therefore, if I greet you in line with my patriotic sentiments, because patriotism and business are co-partners in dealing with world's problems. We have fought a good fight, the victory seems to be complete, or it will be when the peace conference decides the world's program for all Nations—our allies and neutrals and our enemy Nations as well. It is a big job that confronts us. It calls for the best that is in us. It is comparatively easy to face danger when you know that there are millions in accord with the movement. It is not so easy to keep up the morale—courage and enthusiasm—when that danger is passed.

The reconstruction period calls for a more earnest endeavor on the part of all our citizens—it is the testing time of democracy. It is during this period that fruit growers can best serve their day and generation. We must increase the productivity of our farms; we must produce more food. This calls for intensive farming. Intensive farming is most profitable when brain and muscle are combined in the task. Where will you find a more intelligent, dependable, patriotic lot of citizens than the fruit growers, and where will you find more intensive farming methods than those practiced by the growers of berries, grapes, etc.?

It is my good fortune to be identified with a business along productive lines. I have dedicated my life to the industry. My father before me laid the foundation of the business in which I am engaged. I have a love for it, and never a greater love than right now, for the very good reason that I am convinced that I can render a service to the world of great value—I can with the help and co-operation of my friends and customers.

Europe for years to come will be burdened with debt, taxed to the limit for reconstruction purposes; the battlefields will have to be rejuvenated, and while all this is going on we here in America must produce the food to feed the starving millions until the world is made over and more nearly fit to care for itself. The opportunity is ours to serve. It is a time of home building, of character building, of definite purpose, of construction and reconstruction along permanent lines. The health, happiness and well-being of all human beings is our concern.

With these sentiments, my friends, I greet you in the hope and belief that the next few years will be the most profitable period for berry growers everywhere. May I have your continued loyal support and patronage, that my service may be of full measure and that together we may have that common satisfaction which results from honest endeavor and a true live-and-let-live business relation in a world at peace.

Very truly yours,

O. Baldwin

The question is often asked, "What's in a name?" The answer, so far as we are concerned, means everything—to us, our friends and customers. We want to emphasize this point because we think it is important for you to know more about us. We have no secrets and would like to have you come here and see every step we take in filling your plant orders. "B" stands for Baldwin. We like to make it large because of its importance. If this page were larger, we would probably have made the letter larger. We want you to know that so far as we have right to use the letter "B," it stands for

Baldwin's Big Business

We have tried to tell you something in this book about our business. If you were to visit Bridgman, you could see for yourself. Not all of our thousands of customers are privileged to see us personally and witness what we are doing. For that reason, we are trying to make it emphatic that our claim for preference, so far as the berry plant business is concerned, is well founded. Heretofore, we have been very modest in asserting ourselves, remembering, as we do, the small beginning that we made over a quarter of a century ago. We are telling you something about our past history on other pages. We are

proud of it and believe as we have achieved such prominence and success in the production of berry plants, that we have a right to speak of it in proper terms. And if this letter "B," which stands for "Baldwin," has caught your eye, may we ask that you give consideration to the further and more important fact that in the purchase of berry plants there is no place in this big land of ours where you can have your needs supplied more honestly, promptly and satisfactorily than right here. We have grown an immense stock of new ground plants—growing nothing but good varieties, all of which have proven their fruiting value here and elsewhere. We have tried to describe each variety carefully and not make any statements that might be misleading to you in any way. After you have bought from us we are just as anxious that you succeed and make money growing berries as we are to get your order. We urge, therefore, that you

Buy Berry Plants of Baldwin

We have never exploited plants under an assumed name to gain public favor, but have always produced the well known standard varieties, true-to-name, and sold them just that way. We have improved and developed certain varieties, made them yield better under our favorable soil conditions and Baldwin's method of production, but when we have done this, we have been satisfied. We are not boasting at the other man's expense. Our object of calling your attention to our name in this way is with this one fact in mind: Baldwin is best qualified to supply your needs in the berry plant line. May we ask that you read carefully the pages that follow, observe our methods of doing business and the advice we offer to fruit growers. We feel very keenly the necessity of emphasizing the difference between Baldwin's methods of berry plant production as against the ordinary method pursued by so many that have not the interest at stake and perhaps do not think as much of their good name as Baldwin does.

Baldwin's Business Builders

Treatment of Our Customers

We have made a lot of changes and improvements in our big plant business; but we have never wanted to change the policy of square dealing on which our business was established nearly thirty years ago. An honest, live-and-let-live policy through which we hope to hand down to our growing-up sons as untarnished a name and reputation as was handed down to us. We try to treat every order received from you through the mails just as we would treat you personally if you drove to our packing house for your plants. We treat all customers alike, the little orders having the same careful attention as the big ones. All orders are appreciated. None are neglected. This policy may be somewhat selfish on our part as we realize that our future success in the plant business depends entirely upon the success our customers have with our plants. Satisfied customers are what we want and we cannot afford to have any other kind. Your dealings with Baldwin will be both pleasant and profitable to you.

An Important Fact

There are far too many worthless varieties advertised in most plant catalogs, and it is not only very confusing to fruit growers, but as all varieties are generally described as the best, some are pretty sure to disappoint the purchaser. We call your special attention to the fact that Baldwin's list contains only about twenty varieties of strawberry plants—while some catalogs describe three or four times that number. We have grown and tested several hundred varieties of strawberries in the past ten years and have kept discarding worthless ones until our list this year covers only the proven varieties that pay to plant.

Same way with other fruit plants. Look over our list and you will see only the proven varieties of well known value.

When our customers get varieties that give profitable returns on their investment they will feel good toward us.

Quality and Service

Baldwin has tried to make it plain to you that our new ground berry plants are of extra quality. We grow them ourselves, and our customers have great success in producing paying crops of first-class fruit.

We grow nothing but plants, and we grow them by the million. We have our own packing houses, cellars, storage houses, offices and working force, equipped in splendid working order. We claim to grow, sell and ship more strawberry plants than any other nurseryman or nursery company in this country. We also ship millions of raspberry, blackberry, dewberry, currant, gooseberry and grape plants each year. Baldwin's big berry plant business makes it possible for Baldwin to serve you best.

No plants are allowed to fruit on our big plant farms, and what is more important—all plants are strictly fresh dug for each order. We put no plants in cellars for storage over winter or any other time. All plants are tied 25 in a bunch—40 bunches to the thousand, and there will be ten hundred or more good, strong, well rooted plants in every thousand you get.

Baldwin's Plant Business is not the growth of a day. It represents years of hard work and applied ability in the production of the best berry plants. We have been growing, digging and packing plants for nearly thirty years and have learned many important things that help us to get our stock to you in good growing condition.

Baldwin's New Ground Berry Plants are grown right, dug right, packed right, shipped right; in fact, we want to impress upon you that Baldwin quality and Baldwin service are the best.

It is greatly to your advantage to

BUY OF BALDWIN OF BRIDGMAN

BALDWIN HISTORY



Our First Packing House in 1889.

We started packing plants in a hen-house ten feet square in 1889, as shown at the top of page.

Five years later we built a packing house 16 by 20 feet. After another five years we doubled this room, making 16 by 40 feet, as reproduced from photograph in the center of this page.

We have since added to this until we now have over 5,000 square feet of floor space used entirely for storing and packing our plants, as reproduced from photograph at bottom of page.

These packing houses and storing cellars are equipped with freight elevators and all conveniences for handling our stock rapidly and in the best possible manner.

This insures good service for you and that means much when buying live plants.

Baldwin's new ground plants have made a name for themselves in nearly every fruit section and the demand for them has exceeded the supply for several years.

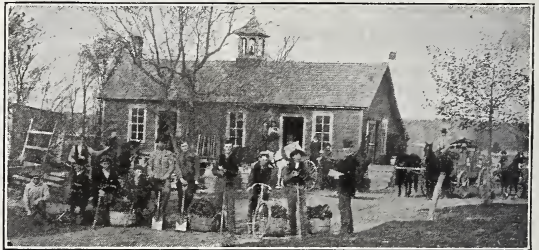
We invite you to become one of our regular satisfied customers and we honestly believe that our dealings will be mutually pleasant and profitable.

Our plant business has steadily grown from the beginning thirty years ago, until now we operate probably the largest fruit plant nursery in the United States.

Commencing on 20 acres of land with a little patch of red raspberries in 1889, the business has expanded until our plant farms now consist of over 600 acres, most of which is new ground and especially adapted to the growth of strong, heavy-rooted berry plants.

This year we are growing about 100 acres of strawberry plants, besides many acres of raspberry, blackberry plants, etc.

We honestly believe the one big reason for this rapid, healthy growth of our plant business is the fact that we always give our customers a little more in both quality and quantity than they expected to receive for the money sent us. We try to see each transaction from our customer's point of view as well as from our own—in short, we are doing business on the square.



Ten Years Later—Packing House, 1899.



Baldwin's Packing Houses, 1917 (packing 500,000 strawberry plants and 200,000 cane plants per day)

Instructions to Customers

When writing, please sign your name plainly. Be sure to give your postoffice, county and state.

Use order sheet and return envelope, fill out carefully, and much delay and trouble will be avoided. All orders are acknowledged immediately upon receipt.

Terms. Cash with order, or part cash, balance any time before shipment. We give references as to our reliability.

References. As to our reliability, we refer to the Bridgman State Bank of Bridgman, or the Commercial National Bank of St. Joseph, Mich. Also the Postmaster or Express Agent at Bridgman.

How to Send Money. By check, bank draft, express money order, postoffice order or registered letter.

Complaints, in regard to shortage or errors must be made within ten days after stock is received. If the fault is ours we will make things right at once and do it cheerfully. If stock should not prove true-to-name we will replace same free of charge, upon proper proof. We are not liable for more than cost of plants.

Claims to Express Company. If stock arrives in poor condition, you must have agent note same on express bill so claim can be made to Express Company.

Substitution. We do not substitute one variety for another without your permission unless order is filled late in season.

It often saves delay in filling orders if we substitute and we always use varieties of same season and value as those ordered. We guarantee you satisfaction on varieties substituted by us.

Order Early by all Means. The earlier the better. If anything more is needed it can be added later. If not prepared to send all the money, send a part when the order will be booked.

Methods of Shipment. Express is the safest, and all things considered, the cheapest way of shipping plants. We will ship all plants by express collect unless you instruct otherwise.

Freight. Very little stock is shipped by freight now as it is not very safe and difference in cost is small.

Parcel Post. We are now shipping a great many plants by Parcel Post and as our extra charge is small for extra wrapping and postage, and your plants are delivered at your door it is becoming popular. We can mail strawberry plants if 20 cents is added for each hundred plants for postage and wrapping.

Raspberry and blackberry plants mailed for 50 cents extra for each hundred plants, for extra wrapping and postage.

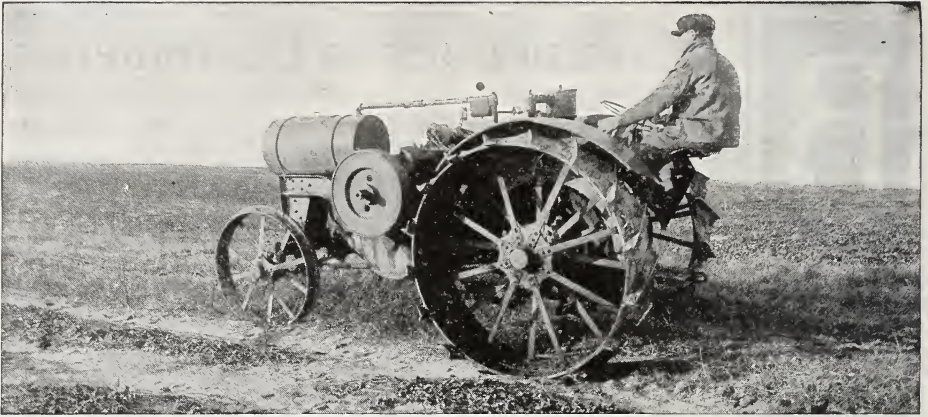
Grape, Gooseberry and Currant plants mailed for 80 cents per hundred extra.

On shipments west of Mississippi River, east of Allegheny Mountains, or south of Ohio River, double these amounts for mailing.

Packing. We make no charge for packing, which is done in the best possible manner. We use light plant crates and handled baskets for shipping strawberry plants, and boxes and barrels for other stock. We pack with damp moss and shingle tow. Each variety is carefully separated in package and correctly labeled with printed wooden labels.

Shipping Season. We commence to ship the last of March or first of April, according to season, and will continue till May 15th to 20th.

We issue no fall catalog, but send out some stock after October 1st. Plants are well rooted at that time and we will ship what orders we receive then, at prices quoted in this catalog.



This Big Tractor Helps Baldwin Grow More New Ground Plants.

Baldwin Equipment

To meet the demands of modern business, two decidedly important factors are necessary. We must have both manpower and motorpower. We have in our organization experienced men, competent to carry on the production of berry plants in the most modern and scientific manner—men who are trustworthy and dependable. To this great force we must add the other equally as important force, namely, motorpower.

On this page we illustrate the tractor and the truck we use. We have automobiles and other power machinery that add to the effectiveness of our organization.

The modern factory must have the latest devices and machinery to meet competition. It is by employing improved methods that we are able to produce in larger quantity and at prices as low or below the average. Farming today is a business—the biggest business on earth. Growing berry plants is a technical business. It requires skill, modern equipment, experience and business management.

Baldwin's Berry Plants are produced under these conditions. In short, we keep abreast with the times. We modernize our equipment not alone for purposes of economy, but for the purpose of producing better stock and handling it more rapidly and safely—Baldwin is fully equipped to take care of your plant order to your entire satisfaction.



Baldwin's Big Truck Loaded with New Ground Plants Packed Ready for Shipment.

Cultural Instructions

Soil. Almost any soil that will grow good field crops will grow good berries—good, rich, well-drained sandy loam preferred. Avoid low, frosty places if possible. Light sand or hillsides can be used to good advantage in growing berries of all kinds; land that cannot be used very well for corn, wheat, etc.

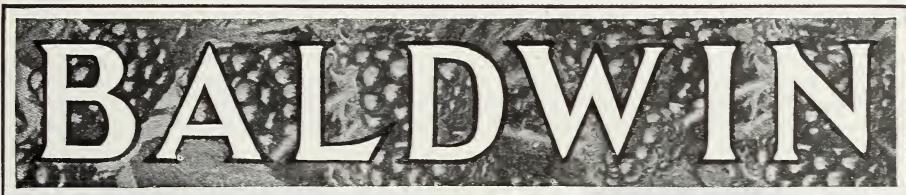
Drainage. Your berry patch should be well drained the same as your land for any other crop. Tiling of sufficient size to carry off all surplus water is best and saves ground for you.

Fertilizing. The best fertilizer we ever found for fruit is stable manure. A crop of clover or other green crop plowed under is good. Fruit plants, like any other crop, need rich ground, and respond quickly to good care and fertilization.

When to Plant. The earlier in the spring the better. As soon as you can prepare the ground so the spring rains will give the plants a good start. Plants should be handled and set before they start to grow very much, while the vitality is in the plant.

Preparing Ground. Soil for setting fruit plants should be plowed deep and harrowed till it is loose and level. We like fall plowing, as the ground gets settled during winter. Early spring plowing is all right, and the better you prepare your land the easier it will be to keep your berry patch free from weeds and keep the plants growing. We advise rolling or floating the land just before setting, and you can use a plank float (home made) with best of results. The soil should be firm. You can mark out your ground with any kind of marker you use for other rowed crops. We use a hand marker (home made) that marks three rows at one operation.

Care of Plants When Received. If the ground is not in condition when they arrive, a very easy method can be used to keep them, which will be a great benefit to the plants, as follows: Take each variety, a bunch at a time, cut strings, and spread roots very thinly along the side of a shallow furrow, then cover the roots with dirt not higher than the crown of the plants. If ground is dry, water roots only. In a few days they will have taken hold, or rather sent out little white fibrous roots, and will be in good condition for transplanting.



Planting—Distance Apart, Etc.

Strawberries. We recommend putting the rows three feet eight inches apart, same as for corn—and putting the plants from fourteen to twenty inches apart in the row. This requires on an average about seven thousand plants per acre. The distance apart in rows depends upon the variety set. For instance, Senator Dunlap, Haverland, etc., produce large quantities of runner plants, while Bubach, Glen Mary, etc., do not produce many plants, so the distance in rows can be regulated accordingly.

Setting the Plants. Make holes with a spade by putting in ground six or eight inches and pull toward you, then take out. If ground is in good condition and soil is damp, this should leave a "V" shaped opening. Hold plant in this hole with hand and close hole with foot and press firmly (with feet) on both sides of plant. If one is setting plants alone a row of holes may be made, then take plants and set that row. If two are working together one can make holes and the other set the plants. Great care should be taken to set the plant at the right depth. Plants should be set the same depth as they were before being dug, with the crown of plant even with surface of ground. This is important, as plants set too deep will be washed over with mud and those set too shallow will dry out.



A Strawberry Plant
Correctly Set.

Selection of Varieties for Fertilizing. Varieties marked (P) are "Pistillate," and should have about every third row set to some staminate variety for fertilizer. Set early staminates with early pistillates and late with late, etc.

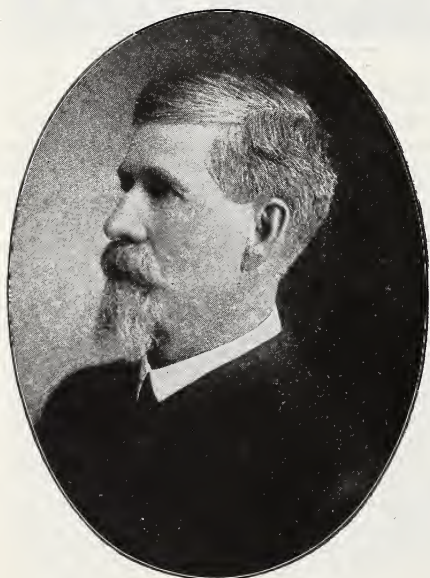
Varieties marked (S) are "Staminate," and self-fertilizers, needing no pistillate variety set with them for best results.



Our New Home and Office—Our Old Home and Office Was Destroyed by Fire March 5, 1917.

Picking Blossoms from New Set Plants. The standard or June bearing varieties are not expected to produce a crop the year they are planted, so the fruit stems should be pinched from all plants as they appear after setting. This throws the strength into the roots and develops a strong, healthy plant that will give you a big crop of nice berries the following season. If you do not want a wide matted row (and we would not recommend matted rows for best fruits), you should cut off all runners that start up till about July 1st. There will then be plenty coming on later and your parent plant will be strong and vigorous.

All blossoms should be picked from everbearing varieties the first part of the season if you want them to form a number of runners. The midseason bloom can be left and a crop matured the latter part of the same season in which they are planted. Everbearers will produce a good crop of berries during late summer and fall the year they are planted, but you must pick off fruit stems as they appear up till July 1st.



O. A. E. Baldwin,
Founder of the Business.



O. A. D. Baldwin,
Present Proprietor.

PROGRESSIVE

The Best of the Everbearing Strawberries

Big Ripe Berries from June till December

This wonderful strawberry has proven beyond all doubt that it is the leading everbearing variety. Progressive plants set in the spring not only produce an immense crop of fruit the year they are planted, but the runner plants bear fruit as soon as set. Progressive yields a crop of fruit the first year that is truly wonderful. The fruit of Progressive is of good size, smooth, of good color and appearance, a single plant often producing over one hundred perfect berries during the season.

From August 1st to November 1st, 1918, Progressive berries shipped from Bridgman sold on the wholesale market for from \$3.75 to \$8.00 per 16 quart crate. We do not mean a few crates, but thousands of crates of Progressive berries of extra quality were shipped from Bridgman this fall. They have proven a big commercial success, and certainly every family having a garden or farm should have fresh strawberries from May 30th to November 30th.

We advise ordering early, as the demand will again exceed the supply.

Heavy-rooted, new ground Progressive plants, guaranteed true to name, \$2.00 per hundred, \$15.00 per thousand.

Picking Progressive Strawberries on Baldwin's Plant Farms, from a photograph taken October 23rd. Please note that the Corn is in the shock and being husked and hauled while Progressive berries are being picked in large quantities. Guaranteed by Baldwin of Bridgman, Michigan.





DR. BURRILL

THE MILLION DOLLAR STRAWBERRY

Dr. Burrill is an improved Senator Dunlap, and was originated by Dr. Reasoner of Illinois, who originated the famous Senator Dunlap. It is a cross of Senator Dunlap and Crescent, both being wonderful producers. This new berry is the biggest cropper of all strawberries. Berries are very large and uniform in size and shape. Most of you know what Senator Dunlap is and what loads of nice berries they are producing everywhere. Dr. Burrill is a better berry in every way, produces more berries, bigger berries and berries of better quality. This is a big statement, but Dr. Burrill has proven its value on the grounds of the originator and on the farms of the introducers.

This great new variety is a strong fertilizer, and its season of blossoming and fruiting is extra long. It ripens in mid-season. Dr. Burrill stands the drought best of all varieties owing to its wonderful root system. Foliage is large, of a beautiful dark green and very hardy and healthy. With its extra long, strong roots, heavy crowns and healthy foliage, it is able to produce its wonderful crop of fruit every season. Berries are very dark red in color, and are of the very best quality.

DR. BURRILL, the "BOSS OF STRAWBERRIES." Every plant is guaranteed to be true to name and to be grown on Baldwin's new ground at Bridgman, Michigan. Price \$6.00 per thousand.

AT YOUR SERVICE

Mr. Stanard has been with us for the past 27 years and has had entire charge of our plant farms for many years.

He has spent all this time studying plant growth and the best methods of plant production. Naturally Mr. Stanard has learned many things about growing berry plants that are valuable to our customers as well as to ourselves.

In fact, by watching the different varieties year after year and studying the best way to grow the best plants Mr Stanard has had much to do with the wonderful growth of our plant business.

We invite all our customers, who can, to come and visit our plant farms. Mr. Stanard will be glad to show you what he can do of our methods of plant production and tell you how he takes new stump land and makes it produce our wonderful crops of new ground plants the first year. We want to impress upon you the fact that when you buy Baldwin's berry plants, you are buying quality and service that insure your success in the berry business.

Mr. Stanard's life time of practical experience in producing first-class berry plants is worth something to you.

The important fact that Baldwin's plants are grown right, kept strictly true to name, and developed to the highest degree of productiveness has been one of the big reasons why Baldwin's plants are now bought year after year by the most successful fruit growers throughout the United States.



Lewis Stanard
General Superintendent.



Oscar Seavers

This is the 22nd year that Mr. Seavers has had charge of our strawberry plant diggers. He has made a study of the best methods of handling strawberry plants from the field to the packing house, and he, with his assistant foremen, sees that there are twenty-six good strong plants put into every bunch and that they reach our packing houses in first-class condition.



George Hann.

This is Mr. Hann's 17th season as foreman of our cane plant packing cellars. He understands the handling of raspberry, blackberry plants, etc., thoroughly. Mr. Hann has several able assistants and sees to it that no stock goes out that is not in first-class condition and properly labeled and packed. We very seldom receive a complaint about stock not arriving in good shape.



Lee Ashcraft.

For 6 years Mr. Ashcraft has been packing Baldwin's strawberry plants and looking after our strawberry plant packing houses. He thoroughly understands the way to pack plants so they will reach our customers in best possible condition. Not too wet or too dry, too tight or too loose— but just right. Your strawberry plants will be packed carefully and well.

**WE ARE ALL PULLING TOGETHER. THAT'S WHY
BALDWIN'S PLANT BUSINESS IS GETTING SO BIG**



Our Big Stump Puller at Work. (Baldwin's plants are better, because grown on new ground.)

Cultivation. We recommend shallow cultivation as soon as the plants are set, or at least within a day or two. This levels the ground and holds the moisture. Shallow cultivation should be kept up through the growing season.

Care of Patch After Picking. Most of our customers, we think, will find it profitable to leave their strawberry patches for the second crop. A good way to care for a patch after the first crop is off is as follows: If field is weedy, mow it and rake it off. It will be necessary to commence cultivation at once, and if the matted row is too wide we take a furrow away from each side of the rows, making a "back furrow" or ridge in the middles. Commence cultivating at once, a double shovel cultivator being the best tool to level the ground. We sometimes drag our old patches with spring tooth drag instead of plowing between the rows. This will destroy some plants but will leave plenty and give them a chance to send out new runners.

Black Raspberries should be planted three and one-half feet apart in row, with rows seven feet apart, requiring about 1,725 plants per acre. We recommend setting Black Raspberries the same as strawberries, by making holes with a spade and following same method described for strawberries. Many, however, prefer to plow a straight furrow and set the plants against the land side and pulling dirt around the plant with hoe or hook, and pressing earth firmly (with feet) around the plant. Furrows can easily be filled by plowing the earth back into them.

Trimming. As soon as the canes reach a height of about 20 inches, the ends should be pinched or cut off. We use a heavy knife for this work. This causes the canes to throw out side branches, making a stronger bush for fruiting the following season. On old patches cut out all canes that have borne a crop after fruiting season and burn them. In spring as leaf buds are starting you should trim off all parts of cane damaged by winter, leaving all bushes from twenty to thirty inches high for fruiting. This applies to both old and new patches, and is all the trimming raspberries require. New plants are grown from tips only. Cultivate often.

Red Raspberries should be set about three feet apart in row, with rows six feet apart, requiring about 2,425 plants per acre. Either method of setting suggested for black raspberries is all right for red raspberries. Trim same as black raspberries, excepting that new canes do not need pinching off. New plants grow from roots only.

Blackberries should be set three and one-half feet apart in row, with rows seven feet apart, requiring about 1,725 plants per acre. Set and trim same as raspberries. Cultivate well. New plants grow from roots only.

Currants, Grapes, etc. We make a few suggestions with descriptions in catalog.

CERTIFICATE OF NURSERY INSPECTION.

No. 1927.

THIS IS TO CERTIFY, that I have examined the nursery stock of O. A. D. Baldwin, and find it apparently free from dangerous insects and dangerously contagious tree and plant diseases.

This certificate to be void after July 31, 1919.

L. R. TAFT,

State Inspector of Nurseries and Orchards.

Agricultural College, Mich., Oct. 1, 1918.



The above is a reproduction from a photograph of Baldwin's New Ground Strawberry Plants. Please note that they are a foot long. They are worth many times as much as some plants being sold.

This wonderful growth of roots is partly due to the fact we grow all our plants on rich new ground that produces extra long, strong roots, and partly due to the fact that we grow all plants for plants only, never letting anything fruit in our big plant fields.

There is a mighty big difference between our strong, heavily rooted berry plants that are grown for plants only and the ordinary plants that are produced as a by-product between fruiting rows. Perhaps you have never thought much about this important matter but we want to make it very plain to you that Baldwin's plants grown the Baldwin way are stronger in both root and crown. They will grow better for you and produce better crops of bigger berries than plants being sent out by many nurserymen and dealers who buy most of their plants from fruit growers.

Get started right by buying good, thrifty plants with a reputation behind them, and you will be surprised at the ease with which you can supply your table and with the finest fruit obtainable. We are satisfied that Baldwin's heavy rooted, new ground plants grown by Baldwin of Bridgman will please you in every way, grow and do well for you and bring you a big crop of berries of extra quality. Why not get started this year in a business that is pleasant and profitable?

<p>Buy the 4</p> <p>Big Money</p> <p>Makers</p>	<p>CHARLES I (Extra Early)</p>	<p>From very early till very late.</p> <p>—</p> <p>These four most popular varieties will bring you big money.</p>
	<p>DR. BURRILL (Medium Early)</p>	
	<p>GIBSON (Medium Late)</p>	
	<p>AROMA (Very Late)</p>	

Everbearing Strawberries

The Biggest and Quickest Money Makers.

Everbearing Strawberries are a success. It has been proven that strawberries can be grown, picked and sold, not only in June, but in July, August, September, October and November as well.



We do not mean a few berries for home use, but big crops of extra quality fruit for market. Over two thousand (2000) crates of Progressive Everbearing Strawberries were shipped from Bridgman alone this fall during Aug., Sept. and Oct., selling at from \$2.50 to \$6.50 per 16 qt. crate on the wholesale commission market in Chicago.

Think of the big profits to be made where these berries, ripening in September, October, and November, are sold to retail stores or on home markets.

Our new ground everbearers produce wonderful crops the same season they are planted, bringing you quick returns.

✓ **PROGRESSIVE.** (See complete description and illustration in natural colors opposite page 8.) The best and most profitable everbearing strawberry producing a full crop during Aug., Sept. and Oct., the same season as set in April. Don't wait to order as the demand for plants will exceed the supply again this year. **Price, \$2.00 per hundred; \$15.00 per thousand.**

From a photograph made on Baldwin's New Ground October 23rd, picking Progressive Everbearing Berries,



Progressive Everbearing Strawberries Picked on Baldwin's New Ground October 23rd.
(Note the large, uniform shape and size of berries.)

General List of Strawberries

(For price by the hundred, etc., see page 30)



Extra Early Varieties

✓ **CHARLES I (S).** Our new extra early berry. See illustration and complete description on inside of back cover.

This variety will bring you big profits on account of its being extra early and extra size and quality. Buy some Charles I plants this year and we will guarantee you entire satisfaction. We have grown an extra large stock of this variety and hope to be able to fill all orders. They produce a big crop of large berries of good quality, and the size holds up well all through their fruiting season.

We are the introducers of this wonderfully profitable new early strawberry and we guarantee them to make you money. Take our word for it and include Charles I in your order. Price, \$6.00 per thousand.

✓ **BEDER WOOD (S).** We have fruited this variety for many years and found it to be a very heavy bearer, of good sized, roundish fruit. Berries are rather light in color but as they ripen early and mature a big crop, they are very profitable.

Beder Wood is a healthy grower and deep rooted, withstanding dry weather extra well. Price, \$5.00 per thousand.



This photograph shows the remarkable growth of plants on Baldwin's New Ground Plant Farms.

Medium Early Varieties

DR. BURRILL (S). The new million dollar strawberry. (See further description and illustration in colors opposite page 9.) This new berry is the biggest cropper of all strawberries. Berries are very large and uniform in size and shape. Most of you know what Senator Dunlap is. Dr. Burrill is a better berry in every way, produces more berries, bigger berries and berries of better quality. Foliage is large, of a beautiful dark green and very hardy and healthy. With its extra long, strong roots, heavy crowns and healthy foliage, it is able to produce its wonderful crop of fruit every season. Berries are very dark red in color, extra solid and are of the very best quality for canning and home use, as well as one of our best shippers. We have grown a splendid stock of Dr. Burrill plants on new ground and plants are extra large and well rooted. We recommend this wonderful variety to all for big profits. The demand for Dr. Burrill plants will probably far exceed the supply the same as in the past and we advise ordering them early. Don't fail to include Dr. Burrill in your order this year, as they will bring you paying crops of large, extra quality berries. On account of their high color and fine appearance the fruit of Dr. Burrill sells at top prices on all markets. **Price, \$6.00 per thousand.**

HAVERLAND (P.) Exceedingly productive; fruit large and very fine; one of the most popular and well tested varieties; withstands drouth better than most kinds; color light. Demand for plants has always been much larger than the supply. You will not miss it in buying some Haverland. They are a good sure berry. Bought largely for main crop all over the country. They make a good sized fruiting row and mature an immense amount of fruit which is very easy to pick, being plainly in sight. Haverland will bring you a paying crop, as it is one of our best and most profitable commercial berries. The berries are large and long, making a very attractive package when put in crates for market. We guarantee satisfaction with Haverland. This variety is not self-fertilizing and requires a staminate or self-fertilizer planted with them. We recommend Dr. Burrill or Senator Dunlap. You can alternate the rows or plant two or three rows of Haverland then one row of other variety. You will find Haverland a money maker. **Price, \$5.00 per thousand.**



Senator Dunlap.

SENATOR DUNLAP (S). This is the leading strawberry throughout the United States, and the demand for this variety has steadily increased every year since its introduction. It does very well everywhere and produces enormous crops of fine fruit regularly. Senator Dunlap is of the Warfield type, has a perfect blossom, is hardy, productive, a splendid keeper and seems able to produce a good crop under any circumstances. Senator Dunlap is a very heavy bearer of good size, evenly shaped fruit of a very beautiful dark red color, and its flavor is delicious. For canning it is fine, making a rich, red syrup. It is a first class shipper and retains its brightness long after being picked. It always looks well on the market and sells quickly at top prices. The best proof we have that this berry is a big money maker is the fact our customers in nearly every state in the Union are ordering Senator Dunlap in large quantities every year, often planting several acres solid to this variety. We guarantee Sen. Dunlap to please you in every way and make you a good big profit on your investment. **Price, \$5.00 per thousand.**

Medium Late Varieties

GIBSON (S). A wonderful new strawberry. (See picture from photograph, in natural colors, on inside of front cover). Gibson, we believe, is the most profitable variety of strawberries grown. That is a very strong statement, but we have often told our customers that if we were growing strawberries for market and were restricted to one variety, we would choose Gibson.

Gibson commences to bear with Senator Dunlap, etc., but owing to its wonderful productiveness it continues until quite late, so we class it with our medium late varieties. It is a very strong grower, with long roots that withstand dry weather.

Productiveness—The vines are simply loaded with berries. You will hardly understand how the plants can produce such quantities of fruit.

Size—Berry is extra large. One of our very largest strawberries.

Color—A beautiful dark, glossy-red. The flesh of the berry is red clear through. Calyx is bright green, adding greatly to its beauty and market value.

Quality—The flavor is as fine as can be found in any strawberry; a perfect table and canning berry, and owing to its tough skin it is a very fine shipper.

Shape—Nearly round and regular. A berry which sells itself on any market.

We have again grown a nice stock of extra strong Gibson plants and we hope every one of our customers will include some plants of this profitable variety in their order this year. **Price of Gibson, \$5.50 per thousand.**

GLEN MARY (S). Large and choice, very handsome, and of fine flavor; vigorous and productive. A real money maker everywhere. We believe one can pick as many quarts of good berries from Glen Mary as from any other variety, and they sell quickly at a good figure. The demand is very heavy for this extra profitable berry every year and we guarantee entire satisfaction. Glen Mary is an extra strong grower and while not a large plant maker it grows a good fruiting row and can be depended upon to bring a good crop of extra large, fancy berries every season. **\$7.00 per thousand.**



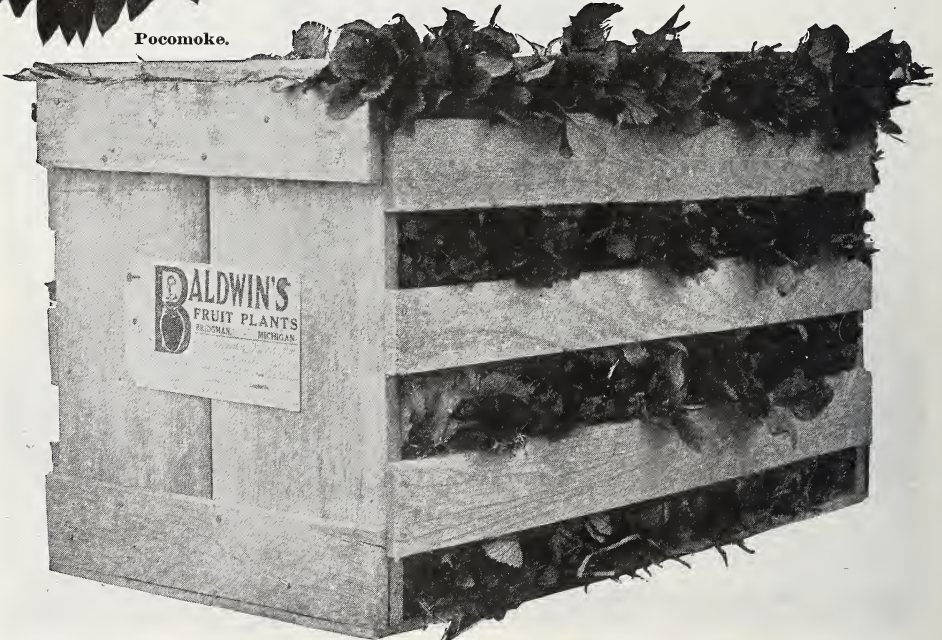
Glen Mary—We Guarantee This Variety to Please You.



Pocomoke.

POCOMOKE (S). This variety is one of our best and most profitable strawberries. Profitable not only for its enormous productiveness, but for its beauty, adaptability to all soils, its foliage enduring the dry, hot weather, its large size and deep color, firmness and high flavor. A strong, robust grower, with deep roots and lots of them. It ripens evenly, and is one of the best shippers yet introduced. We guarantee entire satisfaction with Pocomoke. Very nearly like Gibson and some growers call them the same variety. **Price, \$5.50 per thousand.**

CORSICAN (S). This variety is in the heavy weight class. Not only are the berries large, but they are uniform in shape. The color is bright red. They are very firm and will sell for a fancy price in any market. The foliage is exceedingly vigorous and leathery, resisting fungus and drouth. It is both profitable and a pleasure to grow a fancy berry, like the Corsican and we recommend them to all customers as a large, attractive berry that will command fancy prices on the market. One of the most beautiful and profitable of strawberries. Buy Corsican this year. **Price, \$7.00 per thousand.**



Baldwin's New Ground Plants, Fresh Dug and Packed for Shipment.

BUBACH (P). This has been a very popular berry for years. We have always considered Bubach one of our most profitable strawberries. This is a great, big, beautiful berry that always sells at top prices. The plant is very large and fine looking, but a slow plant maker; the berry large and showy. If you have a nearby fancy market, it will pay you to get a large, fine looking berry. Bubach will please you and make you handsome profits. This variety is not so good for distant market as berries are inclined to be a little soft for long shipment. Bubach is a big showy berry, non-fertilizing, so requires a staminate variety set with it. Plant Gibson, Uncle Jim or Corsican with Bubach and we will guarantee the fruit will please you. **Price, \$7.00 per thousand.**



Bubach.

UNCLE JIM (S). (Sometimes called Dornan). Plants are large and free from rust. Berry is large, regular form, and season is medium late. Uncle Jim is a comparatively new introduction, but it is one of our most profitable berries. We recommend Uncle Jim for profit. Goes nicely with Bubach. We have grown a good stock of extra heavy plants of this variety. **Price, \$7.00 per thousand.**

We recommend Uncle Jim for profit. Goes nicely with Bubach. We have grown a good stock of extra heavy plants of this variety.

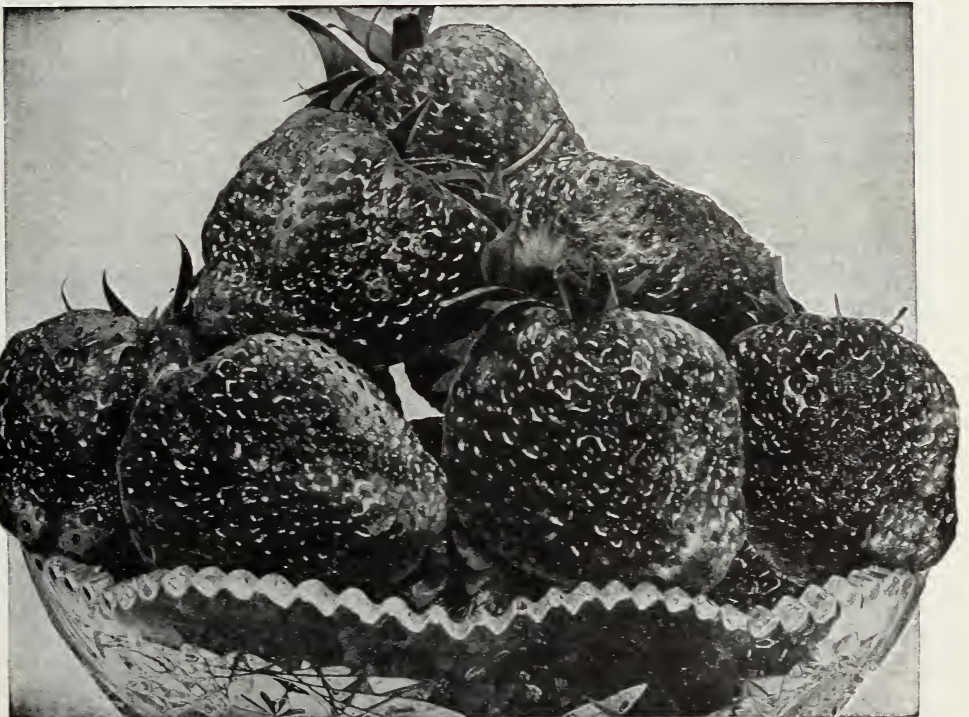
BEST ROOTS HE EVER SAW—EVERY PLANT GROWING.

Mr. O. A. D. Baldwin,
Bridgman, Michigan.

Floyd Knobs, Indiana, April 26, 1918.

Dear Sir:—Received the strawberry plants about two weeks ago. They had the best roots of any plants I ever saw. I have not seen a plant that is not growing.

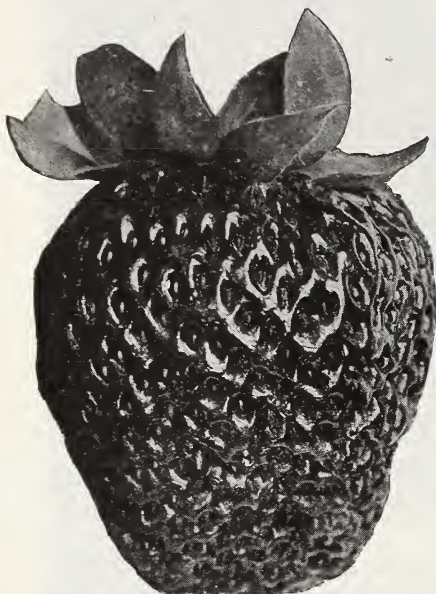
J. W. MOORE.



Uncle Jim—The Finest Table Berry Grown.

Very Late Varieties

AROMA (S). This is our best and most profitable late strawberry. Aroma, we think, is grown all over the country as the finest and most profitable of the very late varieties of strawberries. We will guarantee the fruit of Aroma to please all who give it a fair trial. It cannot well be beaten for quantity of fruit produced or in quality of fruit. Plants show no weakness of any kind. Fruit very large, roundish, conical, rarely misshapen, glossy red, of excellent quality and produced in abundance.



Aroma.

The demand for Aroma plants has exceeded the supply every year for the past ten years. We have grown an extra large stock of fine Aroma plants but we advise you to place your order early. They are fancy for market and bring top prices everywhere. We guarantee Aroma to bring you big profits. Price, \$6.00 per thousand.

GANDY (S). This is one of the leading late varieties with fruit growers all over the country. The plant is a strong grower, the fruit is large and firm; requires strong soil and fertilizers to do its best. It is very late, and a big, showy berry. Gandy is always quoted at the highest price in every market. It is the finest looking fruit and sells quickly at top prices.

We have sold out of Gandy before our shipping season was over for the past seven or eight years. The demand is extra heavy, especially from the Southern and Southwestern states, where fancy late strawberries bring big prices and Gandy is, of course, very profitable. Price, \$6.00 per thousand.

STEVENS' LATE (S). This valuable variety makes strong, vigorous plants which yield heavy crops of fruit. The fruit is large, long, a little flattened, and sometimes slightly creased, but generally smooth. The color is bright red, and the flesh is also red, but lighter. It has a firm surface protected by prominent seeds. It is one of the best to keep after being picked, and is good for canning. Stevens' Late is one of our most profitable strawberries and we recommend them highly. Price, \$5.50 per 1,000.

BIG NET PROFITS FROM BALDWIN PLANTS.

Mr. O. A. D. Baldwin,
Bridgman, Mich.

Waverly, Illinois, August 14th, 1918.

Dear Sir:—Enclosed please find two pictures of my Gibson strawberry patch, grown from your heavy rooted new ground plants and taken in blooming time, 1918. These plants were bought of you in the spring of 1916, so this is my second crop from them.

From our little patch, about 150 feet square, we cleared from all expenses \$449.00, not counting what my family had and canned, and we used them freely. Some heavy rains at blooming time cut our crop nearly in half, but notwithstanding that they certainly have brought us a lot of money for the amount invested.

Thanking you for all favors, I am,

Very truly yours,
W. E. MILLER.



SHOWING SIZE AND QUALITY OF FRUIT FROM BALDWIN PLANTS.

St. Joseph, Mo., August 31st, 1918.

Mr. O. A. D. Baldwin, Bridgman, Michigan.

Dear Sir:—No, these are not potatoes; just a case of Baldwin Aromas.

I take pleasure in sending you this picture of a case of Baldwin Aromas grown by me. I have decided that the Aroma and Sample are by far the best berries for my soil. No trouble to sell these berries as they are large and about the finest that come to this market, also the Houghton Gooseberries and the St. Regis Reds have done just fine.

Respectfully,

H. H. HARNER.

LIKES BALDWIN'S SQUARE WAY OF DOING BUSINESS.

Ft. Scott, Kans., Apr. 20th, 1918.

Mr. O. A. D. Baldwin, Bridgman, Mich.

Dear Sir:—Received your card that you had shipped fifty additional plants to make up for those I received in poor condition, and will say that you people are considerably more than fair in your method of doing business. I did not expect anything of the kind as the fault was not entirely yours. The others that were all right are just doing fine. They are certainly fine plants and I can recommend you people and your goods to my friends.

I thank you for your excellent treatment.

Very cordially yours, LESLIE CHAMPION.

MASSES OF FIBROUS ROOTS ON OUR NEW GROUND PLANTS

Lake Forest, Ill., Apr. 19th, 1918.

O. A. D. Baldwin, Bridgman, Mich.

Dear Sir:—The strawberry plants arrived in excellent shape, they were fresh and very hardy looking.

I was agreeably surprised at the very heavy masses of fibrous roots. Such plants cannot help but thrive and produce an excellent crop.

You are to be congratulated on the Baldwin system of growing which produces such fine plants.

Yours truly,

NELSON W. LEE.



BRANDYWINE (S). A valuable late strawberry especially adapted to home use and canning owing to its very dark red color and fine flavor. Brandywine is late, good shape, good quality, good size, firm, productive. A very good shipper, fine appearance, making an extra good market variety.

Brandywine is a good, sure berry for market as it is a nice looking berry of extra rich color. It is probably the best strawberry grown for canning, etc. We guarantee Brandywine to please you and bring you good big profits. Try this extra nice home use and canning variety this year sure. Price, \$6.00 per thousand.

SAMPLE (P). This late berry is very profitable and seems to do well everywhere. It produces a very heavy crop of extra fine, showy berries. Berry is of large size and fine quality, continues a long time in fruit; the berries are large to the last. It will yield as many berries as the Haverland, and will average as large as the Bubach. Colors all over at once. Foliage perfect, fruit perfect. Price, \$6.00 per thousand.



Sample (½ natural size).

Red Raspberries

(For price by the hundred, etc., see page 30).

Victory—Our Wonderful New Raspberry



VICTORY.

From photograph of a pint of berries. Please note that the berries are nearly one inch in diameter.

Extremely Hardy. A temperature of 30° below zero last winter not damaging a cane. Late frosts are frequent in Northern Michigan, all red raspberry blossoms were frozen one season. The Victory produced a second crop of blossoms and a full crop of fruit while two standard varieties on same farm were a complete failure.

Size. (See reproduction of photograph above). Berries nearly one inch in diameter—larger than a thimble.

Color. Beautiful bright red. They all look alike and hold their color after picking.

Quality. By far the finest tasting raspberry. If you do not say Victory is the best flavored red raspberry you ever ate, just tell us and we will refund your money.

Growth. The plants make a wonderful growth and their heavy root system enables them to go through a hot, dry summer and still produce a great crop of fruit.

Productiveness. The originator has a record of picking nineteen (19) pints of fancy berries from one bush of Victory during one fruiting season. Just think of it—nineteen pints from one plant, with positively no extra care or fertilization.

Price for Fruit. Victory brought \$6.00 per 24-pint crate when common varieties were selling at from \$2.50 to \$3.50 per 24-pint crate.

Victory is a seedling of the Cuthbert, one of our best old raspberries and resembles that grand variety. Victory has produced regularly for several seasons nearly twice as much fruit as Cuthbert, bush for bush, and acre for acre, grown in the same field, under exactly the same conditions. Victory berries are very much larger than Cuthbert and of better quality and flavor. Ripens a week ahead and continues to fruit two weeks later than Cuthbert.

BUY VICTORY NOW. Price, 20c each; \$1.00 for 6; \$1.75 for 12; \$3.00 for 25; \$10.00 per hundred.

In trying to select a suitable name for this valuable Red Raspberry we were undecided until the 11th day of November. As soon as the news of our great victory in France was announced we called our new variety the **Victory**.

In introducing this splendid new berry we believe we are achieving a great victory in the Red Raspberry business.

The writer saw Victory in full fruit on the farm of its originator, and it was a sight to see the great loads of fruit. The berries were about twice as large as any red raspberries I had ever seen before.

This seems like a big statement but I could hardly believe what I actually saw, as the soil where these berries were growing was not rich; in fact, it was real light sand.

We are introducing this valuable new Red Raspberry and are the only ones offering Victory plants for sale.

Owing to our small stock of plants we must limit each purchaser to 100 plants. **Don't forget—100 Victory plants is all you can buy, and as soon as plants are sold we must return all orders, so DON'T DELAY. SEND IN YOUR ORDER NOW.**



King.

KING. This is a wonderful early red raspberry. We believe you can make money faster with a good patch of King than with any other variety of fruit, if you have a good market for fancy, early red raspberries. The berries are very large, bright red, firm, easily picked. Cane is perfectly hardy, and a strong grower. We guarantee King to please you. They are easy to pick, and you get your money before the big shipments of raspberries get on the markets.

King is the earliest and most beautiful red raspberry we have ever grown and always brings top prices. Include King in your order for spring planting this year sure.

Fruit growers near Bridgman made a net profit of from \$250.00 to \$400.00 per acre this year on their King raspberries. In doing this they shipped to wholesale commission market or sold to canning factories so no fancy market was supplied at extra prices. You can make big profits with King red raspberries. **Price, \$10.00 per thousand.**

MILLER. Shipping qualities are perfect, makes a healthy growth of canes. Probably the strongest point in favor of the Miller is its splendid keeping qualities. They will hang on the bushes several days without becoming soft. This quality makes them very profitable to the grower. Miller is early to mid-season and a good producer. **Price, \$15.00 per thousand.**

ST. REGIS (Everbearing). (See illustration in colors and description with same on colored insert opposite page 24). This new red raspberry will give you a good crop of fine fruit from June until the berries freeze in the fall or early winter. Introduced as the most wonderful of all red raspberries. Fruit commences to ripen with the earliest and continuing on young canes until October.

Berries bright crimson, large size, rich, sugary, with full raspberry flavor. Flesh firm and meaty, a good shipper. Canes stocky, of strong growth, with abundance of dark green leathery foliage.

St. Regis is a heavy bearer in the regular red raspberry season, being very profitable then. In fact, St. Regis is proving one of our most profitable early red raspberries, outside of being a producer of nice berries all through the late summer and fall.

Strong, well rooted, genuine St. Regis. **Price, \$20.00 per thousand.**

THOMPSON'S EARLY. A very early and prolific red raspberry. It is hardy and as it comes early, Thompson's Early is grown with profit in some sections. **Price, \$10.00 per thousand.**

Buy Victory Raspberry Plants

(See opposite page)

Take our word for it—invest \$10.00 in Victory plants now. The biggest and most profitable Red Raspberry. Don't delay as our stock is limited.



Cuthbert.

CUTHBERT. For big profits plant red raspberries, and remember that Cuthbert is the most profitable red raspberry now generally grown. Cuthbert is the leading late market variety all over the country; strong grower, very productive, fruit firm, large size, of best quality; season medium to late. Cuthbert is perfectly hardy, always yielding immense crops in the most northern states. There is not a fault to be found with the Cuthbert. If you want an all around red raspberry, plant Cuthbert. Cuthbert produces a good big crop of extra nice large berries of fine quality every year and the fact that it is far more extensively grown than all other varieties proves its popularity and money making qualities. Cuthbert will please you and we advise our customers to plant them for profit. Price, \$12.00 per thousand.

LIKES BALDWIN'S NEW GROUND RASPBERRY PLANTS.

Lanark, Ill., R. F. D. 3, May 1, 1918.

Dear Sir:—I received the Raspberry plants you sent me in fine condition, for which please accept my thanks. If I am ever in need of any more plants, I will certainly patronize you.

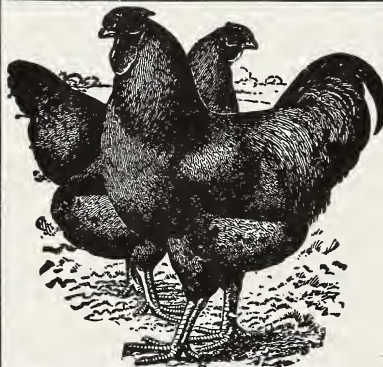
Yours truly,
PORTER WHITMER.

AS FINE PLANTS AS HE EVER SAW.
Afton Iowa.

Dear Sir:—I just finished setting out a fine strawberry patch with plants ordered from you. They arrived in the best of condition and were as fine plants as I ever saw.

Sincerely yours,
J. E. HOLLOWAY,

Director Union County Fram Bureau.



Rose Comb Rhode Island Reds Buff Wyandottes

THE BEST WINTER LAYERS FOR
FARMER OR FANCIER.

Red Eggs \$2.00 per 15.
Wyandotte Eggs \$2.00 per 15.

Special price on incubator lots.

FLEMISH BEAUTY RABBITS

The biggest, best and most hardy rabbits grown. Get started in this food-producing, money-making business now.

Quick Money—Big Profits.

Write for Prices.

LEWIS STANARD, Bridgman, Mich.

Mr Stanard is perfectly reliable and will do exactly as he agrees and advertises to do.—O. A. D. BALDWIN.



Cumberland—The Most Profitable Black Raspberry Grown.

Black Raspberries

(For price by the hundred, etc., see page 30).

✓ **CUMBERLAND.** The "Business Black Cap." Biggest black raspberry grown. This black raspberry is offered with the full assurance that it is the most profitable and desirable market variety yet known, because of its immense size, firmness and great productiveness.

Cumberland is very hardy, having withstood a temperature of 16 degrees below zero without injury. Extra productive, being the heaviest bearing variety now in cultivation. Fruit is jet black and extra fine quality. We recommend Cumberland for profit. Ripens mid-season. This is the standard raspberry and the sale of Cumberland exceeds all others. Price, \$12.00 per thousand.

✓ **HOOSIER—"The Dollar a Gallon Berry."** This valuable black raspberry is certainly a money maker. This new variety is, without exception, the finest thing we ever saw in the black raspberry line. We know Hoosier will please you and make you big profits. The plants are hardy, do not winter-kill, and will mature a full crop even to the tip of the canes. Canes are strong growing and are proof against anthracnose and other raspberry pests.

Hoosier ripens with Cumberland, mid-season. A very profitable black raspberry. Price, \$12.00 per thousand.

✓ **GREGG.** Fruit very fine and covered with bloom. Gregg has been the leading market variety all over the country, best for evaporating of any variety and it is said to give more pounds to the bushel than any other kind. A good all around late black cap. Very well and favorably known in every fruit district. Gregg is by far the best late black cap grown today. Price, \$15.00 per thousand.

✓ **EUREKA.** This is a very valuable extra early black cap, as it produces a heavy crop of large berries and ripens them early while they are selling at a fancy price. A fine black cap in every particular. If this profitable early black raspberry was better known it would be more generally planted. Eureka is a wonderful producer of extra large berries of good quality and they ripen very early when black raspberries are bringing big prices. Price, \$15.00 per thousand.

✓ **KANSAS.** This variety is now a general favorite all over the country. Ripens early, jet black, firm, handsome and of the best quality; a strong grower, holds its foliage until frosts; stands drought and cold. It is about as large as Gregg, early and very productive. Strong, healthy canes, making plenty of strong tips, and is a money maker everywhere. Price, \$12.00 per thousand.



Plum Farmer.

PLUM FARMER. A wonderful new black raspberry that has already become one of the leading and most profitable varieties.

We guarantee Plum Farmer to bring you a paying crop of extra fine fruit. The plants are very healthy, have a silvery bluish appearance when ripened in the fall and succeed where others fail. The fruit is grayish black, very firm, a good shipper, attractive, of the very highest flavor and is adapted for evaporating, as well as for fresh market or home use.

Plum Farmer is extra early and always brings the highest prices.

Price, \$12.00 per thousand.

SCARFF. This is the second time we have listed this highly advertised black raspberry. The Scarff was introduced a few years ago by W. N. Scarff of Ohio, who says it outyields all other black raspberries in his locality. We have not fruited Scarff but we have entire confidence in the introducer and we recommend this new variety to our customers. Described as follows: It compares with the Cumberland, possibly a little larger.

In productiveness it is far ahead of any blackcap we grow. It is absolutely hardy. Canes free from disease and strong upright growers. The canes are cleaner by far than any Raspberry we have seen and we think it will stand heat and drought better. Price, \$15.00 per thousand.

Get Started with Victory Raspberries

See Page 20 for Description.

In introducing this wonderfully profitable new Red Raspberry this year we must limit each customer to 100 plants. Even then we will be sold out long before our season is over and must return orders.

So don't put it off—send in your order now.

SEE WHAT COMMISSION MERCHANTS SAY ABOUT VICTORY BERRIES ON THE MARKET

South Water St., Chicago, Ill., Dec. 18th, 1917.

Mr. Al. J. Hartung,

Dear Sir:—Referring to our conversation, I am enclosing herewith duplicate sale of the case of fancy Victory Raspberries referred to.

This case only contained eight pints and sold for \$2.00, while other raspberries from your section sold the same day from \$2.00 to \$2.25 per crate of 24. This case of berries that I received from you were the best that I have ever seen, and I surely would like to have you ship me every case of them that you grow in the future, as I am always able to get a premium for a grade of berries such as yours were.

Now bear in mind that I want all your shipments of these raspberries every season and greatly obliged.

Yours very truly,

GEO. E. FORD.

BOUGHT PLANTS OF MY FATHER MANY YEARS AGO—STILL OUR CUSTOMER

Monroe City, Mo., April 24th, 1918.

O. A. D. Baldwin, Bridgman, Mich.

Dear Sir:—The two hundred Progressive plants received, and many thanks for same.

I must say you "take the cake" for square dealing. I thought, perhaps, you might send me 25 plants to make out my 200, but did not think of such handsome treatment as this.

I have bought a good many plants of your father and always received good plants and a "square deal."

Sincerely yours,

J. A. BIXLER.



*Ripe
Red
Raspberries*

*from July
till December*

St. Regis

Everbearing Raspberries

This wonderful variety is a proven success and will produce quantities of beautiful, bright red berries continually from July 1st till frost comes in the late fall.

Berries bright crimson, large size, rich, sugary, with full raspberry flavor. Flesh firm and meaty, a good shipper. Canes stocky, of strong growth, with abundance of dark green leathery foliage.

St. Regis is a heavy bearer in the regular red raspberry season, being very profitable then. In fact, St. Regis is proving one of our most profitable early red raspberries, outside of being a producer of nice berries all through the late summer and fall.

We have grown a big stock of genuine St. Regis everbearing raspberry plants, but the demand will far exceed the supply again this year. Order early to be sure of getting these plants. Genuine St. Regis Everbearing plants, \$2.50 per hundred; \$20.00 per thousand.

**Baldwin's Guarantee Goes with Every Plant.
We Grow Them for Plants Only.**



COLUMBIAN

The Great Pie and Canning Raspberry

Do You Grow Purple Raspberries?

They are by far the finest berry grown for home-use. Delicious for canning and for pies. Columbian is the best of the purple raspberries. Not only are purple raspberries extra good for table berries, but they are a very profitable commercial variety. Columbian plants are very hardy and propagate from tips. Fruit very large, often an inch in diameter, dark reddish purple; adheres firmly to stem; seeds small and deeply imbedded in a rich, juicy pulp with a distinct flavor of its own.

Every year the demand for purple raspberries has exceeded the supply and the late orders have to be turned back unfilled. We advise ordering early. No fruit farm or garden is complete without purple raspberries.

Price of Columbian, \$2.50 per hundred; \$20.00 per thousand.

**BALDWIN IS NOT SATISFIED
UNTIL YOU ARE SATISFIED**

BUY OF
ALDWIN 'OF
RIDGMAN

Purple Raspberries

Set same distance apart as black raspberries and cultivate in same manner.

(For price by the hundred, etc., see page 30.)

COLUMBIAN. (See illustration in natural color and description opposite this page). The Columbian is a variety of remarkable vigor and productiveness.

Purple raspberries are being grown in large quantities in many sections and there is always a big demand for these extra quality berries at a high price. There is nothing finer grown in the line of fruit for table use, canning, pies, etc., etc. If you have no purple raspberries on your place, do not fail to order a few hundred Columbian for your own table use, and do not forget that they are one of the most profitable fruits grown for the market. This year we are growing over twenty acres of Columbian, but all our plants will be sold long before our shipping season is over. We are sure of this from past experiences and we urge you to send your order for Columbian now. Price, \$20.00 per thousand.

SAYS COLUMBIAN PURPLE ARE FINEST BERRIES GROWN.

O. A. D. Baldwin.

Bridgman, Michigan.

Anderson, Ind., Sept. 30, 1918.

Dear Sir:—The Columbian Purple Raspberries are sure the finest berries grown. I ordered some of you two years ago and they are simply fine.

Respectfully yours, D. W. LEATHERMAN.

Why Baldwin Plants Are Better

See Reproduction Below of Photograph of Our New Ground Plants.

Please note that the plants are over 20 inches long, with a mass of fiber roots well over a foot in length. This wonderful development of our plants is partly due to

the fact that they are grown on new ground, and partly because we grow them for plants only. We do not allow our big raspberry or blackberry patches to produce any fruit. All canes are cut away in the spring and we grow new canes only, using all the vitality of the mother plants for producing young plants. This is very important, not only because it produces better plants but also because it destroys all old growth of canes and brush each spring, keeping our patches free from insects, and plant diseases. Insects breed and diseases develop largely in the old canes and we do not give them any chance on our farms. We claim our plants are larger and stronger in both cane and root than the plants sent out by most nurserymen who grow plants as a by-product between fruiting rows.

It naturally and certainly follows that Baldwin plants grown the Baldwin way will produce more and better berries than ordinary plants.

Our business is to grow first-class plants. We have no by-products. We believe our methods of growing plants are right and we guarantee our plants to please you and bring you big paying crops.



Baldwin's New Ground Raspberry Plants, Showing Tape Line.



Blackberries

(For price by the hundred, etc., see page 30).

✓ **ELDORADO.** We place this variety ahead of all others without a moment's hesitation. It is the greatest blackberry in general cultivation today. Eldorado is as hardy as the Snyder, twice as large and of better quality. When you get one like that you have a berry that cannot well be beaten. Eldorado has never been known to winter-kill, even in northern Michigan and Wisconsin. For home and market use, we recommend Eldorado above all others. We consider it the best blackberry ever fruited in every way, and we have grown them all. The fruit is good size, firm and of the very highest quality. Very profitable, as it needs no protection in winter. We guarantee Eldorado to please you in every way and to make you big money. Our plants are extra well rooted and are of good size. **Price, \$18.00 per thousand.**

✓ **WILSON'S EARLY.** One of the largest and most productive of the early sorts; produces fruit in large clusters, sweet as soon as black, holds its color well after picking. Wilson's Early is not hardy here in the Northern States, needing protection to go through our winters. It is an extra good shipper but not being hardy most of our fruit growers are planting Eldorado, which withstands our most severe winters without protection. **Price of Wilson's Early, \$15.00 per thousand.**

Eldorado
Two-thirds
Natural Size.

Asparagus

No garden is complete without Asparagus. Our stock of Asparagus Roots were grown on contract for us by one of our neighbors who has good land especially adapted to this purpose. We will guarantee entire satisfaction with our plants.

Set asparagus plants four to six inches deep, and about 12 inches apart in the row, covering with only three inches of soil at first, and filling in the trenches as the plants grow. About September 1st the tops should be cut, and the bed cleared of weeds. When this work is finished, cover the bed to a depth of three inches with coarse manure for a mulch. Very early in the spring, rake off all coarse straw and loosen the soil, being careful not to injure the crowns of plants.

PALMETTO. A valuable new variety of extra quality and very productive. Very large, tender stalks and hardy. **Price, 40c per 25; \$1.25 per 100; \$7.00 per 1,000.**



Palmetto Asparagus.

Currants

(For price by dozen, etc., see page 30.)

Set Currants four feet apart in row, with rows six feet apart.

All should grow enough Currants for home use, as they are best fruit for jellies, jam, etc.

The new canes do not bear till the second and third years, so do not trim out the old ones till the third year at least. If the currant worm appears, dust with hellebore.

Our currant plants are first class in every way. They have good, strong canes and are heavy rooted. They will produce a nice lot of fruit the second season.



✓ **LONDON MARKET (Red).** This is the best red currant we have ever fruited and we guarantee them to please you in every way. A fine new variety, a strong grower, large fruit and very productive, holds its foliage late and is not liable to attack of worms and borers.

Plant is extremely vigorous, with perfect foliage, which it retains throughout the season. London Market will, we believe outyield all other varieties of red currants and is therefore very profitable as a market variety. Price, \$6.00 per hundred.

✓ **PERFECTION (Red).** This truly wonderful new currant has both large size and extra good quality. Perfectly healthy, a vigorous grower and, in fact, an extra fine red currant in every way. Widely advertised all over the country. Price of Perfection, \$10.00 per hundred.

✓ **RED CROSS (Red).** An extra large red currant of the very highest quality. This variety is one of the leading currants. A very strong grower of healthy canes and a heavy producer. Price, \$7.00 per hundred.

✓ **LEE'S PROLIFIC (Black).** This is the leading variety of the black currant. Very heavy bearer of large bunches of fruit. Extra quality. Valuable for home use. Black currants are used extensively for jams and jellies and are extra fine for these uses. We have grown a nice lot of Lee's Prolific by far the best black currant grown and we know they will please you. Price, \$6.00 per hundred.

✓ **WHITE GRAPE (White).** Very large, yellowish white, sweet or very mild acid; excellent quality and valuable for the table. The finest of the white sorts. Price, \$7.00 per hundred.



Just a few plants will grow enough of this fine fruit for your jellies, jams, and table use.



Gooseberries

(For price by dozen, etc., see page 30.)

Set gooseberry plants four feet apart in row, with rows five feet apart. Cultivation should be given until the plants are well established, usually about the third year; after this they may be permanently mulched, if desired. As the best fruit is borne on the two and three year old wood, a certain amount of pruning will be necessary to encourage a strong growth of canes, and in the removal of the older wood after bearing. There is big money in growing gooseberries.

✓ **DOWNING.** Downing is a yellowish green sort, and of good size, being a strong growing bush and a very prolific bearer. This is the most popular variety of gooseberry. Downing is extra large and of strictly first-class quality. Price, \$10.00 per hundred.

✓ **HOUGHTON.** An enormously productive and always reliable old sort; of vigorous, yet rather slender spreading growth, not subject to mildew. Fruit of medium size, smooth, pale red, tender and good. Houghton is a very profitable gooseberry, as the fruit hangs so thick on the branches that it can easily be stripped off by wearing leather gloves. In this way they can be picked very rapidly. The best and cheapest way to remove the leaves, etc., is to put them through an ordinary fanning mill. Houghton is very profitable. Try them this year. Price, \$8.00 per hundred.

Grape Vines

(For price by dozen, etc., see page 30.)

Plant grape vines for field culture eight by twelve feet, requiring about 435 plants per acre. Grape vines will grow and do well on light sand or clay where it is hard to raise a crop of grain or other fruit.

✓ **WORDEN (Black).** In brief, an improved Concord, being larger in both bunch and berry, handsomer, nearly two weeks earlier and of better quality. Worden will not yield like Concord and so are not planted so extensively for market. They are an extra good grape for home use. Price, \$6.50 per hundred.

✓ **CONCORD (Black).** This is the grape so largely planted all over the country for commercial purposes. Concord is the main variety of grape for profit and is sold in large quantities. A large, purplish black grape, ripening about the middle of September; vines remarkably vigorous and free from disease; the standard for productiveness and hardiness all over the country. Price, \$5.00 per hundred.

BALDWIN QUALITY AND SERVICE WORTH MORE
Costs You Nothing Extra



Concord.

MOORE'S EARLY (Black). Bunch large, berry round, color black, with a heavy blue bloom; quality better than the Concord. Moore's Early is hardy and free from disease. You can get Moore's Early off a few days ahead of the main market varieties and get from three to five cents per basket more for your crop. **Price, \$6.50 per hundred.**

CAMPBELL'S EARLY (Black). A wonderful new grape of excellent quality and great productiveness. As a good keeper and shipper it is believed to be unequaled by any other grape. Vines are hardy. Campbell's Early is an early grape but can be left on the vines two weeks if necessary, and the quality of the fruit increases all the time. It is both as to cluster and berry, of large size, of glossy black color, with a beautiful blue bloom, pulp sweet and juicy, free from foxiness, seeds small, few in number, and parts readily from the pulp. **Price, \$10.00 per hundred.**

DELAWARE (Red). Bunch small, compact, sometimes shouldered, berries small, but firm; flesh juicy, very sweet and refreshing, of best quality for table and wine; ripens with Concord or a little before; vine hardy. Delaware is extra fine for eating fresh or for home use. A pale red grape. **Price, \$8.00 per hundred.**

NIAGARA (White). This is the leading white grape throughout the country. Fruit is large and of fine quality. We recommend Niagara very highly for home use. Bunch and berries large, greenish white, changing to pale yellow when fully ripe; skin thin but tough. **Price, \$6.50 per hundred.**



Moore's Early.

Baldwin's Special Grape Offer

We will send by mail, postpaid, 12 grape vines, **TWO VINES OF EACH VARIETY MENTIONED ABOVE**, for only \$1.50; 12 grapes, enough for an arbor, all colors. Red, White, and Blue.

Baldwin's Plant Prices, 1919

50 at hundred; 500 at thousand rates.

Strawberries

	Per 25	Per 100	Per 250	Per 1000
Aroma (S)	\$0.35	\$1.00	\$2.00	\$6.00
Brandywine (S)	.35	1.00	2.00	6.00
Beder Wood (S)	.35	1.00	1.75	5.00
Bubach (P)	.40	1.25	2.50	7.00
Charles I (S)	.35	1.00	2.00	6.00
Dr. Burrill (S)	.35	1.00	2.00	6.00
Corsican (S)	.40	1.25	2.50	7.00
Gandy (S)	.35	1.00	2.00	6.00
Glen Mary (S)	.40	1.25	2.50	7.00
Gibson (S)	.35	1.00	1.75	5.50
Haverland (P)	.35	1.00	1.75	5.00
Pocomoke (S)	.35	1.00	1.75	5.50
Sample (P)	.35	1.00	2.00	6.00
Stevens' Late (S)	.35	1.00	1.75	5.50
Senator Dunlap (S)	.35	1.00	1.75	5.00
Uncle Jim (S)	.40	1.25	2.50	7.00
Progressive (S) Everbearing	.80	2.00	4.50	15.00

Raspberries

	Per 25	Per 100	Per 250	Per 1000
Cuthbert (Red)	\$0.60	\$1.75	\$3.50	\$12.00
King (Red)	.50	1.50	3.00	10.00
Miller (Red)	.70	2.00	4.50	15.00
Thompson's Early (Red)	.50	1.50	3.00	10.00
St. Regis (Everbearing)	.80	2.50	6.00	20.00
Victory (New Red)	3.00	10.00	(See page 20)	
Cumberland (Black)	.60	1.75	3.50	12.00
Hoosier (Black)	.60	1.75	3.50	12.00
Gregg (Black)	.70	2.00	4.50	15.00
Eureka (Black)	.70	2.00	4.50	15.00
Kansas (Black)	.60	1.75	3.50	12.00
Plum Farmer (Black)	.60	1.75	3.50	12.00
Scarff (Black)	.70	2.00	4.50	15.00
Columbian (Purple)	.80	2.50	6.00	20.00

Blackberries

	Per 25	Per 100	Per 250	Per 1000
Eldorado	\$0.75	\$2.25	\$5.00	\$18.00
Wilson's Early	.70	2.00	4.50	15.00

CURRENTS

	Per 12	Per 100
London Market (Red)	\$1.25	\$6.00
Perfection (Red)	2.00	10.00
Red Cross	1.50	7.00
Lee's Prolific (Black)	1.25	6.00
White Grape (White)	1.50	7.00

(25 or more at hundred rates.)

GOOSEBERRIES

	Per 12	Per 100
Downing	\$2.00	\$10.00
Houghton	1.50	8.00

(25 or more at hundred rates.)

GRAPES

	Per 12	Per 100
Concord (Black)	\$1.00	\$5.00
Worden (Black)	1.25	6.50
Moore's Early (Black)	1.25	6.50
Campbell's Early (Black)	2.00	10.00
Niagara (White)	1.25	6.50
Delaware (Red)	1.50	8.00

(25 or more at hundred rates.)

ASPARAGUS

	Per 25	Per 100	Per 1000
Palmetto	\$0.50	\$1.25	\$7.00

EXTRA FOR MAIL SHIPMENT

For mailing Strawberry plants add 20c per hundred; Raspberry and Blackberry, 50c per hundred; and other stock, 80c per hundred for extra wrapping and postage. On shipments west of Mississippi River, east of Allegheny Mountains, and south of Ohio River, double these amounts.

DON'T DELAY Fill out Order Sheet opposite this page—
NOW! Let us reserve your Plants.

Berries are bringing high prices, making berry growers very big profits—From \$250.00 to \$600.00 per acre, net.

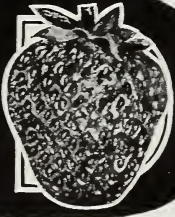
The demand for plants will be greater than ever this year. Baldwin's plants always sell. Buy yours NOW and play safe.

O. A. D. Baldwin, Bridgman, Mich

BALDWIN'S

ORDER SHEET

Bridgman - - Michigan



Amt. Enclosed \$..... Date.....

Name Rural Route No.....

Post Office Express Co.....

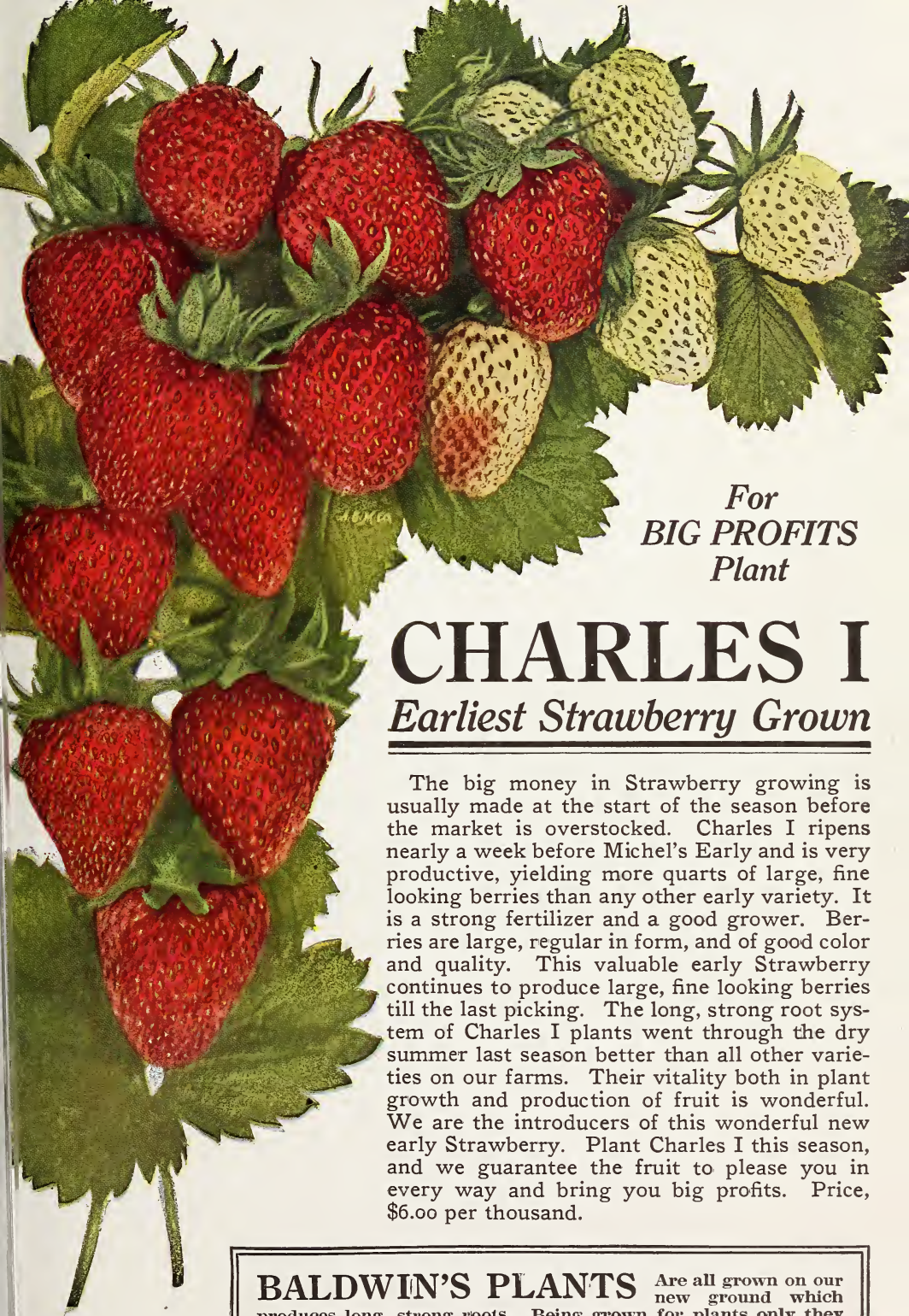
County Ship by.....
(How to ship)

State Ship about.....
(When to ship)

Express Office

Freight Sta.

No. of Plants.	Variety.	Price.
.....
.....
.....
.....
.....
.....
.....
.....
.....
.....
.....
.....
.....
.....
.....



*For
BIG PROFITS
Plant*

CHARLES I

Earliest Strawberry Grown

The big money in Strawberry growing is usually made at the start of the season before the market is overstocked. Charles I ripens nearly a week before Michel's Early and is very productive, yielding more quarts of large, fine looking berries than any other early variety. It is a strong fertilizer and a good grower. Berries are large, regular in form, and of good color and quality. This valuable early Strawberry continues to produce large, fine looking berries till the last picking. The long, strong root system of Charles I plants went through the dry summer last season better than all other varieties on our farms. Their vitality both in plant growth and production of fruit is wonderful. We are the introducers of this wonderful new early Strawberry. Plant Charles I this season, and we guarantee the fruit to please you in every way and bring you big profits. Price, \$6.00 per thousand.

BALDWIN'S PLANTS Are all grown on our new ground which produces long, strong roots. Being grown for plants only they are better. Let us prove it to you this year.



BALDWIN

Grows plants for plants only. Six
hundred acres

OF

Michigan's best fruit plant land.
Thirty years of square dealing at

BRIDGMAN

