

72,93

LIBRARY
RECEIVED
★ SEP 5 1929 ★
Department of Agriculture

Bolgiano's

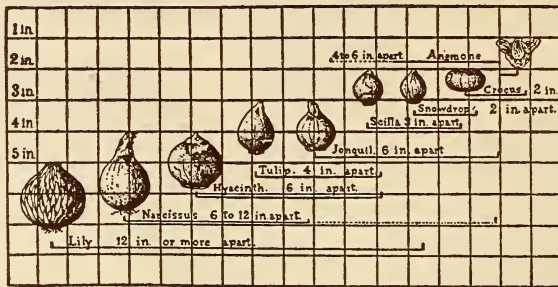
Bulbs-Plants-Seeds
for Fall Planting
1929



EASTER
1930
COMES
APRIL 20

F. W. Bolgiano & Co.
607 E Street Northwest
Washington, D. C.

BOLGIANO'S FALL BULBS



HOW TO PLANT

OUTDOOR CULTURE—Plant the bulbs as soon after September as possible to enable the roots to make good growth before the cold weather sets in. They can, however, be planted from September until the ground becomes frozen. They require a moderately rich soil, or else apply Bolgiano's Sheep Manure or Bone Meal. How far apart and how deep to plant the different bulbs is shown in the accompanying chart. When the ground freezes cover with 3 or 4 inches of leaves or dry litter. Rake off after frost.

INDOOR CULTURE—Plant hyacinths, tulips and narcissus in a sandy soil. Give a good soaking after planting and water once or twice a week during the time the bulb makes root. After planting keep in a dark place in the house and keep a paper bag over the pot until the sprout is about three inches long. They may then be brought to the light and bag removed.

GROWING PAPER WHITE NARCISSUS IN WATER—Place a dozen bulbs in a shallow bowl, cover with small stones and keep filled with water. Place a few small pieces of charcoal in the bottom of the bowl to keep the water from fouling. Keep in a moderately temperate room. They require no care, no attention. They keep on growing and produce a beautiful flowering plant in about six weeks.

HOW TO ORDER

NAME AND ADDRESS should be written plainly both on the Order Blank and on the envelope enclosing the order. Names of seeds and bulbs should be written out in full in plain writing.

OUR TERMS are always cash with order. **MONEY** can be sent at our risk by Post Office or Express Money Order, New York or Chicago Draft, or by registered letter. We cannot hold ourselves responsible for cash sent loose in letters.

POSTAGE AND EXPRESS CHARGES.—ALL BULBS will be sent by Mail, charges prepaid, when ordered at single or dozen rates. At 100 rates and over add 5 per cent to the cost of the bulbs to cover carrying charges. Packets, Ounces, Quarter-Pounds or Pounds, ordered at list prices, will be sent FREE by mail or express. This DOES NOT APPLY to Beans, Corn, Peas, Field and Grass Seeds and Seed Potatoes, which will be sent at regular Parcel Post or Express Rates. Orders for greater than one pound lots will also be delivered at regular parcel post or express rates.

GIVE FULL DIRECTIONS always, whether shipment is made by freight, express or Parcel Post.

EXPRESS OR FREIGHT shipments should have the name of the station plainly given where different from the post office.

WE GUARANTEE our seeds and bulbs to reach our customer in good condition. We give no warranty, expressed or implied, as to description, purity or productiveness, or any other matter of any seeds, plants or bulbs we send out, and will not be in any way responsible for the crop. If purchaser does not accept the goods on these terms they are to be returned at once, and the money that has been paid for same will be refunded.

Capitol Park Lawn Grass Seed

Never Fails to Give Satisfaction



**Remember! Fall, Not Spring Is the Best Time to Seed Your Lawn.
Seed from August 1 to October 10**

BOLGIANO'S "CAPITOL PARK" LAWN GRASS SEED

Has Greatly Helped to Make Washington the City Beautiful. Used in Seeding Many of the Handsome Lawns Surrounding the Government Buildings. It Never Fails to Give Satisfaction.

BOLGIANO'S "CAPITOL PARK" LAWN GRASS SEED, from yearly comparative trials, has proven to be unsurpassed for first-class and permanent results. This is due to the fact that we use only the very finest varieties of the most suitable grasses, thoroughly re-cleaned, free from all chaff and weed seeds.

BOLGIANO'S "CAPITOL PARK" LAWN GRASS SEED contains a well-balanced blend of various American and foreign fine bladed and deeply rooting grasses which has proved to produce the very best results under the varied conditions as to soil and climate met with in America.

BOLGIANO'S "CAPITOL PARK" LAWN GRASS SEED will give a green, smooth, velvety sod with a thick bottom and free from such varieties of common grasses as produce clumps and knots on the lawn, which so frequently spoil the desired smooth and deep effect.

Pkt., 10c; lb., 40c; 10 lbs., \$3.50; 25 lbs., \$8.25; 100 lbs., \$30.00.

BOLGIANO'S "SHADY NOOK" LAWN GRASS SEED

The Grass That Will Grow in Shady Places

It will quickly produce an abundant and even growth of beautiful green grass. The grasses used in making this special mixture are only those that are well adapted for growing in shade and as it blends well with our Capitol Park Lawn Grass Seed it may be used on those portions of the lawn which are shaded by trees, buildings, etc., thus covering the whole area with a beautiful carpet of green.

Pkt., 10c; lb., 45c; 10 lbs., \$4.00; 25 lbs., \$9.25; 100 lbs., \$35.00.

Write for Our Free Booklet "How to Make and Maintain a Lawn"

Bolgiano's Specially Selected Single Dutch Hyacinths

READY FOR DELIVERY IN SEPTEMBER

We have condensed our list to only the very best of each particular shade or color. The varieties we list produce the largest and finest trusses of bloom and should always be selected for specimens in pots, for fiber culture and for garden bedding when the largest and most perfect flowers are desired.

6 of One Variety Sold at the Dozen Rate, 25 at the 100 Rate

SINGLE PURE WHITE

L'Innocence. The very best white. White as the driven snow. Extra fine truss with very large bells. A wonderful variety for bedding and forcing. Always produces good flowers.

SINGLE RED, ROSE AND PINK

Gertrude. Deep carmine rose. A very large, well-filled truss of a fine color. Excellent for forcing and bedding.

Gigantia. Fine blush pink. Large compact flowers. Fine for forcing and bedding.

La Victorie. Brilliant carmine red; one of the very finest red varieties for bedding and forcing. It retains its superb color to the end.

SINGLE DARK AND LIGHT BLUE

Grand Maitre. Beautiful porcelain blue, gigantic truss filled with fine bells. Extra strong stem. One of the finest of the lighter blue hyacinths for all purposes.

Johan. Light blue; very large spike; strong bells of great substance. Excellent for bedding.

King of the Blues. Deep, glossy blue, splendid well formed large spike, on short stem. Bells of medium size but of great substance.

SINGLE YELLOW

Yellow Hammer. Compact spike of a lovely creamy yellow. Excellent for pot culture.



Single Early Hyacinth—L'Innocence

First Size Bulbs, 20c each; \$2.35 dozen; \$18.00 per 100

Second Size Bulbs, 18c each; \$1.95 dozen; \$15.00 per 100

Bolgiano's First Size Double Hyacinths

Ready for Delivery in September

6 Sold at the Dozen Rate

25 at the 100 Rate

BOUQUET ROYAL. Pure White, large spike.

BOUQUET ROYAL ROSE. Salmon Rose, red center.

BOUQUET TENDRE. Brilliant Dark Carmine Red, good truss.

GENERAL KOHLER. Bright Blue, large spike.

LA GRANDESSE. Pure White, waxy well formed bells.

PRINCE OF ORANGE. Dark Rose, large truss.

PRINCE OF WATERLOO. Pure White, large bells, slightly rosy center.

18c each, \$2.00 dozen,

\$15.00 per 100



Single Hyacinths

MIXED HYACINTHS

Single Bedding Varieties
White, Red, Yellow, Pink, Blue

Double Bedding Varieties
White, Red, Blue, Pink

15c each, \$1.50 dozen; \$11.00 per 100

BOLGIANO'S ESPECIALLY PREPARED BULB FIBRE is composed of disintegrated Holland Peat, fertilized and blended with pulverized charcoal and crushed oyster shells. It furnishes in an assimilable form all the plant food elements needed by bulbs. It does not dry out as quickly as soil nor will it get water-logged nor sour if too much water be given, and it does not harbor insects or worms. Lb. 15c; 2 lbs. 25c.

CROCUS

Ready for Delivery Late in September

The earliest of flowers to show its head among the grass almost before the snow is gone, this little gem has endeared itself to all those who look to nature for signs of returning spring.



EXTRA LARGE SIZE

	Each.	Doz.	100.
White ...	\$0.04	\$0.35	\$2.25
Blue04	.35	2.25
Yellow ..	.05	.45	3.25
Striped .	.04	.35	2.25

We Pay Postage on All Bulbs at the Each and Doz. Rate. At 100 Rate Add 5 Per Cent to the Cost of the Bulbs for Carrying Charges

Ready for
Delivery
in September

Bolgiano's Extra Selected Single Early Tulips

6 Sold at
Doz. Rate
25 at 100 Rate



Single Early Tulip—Keizerkroon

It would be impossible to conceive of anything more brilliant and attractive than a bed of beautiful tulips. The single early varieties give us bright flowers in the early Spring and are followed by the gorgeous Darwins and Breeder Tulips, giving us a continuous display from April until late May.

	Each.	Doz.	100.
ARTUS. Dark scarlet, large elegant flower, splendid for bedding....	\$0.05	\$0.45	\$3.75
CHRYSOLORA. Pure yellow, large flower. The best for bedding on account of its long keeping qualities.....	.07	.80	5.75
COTTAGE MAID. White; edged with rose; extra fine; lovely; splendid for bedding07	.75	5.50
COULEUR CARDINAL. Rich glittering cardinal red.....	.07	.80	5.75
CRAMOISE BRILLIANT. Rich glowing scarlet with yellow base....	.05	.50	4.00
DUCHESSE DE PARMA. Brownish red with large light orange yellow border08	.90	6.00
FRED MOORE. Brilliant apricot orange shaded scarlet.....	.07	.75	5.50
KEIZERKROON. Bright red with broad golden yellow border, extra large flower on tall strong stem, fine for forcing, very effective for bedding08	.90	6.75
LA REINE (Queen Victoria). White, sometimes showing a rose tint....	.06	.60	4.00
POTTEBAKKER SCARLET. Bright scarlet, large flowers.....	.07	.75	5.50
ROSE GRIS-DE-LIN. Delicate rose, shading to white at base.....	.05	.50	4.00
ROSE HAWK or FLAMINGO. Rich brilliant pink on a white ground	.07	.80	5.50
ROSE LUISANTE. Dark silky rose pink.....	.07	.80	5.75
YELLOW PRINCE. Bright yellow, the best yellow for forcing on account of its earliness in growing, its fine shaped flower on strong erect stem and its very sweet scent.....	.07	.75	5.50

MIXED SINGLE TULIPS

	Each.	Doz.	100.
Red, Pink, Yellow, White.....	\$0.05	\$0.45	\$3.25

We Pay Postage on All Bulbs at the Each and Doz. Rate. At 100 Rate Add 5 Per Cent to the Cost of the Bulbs for Carrying Charges

Bolgiano's Extra Selected Double Early Tulips

Ready for
Delivery
in September

6 Sold at Dozen Rate
25 at 100 Rate

Many prefer these to the Single varieties because they remain in bloom longer. Their large, double peony-like flowers produce a gorgeous display in the early Spring.



Double Early Tulip—Rose Blanche

	Each.	Doz.	100.
IMPERATOR RUBRORUM. Fine bright scarlet; large flower, extra for forcing and bedding.....	\$0.08	\$0.85	\$6.50
MR. VAN DER HOFF. Pure golden yellow, large flower, good forcer.....	.08	.85	6.50
PEACH BLOSSOM. Deep rosy-pink deepening with age to a deep rose. A very fine flower with a wonderful color. A new variety of superb quality which we are glad to recommend.....	.08	.85	6.50
ROSE BLANCHE. Pure white, splendid for bedding	.05	.55	4.00
TITIAN. Red with yellow border, good for forcing and for bedding. Strong, erect stem.....	.06	.65	5.00
MIXED. Red, Pink, Yellow, White.....	.05	.50	3.75

OLD DUTCH or BREEDER TULIPS

This fine old May Flowering type is exceedingly popular. They are very similar to the Darwins in their tall strong growth but with even larger flowers. They bloom about the same time as the Darwins, but have an entirely different range of colors, comprising Bronze, Terra-cotta, Orange, Brown and other artistic tones.

	Each.	Doz.	100.
BRONZE QUEEN. Buff, tinged bronze.....	\$0.05	\$0.50	\$4.00
DON PEDRO. Coffee color.....	.10	1.00	8.00
LOUIS XIV. Rich dark purple, with a broad margin of golden bronze.....	.10	1.00	8.00
MADRAS. Dark bronzy yellow edge.....	.07	.75	5.50
PANORAMA. Reddish mahogany, very large forcer....	.07	.70	5.00
SANS-PAREILLE. Dark violet, extra fine.....	.07	.75	5.50
YELLOW PERFECTION. Olive yellow color.....	.07	.70	5.00
BREEDER TULIPS MIXED05	.50	4.00

Bolgiano's Giant Darwin Tulips



Darwin Tulip

6 Sold at Doz. Rate

25 at 100 Rate

Ready for
Delivery in
September

The gorgeous Darwin Tulips are of comparative recent introduction. Their majestic flowers on tall stems 20 to 26 inches high, are beautiful beyond description. To know them is to love them. Darwins bloom in late May and early June. We have selected the best varieties.

	Each	Doz.	100
AFTERGLOW. Rosy Orange, salmon-tinted margins.....	\$0.08	\$0.85	\$6.50
BARTIGON. Carmine Red05	.50	4.00
CLARA BUTT. Bright Salmon Rose, lovely color and shape.....	.05	.45	3.75
DREAM. Soft rosy mauve on heliotrope ground.....	.07	.70	5.00
FARNCOMBE SANDERS. Brilliant Rose Scarlet05	.50	4.00
FAUST. Dark Satiny Purple with Blue Base, very large and well formed.....	.07	.80	5.50
FLAMINGO. An even tone of Pale Shell Pink.....	.07	.70	5.00
GRETCHEN (Margaret). Soft Flesh Rose, beautiful shape.....	.05	.50	4.00
MAD. KRELAGE. Bright Rose, light border, large flower.....	.05	.50	4.00
PRIDE OF HAARLEM. Brilliant Carmine Rose, very large.....	.05	.50	4.00
REV. H. EWBANK. Soft Lavender Violet05	.50	4.00
YELLOW DARWIN. Rich Yellow globular flowers05	.50	4.00
ZULU. Rich Velvety Purple Black, very fine distinct shape.....	.05	.50	4.00
DARWIN TULIPS. Bolgiano's Superior Mixture05	.45	3.25

PARROT TULIPS

The petals are curiously fringed or lacinated on the edges and the form of the flowers, especially before they open, resembles the head and neck of a parrot.

	Each	Doz.	100
ADMIRAL CONSTANTINOPLE. Red Tipped Orange	\$0.08	\$0.85	\$6.00
CAFE BRUN. Brown08	.85	6.00
CRAMOISIE BRILLIANT. Scarlet08	.85	6.00
MARKGRAAF VAN BADEN. Yellow08	.85	6.00
PARROT TULIPS. Mixed07	.75	5.50

LILY FLOWERING TULIPS

We have here a new, very beautiful and distinct race of tulips. Graceful, slightly reflexing flowers on tall, sturdy stems.

	Each	Doz.	100
SIRENE. Satin Rose. Forces easily; medium early	\$0.06	\$0.65	\$5.00
ARTEMIS. Bright Carmine Rose, pure white base06	.65	5.00
NEPHISTO. A magnificent Glowing Red. One of the best show tulips to date; a real novelty18	1.00	14.50
ECLIPSE. Orange06	.65	5.00
ELLEN WILMOT. Soft Creamy Yellow05	.55	4.00

We Pay Postage on All Bulbs at the Each and Doz. Rate. At the 100 Rate Add 5 Per Cent to the Cost of the Bulbs for Carrying Charges

Narcissus or Daffodils



Single Large Trumpet Varieties (Daffodils)

There is no hardy bulbous plant which has more points of merit than the Narcissus. Perfectly hardy, growing and doing well in almost any and every position, sun or shade, moist or dry. They are equally suited to pot culture for Winter flowering.

BICOLOR VICTORIA. Petals creamy white, trumpet rich yellow, unsurpassed for forcing. First Size Double Nose Bulbs.

EMPEROR. This grand variety is one of the finest daffodils in cultivation. Pure yellow trumpet of immense size and wide overlapping, rich primrose perianth. First Size Double Nose Bulbs.

GOLDEN SPUR. The most popular of the golden-yellow trumpets with cut flower growers as it produces freely and early its handsome rich, deep yellow flowers. First Size Double Nose Bulbs.

VON SION. Double. A famous old variety just recently grown successfully in America. Large double golden yellow flowers.

SIR WATKINS (Incomparabilis). Petals primrose yellow; trumpet yellow, tinted deep yellow. A large flower of great substance.

15c Each; \$1.50 Dozen; \$12.00 Per 100

MIXED. All sorts large trumpet mixed. 10c each; \$1.00 doz.; \$7.00 per 100.

MEDIUM AND SMALL TRUMPET VARIETIES

Each. Doz. 100.

POETICUS ORNATUS. Pheasant's Eye. Pure white petals, cup yellow with red. First Size Double Nose Bulbs	\$0.10	\$0.90	\$6.00
POETAZ, LAURENS KOSTER. Pure white flowers with orange cups borne in clusters.....	.12	1.35	10.00

JONQUILS

CAMPERNELLE REGULOSUS. Rich yellow sweet scented10	1.10	8.00
---	-----	------	------

We Pay Postage on All Bulbs at the Each and Doz. Rate. At the 100 Rate Add 5 Per Cent to the Cost of the Bulbs for Carrying Charges

Narcissus Paper White Grandiflora



Paper White Narcissus

NARCISSUS PAPER WHITE GRANDIFLORA MONSTER BULBS, 10c each; \$1.00 doz.; \$7.50 per 100.

PEBBLES FOR PLANTING PAPER WHITE BULBS, Qt. 10c; 4 Qts. 35c.

FREESIA

One of the most charming bulbs known for Winter-flowering and cut flowers. They grow well and bloom freely in an ordinary sitting room, if placed near a window and not kept too warm. They need not be kept in the dark as other bulbs. Plant 4 to 6 bulbs in a 5-inch pot, in light, rich soil.

Freesias, Rainbow Mixture. Cluster of yellow, blue, violet, mauve, pink, and lavender blooms borne on graceful stems. The fragrance alone will repay you. Bulbs, 10c each, 70c doz, \$5.00 per 100.



Freesias

CHARMING FRAGRANT BEAUTIFUL

Their charming, fragrant, beautiful white flowers fill your home with delicious perfume at Fall, Winter and Spring.

**Make a Handsome
Decoration for
Your Thanksgiving
and Christmas
Table**

EVERYBODY CAN RAISE THEM

Plant a dozen Bulbs in a shallow bowl, cover with small stones and fill with water. Be sure to place in the dark for 2 weeks to develop the roots and then keep in a moderately temperate room. They require no care, no attention. They will keep on growing and produce a beautiful flowering plant.

Grand Soliel D'Or. A beautiful variety bearing clusters of golden yellow flowers with orange cups; 20c each; \$2.00 doz.

Lilies—Other Spring Flowering Bulbs



LILIUM CANDIDUM (Annunciation or Madonna Lily). Many people do not know how easily they may grow these wonderful flowers in their own gardens. From twenty to thirty large snow-white bells are borne each season on their long stems giving forth a delightful fragrance during May and June. Plant as early as possible in the fall, covering with not more than 2 inches of dirt. Dust bulbs lightly with sulphur before planting to insure best results. Prices, 25c each; \$2.50 doz. Powdered sulphur, 10c per lb.

LILY OF THE VALLEY. This shade loving perennial needs no description. Large field grown clumps for outdoor planting only. Roots, 10c each, \$1.00 per dozen.

WHITE CALLA LILY (Lily of the Nile). Pure white blooms of an attractive, unusual form and one of our best window plants. Pot bulbs in 6 to 8-inch pots as soon as received. Give an abundance of water, light, and heat and the results will be very satisfactory. 25c each, \$2.75 per dozen.

OXALIS. Large, pink, white, lavender, and yellow flowers held well above dwarf sturdy growth. Keep close to the light to keep foliage from growing too long. Bulbs, 5c each, 50c per dozen.

REGALE ("A Royal Beauty"). The flowers are white, slightly suffused with pink, with a beautiful shade of canary yellow at the center, blending out part way up the trumpet. The fragrance is fascinating. A splendid hardy Lily for the garden, flowering in July. Well-grown bulbs often produce five to eight blooms. 65c each, \$7.00 per dozen.

CHIONODOXA (Glory of the Snow). Brilliant sky-blue flowers that come into bloom soon after the snow is gone. They require no further care when once planted. 50c doz., \$3.00 per 100.

FRITILLARIA MELEAGRIS (Snake's Head or Guinea Hen Flower). Pendant bell-shaped flowers oddly marked and checkered. Some are splashed white and purple, cream and maroon, etc. Does well in semi-shade and is perfectly hardy. 10 to 18 inches high. Blooms in the spring. 80c doz., \$6.00 per 100.

IXIAS (African Corn Lily). These charming flowers come from the Cape of Good Hope. Their rich and varied hues make a brilliant display in the spring, when planted outdoors in a protected place. They may be grown indoors for winter blooms also. 45c doz., \$3.00 per 100.

MUSCARI (Heavenly Blue Grape Hyacinths). Numerous spikes of light blue flowers in early spring. 50c doz.; \$3.00 per 100.

SCILLAS (Squills). Exquisite rich blue flowers in the early spring. A charmin geffect may be had by planting in conjunction with yellow crocus, Chionodoxas and Snowdrops. 70c doz., \$4.25 per 100.

SNOWDROPS. The loveliest and earliest spring flowers. Single Snowdrops, 50c doz., \$3.50 per 100. Double Snowdrops, 60c doz., \$4.00 per 100.

WINTER ACONITE (Eranthis Hyemalis). Golden blossoms look charming resting on an emerald-green cushion of leaves. The foliage remains long after the flowers and does well in a moist situation, such as under trees. 50c doz., \$3.50 per 100.

IRIS



Iris Germanica (Fleur-de-Lis)

IRIS, QUEEN OF PERENNIALS

No other flower will give you more delight and enjoyment than the stately, graceful Fleur-de-Lis. They bring all the colors and tints of the rainbow to you and return each year in increasing numbers to glorify your garden at the time when spring flowers have gone, but summer flowers have not yet come.

Plant shallow, barely covering the roots, in the early fall. Give Lime or Bone Meal, but avoid fresh manure.

"Standards" are the upper petals, "Falls" the lower ones.

ALBERT VICTOR. Light hyssop-violet.

CELESTE. Standards lavender-blue.

DR. BERNICE. Smoky lavender bronze.

FLAVASCENS. Pale lemon yellow.

FLORENTINA ALBA. White

IRIS KING. Brown standards, coppery yellow falls.

KOCHI. Rich claret purple. Early.

LOHENGRIN. Gigantic foliage and flowers. Deep violet mauve.

MME. CHERAU. White edged with bluish purple.

OSSING. Bright yellow standards, falls yellow brown.

PALLIDA DALMATICA. Standards and falls clear lavender blue shading to pale silvery blue at base. Sweet scented.

QUEEN OF THE MAY. Soft, rosy pink.

QUAKER LADY. Yellow standards, coppery falls.

RHEIN NIXE. Standards white, falls rich violet purple with distinct narrow white edge. Very large.

Roots, 30 cents each; any ten for \$2.50; ten of a kind, \$2.00

SPANISH IRIS

SPANISH IRIS. Known as "Orchids of the Hardy Flower Garden." They grow from 18 to 24 inches high and produce their exquisite airy blooms during the last of May and through June. Plant the latter part of September. Mixture containing all colors, bulbs, 75c per dozen.

Perennial and Biennial Seeds and Plants for Fall Planting

Year after year the hardy perennial garden is increasing in popularity. From early in April they continue to bloom with constant changing variety throughout the entire Summer and Fall. Once planted they appear themselves each year and do away with the necessity of annual seeding. Sown in late Summer or early Fall, bloom next year. No garden is complete without a liberal space devoted to hardy Perennials.

PLANTS. We can supply large field grown plants ready to be transplanted, after August 15th. For those who cannot conveniently raise their own plants from seed, or who have put off sowing until too late, our strong field grown plants are most satisfactory.



COLUMBINE

POSTAGE ON PLANTS. Add postage as follows: Single plants, 8c; 3 plants, 10c; 6 plants, 15c; 12 plants, 25c. We accept no responsibility for delays or conditions that may prove injurious to the contents.

ASTERS (Hardy or Michelmas Daisy). Lovely, daisy-like flowers, 4 to 5 ft. high; blooming September and October. Climax, blue violet; Novae-Angliae, lavender pink. Plants, 25c each; \$2.00 for 10.

933. PERENNIAL ASTERS MIXED. Various shades of blue. Pkt. 15c; 1/8 oz. 50c.

ASTILBE (Goat's Beard). An extra hardy plant of feathery plumes of flowers and neat, attractive foliage, 1/2 ft. tall. June and July.

America. Deep pink; excellent bloomer.

Gladstone. Snow white; 18 inches tall.

Queen Alexander. Pink.

Rubens. Rose red. Price of all Astilbe Plants, 45c each; \$1.25 for three.

BLEEDING HEART (Dicentra Spectabilis). Rose crimson. Plants, 45c each.

FALSE BLEEDING HEART (Dicentra Formosa). Flowers pink, fern-like foliage; 1 foot tall; May to June. Plants, 25c each; \$2.00 for 10.

819. CAMPANULA, SINGLE MIXED CANTERBURY BELLS. Blooms from early to midsummer; height, 2 ft. Of most attractive growth, and the second year produce abundantly the beautiful bell-flowers in many colors. Pkt. 10c; 1/4 oz. 25c. Plants, 25c each; \$2.00 for 10.

CHRYSANTHEMUM PLANTS. These are the hardy sorts producing a profusion of beautiful blooms from early September until frost, and sometimes even afterward.

Gold Climax. Large golden.

Red Doty. Large red.

Pink Dandy. Clear pink, medium early.

White Doty. Large white.

Pink Doty. Large pale pink.

Yellow Diana. Large light yellow.

Plants, 25c each; \$2.00 for 10 of one variety. One each of the above six for \$1.25.

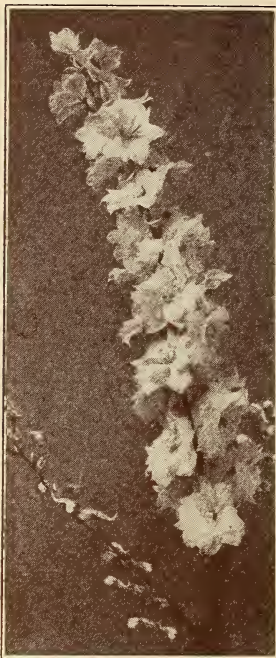
830. COLUMBINE (Aquilegia). 1 to 2 ft.; May to July. One of the most valuable of the early flowering perennials. The long-spurred blooms and lengthy stems are well adapted to use as cut flowers, but they also produce a beautiful effect when massed in the garden. They do best in a sheltered location that gets the sunshine.

Long Spurred Hybrids. Mixed colors, Pkt. 10c; 1/8 oz. 50c.

Chrysantha (Golden Columbine). Yellow flowers with long spurs.

Canadensis (American Columbine). Red and yellow flowers.

Plants 25c each; \$2.00 for 10.



Gold Medal Hybrid

EUPATORIUM (Coelestinum). A pretty hardy plant, with light blue flowers similar to the Ageratum. This is a particularly fine thing in hardy perennials; a splendid cut flower; 18 to 24 inches. Plants, 25 cts. each, \$2.00 for 10.

858a. **FOXGLOVE MIXED (Digitalis).** The plants grow three feet high and bear long spikes of thimble-shaped flowers, brilliantly colored and spotted. If planted in well-drained soil will thrive nicely. Pkt., 10 cts.; $\frac{1}{4}$ oz., 25 cts.; oz., 75 cts. Plants, 25 cts. each, \$2.00 for 10.

860. **GAILLARDIA GRANDIFLORA.** June to October; two feet. The beautiful single flowers are red in the center with clear yellow markings on outer edges of petal. Pkt., 10 cts.; $\frac{1}{4}$ oz., 25 cts.; oz., 75 cts. Plants, 25 cts. each, \$2.00 for 10.

HEMEROCALLIS (Yellow Day Lily).

FLAVA (Lemon Lily). Sweet scented, clear full yellow; $2\frac{1}{2}$ feet; flowers in June. 30 cts. each, 75 cts. for three, \$2.25 per doz.

866. **HIBISCUS MIXED (Mallow).** Of late the Mallows have become very popular, and are worthy of a place in all beds of perennials. The plants attain a height of from 4 to 6 feet and produce profusely the handsomest flowers from June until fall. Pkt., 10 cts.; $\frac{1}{4}$ oz., 20 cts.; oz., 75 cts. Plants, 25 cts. each, \$2.00 for 10.

HOLLYHOCKS. Six to 8 feet; August-September. These are best treated as biennials. One of the most showy of all hardy garden plants. The majestic plants produce magnificent long spikes bearing beautiful double flowers which measure 3 to 4 inches across.

867. Crimson; 867a. Maroon; 867b. Newport pink; 868. Salmon; 868a. White; 868b. Yellow. Pkt., 10 cts.; $\frac{1}{4}$ oz., 50 cts.; oz., \$1.50.

869. Double mixed. Pkt., 10 cts.; $\frac{1}{4}$ oz., 40 cts.; oz., \$1.25.

Plants, 25 cts. each, \$2.00 for 10 of one variety, or 10 unlabeled mixed.

910a. **ORIENTAL POPPY.** Three feet; May and June. Flowers of gorgeous brilliancy. Colors from soft rose to dazzling scarlet and richest maroon purple. Pkt., 10 cts.; $\frac{1}{4}$ oz., 40 cts. Plants, Scarlet Queen, Salmon Queen, 25 cts., \$2.00 for 10.

PHLOX (Hardy). One of the most important perennials. Does well in any soil. Produces large heads of fragrant flowers from early July to September. Height, $1\frac{1}{2}$ to 3 feet:

899. Choice mixed. Pkt., 10 cts.; $\frac{1}{4}$ oz., 75 cts.

Athis. Deep salmon.

Bridesmaid. White with pink eye.

Jules Sandreau. Extra large pink.

R. P. Struthers. Red. Plants, 25 cts., \$2.00 for 10 of one variety; any 6 for \$1.25.

PHLOX SUBULATA (Moss or Mountain Pink). An early Spring-flowering type with pretty moss-like, evergreen foliage, which, during the flowering season, in April and May, is hidden under the masses of bloom. An excellent plant for the rockery, the border, and invaluable for carpeting the ground. Plants, 25 cts. each, \$2.00 for 10.

818. **CANDYTUFT (Hardy).** May and June; six inches. Evergreen plants covered with pale pink blooms in spring and early summer. Excellent for rockeries or borders. Pkt., 10 cts.; $\frac{1}{4}$ oz., 25 cts. Plants, 25 cts., \$2.00 for 10.

831. **COREOPSIS GRANDIFLORA.** One to two feet; June to October. During the summer bears profusely golden yellow flowers which are very useful for cutting. Pkt., 10 cts.; $\frac{1}{4}$ oz., 25 cts.; oz., 75 cts. Plants, 25 cts., \$2.00 for 10.

845. **DAISY, ENGLISH DOUBLE MIXED (Bellis Perennis).** The hardy plants thrive best in cool, shady places. The attractive small, double flowers appear very early in the summer. Pkt., 10 cts.; $\frac{1}{4}$ oz., 40 cts. Plants, 25 cts. each, \$2.00 for 10.

846. **DAISY, SHASTA, ALASKA.** Large, white flowers with a yellow center that make a splendid show all summer. Useful for cutting. Pkt., 10 cts. and 25 cts.; $\frac{1}{4}$ oz., 75 cts. Plants, 25 cts. each, \$2.00 for 10.

DELPHINIUM (Perennial Larkspur)

852. **CHINENSIS MIXED.** Although a perennial, this will bloom in August if planted in early spring. On account of its dwarfness (2 to 3 feet high) and brilliant blue and white flowers, it is a popular plant for bedding and cut flowers. Pkt., 10 cts. and 25 cts.; $\frac{1}{4}$ oz., 75 cts. Plants, 25 cts. each, \$2.00 for 10.

853. **GOLD MEDAL HYBRIDS.** Mixture of the most beautiful tall varieties. Long graceful spikes of harmonizing blue colors. Plants grow 5 to 8 feet tall. Pkt., 20 cts.; $\frac{1}{4}$ oz., 50 cts. Plants, 35 cts. each, \$3.00 for 10.

854. **BELLADONNA.** Tall, light blue. Pkt., 20 cts. Plants, 25 cts. each, \$2.00 for 10.

BELLAMOSUM. A dark blue form of Belladonna with which it is identical excepting in color, which is a rich deep blue. Plants, 25 cts. each, \$2.00 for 10.

854a. **FORMOSUM.** Dark blue with white center. Pkt., 20 cts. Plants, 25 cts. each, \$2.00 for 10.

851. **DIANTHUS PLUMARIUS (Pheasant's Eye Pink).** Sweet scented, low growing, hardy fringed flowers, pink or white. Blooms in early summer. Pkt., 10 cts.; $\frac{1}{4}$ oz., 35 cts.; oz., \$1.00. Plants, 25 cts. each, \$2.00 for 10.



Bolgiano's Magnificent Trimardeaux Pansies

890. **EXHIBITION GIANTS.** The most beautiful forms and color combinations imaginable. The result of the efforts of Europe's best growers. Flowers attain a size of two to three inches under favorable conditions. Pkt., 25c; $\frac{1}{4}$ oz., 75c; oz., \$5.00. Plants, 10c each; \$1.00 per doz.

TUFTED PANSY

VIOLA, JERSEY GEM. One of the new and most valuable bedding Violas yet introduced. Well suited to our climate in which it will succeed in any good garden soil in a sunny position, blooming practically from May to the end of the season. Flowers are pure violet color with stems about 6 inches long. Plants, 25c each, \$2.00 for 10.

VIOLA, LUTEA. Bright yellow. 25c each, \$2.00 for 10.

909. **PYRETHRUM.** One to two feet; May and June. A very useful hardy perennial, daisy-like flowers. Most desirable for edging or bordering beds filled with other plants. Pkt., 10c; $\frac{1}{4}$ oz., 25c; oz., 85c. Plants, 25c each; \$2.50 per doz.

SEDUM (Stonecrop) SPECTABILE. A pretty erect-growing variety with broad, light green foliage and immense heads of showy rose-colored flowers during the Autumn; 18 inches. Plants, 25c each, \$2.00 for 10.

921. **SWEET ROCKET MIXED.** Plants attain a height of 2 feet and produce sweet scented panicles of white and lavender flowers. Pkt., 10c; $\frac{1}{2}$ oz., 25c; oz., 40c.

SWEET WILLIAM—An Old-Time, Hardy Garden Favorite

922a. **Newport Pink (Watermelon Pink).** Pkt., 10c; $\frac{1}{4}$ oz., 25c; oz., 80c.

923. **Scarlet Beauty.** Bright Scarlet; single. Pkt., 10c; $\frac{1}{4}$ oz., 25c; oz., 75c.

922b. **White (Double).** Pkt., 10c; $\frac{1}{4}$ oz., 25c; oz., 80c.

926. **Johnson's Giant Hybrids.** Immense flowers; large eyes. Pkt., 10c; $\frac{1}{4}$ oz., 25c.

913. **Double and Single Mixed.** Pkt., 10c; $\frac{1}{4}$ oz., 25c; oz., 75c. Plants of all varieties, 25c each; 10 of one variety for \$2.00.

VERONICA (Speedwell) SPICATA. Long spikes of bright blue flowers during June and July; 18 inches. An excellent border plant. Plants, 25c each, \$2.00 for 10.

931. **WALL FLOWER.** An attractive Biennial. Pkt., 10c; $\frac{1}{4}$ oz., 20c; oz., 60c. Plants, 25c each.

931a. **SIBERIAN WALL FLOWER.** Flashy trusses of orange yellow in May. Pkt., 10c; oz., 50c. Plants, 25c each; \$2.00 for 10.

TIGRINUM SPLENDENS (Tiger Lily). Orange, spotted black. 25c each; \$2.00 for 10.

PANSIES

Sow in drills during the middle of August, covering the seeds to a depth of 4 times their thickness, as soon as the plants are large enough to handle, thin out and transplant to stand nine inches apart. After cold weather sets in a mulch of leaves or straw should be spread over the bed for protection. In this manner the earliest spring blooms are obtained.

893. **GIANT ADONIS.** Beautiful light blue with white margin. Pkt., 10c and 25c; $\frac{1}{4}$ oz., 90c.

893a. **GIANT GOLDEN YELLOW PURPLE STAINED.** One of the most effective Pansies grown. A veritable mass of molten gold. Pkt., 10c and 25c; $\frac{1}{4}$ oz., 90c.

894. **GIANT FLOWERING TRIMARDEAU MIXED.** Finest and largest flowering varieties. Much attention has been paid to color combinations used in this mixture. Pkt., 10c and 25c; $\frac{1}{4}$ oz., 50c; oz., \$1.20. Plants, 10c each; \$1.00 per doz.

Roses

FOR FALL PLANTING

Our stock is budded on Japonica Multiflora Roots which is conceded to be the best stock for budding roses on by most of the leading rose growers. Fall is also recognized as the very best time to plant rose bushes as the plants become well rooted before the cold weather sets in and are in condition to go right on growing and blooming in the very early Spring.

STRONG 2-YEAR-OLD FIELD GROWN PLANTS

Five New Everblooming Varieties.

ANGELE PERNET. Rich, vivid, coppery-orange yellow.

DAME EDITH HELEN. Color a brilliant yet soft Rose du Barri Pink.

ETOILE DE HOLLAND. A deep velvety crimson rose.

REF. F. PAGE ROBERTS. A large double, beautifully formed, of indian yellow covered with carmine on the reverse of the pedals.

VILLE-DE-PARIS. A beautiful buttercup yellow. Fragrant and free blooming, Any of the above, \$1.25 each, 3 for \$3.50.

STANDARD VARIETIES. \$1 Each, 3 for \$2.75, 6 for \$5, 12 for \$9.50

BETTY. Glowing coppery rose, suffused with a golden sheen.

DUTCHESS OF WELLINGTON. An intense saffron yellow yellow stained deep crimson.

ETOILE DE FRANCE. Crimson with darker shading.

FRANCIS SCOTT KEY. Rich Crimson red.

KAISERINE AUGUSTA VICTORIA. Soft pearly white, tinted yellow.

LA FRANCE. A beautiful bright pink.

MME. EDOUARD HERRIOTT. Superb coral-red, shaded with yellow and bright scarlet.

MRS. AARON WARD. A distinct indian yellow, shading lighter toward edges.

MME. BUTTERFLY. Soft light pink.

RADIANCE. Brilliant rose-pink buds.

RED RADIANCE. Deep rose-red.

SOUVENIR DE CLAUDIUS PERNET. Flowers of sunflower-yellow.

CLIMBING ROSES. \$1 Each, 3 for \$2.75, 6 for \$5, 12 for \$9.50

CLIMBING LADY ASHTON. Everblooming; large, well-formed flowers of pale carmine pink with golden yellow at the base.

ZEPHIRINE DROUHIN. Everblooming; well-formed, bright silvery-pink, semi-double flowers of good size and exquisite perfume.

CLIMBING AMERICAN BEAUTY. Brilliant carmine flowers.

DR. W. VAN FLEET H. W. Beautiful pale pink buds.

MARY WALLACE. Charming flowers of brilliant warm pink.

PAUL SCARLET CLIMBER. Clear vivid scarlet.

SILVER MOON. Buds; pale yellow. Flowers pure white.

SPENCER, OR ORCHID-FLOWERING SWEET PEAS

The largest and most beautiful variety. Excellent results are obtained by planting three inches deep in October or November.

972. Clara Curtis. Primrose.

973. Constance Hinton. Best white.

974. Countess Spencer. Rose pink.

975. Dainty Spencer. White edged pink.

978. Fiery Cross. Red, orange, cerise.

980. George Herbert. Rosy carmine.

983. Illuminator. Salmon orange, cerise.

1001. Wedgewood. Fine blue.

The above varieties, pkt. 10c; oz. 25c; ¼ lb. 75c; lb. \$2.75.

1002. Superb Mixed. Including newest and most popular varieties. Pkt. 10c; oz. 20c; ¼ lb. 60c; lb. \$2.00.

949. Blanche Ferry. Grandiflora type. Rose and white. Pkt. 10c; oz., 15c; ¼ lb., 35c; lb., \$1.00.

EARLY SPENCER SWEET PEAS

They flower several weeks earlier than the regular Spencers.

958. Aviator. Large crimson.

959. Fair Maid. Blush pink suffused salmon.

900. Hercules. Giant rose pink.

962. Morning Star. Orange scarlet.

963. Peace. Rose pink on cream.

964. Pink and White. Pink on white.

965. Snowflake. Pure white.

966. Songster. Large lavender.

967. Warbler. Rich mauve purple.

968. Yarrowa. Bright rose, cream base.

The above varieties, Pkt. 10c; oz. 50c; ¼ lb. \$1.50.

969. Mixed Early Spencers. A well-balanced mixture of the newest and brightest colors. Pkt. 10c; oz. 40c; ¼ lb. \$1.40.

947. Bolgiano's Special Grandiflora Mixed. All the above varieties and others, pkt. 10c; oz. 15c; ¼ lb. 35c; lb. \$1.00.



Bolgiano's "Capitol City"

**Garden
Seed**

**For Fall
Planting**



We Pay Postage on All Vegetable Seed on Pkt., Ozs., ¼ Lbs. and Lbs., Excepting Peas, Beans and Corn. Peas, Beans and Sugar Corn We Pay Postage Only on Pkts., Pts., and Qts. Larger Quantities Carrying Charges Extra

BEANS

REFUGEE (1,000 to 1). One of the most popular and attractive beans we have, especially adapted for Fall truck and market growing. Will stand light frosts without injury. The pods are about 7 inches long, nearly straight, round. They are brittle and of fine flavor. The plants are strong, vigorous growers and very productive. Pkt. 10c; pt. 50c; qt. 90c; pk. \$4.00; bu. \$15.00.

	Pt.	Qt.	Pk.	Bu.
Stringless Refugee Greenpod.....	\$0.50	\$0.90	\$4.00	\$15.00
Black Valentine40	.75	2.75	10.00
King of the Earlies.....	.40	.75	2.85	10.50
Bolgiano's New Wax.....	.40	.75	3.50	12.00
Improved Stringless Refugee Wax.....	.45	.85	3.50	12.00
Wardwell's Kidney Wax.....	.40	.75	3.00	11.00
Hodson's Wax40	.75	3.00	11.00

LIMA BEANS

Ford Hook Bush Lima45	.85	4.75	18.00
Bolgiano's Enormous Bush Lima.....	.50	.90	4.00	15.00

BEEFS

	Pkt.	Oz.	¼ lb.	Lb.
Superb	\$0.10	\$0.15	\$0.35	\$1.25
Crosby Egyptian10	.15	.30	.85
Detroit Dark Red.....	.10	.15	.30	.85
Deep Blood Beauty.....	.10	.15	.30	.95
Wonderful Early Spring.....	.10	.15	.35	1.10
Eclipse10	.15	.30	.85
Crimson Globe10	.15	.20	.65
Lentz10	.15	.20	.65

Cabbage Seed

New Early. A favorite with the market gardeners. Pkt. 10c; oz. 25c; ¼ lb. 75c; 1 lb. \$3.00; 5 lbs. \$11.00. All postpaid.

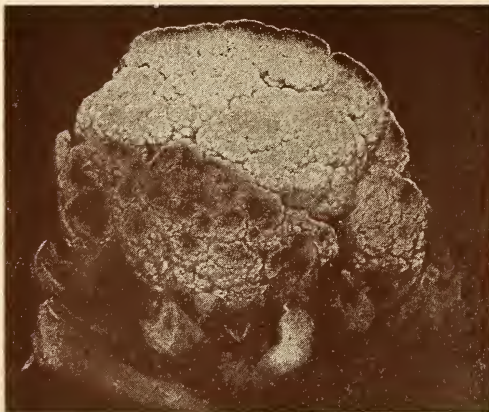
Charleston Large Wakefield. Resembles the Early Jersey Wakefield in form, but it is much larger. Very desirable for the market gardener. Pkt. 10c; oz. 25c; ¼ lb. 75c; 1 lb. \$2.75; 5 lbs. \$10.50. All postpaid.

Succession. A very good variety for second early use. Makes good sized flat heads and is very tender and of fine grain. Pkt. 10c; oz. 25c; ¼ lb. 75c; 1 lb. \$2.50; 5 lbs. \$10.50. Allpostpaid.



Bolgiano's New Early Cabbage

	Pkt.	Oz.	¼ lb.	Lb.
Big Winter Wakefield.....	\$0.10	\$0.25	\$0.80	\$3.00
Early Jersey Wakefield10	.25	.75	2.50
Large Charleston Wakefield.....	.10	.25	.75	2.50
Copenhagen Market10	.30	1.00	3.50
Early Flat Dutch.....	.10	.25	.75	2.50
Allhead Early10	.25	.75	2.50
All Season10	.25	.75	2.50
Extra Large Flat Dutch.....	.10	.25	.75	2.50
Drumhead Savoy.....	.10	.25	.75	2.50
Mammoth Red Rock.....	.10	.25	.75	2.50
Golden Acre10	.50	1.65	6.00
Wisconsin All Season (Wilt Resistant).....	.10	.45	1.35	5.00
Wisconsin Hollander No. 8 (Wilt Resistant).....	.10	.60	2.10	8.00



Early Snowball Cauliflower.

Cauliflower

Early Snowball. Pkt. 10c and 15c; ½ oz. \$1.25; oz. \$2.00; ¼ lb. \$7.50.

Dwarf Erfurt. Pkt. 10c and 15c; ½ oz. \$1.25; oz. \$2.00, ¼ lb. \$7.50.

Autumn Giant. Pkt. 10c and 15c; ½ oz. 30c; oz. 50c; ¼ lb. \$1.65; lb. \$6.00.

Collards

True Georgia Southern, Pkt. 10c; oz. 15c; ¼ lb. 25c; lb. 75c.

CARROT

Chantenay. For a general crop the best; the largest yield; the most profitable for the market gardeners. Flesh sweet, crisp and tender. It is a desirable second early Carrot for the home garden and is also suitable for field culture. Pkt. 10c; oz. 15c; ¼ lb. 30c; lb. 85c.

Danvers. Medium early. Pkt. 10c; oz. 15c; ¼ lb. 30c; lb. 85c.

Oxheart. Early. Pkt. 10c; oz. 15c; ¼ lb. 30c; lb. 90c.

Early Rubicon. Pkt. 10c; oz. 15c; ¼ lb. 35c; lb. \$1.00.



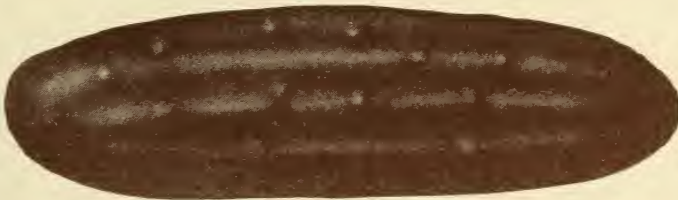
Chantenay Carrot

CELERY

Golden Self-Blanching Bolgiano's Special Strain. The ribs are perfectly solid, crisp, brittle and of delicious flavor. It is self-blanching to a very remarkable degree, for without banking up or any covering whatever, even the outer ribs become a handsome, fresh, yellowish white color. The heart is large and solid and of a beautiful, rich, golden yellow color. Pkt. 10c; oz. 55c; ¼ lb. \$1.90; lb. \$7.00.

	Pkt.	Oz.	¼ lb.	Lb.
Easy Blanching	\$0.10	\$0.30	\$1.00	\$3.50
Sweet Nut10	.15	.50	1.75
Giant Pascal10	.15	.35	1.25
Celeriac, Giant Smooth Prague.....	.10	.15	.50	1.75

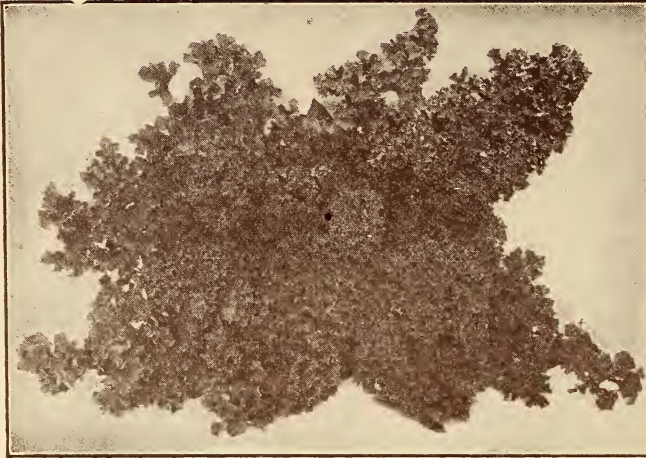
CUCUMBER



Bolgiano's Early Fortune Cuke

Bolgiano's Early Fortune Cucumber. By far the earliest and best cucumber for table, market or shipping purposes. Rich attractive deep green. Regular in size. Free from bitterness. Crisp and brittle. Pkt. 10c; oz. 15c; ¼ lb. 45c; lb. \$1.50.

	Pkt.	Oz.	¼ lb.	Lb.
Bolgiano's Prosperity White Spine.....	\$0.10	\$0.15	\$0.35	\$1.25
Klondyke10	.15	.30	.95
Arlington White Spine.....	.10	.15	.25	.90
Improved Extra Early White Spine.....	.10	.15	.30	.95



Dwarf Curled Norfolk Kale.

vigorous habit; perfectly hardy, bright green color, and very attractive in

10c; oz. 15c; $\frac{1}{4}$ lb. 25c; lb. 75c.

EMERALD BEAUTY KALE. Distinct blue-green. Heavily curled. Pkt. 10c; oz. 15c; $\frac{1}{4}$ lb. 25c; lb. 75c.

SIBERIAN DWARF CURLED. 50c lb.

KALE

Extra Dwarf Green Curled Scotch, or Norfolk. It is hardy and will remain over winter in any place where temperature does not go below zero. Pkt. 10c; oz. 15c; $\frac{1}{4}$ lb. 25c; lb. 85c.

New American Long-Standing Extra Curled Kale. Beautiful green color, perfectly hardy. Will stand the coldest winters. Pkt. 10c; oz. 15c; $\frac{1}{4}$ lb. 25c; lb. 75c.

Imperial Curly Long-Standing. A beautiful curled and crimped sort, of strong, appearance. Pkt.

ENDIVE

Escarole, or Broad-Leaved Batavian. Leaves a pale green. Forms large heads of broad, thick leaves. Pkt. 10c; oz. 15c; $\frac{1}{4}$ lb. 45c; lb. \$1.50

Green Curled. Self-blanching. Pkt. 10c; oz. 15c; $\frac{1}{4}$ lb. 35c; lb. \$1.25.

White Curled. As the color of the leaves is a light golden yellow, little or no blanching is required. Pkt. 10c; oz. 15c; $\frac{1}{4}$ lb. 35c; lb. \$1.25.

LETTUCE

Big Boston (Special Stock). Produces during all seasons, under ordinary favorable conditions, splendid, large, buttery-yellow heads, packed with thoroughly blanched leaves, crisp, tender and sweet. Although "Big Boston" is one of the best large-heading midsummer Lettuces, it is also peculiarly adapted for late fall culture. Pkt. 10c; oz. 15c; $\frac{1}{4}$ lb. 35c; lb. \$1.25.

Los Angeles. Large, late. Pkt. 10c; oz. 25c; $\frac{1}{4}$ lb. 75c; lb. \$2.50. Postpaid.

Trianon Cos. Pkt. 10c; oz. 15c; $\frac{1}{4}$ lb. 45c; 1 lb. \$1.50.

Masterpiece. Pkt. 10c; oz. 25c; $\frac{1}{4}$ lb. 85c; lb. \$3.00.

May King. Pkt. 10c; oz. 15c; $\frac{1}{4}$ lb. 45c; lb. \$1.50.

New York or Wonderful. Pkt. 10c; oz. 25c; $\frac{1}{4}$ lb. 75c; lb. \$2.50.

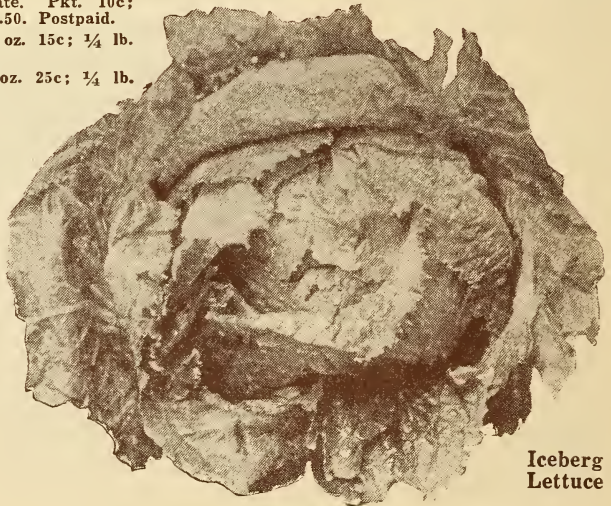
Hanson. Pkt. 10c; oz. 15c; $\frac{1}{4}$ lb. 45c; lb. \$1.50.

Grand Rapids. Pkt. 10c; oz. 15c; $\frac{1}{4}$ lb. 45c; lb. \$1.50.

Iceberg. Pkt. 10c; oz. 15c; $\frac{1}{4}$ lb. 45c; lb. \$1.50.

Eclipse Cos. Pkt. 10c; oz. 15c; $\frac{1}{4}$ lb. 45c; lb. \$1.50.

Salamander. Pkt. 10c; oz. 15c; $\frac{1}{4}$ lb. 45c; lb. \$1.25.



Iceberg Lettuce

Muskmelon

	Pkt.	Oz.	¼ lb.	Lb.
Sweet Air.....	\$0.10	\$0.15	\$0.45	\$1.50
Rockyford10	.15	.30	.90
Junior Rockyford.....	.10	.15	.50	1.75
Unsurpassed10	.20	.60	2.00
Knight10	.15	.35	1.25
Baltimore Nutmeg.....	.10	.15	.35	1.00

Watermelon

	Pkt.	Oz.	¼ lb.	Lb.
General Pershing.....	\$0.10	\$0.15	\$0.35	\$1.00
Tom Watson.....	.10	.15	.25	.75
Irish Gray.....	.10	.15	.25	.85
Florida Favorite.....	.10	.15	.25	.75
Kleckley Sweet.....	.10	.15	.25	.75
Excell10	.15	.25	.85

PEAS

On Peas, Beans and Sugar Corn, We Pay Postage Only on Pkts., Pts. and Qts. Larger Quantities Carrying Charges Extra

Laxtonian. Extremely early, wrinkled Pea. Peas very sweet; deep green. Pkt. 10c; pt. 40c; qt. 75c; pk. \$3.00; bu. \$11.00.

Thomas Laxton. Pkt. 10c; pt. 40c; qt. 75c; pk. \$2.75; bu. \$10.00.

Gradus. Pkt. 10c; pt. 40c; qt. 75c; pk. \$2.75; bu. \$10.00.

	Pt.	Qt.	Pk.	Bu.
Early Bird	\$0.40	\$0.75	\$3.50	\$12.00
Early Springtime40	.75	2.75	10.00
Long Pod Alaska40	.75	2.70	9.75
Pilot40	.75	2.70	9.75
Extra Early Alaska.....	.35	.65	2.50	9.00
Ameer35	.65	2.65	9.50
First and Best.....	.35	.65	2.50	9.00
Wonder Worker40	.75	2.85	10.50
100% Profit40	.75	3.15	11.50
Little Marvel40	.75	3.00	11.00
Cracker Jack40	.75	2.85	10.50
Telephone40	.75	2.75	10.00
Champion of England.....	.35	.65	2.50	9.00
Improved Stratagem40	.75	2.75	10.00
Prolific Early Market.....	.35	.65	2.50	8.75
Notts Excelsior40	.75	2.75	10.00
Premium Gem40	.75	2.75	10.00
American Wonder40	.75	3.10	11.25
Pedigree Extra Early.....	.35	.65	2.50	9.00
Bolgiano's New Victory.....	.40	.75	2.80	10.25
Horsford's Market Garden...	.40	.75	2.85	10.50
Alderman40	.75	2.75	10.00
Unno (Dwarf Champion).....	.40	.75	2.75	10.00
Improved Stratagem40	.75	2.75	10.00
Melting Sugar40	.75	3.15	11.50



Early Bird Peas

ONIONS

	Pk.	Oz.	¼ lb.	Lb.
White Silver Skin.....	\$0.10	\$0.25	\$0.80	\$2.75
Southport White Globe.....	.10	.25	.75	3.00
Southport Yellow Globe.....	.10	.20	.65	2.25
Yellow Globe Danvers.....	.10	.20	.60	2.00
Red Wathersfield10	.20	.60	2.00
White Portugal10	.25	.80	2.75
Yellow Flat Danvers.....	.10	.15	.50	1.75
Crystal Wax Bermuda.....	.10	.35	1.05	3.75
White Bermuda10	.30	1.00	3.50
Red Bermuda10	.25	.75	2.50

Fairfax Co., Feb. 6, 1928.

F. W. Bolgiano & Co.:

I would like very much to have one of your seed catalogs. I saw a garden last year grown entirely from your seed which was wonderful. I want to do equally as well this year.

JAMES H. CLARKE.



Early Scarlet Globe Radish

RADISHES

Early Scarlet Globe. A splendid extra early, round, bright red radish. Pkt. 10c; oz. 15c; $\frac{1}{4}$ lb. 25c; lb. 75c. All postpaid.

White Tip Scarlet Turnip. Pkt. 10c; oz. 15c; $\frac{1}{4}$ lb. 25c; lb. 85c.

Early Long Scarlet Short Top. Pkt. 10c; oz. 15c; $\frac{1}{4}$ lb. 25c; lb. 75c.

Long Red. The roots are slender and are often six to seven inches long. Pkt. 10c; $\frac{1}{4}$ lb. 25c; lb. 75c.

Icicle. Long White. Pkt. 10c; $\frac{1}{4}$ lb. 25c; lb. 75c; 5 lbs. \$3.25. All postpaid.

White Chinese Winter. Pkt. 10c; oz. 15c; $\frac{1}{4}$ lb. 25c; lb. 75c.

Chinese Rose Winter. Pkt. 10c; oz. 15c; $\frac{1}{4}$ lb. 25c; lb. 75c.

Round Black Spanish. Pkt. 10c; oz. 15c; $\frac{1}{4}$ lb. 30c; lb. 90c.

Long Black Spanish. Pkt. 10c; oz. 15c; $\frac{1}{4}$ lb. 30c; lb. 90c.

PARSLEY

Market Gardener's Triple Curled. Exceedingly large yielder. Stands heat and cold. Pkt. 10c; oz. 15c; $\frac{1}{4}$ lb. 30c; lb. 75c. All postpaid.

PEPPER

Royal King. Pkt. 10c; oz. 30c; $\frac{1}{4}$ lb. \$1.00; lb. \$3.50.

Chinese Giant. Pkt. 10c; oz. 45c; $\frac{1}{4}$ lb. \$1.35; lb. \$5.00.

Ruby King. Large scarlet fruit; rather mild flavor. Pkt. 10c; oz. 25c; $\frac{1}{4}$ lb. 75c; lb. \$2.50.

World Beater. Pkt. 10c; oz. 30c; $\frac{1}{4}$ lb. \$1.00; lb. \$3.50.

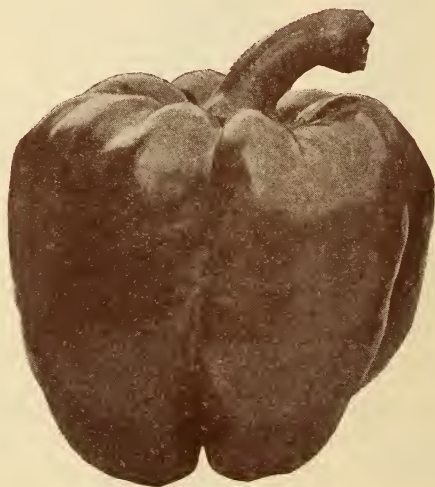
Perfection. Pimento. Pkt. 10c; oz. 25c; $\frac{1}{4}$ lb. 85c; lb. \$3.00. Postpaid.

Bell or Bull Nose. Pkt. 10c; oz. 25c; $\frac{1}{4}$ lb. 90c; lb. \$3.25.

Scarlet Mammoth Pepper. Pkt. 10c; oz. 55c; $\frac{1}{4}$ lb. \$1.90; lb. \$7.00.

Long Red Cayenne. Pkt. 10c; oz. 25c; $\frac{1}{4}$ lb. 90c; lb. \$3.25.

Red Chili. Pkt. 10c; oz. 35c; $\frac{1}{4}$ lb. \$1.15; lb. \$4.00.



Chinese Giant Pepper

TURNIPS

Purple Top White Globe. Superior quality. A heavy cropper, early, and a fine keeper. Pkt. 10c; oz. 15c; ¼ lb. 20c; lb. 50c; 5 lbs. \$2.25. All Postpaid.

Early Snowball. Very fine. Pkt. 10c; oz. 15c; ¼ lb. 20c; lb. 60c.

Golden Ball. Yellow, early. Pkt. 10c; oz. 15c; ¼ lb. 20c; lb. 60c.

Extra Early Purple Top Milan. Pkt. 10c; oz. 15c; ¼ lb. 25c; lb. 75c.

Purple Top White Flat Strap Leaf. Pkt. 10c; oz. 15c; ¼ lb. 20c; lb. 50c.

White Flat Dutch Extra Early. Pkt. 10c; oz. 15c; ¼ lb. 20c; lb. 40c.

Green Top Yellow Aberdeen. Pkt. 10c; oz. 15c; ¼ lb. 20c; lb. 60c.

Yellow Globe. Pkt. 10c; oz. 15c; ¼ lb. 20c; lb. 60c.

Amber Globe. Pkt. 10c; oz. 15c; ¼ lb. 20c; lb. 60c.

Rutabaga—Long Island Improved Purple Top. Pkt. 10c; oz. 15c; ¼ lb. 25c; lb. 75c.



Purple
Top
White
Globe
Turnip

SPINACH

Bolgiano's Selected Bloomsdale Savoy. A mammoth seeded selection that possesses a vitality and vigor of growth and far outyields any other variety. After many years of tireless effort at breeding we are pleased to be able to offer a limited quantity of this improvement on the old standby. Productive, tender and excellent quality. Oz. 10c; ¼ lb. 15c; lb. 30c; 5 lbs. \$1.25. All postpaid.

Norfolk Bloomsdale Curled Savoy Blight Resistant. Pkt. 10c; oz. 15c; ¼ lb. 20c; lb. 30c.

Curled Long Season. Pkt. 10c; oz. 15c; ¼ lb. 20c; lb. 40c.

Princess Juliana. Pkt. 10c; oz. 15c; ¼ lb. 20c; lb. 45c.

King of Denmark. Pkt. 10c; oz. 15c; ¼ lb. 20c; lb. 45c.

New Spring. Oz. 10c; ¼ lb. 15c; lb. 30c; 5 lbs. \$1.25. All postpaid.

Victoria. Oz. 10c; ¼ lb. 15c; lb. 30c; 5 lbs. \$1.25. All postpaid.



Livingston's Globe Tomato

TOMATOES

The Arlington (Strain of Marglobe). Pkt. 10c and 25c; oz. 50c; ¼ lb. \$1.65; lb. \$6.00.

Senator. Pkt. 10c and 25c; oz. 45c; ¼ lb. \$1.35; lb. \$5.00.

Washington. Pkt. 10c and 25c; oz. 50c; ¼ lb. \$1.65; lb. \$6.00.

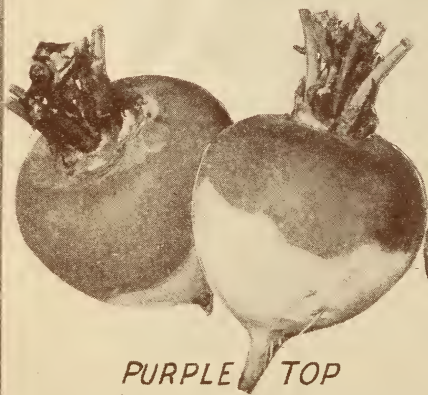
Improved Stone. Pkt. 10c; oz. 25c; ¼ lb. 80c; lb. \$2.75.

Greater Baltimore. Pkt. 10c; oz. 35c; ¼ lb. \$1.15; lb. \$4.00.

Florida Special. Blight resistant. Pkt. 10c; oz. 40c; ¼ lb. \$1.40; lb. \$4.50. Postpaid.

Livingston's Globe. Purple-red. Pkt. 10c; oz. 35c; ¼ lb. \$1.25; lb. \$4.00.

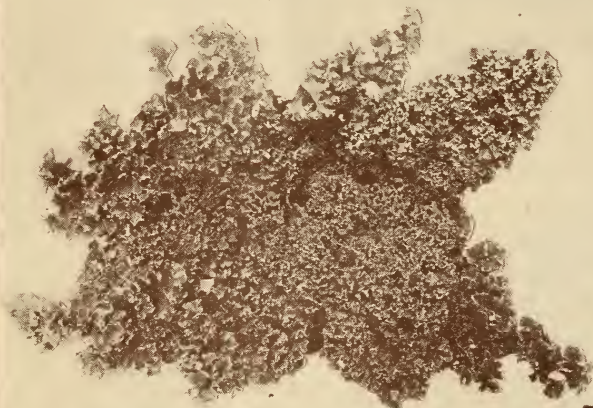
Bolgiano's "Capitol City" Garden Seeds For Fall Planting



PURPLE TOP
WHITE GLOBE TURNIP
PKT 10¢ : OZ 15¢ : ¼ LB 20¢ : LB 50¢
POSTPAID



LONG STANDING BLOOMSDALE SAVOY
SPINACH: PKT. 10¢ : ¼ LB 15¢ : LB 30¢



DWARF CURLED NORFOLK KALE
PKT. 10¢ : OZ 15¢ : ¼ LB 25¢ : LB 85¢
POSTPAID



BOLGIANO'S
SCARLET GLOBE RADISH
PKT 10¢ : OZ 15¢ : ¼ LB 25¢ : LB 75¢
POSTPAID

F. W. Bolgiano & Co.
Washington, D. C.