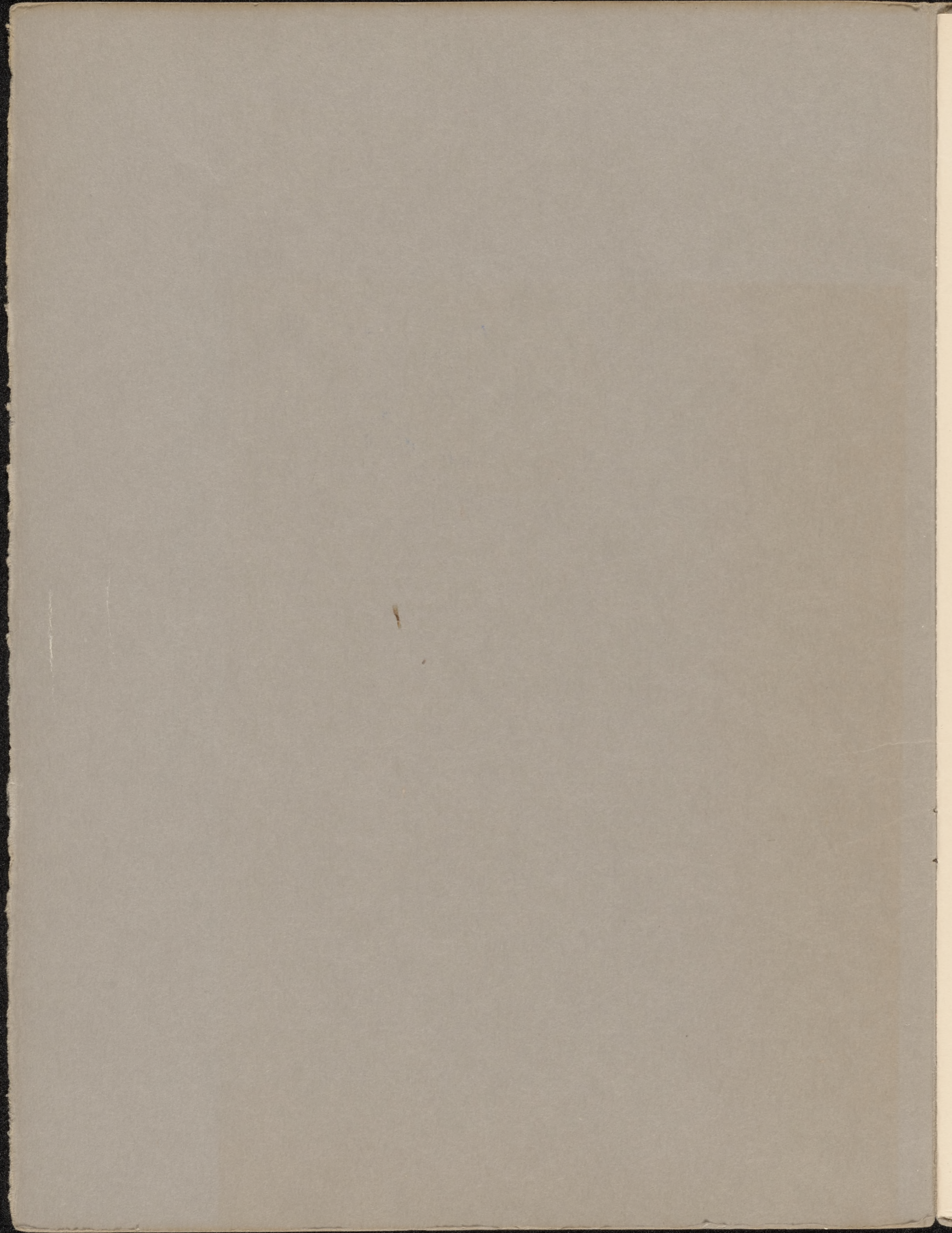


CORNER-STONE · LAYING
LOS · ANGELES · CITY · HALL



MCMXXVII

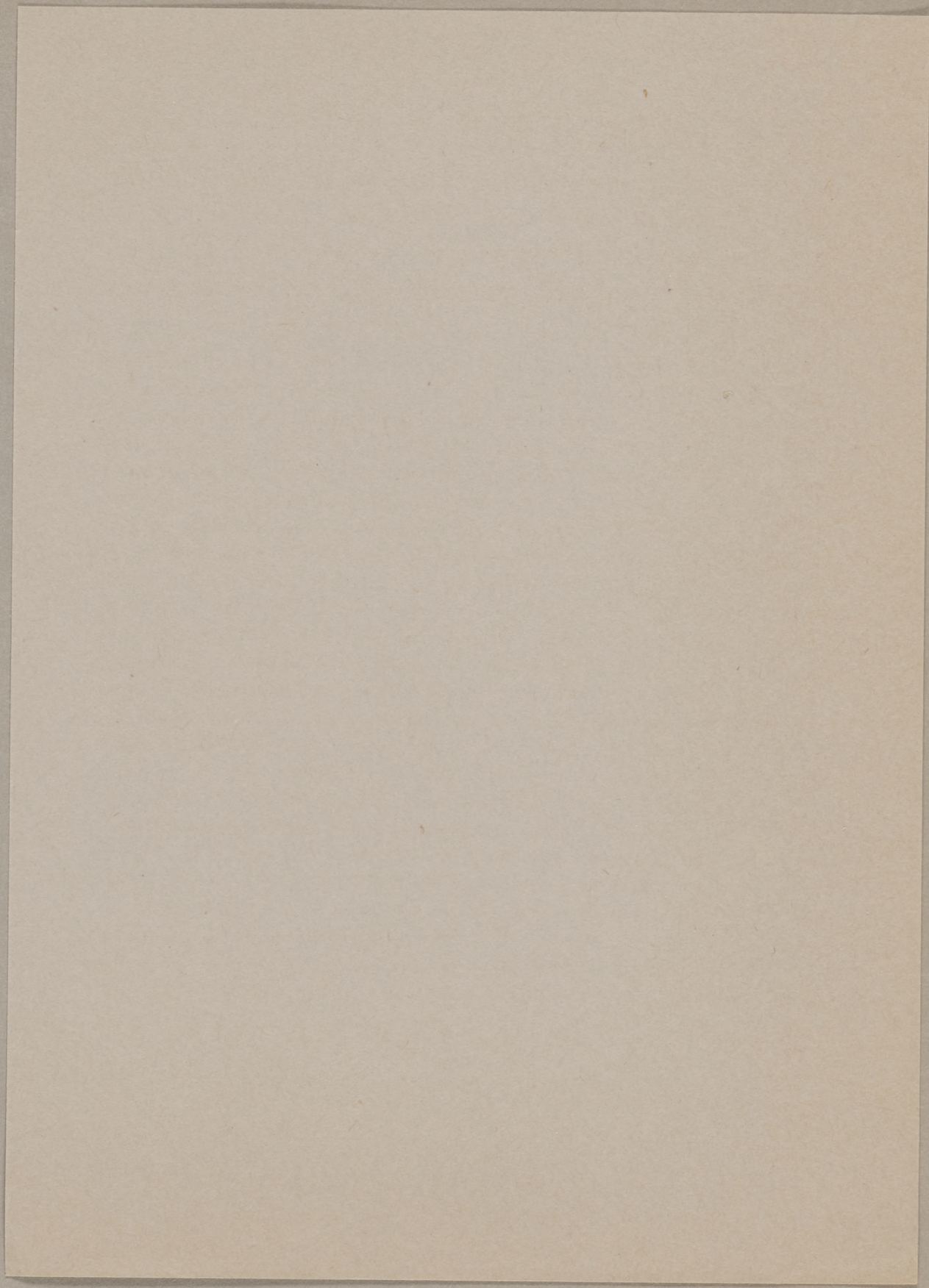


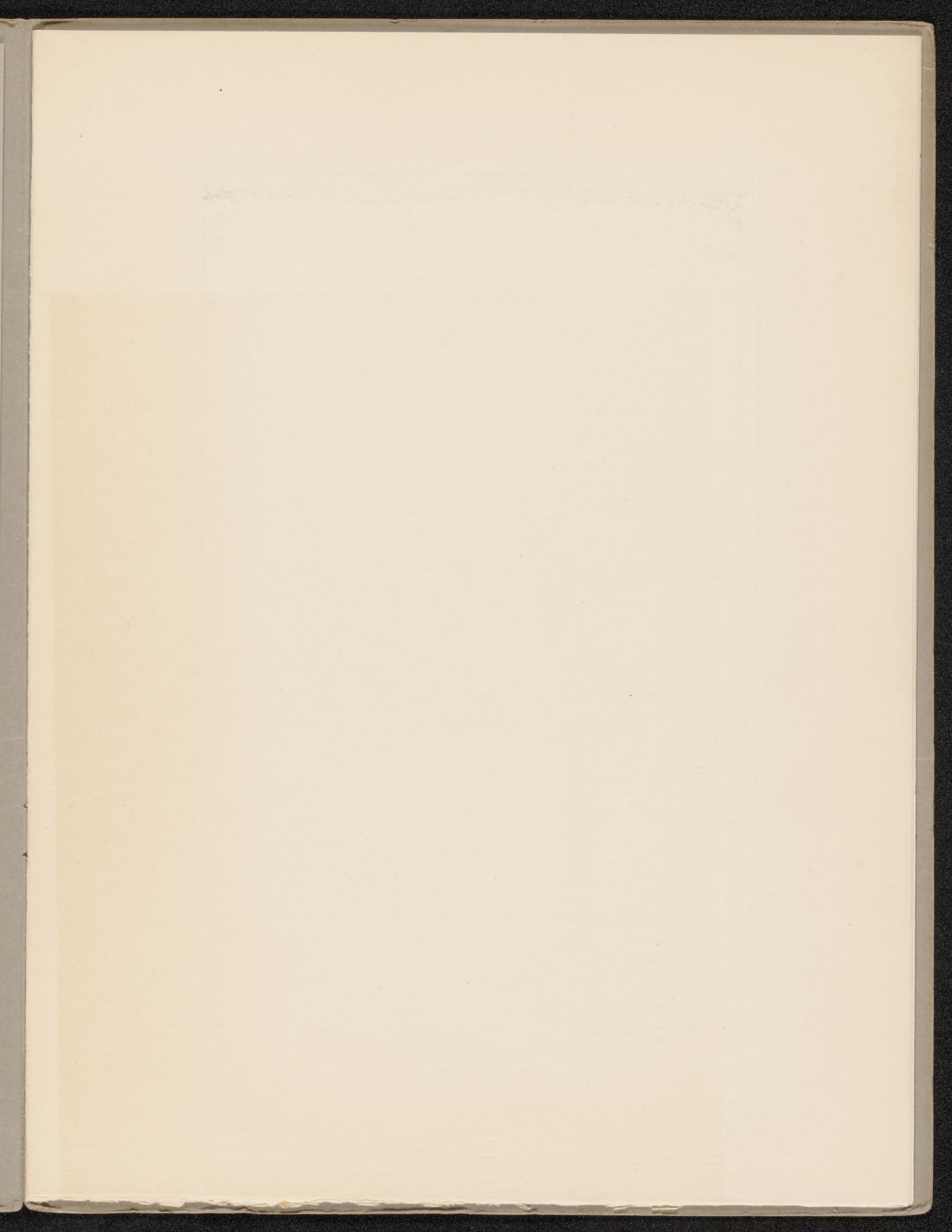
THIS BROCHURE

is presented to you as a souvenir for the Laying of the Corner-stone of Los Angeles' new City Hall, June twenty-second, nineteen hundred and twenty-seven. The complete list of the articles deposited in the crypt of the corner stone follows:

☞ History of the City Hall site, (by Joseph Mesmer) ☞ Charter of the City of Los Angeles ☞ Historical Record of the Pioneer Society of Los Angeles County ☞ Annual Message of Mayor Cryer ☞ Annual Report of the Controller of the City of Los Angeles ☞ The Budget of the City of Los Angeles for fiscal year, 1927-1928 ☞ History of Los Angeles Chamber of Commerce, with photographs of its officers ☞ Account of the Discovery of Gold in California, (by Rev. Eugene Sugranes, C. M. F.) ☞ Photographs of Drawing of completed building ☞ Composite Photograph of structural steelwork of building ☞ Photograph of Building, taken June 15, 1927 ☞ List of Judges and Officers of the Superior Court for the County of Los Angeles ☞ Signatures of the personnel of the Mayor's Office ☞ Names of employees of Raymond Granite Company, who cut and carved the corner-stone ☞ Parchment Scroll, containing signatures of all those who aided in the preparation of plans and papers for the building ☞ The pen used for these signatures ☞ El Camino Real, The King's Highway (by Rev. Eugene Sugranes, C. M. F.) ☞ Three gold nuggets from Los Angeles County ☞ Poem, "Gold," (by Clark B. Stocking) ☞ Apostrophe, "To Our Pioneers" ☞ Copy of song, "The Golden State," (by Violet Estelle Barter) ☞ Copy of song, "California," (by Silverwood) ☞ Los Angeles Telephone Directory ☞ Autographed photograph of Mayor Cryer ☞ Copy of Invitation ☞ Copy of Brochure, with Program ☞ Copy of Constitution of Native Sons of the Golden West ☞ Copy of "Grizzly Bear," official organ of the Native Sons of the Golden West ☞ Copies of the following Los Angeles newspapers: The Times, The Examiner, The Daily News, The Express, The Herald, The Record, The Searchlight ☞ New Lindbergh Air Mail Stamp ☞ Progress charts of structural steel and concrete in the building.

BOARD OF PUBLIC WORKS

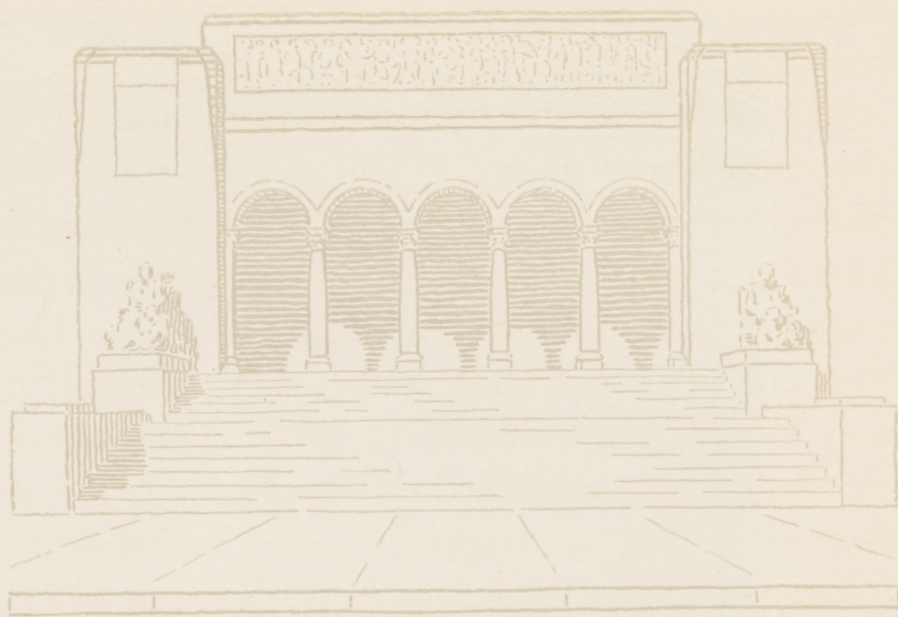






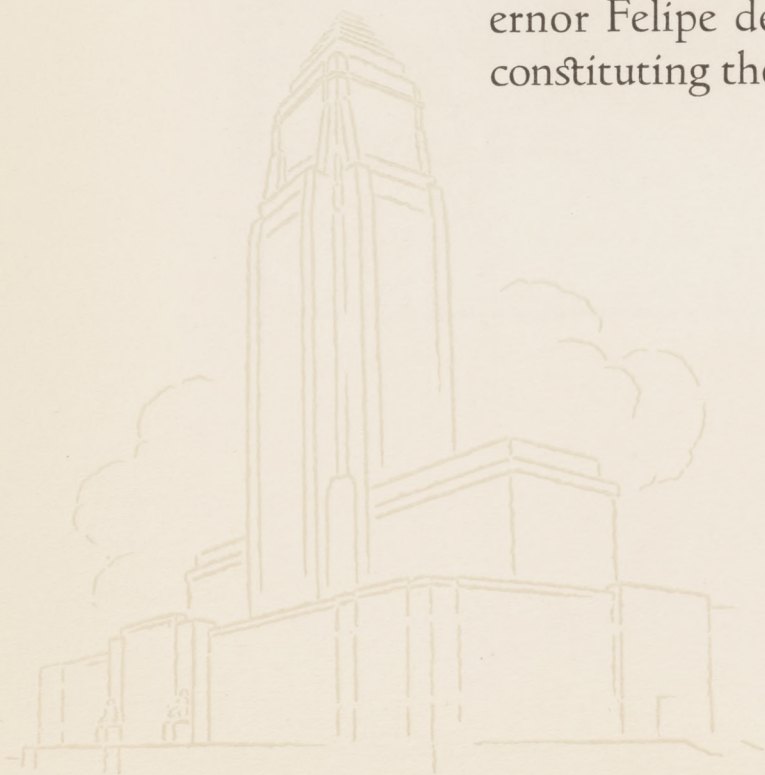
CORNER-STONE LAYING · LOS ANGELES CITY HALL
JUNE TWENTY-SECOND
NINETEEN HUNDRED TWENTY-SEVEN





FROM THE PAGES OF HISTORY

☞ 1769: The site of the city was first visited by white men on August second, when the Portola Expedition passed through on its way north and named the community Nuestra Senora Reina de Los Angeles. ☞ 1781: On September fourth the founding of the pueblo was accomplished by Governor Felipe de Neve, with forty-four persons constituting the total population. ☞ 1853: At this

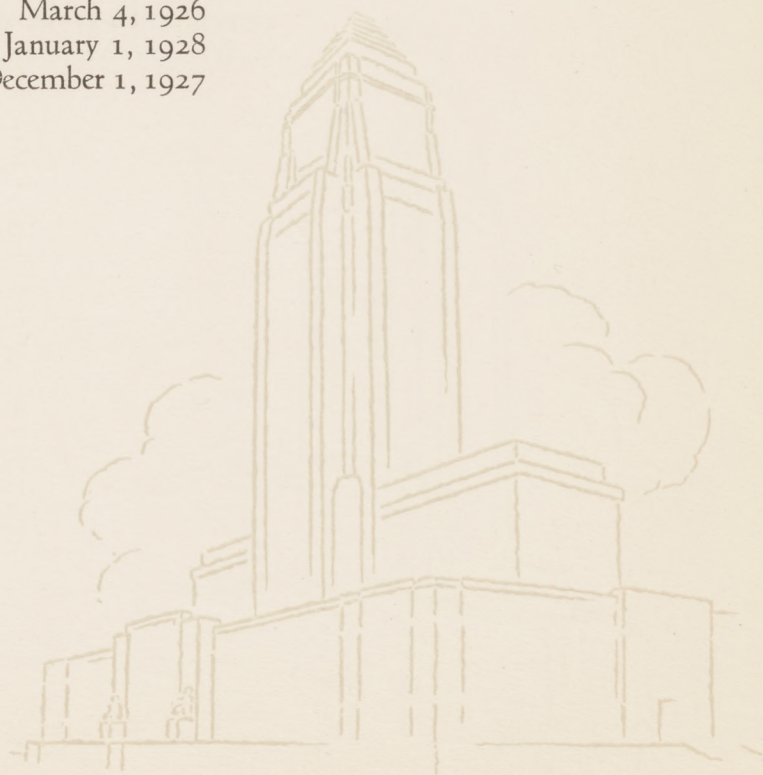


LAYING THE CORNER STONE · THE LOS ANGELES CITY HALL

time the city and county offices were housed in a one-story adobe structure located on the northwest corner of Spring and Franklin streets, just across the street from this site. ¶ 1867: The county and district courts were moved to the second story of a building which occupied the space whereon the tower of this building now stands. ¶ 1884: The first city hall was built, and is still standing, at 213 West Second street. ¶ 1888: The present city hall was constructed on Broadway between Second and Third streets. ¶ 1910: Spring street frontage of 225 feet, including the Temple block, was purchased for \$500,000 as a site for a future city hall, and now constitutes the north end of the site of this building.

FACTS AND DATES CONCERNING CONSTRUCTION OF NEW CITY HALL

Total cubic contents	12,028,000 cubic feet
Usable floor area	507,715 square feet
Height of tower above Main street	452 feet
Size of tower foundation	115 feet square
Tonnage of structural steel in building	8,167 tons
Volume of concrete in building	801,500 cubic feet
Architects employed	August 15, 1925
Excavation started	March 4, 1926
Contract date of completion	January 1, 1928
Estimated date of completion	December 1, 1927



LAYING THE CORNER STONE · THE LOS ANGELES CITY HALL

GRAND OFFICERS OF THE GRAND PARLOR
NATIVE SONS OF THE GOLDEN WEST
OFFICIATING AT THE CORNER STONE LAYING

Grand President, Charles A. Thompson
of Santa Clara

Past Grand President, Hilliard E. Welch
of Lodi

Grand First Vice President, James A. Wilson
of San Francisco

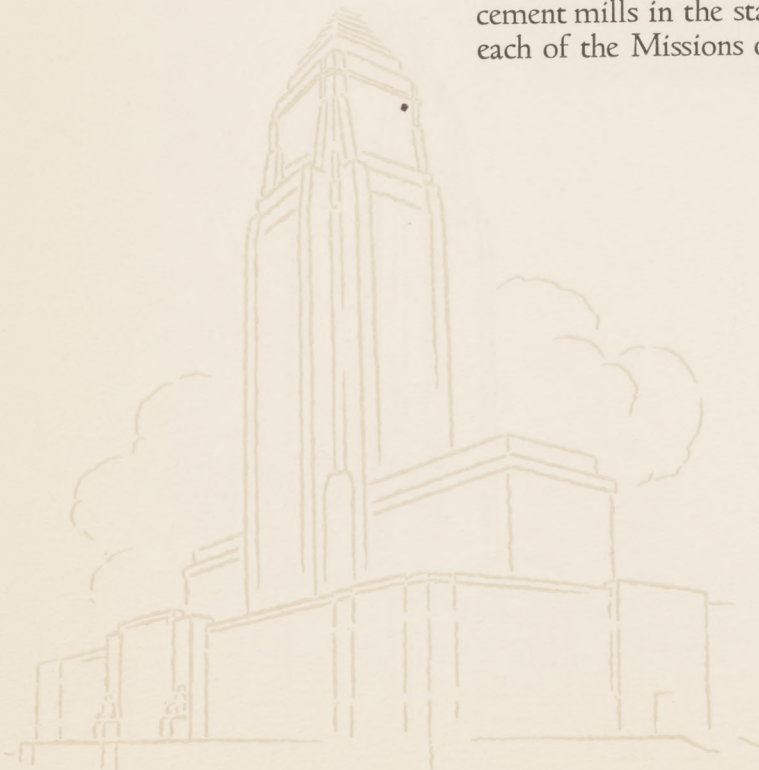
Grand Second Vice President, Charles L. Dodge
of Martinez

Grand Third Vice President, John T. Newell
of Los Angeles

Grand Secretary, John T. Regan
of San Francisco

Grand Marshal, H. C. Lichtenberger
of Los Angeles

[NOTE: The entire State of California contributed to the mortar with which the corner stone is sealed. The sand was gathered from every county of California, the cement was contributed by all the cement mills in the state, and the water was brought from the site of each of the Missions of California.]



LAYING THE CORNER STONE · THE LOS ANGELES CITY HALL

PROGRAM

Edward J. Delorey, *Presiding*

Address, Hon. George E. Cryer
Mayor of Los Angeles

Address, Hon. C. C. Young
Governor of California

Address, Daniel F. McGarry
President Los Angeles Chamber of Commerce

Address, Hon. Charles A. Thompson
Grand President Native Sons of the Golden West

Laying of the Corner Stone
Grand Officers of the Native Sons of the Golden West

Song, Selected

Song, "America," Assemblage

Music by the
Los Angeles Fire Department
Band



LAYING THE CORNER STONE · THE LOS ANGELES CITY HALL

Hon. George E. Cryer, *Mayor*

BOARD OF PUBLIC WORKS

Hugh J. McGuire, *President*

Edward J. Delorey, *Vice President*
(Commissioner in charge of Building)

Arthur Eldridge

A. W. L. Dunn

J. S. Horn

John C. Austin }
Albert C. Martin } *Architects*
John Parkinson }

C. J. Kubach Company, Inc.
General Contractor



LAYING THE CORNER STONE · THE LOS ANGELES CITY HALL

THE COUNCIL
OF THE CITY OF LOS ANGELES

Boyle Workman, *President*

Charles H. Randall

Robert M. Allan

I. F. Hughes

R. S. Sparks

E. E. Moore

Ralph L. Criswell

Frank L. Shaw

W. J. Sanborn

Otto J. Zahn

Peirson M. Hall

A. J. Barnes

Carl I. Jacobson

I. C. Ash

Charles J. Colden

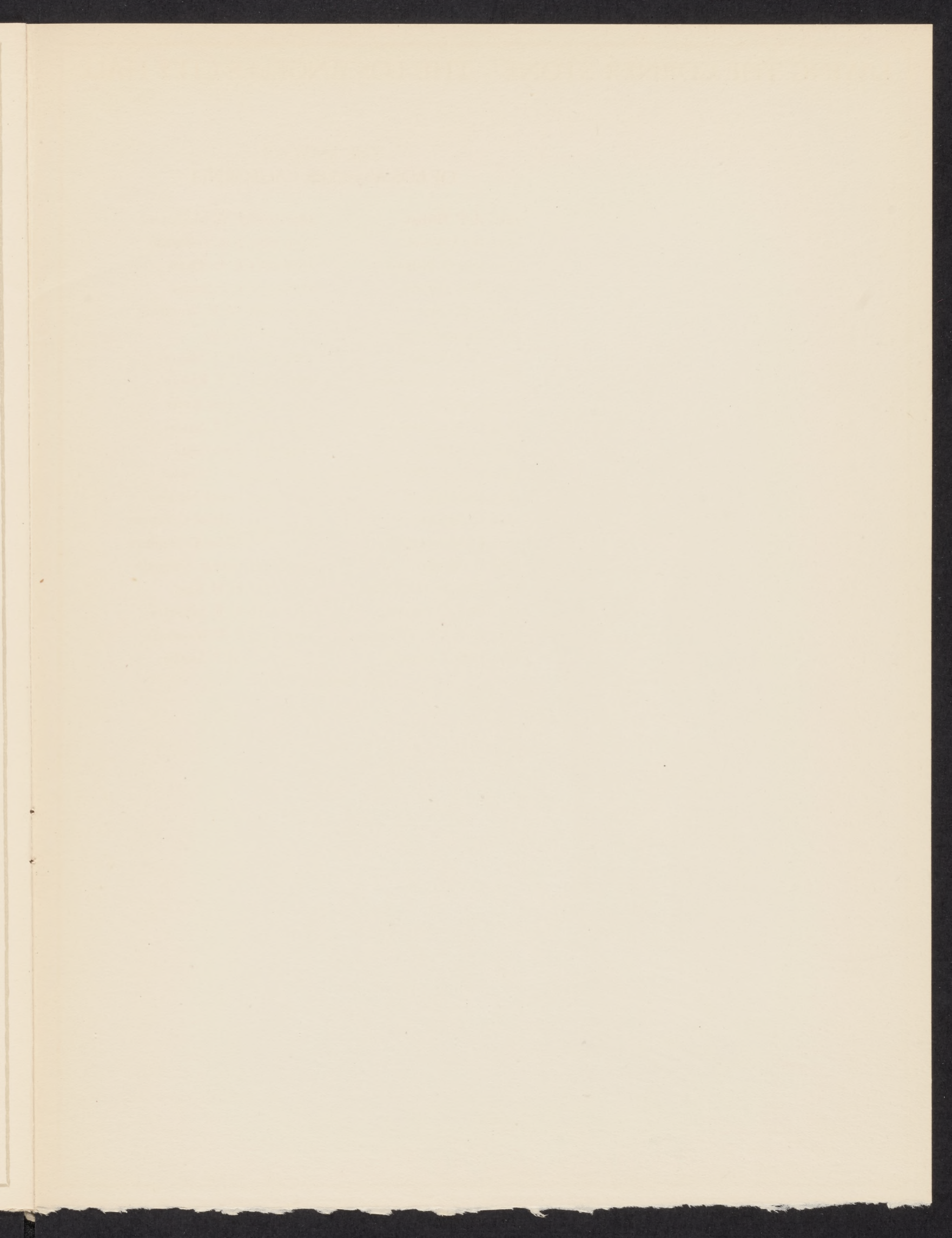


LAYING THE CORNER STONE · THE LOS ANGELES CITY HALL

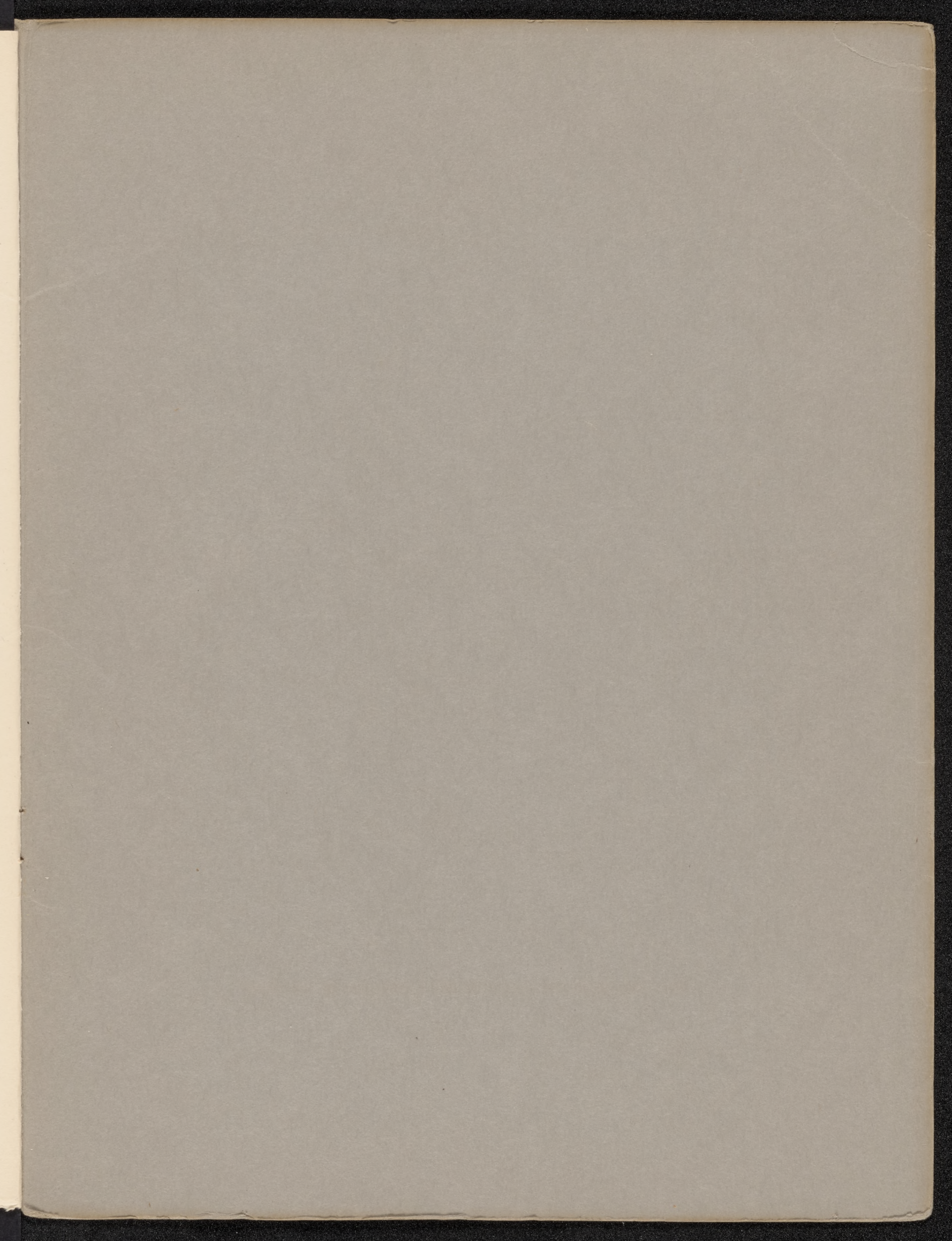
THE MAYORS OF LOS ANGELES, CALIFORNIA

1850, A. P. Hodges	1877-1878, F. A. McDougal
1851, B. D. Wilson	1879-1882, J. R. Toberman
1852, John G. Nichols	1883-1884, C. E. Thom
1853, A. F. Coronel	1885-1886, E. F. Spence
1854, S. C. Foster	1887-1888, W. H. Workman
1855, Thomas Foster	1889, John Bryson
1856 { S. C. Foster	1889-1892, H. T. Hazard
{ John G. Nichols	1893-1894, T. E. Rowan
1857-1858, John G. Nichols	1895-1896, Frank Rader
1859, D. Marchessault	1897-1899, M. P. Snyder
1860, H. Mellus	1899-1900, Fred Eaton
1861-1864, D. Marchessault	1901-1905, M. P. Snyder
1865, Jose Mascarel	1905-1907, Owen McAleer
1866, C. Aguilar	1907-1909 { Arthur C. Harper
1867, D. Marchessault	{ Wm. D. Stephens
1868, C. Aguilar	1909-1913, George Alexander
1869-1870, Joel H. Turner	1913-1915, H. H. Rose
1871-1872, C. Aguilar	1915-1916, C. E. Sebastian
1873-1874, J. R. Toberman	1916-1919, F. T. Woodman
1875-1876, P. Beaudry	1919-1921, M. P. Snyder
	1921, George E. Cryer





Plan, Typography and Printing by The Fred S. Lang Company, Los Angeles



VH.T. BR. 0086