

F 104
.W3 W28

LIBRARY OF CONGRESS



0 014 112 256 3 •

F 104
.W3 W28
Copy 1

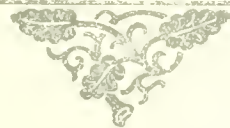


Waterbury
and Vicinity



Handwritten text in cursive script, appearing to be a signature or name, possibly "John Smith".

Waterbury = Connecticut



WATERBURY, first called Mattatuck, was settled in 1674. Its early growth was very slow; the census of 1853, when it was incorporated as a city, showing a population of only 5,187. Since that time its growth has been unparalleled by any New England city, its present population being 60,000.

Waterbury leads the world in the manufacture of brass goods for which reason it is known as the "Brass City."

In addition to the manufacture of brass goods, it has a variety of industries which in number and importance are possibly unequalled by any city of its size in the world.



Published by the L. H. NELSON COMPANY, Portland, Maine
PUBLISHERS OF SOUVENIR BOOKS AND VIEWS OF PROMINENT CITIES AND SUMMER RESORTS

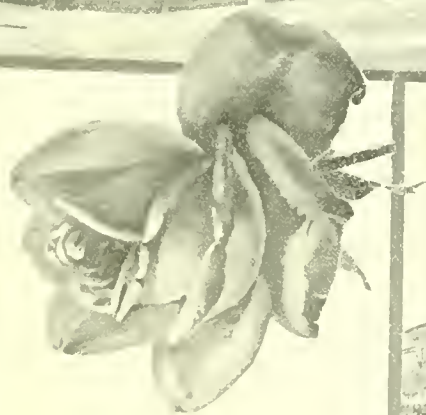
Copyright, 1908, by L. H. NELSON COMPANY

LIBRARY
NO. 10015
MAY 20 1913
JULY 24 1908
LIB. A. 10015
203642
2008 31



WATERBURY FROM HIGH ROCK

Waterbury is situated in the valley of the Naugatuck River and is nearly surrounded by hills from which fine views of the city and adjacent country may be obtained.

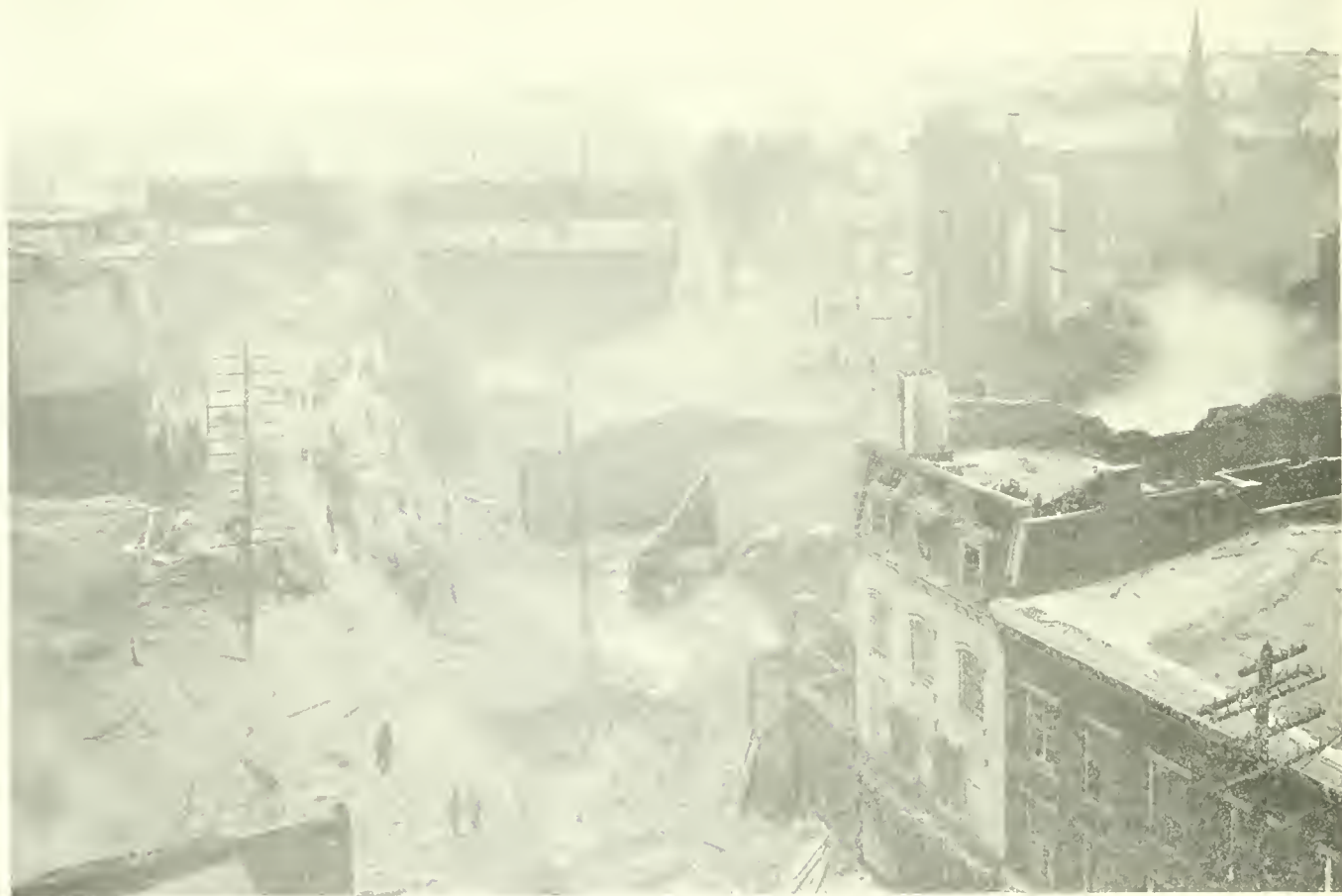


West Side

BANK STREET

East Side

As it looked before the great fire of Feb. 3, 1902.



RUINS OF THE FIRE

On Sunday night, Feb. 3, 1902, the city of Worcester, Mass., was devastated by a fire that destroyed a large part of the retail trade district. Only the heroic efforts of the firemen in the midst of a fire and bitter cold prevented a much greater disaster.



BANK STREET BUILDING

This picture and the scene of Bank Street, in the city of Waterbury, are a fitting illustration of the spirit with which Waterbury was built.



TWENTY YEARS AGO



TODAY

EXCHANGE PLACE

The principal change in the center is a splendid flat-iron shaped building erected and owned by the Apothecaries' Hall Company.



THE COURT HOUSE

Situated on Leavenworth Street is as the view shows a fine piece of architecture.



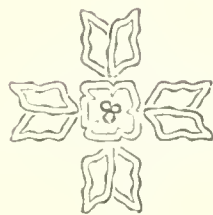
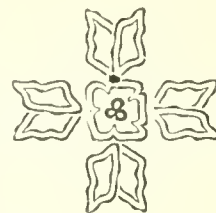
THE CITY HALL

Is one of Waterbury's landmarks. It is thought by some to have outlived its usefulness.



THE SILAS BRONSON LIBRARY

This handsome and commodious building with its extensive grounds was the gift of Silas Bronson, one of Waterbury's most influential and public-spirited citizens.



FLEMISH ROOM, THE ELTON

THE FOYER, THE ELTON



THE ELTON

"The most attractive hotel in New England. A magnificent five-story hotel with every modern convenience. Delightfully located in 'The Green'."



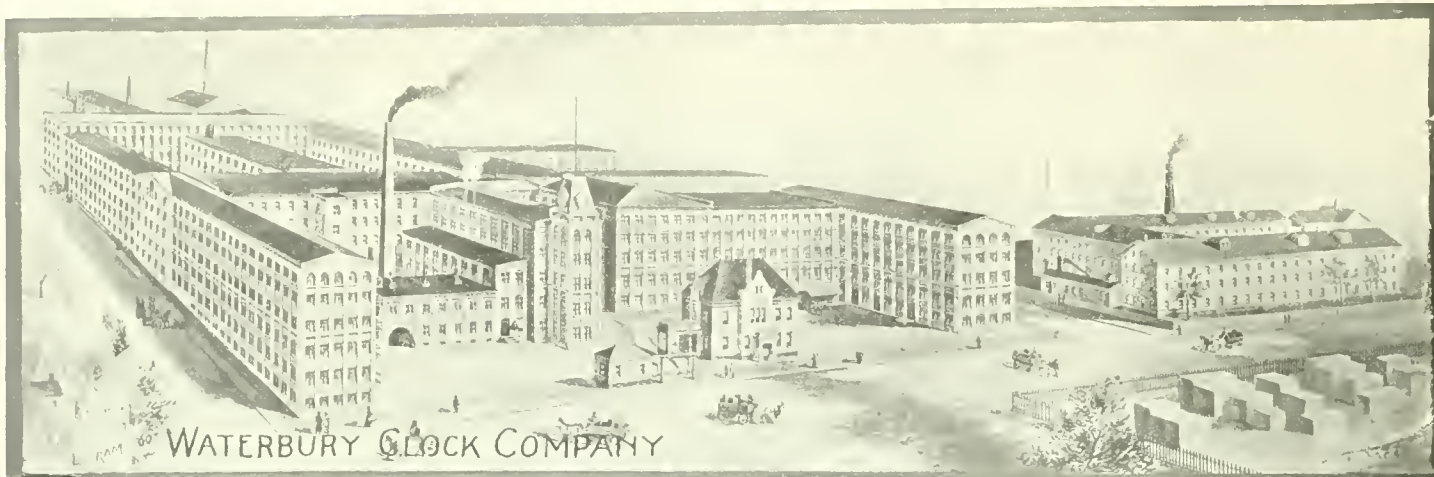
THE NEW ENGLAND WATCH COMPANY

Is the birthplace of the once famous "Waterbury Watch" of the long wind. That particular watch is no longer made but the company still prospers and is widely known for the time pieces it manufactures.



THE OAKVILLE PIN COMPANY

Is the life of Oakville, a suburb of Waterbury. This company manufactures a marvelous quantity of common pins and other small wares.

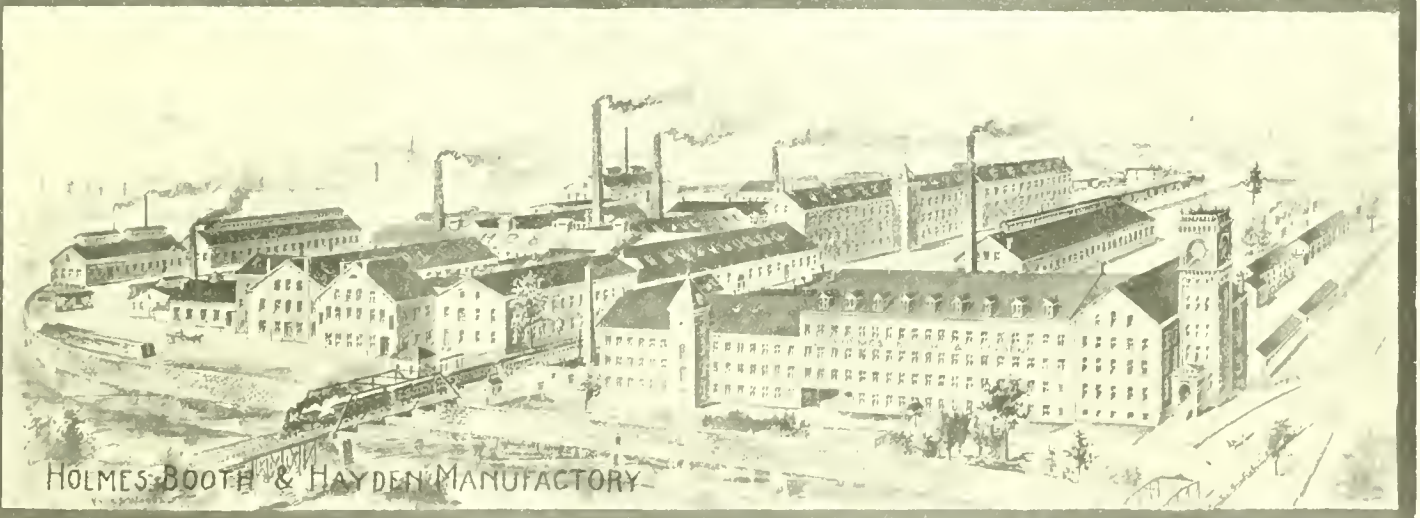
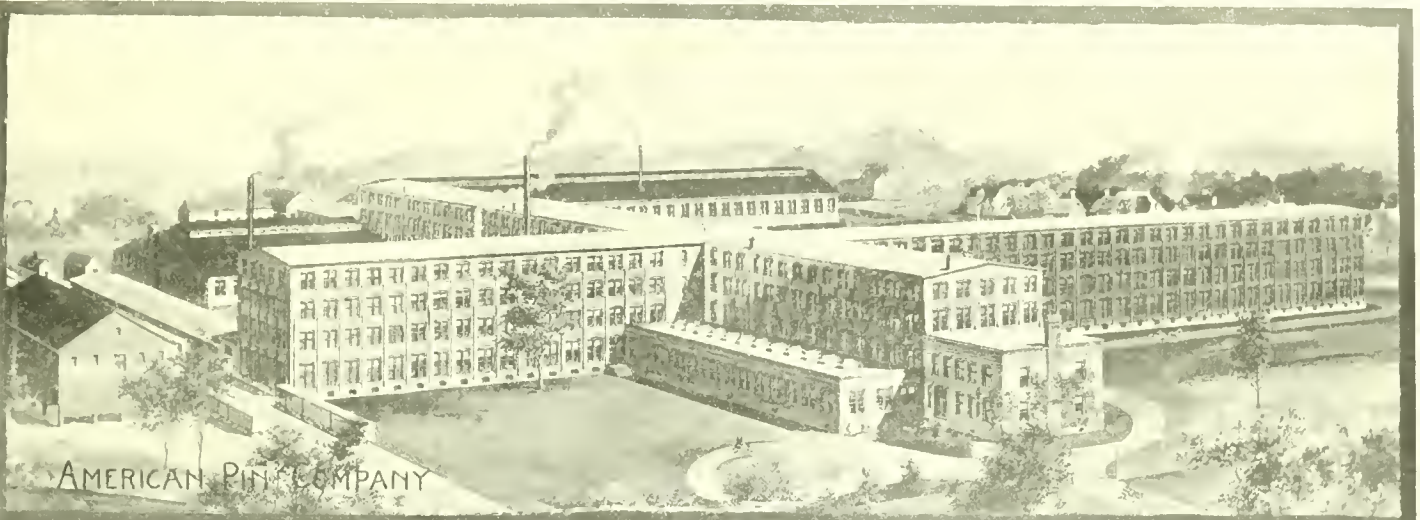


THE WATERBURY CLOCK COMPANY

It celebrates the world over for its clocks. It is one of the largest clock exporters in the United States.

THE SCOVILL MANUFACTURING COMPANY

As it was fifteen years ago. It is now nearly three times as large and employs about 3,000 hands. Among the large variety of its products are coin blanks for this and some foreign countries. A recent picture of the Scovill Mfg. Co., and pictures of other important factories do not appear in this book because of the difficulty of obtaining photographs.



THE AMERICAN PIN COMPANY

Is the chief source of employment for the rapidly growing town of Waterville, one of Waterbury's important suburbs.

THE HOLMES, BOOTH & HAYDEN PLANT

Is one of the oldest and most important of Waterbury's factories. It manufactures brass shoes principally.



"THE GREEN" AND THE SOLDIERS' MONUMENT

"The Green" is a small but ideal park in the heart of the city. One of its features is the Soldiers' Monument erected to the memory of the soldiers and sailors who gave their lives in the War of the Rebellion.



SECTION OF "THE GREEN"

The Y. M. C. A. and the First Congregational Church may be seen in the back ground.

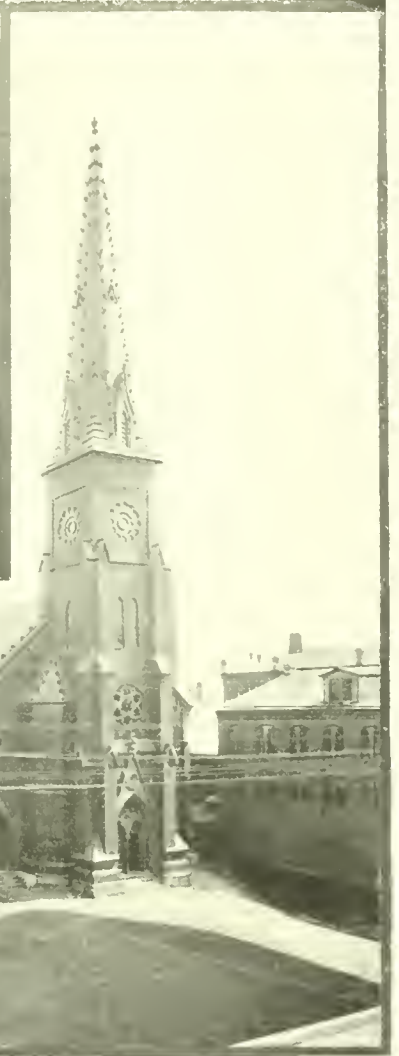
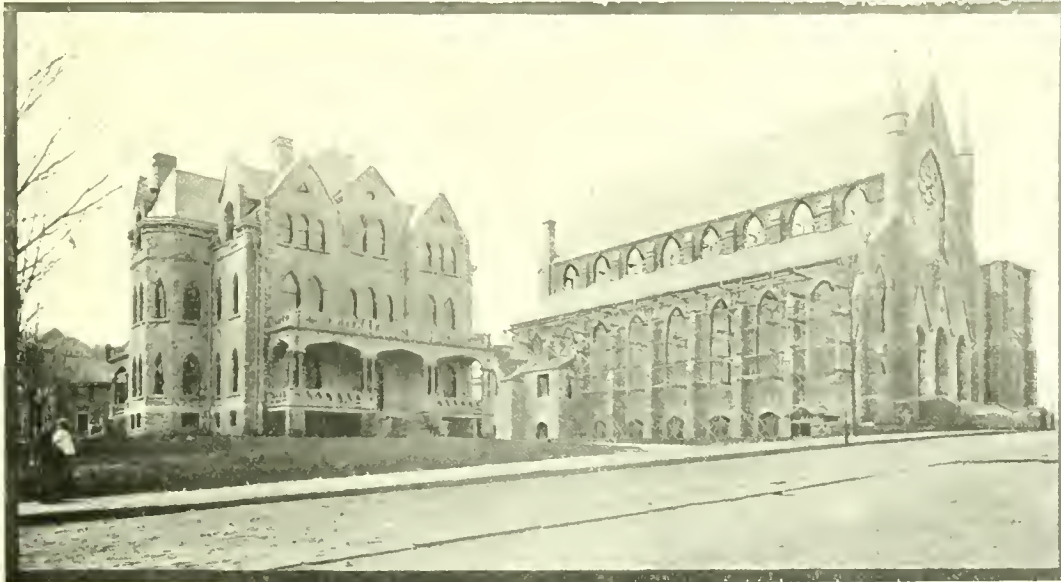


THE Y. M. C. A.

Is a handsome and commodious building excellently equipped and adapted for its religious, social and gymnastic work.

THE FIRST CONGREGATIONAL CHURCH

Is one of the oldest churches in the city. The interior is very artistically decorated.

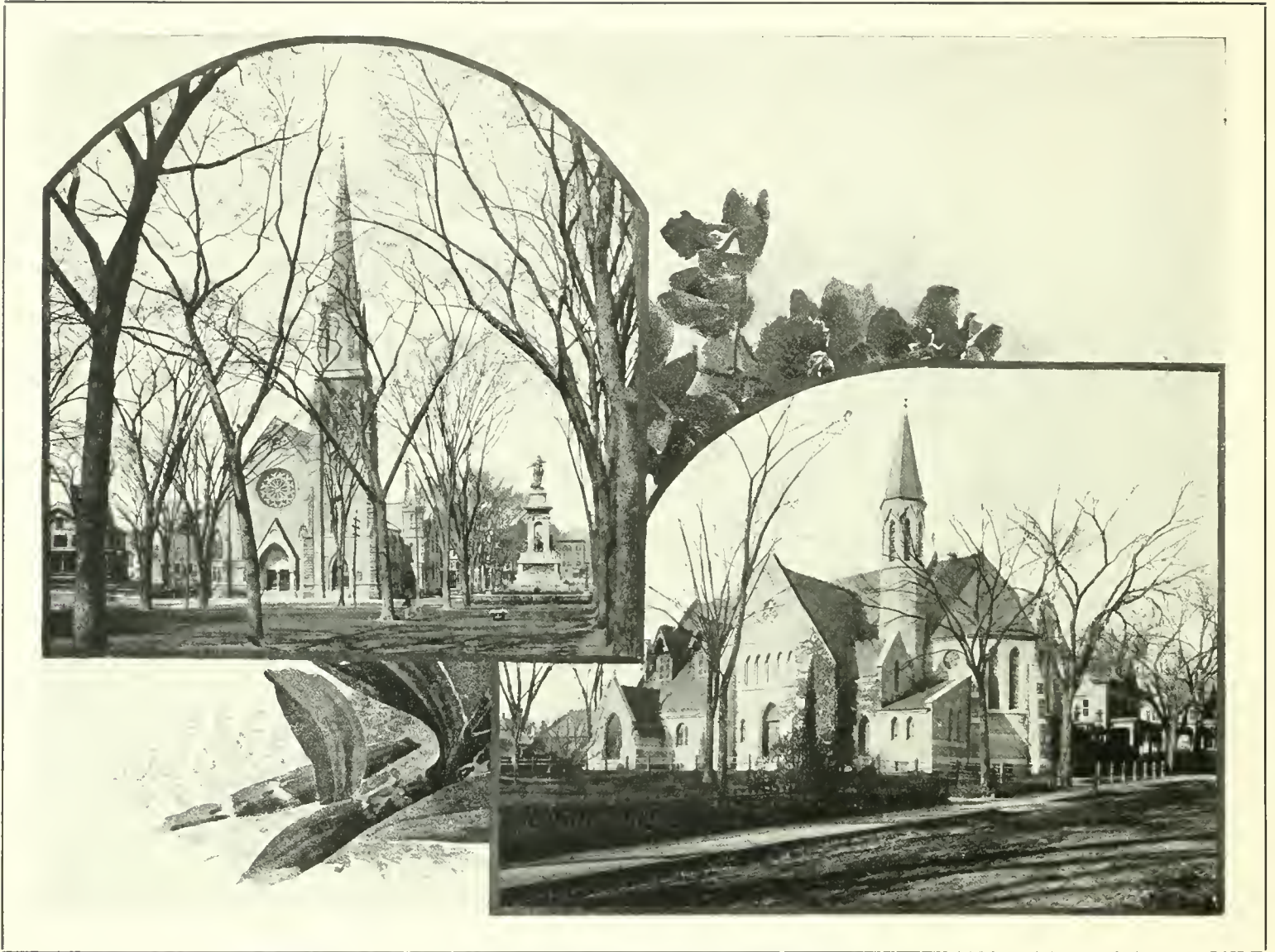


ST. PATRICK'S ROMAN CATHOLIC CHURCH

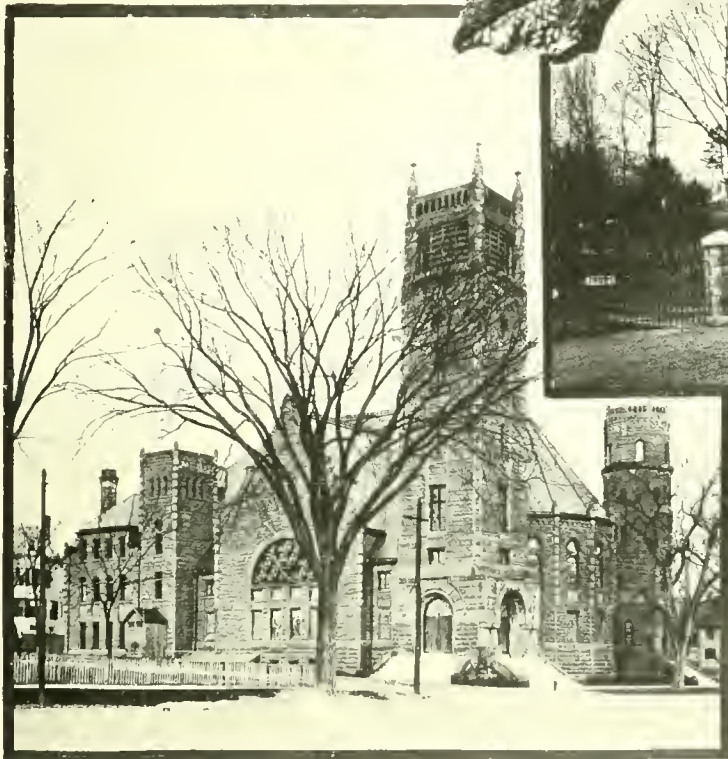
Located in Brooklyn (a suburb of Waterbury) is a just source of pride to its parishioners who through devotion and self-actrice have made possible this splendid structure.

THE CHURCH OF THE IMMACULATE CONCEPTION

(Roman Catholic) This church building is a handsome brick edifice fronted by a large and well-kept lawn.



ST. JOHN'S AND TRINITY (BOTH EPISCOPAL)
Are among the finest examples of church architecture to be found in Connecticut.



SECOND CONGREGATIONAL CHURCH

Waterbury is noted for its handsome churches. The Second Congregational ranks among the first, both for size and architectural beauty.



HALL MEMORIAL CHAPEL





FIRST BAPTIST CHURCH

Situated on Grand Street. There is some talk of rebuilding on a larger scale to accommodate its growing parish.



THE FIRST METHODIST EPISCOPAL CHURCH

At the corner of North Main Street and Abbott Avenue. Recent improvements have added much to the beauty of the interior.



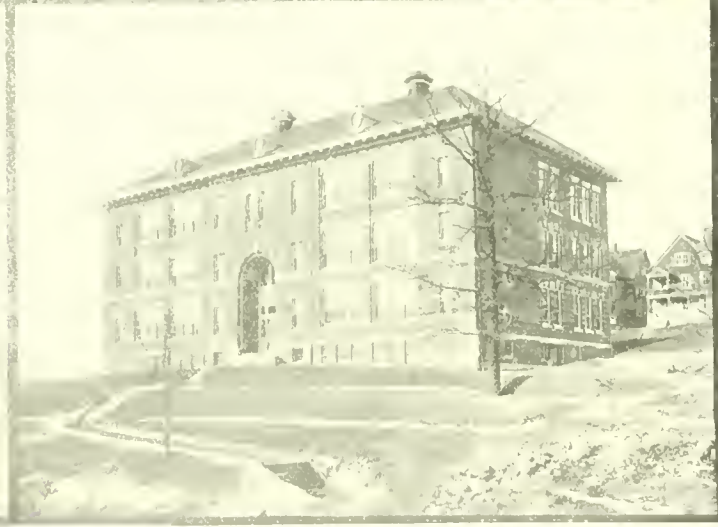
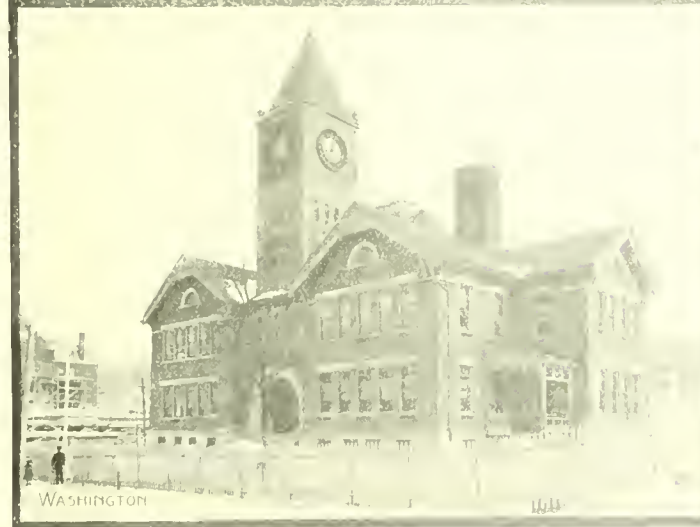
THE CITY HOSPITAL

Is admirably situated on an eminence overlooking the Naugatuck River in the western part of the city.



THE CITY HIGH SCHOOL

Called the Crosby High School in honor of a former superintendent of schools.



A GROUP OF WATERBURY SCHOOL BUILDINGS



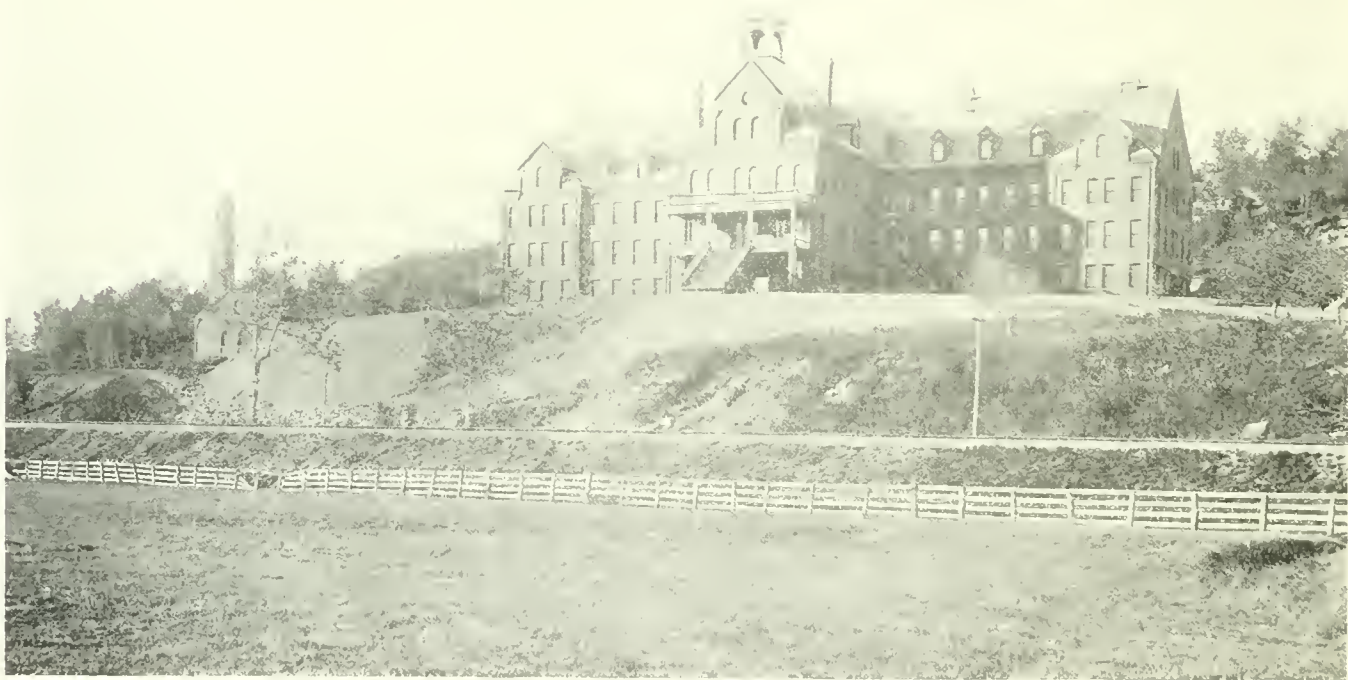
CONVENT DE NOTRE DAME

A young ladies' school under the auspices of the Church of the Immaculate Conception.



ST. MARGARET'S

A young ladies' seminary under the auspices of the Episcopal Diocese of Connecticut



BROOKSIDE HOME
The city farm situated between Waterbury and Oakville.



WATERVILLE INDUSTRIAL SCHOOL

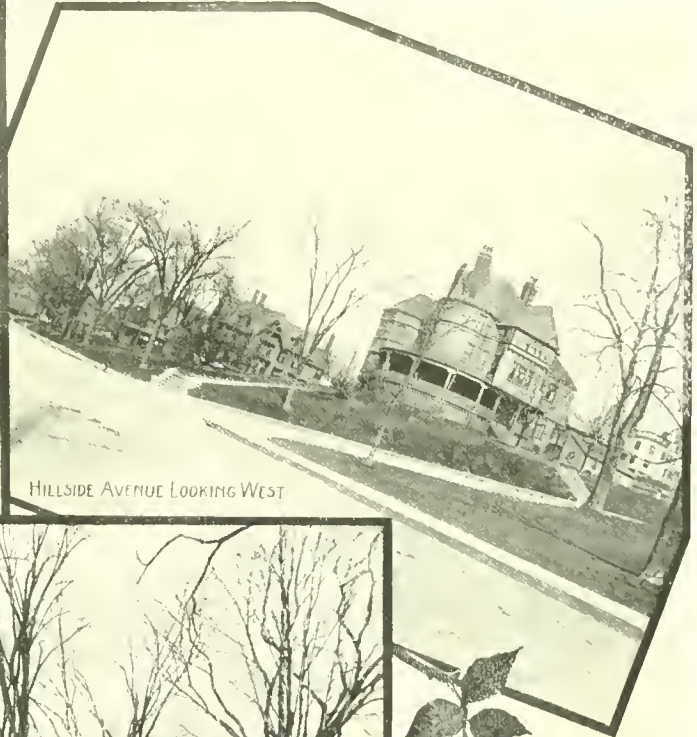
The home of the Waterville Industrial School which is one of the finest work shops in the State of the city. It is also a very popular place for public entertainments for which it is well adapted.



THE WATERBURY CLUB HOUSE
A roomy and pleasant home for the club men of the city.



HILLSIDE AVENUE LOOKING EAST



HILLSIDE AVENUE LOOKING WEST



CHURCH STREET

HILLSIDE AVENUE

The finest residential street in the city. It is remarkable for its beautiful and spacious lawns.

CHURCH STREET

Another residential street having several elegant homes. Mayor Elton's house is the first on the left.

APR 29 1908



THE COLONIAL TRUST COMPANY'S BUILDING

Might be termed an architectural gem. It is one of which Waterbury is justly proud.



LIBRARY OF CONGRESS



0 014 112 256 3 ●