

## Historic, archived document

Do not assume content reflects current scientific knowledge, policies, or practices.



62.09

1950

# GERMAIN'S

*Horticultural Specialists Since 1871*

LOS ANGELES, CALIFORNIA

LIBRARY  
RECEIVED  
★ JUN 21 1950 ★  
U. S. Department of Agriculture



CAPISTRANO  
1950  
All America Winner  
See Page 3

# GERMAIN'S *of California*

## A California Institution With a National Clientele

IN 1871, The Germain Seed and Plant Company was founded in the City of Los Angeles—one of the few pioneer firms in this city that can boast of three quarters of a century of continued progress and expansion. From a small retail store, it has become a National and International institution, shipping its products throughout the United States and to many foreign countries.

Germain's ultra-modern Retail establishment in Los Angeles' downtown business district is among the finest in America. No one should fail to visit it when in Los Angeles.

Branches patterned after the Los Angeles store are located in the following California communities: San Francisco, San Diego, Santa Maria, San Jose, Fresno, Compton, Salinas, El Monte, Watsonville, Sacramento, and Van Nuys and in Phoenix, Ariz.

At our nurseries, many acres of lath and greenhouses are devoted to the culture of orchids, flowering and foliage plants, roses and perennials. Thousands of acres in the West are devoted to the production of Germain's seeds, plants and bulbs—and are supervised by men thoroughly trained in the Horticultural profession.

This, perhaps explains why more gardeners all over America are planting Germain's seeds and horticultural products each year.

## You'll Want to Get Your ROSES, SEEDS, BULBS Direct from California

—the greatest flower growing center in the nation and as far as we know, the World We are sure that you cannot start your garden year under better auspices than by ordering California Flower seeds, plants and bulbs from Germain's.

### WE PREPAY AND GUARANTEE DELIVERY

All prices quoted in this catalogue include special packing and carrying charges. Our experts employ specialized packing methods to protect live plants in transit and assure safe delivery to your door. All shipments are sent prepaid. You pay no more than the prices shown

### WHEN MAILING US YOUR ORDER

Use the order sheet enclosed in catalogue if possible. In the space reserved for address write plainly your name, post office, nearest express office (if different from post office), County and State. Keep a duplicate copy of your order for comparison.

### REMITTANCES

Remittances may be made by Money Order, Bank Draft or Personal Check. If you remit in cash be sure to send in a Registered letter. Please send remittance in full with your order as we do not send shipments C. O. D.

### PROMPT SHIPMENT OF ORDERS

All orders entrusted to us will be carefully filled and shipped promptly or at the proper planting time. We take every precaution to supply only Plants, Bulbs and Seeds of the highest quality and guarantee safe delivery.

Germain's, Inc., Los Angeles 21, California

### Cultural Pamphlets FREE

We have available and will gladly mail free on request any of the following cultural pamphlets:

- Rose Culture.
- Bulbs for Spring Planting.
- Camellias in California.
- Flower Seed Planting Guide.
- Gladiolus Cultural Directions.
- Dahlia Culture.

General View  
Germain's Nursery



Field-View at  
Seed Ranches  
where  
Germain's  
Fine Flower  
Seeds are  
grown.

View of Salesroom  
at one of Germain's  
Stores.



Entrance to Germain's Los Angeles Store



### SAN FERNANDO VALLEY

In sunny San Fernando, California's "Valley of Roses", Germain's grow acres and acres of roses each year. Here, where climatic conditions meet their requirements almost to perfection, roses attain larger and sturdier growth and develop strong sun-ripened canes which give that satisfying burst of spring bloom for which Germain's patented roses are famous throughout the nation.



*All America Rose Selections Winners for 1950*



**THE 2 TOP** HYBRID TEA ROSE WINNERS

Also Winners Of Highest Awards At International Rose Test Gardens, Portland, Oregon.

Rosedom's highest distinction, the coveted All America Award, has been won by Germain's "Capistrano" and "Mission Bells" Hybrid Tea Roses after two years of rigid official field tests throughout the U S under all types of climatic and growing conditions



1

CAPISTRANO

(See full page illustration on front cover)



2

MISSION BELLS

(See full page illustration on back cover)

1 *Capistrano*

The outstanding All America Rose Winner of a decade in vigor of growth and beauty of color. Beautiful long tapered buds of bright cherry-red open to immense long lasting perfect blooms of clear sparkling rose-pink, borne nearly always singly on long slender stems. Capistrano produces large quantities of gorgeous blooms all season long and will truly be the treasure of your rose garden. All America Award Winner for 1950. Plant Patent Applied For.

NR007.....\$2.50 ea.; 3 for \$6.25

2 *Mission Bells*

Mission Bells, like Capistrano, excels in vigor of growth and abundance of lovely, huge blooms that often measure 5 to 6 inches across. Pointed, well formed buds of salmon pink slowly open to high centered, clear shrimp-pink flowers with a tantalizing heavy tea fragrance that fills your whole garden with lovely perfume. Truly deserving of its All America Award. Mission Bells will be your favorite too. All America Award Winner for 1950. Plant Patent Applied For.

NR079.....\$2.50 ea.; 3 for \$6.25

3 **FASHION** One of the most glorious floribunda roses of all times. Color is new to roses and can be best described as a deep glowing coral pink that lights up the garden like a neon light. The golden stamens are surrounded by graceful wavy petals. The plant is full and bushy with foliage right down to the ground. Flowers open slowly into a lovely miniature hybrid tea form and are generally borne five in a cluster.

Plant patent applied for. All America Award Winner 1950

NR025.....\$2.00 ea.; 3 for \$5.00

4 **SUTTER'S GOLD** Lovely deep burnt orange long pointed buds that are borne on long stems that are clothed with abundant green foliage. As the flowers open the color changes to a golden yellow with lines of deep orange and tawny gold radiating throughout the flower. A very pleasing fragrance is another attribute to this All America Award Winner for 1950. Plant Patent Applied For

NR122.....\$2.50 ea.; 3 for \$6.30

**All Four New All America Rose Winners**

This collection will make your rose garden complete and modern as tomorrow—All four new 1950 All America Award Winners listed on this page in Germain's strong, first grade high vitality bushes.

NR143 Complete Collection (A \$9.50 Value) for \$8.35

**79TH Anniversary Offer**

**6 Glorious Patented Roses**

All high award winners in All America Rose selections of previous years. Charlotte Armstrong, Plant Pat. 455; Grand Duchess Charlotte, Plant Pat. 774; Heart's Desire, Plant Pat. 501; Mme. Chiang Kai Shek, Plant Pat. 664; Peace, Plant Pat. 591; Taffeta, Plant Patent 716.

Entire Collection (A \$9.50 value) \$7.95

SUTTER'S GOLD



4

3



FASHION

**GERMAIN'S** AGAIN SETS THE FASHION IN

**GERMAIN'S  
OWN  
PATENTED  
ROSES**



**RENOWNED THE WORLD OVER**

YOURS TRULY

**GERMAIN'S**

**79<sup>TH</sup> Anniversary Offer**

**BIG FIVE COLLECTION**

One each of: Best Regards, San Fernando, San Gabriel, San Luis Rey, Yours Truly NR145.....(A \$9.00 Value) for \$7.25

*California's  
For Spring*

BEST REGARDS

**1** *Yours Truly* (Pat. 697)

A glorious rose with great big blooms and the longest stems you ever saw. Fully double flowers of glowing rose-pink, enhanced by a rich golden yellow tinge at the base of each petal. Inside of petals warm madder rose exceptionally double, even when fully open. Flower stems branch freely giving a wealth of bloom. As one of our customers says "Yours Truly is out of this world."

NR140.....\$1.50 ea.; 3 for \$3.75

**2** *Best Regards* (Pat. 652)

This magnificent new rose presents a strikingly beautiful color combination. A brilliant cardinal red suffuses the inside of its lovely petals, which are marked at the base with deep yellow. A coppery over-shine touches the Tyrian rose-shade of the petals' outer side. The buds are extra large, the flowers full, high centered. The plant is exceedingly vigorous, the growth strong and spreading. Be sure to include it in your order!

NR003.....\$1.50 ea.; 3 for \$3.75

**GERMAIN'S  
MODERN ROSE COLLECTION**

Six modern roses. All America Award Winners of previous years. Complete descriptions on other pages.

Charlotte Armstrong Cerise Red.....	\$1.50
Grand Duchess Charlotte Copper Scarlet	1.50
Heart's Desire Dark Red.....	1.50
Mme. Chiang Kai Shek Buttercup Yellow	1.50
Mirandy Deep Crimson.....	1.50
Peace Yellow and Pink.....	2.00

A \$9.50 Value

Collection Price \$8.50

You save over 10%

NR144



# ROSES

1



SAN LUIS REY

2



SAN GABRIEL

3



SAN FERNANDO



*Most Exotic Colors,  
Planting*



**GERMAIN'S**

**79<sup>TH</sup> Anniversary Offer**

**MISSION TRIO COLLECTION**

One each: San Fernando, San Gabriel and San Luis Rey.

NR146....(A \$6.00 Value) for \$5.00

**1 San Luis Rey** Plant Pat. 861

A veritable treasure trove of golden loveliness in full petaled blooms of matchless beauty. Long pointed buds of guinea gold opening to perfect flowers of satiny texture deepening at the base to rich cadmium yellow. Tea scented.

NR110.....\$2.00 ea.; 3 for \$5.00

**2 San Gabriel** Plant Pat. 860

Long pointed buds of glowing salmon with a heavy overlay of tangerine orange and fire red. Distinct saffron yellow at the base of each petal. As the flower opens the petals reflex, showing all the beautiful coloring. Exceptionally free flowering and long lasting. Pleasing tea fragrance.

NR109.....\$2.00 ea.; 3 for \$5.00

**3 San Fernando** Plant Pat. 785

All America Rose Selection Winner 1948. A magnificent thirty-petaled rose of glowing currant red with blooms of unusually heavy texture—proudly borne on tall erect stems—truly deserving of its All America Award. Pointed, well formed buds opening a beautiful Scarlet. Dark green, leathery foliage. So heavy is its pleasing perfume that just one bush will fill your whole garden with lovely fragrance.

NR108.....\$2.00 ea.; 3 for \$5.00

Germain's New Rose "San Fernando," All America Winner, honored during Fiesta at historic Mission San Fernando, San Fernando, California





TAFFETA

1



GERMAIN'S AGAIN SETS THE

California  
GROWN

IN AMERICA'S



CALIFORNIA  
CENTENNIAL

2



3

MARK SULLIVAN

**AUTUMN** Medium-sized buds and cupped double flowers. Burnt orange streaked with red. Dark glossy green foliage.

NR001.....\$1.00 ea.; 3 for \$2.75

**BABY CHATEAU** Semi-double flowers of deep velvety red, borne in large clusters.

NR002.....\$1.25 ea.; 3 for \$3.25

**BETTY PRIOR** (Pat. 340) Large branching clusters of single blooms resembling dogwood in shape and color.

NR004.....\$1.25 ea.; 3 for \$3.25

**2 CALIFORNIA CENTENNIAL** (Pat. Rts. Res.) Strong stems eighteen inches or more in length, crowned with long, spiral crimson buds of elegant texture. Gives a wealth of beautiful roses throughout the entire season. Very fragrant.

NR015.....\$2.00 ea.; 3 for \$5.00

**CHATTER** (Pat. 739) A vivid bright crimson Floribunda type with beautiful velvety petals.

NR005.....\$1.25 ea.; 3 for \$3.25

**CHRISTOPHER STONE** Lovely, long-pointed buds open to vivid scarlet blooms with a dusky nap of crimson.

NR008.....\$1.25 ea.; 3 for \$3.25

**CONTRAST** A bicolor of contrasting tones. Upper surface of petals soft rose, underside white with gold suffusion.

NR011.....\$1.00 ea.; 3 for \$2.75

**4 CRIMSON GLORY** (Pat. 105) A superb deep, crimson red rose that ranks with the best. Exceedingly fragrant and produces large crops of flowers on strong spreading plants. A grand rose for cutting.

NR012.....\$1.35 ea.; 3 for \$3.60

**CRIMSON ROSETTE (P.A.F.)** Deep crimson buds produced in large clusters make this a much wanted variety for bedding or hedges. Last for many days when cut.

NR014.....\$1.50 ea.; 3 for \$3.75

**DEBONAIR** (Pat. 677) Color a deep vivid yellow, showy at all stages of bloom.

NR007.....\$1.50 ea.; 3 for \$3.75

**DONALD PRIOR** (Pat. 377) This sparkling red twelve petaled variety is an excellent mate for Betty Prior. A prolific bloomer with large, shiny foliage.

NR013.....\$1.25 ea.; 3 for \$3.25

**E. G. HILL** The flower is scarlet shading to deeper pure red as it develops. Unusually good keeper.

NR020.....\$1.00 ea.; 3 for \$2.75

**6 ECLIPSE** (Pat. 172). Long streamlined buds of clear golden yellow. Erect, strong growing free-flowering plants.

NR022.....\$1.35 ea.; 3 for \$3.60

**FEU JOSEPH LOOYMANS** Long pointed buds of tangerine yellow with a vivid apricot center.

NR027.....\$1.00 ea.; 3 for \$2.75

**FLORADORA** The gayest floribunda of them all. Color a bright cinnabar red. Flowers borne on sprays of six to twelve blooms.

NR029.....\$1.25 ea.; 3 for \$3.25

**7 FORTY-NINER** (Pat. 792) One of the most brilliantly colored roses ever introduced. A combination of Orient red and straw yellow that is very spectacular. Winner of the All-America Award for 1949.

NR028.....\$2.00 ea.; 3 for \$5.00

**FRAU KARL DRUSCHKI** Buds open to huge flowers of snowy white. An extremely vigorous grower and very hardy.

NR031.....\$1.00 ea.; 3 for \$2.75

**FRED EDMUNDS** (Pat. 731). Winner of 1944 All-America Regional Award. Burnt-orange buds open to glorious, 25 petaled blooms of vivid, glowing coppery orange color.

NR030.....\$1.50 ea.; 3 for \$3.75

CRIMSON GLORY

4

© J. & P. CO.





**FASHION IN ROSES**

*Roses...*

**LOVELIEST ROSE COLORS**



6

ECLIPSE



7

FORTY-NINER

**GIRONA** Beautifully colored in various tones of pink, carmine and yellow, varying with the weather but always lovely.

NR035.....\$1.00 ea.; 3 for \$2.75

**HADLEY** A rich glorious red shading to velvety purple. Flowers exceedingly fragrant.

NR039.....\$1.00 ea.; 3 for \$2.75

**IMPROVED LAFAYETTE** Medium sized deep glowing red flowers. Blooms profusely. Florabunda type.

NR047.....\$1.00 ea.; 3 for \$2.75

**J. OTTO THILOW** The buds of this variety have just about the most perfect form of any rose. Color is rose-pink.

NR049.....\$1.00 ea.; 3 for \$2.75

**JOANNA HILL** Large buds and blooms of a delicate shade of golden yellow, deepening toward the center.

NR052.....\$1.00 ea.; 3 for \$2.75

**K. A. VICTORIA** Pure ivory white, producing quantities of beautiful buds and full flowers.

NR054.....\$1.00 ea.; 3 for \$2.75

**LOS ANGELES** You'll like this world-renowned "Gold Medal" variety. Rich flame pink shading to apricot and yellow.

NR060.....\$1.00 ea.; 3 for \$2.75

**MARK SULLIVAN** (Pat. 599). This gorgeously colored rose has a base color of golden-yellow, shaded with deep rose-pink and cerise.

NR069.....\$1.50 ea.; 3 for \$3.75

**McGREY'S YELLOW** Yellow rose enthusiasts rave about this one. A lovely uniform shade of buttercup yellow.

NR075.....\$1.00 ea.; 3 for \$2.75

**MING TOY** (Pat. Applied For) A new polyantha Rose. Its brilliant rose color and form resemble the finest Camellia.

NR077.....\$1.50 ea.; 3 for \$3.75

**8 MIRANDY** (Pat. 632). The All-America winner for 1945. Rich deep dark red with black shadings.

NR076.....\$1.50 ea.; 3 for \$3.75

**MME. HENRI GUILLOT** (Plant Pat. 337). The large, firm petals open slowly and each richly fragrant flower of shining raspberry-pink color is held erect above the large, glossy foliage.

NR067.....\$1.50 ea.; 3 for \$3.75

**MRS. PIERRE S. DUPONT** 2-foot plant, thickly covered with luxuriant, glossy green foliage and golden yellow buds, heavy with fragrance.

NR080.....\$1.00 ea.; 3 for \$2.75

**MRS. SAM McGREY** This wonderful rose is a beautiful copper-orange in color, heavily flushed with Lincoln-red.

NR081.....\$1.25 ea.; 3 for \$3.25

**5 NOCTURNE** (Pat. 713) Bright cardinal-red with intriguing darker shades of Chrysanthemum-crimson, richly textured, and pleasantly fragrant.

NR083.....\$1.50 ea.; 3 for \$3.75

**ORANGE TRIUMPH** Magnificent scarlet orange blooms borne in enormous clusters. Polyantha type.

NR085.....\$1.00 ea.; 3 for \$2.75

**9 PEACE** (Pat. 591) Big canary yellow buds open to five-inch flowers that turn to alabaster white with picote cerise edges.

NR086.....\$2.00 ea.; 3 for \$5.00

**1 TAFFETA** (Pat. 716) Perfectly formed, fragrant buds in the rich pink and salmon tones, lovely changeable coloring, very pronounced fragrance.

NR128.....\$1.50 ea.; 3 for \$3.75

MIRANDY



8



NOCTURNE

5



PEACE

9

COUNTESS VANDAL



*From California Comes*

**AMERICA'S FINEST ROSES**



**1 COUNTESS VANDAL** (Pat. 38) Long pointed bud, distinctive shading of coppery bronze, suffused with soft gold. One of the most popular roses, because of its beauty and abundant bloom.  
NR010.....\$1.35 ea.; 3 for \$3.60

**7 CHARLOTTE ARMSTRONG** (Pat. 455) Lovely pointed buds of spectrum-red open to flowers of brilliant rose-pink.  
NR006.....\$1.50 ea.; 3 for \$3.75

**9 GRAND DUCHESS CHARLOTTE** (Pat. 774) A color unknown in any other Rose. Buds are glowing morocco-red and open to blooms of dusky coral-red.  
NR038.....\$1.50 ea.; 3 for \$3.75

**5 HEART'S DESIRE** (Pat. 501) Vigorous grower and not affected by the hot sun. Heart's Desire with its great red blooms is just what the name implies. Has size and rich fragrance.  
NR042.....\$1.50 ea.; 3 for \$3.75

**10 KATHERINE T. MARSHALL** (Pat. 607) A lovely bloom of warm, glowing, clear pink, heavy textured, forming a magnificent bud and half-open bloom, with a rich fruity fragrance. If you like your buds and flowers large and robust, your plants tall and your stems extra heavy, you'll like this one.  
NR056.....\$1.50 ea.; 3 for \$3.75

**4 LOWELL THOMAS** (Pat. 595) The twenty-five petaled blooms over four inches across when fully opened. Rich yellow, carried on strong straight stems. Slight tea fragrance.  
NR062.....\$1.50 ea.; 3 for \$3.75

**6 MME. CHIANG KAI SHEK** (Pat. 664) Long shapely buds opening into lovely, full petaled flowers of exquisite fragrance. A buttercup shade changing to a soft creamy yellow. Extra long stems.  
NR066.....\$1.50 ea.; 3 for \$3.75

**PINK DAWN** Produces a fragrant abundance of full, double flowers, opening to lovely pink blooms tinted with orange at the base.  
NR091.....\$1.00 ea.; 3 for \$2.75

**3 PINOCCHIO** (Pat. 484) Extremely hardy and easy to grow. Literally covered from Spring to frost with great quantities of beautiful buds which are salmon-pink flushed with gold. Used by leading florists for corsages and bouquets. A wonderful rose hedge.  
NR095.....\$1.25 ea.; 3 for \$3.25

**POINSETTIA** Scarlet, red blooms of an unusual shade. Color resembles the Poinsettia from which it gets its name.  
NR097.....\$1.00 ea.; 3 for \$2.75

**RED RIPPLES** Clear bright red in bud and bloom. Wavy petaled flowers come in large masses. Very prolific. Florabunda.  
NR101.....\$1.00 ea.; 3 for \$2.75

**ROSE ELFE** Graceful clusters of dainty La France pink flowers superbly suited for cutting and table decoration. Holds color well.  
NR105.....\$1.00 ea.; 3 for \$2.75

**SANTA ANITA** (Pat. 539) An even shade of deep pink. Flowers are produced lavishly and the plants are literally covered with bloom.  
NR111.....\$1.25 ea.; 3 for \$3.25

**SIGNORA** (Plant Patent No. 201) A real masterpiece in both plant and bloom. Long bud of a warm burnt sienna opening to a lighter hue toward mandarin, with every bloom on a long stem.  
NR115.....\$1.35 ea.; 3 for \$3.60

**SNOWBIRD** One of the most prolific bedding Roses. Fragrant, perfectly-formed, pure white blooms, often 4 inches across.  
NR117.....\$1.25 ea.; 3 for \$3.25

**2 TALLYHO** (Pat. 828) Inside the petals are a delightful shade of pink, the outside varies from cardinal red to soft crimson. Pleasing fragrance. Strong grower.  
NR124.....\$2.00 ea.; 3 for \$5.00

**TANGO** A unique shade of ivory becoming golden towards the base. The inside of the petals vermilion-scarlet. Spicy fragrance. As colorful as a Spanish shawl.  
NR126.....\$1.25 ea.; 3 for \$3.25

**TEXAS CENTENNIAL** (Pat. 162) Has the same remarkably strong growth as Hoover in a rich red, at times the color is rosy cerise.  
NR127.....\$1.25 ea.; 3 for \$3.25

**THE DOCTOR** We regard this rose as one of the best; buds long and pointed, expand to a simply enormous bloom; exquisite silvery pink, uniform in color, fragrance so intense that it can be detected many yards away.  
NR130.....\$1.25 ea.; 3 for \$3.25

**8 TOM BRENNEMAN (P.R.R.)** Named in honor of the late radio personality. Beautiful coral-rose, borne on strong stems. Exceptionally large size. Fragrance is intense.  
NR129.....\$2.00 ea.; 3 for \$5.00

**VILLE DE PARIS** Holds its color better than any other yellow rose, quantities of slender sunflower yellow buds for cutting.  
NR134.....\$1.00 ea.; 3 for \$2.75

TALLYHO



2

3

PINOCCHIO



4

LOWELL THOMAS



5



HEART'S DESIRE

8



TOM BRENNEMAN

6



MME. CHIANG KAI SHEK

**GERMAIN'S**  
**79<sup>TH</sup> Anniversary Offer**  
**Top Value Collection**  
 One each of the following varieties  
 (for description see other rose pages):  
 Autumn, Contrast, Girona, Hadley,  
 Mrs. P. S. DuPont and Pink Dawn.  
 (A \$6.00 value) ..... \$5.49  
 NR147

9



GRAND DUCHESS CHARLOTTE



7



CHARLOTTE ARMSTRONG



10



KATHERINE T. MARSHALL





FLORADORA

**GERMAIN'S**

*79<sup>th</sup> Anniversary Special  
Collection Offers*

**BEDDING ROSE COLLECTION**

A collection made up of florabunda and polyantha type roses which will give you a very showy garden all through the blooming season. Just the thing for the maximum amount of color in the minimum amount of space.

One each of the following Baby Chateau, Floradora, improved Lafayette, Orange Triumph and Rose Elfe.

NR148.....\$4.95 (A \$5.50 Value)

See other Rose pages for complete descriptions.

**GERMAIN'S  
PATENT ROSE COLLECTION**

One each of the following outstanding Germain patented roses: Capistrano, Mission Bells, Best Regards, San Fernando, San Gabriel, San Luis Rey, and Yours Truly. NR149 Collection, one each of all seven. For \$11.65 A \$14.00 Value

**GERMAIN'S  
FAMOUS COLLECTION**

**CONDESSA DE SASTAGO** (Lower right) Two-toned. Deep golden outside, copper-rose and scarlet on the inside. NR009.....\$1.00

**DUQUESSA DE PENERANDA** (Center right) Orange apricot with deeper coppery tones. Huge pointed buds are double. NR019.....\$1.00

**ETOILE DE HOLLAND** (Top right) Brilliant red blooms of large size. Perfect in half open state. One of the best reds. NR023.....\$1.25

**McGREY'S IVORY** Ivory white, lovely and delicate in texture. NR071.....\$1.25

**MRS. E. P. THOM** Deep yellow. Glossy disease resisting foliage. NR078.....\$1.00

**NIGHT** One of the darkest of all roses, deep dramatic crimson-shaded black and maroon. NR082.....\$1.25

**PICTURE** (Top left) Every bud perfectly formed. A cheerful glowing shade of light rose-pink. NR089.....\$1.00

**PRES. HOOVER** (Lower left) A combination of cerise-pink, flame-scarlet and yellow. NR099.....\$1.00

**ROSE MARIE** The buds are long and pointed. Color a delightful pure rose pink. NR106.....\$1.00

**SISTER THERESE** (Center left) Buds are chrome yellow, heavily marked with carmine. NR114.....\$1.00

**SOUTHPORT** A brilliant, unshaded scarlet. Particularly brilliant in bright sunshine. NR120.....\$1.00

**TALISMAN** A combination of gold, apricot, yellow, deep pink and old rose. NR125.....\$1.00

Any \$1.25 Rose on this page, 3 for \$3.25

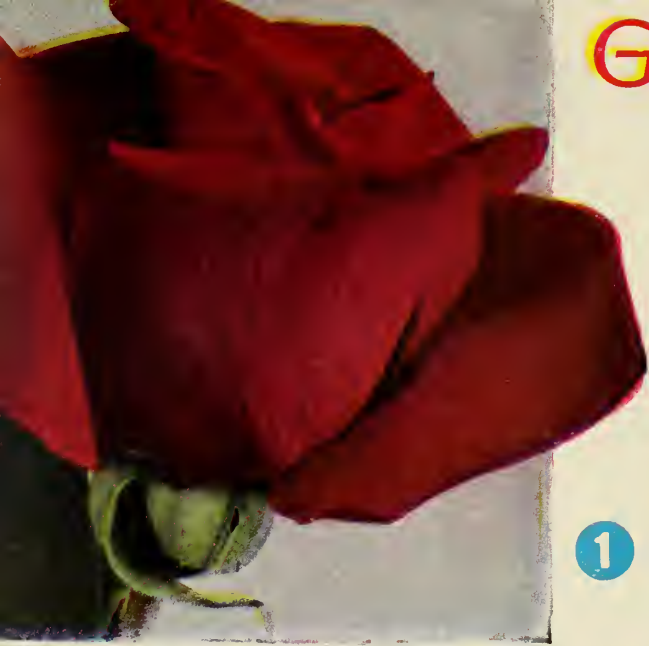
Any \$1.00 Rose on this page, 3 for \$2.75

**GERMAIN'S  
FAMOUS DOZEN COLLECTION**

Collection of twelve varieties listed on this page. (A \$12.75 value) sent anywhere in the United States. Roses listed above may be purchased separately.

NR142.....\$10.00 Postpaid





CL. HEART'S DESIRE

1

*Climbing Roses*  
*For A Riot of Color!*  
**ON TRELLISES,  
ARBORS AND FENCES**



CL. PICTURE

2

**CL. BLAZE** (Pat. 10) One of the hardest climbing varieties. A vivid glowing scarlet that practically covers the plant all through the season.  
NR152.....\$1.50, 3 for \$3.75

**3 CL. CRIMSON GLORY** (Pat. 736) This variety produces the same dark crimson blooms that the bush variety does.  
NR158.....\$1.50, 3 for \$3.75

**4 CL. PEACE** No bush rose ever has created the amount of interest that Peace did. Now in climbing form with the same glorious yellow flowers with the pink picotee edges.  
Stock Limited. NR182.....\$2.00, 3 for \$5.00

**CL. BELLE OF PORTUGAL** Large pearl pink blooms of unusual beauty. Recommended for Pacific Coast and South. NR150.....\$1.25, 3 for \$3.25

**CL. CECIL BRUNNER** A climbing form of the well-known lush variety. A rampant grower that produces masses of the same salmon baby roses.  
NR154.....\$1.25, 3 for \$3.25

**CL. CONDESSA DE SASTAGO** This picturesque variety is now available in a Climber. Long stemmed flowers of orange scarlet and intense bright yellow.  
NR156.....\$1.25, 3 for \$3.25

**CL. COUNTESS VANDAL** We regard it as one of the finest climbers. Salmon-pink heavily shaded with copper and gold tones. Richly perfumed.  
NR157.....\$1.25, 3 for \$3.25

**CL. ETOILE DE HOLLAND** We rank this variety as just about tops in climbing hybrid tea roses. Big blooms of vivid dark red. It fairly shines when in bloom.  
NR161.....\$1.25, 3 for \$3.25

**CL. HADLEY** Dark velvety red blooms that are very fragrant. Foliage is dark green and plentiful.  
NR167.....\$1.25, 3 for \$3.25

**1 CL. HEART'S DESIRE** (Pat. 663) Great, dark red blooms of fine form and texture. Vigorous grower. Exceedingly fragrant.  
NR169.....\$1.50, 3 for \$3.75

**CL. KAISERIN VICTORIA** Plants bloom throughout the season and the lovely white flowers are magnificent. NR171.....\$1.25, 3 for \$3.25

**CL. MCGREY'S YELLOW** An excellent yellow climber producing a wealth of blossoms.  
NR174.....\$1.25, 3 for \$3.25

**CL. MRS. E. P. THOM** This deep lemon yellow rose makes one of the most attractive climbers. Will produce longer stems than the bush form.  
NR176.....\$1.25, 3 for \$3.25

**CL. MRS. SAM MCGREY** (Pat. 374) Outstanding for its coppery orange flowers and buds, blooms profusely the first season after planting.  
NR178.....\$1.50, 3 for \$3.75

**CL. PAUL'S SCARLET** One of the most admired red climbing roses. Large scarlet flowers on long stems. This cluster rose is a sheet of color during June.  
NR180.....\$1.25, 3 for \$3.25

**2 CL. PICTURE** (Pat. 524) Long stemmed, perfectly formed buds and open flowers of clear pink with salmon undertone. Exceedingly fragrant.  
NR183.....\$1.50, 3 for \$3.75

**CL. PRES. HOOVER** A vigorous cerise-pink, flame-scarlet and yellow. Fine fragrance.  
NR185.....\$1.25, 3 for \$3.25

**CL. ROSE MARIE** A vigorous climber that is a delightful shade of pure rose pink. The buds are long and pointed. NR187.....\$1.25, 3 for \$3.25

**CL. SANTA ANITA** (Pat. applied for). The same glorious pink buds and flowers as the famous bush variety. NR188.....\$1.50, 3 for \$3.75

**CL. TALISMAN** Well-known multicolored variety. Produces great quantities of flowers in a combination of gold, apricot, yellow and old rose.  
NR189.....\$1.25, 3 for \$3.25

**CL. TEXAS CENTENNIAL** (Pat. 565). This sport of the bush variety has the same coloring which is a rich red, at times the color is rosy cerise. Long strong stems. NR190.....\$1.50, 3 for 3.75

**CL. VILLE DE PARIS** Similar to the bush variety with its glossy foliage and long pointed deep yellow buds which never fade.  
NR192.....\$1.25, 3 for \$3.25

CL. CRIMSON GLORY

3

© J. & F. CO.



CL. PEACE

4



LAVENDER BEAUTY EPIDENDRUM

*Epidendrum*

**LAVENDER BEAUTY**

A new color in the popular free-flowering orchid, a beautiful shade of lavender that is bound to please. This variety lends itself to pot culture in that it is a vigorous grower and very attractive.

Flowers appear off and on all through the year, are very long-lasting and make fine corsages.

Any well-drained soil with plenty of leafmold is suitable. Shade loving.

NX505.....\$2.00 each



BLETIA HYACINTHINA

PLEASE ORDER  
BY NAME  
AND NUMBER

*Unusual*

**ORCHIDS** and

*Epidendrums*

This orchid makes a grand showing outdoors in frostless sections or as a house plant in cold climates. Soil should be well drained with plenty of leaf mold added. Water moderately. Shade loving.

**EPIDENDRUM—APRICOT GLOW** A new variety that is a grand shade of glowing apricot. Free flowering and easy to grow. Makes a fine house plant in cold sections.

NX504.....\$2.50 each

**EPIDENDRUM BRACEYII** The largest flowered of all the Epidendrums. Color is a bright Orange Scarlet which is so much wanted. The plant is more compact than any other variety, the flower spikes are unusually large and are borne in great profusion throughout the season. Stock is very limited.

NX506.....\$2.50 each Postpaid

**EPIDENDRUM O'BRIENIANUM** This variety is probably the most widely distributed of all Epidendrums. Its exciting crimson-orange color is unusually attractive. Makes an excellent subject for pot culture.

The plant branches freely and blooms profusely. Excellent for corsages and cut flowers.

Any well-drained soil with plenty of leafmold is suitable. Shade loving.

NR507.....\$1.75 each

**EPIDENDRUM RADICANS** A welcome addition to this class of plant is the Radicans. The color is a very brilliant red and this variety is exceptionally free flowering.

NX509.....\$2.00 each Postpaid

*Strelitzia*

**REGINAE** (Bird of Paradise) Rivaling the tropical Bird of Paradise in splendor, this flower with its combination of red, yellow, blue and orange is quite different from the average garden subject. Easily grown out of doors wherever Oranges thrive or suitable as a tub plant in the colder sections. Should be left undisturbed in a sunny situation in a rather rich soil and liberally watered for most abundant bloom. Blooms last an unusually long time when cut. In great demand by florists everywhere.

NX510 3 year old plants \$2.50 each, Postpaid  
East of the Mississippi, \$2.75 each, Postpaid

*Bletia* (Bletilla)

A hardy garden Orchid that does well as a pot plant. This variety grows from a bulbous root which goes dormant during the winter months and comes up in the Spring producing quantities of true Orchid flowers that are splendid for corsages or table decoration. Any good well-drained soil with about one-third leafmold added suits them. Water sparingly when the plant is going dormant, increasing the supply as the new growth appears. Likes shade or semi-shade.

**HYACINTHINA** NP009  
Beautiful mauve coloring. Throat marked darker.

65c each; 3 for \$1.85;  
10 for \$5.50

**OSMUNDA FIBRE**

The best medium in which to grow Orchids. This material is very light and bulky. We can supply the best grade, thoroughly dry and free from foreign matter.

NX559.....\$1.00 per lb., Postpaid

*Laelias*

This class of Orchid is one of the easiest to grow and will thrive and bloom under the most adverse conditions. We would recommend the Anceps, Autumnalis, and Majalis to those who are beginning to grow Orchids. Grow in medium Osmunda fibre.

**ANCEPS** This variety has two to four flowers to a stem which grows two to three feet tall. The color is violet rose. Blooming season October to December. Grows on wooden slabs or in pots or baskets.

NX540.....\$5.00 each

**AUTUMNALIS** Flowers four inches across, borne three or four to a stem. Color rose purple with a white lip. Blooms are fragrant. Plant is easy to grow. Blooms Oct. to Dec.

NX541.....\$4.50 each

**MAJALIS (Grandiflora)** The flowers are six to seven inches across and are borne one or two to a stem. Color is rose-lilac with a whitish lip, throat spotted purple. Blooms April to June.

NX546.....\$5.00 each

**SUPERBIENS** Flower stems five to six feet long, flowers five to six inches across. Fragrant, with as many as ten to twenty flowers on each stem. Color lilac-purple, crimson purple on the margins. Grows very large. Blooms Jan. to Mar.

NX547.....\$7.50 each

*Zygopetalum*

**MACKAIL** Flower stems eighteen inches long bearing five or six flowers to a stem. Sepals and petals yellowish green with blotches of purple on the inside. Lower part of flower white with radiating vein like deep blue lines. Grows best in equal parts of Osmunda fibre and leaf mold.

NX560.....\$7.50 each



STRELITZIA REGINAE, "BIRD OF PARADISE"

# RARE PLANTS

No C. O. D.  
Shipments

All Items  
Postpaid

## Flowering Leaf Cactus - (Epiphyllum)

Free flowering. They are among the most prized and loveliest of all house plants. Our collection includes some of the rarest varieties.

### Three Outstanding Varieties

- HERMOSSISSIMUS** The coloring in this superb variety is especially remarkable. Crimson, cerise and white. NP173
- ARGUS** Large, broad petaled flower of rich rose pink. One of the best. NP174
- AMBER QUEEN** Fino tone of deep amber, blending to rich copper. A great favorite. NP175

Any of the above 3 for \$2.00

Or Collection: One each of the three varieties.....NP177 \$2.00

### EPIPHYLLUM GENERAL COLLECTION

- |   |   |
|---|---|
| <b>AGATHA</b> Deep pink, red eye. NP179             | <b>JOS. DE LAET</b> Carmine and purple. NP187 |
| <b>CONWAY'S GIANT</b> Maroon and cerise edge. NP180 | <b>PROFESSOR EBERT</b> Deep Orchid. NP192     |
| <b>EDEN</b> Puro white. NP184                       | <b>SUN GODDESS</b> Copper, cerise eye. NP196  |

Above Varieties Any 3 for \$1.75. Collection of 6 for \$3.25. NP196

### Cymbidiums

The most popular of all Orchids for outdoor planting in frostless locations. A well drained soil with about one half leaf-mold suits them best. Water sparingly. Shade loving. We cannot guarantee a specific shade as flowers vary greatly in the same variety. In cold climates can be grown outdoors in containers during Summer and indoors before the first frost.

- |   |  |
|---|--|
| <b>DOREEN</b> Large flowers of bronze yellow, heavily spotted with reddish brown. NX552 | <b>MADELINE</b> Varies from medium to deep pink sometimes chartreuse flowers. Lips spotted red. NX528  |
| <b>HUGH EVANS</b> Flowers of greenish gold with bright red lips. Free flowering. NX524  | <b>MERLIN</b> Flowers shade from deep pink to yellow. Blooms late in the season. Large flowered. NX532 |
| <b>LOWIANUM</b> Flowers greenish yellow marked brown. Mid-lobe marked maroon. NX527     | <b>ZEBRA</b> Pale yellow flowers with red marking on the lip. Very showy. NX535                        |

Any of the above \$6.00 each. Collection of six \$32.50. NX539



FLOWERING CACTUS  
(Epiphyllum)

PLEASE ORDER  
BY NAME AND  
NUMBER



ODONTOGLOSSUM GRANDE

### Odontoglossum

**GRANDE** The flowers are borne three or four to a stem and the individual flowers are about five inches across. The color is yellow lined and spotted dark brown. Deep golden yellow throat. This variety does well under pot culture and a mixture of fibrous peat and decayed leaves in equal quantity suits them best. Plenty of drainage is essential for success. Shade loving. Water moderately.

NX548 ..... \$5.00 each



NEW HYBRID CLIVIA

### Clivia

**NEW HYBRID** Clivias succeed best in dense shade and thrive under overhanging trees, in secluded nooks and patios. In California and the South they are more and more the distinctive feature of finer landscaping for shade, while in colder climates they are outstanding pot plants for the home or conservatory. When used as a pot plant the Clivia should be allowed to become pot bound, more blooms will be obtained.

- |                        |        |
|------------------------|--------|
| NX500 5" Pot Size..... | \$2.25 |
| NX501 6" Pot Size..... | \$2.75 |
| NX502 7" Pot Size..... | \$3.75 |

Note: East of the Mississippi, please add 25c to above prices.

# Germain's Perennials

**NO. C. O. D.  
SHIPMENTS**  
All Items Post-  
paid in U. S. A.  
Only

## GERBERAS

An excellent garden plant and at the same time one of the most beautiful of cut flowers. Extra large size in salmons, pinks, reds, yellows and their variations. Borne on long, wiry stems, ideal for cutting and keep easily over a week. In cold climates gerberas should be lifted after the first frost and stored in a cool place until the soil warms up in the spring. When planting, care should be taken to keep the crown of the plant above the surface of the soil. Sold in mixture only.

NP067  
3 for \$1.40;  
12 for \$5.00



GERBERAS



## COLORFUL GERANIUMS

### FOR BORDERS OR HOUSE PLANTS

**BEAUTE POITEVINE** — Bright salmon pink. Compact grower. Very showy. Double blooms.

NP040.....3 for \$1.40

**CALIFORNIA BEAUTY** — Double flowers of soft rose pink. White eye. Very attractive and showy.

NP039.....3 for \$1.40

**CAMARILLO** — Single. Deep crimson purple. Produces big trusses of flowers. Very prolific bloomer.

NP041.....3 for \$1.40

**EL CAMINO REAL** — Double. Showy crimson purple flowers produced in large quantities on strong growing plants.

NP043.....3 for \$1.40

**FIESTA** — Single. Glowing vermilion red. Very colorful flower.

NP047.....3 for \$1.40

Any Six \$2.60; NPO38 Collection of twelve, \$5.00 postpaid

**GERTRUDE PEARSON** — Pure rose-pink with large white eye. Single flowers.

NP051.....3 for \$1.40

**JACQUERIE** — Probably the finest dark-crimson single Geranium.

NP053.....3 for \$1.40

**MME. BUCKNER** — Snow white flowers. Free bloomer. Double.

NP056.....3 for \$1.40

**MME. LANDRY** — A very showy variety. Color a brilliant shade of apricot salmon. Double flowers.

NP054.....3 for \$1.40

**OLYMPIC RED**—One of the finest and showiest. Large trusses of glowing scarlet. Double.

NP060.....3 for \$1.40

**PAUL CRAMPBEL** — Generally recognized as one of the best scarlets. Double.

NP061.....3 for \$1.40

**VELMA** — Velvety garnet. Red. Large clusters. Single.

NP063.....3 for \$1.40

## CARNATIONS—FOUR NEW GLORIOUS VARIETIES

Among the finest cut flower varieties in existence today. The favorites with florists and decorators. For fine blooms plant the new types.

**IDA**—Beautiful large flowers of light Salmon Pink, borne on strong stems. Makes a wonderful cut flower. NP014

**NORTHLAND**—A beautiful pure white, with a heavy fragrance, long stems. An excellent keeper. NP016

**SCARLET KING**—A splendid producing, variegated red and white novelty. Flowers have beautiful creamy white petals with red center and edges. Fragrant. NP022

**VICTORY RED**—Large bright red flowers borne on stiff stems. A heavy producer of fine blooms. Keep a long time when cut. Fragrant. NP027

Any of the above, 50c each.

Collection of one each of the above varieties, \$1.75, Postpaid. NP029



VIOLET ROYAL ROBE

### Fragrant Long-Stem

**VIOLET ROYAL ROE** Never before have you seen such deep-deep lustrous violet blue color, such delicate petals that open flat like a graceful viola. Never before have you enjoyed such luscious scent—the very essence of fragrant violet perfume, and stems 9 to 10 inches long. NP167.....3 for \$1.15; 10 for \$3.50



### Cacti and Succulents

**DEATH VALLEY COLLECTION** A fine collection that has hundreds of uses. Can be used for making up bowls and dishes or for growing in individual pots. Splendid for indoor growing or for outside culture where weather permits. Grow in sandy soil. Water sparingly.

Death Valley Collection NP198 Twelve fascinating desert plants, Collection....\$2.50 each, Postpaid



# For Lasting Beauty



**NO C. O. D. SHIPMENTS**

**All Items Post-paid in U. S. A. Only**

## ESTHER REED DAISIES

This is without doubt one of the finest cut flowers that we have today. The blooms are pure white and completely double and are produced in large quantities from June to November. The plants are vigorous and free flowering and produce the blossoms on tall erect stems. This variety has found favor in the East and large quantities of blooms are shipped from California daily. Bound to be a favorite in your cut flower garden.

NP160  
3 for \$1.15;  
10 for \$3.50

## Daisies for Lovely Cut Flowers

This class of plant is very easy to grow and all varieties listed below are very free flowering. For borders or massing they are hard to beat.

**THE NEW MAJESTIC DAISY** The grandest daisy introduced in recent years. The white flowers are enormous in size, measuring five inches across. Two rows of petals enhance its beauty. The flower is set off by the handsome yellow cushion and ruffled edged petals. Its keeping qualities are unexcelled by any other daisy, and for cut flowers it is rapidly superseding all other single types. Stock is scarce.

NP161.....75c each, 3 for \$2.00

**CHIFFON** Lovely semi-double flower showing a golden center. Petals are beautifully waved and frilled at the edges, giving the flower a soft airy appearance. A favorite florist's flower, for corsages and bowl arrangements.

NP156.....3 for \$1.35

**GLOIRE DE VITRY** Immense white single flowers in abundance on long strong stems.

NP155.....5 for \$1.00

**MARCONI DAISIES** Great shaggy flowers four inches across that make a beautiful showing and are indispensable in the cut flower garden. Stems are often two and one half feet long. Very much in demand by professional florists. Color is snow white with yellow center. Blooms over an exceptionally long period.

NP159.....3 for \$1.35; 10 for \$4.00



## New Violet Blue Giant

A lustrous shade of blue which is very eye appealing. The center has a distinct white marking which adds to its beauty. Individual flowers are large and open like a Viola. Stems are 9 to 12 inches long on well grown plants. Fragrance is the most delightful of violet perfumes.

NP164.....3 for \$1.25; 10 for \$3.75



## Primroses

**POLYANTHUS—ENGLISH PRIMROSE** Among the most useful and beautiful plants to grow in shady places or in pots, Primroses provide color all through spring and early summer. Polyanthus is one of our leading shade-loving plants. Colors are very bright, including red, gold, rose, blue, white and combinations of these colors. Sold in mixtures only, not by colors.

NP084.....3 for \$1.45; Dozen \$5.00



PACIFIC GIANT DELPHINIUM

## Delphinium Pacific Hybrids

We believe this strain of Delphiniums to be the equal of any strain in existence. Noted for their stiff stems and heavy foliage they are a standout in any garden. While easy to grow a few pointers may be needed to assist in growing them better. Delphiniums do not require a rich soil but do much better where lime is applied at planting time. Well-drained soil is essential to their well being. Keep crowns of plants above the soil line when planting. Sold in mixture only.

NP035.....3 for \$1.10; 10 for \$3.50

# New Fashioned Carnations, With The Old Fashioned Fragrance



NP012 **BARBARA BRIGHAM** (1) Orange apricot blooms with pink pencillings. A good producer and keeper.

NP023 **MELROSE** (2) Pink flowers which are very bright, full and well shaped. Prolific bloomer.

NP028 **RED CLOVE** (3) Deep crimson, fine stems. Free bloomer, good keeper, very fragrant.

NP015 **CALIFORNIA** (4) Clear light purple. Very attractive. Good producer. Very fragrant.

NP026 **PURITAN** (5) One of the most popular whites. Flowers are of good size. Fragrant.

NP025 **PELARGONIUM** (6) White background overlaid on each petal with crimson. Heavy perfume.

NP010 **BARBARA FARR** (7) Bright scarlet red. A splendid cut flower. Delicious perfume.

NP021 **JOHN BRIRY** (8) A dark pink that is one of the most perfect. Large flowers with strong stems.

NP013 **BETSY** (9) Ground color pale whitish lavender. Each petal edged and pencilled purple.

NP017 **CANDLELIGHT** (10) Sulphur yellow background of purple variegations. Very colorful.

NP030 **WOBURN** (11) Blooms are of good size and well formed. One of the finest reds. Fragrant.

NP019 **GOLDEN WONDER** (12) Sulphur yellow marked cerise red. Beautifully formed.

3 for \$1.35; NP031 Collection of Twelve \$5.00, Postpaid in U. S. A. Only



# Lasting Highlights in Any Garden

PLEASE ORDER BY NAME AND NUMBER  
**PERENNIAL PHLOX**

- 1. LILIAN** A fine variety that is very much in demand. The color is clear cameo pink. A showy variety that lasts well when used as a cut flower.  
NP140.....3 for **\$1.25**
- 2. SAN ANTONIO** A vivid and beautiful variety. The color is carmine shaded plum red. A bed in bloom creates a beautiful mass effect of color.  
NP148.....3 for **\$1.25**
- 3. MARIE LOUISE** Large trusses of beautiful white flowers. Considered one of the best of all white varieties.  
NP143.....3 for **\$1.35**
- 4. FIREBRAND** A beautiful scarlet red that holds its color at all times. Trusses are compact and well shaped.  
NP141.....3 for **\$1.25**
- 5. SALMON GLOW** A very free flowering variety that is sure to please. The color is flame pink with salmon shadings. A very strong grower.  
NP146.....3 for **\$1.25**
- 6. FLASH** Carmine red with a brighter center. Very showy and free flowering variety. Strong grower.  
NP138.3 for **\$1.25**

- 7. CAROLINE VANDENBERG** This true lavender-blue shade has large individual flowers. It is considered the best in its color class. Very free flowering.  
NP135.....3 for **\$1.25**
- 8. WM. KESSELRING** Plum purple shading to dainty lilac eye. A most unusual color. This variety is very free flowering and produces nice compact trusses of flowers.  
NP150.....3 for **\$1.25**
- 9. PAINTED LADY** Soft pink and salmon shading. A tall, strong grower. Very beautifully marked. One of the finest and popular varieties with phlox lovers.  
NP144 3 for **\$1.25**

*Phlox*  
One of the finest perennials for garden show and cutting. Grows well in most any soil. With each succeeding year clumps become larger and produce an increasing supply of flowers.

**Phlox**  
Collection of  
**9 Varieties**  
NP152.....**\$3.50**  
Postpaid in U.S.A.  
Only



# IRIS THAT RIVAL THE



## GERMAIN'S IRIS COVER COLLECTION

CHINA MAID (Top Center).....	\$ .50
BRONZINO (Center Left).....	.50
MISTY ROSE (Center Right).....	1.50
GOLDEN MAJESTY (Lower Right).....	.50
FLORA ZENOR (Lower Center).....	.50
WM. A. SETCHELL (Lower Left).....	.60

(See Description on these two pages)

COLLECTION NE693: One each of the six varieties on this page (A \$4.10 value) for \$3.25 Postpaid.

**ARAB CHIEF** As glowing as the exotic coloring of the desert, this brilliant burnt orange iris proudly leads the color parade. A near self. 36".

NE593.....\$2.50 each

**ARCTIC** Gigantic and serene as its name implies, is this gleaming creamy white iris, touched with the splendor of the morning sun. Of perfect form, with ruffled closed standards and broad falls.

NE594.....75c each; 3 for \$2.00

**BALI BELLE** A distinct plicata with large, exceptionally full-formed flowers on 33" stems. Smoky yellow standards and clear primrose yellow falls, delicately but strongly edged pale purple, the whole flower lighted by a blue blaze under the white beard.

NE595.....\$1.50 each

**BERKELEY GOLD** Large clear deep yellow of fine form and texture. Tall well branched stems. A vigorous grower and very full flowering. Blooms late to mid-season.

NE596.....\$1.00 each

**BLUE RYTHM** Large handsome flowers of near cornflower blue. Standards arched and domed with semi-flaring falls. Heavy substance. A color that has always been sought by iris lovers.

NE598.....\$3.50 each

**BLUE SHIMMER** Among the choicest plicatas for originality is this shimmering white, dotted and dappled with clearest tones of blue.

NE599.....\$2.00 each

**BRONZINO** Standards frosty golden bronze, falls rich coppery bronze—a color combination of great richness.

NE604.....50c each; 3 for \$1.25

**CHINA MAID** Soft lilac pink with an overlay of golden bronze. Tall growing. Flowers in mid-season.

NE606.....50c each; 3 for \$1.25

**CLOTH OF GOLD** Clear, even, bright, deep golden yellow. Nice flaring form and heavy substance. The fine flower form is emphasized by its bright golden beard. Well branched stems—36".

NE607.....\$2.00 each

**ALWAYS** The huge flowers are as if carved from old ivory, yet delicately decorated with veins and spatterings of bronzed red-purple. Stems are tall and strong. 2½ feet.

NE592.....50c each; 3 for \$1.25

# RAINBOW FOR COLOR

No Iris Order Filled for Less Than \$1.00

Three Price Applies on  
Three of One Variety Only

### Abbreviations and Definitions

S.—STANDARDS—the upstanding petals.  
F.—FALLS—the three lower petals.  
BICOLOR—Standards of one shade and falls of another.

### PLANTING DIRECTIONS

Iris grow well, if planted in a well drained soil where they can have sun at least one-half of the day. Prepare the soil to a depth of about eight or ten inches. When planting firm the soil well around the rhizome or bulb like part of the plant which should be placed just below the soil level.

Water well after planting and keep moist until the plants begin to grow. Watering every ten days or two weeks thereafter should be sufficient.

Divide and reset the roots every three or four years. Plant from sixteen to twenty-four inches apart.

**CONTRA COSTA** A pale buff bronze plicata with brown central marking, large, broad flowers on 40" stems. Standards light buff bronze, falls paler and slightly edged cinnamon brown. Brown markings at the base of both.

NE608.....\$1.50 each

**ELMOHR** Rich bishop's purple. Incredibly glossy and lustrous. The color seems to smoulder as if some hidden light were seeking to break through. 36".

NE612.....\$1.00 each; 3 for \$2.50

**FAIR ELAINE** A two-toned yellow with creamy white standards and rich yellow falls. Tall growing.

NE615.....50c each; 3 for \$1.25

**FAVORITE SON** A large ruffled bloom of rose purple. Flowers are large and very distinctive.

NE616.....50c each; 3 for \$1.25

**FLORA ZENOR** Distinctive and very lovely is this fine exotic iris. Color pale cameo pink. Widely acclaimed because of its color. Bright tangerine beard.

NE617.....75c each; 3 for \$2.00

**FRIEDA MOHR** The flower stems average 48" in height, the blooms measure 6 1/2 from top of S. to tip of F. Luminous orchid pink, blooms over a long period.

NE619.....35c each; 3 for \$1.00

**GREAT LAKES** Much sought after on account of its light blue color and large size. Tall well branched stems. This variety won the gold medal in 1942.

NE623.....\$1.00 each; 3 for \$2.50

**GOLDEN EAGLE** Sparkling light, clear yellow with a satiny sheen without a hint of orange or amber. Extremely large flowers and a rapid grower. 38".

NE620.....\$1.00 each; 3 for \$2.50

**GOLDEN MAJESTY** Majestic in all its splendor. This brilliant golden yellow is spectacular indeed, one of the finest irises in its color class.

NE622.....50c each; 3 for \$1.25

**GOLDEN MORN** A warm yellow of splendid flaring form. Smooth and firm texture. Deep glistening gold throughout the flower. Very striking blooms with a refreshing fragrance. 40" stems.

NE621.....\$2.50 each

**LADY MOHR** Standards are clear, oyster shell white. Falls are chartreuse yellow with veining. Blooms over a long season, withstands heat and rain.

NE627.....\$1.50 each

## Choice or Rare Varieties



UKIAH

**LOS ANGELES** Great white flowers. S. are faintly edged blue with blue style arms. 40".

NE628.....35c each; 3 for \$1.00

**LOVE AFFAIR** A wholly charming rose pink plicata. Standards flushed and stippled deep vinaceous on white, falls broadly edged with the same color. Stalks average 34" h.gn with as many as 10 buds on the established plants.

NE629.....\$2.50 each

**MARIPOSA MIA** 50" stems, beautifully branched, carry up to 10 buds which open into very large ruffled white flowers with yellow style arms and basal veining. Very vigorous grower.

NE630.....\$3.00 each

**MAUNA LOA** Tall well branched stems bearing flowers of unusual merit. Its reddish tones are very colorful and conspicuous in the garden.

NE631.....35c each; 3 for \$1.00

**MISTY ROSE** Standards pearly pink, falls several shades deeper. Suffused brownish rose below the beard. Very large flowers. Grows 48 inches tall.

NE633.....\$1.50 each

**OLA KALA** One of the best of the deep yellows. So intensely yellow it is almost on the orange side. A flaring, lightly ruffled flower on tall stem.

NE643.....\$1.75 each

**PAINTED DESERT** The copper tan flower has a brownish suffusion at the haft, while a violet midrib trims the standards. The heavy golden beard is conspicuous above the patch of violet on the falls.

NE648.....\$1.00 each; 3 for \$2.50

**PRAIRIE SUNSET** All that has been said about this gorgeous Sass creation is true, but it simply has to be seen to be realized. The blendings of peach, apricot, rose, copper and gold are so well done that one is at a loss to describe it adequately.

NE649.....\$1.00 each; 3 for \$2.50

**RED DOMINION** Deep oxblood red. Standards are violet-red, falls rich velvety purple-red, nearly black. Large flowers with fine velvety finish.

NE654.....50c each; 3 for \$1.25

**ROSE BOWL** Deeper in color than China Maid but not so pink, with its golden bronze center, it is warmer in color. Very vigorous.

NE657.....75c each; 3 for \$2.00

**SERENATA** Pinkish flaring falls shading to hellebore red and softer russet-wine colored standards. The flowers spread about six inches. 2 1/2 feet.

NE660.....\$1.00 each; 3 for \$2.50

**SHERIFFA** Rich, metallic violet flowers with a distinct blue blaze on the falls. Only slight markings show the onco bred strain. Abundance of flowers.

NE661.....75c each; 3 for \$2.00

**SHINING WATERS** "A reflection of the clear blue skies in the still shining waters." Firm wax-like texture. Gigantic flowers on three to four foot branched stems. Deep sky-blue.

NE662.....35c each; 3 for \$1.00

**SIERRA BLUE** Dykes Medal 1935. A true blue self. The falls are broad and of unusual length. Flowers have a smooth lacquer-like finish. 40" stems.

NE664.....35c each; 3 for \$1.00

### TREASURE CHEST COLLECTION

BALI BELLE .....	\$1.50 each
BLUE RYTHM .....	\$3.50 each
BLUE SHIMMER .....	\$2.00 each
CLOTH OF GOLD .....	\$2.00 each
CONTRA COSTA .....	\$1.50 each
MARIPOSA MIA .....	\$3.00 each

A collection of one each of the above Varieties NE691

A \$13.50 Value for \$10.75 Postpaid.

### MELODY COLLECTION

BERKELEY GOLD .....	\$1.00 each
ELMOHR .....	\$1.00 each
GREAT LAKES .....	\$1.00 each
ROSE BOWL .....	75c each
SHERIFFA .....	75c each
SNOW FLURRY .....	\$1.00 each

Collection one each of the above NE695

A \$5.50 Value for \$4.35 Postpaid

**SNOW FLURRY** Blue tipped buds unfolding into a whirling dervish of fluffy white flakes, describes this ruffled and frilled Iris of icy white. 4 feet.

NE666.....\$1.25 each

**SOUSUN** A large glistening lemon-cream with standards of palest yellow and falls of white, effectively bordered with yellow. Beard a contrasting deep yellow. Very fragrant. 36".

NE668.....\$2.50 each

**TEA ROSE** A charming roseate Iris so smoothly blended as to give the appearance of a self. The nicely formed flowers of copper-pink, grow on vigorous plants making a wealth of bloom. 36".

NE669.....\$2.00 each

**TIFFANJA** A unique plicata, standards colonial buff; falls creamy white definitely bordered buff, brushed at the haft and speckled around the border with light brown. 42" tall.

NE672.....\$1.00 each; 3 for \$2.50

**UKIAH** A fine dark Iris in deep tones of red and brown, has falls of the richest velvety texture seen in any flowers.

NE675.....75c each

**ULTRA** One of the largest flowered dwarfs in addition is one of the bluest Irises grown. It is a most reliable Autumn re-bloomer!

NE677.....35c each; 3 for \$1.00

**WARBLER** This charming variety belongs in the intermediate class. A small clean yellow formal flower. Grows about 24 inches tall.

NE680.....35c each; 3 for \$1.00

**WAYFARER** A delicately stippled light lavender on white ground. Large broad frilled flowers. Very free flowering. Midseason bloomer, 40" stem.

NE682.....\$2.50 each

**WHITE GODDESS** Large glistening flowers of a clear shade of white. Standards are large and well domed. A strong grower and midseason bloomer.

NE684.....50c each; 3 for \$1.25

**WM. A. SETCHELL** Flowers are seven inches long by three and one-half to four inches wide. S. deep steel blue. F. are deep violet blue.

NE670.....60c each; 3 for \$1.50



CLOTH OF GOLD



FAIR ELAINE

Rich  
in  
Charm



1



5



10



2



3



7



3



8



11



4



9



12

## GERMAIN'S RARE

*"Martha Washington"*<sup>FD</sup>

### THE GAYEST PERENNIAL

The collection of twenty-four lovely Martha Washington Geraniums includes some of the most beautiful in America. Make excellent pot plants.

- NP101 **Santa Monica** (1)—Light pink.
- NP102 **Mackenson** (2)—Fiery rose.
- NP103 **Marie Vogel** (3)—Pink and Salmon.
- NP104 **Duchess of Cornwall** (4)—Maroon.
- NP105 **Mary Bard** (5)—White.
- NP106 **Salmon Queen** (6)—Salmon.
- NP107 **San Diego** (7)—Light purple.
- NP108 **Springtime** (8)—Pink and White.
- NP109 **Easter Greeting** (9)—Bright red.
- NP110 **Pink Giant** (10)—Rose Pink.
- NP111 **Bella Donna** (11)—Cerise.
- NP112 **Sue Jarrett** (12)—Salmon pink.

Three for \$1.40; Dozen \$5.40 Postpaid

In U. S. A. Only

Please order by Name and Number

*The Gayest Perennial*



# PELARGONIUMS

## Geraniums

### IN THE FLOWER GARDEN

These handsome plants with their deep green foliage and season-long riot of bloom cannot fail to be a source of joy and constant admiration.

- NP113 **Giant Venus (13)**—Salmon Shades.
- NP114 **Grandma Fisher (14)**—Bright Salmon.
- NP115 **Amanda (15)**—Glowing Scarlet.
- NP116 **Dark Presidio (16)**—Maroon and Pink.
- NP117 **Diener's Giant (17)**—Deep pink.
- NP118 **Neuheit Faiss (18)**—Deep Lavender.
- NP119 **Ida Henley (19)**—Rose and Maroon.
- NP120 **Ruth McAfee (20)**—Salmon.
- NP121 **Lavender Quedlinburg (21)**—Lavender.
- NP122 **Gardner's Joy (22)**—White and Brown.
- NP123 **Carmine King (23)**—Cerise Red.
- NP124 **Sensation (24)**—Crimson.

**Three for \$1.40; Dozen \$5.40 Postpaid**  
**In U. S. A. Only**  
 Please order by Name and Number

*Gay  
in  
Color*

*in the Flower Garden*

# CHRYSANTHEMUMS FOR AUTUMN COLOR

Ready for Shipment April 1st. to 15th.

No C. O. D. Shipments Please



GARNET KING

## LARGE FLOWERING TYPES

Here you find the very large flowered varieties, those grown commercially and in the garden for SIZE! To obtain the maximum size, disbudding must be practiced.

**Anaconda.** Deep coppery bronze with golden bronze reverse. Incurred. Makes fine large flowers. NC603

**Apricot Queen.** Bright orange bronze incurred. Gold reverse. Makes seven inch flowers if disbudded. NC604

**Butterball.** Clear bright yellow incurred. Good keeping qualities. Compact grower. NC606

**Dr. J. M. Inalis.** Bright amaranth purple with silvery reverse. An unusual color combination. NC609

**Garnet King.** Very fine dark red. Petals about the center tipped bronze. Reflex type. Fine foliage. NC614

**Keystone.** Bronzy orange incurred. Very showy and fine. A very sturdy grower. NC621

**Monitor.** Deep reddish bronze with golden reverse. A fine incurred type. NC625

**Percy Lancaster.** Large shaggy incurred. Color old rose with silvery reverse. NC628

**Pink Pocket Improved.** Clear, deep pink flowers which have incurving petals. NC629

**Purple Frost.** Long narrow purple petals with tiny silver lines. Very showy and a fine grower. NC630

**Rosy Morn.** Soft old rose incurred type which forms a perfect ball when matured. NC633

**William Turner.** One of the finest whites. Incurred type. Large showy flower of pure white. NC638

Not Recommended Where Frosts Occur  
Before Nov. 1st.

Any Above 3—\$1.20; \$4.00 Dozen



KEYSTONE

## CHRYSANTHEMUM CULTURE

This class of plants requires rich soil and plenty of water all through Summer and Fall months. You will have better results with planting during May and June than you will with earlier planting. Large flowering types should be disbudded, if you want large flowers. Plants should be cut back, if too tall, but never cut back after July 10th. Chrysanthemums make splendid subjects for growing as pot plants.

## POMPONS

For armloads of flowers nothing beats this type. Easy to grow.

**American Beauty.** The name, we believe, adequately describes the color of this variety which is American Beauty pink. A fine grower. NC655

**Baby.** Producer of hundreds of diminutive bright yellow flowers 1/2 inch in diameter. Very showy compact masses of flowers. Tiniest button of all. NC699

**Goldsmith.** A brilliant orange yellow which produces heavily. One of the very finest for cutting. NC670

**Jewel.** Pink flower of perfect form. Unusually strong growth characterizes this plant which blooms profusely. NC704

**Mary Pickford.** Perfect little ball type with white flowers produced in profusion on strong stems. NC703

**Robin Hood.** Dark red flowers one and a half inches across. Very attractive plants and desirable in every way. NC705

**Silver Ball.** Pure silvery white flowers which can be either grown in sprays or disbudded for larger flowers. A heavy producer of attractive flowers. NC674

**Wildfire.** Very brilliant red flowers. A splendid keeper when used as cut flower type. Flowers are borne on strong sprays and hold their color well. NC675

Any of the above 3 for \$1.00

Collection of 8 for \$2.40

## NEW ALASKAMUM

A striking new type of Chrysanthemum of splendid, uniform habit, with masses of very large flowers. Color is pure white with long petals reflexing from a bright golden center grows to immense size even when six or seven stems are left on each plant. Splendid sturdy substance, takes water well and keeps for a long time when cut. Has an exceptionally long blooming period. This variety is also adapted to pot culture.

NC650.....3 for \$1.25

## SPIDER AND FEATHERY TYPES

These unusual types have narrow petals and are extremely showy.

**Aiko.** A large, light pink flower which has interlacing quilled petals. Very showy in flower arrangements. NC680

**Bess Witt.** Narrow long straight tubular petals. Color apricot bronze and salmon pink. NC641

**Butterfly.** Canary yellow. Narrow tubular petals with hooked tips. Good foliage and stem. NC683

**Miss Gena Harwood.** Rosy mauve. An eye appealing color. A very prolific grower. NC642

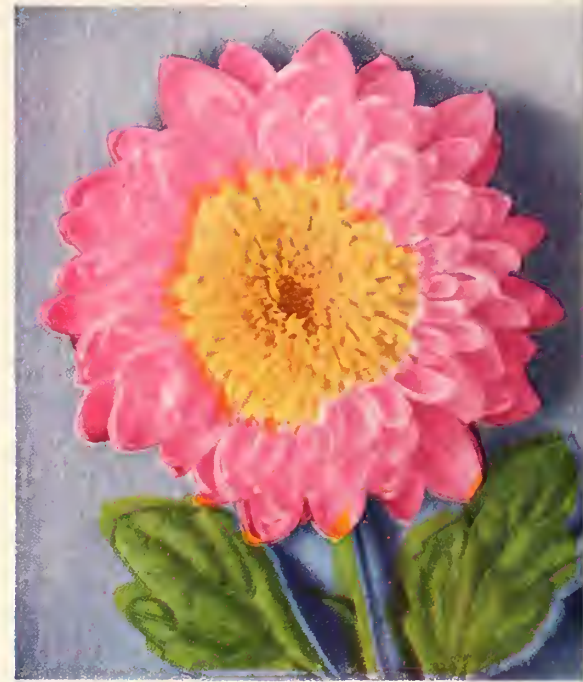
**Orchid Delight.** Delicate orchid pink flowers which have extremely curly, narrow, tubular petals. NC688

**Punch Bowl.** Deep bright burgundy red flowers with narrow tubular petals hooked at the tips and tightly curled upward. Truly perfect form and flower. NC687

**Silver Lace.** Pure white large quilled flowers with hooked tips reflexing. Prolific producer of giant sized flowers. NC689

**Yellow Rayonnante.** The first time this color has been available in the Rayonnante type. Color bright golden yellow. Very showy. NC648

3 for \$1.20; 8 for \$3.00



BEAUTIFUL LADY

## MARIA

Considered the finest novelty in its type to be introduced in many years. Quilled petals are creamy white with a greenish overcast. Spectacular flowers which are extremely showy in floral arrangements and for pot culture.

NC684 \$1.00

## ANEMONE TYPES

Showy flowers which are long lasting and fine for cutting. Centers of the flowers are generally made up of many small petals giving a cushion effect. Can be either grown, as a spray or disbudded, for larger flowers.

**Beautiful Lady.** Bright pink flowers with a creamy white cushion. Very free flowering. Growth strong and compact. NC725

**Estrelita.** Very attractive bronzy orange flowers that are fine for cutting or growing, as a pot plant. NC727

**Matador.** Large rich red flowers of unusual beauty. A strong grower with fine foliage and stems. NC728

**Mrs. J. S. Roberts.** Very unusual flowers of crimson, mauve and violet. Blooms are large and of fine substance. NC729

**Mrs. John Shields.** Beautiful large sulphur yellow flowers, center of the blooms are a dark shade of yellow. NC730

**Sincerity.** Flowers are white with a pinkish overcast. A fine variety for cutting or garden decoration. NC731

Any of the above three for \$1.00

Collection of Six: \$1.75

## NEW CUSHION MUMS

Dwarf compact plants covered with hundreds of blossoms from September until frost. Flowers entirely hide the foliage. Makes a fine garden show.

**Champion.** Red with bronze shading. Very showy and fine for cutting. NC654

**Commander.** Flowers are very bright crimson-red shade. Variety is exceptionally free flowering. NC655

**Panola.** Deep rose pink flowers which are very showy. Blooms are borne in continuous profusion. NC659

**Yellow Sport.** Lemon yellow. A very free flowering variety. NC662

Any 3 for \$1.00

Collection of 4 for \$1.25



# California Flower Seeds

for AMERICAN GARDENS of Delight

Leading Strains - Novelties - Specialties



NEW ALL AMERICA PETUNIA FIRE CHIEF

## Petunia

3593 PINKIE

(Bronze Medal, All America Selections 1948)

The erect bushy plants often reach a height of 33 inches. The flowers are of an exquisite rosy-pink shade and extremely abundant, making a truly spectacular showing in any garden. Don't overlook this beauty!

Pkt. 25c; 3 for 60c

## Painted Daisy

2663 MERRY MIXTURE

A recent introduction, Merry Mixture is far superior to previously used strains of Painted Daisies. It includes new solid colors, as well as a better range of zoned or tricolored flowers. The plants 2½'-3' high bear a wealth of splendid cut flowers.

Pkt. 25c; 3 for 60c



PAINTED DAISY MERRY MIXTURE

## Wilt Resistant Asters

### New Early California Giants

The immense, feathery, Chrysanthemum-like flowers measure from five to six inches. The stems are low branched, heavy, two feet in length and form no laterals, hence no disbudding is necessary. Informal flowers, of great size, charming and graceful. Blossoms full to the center, with broad curled and interlaced petals, borne on long, heavy, non-lateral stems.

2241 **Rose Marie.** Lovely giant bright rose flowers. Pkt. 25c; 3 for 60c

2234 **Light Blue.** Delightful sky blue. Pkt. 25c; 3 for 60c

2233 **El Monte.** The richest crimson—a super giant in size. Pkt. 25c; 3 for 60c

2232 **Los Angeles.** Feathery silver pink, huge blooms. Pkt. 25c; 3 for 60c

2235 **Peach Blossom.** Florists' pink. Pkt. 25c; 3 for 60c

2236 **Purple.** Intense blue purple. Pkt. 25c; 3 for 60c

2239 **White.** Snowy white. Pkt. 25c; 3 for 60c

2240 **New California Giants.** Super-fine mixed! 1/8 oz. 75c; Pkt. 25c; 3 for 60c



CALIFORNIA SUNSHINE ASTERS



COSMOS RADIANCE

## New Sensation Cosmos

2764 RADIANCE

Top award winner in the All America Selections for 1948. A striking combination of two entirely new colors in Sensation Cosmos in the first bi-color Cosmos ever introduced. Radiance has the large, broad petaled flowers of the Sensation Strain, deep carmine rose in color overlaid with a large, well defined zone of rich crimson. Its abundant, magnificent bloom, vigorous growth and excellent cutting qualities, destine RADIANCE for immediate and lasting popularity in the nation's gardens.

Pkt. 25c; 3 for 60c; 1/4 oz. \$1.20



ASTER—EARLY CALIFORNIA GIANTS

## American Beauty Asters

A renowned cut flower strain producing very large densely double flowers on long stems. The flowers are of the American branching type but much larger and sturdier and hold up remarkably well after cutting.

2260 **American Beauty Asters.** Mixed colors. 1/8 oz. 45c; Pkt. 15c; 3 for 40c

## New California Sunshine Asters

These grand new Asters are a cross between the regular sunshine and the feathery giants of California.

2238 **California Sunshine Mixed.** Brilliant rose, flesh, violet, white, etc. 1/8 oz. 75c; Pkt. 25c; 3 for 60c



ASTER PRINCESS LINDA

## New Princess Aster

2344 PRINCESS LINDA

Linda brings an important new florist's color into the already popular Princess type. It is pure, clear rose, a color long desired by florist growers who have had outstanding success with Princesses Bonnie, Marsha and Anne. The Princesses are ideal cut flowers, of attractive appearance and good color. They make satisfactory stems and bloom prolifically. Ideal for home garden bedding and cutting. Flowers have deep crested centers. 2'-2½' high. Linda, like all the Princesses, is highly wilt-resistant.

Pkt. 25c; 3 for 60c

2351 **Princess Mixed** The newest and loveliest of the crested center asters. Pkt. 25c; 3 for 60c

## Improved Giant French Carnations

Remarkably fine, vigorous strain of French origin. Flowers in about five months from seed, it blooms indefinitely! Large, double fragrant flowers in many lovely colors!

- |  |  |                                   |          |
|--|--|-----------------------------------|----------|
| 2582 <b>Bright Rose.</b>                         | Pkt. 25c                                 | 2585 <b>Scarlet.</b>              | Pkt. 25c |
| 2583 <b>Dark Crimson.</b>                        | Pkt. 25c                                 | 2586 <b>Pale Lilac (Pearl).</b>   | Pkt. 25c |
| 2584 <b>Flesh Pink.</b>                          | Pkt. 25c                                 | 2587 <b>White (Jeanne Denis).</b> | Pkt. 25c |
| 2588 <b>Yellow (Marie Chabaud).</b>              |  |                                   | Pkt. 15c |
| 2590 <b>Chabaud's Everblooming Giant Flower.</b> | Mixed. 1/16 Oz. 60c; Pkt. 25c; 3 for 60c |                                   |          |



BACHELOR BUTTON

### Enfant de Nice

Perpetual flowering, large, double, fragrant flowers! Wire-stemmed, vivid colors—finest of all French Carnations—easily grown from seed.

- 2591 **New Giant Enfant de Nice.** Many brilliant colors mixed. Pkt. 50c; 2 for 85c

## Bachelor Buttons

Red—White—Blue

The three favorite colors of this popular cut flower in newer, larger, very double varieties.

- |   |                     |
|---|---------------------|
| 2625 <b>Red Boy.</b> New ruby red.                      | Pkt. 15c            |
| 2627 <b>Snow Man.</b> Large snow white.                 | Pkt. 15c            |
| 2623 <b>Blue Boy.</b> Very double true cornflower blue. | Pkt. 15c            |
| 2631 <b>Red, White and Blue Cut Flower Mixture.</b>     | Pkt. 25c; 3 for 60c |



PRIMULA MALACOIDES

## Baby Primroses

- 3748 **New Giant Mixed.** Our greatly improved, extra large flowered strain. Exquisite bedding plants in the West—lovely pot plants everywhere. Pkt. 50c; 2 for 85c

### Ideal Bedding Dahlias

- 2813 **Unwin's Ideal Dwarf Hybrids.** For bedding, cutting and general garden purposes, these dwarf, bushy plants covered with hundreds of medium size, gaily colored blooms are unrivaled. Easily grown from seed in one season. Per Pkt. 25c  
3 Pkts. 60c



IDEAL DAHLIAS



GIANT SENSATION COSMOS

## Early Flowering Cosmos

Graceful, tall, long stemmed flowers and finely cut foliage. Invaluable in the Summer and Autumn garden; the plants are bushy, 5 to 6 feet high and produce a wealth of excellent cut flowers. Useful for backgrounds and screens, or wherever tall heavily branched flowering plants are needed. Easily grown from seed and succeeding anywhere.

### EXTRA EARLY GIANT

- |  |                         |
|--|-------------------------|
| 2752 <b>Early Giant Crimson.</b> Crimson.  | Pkt. 10c                |
| 2753 <b>Early Giant Pink.</b> Grand Pink!  | Pkt. 10c                |
| 2754 <b>Early Giant White.</b> Extra large flowers!                              | Pkt. 10c                |
| 2773 <b>Sensation Mixed.</b>   | 1/2 oz. 50c; packet 25c |
| 2770 <b>Double Sensation Mixed.</b> Pink, Rosy Crimson and White fluted flowers. | Pkt. 25c; 3 for 60c     |

### NEW COSMOS—Orange Ruffles

Vivid and intense golden orange, the two or three extra rows of petals lend an airy butterfly-like beauty to the highly colored large blossoms. Orange Ruffles will add greatly to the beauty of any garden.

Per Packet 25c; 3 for 60c



SUNGOLD

### New Double Sunflower

- 3122 **Sungold.** New, semi dwarf, rapid growing Sunflower, effectively used for screens, background and tall borders. Very double, many-flowered variety, showy when cut. Pkt. 25c; 3 for 60c



### Nierembergia Cup Flower

- 3471 **Purple Robe.** A very fine deep violet purple shade of the very popular dwarf Nierembergia. Purple Robe maintains its deep color even in full sun. The plant has a neat compact extremely free flowering habit. Pkt. 50c; 2 for 85c

### New Double Sunflower

- 3122 **Sungold.** New, semi dwarf, rapid growing Sunflower, effectively used for screens, background and tall borders. Very double, many-flowered variety, showy when cut. Pkt. 25c; 3 for 60c



SUNGOLD

### New Double Sunflower

- 3122 **Sungold.** New, semi dwarf, rapid growing Sunflower, effectively used for screens, background and tall borders. Very double, many-flowered variety, showy when cut. Pkt. 25c; 3 for 60c

### Alyssum

- 2043 **Violet Queen.** Bright violet flowers in large heads. Lovely, fragrant dwarf border. 6 in. Pkt. 25c; 3 for 60c



ORANGE RUFFLES

CARNATION ENFANT DE NICE

## Golden Calendulas For Cutting



Splendid cut flowers very easily grown from seed. 15 inches in height and widely used for bedding, borders, etc.

- 2496 **Orange King.** Enormous orange flowers with rich, dark center. 1/2 oz. 45c; Pkt. 10c
- 2488 **Yellow Colossal.** The largest golden yellow, informal, ideal cut flower. Pkt. 25c; 3 for 60c
- 2510 **Germain's Extra Double Mixed.** Choice of many sorts! Oz. 60c; Pkt. 10c
- 2511 **Art Shades Mixed.** Pkt. 25c; 3 for 60c



SNAPDRAGON

## Rust Resistant Maximum Snapdragons

Graceful, tall spikes of intriguing blossoms in a splendid range of the most pleasing shades. Effective in large beds and borders and highly prized for cutting.

- |   |  |
|---|--|
| 2078 <b>Copper King.</b> Burnished copper with golden lower lip. Pkt. 25c | 2084 <b>Loveliness.</b> Soft rose. Pkt. 25c                        |
| 2082 <b>Canary Bird.</b> Canary yellow. Pkt. 25c                          | 2086 <b>Paradise Rose.</b> Rose pink. Pkt. 25c; 3 for 60c          |
| 2080 <b>Camp Fire.</b> Vivid scarlet. Pkt. 25c                            | 2190 <b>Super Majestic Mixed.</b> Special choice mixture. Pkt. 25c |

## Early Giant Imperial Stocks

A superb new strain of early flowering habit—equally successful for winter and summer flowering. Largest sized, double fragrant flowers grow profusely on heavy well furnished spikes. Choice new colors!

- |                                   |   |
|-----------------------------------|---|
| 3881 <b>Dark Blue.</b> Pkt. 25c   | 3876 <b>Fiery Blood Red.</b> Pkt. 25c                         |
| 3879 <b>Chamois.</b> Pkt. 25c     | 3889 <b>White (Santa Maria).</b> Pkt. 25c                     |
| 3883 <b>Golden Rose.</b> Pkt. 25c | 3882 <b>Elks Pride Purple.</b> Pkt. 25c                       |
| 3884 <b>Lavender.</b> Pkt. 25c    | 3890 <b>Giant Imperial.</b> Choice Mixed. Pkt. 25c; 3 for 60c |
| 3886 <b>Deep Rose.</b> Pkt. 25c   |   |
- 3924 **Excelsior Column Stocks Mixed.** Incomparable in size and beauty. Individual florets of immense size borne in giant single spikes over 3 ft. in height. Brilliant shades mixed. Pkt. 35c; 3 for 90c



STOCKS GIANT IMPERIAL

## Swiss Giant Pansies

- 3537 **Swiss Giants Mixed.** The largest and most remarkable of all European strains! Well developed flowers of immense size! All popular colors, beautifully marked! 1/6 Oz. \$1.75; Pkt. 35c; 3 for 90c



SWISS GIANT PANSY

## Double Poppies

- 3685 **Double Begonia Flowered Mixed.** A new double form of the prized "Shirley" Poppy. The same exquisite satiny shades, but in larger, many petaled blooms of rare beauty. 1/4 Oz. 35c; Pkt. 15c

## Giant Larkspurs

- 3233 **Giant Imperial Mixed.** Beautiful shades. Tall, giant flowers. 1/2 Oz. 75c; Pkt. 25c; 3 for 60c



DOUBLE GLEAM NASTURTIUM

## Double Gleam Nasturtiums

Large, semi-double, sweet scented flowers. Beautiful foliage, half-trailing habit.

- 3426 **Golden Gleam.** The original fine golden yellow. Oz. 35c; Pkt. 15c
- 3430 **Double Gleam Mixed.** wide range of colors. Oz. 40c; Pkt. 25c 3 for 60c



MARIGOLD SUNSET GIANTS

## Giant Double African Marigold

- 3358 **Sunset Giants Mixed.** Outstanding in the extra large African Marigold group. Pkt. 25c; 3 for 60c

## Double Bicolor Marigolds

- 3348 **Harmony.** Rich bright color. Orange yellow with deep maroon collar. Very double, French type. 1/2 Oz. 50c; Pkt. 25c; 3 for 60c



## EARLY WONDER COLLECTION

Six full-sized packets of Giant Early Spencer Sweet Peas—PLUS—package of plant food tablets. Complete in large 6 x 9 in. package in colorful colors.

Reg. 75c. A special at 50c.

## EARLY FLOWERING SWEET PEAS

- 4279 **Giant Ruffled Early Spencer Mixed.** Pkt. 10c; 1/2 Oz. 25c; Oz. 50c; 1/4 lb. \$1.50; Lb. \$5.00.

## Special Value Collections

**No. 25 Sweet Pea Collection.** Giant Early Waved Spencer—10 Packets—one each cerise, orange, crimson, salmon, white, rose, lavender, blue, cream and maroon—Plus 1 Package of Plant Food. (A \$1.15 Value) for.....75c

**No. 25B Sweet Pea Collection.** Eight superb Early Flowering Sunset Beauties described on this page, in handsome lithographed box. (A \$1.30 Value) for.....\$1.00

## New All Double Petunias

- 3614 **"GLORIOUS" All Double**  
A magnificent new strain of double petunias, producing 100% double flowers of the largest size and in superb shades of rose, lavender, white, purple, etc. Pkt. (About 200 Seeds) \$1.75; 2 Pkts. for \$3.00

3602 **Ruffled Giants of California.** A justly celebrated strain of giant ruffled and frilled blossoms in a surprising range of colors. 1/64 Oz. \$2.25; Pkt. 50c

3607 **Dwarf Giants Mixed.** A new giant flowered, dwarf growing form of superb Giants of California strain. 1/64 Oz. \$2.75; Pkt. 50c

## New Cuthbertson Sweet Peas

Chief characteristics are—great vigor, profusion of large fragrant blossoms, extra long stems, clear colors. Ideal for Spring and Summer blooming.

- 4419 **Choice Mixed.** Oz. 75c; Pkt. 15c

## 79th Anniversary Collection No. 25C

One Pkt. each: Carnation Nice Mixed, Calendula Art Shades, Dahlia Ideal Hybrids, Cosmos Double Sensation, Snapdragon Maximum, Stock Giant Imperial, Pansy Swiss Giants, Marigold Sunset Giants, Petunia Giants of California.

(A \$2.85 Value) For \$1.95

PETUNIA GIANTS OF CALIFORNIA



# Grow the World's Best ZINNIAS

## Gold Medal Dahlia-Flowered Zinnias Collection No. 26

Six packets Giant Dahlia-Flowered—  
one full sized packet each of five  
distinct varieties and one packet Gold  
Medal Mixture. Ideal selection for  
large bed or border planting.

A 90c value for 60c



## Germain's

### Dahlia-Flowered Zinnias

Deep centered Dahlia-like flowers of huge size. A favorite strain of large flowered zinnias for cutting. The plants are heavily branched and grow 2½ to 3 feet high. Our named varieties are true to color and our Gold Medal Mixture offers a beautiful range of the finest and most popular shades.

- 4087 **Canary Bird.** Primrose yellow. ½ oz. 70c; Pkt. 15c
- 4088 **Crimson Monarch.** Best crimson. ½ oz. 70c; Pkt. 15c
- 4089 **Dream.** Deep lavender or purple. ½ oz. 70c; Pkt. 15c
- 4091 **Exquisite.** Rose with darker center. ½ oz. 70c; Pkt. 15c
- 4092 **Golden State.** Rich orange yellow. ½ oz. 70c; Pkt. 15c
- 4097 **Polar Bear.** White. ½ oz. 70c; Pkt. 15c
- 4098 **Scarlet Flame.** Vivid scarlet. ½ oz. 70c; Pkt. 15c
- 4101 **Gold Medal Dahlia-Flowered Mixed.** A superb blend of many beautiful colors. Pkt. 25c; 3 for 60c
- 4103 **Choice Mixed.** Pkt. 10c

### Germain's California Giants

Giants in size. Heavily branched, bearing large numbers of immense double flowers.

- 4175 **Daffodil.** C a n a r y yellow. Pkt. 15c
- 4162 **Orange King.** Burnt orange. Pkt. 15c
- 4166 **Rose Queen.** Rose pink, deep rose center. Pkt. 15c
- 4174 **Violet Queen.** Lavender violet. Pkt. 15c
- 4167 **Scarlet Gem.** Glowing scarlet. Pkt. 15c
- 4164 **Purity.** Pure white. Pkt. 15c
- 4177 **Miss Willmott.** Favorite soft pink. Pkt. 15c
- 4168 **California Giant.** Named varieties mixed. Price: ½ oz. 70c; Pkt. 25c; 3 for 60c
- 4170 **Choice Mixed.** Pkt. 10c

### Giant Zinnias

#### Dahlia Flowered Coll. No. 26A

Ten large, full sized packets of the world's largest dahlia-flowered Zinnias, in the ten most gorgeous colors! Plus free package of special plant food.

All for only 75c

### Pompon or Lilliput Zinnias

Small pompon Zinnias invaluable for cutting and gay garden borders.

- 4143 **Golden Gem.** Golden orange. Pkt. 15c
- 4145 **Scarlet Gem.** Bright red. Pkt. 15c
- 4146 **White Gem.** Pink white. Pkt. 15c
- 4140 **Rosebud.** New rose pink. Pkt. 15c
- 4149 **Lavender Gem.** Pleasing lavender blue. Pkt. 15c
- 4141 **Canary.** Vivid canary yellow. Pkt. 15c
- 4148 **Salmon Rose.** A lovely shade. Pkt. 15c
- 4150 **Pompon or Lilliput Mixed.** Pkt. 25c; 3 for 60c ½ Oz. 60c

### New Fantasy Zinnias

Fantasy Zinnias are unlike any other type of Zinnia grown. The entirely novel, shaggy appearance presented by their fluted, quilled and informally curled petals is a pleasing surprise and offers a challenge to those who love to arrange unusual flower displays.

- 4158 **Melody.** The newest color in this type. It is an exquisitely soft shade of lavender blue. Pkt. 25c
- 4153 **Wildfire.** A brilliant, flame scarlet, the most vivid and sparkling of all red shades. Pkt. 25c
- 4152 **Star Dust.** Exquisite golden yellow. Pkt. 25c
- 4154 **White Light.** Pure white. Pkt. 25c
- 4151 **Fantasy Mixed.** 3 Pkts. 60c; Pkt. 25c ½ oz. 75c



### Novelty Zinnias

- 4160 **Haageana (Mexican Hybrids).** Small, very double flowers, interesting colors. Pkt. 15c
- 4135 **Tom Thumb Mixed.** Dwarf, 6 inches high. Small double flowers. Pkt. 25c
- 4183 **Crown O'Gold Improved.** Large and showy blooms over 5 inches across. Pkt. 25c; 3 Pkts. for 60c

### SUPER GIANT ZINNIAS

- 4186—Huge flowers often 5½ inches across, in a wonderful range of unusually beautiful pastel and bicolor tones. One of the largest and most beautiful Zinnias in existence. Pkt. 25c; 3 for 60c



MAMMOTH "CUT-AND-COME-AGAIN" ZINNIAS

### Mammoth Flowering

Exceptionally free-flowering, heavily branched, sturdy bushes 2 ft. tall, bearing large, double flowers highly prized for cutting, beds, borders and massing in the garden.

- 4106 **Burnt Orange.** Pkt. 10c
- 4118 **Golden Yellow.** Pkt. 10c
- 4111 **Rose Pink.** Pkt. 10c
- 4112 **Purple.** Pkt. 10c
- 4115 **Scarlet.** Pkt. 10c
- 4117 **White.** Pkt. 10c
- 4120 **Mammoth Mixed.** Price: ½ oz. 55c; Pkt. 10c

### BLAZE O'COLOR COLLECTION No. 26B

Favorite assortment of six Giant Flowered Zinnias and one package of plant food tablets. A 75c value for 50c.

# Germain's California Dahlias for 1950



NATHAN HALE



AVALON



## Decorative Dahlias

- 5600 **Avalon** Clear lemon yellow, large flowers borne on tall strong stems.
- 5601 **Clara Carder** Another large Dahlia of pure pink. Excellent for cut.
- 5602 **Gallant Fox** Large Claret Red flowers of good substance. Strong stems.
- 5603 **Ave Maria** A wonderful Dahlia of pure lavender Orchid.
- 5604 **Mrs. George Le Boutillier** Enormous cardinal red flowers borne on tall sturdy stems.
- 5605 **Mrs. I. de Ver Warner** A popular Dahlia of long standing. Large flowers of lavender pink.
- 5606 **Rose Glory** A beautiful shade of clear rose. A good cut flower of lasting quality.
- 5607 **Sir Lancelot** A most unusual Dahlia. The flowers are deep red with purple shadings.
- 5608 **Nathan Hale** Giant flowers in bronze shades. A Dahlia of great beauty and substance.
- 5609 **White King** Enormous flowers of pure white.

The above Dahlias are all Priced alike,  
59c each; 3 for \$1.59; 6 for \$2.89; 12 for \$5.59.

### DECORATIVE DAHLIA COLLECTION NO. 5650

One bulb each of the ten varieties listed above for only \$5.00 Postpaid.

### Germain's New Cut Flower Dahlia 5627 "FIREBALL"

A bright red Dahlia of the ball type. A profuse bloomer, medium sized flowers on long strong stems. Will last in water from a week to ten days.

29c each;  
3 for 89c;  
6 for \$1.79;



12 for \$5.19, Postpaid.

### Six Choice Pompon Dahlias

These small ball shaped Dahlias are excellent cut flowers, like the miniature Dahlias they bloom profusely all through the summer and fall.

- 5628 **Yellow Gem** Pure Yellow.
- 5629 **Snow Clad** White.
- 5630 **Morning Mist** A beautiful shade of lilac.
- 5631 **Mary Munns** Clear lavender.
- 5632 **Little Herman** Red and white
- 5633 **Cardinal** Bright red.

All priced alike at 49c Each; 3 for \$1.39; 6 for \$2.69; 12 for \$5.19, Postpaid.

### GERMAIN'S POMPON DAHLIA COLLECTION

No. 5634—One each of the six Pompon Dahlia varieties listed above for only

\$2.50 Postpaid.

MRS. I. DE VER WARNER

## 5 Superb Cactus Dahlias

- 5610 **Animato** Clear pink of outstanding merit.
- 5611 **Arabesque** Warm golden yellow.
- 5612 **Autumn Pearl** Rich autumn shades of apricot, shading to deep bronze.
- 5613 **Rouge Bouquet** Brilliant orange red.
- 5614 **Peace** A true Cactus type in icy white shading to delicate cream.

**CACTUS DAHLIA COLLECTION No. 5655**  
One bulb each of the five varieties listed above for \$2.50, Postpaid.

### Ball Type or Show Dahlias

One of the most attractive types of Dahlias. The plants are sturdy. The formal ball shaped flowers are borne on strong, erect stems. A good cut flower.

- 5615 **White Swan** Pure white.
- 5616 **Parthos** Deep red.
- 5617 **Bonnie Blue** Deep lavender.
- 5618 **Charlotte Caldwell** Clear orange.
- 5619 **A. D. Livoni** Clear pink.

### BALL OR SHOW DAHLIA COLLECTION NO. 5660

One bulb each of the five varieties listed above for only \$2.50, Postpaid.

### EXHIBITION DAHLIA COLLECTION NO. 5620

One tuber each of Avalon, Gallant Fox, Autumn Pearl, Rose Glory, Sir Lancelot and White King. All varieties of outstanding merit, not only for size but color. 6 bulbs in all for only.....\$2.50

### GERMAIN'S CUT FLOWER DAHLIA COLLECTION NO. 5625

Six superb Dahlias suitable for cut or show. One each of Clara Carder, Mrs. I. de Ver Warner, Peace, Parthos, Bonnie Blue and Pearl for only.....\$2.35

POMPON





### Fancy Leaf Caladium

Caladium provides a brilliant subject unexcelled for many uses. Taking little care, they are ideal pot plants for the home.

- 5032 **Candidum**. Snow-white with green veins and green border.
- 5033 **D. M. Cook**. Shining bright metallic red center on moss-green ground.
- 5034 **Lord Derby**. Transparent rose with dark green ribs and edge.
- 5035 **Mrs. Edith E. Mead**. White leaf, red ribs and narrow green edge.
- 5036 **Mrs. W. B. Haldeman**. Medium leaf of bright pink with narrow green edge.

34c each; 3 for 99c; 6 for \$1.89

COLLECTION No. 5037

1 each of 5 varieties for \$1.50

### Gloxinia

Shade-loving velvety leaved pot or bedding plants with large trumpet-shaped flowers.

- 5290 **Mont Blanc**, pure white.
- 5291 **Blanche de Meru**, rose.
- 5292 **Etoile de Feu**, scarlet.
- 5293 **Emperor William**, violet.
- 5294 **Princess Elizabeth**, blue.
- 5295 **Violacea**, soft violet.

40c each; 3 for \$1.09; 6 for \$2.09

#### GERMAIN'S GLOXINIA COLLECTION No. 5298

1 each of above varieties,  
6 bulbs for \$2.00

PINK CALLA



### Tigridia (BIG SHELL TIGERFLOWER)

5770 **Tigridia Pavonia Grandiflora**—A splendid strain of this showy garden plant. The curious three-petaled flowers are very large and are wonderfully marked. Plant 2 in. deep and 4 to 6 in. apart in shade or half shade.

6 for 59c; 12 for \$1.09; 25 for \$2.09



HYBRID MONTBRETIAS

### Montbretias

Montbretias are of easy culture, doing well in shade or full sun. Massed together in clumps they are effective and may be left in the ground without being lifted for years. They will bloom profusely throughout the summer and fall.

- 5850 **Vesuvius**. Dark blood red.
- 5851 **Kathleen**. Apricot scarlet, primrose center.
- 5852 **Lemon Queen**. Golden Yellow.
- 5853 **His Majesty**. Dazzling orange scarlet, yellow eye.
- 5854 **Princess Mary**. Petals pale yellow, tipped red.
- 5855 **Lady Hamilton**. Yellow center suffused with rosy apricot

Priced alike: 3 for 39c; 6 for 79c; 12 for \$1.49; 25 for \$2.89.

COLLECTION NO. 5860

2 bulbs each of the above 6 varieties for only \$1.39

### Calla Lilies

5151 **White Calla**. Large flowered pure white waxlike flowers, on tall sturdy stems, surrounded with lush, glossy deep green foliage.

29c each; 3 for 84c; 6 for \$1.59; 12 for \$2.99

5152 **Rare Pink Calla**. This lovely miniature Calla is carmine rose in color and about 2 inches in diameter.

39c each; 3 for \$1.09; 6 for \$2.09

5153 **Golden Calla**. This lovely Calla produces grand deep yellow flowers on tall stems, leaves spotted white. Very attractive as shady garden or pot plant.

34c each; 3 for 99c; 6 for \$1.89

#### 5155 CALLA LILY COLLECTION

2 bulbs each of the 3 varieties listed above  
6 bulbs for only \$1.79



GOLDEN CALLA

### Giant Amaryllis

Outstanding on this page is our famous strain of Amaryllis, which should not be confused with any ordinary strain. In mild climates they may be grown outdoors; in colder climates they make excellent pot plants.

5005 **American Hybrids Mixed**. A mixture of all known shades of Amaryllis.

39c ea.; 3 for \$1.09; 6 for \$2.09; 12 for \$3.99

5006 **Red Shades**. Ranging from orange scarlet to deep crimson. Enormous flowers. \$3.50 each

5007 **White With Red Stripes** \$3.50 each.

5008 **Pure White**. \$5.00 each.

#### GERMAIN'S SPECIAL PICTURE COLLECTION No. 5400

2 bulbs each of the bulbs pictured on this page. Caladium, Montbretias, Amaryllis mixed, Tigridias, Pink and Yellow Callas. 12 bulbs in all for only \$3.00 Postpaid

### Tuberose

Originally a wild-growing Mexican herb! Rosette growth of spear foliage surrounds the flower spike, especially noted for its intense, sweet fragrance!

5790 **Mexican Everblooming Single**—Delightfully fragrant.

5791 **Double Pearl**—Large individual double white florets. Lovely in cut flower bouquets.

6 for 59c; 12 for \$1.09; 25 for \$2.09



CLOTH OF GOLD



BLUE BEAUTY



SHIRLEY BRIGGS

### Twelve Popular Exhibition Gladiolus

Each variety included in this collection is a prize winner and the selection presents every color known in Gladiolus. The bulbs are carefully selected, first size and hand-graded.

5234 **Aladdin**. Tall spikes of wide open orange scarlet flowers of great beauty and substance.

5235 **Beacon**. Large fiery orange red flowers with yellow throat. Excellent cut flower.

5236 **Bridesmaid**. Delicate blush pink with a touch of apricot tint. A prize winner.

5237 **Copper Bronze**. Huge flowers on long stiff stems. Color clear orange tinged bronze.

5238 **Gold Eagle**. Best of all yellow. Large flowers on erect long stems.

5239 **King Lear**. Wine purple with a blotch on the lower petal. Gladiolus of rare merit.

5240 **Lavender Beauty**. Clear Lavender blue flowers. A superb variety.

5241 **Maid of Orleans**. A large stately white flower. One of the loveliest and clearest.

5242 **Paradise**. A beautiful shade of apricot, tinted buff and yellow. One of the best.

5243 **Pelagrina**. Deep violet blue. A rare color in gladiolus and the finest in its class.

5244 **Picardy**. Enormous flowers six inches across. Color soft shrimp pink with deeper center.

All the above varieties: 6 bulbs for 59c; 12 bulbs for \$1.09; 25 bulbs for \$2.09  
50 bulbs for \$4.09; 100 bulbs for \$8.09, Postpaid.

#### GERMAIN'S RARE NEW GLADIOLUS

5245 **Novelty Lipstick**. An unusual and charming Gladiolus, pure white with cream shading, petals edged and touched with lipstick red. A stunning combination for lovely flower arrangements.

20c each; 3 for 50c; \$1.75 per dozen.

#### Exhibition Collection-B41

5246

One bulb of each of the Giant Rainbow Gladiolus listed on this page, including the new variety "Lipstick." Individually labeled in colorful lithographed box. Makes a lovely gift for any garden lover.

Twelve Large Bulbs \$1;  
3 Collections for \$2.75

#### GERMAIN'S

#### Tip Top Gladiolus Mixture

5279

A fine mixture of large sized bulbs comprising all the colors of the rainbow.

6 for 49c; 12 for 89c; 25 for \$1.89; 50 for \$3.69, Postpaid.

### Six Rare and Unusual Novelties

## GLADIOLUS

5249 **Blue Eyes**. Our 1950 introduction. A very beautiful and distinctive Gladiolus. Pure White Flowers with two bright blue blotches about the size of a dime in the throat. Grows three feet tall.

\$1.00 each; 3 for \$2.75; 6 for \$5.25.

5248 **Abu Hassan**. Dark Violet Blue flowers, opening as many as eight at one time. Borne on tall straight stems.

1 for 25c; 3 for 69c; 6 for \$1.29; 12 for \$2.39

5250 **Cloth of Gold**. Germain's 1947 Novelty. Tall spikes of well developed flowers in clear shades of tangerine shading to gold.

75c each; 3 for \$2.00; 6 for \$3.75.

5251 **Easter Parade**.

The finest pure white Gladiolus in existence. Unusual tall spikes with as many as ten and twelve large pure white flowers open at one time.

\$1.00 each; 3 for \$2.75;  
6 for \$5.25.

5253 **Hinemoa**. Deep pink, flaked and spotted chocolate crimson. Throat clear yellow. An unusual Gladiolus of striking appearance.

1 for 25c; 3 for 69c;  
6 for \$1.29; 12 for \$2.39.

5254 **Shirley Briggs**. Another outstanding Gladiolus of the clearest pink. In the same class as Alice Adams, a great favorite with the cut flower growers.

\$1.00 each; 3 for \$2.25;  
6 for \$5.25.

#### GERMAIN'S NOVELTY GLADIOLUS COLLECTION NO. 5256

One bulb each of the 6 varieties listed above, 6 bulbs in all. \$4.25 value for only \$3.89, Postpaid.



EXHIBITION COLLECTION



HINEMOA



RED PHIPPS



GOLDEN STATE



ABU HASSEN

## Germain's 15 Famous Gladiolus

5257 **Burma.** A gorgeous array of large ruffled flowers of clear rose.

5258 **Blue Beauty.** Tall spikes of flowers of clear light blue. One of best of recent introductions.

5259 **Chamouny.** Rich rose pink with a dainty salmon edging.

5260 **Charles Dickens.** An old favorite. Medium sized spikes covered with deep wine red flowers.

5261 **Elizabeth the Queen.** One of the loveliest of lavender shades ever found in Gladiolus. The flowers are large and ruffled and the stems tall and sturdy.

5262 **Golden State.** By far the best deep yellow Gladiolus.

5263 **Lantana.** Flaming orange colored flowers borne on tall sturdy stems.

5266 **Margaret Beaton.** A wonderful Exhibition Gladiolus. Pure white with orange blotch in throat.

5267 **Oriental Pearl.** Huge creamy white flowers on tall strong stems.

5268 **Rosa Van Lima.** One of the most popular of rose colored Gladiolus. Throat and lower petals clear rose, shading to old rose towards the edges.

5269 **Red Phipps.** A beautiful Gladiolus of the clearest red. A wonderful cut flower.

5270 **Snow Princess.** Large, pure white flowers, creamy throat.

**SPECIAL GET ACQUAINTED OFFER**  
5280—26 blooming size bulbs. 1 each of Red, Yellow, Pink, Rose, White plus one novelty.  
**\$1.00 Postpaid**

5271 **Spotlight.** Large ruffled yellow flowers with a red blotch in the throat.

5272 **Stoptlight.** Deep red flowers with yellow throat. A gladiolus of outstanding beauty.

5273 **Valeria.** A very fine light red Gladiolus, many flowers open at one time. A good keeper.

All priced alike: 6 for 69c; 12 for \$1.29; 25 for \$2.49; 50 for \$4.89; 100 for \$9.69.

5275 **Collection** of two each of the fifteen varieties. 30 bulbs in all for only \$2.89.

### GERMAIN'S COMPLETE SPRING GARDEN COLLECTION NO. 5650

50 bulbs for only \$5.00 Postpaid.

6 Begonias. Collection No. 5100	2 Yellow Callas
4 Dahlias. Collection No. 5635	2 Pink Callas.
26 Gladiolus. Collection No. 5280	5 Tuberoses.
5 Regal Lilies.	
5650 Complete Bulb Garden for Only \$5.00.	

## Grow Lovely and Fragrant LILIES OF THE VALLEY in the House All the Year 'Round

Anyone can grow fragrant blossoms indoors in 21 days! Clusters of charming pure white bell-shaped blossoms on tall graceful stems stand, full grown, just 3 weeks after you receive Germain's imported forcing pips.

Six Lily of the Valley pips, No. 5361 ..... \$1.19  
12 Lily of the Valley pips, No. 5361 ..... \$2.29  
25 Lily of the Valley pips, No. 5361 ..... \$4.29

No. 5567 Package of Fibre suitable for growing Lily of the Valley indoors..... 35c

**PLANTED POTTERY CONTAINER NO. 5362**  
Beautiful California glazed pottery Coffee or Beverage Mug filled with prepared bulb fibre and planted with 5 Lily of the Valley pips, you just add water. Choice of 6 design containers ..... \$2.75

### PLANTED CONTAINER

5363—Round Fluted pottery bowl in blue California Pottery planted with 5 Lily of the Valley pips only \$1.89 Postpaid.

### BARGAIN OFFER Regal Lily

A truly hardy Lily. Sturdy stems 4 to 6 feet high. Center of flower flushed yellow shading to white at the edges. Outside the petals are streaked brown at the ribs. A flower of great beauty.

5388—Six Blooming size Regal Lily Bulbs for only \$1.00 Postpaid.



REGAL LILY





# Germain's Tuberos Rooted Begonias



CRISPA OR SINGLE FRILLED

## Germain's

### Six Fascinating Begonia Nouvelties

5115 **AUTUMN GLOW**—An extremely large Cristata type, the tufts or crests of which are a deep copper, contrasting with the rest of flower, which is apricot. The flowers sometimes measure ten inches across. The foliage is very attractive and much more luxuriant than any other tuberos rooted begonia.

5116 **SUNSET**—a profusely frilled crispa marginata, copper with red edge.

5117 **FASCINATION**—A crispa marginata, white with rose margin.

5118 **RED TRIUMPH**—A ruffled camellia type of ruby-red with a velvety texture. Very large.

5119 **ROSE DAWN**—A ruffled light rose of the double camellia type.

5120 **STARS and STRIPES**—Brick-red flowers speckled with white. Blossoms not large, but very numerous.

All Priced Alike \$1.00 each; 3 for \$2.75  
6 for \$5.25; 12 for \$10.00

**COLLECTION No. 5122.** One each of the above listed varieties. 6 bulbs for \$5.00

PICOTEE DOUBLE



**TUBEROUS BEGONIAS** are exceedingly popular with the Home Gardener, because of their lush green foliage and magnificently colored wax-like flowers. They are unsurpassed for shady locations or as pot plants. Pamphlet of cultural directions is furnished free with all orders

5070 **CAMELLIA-FLOWERED.** This is the true strain of Camellia-flowered Doubles, which has been developed through years of painstaking hybridization. Flowers extra large. Colors: Red, Orange, Rose, Pink, Yellow and White.

5075 **CARNATION TYPE OR DOUBLE FRILLED.** Produces a large double flower, resembling a Carnation in form. Colors: Red, Orange, Rose, Pink, Yellow and White.

5080 **PICOTEE DOUBLE.** A Camellia type Blossom with the edges of each petal marked in a different shade of color, making an unusual and striking contrast. Available in a mixture of pastel shades.

5085 **HANGING BASKET OR LLODII.** An unsurpassed strain containing double flowers only. Often hundreds of blossoms to the plant. Excellent for hanging baskets or rock gardens. Available only in mixed colors.

5090 **SINGLE CRISPA OR SINGLE FRILLED.** Enormous frilled and ruffled flowers. Colors: Red, Orange, Rose, Pink, Yellow and White.

5092 **MARGINATA.** A crispa type flowers, in shades of creamy white with an edge of deep pink or bright shades of salmon orange edged copper.

5095 **ROSEBUD.** A double type resembling perfect rose buds. Many flowers are colored in two shades. Lovely mixture of pastel shades.

**PRICE: All varieties on this page: Large tubers. 39c each. 3 for \$1.09; 6 for \$1.99; 12 for \$3.89**

5099 **COLLECTION.** One large bulb of each variety listed above, 7 bulbs in all. \$1.89



HANGING BASKET OR LLODII

### Hanging Basket Begonias in Dutch Shoes B45

Handsome Pottery replica of a Dutch wooden shoe and 2 hanging basket Begonia bulbs in lovely pastel colors, with package of fibre and cultural brochure.

No. B45 complete..... \$1.89



ROSEBUD

### Camellia-Flowered Begonias

#### IN SUPERB NAMED VARIETIES

##### Specially Selected Tubers

We are this year offering a limited number of tubers, which have been carefully selected and marked at blooming time. Each plant has been chosen for exceptional merit and purity of color. These tubers are all of the Camellia type.

5105 Santa Margarita .....	Pink
5106 Santa Barbara .....	Yellow
5107 Santa Maria .....	White
5108 Santa Clara .....	Apricot
5109 Santa Paula .....	Salmon
5110 Santa Ana .....	Orange

Each tuber is carefully marked and packed in peat moss.

**\$1.00 Each; No. 5112 Collection. One Each of Above, \$5.00**

#### Bargain Offer No. 5100

5 Bedding size Camellia-type Begonias. One each of 5 colors. Our choice. Plus One Hanging Basket Begonia.

6 bulbs for \$1.00 Postpaid.

CAMELLIA-FLOWERED



# GERMAIN'S

*Horticultural Specialists Since 1871*

LOS ANGELES, CALIFORNIA



MISSION BELLS  
1950  
All America Winner  
See Page 3