

HEADQUARTERS
CHUGOKU CIVIL AFFAIRS REGION
APO 182

D/RPL/hk

CCAR 386.3

26 October 1950

MEMORANDUM FOR: Hiroshima International Trade and Industry
Bureau

THROUGH: Chugoku Liaison and Coordination Office

SUBJECT: Movements of Reparations Equipment

1. Reference is application of Toyo Kogyo K.K. (Code Nos. 11-18, 11-28) subject: "Application for Approval to Transfer Location of Reparation Dead Storage Machineries," 10 October 1950.

2. Approval is granted for within the plant movement of reparations equipment as specified in referenced application.

3. All costs incidental to movement and relocation of equipment will be borne by the applicant and will not be charged to any reparations account.

G. N. BAILEY
Colonel Inf
Chief

MANUFACTURING
AND
INDUSTRY
FILE 11-28

Dec. VII

Subject File Ref
244

26/10

238

ECON-1693

10 October 1950

SUBJECT: APPLICATION FOR APPROVAL TO TRANSFER LOCATION OF
REPARATION DEAD STORAGE MACHINERIES

TO : Chief, Economics Section, Chugoku Civil Affairs Region,
Kure.

To commence production of our new model cars it has become necessary for us to observe an expansion program of our present 3-Wheel Car assembly shop.

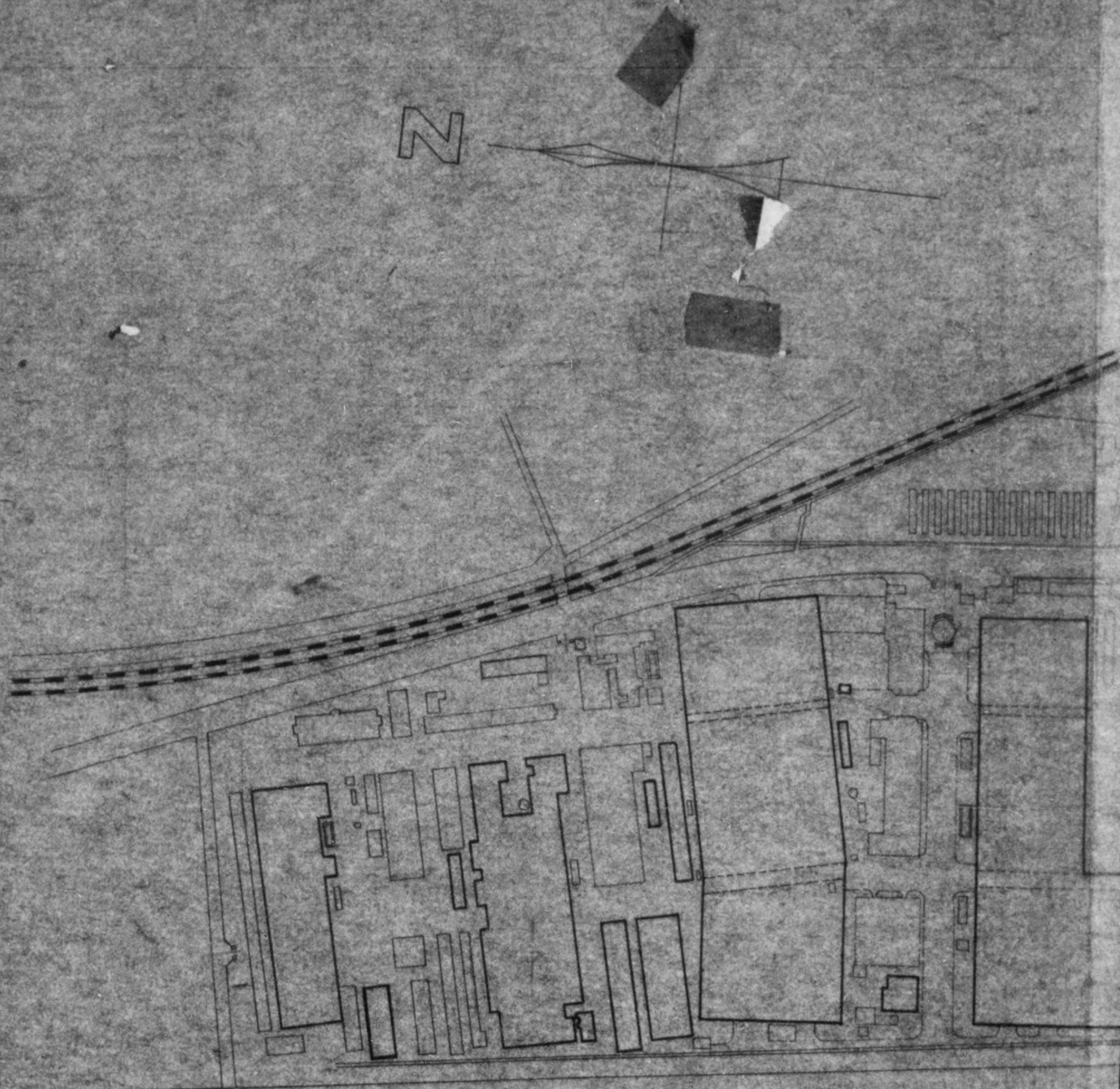
In order to meet this situation it is our desire to ask you to grant us permission to transfer location of the reparation dead storage machineries, which at present occupies a portion of the building where our present assembly shop is located.

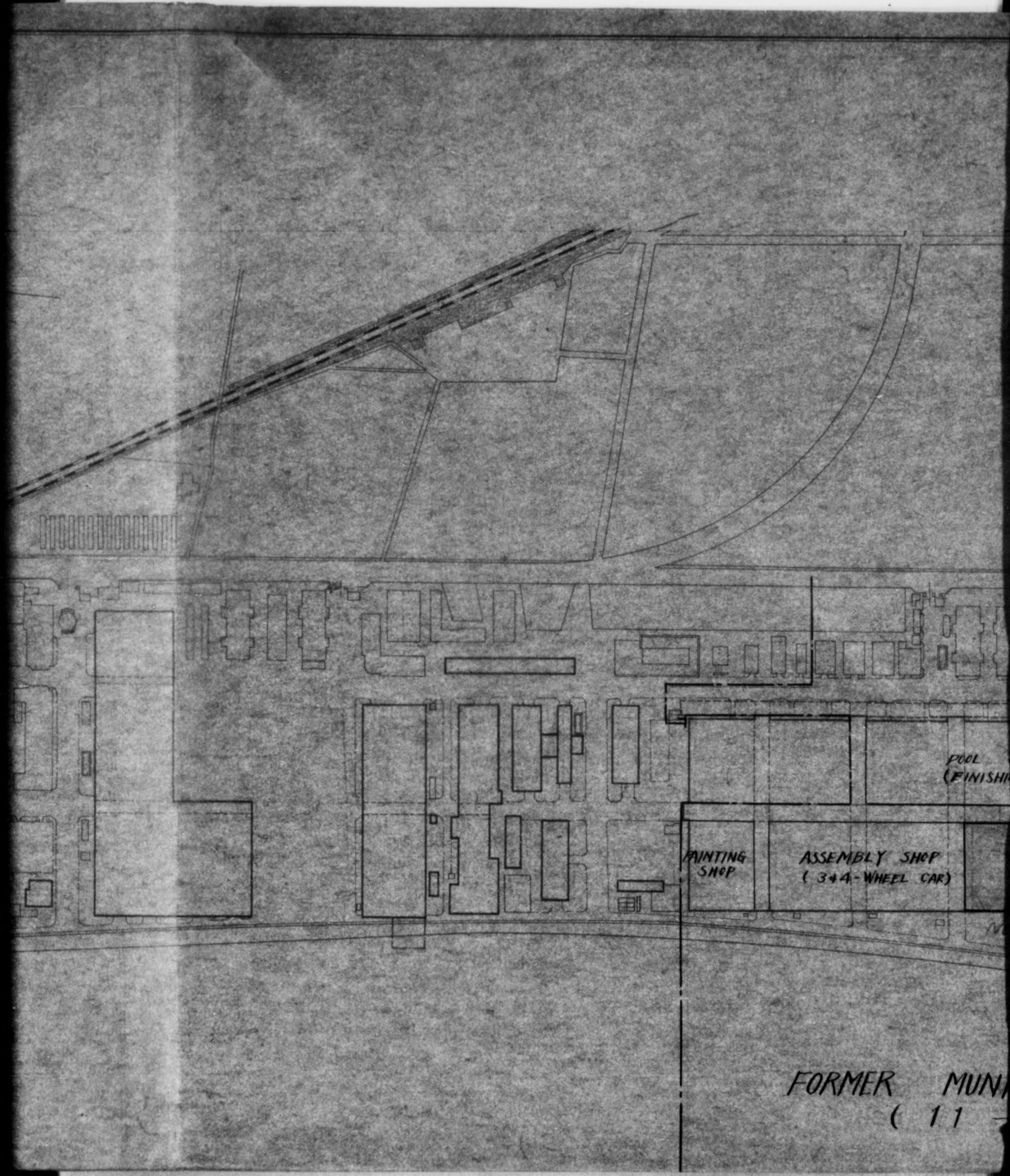
It is our anticipation to remove the dead storage machineries from their present location to our former Shop Education and Training Building, about 300 meters away and within the compound of our plant. (Refer attached drawing)

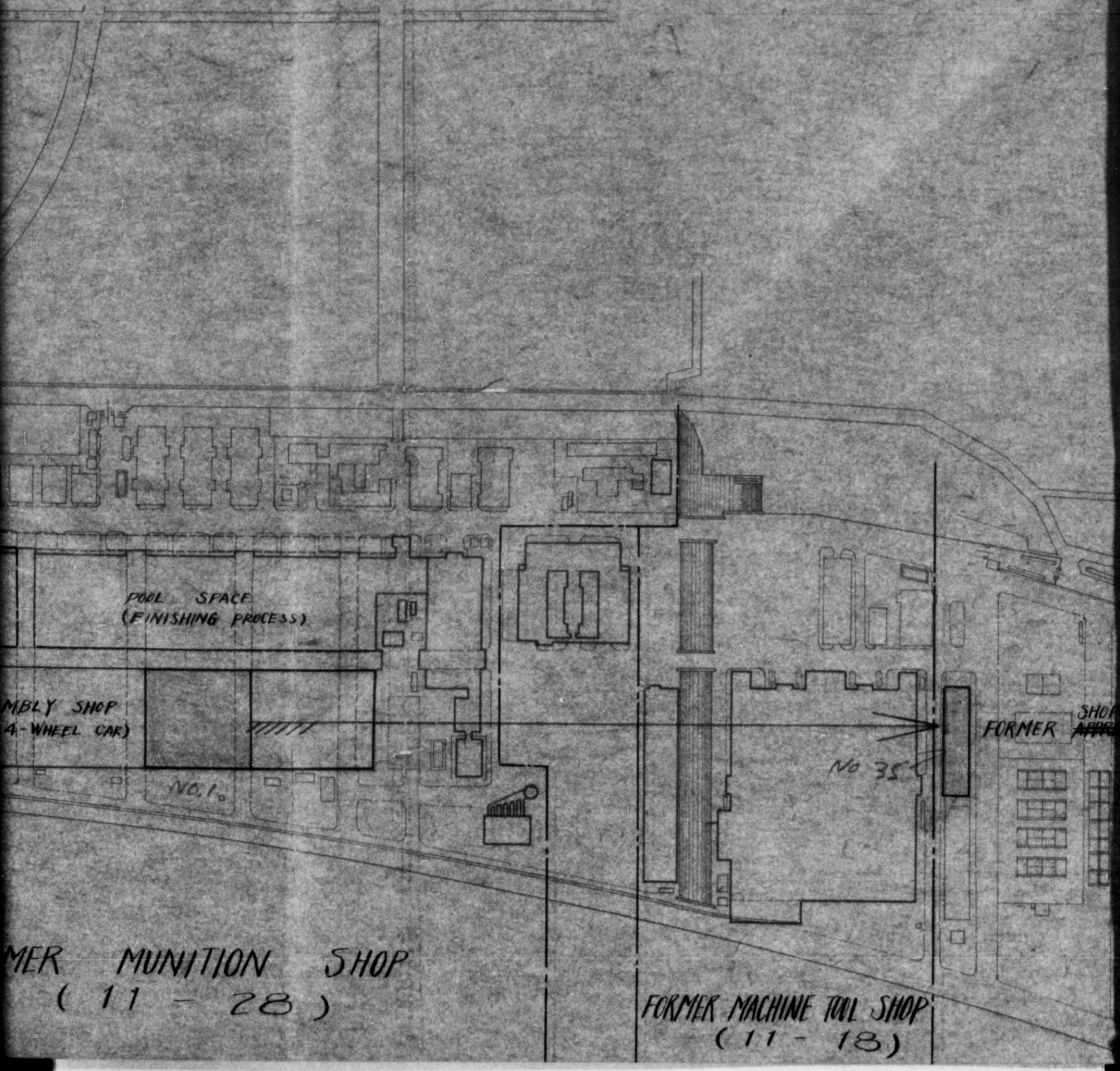
Custodial and maintenance duty of these machineries will in no way be affected by the proposed transfer and it goes without saying that our best of attention will be rendered them as far as custody and maintenance is concerned.

Your lenient consideration is requested.

Tokinosuke Mura
Tokinosuke MURAO
Chief Custodian,
Toyo Kogyo Kabushiki Kaisha







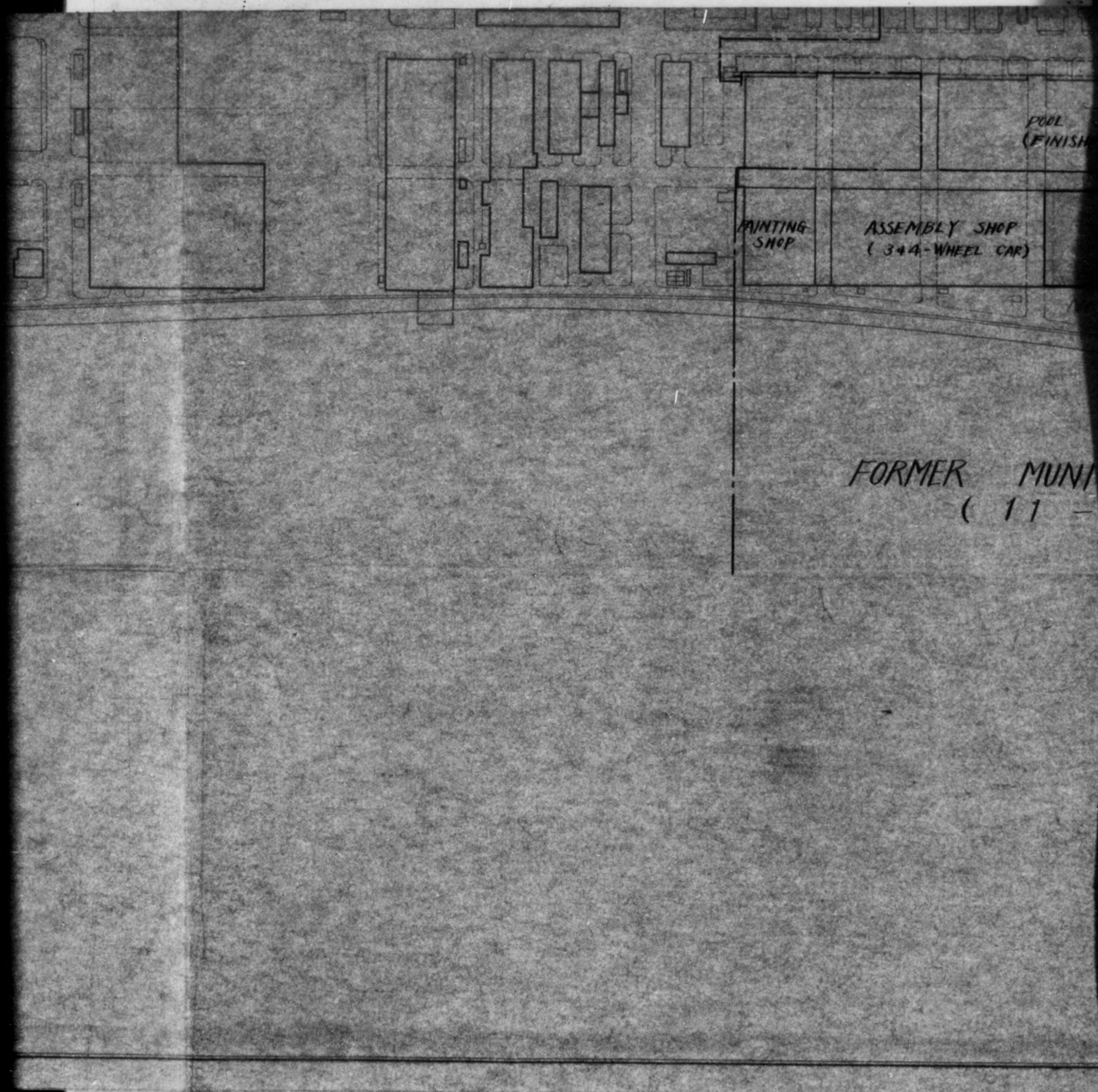


SHOP

5





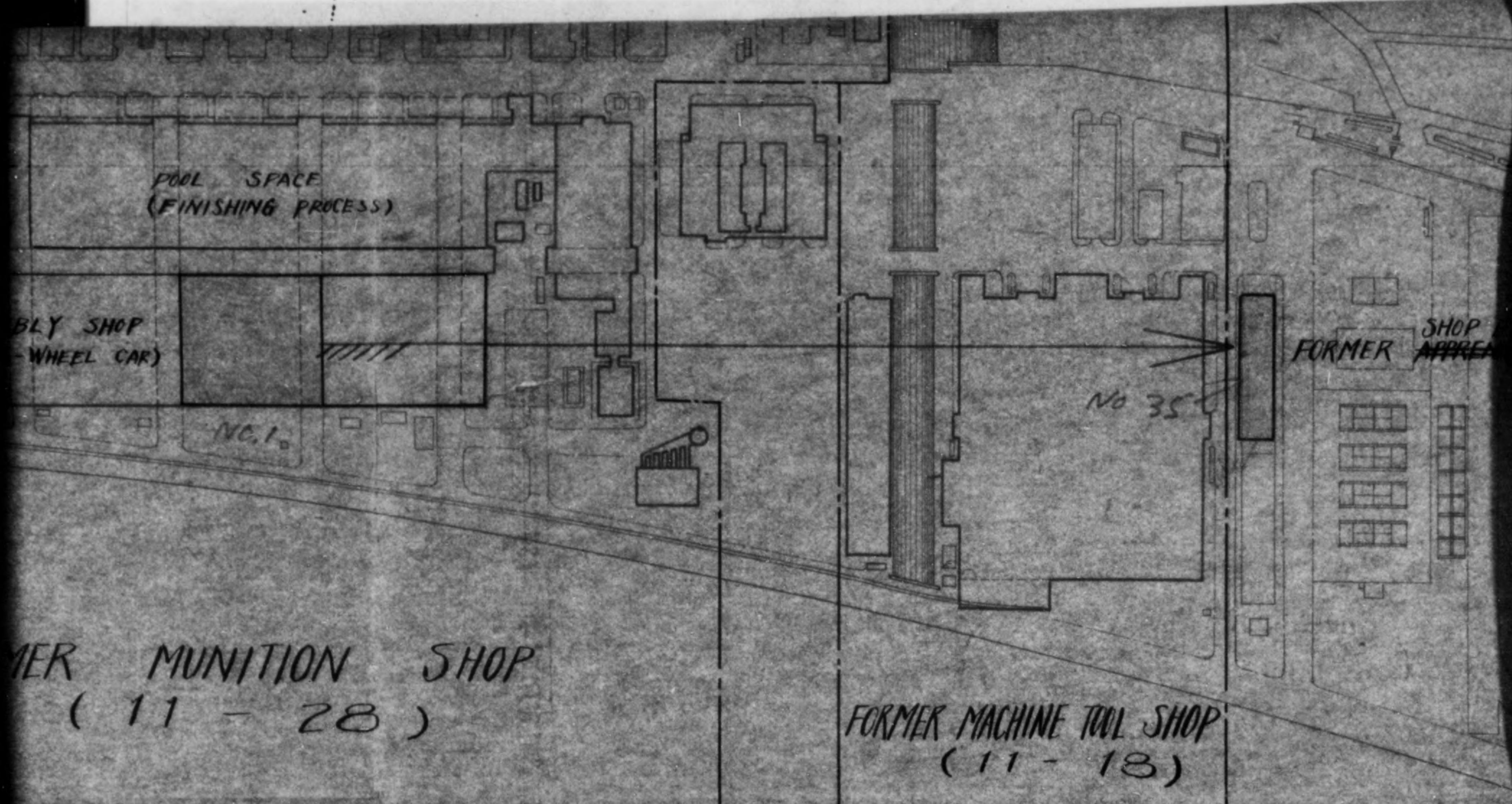


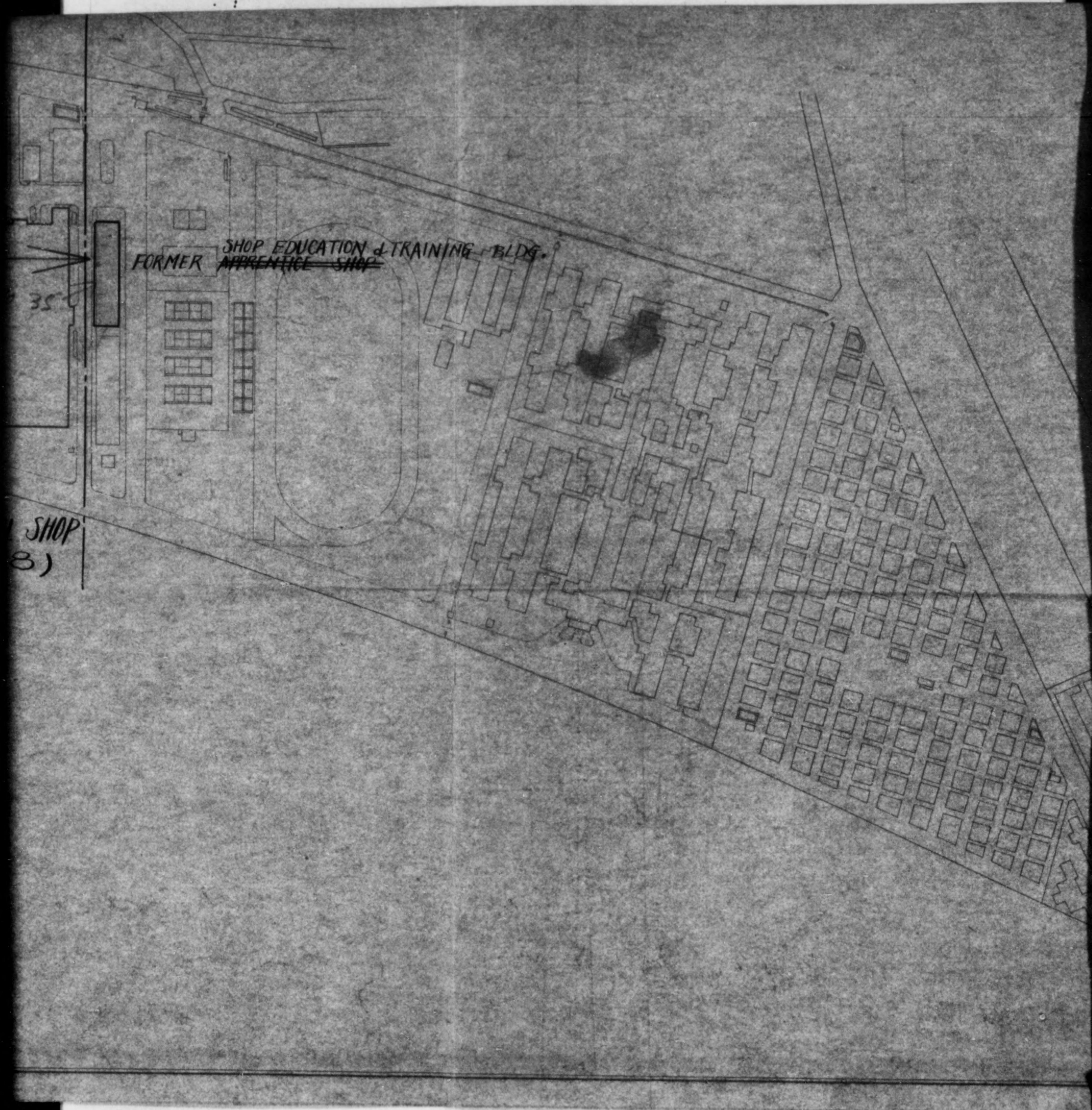
POOL
(FINISH)

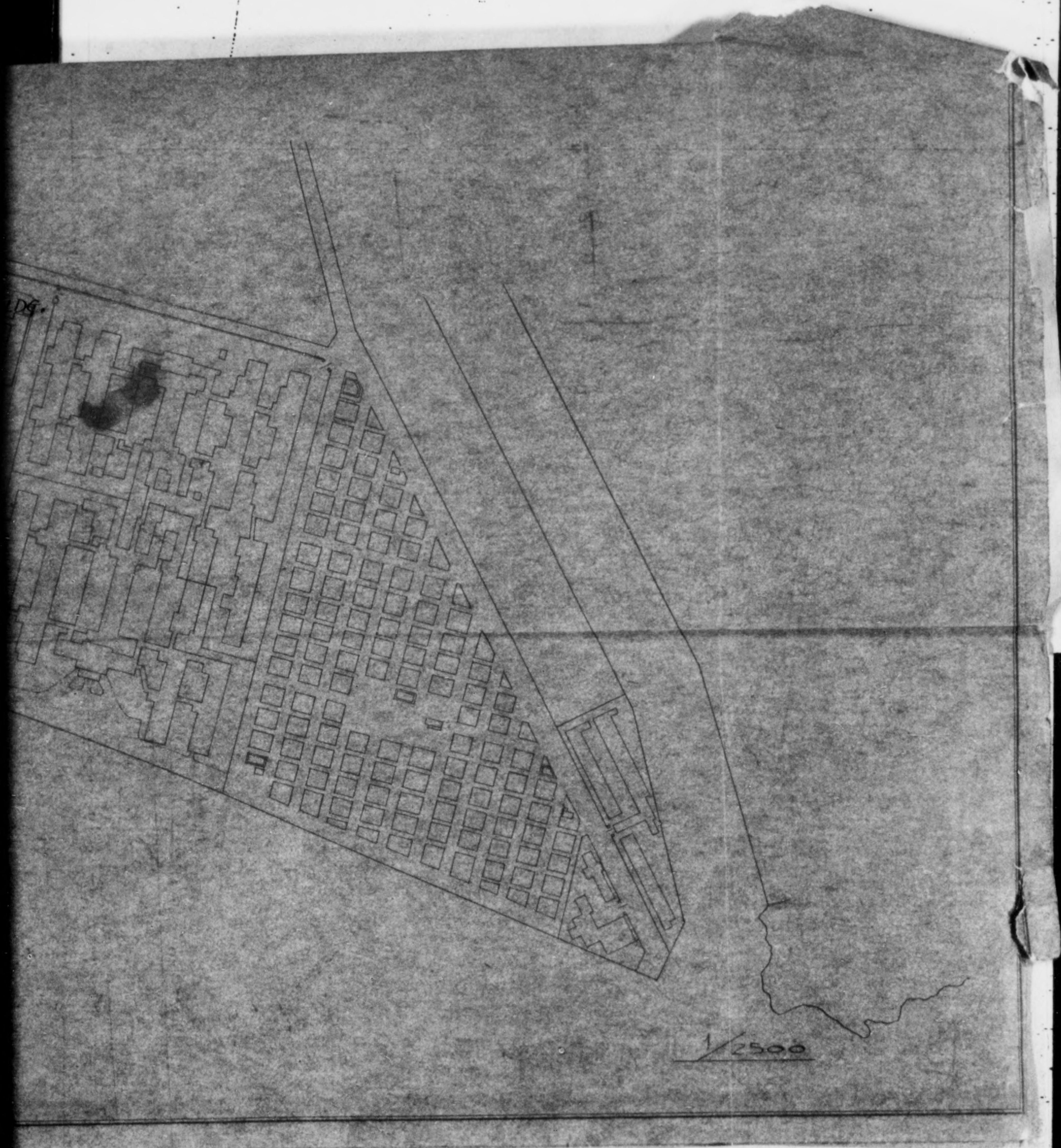
PAINTING
SHOP

ASSEMBLY SHOP
(344-WHEEL CAR)

FORMER MUNI
(11 -







DS

1/2500