

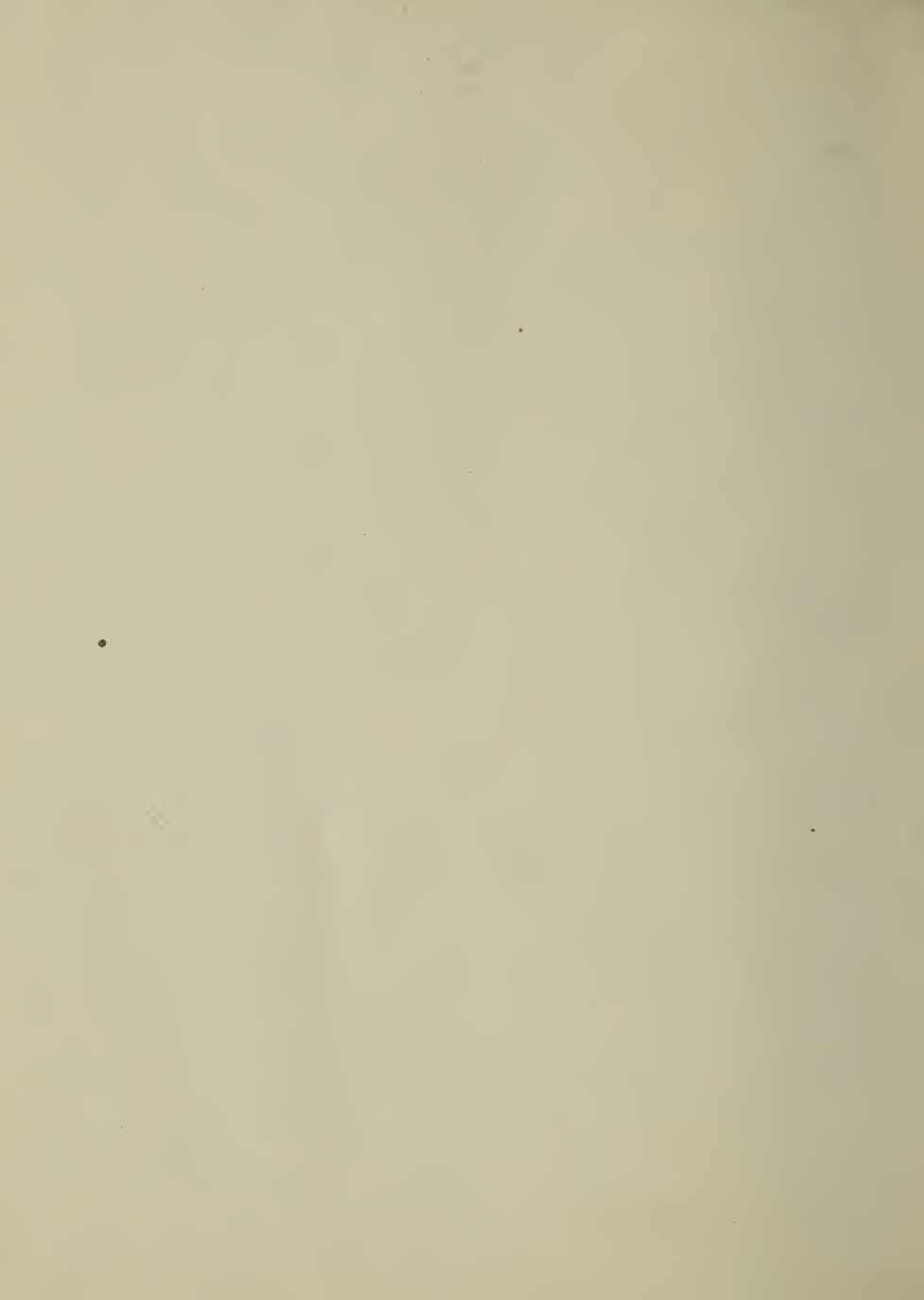
JK

2025

S4H8







THE
VOTERS'
GUIDE.

PRICE 25 CENTS

Edward Holland, Publisher.

Commercial notes
SAN FRANCISCO.

Copyright, 1894, by Edward Holland.

He

THE VOTERS' GUIDE

—CONTAINING—

Diagrams showing Boundaries

—OF—

Congressional and Assembly Districts AND PRECINCTS

—ALSO—

List of Officers, with Headquarters, of Executive, State Central,
County, Finance, Campaign and other Committees of

The Republican Party

Synopsis of the "Purity of Elections" Law

—AND—

GENERAL INFORMATION REGARDING REGISTRATION, QUALIFICATION OF
VOTERS, TRANSFERS, CHANGE OF RESIDENCE, ETC., ETC.

—RELATING TO—

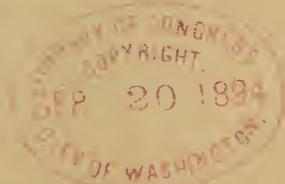
General Election, Nov. 6th

Price 25 cents.

Published and Copyrighted by

EDWARD HOLLAND, SAN FRANCISCO

1894



39350-2

25.7
5143

MEMORANDA.

JK 2025
.S4 H2

THE VOTERS' GUIDE.

REPUBLICAN STATE TICKET.

- GOVERNOR, MORRIS M. ESTEE, Napa.
LIEUTENANT-GOVERNOR, S. G. MILLARD, Los Angeles.
SECRETARY OF STATE, L. H. BROWN, Alameda.
CONTROLLER, E. P. COLGAN, Sonoma.
TREASURER, LEVI RACKLIFF, San Luis Obispo.
ATTORNEY-GENERAL, W. F. FITZGERALD, San Francisco.
SUPT. PUBLIC INSTRUCTION, SAMUEL BLACK, Ventura.
SURVEYOR-GENERAL, M. J. WRIGHT, Tulare.
CLERK SUPREME COURT, T. H. WARD, Los Angeles.
STATE PRINTER, A. J. JOHNSTON, Sacramento.
RAILROAD COM. 1st DIST., WM. BECKMAN, Sacramento.
RAILROAD COM. 2d DIST.,
RAILROAD COM. 3d DIST., W. R. CLARK, San Joaquin.
ASSO. JUSTICE SUP. CT., long, F. W. HENSHAW, Alameda.
ASSO. JUSTICE SUP. CT., long, E. S. TORRANCE, San Diego.
ASSO. JUSTICE SUP. CT., short, W. C. Van VLEET, San
Francisco.
BOARD EQUAL'N 1st DIST.,
BOARD EQUAL'N 2d DIST., L. C. MOREHOUSE, Alameda.
BOARD EQUAL'N 3d DIST., JACKSON EBY, Red Bluff.
BOARD EQUAL'N 4th DIST., GEO. L. ARNOLD, Los Angeles.
CONGRESS, 1st DIST., JNO. A. BARNHAM, Sonoma.
CONGRESS, 2d DIST., GROVE L. JOHNSON, Sacramento.
CONGRESS, 3d DIST., S. G. HILBORN, Alameda.
CONGRESS, 4th DIST.,
CONGRESS, 5th DIST.,
CONGRESS, 6th DIST., JAS. McLACHLAN, Los Angeles.
CONGRESS, 7th DIST., W. W. BOWERS, San Diego.

REPUBLICAN STATE CENTRAL COMMITTEE.

P. B. Cornwall, Chairman, 450 Main Street.

D. M. Burns, Secretary, Nevada Block.

Legal Committee.

W. H. Chickering, Chairman;

M. Cooney,

J. C. Daly,

A. Reuf,

E. C. Hart.

Executive Committee.

San Francisco:— P. B. Cornwall, Isaac Upham, J. H. Mahoney, W. W. Montague, J. J. Jacobi, Ln. Dennery, H. L. Dodge, J. J. Evans, D. M. Burns, W. C. Johnson, David Kerr, Asa R. Wells, E. C. Palmieri, W. Easton, A. Reuf, M. Cooney, F. McQuaide, Jas. McNab, H. P. Sontag, C. Bundschu, J. D. Spreckels.

San Mateo:—A. Hayward.

San Joaquin:—J. K. Doak.

Sonoma:—A. B. Lemmon.

Ventura:—J. C. Daly.

Alameda:—W. H. Chickering.

Sacramento:—E. C. Hart.

Santa Clara:—O. A. Hale.

Shasta:—Edw Sweeney.

Los Angeles:—Robert Northam.

THE VOTERS' GUIDE.

REPUBLICAN COUNTY COMMITTEE.

Officers.

C. W. Manwaring, Chairman.

C. C. Morris, Secretary. A. A. Louderback, Treasurer,

Executive Committee.

F. D. Worth, Chairman.

P. Prendergast, Chas. Fancher, Sr., R. W. Heilman,
J. P. McMurray, F. J. Conn, B. A. Tracy,
E. Trittenbach, A. J. Raisch, J. F. Morgan, E. Attridge,
F. L. Jones, J. King, T. W. Chandler, G. W. Allen.

County Committee.

G. W. Allen,	J. E. Donovan,
E. Attridge,	D. S. Dorn,
G. P. Ayers,	H. V. P. Deming,
T. F. Barry,	Leon Denery,
A. Badlam,	F. Eggers,
Aug. Brooks,	W. Easton,
Max. Brooks,	Chas. Fancher, Sr.,
C. O. Burton,	A. C. Forsyth,
G. Baccigalupi,	Wm. Gerstner,
P. J. Crimins,	J. T. Graham,
F. J. Conn,	Max. Goldberg,
W. A. Carnes,	R. W. Heilman,
T. W. Chandler,	Geo. Ives,
P. B. Cornwall,	F. L. Jones,
C. G. Clinch,	M. Kelly,
Wm. Cluff,	J. King,
A. E. Castle,	Geo. A. Knight,
J. L. Koster,	P. Prendergast,

COUNTY COMMITTEE CONT'D.

A. A. Louderback,
A. Lilienfeld,
J. F. McGlynn,
F. McQuaid,
W. H. McLaughlin,
J. P. McMurray,
J. F. McCarthy,
H. S. Martin,
H. S. Morrison,
C. W. Manwaring,
J. F. Morgan,
R. C. Myers,
J. E. Marks,
C. C. Morris,
Lott. D. Norton,

B. D. Pike,
L. E. Phillips,
A. J. Raisch,
H. Steffens,
B. A. Tracy,
E. Trittenbach,
I. H. Thompson,
D. S. Weaver,
F. D. Worth,
Geo. L. Wilson,
Asa R. Wells,
J. A. Watt,
Chas. M. Yates,
A. Zihn.

SYNOPSIS OF THE
"PURITY OF ELECTIONS" LAW.

§1—Refers to sections of Political Code relating to the filing of certificates of nomination of Candidates. At the time of filing any such certificate of nomination, there must also be filed the names of a Committee of five electors, who have signed an agreement to receive and disburse all moneys contributed for the purpose of aiding the election of Candidates nominated. Any vacancy occurring in this Committee within 15 days of election shall not be filled, but the remaining members shall complete the duties required.

§2—Within 21 days after the completion of the official canvass of the result of the election, said Committee shall file an itemized sworn statement of all moneys received and disbursed, together with the names of all those who either paid or were paid and for what service. Such statement to be a public document open to public inspection.

§3—Every Candidate required to file certificate same as that of aforesaid Committee, within 15 days after day of election, with affidavit attached according to form furnished. Vouchers required for all payments except for sums under five dollars.

§4—Any Candidate failing to make statement as aforesaid, or making a false statement, will be disqualified from holding office.

§5—The total expenditure of a Candidate in aid of his election is limited, as follows:—If office is for term of one year, 5 per cent of one year's salary; if for term of two years, 10 per cent of one year's salary; if for term of three years, 15 per cent of one year's salary; if for term of four years, 20 per cent of one year's salary; if for more than four years, 10 per cent of one year's salary. For an officer where fees are paid instead of salary, \$150 the maximum amount allowed; for an office where a per diem wage is paid, \$100 the maximum amount allowed.

§6—Claims for election expenses must be presented within ten days after the return day of the election, or they become void. (See following Section.)

§7—Election claims subject to ruling of Superior Court.

§8—All moneys collected or disbursed for election expenses must be through the hands of the Committees or Candidates. All other contracts void.

§9—No liquors to be sold on premises of Headquarters or

SYNOPSIS OF PURITY OF ELECTIONS LAW.

Committee rooms.

§10—All election printed matter must bear the imprint of printer or publisher.

§11—Defining and forbidding acts which would cause Candidates to forfeit office.

§12—Any elector may contest the right of elected Candidates to hold office, upon showing infringement of election laws by Candidate.

§13—Upon trial of action the Court to rule regarding Section 12.

§14—Forty days after the return day of election is the limit of time in which aforesaid action may be commenced. Action for illegal payment of money may be commenced at any time after. Action to contest election of Governor, or Lieutenant Governor, or member of Senate or Assembly, must be commenced within 20 days after certificate of election is issued.

§15—Actions must be made in Superior Court of county.

§16—Candidate who has forfeited office cannot be appointed to any vacancy therein during the unexpired term, or during the next ensuing term.

§17—Offenses mentioned in this act, of State Prison penalty, subjects the offender upon conviction to loss of right of suffrage, and certified copies of such conviction must be sent to each County Clerk within ten days thereafter, and placed on public record.

§18—District Attorneys required to prosecute offenders against this act, under penalty of loss of office upon failure to do so.

§19—Unlawful to barter with voters in any manner. Penalty for this not less than one year in State Prison.

§20—Continuation of Section 19.

§21—Unlawful self-registration punishable by not less than one year in State Prison.

§22—Every person who is the cause of unlawful registration, punishable by not less than one year in State Prison.

§23—Whoever votes unlawfully, or interferes to prevent lawful voting in any manner, is liable to not less than two years in State Prison.

§24—Whoever attempts to vote unlawfully, liable to not less than one year in State Prison.

SYNOPSIS OF PURITY OF ELECTIONS LAW.

§25—Persons guilty of giving or offering bribes, punishable by not less than one year in State Prison.

§26—Tampering with ballots by election officials, punishable by not less than two years in State Prison.

§27—The substitution of false for the true election returns, punishable by not less than two years in State Prison. The alteration of election returns, punishable by not less than one year in State Prison.

§28—Any aider or abettor in unlawful voting may be sent to State Prison for two years.

§29—Fraudulent acts of any election officer, liable to a fine of \$1000, and five years in State Prison.

§30—False statements made by Committees or Candidates, referred to in Sections 1 and 3, punishable by not less than one year in State Prison.

§31—The person who signs or files Committee certificates referred to in Section 1, is liable to not less than one year in State Prison, if such certificate contains false names, or if true names are not given.

§32—Offenders against Sections 19, 20, 21, 22, 25, 26, 27, 28, 30 and 31, may become witnesses to convict others without making themselves liable.

§33—Betting on results of election a misdemeanor.

§34—§35—Refusal or neglect of Committees or Candidates to file statements, a misdemeanor

§36—§37—§38—§39—Unlawful payments, a misdemeanor.

§40—The placing of boxes at polling places or offices of registration for deposit of moneys for refreshments forbidden.

§41—Employers forbidden to influence votes of employees in any manner.

§42—Officers of election guilty of opening, examining or marking of ballots, liable to a fine of not less than \$50, and imprisonment not less than 30 days.

§43—Penal Code prescribes penalty for other crimes.

§44—Other conflicting Acts repealed.

§45—Giving immediate effect to Act.

REGISTRATION.

Must be made at office of Registrar, New City Hall, from August 8th to October 15th, both days inclusive, between the hours of 9 A. M. and 5 P. M., or at Precinct Boards for five days, from October 16th to October 20th, both days inclusive, between the hours of 9 A. M. and 10 P. M. Hours of Registration may be extended by order of the Board of Election Commissioners.

The Board of Election Commissioners consists of the Mayor, Auditor, Tax Collector, City and County Attorney, and Surveyor. The Mayor is President, and the Registrar is Secretary. Meets to transact business at call of President.

All voters must be registered.

Voters require to be residentg of the State for one year; of the City and County for 90 days; and of the precinct of residence for 30 days prior to the date of Election.

No person must cause himself to be registered in one county when his registration in another county remains uncanceled. Cancellation is made at the request of the party registered.

Naturalized citizens must have become such 90 days prior to an election before being entitled to vote.

OPENING AND CLOSING OF POLLS.

The polls must be opened at sunrise of the morning of the day of election. and must be kept open until 5 o'clock on the afternoon of the same day.

Before receiving any ballots the Board must, in the presence of any persons assembled at the polling place open and exhibit the ballot box. Then it must not be removed from polling place, nor presence of the bystanders, until all the ballots are counted, nor opened until after the polls are finally closed.

WARD BOUNDARIES.

- 1.—Washington, Kearny and water front.
- 2.—Vallejo, Larkin, Kearny and water front.
- 3.—California and Market, Kearny, Washington and water front.
- 4.—Washington, Larkin, Vallejo and Kearny.
- 5.—California, Kearny and Market.
- 6.—Washington, Kearny, Pine and Larkin.
- 7.—Market, Second, Harrison and water front.
- 8.—Market, Larkin, Pine and Kearny.
- 9.—Harrison, Seventh, Channel and water front.
- 10.—Market, Seventh, Harrison and Second.
- 11.—Market and Ridley, Park ave, Frederick, H st., Pacific Ocean, Channel and water front.
- 12.—Larkin, Market and Ridley, Park ave, Frederick, Stanyan, H st., Pacific Ocean and waters of bay.

CONGRESSIONAL DISTRICTS.

4TH DISTRICT.—All that portion of the City and County of San Francisco bounded as follows: Commencing at a point of intersection of the center of Leavenworth street and the bay of San Francisco, continuing thence along the center of the following named streets: Leavenworth to Broadway, Broadway to Hyde, Hyde to Sacramento, Sacramento to Van Ness ave, Van Ness ave to Market, Market to Eleventh, Eleventh to Harrison, Harrison to junction of Napa and Twentieth; thence along Twentieth to Howard, Howard to Army, Army to Precita ave, Precita ave to Colusa, Colusa to San Bruno road; thence along San Bruno road to the boundary line dividing the counties of San Mateo and San Francisco; thence along said boundary line to the bay of San Francisco; thence along the shore of said bay to Leavenworth street, the place of beginning, with all the islands in the bay of San Francisco within the boundaries of the city and county of San Francisco.

5TH DISTRICT.—All that portion of the City and County of San Francisco not included in the Fourth Congressional District, with the islands known as the Farallon Islands, together with the counties of San Mateo and Santa Clara.

SENATORIAL DISTRICTS.

17TH DISTRICT.—All that portion of the City and County of San Francisco comprised within the boundaries of the Twenty-eighth and Twenty-ninth Assembly Districts.

18TH DISTRICT.—Within the boundaries of the Thirtieth and Thirty-second Assembly Districts.

19TH DISTRICT.—Within the boundaries of the Thirty-third and Thirty-fifth Assembly Districts.

20TH DISTRICT.—Within the boundaries of the Thirty-fourth and Thirty-sixth Assembly Districts.

21ST DISTRICT.—Within the boundaries of the Thirty-seventh and Thirty-eighth Assembly Districts.

22ND DISTRICT.—Within the boundaries of the Fortieth and Forty-first Assembly Districts.

23RD DISTRICT.—Within the boundaries of the Thirty-first and Thirty-ninth Assembly Districts.

24TH DISTRICT.—Within the boundaries of the Forty-second and Forty-third Assembly Districts.

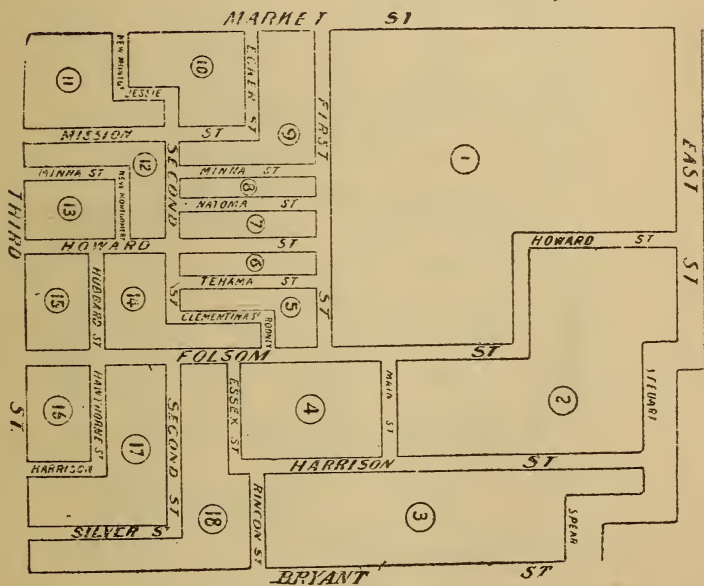
25TH DISTRICT.—Within the boundaries of the Forty-fourth and Forty-fifth Assembly Districts.

ELECTION PRECINCTS
CITY OF SAN FRANCISCO
28TH ASSEMBLY DISTRICT

PART OF 17TH SENATORIAL DISTRICT AND PART
OF 4TH CONGRESSIONAL DISTRICT

CITY AND COUNTY OF
SAN FRANCISCO.

1894

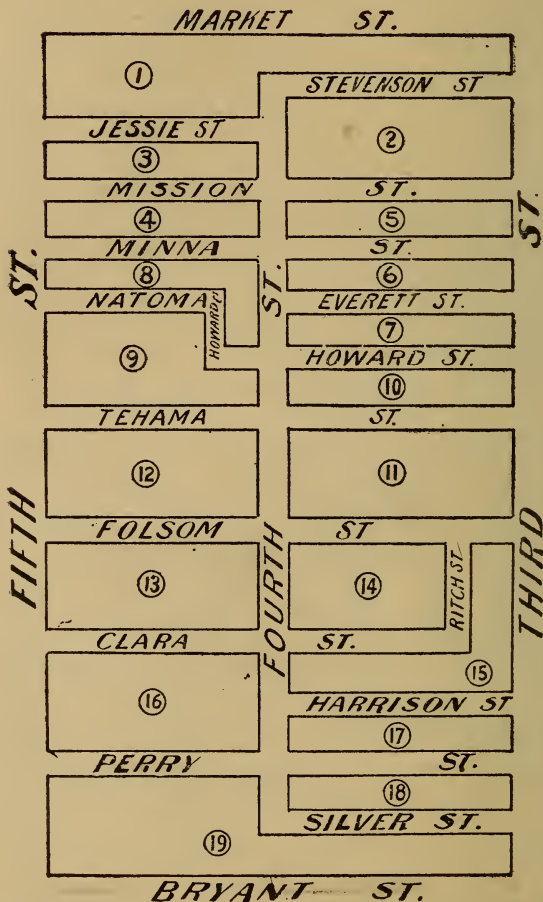


ELECTION PRECINCTS
OF
29TH ASSEMBLY DISTRICT

PART OF 17TH SENATORIAL DISTRICT AND PART
OF 4TH CONGRESSIONAL DISTRICT

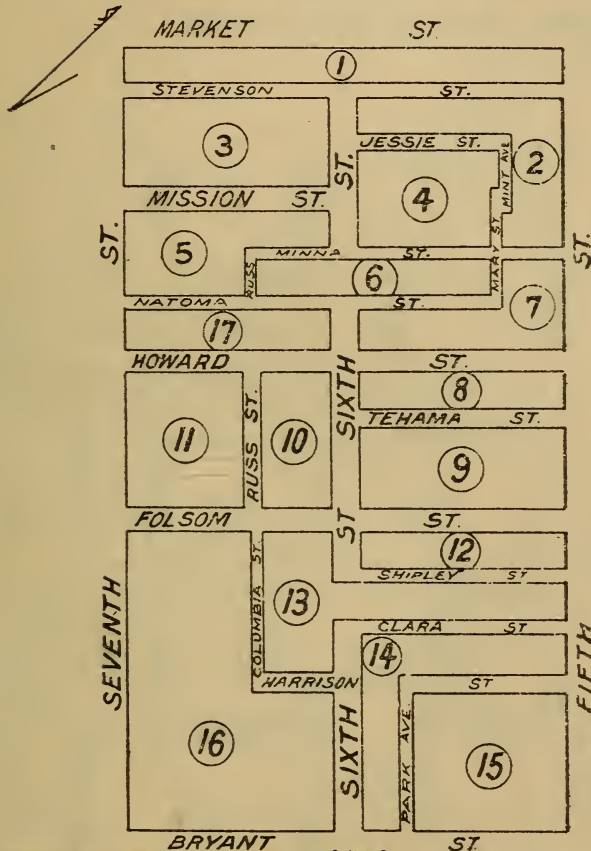
CITY AND COUNTY OF
SAN FRANCISCO.

1894



ELECTION PRECINCTS OF 30TH ASSEMBLY DISTRICT

PART OF
18TH SENATORIAL DISTRICT
AND PART OF
4TH CONGRESSIONAL DISTRICT
CITY AND COUNTY OF
SAN FRANCISCO. 1894.



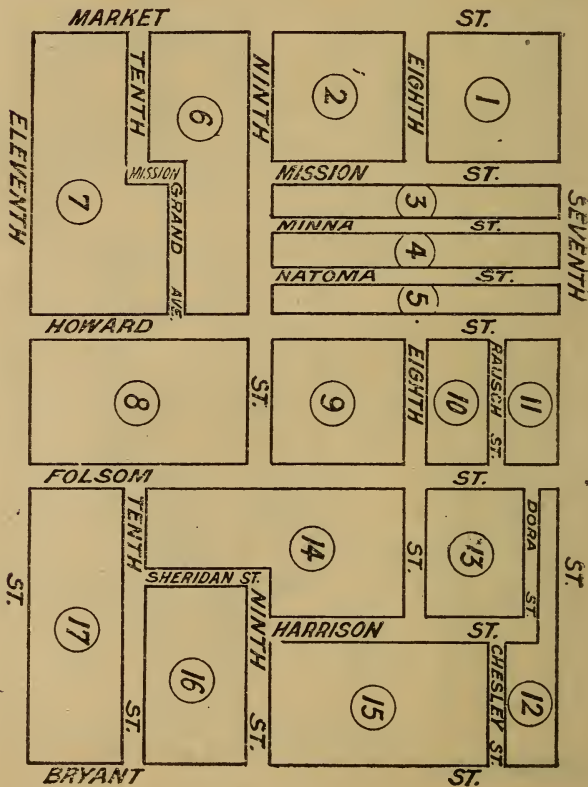
ELECTION PRECINCTS
OF
31ST ASSEMBLY DISTRICT

PART OF 23RD SENATORIAL DISTRICT AND PART
OF 4TH CONGRESSIONAL DISTRICT

CITY AND COUNTY OF
SAN FRANCISCO.

· 1894 ·

COPYRIGHT 1894 EDW. HOLLAND. COMMERCIAL HOTEL.

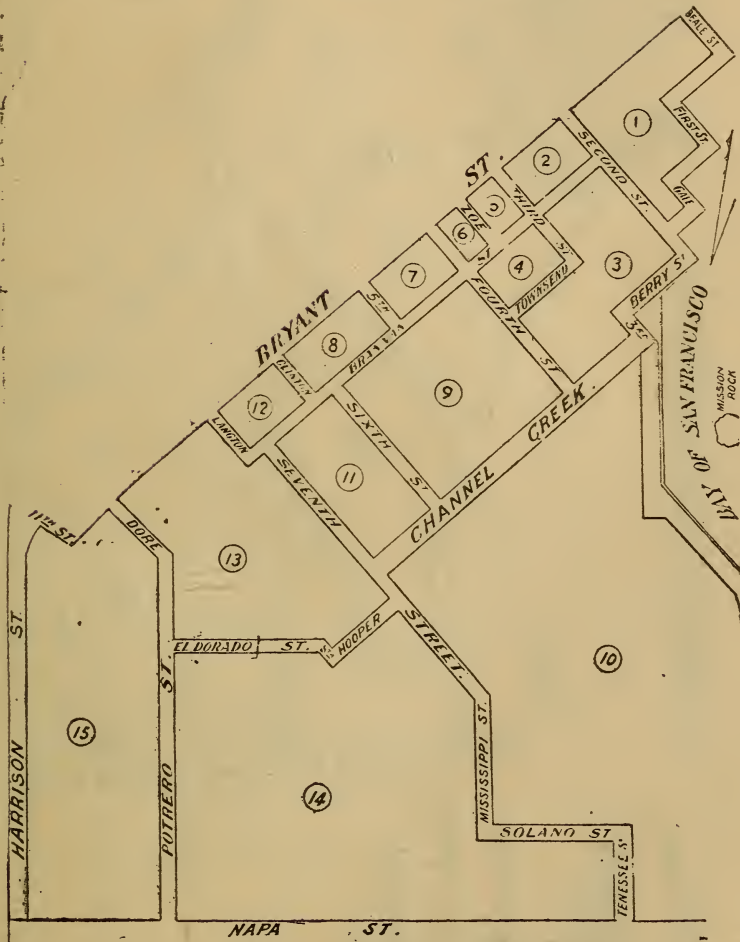


ELECTION PRECINCTS
32ND ASSEMBLY DISTRICT

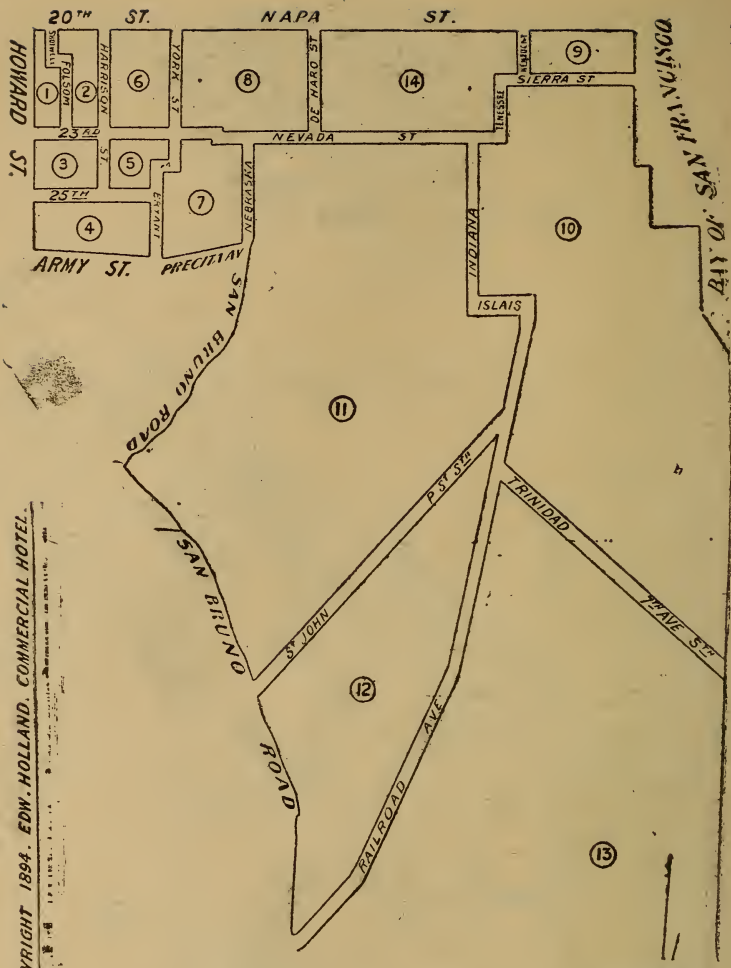
PART OF 18TH SENATORIAL DISTRICT AND PART
OF 4TH CONGRESSIONAL DISTRICT

CITY AND COUNTY OF
SAN FRANCISCO.

1894



COPYRIGHT 1894. EDW. HOLLAND. COMMERCIAL HOTEL.



Extends to Bay
Southern Boundary line of San Francisco County.

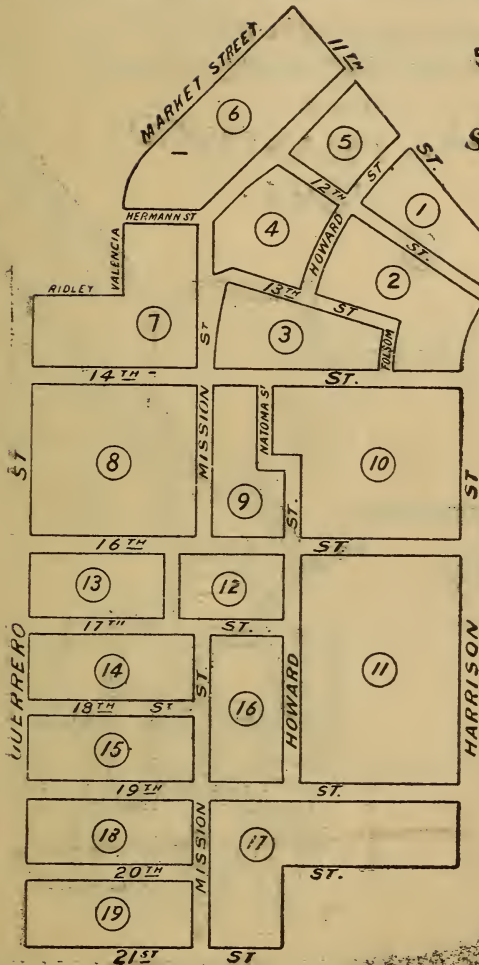
ELECTION PRECINCTS
OF
33RD ASSEMBLY
DISTRICT
PART OF
19TH SENATORIAL DISTRICT
AND PART OF
1ST CONGRESSIONAL DISTRICT
CITY AND COUNTY OF
SAN FRANCISCO
1894

ELECTION PRECINCTS
 PART OF
**34TH ASSEMBLY
 DISTRICT**

PART OF
**20TH SENATORIAL
 DISTRICT**

AND PART OF
**5TH CONGRESSIONAL
 DISTRICT**

CITY AND COUNTY OF
SAN FRANCISCO.
 1894.



Southern boundary of San Francisco County

ELECTION PRECINCTS OF 35TH ASSEMBLY DISTRICT

PART OF 19TH SENATORIAL DISTRICT AND PART
OF 5TH CONGRESSIONAL DISTRICT

CITY AND COUNTY OF
SAN FRANCISCO.
1894



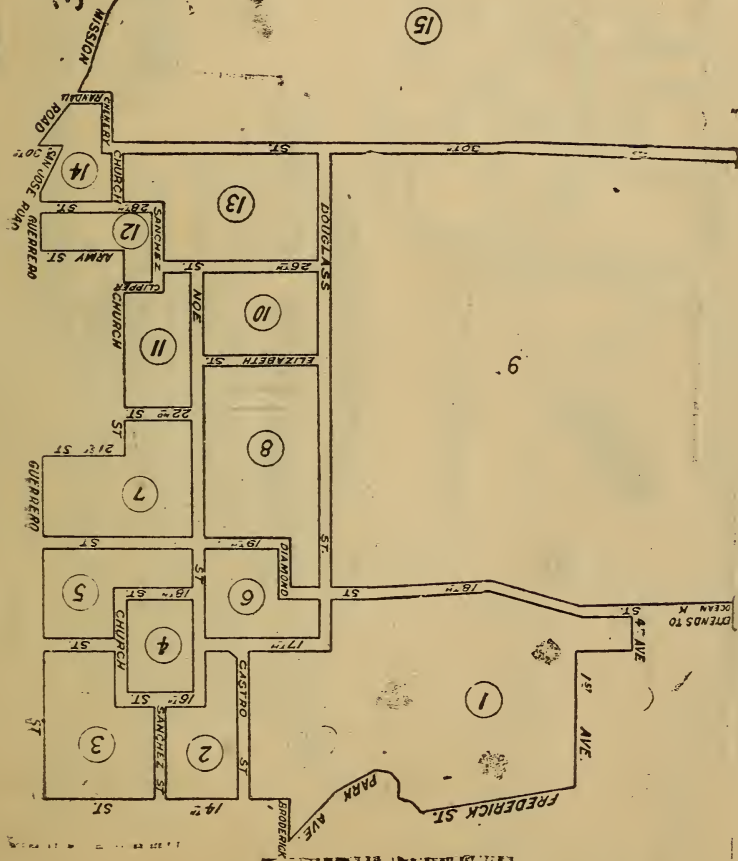
COPYRIGHT 1894 EDW. HOLLAND, COMMERCIAL HOTEL

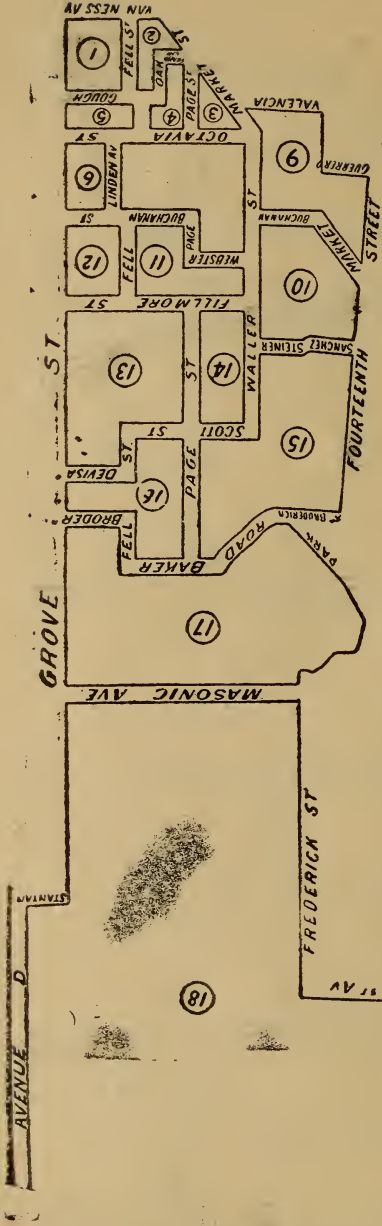
ELECTION PRECINCTS
OF
36TH ASSEMBLY DISTRICT

PART OF 20TH SENATORIAL DISTRICT AND PART
OF 5TH CONGRESSIONAL DISTRICT

CITY AND COUNTY OF
SAN FRANCISCO.

1894.





ELECTION PRECINCTS
OF
37TH ASSEMBLY DISTRICT

PART OF 21ST SENATORIAL DISTRICT AND PART
OF 5TH CONGRESSIONAL DISTRICT
CITY AND COUNTY OF

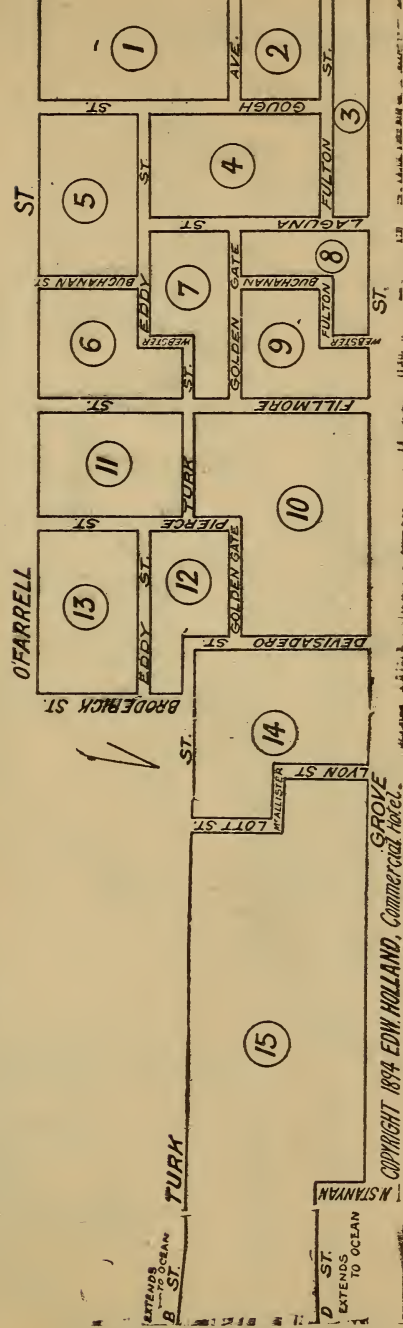
SAN FRANCISCO.

1894

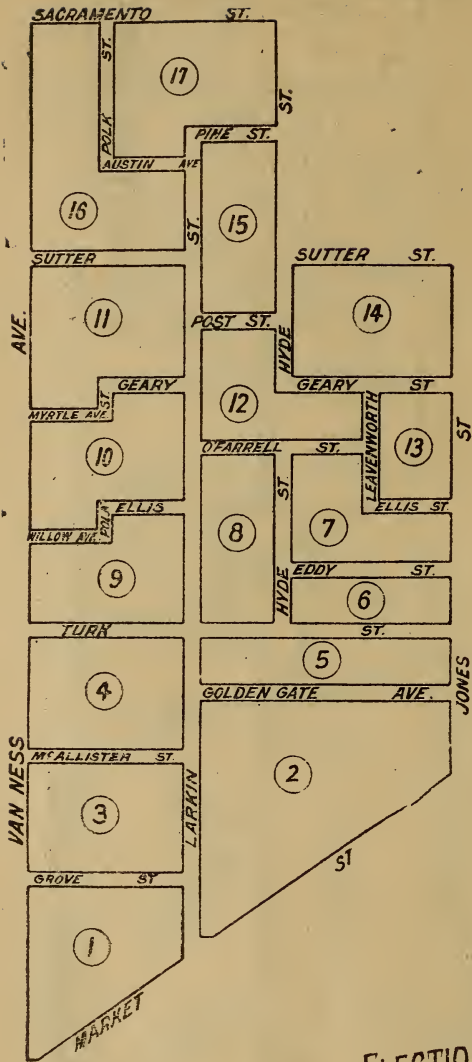
COPYRIGHT 1894, EDW. HOLLAND, COMMERCIAL HOTEL.

1894

ELECTION PRECINCTS
OF
38TH ASSEMBLY DISTRICT
PART OF 21ST SENATORIAL DISTRICT AND PART
OF 5TH CONGRESSIONAL DISTRICT
CITY AND COUNTY OF
SAN FRANCISCO.
1894.



GROVE
HOTEL
COPYRIGHT 1894 EDW. HOLLAND, Commercial Hotel.



ELECTION PRECINCTS
 OF THE
**39TH ASSEMBLY
 DISTRICT**

PART OF 23RD SENATORIAL DISTRICT AND PART
 OF 4TH CONGRESSIONAL DISTRICT

CITY AND COUNTY OF
SAN FRANCISCO.

ELECTION PRECINCTS

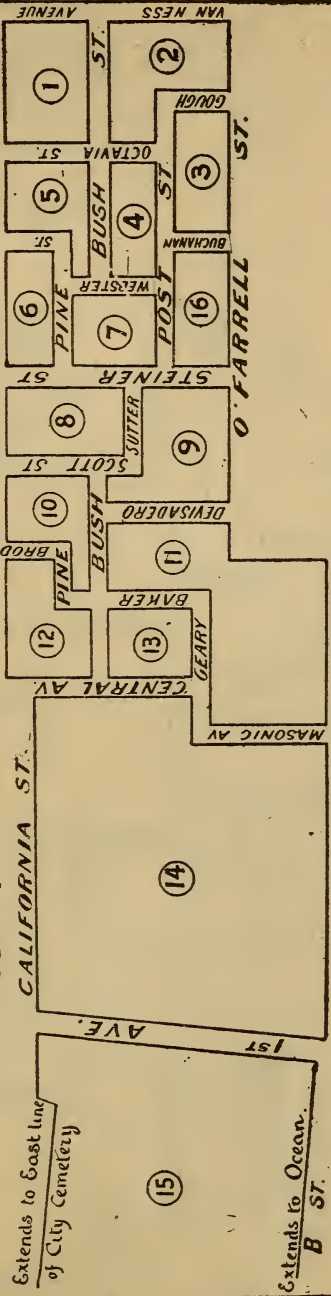
OF 40TH ASSEMBLY DISTRICT

PART OF 22ND SENATORIAL DISTRICT AND PART
OF 5TH CONGRESSIONAL DISTRICT

CITY AND COUNTY OF
SAN FRANCISCO.
1894.



*Precinct No. 1 includes
the Farallone Islands.*



TURK ST.
COPYRIGHT 1894. EDW. HOLLAND, COMMERCIAL HOTEL.

Extends to East line
of City Cemetery

Extends to Ocean.
B ST.

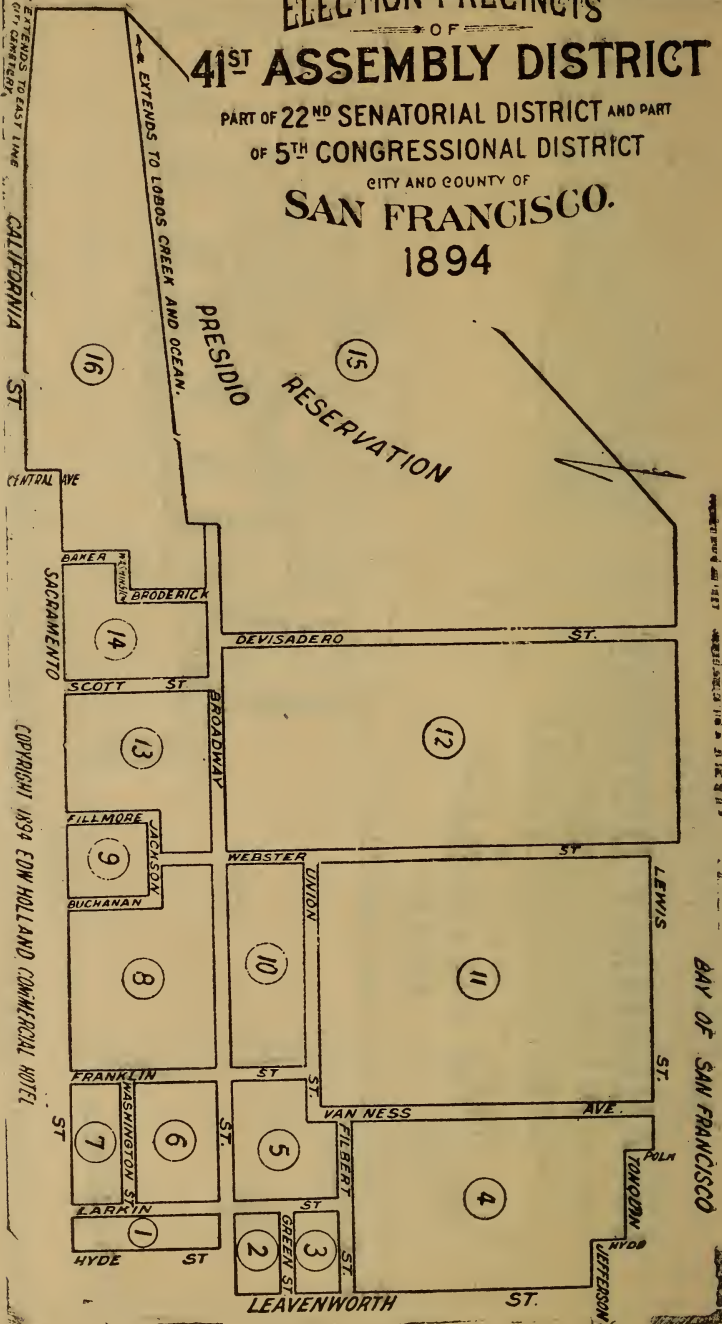
ELECTION PRECINCTS

OF
41ST ASSEMBLY DISTRICT

PART OF 22ND SENATORIAL DISTRICT AND PART
OF 5TH CONGRESSIONAL DISTRICT

CITY AND COUNTY OF
SAN FRANCISCO.

1894



EXTENDS TO EAST LINE OF CITY DIVISION

EXTENDS TO LOBOS CREEK AND OCEAN.

CENTRAL AVE

COPYRIGHT 1894 EDW HOLLAND COMMERCIAL HOTEL

PREPARED BY EDW HOLLAND 1106 & 1112 CALIF ST

BAY OF SAN FRANCISCO

ELECTION PRECINCTS

OF

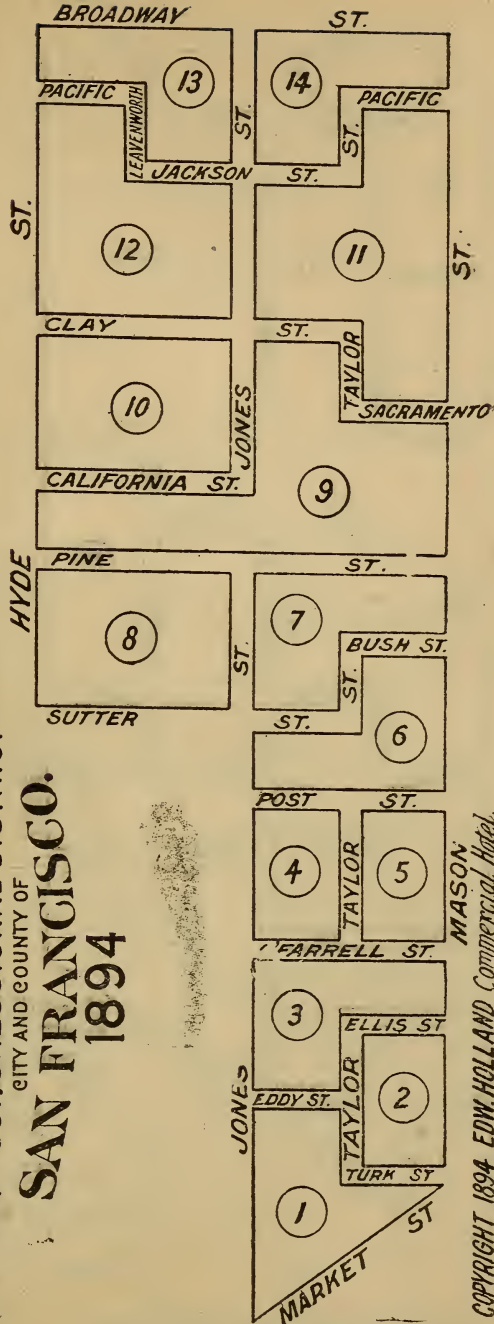
42ND ASSEMBLY DISTRICT

PART OF 24TH SENATORIAL DISTRICT AND PART

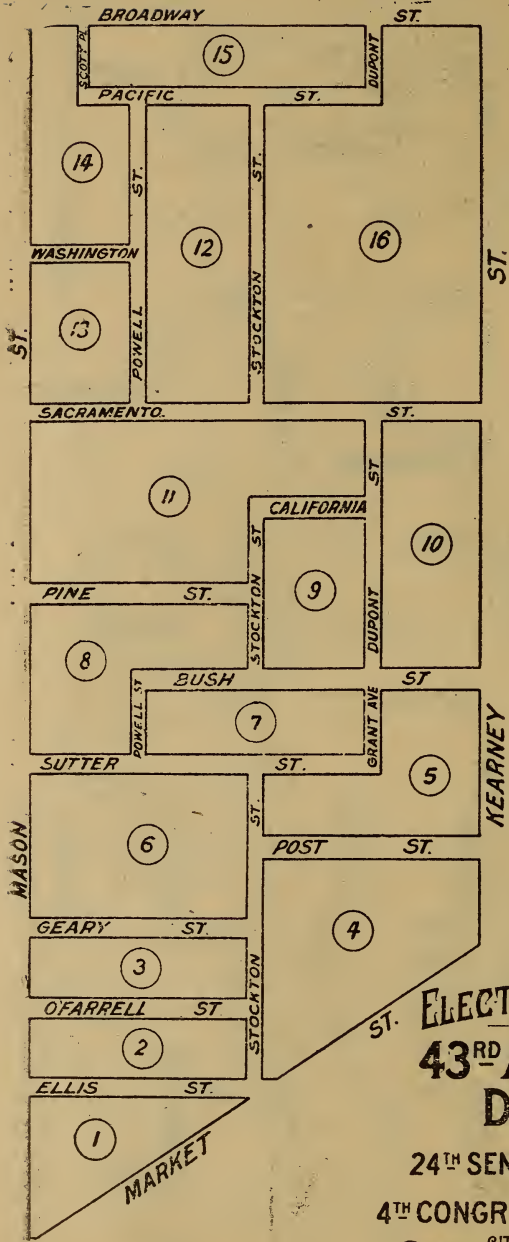
OF 4TH CONGRESSIONAL DISTRICT

CITY AND COUNTY OF

SAN FRANCISCO.
1894



COPYRIGHT 1894 EDW. HOLLAND Commercial Hotel.



ELECTION PRECINCTS
 OF
43RD ASSEMBLY
DISTRICT
 PART OF
 24TH SENATORIAL DISTRICT
 AND PART OF
 4TH CONGRESSIONAL DISTRICT
 CITY AND COUNTY OF
SAN FRANCISCO.

ELECTION PRECINCTS
OF
44TH ASSEMBLY DISTRICT

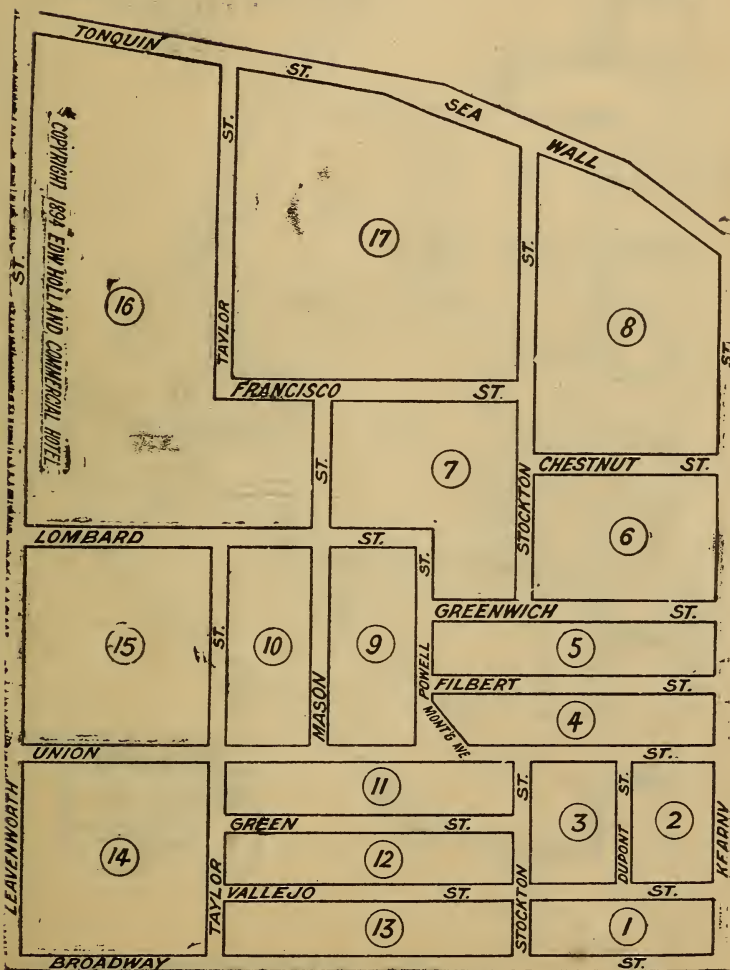
PART OF 25TH SENATORIAL DISTRICT AND PART

OF 4TH CONGRESSIONAL DISTRICT

CITY AND COUNTY OF

SAN FRANCISCO.

1894.



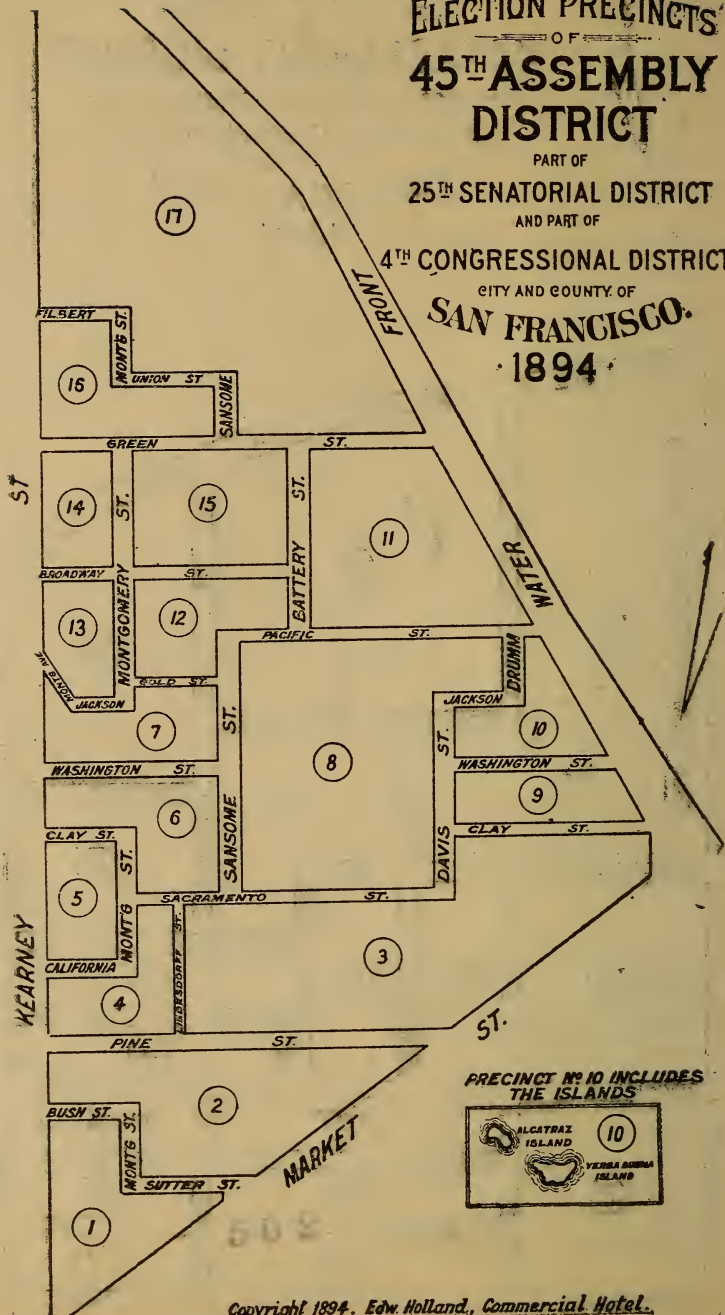
ELECTION PRECINCTS OF 45TH ASSEMBLY DISTRICT

PART OF
25TH SENATORIAL DISTRICT
AND PART OF

4TH CONGRESSIONAL DISTRICT
CITY AND COUNTY OF

SAN FRANCISCO.

1894.

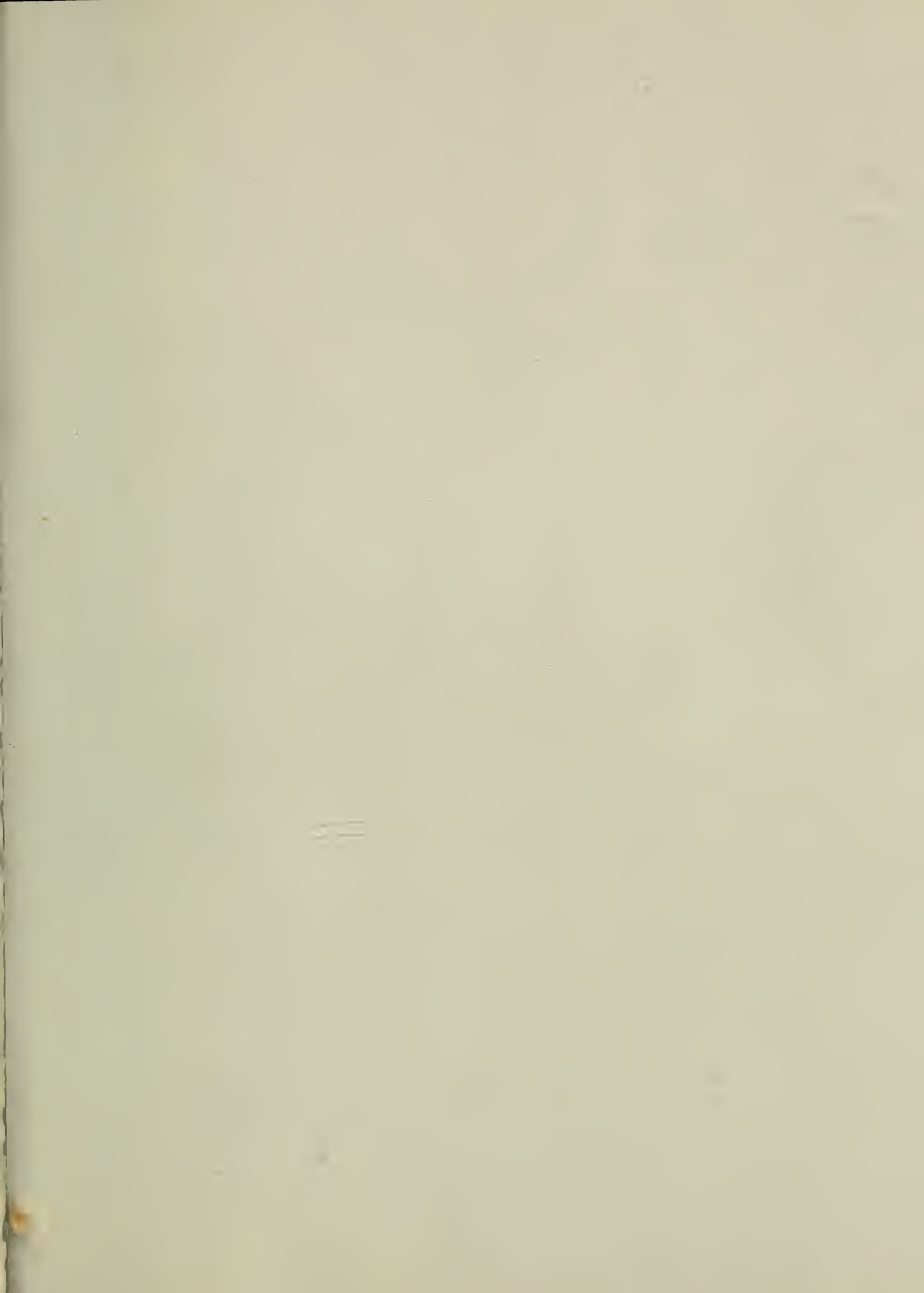


PRECINCT NO 10 INCLUDES
THE ISLANDS



139

502





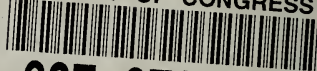


SEPT. 68



N. MANCHESTER,
INDIANA

LIBRARY OF CONGRESS



0 027 272 795 8