

wiki loves  
EARTH

Вікі любить  
Землю

2016





# Січень 2016 January



|    |   |    |    |    |    |    |
|----|---|----|----|----|----|----|
| ПН |   | 4  | 11 | 18 | 25 | МО |
| ВТ |   | 5  | 12 | 19 | 26 | TU |
| СР |   | 6  | 13 | 20 | 27 | WE |
| ЧТ |   | 7  | 14 | 21 | 28 | TH |
| ПТ | 1 | 8  | 15 | 22 | 29 | FR |
| СБ | 2 | 9  | 16 | 23 | 30 | SA |
| НД | 3 | 10 | 17 | 24 | 31 | SU |

Shangrila Lake. Central Karakoram National Park, Gilgit-Baltistan, Pakistan

ہمارے انعام یافتہ شنگریلا جھیل سے وابستہ ہیں جو کہ وسطی قراقرم نیشنل پارک

گلگت بلتستان ، پاکستان میں ایک مقبول سیاحتی مقام ہے۔

© Zaeem Siddiq (Zaeemsiddiq), CC-BY-SA-3.0





# Лютый 2016 February



---

|    |   |    |    |    |    |    |
|----|---|----|----|----|----|----|
| ПН | 1 | 8  | 15 | 22 | 29 | MO |
| ВТ | 2 | 9  | 16 | 23 |    | TU |
| СР | 3 | 10 | 17 | 24 |    | WE |
| ЧТ | 4 | 11 | 18 | 25 |    | TH |
| ПТ | 5 | 12 | 19 | 26 |    | FR |
| СБ | 6 | 13 | 20 | 27 |    | SA |
| НД | 7 | 14 | 21 | 28 |    | SU |

---

Morning in Tolkuse bog. Luitemaa Nature Conservation Area, Pärnu County, Estonia

Tolkuse raba, Luitemaa looduskaitseala, Pärnu maakond, Eesti

© Märt Kose, CC-BY-SA-3.0-EE





# Березень 2016 March



---

|    |   |    |    |    |    |    |
|----|---|----|----|----|----|----|
| ПН |   | 7  | 14 | 21 | 28 | MO |
| ВТ | 1 | 8  | 15 | 22 | 29 | TU |
| СР | 2 | 9  | 16 | 23 | 30 | WE |
| ЧТ | 3 | 10 | 17 | 24 | 31 | TH |
| ПТ | 4 | 11 | 18 | 25 |    | FR |
| СБ | 5 | 12 | 19 | 26 |    | SA |
| НД | 6 | 13 | 20 | 27 |    | SU |

---

The Alpine ibex (*Capra ibex*). Nationalpark Hohe Tauern, Carinthia, Austria

Steinbock (*Capra ibex*). Nationalpark Hohe Tauern, Kärnten, Österreich

© Bernd Thaller (Berndthaller), CC-BY-SA-3.0-AT







# Квітень 2016 April



---

|    |   |    |    |    |    |    |
|----|---|----|----|----|----|----|
| ПН |   | 4  | 11 | 18 | 25 | MO |
| ВТ |   | 5  | 12 | 19 | 26 | TU |
| СР |   | 6  | 13 | 20 | 27 | WE |
| ЧТ |   | 7  | 14 | 21 | 28 | TH |
| ПТ | 1 | 8  | 15 | 22 | 29 | FR |
| СБ | 2 | 9  | 16 | 23 | 30 | SA |
| НД | 3 | 10 | 17 | 24 |    | SU |

---

European bee-eater (*Merops apiaster*). Ichkeul National Park, Bizerte Governorate, Tunisia  
Guépier d'Europe (*Merops apiaster*). Parc National Ichkeul, gouvernorat de Bizerte, Tunisie

© Mohamed El Golli (Elgollimoh), CC-BY-SA-3.0





# Травень 2016 May



---

|    |   |    |    |    |    |    |
|----|---|----|----|----|----|----|
| ПН | 2 | 9  | 16 | 23 | 30 | MO |
| ВТ | 3 | 10 | 17 | 24 | 31 | TU |
| СР | 4 | 11 | 18 | 25 |    | WE |
| ЧТ | 5 | 12 | 19 | 26 |    | TH |
| ПТ | 6 | 13 | 20 | 27 |    | FR |
| СБ | 7 | 14 | 21 | 28 |    | SA |
| НД | 1 | 8  | 15 | 22 | 29 | SU |

---

Limestone stalagmites. Anhumas abyss, Bonito, Mato Grosso do Sul, Brasil.  
Estalagmites de calcário. Abismo Anhumas, Bonito, Mato Grosso do Sul, Brasil.

© Caio Vilela (Caioribeirovilela), CC-BY-SA-3.0





# Червень 2016 June



---

|    |   |    |    |    |    |    |
|----|---|----|----|----|----|----|
| ПН |   | 6  | 13 | 20 | 27 | MO |
| ВТ |   | 7  | 14 | 21 | 28 | TU |
| СР | 1 | 8  | 15 | 22 | 29 | WE |
| ЧТ | 2 | 9  | 16 | 23 | 30 | TH |
| ПТ | 3 | 10 | 17 | 24 |    | FR |
| СБ | 4 | 11 | 18 | 25 |    | SA |
| НД | 5 | 12 | 19 | 26 |    | SU |

---

View of the Laurisilva (Laurel Forest). Island of Madeira, Portugal.  
Foto tirada na zona protegida do Fanal. Ilha da Madeira, Portugal.

© Jorge Nelson Alves (Jnvalves), CC-BY-SA-3.0





# Липень 2016 July



---

|    |   |    |    |    |    |    |
|----|---|----|----|----|----|----|
| ПН |   | 4  | 11 | 18 | 25 | МО |
| ВТ |   | 5  | 12 | 19 | 26 | TU |
| СР |   | 6  | 13 | 20 | 27 | WE |
| ЧТ |   | 7  | 14 | 21 | 28 | TH |
| ПТ | 1 | 8  | 15 | 22 | 29 | FR |
| СБ | 2 | 9  | 16 | 23 | 30 | SA |
| НД | 3 | 10 | 17 | 24 | 31 | SU |

---

Sand Dune. Cultural Park of Ahaggar, Tamanrasset Province, Algeria.  
Dune de sable. Parc Culturel De l'Ahaggar, wilaya de Tamanrasset, Algérie

© Hamza-sia (image) & Julian Herzog (retouche), CC-BY-SA-3.0







# Серпень 2016 August



---

|    |   |    |    |    |    |    |
|----|---|----|----|----|----|----|
| ПН | 1 | 8  | 15 | 22 | 29 | MO |
| ВТ | 2 | 9  | 16 | 23 | 30 | TU |
| СР | 3 | 10 | 17 | 24 | 31 | WE |
| ЧТ | 4 | 11 | 18 | 25 |    | TH |
| ПТ | 5 | 12 | 19 | 26 |    | FR |
| СБ | 6 | 13 | 20 | 27 |    | SA |
| НД | 7 | 14 | 21 | 28 |    | SU |

---

North Coast of the island of Ushant. Parc naturel régional d'Armorique, Brittany, France

Côte nord de l'île d'Ouessant. Parc naturel régional d'Armorique, Bretagne, France

© Rémi Turban (RémiTurban), CC-BY-SA-3.0





# Вересень 2016 September



---

|    |   |    |    |    |    |    |
|----|---|----|----|----|----|----|
| ПН |   | 5  | 12 | 19 | 26 | MO |
| ВТ |   | 6  | 13 | 20 | 27 | TU |
| СР |   | 7  | 14 | 21 | 28 | WE |
| ЧТ | 1 | 8  | 15 | 22 | 29 | TH |
| ПТ | 2 | 9  | 16 | 23 | 30 | FR |
| СБ | 3 | 10 | 17 | 24 |    | SA |
| НД | 4 | 11 | 18 | 25 |    | SU |

---

Khlong Lan Waterfall, Khlong Lan National Park, Kamphaeng Phet Province, Thailand

น้ำตกคลองลาน อุทยานแห่งชาติคลองลาน จังหวัดกำแพงเพชร

© Suppachai Prachpiti (Khunkay)





# Жовтень 2016 October



---

|    |   |   |    |    |    |    |    |
|----|---|---|----|----|----|----|----|
| ПН |   | 3 | 10 | 17 | 24 | 31 | MO |
| ВТ |   | 4 | 11 | 18 | 25 |    | TU |
| СР |   | 5 | 12 | 19 | 26 |    | WE |
| ЧТ |   | 6 | 13 | 20 | 27 |    | TH |
| ПТ |   | 7 | 14 | 21 | 28 |    | FR |
| СБ | 1 | 8 | 15 | 22 | 29 |    | SA |
| НД | 2 | 9 | 16 | 23 | 30 |    | SU |

---

High Tatras as seen from the Polish Spisz. Tatry Natura 2000 Special Area of Conservation. Lesser Poland Voivodeship, Poland  
Tatry Wysokie widziane ze Spiszu Polskiego. Tatrzański Park Narodowy, Województwo małopolskie, Polska

© Łukasz Śmigasiewicz (Smiglyluk), CC-BY-SA-3.0-PL





# Листопад 2016 November



---

|    |   |    |    |    |    |    |
|----|---|----|----|----|----|----|
| ПН |   | 7  | 14 | 21 | 28 | МО |
| ВТ | 1 | 8  | 15 | 22 | 29 | TU |
| СР | 2 | 9  | 16 | 23 | 30 | WE |
| ЧТ | 3 | 10 | 17 | 24 |    | TH |
| ПТ | 4 | 11 | 18 | 25 |    | FR |
| СБ | 5 | 12 | 19 | 26 |    | SA |
| НД | 6 | 13 | 20 | 27 |    | SU |

---

Red Carpathians. Carpathian Biosphere Reserve, Zakarpattia Oblast, Ukraine

Червоні Карпатські гори. Карпатський біосферний заповідник, Закарпатська область, Україна

© Vitaliy Bashkatov (Vian) / Віталій Башкатов, CC-BY-SA-4.0







# Грудень 2016 December



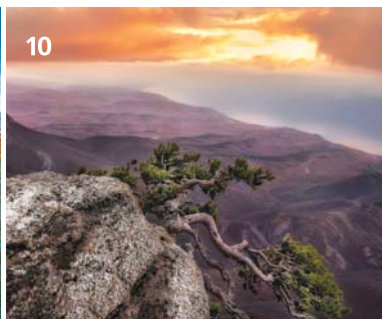
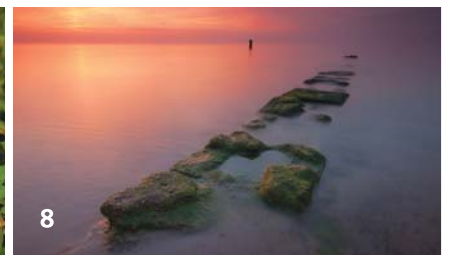
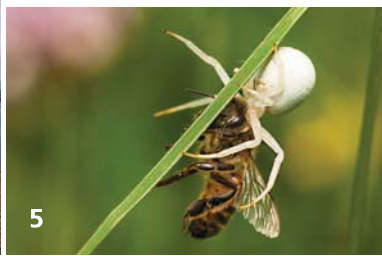
---

|    |   |    |    |    |    |    |
|----|---|----|----|----|----|----|
| ПН |   | 5  | 12 | 19 | 26 | MO |
| ВТ |   | 6  | 13 | 20 | 27 | TU |
| СР |   | 7  | 14 | 21 | 28 | WE |
| ЧТ | 1 | 8  | 15 | 22 | 29 | TH |
| ПТ | 2 | 9  | 16 | 23 | 30 | FR |
| СБ | 3 | 10 | 17 | 24 | 31 | SA |
| НД | 4 | 11 | 18 | 25 |    | SU |

---

Mount Hoverla as seen from Mount Kukul. Carpathian National Nature Park, Ivano-Frankivsk Oblast, Ukraine  
Говерла, як її видно з Кукула. Карпатський національний природний парк, Івано-Франківська область, Україна

© Robert Labchuk (Robert-Erik) / Роберт Лабчук, CC-BY-SA-4.0





# 2017



## January

**MO** 2 9 16 23 30  
**TU** 3 10 17 24 31  
**WL** 4 11 18 25  
**TH** 5 12 19 26  
**FR** 6 13 20 27  
**SA** 7 14 21 28  
**SU** 1 8 15 22 29

## February

**MO** 6 13 20 27  
**TU** 7 14 21 28  
**WL** 1 8 15 22  
**TH** 2 9 16 23  
**FR** 3 10 17 24  
**SA** 4 11 18 25  
**SU** 5 12 19 26

## March

**MO** 6 13 20 27  
**TU** 7 14 21 28  
**WL** 1 8 15 22 29  
**TH** 2 9 16 23 30  
**FR** 3 10 17 24 31  
**SA** 4 11 18 25  
**SU** 5 12 19 26

## April

**MO** 3 10 17 24  
**TU** 4 11 18 25  
**WL** 5 12 19 26  
**TH** 6 13 20 27  
**FR** 7 14 21 28  
**SA** 1 8 15 22 29  
**SU** 2 9 16 23 30

## May

**MO** 1 8 15 22 29  
**TU** 2 9 16 23 30  
**WL** 3 10 17 24 31  
**TH** 4 11 18 25  
**FR** 5 12 19 26  
**SA** 6 13 20 27  
**SU** 7 14 21 28

## June

**MO** 5 12 19 26  
**TU** 6 13 20 27  
**WL** 7 14 21 28  
**TH** 1 8 15 22 29  
**FR** 2 9 16 23 30  
**SA** 3 10 17 24  
**SU** 4 11 18 25

## July

**MO** 3 10 17 24 31  
**TU** 4 11 18 25  
**WL** 5 12 19 26  
**TH** 6 13 20 27  
**FR** 7 14 21 28  
**SA** 1 8 15 22 29  
**SU** 2 9 16 23 30

## August

**MO** 7 14 21 28  
**TU** 1 8 15 22 29  
**WL** 2 9 16 23 30  
**TH** 3 10 17 24 31  
**FR** 4 11 18 25  
**SA** 5 12 19 26  
**SU** 6 13 20 27

## September

**MO** 4 11 18 25  
**TU** 5 12 19 26  
**WL** 6 13 20 27  
**TH** 7 14 21 28  
**FR** 1 8 15 22 29  
**SA** 2 9 16 23 30  
**SU** 3 10 17 24

## October

**MO** 2 9 16 23 30  
**TU** 3 10 17 24 31  
**WL** 4 11 18 25  
**TH** 5 12 19 26  
**FR** 6 13 20 27  
**SA** 7 14 21 28  
**SU** 1 8 15 22 29

## November

**MO** 6 13 20 27  
**TU** 7 14 21 28  
**WL** 1 8 15 22 29  
**TH** 2 9 16 23 30  
**FR** 3 10 17 24  
**SA** 4 11 18 25  
**SU** 5 12 19 26

## December

**MO** 4 11 18 25  
**TU** 5 12 19 26  
**WL** 6 13 20 27  
**TH** 7 14 21 28  
**FR** 1 8 15 22 29  
**SA** 2 9 16 23 30  
**SU** 3 10 17 24 31

1 - A4ernyh, CC BY-SA 4.0  
 2 - Q-lieb-in, CC BY-SA 4.0  
 3 - Ptahhotep, CC BY-SA 4.0  
 4 - Jnvalves, CC BY-SA 3.0

5 - Suhaknoke, CC BY-SA 3.0  
 6 - Ddeveze, CC BY-SA 3.0  
 7 - KarlaFPaiva, CC BY-SA 3.0  
 8 - Łukasz Śmigasiewicz, CC BY-SA 3.0 PL

9 - Vian, CC BY-SA 4.0  
 10 - Сак Анастасія, CC BY-SA 4.0  
 11 - Jmhullot, CC BY-SA 3.0  
 12 - Rudi234, CC BY-SA 3.0 AT

13 - Elgollimoh, CC BY-SA 3.0  
 14 - GeKo15, CC BY-SA 3.0 AT  
 15 - Aneta Pawaska, CC BY-SA 3.0 PL  
 16 - Boris Solovyev, CC BY-SA 4.0

**Wiki Loves Earth** is an international photography competition that took place in 2015 for the third time, with **natural protected areas** as a subject.

The goal of this contest is, on one hand, to get as many participants as possible to picture protected natural areas and upload their photos to Wikimedia Commons, and on the other hand, to contribute to nature protection by raising public awareness. These pictures are used to illustrate articles on Wikipedia and other Wikimedia projects (Wikivoyage, Wikidata etc.). This contest was first organised in Ukraine in 2013 and became international in 2014.



The focus is on the widest variety of natural sites possible, whatever is protected in a country on national and regional levels. This means that most users are able to find several natural heritage sites close to them.

In 2015 Wiki Loves Earth expanded its geography to 26 countries, including very active newcomers like Pakistan, Russia or Poland. Most of countries organised the contest from 1 May to 31 May 2015, while some countries extended the contest period till 30 June. During the contest over 108,000 pictures were submitted by more than 8,900 participants.



All pictures of Wiki Loves Earth are free for further use, distribution and modification under the terms of the Creative Commons Attribution-ShareAlike (CC-BY-SA) 4.0 license. Read more at <http://creativecommons.org/licenses/by-sa/4.0/>

Text by Mykola Kozlenko and Vira Motorko. Texts and layout are available under CC-BY-SA 4.0.

© & TM Wikimedia® and Wikipedia® are registered trademarks of Wikimedia Foundation, Inc.



**Paper from  
responsible sources**