

ノ處ニ強潮流ノ影響ナキ好錨地アリ。

Little Adolphus Island Lacey Island ノ北方約2.5 鏈ナル珊瑚礁上ニ在リテ矮樹及叢林ニ蔽ハル◎此ノ島ノ西端附近ニ在ル島頂ハ高サ42 米ナリ。

Salter Island Little Adolphus Island ノ東方約5 鏈ニ在リ、高サ34 米、其ノ頂ハ平滑ナリ◎ Reid Rock ハ更ニ東方約3 鏈ニ位シ其ノ高サ9.1 米ナリ。

Little Adolphus Island ノ西方2 鏈及9 鏈ノ間ニ水深9.1 米(5 尋)ノ1 堆アリ、此ノ堆上ニ水深5.5 米(3 尋)以下ノ淺水點礁存在シ、又其ノ北東端附近
10 = 1.2 米(4 呎)ノ最小水深アリ。

Little Adolphus Island ノ北方約1 哩ニ水深1.8 米(6 呎)以下ノ1 岩存在ストノ報告アリシモ其ノ存在疑ハシ。

Alpha Rock Alpha Rock ハ高サ18 米ノ岩嶼ニシテ Cape York (Long. 142° 32' E., Lat. 10° 41' S.) ノ北方約4.5 哩ニ在リ◎此ノ岩ハ其ノ兩側何レモ約5 鏈ノ距離ニテ通過シ得ベク、而シテ西方ヨリ Adolphus Channel 又ハ Albany Pass ニ近接スル時、反對方向ヨリ Endeavour Strait ニ向フトキノ好目標ナリ(第332 頁對面對景圖第48 參照)◎濠洲沿岸水路誌第3 卷參照。

潮流 Adolphus Channel ニ於ケル漲潮流ハ北西方ニ、落潮流ハ南東方ニ向ヒ、兩流共大潮時ノ流速2-4 節ニ達ス。

20 潮流強勢ナルトキニハ海峽内多數ノ場所ニ激湍及渦流ヲ生ジ恰モ險惡地ノ觀アルモ Mid Rock 及 Quetta Rock ノ兩岩ノミ已知險礁ナリ。

潮流強勢ナルトキハ Albany Rock 沖ノ海面猛烈ニ混亂ス。

海方ヨリ Mount Adolphus Island ノ方ニ向フ西流ハ Adolphus Channel ヲ流過シ來ル北西流ト相會シ以テ各淺瀬上及各突出角沖ニ烈シキ湍潮ヲ生ズ◎此ノ潮流ハ大潮時此ノ群ノ各島間ニ於テ著シキ流勢ニ達ス。

針路法 Adolphus Channel ヲ通過シテ北進スル船舶ハ Wyborn 燈臺ヲ 226 度 1.5 哩ニ見ル地點ヨリ Albany Rock 燈臺ヲ 297 度ニ見ル如ク變針シ約

8 哩航進、同燈臺ヲ距ル3 哩ノ處ヨリ針路323 度ニテ Albany Rock ト Middle Brother トノ略中間ヲ航過後 Middle Brother ト North Brother 南端トヲ一線123 度ニ見テ之ヲ船尾一線ニ保航セバ Quetta Rock ト Mid Rock トノ略中間ヲ通過シ得ベシ◎ Mid Rock ヲ航過後ハ必要ニ應ジ Prince of Wales Channel ヲ通過スルモノハ Alpha Rock ノ北東方ヲ通過スル如ク、又 Endeavour Strait ヲ通過スルモノハ Cape York ノ北方ヲ通過スル如ク變針シ得ベシ、Torres Strait ヲ通過スル此等水道ニ對スル針路法ハ濠洲沿岸水路誌第3 卷ニ記載シアリ。

濠洲沿岸水路誌第4 卷終

船渠、船臺要目表

港名	渠名	渠ノ彎曲部若ハ堅固長サヲ示ス	渠口ノ幅		基準水面ヨリノ距離	大湖			船臺			事記
			冠石上†(3)	大潮ノ平均上†(4)		渠口底(5)	渠口(6)	渠奥(7)	盤最大(9)	水上深(10)	扛舉力(11)	
Rockhampton 船臺		米	米	米	米	米	米	米	米	米	噸	低潮面上1.5米以シテ船長63米以内、船梁11.5米、766噸ノ船舶ヲ引揚ゲ得。
Townsville 乾船渠		米	米	米	米	米	米	米	米	米	噸	船架ハ修繕状態良好ナラズ、船長44米、船梁10米、389噸ノ船舶ヲ引揚ゲ得。

(備考) * 印ハ浮船渠、船架ノ場合ハ(1)ハ最大ノ長サ、(2)ハ船臺又ハ船框ノ長サヲ表ハス。
 † 印ハ浮船渠ノ場合ハ(3)ハ上部ノ幅、(4)ハ底部ノ幅ヲ、又船架ノ場合ハ(3)ハ船框ノ幅ヲ表ハス。
 ‡ 印ハ渠口底上ノ深サヲ知ル爲(5)(6)及(7)欄ノ數量ハ潮汐表若ハ計算上ヨリ得タル潮高ニ附加スルコト符號ニ從フ。

附表第2

Rockhampton 氣象表

(Long. 150° 30' E., Lat. 23° 24' S.) (24-66年間ノ觀測)

平均水面上ノ高サ11米

月次	氣壓(耗)平均面上		氣溫(攝氏度)				濕度(%) †	雲量	降雨		風						強風日數	霧日數												
	平均	日差 †	日平均		月平均				極高	極低	平均量(耗)	日數 §	最大量(耗)	風向百分比																
			最高	最低	最高	最低	北東	南東						南西	北西	無風														
1	756.8	2.3	27.2	31.7	22.2	37.2	19.4	41.7	16.1	69	6.1	195.6	12	266.7	—	—	—	—	—	—	—	—	—	—	—					
2	757.6	2.0	26.7	31.1	22.2	36.1	19.4	40.6	16.1	70	5.6	195.6	11	388.6	—	—	—	—	—	—	—	—	—	—	—					
3	759.1	2.2	26.1	30.6	21.1	35.6	17.8	40.6	10.0	71	4.9	109.2	10	157.5	—	—	—	—	—	—	—	—	—	—	—					
4	761.3	2.8	23.9	28.8	18.3	33.3	12.8	36.7	6.1	69	3.7	63.5	7	91.4	—	—	—	—	—	—	—	—	—	—	—					
5	762.8	2.8	20.6	26.1	14.4	30.0	8.3	34.4	4.4	68	3.2	40.6	6	76.2	—	—	—	—	—	—	—	—	—	—	—					
6	763.6	2.4	17.8	23.3	12.2	28.3	5.6	31.1	0.6	73	3.9	66.9	7	175.3	—	—	—	—	—	—	—	—	—	—	—					
7	763.6	2.8	16.7	22.8	10.0	27.8	4.4	31.7	1.7	71	2.8	45.7	5	292.1	—	—	—	—	—	—	—	—	—	—	—					
8	764.3	2.6	18.3	25.0	11.7	29.4	5.6	34.4	2.2	67	2.6	20.3	4	40.6	—	—	—	—	—	—	—	—	—	—	—					
9	762.8	2.5	21.1	27.8	14.4	32.8	9.4	37.8	6.7	64	3.5	33.0	4	88.9	—	—	—	—	—	—	—	—	—	—	—					
10	761.3	3.1	23.9	30.0	17.8	35.6	12.8	39.4	7.2	60	4.4	45.7	5	86.4	—	—	—	—	—	—	—	—	—	—	—					
11	759.8	2.8	25.6	31.1	20.0	36.7	16.1	40.6	12.8	61	5.2	61.0	8	73.7	—	—	—	—	—	—	—	—	—	—	—					
12	757.6	2.8	27.2	32.2	21.7	38.3	17.8	44.4	15.0	63	5.5	121.9	10	134.6	—	—	—	—	—	—	—	—	—	—	—					
平均	760.6	2.6	22.8	28.3	17.2	39.4*	3.9*	—	—	67	4.3	—	—	—	—	—	—	—	—	—	—	—	—	—	—					
總計	—	—	—	—	—	—	—	—	—	—	—	999.1	89	—	—	—	—	—	—	—	—	—	—	—	—	—				
極值	—	—	—	—	—	—	—	44.4	0.6	—	—	—	—	388.6	—	—	—	—	—	—	—	—	—	—	—	—				
觀測年數	46	46	38													66	24	66	—	—	—	—	—	—	—	—	—	—	—	—

(備考) 觀測時刻 0900, 1500 † ‡ (最高+最低) † ‡ 0900ノ觀測 † ‡ 最高及最低氣壓時間ノ平均差 § 0.2耗以上ノ降雨日

* 每年最高ノ平均 * 每年最低ノ平均

附表第3

Townsville 氣象表

(Long. 146° 51' E., Lat. 19° 14' S.) (21-66年間ノ觀測)

平均水面上ノ高サ15米

月次	氣壓(耗)平均面上		氣溫(攝氏度)				濕度(%) †	雲量	降雨		風						強風日數	霧日數													
	平均	日差 †	日平均		月平均				極高	極低	平均量(耗)	日數 †	最大量(耗)	風向百分比																	
			最高	最低	最高	最低	北東	南東						南西	北西	無風															
1	755.3	2.0	27.2	30.6	24.4	33.9	21.1	40.0	18.9	73	5.8	279.3	13	487.7	—	—	—	—	—	—	—	—	—	—	—	—					
2	756.8	2.0	27.2	30.6	23.9	33.3	21.1	40.6	18.3	73	6.0	287.0	12	221.0	—	—	—	—	—	—	—	—	—	—	—	—					
3	757.6	2.0	26.7	30.0	22.8	32.8	20.0	35.0	16.1	71	5.6	182.9	11	129.5	—	—	—	—	—	—	—	—	—	—	—	—					
4	759.8	2.3	25.0	28.9	20.6	31.7	17.2	33.9	13.3	67	4.8	85.4	5	117.8	—	—	—	—	—	—	—	—	—	—	—	—					
5	761.3	2.5	22.2	26.7	17.8	29.4	12.2	32.2	9.4	65	4.4	33.0	4	114.3	—	—	—	—	—	—	—	—	—	—	—	—					
6	762.1	2.3	20.6	25.0	16.1	27.2	9.4	28.9	5.0	67	5.0	35.6	4	91.4	—	—	—	—	—	—	—	—	—	—	—	—					
7	762.8	2.5	19.4	23.9	14.4	27.2	8.3	28.9	5.6	65	3.7	15.2	2	83.8	—	—	—	—	—	—	—	—	—	—	—	—					
8	763.6	2.5	20.0	25.0	15.6	27.8	10.6	29.4	7.2	64	3.8	12.7	2	40.6	—	—	—	—	—	—	—	—	—	—	—	—					
9	762.1	2.7	22.2	26.1	18.3	30.6	13.3	34.4	11.1	64	4.3	20.3	2	63.5	—	—	—	—	—	—	—	—	—	—	—	—					
10	761.3	2.7	24.4	27.8	21.1	31.1	16.7	34.4	11.7	65	4.5	33.0	4	203.2	—	—	—	—	—	—	—	—	—	—	—	—					
11	759.1	2.5	26.1	28.9	22.8	32.2	19.4	38.33	17.2	66	4.9	48.3	6	132.1	—	—	—	—	—	—	—	—	—	—	—	—					
12	756.8	2.3	27.2	30.0	23.9	33.3	21.1	38.33	18.3	71	5.7	139.7	11	381.0	—	—	—	—	—	—	—	—	—	—	—	—					
平均	759.8	2.4	23.89	27.8	20.0	35.6*	7.8*	—	—	68	4.9	—	—	—	—	—	—	—	—	—	—	—	—	—	—	—					
總計	—	—	—	—	—	—	—	—	—	—	—	1173.5	76	—	—	—	—	—	—	—	—	—	—	—	—	—	—				
極值	—	—	—	—	—	—	—	40.6	5.0	—	—	—	—	487.7	—	—	—	—	—	—	—	—	—	—	—	—	—				
觀測年數	—	—	21													66	24	66	—	—	—	—	—	—	—	—	—	—	—	—	—

(備考) 觀測時刻 0900, 1500 † ‡ (最高+最低) † ‡ 0900ノ觀測 † ‡ 最高及最低氣壓時間ノ平均差 § 0.2耗以上ノ降雨日

* 每年最高ノ平均 * 每年最低ノ平均

Willis Island 氣象表

(Long. 149° 59' E. Lat. 16° 18' S.) (1922-1936年ノ15年間ノ觀測) 平均水面上ノ高サ8.5米

月次	氣壓(耗)均面上		氣溫(攝氏度)				濕度(%) †	雲量	降雨		風						強風日數	霧日數							
	平均	日差 †	日平均		月平均				極高	極低	平均量(耗)	日數 φ	最大量(耗)	風向百分比											
			最高	最低	最高	最低	北	北東						南東	南	南西	西	西北	無風						
1	755.3	1.6	27.8	30.6	25.6	31.7	23.3	33.3	21.7	82	5.7	13	119.4	10	9	22	26	9	2	6	11	5	3	0	
2	755.3	1.7	27.8	30.0	25.6	31.7	23.3	32.8	21.7	84	6.2	15	330.2	7	10	22	28	13	3	4	8	5	2	0	
3	756.8	1.8	27.2	29.4	25.0	31.1	22.8	32.2	21.1	82	5.8	16	149.9	4	5	26	49	8	1	1	3	3	1.5	0	
4	757.6	2.0	26.7	28.9	24.4	30.0	22.2	31.7	20.0	81	5.8	13	231.1	1	3	19	61	12	1	0	1	2	3	0	
5	759.8	2.0	25.6	27.2	23.3	28.9	21.1	30.0	20.0	78	5.2	10	246.4	0	1	19	65	13	1	0	0	1	3	0	
6	760.6	2.0	24.4	26.1	22.2	27.8	20.0	28.3	17.2	77	5.0	9	99.1	1	2	19	55	17	3	2	0	1	2	0	
7	760.6	2.0	23.3	25.6	21.7	27.2	19.4	27.8	18.9	74	5.1	8	88.9	0	1	26	60	19	1	0	1	2	0.9	0	
8	761.3	2.1	23.9	26.1	21.7	27.2	19.4	28.3	18.9	74	4.5	3	45.7	0	1	27	59	11	1	0	0	1	0.4	0	
9	760.6	2.2	24.4	27.2	22.2	28.9	20.0	30.0	18.9	74	4.0	4	73.7	1	2	28	58	8	1	0	0	2	0.9	0	
10	759.8	2.1	26.1	28.3	23.3	29.4	21.7	31.1	20.6	75	3.6	3	63.5	1	2	34	48	10	1	0	0	4	0.4	0	
11	758.3	1.9	26.7	29.4	24.4	31.1	22.2	32.2	20.6	75	4.2	6	119.4	2	3	32	50	4	0	2	1	6	0.7	0	
12	756.1	1.7	27.8	30.6	25.6	31.7	23.3	33.3	21.7	80	4.9	9	170.2	6	10	31	31	7	3	2	4	6	0.3	0	
平均	758.3	2.0	26.1	28.3	23.9	32.2*	18.9*	—	—	78	5.0	—	—	3	4	25	49	11	2	1	2	3	—	—	
總計	—	—	—	—	—	—	—	—	—	—	—	—	—	—	—	—	—	—	—	—	—	—	—	—	—
極值	—	—	—	—	—	—	—	33.3	17.2	—	—	—	330.2	—	—	—	—	—	—	—	—	—	—	—	—

(備考) 觀測時刻 11 至 4 月 0600, 2100 † 最高ノ最低ノ平均 ‡ 最高ノ最低ノ平均 § 0900, 1500ノ觀測 ¶ 0900ノ觀測
 † 最高及最低氣壓時間ノ平均差 ‡ 最高及最低氣壓時間ノ平均
 * 每年ノ最高ノ平均 * 每年ノ最低ノ平均

地名索引

Abbey Peak	273
Abbey, Westminster	213
Abbot Bay	188
Abbot Point	188
Acacia Islet	147
Acheron Island	205
Ada Bank	257
Ada Reef	312
Adam Range	296
Adelaide Point	181
Adelaide Reef	211
Admiralty Island	236
Adolphus Channel	331
Adolphus Island, Little	336
Adolphus, Mount	334
Age Reef	288
Agnes Islet	214
Ai Reef	313
Aich Reef	313
Aid Reef	283
Aitch Reef	262
Akens Island	95
Akone Islet	334
Alarm Reef	135
Albany Island	327
Albany Pass	327
Albany, Port	328
Albany Rock	331
Albatross Cove	305
Alderley Point	282
Alert Bank	164
Alexandra Bay	247
Alexandra, Mount	246
Alexandra Reefs {Broad Sound}	107
Alexandra Reefs {Mowbray River}	242
Alfred Point	331
Allandale Island	99
Allen Reef	299
Alligator Creek {Cleveland Bay}	197
Alligator Creek	148
{Hillsborough Channel}	148
Allonby Island	154
Alma, Port	78
Almora Islet	164
Alnwick Island	99
Alpha Rock	336
Altanmoui Range	269
Alva Creek	190
Amos, Mount	249
Ana Branch	190
Anchor Cay	7
Anchor Islands	155
Anchor Point	173
Anchorsmith Island	156
Andrew Reef	312
Ann Islet	159
Annan River	252
Annie Islet	92
Anvil Island	156
Ape Reef	306
Apline Islet	324
Apostle Bay	175
Aquila Islet	109
Ar Reef	270
Arch Rock	74
Archer, Mount	71
Archer Point	251
Archer Rock	334
Arethusa Point	331
Ariel Bank	326
Arkhurst Islet	172
Arlington Reef	258
Armit Creek	226
Armit Islands	177
Arnold Islet	325
Arthur, Mount	231
Arthur Patches	211
Arthur Point	94
Ashton Rock	303
Aspatia Island	151

	頁		頁
Atherton, Mount	84	Barren Islet, South	105
Atkinson Reef	283	Barrier Reefs, Great	41
Auckland Creek	63	Barron River	239
Auckland Point	63	Barrow Islets	270
Avoid Isle	108	Barrow Point	270
Aye Reef	288	Barubbra Island	49
Aylen Hills	309	Base Point	166
Aylen Patch	274	Basin Creek	117
Aylen Peak	309	Bassett, Mount	139
		Bathurst Bay	279
		Bathurst Head	279
Babiaca Summit	170	Bathurst Range	279, 284
Baffle Creek	54	Batt Reef	259
Bailay Creek	247	Battle Bay	123
Bailay Hill	246	Bauer Inlet	249
Bailay Point	246	Baxendell Shoal	153
Bailey Islet	151	Bay Hill {Bathurst Bay}	279
Baird Islet	313	Bay Hill {Clump Point}	224
Baird Point	172	Bay Islet	95
Bait Reef	180	Bay Point	333
Baker Creek	137	Bay Point, North	272
Balaklava Island	79	Bay Rock	199
Balclutha River	286	Baynham Islet	158
Bald Hill {Abbot Point}	188	Be Reef	283
Bald Hill {Forsberg Point}	251	Beabey Hill	272
Bald Hill {Shoal Water Bay}	94	Beabey Patches	287
Bald Islet {Bowling-green Bay}	194	Beach Hill	189
Bald Islet {Broad Sound}	109	Beak, The	164
Bald Rock	75	Beale Creek	120
Ball Hill	165	Beanley Island	275
Bamborough Island	102	Beatrice Reef	270
Bamborough Shoal	102	Beaufort, Mount	243
Bank Bay, Sand	105	Beaver Reef	210
Barber Islet	206	Beaver Shoal	130
Bare Hill	296	Bedford, Cape	256
Bare Islet	194	Bedford, South Cape	256
Barnard Group	226	Bedwell Group	125
Barnard Islands	225	Bee Reef	250
Barnett Rock	98	Beesley Islet	313
Barney Point	63	Bell Bank	291
Baron Reef	271	Bell Cay	48
Barra Castle Hill	214	Bell Peak	66
Barratta	193	Bell Peaks	233
Barratta Creek	193	Bell Rocks, Blue	310
Barren Island	75	Bellenden Ker Mountains	231
Barren Islet	105	Bellingham Sand	102

	頁		頁
Bellows Islet	156	Bluff Point {Keppel Bay}	73
Bell's Creek	137	Bluff, The	
Ben Lomond	181	{Hinchinbrook Island}	220
Bennett Rock	184	Bluff, The {Murray River}	222
Bentley, Mount	206	Blunt Bay	123
Beor Reef	257	Boat Islet	123
Berserker, Mount	71	Boat Rock	73
Bertha, Mount	176	Bobardt Point	298
Berwick Island	97	Bolt Head	312
Bevelac Island	131	Bolton Hill	170
Beverley Group	129	Bolton Shoal	153
Beware Rocks	108	Bond	144
Bewick Island	272	Bonner Rock	260
Bih Reef	306	Boomerang Shoals	102
Billy Rock	126	Bootie Islet	318
Binstead Islet	301	Border Island	175
Bird Islands	321	Bosanquet Hill	320
Bird Islet {Rodd Harbour}	57	Botte, Pieter	247
Bird Islet		Boulder Reef	253
{Stonehaven Anchorage}	173	Boulder Rock	274
Bishop Point	329	Boult Reef	43
Bishops Peak	213	Bouth Head	49
Bizant River	285	Bow Reef	300
Black Head	69	Bowden Islet	223
Black Islet	173	Bowden Reef	209
Black Rock {Cape Kimberley}	246	Bowden Rock	334
Black Rock {Duke Islands}	100	Bowen	187
Black Rock {Port Clinton}	86	Bowen, Cape	269
Black Swan Rock	105	Bowen, Mount	213
Blackbird Patches	252	Bowen, Port of	181
Blackbird Shoal	127	Bowling-green	193
Blackcombe Island	155	Bowling-green Bay	190, 193
Blackney Point	57	Bowling-green, Cape	190
Blacksmith Island	156	Boydong Cays	322
Blackwater Creek	54	Boydong Island	322
Blackwood Bank	335	Boydong Island, Little	322
Blackwood Bay	335	Boyle Reef	112
Blackwood Island	281	Boyne Creek	58
Blackwood, Mount	145	Boyne Island	60
Blackwood Shoals	146	Boyne River	60
Blanchard Reef	295	Bramble Reef	210
Blind Rock	93	Bramble Rock	205
Bloomfield River	248	Brampton Island	152
Blue Bell Rocks	310	Bramston, Mount	183
Bluff Islet	127	Bramston Point	231
Bluff Point {Gloucester Island}	177	Bray Islet	194

	頁		頁
Breakfast Creek	289	Burkitt Island	292
Breaksea Spit	42	Burkitt Roads	111
Bremer, Mount	332	Burnett, Mount	214
Bremner Point	198	Burnett River	48
Bremner Shoal	316	Burnett Rock	98
Bresnahan Island	225	Burning Point	160
Brew Shoal	46	Bush Islet {Adolphus Channel}	332
Brewer Reef, John	210	Bush Islet {Broad Sound}	106
Briggs Reef	212	Bushy Islet {Hannibal Islands}	321
Brisk Bay	181	Bushy Islet {Orfordness}	323
Brisk Island	207	Bushy Islet {Port Curtis}	62
Britomart Reef	210	Bushy Islet {Redbill Isle}	135
Broad Mount	71	Bustard Bay	55
Broad Sound	103	Bustard Head	55
Broad Sound Channel	104		
Broadhurst Reef	209	Cabbage Tree Creek	136
Broadmount	76	Cairncross Islets	324
Brook Islands	215	Cairns	238
Brooks Shoal	105	Cairns Harbour	235
Broome Head	94	Cairns, Port of	234
Broomfield Reef	49	Cairns Reef	260
Broomfield Rock	276	Calder Island	151
Brother, Mid	333	Calf Islet	162
Brother, North	333	Calliope Channel	208
Brother, South	333	Calliope Island	208
Brothers, The		Calliope Point	207
{Adolphus Channel}	333	Calliope River	68
Brothers, The		Cambridge Point	335
{Hillsborough Channel}	148	Cameron Shoal	287
Brown Peak	269	Camp Islet	188
Brown Range	224	Camp Point	228
Brown Rock	88	Campbell Point	289
Brown Shoal	228	Cannibal Group	92
Brush Islet	160	Canoe Pass	93
Bryant Rock	95	Canoe Point	60
Buchan, Mount	241	Cape Islet	89
Buchan Point	241	Cape Rock {Cape Conway}	149
Buchan Rock	318	Cape Rock {Cape Melville}	274
Bullion Rocks	154	Capricorn, Cape	70
Bullock Point	86	Capricorn Channel	46
Bundaberg	53	Capricorn Group	44, 45
Bunker Group	43	Cardigan Point	78
Burbank Creek	118	Cardwell	221
Burdekin River	189	Carlisle Island	152
Burdekin Rock	204	Caroline Rock	307
Burke Reef	306		

	頁		頁
Carpentaria, Gulf of	333	Cid Island	170
Castle Hill	196	Clack Islet	283
Castle Hill, Barra	214	Clack Reef	283
Castle Peaks	280	Clairview Bluff	112
Casuarina Hill	256	Clairview Creek	112
Casuarina Island	78	Clara Group	87
Casuarina Point	234	Clara Islet	94
Cateran Bay	175	Claremont Isles	291
Cattle Point	73	Claremont Point	284, 285
Causeway, The	165	Claremont Rock	295
Cawarra Head	159	Clark Point	50
Cawarral Creek	73	Clark Shoal {Abbot Bay}	189
Cee Reef	252	Clark Shoal	
Celebration Reef	303	{Princess Charlotte Bay}	287
Central Island Crossing	77	Clay Isle, Red	108
Centre Bank	73	Clerke Island	315
Chaine, Mount	165	Cleveland Bay	196
Challenger Bay	207	Cleveland, Cape	194
Channel Islet	106	Cliff Head	106
Channel Rock {Cape Melville}	274	Cliff Islands	285
Channel Rock {Cape Sandwich}	215	Cliff Islets, Red	147
Chapman Islet	303	Cliff Point {Cape Manifold}	84
Chapman Reef	303	Cliff Point, Red	241
Charles Hardy Islands, Sir	317	Cliff Point, White	241
Charles Rock	132	Cliffy Point {Newcastle Bay}	325
Charlotte Bay, Princess	279, 284	Clinton, Cape	84
Charlotte Point	331	Clinton Peninsula, Cape	84
Charon Point	113	Clinton, Port	84
Chase Point	119	Clump Hill	120
Chersonese Point	79	Clump Mount	224
Chester Peak	296	Clump Point	224
Chester Range	296	Coal Bay	329
Chester River	289	Coal Islet	110
Cheviot Island	97	Coaster Channel	134
Chevy Shoal	120	Coates Reef	212
Chief Rocks, Sable	69	Cockatoo Point	173
Chilcott Rock {Voaden Point}	300	Cockburn Islets	318
Chilcott Rocks {Palm Isles}	207	Cockburn Patch	318
Child, The	75	Cockburn Reef	318
Chimmo Shoal	319	Cockermouth Island	152, 157
Chisholm Point	304	Cockscomb Hill	72
Cholmondley Islet	323	Cocoanut Point	229
Christo Creek, Monte	58	Cod Shoal, Rock	45
Chrome Rock	160	Coffin Islet	153
Chyebassa Shoal	182	Cole Islands	270
Cid Harbour	170	Cole Islet	159

	頁		頁
Coliseum Inlet	58	Cowlishaw Reef	252
Collins Hill	290	Craig Point	174
Collins Island	92	Creek Rock	86
Collinsville	203	Crescent Reef	275
Colmer Point	289	Cridland Hill	320
Combe Creek	193	Croaker Rock	147
Combe Islet {Family Islands} ...	275	Crocodile Banks	112
Combe Islet {Howick Group} ...	223	Crocodile Creek	196
Combe Point	279	Crooked Sands	101
Comet Ledge	110	Cruiser Pass	260, 261
Comet Rock	110	Cullen Islet	134
Compigne Island	64	Cullen Reef	134
Conder Shoal	170	Cumberland Channel	156
Cone Island, Double	177	Cumberland Islands	150
Cone Peak {Altanmoui Range} ...	269	Curacoa Channel	208
Cone Peak {Macrossan Range} ...	291	Curacoa Island	208
Conical Hill	320	Curd Reef	307
Conical Rock {Cape Bedford} ...	257	Curlew Island	128
Conical Rocks {Keppel Isles} ...	83	Curlew Spit	78
Connor Banks	111	Curtis Channel	42
Connor Bluff	58	Curtis Island	69
Connor Islet	126	Curtis, Port	58, 68
Connor Rock	95		
Constantine Point	231	Dagmar Range	243
Conway, Cape	149	Daintree River	245
Conway Shoal	149	Dalrymple Bay	137
Cook, Mount	252	Dalrymple Point	182
Cooks Passage	266	Dalwood Point	159
Cooktown	255	Dam Creek, Rocky	118
Cooktown Harbour	253	Danger Islet	100
Cooktown, Port of	253	Danger Shoal	100
Cooper Creek	247	Dangerous Reef	139
Cooper Point	231	Daniel Point	170
Coppersmith Rock	155	Daniell Reef	341
Coquet Island	271	Datum Point	64
Coquet Islet	102	Davidson Bay	129
Coquette Point	230	Davies Reef	209
Coral Point	136	Davy Patches	276
Corbett Reef	287	Dawson Reef	252
Cordelia Hill	213	Dayman Point	243
Cordelia Rocks	205	Dayman Rock	293
Cormorant Pass	266	Dead Dog Island	158
Corroboree Island	136	Decapolis Reef	265
Cottier Bank	72	Deception Inlet	118
Cow Islet	162	Deception Point	233
Cowie Point	248		

	頁		頁
Dee Reef	252	Double Point {Shelburne Bay} ...	320
Deedes Point	165	Double Rock {Cape Manifold} ...	84
Defiance Islet	149	Double Rock {Cape Weymouth} ...	305
Defiance Reefs	149	Double Rock {Hook Island}	172
Delcomyn Islet	87	Double Rocks {Broad Sound} ...	104
Delius Patch	250	Double Sloping Hill	54
Deloraine Islet	175	Doubleyew Ree, South	276
Deluge Inlet	218	Douglas	244
Denham Island	281	Douglas Islet {Cairncross Islet} ...	324
Denison, Port	103	Douglas Islet	
Denman Island	164	{Guardfish Cluster}	127
Dent Island	168	Douglas, Port	243
Dent Passage	138	Douglas Shoal	47
Derwent Island	150	Doughty Creek	183
Devereux Rock	153	Dove Point	93
Diamantina Island	64	Downward Patches	139
Diamantina, Mount	213	Drake Shoals	295
Dickey Point	335	Draper Patch	252
Dickson Inlet	244	Drew Shoal	54
Dido Rock	208	Drumfish Shoal	108
Digby Island	129	Dryander Hills	176
Dinner Creek	289	Dryander, Mount	162, 176
Dinner Islet	127	Duck Creek	181
Direction, Cape	296, 298	Duck Island, Wild	106
Direction Hill	298	Duddon Point	151
Direction Island, North	263	Dudgeon Point	138
Direction Island, South	263	Dugdale Rock	303
Divided Island	74	Dugong Inlet	170
Division Point	76	Dugong Island	334
Dog Island, Dead	158	Duke Islands	99
Dolphin Reef	307	Dumbell Islet	175
Dome Islet	87	Dungeness	217
Don River	188	Dunk Island	223
Donovan, Mount	247		
Donovan Point	248	E Reef	252
Donovan Shoal	92	Ead Reef	287
Dorsal Rock	155	Eagle Islet {Duke Islands}	100
Double Cone Island	177	Eagle Islet {Lizard Island}	265
Double Hill	224	Earl Bank	93
Double Island {Beverley Group} ...	131	Earl Hill	235
Double Island {Buchan Point} ...	241	East Bank {Keppel Bay}	73
Double Mount, High	92	East Banks {Port Curtis}	59, 61
Double Mountain		East Bay, North	207
(Jukes, Mount)	145	East Cape, South	206
Double Point {Keppel Bay}	68	East Creek	94, 97
Double Point {Mourilyan}	225		

	頁		頁
East Islets	323	Elliot Islet, Lady	42
East Point {Facing Island}	61	Elliot River	188
East Point {Pioneer River}	139	Ellis Islet	295
East Point Ledge	69	Ellis Reef	295
East Repulse Island	149	Ellison Reef	211
East Ridge Banks	94	Em Reef	265
East Rock	163	Embley Range	290
East Spur	121	Emily Patches	125
Eborac Island	332, 333	Emma Reef	293
Eborac Island	332	Emu Park	73
Eclipse Island	207	Emu Point	73
Eddy Reef	211	End Reef	293
Eden Reef	287	End Reef, North	138
Edgecumbe Bay	181	Endeavour Reef	260
Edgecumbe, Cape	182	Endeavour River	253
Edgecumbe Heights	182, 188	Endeavour Strait	336
Edgell Bank	48	Entrance Island	85
Edgell Rock	153	Entrance Ledge	60
Edward Island	175	Erlangen Patch	318
Edward Islet	95	Erskine Islet	44
Edwards Shoal		Es Reef	297
{Northumberland Isles}	126	Escape Cay	109
Edwards Shoals {Lloyd Bay}	306	Escape River	323, 325
Edwin Rock	178	Eshelby Island	178
Eel Reef	310	Esk Island	208
Ef Reef	262	Esk Islet	175
Eff Reef	284	Esk River	252
Eft Reef	311	Ess Reef	276
Egg Island	77	Etatapuma Point	320
Egg Rock	75	Ethel Rocks	56
Egmont Reef	242	Ethel Sand	125
Egremont Pass	151	Eupatoria Point	79
Egret Reef	252	Euri Creek	188
Eh Reef	250	Eurimbula Creek	55
Elamang Island	132	Eva Islet	215
Eleanor Creek	204	Evans Bay	329
Electra Head	207	Evans Point	329
Elf Reef	293	Evans Rock	305
Elford Reef	212	Evanson Point	285
Eliot, Mount	194	Eve Peak	296
Eliot Range	194	Evening Reef	260
Eliot, Sharp	194	Exit Reef	305
Eliza Islet	92	Eye Reef	263
Elk Cliff	207		
Ell Reef	265	Facing Island	59, 68
Ellie Point	238		

	頁		頁
Fahey Reef	287	Fisherman Point	218
Fair Cape	310	{Hinchinbrook Island}	218
Fairfax Islet	43	Fisherman's Point	
Fairfax Rock	128	{Pioneer River}	139
Fairlight Rock	158	Fison Reefs	311
Fairway Reef	319	Fitzalan Islet	169
Fairway Rock	72	Fitzroy Island	233
Fairymead	51	Fitzroy Reef	44
Falcon Island	208	Fitzroy River	71, 76
Falcon Islet	106	Flagstaff Hill	200
Fales Islet	272	Flat Island Pass	109, 114, 116
Falora Reef	212	Flat Isles	92, 114, 108
False Cape	237	Flat Islet	77, 84
False Orfordness	320	Flat Top Island	130, 138
Family Islands	222	Flattery, Cape	257
Fanning Shoal	108	Flinders, Cape	280
Fanshawe, Mount	249	Flinders Group	280
Fantome Island	208	Flinders Island	280
Fantome Rocks	153	Flinders, Mount	85
Farmer Islet	313	Flinders Passage	
Farquharson Reef	211	{Great Barrier Reefs}	181
Farrier Island	154	Flinders Passage	
Fathom Bank, Six	173	{Torres Strait}	331
Fathom Patch, Three	163	Flinders Peak	280
Fathom Patches, Four	326	Flinders Rock	280
Fawn Head	206	Flirt Point	231
Feather Reef	211	Flock Pigeon Islet	110
Feltham Cone	194	Flora Passage	212
Ferdinand Shoal	130	Flora Point	57
Festing Shoal	132	Flora Reef	212
Fife Island	292	Fly Channel	281
Filmoy Shoal	151	Fly Islet	206
Finger and Thumb Rocks	153	Fly Point {Albany Pass}	325, 328
Finlay, Mount	249	Fly Point {Goold Island}	216
Fire Point	166	Fly Reef	275
First Lump	75	Flying Fish Point	229
First Red Rocky Point	298	Foot Island, One	173
First Stony Point	311	Forbes Head	334
Firth Patch	166	Forbes Islets	311
Fish Bay, Gar	129	Forge Rocks	155
Fish Reef	147	Formartine, Mount	241
Fish Rock	86	Forrester Reef	262
Fish Point	305	Forsberg Point	249
Fish Point, Flying	229	Forwood Reef	319
Fisher Islet	313	Four Fathom Patches	326
Fisheries	65	Four-foot Rock	195

	頁		頁
Frankland Islands	231	Gloucester Head	176
Frederick Patches	303	Gloucester Island	176
Frederick Point		Gloucester Passage	177
{Albany Island}	329	Goat Island	165
Frederick Point		Goldsmith Island	154
{Flinders Island}	282	Goodman Rock	227
French Shoal	175	Goodwin Shoal	47
Frenchman Reef	291	Goold Island	216
Freshwater Point	118	Gordon Head	114
Friendly Point	297	Gordon, Mount	183
Frith Rock	174	Gore Island	315
Fuller Point	170	Goudge Bank	211
Funnel, Mount	117	Gould Island	148
		Graf Rock	123
Gallon Reef	311	Grafton, Cape	233
Gannet Rock	110	Grafton Passage	212, 258
Gar Fish Bay	129	Graham Creek	68
Garden Island	216	Grange Rock	232
Garioch, Mount	242	Grants Bank	166
Garioch Reef	242	Grassy Hill {Cooktown}	252
Gatcombe Head	61	Grassy Hill {Keppel Bay}	71
Gavial Creek	77	Grassy Island	177
Gee Reef	262	Grave Point	251
Genesta Bay	162	Great Barrier Reefs	41
George Island	125	Great Keppel Island	74
George Point		Great Palm Island	206
{Cape Gloucester}	176	Great Sandy Island	42
George Point		Green Hill	117
{Hinchinbrook Island}	214	Green Island	234
Georgie Hill	226	Green Islet	145
Geranium Passage	211	Green Point	166
Geranium Shoal	155	Gregory River	181
Gertrude Reef	301	Grenville, Cape	314
Gibson Reef	211	Grey Peaks	233
Gill Patches	261	Gridland Hill	320
Gilling Point	171	Griffith, Cape	304
Gilmore Bank	324	Grimston Point	176
Gin Creek, Yellow	189	Groper Point	172
Gladstone	59, 67	Groyne	50
Gladys Inlet	229	Grub Reef	287
Glasgow Rock	102	Guardfish Cluster	127
Glendower Point	118	Gubbins Reef	250
Glennie Inlet	311	Gull Cay	109
Glennie Reef	302	Gull Reef	262
Gloucester, Cape	176	Gumbrell Island	178
		Gunga Shoal	268

	頁		頁
Guthray Reef	319	Hay Island	292
Guthrie Shoal	47	Hay Point	136
		Hay Reef	137
Habana Creek	145	Haycock Island	218
Haberfield Shoal	47	Haycock Islet	241
Haggerstone Island	314	Hayes Hill	298
Hales Islet	272	Hayes River	298
Half-tide Rock	103	Hayman Channel	173
Halfway Island	74	Hayman Island	172
Halfway Islet	322	Hayman Point	216
Halifax	220	Hayman Rock	207
Halifax Bay	204	Haynes Spit	80
Halifax, Mount	204	Hayter	225
Hall Point	225	Hayter Point	225
Hall Rock	227	Hazard Bay	209
Hall-Thompson Reef	211	Hazel Reef	313
Halloran Rock	304	Hazelgrove Reefs	306
Halycon, Mount	247	Head Creek	96
Hambleton	235	Head Island, Pier	94
Hamilton Island	168	Head Island, Turtle	325
Hammer Island	156	Head Islet, Mast	44
Hammond Reef	299	Heath Creek	189
Hampton Island	270	Heath Point	230
Hangklip Peak	296	Heath Reef	295
Hannah Island	292	Heath Shoals	125
Hannah Point	165	Hecate Point	214
Hannah Rock {Keppel Isles}	75	Hector Hill	137
Hannah Rock {Percy Isles}	119	Hedge Reef	287
Hannibal Islands	321	Heights of Victory	243
Hardy Islands, Sir Charles	317	Helby Hill	320
Hardy Reef	180	Helby Rock	293
Harold Islet	175	Heldson Reef (Aitch Reef)	262
Harrier Point	209	Helvellyn Rocks	153
Harriet Island	49	Heming Point	282
Harrington Reef	326	Heming Range	296
Harris, Mount	241	Hemmant, Mount	247
Harrison Islet	92	Hempel Rock	153
Harry Shoals	128	Henani Rock	128
Harvey Island	315	Henderson Island	130
Harvey's Creek	21	Henning Island	169
Haslewood Island	174	Herald Island	205
Haswell Patch	166	Herald No. 1	48
Haughton River	194	Herald Patches	43
Havannah Island	205	Herald's Prong No. 2	48
Hawkings Point	198	Herald's Prong No. 3	48
		Herald's Reef Prong	48

	頁		頁
Herbert Bay	328	Hook Reef	179
Herbert Creek	113	Hope Islands	249
Herbert River	221	Horn, The	165
Heron Islet	44	Horse-shoe Bay	198
Hervey Bay	49	Hoskyn Islet	43
Hervey Islands	87	Hotspur Islets	123
Hesket Rock	151	Houghton Island	271
Hexham Island	99	Howard	48
Hicks Island	315	Howard Bluff	281
High Double Mount	92	Howard Islet	120
High Island	232	Howard Patch	48
High Islets	147	Howard Point	120
High Mount	161	Howard Range	296
High Peak	297	Howard Rock	300
High Peak Island	98	Howick Group	271
High Range {Clump Point}	224	Howick Island	271
High Range {Cape Sidmouth}	296	Howie Reef	211
High Rock	263	Hudson Islet	223
High Water Islet	136	Hugli River	112
Highgate Hill	314	Hughes Point	170
Hilda Hill	226	Hull Island	130
Hildebrand Rock	122	Hull River	222
Hill Creek, Round	54	Hummock Hill	58
Hill Head, Round	54	Hummock Mount	91
Hill Point, Sea	71	Hummocks, The	269
Hill Rock	170	Hummocky Island	72
Hillock Point	214	Humpy Island	74
Hillsborough, Cape	146	Humpy Point	166
Hillsborough Channel	156	Hunt Channel	171
Hinchinbrook Channel	214	Hunt Shoal	146
Hinchinbrook Island	213	Hunter Inlet	311
Hinchinbrook, Port of	216	Hunter Island	101
Hirst Islet	128	Hunter Point	321
Hixson Cay	48	Hunter Reefs	321
Hixson Islet	119	Hutchison Island	225
Hixson Point	120	Hyde Rock	152
Hobbs Hill	290		
Holbourne Island	179	Ian Point	173
Holdsworth Rock	291	Ida Island	329
Hole Bay, Water	315	Ida Point	329
Holt Islet	92	Inch Rock	247
Holt Shoal	107	Indian Head	255
Home Islands	315	Infelix Islets	106
Hooghly, The	112	Ingot Islands	153
Hook Island	171	Ingram Island	275
Hook Paek	172		

	頁		頁
Inkerman, Mount	189	June Reef	285
Innamincka Shoal	47	Juno Bay	209
Inner Head	86		
Inner Rock	55	Kangaroo, Mount	162
Innes Head	57	Kangaroo Shoals	310
Innes Island	125	Karamea Bank	48
Innisfail	230	Katoomba Bank	171
Innisfail, Port of	229	Kay Islet	313
Inset Reef	313	Kay Reef	313
Io Reef	154	Kazatch Point	79
Ireby Islet	175	Keast Shoal	287
Iris Point	209	Keatinge Islet	334
Iris Reef (Aye Reef)	288	Kedge Reef	263
Iron Islet	100	Keelan Island	130
Irving Islet	134	Keeper Reef	209
Irving Reef	45	Kei Reef	288
Island Bluff	111	Kelso Reef	210
Island Head	88	Kemp Rocks	310
Island Head Creek	88	Kennard Rocks	155
Island Point	243	Kennedy Bay	222
		Kennedy Hill	310
		Kennedy River	
Jack Rock	130	{Newcastle Bay}	285
Jackson Patches	211	Kennedy River	
Jackson Rock	305	{Princess Charlotte Bay}	325
James Smith Group, Sir	154	Kennedy Shoal	210
Jane Table Hill	284	Kennedy Sound	159, 160
Jansen Rock	56	Kent Island	225
Jardine Islet	323	Keppel Bay	70
Jardine Rock	334	Keppel, Cape	71
Jeanette Hill	285	Keppel Island, Great	74
Jee Reef	287	Keppel Island, North	83
Jeffreys, Mount	165	Keppel Isles	70, 74
Jeffreys Rocks	101	Keppel Rocks	72
Jenny Lind Bank	57, 60	Ker Point	167
Jenny Lind Creek	56	Ker Mountains, Bellenden	231
Jessie Island	225	Keswick Island	151
Jesuit Point	159	Kestrel Reef	288
Jih Reef	311	Kew Islets	268
John Brewer Reef	210	Keyser Island	158
Johnson Patch	47	Khandalla Shoal, North	295
Johnstone River	229, 239	Khandalla Shoal, South	295
Jones Patch	232	Kilgour Shoal	127
Jones Point	170	Kimberley, Cape	245
Juan Rock	150	King Island	283
Jukes, Mount	145		

	頁		頁
King Reef	224	Lingham Islet	92
Kirkviller Hills	215, 219	Linné Island	154
Kissing Point	197	Linné Peak	154
Kiu Reef	295	Linnet Reef (Ell Reef)	265
Kloster Point	328	Lion Point	171
Knight Island	132	Lion Reef	312
Kolan River	53	Litabella Creek	54
Korea Reef	242	Little Adolphus Island	336
		Little Boydong Island	322
Lacey Island	335	Little Islet	108
Lacy Ceek	148	Little Lindeman Island	159
Lady Elliot Islet	42	Liverpool Creek	224, 225
Lady Elliot Reef	204	Lizard Island	265, 266
Lady Islet	170	Llewellyn Reef	44
Lady Musgrave Islet	43	Llewellyn Shoal	146
Ladysmith Island	156	Lloyd Bay	304
Lake Reef	248	Lloyd Islands	306
Lake Shoals	103	Lloyd Shoal	131
Lamond Hill	165	Lockhart River	304
Lamont Reef	44	Locksmith Island	155
Langford Islet	173	Lodestone Reef	210
Lansdown Reef	299	Lola Montes Pass	101
Lansdown Spit	299	Lomond, Ben	181
Larangalia	320	Long Bank	111
Larcom, Mount	59	Long Island {Broad Sound}	104
Lark Pass	261	Long Island	
Lark Reef	261	{Whitsunday Passage}	163
Launch Rocks	85	Long Island Sound	161, 163
Laura	255	Long Mountain	117
Laurel Reef	314	Long Reef	262
Leafe Peak	220	Long Rock	158
Ledge Point	77	Long Shoal {Duke Islands}	101
Leeper, Mount	226	Long Shoal	
Leeper Reef	136	{Whitsunday Passage}	162
Leeper Shoal	175	Longreach	78
Leggatt Island	270	Lookout Point	264
Leicester Island	93	Loriard Point	170
Lind Bank, Jenny	57, 60	Lorne Reef	205
Lind Creek, Jenny	56	Louisa Creek	137
Lindeman Island	163	Low Isles	245
Lindeman Island, Little	159	Low Islet {Duke Islands}	101
Lindeman Peak	161	Low Islet {Lloyd Bay}	306
Lindquist Island	225	Low Rock {Molle Channel}	165
Line Reef	180	Low Rock	
Lingham Island	92	{Northumberland Isles}	98
		Low Rock {Newry Port}	147

	頁		頁
Low Wooded Isle	257	Mangrove Islands	
Lower Rock	125	{Broad Sound}	111
Lowrie Islet	300	Mangrove Point	220
Luce, Mount	188	Manifold, Cape	83
Lucinda	216	Manley Islet	318
Lucinda Point	204, 216	Manning Reef	62
Lucy Ravel Point	104	Many Peak Range	196
Lump, First	75	Maona Inlet	172
Lump, Second	74	Mar, Mount	241
Lupton Islet	174	Marble Island	100
Lyons Point	328	Margaret Bay	319
Lytton Reef	293	Marian Creek	117
		Marian Rock	118
Mabel Island	232	Marked Hill	187
Macalister Range	242	Marlow, Mount	196
Macarthur Islands	321	Marquis Island	93
Macdonald Point	95	Marret River	285
Macdonald Reef (Pea Reef)	294	Mars Shoal	160
McEwen Islet	110	Marsh Reef	127
McIvor River	256	Martin Reef (Em Reef)	265
Mackay	140	Maryport Bay	153
Mackay, Port of	137	Maryport Islet	153
Mackay Reef {Undine Reef}	259	Mason Reef	314
Mackay Reef {Forrester Reef}	262	Massey Creek	289
Mackenzie, Mount	186	Mast Head Islet	44
Mackenzie Sand	78	Master Rocks	95
Maclear Island	281	Matthew, Mount	196
Macmillan River	319	Mausoleum Island	147
Macnamara Patch	303	May Peak	233
Macrossan Range	290	May Reef	306
Magazine Island	202	May Rock	299
Magnetic Island	198	Meaburn Rock	228
Magnetic Passage	210	Megaera Rock	275
Magpie Reef	293	Melanie Rock	277
Magra Islet	319	Melville, Cape	273
Maher Island	159	Melville Range	278
Mahmie Peak	254	Mendel Creek	218
Mai Islet	331	Merkara, Mount	164
Main Channel	114, 116	Messum Hill	320
Malbon Thompson Range	231	Meston Range	296
Malcolm Patch	260	Mew River	329
Man and Wife Rocks	83	Miall Island	75
Man Rock, Old	305	Miall Islands	75
Mangrove Island		Mid Brother	333
{Hinchinbrook Channel}	219	Mid Molle Island	275
		Mid Reef	275

	頁		頁
Mid Rock	335	Morilug Islet	334
Middle Bank	64	Morinda Shoal	209
Middle Channel	76	Morning Cay	108
Middle Head	57	Morning Reef	260
Middle Hill	183	Morpeth Islet	98
Middle Island	178	Morris Island {Claremont Isles}	294
Middle Island {Edgecumbe Bay}	178	Morris Island {Cole Islands}	270
Middle Island {Miall Islands}	75	Morris Rock	302
Middle Island {Percy Isles}	120	Mosquito Point	311
Middle Passage	104	Mossman	244
Middle Peak [Larangalia]	320	Mossman River	243
Middle Reef {Paluma Passage}	316	Mosstrooper Peak	175
Middle Reef {West Channel}	199	Mound Islet	223
Middle Reef {Weymouth Bay}	310	Mount Adolphus Island	334, 335
Middle Rock {Bedwell Group}	126	Mount Adolphus Islands	334
Middle Rocks {Bustard Head}	55	Mourilyan	228
Middle Sand	78	Mourilyan Harbour	226
Middle Shoal	109	Mourilyan, Port of	226
Midge Hill	148	Mowbray River	242
Midge Island	148	Mud Creek	190
Midge Point	148	Mud Islet	68
Mile Creek, Seven	75	Muddy Bay	329
Miles Reef (Ar Reef)	270	Mulgrave River	231
Millaquin	51	Mulligan, Mount	238
Miller Hill	230	Mumford Islet	92
Milman Islet	324	Mundurán Creek	58
Milman, Mount	255	Munro Reef (Tea Reef)	276
Minster Island	130	Muntalunga Range	196
Minstrel Rocks	175	Murdering Point	224
Miranda Point	206	Murdock Island	269
Mission Bay	234	Murdock Point	269
Missionary Bay	215	Murray Reefs	257
Molle Channel	165	Murray River	222
Molle Island	164	Musgrave Islet, Lady	43
Molle Island, Mid	275		
Molle Island, North	165	Nara Inlet	172
Molle Island, West	166	Nares Hill	273
Molle, Port	166	Nares Point	282
Monkhouse Point	252	Nares Rock	154
Monte Christo Creek	58	Narrows, The	
Montes Pass, Lola	101	{Long Island Sound}	163
Moody Reef	314	Narrows, The	
Moore Reef	212	{Port Curtis}	68
Moresby Bank	48	Narrows, The	
Moresby River	226	{Stonehaven Anchorage}	173
Morey Reef	244		

	頁		頁
Neck Bay	161	North Head {Port Denison}	183
Nesbit River	290	North Island	216
Net Reef	180	North Keppel Island	83
Neville, Mount	247	North Khandalla Shoal	295
New Reef	302	North Ledge	333
New River	329	North Molle Island	165
Newcastle Bay	325	North Palm Island	209
Newry Island	147	North Passage	76
Newry Island, Outer	147	North Patch	108
Newry, Port	147	North Point	
Newton Island	271	{Facing Island}	58, 63, 69
Nicklin Islet	334	North Point {Long Island}	105
Nigger Head	334	North Point Cays	107
Niggerhead	207	North Point Islands	106
Night Island	301	North Point Passage	116, 114
Nina Peak	213	North Red Bluff	112
Ninian Bay	272	North Reef	46
Nob Island	315	North Repulse Island	149
Nob Point	255	North Rock {Cannibal Group}	92
Nob, Waverley	112	North Rock {Cape Edgecumbe}	182
Nobby Head	198	North Sand Hill	264
Noble Island	270	North Warden Reef	276
Noddy Reef (End Reef)	293	North West Islet	45
Noel Island	130	North-east Bluff	334
Nomad Reef	314	North-east Island	123
Norman Rock	300	North-east Point	87
Normanby Island	232	North-west Bay	120
Normanby River	285	North-west Channel	96
Normanby Rock	121	Northumberland Isles	97
North Arm	170	Norton Point	58
North Bank	64	Notch Hill	164
North Barnard Islands	225	Notch Mountain	99
North Bay Point	272	Notch Peak	196
North Brother	333	Notch Point	117
North Channel		Nymph Island	267
{Cockburn Reef}	318		
North Channel {Howick Group}	275	O'Connell	65
North Channel {Port Curtis}	62	O'Shanter Point, Tam	222
North Channel		Obree Point	249
{Shoal Water Bay}	96	Obree Reef	291
North Direction Island	263	Observation Point	62
North Doubleyew Reef	276	Obstruction Shoals	105
North East Bay	207	Oh Reef	294
North End Reef	138	Ogilvie Reef (Oh Reef)	294
North Entrance	59	Old Man Rock	305
North Head {Burnett River}	49		

	頁		頁
Olden Island	178	Paget Point	329
Olive Patch	286	Pallarenda, Cape	196
Olive River	312	Pallion Point	175
Olver Rock	293	Palm Island, Great	206
One Fathom Patch	111	Palm Island, North	209
One Foot Islet	173	Palm Isles	206
One Tree Hill	59	Palm Passage	210
One Tree Islet	44	Palm Rack	207
One-and-a-half-mile Opening	266	Palmer Point	231
Onslow Point	119	Palmerston, Cape	118
Oom Shoal	146	Paluma Passage	315
Orchard Rocks	198	Paluma Range	204, 196
Orchid Hill	304	Paluma Rock	207
Orchid Point	304	Paluma Shoal	
Orford Bay	323	{Sir Charles Hardy Islands}	318
Orfordness	323	Paluma Shoals {Halifax Bay}	204
Orfordness, False	320	Pan Hill, Pudding	323
Orion Shoal	160	Pancake Creek	56
Orpheus Island	209	Pancake Point	56
Orpheus Point	328	Pandora Reef	206
Orton Island	315	Papuan Pass	260
Osborn Islet	95	Park Creek, Water	83
Osborne Reef (Vee Reef)	302	Park Shoal	106
Osnaburg Point	328	Park Point	83
Osprey Rocks	100	Parker Reef	135
Osterland Reef	261	Parry Rock	300
Oswald Shoal	274	Parsons Point	63
Oswestry Rock	79	Part Reef	211
Ottaway Patch	250	Pasco Reef	262
Otter Reef	210	Pascoe River	309
Otterbourne Island	99	Passage Patch	93
Outer Newry Island	147	Passage Peak	168
Outer Reef	316	Passage Reef	316
Outer Rock {Bustard Head}	55	Paxton Shoal	126
Outer Rock {Keppel Isles}	83	Payne Shoal	99
Outer Rock {Russell Island}	232	Pea Reef	294
Overfall Rock	134	Peak Head	128
Overfall Rock, South	134	Peak Hill	59
Overseas	235	Peak Island	74
Owen Channel	282	Peak Island, High	98
Owen, Mount (Mount Neville)	247	Peak Island, Pine	123
Owens Shoal	122	Peak Island, Snare	150
Oyster Reef	259	Peak Island, Tinonee	127
Oyster Rock {Herbert River}	221	Peak Range, Many	196
Oyster Rock {Port Curtis}	62		
Oyster Rock {Port of Mackay}	138		

	頁		頁
Peaked Islet	84	Pigeon Island	309
Pear Shoals	171	Pigeon Islet, Flock	110
Pearl Bay	87	Pilot Reef	110
Pearl Pass	105	Pin Rock, Ten	92
Pearl Rock	129	Pincer Islet	155
Pearl Shoal	129	Pine Head	163
Pearn Rock	322	Pine Island	163
Peart Reef	211	Pine Islet {Keyser Island}	158
Pedalion Point	223	Pine Islet {Whitsunday Island}	174
Pelican Island		Pine Islets {Percy Isles}	121
{Claremont Isles}	288	Pine Mountain	91
Pelican Island {Keppel Bay}	74	Pine Peak	123
Pelican Rock {Keppel Bay}	74	Pine Peak Island	123
Pelican Rock		Pinetrees Point	88
{Shoal Water Bay}	95	Pinnacle Peak {Hook Island}	172
Pelorus Island	209	Pinnacle Peak	
Penguin Channel	246	{Mount Adolphus Island}	334
Peninsula Flats	94	Pinnacle Rock	146
Peninsula Range	93	Pioneer Bay {Albany Island}	331
Penn Islet	130	Pioneer Bay {Palm Isles}	209
Penow Islet	130	Pioneer Bay	
Penrith Island	150	{Whitsunday Passage}	176
Pentecost Island	160	Pioneer Point	164
Percy Group	123	Pioneer River	143
Percy Isles	119	Pioneer Rocks	164
Perforated Point	85	Piper Islands	312
Perpetua Point	136	Pipon Islets	273
Perry Island	315	Pipon Shoals	274
Perry Rock	227	Pirie Head	280
Perseverance Island	169	Pitt, Mount	214
Peter Head	175	Pitt Rock	331
Peteril Islet	175	Pixie Reef	259
Pethebridge Islets (Kew Islets)	268	Plane Creek	136
Petty Patch	256	Plant Peak	290
Phillip, Mount	113	Plantation Creek	190
Phillips Reef {Acheron Island}	205	Planter Shoal	128
Phillips Reef		Planton Island	165
{Cape Palmerston}	134	Platypus Channel	200
Pickard Reef	312	Platypus Rock	160
Pickersgill Reef	260	Pleasant Island	83
Picnic Bay	198	Point Cays, North	107
Picnic Island	64	Point Islands, North	106
Pier Head	94, 104	Point Islet, Rocky	272
Pier Head Island	94	Point Passage, North	114
Pieter Botte	247	Pollard Channel	318
Pig Islet	318	Polmaise Reef	45

	頁		頁
Poole Island	181	Red Bluff, North	112
Portland Road	309	Red Bluff, South	112
Port Albany	328	Red Clay Isle	108
Poulsen Rock	294	Red Cliff	60
Poynter Island	125	Red Cliff Islets	147
Pratt Rock	258	Red Cliff Pass	108
Prince of Wales Channel	331	Red Cliff Point	241
Prince Reef	135	Red Cliffs	320
Princess Charlotte Bay	279, 284	Red Hill {Cape Bedford}	256
Proserpine River	149	Red Hills {Lloyd Bay}	304
Prudhoe Channel	134	Red Peak	235
Prudhoe Island	133	Red Point {Avoid Isle}	108
Prudhoe Shoal	133	Red Point {Murdock Point}	269
Pudding Pan Hill	323	Red Rocky Point, First	298
Pullen Point	281	Red Rocky Point, Second	298
Puritan Bay	162	Redbill Isle	135
Pyramid Mount	71	Redden Creek	235
		Reef Islet	109
Quail Island	104	Reef Point	
Quake Reef (Kiu Reef)	295	{Strong Tide Passage}	88
Quarry Point	100	Reef Point	
Queensland	6	{Whitsunday Island}	169
Quetta Rock	335	Refuge Bay	151
Queue Reef	318	Reichelmann Rock	138
Quoin Island {Port Curtis}	64	Reid Islet	132
Quoin Island {Eel Reef}	310	Reid Point	324
Quoin Island Entrance	311	Reid Rock	336
Quoin Islet	84	Reis Point	220
		Renou Islet	130
Rabbit Island	147	Repair Island	165
Race Pass	107	Repulse Bay	148
Race Rocks	106	Repulse Island, East	149
Raglan Creek	82	Repulse Island, North	149
Railway Wharf	253	Repulse Island, South	149
Ramsay Bay	215	Repulse Islands	149
Ranken Islet	85	Rescue Bay	121
Rat Tail Sand	110	Rescue Rock	335
Rattlesnake Channel	281	Restoration Island	305
Rattlesnake Island	205	Restoration Rock	307
Rattlesnake Point	249	Rib Reef	210
Rattlesnake Reefs	291	Rich Hill	66
Rattray Island	178	Rich Rock	64
Ravel Point, Lucy	104	Richards, Cape	215
Recife Point	131	Richards Island	223
		Richards Point	
		{Flinders Island}	283

	頁		頁
Richards Point		Round Back Hills	309
{Rodd Peninsula}	56	Round Head	163
Richardson Range	320	Round Hill {Bustard Bay}	55
Ridge Banks, East	94	Round Hill {Lookout Point}	269
Ridge Banks, West	95	Round Hill {Port Curtis}	59
Ridge Islet	126	Round Hill Creek	55
Ripple Islets	92	Round Hill Head	54
Ripple Rock	62	Round Islet {Port Clinton}	85
Roberts Point	289	Round Islet {Russel Island}	232
Robinson Bay	331	Round Mount	295
Robinson, Mount	171	Round Mountain	204
Rock Cod Shoal	45	Round Point {Cape Direction}	298
Rocket Spit	127	Round Point {Shelburne Bay}	320
Rockhampton	76	Round Rock	93
Rockingham Bay	221	Round Rock Ledges	93
Rocky Dam Creek	118	Round Rocks, Two	101
Rocky Hill	174	Round Top Island	138
Rocky Islet {Archer Point}	251	Roundback, Mount	188
Rocky Islet {Cape Weymouth}	309	Rounded Hill	261
Rocky Islet {Villis Point}	299	Roundish Islet	109
Rocky Islets {Bathurst Bay}	279	Royle	112
Rocky Islets {Cape Capricorn}	70	Rudder Reef	258
Rocky Islets {Cape Flattery}	263	Russell Island	231
Rocky Mount	255	Russell River	231
Rocky Point, First Red	298		
Rocky Point Islet	272	Sabina Point	95
Rocky Point, Second Red	298	Sable Chief Rocks	69
Rocky Reach	52	Sachs Spit	253
Rocky River	289	Saddle Hill {Cairns}	235
Rocky Shelf Bay	120	Saddle Hill {Thorpe Point}	320
Rodd Bay	56	Saddle Islet	266
Rodd Harbour	57	Saddleback Island	178
Rodd Peninsula	57	Sail Rock {Duke Islands}	102
Rodney Islet	320	Sail Rock {Garden Island}	216
Roma Point	164	Sail Rock, South	102
Rooper Inlet	164	Sandwich, Cape	215
Rooper, Mount	164	St. Bees Island	151
Rose Bay	197	St. Helen Creek	147
Roskrige Reef	291	St. Helen Rock	158
Ross Creek	197	St. Lawrence	113
Ross Island	197	St. Lawrence Creek	113
Ross Islet	170	St. Patrick Point	253
Ross River	197	St. Paul's Hill	273
Ross Smith Bank	155	Salamander Reef	195
Rosser Reef	260	Salt Water Creek	243
Rothbury Island	97		

	頁		頁
Salter Island	336	Seven Mile Creek	57
Saltwater Creek		Sextant Rock	329
(Mossman River)	243	Seymour Point	328
Sana Rock	332	Seymour Range	230
Sand Bank Bay	105	Seymour River	221
Sand Bay	145	Shadwell Peak	324
Sand Hill, North	264	Shadwell Point	324
Sand Islet {Bowling-green Bay}	193	Shag Rock	126
Sand Islet {Cole Islands}	270	Shallow Bay	329
Sandbank No. 2	277	Sharland Reefs (Es Reef)	297
Sandbank No. 3	277	Sharp Eliot	194
Sandpiper Reef	135	Sharp, Mount	165
Sandringham Bay	137	Sharp Peak	323
Sandwich, Cape	215	Shaw Island	158
Sandy Cape	42	Shaw Peak	158
Sandy Creek	137	Shelburne Bay	320
Sandy Island, Great	42	Shelf Bay, Rocky	120
Sandy Shoals	107	Shell Point	78
Sappho Roads	130	Shelter Spit	56
Sarina Inlet	135	Shepherd Bay	215
Satellite Reef	259	Sheridan Point	328
Saunders Islet	319	Sherrard Islets	303
Saunders, Mount	255	Sherrard Reef	303
Scawfell Island	151	Shields Island	99
Schooner Rock	152	Ship Hill	59, 64
Scott Reef	212	Ship Rock	72
Scraggy Point	219	Shoal Bay	62
Scrubby Creek {Broad Sound}	112	Shoal Point	145
Scrubby Creek		Shoal Water Bay	91
{Port of Mackay}	138	Shoal Water Bay {Stone Island}	182
Scrubby Mountain	66	Shortland Reef	326
Sea Hill Point	71	Shrewsbury Rock	123
Sea Reach {Burnett River}	51	Shute Island	165
Sea Reach {Fitzroy River}	78	Side Islet, West	110
Sea Reef	287	Sidmouth, Cape	290
Seaforth Island	159	Sidney Islet	159
Seal Rocks	60	Silloth Rocks	152
Sealark Patch	173	Silversmith Island	154, 155
Second Lump	74	Sim Reef	265
Second Red Rocky Point	298	Simpson Point	241
Second Stony Point	311	Simpson Rock	293
Second 3-Mile Opening	301	Sinclair Head	182
Sentry Rock	282	Sinclair Island	270
Separation Bank	93	Sinclair Islet	325
Separation Point	50	Singapore Rock	152
Settlement Point	61	Single Rock	84

	頁		頁
Singleton Patch	273	South Channel {Port Curtis}	59
Sir Charles Hardy Islands	317	South Channel	
Sir James Smith Group	154	{Stonehaven Anchorage}	173
Sister Islet	225	South Direction Island	263
Six Fathom Bank	173	South Doubleyew Reef	276
Skiddaw Peak	152	South East Cape	206
Skull Islands	94	South Entrance	184
Skull Knob	147	South Head {Burnett River}	50
Slade Islet	137	South Head {Long Island}	164
Slade Point	139	South Head {Stone Island}	182
Slade Rock	139	South Head Shoal	78
Slashers Reefs, The	210	South Hill	80
Slattery Shoal	128	South Island {Brook Islands}	216
Sleepy Log Rock	204	South Island {Percy Isles}	119
Sloping Hill, Double	54	South Islet	266
Sloping Hummock	51	South Khandalla Shoal	295
Sloping Island	83	South Ledge	333
Smith Bank, Ross	155	South Overfall Rock	134
Smith Bluff {Middle Island}	121	South Patch	108
Smith Bluff {South Island}	119	South Red Bluff	112
Smith Group, Sir James	154	South Reef	315
Smith Islet	223	South Repulse Island	149
Smithfield Creek	235	South Sail Rock	102
Smythe Shoals	125	South Trees Inlet	62
Snake Cays	109	South Trees Point	60
Snake Reef	275	South Warden Reef	276
Snapper Island	246	South West Spit	138
Snare Peak Island	150	South-east Islets	119
Snare Rocks	150	Southport Hill	105
Solder Islet	154	Specie Shoal	154
Solway Pass	174	Spencer Hill	314
Some Rock	315	Sphinx Islet	124
Somerset	328	Spider Creek	112
Somerset Bay	328	Spiers Rock	226
Somerset, Mount	243	Spit End	57
Somerset Point	328	Spitfire Reefs	266
Sorrow Cliff, Mount	247	Spitfire Rock	160
Sorrow, Mount	247	Split Islet	87
South Arm {Cid Harbour}	170	Split Rock	74
South Arm {Port Clinton}	86	Spur Bay	121
South Bank Bay	105	Spur, East	121
South Barnard Islands	225, 226	Spur, West	121
South Barren Islet	105	Square Rocks	83
South Brother	333	Stagg Patches	212
South Cape Bedford	256	Stainer Islet	288
South Channel {Fitzroy River}	76	Stainer Rock	282

	頁		頁
Stanage Bay	94	Sydney, Mount	174
Stanley Island	280	Sykes Reef {Capricorn Group}	44
Stanley, Mount (Peak Hill)	59	Sykes Reef {Night Island}	302
Stanley Point	173	Sykes Rock {Keppel Isles}	75
Stapleton Islet	275		
Startle Reefs	262	Table Hill	213
Station Hill	188	Table Hill, Jane	284
Steamer Passage	207	Table Mountain	247
Steep Island	98	Table Rock	99
Stephens Island	225	Taffy Islet	118
Stewart Peninsula	148	Tail Point	63
Stewart, Port	286	Tail Rock	110
Stewart River	286	Tail Sand, Rat	110
Still Islet	130	Taiwan Shoal	287
Stokes Bay	184	Tam O'Shanter Point	222
Stone Island	181	Tancred Island	165
Stonehaven Anchorage	172	Tannadice Rock	306
Stonor Patch	250	Tannadice Shoal	306
Stony Point, First	311	Taroba Rock	138
Stony Point, Second	311	Taylor Point	235
Stony Shoal	126	Taylor Reef	210
Stork Reef (You Reef)	302	Tea Reef	276
Stover Bay	328	Teague Islet	174
Straloch, Mount	214	Tee Reef	319
Strait Rock	331	Temple Bay	311
Strickland Reef	262	Temple Hill	273
Stripe Point	162	Temple Islets	118
Strong Tide Passage	88	Temple Shoal	118
Stuart, Mount	196	Ten Pin Rock	92
Styx River	113	Tern Cliff	324
Sudbury Reef	212	Tern Isle	135
Sullivan Rock	119	Tern Islet	324
Sullivan Shoal	293	Tetley Islet	333
Sun Islet	94	The Beak	164
Sunday Island	317	The Brather {Port Newry}	148
Sunk Reef	304	The Brather	
Sunset Rock	95	{Adolphus Channel 東側}	333
Sunter Islet	306	The Narrows {Port Curtis}	68
Supply Bay	89	The Narrows	
Surprise Rock	169	{Long Island Sound}	163
Surprise Shoal	211	The Narrows	
Swain Reefs	48	{Stonehaven Anchorage}	173
Swan Islet	95	The Thunb	213
Swan Rock, Black	105	Thettord Reef	212
Swinger Reef	261	Thirsty Sound	105
Switzer Reef (Ess Reef)	276		

	頁		頁
Thomas Island		Torres Strait	331, 337
{Cumberland Islands}	158	Tower Point	123
Thomas Island		Town Reach {Burnett River}	53
{Edgcumbe Bay}	181	Town Reach {Fitzroy River}	78
Thomas, Mount	249	Townshend, Cape	89
Thomas Point	249	Townshend Island	89
Thompson Point	228	Townsvill	203
Thompson Range, Malbon	231	Townsvill Harbour	200
Thompson's Creek	148	Townsvill, Port of	196
Thompson's Point	228	Tozer, Mount	305
Thomson Islet	324	Trammel Bay	162
Thornton Peak	246	Treat Reef (Tih Reef)	297
Thornton Range	246	Treble Island	83
Thorpe Island	222	Treble Islet	123
Thorpe Point	319	Tree Creek, Cabbage	136
Three Fathom Patch	163	Tree Hill, One	59
Three Isles	257	Tree Islet	332
Three Rocks	151	Tree Islet, One	44
Throne Shoals	301	Trees Inlet, South	62
Thrush Reef	322	Trees Point, South	60
Thumb Rocks, Finger and	153	Triangle Island	158
Thumb, The	213	Triangular Islands	94
Tiber Point	58	Tribulation, Cape	247
Tide Island	64	Trinity Inlet	235
Tide Passage, Strong	88	Trinity Opening	259
Tide Point	69	Tryon Islet	46
Tih Reef	287	Tully River	222
Tilbrook Bank	262	Tupper Shoal	131
Till Rock	101	Turn Island	107
Till Shoal	101	Turn Shoal	93
Timandra Bank	73	Turrel Hill	290
Tinonee Bank	128	Turtle Group	267
Tinonee Peak Island	127	Turtle Head Island	325
Tinsmith Island	154	Turtle Island	64
Tobias Spit	232	Turtle Islet	113
Tongue Point	175	Turtle Reef	268
Tongue Reef	259	Tweed Island	97
Tongue Sand	57	Twenty-foot Rock	195
Tongue Spit	57	Twin Peaks	273
Top Island, Flat	130, 138	Twin Reefs	316
Top Island, Round	138	Two Isles	257, 266
Toowong Hill	54	Two Round Rocks	101
Torbanba	53	Tynemouth Island	101
Torch Peak	206	Tyrrel Reefs	312
Torch Shoal	127		
Tornado Rocks	109		

	頁		頁
Ulfa Rock	326	Walter Point	123
Ulrica Point	328	Wapparaburra	74
Underwood Shoal	265, 267	Waratah Island	132
Undine Reef	259	Waratah Shoal	132
Unison Reef (Yew Reef)	276	Warden Reef, North	276
Unity Reef	242	Warden Reef, South	276
Unsafe Pass	165	Wasp Reef	299
Upolu Cay	258	Water Bay, Shoal	91
Upper Head	104	Water Bay, Shoal {Stone Island}	182
Upstart Bay	189	Water Creek, Salt	243
Upstart Cape	188	Water Hole Bay	315
Upstart, Cay	188	Water Islet, High	136
Ussher Point	323	Water Park Creek	83
		Waterwitch Passage	276
		Waterwitch Reef	302
V Reef	322	Watson Island	271
Vallack Point	325	Waverley Creek	113
Vee Reef	302	Waverley Nob	112
Venus Shoal	160	Weary Bay	248
Vernon Rocks	124	Wedge Island	74
Vicary Bay	331	Wedge Islet	145
Victor Hills	136	Wedge Rocks	273
Victor Islet	136	Weigall Reefs	270
Victor Point	136	Wentworth Reef	242
Victoria	202	Wentworth Rocks	185
Victory, Heights of	243	West Banks	61
View Hill	59	West Bay	121
Viking Reef	322	West Bight	95
Villis Point	298	West Channel {Broad Sound}	114
Virago Shoal	199	West Channel {Townsville}	199
Viscount Shoals	133	West Hill	104
Voaden Point	297	West Hill Creek	112
		West Hill Island	107
W Reef	322	West Islet, North	45
Wagtail Sand	78	West Molle Island	166
Waight Bank	305	West Point {Magnetic Island}	198
Wales Channel, Prince of	331	West Point {Port Clinton}	86
Walker Bay	252	West Reef	108
Walker Hill	251	West Ridge Banks	95
Walker Point	251	West Side Islet	110
Wallace Islet {Boydong Cays}	322	West Spit, South	138
Wallace Islet		West Spur	121
{Guardfish Cluster}	129	Westall, Mount	91
Walsh Bay	251	Westminster Abbey	213
Walter Creek	226	Weymouth Bay	309
		Weymouth, Cape	305

	頁		頁
Whale Hill	291	Wolona Point	320
Wharton Reef	286	Woodcutter's Bay	162
Wheatley Shoal	152	Wooded Isle, Low	257
Wheeler Islet	223	Wooden Patch	270
Wheeler Reef	209	Woodstock Hill	220
White Cliff Point	241	Woodwark Bay	176
White Point	320	Woody Hill	220
White Rock {Horse-shoe Bay}	199	Wooroonoran Mountains	231
White Rock {Molle Channel}	165	Workington Islet	174
White Rock {Palm Isles}	207	Wreck Islet	45
White Rocks		Wreck Reef	318
{Shoal Water Bay}	93	Wyborn Reef	326
White Shoal	92	Wye Reef	304
Whitehaven Bay	175		
Whitsunday Cairn	169	Yaralla Shoal	132
Whitsunday Craig	169	Yellow Gin Creek	189
Whitsunday Island	169	Yellow Rock	160
Whitsunday Passage	157	Yeppoon	83
Whitsunday Peak	169	Yew Reef	276
Wife Rocks, Man and	83	York, Cape	332
Wigton Island	152	York Island	333
Wild Duck Island	106	York Road	330
Wild Duck Lagoon	120	You Reef	302
Wilkie Island	292, 294	Young Island	169
Wilkin Hill	220	Young Reef	314
Williams Shoal	126	Yule Point	241
Williamson Reefs	261	Yule Reef	242
Willis Island	附表第 6	Yule Rock	293
Wilson Islet	45		
Wilson Rock	271	Zed Reef	304
Wilson Shoal	180	Zenith Reef (Zed Reef)	304
Winter Shoal	182	Zoe Bay	214
Wistari Reef	44		
Witt Island	64		
Wizard Reef	322		

尋米、米尋、呎米換算表

尋	米	尋	米	米	尋	呎	米	呎	米
1	0.2	40	73.1	1	0.5	1	0.3	61	18.6
1	0.4	41	74.9	2	1.1	2	0.6	62	18.9
1	0.9	42	76.8	3	1.6	3	0.9	63	19.2
1	1.3	43	78.6	4	2.2	4	1.2	64	19.5
1	1.8	44	80.4	5	2.7	5	1.5	65	19.8
1	2.2	45	82.2	6	3.3	6	1.8	66	20.1
1	2.7	46	84.1	7	3.8	7	2.1	67	20.4
1	3.2	47	85.9	8	4.4	8	2.4	68	20.7
2	3.6	48	87.7	9	4.9	9	2.7	69	21.0
2	4.1	49	89.6	10	5.5	10	3.0	70	21.3
2	4.5	50	91.4	11	6.0	11	3.4	71	21.6
2	5.0	51	93.2	12	6.6	12	3.7	72	21.9
3	5.4	52	95.0	13	7.1	13	4.0	73	22.3
3	5.9	53	96.9	14	7.7	14	4.3	74	22.6
3	6.4	54	98.7	15	8.2	15	4.6	75	22.9
3	6.8	55	100	16	8.7	16	4.9	76	23.2
4	7.3	56	102	17	9.3	17	5.2	77	23.5
4	7.7	57	104	18	9.8	18	5.5	78	23.8
4	8.2	58	106	19	10.4	19	5.8	79	24.1
4	8.6	59	107	20	10.9	20	6.1	80	24.4
5	9.1	60	109	21	11.5	21	6.4	81	24.7
5	9.6	61	111	22	12.0	22	6.7	82	25.0
5	10.0	62	113	23	12.6	23	7.0	83	25.3
5	10.5	63	115	24	13.1	24	7.3	84	25.6
6	10.9	64	117	25	13.7	25	7.6	85	25.9
6	11.4	65	118	26	14.2	26	7.9	86	26.2
6	11.8	66	120	27	14.8	27	8.2	87	26.5
6	12.3	67	122	28	15.3	28	8.5	88	26.8
7	12.8	68	124	29	15.9	29	8.8	89	27.1
8	14.6	69	126	30	16.4	30	9.1	90	27.4
9	16.4	70	128	31	17.0	31	9.4	91	27.7
10	18.2	71	129	32	17.5	32	9.8	92	28.0
11	20.1	72	131	33	18.0	33	10.1	93	28.3
12	21.9	73	133	34	18.6	34	10.4	94	28.7
13	23.7	74	135	35	19.1	35	10.7	95	29.0
14	25.6	75	137	36	19.7	36	11.0	96	29.3
15	27.4	76	138	37	20.2	37	11.3	97	29.6
16	29.2	77	140	38	20.8	38	11.6	98	29.9
17	31.0	78	142	39	21.3	39	11.9	99	30.2
18	32.9	79	144	40	21.9	40	12.2	100	30.5
19	34.7	80	146	41	22.4	41	12.5	200	61.0
20	36.5	81	148	42	23.0	42	12.8	300	91.4
21	38.4	82	149	43	23.5	43	13.1	400	121.9
22	40.2	83	151	44	24.1	44	13.4	500	152.4
23	42.0	84	153	45	24.6	45	13.7	600	182.9
24	43.8	85	155	46	25.2	46	14.0	700	213.4
25	45.7	86	157	47	25.7	47	14.3	800	243.8
26	47.5	87	159	48	26.2	48	14.6	900	274.3
27	49.3	88	160	49	26.8	49	14.9	1000	304.8
28	51.2	89	162	50	27.3	50	15.2	2000	609.6
29	53.0	90	164	51	27.9	51	15.5	3000	914.4
30	54.8	91	166	52	28.4	52	15.8	4000	1219.2
31	56.6	92	168	53	29.0	53	16.2	5000	1524
32	58.5	93	170	54	29.5	54	16.5	6000	1829
33	60.3	94	171	55	30.1	55	16.8	7000	2134
34	62.1	95	173	56	30.6	56	17.1	8000	2438
35	64.0	96	175	57	31.2	57	17.4	9000	2743
36	65.8	97	177	58	31.7	58	17.7	10000	3048
37	67.6	98	179	59	32.3	59	18.0		
38	69.4	99	181	60	32.8	60	18.3		
39	71.3	100	182						

注意 尋ヨリ米ニ換算スル表ニ在リテハ表値以下ノ數字ハ總テ切捨テトス、
其ノ他ノ表ニ在リテハ總テ四捨五入トス

昭和19年7月28日印刷

昭和19年7月30日發行

發行者 水路部

東京都京橋區築地5丁目

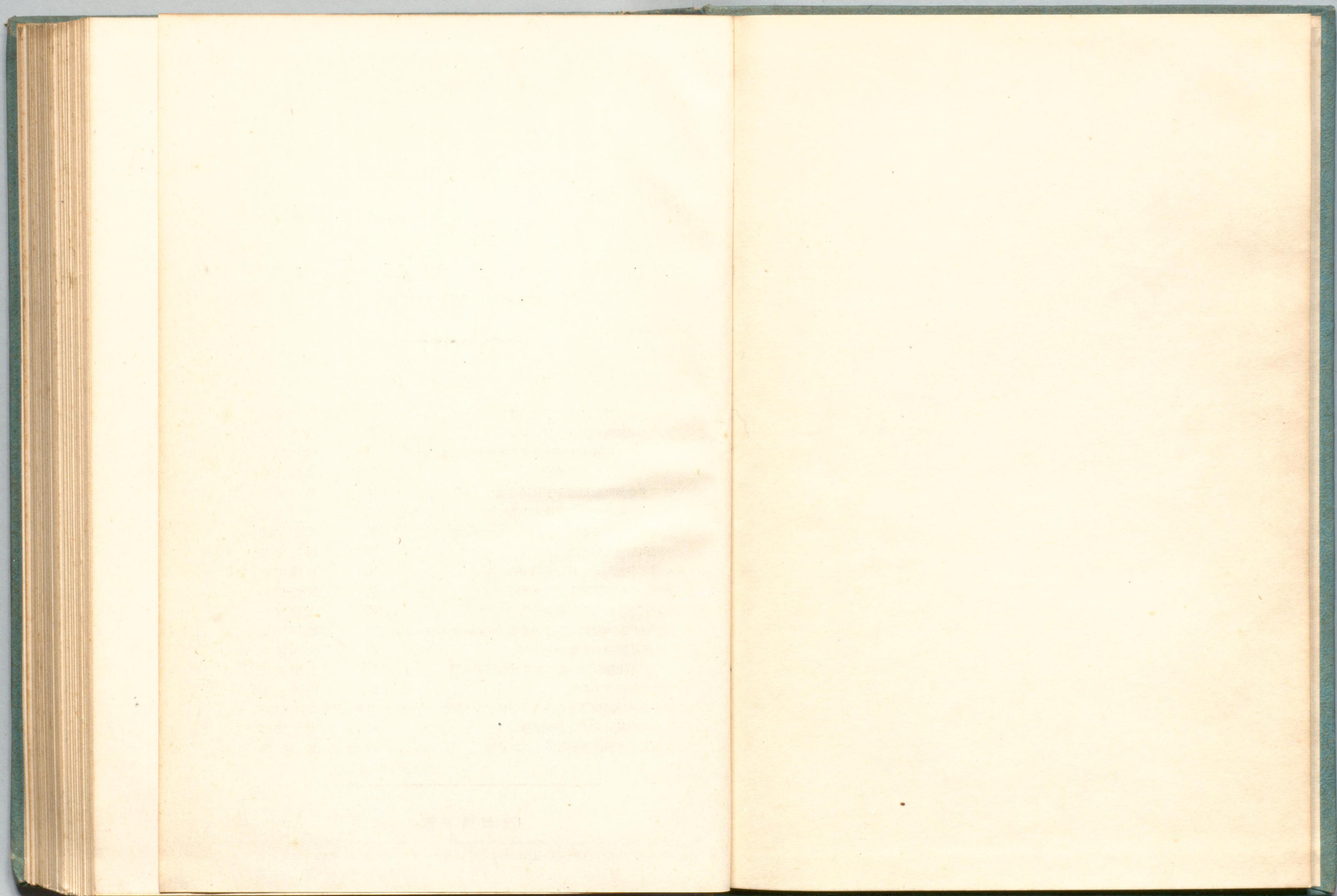
印刷者 精興社

東京都神田區錦町3丁目11

販賣所

東京都龜町區丸ノ内2丁目20番地ノ1	日本郵船株式會社
橫濱市中區海岸通3丁目9番地	同 橫濱支店
名古屋市西區御幸本町通9丁目8番地(日本徴兵館内)	同 名古屋支店
大阪市西區川口町26番地	同 大阪支店
神戸市神戸區海岸通1丁目10番地	同 神戸支店
門司市門字棧橋通1番地ノ1	同 門司支店
長崎市常盤町4番地(東亞海運株式會社長崎支店)	同 長崎代理店
函館市船場町19番地	同 函館支店
小樽市手宮町1丁目15番地	同 小樽支店
臺灣基隆市明治町1丁目8番地	同 基隆出張所
臺灣高雄市湊町1丁目14番地	同 高雄支店
朝鮮釜山府大橋通2丁目14番地(朝鮮郵船株式會社釜山支店)	同 釜山代理店
大連市山縣通181番地	同 大連支店
中華民國上海特別市第1區黃浦灘路第31號	同 上海支店
香港中住吉通10番地	同 香港支店
神戸市神戸區海岸通5番地(商船ビル6階)	日本海運協會神戸支部
廣島市宇品町3丁目328番地	同 宇品支部
東京都日本橋區蠣殼町1丁目36番地	木船海運協會

〔定價金6圓〕



水-57イ



1200701521637