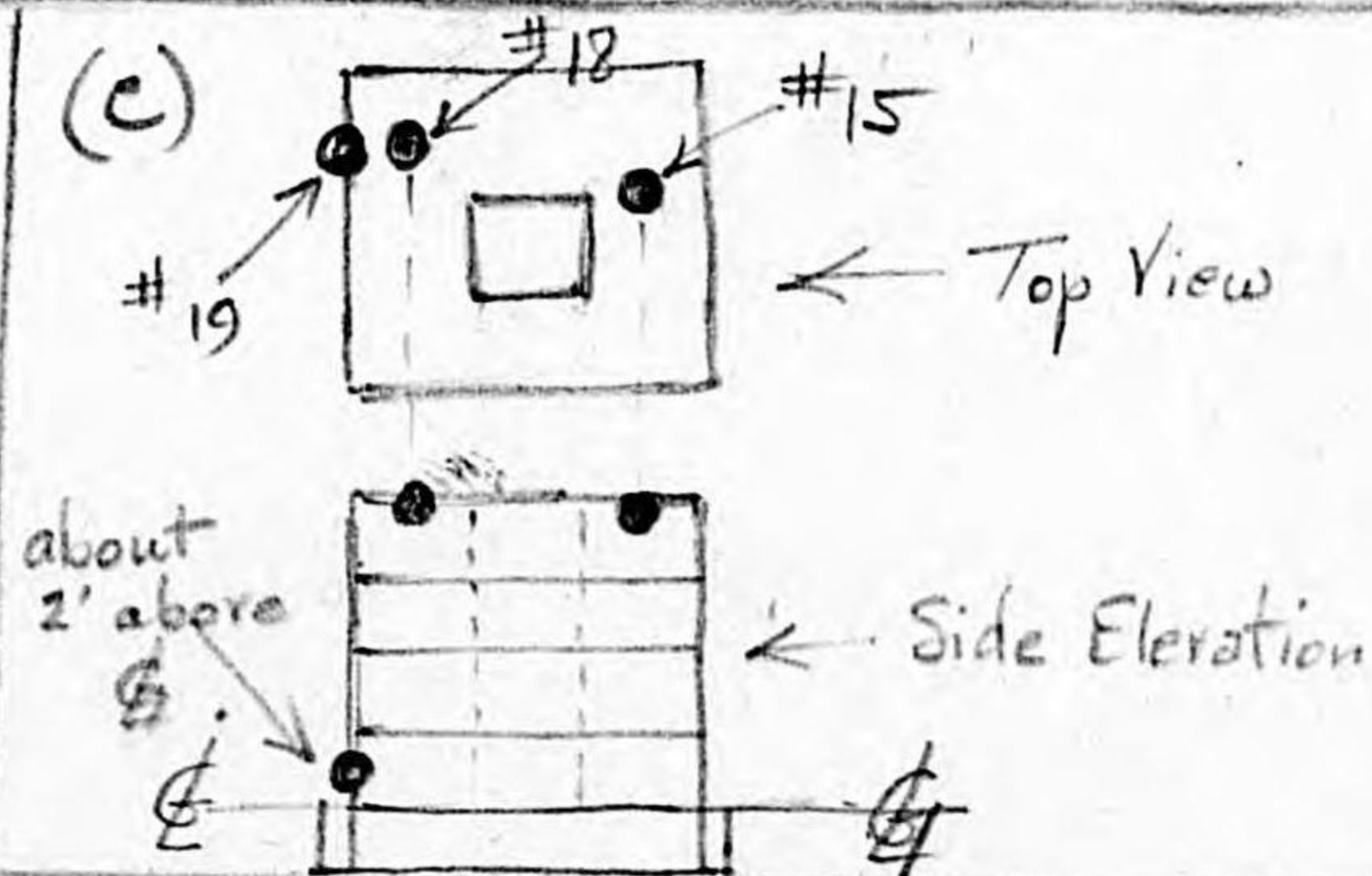
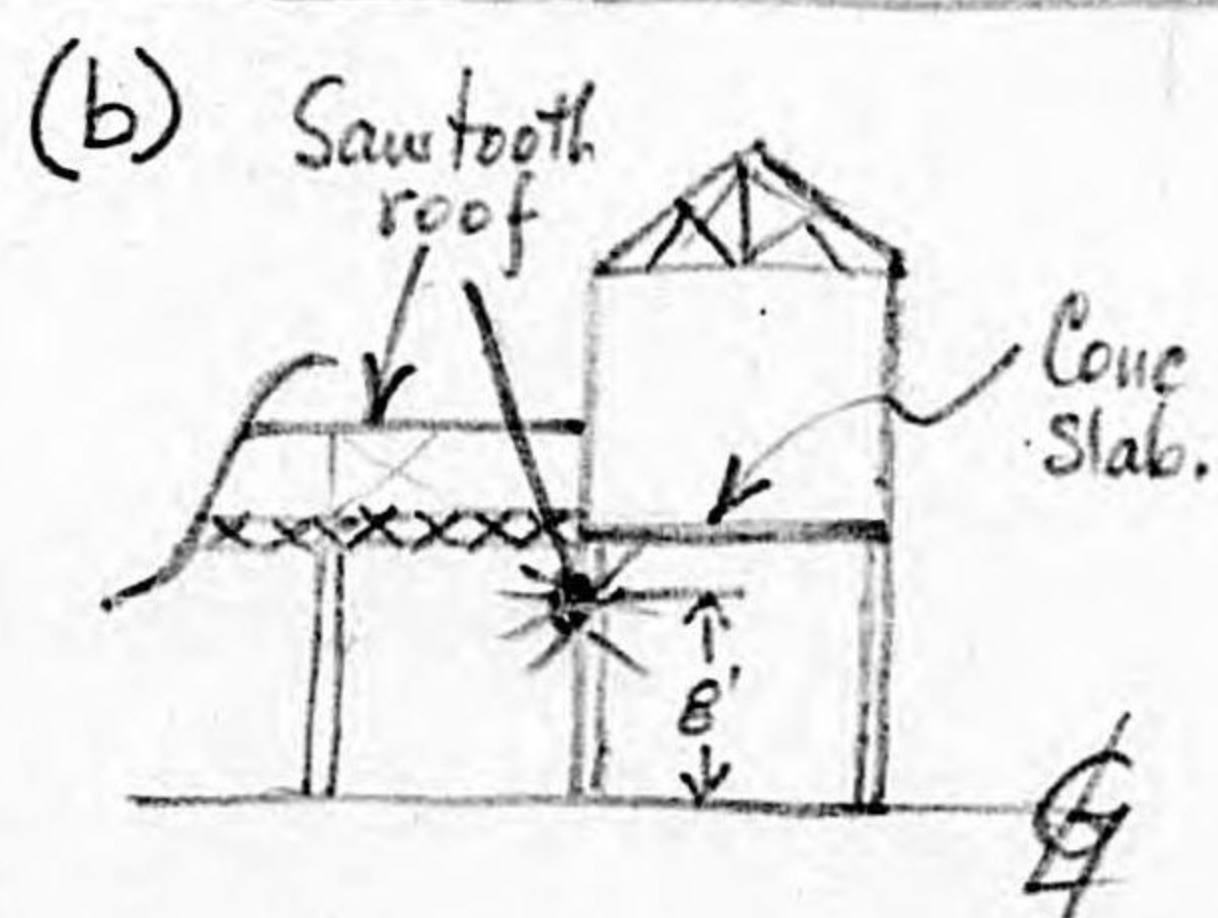
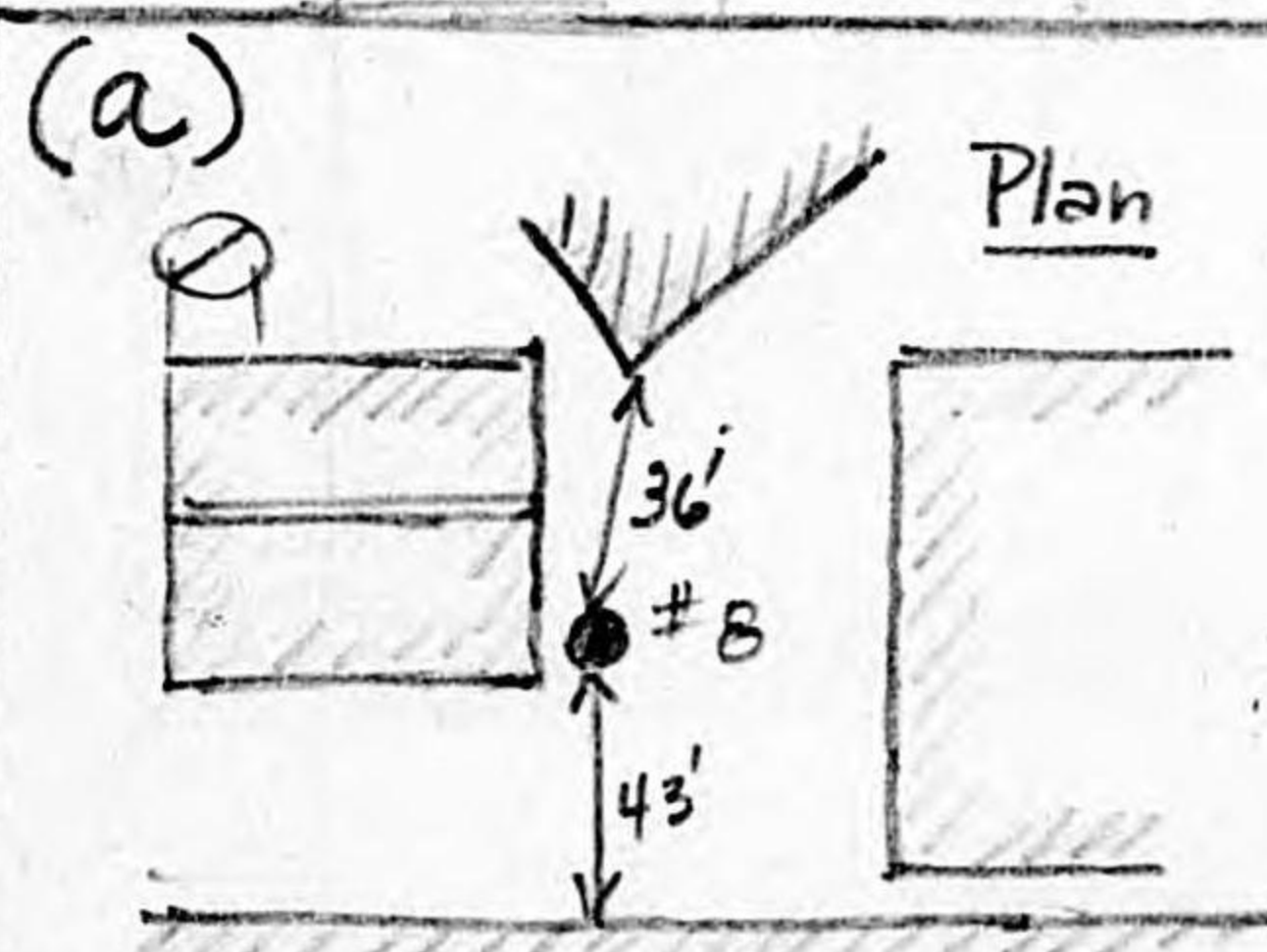


TARGET 90:20-198

H.E. BOMB DATA SHEET

Bomb No.	Bomb Size	D.H. N.M. or M.	CRATER DIA.	Height of Deton.	(F = filled) - Remarks -
1	2000	N.M. ✓	40'		Deep crater in walkway along canal. Heavy fragments in tall stack very close to bomb.
2	2000	D.H. ✓	-	→	Det about 6' above boiler - Roof initiated.
3	4000	N.M. ✓	F	-	Bomb crater center is 40' from Bldg. 10.
4	4000	D.H. ✓	-	10'	
5	4000	N.M. ✓	F	-	
6	1000	D.H. ✓	-	5'	Possibly a 2000# GP. Bomb hit a machine.
7	4000	D.H. ✓	-	8'-10'	Hit roof member very close to end of crane
8	4000	N.M. ✓	40'	-	See sketch (a) for location
9	1000	D.H. ✓	-	10'-12'	Very little damage. Looks like 500 GP.
10	4000	D.H. ✓	-	18'	Detonation in roof members.
11	4000	D.H. ✓	F	-	
12	4000	D.H. ✓	-	10'	
13	4000	N.M. ✓	45'	-	Crater dia. is estimated
14	1000	D.H. ✓	-	8'	See sketch (b) for position of detonation
15	4000	D.H. ✓	-	→	Detonation was on roof. See sketch (c)
16	2000	D.H. ✓	-	→	Detonation was on roof
17	4000	N.M. ✓	F	-	
18	4000	D.H. ✓	-	→	Detonation on roof. See sketch (c)
19	2000	D.H. ✓	-	→	Detonation on side of column. See sketch (c).
20	4000	N.M. ✓	43	-	
21	4000	N.M. ✓	F	-	Center of crater 22' out.
22	4000	N.M. ✓	F	-	" " " 15' out (approximation).
23	4000	D.H. ✓	-	8'	
24	4000	D.H. ✓	-	12'	
25	4000	N.M. ✓	F	-	Center of crater 15' out.
26	4000	D.H. ✓	46'	-	" " " 5' inside bldg.
27	4000	D.H. ✓	-	35'	See sketch (d)
28	4000	D.H. ✓	44'	-	
29	4000	D.H. ✓	-	8'	
30	4000	N.M. ✓	→	-	Crater alongside RC foundation.
31	4000	N.M. ✓	43'	-	Crater 45' outside fence.
32	4000	N.M. ✓	36'	-	Crater 50' from edge of boiler house.
33	1000	M ✓	35'	-	Crater 40' " " " fence.
34	2000	M ✓	34'	-	
35	2000	M ✓	33'	-	
36	4000	M ✓	35'	-	
37	4000	M ✓	44'	→	Removed from plot.



94e(1) Doc (d)

sketch (d) →

**U. S. S. B. S.
DAMAGE ASSESMENT WORK SHEET**

FUNCTION				NAME OF PLANT		
				TYPE OF INDUSTRY		
STRUCTURAL ANALYSIS	YEAR BUILT	ORIGINAL USE	REMARKS			
	FLOOR	TYPE	THICKNESS			
	FLOOR	TYPE	THICKNESS			
	WALLS	TYPE	THICKNESS			
	ROOF MATERIAL	TYPE	THICKNESS			
	TRUSS	TYPE	SPAN			
	CRANES NO.	TYPE	LOAD CAPACITY			
	MACHINERY REMOVED TO		REASON			
	REPAIRS AND CLEARANCES					
	NEW CONSTRUCTION					
			CITY	TARGET NO.	BLDG. NO. <div style="border: 1px solid black; border-radius: 50%; width: 40px; height: 40px; display: flex; align-items: center; justify-content: center; margin: 0 auto;">6</div>	
			LAT.	LONG		
			INTEL. SUBJECT NUMBER			DATE
			P H O T O G R A P H Y			ROLL - NEG NUMBER
			INTERIOR	EXTERIOR		
			STRUCT. DETAIL	NO. OF EXPOSURES		
TEAM						

DAMAGE ASSESMENT	DESTROYED
	STRUCTURAL DAMAGE
	SUPERFICIAL DAMAGE
	ROOF DISTURBANCE
	MINOR DAMAGE

GENERAL NOTES - SECTIONS - PLANS - ETC -
Sketches (continued)

(d)

BLDG. NUMBER

AICHI AIRCRAFT WORKS - FUNAKATA PLANT - TARGET 2010.

198

FIRE DAMAGE - 19 MARCH 1945.

No.	Roof.	Walls.	Occupancy	Remarks.
①	2e Corr. Asb. on Bds on Wd. St. Tr.	Corr. Ir. on Bds. on Wd. St. Tr.	Torpedo making Machinery.	Building ^{contents} & contents a total loss. Fire extinguished by fire dept.
②	7c Corr. Asb. on St. Tr.	Corr. Ir. on St. Tr.	Warehouse	Occupancy a total loss. Superficial damage to steel.
③	5cd. "	"	Heavy Machinery	Seven fire bombs (1.13) dropped in building - extinguished by employees. No damage.
④	2b. Corr. Asb. on Bds. on St. Tr.	Corr. Ir. on Bds. on St. Tr.	Machinery.	Fire damage to roof only. Repaired and damaged again on 9 June 1945.
⑤	2d Corr. Asb. on St. Tr.	Stucco on Wd. on St. Tr.	"	"

FIRE DAMAGE - 17 MAY 1945.

⑥	7. Corr. Asb. on St. Tr.	Corr. Ir. on St. Tr.	Warehouse. Spray booths. Paint. Tables	Occupancy a total loss. Superficial damage to steel. Repaired, then damaged again by raid of 9 June
⑦	7b Corr. Asb. on Wood.	Corr. Iron on Wood	Castings in Wd. Boxes and shelves.	Building and contents a total loss.
⑧	Shrine	—	Shrine	Wood building & trees seriously damaged.
⑨	13a Wood	Wood	Warehouse	Building & occupancy a total loss.
⑩	13b Wood	Wood	Torpedo testing	Building & occupancy a total loss.
⑪	12a "	"	Finishing Shop Warehouse	"

FIRE DAMAGE - 9 JUNE 1945.

No.	Roof	Wall	Occupancy	Remarks
⑫ 22a	Corr. Asb. on Bds. on St. Tr.	Concrete	Two rotary converters three oil cooled transformers	✓ Property of Nagoya Municipal ✓ Electric Bureau - street railway ✓ system. Building and contents, ✓ a total loss.
⑬ 22c	Wood	Concrete & Wood	Acetylene Gas Plant Wash Room.	✓ Building knocked down by blast. ✓ Debris burned. Contents a total loss.
⑭ 2d.	Corr. Asb on St. Tr.	Stucco over Wd. on St. Tr.	Machinery	✓ Wood debris burned. Damage to building by H.E. Superficial damage to contents. ✓ Fire in roof only. Est. area 20' x 40'
⑮ 2b.	Corr. Asb. on Bds. on St. Tr.	Corr. Ir. on Wd. on St. Tr.	"	✓ Roof covering stripped by H.E. Fire damage to occupancy moderate.
⑯ 7c	Corr. Asb. on St. Tr.	Corr. Ir. on St. Tr.	Assembling & Finishing Many wood tables.	✓ Building knocked down by blast. ✓ Wood debris burned. Damage to occupancy slight.
⑰ 9.	Wood	Wood	Sand blasting	✓ Building knocked down by blast, debris burned.
⑱ 11c	"	"	Storage.	✓ " "
⑲ 11a	"	"	Shed.	✓ " "
⑳ 11a	"	"	"	✓ " "
㉑ 15b.	"	"	Pipe Shop	✓ " "
㉒ 14a	"	"	Scrap Storage.	✓ " "
㉓ 14b.	Corr. Asb on Bds. on St. Tr.			✓ Small fire in roof caused by H.E.
㉔ 10a	"			✓ " "
㉕ 10a	"		Transformers & Elec. Equipment	✓ Roof covering stripped by H.E. Est. 2-30 kva & 3-50 kva. transformers & electrical equipment burned.

No.	Roof.	Walls	Occupancy	Remarks
(26) 10d.	Wood	Wood	Air compressors.	<ul style="list-style-type: none"> ✓ Building damaged by blast. ✓ Three 16.4 m³/min air compressors suffered moderate damage. ✓ Three 100 H.P. motors a total loss.
(27) 10c	"	"	"	<ul style="list-style-type: none"> ✓ Small fire in wood on roof and siding, from above fire.
(28) 10j	"	"	Finishing	<ul style="list-style-type: none"> ✓ Building a total loss. ✓ Machinery about 20% damaged by ensuing fire.
(29) 23	Corr. Asb. on St. Tr.	Corr. Iron on St. Fr.	Office - Parts Stor.	<ul style="list-style-type: none"> ✓ Roof covering stripped off by H.E. ✓ Occupancy a total loss by fire.
(30) 23	"	"	"	<ul style="list-style-type: none"> ✓ Four transformers destroyed. ✓ Small office area burned.
(31) 23	Wood	Wood	Wash room	<ul style="list-style-type: none"> ✓ Washroom damaged by blast. Fire spread into adjoining building & damaged several lathes.
(32) 23	Corr. Asb. on St. Tr.	Corr. Ir. on St. Fr.	Office	<ul style="list-style-type: none"> ✓ Small office area burned.
(33) 23	C.A. St. Tr.	C. I. St. Fr.	Office & Gauge Storage	<ul style="list-style-type: none"> ✓ Roof covering stripped off by H.E. ✓ Small salvage to occupancy - damaged by fire.
(34) 25	P.C.	P.C.	Main office	<ul style="list-style-type: none"> ✓ 2nd & 3rd stories gutted by fire. No fire damage on 1st story.
(35) 26a 26b.	C.A.S. Tr.	Wd. on St. Fr.	Office	<ul style="list-style-type: none"> ✓ Occupancy a total loss. ✓ Steel framework damaged.
(36) 28	C.A. St. Tr.	Corr. Iron	Dining Room	<ul style="list-style-type: none"> ✓ Occupancy burned. Roof covering stripped by H.E. Superficial damage to steel.
(37) 24a 24b.	Corr. Asb. on St. Tr.	Corr. Ir.	Office	<ul style="list-style-type: none"> ✓ Roof covering stripped. Occupancy a total loss. Superficial damage to steel.

No.	Roof	Walls	Occupancy	Remarks
(38) 24 b.	Corr. Asb. on St.	Corr. Ir.	Office	Building damaged by H.E. Small office area total loss.
(39) 19 c				Small fire in wood window Frame
(40) 20 21	Wood	Wood	Washroom Compressed House	Most of building burned Moderate damage to occupancy.
(41) 32				Small fire in oil and flammable liquids.
(42) 32			Office	Small office area burned.
(43) 31				Fire in office furniture. Desks & Tables.
(44) 31				Fire in combustible occupancy.
(45) 31				Fire in office combustible occupancy.
(46) 33 b.	Corr. Tr. St. Tr.		Manufacture of Wood propellers	Combustible occupancy a total loss. Moderate damage to steel.
(47) 33 a			17 ft. Wood Boxes. Packing - Wood Stor.	Roof stripped by H.E. Fire burned combustible material & damaged machinery.
(48) 30	Rein Conc.	Rein Conc.	Electric Substation	Transformers, wiring & equipment a total loss.
(49) 29	"	"	Office, Drawing Rm. Machine Shop.	Building damaged by H.E. Fire destroyed combustible occupancy and damaged machinery.
(50) 27 c	Rein Conc Exposed steel	"	Telephone Switchboard. Blueprint & Record Stor.	Building destroyed by H.E. Fire destroyed combustible material & exposed steel.

No.	Roof	Walls	Occupancy	Remarks.
⑤ 27b.	R.C.	R.C.	Office, Testing Rm. Laboratory	✓ Building damaged by H.E. Occupancy a total loss.
⑤ 27a.	Tile on Wood	Wood	Office	✓ Building & occupancy a total loss.
⑤ 34	Corr. Asb. on Wld.	Conc. Wld. Col.	Office, Fire Dept. Garage	✓ "
⑤ 34	"	"	Parts Warehouse	✓ "
⑤ 35b.	Tile on Wld. on St. Tr.	Stucco	Oil & Gasoline Storage	✓ "
⑤ 35c.	"	"	Steel Warehouse	✓ "
⑤ 35a.	Tile on Wld.	Stucco on Wld.	Machine Shop	✓ "
⑤ 36	"	"	Steel Storage	✓ Building destroyed 20% occupancy destroyed.
⑤ 38b	Corr. Asb on St. Tr.	Corr. Ir. St. Fr.	Machine Shop - Stamping Wd. Tables, Shelves.	✓ Roof covering stripped by H.E. Combustible occupancy a total loss.
⑤ 38b	"	"	Office	✓ Furniture and papers in office destroyed.
⑤ 38b	"	"	Storage - Parts on Wld. Shelves.	✓ Combustible occupancy destroyed.
⑤ 38b	"	"	"	✓ "
⑤ 39b	Corr. Asb. St. Tr.	Corr. Iron St. Fr.	Office	✓ Roof stripped by H.E. Combustible occupancy destroyed
⑤ 39b	"	"	Machine Shop Tables & Desks	✓ Slight damage to machinery
⑤ 39c	Corr. Iron Asb. on Wld.	Corr. Iron on Wld.	Warehouse	✓ Building & occupancy destroyed.
⑤ 39d	"	"	Assembly Operations	✓ "
⑤ 39e	"	"	Office & Storage	✓ Being taken down at time of raid of 9 June. Debris burned.

No.	Roof	Walls	Occupancy	Remarks.
37b.	Corr. Asb. St. Fr.	Wld. Partition	Compressor Room.	Two 100 HP. motors destroyed. Compressors - OK.
37b.	"	Corr. Ir. St. Fr.	Assy. Operations Wld. tables & shelves	Roof stripped by H.E. Five destroyed combustible material.
37a	"	"	"	"
37a+b.	"	"	Paint Rm., Warehouse Assy. Wld. tables & shelves	"
39b	"	"	Cutting and stamping Wld. Tables	"
39b	"	"	Office	"
39b	"	"	Cutting & stamping Wld. tables	"
39b	"	"	Machin Gun Mfg. Transf. Rm. Wld. Partition	"
39b	"	"	Office	"
42	"	"	Bicycle Repair Station	30 Bicycles destroyed
41b	Wld.	Wld.	Wind Tunnel.	Destroyed building over concrete wind tunnel.
41c	Wld. on St. Fr.	Wld. on St. Fr.		Building damaged by H.E. Combustible occupancy burned.
41a.	Wld. ?	Wld. ?	Sleeping Quarters Storage. Mfg. of small parts.	Building & occupancy damaged by H.E. & Fire.
40c	Corr. Iron on Bds. on St. Fr.			Burned.
40b	Corr. Asb St. Fr.		Hardening Room	Occupancy damaged. St. Fr. damaged.
40a.				Building & occupancy burned.

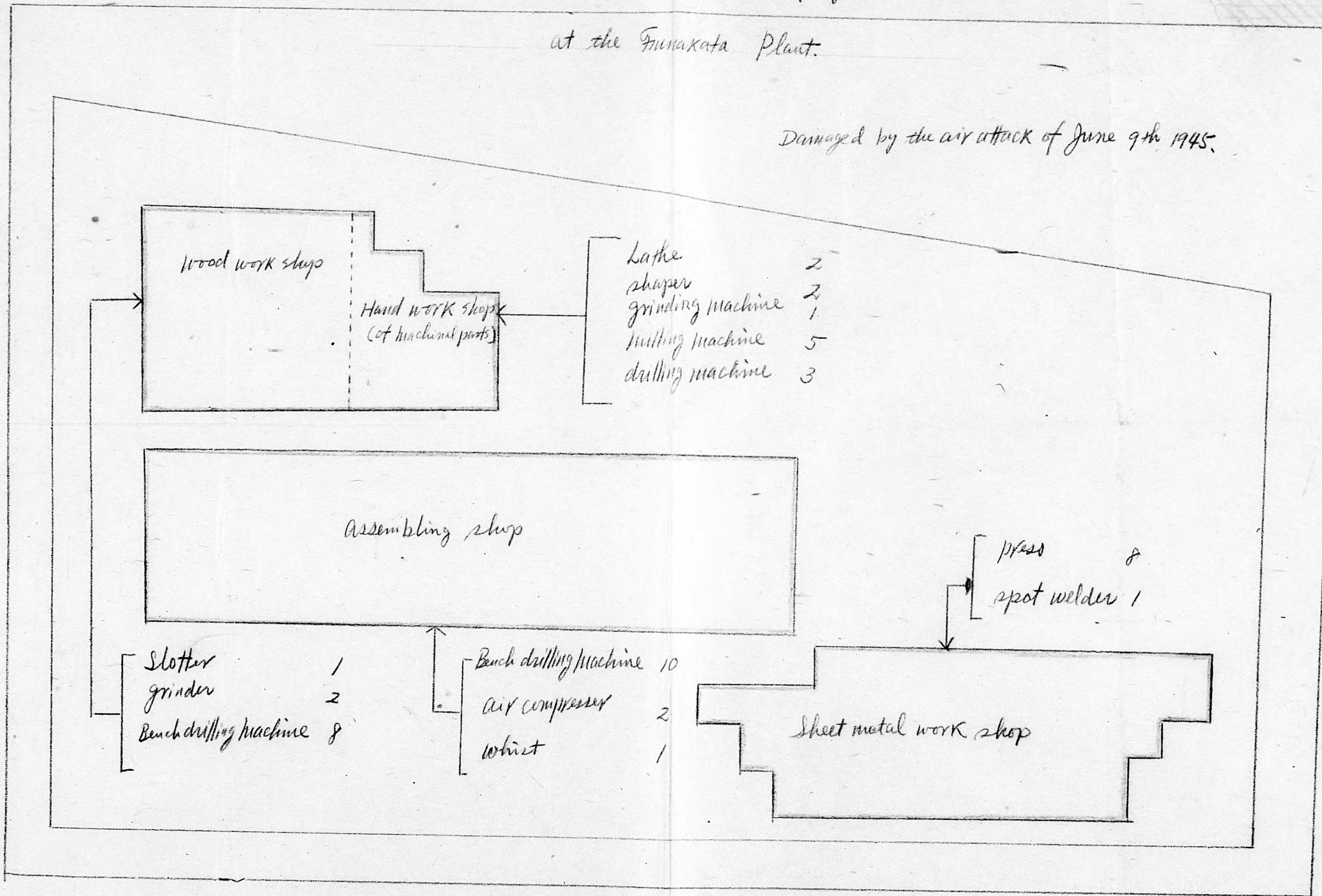
No. 2-2.b.

Physical Damage Sustained to machinery by the air attack

at the Funakata Plant.

Damaged by the air attack of June 9th 1945.

32
1
12
12



Aichi - Funakata

No. 2-2b.

Physical Damage Sustained to Machinery by the air attack
shops in Funakata
at the Nankō Plant.

