



FROM
THE LIBRARY
OF
SIR WILLIAM OSLER, BART.
OXFORD

7666 w

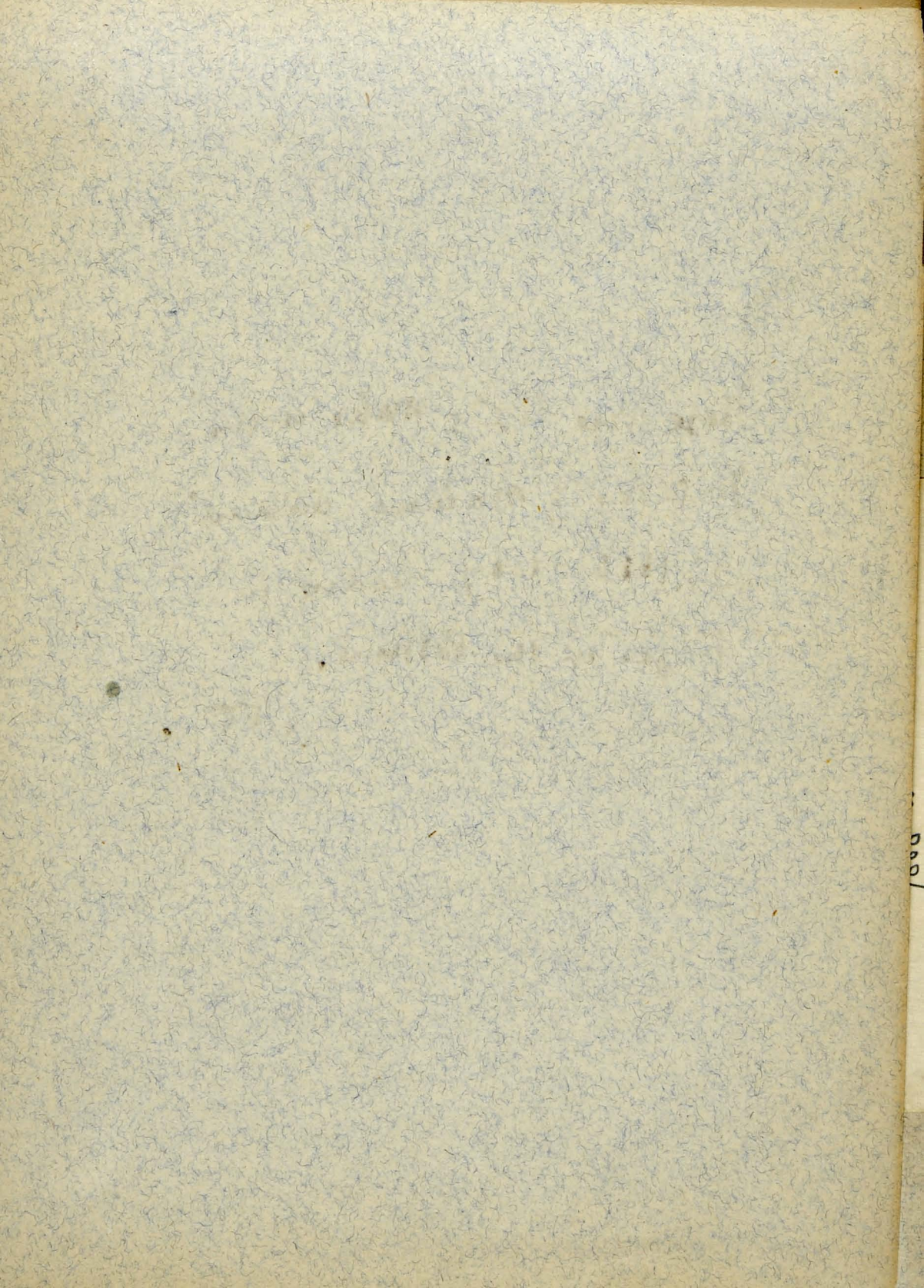
Musa sinu

1713 Spring Garden

These were W.O. notes on his
70 cases of Malacca Shredd
in 1866 - 1867 leading to
paper in the B.M.S.

JTC.

4 photostats sent to Phila. for Odeur Memorial
at Blockley, 22 v 40, v. 1, from "v", fol. 8
+ from the "w", fol. 15 r & v, 216
also to W.S. MacCallum one of his father's
poor, fol. 28.



L 1. John. Carlson W. 8. 2.

From Esthnum. 5 weeks at place - left there
 2 weeks ago. At sea 6-7. week
 at Esthnum. no chills. while at Esthnum.
 chills. at sea 10 m. 12 days.

In chills none.

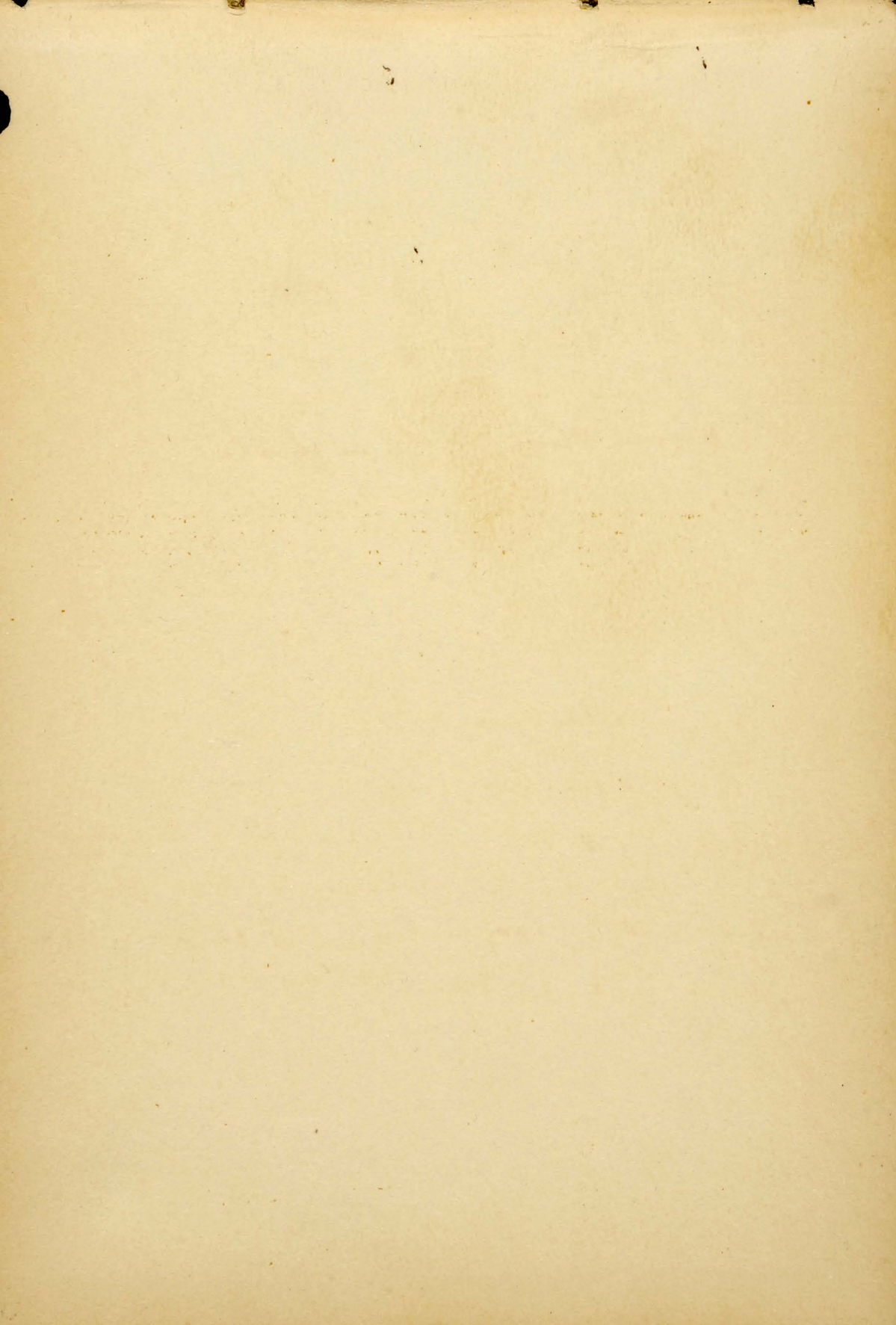
3 slides. . . flagellate form . one .

one crescent.

several. intracellular forms.

crescent-

25-



20/107

Case L 11 ²⁵⁻ Hanley W. C. G. B.

ch + f - for six days.

None in blood ... B. taken in shell

2.

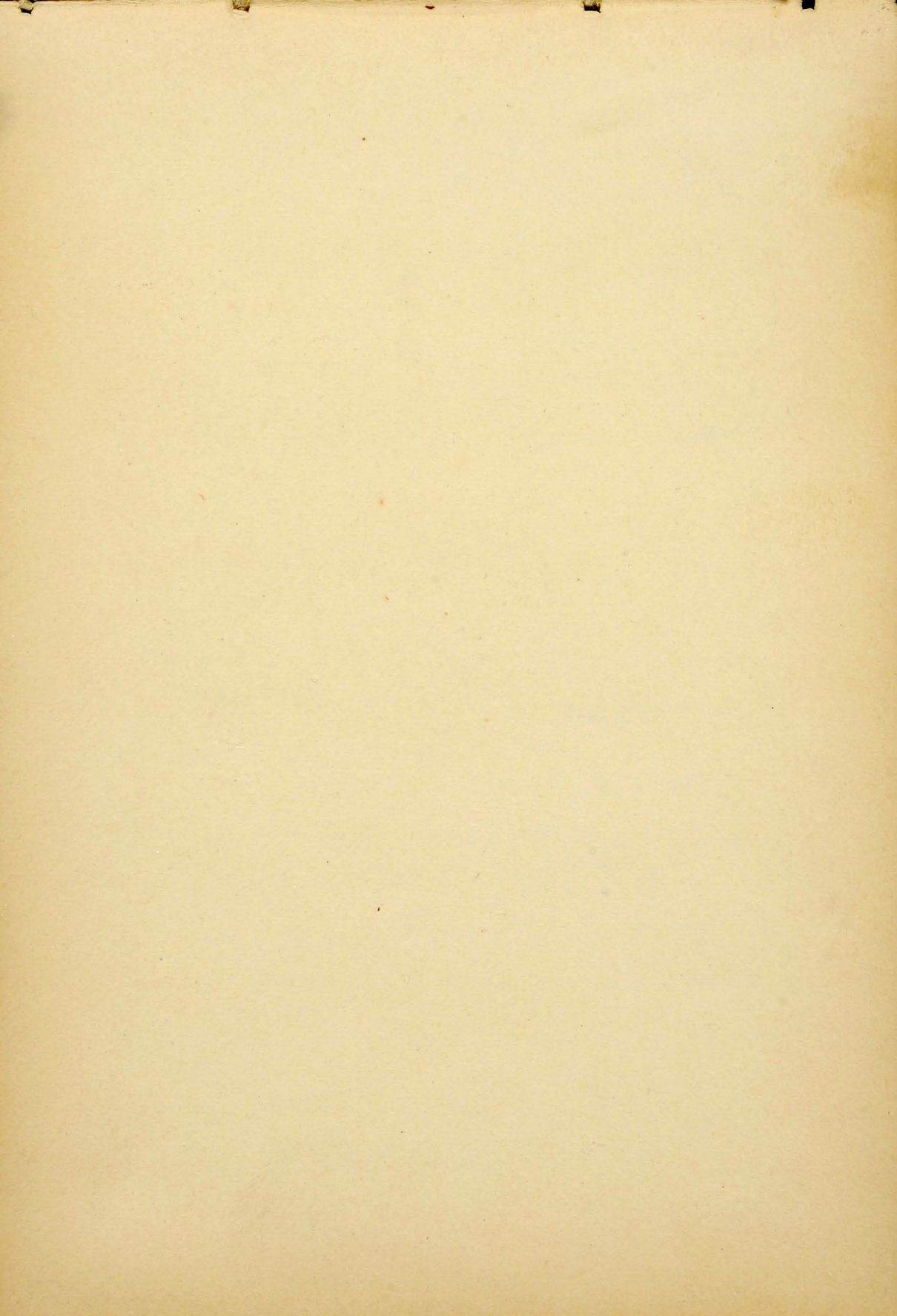
21. None in blood. not in shell.

1

22/11/56. Sullivan.

none found.

He was admitted Oct. 8. Mal for 2 months
Had 2. L. d. Had 3 tertian paroxysms
18th 20th & 22nd. again on 5th 7th & 8th Nov.
Present all time: none and none.



20/10/86

L 111

Andrew McFellens W. 2.

on Saturday. 1st chill. Again in Eve.

3 on Sunday. 2 on Mon. 2 on Tues.

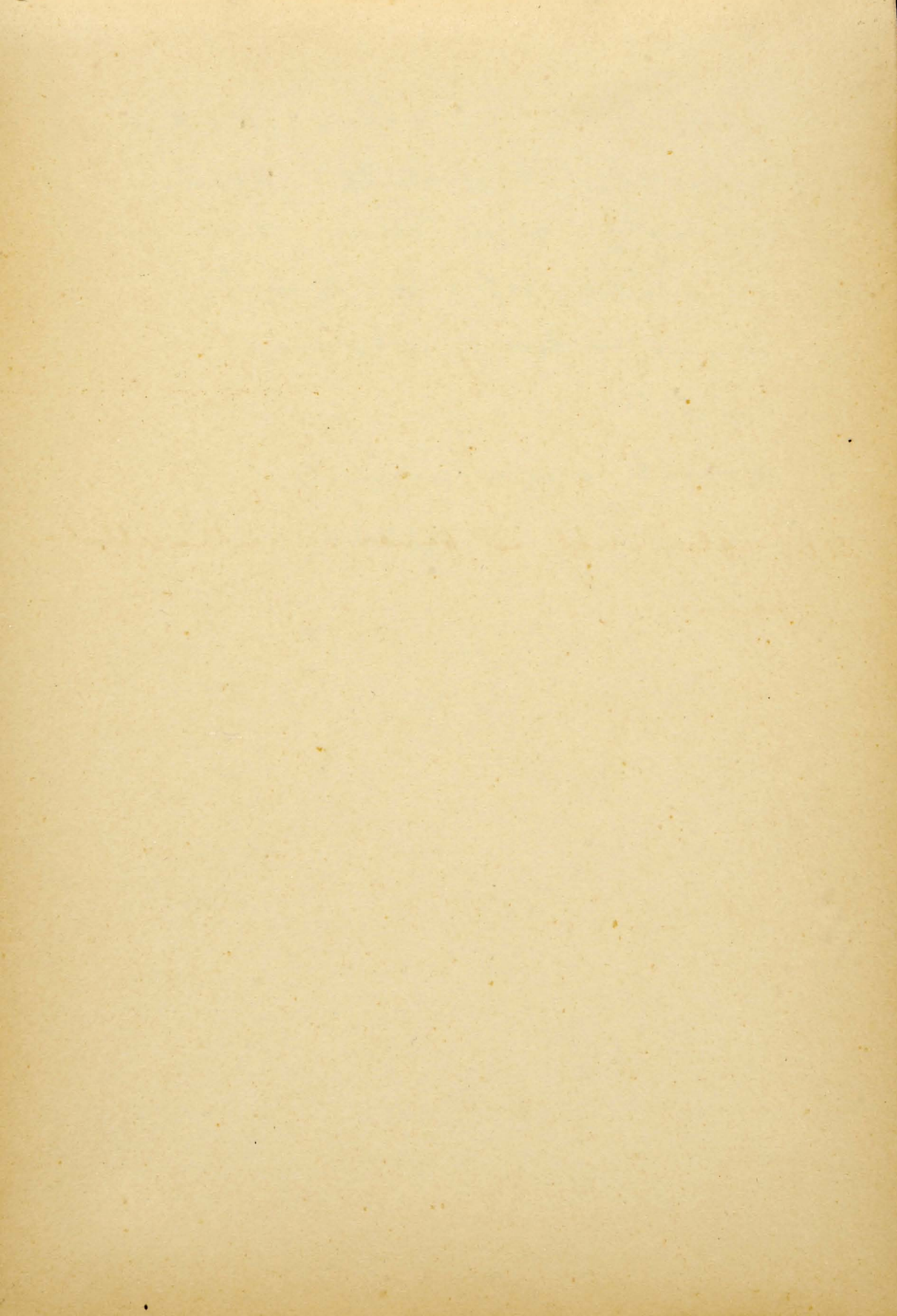
Has had chills before in month.

Has taken no medicine. Spleen.

A. not in chill.

No pigment. none in corpuscle.

Robt. W. W. W.



20710/86

L1v.

Duckenson.

H. in shell.

Intracellular forms. many. several.
small round ones free. ☺

21. after shell is fewer. intracellular
forms

Case

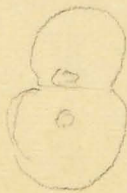
21st.

Williams W. G.

6 days. B. L. Cutler after. Yesterday
the last one

None found.

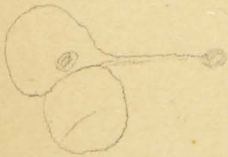
12.05



12.40



3.pu

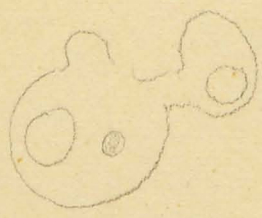
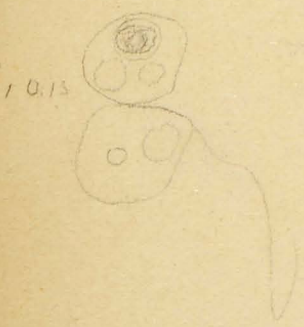
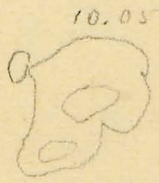
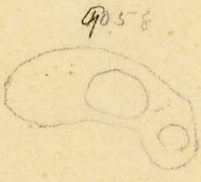


Case,
Whitman.

negative

Dysentery

10/22/89



1244 1/3 size
large placoid mass with 3 attached
bodies

25 lbs.

Case

Ward 5. B 3.

Woman.

never time small pieces.

[Faint, illegible scribbles]

55

Ward . B 27. W. 6. . chill thro' am
9. In fever now.

Chill a month ago. chill ev'g other day
at first. now. ev'g day. Last week none at
all. Saturday one. one yesterday & one thro' am
Is anemic spleen enlarged

Bodies in red. not the pigmented ones but those
in spaces.



Pigmented one. in mere shell.

In fever.
26th. Many intracellular pigment. bodies

29th. Still present

John Dempsey. W 2. 25'

Exam one before - negative . . Blood plaques
abundant -

Blood plaques very abundant . red normal
save many small . no plasmodia .
white abundant

29th

Jessie ~~Hughes~~. Susan Sept.

First chills 10 days. - chills only. - 3 days
f. began. & has been. continued. no positive
sign. sweating a little. - Sp. D. measured.

Examination negative

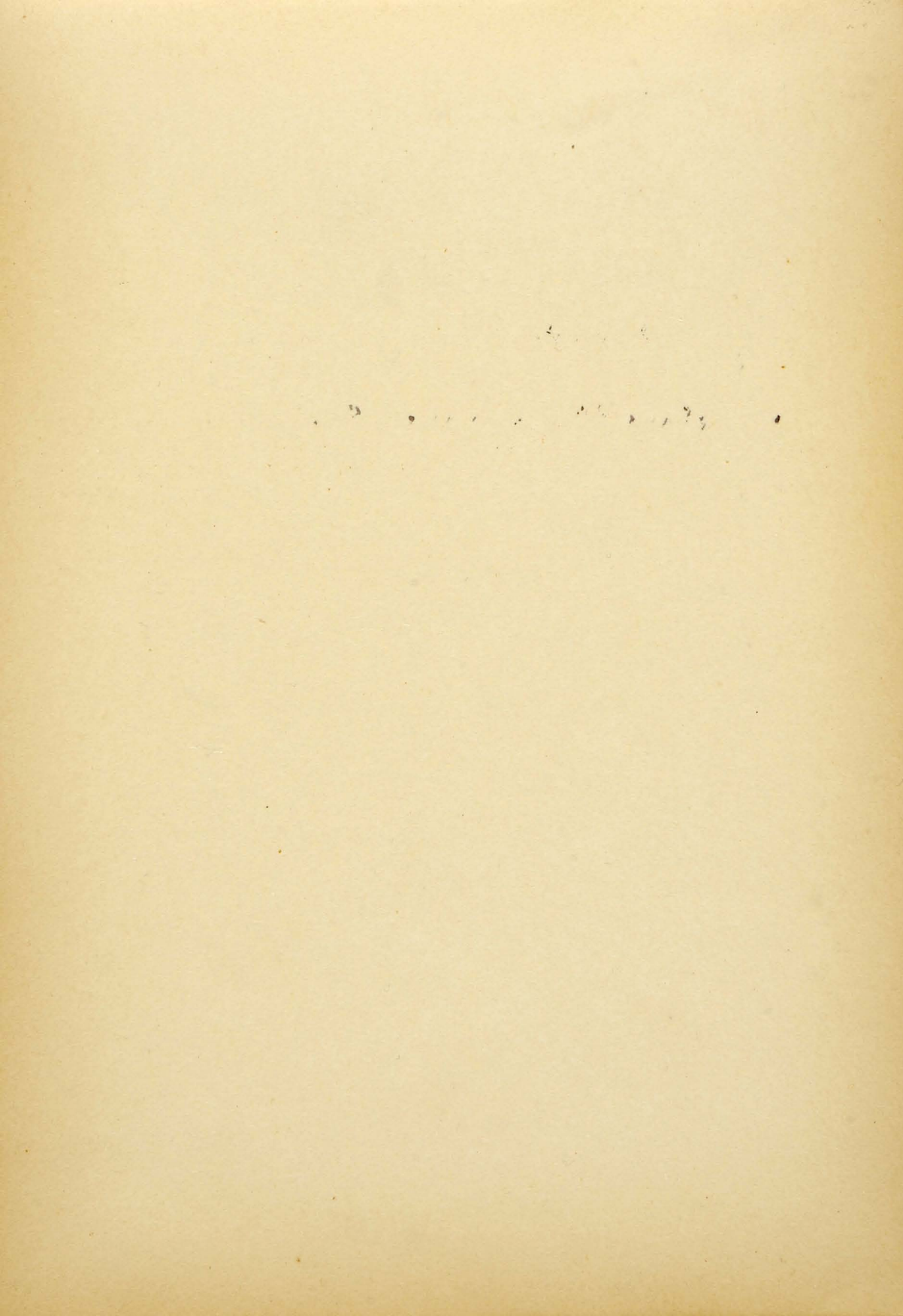
LVI

29

M. a. Burke W. 3. 7.

Had. chills in a.p. for 2 months - sometimes
daily sometimes every day.

numerous



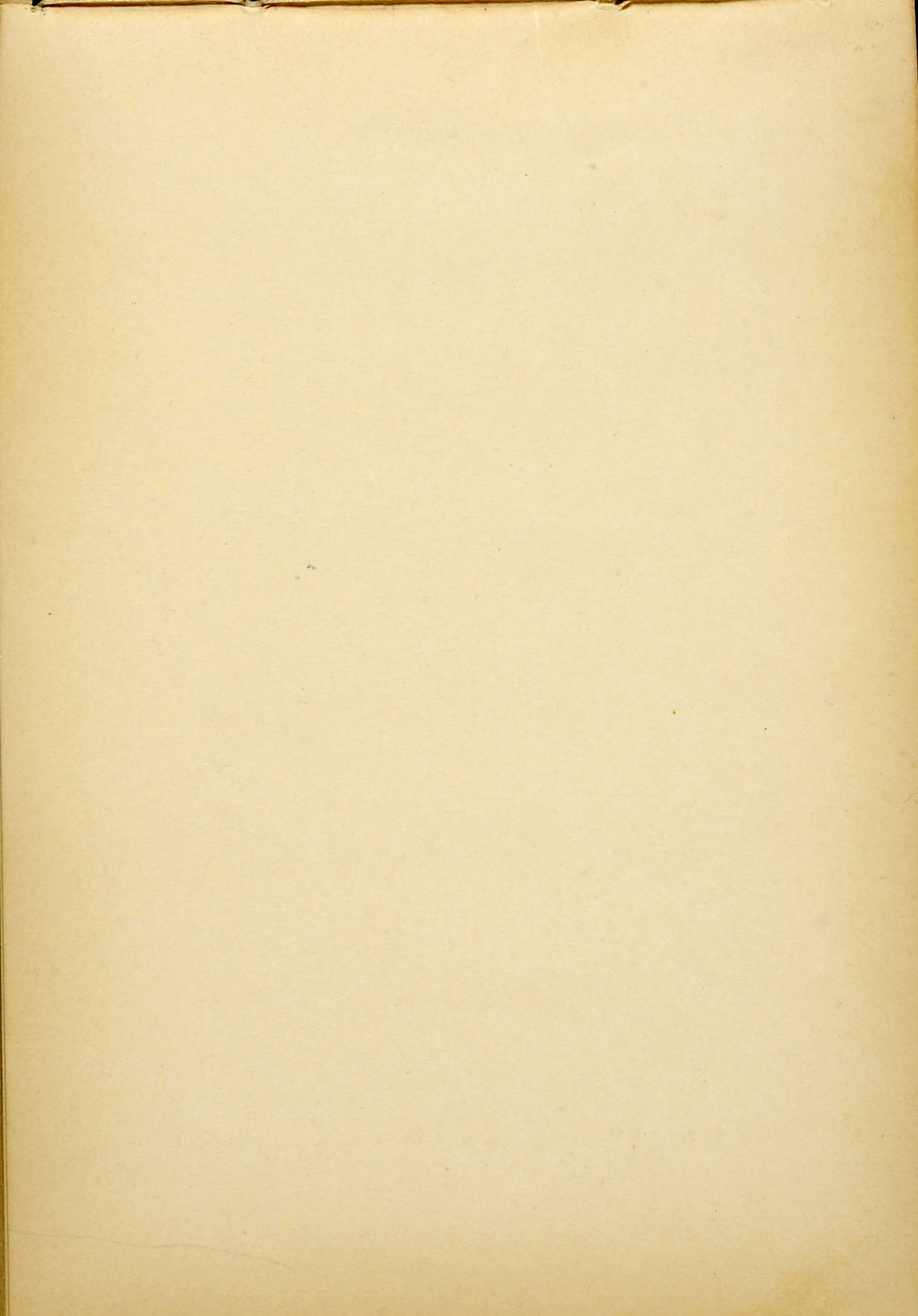
LVII

284

Happel. W. G. B.

many, uniserial.

one, flagellate form (or 5)



L VIII

Henry Fisher W. 7. 63 11. Chills six weeks

ago. then stopped. now daily chill for a week

Blood taken during paroxysm. (hot stage)

Is not anemic. No enl. of spleen



large nucleated red blood corpuscle.
colored stroma very distinct



Central pigment. 15-20 round bodies evident
in pale sheath.

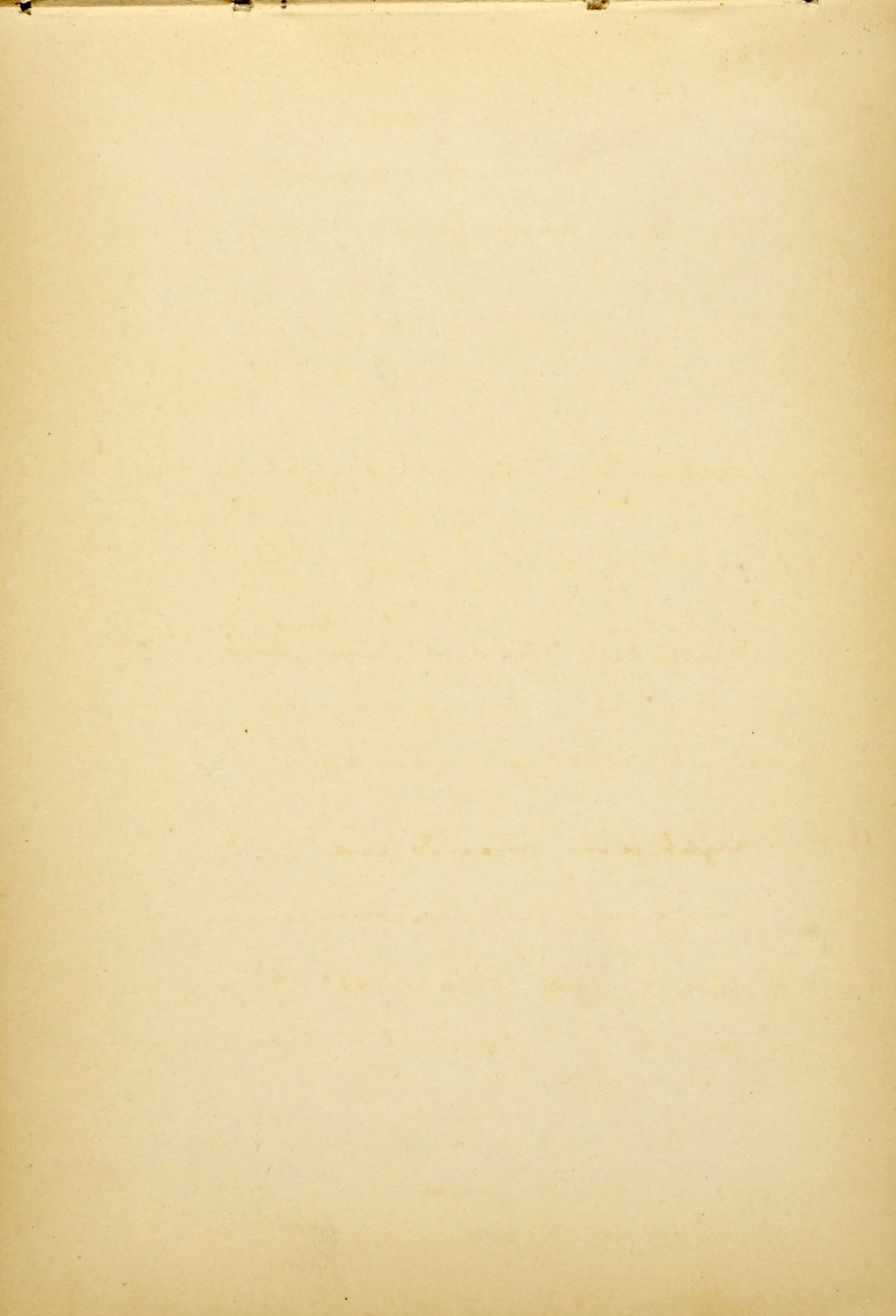
a second view of the same



The bodies surround the pigment very closely
in this view

five or six of these bodies seen. no pigment
over. one hyaline in red.
a second slide was negative

It has been taken 2. steadily. none in
blood of any sort.



[=LIX]

11/1/86 [=1 Nov. 1886]

Case LVXXX

W. 7. Used. This element

all 3 weeks. In a year ago. A month ago
no chills but ~~was~~ fever. many cog day

many crescents. They alter diet with in outline

11/4/ many still some other

11/7/ Yesterday. T. went ^{has some up} ~~up about~~ ^{stomach}
was 103° at 7. each day
Crescents still very abundant

11/8 aight fever towards eve . .
many crescent . no other forms

11/11 Fevering eve + 102. 103°. Says he does not
feel febrile. Crescents still no other forms

11/19. This been even. nearly to normal Has been
taking thallin and arsenic in v.l.c.d
Crescents still present

A well marked example of the flagellate form
very active - half the size of a red corpuscle. Moves the
neighboring red cells to one side. They not moved much
but it allens distinctly in outline. The movements
of the flagella are so active that it is scarcely
possible to see them very flexible. It moved for
about 15" and then stopped.

many crescents as well

22. red. many crescents -

Dec. 9. still present not nearly so numerous. Has
had no chills

OSLER MS. 7666, w:
Malaria notes at Blockley.
Verso of leaf 15.
Continuation, 19 Nov.-9 Dec.,
1886, of Case "LVIX" (LIX,
59), describing flagella,
sketched in pencil now
scarcely visible.
Osler Library, 1940

[LX]

Quarantine

5/F

[Nov. 1886]

L 10X

Ward 7.

has ward. Last attack 3 weeks had been
since. not regular about 20 in all. Has had m. m.
to appear last July.

Friday.

Many bodies in red corpuscles.

~~Monday~~ Sunday 7th. Fever yesterday (Saturday)

still all in red corpuscles not abundant.
no other forms.

8th. no fever today. Feels as if he would have
no tumours. have seen. careful search

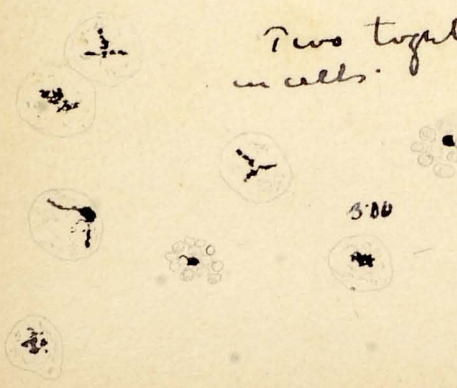
9th. In fever at 2.30 began at 11. not a heavy
chill. Copious urticaria.
Many extracellular forms

Two together. many of these. - free not
in cells.

- one segmenting

3.20. no essential change

11.10. 100



Had a chill at 4.40.

10th . No free bodies . ~~no~~ all intracellular
 form . tot . numerous . no segmentation
 No fever body

" / " / Better to day . Says he will have another tumor
 no fever .



Small clear crescent-space as if a
 absolutely none except the circular forms with
 irregularly distributed pigment.



11 / 12 / 86 . . at 12 . only 99 . Says he feels little as
 tho a chill would come on

Slide at 8 am



distinct colorless parasites in them

Good many in field

slightly pigmented colorless corpus

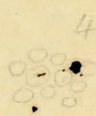
Slide at 12 . Pigment is central in many . In others still distin

hated .



12.45

210 has segmented



4 Pm

2.30 Many in decolor . only one in
 this one . segmented .

3.30 1 very few all in segmentation

10th. No free bodies. ~~no~~ all intracellular
 form. tot. numerous. no segmentation
 No fever body

11/11/ Better to day. Says he will have another tumor
 no fever.



Small clear crescent-space as if a
 absolutely none except the circular forms with
 irregularly distributed pigment.



11/12/86. . at 12 π . only 99. Says he feels little as
 tho a chill would come on

Slide at 8 am



distinct colorless parasites in them

Good many in field

slightly pigmented colorless corpus

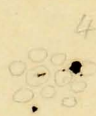
Slide at 12. Pigment is central in many. In others still disinte-

rated.



12.45

210 has segmented



4 P.M.

2.30 Many in decolor. only one in
 this one. segmented.

3.30 1 very few all in segmentation

LXI John Davis W 1 222

11/7/82

In about 5 weeks outwards for 2 weeks.
Luncheon. Has had M. since July in the
m & fever in a. Is very pale & thin.
Chill this am. very bad. as in few in
Crescents most abundant. no other form

11/8/ Blood just in chill T. 98.

Crescents only.



a crescent with the pigment very
much towards the one end.



a crescent with
the pigment very
much distributed

Blood in fever.

round form



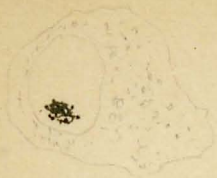
like a little spindle attached to

many crescents.

13th. no chill for 4 days. 2. 20 sps in day

very pale. still many crescents - very abundant

18th Still abundant. only crescents



colorless capsule. The clear body ^{is} well
at first was ~~entirely~~ curved. I thought
to be an ungerminated crescent probably not.

22. Still crescent in numbers. In taking Linnæ

9/12/86. No 2. for nearly two weeks. I had a chill
on Monday 6th. Chill last night at 4.30 am.
3/4 hour in chill: hot. & then revealed.

Blood contains very few crescents. No acute intra-
cellular bodies.

L. Schemmer . Small. wand. 3. 15 4

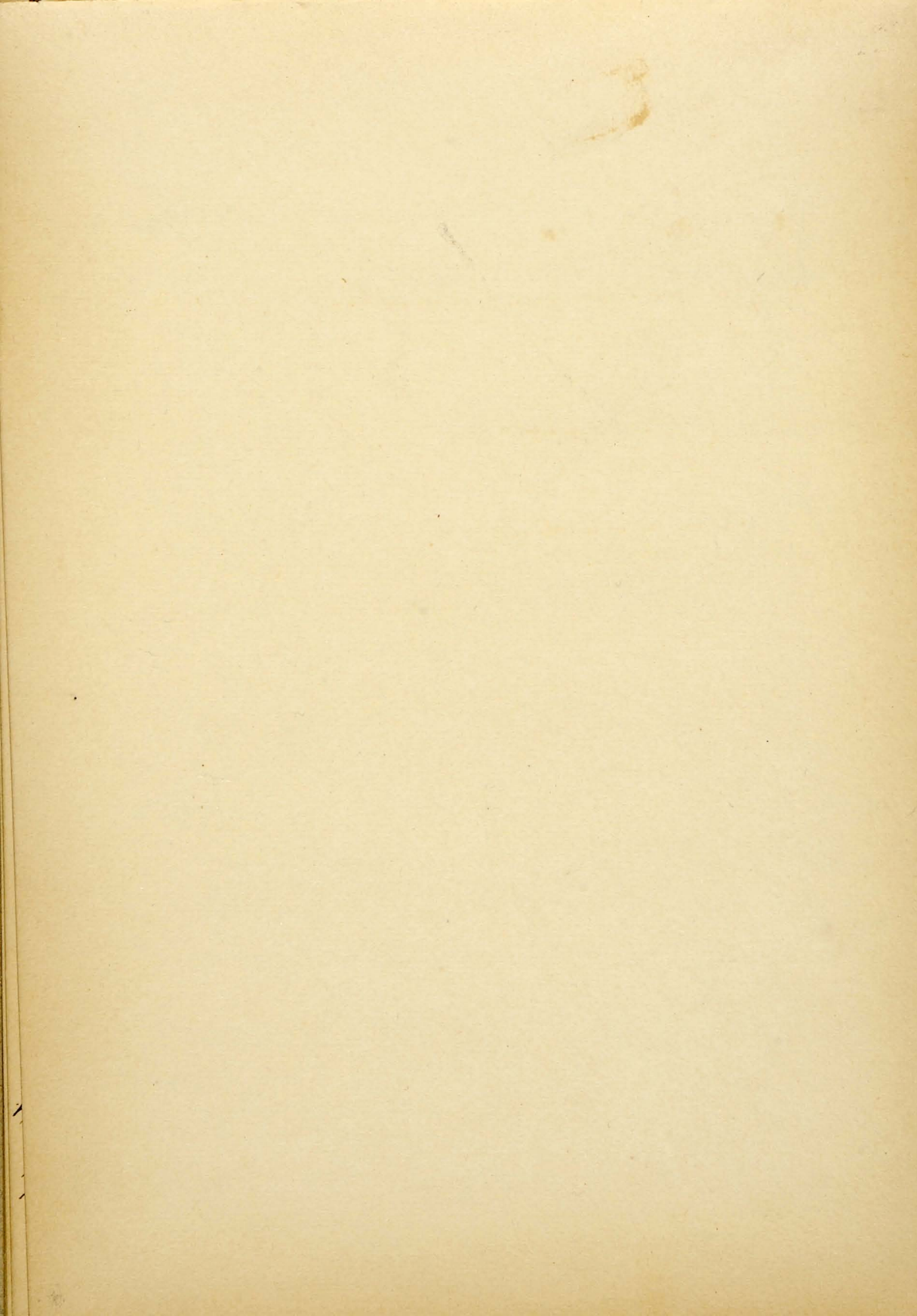
chill in 1st day of admission . irregular
chills & fever since . Had been drinking, looks
as if he had .

none found in one slide

11/11/ none in one slide

Leptococcus

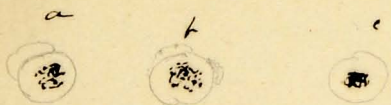




Case LXII . Ward. 3. 6. 16.

11/12/86

Dr. Murren.



changes in one . at a.

looks as if a narrow rim. was adhes. at (b) this was
slight. gone. & a prism. at

13th . only two seen -


15th . none seen in one shell


in Case LXI + LXII both performed under a microscope
but often illustrate probably an effect of char. mat.
in which the active part

Case L. 17 continued

Chas Ward.

13th. Day after chills. . very few in two slides

all intracellular in form  with out any rim
of stroma about them

 2 small ones in a red

15th In chills paroxysm. # 98.

very few bodies in oo none respiratory
subsequently T. 10. bodies res.

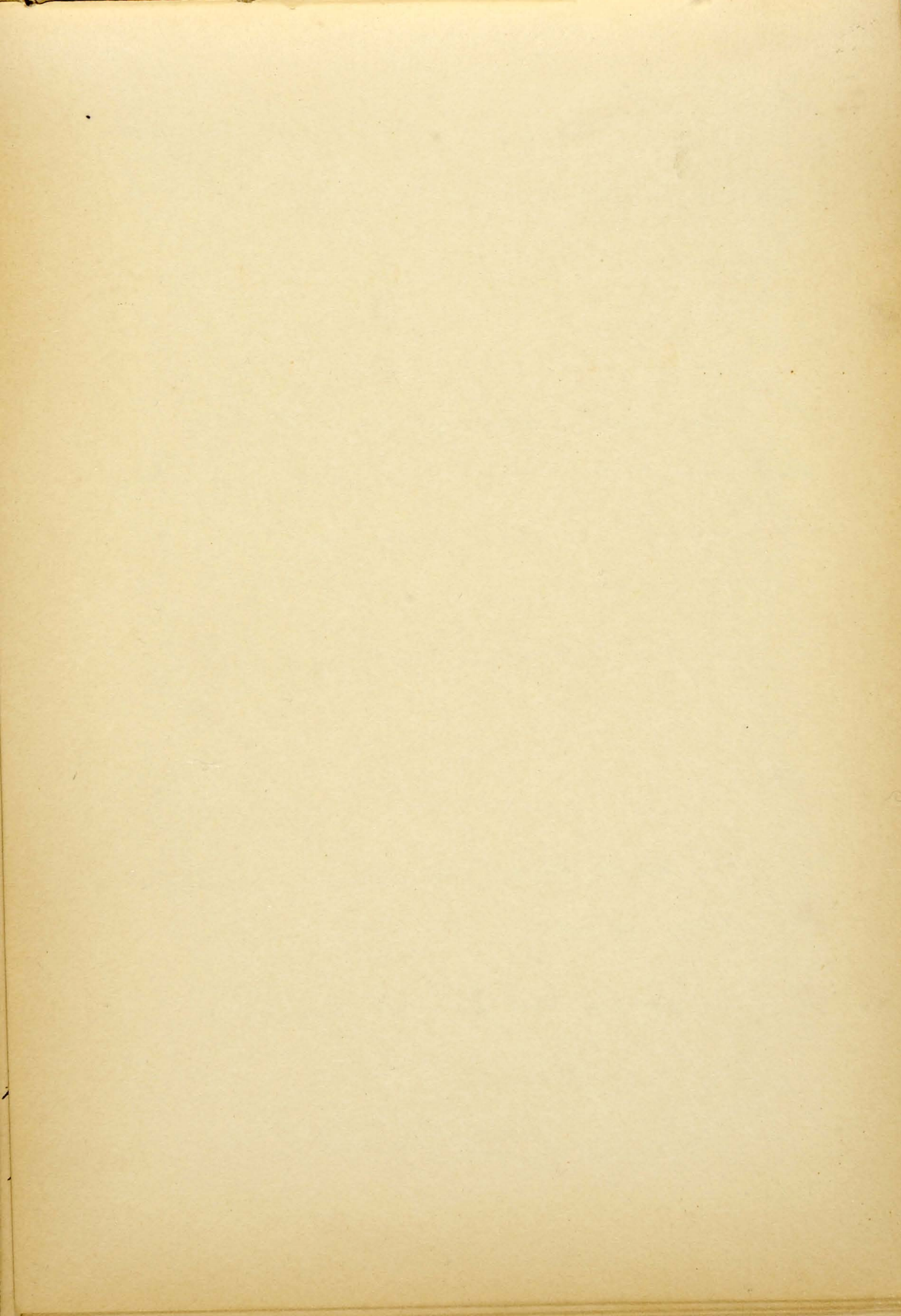
18th In paroxysm T 104.55



22nd. Has had Fever. Pneumonia since. 18th

Still bodies in cells.

Dec 9. since #8 has had 2. no bodies



11/12/86

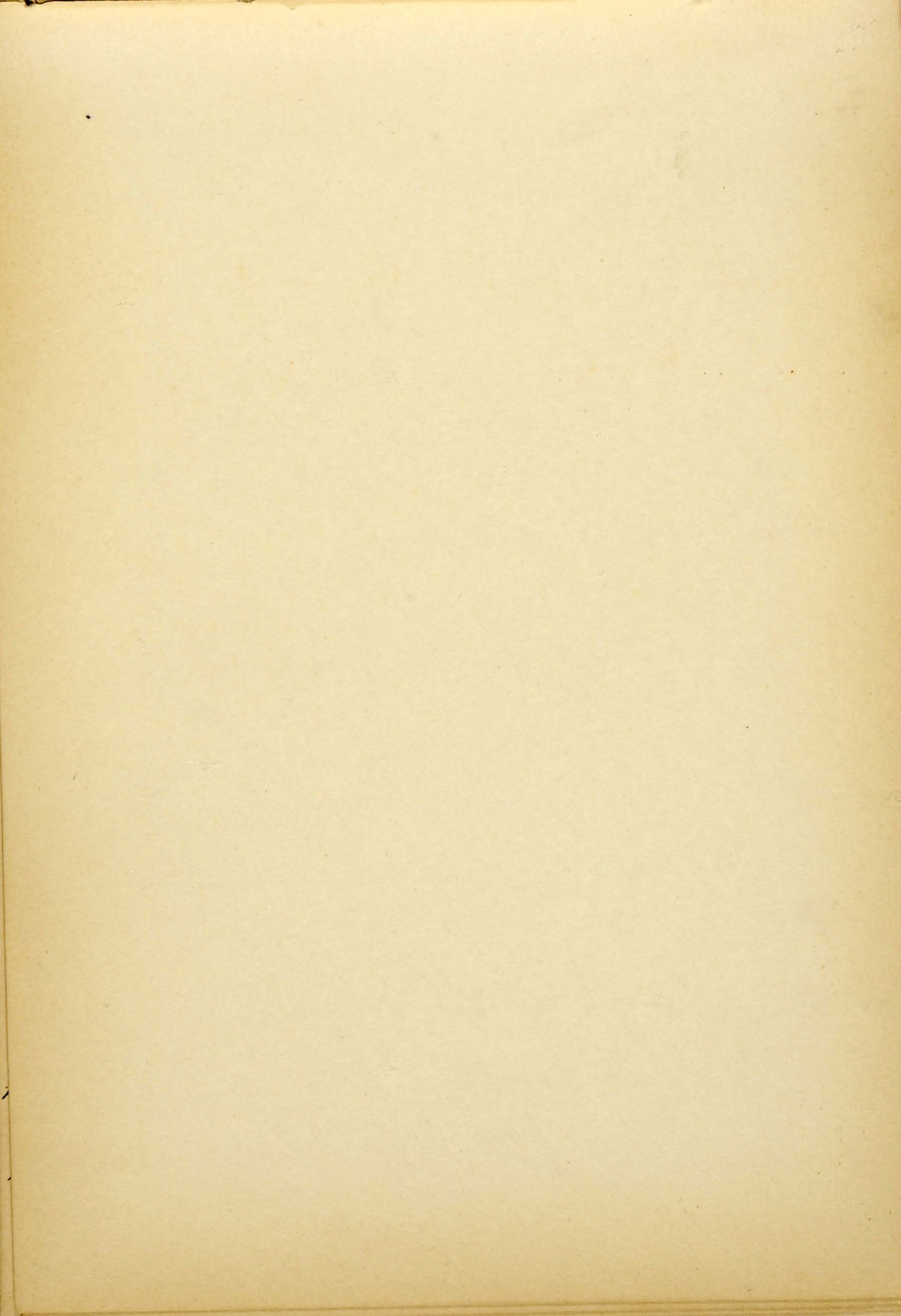
Case LXIII

around Note W 3 to 15.

All 10 weeks.

Crescents, very few. Pigment in col. 00

15th. Negative



11/15/86

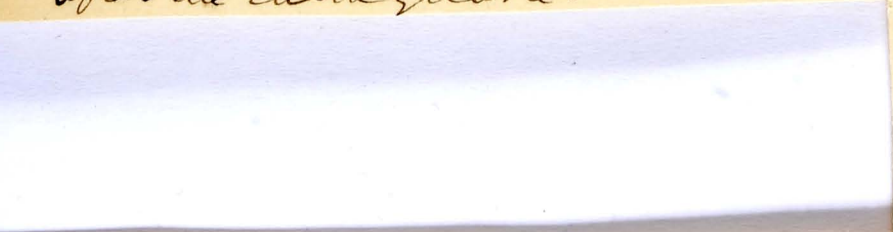
Ward 3 b. 9

negative

18th.

Case L X 1M. Max Kluge. W. 9.

From South Carolina, six weeks. one week after the earthquake.



colored capsule which at 2.30 moved more than its own length and gradually took in one of the free segmented bodies. In a short time the little capsule was also included.

Intracellular forms abundant.

22 and nine seen. He had one day of Dr. 2080 after admission same seen.

Case L X N^o . John - Reagon

chill a week ago Monday. 8th & one every
other day since. Working in Delaware. Offert
attack.

Intracellular bodies abundant.

19th

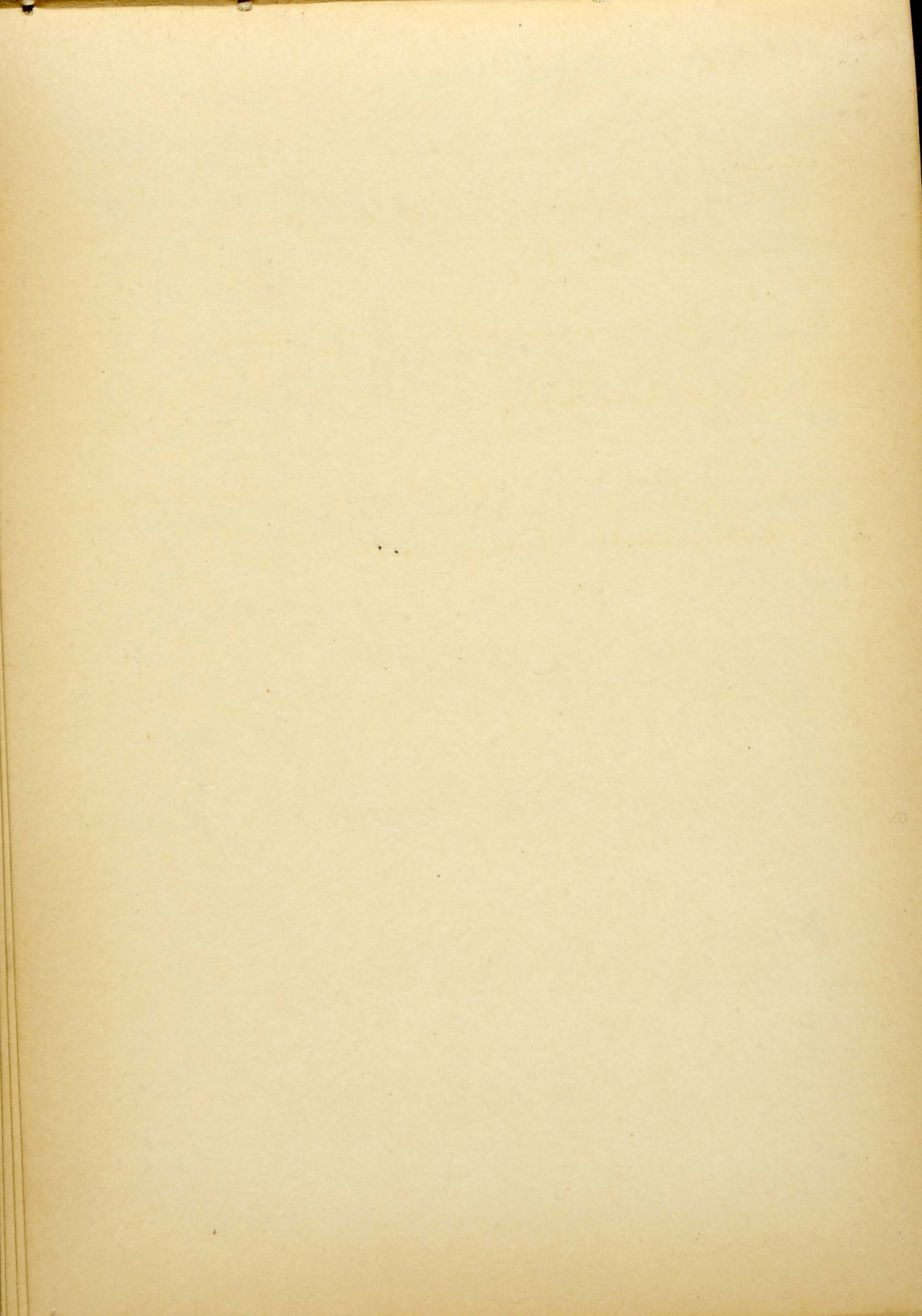
T. 108. Blood. contained many.

4 hours after not nearly so many

22nd chill yesterday. Intracellular abundant



27th very few not in shell. Has several
shells.



Case LXVI

Thomas Fleming. All for 6 mos. chills
and some.

in 2 off - Isancum - spleen enlarged
chill lately every other day.

26th. a few intercell. ; off day.

27th. Mild chill today. none found. T 101.

Dec 9. U. a few intercellul. for. Has had no

2. Had a chill today with

11 U.

LXVII

Michael Malony. Ward 7. B 9

Dec 9

Dec. 9. He had a chill today - at 10.30 - fever 103. sweated

very many crescents - 3 or 4 in a field.

Oct 10.

Howard Kellan. 4 Birch Place.

chill in Sept at West. Peterson - about August

Had about 13 chills. Last one 27th Sept. Has
taken herbs - not given.

Is anxious
then (11) nucleated red corp.

2. many (?) small solid bodies in vacuoles.

no regular pigment granules. no encysted

Dec 9 11

LXVIII

John Mc Neal W. G. B.

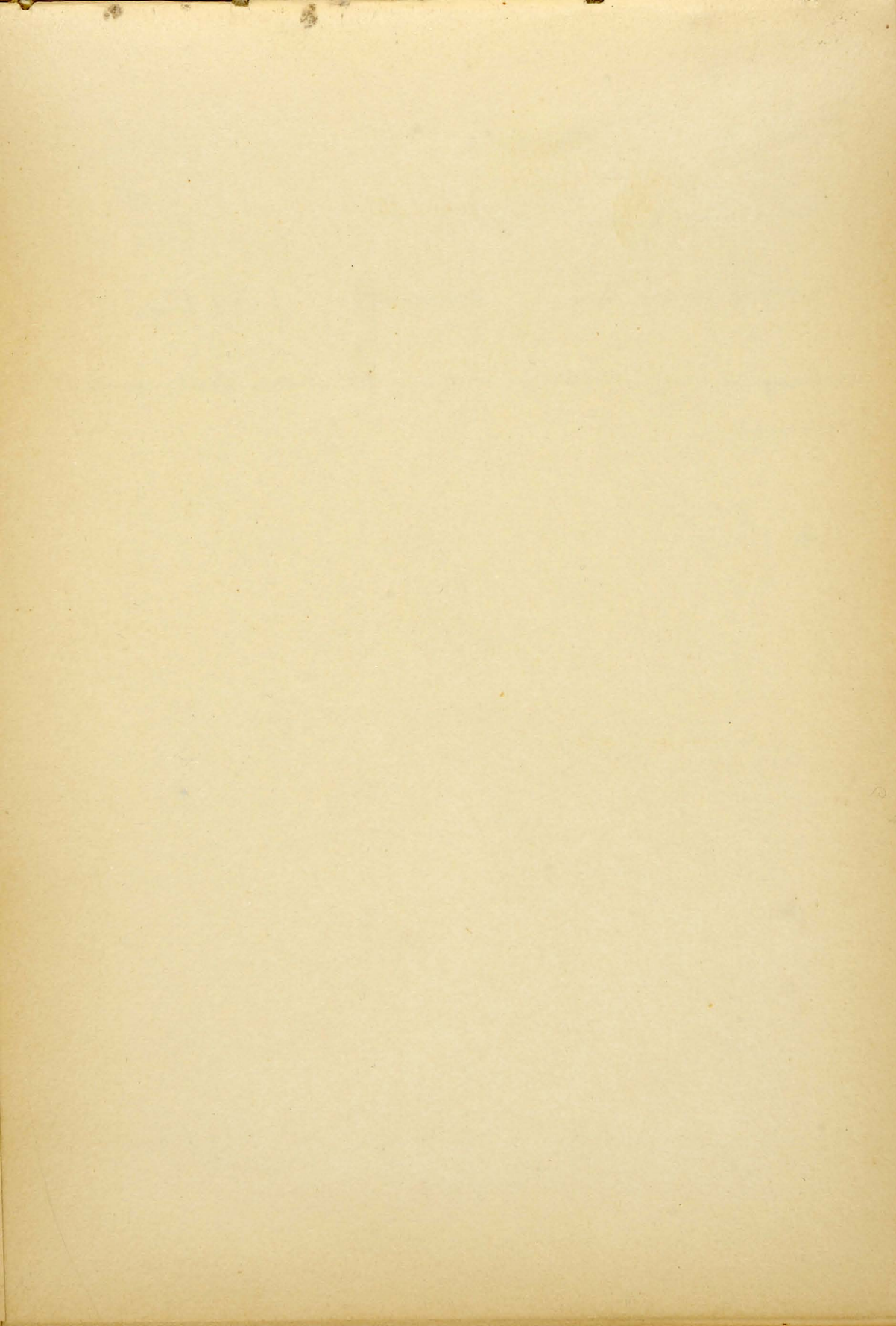
Malaria since Sept.

one every day since secondary. One today.

Many in red capsules. Many free round forms.



So many of these little ones & other larger ones like
them - several together.



LXIX.

note in other book.

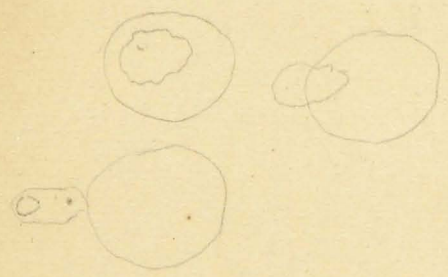
Tarkenton.

hullmouth

LX. Dr. Murren. case.

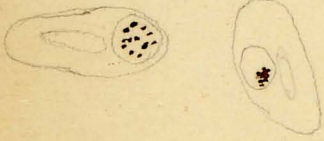
10/1/22

John Devine

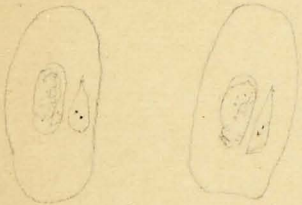


22nd Aug

Notes for Dr. McCallum of Dunville.



11.10



a clear space with two small pos. bodies just
to the right of the nucleus.



with 2 refractile bodies in a vacuole.



5/11/87

Case XI.

Pat of Dr Wilson. Ch. malaria.
chills, anæmia.

Many ultracell. bodies. a few full ones.

May 21st

25

Case 118. Tim Stanton W. 7. Chills last sept. came
in for them. Chills again at times. None till
3 weeks ago. Chills now on 30th and this
morning at 6.30.

Very few intra-ocular. Good many fine small ones and
a few in very pale form. Has had Lumen



2/13 3, 23 4/12

9/12

Does not seem there had a thorough
examination

Case X.

Miss. - from Dr. Stewart.

May 4th. Apr

Case VIII W. McK. W 3

1st chill 4 weeks ago in Bellona

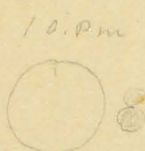
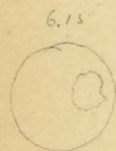
Friday + morn of last week.

Chill for 3 days now. Very many bodies

almost all intracellular

Tuesday May 1st. Had a chill at 8. severe. Seen at 4.30. No fever.

Blood contained very few intracellular pigmented forms. a good many corpuscles had the hyaline bodies previous forms. The form at 6.15 appeared at 10 PM have



passed out as no sugars within a 2 small bodies - solid looking were intride. Several ovoid solid bodies seen - free - at 10.

2. v gm at 11. 2 other done

2nd 25 gm chs an

Blood at 4 negative

4th - still negative.

Case VI. ..

Univ. Hospital

Case VII .W. 3.. man . chills p -

Many intracellular.

Case VIII

malanacures
Second Series 1887.

Case I. Lad aged. 18. Quotidian + Tert. Ca. 1
5-4 weeks.

Intracellular forms, very numerous.

Rapidly disappear with Quin

D. Ormen

Case II. J.S. 30. From Paranaia, Aracua.

Spleen enlarged. Still occa. chill. Had
what call shagren fever.

Many intracell. & free. no crescents

Case III. S. +. at 38. From Paranaia (D. Ormen)

Shagren fever. Slight ent. spleen. Aracua
Many intracellular forms.

Disap under Quin.

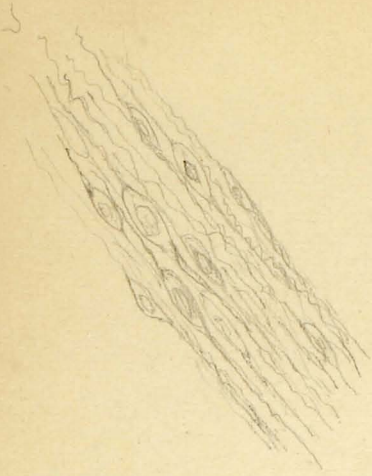
Case IV. W. 6. man. Tertian 3 weeks.

abundant intracellular.

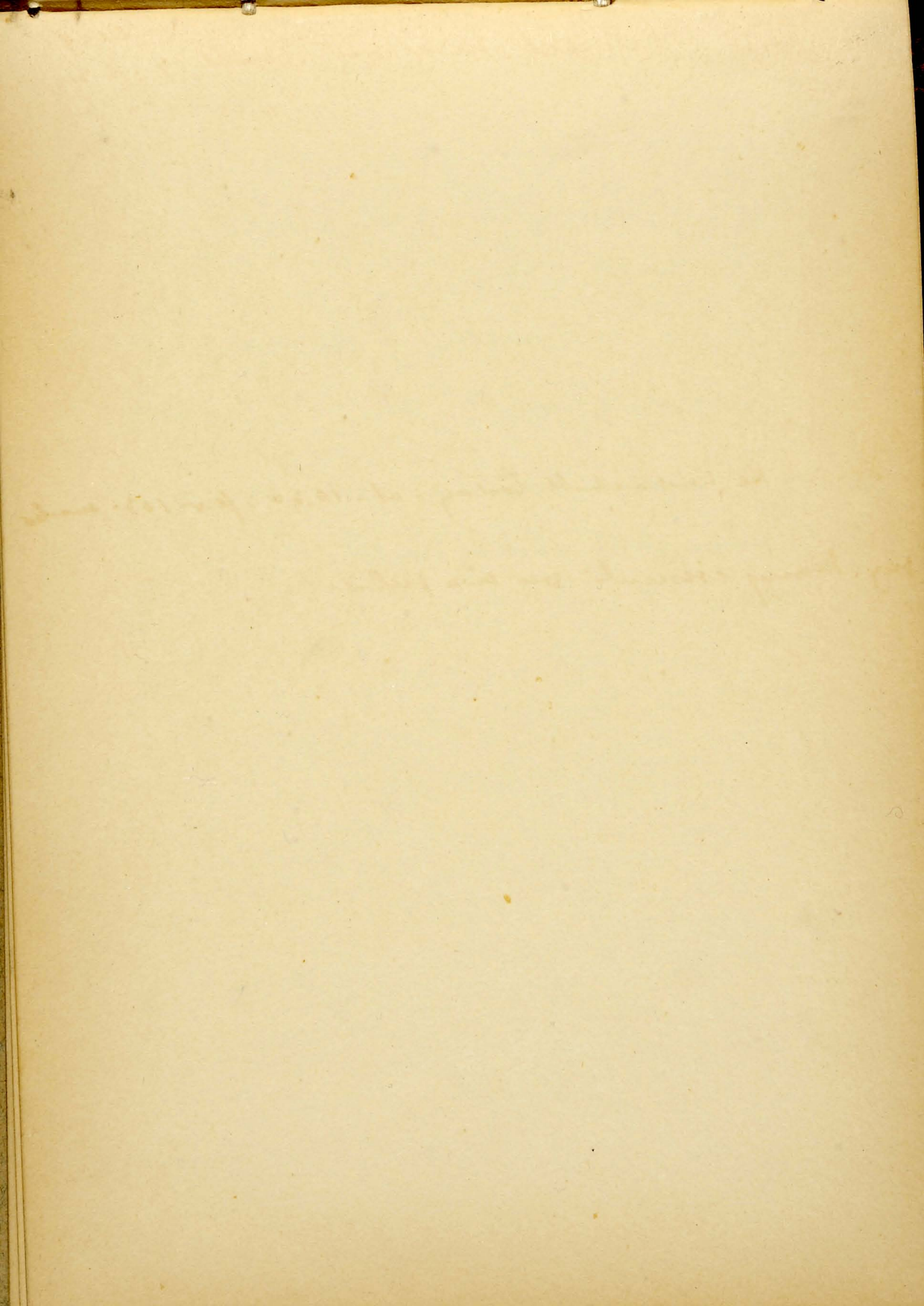
Quin. disap.

Case V. W. 9. John Lewis. Men 84-85. ^{18/2/87} ~~18/2/87~~

been nearly a year in Hospital. 3 weeks ago
1st chill in river, at first tert. now daily. Chill
for 5 days. Chill at 4 am. Blood at 2.50 Pm. negative
Subsequently found. and l. disap.



Sub-cutaneous fibroid nodule in acute chronic
Rheumatism. case of - W. H. 12/15/86



3847

Osler MS. 7666,w: Malaria notes at Blockley,
"Goose fr. Dr MacCallum", 22 Aug., [1886]
Leaf 28 verso. Osler Library, 1940.

7666. w. leaf 15 (front)

Will also do for leaf 16 (front).

Take also back of leaf 15

with attached typing.

