

BOILER CONTRACT N° 873 & 4.

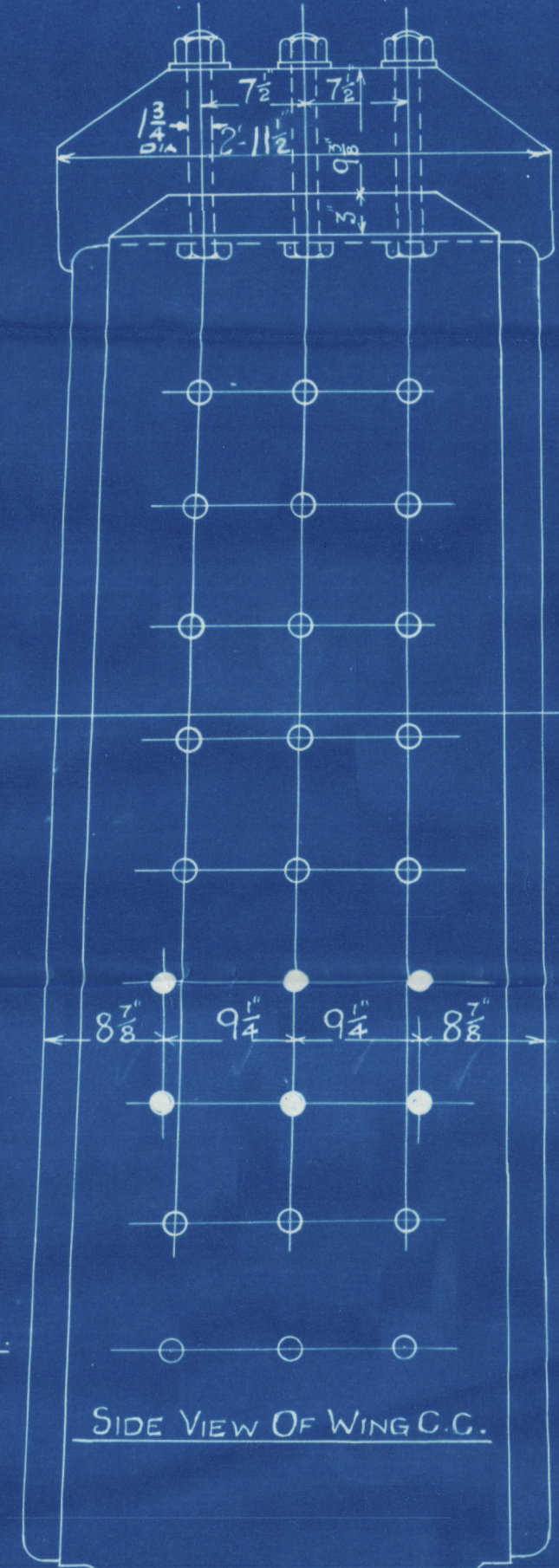
MESSRS SIR W.G. ARMSTRONG WHITWORTH SHIP N° 1025-6
 TO BE CONSTRUCTED TO PASS LLOYD'S REQUIREMENTS.
 2 OFF FOR EACH CONTRACT. SCALE 1" = 1'-0"

14/12/1926

HEATING SURFACE.

| | |
|---------------------|------------|
| TUBES | 2277 # |
| FURNACES | 183 # |
| COMBUSTION CHAMBERS | 254 # |
| BACK TUBE PLATE | 55 # |
| FRONT TUBE PLATE | 43 # |
| TOTAL ONE BOILER = | 2812 # |
| TOTAL TWO BOILERS = | 5624 # |
| WORKING PRESSURE | 200 LBS/SQ |
| TEST PRESSURE | 350 LBS/SQ |

BOILERS TO WORK WITH HOWDEN'S FORCED DRAUGHT AND TO BURN OIL FUEL.



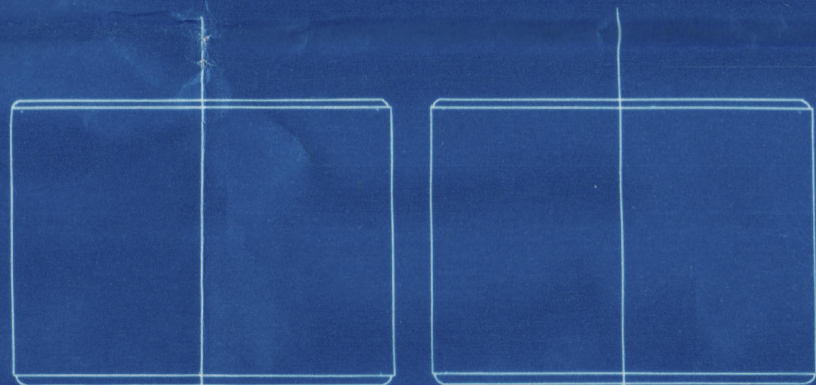
PLAN OF SHELL RIVETING.
 STRENGTH OF JOINT.
 PLATE 85.1%
 RIVET 85.75%

SHELL HYDRAULIC RIVETED WHEREVER PRACTICABLE.
 ALL HOLES DRILLED IN PLACE AFTER BENDING.
 CIRCUMFERENTIAL SEAMS DOUBLE RIVETED 1 1/8" DIA HOLES.
 152 PITCHES OF 3 9/4" MEASURED ON MEAN CIRCUMFERENCE.

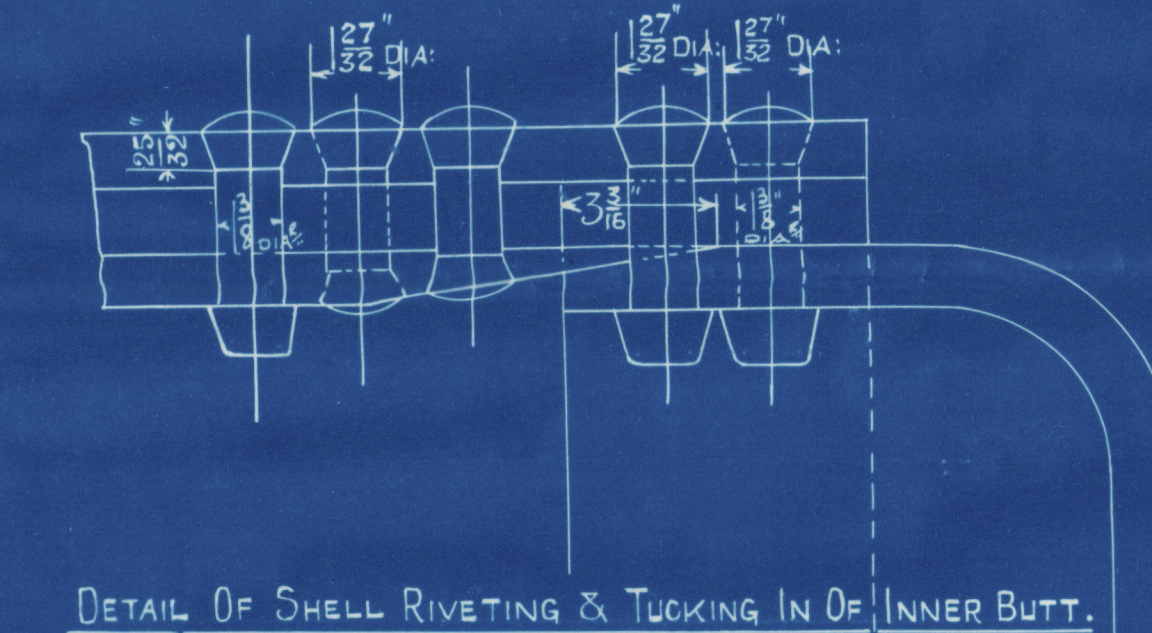
MATERIALS.

| DESCRIPTION | TENSILE STRENGTH | MATERIAL |
|------------------------------------|------------------|----------|
| SHELL PLATES & BUTT STRAPS. | 30 - 34 TONS D' | STEEL |
| C.C. GIRDER PLATES. | 28 - 32 " D' | " |
| LONGITUDINAL STAYS. | 28 - 32 " D' | " |
| FURNACES WRAPPER & FLANGED PLATES. | 26 - 30 " D' | " |
| RIVET BARS. | 26 - 30 " D' | " |
| C.C. SCREWED STAYS. | 26 - 30 " D' | " |
| TUBES. | | IRON |

SPARE GEAR.
 6 PLAIN BOILER TUBES
 1 STAY TUBE 1/2" THICK.



16 x 12 MANHOLE FITTED WITH CORRUGATED TYPE DOOR DOUBLING RIVETED TO SHELL BY 44 RIVETS 1 1/8" DIA HOLES.



17/12/26



WALLSEND SLIPWAY Co

Nos 843 + 844.

ARMSTRONG W 1025-6

MAIN BOILERS.

2 OFF.

W.P. 200 LBS.

S. S. British Endeavour.

NEWCASTLE ON TYNE.

Report No. 81948.

S. S. BRITISH PROGRESS

NEWCASTLE ON TYNE

Report No. 82006.

LR

© 2019

Lloyd's Register
Foundation

W234-0070