

ESTIMATED PERSONNEL NEEDS FOR FIELD SERVICE
FOR REGULAR FUNCTIONS
FISCAL YEAR 1947

	<u>POLITICAL</u>		<u>ECONOMIC & COMMERCIAL</u>		<u>CONSULAR</u>		<u>ADMINISTRATIVE</u>
	<u>Officers</u>	<u>Clerks</u>	<u>Officers</u>	<u>Clerks</u>	<u>Officers</u>	<u>Clerks</u>	<u>Officers</u>
<u>EUROPE</u> (Continued)							
<u>HUNGARY</u> (continued)							
Budapest	1.70	1.70	4.80	9.60	4.0	10.0	4.0
<u>ICELAND</u>	.60	.60	2.10	4.20	1.50	1.50	1.0
Reykjavik							
<u>ITALY</u>	10.7	10.7	15.70	31.40	31.0	63.0	18.0
Rome	6.90	6.90	7.30	14.60	5.0	10.0	7.0
Naples	.30	.30	.60	1.20	8.0	16.0	4.0
Milan	1.0	1.0	3.30	6.60	3.0	6.0	1.0
Genoa	.30	.30	1.10	2.20	4.0	8.0	1.0
Palermo	.80	.80	.70	1.40	3.0	7.0	1.0
Florence	.30	.30	.70	1.40	3.0	6.0	1.0
Trieste	.80	.80	.70	1.40	2.0	4.0	1.0
Turin	.30	.30	.70	1.40	2.0	4.0	1.0
Venice			.60	1.20	1.0	2.0	1.0
Vatican City	(All estimates are included in Rome.)						
<u>LUXEMBOURG</u>	.40	.40	2.40	4.80	.10		1.0
Luxembourg	.40	.40	2.40	4.80	.10		1.0
<u>NETHERLANDS</u>	4.5	4.5	9.95	19.90	10.0	20.0	12.0
The Hague	4.0	4.0	6.45	12.90	1.0	2.0	4.0
Amsterdam	.30	.30	2.0	4.0	4.0	8.0	4.0
Rotterdam	.20	.20	1.50	3.0	5.0	10.0	4.0

ESTIMATED PERSONNEL NEEDS FOR FIELD SERVICE
FOR REGULAR FUNCTIONS
FISCAL YEAR 1947

FISCAL Years	ECONOMIC & COMMERCIAL		CONSULAR		ADMINISTRATIVE		TOTAL		
	Clerks	Officers	Clerks	Officers	Clerks	Officers	Clerks	Officers	
.70	1.70	4.80	9.60	4.0	10.0	4.0	9.0	14.50	30.30
.60	.60	2.10	4.20	1.50	1.50	1.0	2.0	5.20	8.30
.7	10.7	15.70	31.40	31.0	63.0	18.0	36.0	75.40	141.10
.90	6.90	7.30	14.60	5.0	10.0	7.0	18.0	26.20	49.50
.30	.30	.60	1.20	8.0	16.0	4.0	7.0	12.90	24.50
.0	1.0	3.30	6.60	3.0	6.0	1.0	1.0	8.30	14.60
.30	.30	1.10	2.20	4.0	8.0	1.0	1.0	6.40	11.50
.80	.80	.70	1.40	3.0	7.0	1.0	2.0	5.50	11.20
.30	.30	.70	1.40	3.0	6.0	1.0	3.0	5.0	10.70
.80	.80	.70	1.40	2.0	4.0	1.0	1.0	4.50	7.20
.30	.30	.70	1.40	2.0	4.0	1.0	1.0	4.0	6.70
		.60	1.20	1.0	2.0	1.0	1.0	2.60	4.20
							1.0		1.0
estimates are included in Rome.)									
.40	.40	2.40	4.80	.10		1.0	2.0	3.90	7.20
.40	.40	2.40	4.80	.10		1.0	2.0	3.90	7.20
.5	4.5	9.95	19.90	10.0	20.0	12.0	7.0	36.45	51.40
.0	4.0	6.45	12.90	1.0	2.0	4.0	3.0	15.45	21.90
.30	.30	2.0	4.0	4.0	8.0	4.0	2.0	10.30	14.30
.20	.20	1.50	3.0	5.0	10.0	4.0	2.0	10.70	15.20

ESTIMATED PERSONNEL NEEDS FOR FIELD SERVICE
FOR REGULAR FUNCTIONS
FISCAL YEAR 1947

	<u>POLITICAL</u>		<u>ECONOMIC & COMMERCIAL</u>		<u>CONSULAR</u>		<u>ADMINISTRATIVE</u>	
	<u>Officers</u>	<u>Clerks</u>	<u>Officers</u>	<u>Clerks</u>	<u>Officers</u>	<u>Clerks</u>	<u>Officers</u>	<u>Clerks</u>
<u>EUROPE (Continued)</u>								
<u>NETHERLANDS</u>								
<u>POSSESSIONS</u>	3.70	3.70	8.85	17.70	6.50	9.0	1.0	
Batavia	2.0	2.0	5.60	11.20	1.50	3.0	1.0	
Balikpapan	.20	.20			.50			
Curacao	.20	.20	.50	1.0	1.20	2.40		
Aruba	.10	.10			.50			
Macassar	.20	.20						
Medan	.20	.20	1.10	2.20	.50	1.0		
Palembang	.20	.20			.50			
Paramaribo	.40	.40	.60	1.20	.80	.60		
Surubaya	.20	.20	1.05	2.10	1.0	2.0		
<u>NORWAY</u>	3.0	3.0	5.85	11.70	7.0	14.0	4.0	
Oslo	2.40	2.40	5.70	11.40	4.0	8.0	4.0	
Bergen	.40	.40	.05	.10	1.0	2.0		
Stavanger	.20	.20	.05	.10	1.0	2.0		
Trondhjem			.05	.10	1.0	2.0		
<u>POLAND</u>	6.3	6.3	6.30	12.60	14.0	30.0	4.0	
Warsaw	3.50	3.50	6.25	12.50	14.0	30.0	4.0	
Gdynia	.70	.70						
Poznan	.70	.70						
Danzig			.05	.10				
Cracow	.70	.70						
Lodz	.70	.70						

ESTIMATED PERSONNEL NEEDS FOR FIELD SERVICE
FOR REGULAR FUNCTIONS
FISCAL YEAR 1947

<u>POLITICAL</u>		<u>ECONOMIC & COMMERCIAL</u>		<u>CONSULAR</u>		<u>ADMINISTRATIVE</u>		<u>TOTAL</u>	
<u>Officers</u>	<u>Clerks</u>	<u>Officers</u>	<u>Clerks</u>	<u>Officers</u>	<u>Clerks</u>	<u>Officers</u>	<u>Clerks</u>	<u>Officers</u>	<u>Clerks</u>
.70	3.70	8.85	17.70	6.50	9.0	1.0	8.0	20.05	38.40
.0	2.0	5.60	11.20	1.50	3.0	1.0	1.0	10.10	17.20
.20	.20			.50			1.0	.70	1.20
.20	.20	.50	1.0	1.20	2.40		1.0	1.90	4.60
.10	.10			.50				.60	.10
.20	.20						1.0	.20	1.20
.20	.20	1.10	2.20	.50	1.0		1.0	1.80	4.40
.20	.20			.50			1.0	.70	1.20
.40	.40	.60	1.20	.80	.60		1.0	1.80	3.20
.20	.20	1.05	2.10	1.0	2.0		1.0	2.25	5.30
3.0	3.0	5.85	11.70	7.0	14.0	4.0	4.0	19.85	32.70
2.40	2.40	5.70	11.40	4.0	8.0	4.0	1.0	16.10	22.80
.40	.40	.05	.10	1.0	2.0		1.0	1.45	3.50
.20	.20	.05	.10	1.0	2.0		1.0	1.25	3.30
		.05	.10	1.0	2.0		1.0	1.05	3.10
6.3	6.3	6.30	12.60	14.0	30.0	4.0	1.0	30.60	49.90
3.50	3.50	6.25	12.50	14.0	30.0	4.0	1.0	27.75	47.0
.70	.70							.70	.70
.70	.70							.70	.70
		.05	.10					.05	.10
.70	.70							.70	.70
.70	.70							.70	.70

ESTIMATED PERSONNEL NEEDS FOR FIELD SERVICE
FOR REGULAR FUNCTIONS
FISCAL YEAR 1947

	<u>POLITICAL</u>		<u>ECONOMIC & COMMERCIAL</u>		<u>CONSULAR</u>		<u>ADMINISTRATIVE</u>
	<u>Officers</u>	<u>Clerks</u>	<u>Officers</u>	<u>Clerks</u>	<u>Officers</u>	<u>Clerks</u>	<u>Officers</u>
<u>EUROPE (CONTINUED)</u>							
<u>PORTUGAL</u>	5.5	5.5	6.80	13.60	5.50	14.00	7.0
Lisbon	4.0	4.0	5.30	10.60	3.30	7.80	7.0
Angra de Hacismo	.55	.55			.30	1.20	
Funchal	.10	.10	.50	1.00	.40	1.60	
Oporto	.10	.10	1.00	2.00	.40	1.40	
Punta Delgado	.60	.60			.40	1.20	
Horta	.15	.15			.70	.80	
<u>PORTUGAL POSSESS-</u>							
<u>IONS</u>	.90	.90	1.90	3.80	.50	1.0	
Beira Mozambique	Being closed		.70	1.40			
Lourenco Marques	.80	.80	.70	1.40	.40	.80	
Luanda	.10	.10	.50	1.00	.10	.20	
<u>RUMANIA</u>	1.90	1.90	3.70	7.40	5.50	20.0	4.0
Bucharest	1.90	1.90	3.70	7.40	5.50	20.0	4.0
<u>SPAIN & POSSESSIONS</u>	12.65	12.65	10.20	20.40	10.50	15.50	14.0
Madrid	7.90	7.90	6.0	12.0	2.10	3.0	7.0
Barcelona	1.8	1.80	2.20	4.40	3.50	4.0	4.0
Bilbao	.30	.30	.45	.90	.40	1.80	1.0
Las Palmas	.30	.30	.25	.50	.10	.30	
Malaga	.50	.50	.25	.50	.40	1.0	
San Sebastian	.20	.20			.40	.50	
Seville	.40	.40	.80	1.60	.90	1.0	1.0
Tenerife	.40	.40			1.0	1.30	

ESTIMATED PERSONNEL NEEDS FOR FIELD SERVICE
FOR REGULAR FUNCTIONS
FISCAL YEAR 1947

	<u>POLITICAL</u>		<u>ECONOMIC & COMMERCIAL</u>		<u>CONSULAR</u>		<u>ADMINISTRATIVE</u>		<u>TOTAL</u>	
	Officers	Clerks	Officers	Clerks	Officers	Clerks	Officers	Clerks	Officers	Clerks
.5		5.5	6.80	13.60	5.50	14.00	7.0	23.0	24.80	56.10
.0		4.0	5.30	10.60	3.30	7.80	7.0	15.0	19.60	37.40
.55		.55			.30	1.20		1.0	.85	2.75
.10		.10	.50	1.00	.40	1.60		1.0	1.0	3.70
.10		.10	1.00	2.00	.40	1.40		2.00	1.50	5.50
.60		.60			.40	1.20		2.0	1.0	3.80
.15		.15			.70	.80		2.0	.85	2.95
.90		.90	1.90	3.80	.50	1.0		4.0	3.30	9.70
closed			.70	1.40					.70	1.40
.80		.80	.70	1.40	.40	.80		2.0	1.90	5.0
.10		.10	.50	1.00	.10	.20		2.0	.70	3.30
.90		1.90	3.70	7.40	5.50	20.0	4.0	4.0	15.10	33.30
.90		1.90	3.70	7.40	5.50	20.0	4.0	4.0	15.10	33.30
.65		12.65	10.20	20.40	10.50	15.50	14.0	39.0	47.35	87.55
.90		7.90	6.0	12.0	2.10	3.0	7.0	23.0	23.0	45.90
.8		1.80	2.20	4.40	3.50	4.0	4.0	1.0	11.50	11.20
.30		.30	.45	.90	.40	1.80	1.0	1.0	2.15	4.0
.30		.30	.25	.50	.10	.30		2.0	.65	3.10
.50		.50	.25	.50	.40	1.0		2.0	1.15	4.0
.20		.20			.40	.50		2.0	.60	2.70
.40		.40	.80	1.60	.90	1.0	1.0	1.0	3.10	4.0
.40		.40			1.0	1.30		2.0	1.40	3.70

ESTIMATED PERSONNEL NEEDS FOR FIELD SERVICE
FOR REGULAR FUNCTIONS
FISCAL YEAR 1947

	<u>POLITICAL</u>		<u>ECONOMIC & COMMERCIAL</u>		<u>CONSULAR</u>		<u>ADMINISTRATIVE</u>
	<u>Officers</u>	<u>Clerks</u>	<u>Officers</u>	<u>Clerks</u>	<u>Officers</u>	<u>Clerks</u>	<u>Officers</u>
<u>SPAIN & POSSESSIONS</u> (Continued)							
Valencia	.60	.60	.25	.50	.50	.60	
Vigo	.25	.25			1.20	2.0	1.0
<u>SWEDEN</u>	3.70	3.70	8.30	16.60	3.0	7.0	8.0
Stockholm	3.20	3.20	7.30	14.60	1.80	3.20	7.0
Gotsborg	.30	.30	.50	1.00	1.0	3.0	1.0
Malmö	.20	.20	.50	1.00	.20	.80	
<u>SWITZERLAND</u>	7.10	7.10	8.55	17.10	5.50	11.0	10.0
Bern	5.80	5.80	5.35	10.70	1.70	3.50	4.0
Basel	.50	.50	1.00	2.00	.70	2.0	1.0
Geneva	.60	.60	1.20	2.40	1.40	2.0	1.0
Zurich	.20	.20	1.00	2.00	1.70	3.50	4.0
<u>U. S. S. R.</u>	10.8	10.8	12.65	25.30	8.50	12.0	11.0
Moscow	7.8	7.80	8.00	16.00	4.0	4.0	7.0
Vladivostok	1.0	1.0	1.50	3.00	1.50	2.0	1.0
Odessa	1.0	1.0					
Leningrad	1.0	1.0					
Riga			1.05	2.10	1.0	2.0	1.0
Kaunas			1.05	2.10	1.0	2.0	1.0
Tallin			1.05	2.10	1.0	2.0	1.0
<u>YUGOSLAVIA</u>	2.5	2.5	5.00	10.00	9.0	12.0	5.0
Belgrade	2.0	2.0	4.35	8.70	6.0	8.0	4.0

ESTIMATED PERSONNEL NEEDS FOR FIELD SERVICE
FOR REGULAR FUNCTIONS
FISCAL YEAR 1947

36A

	<u>POLITICAL</u>		<u>ECONOMIC & COMMERCIAL</u>		<u>CONSULAR</u>		<u>ADMINISTRATIVE</u>		<u>TOTAL</u>	
	Officers	Clerks	Officers	Clerks	Officers	Clerks	Officers	Clerks	Officers	Clerks
.60	.60	.25	.50	.50	.50	.60	2.0	2.0	1.35	3.70
.25	.25				1.20	2.0	1.0	3.0	2.45	5.25
.70	3.70	8.30	16.60	3.0	7.0	8.0	22.0	23.0	49.30	
.20	3.20	7.30	14.60	1.80	3.20	7.0	20.0	19.30	41.0	
.30	.30	.50	1.00	1.0	3.0	1.0	1.0	2.80	5.30	
.20	.20	.50	1.00	.20	.80		1.0	.90	3.0	
.10	7.10	8.55	17.10	5.50	11.0	10.0	31.0	31.15	66.20	
.80	5.80	5.35	10.70	1.70	3.50	4.0	26.0	16.85	46.0	
.50	.50	1.00	2.00	.70	2.0	1.0	1.0	3.20	5.50	
.60	.60	1.20	2.40	1.40	2.0	1.0	2.0	4.20	7.0	
.20	.20	1.00	2.00	1.70	3.50	4.0	2.0	6.90	7.70	
.8	10.8	12.65	25.30	8.50	12.0	11.0	19.0	42.95	67.10	
.8	7.80	8.00	16.00	4.0	4.0	7.0	15.0	26.80	42.80	
.0	1.0	1.50	3.00	1.50	2.0	1.0	1.0	5.0	7.0	
.0	1.0							1.0	1.0	
.0	1.0							1.0	1.0	
		1.05	2.10	1.0	2.0	1.0	1.0	3.05	5.10	
		1.05	2.10	1.0	2.0	1.0	1.0	3.05	5.10	
		1.05	2.10	1.0	2.0	1.0	1.0	3.05	5.10	
.5	2.5	5.00	10.00	9.0	12.0	5.0	5.0	21.50	29.50	
.0	2.0	4.35	8.70	6.0	8.0	4.0	4.0	16.35	22.70	

ESTIMATED PERSONNEL NEEDS FOR FIELD SERVICE
FOR REGULAR FUNCTIONS
FISCAL YEAR 1947

	<u>POLITICAL</u>		<u>ECONOMIC & COMMERCIAL</u>		<u>CONSULAR</u>		<u>ADMINISTRATIVE</u>
	<u>Officers</u>	<u>Clerks</u>	<u>Officers</u>	<u>Clerks</u>	<u>Officers</u>	<u>Clerks</u>	<u>Officers</u>
<u>YUGOSLAVIA (cont'd)</u>							
Zagreb	.50	.50	.65	1.30	3.0	4.0	1.0
TOTAL EUROPE & EUROPEAN POSSESSIONS	151.0	151.0	208.90	417.80	238.10	505.0	176.0

ESTIMATED PERSONNEL NEEDS FOR FIELD SERVICE
FOR REGULAR FUNCTIONS
FISCAL YEAR 1947

POLITICAL Officers	ECONOMIC & COMMERCIAL		CONSULAR		ADMINISTRATIVE		TOTAL		
	Clerks	Officers	Clerks	Officers	Clerks	Officers	Clerks	Officers	Clerks
50	.50	.65	1.30	3.0	4.0	1.0	1.0	5.15	6.80
0	151.0	208.90	417.80	238.10	505.0	176.0	374.0	774.0	1447.80

ESTIMATED PERSONNEL NEEDS FOR FIELD SERVICE
FOR REGULAR FUNCTIONS
FISCAL YEAR 1947

	<u>POLITICAL</u>		<u>ECONOMIC & COMMERCIAL</u>		<u>CONSULAR</u>		<u>ADMINISTR.</u>
	<u>Officers</u>	<u>Clerks</u>	<u>Officers</u>	<u>Clerks</u>	<u>Officers</u>	<u>Clerks</u>	<u>Officers</u>
<u>AFRICA AND</u> <u>MIDDLE EAST</u>							
<u>AFGHANISTAN</u>	1.00	1.00	1.20	2.40	.10		1.0
Kabul	1.00	1.00	1.20	2.40	.10		1.0
<u>EGYPT</u>	3.90	3.90	7.30	14.60	6.50	19.00	5.0
Cairo	3.00	3.00	6.30	12.60	3.0	9.00	4.0
Alexandria	.50	.50	.50	1.0	2.50	8.0	1.0
Port Said	.20	.20	.50	1.0	.30	1.0	
Suez	.20	.20			.70	1.0	
<u>ETHIOPIA</u>	1.50	1.50	2.35	4.70	1.0	.50	1.0
Addis Ababa	1.50	1.50	2.35	4.70	1.0	.50	1.0
<u>IRAN</u>	2.50	2.50	2.85	5.70	1.50	2.0	4.0
Tehran	2.00	2.00	2.85	5.70	1.30	1.70	4.0
Tabris	.50	.50			.20	.30	
<u>IRAQ</u>	2.40	2.40	3.30	6.60	1.0	2.0	2.0
Baghdad	2.00	2.00	2.30	4.60	.40	.80	1.0
Basra	.40	.40	1.00	2.0	.60	1.20	1.0
<u>LEBANON</u>	1.30	1.30	1.30	2.60	2.50	5.50	4.0
Beirut	1.30	1.30	1.30	2.60	2.50	5.50	4.0

ESTIMATED PERSONNEL NEEDS FOR FIELD SERVICE
FOR REGULAR FUNCTIONS
FISCAL YEAR 1947

<u>POLITICAL</u>		<u>ECONOMIC & COMMERCIAL</u>		<u>CONSULAR</u>		<u>ADMINISTRATIVE</u>		<u>TOTAL</u>	
<u>Officers</u>	<u>Clerks</u>	<u>Officers</u>	<u>Clerks</u>	<u>Officers</u>	<u>Clerks</u>	<u>Officers</u>	<u>Clerks</u>	<u>Officers</u>	<u>Clerks</u>
1.00	1.00	1.20	2.40	.10		1.0		3.30	3.40
1.00	1.00	1.20	2.40	.10		1.0		3.30	3.40
3.90	3.90	7.30	14.60	6.50	19.00	5.0	24.0	22.70	61.50
3.00	3.00	6.30	12.60	3.0	9.00	4.0	19.0	16.30	43.60
.50	.50	.50	1.0	2.50	8.0	1.0	3.0	4.50	12.50
.20	.20	.50	1.0	.30	1.0		1.0	1.0	3.20
.20	.20			.70	1.0		1.0	.90	2.20
1.50	1.50	2.35	4.70	1.0	.50	1.0	1.0	5.85	7.70
1.50	1.50	2.35	4.70	1.0	.50	1.0	1.0	5.85	7.70
2.50	2.50	2.85	5.70	1.50	2.0	4.0	5.0	10.85	15.20
2.00	2.00	2.85	5.70	1.30	1.70	4.0	4.0	10.15	13.40
.50	.50			.20	.30		1.0	.70	1.80
2.40	2.40	3.30	6.60	1.0	2.0	2.0	3.0	8.70	14.0
2.00	2.00	2.30	4.60	.40	.80	1.0	2.0	5.70	9.40
.40	.40	1.00	2.0	.60	1.20	1.0	1.0	3.0	4.60
1.30	1.30	1.30	2.60	2.50	5.50	4.0	4.0	9.10	13.40
1.30	1.30	1.30	2.60	2.50	5.50	4.0	4.0	9.10	13.40

ESTIMATED PERSONNEL NEEDS FOR FIELD SERVICE
FOR REGULAR FUNCTIONS
FISCAL YEAR 1947

	<u>POLITICAL</u>		<u>ECONOMIC & COMMERCIAL</u>		<u>CONSULAR</u>		<u>ADMINISTRATIVE</u>
	<u>'Officers'</u>	<u>'Clerks'</u>	<u>'Officers'</u>	<u>'Clerks'</u>	<u>'Officers'</u>	<u>'Clerks'</u>	<u>'Officers'</u>
<u>AFRICA AND MIDDLE EAST (Cont)</u>							
<u>LIBERIA</u>	2.50	2.50	1.30	2.60	.50	1.0	1.0
Monrovia	2.50	2.50	1.30	2.60	.50	1.0	1.0
<u>PALESTINE AND TRANS JORDAN</u>	2.00	2.00	2.75	5.50	2.50	5.0	4.0
Jerusalem	2.00	2.00	2.75	5.50	2.50	5.0	4.0
<u>SAUDI ARABIA</u>	1.40	1.40	1.30	2.60	3.0	2.00	1.0
Jidda	1.00	1.00	1.30	2.60	.40	.50	1.0
Ras Tanura							
Bahren	.40	.40			.60		
Bahrein					2.0	1.50	
<u>SYRIA</u>	1.80	1.80	1.25	2.50	1.50	1.0	1.0
Damascus	1.80	1.80	1.25	2.50	1.50	1.0	1.0
<u>TURKEY</u>	4.70	4.70	7.45	14.90	3.50	6.0	8.0
Ankara	4.00	4.00	4.25	8.50	.50	.50	4.0
Adana					.10		
Istanbul	.50	.50	3.20	6.40	1.50	3.50	4.0
Iskenderun					.10		
Izmir	.20	.20			1.30	2.0	

ESTIMATED PERSONNEL NEEDS FOR FIELD SERVICE
FOR REGULAR FUNCTIONS
FISCAL YEAR 1947

<u>POLITICAL</u>		<u>ECONOMIC & COMMERCIAL</u>		<u>CONSULAR</u>		<u>ADMINISTRATIVE</u>		<u>TOTAL</u>	
<u>Officers</u>	<u>Clerks</u>	<u>Officers</u>	<u>Clerks</u>	<u>Officers</u>	<u>Clerks</u>	<u>Officers</u>	<u>Clerks</u>	<u>Officers</u>	<u>Clerks</u>
2.50	2.50	1.30	2.60	.50	1.0	1.0	1.0	5.30	7.10
2.50	2.50	1.30	2.60	.50	1.0	1.0	1.0	5.30	7.10
2.00	2.00	2.75	5.50	2.50	5.0	4.0	2.0	11.25	14.50
2.00	2.00	2.75	5.50	2.50	5.0	4.0	2.0	11.25	14.50
1.40	1.40	1.30	2.60	3.0	2.00	1.0	5.0	6.70	11.0
1.00	1.00	1.30	2.60	.40	.50	1.0	2.0	3.70	6.10
.40	.40			.60			1.0	1.0	1.40
				2.0	1.50		1.0	2.0	2.50
1.80	1.80	1.25	2.50	1.50	1.0	1.0	1.0	5.55	6.30
1.80	1.80	1.25	2.50	1.50	1.0	1.0	1.0	5.55	6.30
4.70	4.70	7.45	14.90	3.50	6.0	8.0	21.0	23.65	46.60
4.00	4.00	4.25	8.50	.50	.50	4.0	11.0	12.75	24.0
				.10			1.0	.10	1.0
.50	.50	3.20	6.40	1.50	3.50	4.0	5.0	9.20	15.40
				.10			2.0	.10	2.0
.20	.20			1.30	2.0		2.0	1.50	4.20

ESTIMATED PERSONNEL NEEDS FOR FIELD SERVICE
FOR REGULAR FUNCTIONS
FISCAL YEAR 1947

	<u>POLITICAL</u>		<u>ECONOMIC & COMMERCE</u>		<u>CONSULAR</u>		<u>ADMINISTRATIVE</u>
	<u>Officers</u>	<u>Clerks</u>	<u>Officers</u>	<u>Clerks</u>	<u>Officers</u>	<u>Clerks</u>	<u>Officers</u>
<u>MOROCCO</u>	2.00	2.00	1.85	3.70	.50	1.0	4.0
Tangier	2.00	2.00	1.85	3.70	.50	1.0	4.0
<u>TOTAL AFRICA & MIDDLE EAST</u>	27.0	27.0	34.20	68.40	24.10	45.0	36.0

ESTIMATED PERSONNEL NEEDS FOR FIELD SERVICE
FOR REGULAR FUNCTIONS
FISCAL YEAR 1947

POLITICAL	ECONOMIC & COMMERCE		CONSULAR		ADMINISTRATIVE		TOTAL		
	Clerks	Officers	Clerks	Officers	Clerks	Officers	Clerks	Officers	
00	2.00	1.85	3.70	.50	1.0	4.0	4.0	8.35	10.70
00	2.00	1.85	3.70	.50	1.0	4.0	4.0	8.35	10.70
0	27.0	34.20	68.40	24.10	45.0	36.0	71.0	121.30	211.40

ESTIMATED PERSONNEL FOR FIELD SERVICE
FOR REGULAR FUNCTIONS
FISCAL YEAR 1947

	<u>POLITICAL</u>		<u>ECONOMIC & COMMERCIAL</u>		<u>CONSULAR</u>		<u>ADMINISTRATIVE</u>
	<u>Officers</u>	<u>Clerks</u>	<u>Officers</u>	<u>Clerks</u>	<u>Officers</u>	<u>Clerks</u>	<u>Officers</u>
<u>EASTERN ASIA</u>							
<u>CHINA</u>	28.5	28.5	24.65	49.30	21.5	103.5	20.0
Amoy	.5	.5			.5	2.5	
Chungking	1.0	1.0	3.0	6.0	4.3	20.0	4.0
Canton	2.0	2.0	2.20	4.4	2.0	10.0	1.0
Chefoo	.5	.5	.25	.5	.5	2.5	
Foochow	.5	.5	.25	.5	.5	2.5	1.0
Hangkow	2.0	2.0	1.20	2.4	2.0	10.0	1.0
Harbin	2.0	2.0	1.15	2.3	1.0	5.0	1.0
Kunming	1.0	1.0	1.0	2.0	1.20	5.0	1.0
Kweilin			.5	1.0			
Nanking	6.0	6.0	2.0	4.0	.5	2.5	1.0
Mukden	2.0	2.0	2.30	4.6			1.0
Peiping	2.0	2.0			5.0	25.0	1.0
Shanghai	4.0	4.0	7.60	15.2	.5	2.5	4.0
Swatow	.5	.5	.5	1.0	2.3	10.0	
Tientsin	2.0	2.0	2.20	4.5	.20	1.0	4.0
Tihwa	1.5	1.5			.5	2.5	
Tsingtao	.5	.5	.5	1.0	.5	2.5	
Tsinan	.5	.5					
<u>PHILIPPINE IS.</u>	5.0	5.0	6.25	12.5	8.5	6.0	4.0
Manila	3.0	3.0	6.25	12.5	6.30	4.0	4.0
Cebu	1.0	1.0			1.10	1.0	
Davao							
Zamboanga	1.0	1.0			1.10	1.0	

ESTIMATED PERSONNEL FOR FIELD SERVICE
FOR REGULAR FUNCTIONS
FISCAL YEAR 1947

<u>POLITICAL</u>		<u>ECONOMIC & COMMERCIAL</u>		<u>CONSULAR</u>		<u>ADMINISTRATIVE</u>		<u>TOTAL</u>	
<u>Officers</u>	<u>Clerks</u>	<u>Officers</u>	<u>Clerks</u>	<u>Officers</u>	<u>Clerks</u>	<u>Officers</u>	<u>Clerks</u>	<u>Officers</u>	<u>Clerks</u>
28.5	28.5	24.65	49.30	21.5	103.5	20.0	27.0	94.65	208.3
.5	.5			.5	2.5		2.0	1.0	5.0
1.0	1.0	3.0	6.0	4.3	20.0	4.0	3.0	12.3	30.0
2.0	2.0	2.20	4.4	2.0	10.0	1.0	2.0	7.2	18.4
.5	.5	.25	.5	.5	2.5		1.0	1.25	4.5
.5	.5	.25	.5	.5	2.5	1.0	1.0	2.25	4.5
2.0	2.0	1.20	2.4	2.0	10.0	1.0	1.0	6.2	15.4
2.0	2.0	1.15	2.3	1.0	5.0	1.0	1.0	5.15	10.3
1.0	1.0	1.0	2.0	1.20	5.0	1.0		4.2	8.0
		.5	1.0				1.0	.5	2.0
6.0	6.0	2.0	4.0	.5	2.5	1.0	1.0	9.5	13.5
2.0	2.0	2.30	4.6			1.0	1.0	5.3	7.6
2.0	2.0			5.0	25.0	1.0	1.0	8.0	28.0
4.0	4.0	7.60	15.2	.5	2.5	4.0	4.0	16.1	25.7
.5	.5	.5	1.0	2.3	10.0		1.0	3.3	12.5
2.0	2.0	2.20	4.5	.20	1.0	4.0	3.0	8.4	10.4
1.5	1.5			.5	2.5		1.0	2.0	5.0
.5	.5	.5	1.0	.5	2.5		2.0	1.5	6.0
.5	.5						1.0	.5	1.5
5.0	5.0	6.25	12.5	8.5	6.0	4.0	4.0	23.75	77.5
3.0	3.0	6.25	12.5	6.30	4.0	4.0	1.0	19.55	20.5
1.0	1.0			1.10	1.0		1.0	2.10	3.0
							1.0		1.0
1.0	1.0			1.10	1.0		1.0	2.10	3.0

ESTIMATED PERSONNEL FOR FIELD SERVICES
FOR REGULAR FUNCTIONS
FISCAL YEAR 1947

	<u>POLITICAL</u>		<u>ECONOMIC & COMMERCIAL</u>		<u>CONSULAR</u>		<u>ADMINI</u>
	<u>Officers</u>	<u>Clerks</u>	<u>Officers</u>	<u>Clerks</u>	<u>Officers</u>	<u>Clerks</u>	<u>Officers</u>
<u>JAPAN</u>	23.5	23.5	12.15	24.3	11.0	37.0	10.0
Tokyo	20.0	20.0	6.35	12.7	5.0	25.0	4.0
Dairen	2.0	2.0	1.40	2.8	1.0	2.0	
Kobe			1.10	2.2	2.0	4.0	1.0
Nagasaka (Prior to 8/9/45)			1.0	2.0	.5	1.0	
Osaka			1.10	2.2	1.0	2.0	1.0
Taihoku	1.5	1.5	.10	.20	.5	1.0	
Yokahama			1.10	2.2	1.0	2.0	4.0
<u>KOREA</u>	4.0	4.0	.5	1.0	.5	1.0	1.0
Keijo (Seoul)	4.0	4.0	.5	1.0	.5	1.0	1.0
<u>THAILAND</u>	3.0	3.0	2.4	4.8	1.0	2.0	4.0
Bangkok	3.0	3.0	2.4	4.8	1.0	2.0	4.0
<u>TOTAL EASTERN ASIA</u>	64.0	64.0	45.95	91.9	42.5	149.5	39.0

ESTIMATED PERSONNEL FOR FIELD SERVICES
FOR REGULAR FUNCTIONS
FISCAL YEAR 1947

<u>POLITICAL</u>		<u>ECONOMIC & COMMERCIAL</u>		<u>CONSULAR</u>		<u>ADMINISTRATIVE</u>		<u>TOTAL</u>	
<u>Officers</u>	<u>Clerks</u>	<u>Officers</u>	<u>Clerks</u>	<u>Officers</u>	<u>Clerks</u>	<u>Officers</u>	<u>Clerks</u>	<u>Officers</u>	<u>Clerks</u>
23.5	23.5	12.15	24.3	11.0	37.0	10.0	17.0	56.65	101.8
20.0	20.0	6.35	12.7	5.0	25.0	4.0	8.0	35.35	65.7
2.0	2.0	1.40	2.8	1.0	2.0		2.0	4.4	8.8
		1.10	2.2	2.0	4.0	1.0	1.0	4.1	7.2
		1.0	2.0	.5	1.0		2.0	1.5	5.0
		1.10	2.2	1.0	2.0	1.0	1.0	3.1	5.2
1.5	1.5	.10	.20	.5	1.0		1.0	2.1	3.7
		1.10	2.2	1.0	2.0	4.0	2.0	6.1	6.2
4.0	4.0	.5	1.0	.5	1.0	1.0	1.0	6.0	7.0
4.0	4.0	.5	1.0	.5	1.0	1.0	1.0	6.0	7.0
3.0	3.0	2.4	4.8	1.0	2.0	4.0	2.0	10.4	11.8
3.0	3.0	2.4	4.8	1.0	2.0	4.0	2.0	10.4	11.8
64.0	64.0	45.95	91.9	42.5	149.5	39.0	51.0	191.45	356.4

BUREAU OF FOREIGN AND DOMESTIC COMMERCE
ESTIMATE OF PERSONNEL NEEDED
FOR
ECONOMIC AND COMMERCIAL REPORTING

STATEMENT OF PURPOSE

Among the principal statutory functions of the Department of Commerce are the fostering, promotion, and domestic commerce and participation in formulating the foreign economic policy of the U.S. The Bureau of Foreign and Domestic Commerce is the Department's agency directly charged with foreign trade promotion. In the performance of these functions, assembling information on changing business conditions in all foreign markets, the Bureau must exercise the utmost care, accuracy, and vigilance of U.S. reporting officers stationed abroad. Detailed data must be obtained on tariffs, taxation, banking and exchange, commercial policy, trade practices and restrictions, changes in supply and demand for specific commodities, volume of imports and exports, and number of U.S. business firms engaged in foreign trade.

War reduced the flow of commercial information from foreign sources to a mere trickle of information. Radical changes in the economies and commercial processes of many lands. As a result, much of the information that the Bureau in the past has become obsolescent and a greatly increased volume of reporting is now in order. Recent years have demonstrated that a substantial expansion of our foreign trade is a prime prerequisite for our production at or near the full capacity of our plants, with a consequent assurance of a high level of living in peacetime. The development of foreign trade on such a scale as would tangibly assist us in the solution of our problems is not conceivable without a greatly strengthened personnel of reporting officers, stationed abroad, of maintaining an up-to-the-minute flow of economic and commercial information to the Bureau.

The following summary of personnel represents a basic minimum of requirements which would enable the Bureau of Foreign and Domestic Commerce to advise the Government and business of the United States in a manner consistent with its statutory responsibilities.

BUREAU OF FOREIGN AND DOMESTIC COMMERCE
ESTIMATE OF PERSONNEL NEEDED
FOR
ECONOMIC AND COMMERCIAL REPORTING

43

STATEMENT OF PURPOSE

Primary functions of the Department of Commerce are the fostering, promotion, and development of foreign participation in formulating the foreign economic policy of the U.S. The Bureau of Foreign and Domestic Commerce is directly charged with foreign trade promotion. In the performance of this function, which includes determining business conditions in all foreign markets, the Bureau must rely largely upon the competence, accuracy, and reliability of U.S. reporting officers stationed abroad. Detailed data must be continuously amassed in each country regarding trade and exchange, commercial policy, trade practices and restrictions, legislation affecting commerce, and specific commodities, volume of imports and exports, and numerous other subjects of vital concern to the Bureau of Foreign and Domestic Commerce.

Commercial information from foreign sources has increased from a mere trickle of intelligence, causing at the same time confusion and commercial processes of many lands. As a result, much of the information assembled by the Bureau is becoming obsolete and a greatly increased volume of reporting is now in order. Also, the events of recent years and the substantial expansion of our foreign trade is a prime prerequisite to the maintenance of our industrial capacity of our plants, with a consequent assurance of a high level of employment for U.S. manpower in foreign trade on such a scale as would tangibly assist us in the solution of our domestic economic problems. Without a greatly strengthened personnel of reporting officers, stationed abroad for the express purpose of maintaining a continuous flow of economic and commercial information to the Bureau.

The personnel represented herein represents a basic minimum of requirements which would permit the Bureau of Foreign and Domestic Commerce to conduct the economic and business of the United States in a manner consistent with the standards of performance inherent in

SCOPE OF LISTED REQUIREMENTS

This estimate of personnel gives the requirements for economic and commercial reporting, cover

ECONOMIC

- | | |
|----------------------------|---|
| 1. General economic | 7. Forestry |
| 2. Statistical | 8. Fisheries |
| 3. Finance | 9. Manufacturing |
| 4. Commercial policy | 10. Labor |
| 5. Legislation | 11. Construction |
| 6. Commerce | 12. Miscellaneous |
| a. Distribution | a. Geography |
| b. Trade practices | b. Government |
| c. Advertising | c. Population |
| d. Cartels and monopolies | d. Health and sanitation |
| e. Arbitration | e. Recreation |
| f. Storage and warehousing | f. Professional, technical,
and other associations |
| g. Buying methods | 13. U.S. property and claims |
| h. Credit and collections | 14. Colonial affairs |

COMMERCIAL

- | | |
|--|---------------------------------|
| 1. Chemicals | 10. Metals |
| 2. Drugs and pharmaceuticals | 11. Pulp and paper |
| 3. Electrical machinery and
apparatus | 12. Rubber |
| 4. Fats and oils | 13. Textiles |
| 5. Foodstuffs | 14. Specialties |
| 6. Leather | 15. Motion pictures |
| 7. Lumber | 16. Public utilities |
| 8. Machinery industrial, and
agricultural | 17. Transportation |
| 9. Motive products | 18. Communications |
| | 19. Commercial intelligence (W) |

The list does not cover reporting on minerals since that subject is provided for in personnel by the Bureau of Mines. Similarly, foodstuffs, fats, and oils reporting included in this tabulation reporting schedules and foreign market surveys required by the Bureau, and does not include that provided for in the Joint Reporting Schedules of the Departments of Agriculture and Commerce.

SCOPE OF LISTED REQUIREMENTS

ives the requirements for economic and commercial reporting, covering the following subjects:

44

ECONOMIC

- | | |
|----------------------------|---|
| General economic | 7. Forestry |
| Statistical | 8. Fisheries |
| Finance | 9. Manufacturing |
| Commercial policy | 10. Labor |
| Legislation | 11. Construction |
| Commerce | 12. Miscellaneous |
| a. Distribution | a. Geography |
| b. Trade practices | b. Government |
| c. Advertising | c. Population |
| d. Cartels and monopolies | d. Health and sanitation |
| e. Arbitration | e. Recreation |
| f. Storage and warehousing | f. Professional, technical,
and other associations |
| g. Buying methods | 13. U.S. property and claims |
| h. Credit and collections | 14. Colonial affairs |

COMMERCIAL

- | | |
|--|-----------------------------------|
| 1. Chemicals | 10. Metals |
| 2. Drugs and pharmaceuticals | 11. Pulp and paper |
| 3. Electrical machinery and
apparatus | 12. Rubber |
| 4. Fats and oils | 13. Textiles |
| 5. Foodstuffs | 14. Specialties |
| 6. Leather | 15. Motion pictures |
| 7. Lumber | 16. Public utilities |
| 8. Machinery industrial, and
agricultural | 17. Transportation |
| 9. Motive products | 18. Communications |
| | 19. Commercial intelligence (WTD) |

porting on minerals since that subject is provided for in personnel requirements compiled independently
rly, foodstuffs, fats, and oils reporting included in this tabulation is intended to satisfy the special
market surveys required by the Bureau, and does not include that portion of agricultural subjects which
eporting Schedules of the Departments of Agriculture and Commerce.

The purpose of "Commercial Intelligence" reporting (Item 19 of Commercial subjects) is to maintain a Trade Directory which consists of detailed records relating to the financial background and business of foreign importers, exporters, and other potential buyers and sellers abroad. The Directory is an authoritative factual data permitting U.S. business firms to select foreign agents or distributors, to determine and analyze the sales opportunities in foreign markets.

The reporting posts as indicated in the detailed estimate are classified as follows:

1. A subject which requires the full time of an officer.
2. A subject which requires most of an officer's time.
3. An important subject, but requiring less than 50% of an officer's time.
4. A subject which can be handled in a routine manner.

"Intelligence" reporting (Item 19 of Commercial subjects) is to maintain in the Bureau files a World Directory of Business Firms, which contains detailed records relating to the financial background and business qualifications of some 600,000 other potential buyers and sellers abroad. The Directory is an authoritative source of essential information on business firms to select foreign agents or distributors, to determine credit policy and terms, and to identify potential foreign markets.

45

Subjects in the detailed estimate are classified as follows:

- A subject which requires the full time of an officer.
- A subject which requires most of an officer's time.
- An important subject, but requiring less than 50% of an officer's time.
- A subject which can be handled in a routine manner.

SUMMARY BY COUNTRY
(DEPARTMENT OF COMMERCE)

Country or Post	Man Years Required	Type of Officer	
		Type 1	Type 2
<u>AMERICAN REPUBLICS</u>			
Argentina	12	3	9
Bolivia	5	1	4
Brazil	21	4	17
Chile	10	2	8
Colombia	9	1	8
Costa Rica	3	1	2
Cuba	7	1	6
Dominican Republic	2	1	1
Ecuador	6	1	5
El Salvador	2	1	1
Guatemala	3	1	2
Haiti	2	1	1
Honduras	2	1	1
Mexico	20	4	16
Nicaragua	2	1	1
Panama	3	1	2
Paraguay	2	1	1
Peru	7	1	6
Uruguay	5	1	4
Venezuela	6	1	5
Total for American Republics	<u>129</u>	<u>29</u>	<u>100</u>
<u>BRITISH COMMONWEALTH, EMPIRE AND POSSESSIONS</u>			
Australia	9	3	6
Canada	19	6	13
Great Britain and Northern Ireland	26	5	21

Country or Post	Man Years Required	Type of Officer	
		Type 1	Type 2
<u>BRITISH COMMONWEALTH, EMPIRE AND POSSESSIONS (cont.)</u>			
India	14	2	12
Eire	3	1	2
New Zealand	4	1	3
Union of South Africa	10	2	8
Great Britain Possessions	18	0	18
Total for British Commonwealth, Empire and Possessions	<u>103</u>	<u>20</u>	<u>83</u>
<u>EUROPE</u>			
Albania	1	0	1
Austria	5	1	4
Belgium	9	3	6
Belgium Possessions	2	1	1
Bulgaria	3	2	1
Czechoslovakia	5	2	3
Denmark	5	2	3
Finland	3	1	2
France	21	6	15
French Possessions	13	3	10
Germany	16	6	10
Greece	5	2	3
Hungary	4	1	3
Iceland	2	1	1
Italy	14	3	11
Luxembourg	2	1	1
Netherlands	9	3	6
Netherlands Possessions	8	1	7
Norway	5	1	4
Poland	6	3	3
Portugal	6	2	4
Portuguese Possessions	2	0	2

Country or Post	Man Years Required	Type of Officer	
		Type 1	Type 2
<u>EUROPE (cont.)</u>			
Rumania	3	2	1
Spain and Possessions	10	3	7
Sweden	8	3	5
Switzerland	8	2	6
U.S.S.R.	12	4	8
Yugoslavia	4	2	2
Total for Europe	<u>191</u>	<u>61</u>	<u>130</u>
<u>AFRICA AND MIDDLE EAST</u>			
Afghanistan	1	0	1
Egypt	7	2	5
Ethiopia	2	0	2
Iran	2 $\frac{1}{2}$	1	1 $\frac{1}{2}$
Iraq	3	1	2
Lebanon	1	0	1
Liberia	1	0	1
Palestine and Trans-Jordan	2 $\frac{1}{2}$	1	1 $\frac{1}{2}$
Saudi Arabia	2	0	2
Syria	1	0	1
Turkey	7	3	4
Morocco	1	0	1
Total for Africa and Middle East	<u>31</u>	<u>8</u>	<u>23</u>
<u>EASTERN ASIA</u>			
China	23	4	19
Philippines	6	2	4

Country or Post		Man Years Required	Type of Officer	
			Type 1	Type 2
EASTERN ASIA (cont.)				
	Japan	11	2	9
	Thailand	2	1	1
	Total for Eastern Asia	<u>42</u>	<u>9</u>	<u>33</u>
<u>GRAND TOTAL</u>	American Republics	129		
	British Commonwealth, Empire and Possessions	103		
	Europe	191		
	Africa and Middle East	31		
	Eastern Asia	<u>42</u>	<u>127</u>	<u>369</u>
		<u>496</u>		

(In the statistical table for Regular Functions there has been added to this total of 496 man years, 35.9 man years for regular mineral reporting and 10.5 man years for regular aviation reporting, making a total of 542.0 for the entire Economic and Commercial Functions.)

The Bureau of Foreign and Domestic Commerce, Department of Commerce, has submitted a most comprehensive detailed estimate of officer personnel needed to perform the Economic and Commercial functions. These were first submitted on February 8, 1945 and revised on July 12, 1945. It was deemed impracticable to include the entire text of the Commerce estimate in this report. A copy, however, has been retained in the Department of Foreign Service Planning and may be reviewed for complete detail.

Country or Post (cont.)	Man Years Required	Type of Officer	
		Type 1	Type 2
	11	2	9
	<u>2</u>	<u>1</u>	<u>1</u>
Total for Eastern Asia	<u>42</u>	<u>9</u>	<u>33</u>
American Republics	129		
British Commonwealth, Empire and Possessions	103		
Europe	191		
Africa and Middle East	31		
Eastern Asia	<u>42</u>		
	<u>496</u>	<u>127</u>	<u>369</u>

(In the statistical table for Regular Functions there has been added to this total of 496 man years, 35.9 man years for regular mineral reporting and 10.5 man years for regular aviation reporting, making a total of 542.0 for the entire Economic and Commercial Functions.)

Bureau of Foreign and Domestic Commerce, Department of Commerce, has submitted a most comprehensive and accurate estimate of officer personnel needed to perform the Economic and Commercial functions. These estimates were submitted on February 8, 1945 and revised on July 12, 1945. It was deemed impracticable to include the full extent of the Commerce estimate in this report. A copy, however, has been retained in the Division of Economic Planning and may be reviewed for complete detail.

ESTIMATED NEEDS FOR CONSULAR OFFICERS AND CLERKSFISCAL YEAR 1947

In arriving at the estimate for Consular Officers for 1947, the Division utilized the previously prepared for the liberated areas by the Passport Division, the Visa Division, the Problems Division, and the Division of Foreign Activity Correlation. For offices outside the Personnel Inventory of the Foreign Service as of April 1, 1945 provided data as to the devoted to the performance of the consular function.

The data obtained from the above sources were then checked against the Summary of Business Form 243, and were examined and adjusted upward or downward, post by post, by the officers in command who supervise the field activities relating to the consular function. On the basis of it appeared reasonable to assume that the man years of officers required on this function in 1947 than is the case at the present time, for three principal reasons: (1) the reopening of offices, (2) the large number of cases that have accumulated during the war period and which are coming more active, and (3) the new welfare and protection cases resulting from the war. take into account these conditions.

In arriving at the estimate for clerical assistance for the consular function, the Personnel Inventory of the Foreign Service as of April 1, 1945 was again utilized to compute the ratio existing between officers and clerks, and this same ratio was applied arbitrarily for the 1947 estimate.

ESTIMATED NEEDS FOR CONSULAR OFFICERS AND CLERKSFISCAL YEAR 1947

estimate for Consular Officers for 1947, the Division utilized the estimates of the liberated areas by the Passport Division, the Visa Division, the Special War Relocation Division of Foreign Activity Correlation. For offices outside these areas, the Division of Foreign Service as of April 1, 1945 provided data as to the officer man years of the consular function.

The data from the above sources were then checked against the Summary of Business reports, and adjusted upward or downward, post by post, by the officers in the Department field activities relating to the consular function. On the basis of this approach, it is assumed that the man years of officers required on this function would be greater than at the present time, for three principal reasons: (1) the reopening of closed consular offices; (2) the number of cases that have accumulated during the war period and which are now being processed; (3) the new welfare and protection cases resulting from the war. These estimates are based on the present conditions.

For the estimate for clerical assistance for the consular function, the Personnel Inventory of April 1, 1945 was again utilized to compute the ratio existing between officers and clerical assistance. This ratio was applied arbitrarily for the 1947 estimate.

ESTIMATE OF CONSULAR OFFICER AND CONSULAR CLERK PERSONNEL
FOR FISCAL YEAR 1947

	: : Officers : 10/1/39	: : Total : Personnel : 10/1/39	: : Officers : 4/1/45	: : Total : Personnel : 4/1/45	: : Consular : Officers : 4/1/45	: : Man Yrs. on : Coas. Functions : 4/1/45
AMERICAN REPUBLICS	:	:	:	:	:	:
<u>ARGENTINA</u>	:	:	:	:	:	:
Buenos Aires	: 18	: 59	: 26	: 102	: 2	: 2.1
Bahia Blanca	:	:	:	:	:	:
Mendoza	:	:	:	:	:	:
Salta	:	:	:	:	:	:
Rosario	:	:	:	:	:	:
Cordoba	:	:	:	:	:	:
<u>BOLIVIA</u>	:	:	:	:	:	:
La Paz	: 5	: 13	: 12	: 54	: 2	: 1.3
Cochamba	:	:	: 1	: 4	: 1	: .15
<u>BRAZIL</u>	:	:	:	:	:	:
Rio de Janeiro	: 13	: 47	: 37	: 185	: 2	: 2.0
Bahia	: 2	: 6	: 3	: 13	: 2	: .9
Bello Horizonte	:	:	: 1	: 6	: 1	: .1
Curitiba	:	:	: 1	: 9	: 1	: .1
Florianopolis	:	:	:	:	:	:
Fortaleza	:	:	: 1	: 6	: 1	: .2
Natal	:	:	: 1	: 5	: 1	: .1
Manaos	:	:	: 1	: 5	: 1	: .2
Para	: 1	: 5	: 3	: 19	: 2	: 1.1
Pernambuco	: 2	: 7	: 4	: 11	: 3	: 1.3
Porto Alegre	: 2	: 5	: 4	: 15	: 1	: .3
Santos	: 1	: 5	: 1	: 8	: 1	: .15

ESTIMATE OF CONSULAR OFFICER AND CONSULAR CLERK PERSONNEL
FOR FISCAL YEAR 1947

Officers	Total Personnel	Officers	Total Personnel	Consular Officers	Man Yrs. on Coas. Functions	Estimates for Liberated Areas	Officers 1947	TOTAL Clerks 1947
1/39	10/1/39	4/1/45	4/1/45	4/1/45	4/1/45			
:	:	:	:	:	:	:	:	:
:	:	:	:	:	:	:	:	:
:	59	26	102	2	2.1	:	4. 2.1 .5 .3 .3 .5	9. 8.
:	:	:	:	:	:	:	:	:
:	13	12 1	54 4	2 1	1.3 .15	:	1.5 1.3 .2	1. 3. 2.5 .5
:	:	:	:	:	:	:	:	:
:	47 6	37 3 1 1	185 13 6 9	2 2 1 1	2.0 .9 .1 .1	:	9.5 2.5 1.1 .1 .1 .1 .2 .1 .2	26.5 7. 2.5 .5 .5 .1 1. 1. .5
:	5	3	19	2	1.1	:	1.2	2.
:	7	4	11	3	1.3	:	1.4	2.
:	5	4	15	1	.3	:	.3	1.4
:	5	1	8	1	.15	:	.1	1.

	Officers	Personnel	Officers	Personnel	Consular Officers	Man Yrs. on Cons. Functions	Es
	10/1/39	10/1/39	4/1/45	4/1/45	4/1/45	4/1/45	
Sao Paulo	5	15	9	70	3	2.0	
Victoria	1	2	1	3	1	.2	
<u>CHILE</u>							
Santiago	10	31	27	109	4	3.1	
Antofogasta	1	4	2	6	2	.6	
Arica			1	4	1	.1	
Concepcion			1	4	1	.15	
Punta Arenas			1	5	1	.1	
Valdivia							
Valparaiso	2	6	4	17	2	.7	
<u>COLOMBIA</u>							
Bogota	7	19	20	67	1	1.0	
Barranquilla	3	6	4	11	2	1.2	
Bucaramanga			1	3	1	.2	
Buenaventura			1	3	1	.4	
Cali	1	3	4	8	2	.7	
Cartagena		1	2	7	2	.4	
Medellin			2	12	2	.5	
<u>COSTA RICA</u>							
San Jose	4	16	10	53	2	1.3	
Port Limon	1	2	1	3	1	.4	
Puntarenas			1	2	1	.4	
<u>CUBA</u>							
Habana	20	59	31	138	5	5.4	
Antilla	1	5	1	5	1	.7	

: Total :		: Total :		: Consular :		: Man Yrs. on :		: Estimates for:		: TOTAL :	
Officers :	Personnel :	Officers :	Personnel :	Officers :	Personnel :	Cons. :	Functions :	Liberated :	Officers :	Clerks :	1947 :
10/1/39 :	10/1/39 :	4/1/45 :	4/1/45 :	4/1/45 :	4/1/45 :	4/1/45 :	4/1/45 :	Areas :	1947 :	1947 :	1947 :
:	:	:	:	:	:	:	:	:	:	:	:
15	9	70	3	2.0					2.	6.5	
2	1	3	1	.2					.2	.5	
:	:	:	:	:	:	:	:	:	:	:	:
:	:	:	:	:	:	:	:	:	5.	13.	:
:	:	:	:	:	:	:	:	:	:	:	:
31	27	109	4	3.1					3.2	9.	
4	2	6	2	.6					.6	1.3	
:	1	4	1	.1					.1	.2	
:	1	4	1	.15					.2	.3	
:	1	5	1	.1					.1	.5	
:	:	:	:	:	:	:	:	:	.1	.2	
6	4	17	2	.7					.7	1.5	
:	:	:	:	:	:	:	:	:	:	:	:
:	:	:	:	:	:	:	:	:	4.5	10.	:
:	:	:	:	:	:	:	:	:	:	:	:
19	20	67	1	1.0					1.	2.5	
6	4	11	2	1.2					1.2	2.	
:	1	3	1	.2					.2	.5	
:	1	3	1	.4					.4	.5	
3	4	8	2	.7					.7	1.5	
1	2	7	2	.4					.5	1.5	
:	2	12	2	.5					.5	1.5	
:	:	:	:	:	:	:	:	:	:	:	:
:	:	:	:	:	:	:	:	:	2.5	5.	:
:	:	:	:	:	:	:	:	:	:	:	:
16	10	53	2	1.3					1.5	4.	
2	1	3	1	.4					.5	.5	
:	1	2	1	.4					.5	.5	
:	:	:	:	:	:	:	:	:	:	:	:
:	:	:	:	:	:	:	:	:	10.	27.5	:
:	:	:	:	:	:	:	:	:	:	:	:
59	31	138	5	5.4					7.	20.	
5	1	5	1	.7					1.	2.	

	Officers 10/1/39	Total Personnel 10/1/39	Officers 4/1/45	Total Personnel 4/1/45	Consular Officers 4/1/45	Man Yrs. on Cons.Functions 4/1/45	Est Li
Camaguey	:	:	1	4	1	.4	:
Cienfuegos	1	3	1	5	1	.2	:
Matanzas	1	3	:	:	:	:	:
Nuevitas	1	3	1	2	1	.1	:
Santiago de Cuba	:	:	:	:	:	:	:
<u>DOMINICAN REPUBLIC</u>	:	:	:	:	:	:	:
Ciudad Trujillo	4	19	7	50	1	1.0	:
<u>ECUADOR</u>	:	:	:	:	:	:	:
Quito	1	10	12	50	1	1.1	:
Guayaquil	3	9	4	18	2	.9	:
<u>EL SALVADOR</u>	:	:	:	:	:	:	:
San Salvador	3	13	6	31	1	.8	:
<u>GUATEMALA</u>	:	:	:	:	:	:	:
Guatemala	5	20	11	37	2	1.4	:
<u>HAITI</u>	:	:	:	:	:	:	:
Port-au-Prince	4	17	7	41	2	1.1	:
<u>HONDURAS</u>	:	:	:	:	:	:	:
Tegucigalpa	1	14	4	26	1	.7	:
La Ceiba	2	5	2	5	2	.8	:
Puerto Cortes	1	2	2	4	2	.6	:

Total Personnel 10/1/39	Officers 4/1/45	Total Personnel 4/1/45	Consular Officers 4/1/45	Man Yrs. on Cons.Functions 4/1/45	Estimates for: Liberated Areas	Officers 1947	TOTAL Clerks 1947
	1	4	1	.4		.5	1.4
3	1	5	1	.2		.4	1.6
3							
3	1	2	1	.1		.1	.5
						1.	4.
19	7	50	1	1.0		1.	4.
						2.	4.
10	12	50	1	1.1		1.1	2.
9	4	18	2	.9		.9	2.
						1.	4.
13	6	31	1	.8		1.	4.
						1.5	4.
20	11	37	2	1.4		1.5	4.
						1.	3.
17	7	41	2	1.1		1.	3.
						2.	3.
14	4	26	1	.7		.7	1.4
5	2	5	2	.8		.8	1.2
2	2	4	2	.6		.5	.4

	: :Officers : 10/1/39	: :Total : Personnel : 10/1/39	: :Officers : 4/1/45	: :Total : Personnel : 4/1/45	: :Consular : Officers : 4/1/45	: :Man Years on : Cons.Functions: : 4/1/45	: :Estimate : Lib
<u>MEXICO</u>							
Mexico City	: 22	: 72	: 49	: 237	: 15	: 14.5	:
Acapulco	:	:	: 1	: 3	: 1	: .3	:
Agua Prieta	: 2	: 4	: 2	: 6	: 2	: .65	:
Chihuahua	: 2	: 4	: 2	: 10	: 2	: .4	:
Ciudad Juarez	: 4	: 9	: 6	: 22	: 5	: 2.9	:
Durango	: 1	: 3	: 1	: 4	: 1	: .1	:
Ensenada	: 3	: 6	:	:	:	:	:
Guadalajara	: 2	: 5	: 2	: 11	: 2	: 1.0	:
Guaymas	: 1	: 3	: 2	: 5	: 2	: .7	:
Manzanillo	:	:	: 1	: 4	: 1	: .4	:
Matamoros	: 2	: 4	: 3	: 13	: 2	: 1.3	:
Mazatlan	: 2	: 5	: 3	: 8	: 3	: 1.2	:
Merida	: 1	: 3	: 1	: 7	: 1	: .25	:
Mexicali	: 2	: 4	: 3	: 7	: 3	: 1.5	:
Monterrey	: 4	: 9	: 5	: 20	: 4	: 2.1	:
Nogales	: 2	: 5	: 3	: 14	: 2	: 1.1	:
Nuevo Laredo	: 3	: 5	: 4	: 12	: 3	: 1.45	:
Piedras Negras	: 2	: 4	: 2	: 7	: 2	: 1.1	:
Reynosa	:	:	: 1	: 7	: 1	: .6	:
San Luis Potosi	: 2	: 6	: 1	: 5	: 1	: .1	:
Saltillo	:	: 2	:	:	:	:	:
Tampico	: 2	: 6	: 2	: 10	: 2	: .5	:
Tapachula	:	:	: 1	: 5	: 1	: .1	:
Tijuana	:	:	: 4	: 11	: 4	: 2.8	:
Torreon	: 2	: 5	: 2	: 6	: 2	: .8	:
Veracruz	: 2	: 8	: 2	: 9	: 2	: .7	:
<u>NICARAGUA</u>							
Managua	: 3	: 16	: 9	: 52	: 1	: 1.3	:
<u>PANAMA</u>							
Panama	: 7	: 21	: 7	: 64	: 3	: 1.8	:

Total Personnel 10/1/39	Officers 4/1/45	Total Personnel 4/1/45	Consular Officers 4/1/45	Man Years on Cons.Functions 4/1/45	Estimates for: Liberated Areas	Officers 1947	TOTAL Clerks 1947
						38.	84.
72	49	237	15	14.5		14.5	26.
	1	3	1	.3		.3	.4
4	2	6	2	.65		.7	1.
4	2	10	2	.4		.4	3.8
9	6	22	5	2.9		2.9	6.
3	1	4	1	.1		.1	.8
6						.5	.5
5	2	11	2	1.0		1.	3.
3	2	5	2	.7		.7	1.
	1	4	1	.4		.4	.8
4	3	13	2	1.3		1.3	3.1
5	3	8	3	1.2		1.2	1.5
3	1	7	1	.25		.3	1.5
4	3	7	3	1.5		1.5	1.5
9	5	20	4	2.1		2.5	7.5
5	3	14	2	1.1		1.5	6.
5	4	12	3	1.45		1.5	3.
4	2	7	2	1.1		1.1	2.
	1	7	1	.6		.6	2.9
6	1	5	1	.1		.1	.7
2							.5
6	2	10	2	.5		.5	1.9
	1	5	1	.1		.1	.7
	4	11	4	2.8		2.8	4.5
5	2	6	2	.8		.8	1.6
8	2	9	2	.7		.7	1.8
						1.5	5.5
						1.5	5.5
16	9	52	1	1.3		3.	11.
						2.	9.
21	7	64	3	1.8			

	: :Officers : 10/1/39	: : Total : Personnel : 10/1/39	: : Officers : 4/1/45	: : Total : Personnel : 4/1/45	: : Consular : Officers : 4/1/45	: : Man Years on : Cons. Functions : 4/1/45	: : Esti : Lib : A
Colon	: 2	: 6	: 2	: 6	: 2	: 1.0	:
<u>PARAGUAY</u>	:	:	:	:	:	:	:
Asuncion	: 2	: 11	: 7	: 37	: 1	: .4	:
<u>PERU</u>	:	:	:	:	:	:	:
Callao-Lima	: 6	: 13	:	:	:	:	:
Lima	: 3	: 14	: 22	: 95	: 4	: 3.4	:
Arequipa	:	:	: 1	: 6	: 1	: .2	:
Iquitos	:	:	:	: 2	:	:	:
<u>URUGUAY</u>	:	:	:	:	:	:	:
Montevideo	: 5	: 17	: 21	: 83	: 1	: .5	:
<u>VENEZUELA</u>	:	:	:	:	:	:	:
Caracas	: 7	: 23	: 18	: 76	: 4	: 2.6	:
La Guaira	: 1	: 3	: 1	: 5	: 1	: .2	:
Maracaibo	: 2	: 6	: 2	: 9	: 2	: .5	:
Puerto de la Cruz	:	:	: 1	: 3	: 1	: .5	:
TOTAL AMERICAN REPUBLICS	: 231	: 742	: 474	: 2133	: 161	: 88.4	:

Total Personnel 10/1/39	Officers 4/1/45	Total Personnel 4/1/45	Consular Officers 4/1/45	Man Years on Cons. Functions 4/1/45	Estimates for Liberated Areas	Officers 1947	TOTAL Clerks 1947
6	2	6	2	1.0		1.	2.
						.5	1.5
11	7	37	1	.4		.5	1.5
						4.0	5.5
13							
14	22	95	4	3.4		3.8	4.8
	1	6	1	.2		.2	.7
		2					
						.5	3.
17	21	83	1	.5		.5	3.
						4.	10.5
23	18	76	4	2.6		2.8	7.
3	1	5	1	.2		.2	.6
6	2	9	2	.5		.5	2.4
	1	3	1	.5		.5	.5
742	474	2133	161	88.4		97.0	237.0

	Officers 10/1/39	Total Personnel 10/1/39	Officers 4/1/45	Total Personnel 4/1/45	Consular Officers 4/1/45	Man Years on Cons. Functions 4/1/45	Esti Li
<u>BRITISH COMMONWEALTH, EM- PIRE AND POSSESSIONS</u>							
<u>AUSTRALIA</u>							
Canberra			3	14		.2	
Adelaide	1	3	1	4	1	.6	
Brisbane	1	4	3	11	3	1.4	
Melbourne	4	11	4	13	3	2.1	
Perth	1	3	2	5	2	.8	
Sydney	7	23	9	33	2	1.5	
<u>CANADA</u>							
Ottawa	11	43	12	48	2	1.0	
Calgary	1	3	1	3	1	.3	
Edmonton	1	3	2	6	2	.6	
Ft. William & Port Arthur	1	4	1	4	1	.7	
Fredericton	1	2	1	4	1	.4	
Halifax	4	9	4	10	4	2.75	
Hamilton	2	5	2	9	2	.6	
London	1	3					
Montreal	10	22	13	37	8	6.2	
Niagara Falls	4	8	2	11	2	1.6	
Quebec	2	6	2	5	2	.6	
Regina	2	5	2	6	2	.8	
St. John	2	6	2	8	2	.8	
St. Stephen	1	3	1	4	1	.3	
Sarnia			1	6	1	.7	
Toronto	8	21	8	28	5	3.3	
Vancouver	7	14	6	18	5	3.7	
Victoria	1	3	2	5	2	.8	
Windsor	4	12	4	15	4	3.3	
Winnipeg	4	10	2	13	2	1.2	
Yarmouth	2	5					

Total Personnel 10/1/39	Officers 4/1/45	Total Personnel 4/1/45	Consular Officers 4/1/45	Man Years on Cons. Functions 4/1/45	Estimates for Liberated Areas	Officers 1947	TOTAL Clerks 1947
:	:	:	:	:	:	:	:
:	:	:	:	:	:	:	:
:	:	:	:	:	:	12.5	46.5
:	:	:	:	:	:	:	:
:	:	:	:	:	:	:	:
:	3	14	:	.2	:	.2	.5
3	1	4	1	.6	:	1.	4.
4	3	11	3	1.4	:	1.5	4.5
11	4	13	3	2.1	:	4.	15.
3	2	5	2	.8	:	.8	2.5
23	9	33	2	1.5	:	5.	20.
:	:	:	:	:	:	:	:
:	:	:	:	:	:	32.	92.5
:	:	:	:	:	:	:	:
43	12	48	2	1.0	:	1.	3.5
3	1	3	1	.3	:	.3	1.2
3	2	6	2	.6	:	.6	2.3
4	1	4	1	.7	:	.7	1.5
2	1	4	1	.4	:	.4	1.
9	4	10	4	2.75	:	2.	4.
5	2	9	2	.6	:	.6	3.
3	:	:	:	:	:	:	:
22	13	37	8	6.2	:	7.2	18.
8	2	11	2	1.6	:	1.6	5.1
6	2	5	2	.6	:	.6	1.5
5	2	6	2	.8	:	.8	2.5
6	2	8	2	.8	:	.8	2.8
3	1	4	1	.3	:	.3	1.4
:	1	6	1	.7	:	.7	3.1
21	8	28	5	3.3	:	4.3	16.
14	6	18	5	3.7	:	4.3	10.
3	2	5	2	.8	:	.8	1.6
12	4	15	4	3.3	:	3.3	7.
10	2	13	2	1.2	:	1.2	6.
5	:	:	:	:	:	.5	1.

	: :Officers : 10/1/39	: :Personnel : 10/1/39	: :Total : 4/1/45	: :Officers : 4/1/45	: :Personnel : 4/1/45	: :Total : 4/1/45	: :Consular : Officers : 4/1/45	: :Man Years on : Cons.Functions : 4/1/45	: :Esti : Li
<u>GREAT BRITAIN AND</u>									
<u>NORTHERN IRELAND</u>									
London	30	158	48	276	7	7.1			
Belfast	3	11	3	13	2	.9			
Birmingham	2	7	2	7	2	1.1			
Bradford	2	7	1	6	1	.2			
Bristol	1	3	2	4	2	1.4			
Cardiff	1	4	1	4	1	.5			
Edinburgh	2	5	2	5	2	1.3			
Glasgow	4	16	2	13	2	.8			
Hull	1	3	2	5	2	1.2			
Liverpool	4	12	3	14	3	1.2			
Manchester	1	7	2	10	2	.9			
Newcastle-on-Tyne	1	4	1	5	1	.7			
Plymouth	2	7	1	5	1	.4			
Southampton	3	8	1	5	1	.3			
Sheffield	2	5							
Dundee	1	2							
<u>INDIA</u>									
New Delhi			6	46	2	1.8			
Bombay	4	18	6	37	5	2.7			
Calcutta	7	36	7	43	4	2.2			
Karachi	2	8	2	15	2	.9			
Madras	2	10	2	11	2	.5			
<u>IRELAND</u>									
Dublin	5	22	5	31	3	1.9			
Cork	2	10	2	10	2	.8			
Foynes			1	5	1	.5			

: Total :		: Total :		: Consular :		: Man Years on :		: Estimates for:		: TOTAL :	
: Personnel :	: Officers :	: Personnel:	: Officers:	: Officers :	: Cons. Functions:	: Liberated :	: Areas :	: Officers :	: Clerks :	: 1947 :	: 1947 :
: 10/1/39 :	: 4/1/45 :	: 4/1/45 :	: 4/1/45 :	: 4/1/45 :	: 4/1/45 :	: 4/1/45 :	: 4/1/45 :	: 1947 :	: 1947 :	: 1947 :	: 1947 :
:	:	:	:	:	:	:	:	:	:	:	:
:	:	:	:	:	:	:	:	29.	:	114.	:
:	:	:	:	:	:	:	:	:	:	:	:
158	48	276	7	7	7.1	:	:	15.5	:	75.	:
11	3	13	2	2	.9	:	:	1.	:	5.	:
7	2	7	2	2	1.1	:	:	1.4	:	4.	:
7	1	6	1	1	.2	:	:	.5	:	2.5	:
3	2	4	2	2	1.4	:	:	1.5	:	2.	:
4	1	4	1	1	.5	:	:	.6	:	1.5	:
5	2	5	2	2	1.3	:	:	1.5	:	2.	:
16	2	13	2	2	.8	:	:	1.	:	5.1	:
3	2	5	2	2	1.2	:	:	1.5	:	2.	:
12	3	14	3	3	1.2	:	:	1.5	:	5.6	:
7	2	10	2	2	.9	:	:	1.1	:	4.	:
4	1	5	1	1	.7	:	:	.9	:	2.	:
7	1	5	1	1	.4	:	:	.5	:	1.2	:
8	1	5	1	1	.3	:	:	.5	:	2.1	:
5	:	:	:	:	:	:	:	:	:	:	:
2	:	:	:	:	:	:	:	:	:	:	:
:	:	:	:	:	:	:	:	7.	:	18.5	:
:	:	:	:	:	:	:	:	:	:	:	:
:	6	46	2	2	1.8	:	:	.7	:	.5	:
18	6	37	5	5	2.7	:	:	2.7	:	6.	:
36	7	43	4	4	2.2	:	:	2.2	:	6.5	:
8	2	15	2	2	.9	:	:	.9	:	2.5	:
10	2	11	2	2	.5	:	:	.5	:	3.	:
:	:	:	:	:	:	:	:	:	:	:	:
:	:	:	:	:	:	:	:	4.	:	12.	:
:	:	:	:	:	:	:	:	:	:	:	:
22	5	31	3	3	1.9	:	:	2.2	:	7.	:
10	2	10	2	2	.8	:	:	1.	:	4.	:
:	1	5	1	1	.5	:	:	.8	:	1.	:

	: :Officers : 10/1/39	: : Total : Personnel : 10/1/39	: : Officers : 4/1/45	: : Total : Personnel : 4/1/45	: : Consular : Officers : 4/1/45	: : Man Years on : Cons. Functions : 4/1/45	: : Estim : Lib : Ar
<u>NEW ZEALAND</u>							
Wellington	: 3	: 9	: 6	: 29	: 1	: 1.0	:
Auckland	: 1	: 3	: 2	: 5	: 2	: .9	:
<u>UNION OF SOUTH AFRICA</u>							
Pretoria	: 2	: 7	: 5	: 25	:	:	:
Capetown	: 2	: 7	: 3	: 10	: 2	: 1.1	:
Durban	: 2	: 5	: 1	: 6	: 1	: .3	:
Johannesburg	: 6	: 14	: 4	: 15	: 3	: 1.6	:
Port Elizabeth	: 1	: 2	: 2	: 4	: 2	: .75	:
<u>EUROPE</u>							
Gibraltar	: 2	: 6	: 2	: 8	: 2	: .9	:
Malta	: 1	: 5	:	:	:	:	:
<u>ASIA</u>							
Aden	: 2	: 6	: 2	: 8	: 2	: .6	:
Colombo, Ceylon	: 2	: 9	: 4	: 14	: 3	: .7	:
Hongkong	: 5	: 24	:	:	:	:	:
Rangoon	: 2	: 10	:	:	:	:	:
Singapore	: 6	: 18	:	:	:	:	:
Suva	:	:	: 1	: 4	: 1	: .1	:
<u>AFRICA</u>							
Accra	:	:	: 3	: 12	: 2	: 1.0	:
Freetown	:	:	:	:	:	:	:
Lagos	: 3	: 10	: 5	: 18	: 2	: 1.4	:
Mombasa	:	:	: 2	: 6	: 2	: .7	:
Nairobi	: 2	: 8	: 4	: 15	: 3	: 1.6	:

Total Personnel 10/1/39	Officers 4/1/45	Total Personnel 4/1/45	Consular Officers 4/1/45	Man Years on Cons. 4/1/45	Estimates for: Liberated Areas	Officers 1947	TOTAL Clerks 1947
						2.5	7.
9	6	29	1	1.0		1.5	5.
3	2	5	2	.9		1.	2.
						4.	8.
7	5	25					2.
7	3	10	2	1.1		1.1	1.
5	1	6	1	.3		.5	1.8
14	4	15	3	1.6		1.6	2.2
2	2	4	2	.75		.8	1.
						2.	3.
6	2	8	2	.9		1.	1.5
5						1.	1.5
						16.	32.
6	2	8	2	.6		.5	.5
9	4	14	3	.7		.5	1.
24						8.9	18.
10						.5	1.
18						5.	10.
	1	4	1	.1		.1	.5
						5.	5.5
	3	12	2	1.0		1.	.5
						.2	.5
10	5	18	2	1.4		1.5	2.
	2	6	2	.7		.7	1.
8	4	15	3	1.6		1.6	1.5

	: : Officers : 10/1/39	: : Personnel : 10/1/39	: : Total : 4/1/45	: : Officers : 4/1/45	: : Personnel : 4/1/45	: : Total : 4/1/45	: : Consular : Officers : 4/1/45	: : Man Years on : Cons. Functions : 4/1/45	: : Estim : Lib
<u>AMERICAS</u>									
Antigua			1		4		1	.4	
Barbados	2	7	2		7		2	.7	
Belize	1	4	2		6		2	.8	
Georgetown			2		7		1	.4	
Hamilton	2	5	3		11		3	1.7	
Kingston	2	8	5		15		3	1.8	
Nassau	3	6	2		5		2	1.0	
Port of Spain	2	7	3		11		3	1.3	
St. Johns	2	5	4		11		3	1.4	
St. George's			1		5		1	.2	
TOTAL BRITISH COMMON- WEALTH, EMPIRE AND POSSESSIONS	222	787	263		1151		159	87.9	

Total Personnel 10/1/39	Officers 4/1/45	Total Personnel 4/1/45	Consular Officers 4/1/45	Man Years on Cons.Functions 4/1/45	Estimates for: Liberated Areas	Officers 1947	TOTAL Clerks 1947
						10.	19.5
	1	4	1	.4		.4	1.2
7	2	7	2	.7		.7	1.
4	2	6	2	.8		.8	1.2
	2	7	1	.4		.4	.8
5	3	11	3	1.7		2.	3.2
8	5	15	3	1.8		1.8	4.3
6	2	5	2	1.0		1.2	1.5
7	3	11	3	1.3		1.3	3.1
5	4	11	3	1.4		1.2	2.6
	1	5	1	.2		.2	.6
787	263	1151	159	87.9		124.	358.5

	: :Officers : 10/1/39	: : Total : Personnel : 10/1/39	: : Officers : 4/1/45	: : Total : Personnel : 4/1/45	: : Consular : Officers : 4/1/45	: : Man Years on : Cons. Functions : 4/1/45	: : Es
<u>EUROPE</u>	:	:	:	:	:	:	:
<u>ALBANIA</u>	:	:	:	:	:	:	:
Tirana	:	:	:	:	:	:	:
<u>AUSTRIA</u>	:	:	:	:	:	:	:
Vienna	: 8	: 37	: 14	: 20	: 2	: 2.0	:
<u>BELGIUM</u>	:	:	:	:	:	:	:
Brussels	: 10	: 31	: 9	: 48	: 1	: 1.15	:
Antwerp	: 5	: 23	: 8	: 23	: 3	: 2.1	:
<u>BELGIUM POSSESSIONS</u>	:	:	:	:	:	:	:
Leopoldville	: 1	: 5	: 2	: 10	: 1	: .45	:
Elizabethville	:	:	:	:	:	:	:
<u>BULGARIA</u>	:	:	:	:	:	:	:
Sofia	: 3	: 15	: 3	: 15	: 1	: .6	:
<u>CZECHOSLOVAKIA</u>	:	:	:	:	:	:	:
Praha	: 5	: 39	: See	: Poland	:	:	:
<u>DENMARK</u>	:	:	:	:	:	:	:
Copenhagen	: 7	: 29	:	:	:	:	:
<u>DENMARK POSSESSIONS</u>	:	:	:	:	:	:	:
Godthaab	:	:	: 1	: 2	: 1	: .05	:

Total Personnel 10/1/39	Officers 4/1/45	Total Personnel 4/1/45	Consular Officers 4/1/45	Man Years on Cons.Functions 4/1/45	Estimates for: Liberated Areas	Officers 1947	TOTAL Clerks 1947
						1.	.5
					1	1.	.5
						6.	12.
37	14	20	2	2.0	5	6.	12.
						8.	20.
31	9	48	1	1.15	4	4.	10.
23	8	23	3	2.1	3	4.	10.
						1.5	3.5
5	2	10	1	.45		.5	1.5
						1.	2.
						3.	5.
15	3	15	1	.6	3	3.	5.
						8.	12.
39	See Poland				7	8.	12.
						4.	6.
29					4	4.	6.
	1	2	1	.05			

	Officers 10/1/39	Total Personnel 10/1/39	Officers 4/1/45	Total Personnel 4/1/45	Consular Officers 4/1/45	Man Years on Cons.Functions 4/1/45	Estimate Lib
<u>FINLAND</u>							
Helsinki	4	21	2	17			
<u>FRANCE</u>							
Paris	27	152	46	236	7	5.8	
Marseille	5	15	6	18	4	2.2	
Nantes	1	5					
Nice	2	7	2	10	2	.6	
Strasbourg		2					
Lille	2	5					
LeHavre	3	6	2	6	2	.6	
Bordeaux	5	17	3	13	2	1.0	
Lyon	2	5					
Cherbourg	1	6	2	5	2	.8	
Calais	1	5					
<u>FRENCH POSSESSIONS</u>							
Algiers	2	7	10	32	4	2.2	
Brazzaville			2	9	2	.2	
Casablanca	2	9	5	21	3	1.5	
Dakar			4	13	2	.5	
Hanoi							
Martinique			2	8	2	.6	
Noumea			2	4	2	1.0	
Rabat			2	9	2	.1	
Oran			3	9	3	2.1	
Saigon	3	9					
St. Pierre		2					
Tahiti	2	5	2	6	2	.5	
Tananarive			2	12	2	1.25	
Tunis	2	7	3	13	1	.5	

: Total : Personnel : 10/1/39	: Officers : 4/1/45	: Total : Personnel : 4/1/45	: Consular : Officers : 4/1/45	: Man Years on : Cons. Functions : 4/1/45	: Estimates for: : Liberated : Areas	: TOTAL	
						: Officers : 1947	: Clerks : 1947
:	:	:	:	:	:	:	:
:	:	:	:	:	:	3.	8.
:	:	:	:	:	:	:	:
21	2	17	:	:	3	3.	8.
:	:	:	:	:	:	:	:
:	:	:	:	:	:	26.	66.
:	:	:	:	:	:	:	:
152	46	236	7	5.8	9	10.	30.
15	6	18	4	2.2	3	5.	12.
5	:	:	:	:	:	:	:
7	2	10	2	.6	1	2.	6.
2	:	:	:	:	2	2.	4.
5	:	:	:	:	:	:	:
6	2	6	2	.6	1	1.	2.
17	3	13	2	1.0	1	1.	2.
5	:	:	:	:	2	2.	4.
6	2	5	2	.8	2	2.	4.
5	:	:	:	:	1	1.	2.
:	:	:	:	:	:	:	:
:	:	:	:	:	:	12.5	15.
:	:	:	:	:	:	:	:
7	10	32	4	2.2	:	2.2	2.5
:	2	9	2	.2	:	.2	.3
9	5	21	3	1.5	:	1.5	3.2
:	4	13	2	.5	:	.5	.5
:	:	:	:	:	:	1.	2.
:	2	8	2	.6	:	.6	1.
:	2	4	2	1.0	:	1.	.5
:	2	9	2	.1	:	.1	.2
:	3	9	3	2.1	:	2.1	1.4
9	:	:	:	:	:	1.	.6
2	:	:	:	:	:	:	:
5	2	6	2	.5	:	.5	.5
:	2	12	2	1.25	:	1.3	1.5
7	3	13	1	.5	:	.5	.8

	: :Officers : 10/1/39	: :Personnel : 10/1/39	: :Officers : 4/1/45	: :Personnel : 4/1/45	: :Consular : 4/1/45	: :Man Years on :Cons.Functions : 4/1/45	: :Esti : L
<u>GERMANY</u>							
Berlin	: 21	: 108	: 36	: 59	: 12	: 12.	:
Bromen	: 3	: 14	:	:	:	:	:
Breslau	:	:	:	:	:	:	:
Cologne	: 3	: 13	:	:	:	:	:
Dresden	: 3	: 14	:	:	:	:	:
Frankfurt	: 3	: 11	:	:	:	:	:
Hamburg	: 7	: 26	:	:	:	:	:
Leipzig	: 4	: 15	:	:	:	:	:
Munich	: 3	: 13	:	:	:	:	:
Stuttgart	:	:	:	:	:	:	:
<u>GREECE</u>							
Athens	: 8	: 47	: 18	: 89	: 7	: 5.6	:
Salonika	: 2	: 9	: 3	: 16	: 2	: 1.25	:
Patras	:	:	:	:	:	:	:
<u>HUNGARY</u>							
Budapest	: 7	: 27	: 12	: 52	: 3	: 3.0	:
<u>ICELAND</u>							
Reykjavik	:	:	: 5	: 16	: 3	: 1.5	:
<u>ITALY</u>							
Rome	: 10	: 48	: 23	: 91	: 6	: 3.2	:
Naples	: 9	: 49	: 8	: 36	: 7	: 5.7	:
Milan	: 4	: 14	:	:	:	:	:
Genoa	: 3	: 12	:	:	:	:	:

Total Personnel 10/1/39	Officers 4/1/45	Total Personnel 4/1/45	Consular Officers 4/1/45	Man Years on Cons. Functions 4/1/45	Estimates for: Liberated Areas	Officers 1947	TOTAL Clerks 1947
						26.	76.
108	36	59	12	12.		15.	45.
14						1.	3.
						2.	4.
13						1.	3.
14						1.	3.
11						1.	3.
26						2.	6.
15						1.	3.
13						1.	3.
						17.	41.
47	18	89	7	5.6	8	9.	23
9	3	16	2	1.25	5	5.	12.
					3	3.	6.
						4.	10.
27	12	52	3	3.0		4.	10.
						1.5	1.5
	5	16	3	1.5		1.5	1.5
						31.	63.
48	23	91	6	3.2	5	5.	10.
49	8	36	7	5.7	6	8.	16.
14					2	3.	6.
12					3	4.	8.

	: :Officers : 10/1/39	: Total : Personnel : 10/1/39	: :Officers : 4/1/45	: Total : Personnel : 4/1/45	: Consular : Officers : 4/1/45	: Man Years on : Cons.Functions : 4/1/45	:Esti : Li
Leghorn	: 2	: 6	: :	: :	: :	: :	: :
Palermo	: 3	: 14	: 4	: 14	: 3	: 1.9	: :
Florence	: 3	: 9	: 2	: 11	: 2	: 1.1	: :
Trieste	: 2	: 7	: :	: :	: :	: :	: :
Turin	: 2	: 7	: :	: :	: :	: :	: :
Venice	: 2	: 6	: :	: :	: :	: :	: :
Vatican City	: :	: :	: 2	: 12	: :	: :	: :
<u>LUXEMBOURG</u>	: :	: :	: :	: :	: :	: :	: :
Luxembourg	: :	: 3	: 1	: 7	: :	: .1	: :
<u>NETHERLANDS</u>	: :	: :	: :	: :	: :	: :	: :
The Hague	: 4	: 18	: 6	: 18	: 1	: 1.0	: :
Amsterdam	: 4	: 15	: :	: :	: :	: :	: :
Rotterdam	: 5	: 19	: :	: :	: :	: :	: :
<u>NETHERLANDS POSSESSIONS</u>	: :	: :	: :	: :	: :	: :	: :
Batavia	: 5	: 23	: :	: :	: :	: :	: :
Balikpapan	: :	: :	: :	: :	: :	: :	: :
Curacao	: 1	: 4	: 2	: 7	: 2	: 1.2	: :
Macassar	: :	: :	: :	: :	: :	: :	: :
Aruba	: :	: :	: 2	: 7	: 2	: 1.1	: :
Medan	: 1	: 6	: :	: :	: :	: :	: :
Palembang	: :	: :	: :	: :	: :	: :	: :
Paramaribo	: :	: :	: 2	: 6	: 2	: .75	: :
Surabaya	: 2	: 9	: :	: :	: :	: :	: :
<u>NORWAY</u>	: :	: :	: :	: :	: :	: :	: :
Oslo	: 5	: 28	: 4	: 12	: :	: :	: :

Personnel	Officers	Total Personnel	Consular Officers	Man Years on Cons. Functions	Estimates for: Liberated Areas	Officers 1947	Clerks 1947	TOTAL
6								
14	4	14	3	1.9	3	3.	7.	
9	2	11	2	1.1	2	3.	6.	
7					2	2.	4.	
7					2	2.	4.	
6						1.	2.	
	2	12						
						.1		
3	1	7		.1		.1		
						10.	20.	
18	6	18	1	1.0	1	1.	2.	
15					3	4.	8.	
19					4	5.	10.	
						6.5	9.	
23						1.5	3.	
						.5		
4	2	7	2	1.2		1.2	2.4	
						.5		
6	2	7	2	1.1		.5	1.	
						.5		
	2	6	2	.75		.8	.6	
9						1.	2.	
						7.	14.	
28	4	12			4	4.	8.	

	: :Officers : 10/1/39	: :Total : Personnel : 10/1/39	: :Officers : 4/1/45	: :Total : Personnel : 4/1/45	: :Consular : Officers : 4/1/45	: :Man Years on : Cons.Functions : 4/1/45	: :Est : 1
Bergen	: 2	: 7	:	:	:	:	:
Stavanger	:	:	:	:	:	:	:
Trondhjem	:	:	:	:	:	:	:
<u>POLAND</u>							
Warsaw	: 14	: 54	: 8	: 15	: 4	: 4.0	:
(Danzig)	: 2	: 6	:	:	:	:	:
<u>PORTUGAL</u>							
Lisbon	: 4	: 22	: 19	: 90	: 4	: 3.3	:
Angra de Heroismo	:	:	: 2	: 4	:	: .3	:
Funchal	: 1	: 3	: 1	: 4	: 1	: .4	:
Oporto	: 2	: 6	: 1	: 6	: 1	: .4	:
Punta Delgado	: 2	: 7	: 2	: 6	:	: .45	:
Horta	:	:	: 2	: 8	:	: .7	:
<u>PORTUGAL POSSESSIONS</u>							
Beira Mozambique	:	:	: 2	: 6	: 2	: .4	:
Lourenco Marques	: 1	: 6	: 2	: 8	: 2	: .3	:
Luanda	:	:	: 1	: 6	: 1	: .1	:
<u>RUMANIA</u>							
Bucharest	: 8	: 42	: 4	: 25	: 1	: .6	:
<u>SPAIN AND POSSESSIONS</u>							
Madrid	: 7	: 35	: 24	: 124	: 2	: 2.1	:
Barcelona	: 4	: 20	: 8	: 24	: 4	: 2.6	:
Bilbao	: 1	: 2	: 2	: 10	: 1	: .4	:
Las Palmas	: 1	: 4	: 1	: 7	: 1	: .1	:

: Total : Personnel : 10/1/39	: Officers : 4/1/45	: Total : Personnel : 4/1/45	: Consular : Officers : 4/1/45	: Man Years on : Cons. Functions : 4/1/45	: Estimates for : Liberated : Areas	: TOTAL	
						: Officers : 1947	: Clerks : 1947
:	:	:	:	:	:	:	:
:	:	:	:	:	:	:	:
7	:	:	:	:	1	1.	2.
:	:	:	:	:	1	1.	2.
:	:	:	:	:	1	1.	2.
:	:	:	:	:	:	14.	30.
:	:	:	:	:	:	14.	30.
54	8	15	4	4.0	12	14.	30.
6	:	:	:	:	:	5.5	14.
:	:	:	:	:	:	3.3	7.8
22	19	90	4	3.3	:	.3	1.2
:	2	4	:	.3	:	.4	1.6
3	1	4	1	.4	:	.4	1.4
6	1	6	1	.4	:	.4	1.2
7	2	6	:	.45	:	.7	.8
:	2	8	:	.7	:	:	:
:	:	:	:	:	:	.5	1.
:	2	6	2	.4	:	:	:
6	2	8	2	.3	:	.4	.8
:	1	6	1	.1	:	.1	.2
:	:	:	:	:	:	5.5	20.
:	4	25	1	.6	5	5.5	20.
42	:	:	:	:	:	10.5	15.5
:	:	:	:	:	:	2.1	3.
35	24	124	2	2.1	:	3.5	4.
20	8	24	4	2.6	:	.4	1.8
2	2	10	1	.4	:	.1	.3
4	1	7	1	.1	:	:	:

	Officers 10/1/39	Total Personnel 10/1/39	Officers 4/1/45	Total Personnel 4/1/45	Consular Officers 4/1/45	Man Years on Cons. Functions 4/1/45	Esti Li
Malaga	1	5	2	7	2	.4	
San Sebastian			1	3	1	.4	
Seville	3	10	3	14	3	.9	
Tenerife	1	5	3	9	2	1.0	
Valencia	1	7	2	7	2	.5	
Vigo	1	6	5	11	5	1.25	
<u>SWEDEN</u>							
Stockholm	8	31	23	151	2	1.7	
Goteborg	2	11	3	14	2	.75	
Malmo			2	4	1	.2	
<u>SWITZERLAND</u>							
Bern	4	16	19	96	3	1.6	
Basel	2	6	3	10	2	.7	
Geneva	6	18	3	14	2	1.4	
Zurich	8	22	9	32	3	1.7	
<u>U. S. S. R.</u>							
Moscow	8	59	25	100	4	3.9	
Vladivostok			2	13	2	1.0	
Riga	4	39					
Kaunas	2	12					
Tallin	3	11					
<u>YUGOSLAVIA</u>							
Belgrade	5	18	8	30	3	3.0	
Zagreb	2	12					
TOTAL EUROPE AND EUROPEAN POSSESSIONS	352	1595	459	1870	168	103.75	

: Total : Personnel : 10/1/39	: Officers : 4/1/45	: Total : Personnel : 4/1/45	: Consular : Officers : 4/1/45	: Man Years on : Cons. Functions : 4/1/45	: Estimates for: : Liberated : Areas	TOTAL	
						: Officers : 1947	: Clerks : 1947
:	:	:	:	:	:	:	:
5	2	7	2	.4		.4	1.
:	1	3	1	.4		.4	.5
10	3	14	3	.9		.9	1.
5	3	9	2	1.0		1.	1.3
7	2	7	2	.5		.5	.6
6	5	11	5	1.25		1.2	2.
:	:	:	:	:	:	:	:
:	:	:	:	:	:	3.	7.
31	23	151	2	1.7		1.8	3.2
11	3	14	2	.75		1.	3.
:	2	4	1	.2		.2	.8
:	:	:	:	:	:	:	:
16	19	96	3	1.6		1.7	3.5
6	3	10	2	.7		.7	2.
18	3	14	2	1.4		1.4	2.
22	9	32	3	1.7		1.7	3.5
:	:	:	:	:	:	:	:
:	:	:	:	:	:	8.5	12.0
59	25	100	4	3.9		4.	4.
:	2	13	2	1.0		1.5	2.
39	:	:	:	:		1.	2.
12	:	:	:	:		1.	2.
11	:	:	:	:		1.	2.
:	:	:	:	:		9.	12.
:	:	:	:	:		:	:
18	8	30	3	3.0	6	6.	8.
12	:	:	:	:	3	3.	4.
:	:	:	:	:	:	:	:
1595	459	1870	168	103.75	134	238.1	505.

	Officers 10/1/39	Total Personnel 10/1/39	Officers 4/1/45	Total Personnel 4/1/45	Consular Officers 4/1/45	Man Years on Cons.Functions 4/1/45	Esti Li
<u>AFRICA AND MIDDLE EAST</u>							
<u>AFGHANISTAN</u>							
Kabul			2	21		.1	
<u>EGYPT</u>							
Cairo	6	20	25	94	4	2.8	
Alexandria	2	10	3	12	3	1.4	
Port Said	2	10	1	7	1	.3	
Suez			1	7	1	.7	
<u>ETHIOPIA</u>							
Addis Ababa			3	28	1	.8	
<u>IRAN</u>							
Tehran	3	25	9	50	3	1.2	
Tabriz			1	6	1	.2	
<u>IRAQ</u>							
Baghdad	5	18	3	25	1	.2	
Basra			2	10	2	.6	
<u>LEBANON</u>							
Beirut	3	18	5	35	2	1.7	
<u>LIBERIA</u>							
Monrovia	1	8	2	16	1	.5	

Total Personnel 10/1/39:	Officers 4/1/45	Total Personnel 4/1/45	Consular Officers 4/1/45	Man Years on Cons.Functions 4/1/45	Estimates for: Liberated Areas	TOTAL	
						Officers 1947	Clerks 1947
						.1	
	2	21		.1		.1	
						6.5	19.
20	25	94	4	2.8		3.	9.
10	3	12	3	1.4		2.5	8.
10	1	7	1	.3		.3	1.
	1	7	1	.7		.7	1.
						1.	.5
	3	28	1	.8		1.	.5
						1.5	2.
25	9	50	3	1.2		1.3	1.7
	1	6	1	.2		.2	.3
						1.	2.
18	3	25	1	.2		.4	.8
	2	10	2	.6		.6	1.2
						2.5	5.5
18	5	35	2	1.7		2.5	5.5
						.5	1.
8	2	16	1	.5		.5	1.

	Officers:	Total Personnel:	Officers:	Total Personnel:	Consular Officers:	Man Years on Cons. Functions:	Estimated Liab.
	10/1/39:	10/1/39:	4/1/45:	4/1/45:	4/1/45:	4/1/45:	
<u>PALESTINE AND TRANS-JORDAN</u>							
Jerusalem	5	20	6	22	4	1.8	
<u>SAUDI ARABIA</u>							
Jidda			4	21	1	.3	
Dahren			2	2	2	.6	
Bahrein							
<u>SYRIA</u>							
Damascus			3	15	2	.8	
<u>TURKEY</u>							
Ankara	4	10	9	57	1	.5	
Adana			1	4	1	.05	
Istanbul	2	40	6	46	3	1.5	
Iskenderun			2	7	2	.1	
Izmir	2	8	2	11	2	1.25	
<u>MOROCCO</u>							
Tangier	2	16	6	35	1	.6	
TOTAL AFRICA AND MIDDLE EAST	37	203	98	531	39	18.	

Total Personnel 10/1/39	Officers 4/1/45	Total Personnel 4/1/45	Consular Officers 4/1/45	Man Years on 4/1/45	Estimates for: Liberated Areas	TOTAL		67
						Officers 1947	Clerks 1947	
						2.5	5.	
20	6	22	4	1.8		2.5	5.	
						3.	2.	
	4	21	1	.3		.4	.5	
	2	2	2	.6		.6		
						2.	1.5	
						1.5	1.	
	3	15	2	.8		1.5	1.	
						3.5	6.	
10	9	57	1	.5		.5	.5	
	1	4	1	.05		.1		
40	6	46	3	1.5		1.5	3.5	
	2	7	2	.1		.1		
8	2	11	2	1.25		1.3	2.	
						.5	1.	
16	6	35	1	.6		.5	1.	
203	98	531	39	18.		24.1	45.	

	Officers:	Total Personnel:	Officers:	Total Personnel:	Consular Officers:	Man Years on Cons. Functions:	Est
	10/1/39:	10/1/39:	4/1/45:	4/1/45:	4/1/45:	4/1/45:	
<u>EASTERN ASIA</u>							
<u>CHINA</u>							
Amoy	2	16					
Chungking		13	25	70	6	4.25	
Canton	6	20					
Chefoo	1	9					
Foochow	1	14		4			
Hangkow	5	21					
Harbin	3	12					
Kunming (Yunnanfu)	2	13	4	13	4	1.2	
Nanking	3	17					
Mukden	2	13					
Peiping	10	47					
Shanghai	25	98					
Swatow	1	8					
Tientsin	8	26					
Tihwa			1	3	1	.15	
Tsingtao	2	9					
Tsinan	1	9					
<u>PHILIPPINE ISLANDS</u>							
Manila	3	13	7	21	6	5.25	
Cebu							
Zamboanga							
<u>JAPAN</u>							
Tokyo	19	73					
Dairen	2	8					

39	Total Personnel		Total Personnel		Man Years on Cons. Functions		Estimates for Liberated Areas		TOTAL	
	10/1/39	Officers 4/1/45	4/1/45	Officers 4/1/45	4/1/45	4/1/45	1947	1947	Officers 1947	Clerks 1947
									21.5	103.5
16								.5		2.5
13	25		70	6		4.25		4.3		20.
20								2.		10.
9								.5		2.5
14			4					.5		2.5
21								2.		10.
12								1.		5.
13	4		13	4		1.2		1.2		5.
17										
13								.5		2.5
47										
98								5.		25.
8								.5		2.5
26								2.3		10.
	1		3	1		.15		.2		1.
9								.5		2.5
9								.5		2.5
									8.5	6.
13	7		21	6		5.25		6.3		4.
								1.1		1.
								1.1		1.
									11.1	37.0
73								5.0		25.
8								1.		2.

	Officers	Personnel	Officers	Personnel	Consular Officers	Man Years on Cons. Functions	Estimated Li
	10/1/39	10/1/39	4/1/45	4/1/45	4/1/45	4/1/45	
Kobe	5	18					
Nagasaki	1	9					
Nagoya	1	6					
Osaka	4	12					
Taihoku	1	5					
Yokahama	3	17					
<u>KOREA</u>							
Keijo	2	12					
<u>THAILAND</u>							
Bangkok	3	19					
TOTAL EASTERN ASIA	116	537	37	111	17	10.85	

ESTIMATED NEEDS FOR ADMINISTRATIVE OFFICERS, ASSISTANTS AND CLERKS

FISCAL YEAR 1947

The estimate of personnel needed for the performance of the administrative function is based on data from available data by staff members of the Division. From the Personnel Inventory of April 1946, it was ascertained the total man years, both officer and clerk, being devoted to this function and the number of persons stationed at each foreign post.

It was assumed that the provisions of the Act of May 3, 1945 (Public Law 48) which provided for the payment of administrative personnel for the Foreign Service would be utilized to the fullest extent possible. Therefore, the first step in estimating the number of officers and clerks required for 1947 was to classify each post in one of five classes, depending upon its size and the importance of the administrative function to be performed, determined by the percentage of time devoted to the function. Secondly, the accompanying personnel requirements were drawn up for each class of post from which the calculation was made as to the number of officers and assistants required for each of five classes, as follows:

Class I	7 Officers
Class II	4 Officers
Class III	1 Officer (3 Assistants)
Class IV	1 Assistant
Class V	1 Senior Clerk

Finally, the assumption was made that this administrative personnel would, for the most part, be available during the time of the year.

the time

ESTIMATED NEEDS FOR ADMINISTRATIVE OFFICERS, ASSISTANTS AND CLERKS

70

FISCAL YEAR 1947

Personnel needed for the performance of the administrative function in 1947 was prepared by staff members of the Division. From the Personnel Inventory of April 1, 1945 there was one year, both officer and clerk, being devoted to this function and the number of personnel in foreign post.

Under the provisions of the Act of May 3, 1945 (Public Law 48) which provides for the employment of personnel for the Foreign Service would be utilized to the fullest extent practicable.

The basis in estimating the number of officers and clerks required for 1947 was to place each post in one of five classes, depending upon its size and the importance of the administrative function as measured by the percentage of time devoted to the function. Secondly, the accompanying organization charts show the class of post from which the calculation was made as to the number of administrative personnel required for each of five classes, as follows:

Class I	7 Officers
Class II	4 Officers
Class III	1 Officer
	(3 Assistants)
Class IV	1 Assistant
Class V	1 Senior Clerk

It was estimated that this administrative personnel would, for the most part, release

the time

the time of principal officers now engaged on the administrative function, except as such necessary supervision. Also, it was assumed that a great majority of the assistants would be experienced clerks and that such clerks would need to be replaced by new clerk appointments. If a post in Class III had, on April 1, 1945, the following distribution of man years on the function:

Principal Officer	1.50
Clerks	<u>10.00</u>
	11.50

the 1947 estimate, assuming no change, was arrived at on the basis of the following distribution:

Principal Officer	.50
Administrative Officer	1.00
Administrative Assistants	3.00
Clerks	<u>7.00</u>
	11.50

Provision for security officers is also included in this estimate of administrative man years as indicated in the distribution of duties as shown on the accompanying organizational charts. The distribution of these 108 security officers was received by the Division after the base was completed and no specific reference is made to this program in the functional grouping in the tables. The Office of Controls submitted to the Division complete justification for the details, because of their nature, have not been included in this report but will be available for review. It may be pointed out, however, that these officers will be entrusted with all

at their

Officers now engaged on the administrative function, except as such time relates to
Also, it was assumed that a great majority of the assistants would be drawn from
that such clerks would need to be replaced by new clerk appointments. For example,
had, on April 1, 1945, the following distribution of man years on the administrative

Principal Officer	1.50
Clerks	<u>10.00</u>
	11.50

ing no change, was arrived at on the basis of the following distribution:

Principal Officer	.50
Administrative Officer	1.00
Administrative Assistants	3.00
Clerks	<u>7.00</u>
	11.50

Security officers is also included in this estimate of administrative officers, as
portion of duties as shown on the accompanying organizational charts. Data regarding
the 108 security officers was received by the Division after the basic analyses were
In reference is made to this program in the functional grouping in the statistical
Controls submitted to the Division complete justification for the program, but the
nature, have not been included in this report but will be available for budgetary
outlined, however, that these officers will be entrusted with all elements of security
at their

at their respective posts and all other posts within the country or geographical area to which assigned. They will be given an intensive and highly technical training in all aspects of operations. They will provide and enforce the maximum security for the operations of the Foreign Service abroad.

and all other posts within the country or geographical area to which they are given an intensive and highly technical training in all aspects of security and the maximum security for the operations of the Foreign Service abroad.

Executive Officer
(FSO Class 1 or 2)
Consul General

CLASS I F

Administrative Officer
(FA)

Accounts
2 FA Officers

Personnel
1 FA Officer

Office Services
1 FA Officer

Mails and Files
1 FA Officer

Accounts and Returns
Reports and Records

Orientation
Leave
Holidays
Records and Reports
Investigations
Recruitment and
Placement

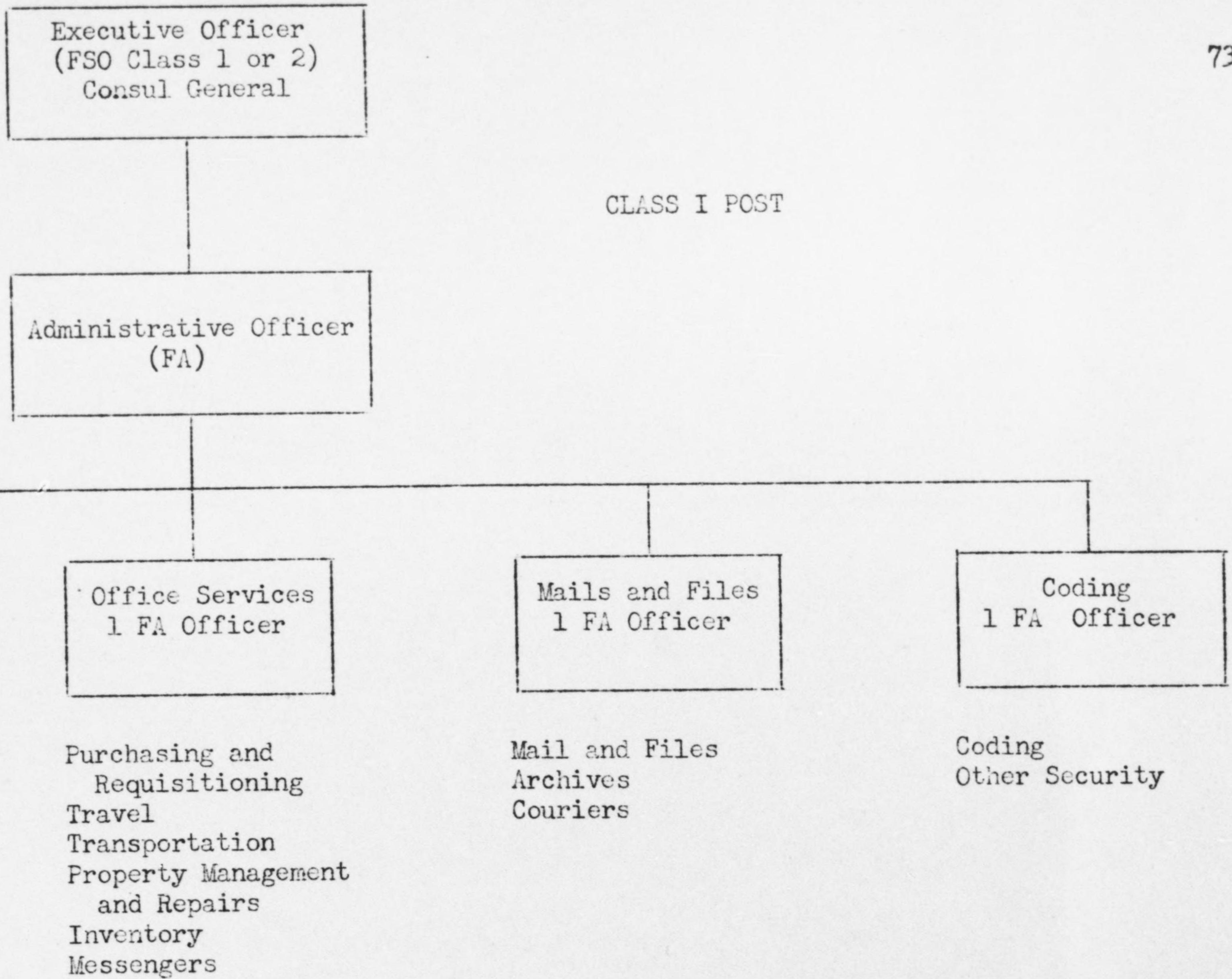
Purchasing and
Requisitioning
Travel
Transportation
Property Management
and Repairs
Inventory
Messengers

Mail and Files
Archives
Couriers

Administrative Organization for such Posts as:

London
Paris
Mexico

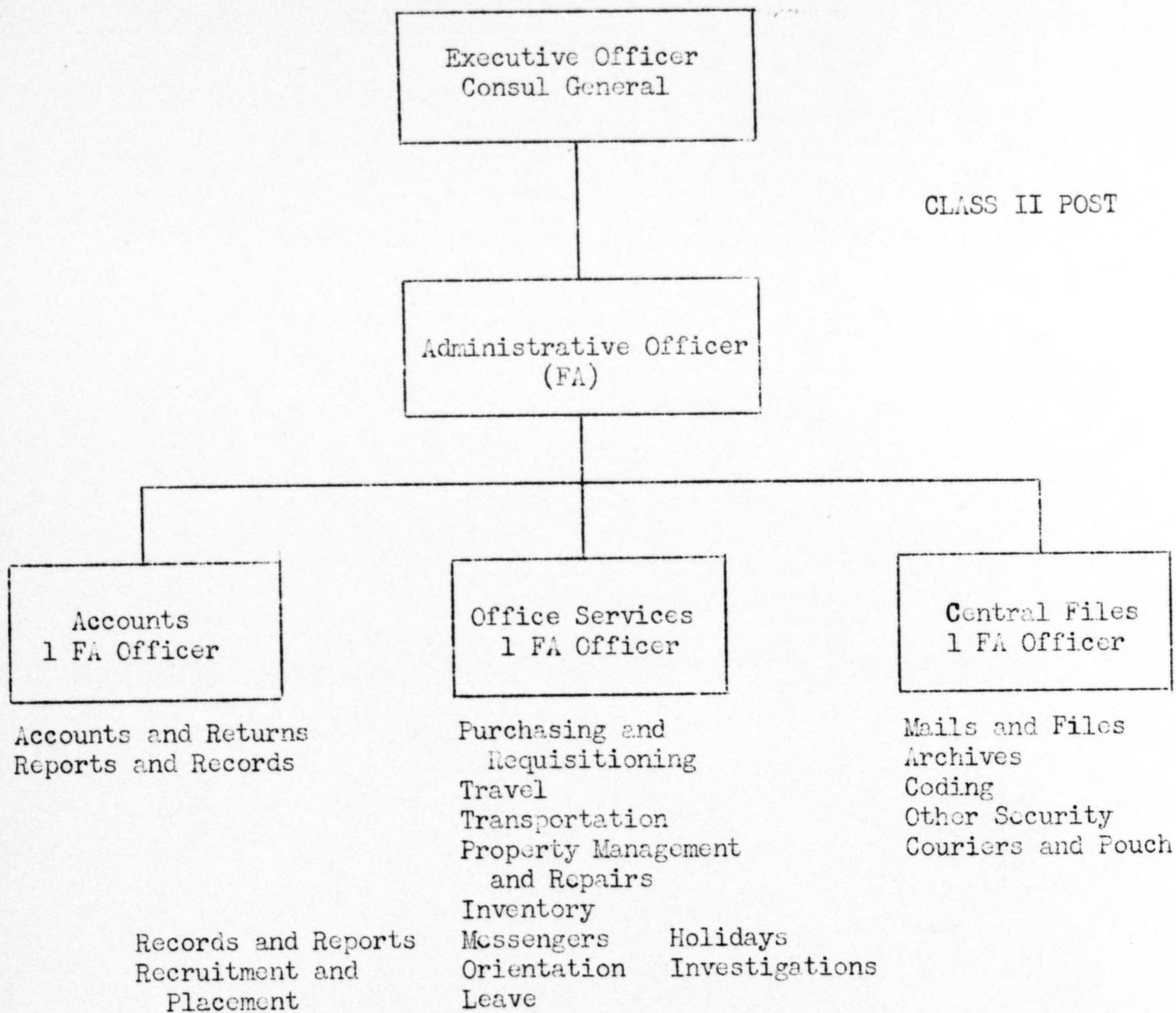
Berlin
Rio de Janeiro
Madrid



Administrative Organization for such Posts as:

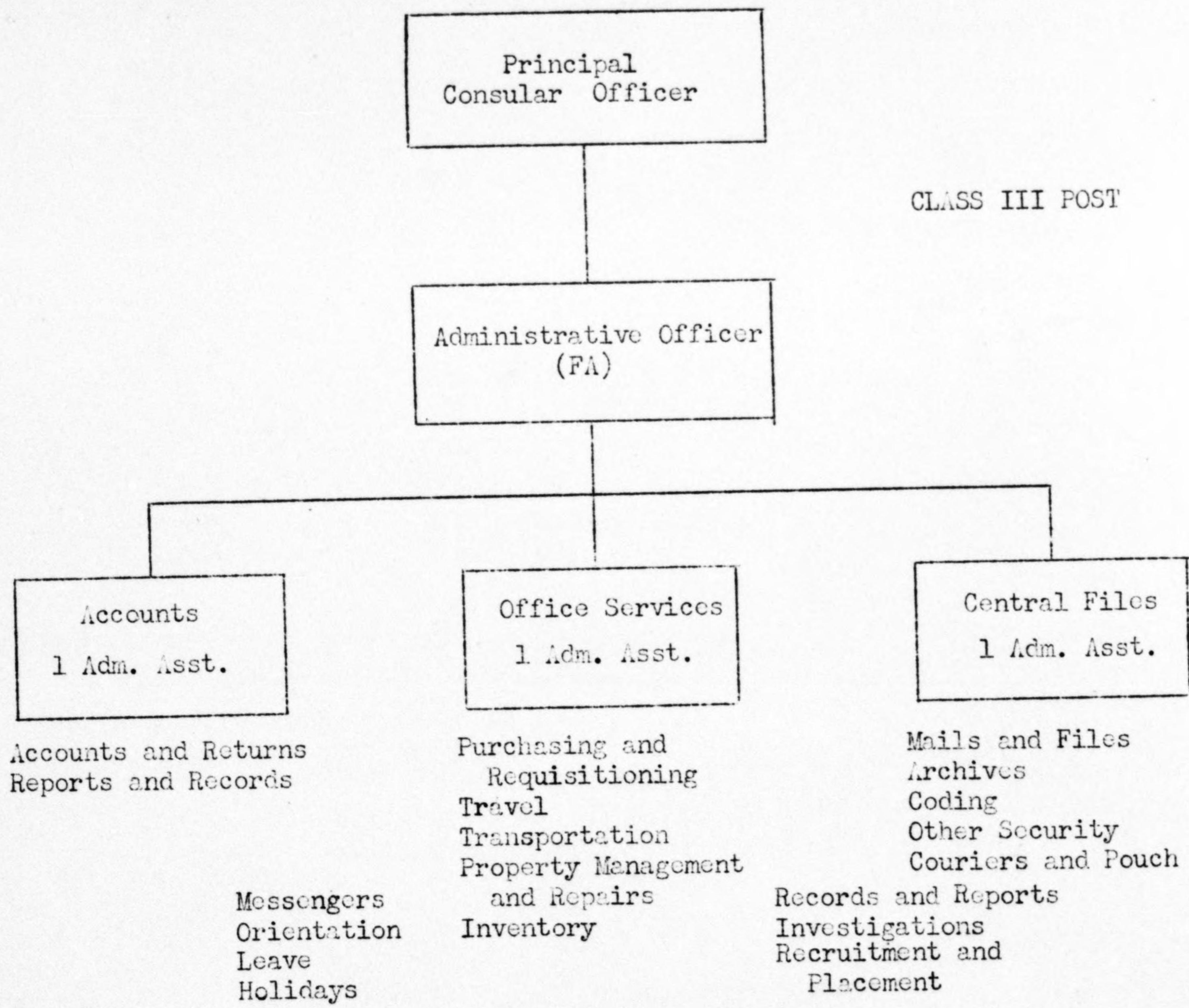
London
Paris
Mexico

Berlin
Rio de Janeiro
Madrid



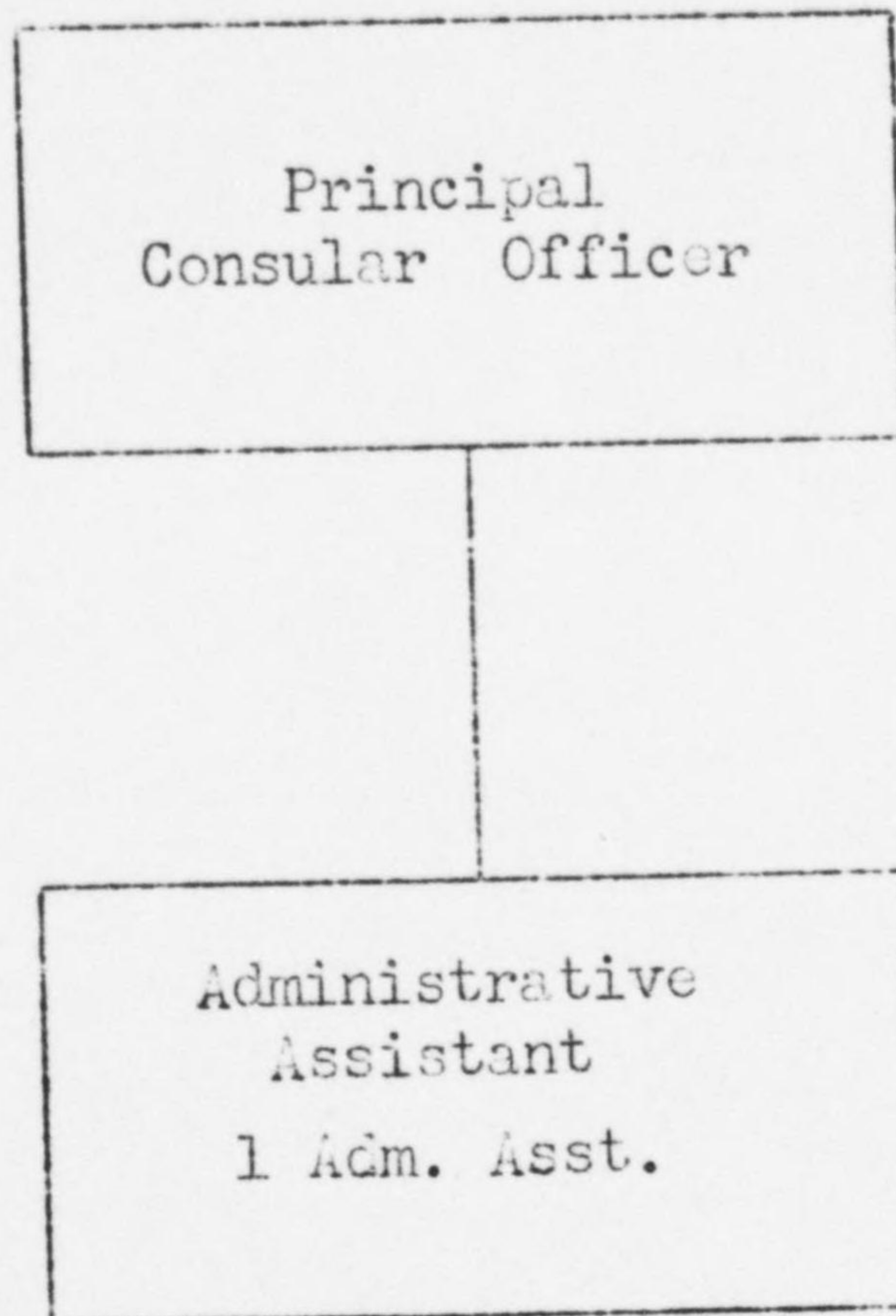
Administrative Organization for such posts as:

- | | |
|--------------|-----------|
| Buenos Aires | Habana |
| Santiago | Lima |
| Montevideo | Caracas |
| Athens | Budapest |
| Lisbon | Stockholm |



Administrative Organization for such Posts as:

- | | |
|-----------------|-----------|
| La Paz | Sao Paulo |
| Bogota | San Jose |
| Ciudad Trujillo | Quito |
| Guatemala | Managua |
| Panama | Sydney |
| Ottawa | Toronto |
| Calcutta | Dublin |



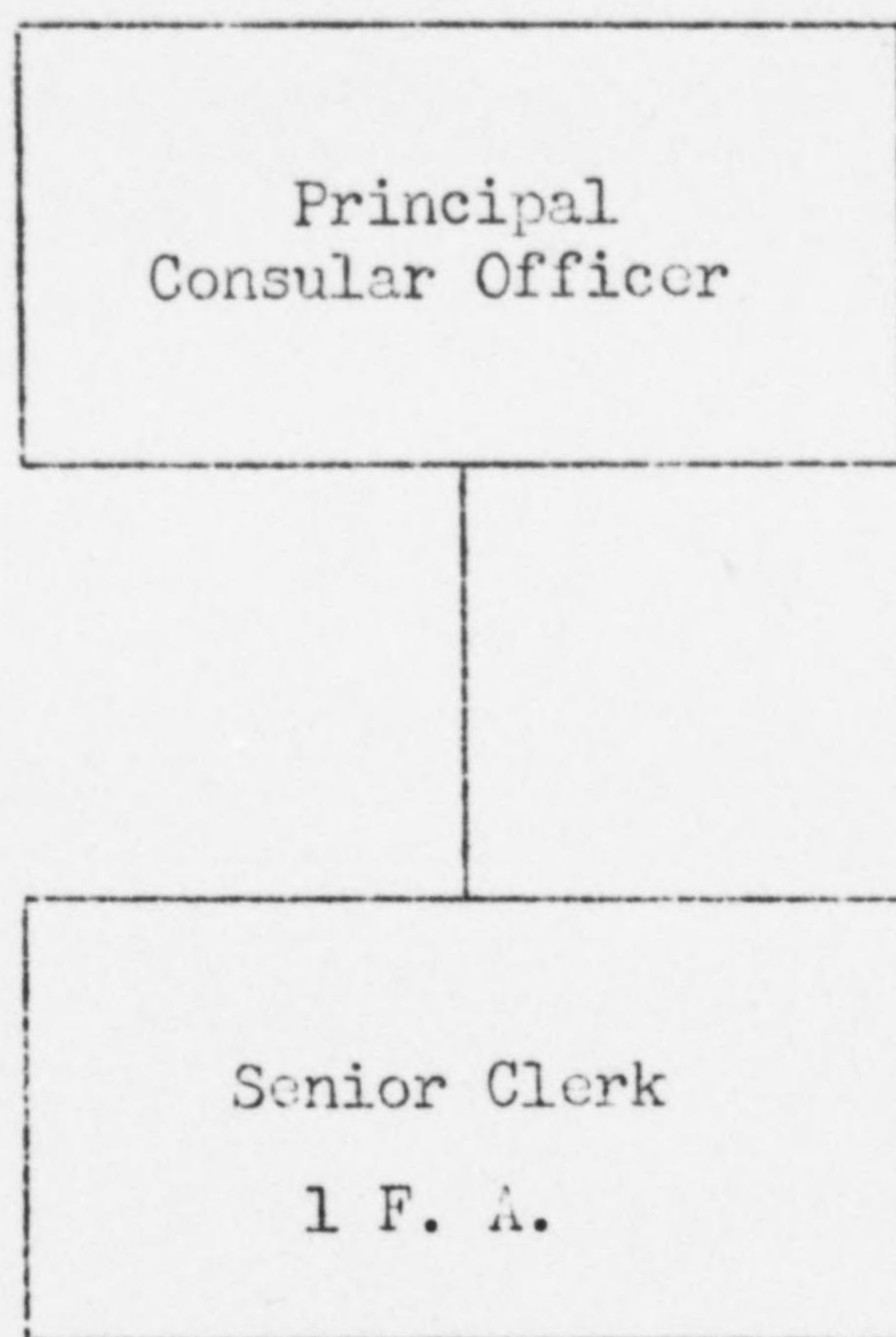
CLASS IV POST

All administrative functions to be performed by an administrative assistant under the direct supervision of the ranking Consular Officer.

Administrative Organization for such Posts As:

Porto Alegre
Valparaiso
Ciudad Juarez
Melbourne

Wellington
Vancouver
New Delhi



CLASS V POST

All administrative functions to be performed by a senior clerk under the direct supervision of the ranking Consular Officer.

Administrative Organization for such Posts as:

Bahia
Antofagasta
Bucaramanga
Guadalajara

Adelaide
Winnipeg
Edinburgh
Leopoldville

ESTIMATE OF ADMINISTRATIVE OFFICER AND ADMINISTRATIVE CLERK PE
FOR FISCAL YEAR 1947

	' Off. ' Total ' Off. ' Total ' Adm. Off. ' Man Yrs. ' Post ' Adm. Off. ' Adm.	' Personnel ' Personnel ' Adm. Fun. ' Rating ' Fiscal ' Fi	' 10/1/39 ' 10/1/39 ' 4/1/45 ' 4/1/45 ' 4/1/45 ' 4/1/45 ' 1947 ' 19					
<u>ARGENTINA</u>								4
Buenos Aires	18	59	26	102	2	3.0	2	4
Bahia Blanca							5	
Mendoza							5	
Salta							5	
Rosario							5	
Cordoba							5	
<u>BOLIVIA</u>								1
La Paz	5	13	12	54	1	1.50	3	1
Cochamba			1	4		.15	5	
<u>BRAZIL</u>								8
Rio de Janeiro	13	47	37	185	3	3.40	1	7
Bahia	2	6	3	13		.50	5	
Bello Horizonte			1	6		.20	5	
Curitiba			1	9		.10	5	
Florianopolis			' Closed ' 3/31/45					
Fortaleza			1	6		.10	5	
Natal			1	5		.30	5	
Manaos			1	5		.20	5	
Para	1	5	3	19		.50	4	
Pernambuco	2	7	4	11		.75	4	
Porto Alegre	2	5	4	15	1	1.40	4	
Santos	1	5	1	8		.75	5	
Sao Paulo	5	15	9	70		.50	3	1
Victoria	1	2	1	3		.20	5	

ESTIMATE OF ADMINISTRATIVE OFFICER AND ADMINISTRATIVE CLERK PERSONNEL
FOR FISCAL YEAR 1947

Total Personnel	Off. Personnel	Total Personnel	Adm. Off. Personnel	Man Yrs. Adm. Fun.	Post Rating	Adm. Off. Fiscal	Adm. Asst. Fiscal	Sr. Clk. Fiscal	Clks. Fiscal	TOTAL	
										Off. 1947	Clks. 1947
1/39	4/1/45	4/1/45	4/1/45	4/1/45		1	3	2	3	4	5
16	10	53	1	1.5	3	1	3		3	4	3
2	1	3		.45	5			1			1
		2		.4	5			1			1
						4		5	14	4	19
59	31	138	4	4.5	2	4			14	4	14
5	1	5		.1	5			1			1
	1	4		.3	5			1			1
3	1	5		.4	5			1			1
3											1
3	1	2		.8	5			1			1
6	2	7		.5	5			1			1
						1	3		6	4	6
19	7	50	2	1.5	3	1	3		6	4	6
						1	4		11	5	11
10	12	50	1	1.4	3	1	3		7	4	7
9	4	18		.6	4		1		4	1	4
						1	3		2	4	2
13	6	31	1	.4	3	1	3		2	4	2
						1	3		3	4	3
20	11	37	1	1.5	3	1	3		3	4	3

ESTIMATE OF ADMINISTRATIVE OFFICER AND ADMINISTRATIVE CLERK PERSONNEL
FOR FISCAL YEAR 1947

	Off. Personnel	Total Personnel	Off. Personnel	Total Personnel	Adm. Off.	Man Yrs. Adm. Fun.	Post Rating	Adm. Off. Fiscal	Adm. Fis
	10/1/39	10/1/39	4/1/45	4/1/45	4/1/45	4/1/45		1947	1947
<u>HAITI</u>								1	3
Port-au-Prince	4	17	7	41	1	.9	3	1	3
<u>HONDURAS</u>								1	3
Tegucigalpa	1	14	4	26		.3	3	1	3
La Ceiba	2	5	2	5		.2	5		
Puerto Cortes	1	2	2	4		.8	5		
<u>MEXICO</u>								7	5
Mexico	22	72	49	237	3	3.9	1	7	
Acapulco			1	3		.4	5		
Agua Prieta	2	4	2	6		.45	5		
Chihuahua	2	4	2	10		.5	5		
Ciudad Juarez	4	9	6	22		1.2	4		1
Durango	1	3	1	4		.4	5		
Ensenada	3	6					5		
Guadalajara	2	5	2	11		.4	5		
Guaymas	1	3	2	5		.9	5		
Manzanillo			1	4		.2	5		
Matamoros	2	4	3	13		.7	4		1
Mazatlan	2	5	3	8		.9	4		1
Merida	1	3	1	7		.4	5		
Mexicali	2	4	3	7		.4	5		
Monterrey	4	9	5	20		.8	4		1
Nogales	2	5	3	14		.2	5		
Nuevo Laredo	3	5	4	12	1	1.05	4		1
Piedras Negras	2	4	2	7		.4	5		
Reynosa			1	7		.2	5		

ESTIMATE OF ADMINISTRATIVE OFFICER AND ADMINISTRATIVE CLERK PERSONNEL
FOR FISCAL YEAR 1947

Total Personnel	Off. Personnel	Total Personnel	Adm. Off.	Man Yrs.	Post Rating	Adm. Off.	Adm. Asst.	Sr. Clk.	Clks.	TOTAL	
										Off.	Clks.
1/39	4/1/45	4/1/45	4/1/45	4/1/45		1947	1947	1947	1947	1947	1947
						1	3		1	4	1
17	7	41	1	.9	3	1	3		1	4	1
						1	3	2	1	4	3
14	4	26		.3	3	1	3		1	4	1
5	2	5		.2	5			1			1
2	2	4		.8	5			1			1
						7	5	20	59	121	79
72	49	237	3	3.9	1	7			42	7	42
	1	3		.4	5			1			1
4	2	6		.45	5			1			1
4	2	10		.5	5			1			1
9	6	22		1.2	4		1		4	1	4
3	1	4		.4	5			1			1
6					5			1			1
5	2	11		.4	5			1	1		2
3	2	5		.9	5			1			1
	1	4		.2	5			1			1
4	3	13		.7	4		1		1	1	1
5	3	8		.9	4		1		1	1	1
3	1	7		.4	5			1	1		2
4	3	7		.4	5			1			1
9	5	20		.8	4		1		2	1	2
5	3	14		.2	5			1	1		2
5	4	12	1	1.05	4		1		2	1	2
4	2	7		.4	5			1			1
	1	7		.2	5			1			1

ESTIMATE OF ADMINISTRATIVE OFFICER AND ADMINISTRATIVE CLERK PERSONNEL
FOR FISCAL YEAR 1947

	Off. Personnel	Total Personnel	Off. Personnel	Total Personnel	Adm. Off.	Man Yrs.	Post Rating	Adm. Off. Fiscal	Adm. A Fiscal
	10/1/39	10/1/39	4/1/45	4/1/45	4/1/45	4/1/45		1947	1947
<u>MEXICO (Cont'd)</u>									
San Luis Potosi	2	6	1	5		.1	5		
Saltillo		2					5		
Tampico	2	6	2	10		.6	5		
Tapachula			1	5		.4	5		
Tijuana			4	11		.5	5		
Torreon	2	5	2	6		.3	5		
Veracruz	2	8	2	9		.8	5		
<u>NICARAGUA</u>									
Managua	3	16	9	52	1	1.1	3	1	3
<u>PANAMA</u>									
Panama	7	21	7	64	1	.5	3	1	3
Colon	2	6	2	6		.5	5		
<u>PARAGUAY</u>									
Asuncion	2	11	7	37		1.	3	1	3
<u>PERU</u>									
Callao-Lima	6	13							
Lima	3	14	22	95	1	2.9	2	4	
Arequipa			1	6		.2	5		
Iquitos				2			5		

ESTIMATE OF ADMINISTRATIVE OFFICER AND ADMINISTRATIVE CLERK PERSONNEL
FOR FISCAL YEAR 1947

Total Personnel	Off. 4/1/39	Off. 4/1/45	Total Personnel 4/1/45	Adm. Off. 4/1/45	Man Yrs. 4/1/45	Post Rating	Adm. Off. Fiscal 1947	Adm. Asst. Fiscal 1947	Sr. Clks. Fiscal 1947	Clks. Fiscal 1947	TOTAL Off. 1947	TOTAL Clks. 1947
6	1		5		.1	5			1			1
2						5			1			1
6	2		10		.6	5			1	1		2
	1		5		.4	5			1	1		2
	4		11		.5	5			1	1		2
5	2		6		.3	5			1			1
8	2		9		.8	5			1	1		2
							1	3		5	4	5
16	9		52	1	1.1	3	1	3		5	4	5
							1	3	1	8	4	9
21	7		64	1	.5	3	1	3		8	4	8
6	2		6		.5	5			1			1
							1	3		2	4	2
11	7		37		1.	3	1	3		2	4	2
							4		2	13	4	15
13												
14	22		95	1	2.9	2	4			13	4	13
	1		6		.2	5			1			1
			2			5			1			1

ESTIMATE OF ADMINISTRATIVE OFFICER AND ADMINISTRATIVE CLERK PERSONNEL
FOR FISCAL YEAR 1947

	' Off. '10/1/39	' Total '10/1/39 ' Personnel	' Off. '4/1/45	' Total '4/1/45 ' Personnel	' Adm. Off. '4/1/45	' Man Yrs. '4/1/45 ' Adm. Fun.	' Post Rating	' Adm. Off. '1947	' Adm. Ass. '1947
<u>URUGUAY</u>								4	
Montevideo	5	17	21	83	1	1.6	2	4	
<u>VENEZUELA</u>								4	
Caracas	7	23	18	76		2.8	2	4	
La Guaira	1	3	1	5		.6	5		
Maracaibo	2	6	2	9		.5	5		
Puerto de la Cruz			1	3		.3	5		
TOTAL AMERICAN REPUBLICS	231	742	474	2133	30	87.75		51	51

ESTIMATE OF ADMINISTRATIVE OFFICER AND ADMINISTRATIVE CLERK PERSONNEL
FOR FISCAL YEAR 1947

Personnel	Off.	Total	Adm. Off.	Man Yrs.	Post	Adm. Off.	Adm. Asst.	Sr. Clk.	Clks.	TOTAL	
	'4/1/45	Personnel	'4/1/45	'Adm. Fun. Rating	' Rating	' Fiscal	' Fiscal	' Fiscal	' Fiscal	Off.	Clks.
						4			8	4	8
21	83	1	1.6	2	4				8	4	8
					4		3		20	4	23
18	76		2.8	2	4				18	4	18
1	5		.6	5			1		1		2
2	9		.5	5			1		1		2
1	3		.3	5			1				1
474	2133	30	87.75		51	51	58	253	102	311	

ESTIMATE OF ADMINISTRATIVE OFFICER AND ADMINISTRATIVE CLERK PERSONNEL
FOR FISCAL YEAR 1947

	Off.	Total	Off.	Total	Adm. Off.	Man Yrs.	Post	Adm. Off.	Adm. Ass
	'Personnel'	'Personnel'	'Personnel'	'Personnel'	'Adm. Off.'	'Man Yrs.'	'Rating'	'Fiscal'	'Fiscal'
	'10/1/39'	'10/1/39'	'4/1/45'	'4/1/45'	'4/1/45'	'4/1/45'		'1947'	'1947'
<u>BRITISH COMMON-WEALTH, EMPIRE AND POSSESSIONS</u>									
<u>AUSTRALIA</u>								1	6
Canberra			3	14	1	1.	4		1
Adelaide	1	3	1	4		.1	5		
Brisbane	1	4	3	11		.8	4		1
Melbourne	4	11	4	13		.9	4		1
Perth	1	3	2	5		.4	5		
Sydney	7	23	9	33	4	3.8	3	1	3
<u>CANADA</u>								3	14
Ottawa	11	43	12	48	1	2.75	3	1	3
Calgary	1	3	1	3		.4	5		
Edmonton	1	3	2	6		.5	5		
Ft. William & Port Arthur	1	4	1	4		.1	5		
Fredericton	1	2	1	4		.3	5		
Halifax	4	9	4	10		.65	4		1
Hamilton	2	5	2	9		.4	5		
London	1	3							
Montreal	10	22	13	37	2	2.9	3	1	3
Niagra Falls	4	8	2	11		.1	4		1
Quebec	2	6	2	5		.4	5		
Regina	2	5	2	6		.9	5		
St. John	2	6	2	8		.9	5		
St. Stephen	1	3	1	4		.5	5		
Sarnia			1	6		.2	5		
Toronto	8	21	8	28	1	1.9	3	1	3

ESTIMATE OF ADMINISTRATIVE OFFICER AND ADMINISTRATIVE CLERK PERSONNEL
FOR FISCAL YEAR 1947

Personnel	Off. '49	Off. '45	Total Personnel	Adm. Off. '45	Man Yrs. '45	Post Rating	Adm. Off. Fiscal 1947	Adm. Asst. Fiscal 1947	Sr. Clk. Fiscal 1947	Clks. Fiscal 1947	TOTAL Off. 1947	TOTAL Clks. 1947
							1	6	2	12	7	14
	3		14	1	1.	4		1		2	1	2
	1		4		.1	5			1			1
	3		11		.8	4		1		3	1	3
	4		13		.9	4		1		2	1	2
	2		5		.4	5			1	1		2
	9		33	4	3.8	3	1	3		4	4	4
							3	14	11	20	17	31
	12		48	1	2.75	3	1	3		2	4	2
	1		3		.4	5			1			1
	2		6		.5	5			1			1
	1		4		.1	5			1			1
	1		4		.3	5			1			1
	4		10		.65	4		1		1	1	1
	2		9		.4	5			1	1		2
	13		37	2	2.9	3	1	3		2	4	2
	2		11		.1	4		1		2	1	2
	2		5		.4	5			1			1
	2		6		.9	5			1	1		2
	2		8		.9	5			1	1		2
	1		4		.5	5			1			1
	1		6		.2	5			1	1		2
	8		28	1	1.9	3	1	3		1	4	1

ESTIMATE OF ADMINISTRATIVE OFFICER AND ADMINISTRATIVE CLERK PERSONNEL
FOR FISCAL YEAR 1947

	'Off. '10/1/39'	'Total Personnel' 10/1/39	'Off. '4/1/45	'Total Personnel' 4/1/45	'Adm. Off. '4/1/45	'Man Yrs. '4/1/45	'Post Rating' 4/1/45	'Adm. Off. Fiscal' 1947	'Adm. Fiscal' 1947
<u>CANADA (Cont'd)</u>									
Vancouver	7	14	6	18		1.1	4		
Victoria	1	3	2	5		.3	5		
Windsor	4	12	4	15		.2	4		
Winnipeg	4	10	2	13		.5	4		
Yarmouth	2	5							
<u>GREAT BRITAIN & NORTHERN IRELAND</u>									
London	30	158	48	276	4	5.5	1	7	
Belfast	3	11	3	13		.8	4		
Birmingham	2	7	2	7		.35	5		
Bradford	2	7	1	6		.3	5		
Bristol	1	3	2	4		.2	5		
Cardoff	1	4	1	4		.4	5		
Edinburgh	2	5	2	5		.5	5		
Glasgow	4	16	2	13		.6	4		
Hull	1	3	2	5		.5	5		
Liverpool	4	12	3	14		.6	4		
Manchester	1	7	2	10		.4	5		
Newcastle-on-Tyne	1	4	1	5		.2	5		
Plymouth	2	7	1	5		.4	5		
Southampton	3	8	1	5		.5	5		
Sheffield	2	2							
Dundee	1	2							

ESTIMATE OF ADMINISTRATIVE OFFICER AND ADMINISTRATIVE CLERK PERSONNEL
FOR FISCAL YEAR 1947

	' Off. '10/1/39	' Total Personnel '10/1/39	' Off. '4/1/45	' Total Personnel '4/1/45	' Adm. Off. '4/1/45	' Man Yrs. '4/1/45	' Post Rating '4/1/45	' Adm. Off. '1947	' Adm. Asst. '1947
<u>GREAT BRITAIN & NORTHERN IRELAND</u> (continued)									
<u>INDIA</u>								2	7
New Delhi			6	46		.9	3	1	3
Bombay	8	18	6	37		1.	4		1
Calcutta	7	36	7	43	1	3.	3	1	3
Karachi	2	8	2	15		.5	5		
Madras	2	10	2	11		.3	5		
<u>IRELAND</u>								1	3
Dublin	5	22	5	31		1.3	3	1	3
Cork	2	10	2	10		.7	5		
Foynes			1	5		.4	5		
<u>NEW ZEALAND</u>									1
Wellington	3	9	6	29	1	1.	4		1
Auckland	1	3	2	5		.8	5		
Dunedin		2							
<u>UNION OF SOUTH AFRICA</u>									2
Pretoria	2	7	5	25	2	2.1	4		1
Capetown	2	7	3	10		.45	5		
Durban	2	5	1	6		.3	5		
Johannesburg	6	14	4	15		.7	4		1
Port Elizabeth	1	2	2	4		.55	5		

ESTIMATE OF ADMINISTRATIVE OFFICER AND ADMINISTRATIVE CLERK PERSONNEL
FOR FISCAL YEAR 1947

	Off.	Total	Adm. Off.	Man Yrs.	Post	Adm. Off.	Adm. Asst.	Sr. Clk.	Clks.	TOTAL	
Personnel	Personnel	Personnel		Adm. Fun.	Rating	Fiscal	Fiscal	Fiscal	Fiscal	Off.	Clks.
1/39	4/1/45	4/1/45	4/1/45	4/1/45		1947	1947	1947	1947	1947	1947
						2	7	2	22	9	24
	6	46		.9	3	1	3		5	4	5
18	6	37		1.	4		1		6	1	6
36	7	43	1	3.	3	1	3		7	4	7
8	2	15		.5	5			1	3		4
10	2	11		.3	5			1	1		2
						1	3	2	5	4	7
22	5	31		1.3	3	1	3		4	4	4
10	2	10		.7	5			1	1		2
	1	5		.4	5			1			1
							1	1	6	1	7
9	6	29	1	1.	4		1		6	1	6
3	2	5		.8	5			1			1
2											
							2	3	14	2	17
7	5	25	2	2.1	4		1		8	1	8
7	3	10		.45	5			1	1		2
5	1	6		.3	5			1	1		2
14	4	15		.7	4		1		4	1	4
2	2	4		.55	5			1			1

ESTIMATE OF ADMINISTRATIVE OFFICER AND ADMINISTRATIVE CLERK PERSONNEL
FOR FISCAL YEAR 1947

	Off. Personnel	Total Personnel	Off. Personnel	Total Personnel	Adm. Off. Personnel	Man Yrs. Adm. Personnel	Post Rating	Adm. Off. Fiscal	Adm. Asst. Fiscal
	10/1/39	10/1/39	4/1/45	4/1/45	4/1/45	4/1/45		1947	1947
<u>EUROPE</u>									
Gibraltar	2	6	2	8		.8	5		
Malta	1	5					5		
<u>ASIA</u>									
Aden	2	6	2	8		.7	5		
Colombo, Ceylon	2	9	4	14		.8	5		
Hongkong	5	24					3	1	3
Rangoon, Burma	2	10					4		1
Penang, Sts.	1	8					5		
British Borneo							5		
Singapore, Sts.	6	18					3	1	3
Suva, Fiji Is.			1	4		.4	5		
<u>AFRICA</u>									
Accra, Gold Coast			3	12		.4	5		
Freetown							5		
Lagos, Nigeria	3	10	5	18	1	1.4	4		1
Mombasa, Kenya			2	6		.5	5		
Narrobi, Kenya	2	8	4	15		.4	5		
<u>AMERICAS</u>									
Antigua, Leeward Islands			1	4		.1	5		
Barbados, BWI	2	7	2	7		.7	5		
Belize	1	4	2	6		.7	5		
Georgetown			2	7		.4	5		
Hamilton	2	5	3	11		.3	5		