



# AIRCRAFT ACTION REPORT

RESTRICTED  
(Reclassify when filled out)

REPORT No. 134

## VI. LOSS OR DAMAGE, COMBAT OR OPERATIONAL, OF OWN AIRCRAFT (of those listed in II only).

(a) TYPE OWN A/C	(b) SQUADRON	(c) CAUSE: TYPE ENEMY A/C, TYPE GUN, OR OPERATIONAL CAUSE	(d) WHERE HIT, ANGLE (List armor, self-sealing tanks, equipment hit)	(e) EXTENT OF LOSS OR DAMAGE, (Give Bureau serial number of planes destroyed)
1		NONE		
2				
3				
4				
5				
6				
7				
8				
9				
10				
11				
12				
13				
14				

## VII. PERSONNEL CASUALTIES (in aircraft listed in II only; identify with planes listed in VI by Nos. at left).

(a) NO.	(b) SQUADRON	(c) NAME, RANK OR RATING	(d) CAUSE	(e) CONDITION OR STATUS
		NONE		

## VIII. RANGE, FUEL, AND AMMUNITION DATA FOR PLANES RETURNING

(a) TYPE A/C	(b) MILES OUT	(c) MILES RETURN	(d) AV. HOURS IN AIR	(e) AV. FUEL LOADED	(f) AV. FUEL CONSUMED	(g) TOTAL AMMUNITION EXPENDED				(h) NO. OF PLANES RETURNING
						.30	.50	20MM	MM	
<b>TB-3</b>	<b>68</b>	<b>68</b>	<b>2.75</b>	<b>330</b>	<b>180</b>	<b>775</b>	<b>2260</b>			<b>12</b>
<b>TB-2</b>	<b>68</b>	<b>68</b>	<b>2.75</b>	<b>230</b>			<b>3000</b>			<b>4</b>

## IX. ENEMY ANTI-AIRCRAFT ENCOUNTERED (Check one block on each line).

CALIBER	NONE	MEAGER	MODERATE	INTENSE
HEAVY — Time-fused shells, 75mm and over		<input checked="" type="checkbox"/>		
MEDIUM — Impact-fused shells, 20mm-50mm				<input checked="" type="checkbox"/>
LIGHT — Machine gun bullets, 6.5mm-13.2mm				<input checked="" type="checkbox"/>

## X. COMPARATIVE PERFORMANCE, OWN AND ENEMY AIRCRAFT (use check list at left).

- SPEED, CLIMB,  
at various altitudes

URNS

DIVES

CEILINGS

RANGE

PROTECTION

ARMAMENT

NONE

# CONFIDENTIAL

# AIRCRAFT ACTION REPORT

RESTRICTED  
(Reclassify when filled out)

(OMIT THIS SHEET IF NO ATTACK WAS MADE)

REPORT No. 134

## XI. ATTACK ON ENEMY SHIPS OR GROUND OBJECTIVES (By Own Aircraft Listed in II Only).

- (a) Target(s) and Location(s) Wagram Airfield, Humber River (FOR SHIPS INCLUDE ALL IN AREA UNDER ATTACK) (b) Time Over Target (s) 0815-1000(1) (Zone)
- (c) Clouds Over Target 4000 .2 Cumulus (BASE IN FEET, TYPE AND TENTHS OF COVER)
- (d) Visibility of Target clear (CLEAR, HAZY, PARTIALLY OBSCURED BY CLOUDS, ETC.) (e) Visibility 15 (MILES)
- (f) Bombing Tactics: Type glide (LEVEL, GLIDE OR DIVE) Bomb Sight Used 12:0 (TYPE)
- Bombs Dropped per Run 3 (NUMBER) Spacing 50-75-0 (FEET) Altitude of Bomb Release 5 (FEET)
- (g) Number of Enemy Aircraft Hit on Ground: Destroyed \_\_\_\_\_ Probably Destroyed \_\_\_\_\_ Damaged \_\_\_\_\_

(h) AIMING POINT	(i) DIMENSIONS OR TONNAGE	(j) NO A/C ATTACKING	(l) BOMBS AND AMMUNITION EXPENDED EACH AIMING POINT	(m) NO HITS On Aiming Point	(n) DAMAGE (None, slight, serious, destroyed or sunk)
		(k) SQUADRON			
1	Runways, taxiways, revetments, AA positions and planes on ground	12 TBM, 4 FM	30-500; 57 rfts;	see (g)	Runways cratered by 25 bomb hits. One heavy AA position destroyed. One med. AA position damaged. 3 A/C slightly damaged. Several revetments damaged.
2		VF-66	775 rds .50 cal;		
3			5200 rds .50 cal		
4					
5					
6					
7					
8					

(o) RESULTS: (For all hits claimed on ship targets and for land targets of special interest, draw diagram, top or side view or both, as appropriate, showing type and location of hits. For all targets give location and effect of hits, and identify by numbers above. Use additional sheets if necessary).

As a result of a heavy bombing, strafing and rocket attack three runways of the field were well cratered with 25 direct hits by 500# bombs; 3 planes were believed damaged by strafing and 3 rockets which hit or hit close by; 2-500# and 30 rockets damaged several revetments, 2-500# bombs and 3 rockets hit a heavy AA position, destroyed it; two rockets damaged a medium AA position.

CONFIDENTIAL

(p) Were Photographs Taken? YES Photographs of Damage, When Taken, Should Be Attached By Staple.

# AIRCRAFT ACTION REPORT

RESTRICTED  
(Reclassify when  
filled out)

REPORT No. 104

## XII. TACTICAL AND OPERATIONAL DATA. (Narrative and comment. Describe action fully and comment freely, following applicable items in check list at left. Use additional sheets if necessary.)

### ENGAGEMENT WITH ENEMY

#### OWN AIRCRAFT

Disposition  
Altitudes  
Speeds  
Approach Tactics  
Use of Cover, Deception  
Angles of Attack and  
Their Effectiveness  
Distance of Opening Fire  
Defense Tactics and  
Their Effectiveness

#### ENEMY AIRCRAFT

Method of Locating, Distance  
Disposition  
Altitudes  
Speeds  
Approach Tactics  
Use of Cover, Deception  
Angles of Attack  
Distance of Opening Fire  
Defensive Tactics

#### COMMENTS AND RECOMMENDATIONS

Own Weaknesses  
Enemy Weaknesses  
Offensive Tactics, Own  
" " , Enemy  
Defensive Tactics, Own  
" " , Enemy  
Flexible Gunnery, Own  
Escort Tactics  
Fighter Direction  
Use of Radar  
Night Fighting  
Recognition, Aircraft

### ATTACK

#### OWN TACTICS

Method of Locating Target  
Approach to Target  
Altitudes, Speeds  
Approach  
Dive  
Pull-Out  
Dive Angle  
Strafing  
Retirement  
Defensive Tactics  
Use of Jamming

#### DEFENSE, ENEMY

Evasive Tactics, Ships  
Concealment  
Searchlights  
Night Fighter Tactics  
Use of Jamming

#### COMMENTS AND RECOMMENDATIONS

Bombing Tactics  
Torpedo Tactics  
Effectiveness of  
Bombs, Torpedoes  
Selection of Targets  
Fuzing  
Strafing Tactics  
Defensive Tactics  
Use of Radar  
Reconnaissance  
Photography  
Briefing

### OPERATIONAL

Navigation  
Homing  
Rendezvous  
Recognition, Ships  
Communications  
Flight Operations  
Search and Tracking  
Base Operations  
Maintenance

On 15 April 1945 9 TBM's of VC-33 and 4 PB-2's of VC-33 heavily attacked Hiruru airfield in Miyako Shima. The TBM pilots were: Lt's. H. L. KEMPf, and J. D. MITCHELL, Lt's(jg) E. J. SCHLUETER, F. C. HERFURTH, G. H. PETERSON, and Ensigns H. B. WOOD, R. P. PROWSE, T. F. HEDGINS, P. YERLAVICH, G. B. HANOVER, R. H. FAIRHURST and J. A. HITT. The PB-2 pilots were: Lt. J. C. SANDFORD, Lt's(jg) W. J. ARDSTROM, C. E. RICHIE and Ensign C. S. ADAMS. The PB-2's had taken off the carrier at 0730(I), proceeded to the target and flew TOAP until the TBMs arrived.

The TBMs divided into three sections of four each; each section had a specific runway for its target. Lt. Kempf, the flight leader, led his section from the west, hitting the east-west runway, Lt. Mitchell's section hit the north-south runway; Lt(jg) Schlueter's section hit the northeast-southwest runway, attacking from the northeast. All attacks were coordinated so that only a slight interval existed between the attacks of each section. Lt. Sanford led the fighters in from east north west, ahead of the TBM-3. All bombs were dropped on these first runs. All the planes then rendezvoused to the east of the island and began a section run, still in 3 sections of four, coming in abreast firing rockets and strafing. Against Lt. Sanford preceded the TBM attack. The bombing runs were begun at 1000 feet altitude; glides were made at 40 degrees, bombs released at 3500 ft. Rocket runs were begun at 3000, pulling out at 2500 feet.

The damage done was considerable. 25-500# GP bombs hit the runways, leaving them well cratered. Three planes on the ground, along the runways, either operational or only slightly damaged, were hit with strafing and rockets. One heavy AA position, west of the northern tip of the north-south runway, spotted and damaged on 14 April, was hit by three bombs of Lt(jg) Peterson and three of Lt(jg) Herfurth's rockets. Ensign Fairhurst fired two rockets into a medium AA position. The combined rocket and strafing attacks plus 2-500# bombs damaged several revetments.

A great deal of AA fire was encountered, as on previous strikes. The heavy calibre was meagre and inaccurate; the medium was intense and fairly accurate; the light fire was intense and inaccurate.

The attack began at 0815 and ended at 1000(I), the planes all returning to their base. Special strike landed at 1100(I), TOAP, remaining on station after the strike group had left, landed at 1130(I)

CONFIDENTIAL

# AIRCRAFT ACTION REPORT

RESTRICTED  
(Reclassify when  
filled out)

REPORT No. 134

**XIII. MATERIAL DATA.** (Comment freely on performance or suitability, following check list at left.  
Use additional sheets if necessary).

**ARMAMENT**

- Guns, Gunsights
- Turrets
- Ammunition
- Bombs, Torpedoes
- Bomb Sights
- Bomb Releases

**COMMUNICATIONS**

- Radio, Radar
- Homing Devices
- Visual Signals
- Codes, Ciphers

**RECOGNITION**

- IFF
- Signals
- Battle Lights
- Procedures

**PROTECTION**

- Armor; Points and Angles  
of Fire Needing Further  
Protection
- Leak Proofing

**EMERGENCY EQUIPMENT**

- Parachutes
- Life Belts, Life Rafts
- Safety Belts
- Emergency Kits
- Rations, First Aid

**NAVIGATIONAL EQUIPMENT**

- Compasses
- Driftsights
- Octants
- Automatic Pilots
- Charts
- Field Lighting

**INSTRUMENTS**

- Flight
- Power Plant

**OXYGEN SYSTEM**

**CAMOUFLAGE AND  
DECEPTION DEVICES**

**STRUCTURE**

- Airframe
- Control Surfaces
- Control System
- Dive Flaps
- Landing Gear
- Heating System
- Flight Characteristics  
At Various Loadings

**POWER PLANT**

- Engines
- Engine Accessories
- Propellers
- Lubricating System
- Starters
- Exhaust Dampers

**HYDRAULIC SYSTEM**

**ELECTRICAL SYSTEM**

- Auxiliary Plant,
- Lights

**FUEL SYSTEM**

**FLIGHT CLOTHING**

**MAINTENANCE**

**BASE FACILITIES**

- Plane Servicing Equipment
- Personnel Facilities

**Three TBMs had difficulty in releasing their bombs. A total of  
5 bombs were jettisoned in the sea.**

REPORT PREPARED BY:

APPROVED BY:

## CONFIDENTIAL

H. D. SCHMIDT, Lt. USNR, AGO

SIGNATURE

RANK AND DUTY

H. L. KROPP, Lt. USNR, Commanding

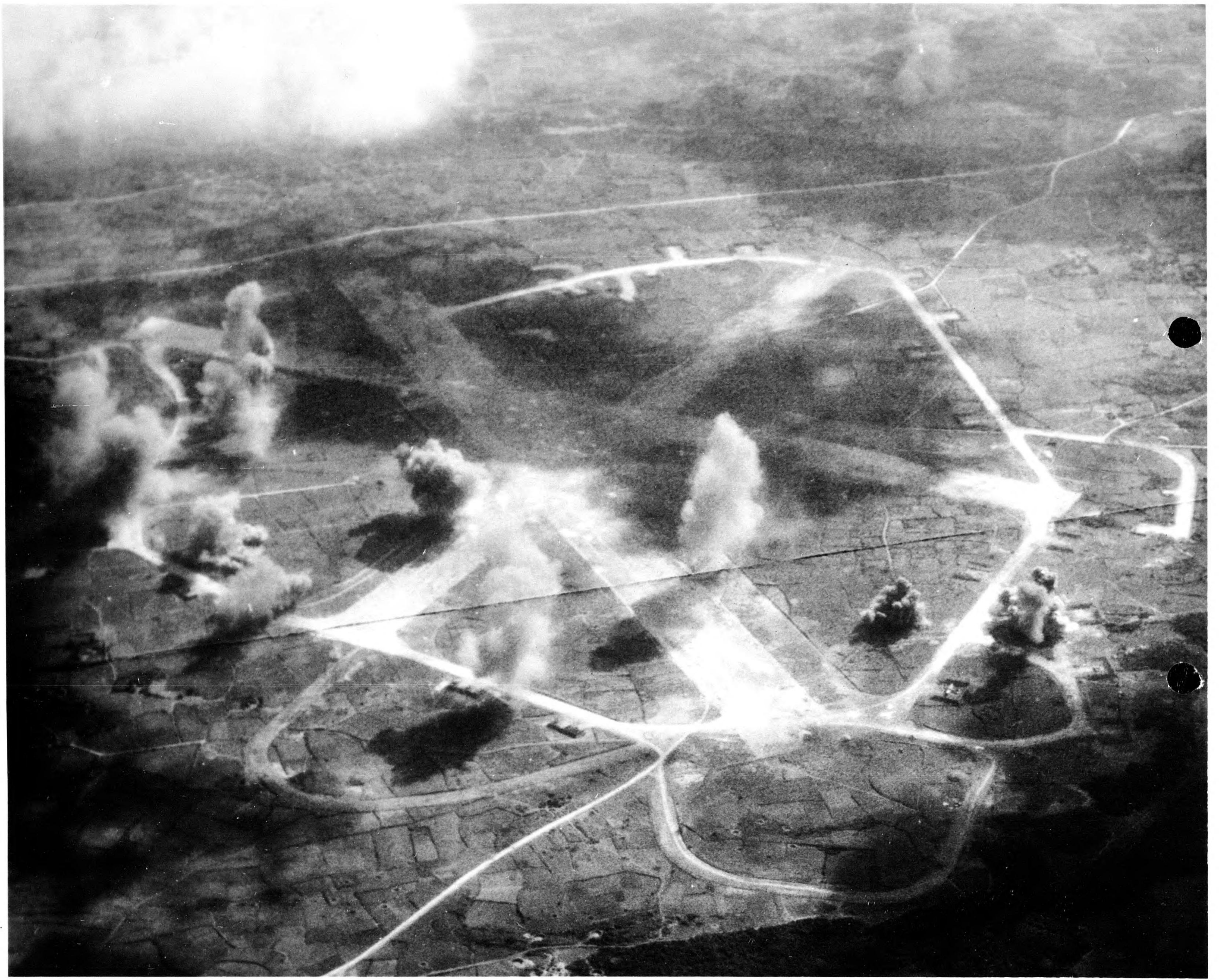
SIGNATURE

RANK AND DUTY

26 April 1945

DATE





CONFIDENTIAL

NO. QVE82  
427 DATE 4-15-45  
UNIT VC-88

MADE FOR ACTI ACA-1 #134  
SUBJECT STRIKE ON HIRARA  
AIRFIELD, MIYAKO JIMA.